

Data Path : Z:\svoasrv\HPCHEM1\BNA_N\Data\BN061122\
 Data File : BN020100.D
 Acq On : 10 Jun 2022 14:54
 Operator : CG/JU
 Sample : N3250-05MSD
 Misc :
 ALS Vial : 8 Sample Multiplier: 1

Instrument :
 BNA_N
 ClientSampleId :
 EXYW2MSDMSD

Manual Integrations
 APPROVED

Reviewed By :Jagrut Upadhyay 06/13/2022
 Supervised By :mohammad ahmed 06/14/2022

Quant Time: Jun 10 22:45:45 2022
 Quant Method : Z:\svoasrv\HPCHEM1\BNA_N\Methods\SFAM-EPA-BN060622.M
 Quant Title : SVOA CALIBRATION
 QLast Update : Mon Jun 06 15:14:59 2022
 Response via : Initial Calibration

Compound	R.T.	QIon	Response	Conc	Units	Dev(Min)
Internal Standards						
1) 1,4-Dichlorobenzene-d4	7.822	152	151632	20.000	ng/ul	0.00
20) Naphthalene-d8	10.610	136	712321	20.000	ng/ul	0.00
38) Acenaphthene-d10	14.445	164	450944	20.000	ng/ul	0.00
64) Phenanthrene-d10	17.186	188	942806	20.000	ng/ul	0.00
79) Chrysene-d12	21.380	240	789658	20.000	ng/ul	# 0.00
88) Perylene-d12	23.710	264	739596	20.000	ng/ul	0.00
System Monitoring Compounds						
3) 1,4-Dioxane-d8	3.281	96	16617	4.746	ng/uL	0.00
4) Pyridine-d5	3.687	84	92302	9.646	ng/ul	0.00
7) Phenol-d5	6.987	99	87760	6.994	ng/ul	0.00
9) Bis-(2-Chloroethyl)eth...	7.152	67	244657	31.209	ng/ul	0.00
11) 2-Chlorophenol-d4	7.352	132	259321	25.437	ng/ul	0.00
15) 4-Methylphenol-d8	8.528	113	185323	17.072	ng/ul	0.00
21) Nitrobenzene-d5	8.969	128	177701	32.791	ng/ul	0.00
24) 2-Nitrophenol-d4	9.693	143	191468	33.292	ng/ul	0.00
28) 2,4-Dichlorophenol-d3	10.234	165	308432	30.720	ng/ul	0.00
31) 4-Chloroaniline-d4	10.740	131	461305	28.372	ng/ul	0.00
46) Dimethylphthalate-d6	13.863	166	1203977	36.694	ng/ul	0.00
49) Acenaphthylene-d8	14.140	160	1341299	35.250	ng/ul	0.00
54) 4-Nitrophenol-d4	14.645	143	51967	7.904	ng/ul	0.00
60) Fluorene-d10	15.439	176	987854	36.383	ng/ul	0.00
65) 4,6-Dinitro-2-methylph...	15.563	200	200077	36.635	ng/ul	0.00
73) Anthracene-d10	17.286	188	1512650	36.763	ng/ul	0.00
81) Pyrene-d10	19.586	212	1672585	39.071	ng/ul	0.00
92) Benzo(a)pyrene-d12	23.563	264	1408956	38.936	ng/ul	0.00
Target Compounds						
2) 1,4-Dioxane	3.317	88	16720	4.524	ng/uL	90
5) Pyridine	3.711	79	100266	9.995	ng/ul	96
6) Benzaldehyde	6.958	77	257218	43.508	ng/ul	90
8) Phenol	7.016	94	99758	7.467	ng/ul	98
10) Bis(2-Chloroethyl)ether	7.246	93	319905	30.592	ng/ul	99
12) 2-Chlorophenol	7.387	128	262787	24.660	ng/ul	98
13) 2-Methylphenol	8.263	108	200985	19.568	ng/ul	99
14) 2,2'-oxybis(1-Chloropr...	8.352	45	495901	30.242	ng/ul	97
16) Acetophenone	8.634	105	532559	32.260	ng/ul	98
17) N-Nitroso-di-n-propyla...	8.628	70	274645	32.567	ng/ul	95
18) 4-Methylphenol	8.587	108	196521	17.335	ng/ul	97
19) Hexachloroethane	8.899	117	123340	28.765	ng/ul	89
22) Nitrobenzene	9.016	77	387779	30.862	ng/ul	93
23) Isophorone	9.540	82	803480	32.386	ng/ul	98
25) 2-Nitrophenol	9.722	139	199959	31.464	ng/ul	99
26) 2,4-Dimethylphenol	9.793	107	325619	24.732	ng/ul	99
27) Bis(2-Chloroethoxy)met...	10.022	93	467081	30.765	ng/ul	97
29) 2,4-Dichlorophenol	10.263	162	316405	30.466	ng/ul	96
30) Naphthalene	10.657	128	1143846	30.984	ng/ul	99
32) 4-Chloroaniline	10.763	127	443007	27.241	ng/ul	99
33) Hexachlorobutadiene	10.957	225	171940	28.836	ng/ul	99
34) Caprolactam	11.528	113	17734m	4.373	ng/ul	
35) 4-Chloro-3-methylphenol	11.893	107	365464	29.802	ng/ul	99
36) 2-Methylnaphthalene	12.269	142	805077	32.257	ng/ul	99

Data Path : Z:\svoasrv\HPCHEM1\BNA_N\Data\BN061122\
 Data File : BN020100.D
 Acq On : 10 Jun 2022 14:54
 Operator : CG/JU
 Sample : N3250-05MSD
 Misc :
 ALS Vial : 8 Sample Multiplier: 1

Instrument :
 BNA_N
ClientSampleId :
 EXYW2MSDMSD

Manual Integrations
APPROVED
 Reviewed By :Jagrut Upadhyay 06/13/2022
 Supervised By :mohammad ahmed 06/14/2022

Quant Time: Jun 10 22:45:45 2022
 Quant Method : Z:\svoasrv\HPCHEM1\BNA_N\Methods\SFAM-EPA-BN060622.M
 Quant Title : SVOA CALIBRATION
 QLast Update : Mon Jun 06 15:14:59 2022
 Response via : Initial Calibration

Compound	R.T.	QIon	Response	Conc	Units	Dev(Min)
37) 1-Methylnaphthalene	12.493	142	828730	32.538	ng/ul	96
39) 1,2,4,5-Tetrachloroben...	12.645	216	372418	32.381	ng/ul	99
40) Hexachlorocyclopentadiene	12.628	237	165036	23.589	ng/ul	94
41) 2,4,6-Trichlorophenol	12.881	196	275523	34.743	ng/ul	99
42) 2,4,5-Trichlorophenol	12.951	196	318958	36.316	ng/ul	96
43) 1,1'-Biphenyl	13.281	154	1110773	33.265	ng/ul	99
44) 2-Chloronaphthalene	13.322	162	842171	33.246	ng/ul	94
45) 2-Nitroaniline	13.522	65	304901	38.689	ng/ul	97
47) Dimethylphthalate	13.910	163	1173979	35.542	ng/ul	99
48) 2,6-Dinitrotoluene	14.022	165	255329	39.536	ng/ul	97
50) Acenaphthylene	14.169	152	1422151	33.757	ng/ul	100
51) 3-Nitroaniline	14.351	138	254621	37.294	ng/ul	99
52) Acenaphthene	14.510	153	933281	33.915	ng/ul	98
53) 2,4-Dinitrophenol	14.557	184	118260	28.601	ng/ul	97
55) 4-Nitrophenol	14.657	109	45400	8.089	ng/ul	99
56) Dibenzofuran	14.845	168	1320873	34.071	ng/ul	97
57) 2,4-Dinitrotoluene	14.810	165	374097	39.122	ng/ul	99
58) 2,3,4,6-Tetrachlorophenol	15.075	232	248252	36.007	ng/ul	93
59) Diethylphthalate	15.275	149	1242034	36.523	ng/ul	98
61) Fluorene	15.492	166	1028467	34.092	ng/ul	99
62) 4-Chlorophenyl-phenyle...	15.492	204	479316	34.501	ng/ul	92
63) 4-Nitroaniline	15.510	138	258644	40.541	ng/ul	95
66) 4,6-Dinitro-2-methylph...	15.575	198	193182	34.889	ng/ul#	91
67) N-Nitrosodiphenylamine	15.704	169	957479	35.425	ng/ul	98
68) 4-Bromophenyl-phenylether	16.381	248	299822	36.517	ng/ul	89
69) Hexachlorobenzene	16.504	284	337420	35.752	ng/ul#	91
70) Atrazine	16.657	200	350230	37.137	ng/ul	93
71) Pentachlorophenol	16.845	266	188708	32.103	ng/ul	97
72) Phenanthrene	17.233	178	1760883	35.391	ng/ul	99
74) Anthracene	17.322	178	1778415	35.547	ng/ul	97
75) 1,2,3,4-Tetrachloroben...	13.251	216	409552	32.440	ng/uL	95
76) Pentachlorobenzene	14.775	250	402112	36.037	ng/uL	95
77) Carbazole	17.592	167	1707227	37.510	ng/ul	96
78) Di-n-butylphthalate	18.163	149	2182132	38.664	ng/ul	99
80) Fluoranthene	19.245	202	1985563	38.404	ng/ul#	95
82) Pyrene	19.610	202	2032692	38.321	ng/ul	95
83) Butylbenzylphthalate	20.516	149	1002176	41.981	ng/ul	97
84) 3,3'-Dichlorobenzidine	21.298	252	529925	35.136	ng/ul#	96
85) Benzo(a)anthracene	21.363	228	1848516	37.071	ng/ul	99
86) Bis(2-ethylhexyl)phtha...	21.298	149	1421661	42.209	ng/ul	98
87) Chrysene	21.416	228	1824017	37.390	ng/ul	96
89) Di-n-octyl phthalate	22.204	149	2556112	42.463	ng/ul	100
90) Benzo(b)fluoranthene	23.004	252	1814679	39.094	ng/ul#	97
91) Benzo(k)fluoranthene	23.051	252	1725152	39.042	ng/ul	98
93) Benzo(a)pyrene	23.610	252	1656311	36.863	ng/ul	97
94) Indeno(1,2,3-cd)pyrene	26.104	276	1602040	34.655	ng/ul#	94
95) Dibenzo(a,h)anthracene	26.121	278	1392829	35.274	ng/ul	95
96) Benzo(g,h,i)perylene	26.833	276	1373674	35.187	ng/ul	95

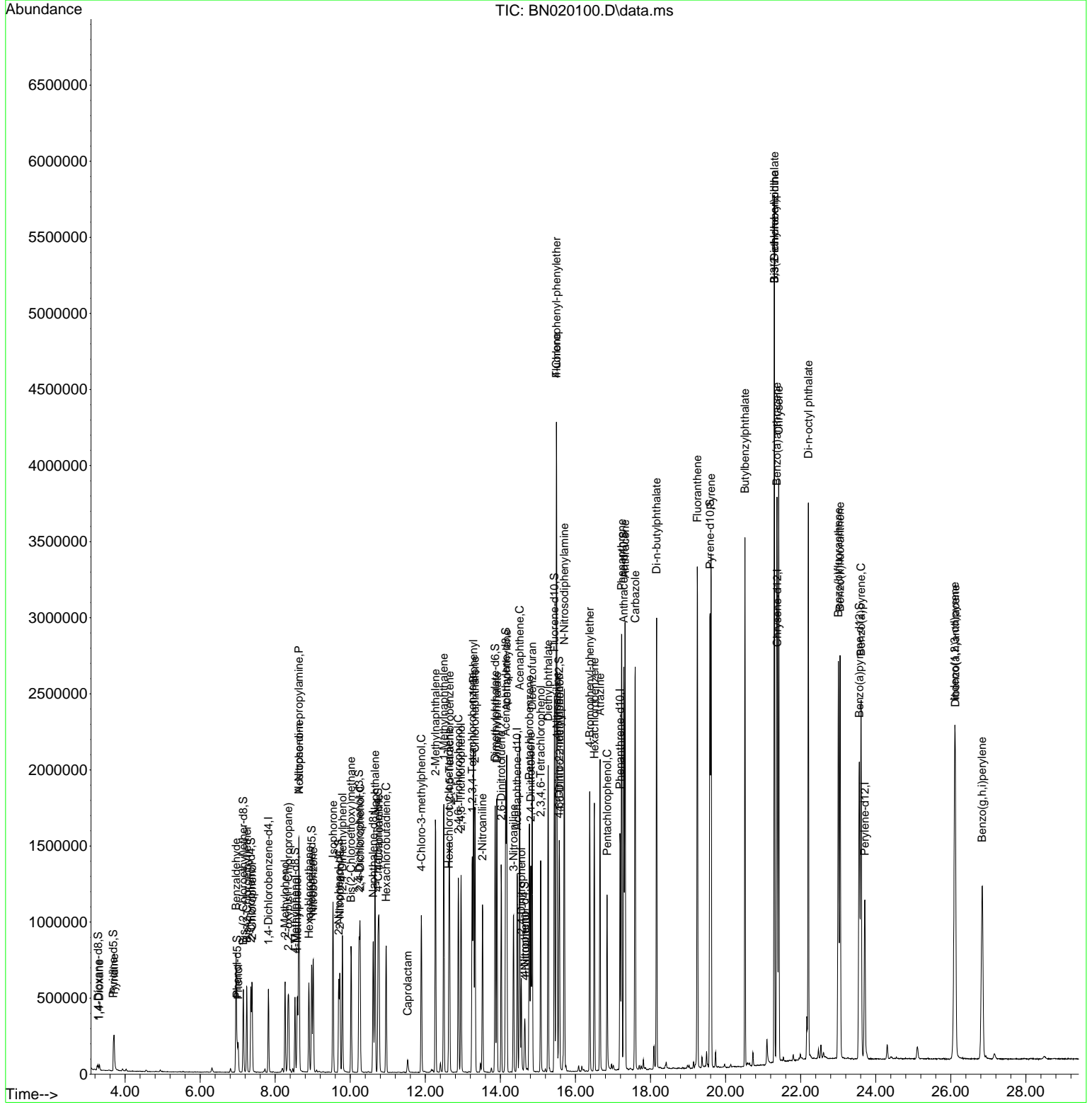
(#) = qualifier out of range (m) = manual integration (+) = signals summed

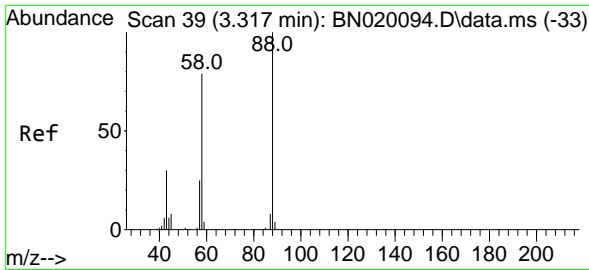
Data Path : Z:\svoasrv\HPCHEM1\BNA_N\Data\BN061122\
 Data File : BN020100.D
 Acq On : 10 Jun 2022 14:54
 Operator : CG/JU
 Sample : N3250-05MSD
 Misc :
 ALS Vial : 8 Sample Multiplier: 1

Instrument :
 BNA_N
 ClientSampleId :
 EXYW2MSDMSD

Quant Time: Jun 10 22:45:45 2022
 Quant Method : Z:\svoasrv\HPCHEM1\BNA_N\Methods\SFAM-EPA-BN060622.M
 Quant Title : SVOA CALIBRATION
 QLast Update : Mon Jun 06 15:14:59 2022
 Response via : Initial Calibration

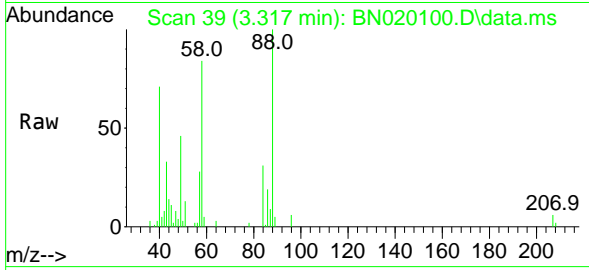
Manual Integrations
APPROVED
 Reviewed By :Jagrut Upadhyay 06/13/2022
 Supervised By :mohammad ahmed 06/14/2022





#2
 1,4-Dioxane
 Concen: 4.524 ng/uL
 RT: 3.317 min Scan# 39
 Delta R.T. 0.001 min
 Lab File: BN020100.D
 Acq: 10 Jun 2022 14:54

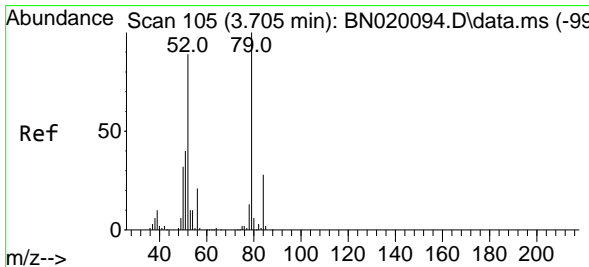
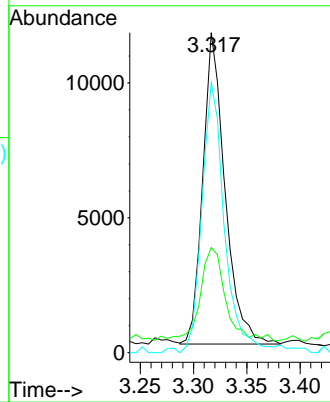
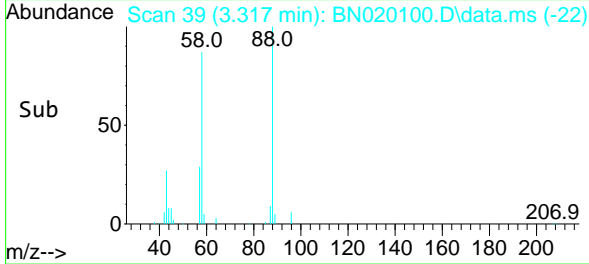
Instrument :
 BNA_N
 ClientSampleId :
 EXYW2MSDMSD



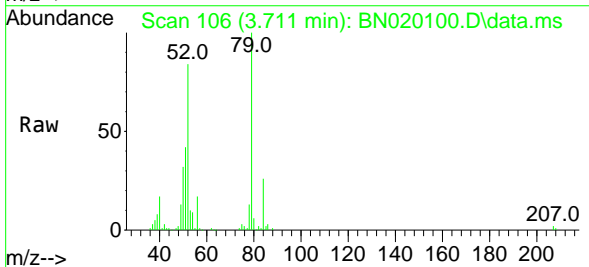
Tgt Ion: 88 Resp: 16720
 Ion Ratio Lower Upper
 88 100
 43 32.8 22.4 33.6
 58 84.5 61.0 91.4

Manual Integrations
 APPROVED

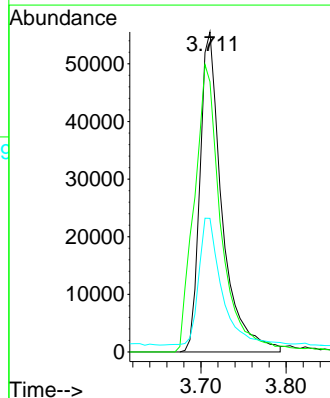
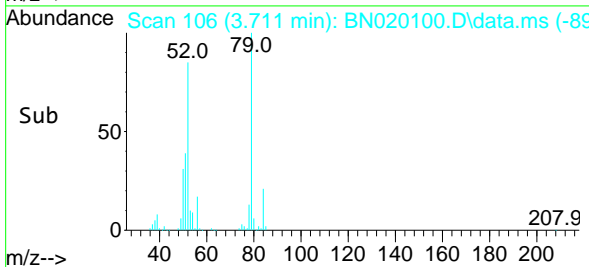
Reviewed By :Jagrut Upadhyay 06/13/2022
 Supervised By :mohammad ahmed 06/14/2022

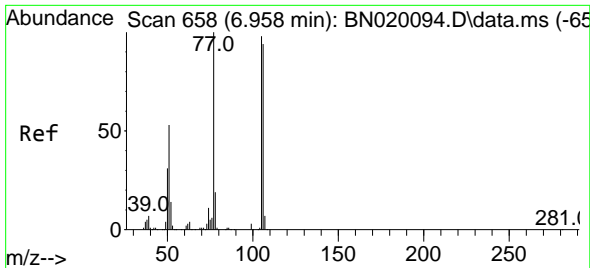


#5
 Pyridine
 Concen: 9.995 ng/uL
 RT: 3.711 min Scan# 106
 Delta R.T. 0.000 min
 Lab File: BN020100.D
 Acq: 10 Jun 2022 14:54



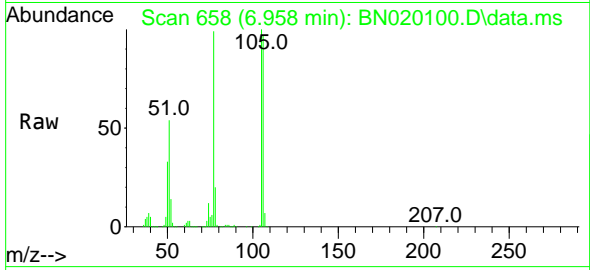
Tgt Ion: 79 Resp: 100266
 Ion Ratio Lower Upper
 79 100
 52 84.4 65.0 97.4
 51 41.8 31.6 47.4





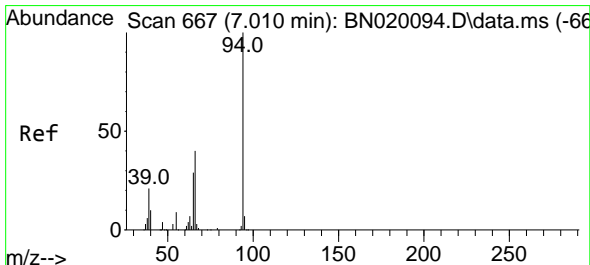
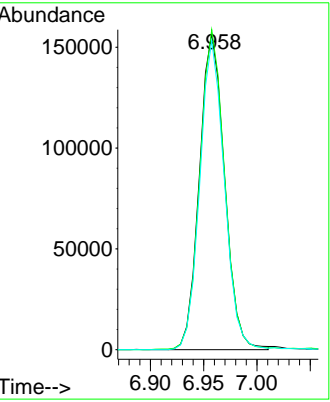
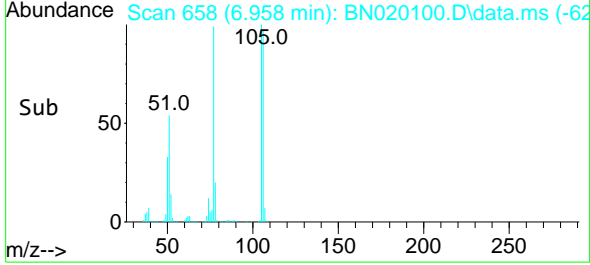
#6
 Benzaldehyde
 Concen: 43.508 ng/u1
 RT: 6.958 min Scan# 658
 Delta R.T. -0.006 min
 Lab File: BN020100.D
 Acq: 10 Jun 2022 14:54

Instrument : BNA_N
 Client Sample Id : EXYW2MSDMSD

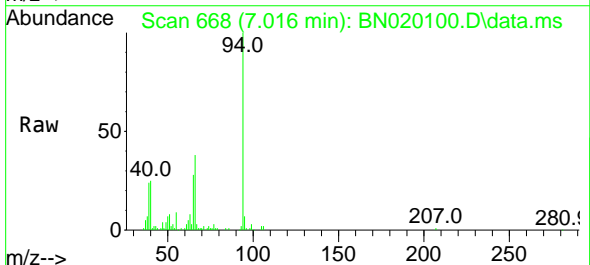


Tgt Ion: 77 Resp: 257218
 Ion Ratio Lower Upper
 77 100
 105 101.4 74.7 112.1
 106 97.9 70.2 105.4

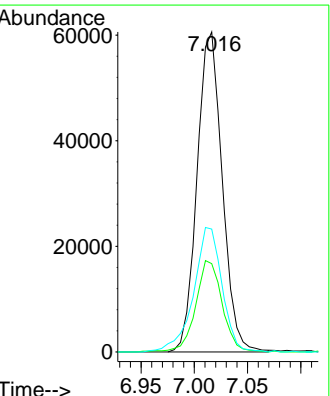
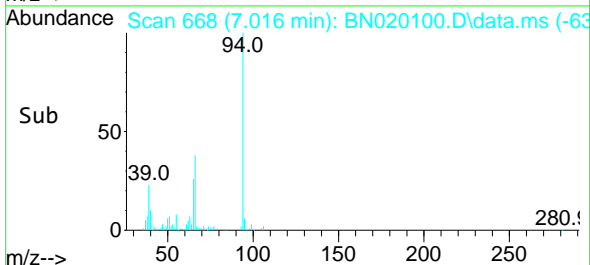
Manual Integrations
APPROVED
 Reviewed By :Jagrut Upadhyay 06/13/2022
 Supervised By :mohammad ahmed 06/14/2022

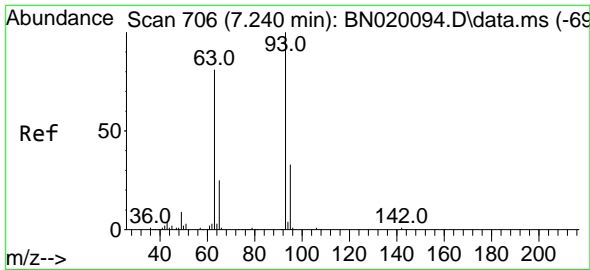


#8
 Phenol
 Concen: 7.467 ng/u1
 RT: 7.016 min Scan# 668
 Delta R.T. 0.000 min
 Lab File: BN020100.D
 Acq: 10 Jun 2022 14:54



Tgt Ion: 94 Resp: 99758
 Ion Ratio Lower Upper
 94 100
 65 27.6 23.6 35.4
 66 38.4 31.2 46.8





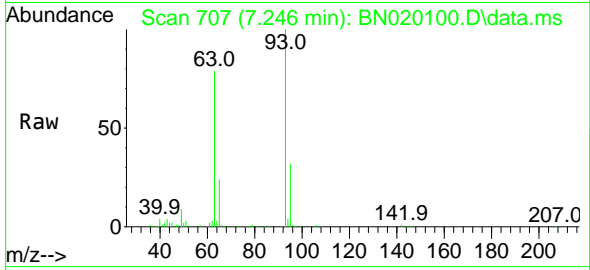
#10
 Bis(2-Chloroethyl)ether
 Concen: 30.592 ng/ul
 RT: 7.246 min Scan# 707
 Delta R.T. 0.000 min
 Lab File: BN020100.D
 Acq: 10 Jun 2022 14:54

Instrument :

BNA_N

ClientSampleId :

EXYW2MSDMSD

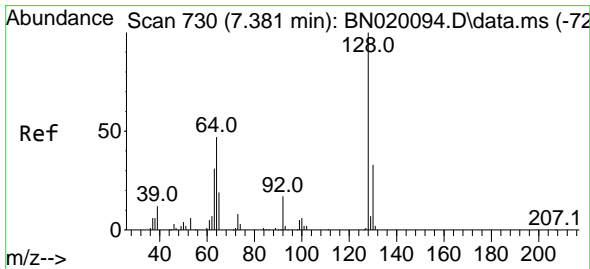
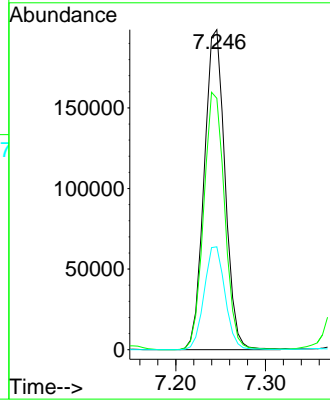
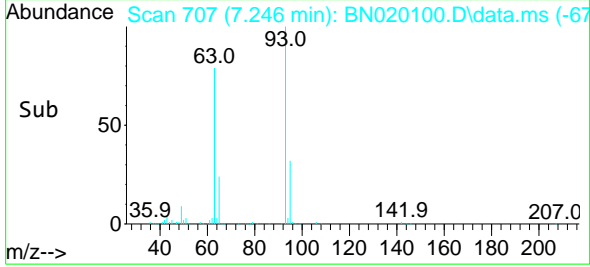


Tgt Ion: 93 Resp: 31990
 Ion Ratio Lower Upper
 93 100
 63 78.6 63.4 95.0
 95 32.2 26.2 39.2

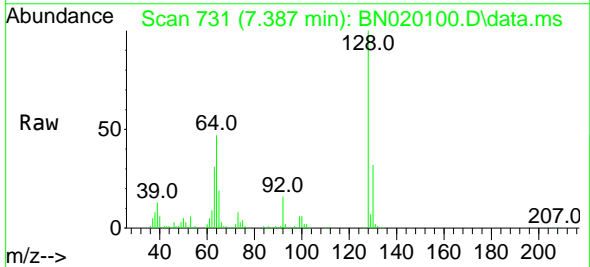
Manual Integrations

APPROVED

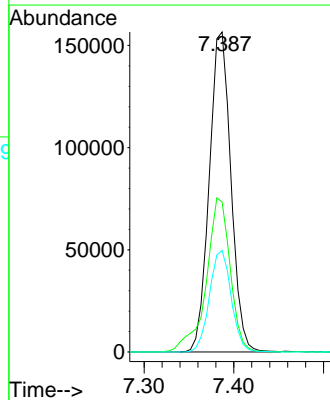
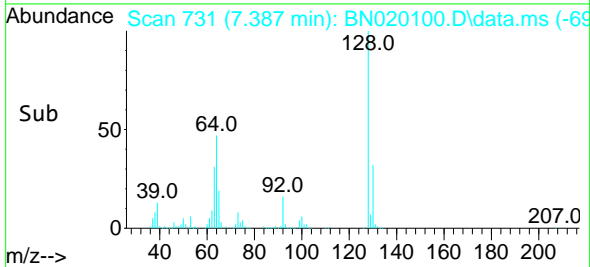
Reviewed By :Jagrut Upadhyay 06/13/2022
 Supervised By :mohammad ahmed 06/14/2022

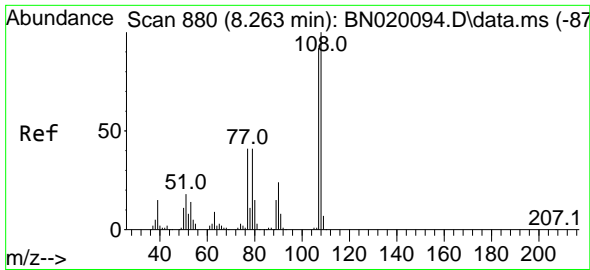


#12
 2-Chlorophenol
 Concen: 24.660 ng/ul
 RT: 7.387 min Scan# 731
 Delta R.T. 0.000 min
 Lab File: BN020100.D
 Acq: 10 Jun 2022 14:54



Tgt Ion:128 Resp: 262787
 Ion Ratio Lower Upper
 128 100
 64 46.8 38.6 57.8
 130 31.7 25.0 37.4





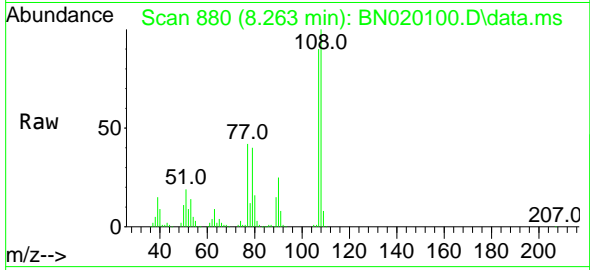
#13
 2-Methylphenol
 Concen: 19.568 ng/u1
 RT: 8.263 min Scan# 880
 Delta R.T. 0.000 min
 Lab File: BN020100.D
 Acq: 10 Jun 2022 14:54

Instrument :

BNA_N

ClientSampleId :

EXYW2MSDMSD

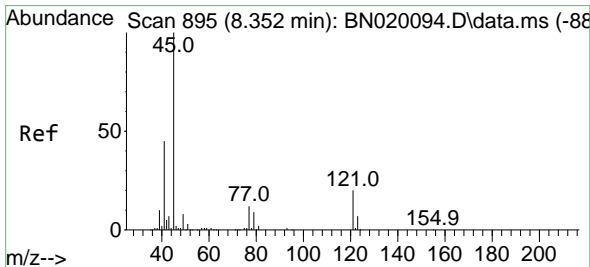
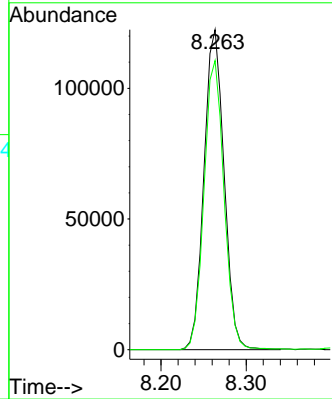
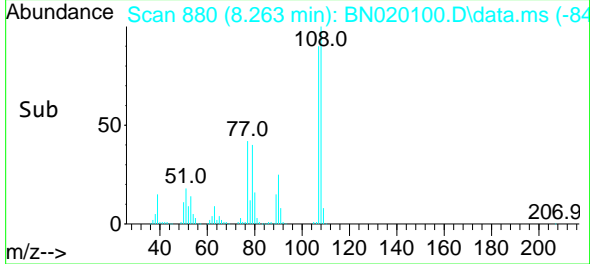


Tgt Ion:108 Resp: 20098
 Ion Ratio Lower Upper
 108 100
 107 90.4 71.5 107.3

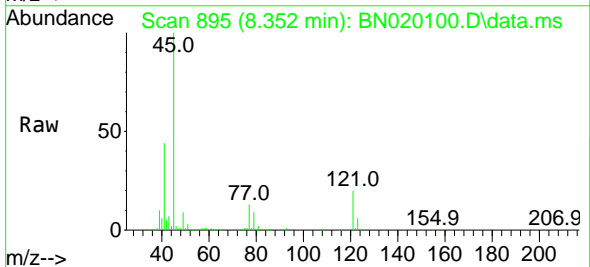
Manual Integrations

APPROVED

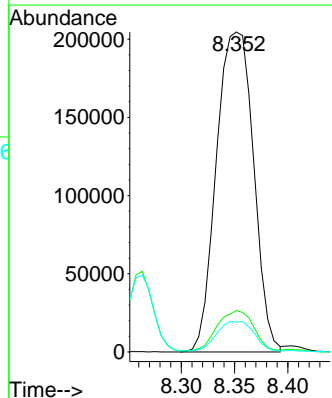
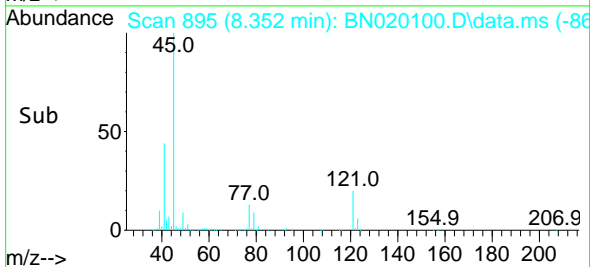
Reviewed By :Jagrut Upadhyay 06/13/2022
 Supervised By :mohammad ahmed 06/14/2022

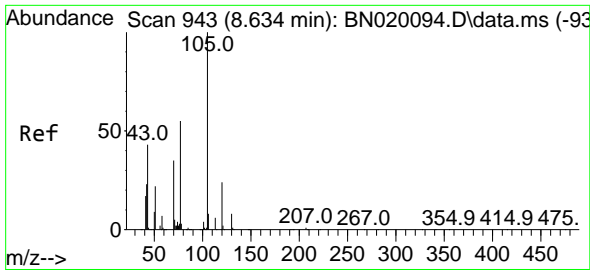


#14
 2,2'-oxybis(1-Chloropropane)
 Concen: 30.242 ng/u1
 RT: 8.352 min Scan# 895
 Delta R.T. -0.006 min
 Lab File: BN020100.D
 Acq: 10 Jun 2022 14:54



Tgt Ion: 45 Resp: 495901
 Ion Ratio Lower Upper
 45 100
 77 12.9 10.9 16.3
 79 9.4 8.6 13.0





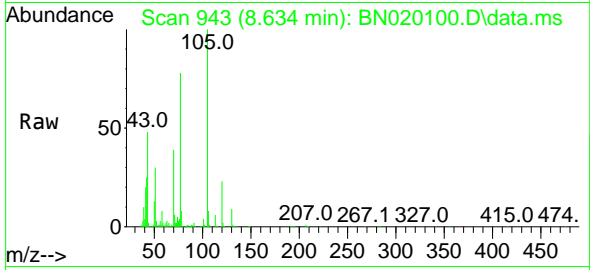
#16
 Acetophenone
 Concen: 32.260 ng/u1
 RT: 8.634 min Scan# 943
 Delta R.T. -0.006 min
 Lab File: BN020100.D
 Acq: 10 Jun 2022 14:54

Instrument :

BNA_N

ClientSampleId :

EXYW2MSDMSD

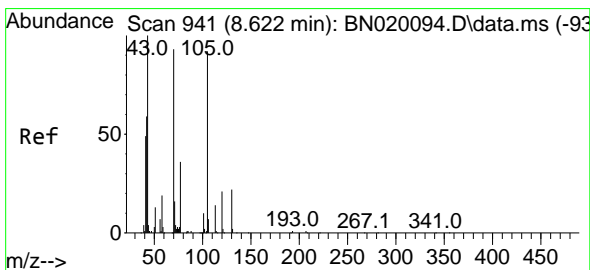
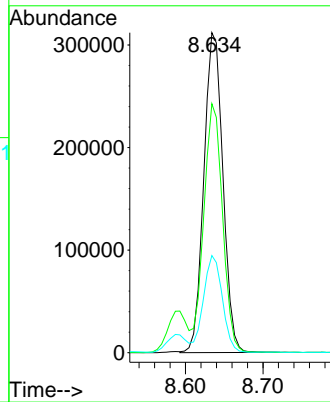
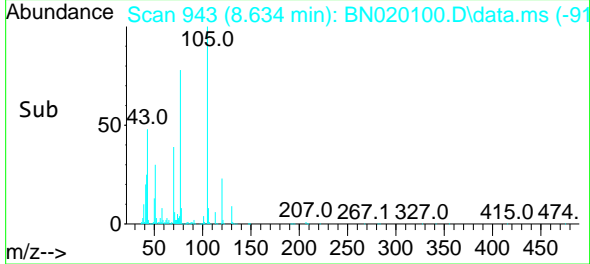


Tgt Ion:105 Resp: 53255
 Ion Ratio Lower Upper
 105 100
 77 77.8 63.5 95.3
 51 30.3 23.5 35.3

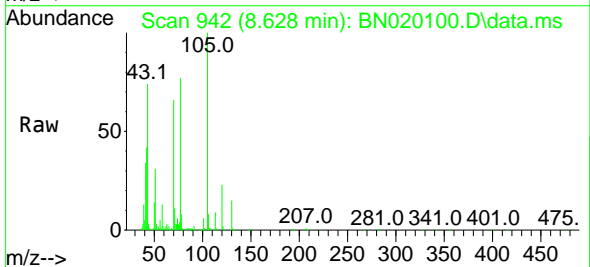
Manual Integrations

APPROVED

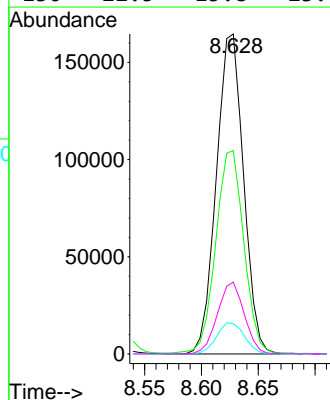
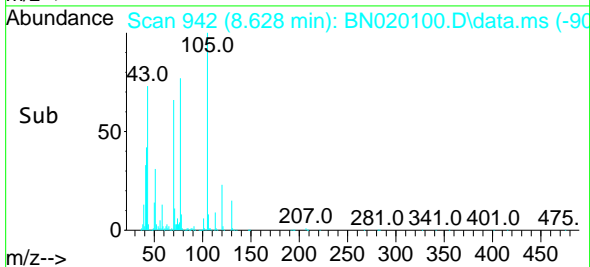
Reviewed By :Jagrut Upadhyay 06/13/2022
 Supervised By :mohammad ahmed 06/14/2022

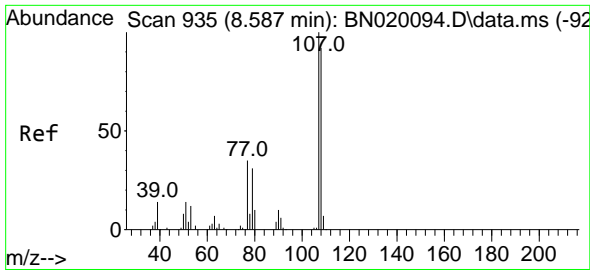


#17
 N-Nitroso-di-n-propylamine
 Concen: 32.567 ng/u1
 RT: 8.628 min Scan# 942
 Delta R.T. 0.000 min
 Lab File: BN020100.D
 Acq: 10 Jun 2022 14:54



Tgt Ion: 70 Resp: 274645
 Ion Ratio Lower Upper
 70 100
 42 63.5 47.8 71.6
 101 9.4 7.8 11.6
 130 22.5 15.8 23.8





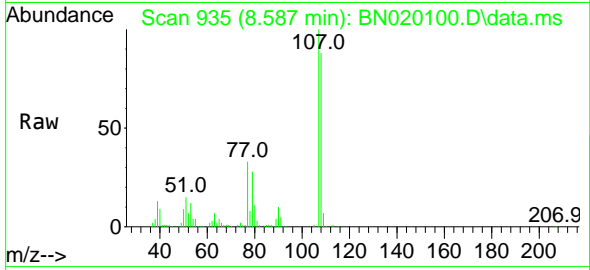
#18
 4-Methylphenol
 Concen: 17.335 ng/u1
 RT: 8.587 min Scan# 911
 Delta R.T. -0.006 min
 Lab File: BN020100.D
 Acq: 10 Jun 2022 14:54

Instrument :

BNA_N

ClientSampleId :

EXYW2MSDMSD

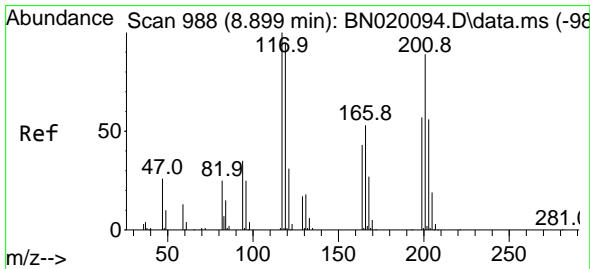
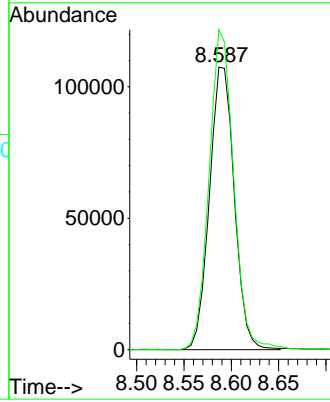
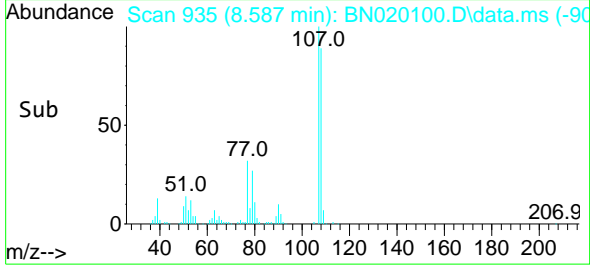


Tgt Ion:108 Resp: 19652
 Ion Ratio Lower Upper
 108 100
 107 113.2 88.0 132.0

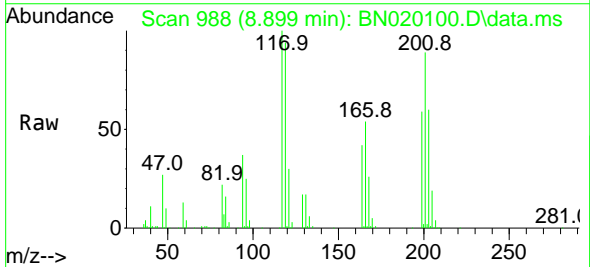
Manual Integrations

APPROVED

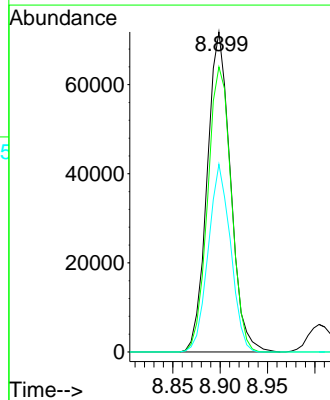
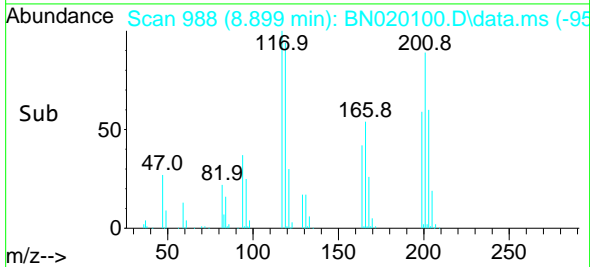
Reviewed By :Jagrut Upadhyay 06/13/2022
 Supervised By :mohammad ahmed 06/14/2022

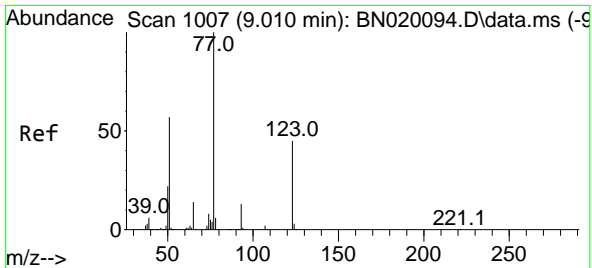


#19
 Hexachloroethane
 Concen: 28.765 ng/u1
 RT: 8.899 min Scan# 988
 Delta R.T. -0.006 min
 Lab File: BN020100.D
 Acq: 10 Jun 2022 14:54



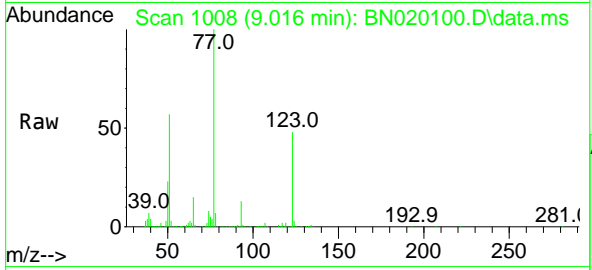
Tgt Ion:117 Resp: 123340
 Ion Ratio Lower Upper
 117 100
 201 89.1 83.2 124.8
 199 58.7 50.2 75.4





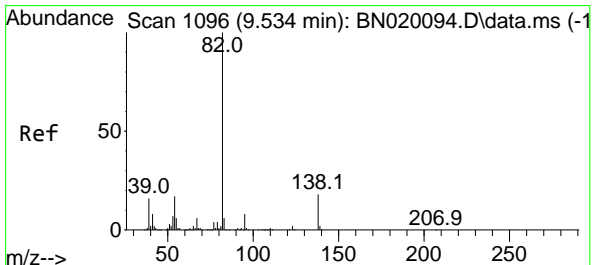
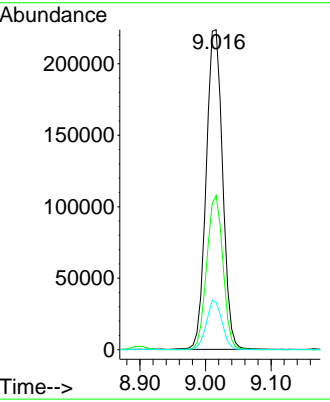
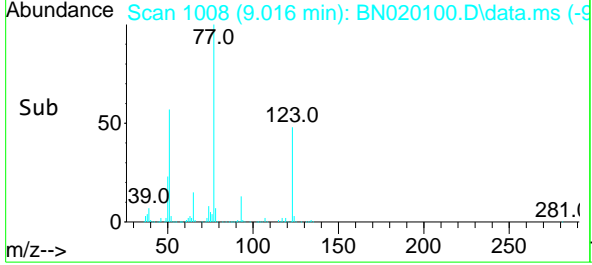
#22
 Nitrobenzene
 Concen: 30.862 ng/u1
 RT: 9.016 min Scan# 1007
 Delta R.T. 0.000 min
 Lab File: BN020100.D
 Acq: 10 Jun 2022 14:54

Instrument : BNA_N
 ClientSampleId : EXYW2MSDMSD

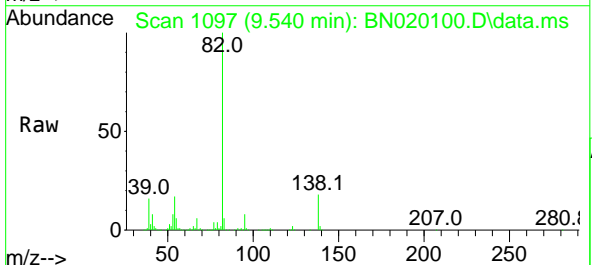


Tgt Ion: 77 Resp: 387779
 Ion Ratio Lower Upper
 77 100
 123 48.2 34.5 51.7
 65 14.9 11.1 16.7

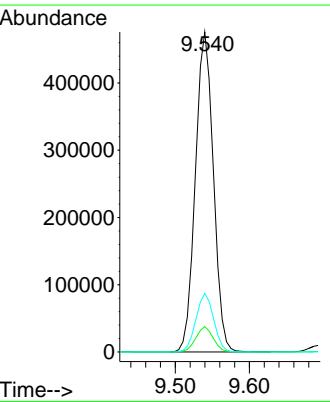
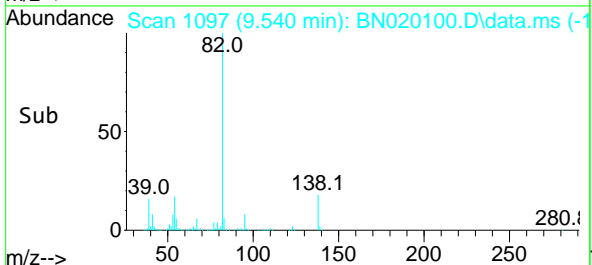
Manual Integrations
APPROVED
 Reviewed By :Jagrut Upadhyay 06/13/2022
 Supervised By :mohammad ahmed 06/14/2022

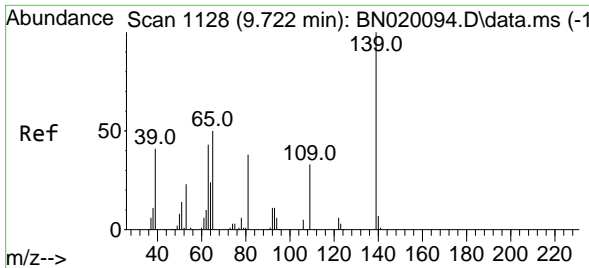


#23
 Isophorone
 Concen: 32.386 ng/u1
 RT: 9.540 min Scan# 1097
 Delta R.T. 0.000 min
 Lab File: BN020100.D
 Acq: 10 Jun 2022 14:54



Tgt Ion: 82 Resp: 803480
 Ion Ratio Lower Upper
 82 100
 95 7.9 5.8 8.8
 138 18.3 13.8 20.8





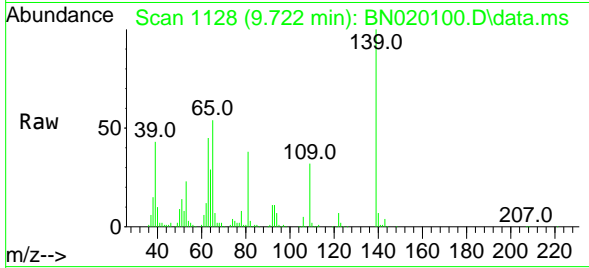
#25
 2-Nitrophenol
 Concen: 31.464 ng/ul
 RT: 9.722 min Scan# 1110
 Delta R.T. -0.006 min
 Lab File: BN020100.D
 Acq: 10 Jun 2022 14:54

Instrument :

BNA_N

ClientSampleId :

EXYW2MSDMSD

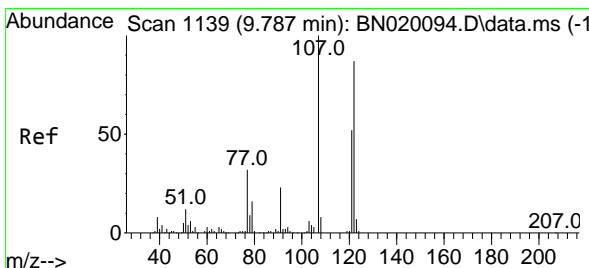
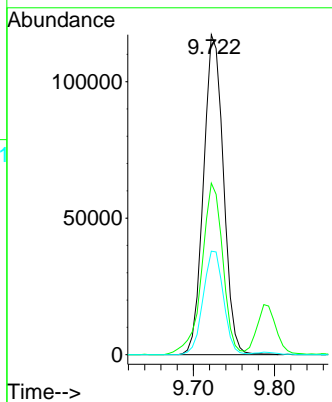
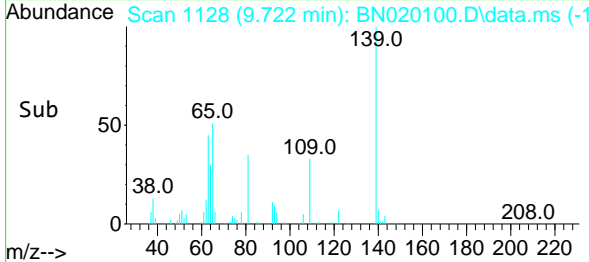


Tgt Ion:139 Resp: 199958
 Ion Ratio Lower Upper
 139 100
 65 53.6 43.7 65.5
 109 32.3 25.8 38.6

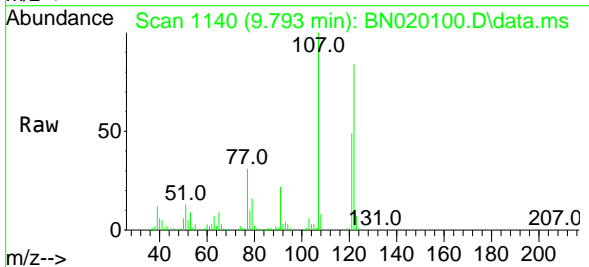
Manual Integrations

APPROVED

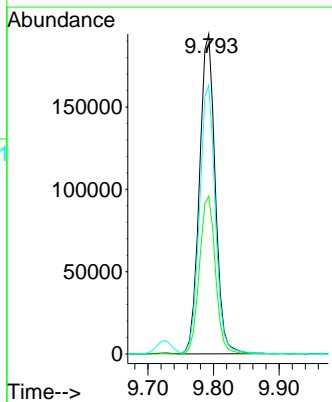
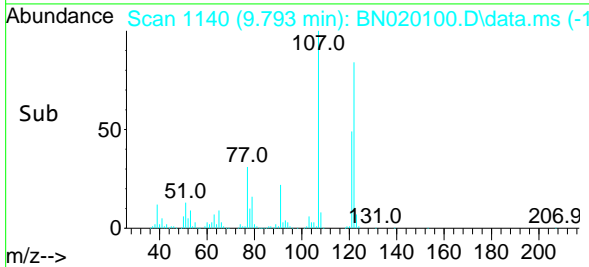
Reviewed By :Jagrut Upadhyay 06/13/2022
 Supervised By :mohammad ahmed 06/14/2022

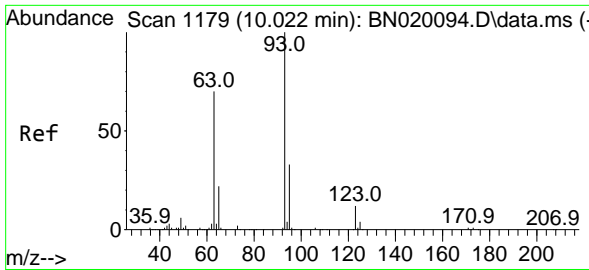


#26
 2,4-Dimethylphenol
 Concen: 24.732 ng/ul
 RT: 9.793 min Scan# 1140
 Delta R.T. 0.000 min
 Lab File: BN020100.D
 Acq: 10 Jun 2022 14:54



Tgt Ion:107 Resp: 325619
 Ion Ratio Lower Upper
 107 100
 121 49.3 38.3 57.5
 122 84.0 66.3 99.5





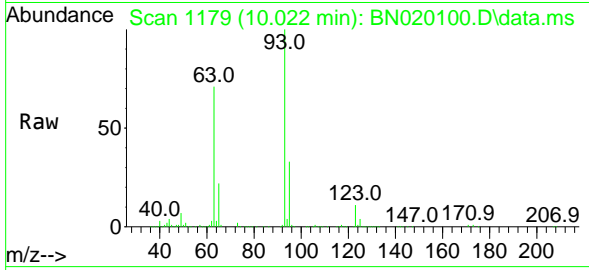
#27
 Bis(2-Chloroethoxy)methane
 Concen: 30.765 ng/ul
 RT: 10.022 min Scan# 1179
 Delta R.T. -0.006 min
 Lab File: BN020100.D
 Acq: 10 Jun 2022 14:54

Instrument :

BNA_N

ClientSampleId :

EXYW2MSDMSD

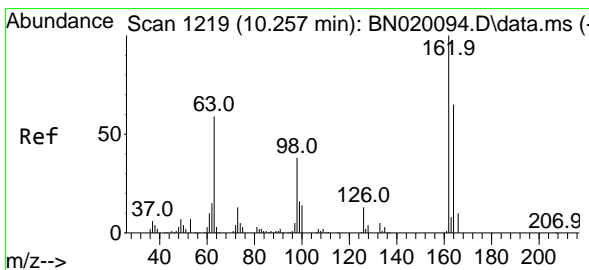
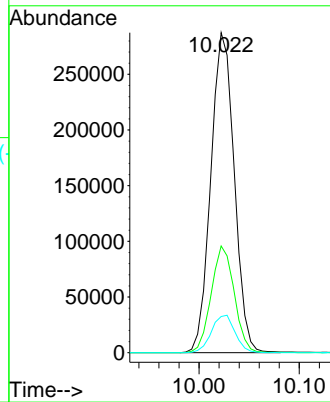
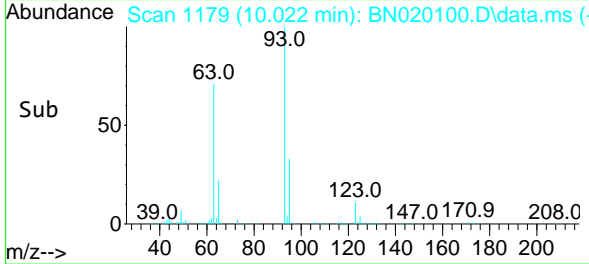


Tgt Ion: 93 Resp: 46708
 Ion Ratio Lower Upper
 93 100
 95 33.3 25.4 38.0
 123 11.3 8.3 12.5

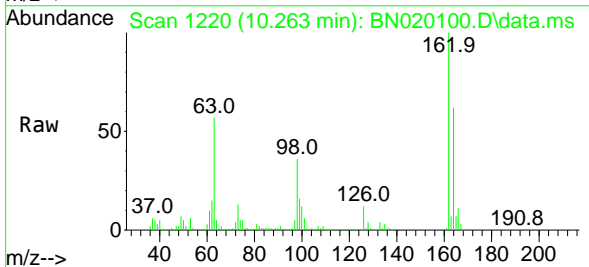
Manual Integrations

APPROVED

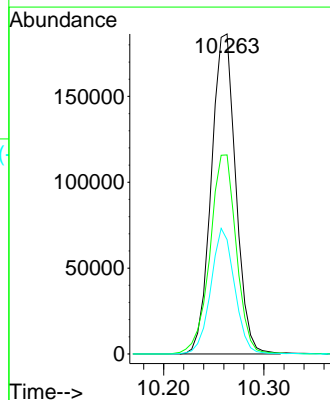
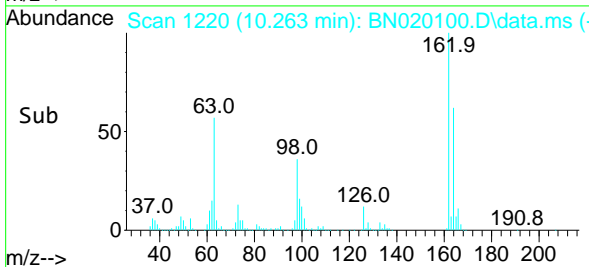
Reviewed By :Jagrut Upadhyay 06/13/2022
 Supervised By :mohammad ahmed 06/14/2022

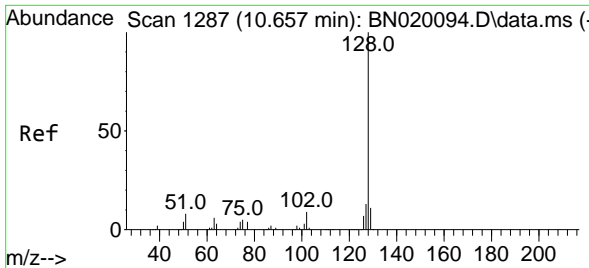


#29
 2,4-Dichlorophenol
 Concen: 30.466 ng/ul
 RT: 10.263 min Scan# 1220
 Delta R.T. 0.000 min
 Lab File: BN020100.D
 Acq: 10 Jun 2022 14:54



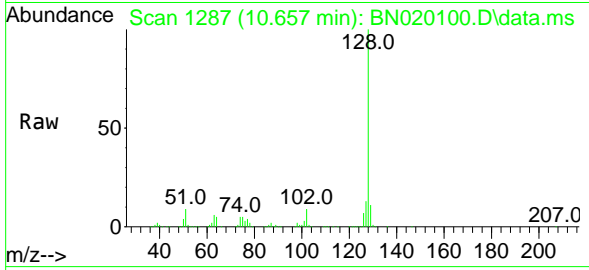
Tgt Ion:162 Resp: 316405
 Ion Ratio Lower Upper
 162 100
 164 62.2 52.9 79.3
 98 35.7 29.8 44.8





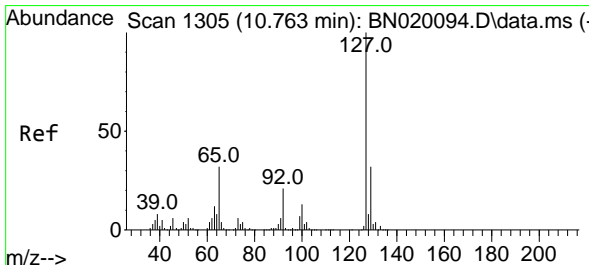
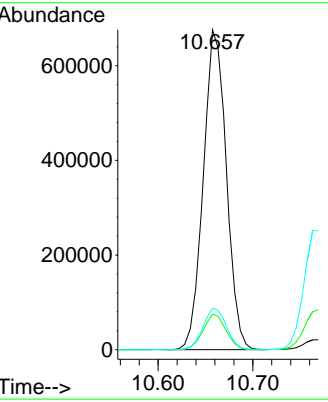
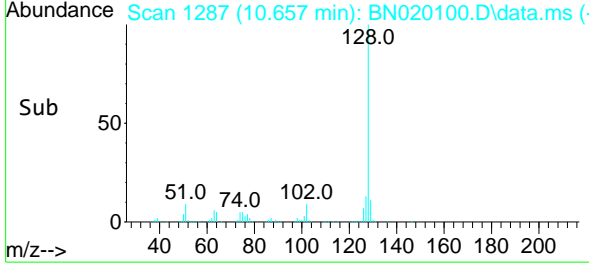
#30
 Naphthalene
 Concen: 30.984 ng/u1
 RT: 10.657 min Scan# 11
 Delta R.T. -0.006 min
 Lab File: BN020100.D
 Acq: 10 Jun 2022 14:54

Instrument : BNA_N
 ClientSampleId : EXYW2MSDMSD

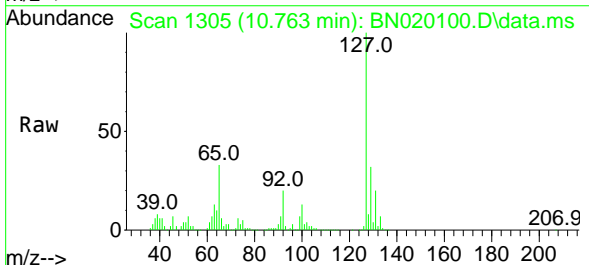


Tgt Ion:128 Resp: 114384
 Ion Ratio Lower Upper
 128 100
 129 11.1 8.7 13.1
 127 12.9 10.6 16.0

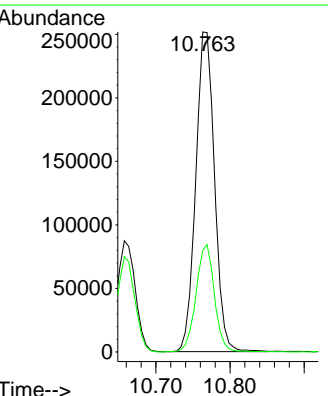
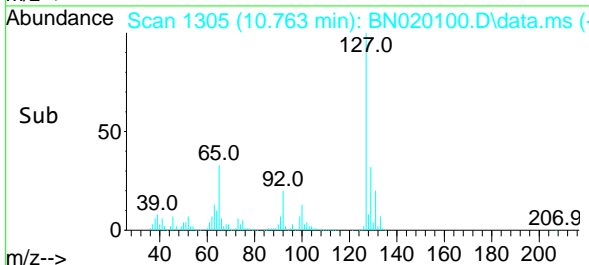
Manual Integrations
APPROVED
 Reviewed By :Jagrut Upadhyay 06/13/2022
 Supervised By :mohammad ahmed 06/14/2022

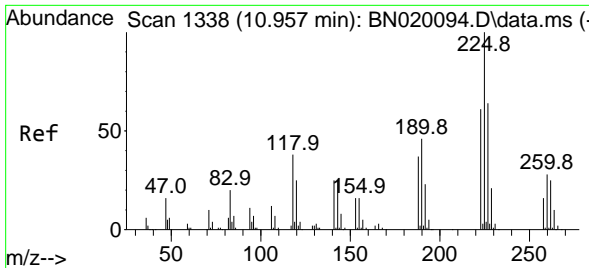


#32
 4-Chloroaniline
 Concen: 27.241 ng/u1
 RT: 10.763 min Scan# 1305
 Delta R.T. -0.006 min
 Lab File: BN020100.D
 Acq: 10 Jun 2022 14:54



Tgt Ion:127 Resp: 443007
 Ion Ratio Lower Upper
 127 100
 129 31.9 26.1 39.1





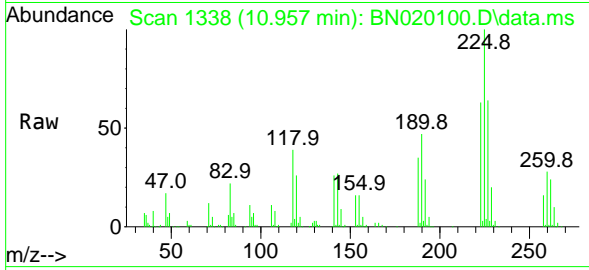
#33
 Hexachlorobutadiene
 Concen: 28.836 ng/u1
 RT: 10.957 min Scan# 111
 Delta R.T. 0.000 min
 Lab File: BN020100.D
 Acq: 10 Jun 2022 14:54

Instrument :

BNA_N

ClientSampleId :

EXYW2MSDMSD

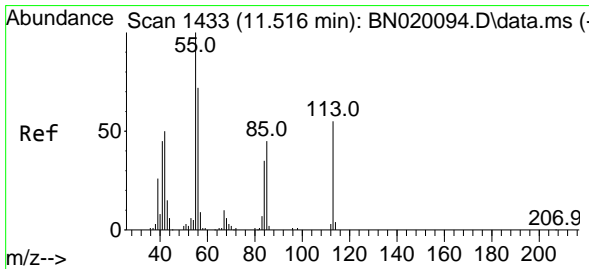
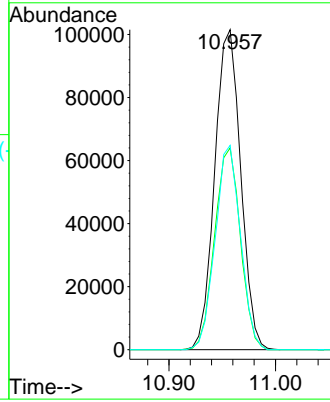
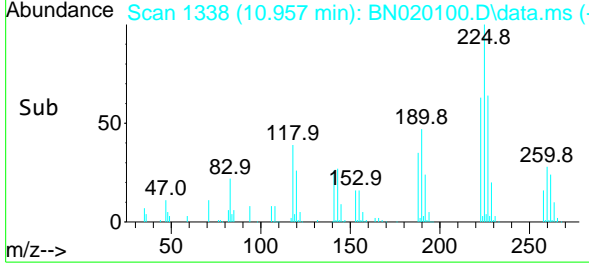


Tgt Ion:225 Resp: 171940
 Ion Ratio Lower Upper
 225 100
 223 63.1 51.8 77.6
 227 63.9 50.6 76.0

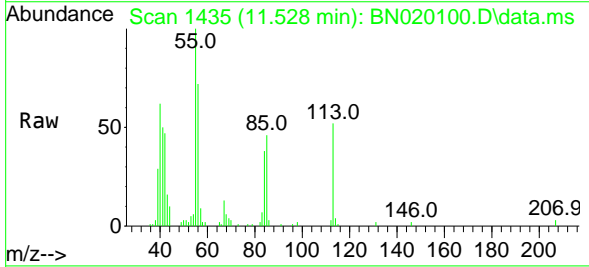
Manual Integrations

APPROVED

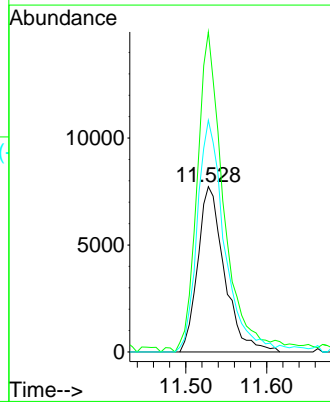
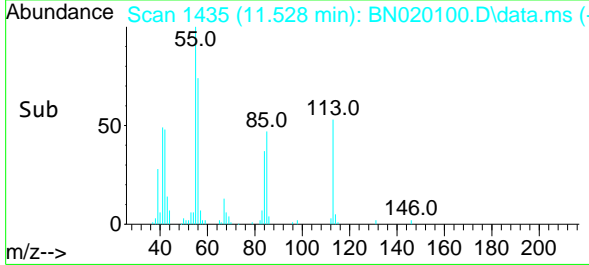
Reviewed By :Jagrut Upadhyay 06/13/2022
 Supervised By :mohammad ahmed 06/14/2022

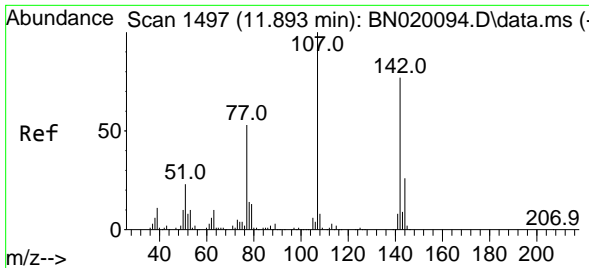


#34
 Caprolactam
 Concen: 4.373 ng/u1 m
 RT: 11.528 min Scan# 1435
 Delta R.T. 0.012 min
 Lab File: BN020100.D
 Acq: 10 Jun 2022 14:54



Tgt Ion:113 Resp: 17734
 Ion Ratio Lower Upper
 113 100
 55 193.5 145.5 218.3
 56 140.2 106.5 159.7





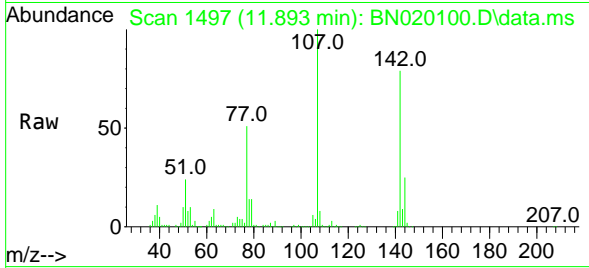
#35
 4-Chloro-3-methylphenol
 Concen: 29.802 ng/ul
 RT: 11.893 min Scan# 1497
 Delta R.T. -0.006 min
 Lab File: BN020100.D
 Acq: 10 Jun 2022 14:54

Instrument :

BNA_N

ClientSampleId :

EXYW2MSDMSD

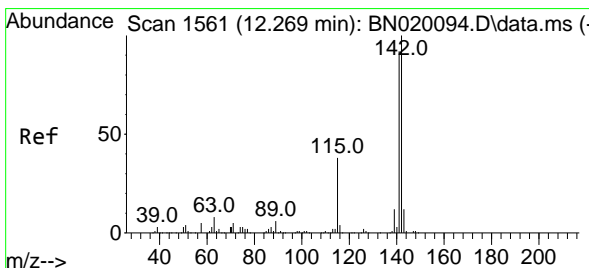
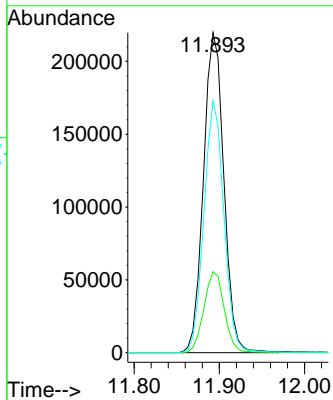
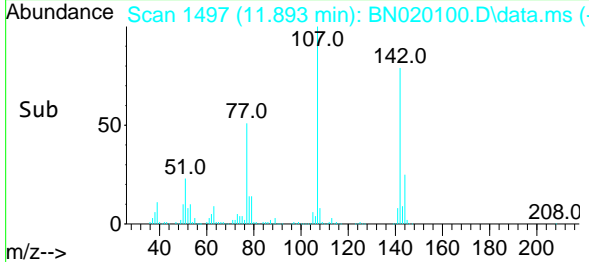


Tgt Ion:107 Resp: 365464
 Ion Ratio Lower Upper
 107 100
 144 25.3 20.6 31.0
 142 78.7 62.2 93.4

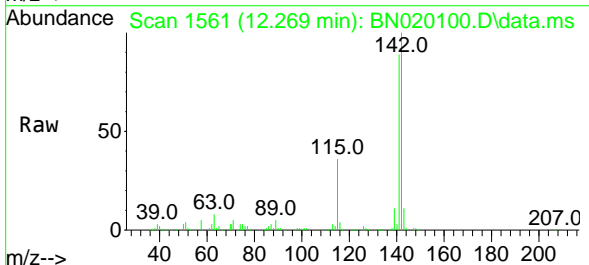
Manual Integrations

APPROVED

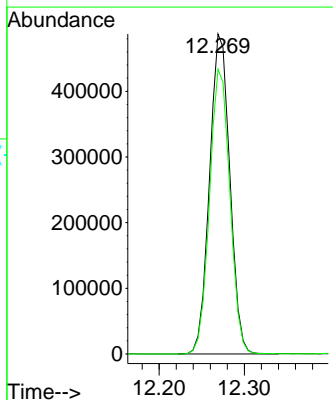
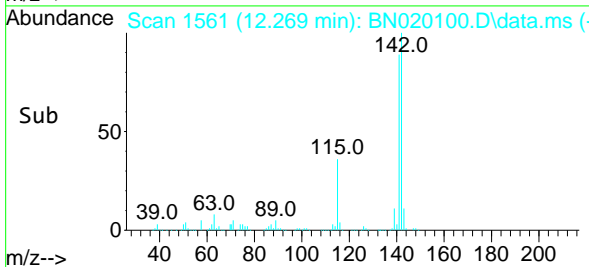
Reviewed By :Jagrut Upadhyay 06/13/2022
 Supervised By :mohammad ahmed 06/14/2022

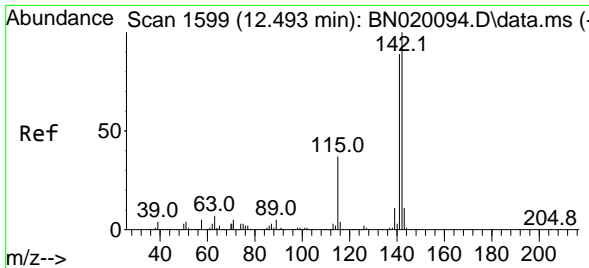


#36
 2-Methylnaphthalene
 Concen: 32.257 ng/ul
 RT: 12.269 min Scan# 1561
 Delta R.T. -0.006 min
 Lab File: BN020100.D
 Acq: 10 Jun 2022 14:54



Tgt Ion:142 Resp: 805077
 Ion Ratio Lower Upper
 142 100
 141 88.9 70.6 105.8





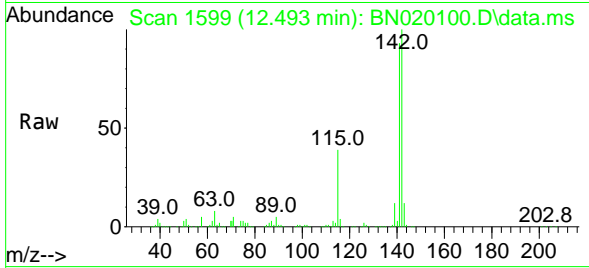
#37
 1-Methylnaphthalene
 Concen: 32.538 ng/ul
 RT: 12.493 min Scan# 1599
 Delta R.T. 0.000 min
 Lab File: BN020100.D
 Acq: 10 Jun 2022 14:54

Instrument :

BNA_N

ClientSampleId :

EXYW2MSDMSD

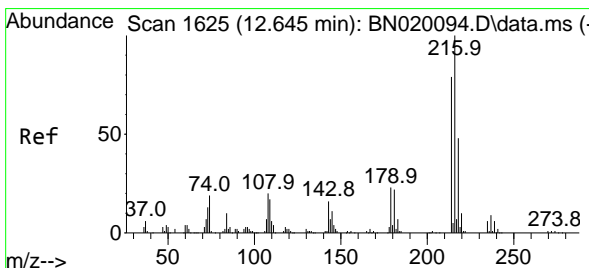
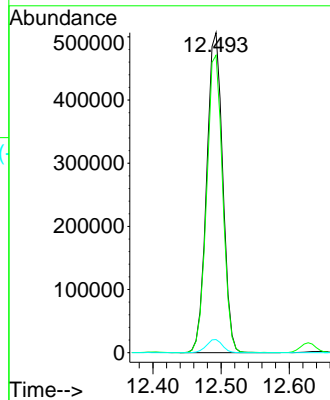
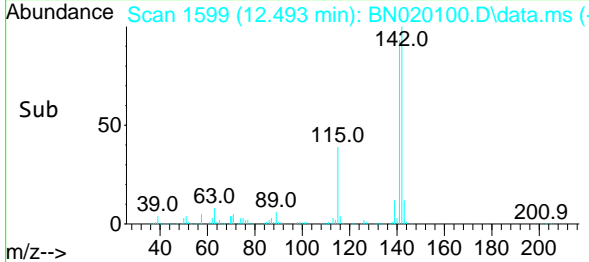


Tgt Ion:142 Resp: 828730
 Ion Ratio Lower Upper
 142 100
 141 93.0 70.9 106.3
 116 4.1 3.1 4.7

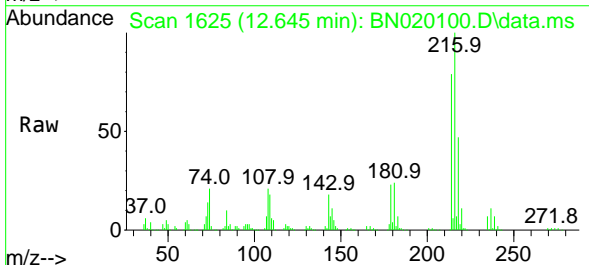
Manual Integrations

APPROVED

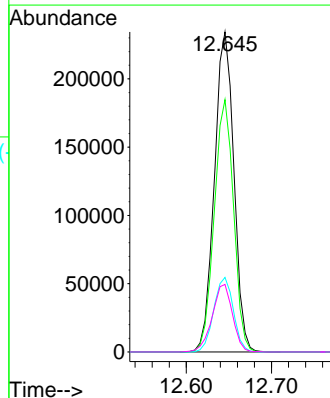
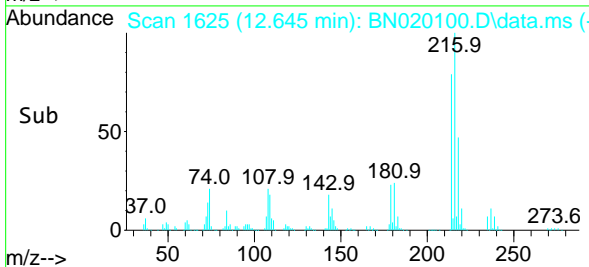
Reviewed By :Jagrut Upadhyay 06/13/2022
 Supervised By :mohammad ahmed 06/14/2022

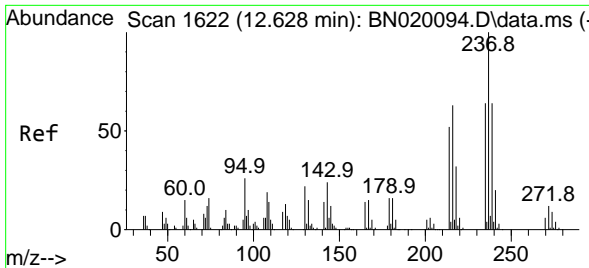


#39
 1,2,4,5-Tetrachlorobenzene
 Concen: 32.381 ng/ul
 RT: 12.645 min Scan# 1625
 Delta R.T. -0.006 min
 Lab File: BN020100.D
 Acq: 10 Jun 2022 14:54



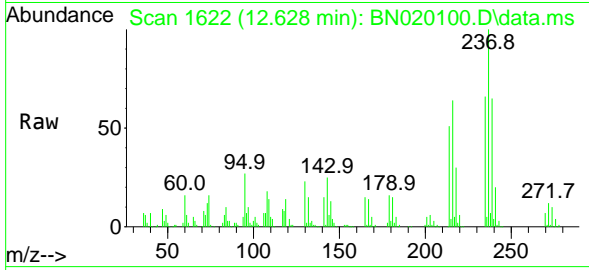
Tgt Ion:216 Resp: 372418
 Ion Ratio Lower Upper
 216 100
 214 78.9 63.4 95.0
 179 23.3 17.8 26.8
 108 21.1 15.1 22.7





#40
 Hexachlorocyclopentadiene
 Concen: 23.589 ng/ul
 RT: 12.628 min Scan# 1622
 Delta R.T. -0.006 min
 Lab File: BN020100.D
 Acq: 10 Jun 2022 14:54

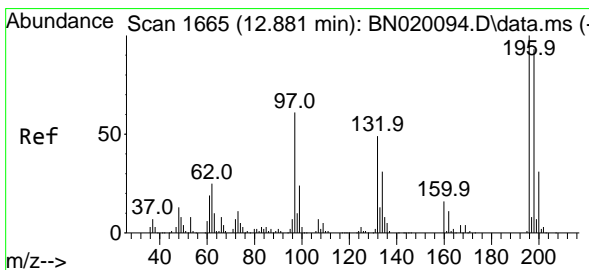
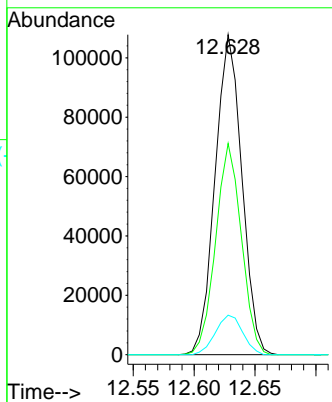
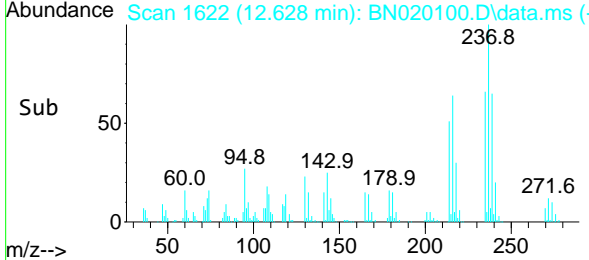
Instrument :
 BNA_N
ClientSampleId :
 EXYW2MSDMSD



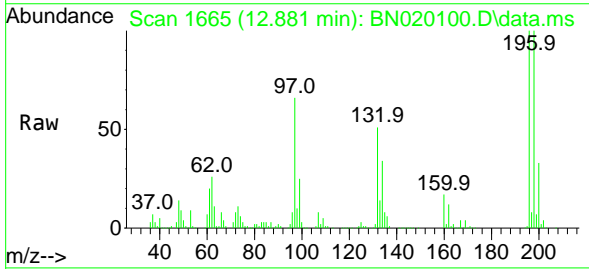
Tgt Ion:237 Resp: 165030
 Ion Ratio Lower Upper
 237 100
 235 66.0 48.8 73.2
 272 13.1 9.3 13.9

Manual Integrations
APPROVED

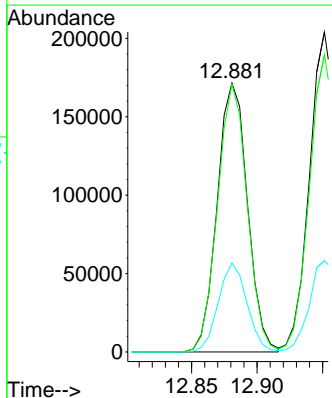
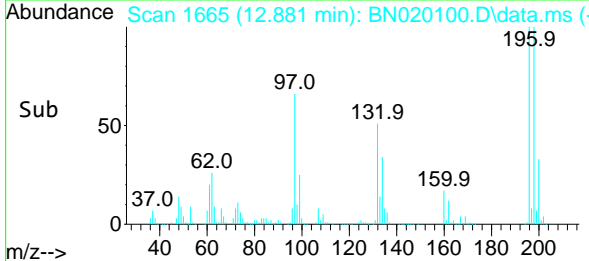
Reviewed By :Jagrut Upadhyay 06/13/2022
 Supervised By :mohammad ahmed 06/14/2022

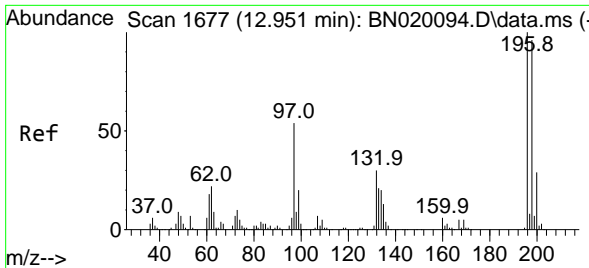


#41
 2,4,6-Trichlorophenol
 Concen: 34.743 ng/ul
 RT: 12.881 min Scan# 1665
 Delta R.T. -0.006 min
 Lab File: BN020100.D
 Acq: 10 Jun 2022 14:54



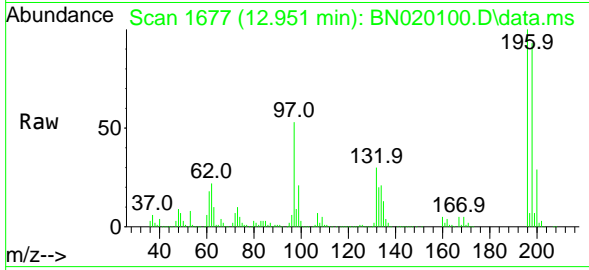
Tgt Ion:196 Resp: 275523
 Ion Ratio Lower Upper
 196 100
 198 99.6 79.8 119.8
 200 33.1 25.0 37.6





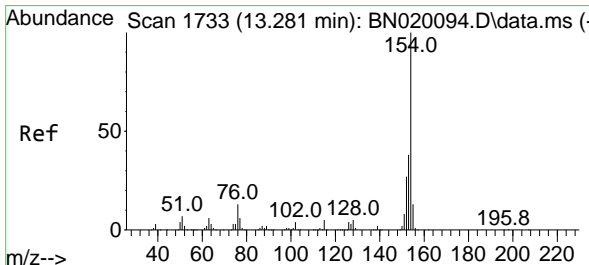
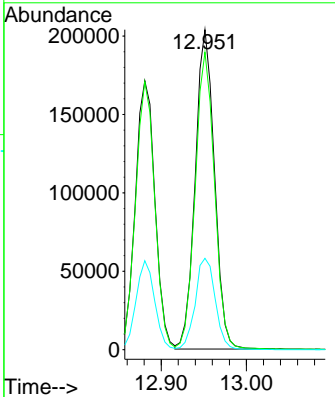
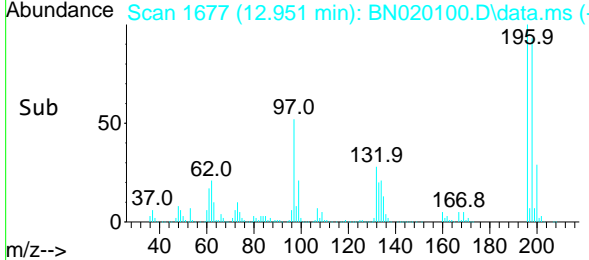
#42
 2,4,5-Trichlorophenol
 Concen: 36.316 ng/uI
 RT: 12.951 min Scan# 1677
 Delta R.T. -0.006 min
 Lab File: BN020100.D
 Acq: 10 Jun 2022 14:54

Instrument : BNA_N
 ClientSampleId : EXYW2MSDMSD

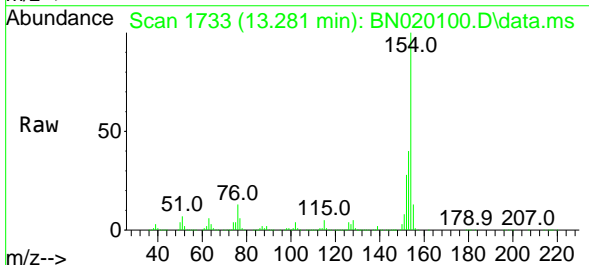


Tgt Ion:196 Resp: 318958
 Ion Ratio Lower Upper
 196 100
 198 93.0 77.6 116.4
 200 28.6 24.4 36.6

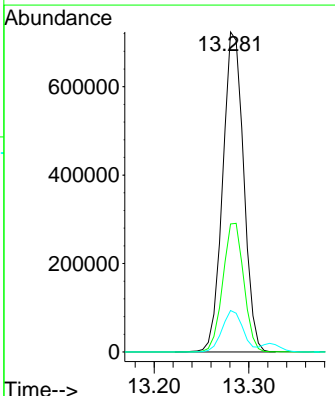
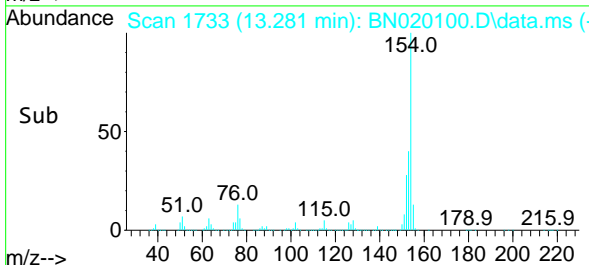
Manual Integrations
APPROVED
 Reviewed By :Jagrut Upadhyay 06/13/2022
 Supervised By :mohammad ahmed 06/14/2022

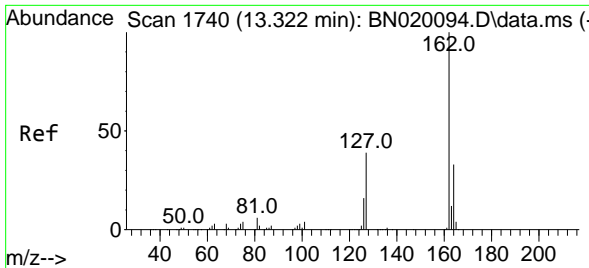


#43
 1,1'-Biphenyl
 Concen: 33.265 ng/uI
 RT: 13.281 min Scan# 1733
 Delta R.T. -0.006 min
 Lab File: BN020100.D
 Acq: 10 Jun 2022 14:54



Tgt Ion:154 Resp: 1110773
 Ion Ratio Lower Upper
 154 100
 153 40.0 31.5 47.3
 76 12.9 10.5 15.7





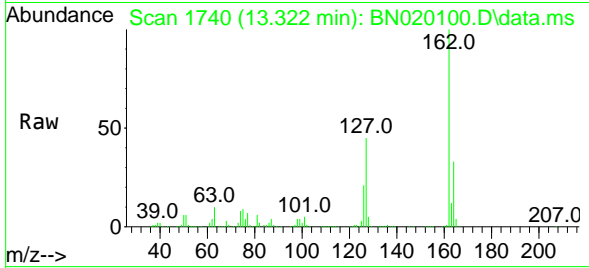
#44
 2-Chloronaphthalene
 Concen: 33.246 ng/uI
 RT: 13.322 min Scan# 1740
 Delta R.T. -0.006 min
 Lab File: BN020100.D
 Acq: 10 Jun 2022 14:54

Instrument :

BNA_N

ClientSampleId :

EXYW2MSDMSD

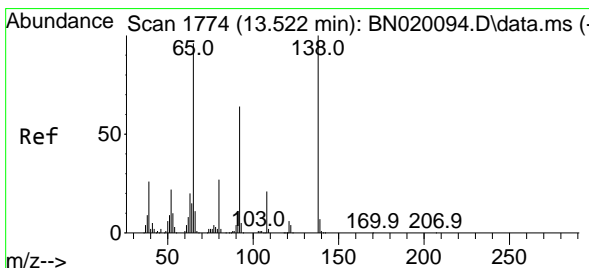
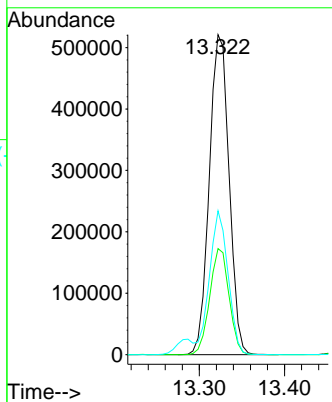
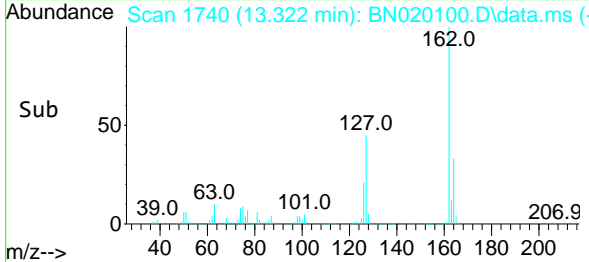


Tgt Ion:162 Resp: 84217
 Ion Ratio Lower Upper
 162 100
 164 33.2 25.8 38.6
 127 44.9 31.4 47.2

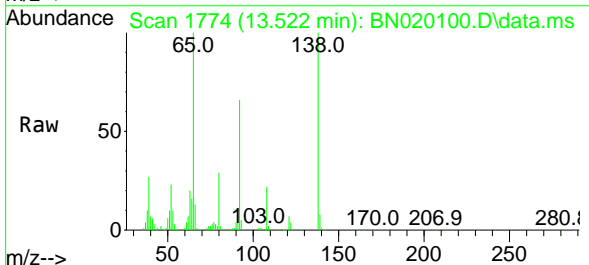
Manual Integrations

APPROVED

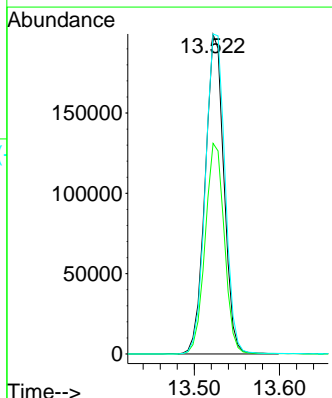
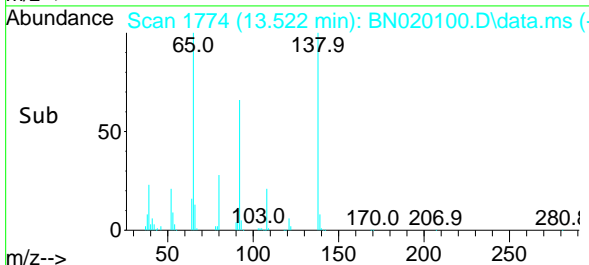
Reviewed By :Jagrut Upadhyay 06/13/2022
 Supervised By :mohammad ahmed 06/14/2022

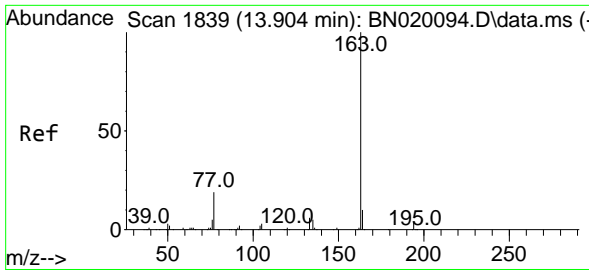


#45
 2-Nitroaniline
 Concen: 38.689 ng/uI
 RT: 13.522 min Scan# 1774
 Delta R.T. -0.006 min
 Lab File: BN020100.D
 Acq: 10 Jun 2022 14:54



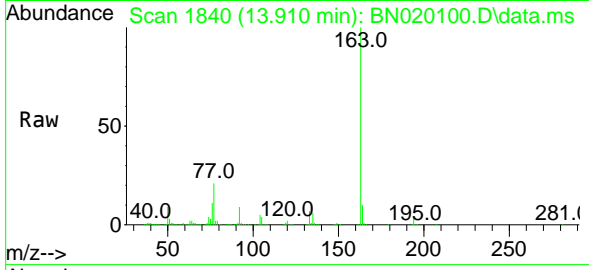
Tgt Ion: 65 Resp: 304901
 Ion Ratio Lower Upper
 65 100
 92 65.9 54.1 81.1
 138 100.2 77.0 115.4





#47
 Dimethylphthalate
 Concen: 35.542 ng/ul
 RT: 13.910 min Scan# 1840
 Delta R.T. 0.000 min
 Lab File: BN020100.D
 Acq: 10 Jun 2022 14:54

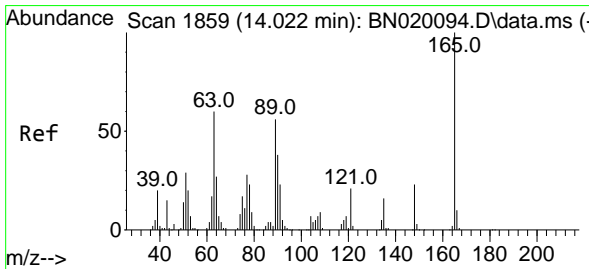
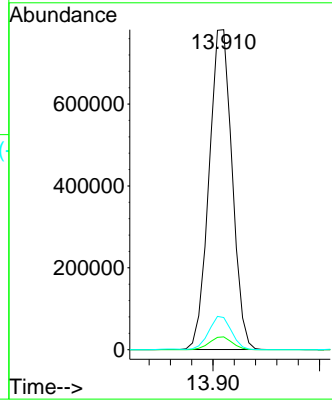
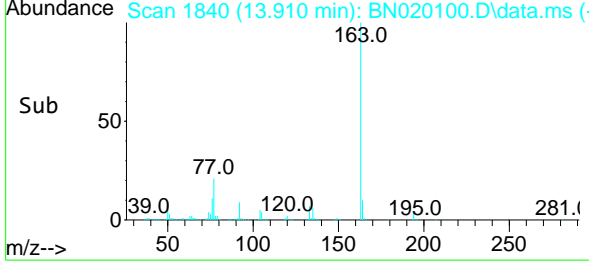
Instrument : BNA_N
 ClientSampleId : EXYW2MSDMSD



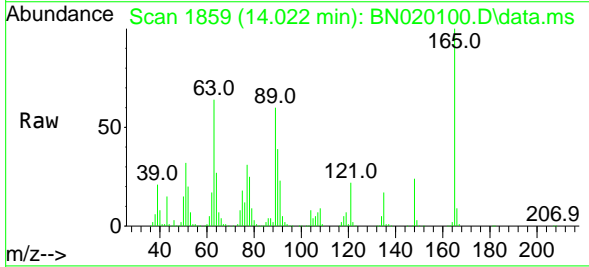
Tgt Ion:163 Resp: 1173979
 Ion Ratio Lower Upper
 163 100
 194 4.0 3.4 5.0
 164 10.0 7.7 11.5

Manual Integrations
 APPROVED

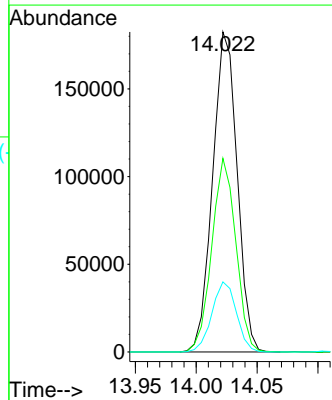
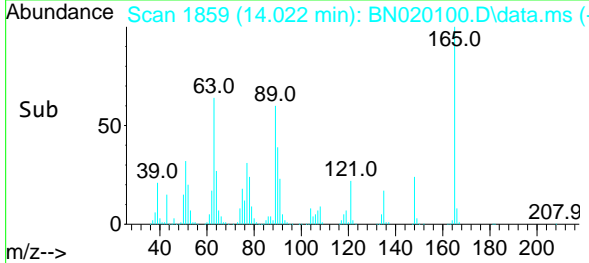
Reviewed By :Jagrut Upadhyay 06/13/2022
 Supervised By :mohammad ahmed 06/14/2022

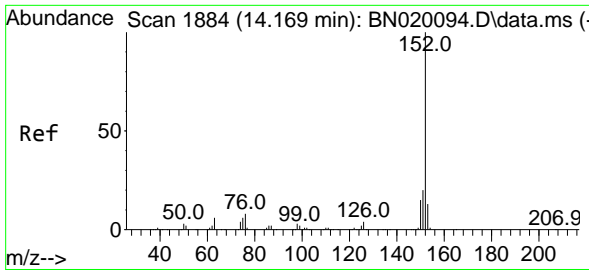


#48
 2,6-Dinitrotoluene
 Concen: 39.536 ng/ul
 RT: 14.022 min Scan# 1859
 Delta R.T. -0.006 min
 Lab File: BN020100.D
 Acq: 10 Jun 2022 14:54



Tgt Ion:165 Resp: 255329
 Ion Ratio Lower Upper
 165 100
 89 60.5 50.6 75.8
 121 21.9 17.9 26.9





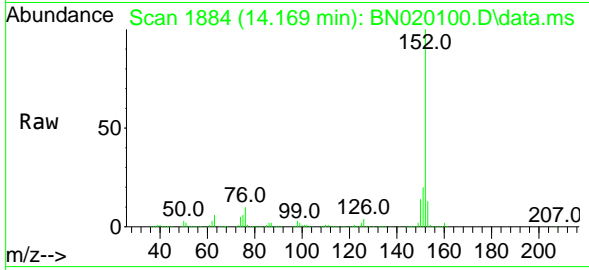
#50
 Acenaphthylene
 Concen: 33.757 ng/u1
 RT: 14.169 min Scan# 1884
 Delta R.T. 0.000 min
 Lab File: BN020100.D
 Acq: 10 Jun 2022 14:54

Instrument :

BNA_N

ClientSampleId :

EXYW2MSDMSD

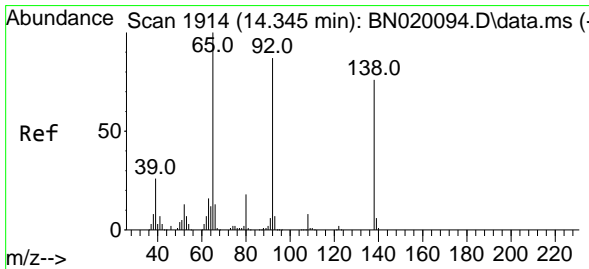
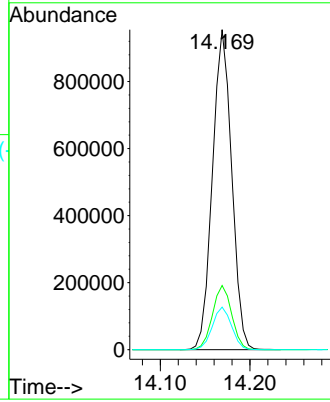
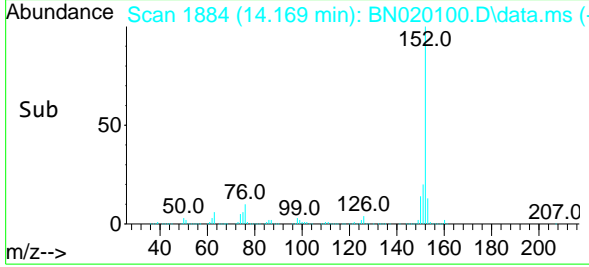


Tgt Ion:152 Resp: 142215
 Ion Ratio Lower Upper
 152 100
 151 20.0 16.0 24.0
 153 13.3 10.7 16.1

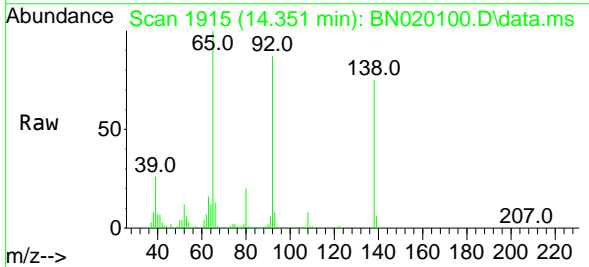
Manual Integrations

APPROVED

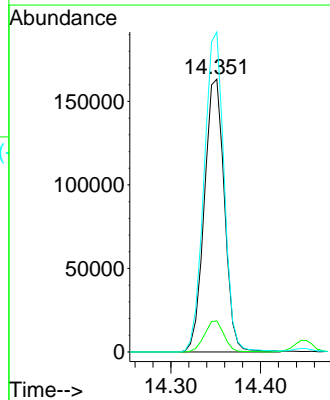
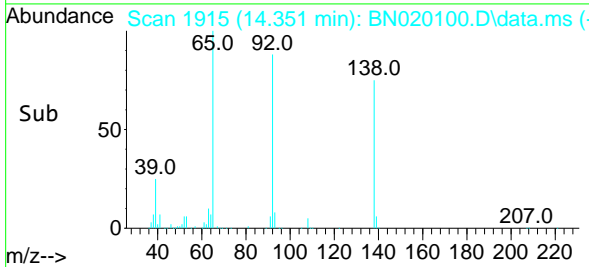
Reviewed By :Jagrut Upadhyay 06/13/2022
 Supervised By :mohammad ahmed 06/14/2022

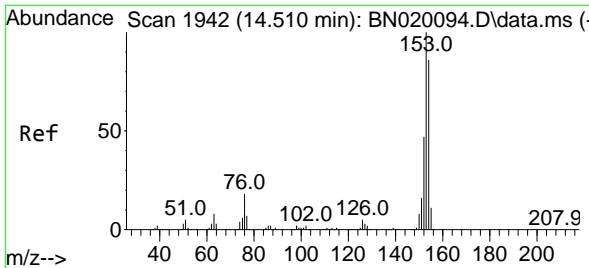


#51
 3-Nitroaniline
 Concen: 37.294 ng/u1
 RT: 14.351 min Scan# 1915
 Delta R.T. 0.000 min
 Lab File: BN020100.D
 Acq: 10 Jun 2022 14:54



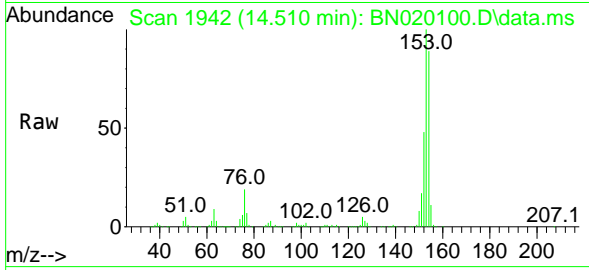
Tgt Ion:138 Resp: 254621
 Ion Ratio Lower Upper
 138 100
 108 11.4 8.6 12.8
 92 117.3 92.9 139.3





#52
 Acenaphthene
 Concen: 33.915 ng/uI
 RT: 14.510 min Scan# 1942
 Delta R.T. -0.006 min
 Lab File: BN020100.D
 Acq: 10 Jun 2022 14:54

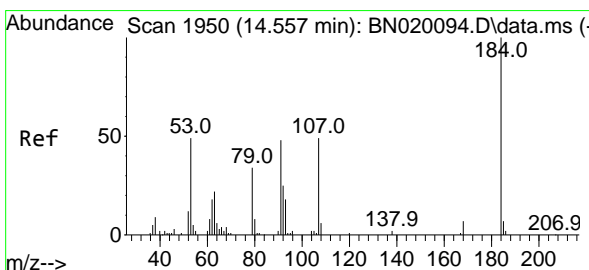
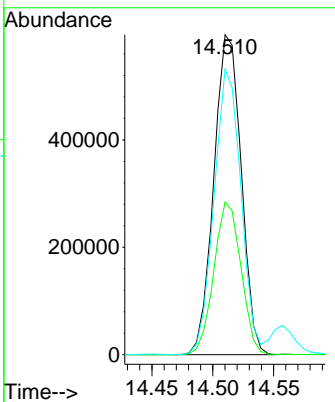
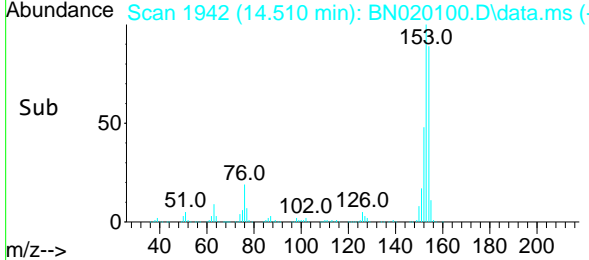
Instrument :
 BNA_N
ClientSampleId :
 EXYW2MSDMSD



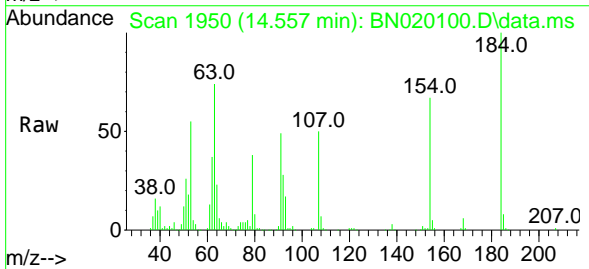
Tgt Ion:153 Resp: 93328
 Ion Ratio Lower Upper
 153 100
 152 47.8 38.4 57.6
 154 89.3 69.7 104.5

Manual Integrations
APPROVED

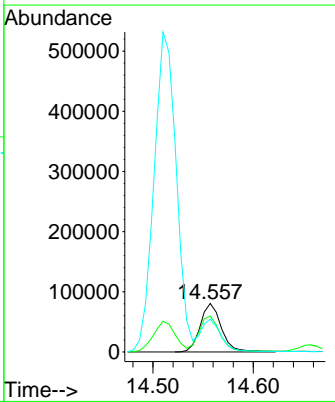
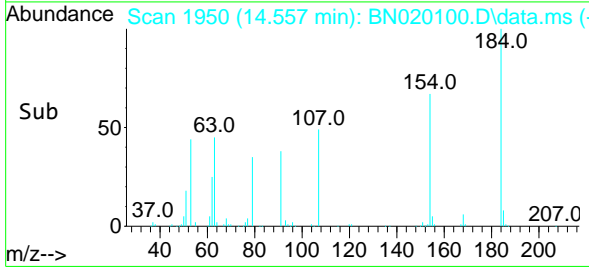
Reviewed By :Jagrut Upadhyay 06/13/2022
 Supervised By :mohammad ahmed 06/14/2022

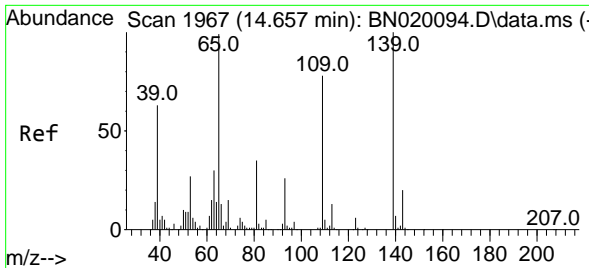


#53
 2,4-Dinitrophenol
 Concen: 28.601 ng/uI
 RT: 14.557 min Scan# 1950
 Delta R.T. 0.000 min
 Lab File: BN020100.D
 Acq: 10 Jun 2022 14:54



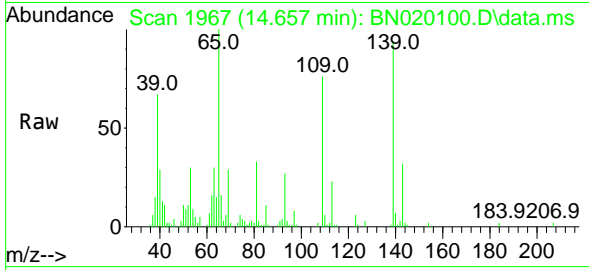
Tgt Ion:184 Resp: 118260
 Ion Ratio Lower Upper
 184 100
 63 74.0 55.9 83.9
 154 67.5 53.1 79.7





#55
 4-Nitrophenol
 Concen: 8.089 ng/u1
 RT: 14.657 min Scan# 1967
 Delta R.T. 0.000 min
 Lab File: BN020100.D
 Acq: 10 Jun 2022 14:54

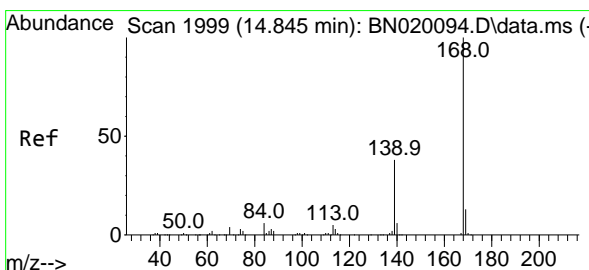
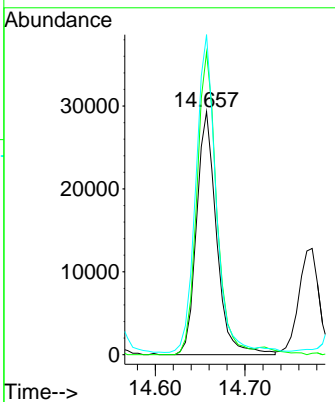
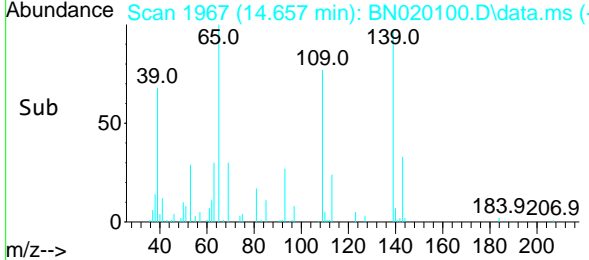
Instrument : BNA_N
 ClientSampleId : EXYW2MSDMSD



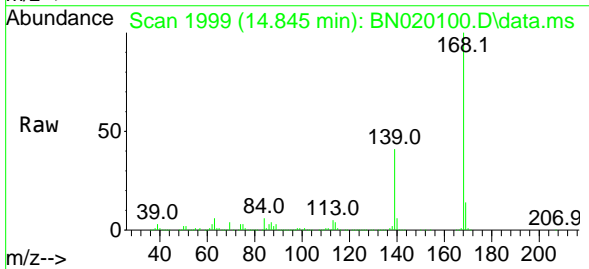
Tgt Ion:109 Resp: 45400
 Ion Ratio Lower Upper
 109 100
 139 124.4 100.1 150.1
 65 131.6 104.6 157.0

Manual Integrations
APPROVED

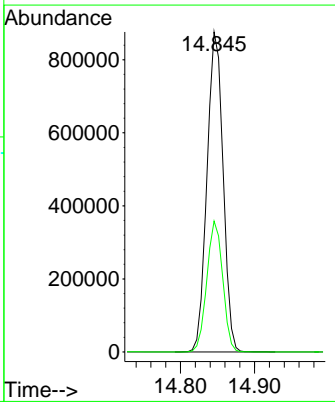
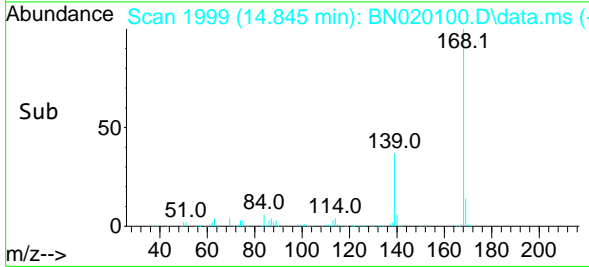
Reviewed By :Jagrut Upadhyay 06/13/2022
 Supervised By :mohammad ahmed 06/14/2022

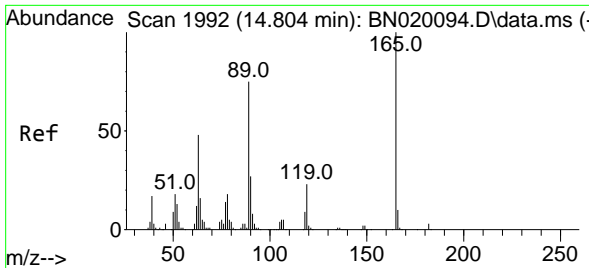


#56
 Dibenzofuran
 Concen: 34.071 ng/u1
 RT: 14.845 min Scan# 1999
 Delta R.T. -0.006 min
 Lab File: BN020100.D
 Acq: 10 Jun 2022 14:54



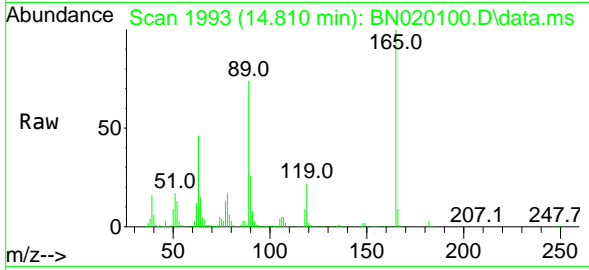
Tgt Ion:168 Resp: 1320873
 Ion Ratio Lower Upper
 168 100
 139 40.9 31.1 46.7





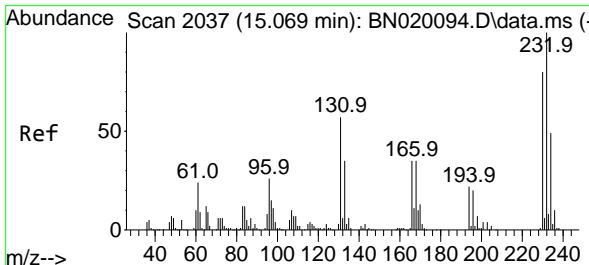
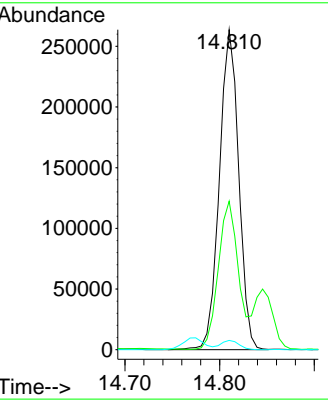
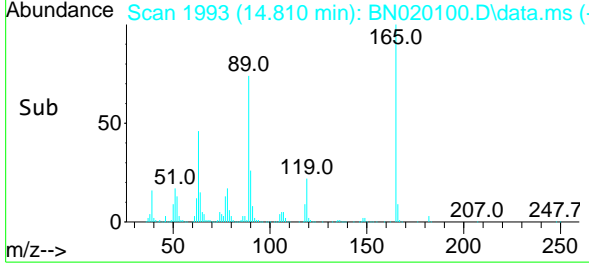
#57
 2,4-Dinitrotoluene
 Concen: 39.122 ng/uI
 RT: 14.810 min Scan# 1993
 Delta R.T. 0.000 min
 Lab File: BN020100.D
 Acq: 10 Jun 2022 14:54

Instrument :
 BNA_N
ClientSampleId :
 EXYW2MSDMSD

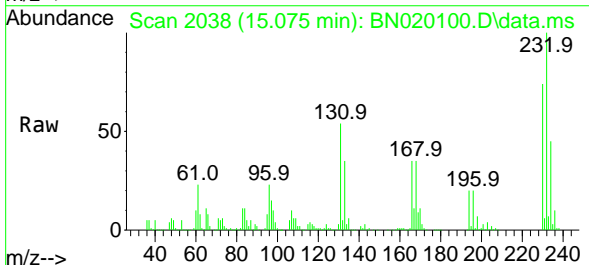


Tgt Ion:165 Resp: 37409
 Ion Ratio Lower Upper
 165 100
 63 46.4 36.3 54.5
 182 2.9 2.3 3.5

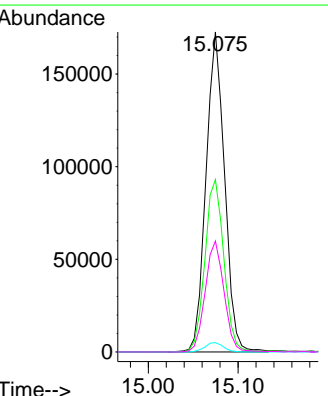
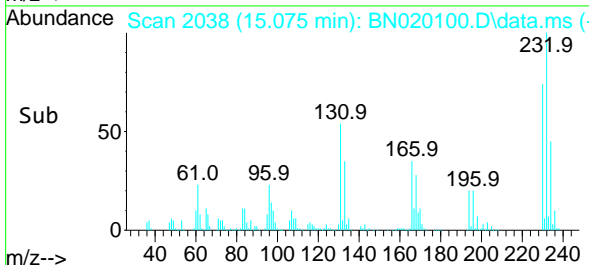
Manual Integrations
APPROVED
 Reviewed By :Jagrut Upadhyay 06/13/2022
 Supervised By :mohammad ahmed 06/14/2022

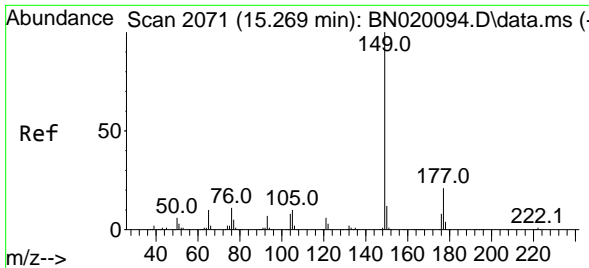


#58
 2,3,4,6-Tetrachlorophenol
 Concen: 36.007 ng/uI
 RT: 15.075 min Scan# 2038
 Delta R.T. 0.000 min
 Lab File: BN020100.D
 Acq: 10 Jun 2022 14:54



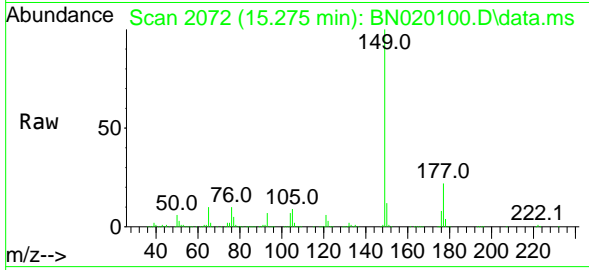
Tgt Ion:232 Resp: 248252
 Ion Ratio Lower Upper
 232 100
 131 53.9 38.5 57.7
 130 2.9 2.2 3.2
 166 34.6 25.8 38.8





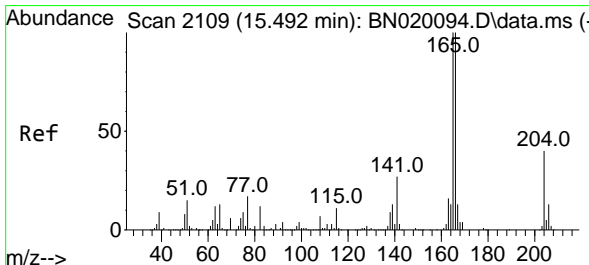
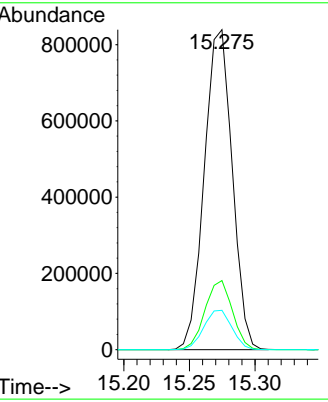
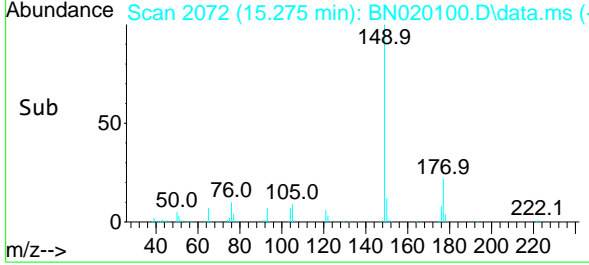
#59
 Diethylphthalate
 Concen: 36.523 ng/u1
 RT: 15.275 min Scan# 2072
 Delta R.T. 0.000 min
 Lab File: BN020100.D
 Acq: 10 Jun 2022 14:54

Instrument : BNA_N
 ClientSampleId : EXYW2MSDMSD

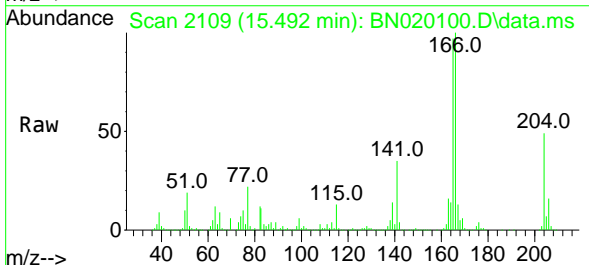


Tgt Ion:149 Resp: 1242034
 Ion Ratio Lower Upper
 149 100
 177 21.6 17.8 26.8
 150 12.3 10.5 15.7

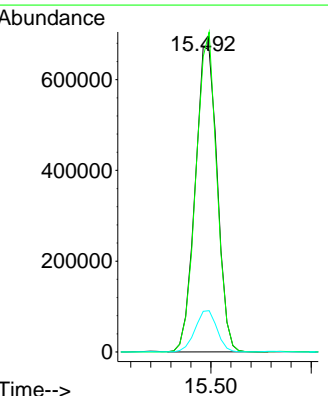
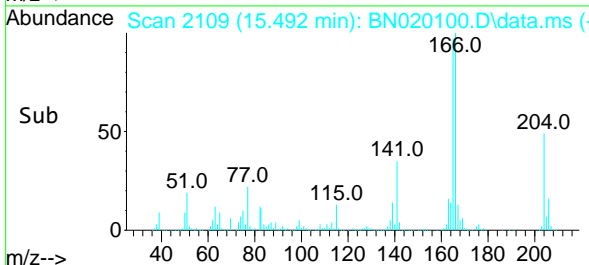
Manual Integrations
APPROVED
 Reviewed By :Jagrut Upadhyay 06/13/2022
 Supervised By :mohammad ahmed 06/14/2022

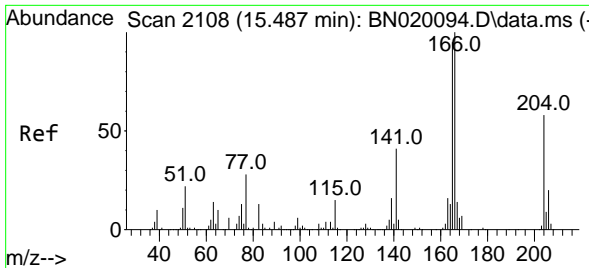


#61
 Fluorene
 Concen: 34.092 ng/u1
 RT: 15.492 min Scan# 2109
 Delta R.T. -0.006 min
 Lab File: BN020100.D
 Acq: 10 Jun 2022 14:54



Tgt Ion:166 Resp: 1028467
 Ion Ratio Lower Upper
 166 100
 165 96.7 77.7 116.5
 167 13.3 11.1 16.7





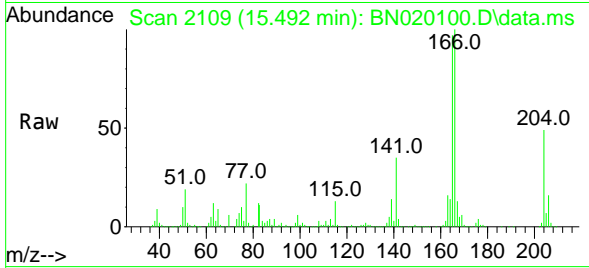
#62
 4-Chlorophenyl-phenylether
 Concen: 34.501 ng/ul
 RT: 15.492 min Scan# 2109
 Delta R.T. 0.000 min
 Lab File: BN020100.D
 Acq: 10 Jun 2022 14:54

Instrument :

BNA_N

ClientSampleId :

EXYW2MSDMSD

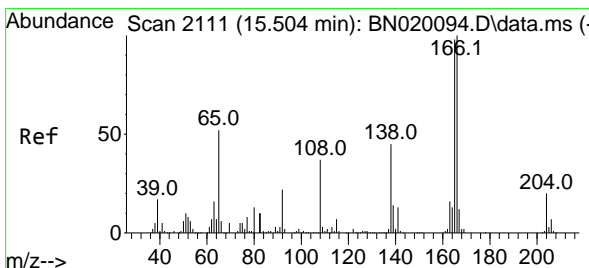
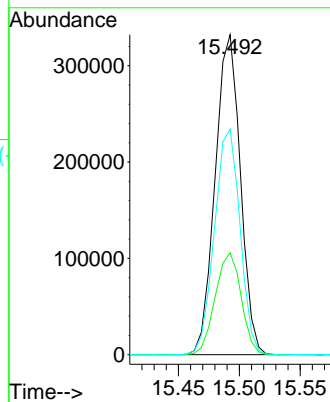
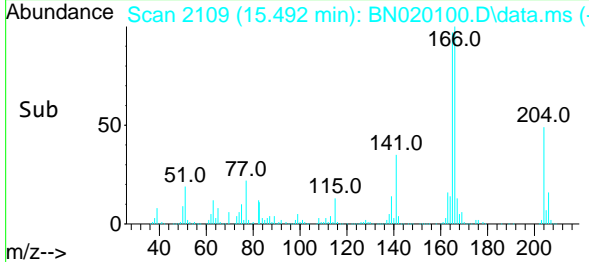


Tgt Ion:204 Resp: 479310
 Ion Ratio Lower Upper
 204 100
 206 31.9 26.7 40.1
 141 70.6 50.2 75.2

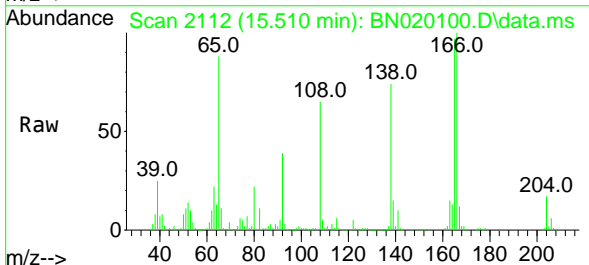
Manual Integrations

APPROVED

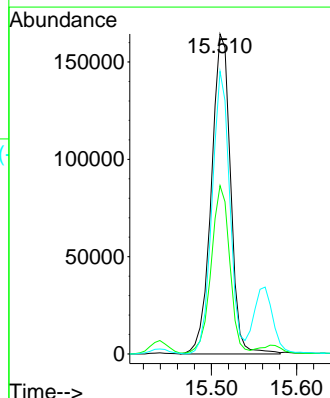
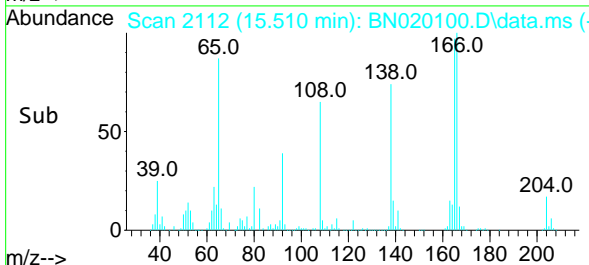
Reviewed By :Jagrut Upadhyay 06/13/2022
 Supervised By :mohammad ahmed 06/14/2022

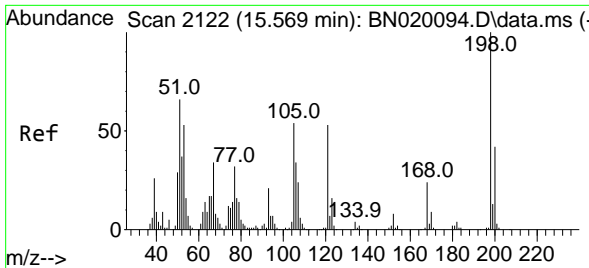


#63
 4-Nitroaniline
 Concen: 40.541 ng/ul
 RT: 15.510 min Scan# 2112
 Delta R.T. 0.000 min
 Lab File: BN020100.D
 Acq: 10 Jun 2022 14:54



Tgt Ion:138 Resp: 258644
 Ion Ratio Lower Upper
 138 100
 92 52.6 41.0 61.6
 108 88.3 65.3 97.9





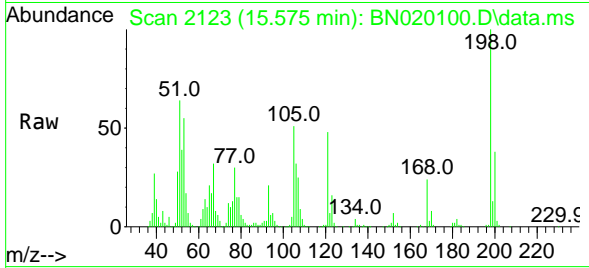
#66
 4,6-Dinitro-2-methylphenol
 Concen: 34.889 ng/ul
 RT: 15.575 min Scan# 2122
 Delta R.T. 0.000 min
 Lab File: BN020100.D
 Acq: 10 Jun 2022 14:54

Instrument :

BNA_N

ClientSampleId :

EXYW2MSDMSD

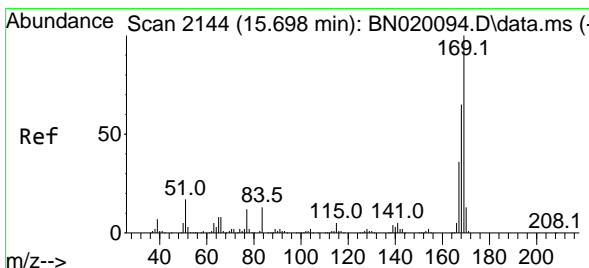
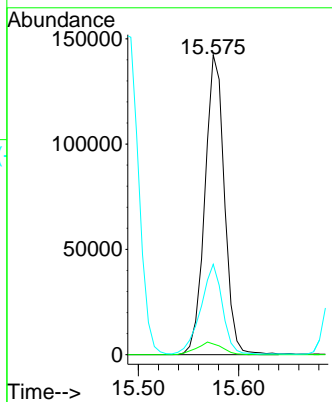
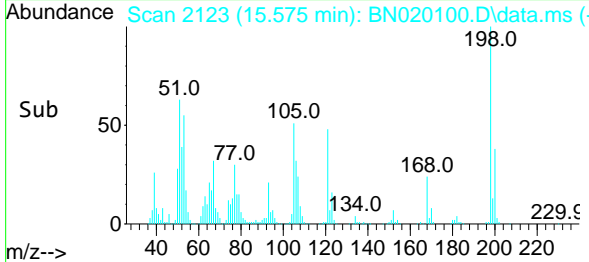


Tgt Ion:198 Resp: 19318
 Ion Ratio Lower Upper
 198 100
 182 3.6 3.0 4.4
 77 30.2 20.1 30.1

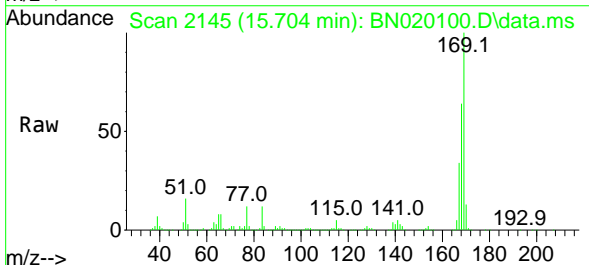
Manual Integrations

APPROVED

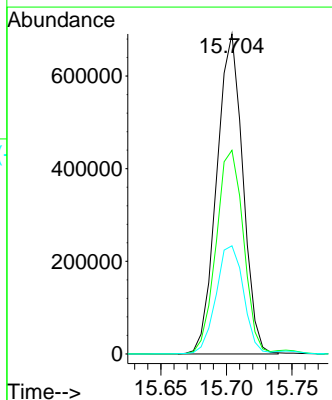
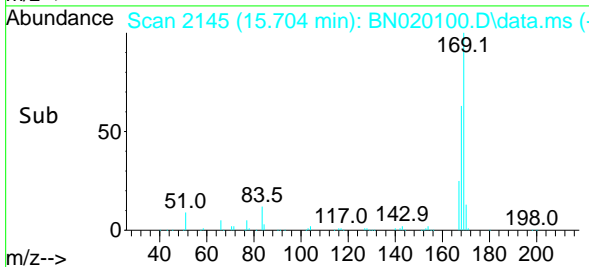
Reviewed By :Jagrut Upadhyay 06/13/2022
 Supervised By :mohammad ahmed 06/14/2022

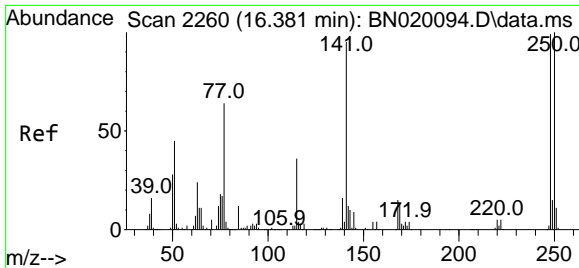


#67
 N-Nitrosodiphenylamine
 Concen: 35.425 ng/ul
 RT: 15.704 min Scan# 2145
 Delta R.T. 0.000 min
 Lab File: BN020100.D
 Acq: 10 Jun 2022 14:54



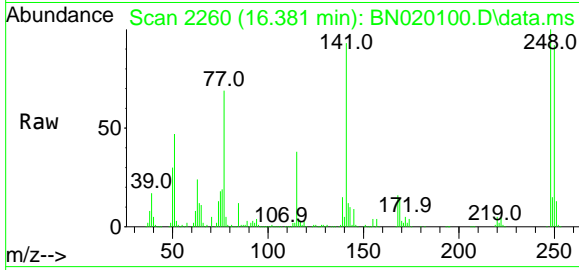
Tgt Ion:169 Resp: 957479
 Ion Ratio Lower Upper
 169 100
 168 63.7 52.4 78.6
 167 33.8 27.5 41.3





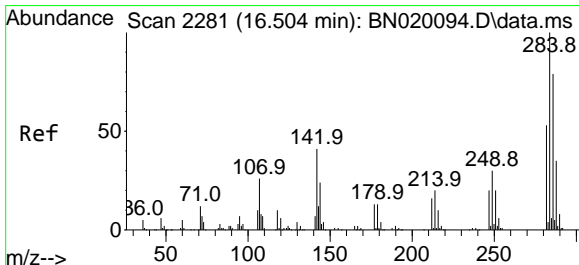
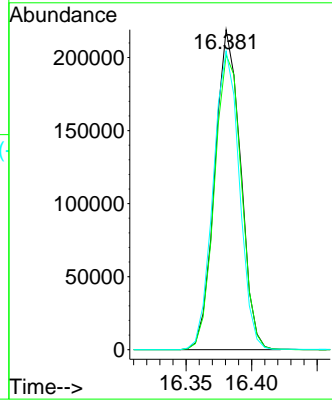
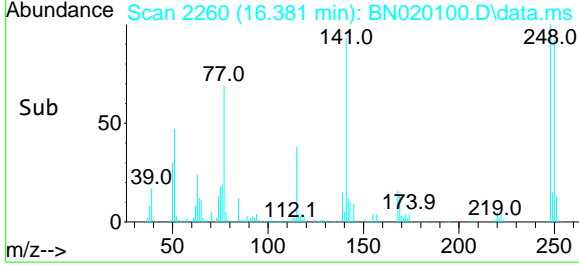
#68
 4-Bromophenyl-phenylether
 Concen: 36.517 ng/ul
 RT: 16.381 min Scan# 2260
 Delta R.T. -0.006 min
 Lab File: BN020100.D
 Acq: 10 Jun 2022 14:54

Instrument : BNA_N
 ClientSampleId : EXYW2MSDMSD

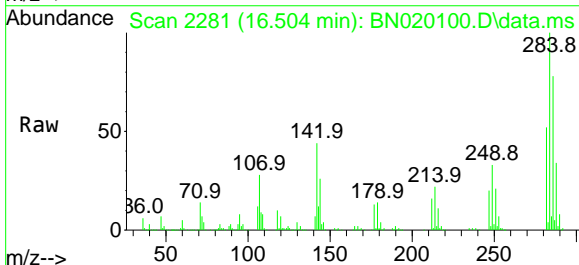


Tgt Ion:248 Resp: 29982
 Ion Ratio Lower Upper
 248 100
 250 92.2 77.8 116.8
 141 93.3 62.6 93.8

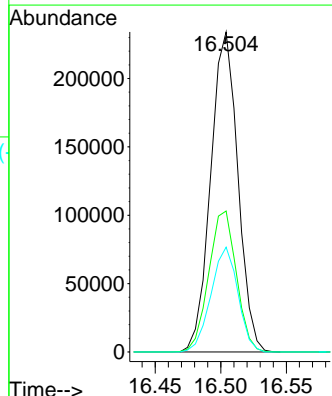
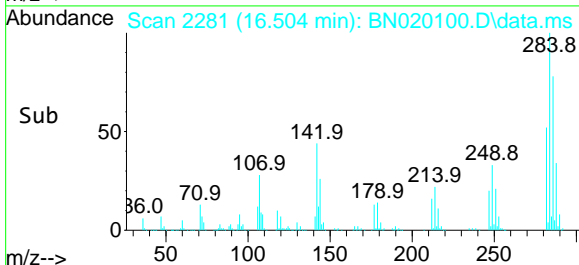
Manual Integrations
APPROVED
 Reviewed By :Jagrut Upadhyay 06/13/2022
 Supervised By :mohammad ahmed 06/14/2022

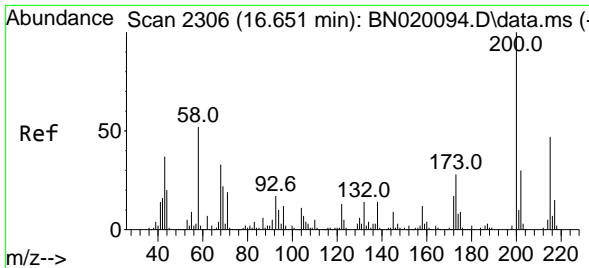


#69
 Hexachlorobenzene
 Concen: 35.752 ng/ul
 RT: 16.504 min Scan# 2281
 Delta R.T. 0.000 min
 Lab File: BN020100.D
 Acq: 10 Jun 2022 14:54



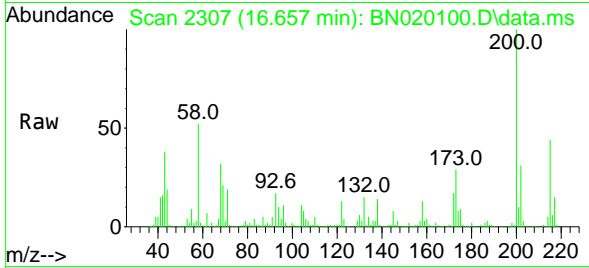
Tgt Ion:284 Resp: 337420
 Ion Ratio Lower Upper
 284 100
 142 44.1 27.8 41.8#
 249 32.8 25.7 38.5





#70
 Atrazine
 Concen: 37.137 ng/uI
 RT: 16.657 min Scan# 21
 Delta R.T. 0.000 min
 Lab File: BN020100.D
 Acq: 10 Jun 2022 14:54

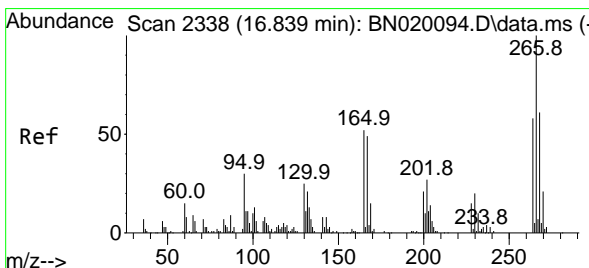
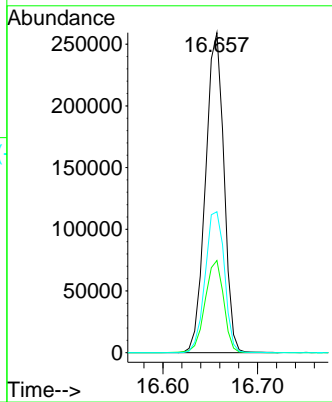
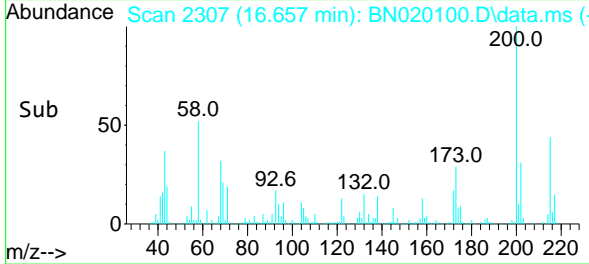
Instrument :
 BNA_N
 ClientSampleId :
 EXYW2MSDMSD



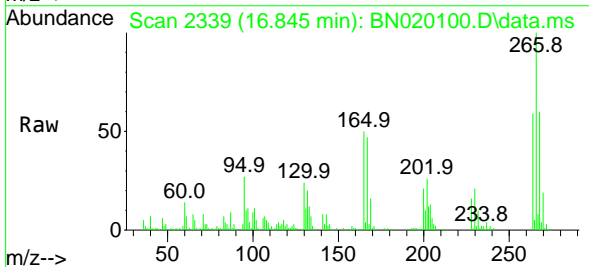
Tgt Ion:200 Resp: 350230
 Ion Ratio Lower Upper
 200 100
 173 28.8 20.5 30.7
 215 44.1 38.9 58.3

Manual Integrations
 APPROVED

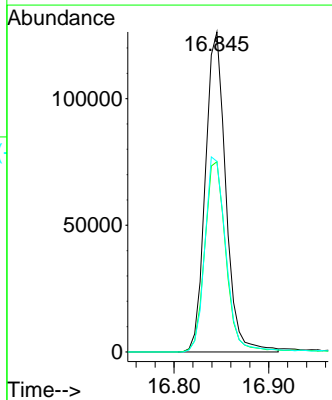
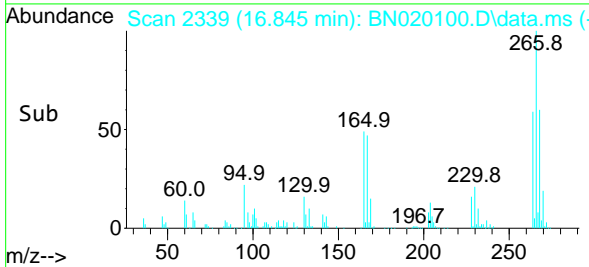
Reviewed By :Jagrut Upadhyay 06/13/2022
 Supervised By :mohammad ahmed 06/14/2022

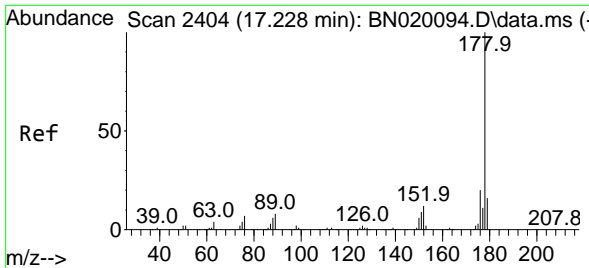


#71
 Pentachlorophenol
 Concen: 32.103 ng/uI
 RT: 16.845 min Scan# 2339
 Delta R.T. 0.000 min
 Lab File: BN020100.D
 Acq: 10 Jun 2022 14:54



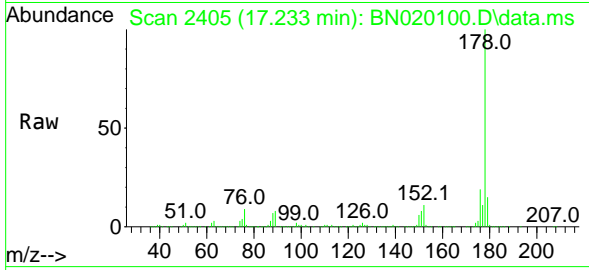
Tgt Ion:266 Resp: 188708
 Ion Ratio Lower Upper
 266 100
 264 59.4 50.2 75.2
 268 59.5 49.3 73.9





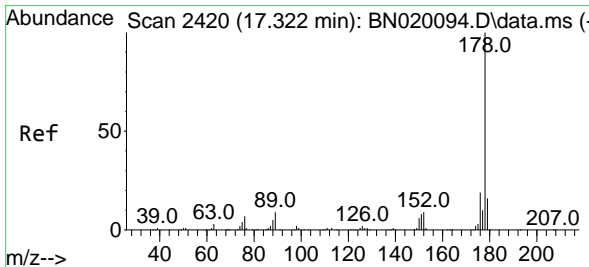
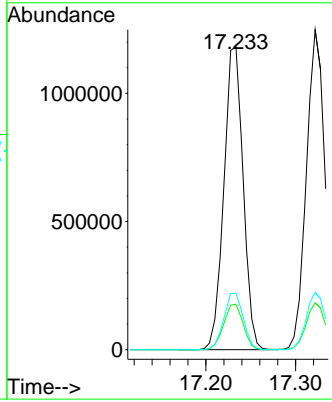
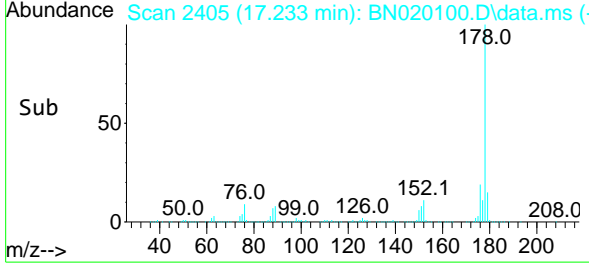
#72
 Phenanthrene
 Concen: 35.391 ng/u1
 RT: 17.233 min Scan# 2405
 Delta R.T. 0.000 min
 Lab File: BN020100.D
 Acq: 10 Jun 2022 14:54

Instrument :
 BNA_N
ClientSampleId :
 EXYW2MSDMSD

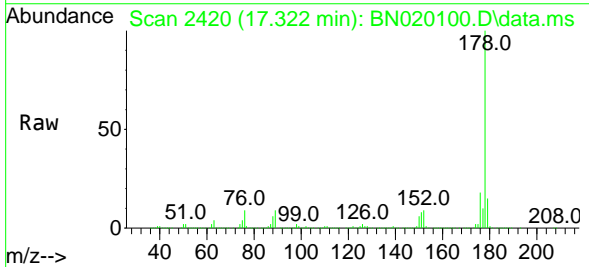


Tgt Ion:178 Resp: 176088
 Ion Ratio Lower Upper
 178 100
 179 15.0 12.2 18.4
 176 18.6 15.2 22.8

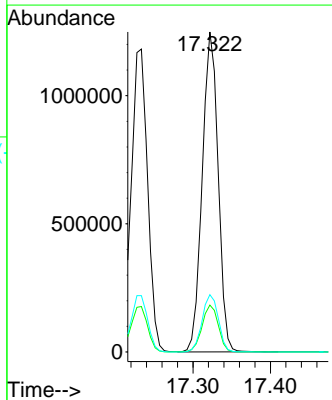
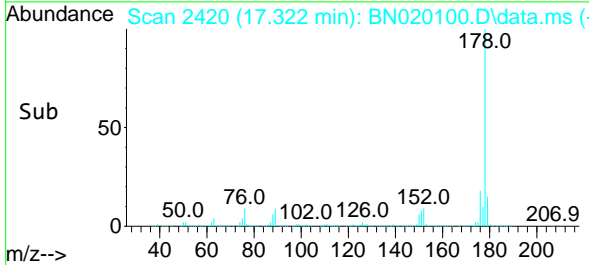
Manual Integrations
APPROVED
 Reviewed By :Jagrut Upadhyay 06/13/2022
 Supervised By :mohammad ahmed 06/14/2022

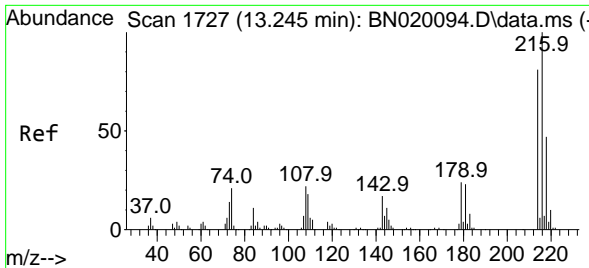


#74
 Anthracene
 Concen: 35.547 ng/u1
 RT: 17.322 min Scan# 2420
 Delta R.T. -0.006 min
 Lab File: BN020100.D
 Acq: 10 Jun 2022 14:54



Tgt Ion:178 Resp: 1778415
 Ion Ratio Lower Upper
 178 100
 179 14.7 13.0 19.4
 176 17.9 15.5 23.3





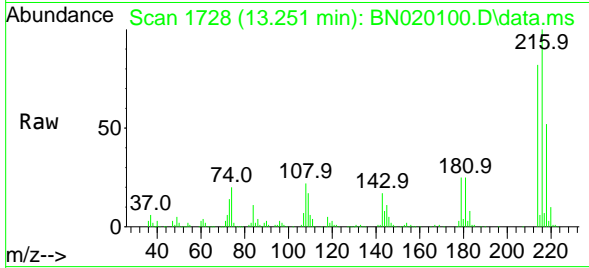
#75
 1,2,3,4-Tetrachlorobenzene
 Concen: 32.440 ng/uL
 RT: 13.251 min Scan# 1728
 Delta R.T. 0.000 min
 Lab File: BN020100.D
 Acq: 10 Jun 2022 14:54

Instrument :

BNA_N

ClientSampleId :

EXYW2MSDMSD

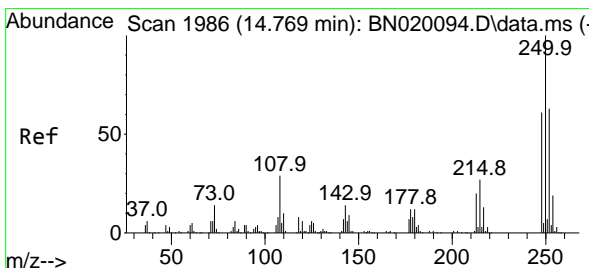
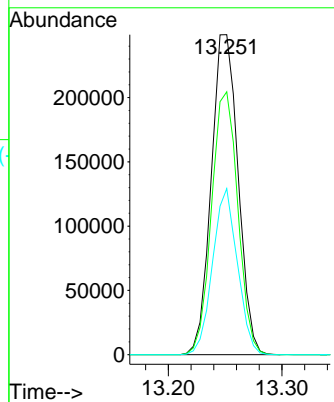
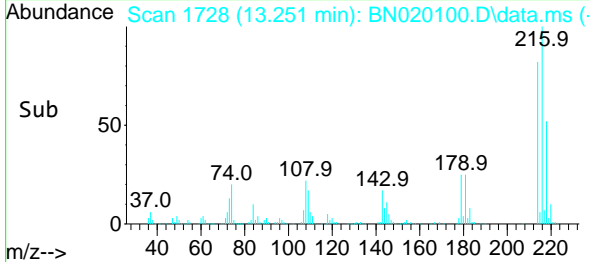


Tgt Ion:216 Resp: 40955
 Ion Ratio Lower Upper
 216 100
 214 82.1 63.2 94.8
 218 51.9 37.9 56.9

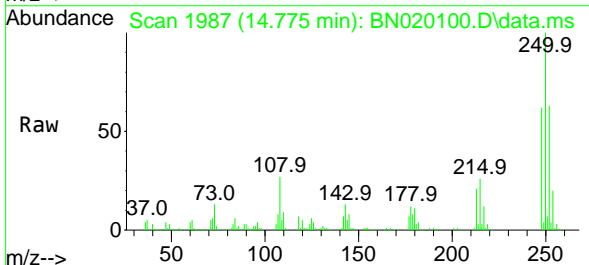
Manual Integrations

APPROVED

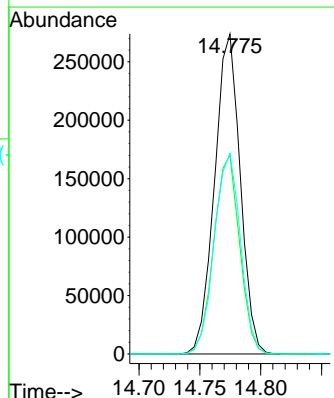
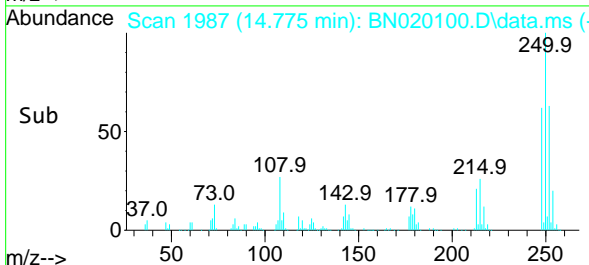
Reviewed By :Jagrut Upadhyay 06/13/2022
 Supervised By :mohammad ahmed 06/14/2022

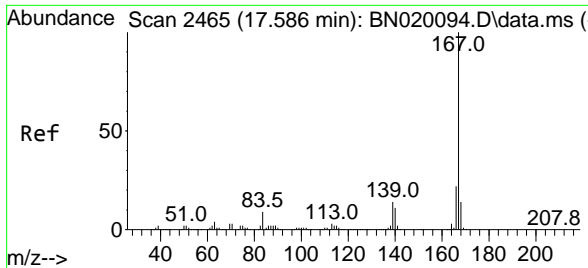


#76
 Pentachlorobenzene
 Concen: 36.037 ng/uL
 RT: 14.775 min Scan# 1987
 Delta R.T. 0.000 min
 Lab File: BN020100.D
 Acq: 10 Jun 2022 14:54



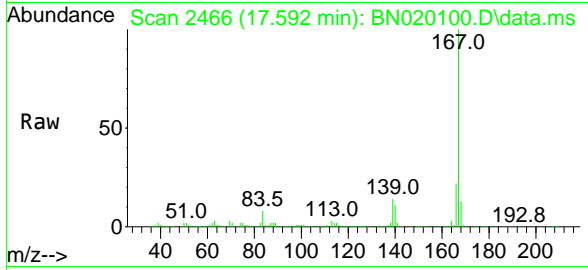
Tgt Ion:250 Resp: 402112
 Ion Ratio Lower Upper
 250 100
 248 62.2 53.0 79.4
 252 62.7 53.4 80.2





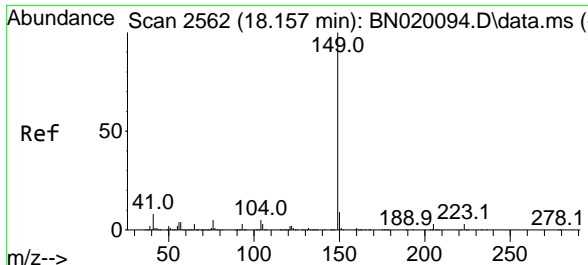
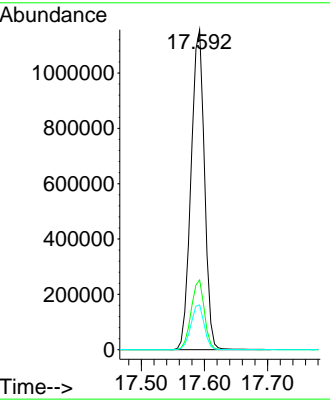
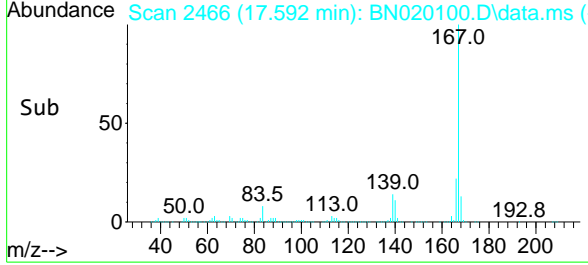
#77
 Carbazole
 Concen: 37.510 ng/uI
 RT: 17.592 min Scan# 2466
 Delta R.T. 0.000 min
 Lab File: BN020100.D
 Acq: 10 Jun 2022 14:54

Instrument :
 BNA_N
ClientSampleId :
 EXYW2MSDMSD

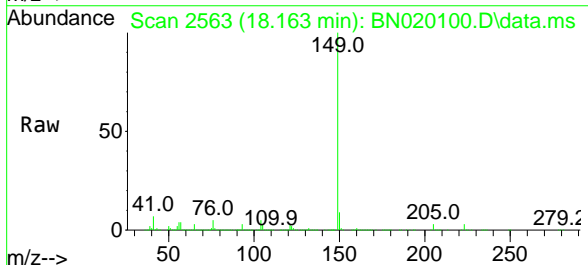


Tgt Ion:167 Resp: 170722
 Ion Ratio Lower Upper
 167 100
 166 21.8 16.1 24.1
 139 14.0 10.2 15.2

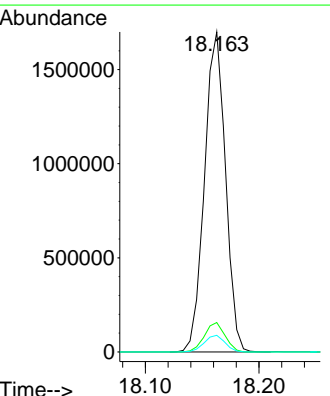
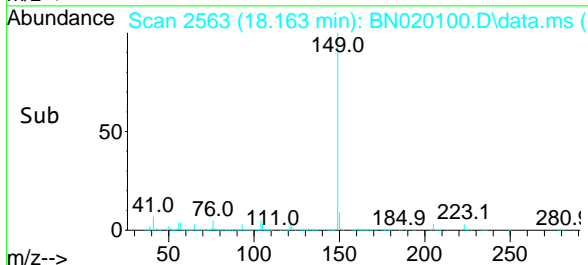
Manual Integrations
APPROVED
 Reviewed By :Jagrut Upadhyay 06/13/2022
 Supervised By :mohammad ahmed 06/14/2022

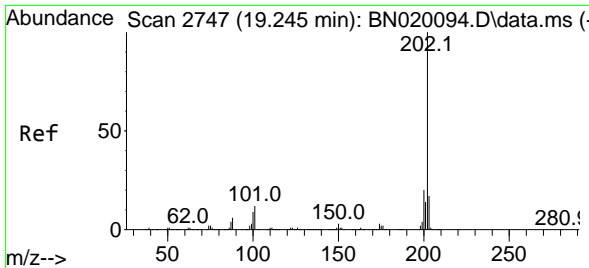


#78
 Di-n-butylphthalate
 Concen: 38.664 ng/uI
 RT: 18.163 min Scan# 2563
 Delta R.T. 0.000 min
 Lab File: BN020100.D
 Acq: 10 Jun 2022 14:54



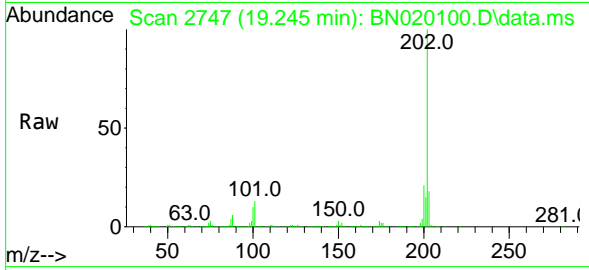
Tgt Ion:149 Resp: 2182132
 Ion Ratio Lower Upper
 149 100
 150 9.2 7.1 10.7
 104 5.2 4.1 6.1





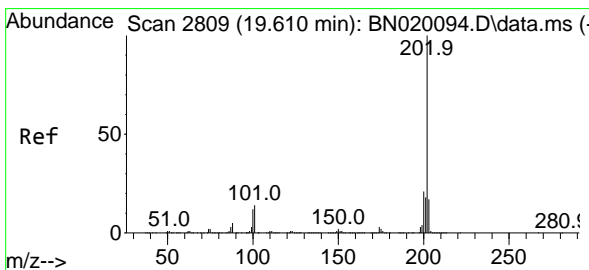
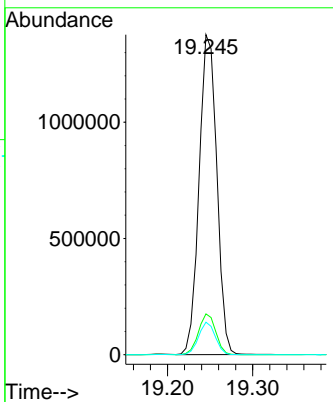
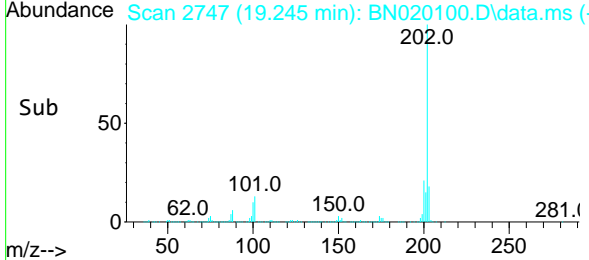
#80
 Fluoranthene
 Concen: 38.404 ng/u1
 RT: 19.245 min Scan# 2747
 Delta R.T. -0.006 min
 Lab File: BN020100.D
 Acq: 10 Jun 2022 14:54

Instrument : BNA_N
 ClientSampleId : EXYW2MSDMSD

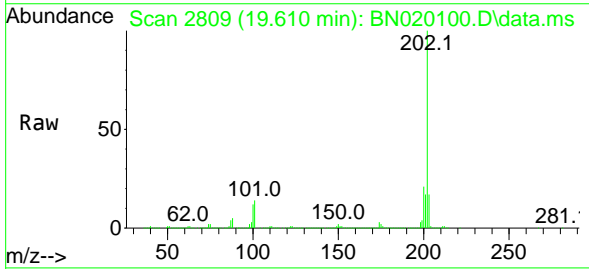


Tgt Ion:202 Resp: 198556
 Ion Ratio Lower Upper
 202 100
 101 12.8 8.9 13.3
 100 10.2 6.7 10.1

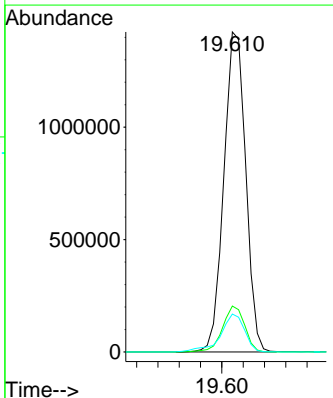
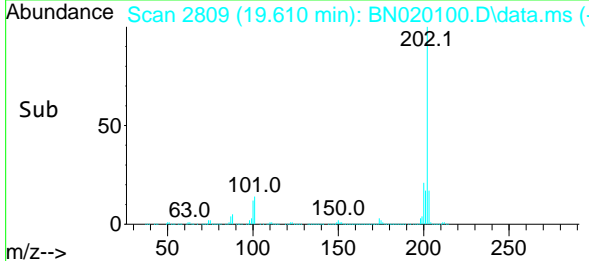
Manual Integrations
APPROVED
 Reviewed By :Jagrut Upadhyay 06/13/2022
 Supervised By :mohammad ahmed 06/14/2022

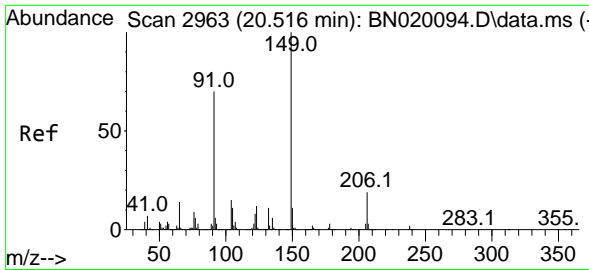


#82
 Pyrene
 Concen: 38.321 ng/u1
 RT: 19.610 min Scan# 2809
 Delta R.T. -0.006 min
 Lab File: BN020100.D
 Acq: 10 Jun 2022 14:54



Tgt Ion:202 Resp: 2032692
 Ion Ratio Lower Upper
 202 100
 101 14.4 9.7 14.5
 100 11.8 8.0 12.0





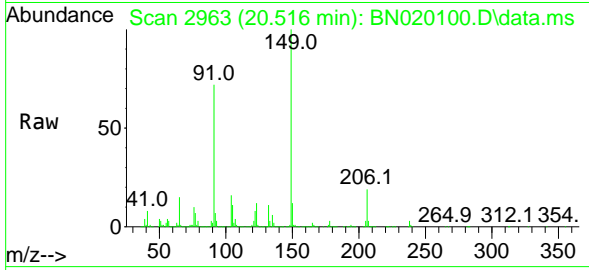
#83
 Butylbenzylphthalate
 Concen: 41.981 ng/ul
 RT: 20.516 min Scan# 2963
 Delta R.T. -0.006 min
 Lab File: BN020100.D
 Acq: 10 Jun 2022 14:54

Instrument :

BNA_N

ClientSampleId :

EXYW2MSDMSD

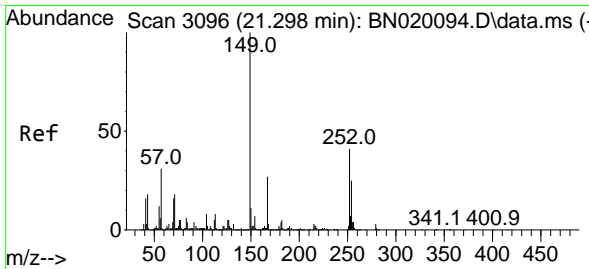
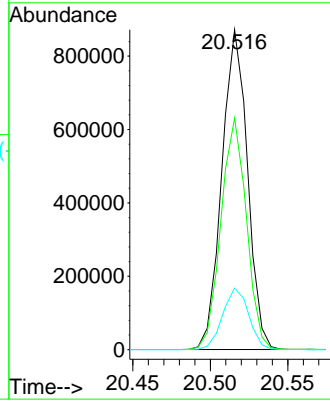
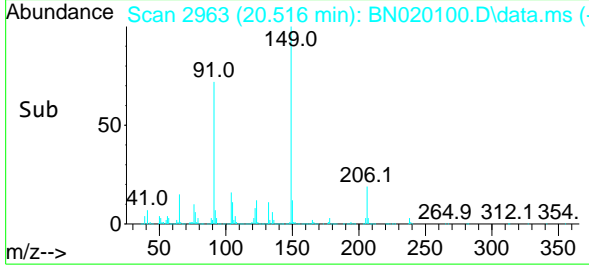


Tgt Ion:149 Resp: 1002170
 Ion Ratio Lower Upper
 149 100
 91 72.4 58.8 88.2
 206 19.3 18.1 27.1

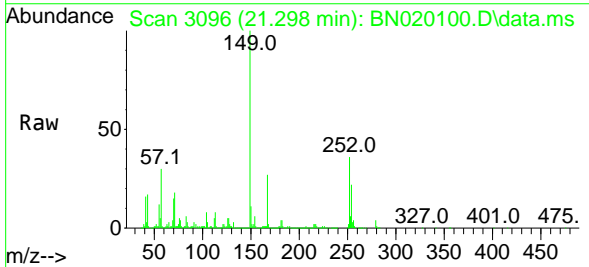
Manual Integrations

APPROVED

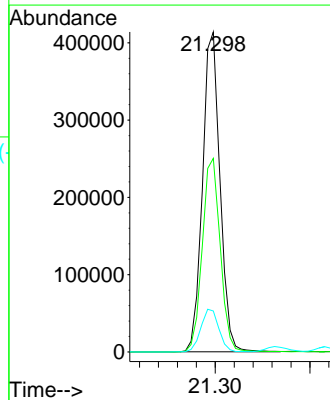
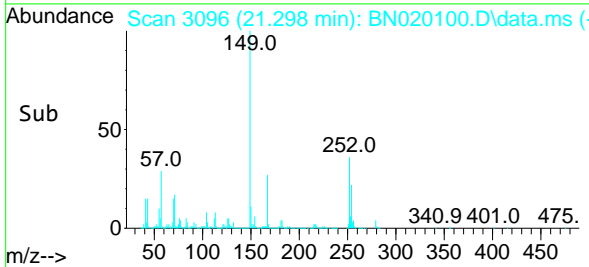
Reviewed By :Jagrut Upadhyay 06/13/2022
 Supervised By :mohammad ahmed 06/14/2022

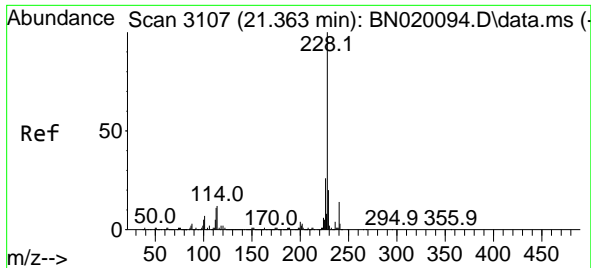


#84
 3,3'-Dichlorobenzidine
 Concen: 35.136 ng/ul
 RT: 21.298 min Scan# 3096
 Delta R.T. 0.000 min
 Lab File: BN020100.D
 Acq: 10 Jun 2022 14:54



Tgt Ion:252 Resp: 529925
 Ion Ratio Lower Upper
 252 100
 254 60.5 50.8 76.2
 126 12.8 8.2 12.4#





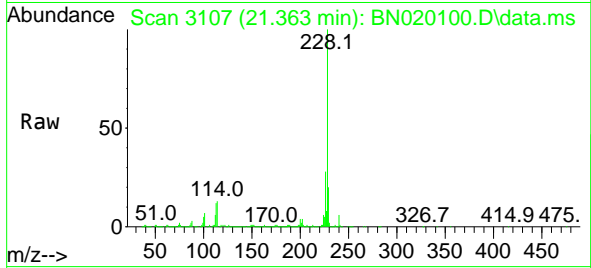
#85
 Benzo(a)anthracene
 Concen: 37.071 ng/uI
 RT: 21.363 min Scan# 3107
 Delta R.T. 0.000 min
 Lab File: BN020100.D
 Acq: 10 Jun 2022 14:54

Instrument :

BNA_N

ClientSampleId :

EXYW2MSDMSD

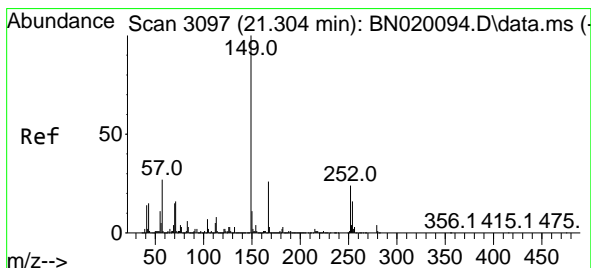
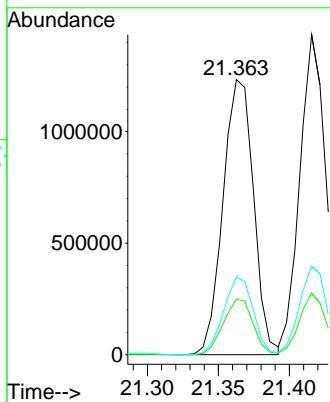
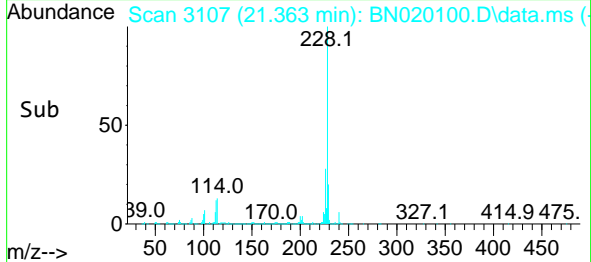


Tgt Ion:228 Resp: 1848510
 Ion Ratio Lower Upper
 228 100
 229 20.2 16.3 24.5
 226 28.3 23.2 34.8

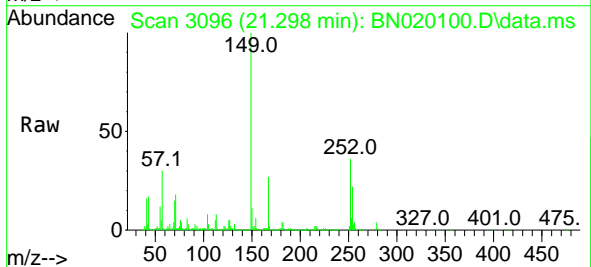
Manual Integrations

APPROVED

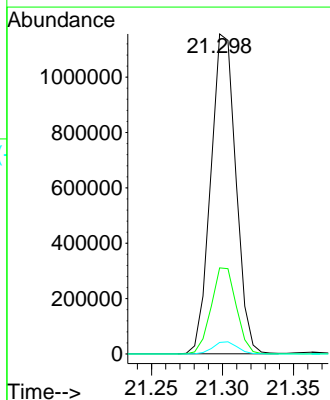
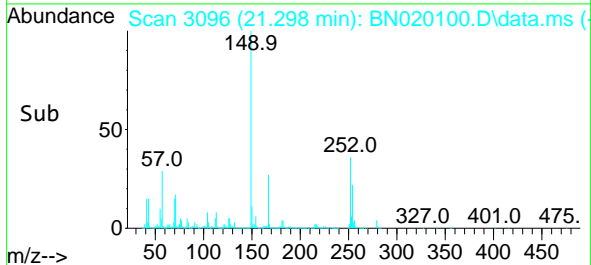
Reviewed By :Jagrut Upadhyay 06/13/2022
 Supervised By :mohammad ahmed 06/14/2022

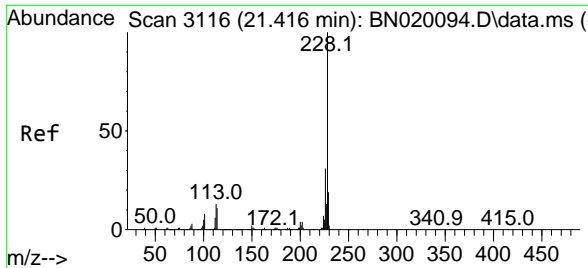


#86
 Bis(2-ethylhexyl)phthalate
 Concen: 42.209 ng/uI
 RT: 21.298 min Scan# 3096
 Delta R.T. -0.006 min
 Lab File: BN020100.D
 Acq: 10 Jun 2022 14:54



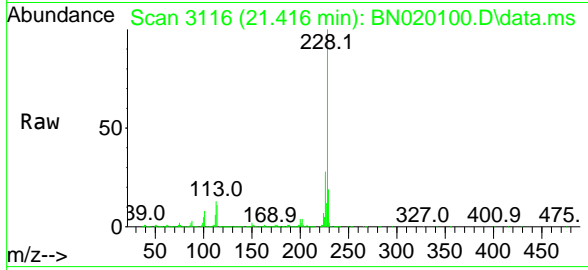
Tgt Ion:149 Resp: 1421661
 Ion Ratio Lower Upper
 149 100
 167 26.9 22.5 33.7
 279 3.6 3.5 5.3





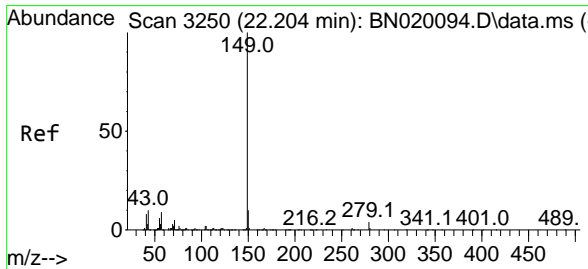
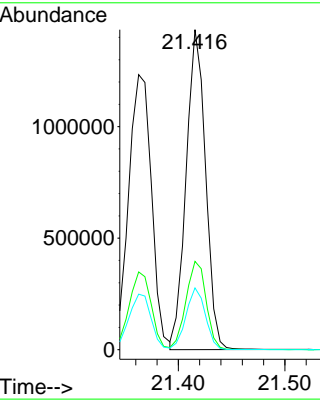
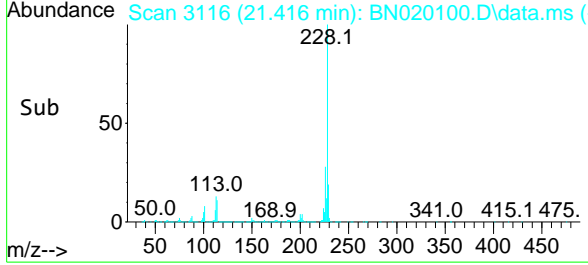
#87
 Chrysene
 Concen: 37.390 ng/u1
 RT: 21.416 min Scan# 3116
 Delta R.T. -0.006 min
 Lab File: BN020100.D
 Acq: 10 Jun 2022 14:54

Instrument : BNA_N
 ClientSampleId : EXYW2MSDMSD

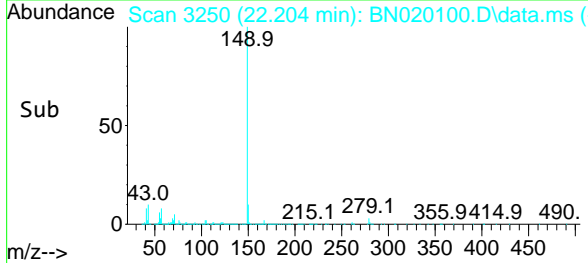
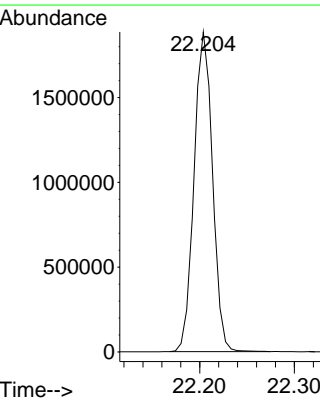
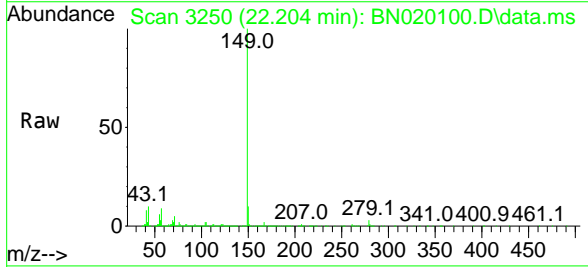


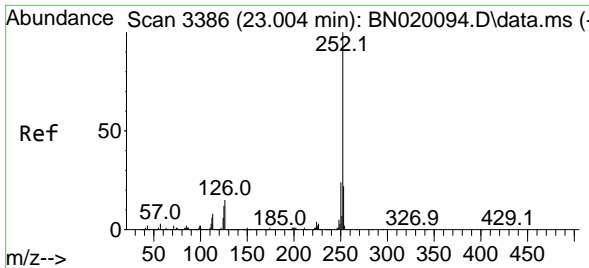
Tgt Ion:228 Resp: 182401
 Ion Ratio Lower Upper
 228 100
 226 27.6 24.2 36.2
 229 19.3 16.2 24.2

Manual Integrations
APPROVED
 Reviewed By :Jagrut Upadhyay 06/13/2022
 Supervised By :mohammad ahmed 06/14/2022



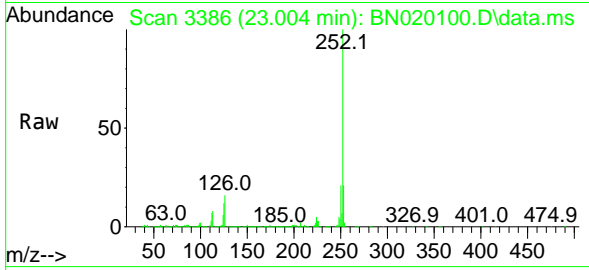
#89
 Di-n-octyl phthalate
 Concen: 42.463 ng/u1
 RT: 22.204 min Scan# 3250
 Delta R.T. -0.006 min
 Lab File: BN020100.D
 Acq: 10 Jun 2022 14:54
 Tgt Ion:149 Resp: 2556112





#90
 Benzo(b)fluoranthene
 Concen: 39.094 ng/u1
 RT: 23.004 min Scan# 3386
 Delta R.T. 0.000 min
 Lab File: BN020100.D
 Acq: 10 Jun 2022 14:54

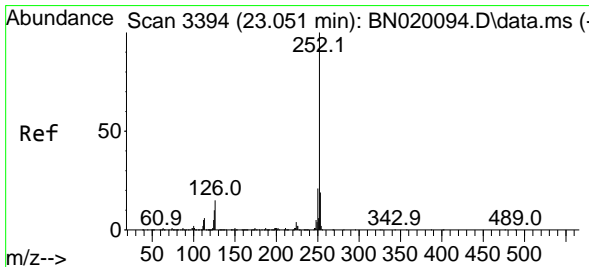
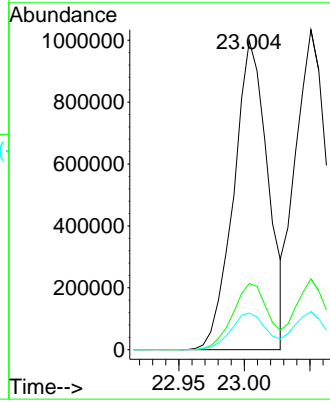
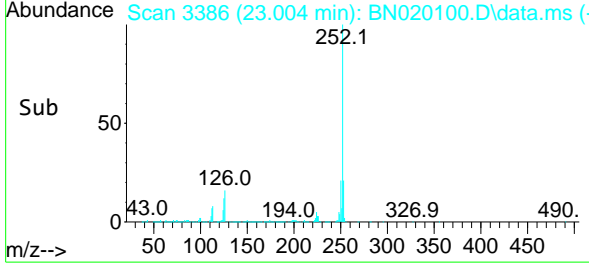
Instrument : BNA_N
 ClientSampleId : EXYW2MSDMSD



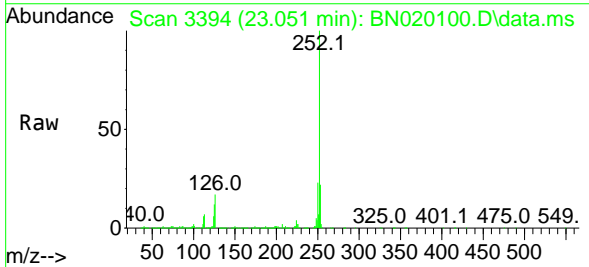
Tgt Ion:252 Resp: 1814679
 Ion Ratio Lower Upper
 252 100
 253 21.5 16.5 24.7
 125 11.9 7.8 11.8

Manual Integrations
 APPROVED

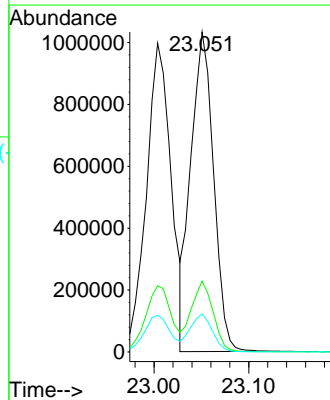
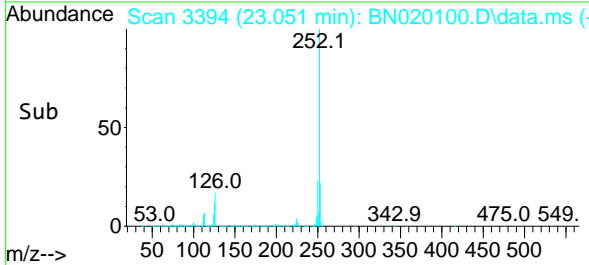
Reviewed By :Jagrut Upadhyay 06/13/2022
 Supervised By :mohammad ahmed 06/14/2022

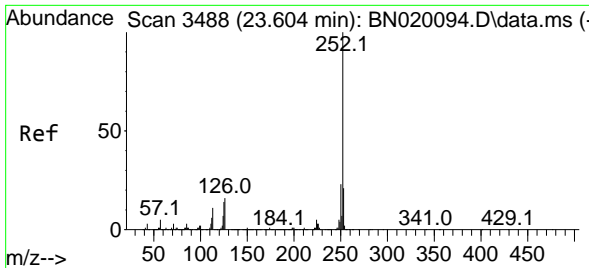


#91
 Benzo(k)fluoranthene
 Concen: 39.042 ng/u1
 RT: 23.051 min Scan# 3394
 Delta R.T. 0.000 min
 Lab File: BN020100.D
 Acq: 10 Jun 2022 14:54



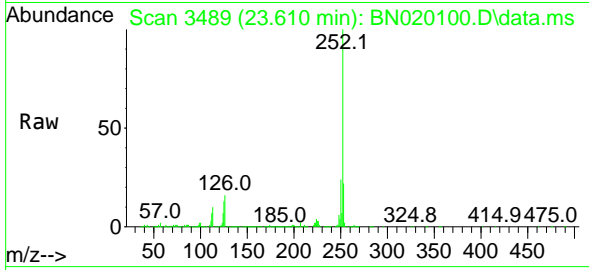
Tgt Ion:252 Resp: 1725152
 Ion Ratio Lower Upper
 252 100
 253 22.2 18.2 27.4
 125 11.9 8.2 12.4





#93
 Benzo(a)pyrene
 Concen: 36.863 ng/u1
 RT: 23.610 min Scan# 3489
 Delta R.T. 0.000 min
 Lab File: BN020100.D
 Acq: 10 Jun 2022 14:54

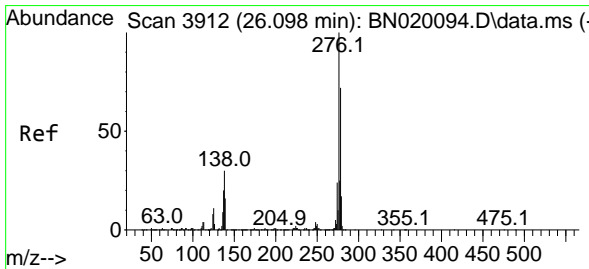
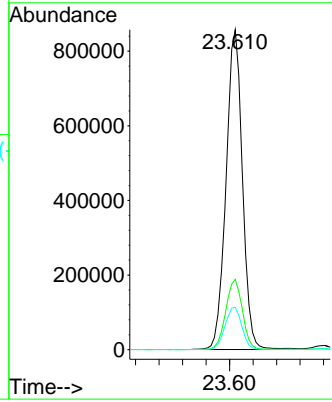
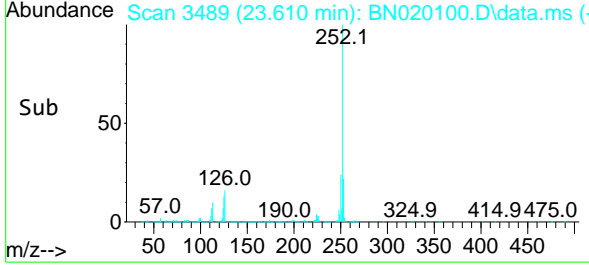
Instrument : BNA_N
 ClientSampleId : EXYW2MSDMSD



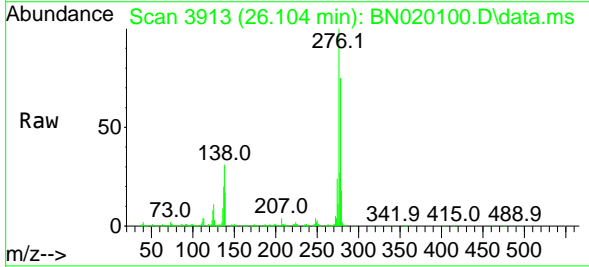
Tgt Ion:252 Resp: 165631
 Ion Ratio Lower Upper
 252 100
 253 22.0 18.7 28.1
 125 13.2 9.2 13.8

Manual Integrations
APPROVED

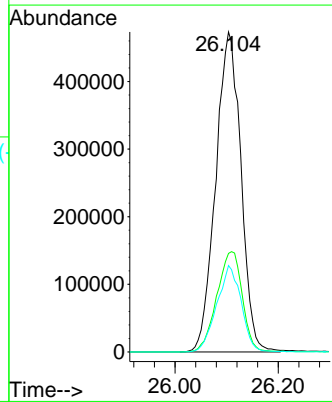
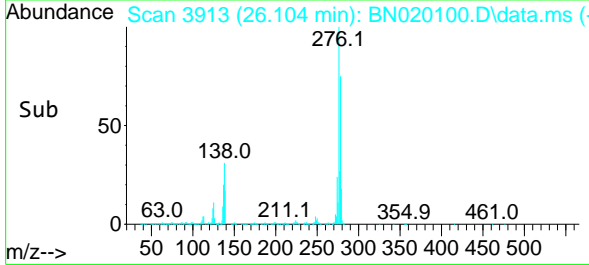
Reviewed By :Jagrut Upadhyay 06/13/2022
 Supervised By :mohammad ahmed 06/14/2022

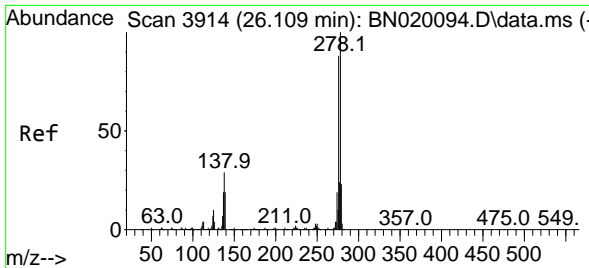


#94
 Indeno(1,2,3-cd)pyrene
 Concen: 34.655 ng/u1
 RT: 26.104 min Scan# 3913
 Delta R.T. 0.006 min
 Lab File: BN020100.D
 Acq: 10 Jun 2022 14:54



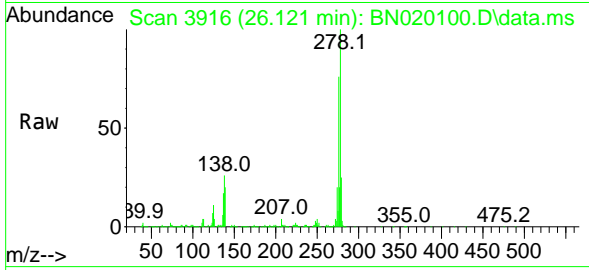
Tgt Ion:276 Resp: 1602040
 Ion Ratio Lower Upper
 276 100
 138 30.8 19.5 29.3#
 277 27.0 21.4 32.0





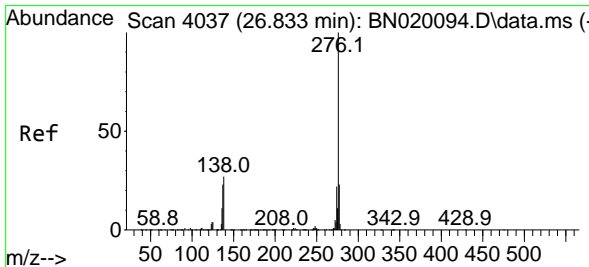
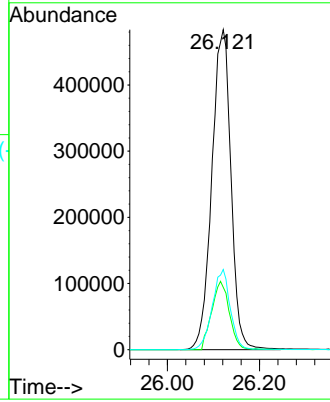
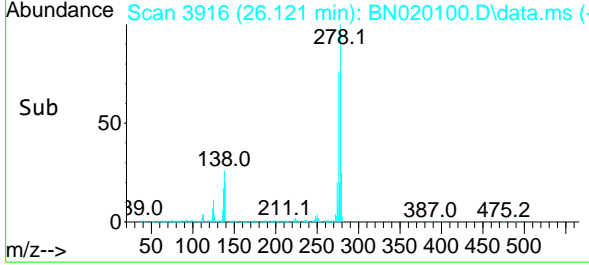
#95
 Dibenzo(a,h)anthracene
 Concen: 35.274 ng/ul
 RT: 26.121 min Scan# 3916
 Delta R.T. 0.000 min
 Lab File: BN020100.D
 Acq: 10 Jun 2022 14:54

Instrument : BNA_N
 Client Sample Id : EXYW2MSDMSD

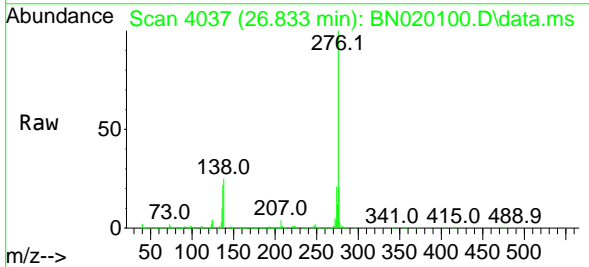


Tgt Ion: 278 Resp: 1392829
 Ion Ratio Lower Upper
 278 100
 139 19.5 13.8 20.8
 279 25.0 18.3 27.5

Manual Integrations
APPROVED
 Reviewed By :Jagrut Upadhyay 06/13/2022
 Supervised By :mohammad ahmed 06/14/2022



#96
 Benzo(g,h,i)perylene
 Concen: 35.187 ng/ul
 RT: 26.833 min Scan# 4037
 Delta R.T. -0.012 min
 Lab File: BN020100.D
 Acq: 10 Jun 2022 14:54



Tgt Ion: 276 Resp: 1373674
 Ion Ratio Lower Upper
 276 100
 138 24.6 17.0 25.6
 277 20.6 17.8 26.6

