

Data Path : Z:\svoasrv\HPCHEM1\BNA\_N\Data\BN061224\  
 Data File : BN031941.D  
 Acq On : 12 Jun 2024 14:44  
 Operator : MA/JU  
 Sample : P2678-21  
 Misc :  
 ALS Vial : 32 Sample Multiplier: 1

Instrument :  
 BNA\_N  
 ClientSampleId :  
 BH690

Integration Parameters: LSCINT.P

Integrator: RTE  
 Smoothing : OFF Filtering: 5  
 Sampling : 1 Min Area: 0.1 % of largest Peak  
 Start Thrs: 0.2 Max Peaks: 100  
 Stop Thrs : 0 Peak Location: TOP

If leading or trailing edge < 100 prefer < Baseline drop else tangent >  
 Peak separation: 5

Method : Z:\svoasrv\HPCHEM1\BNA\_N\Methods\SFAM-EPA-BN052924.MA.M  
 Title : SVOA CALIBRATION

Signal : TIC: BN031941.D\data.ms

peak #	R.T. min	first scan	max scan	last scan	PK TY	peak height	corr. area	corr. % max.	% of total
1	3.181	29	33	42	rVB	66007	89033	1.30%	0.106%
2	3.446	74	78	85	rVB	63908	87069	1.27%	0.104%
3	3.581	99	101	117	rBV	513312	803800	11.73%	0.958%
4	3.899	150	155	159	rBV	40858	57369	0.84%	0.068%
5	4.793	301	307	317	rVB	31681	56205	0.82%	0.067%
6	5.322	391	397	406	rBV	35794	84279	1.23%	0.100%
7	5.687	451	459	464	rBV	34101	56326	0.82%	0.067%
8	5.758	467	471	483	rVB	30800	51783	0.76%	0.062%
9	6.658	617	624	630	rBV8	8536	21912	0.32%	0.026%
10	6.752	634	640	644	rVV	32144	49559	0.72%	0.059%
11	6.834	644	654	669	rVB	1243716	2054974	29.99%	2.448%
12	7.005	676	683	696	rVB	978382	1604554	23.42%	1.912%
13	7.193	706	715	725	rBV	1271587	2010684	29.34%	2.395%
14	7.275	725	729	731	rVV2	21027	33901	0.49%	0.040%
15	7.305	731	734	740	rVB	29855	46757	0.68%	0.056%
16	7.658	786	794	802	rBV	1175116	1893923	27.64%	2.256%
17	7.734	802	807	810	rVV3	23264	43467	0.63%	0.052%
18	8.199	880	886	897	rVB3	15379	31768	0.46%	0.038%
19	8.287	901	901	908	rBV2	15229	28449	0.42%	0.034%
20	8.369	908	915	925	rBV	1520898	2593066	37.84%	3.089%
21	8.752	973	980	984	rBV	13927	25403	0.37%	0.030%
22	8.816	984	991	998	rVV	1231282	2022279	29.51%	2.409%
23	8.981	1012	1019	1028	rVB9	8154	23526	0.34%	0.028%
24	9.381	1081	1087	1095	rVB	116448	188856	2.76%	0.225%
25	9.534	1105	1113	1124	rBV	1021428	1716965	25.06%	2.046%
26	10.063	1192	1203	1213	rVV	1582401	2724608	39.76%	3.246%
27	10.134	1213	1215	1222	rVV5	16830	36522	0.53%	0.044%
28	10.228	1226	1231	1240	rVB9	8612	20012	0.29%	0.024%
29	10.440	1258	1267	1275	rBV	1704613	2937951	42.88%	3.500%
30	10.587	1283	1292	1313	rBV	1396592	2545693	37.15%	3.033%
31	10.993	1352	1361	1370	rBV4	34931	73954	1.08%	0.088%
32	11.187	1387	1394	1408	rBV2	133437	302027	4.41%	0.360%
33	12.034	1533	1538	1545	rBV	29666	48446	0.71%	0.058%
34	12.110	1545	1551	1556	rVB2	22903	39494	0.58%	0.047%
35	12.328	1584	1588	1595	rVB	19363	34500	0.50%	0.041%
36	13.122	1717	1723	1729	rVB3	22958	40850	0.60%	0.049%

Data Path : Z:\svoasrv\HPCHEM1\BNA\_N\Data\BN061224\  
 Data File : BN031941.D  
 Acq On : 12 Jun 2024 14:44  
 Operator : MA/JU  
 Sample : P2678-21  
 Misc :  
 ALS Vial : 32 Sample Multiplier: 1

Instrument :  
 BNA\_N  
 ClientSampleId :  
 BH690

Integration Parameters: LSCINT.P

Integrator: RTE  
 Smoothing : OFF Filtering: 5  
 Sampling : 1 Min Area: 0.1 % of largest Peak  
 Start Thrs: 0.2 Max Peaks: 100  
 Stop Thrs : 0 Peak Location: TOP

If leading or trailing edge < 100 prefer < Baseline drop else tangent >  
 Peak separation: 5

Method : Z:\svoasrv\HPCHEM1\BNA\_N\Methods\SFAM-EPA-BN052924.MA.M  
 Title : SVOA CALIBRATION

37	13.475	1775	1783	1788	rBV4	13395	35402	0.52%	0.042%
38	13.616	1803	1807	1813	rVV2	22678	41715	0.61%	0.050%
39	13.675	1813	1817	1818	rVV4	16459	20678	0.30%	0.025%
40	13.716	1818	1824	1832	rVV	2730935	3998726	58.36%	4.764%
41	13.781	1832	1835	1840	rVB3	16850	27562	0.40%	0.033%
42	13.993	1859	1871	1884	rBV	3216664	5063653	73.90%	6.033%
43	14.204	1898	1907	1913	rVB2	21872	34170	0.50%	0.041%
44	14.304	1914	1924	1931	rBV	2494628	3786306	55.26%	4.511%
45	14.369	1931	1935	1948	rVB6	20968	56216	0.82%	0.067%
46	14.522	1954	1961	1981	rBV	982289	1850272	27.00%	2.204%
47	14.704	1988	1992	2001	rVV	36673	90261	1.32%	0.108%
48	14.775	2001	2004	2008	rVV3	18844	28406	0.41%	0.034%
49	14.822	2008	2012	2019	rVV9	12187	21645	0.32%	0.026%
50	14.922	2021	2029	2034	rBV6	19374	38687	0.56%	0.046%
51	15.092	2052	2058	2062	rBV6	17024	33024	0.48%	0.039%
52	15.157	2066	2069	2076	rVB3	21385	29957	0.44%	0.036%
53	15.298	2086	2093	2100	rBV	4024820	5826522	85.03%	6.941%
54	15.345	2100	2101	2105	rVV3	26993	31051	0.45%	0.037%
55	15.428	2109	2115	2127	rVV	999070	1395922	20.37%	1.663%
56	15.539	2130	2134	2143	rVB5	23712	61669	0.90%	0.073%
57	15.651	2148	2153	2160	rVB4	18122	41618	0.61%	0.050%
58	15.798	2175	2178	2184	rVB3	14619	29769	0.43%	0.035%
59	16.022	2211	2216	2224	rBV6	41662	96186	1.40%	0.115%
60	16.210	2242	2248	2251	rBV7	11879	20470	0.30%	0.024%
61	16.463	2287	2291	2296	rBV7	15499	26593	0.39%	0.032%
62	16.592	2306	2313	2316	rBV6	18268	42523	0.62%	0.051%
63	16.710	2328	2333	2340	rVB3	33678	64330	0.94%	0.077%
64	16.786	2340	2346	2347	rBV5	18850	27641	0.40%	0.033%
65	16.816	2347	2351	2356	rVV3	35419	53172	0.78%	0.063%
66	16.869	2356	2360	2368	rVB2	33930	60403	0.88%	0.072%
67	16.957	2371	2375	2377	rBV5	14947	20932	0.31%	0.025%
68	17.051	2384	2391	2396	rBV	2626288	3901035	56.93%	4.648%
69	17.092	2396	2398	2402	rVV	413130	494758	7.22%	0.589%
70	17.151	2402	2408	2418	rVV2	3960120	5610884	81.89%	6.685%
71	17.228	2418	2421	2428	rVB8	22887	50239	0.73%	0.060%
72	17.463	2452	2461	2470	rBV	53061	118994	1.74%	0.142%
73	17.551	2472	2476	2483	rVV4	26316	56455	0.82%	0.067%
74	17.633	2486	2490	2498	rVB5	23376	37690	0.55%	0.045%
75	17.728	2503	2506	2510	rVB2	35176	42385	0.62%	0.050%
76	17.957	2535	2545	2554	rBV2	548725	1155145	16.86%	1.376%

Data Path : Z:\svoasrv\HPCHEM1\BNA\_N\Data\BN061224\  
 Data File : BN031941.D  
 Acq On : 12 Jun 2024 14:44  
 Operator : MA/JU  
 Sample : P2678-21  
 Misc :  
 ALS Vial : 32 Sample Multiplier: 1

Instrument :  
 BNA\_N  
 ClientSampleId :  
 BH690

Integration Parameters: LSCINT.P

Integrator: RTE  
 Smoothing : OFF Filtering: 5  
 Sampling : 1 Min Area: 0.1 % of largest Peak  
 Start Thrs: 0.2 Max Peaks: 100  
 Stop Thrs : 0 Peak Location: TOP

If leading or trailing edge < 100 prefer < Baseline drop else tangent >  
 Peak separation: 5

Method : Z:\svoasrv\HPCHEM1\BNA\_N\Methods\SFAM-EPA-BN052924.MA.M  
 Title : SVOA CALIBRATION

77	18.116	2568	2572	2577	rBV2	81019	154332	2.25%	0.184%
78	18.157	2577	2579	2584	rVB	54556	67162	0.98%	0.080%
79	18.245	2590	2594	2597	rBV3	50537	73355	1.07%	0.087%
80	18.286	2597	2601	2604	rVV4	35567	51383	0.75%	0.061%
81	18.433	2622	2626	2630	rBV	62424	88629	1.29%	0.106%
82	18.475	2630	2633	2641	rVB	59756	97503	1.42%	0.116%
83	18.680	2666	2668	2671	rVB2	25272	22659	0.33%	0.027%
84	18.728	2673	2676	2680	rVV	28986	42813	0.62%	0.051%
85	18.769	2680	2683	2687	rVB3	29738	40443	0.59%	0.048%
86	18.851	2693	2697	2700	rBV2	61993	93800	1.37%	0.112%
87	18.886	2700	2703	2704	rBV	23383	25017	0.37%	0.030%
88	19.010	2717	2724	2728	rBV4	71913	147259	2.15%	0.175%
89	19.116	2733	2742	2750	rBV	807707	1213348	17.71%	1.446%
90	19.239	2760	2763	2772	rVB2	120568	205810	3.00%	0.245%
91	19.451	2793	2799	2812	rBV2	4333228	6852062	100.00%	8.163%
92	19.557	2814	2817	2822	rVB2	51574	76969	1.12%	0.092%
93	19.980	2886	2889	2891	rBV	57089	62744	0.92%	0.075%
94	20.498	2974	2977	2981	rBV2	99514	130901	1.91%	0.156%
95	20.980	3054	3059	3065	rBV2	637325	994496	14.51%	1.185%
96	21.286	3104	3111	3116	rBV	2438100	4114845	60.05%	4.902%
97	21.327	3116	3118	3125	rVB	366654	512674	7.48%	0.611%
98	23.292	3447	3452	3458	rBV	217546	544611	7.95%	0.649%
99	24.015	3567	3575	3583	rBV2	2299190	5361200	78.24%	6.387%
100	24.215	3601	3609	3627	rVB2	1554813	4061089	59.27%	4.838%

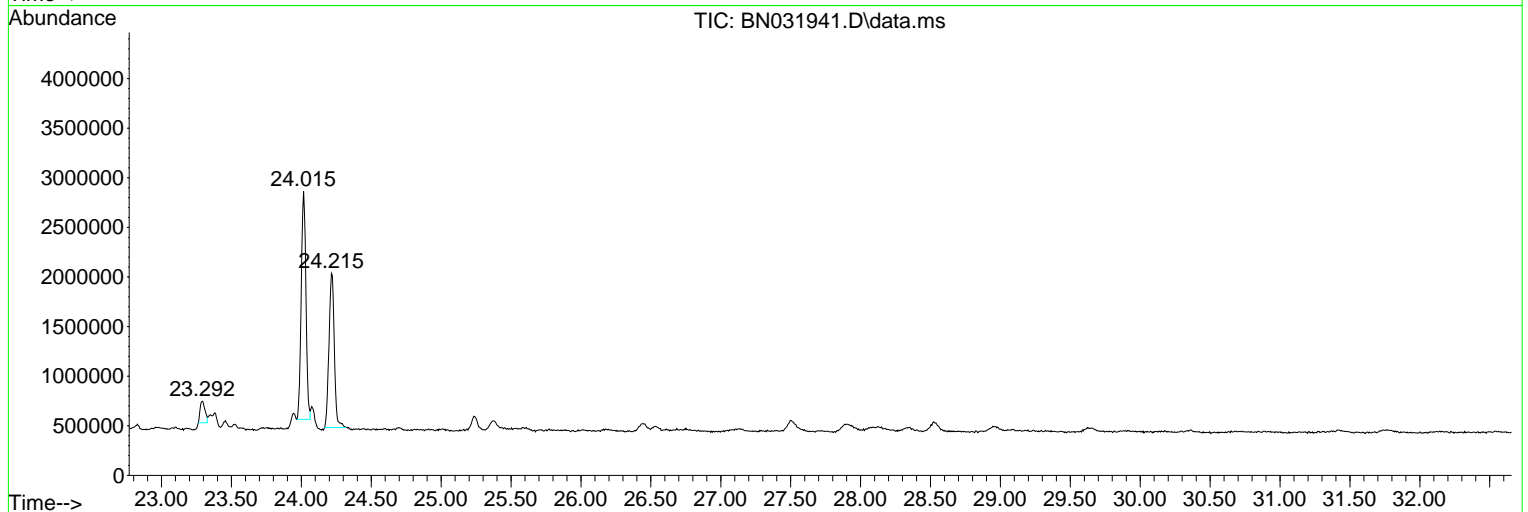
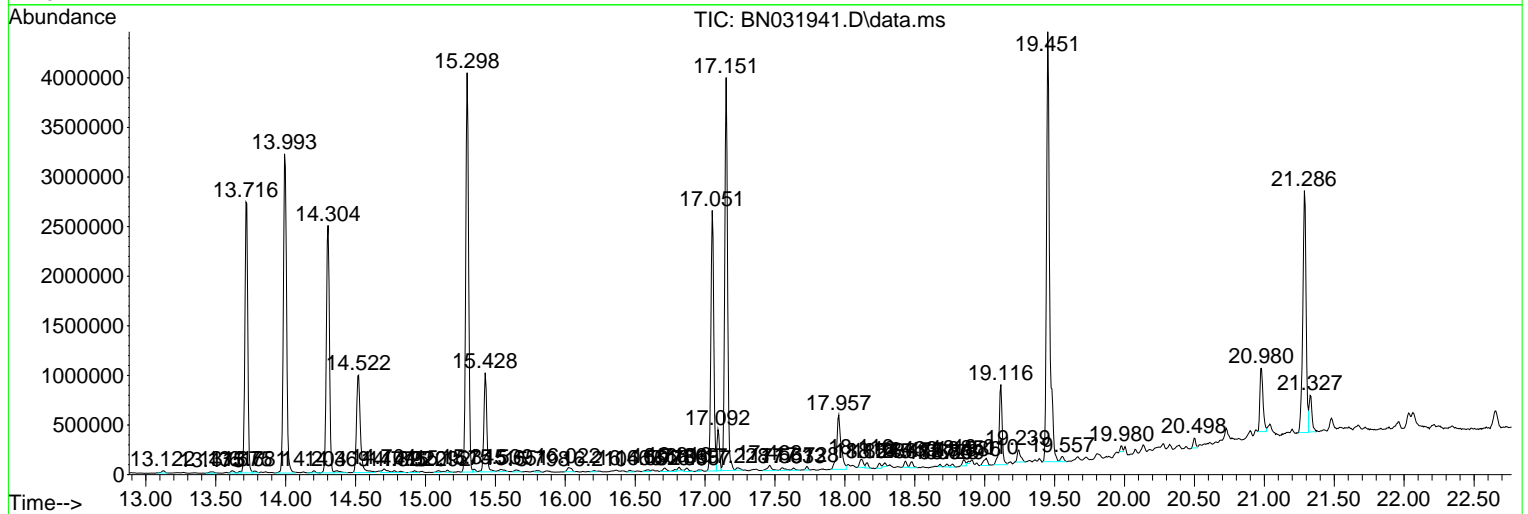
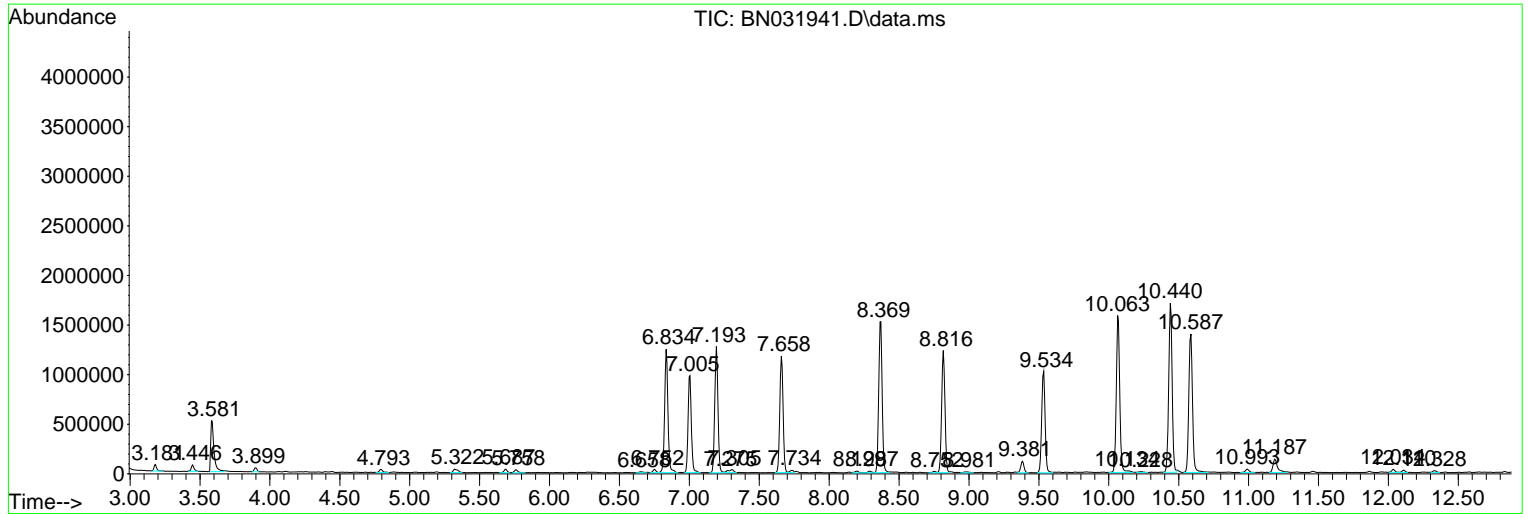
Sum of corrected areas: 83938134

Data Path : Z:\svoasrv\HPCHEM1\BNA\_N\Data\BN061224\  
 Data File : BN031941.D  
 Acq On : 12 Jun 2024 14:44  
 Operator : MA/JU  
 Sample : P2678-21  
 Misc :  
 ALS Vial : 32 Sample Multiplier: 1

Instrument :  
 BNA\_N  
 ClientSampleId :  
 BH690

Quant Method : Z:\svoasrv\HPCHEM1\BNA\_N\Methods\SFAM-EPA-BN052924.MA.M  
 Quant Title : SVOA CALIBRATION

TIC Library : C:\Database\NIST20.L  
 TIC Integration Parameters: LSCINT.P



Data Path : Z:\svoasrv\HPCHEM1\BNA\_N\Data\BN061224\  
 Data File : BN031941.D  
 Acq On : 12 Jun 2024 14:44  
 Operator : MA/JU  
 Sample : P2678-21  
 Misc :  
 ALS Vial : 32 Sample Multiplier: 1

Instrument :  
 BNA\_N  
 ClientSampleId :  
 BH690

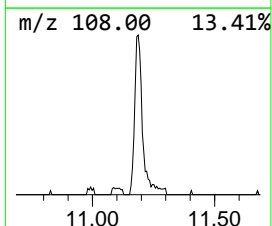
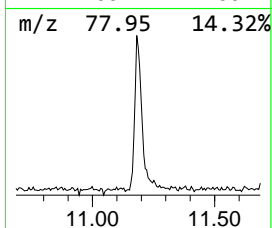
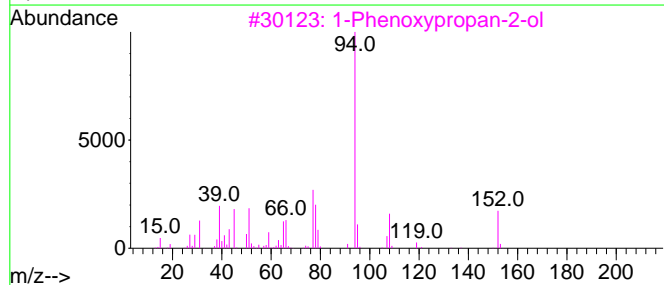
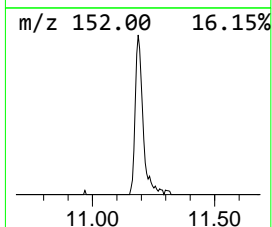
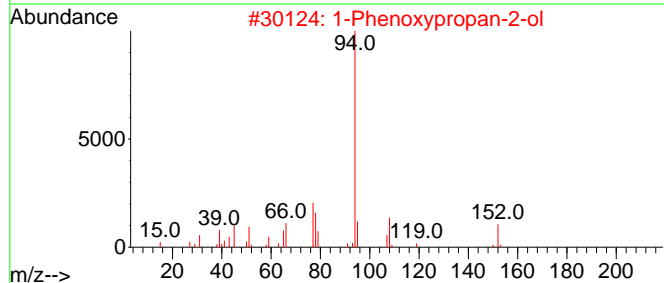
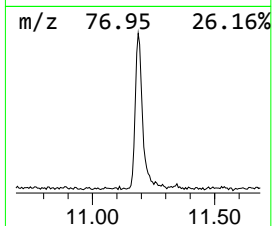
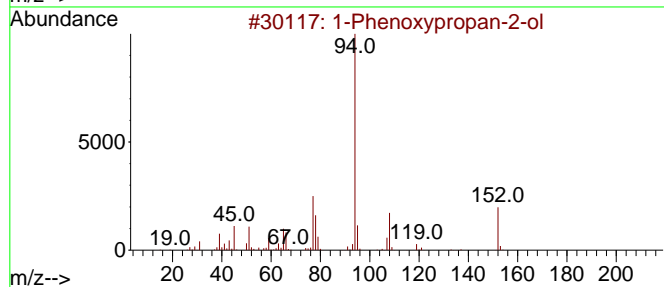
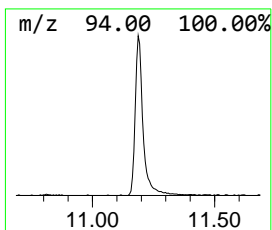
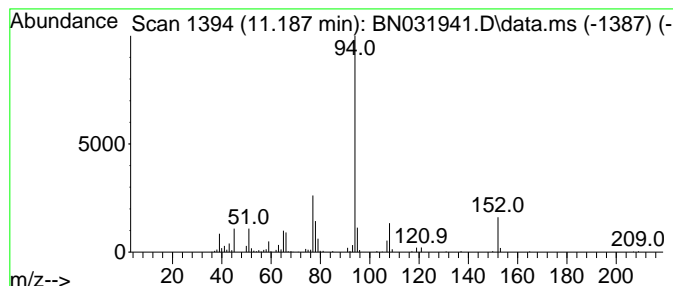
Quant Method : Z:\svoasrv\HPCHEM1\BNA\_N\Methods\SFAM-EPA-BN052924.MA.M  
 Quant Title : SVOA CALIBRATION

TIC Library : C:\Database\NIST20.L  
 TIC Integration Parameters: LSCINT.P

\*\*\*\*\*  
 Peak Number 1 1-Phenoxypropan-2-ol Concentration Rank 3

R.T.	EstConc	Area	Relative to ISTD	R.T.
11.187	2.06 ng/ul	302027	Naphthalene-d8	10.440

Hit#	of 5	Tentative ID	MW	MolForm	CAS#	Qual
1		1-Phenoxypropan-2-ol	152	C9H12O2	000770-35-4	96
2		1-Phenoxypropan-2-ol	152	C9H12O2	000770-35-4	94
3		1-Phenoxypropan-2-ol	152	C9H12O2	000770-35-4	94
4		1-Propanol, 3-phenoxy-	152	C9H12O2	006180-61-6	83
5		Ethanol, 2-phenoxy-	138	C8H10O2	000122-99-6	64



Data Path : Z:\svoasrv\HPCHEM1\BNA\_N\Data\BN061224\  
 Data File : BN031941.D  
 Acq On : 12 Jun 2024 14:44  
 Operator : MA/JU  
 Sample : P2678-21  
 Misc :  
 ALS Vial : 32 Sample Multiplier: 1

Instrument :  
 BNA\_N  
 ClientSampleId :  
 BH690

Quant Method : Z:\svoasrv\HPCHEM1\BNA\_N\Methods\SFAM-EPA-BN052924.MA.M  
 Quant Title : SVOA CALIBRATION

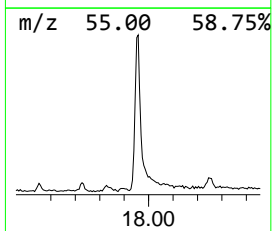
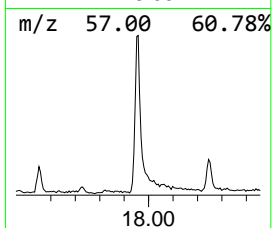
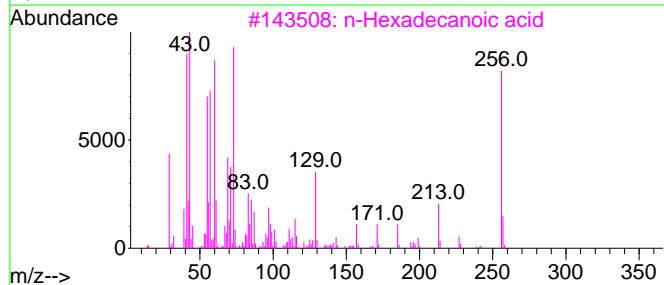
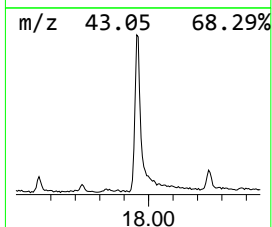
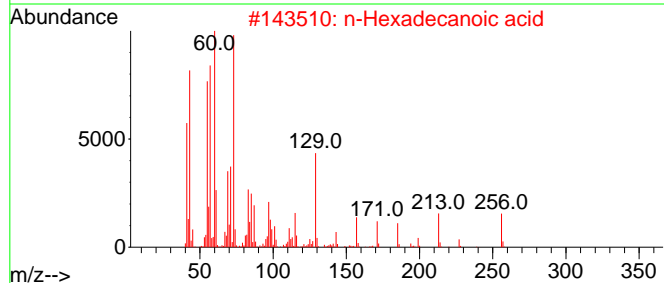
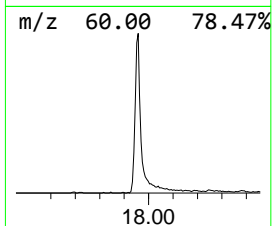
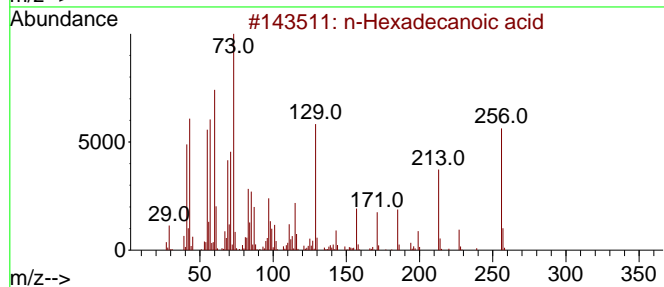
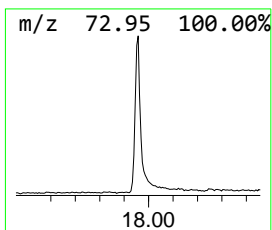
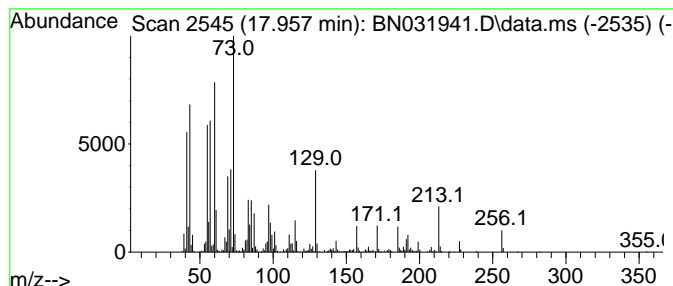
TIC Library : C:\Database\NIST20.L  
 TIC Integration Parameters: LSCINT.P

\*\*\*\*\*  
 Peak Number 2 n-Hexadecanoic acid Concentration Rank 1

R.T.	EstConc	Area	Relative to ISTD	R.T.
17.957	5.92 ng/ul	1155150	Phenanthrene-d10	17.051

Hit#	of 5	Tentative ID	MW	MolForm	CAS#	Qual
1		n-Hexadecanoic acid	256	C16H32O2	000057-10-3	99
2		n-Hexadecanoic acid	256	C16H32O2	000057-10-3	99
3		n-Hexadecanoic acid	256	C16H32O2	000057-10-3	99
4		n-Hexadecanoic acid	256	C16H32O2	000057-10-3	99
5		n-Hexadecanoic acid	256	C16H32O2	000057-10-3	97



Data Path : Z:\svoasrv\HPCHEM1\BNA\_N\Data\BN061224\  
 Data File : BN031941.D  
 Acq On : 12 Jun 2024 14:44  
 Operator : MA/JU  
 Sample : P2678-21  
 Misc :  
 ALS Vial : 32 Sample Multiplier: 1

Instrument :  
 BNA\_N  
 ClientSampleId :  
 BH690

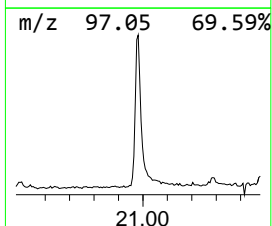
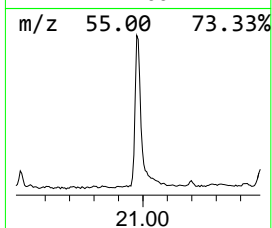
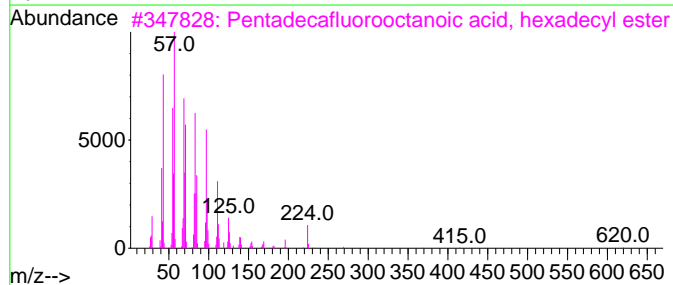
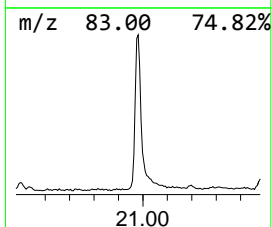
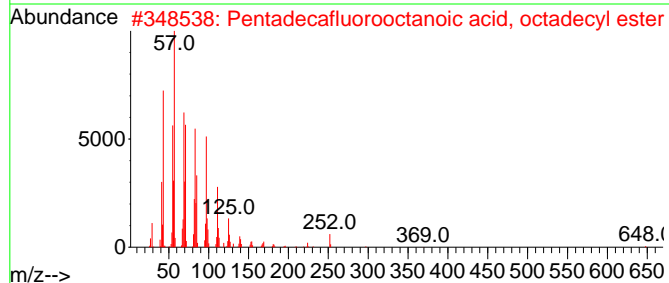
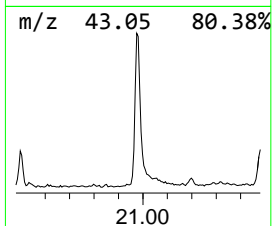
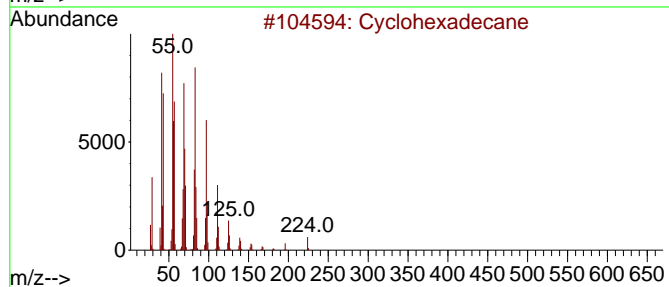
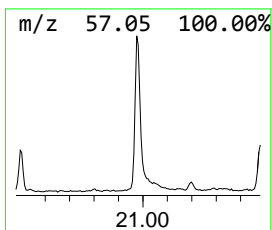
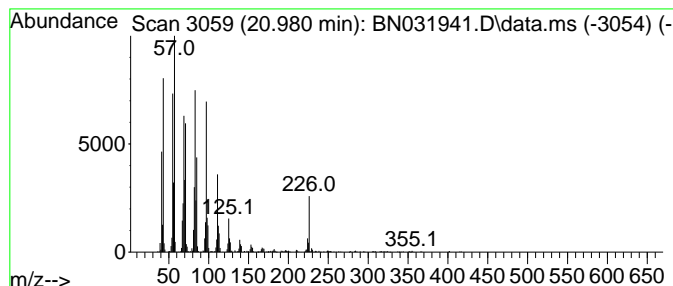
Quant Method : Z:\svoasrv\HPCHEM1\BNA\_N\Methods\SFAM-EPA-BN052924.MA.M  
 Quant Title : SVOA CALIBRATION

TIC Library : C:\Database\NIST20.L  
 TIC Integration Parameters: LSCINT.P

\*\*\*\*\*  
 Peak Number 3 (DEL) Alkane: Cyclic20.980 Concentration Rank 2

R.T.	EstConc	Area	Relative to ISTD	R.T.
20.980	4.83 ng/ul	994496	Chrysene-d12	21.292

Hit#	of 5	Tentative ID	MW	MolForm	CAS#	Qual
1		Cyclohexadecane	224	C16H32	000295-65-8	94
2		Pentadecafluorooctanoic acid, oc...	666	C26H37F15O2	1000406-04-8	93
3		Pentadecafluorooctanoic acid, he...	638	C24H33F15O2	1000406-04-6	93
4		1-Heneicosanol	312	C21H44O	015594-90-8	92
5		Cyclopentadecane	210	C15H30	000295-48-7	91



Data Path : Z:\svoasrv\HPCHEM1\BNA\_N\Data\BN061224\  
Data File : BN031941.D  
Acq On : 12 Jun 2024 14:44  
Operator : MA/JU  
Sample : P2678-21  
Misc :  
ALS Vial : 32 Sample Multiplier: 1

Instrument :  
BNA\_N  
ClientSampleId :  
BH690

Quant Method : Z:\svoasrv\HPCHEM1\BNA\_N\Methods\SFAM-EPA-BN052924.MA.M  
Quant Title : SVOA CALIBRATION

TIC Library : C:\Database\NIST20.L  
TIC Integration Parameters: LSCINT.P

TIC Top Hit name	RT	EstConc	Units	Response	--Internal Standard--			
					#	RT	Resp	Conc
1-Phenoxypropan...	11.187	2.1	ng/u1	302027	2	10.440	2937950	20.0
n-Hexadecanoic ...	17.957	5.9	ng/u1	1155150	4	17.051	3901040	20.0
(DEL) Alkane: C...	20.980	4.8	ng/u1	994496	5	21.292	4114850	20.0