

Data Path : Z:\SVOASRV\HPCHEM1\BNA N\DATA\BN061820\
 Data File : BN010962.D
 Acq On : 18 Jun 2020 20:23
 Operator : CG/JU
 Sample : L3020-23
 Misc :
 ALS Vial : 8 Sample Multiplier: 1

Instrument :
 BNA_N
 ClientSampleId :
 MW-27

Quant Time: Jun 19 04:04:59 2020
 Quant Method : Z:\SVOASRV\HPCHEM1\BNA N\METHODS\8270-SIM-BN061020.M
 Quant Title : ASP BNA STANDARDS FOR 5 POINT CALIBRATION
 QLast Update : Thu Jun 18 14:14:42 2020
 Response via : Initial Calibration

Internal Standards	R.T.	QIon	Response	Conc	Units	Dev(Min)
1) 1,4-Dichlorobenzene-d4	7.54	152	2939	0.40	ng	0.00
7) Naphthalene-d8	10.29	136	10377	0.40	ng	0.00
13) Acenaphthene-d10	14.16	164	7164	0.40	ng	0.00
19) Phenanthrene-d10	16.91	188	13116	0.40	ng	0.00
27) Chrysene-d12	21.12	240	11398	0.40	ng	0.00
34) Perylene-d12	23.26	264	11723	0.40	ng	0.00

System Monitoring Compounds	R.T.	QIon	Response	Conc	Units	Dev(Min)
4) 2-Fluorophenol	5.18	112	13114	2.31	ng	0.00
5) Phenol-d6	6.71	99	2400	0.36	ng	-0.02
8) Nitrobenzene-d5	8.67	82	5366	0.70	ng	0.00
11) 2-Methylnaphthalene-d10	11.88	152	5333	0.33	ng	0.00
14) 2,4,6-Tribromophenol	15.66	330	1258	0.49	ng	0.00
15) 2-Fluorobiphenyl	12.78	172	13899	0.49	ng	0.00
25) Fluoranthene-d10	18.95	212	13817	0.38	ng	0.00
29) Terphenyl-d14	19.56	244	16627	0.62	ng	0.00

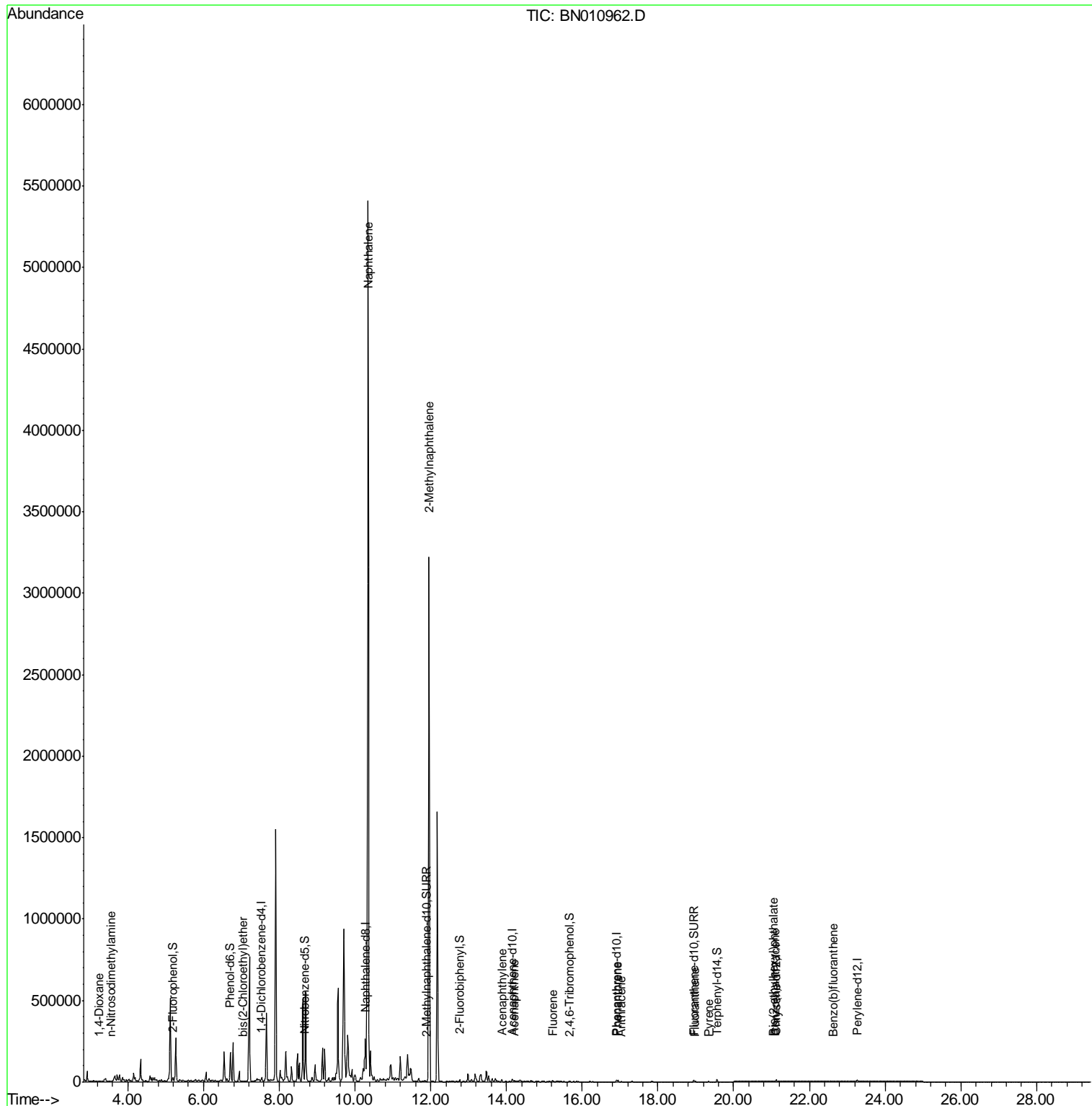
Target Compounds	R.T.	QIon	Response	Conc	Units	Qvalue
2) 1,4-Dioxane	3.23	88	124	0.043	ng	# 1
3) n-Nitrosodimethylamine	3.55	42	2246	1.342	ng	# 1
6) bis(2-Chloroethyl)ether	7.03	93	1385	0.213	ng	# 1
9) Naphthalene	10.34	128	7084023	271.644	ng	99
12) 2-Methylnaphthalene	11.96	142	2302765	131.944	ng	96
16) Acenaphthylene	13.88	152	1718	0.059	ng	# 1
17) Acenaphthene	14.21	154	2967	0.148	ng	# 84
18) Fluorene	15.22	166	4111	0.159	ng	# 98
23) Phenanthrene	16.94	178	8464	0.236	ng	97
24) Anthracene	17.04	178	1215	0.041	ng	# 82
26) Fluoranthene	18.98	202	4304	0.106	ng	# 96
28) Pyrene	19.34	202	3491	0.093	ng	# 86
30) Benzo(a)anthracene	21.10	228	818	0.024	ng	# 60
32) Bis(2-ethylhexyl)phthalate	21.06	149	2120	0.190	ng	# 98
35) Benzo(b)fluoranthene	22.64	252	849	0.021	ng	# 1

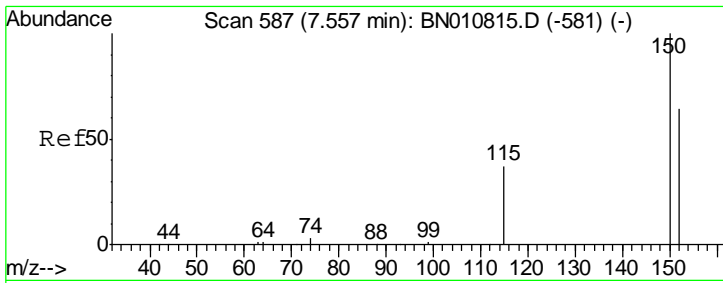
(#) = qualifier out of range (m) = manual integration (+) = signals summed

Data Path : Z:\SVOASRV\HPCHEM1\BNA N\DATA\BN061820\
 Data File : BN010962.D
 Acq On : 18 Jun 2020 20:23
 Operator : CG/JU
 Sample : L3020-23
 Misc :
 ALS Vial : 8 Sample Multiplier: 1

Instrument :
 BNA_N
 ClientSampleId :
 MW-27

Quant Time: Jun 19 04:04:59 2020
 Quant Method : Z:\SVOASRV\HPCHEM1\BNA N\METHODS\8270-SIM-BN061020.M
 Quant Title : ASP BNA STANDARDS FOR 5 POINT CALIBRATION
 QLast Update : Thu Jun 18 14:14:42 2020
 Response via : Initial Calibration

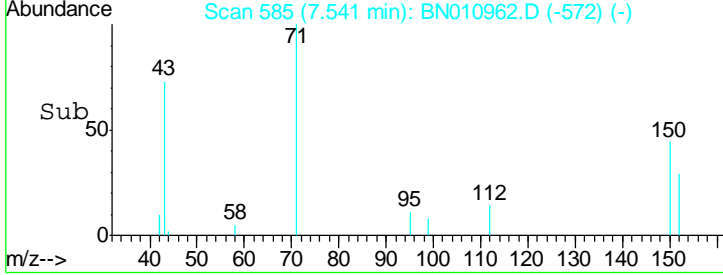
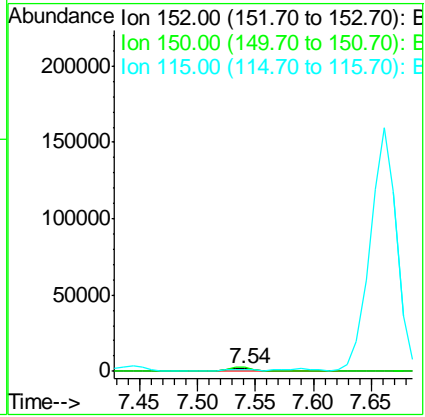
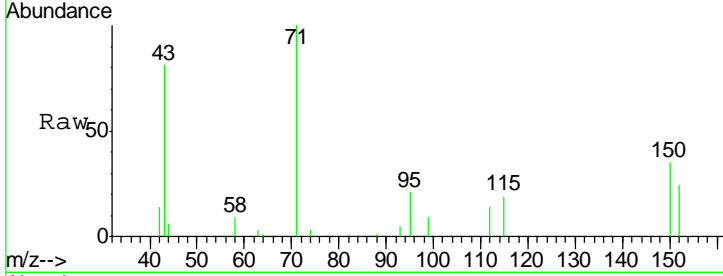




#1
 1,4-Dichlorobenzene-d4
 Concen: 0.400 ng
 RT: 7.54 min Scan# 585
 Delta R.T. 0.01 min
 Lab File: BN010962.D
 Acq: 18 Jun 2020 20:23

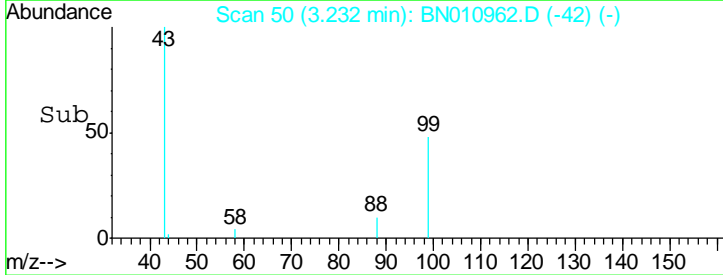
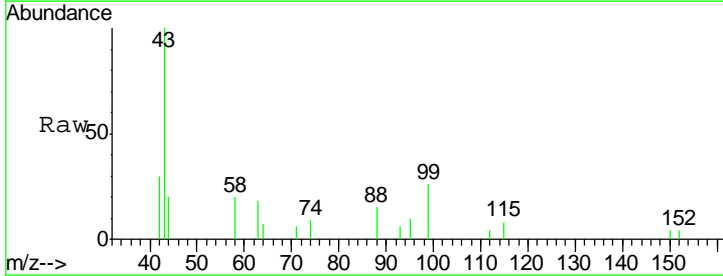
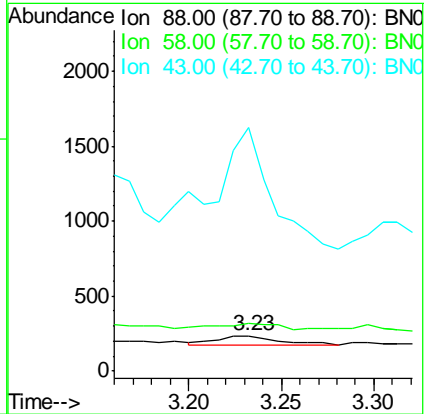
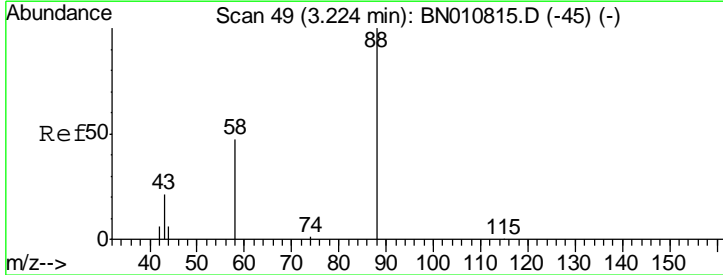
Instrument :
 BNA_N
ClientSampled :
 MW-27

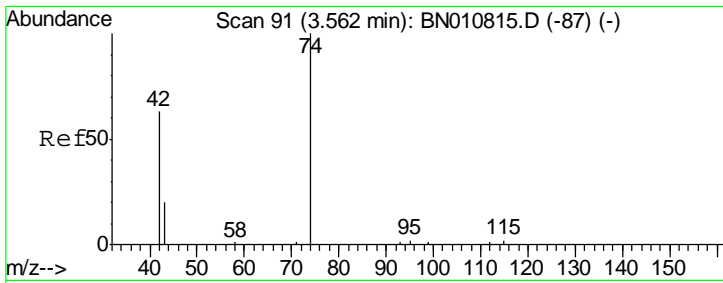
Tgt Ion	Resp	Lower	Upper
152	100		
150	147.5	123.8	185.6
115	79.9	49.2	73.8#



#2
 1,4-Dioxane
 Concen: 0.043 ng
 RT: 3.23 min Scan# 50
 Delta R.T. 0.02 min
 Lab File: BN010962.D
 Acq: 18 Jun 2020 20:23

Tgt Ion	Resp	Lower	Upper
88	100		
58	69.4	38.2	57.4#
43	1464.5	15.1	22.7#

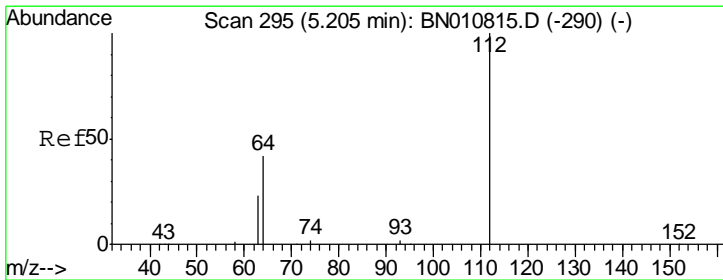
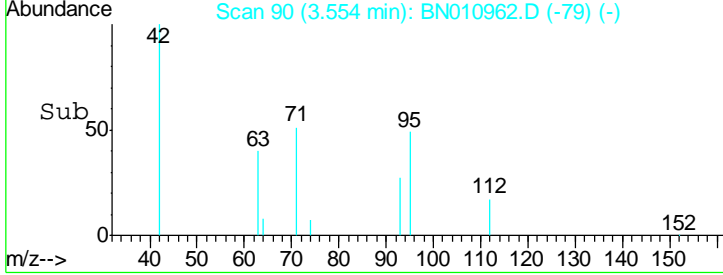
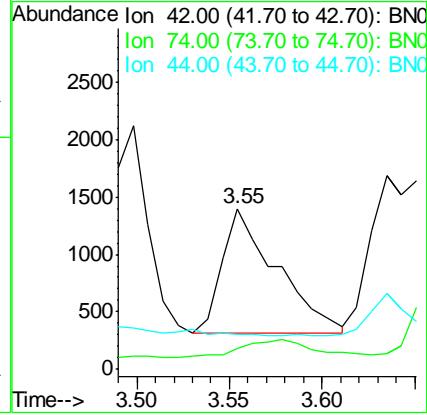
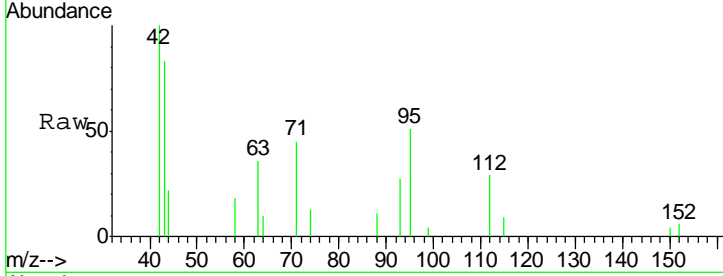




#3
 n-Nitrosodimethylamine
 Concen: 1.342 ng
 RT: 3.55 min Scan# 90
 Delta R.T. -0.01 min
 Lab File: BN010962.D
 Acq: 18 Jun 2020 20:23

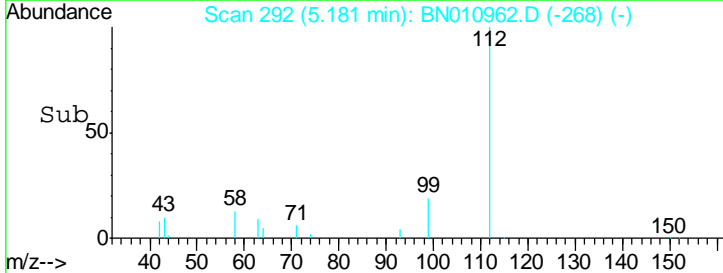
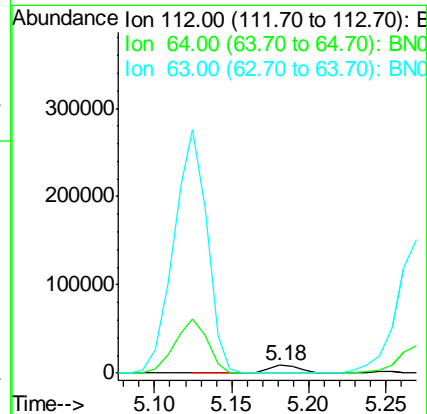
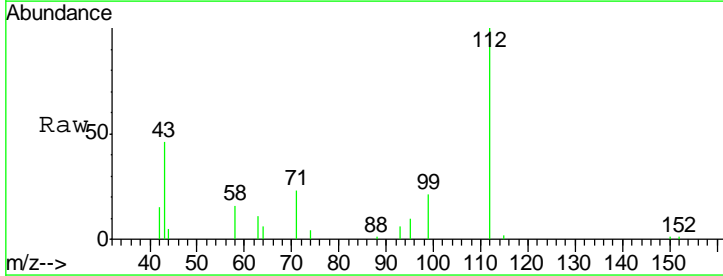
Instrument :
 BNA_N
 ClientSampled :
 MW-27

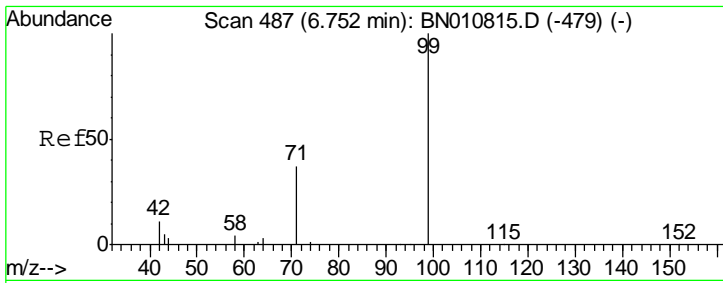
Tgt Ion	Resp	Lower	Upper
42	100		
74	0.0	140.7	211.1#
44	0.0	1.4	2.2#



#4
 2-Fluorophenol
 Concen: 2.311 ng
 RT: 5.18 min Scan# 292
 Delta R.T. -0.01 min
 Lab File: BN010962.D
 Acq: 18 Jun 2020 20:23

Tgt Ion	Resp	Lower	Upper
112	100		
64	0.0	37.4	56.0#
63	0.0	22.2	33.4#

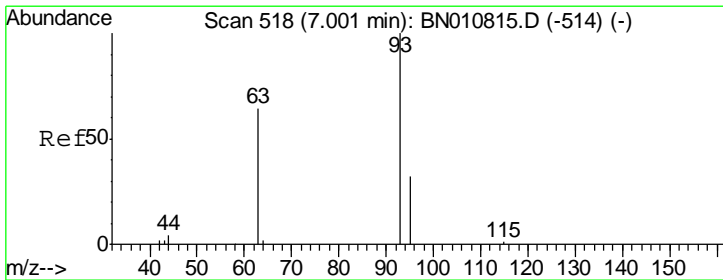
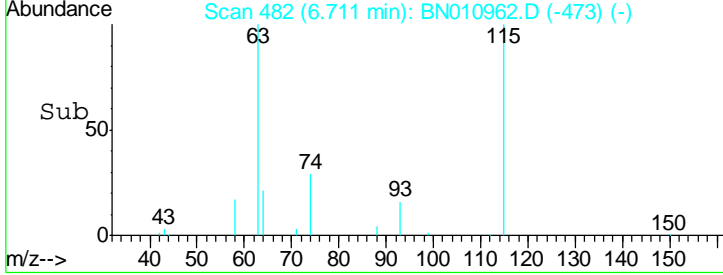
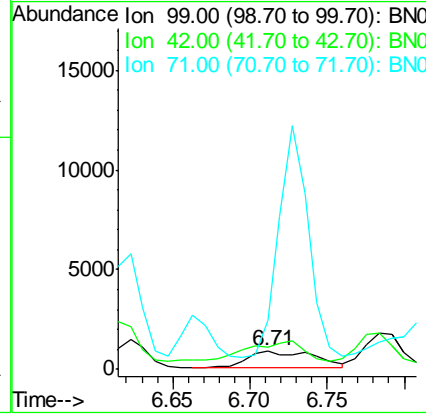
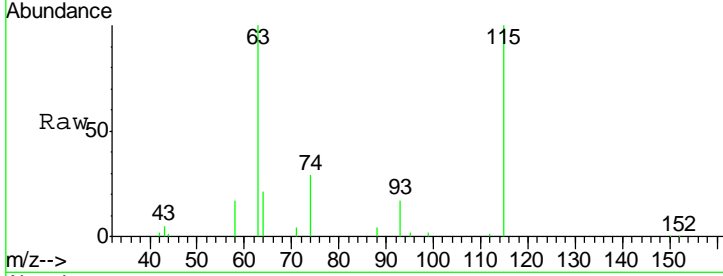




#5
 Phenol-d6
 Concen: 0.359 ng
 RT: 6.71 min Scan# 482
 Delta R.T. -0.02 min
 Lab File: BN010962.D
 Acq: 18 Jun 2020 20:23

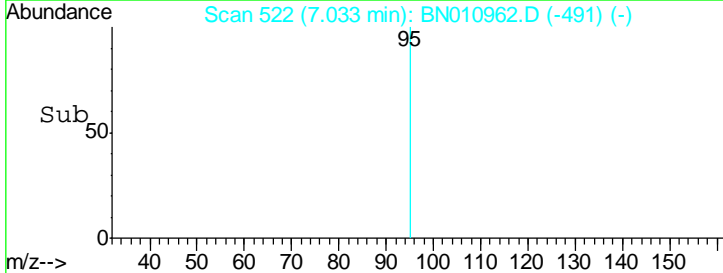
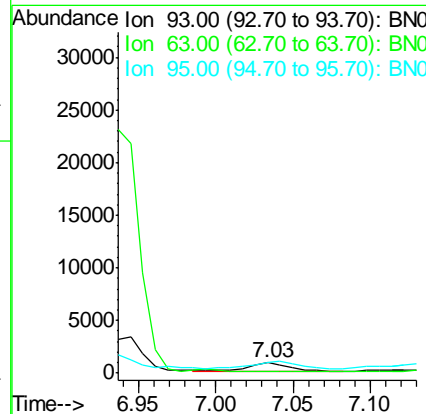
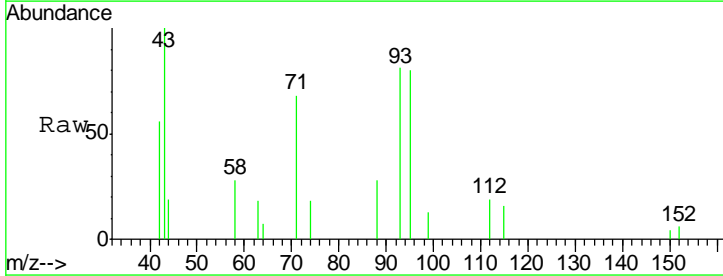
Instrument :
 BNA_N
ClientSampled :
 MW-27

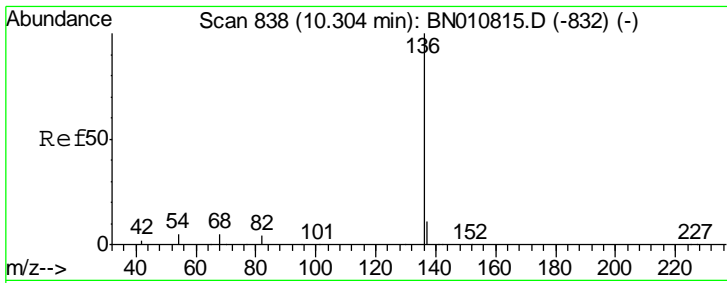
Tgt Ion	Resp	Lower	Upper
99	2400		
42	115.8	11.1	16.7#
71	648.5	31.4	47.2#



#6
 bis(2-Chloroethyl)ether
 Concen: 0.213 ng
 RT: 7.03 min Scan# 522
 Delta R.T. 0.05 min
 Lab File: BN010962.D
 Acq: 18 Jun 2020 20:23

Tgt Ion	Resp	Lower	Upper
93	1385		
63	0.0	49.4	74.2#
95	116.5	26.7	40.1#

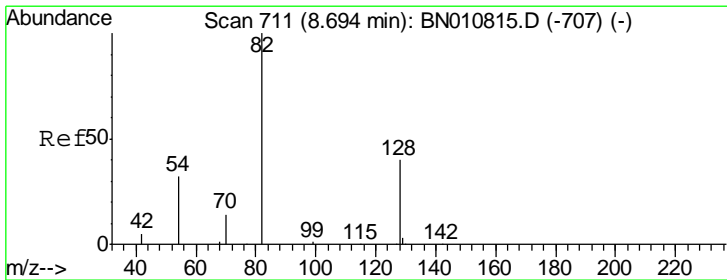
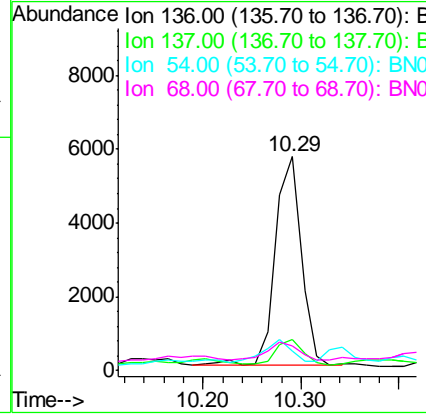
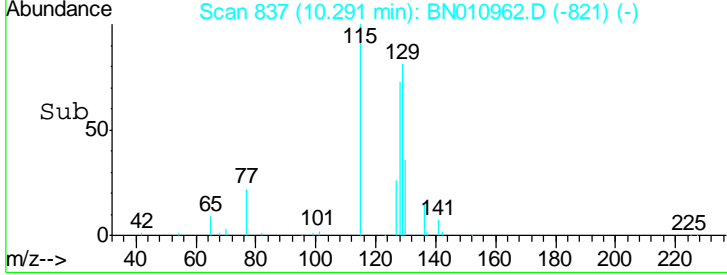
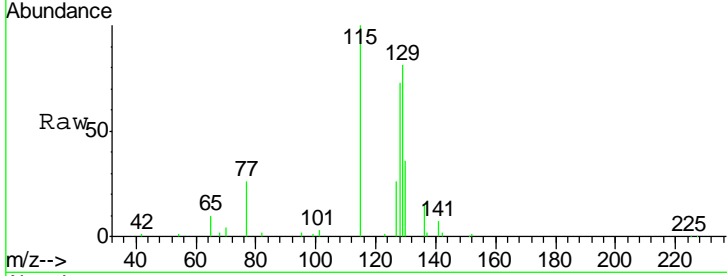




#7
 Naphthalene-d8
 Concen: 0.400 ng
 RT: 10.29 min Scan# 837
 Delta R.T. -0.00 min
 Lab File: BN010962.D
 Acq: 18 Jun 2020 20:23

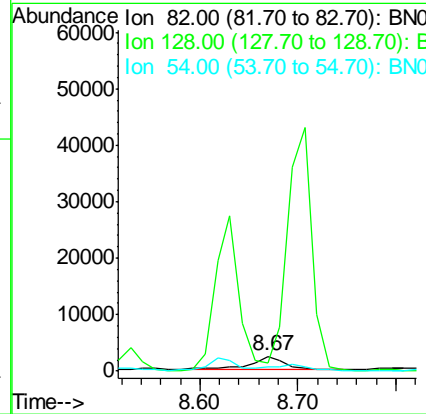
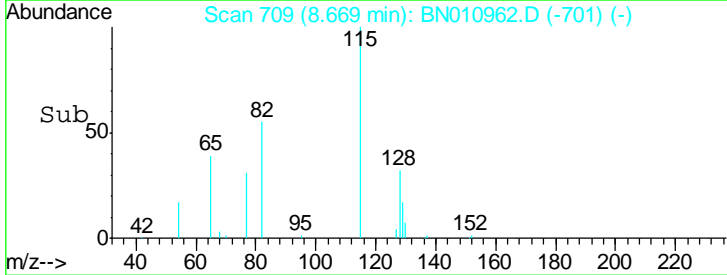
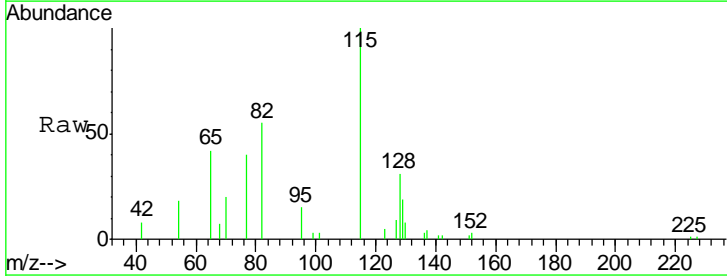
Instrument :
 BNA_N
 ClientSampled :
 MW-27

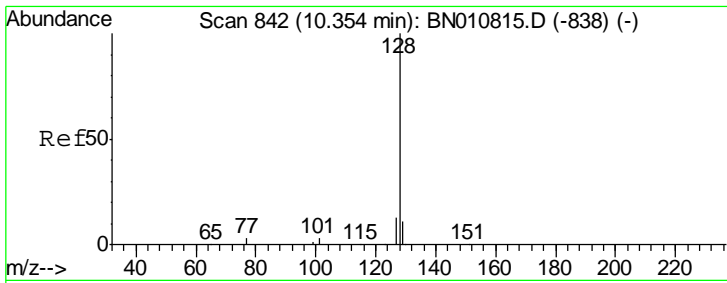
Tgt Ion	Resp	Lower	Upper
136	10377		
137	14.5	9.7	14.5
54	9.0	4.9	7.3#
68	11.4	4.7	7.1#



#8
 Nitrobenzene-d5
 Concen: 0.699 ng
 RT: 8.67 min Scan# 709
 Delta R.T. -0.00 min
 Lab File: BN010962.D
 Acq: 18 Jun 2020 20:23

Tgt Ion	Resp	Lower	Upper
82	5366		
128	56.6	35.4	53.0#
54	33.4	28.2	42.4



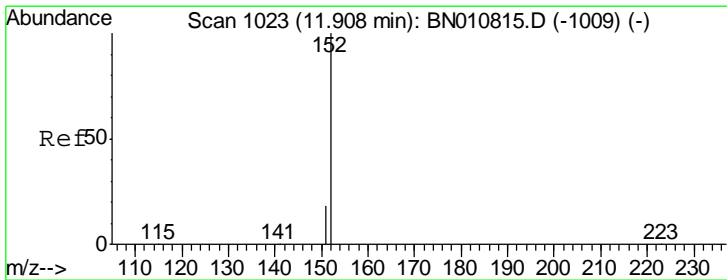
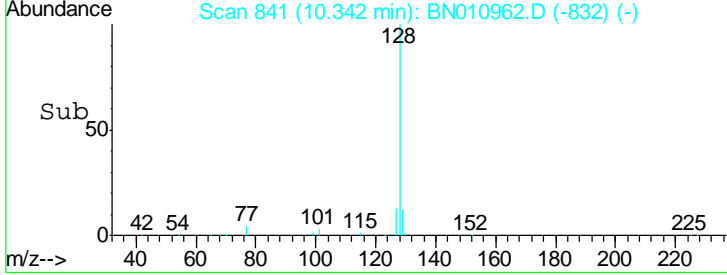
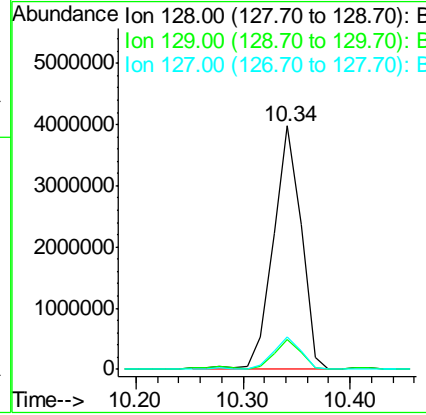
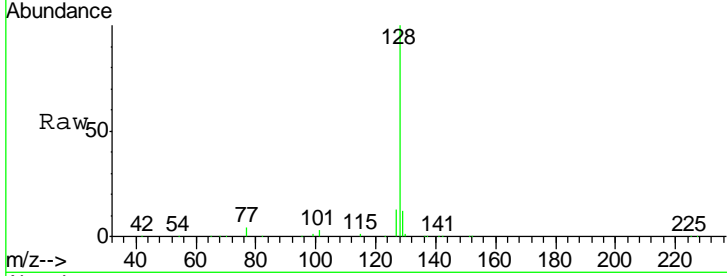


#9
 Naphthalene
 Concen: 271.644 ng
 RT: 10.34 min Scan# 841
 Delta R.T. 0.01 min
 Lab File: BN010962.D
 Acq: 18 Jun 2020 20:23

Instrument :
 BNA_N
 ClientSampled :
 MW-27

Tgt Ion:128 Resp: 7084023

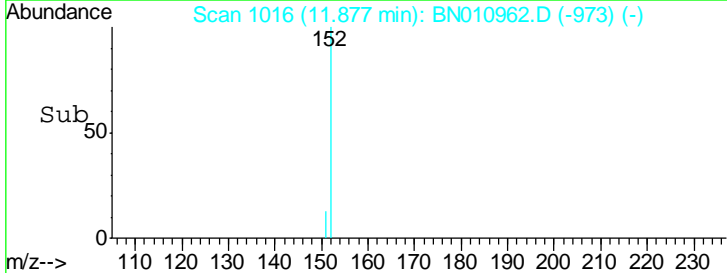
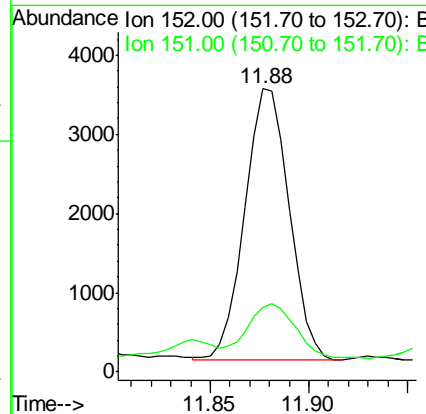
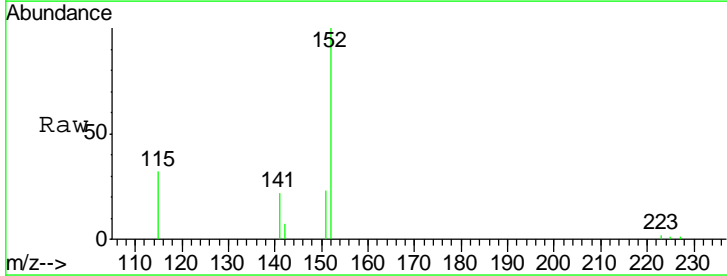
Ion	Ratio	Lower	Upper
128	100		
129	12.2	9.6	14.4
127	13.4	11.4	17.2

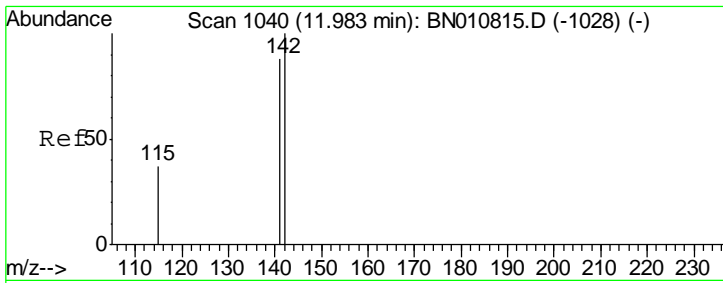


#11
 2-Methylnaphthalene-d10
 Concen: 0.331 ng
 RT: 11.88 min Scan# 1016
 Delta R.T. -0.01 min
 Lab File: BN010962.D
 Acq: 18 Jun 2020 20:23

Tgt Ion:152 Resp: 5333

Ion	Ratio	Lower	Upper
152	100		
151	24.7	15.3	22.9#

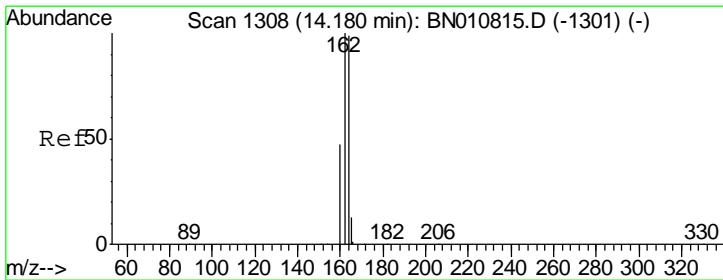
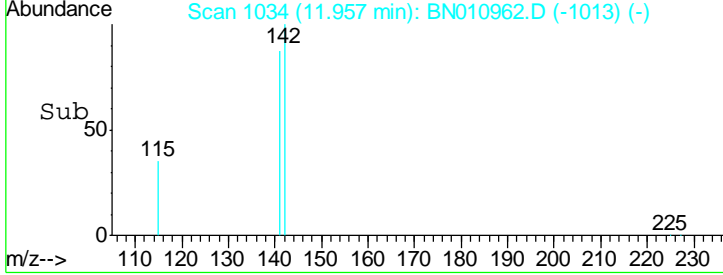
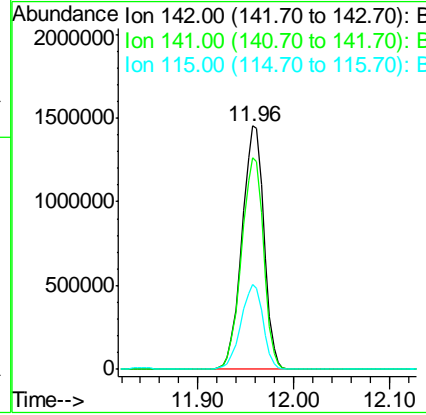
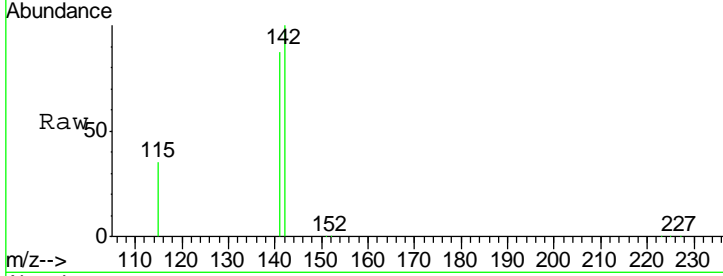




#12
 2-Methylnaphthalene
 Concen: 131.944 ng
 RT: 11.96 min Scan# 1034
 Delta R.T. -0.00 min
 Lab File: BN010962.D
 Acq: 18 Jun 2020 20:23

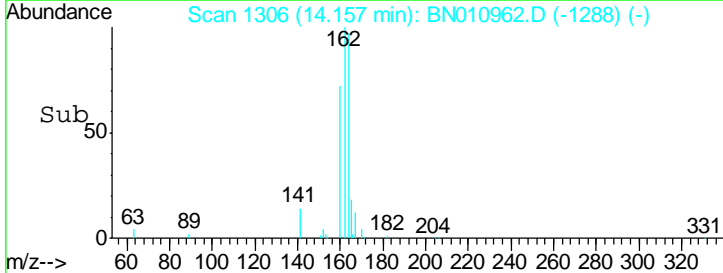
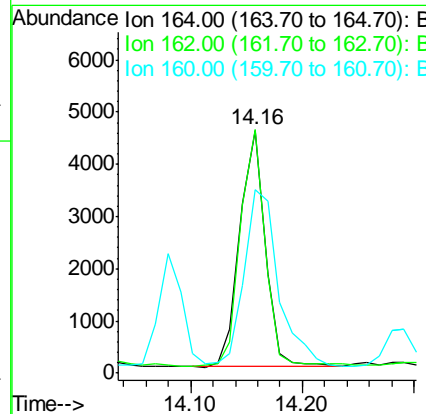
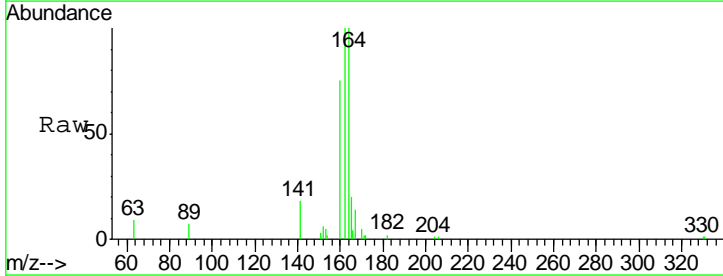
Instrument :
 BNA_N
 ClientSampled :
 MW-27

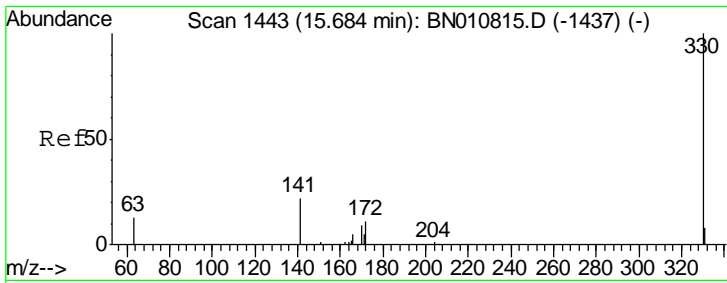
Tgt Ion	Resp	Lower	Upper
142	2302765		
141	87.0	70.8	106.2
115	34.7	31.5	47.3



#13
 Acenaphthene-d10
 Concen: 0.400 ng
 RT: 14.16 min Scan# 1306
 Delta R.T. -0.00 min
 Lab File: BN010962.D
 Acq: 18 Jun 2020 20:23

Tgt Ion	Resp	Lower	Upper
164	7164		
162	100.5	81.0	121.6
160	75.5	38.9	58.3#

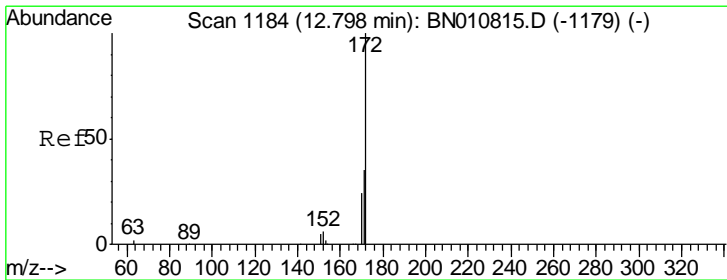
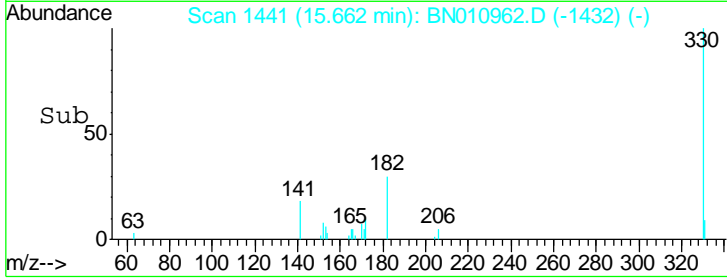
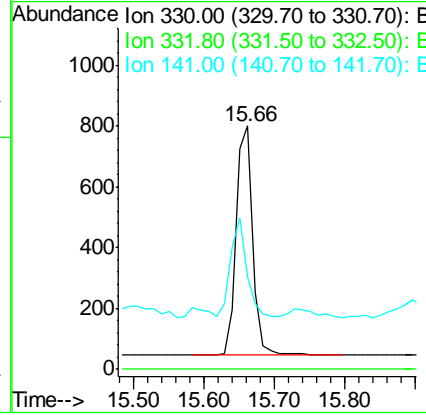
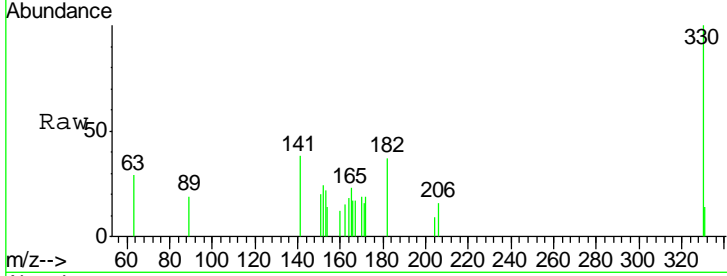




#14
 2,4,6-Tribromophenol
 Concen: 0.491 ng
 RT: 15.66 min Scan# 1441
 Delta R.T. -0.00 min
 Lab File: BN010962.D
 Acq: 18 Jun 2020 20:23

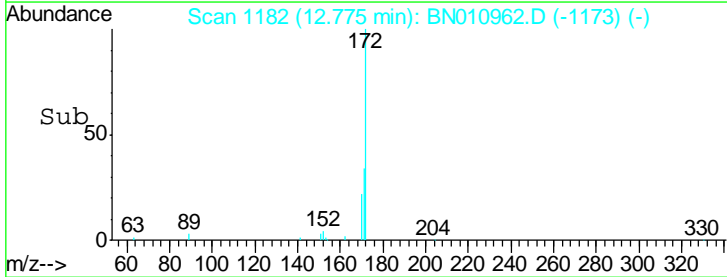
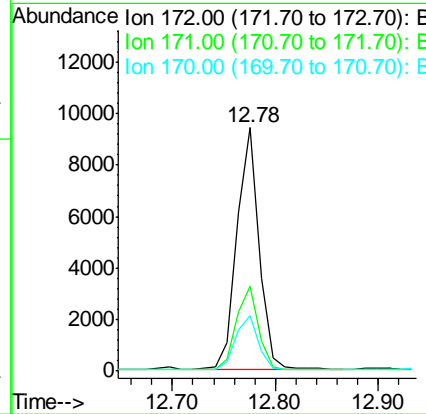
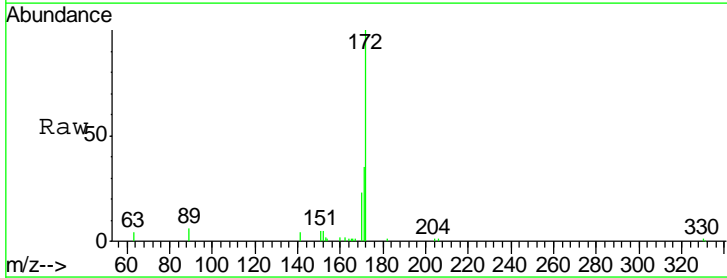
Instrument :
 BNA_N
 ClientSampled :
 MW-27

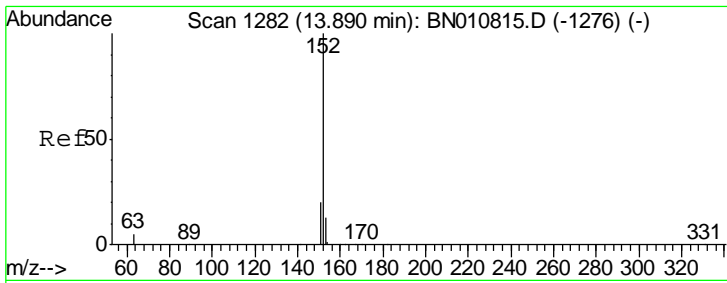
Tgt Ion	Resp	Lower	Upper
330	1258		
332	0.0	0.0	0.0
141	42.0	33.2	49.8



#15
 2-Fluorobiphenyl
 Concen: 0.492 ng
 RT: 12.78 min Scan# 1182
 Delta R.T. -0.00 min
 Lab File: BN010962.D
 Acq: 18 Jun 2020 20:23

Tgt Ion	Resp	Lower	Upper
172	13899		
171	34.8	28.5	42.7
170	22.6	19.7	29.5

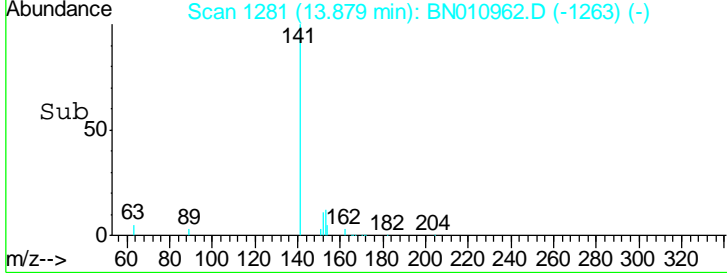
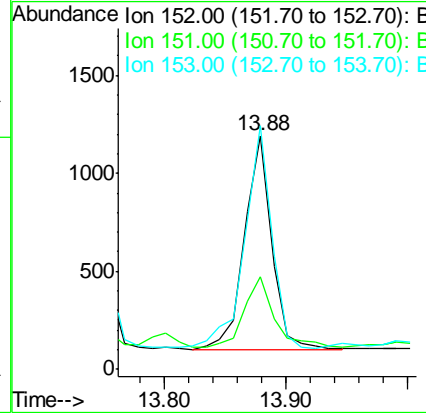
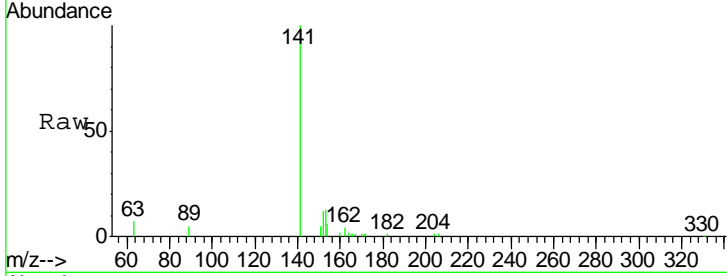




#16
 Acenaphthylene
 Concen: 0.059 ng
 RT: 13.88 min Scan# 1281
 Delta R.T. -0.00 min
 Lab File: BN010962.D
 Acq: 18 Jun 2020 20:23

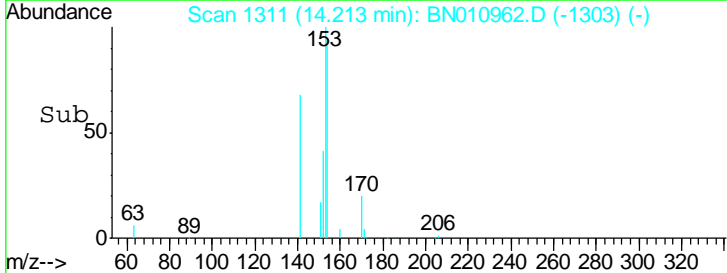
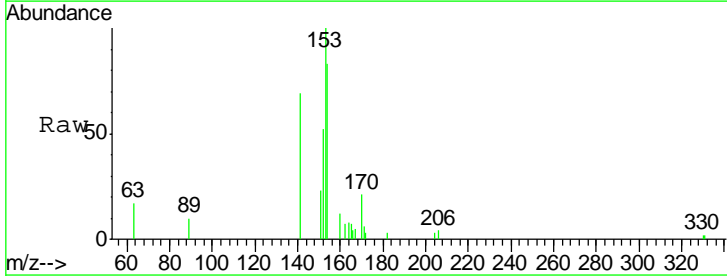
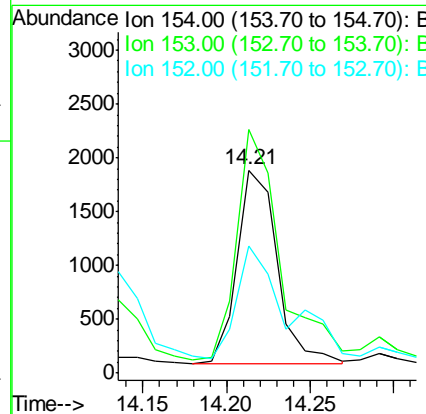
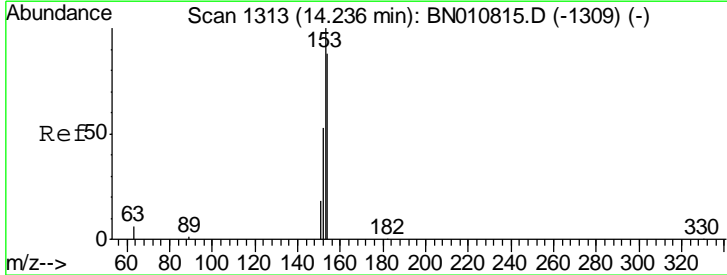
Instrument :
 BNA_N
 ClientSampled :
 MW-27

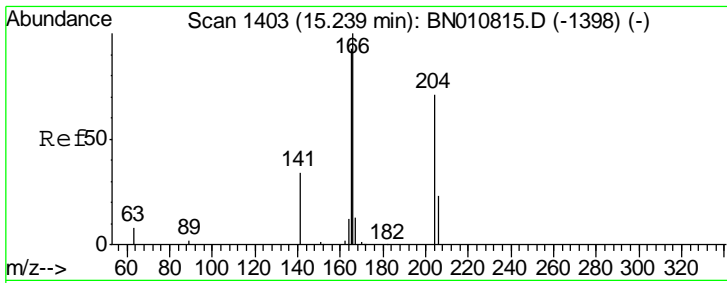
Tgt Ion	Resp	Lower	Upper
152	1718		
151	36.3	15.6	23.4#
153	102.9	10.6	16.0#



#17
 Acenaphthene
 Concen: 0.148 ng
 RT: 14.21 min Scan# 1311
 Delta R.T. -0.01 min
 Lab File: BN010962.D
 Acq: 18 Jun 2020 20:23

Tgt Ion	Resp	Lower	Upper
154	2967		
153	131.1	91.8	137.6
152	73.0	47.6	71.4#

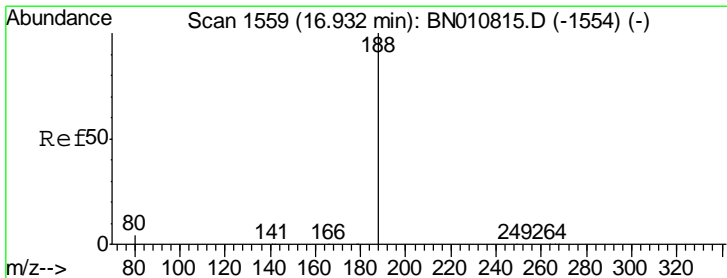
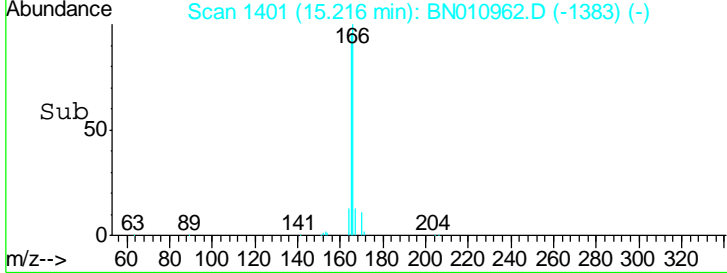
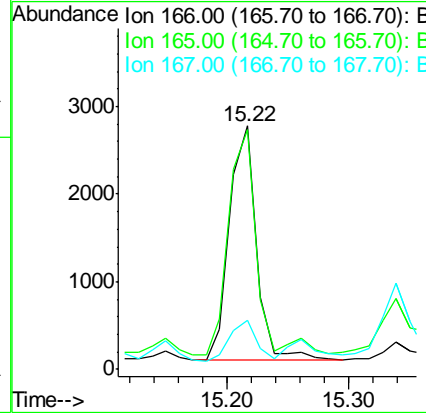
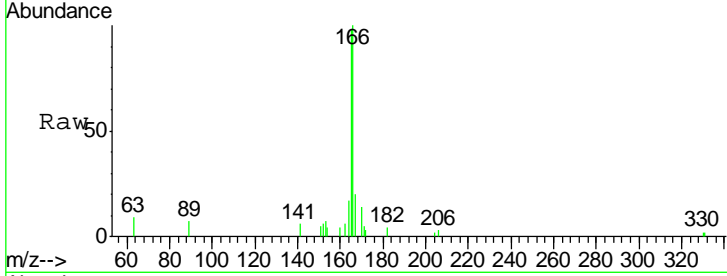




#18
 Fluorene
 Concen: 0.159 ng
 RT: 15.22 min Scan# 1401
 Delta R.T. -0.00 min
 Lab File: BN010962.D
 Acq: 18 Jun 2020 20:23

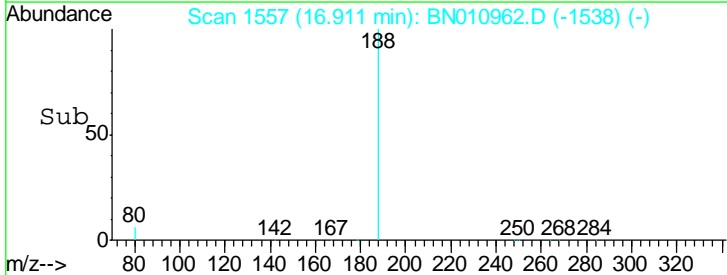
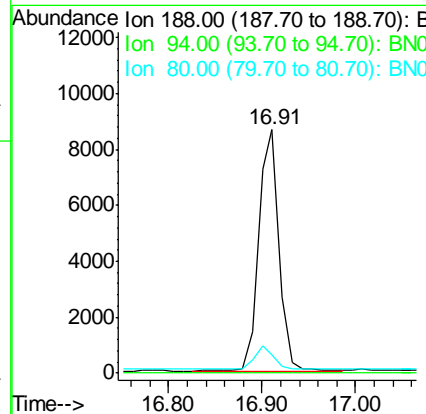
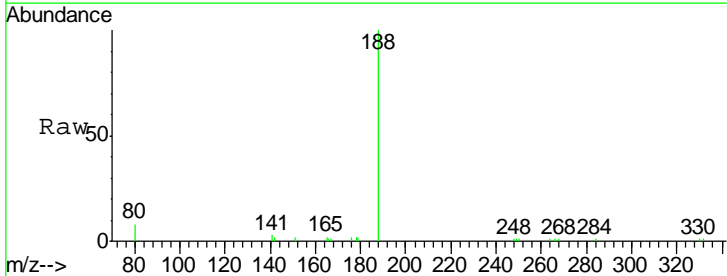
Instrument :
 BNA_N
 ClientSampled :
 MW-27

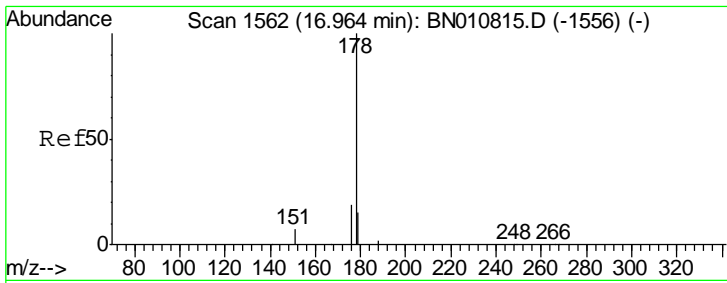
Tgt Ion	Resp	Lower	Upper
166	4111		
165	95.8	77.2	115.8
167	16.8	10.7	16.1#



#19
 Phenanthrene-d10
 Concen: 0.400 ng
 RT: 16.91 min Scan# 1557
 Delta R.T. -0.00 min
 Lab File: BN010962.D
 Acq: 18 Jun 2020 20:23

Tgt Ion	Resp	Lower	Upper
188	13116		
94	0.0	0.0	0.0
80	7.7	4.5	6.7#

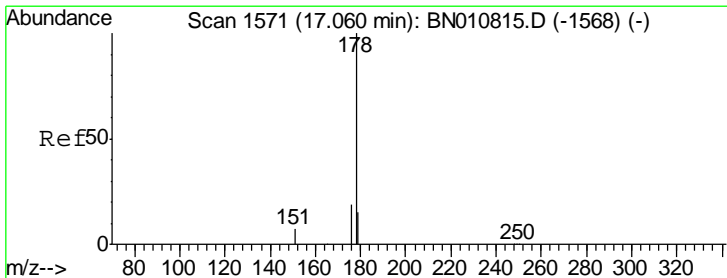
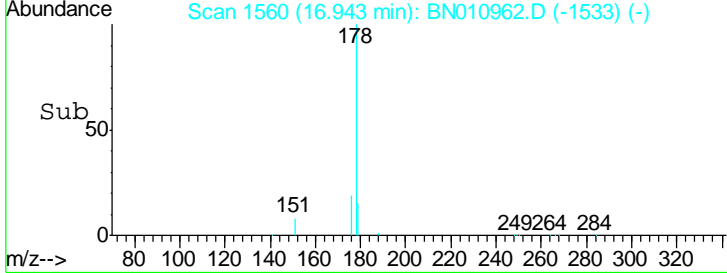
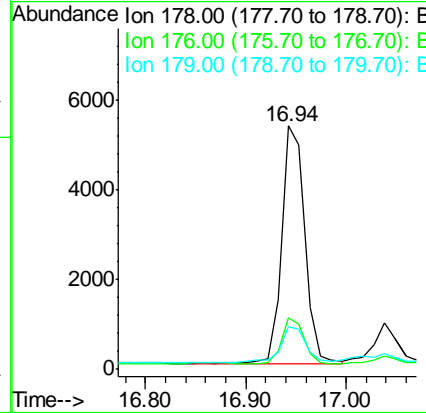
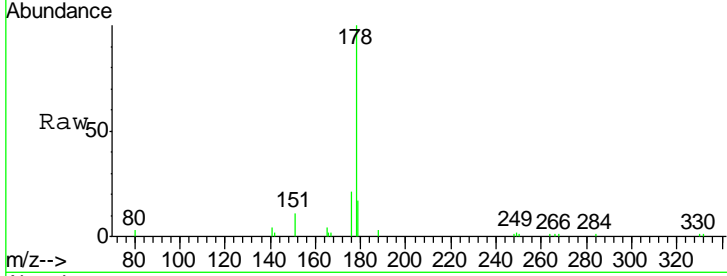




#23
 Phenanthrene
 Concen: 0.236 ng
 RT: 16.94 min Scan# 1560
 Delta R.T. -0.01 min
 Lab File: BN010962.D
 Acq: 18 Jun 2020 20:23

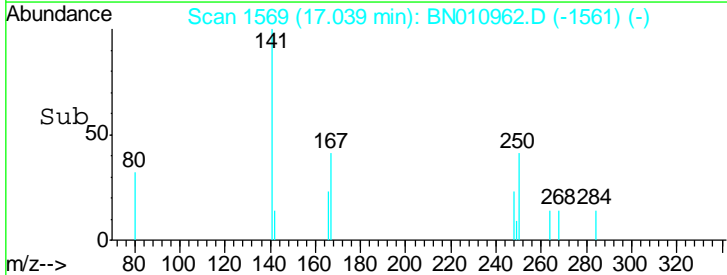
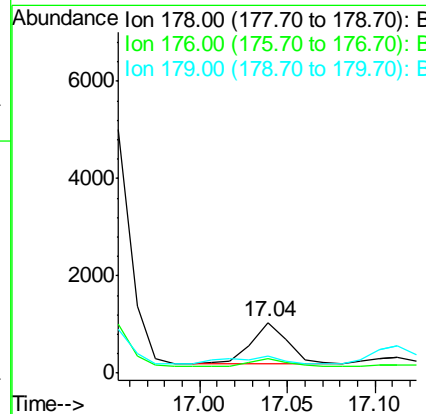
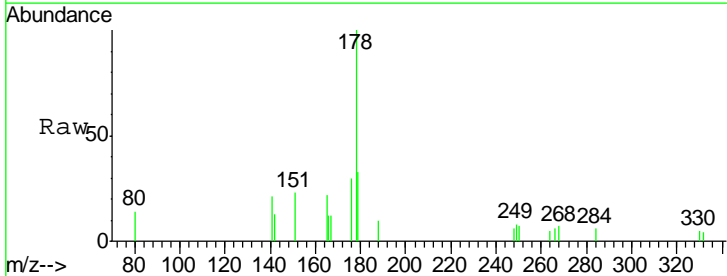
Instrument :
 BNA_N
 ClientSampled :
 MW-27

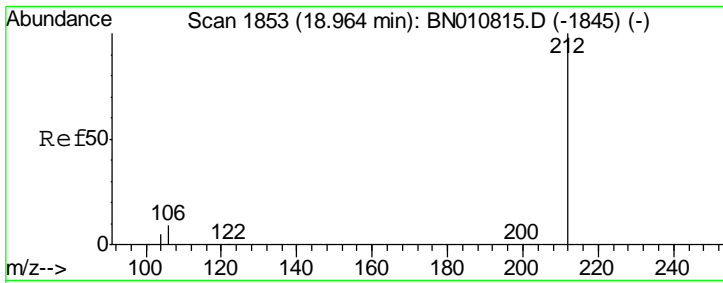
Tgt Ion	Resp	Lower	Upper
178	100		
176	18.3	15.3	22.9
179	17.7	12.6	19.0



#24
 Anthracene
 Concen: 0.041 ng
 RT: 17.04 min Scan# 1569
 Delta R.T. -0.01 min
 Lab File: BN010962.D
 Acq: 18 Jun 2020 20:23

Tgt Ion	Resp	Lower	Upper
178	100		
176	20.3	14.6	22.0
179	29.4	12.3	18.5#



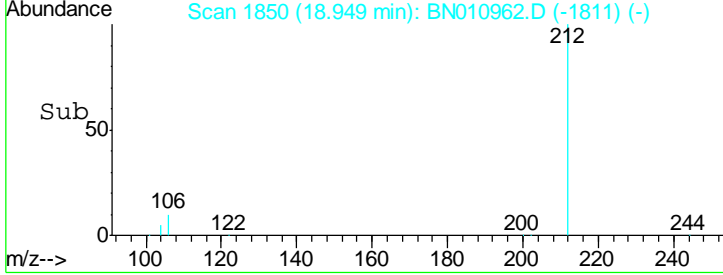
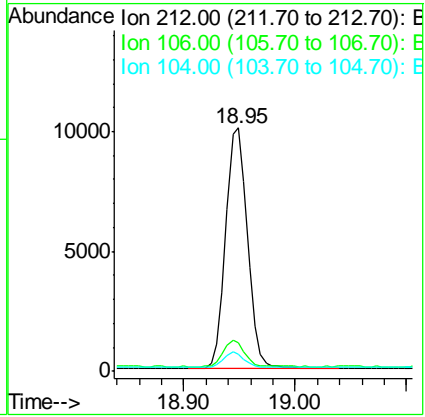
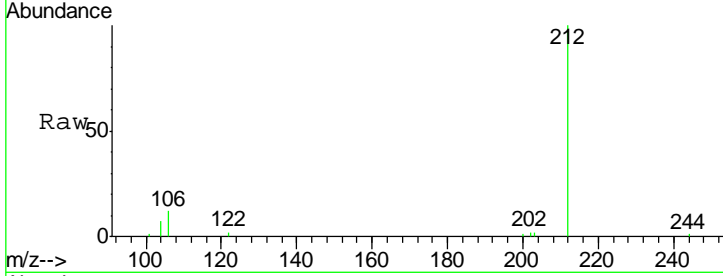


#25
 Fluoranthene-d10
 Concen: 0.382 ng
 RT: 18.95 min Scan# 1850
 Delta R.T. -0.01 min
 Lab File: BN010962.D
 Acq: 18 Jun 2020 20:23

Instrument :
 BNA_N
ClientSampled :
 MW-27

Tgt Ion: 212 Resp: 13817

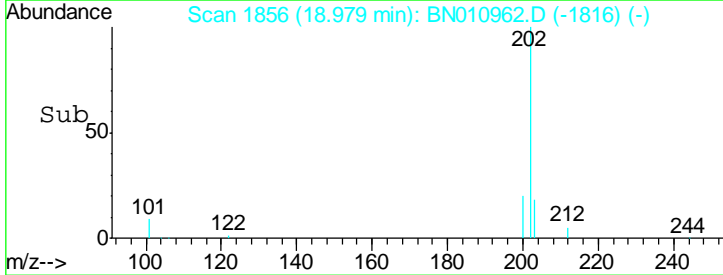
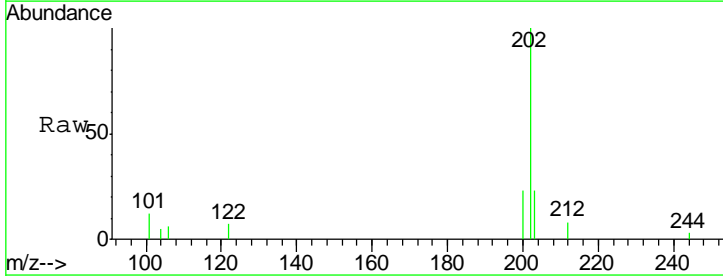
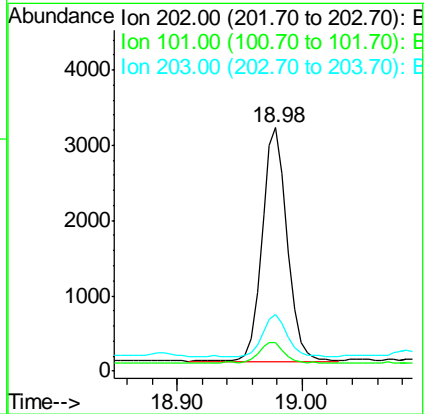
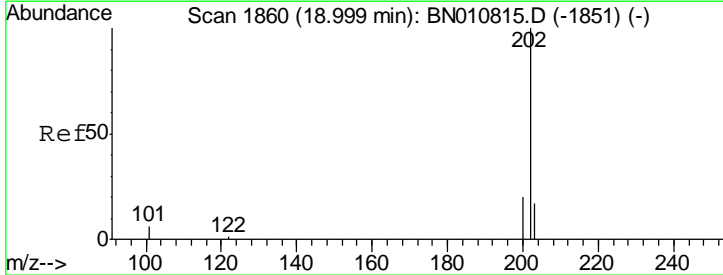
Ion	Ratio	Lower	Upper
212	100		
106	10.8	6.6	10.0#
104	6.4	4.0	6.0#

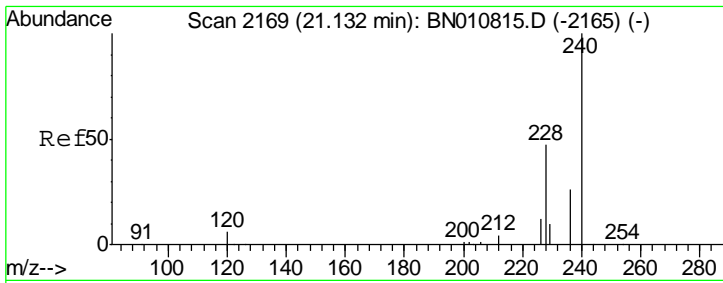


#26
 Fluoranthene
 Concen: 0.106 ng
 RT: 18.98 min Scan# 1856
 Delta R.T. -0.00 min
 Lab File: BN010962.D
 Acq: 18 Jun 2020 20:23

Tgt Ion: 202 Resp: 4304

Ion	Ratio	Lower	Upper
202	100		
101	10.4	5.8	8.6#
203	18.2	13.7	20.5

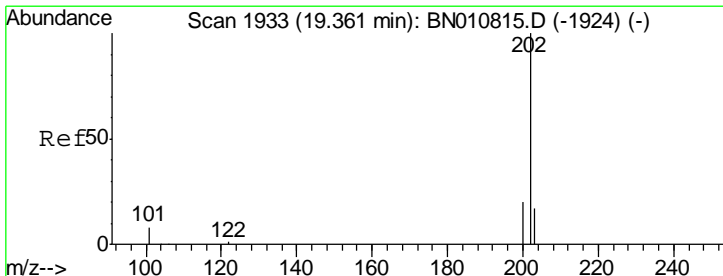
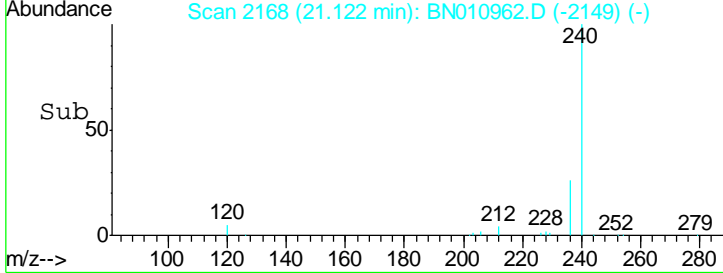
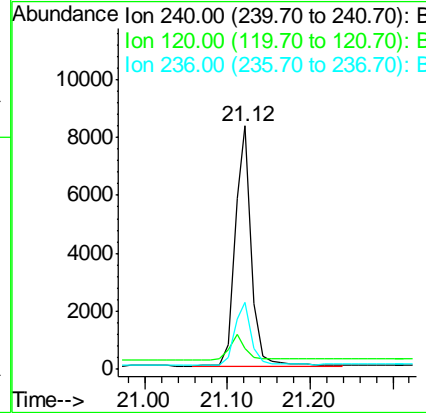
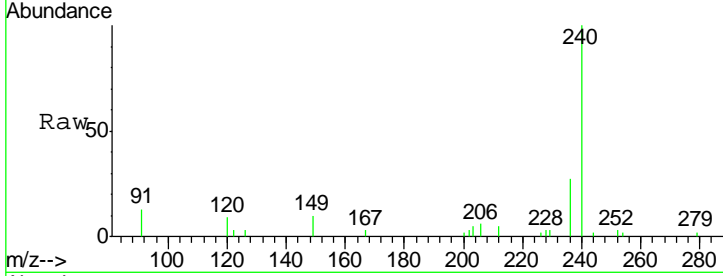




#27
 Chrysene-d12
 Concen: 0.400 ng
 RT: 21.12 min Scan# 2168
 Delta R.T. -0.00 min
 Lab File: BN010962.D
 Acq: 18 Jun 2020 20:23

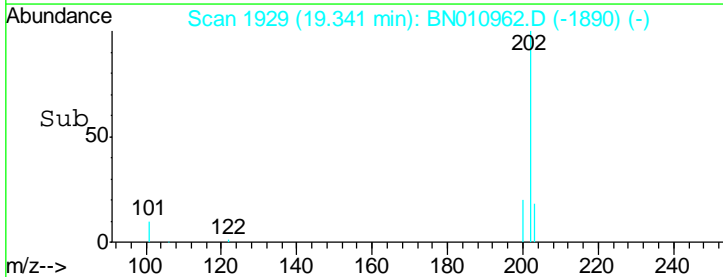
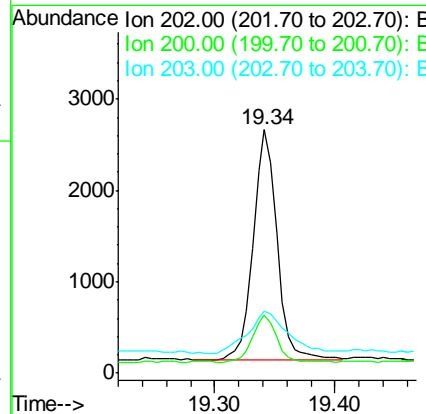
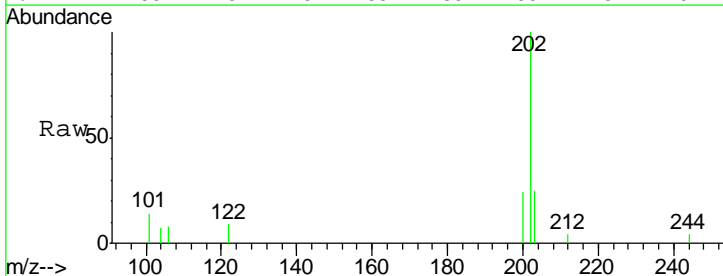
Instrument :
 BNA_N
 ClientSampled :
 MW-27

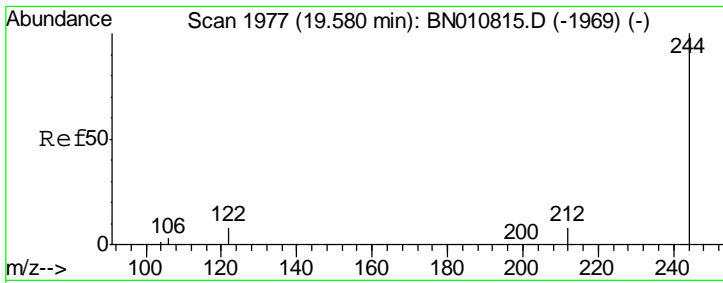
Tgt Ion	Resp	Lower	Upper
240	11398		
120	8.5	7.5	11.3
236	27.5	22.3	33.5



#28
 Pyrene
 Concen: 0.093 ng
 RT: 19.34 min Scan# 1929
 Delta R.T. -0.01 min
 Lab File: BN010962.D
 Acq: 18 Jun 2020 20:23

Tgt Ion	Resp	Lower	Upper
202	3491		
200	20.7	16.4	24.6
203	30.9	14.2	21.4#

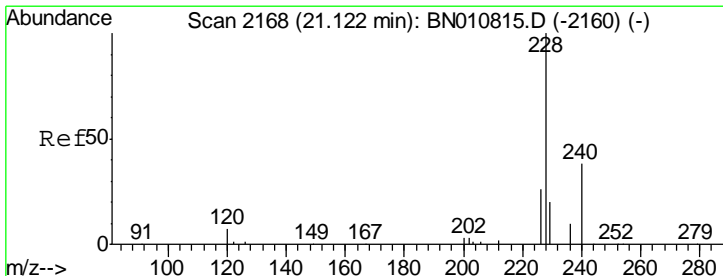
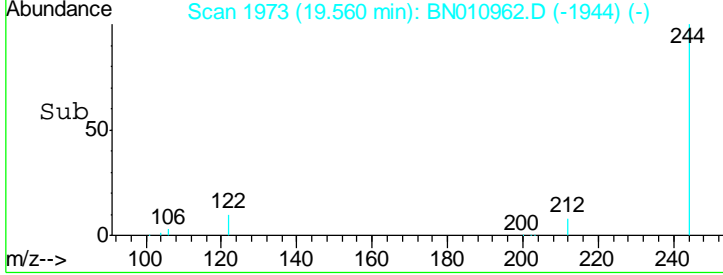
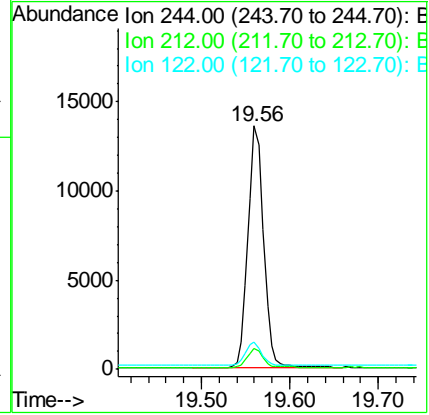
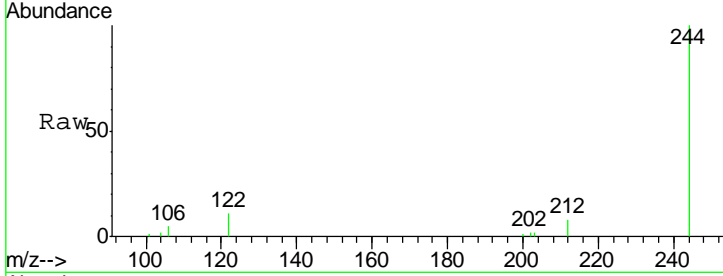




#29
 Terphenyl-d14
 Concen: 0.623 ng
 RT: 19.56 min Scan# 1973
 Delta R.T. -0.01 min
 Lab File: BN010962.D
 Acq: 18 Jun 2020 20:23

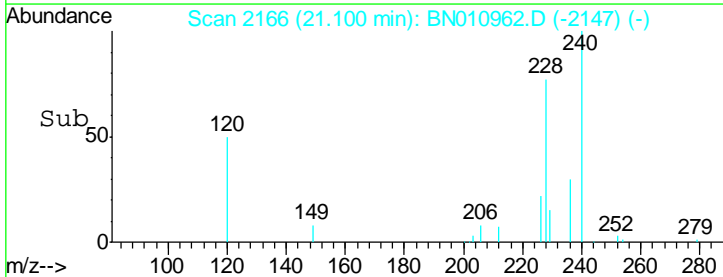
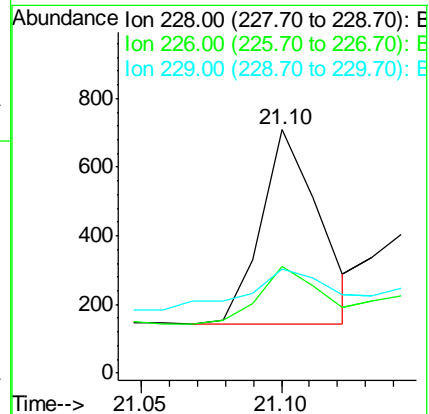
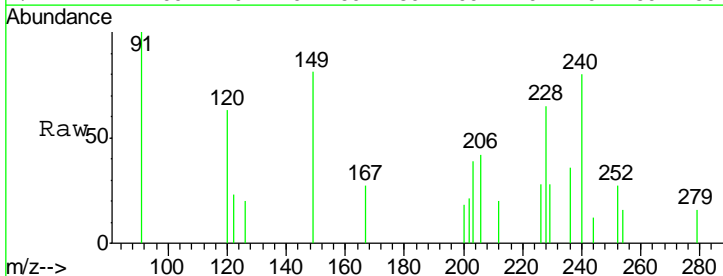
Instrument :
 BNA_N
 ClientSampled :
 MW-27

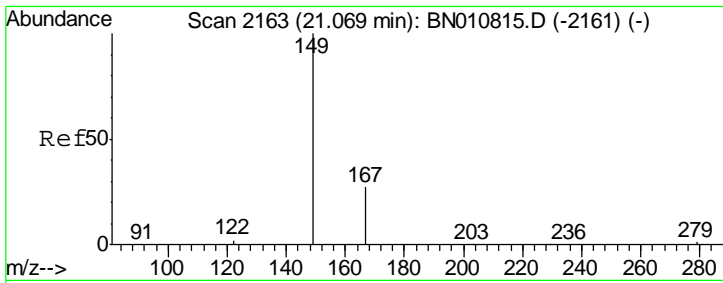
Tgt Ion	Resp	Lower	Upper
244	16627		
212	8.4	7.4	11.2
122	11.3	7.5	11.3#



#30
 Benzo(a)anthracene
 Concen: 0.024 ng
 RT: 21.10 min Scan# 2166
 Delta R.T. -0.00 min
 Lab File: BN010962.D
 Acq: 18 Jun 2020 20:23

Tgt Ion	Resp	Lower	Upper
228	818		
226	43.9	21.3	31.9#
229	42.7	16.6	24.8#

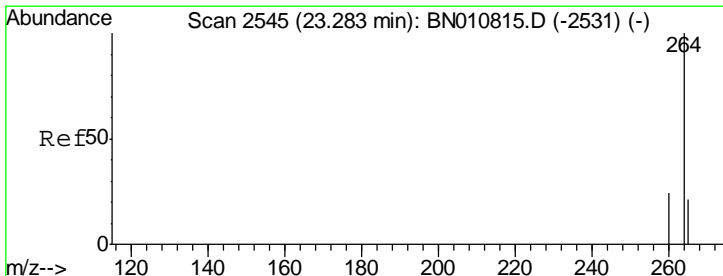
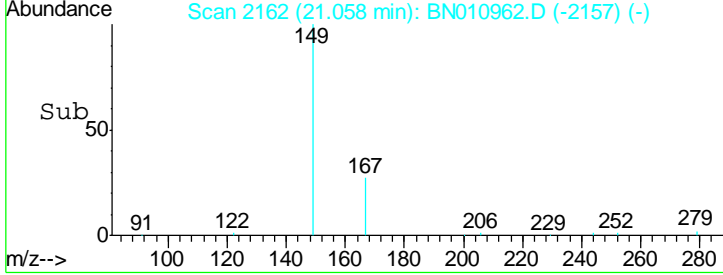
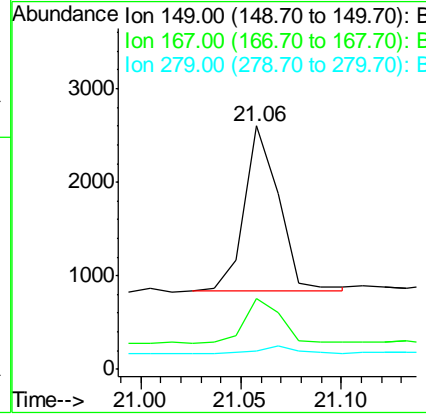
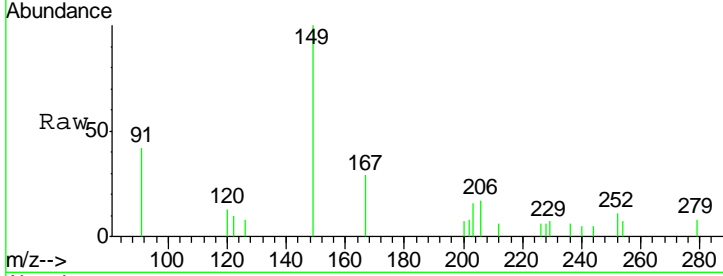




#32
 Bis(2-ethylhexyl)phthalate
 Concen: 0.190 ng
 RT: 21.06 min Scan# 2162
 Delta R.T. -0.00 min
 Lab File: BN010962.D
 Acq: 18 Jun 2020 20:23

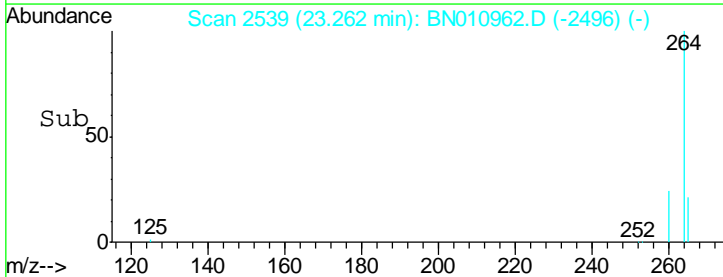
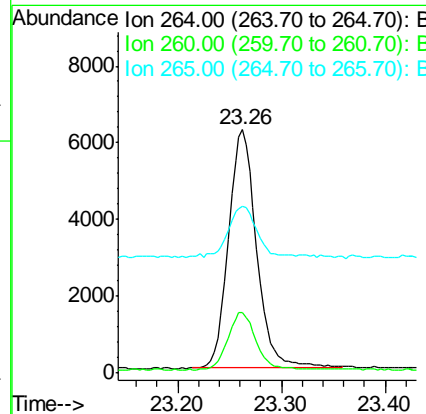
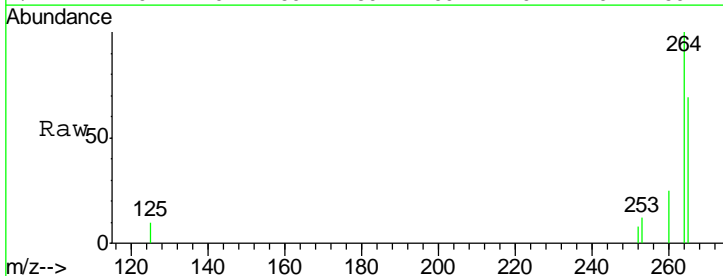
Instrument :
 BNA_N
 ClientSampled :
 MW-27

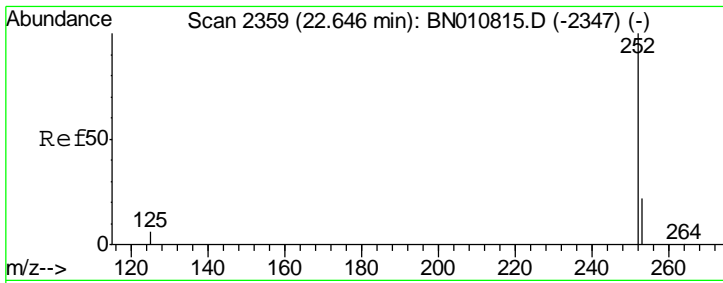
Tgt Ion	Resp	Lower	Upper
149	100		
167	28.9	24.1	36.1
279	4.5	4.6	7.0



#34
 Perylene-d12
 Concen: 0.400 ng
 RT: 23.26 min Scan# 2539
 Delta R.T. -0.00 min
 Lab File: BN010962.D
 Acq: 18 Jun 2020 20:23

Tgt Ion	Resp	Lower	Upper
264	100		
260	24.9	20.4	30.6
265	68.6	75.0	112.4





#35
 Benzo(b)fluoranthene
 Concen: 0.021 ng
 RT: 22.64 min Scan# 2356
 Delta R.T. 0.00 min
 Lab File: BN010962.D
 Acq: 18 Jun 2020 20:23

Instrument :
 BNA_N
ClientSampled :
 MW-27

Tot Ion	252	Resp	849
Ion Ratio	Lower	Upper	
252	100		
253	100.8	22.4	33.6#
125	70.5	9.4	14.0#

