

Data Path : Z:\SVOASRV\HPCHEM1\BNA N\DATA\BN061820\
 Data File : BN010960.D
 Acq On : 18 Jun 2020 19:12
 Operator : CG/JU
 Sample : L3020-21MS
 Misc :
 ALS Vial : 6 Sample Multiplier: 1

Instrument :
 BNA_N
 ClientSampled :
 MW-23MS

Manual Integrations
 APPROVED

mohammad
 6/19/2020 12:58:35 PM

Quant Time: Jun 18 19:43:47 2020
 Quant Method : Z:\SVOASRV\HPCHEM1\BNA N\METHODS\8270-SIM-BN061020.M
 Quant Title : ASP BNA STANDARDS FOR 5 POINT CALIBRATION
 QLast Update : Thu Jun 18 14:14:42 2020
 Response via : Initial Calibration

Internal Standards	R.T.	QIon	Response	Conc	Units	Dev(Min)
1) 1,4-Dichlorobenzene-d4	7.53	152	2447	0.40	ng	0.00
7) Naphthalene-d8	10.29	136	8897	0.40	ng	0.00
13) Acenaphthene-d10	14.16	164	4902	0.40	ng	0.00
19) Phenanthrene-d10	16.91	188	10734	0.40	ng	0.00
27) Chrysene-d12	21.12	240	10255	0.40	ng	0.00
34) Perylene-d12	23.26	264	10923	0.40	ng	0.00

System Monitoring Compounds

4) 2-Fluorophenol	5.19	112	1048	0.22	ng	0.00
5) Phenol-d6	6.74	99	865	0.16	ng	0.00
8) Nitrobenzene-d5	8.67	82	2720	0.41	ng	0.00
11) 2-Methylnaphthalene-d10	11.88	152	5042	0.37	ng	0.00
14) 2,4,6-Tribromophenol	15.66	330	1008	0.57	ng	0.00
15) 2-Fluorobiphenyl	12.78	172	9374	0.48	ng	0.00
25) Fluoranthene-d10	18.95	212	11822	0.40	ng	0.00
29) Terphenyl-d14	19.56	244	14304	0.60	ng	0.00

Target Compounds

Target Compounds	R.T.	QIon	Response	Conc	Units	Qvalue
2) 1,4-Dioxane	3.22	88	347	0.145	ng	# 53
3) n-Nitrosodimethylamine	3.53	42	326	0.234	ng	# 76
6) bis(2-Chloroethyl)ether	6.99	93	1974	0.364	ng	94
9) Naphthalene	10.33	128	7566	0.338	ng	99
10) Hexachlorobutadiene	10.63	225	1430	0.259	ng	# 99
12) 2-Methylnaphthalene	11.96	142	5338	0.357	ng	99
16) Acenaphthylene	13.87	152	7340	0.366	ng	97
17) Acenaphthene	14.21	154	4715	0.344	ng	97
18) Fluorene	15.22	166	6645	0.376	ng	99
20) 4-Bromophenyl-phenylether	16.11	248	2427	0.376	ng	96
21) Hexachlorobenzene	16.22	284	2479	0.368	ng	# 89
22) Pentachlorophenol	16.57	266	2803	1.241	ng	94
23) Phenanthrene	16.95	178	11944	0.407	ng	99
24) Anthracene	17.04	178	10475	0.428	ng	98
26) Fluoranthene	18.98	202	14158	0.425	ng	# 98
28) Pyrene	19.34	202	14390	0.424	ng	99
30) Benzo(a)anthracene	21.10	228	13185	0.437	ng	98
31) Chrysene	21.15	228	12992	0.370	ng	98
32) Bis(2-ethylhexyl)phthalate	21.06	149	6847	0.681	ng	96
33) Indeno(1,2,3-cd)pyrene	25.36	276	14816	0.377	ng	# 96
35) Benzo(b)fluoranthene	22.63	252	13238	0.356	ng	98
36) Benzo(k)fluoranthene	22.67	252	13589m	0.343	ng	
37) Benzo(a)pyrene	23.17	252	11474	0.360	ng	98
38) Dibenzo(a,h)anthracene	25.38	278	12099	0.333	ng	96
39) Benzo(g,h,i)perylene	26.00	276	12929	0.340	ng	96

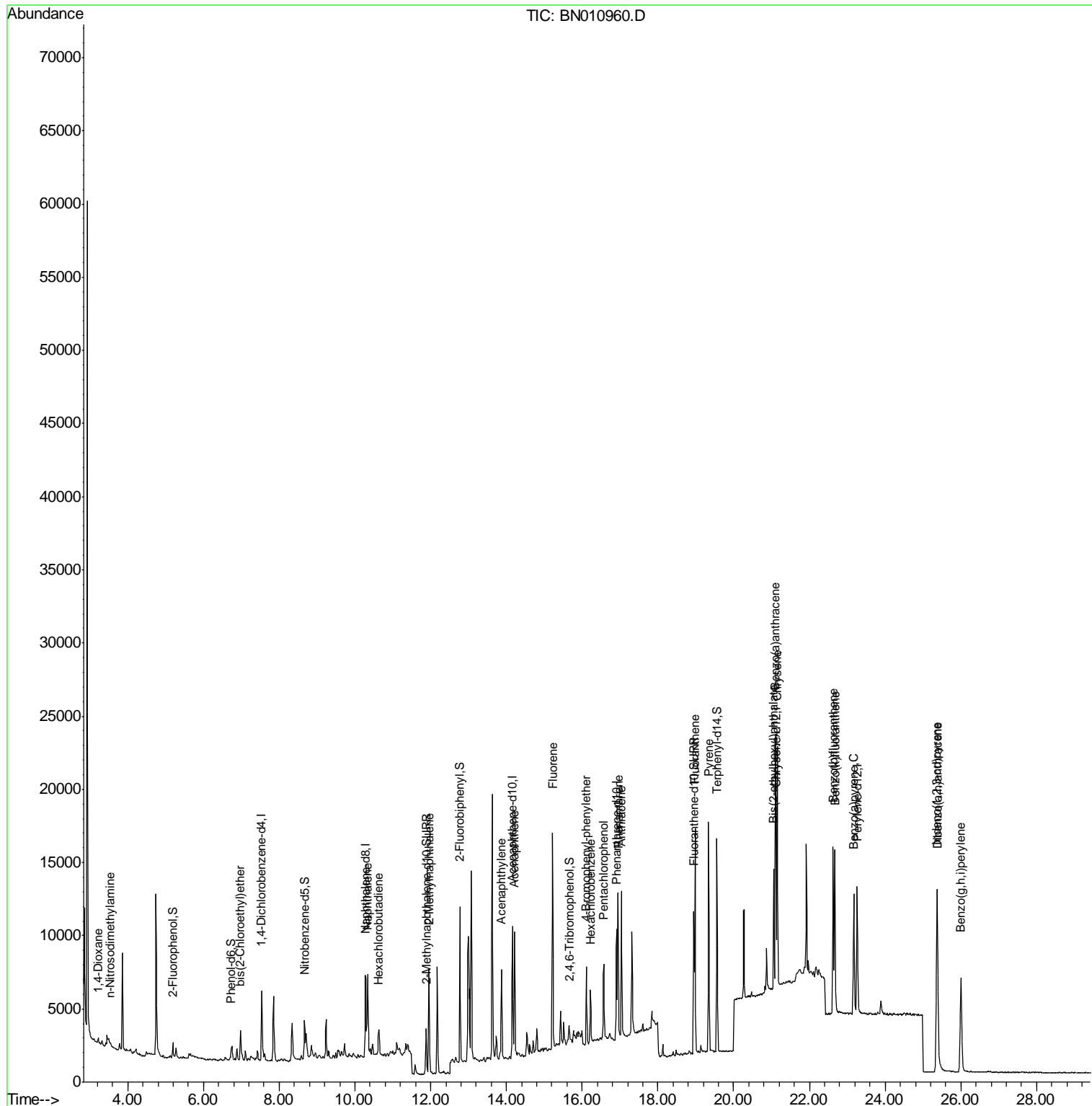
(#) = qualifier out of range (m) = manual integration (+) = signals summed

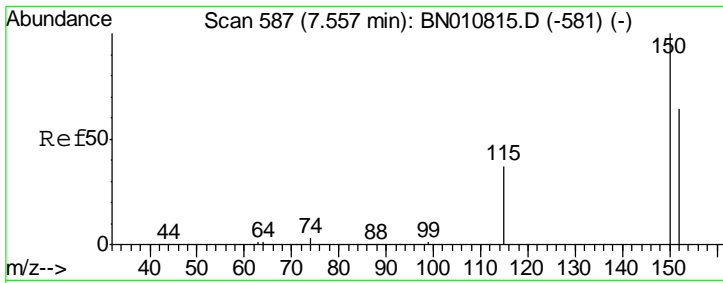
Data Path : Z:\SVOASRV\HPCHEM1\BNA N\DATA\BN061820\
 Data File : BN010960.D
 Acq On : 18 Jun 2020 19:12
 Operator : CG/JU
 Sample : L3020-21MS
 Misc :
 ALS Vial : 6 Sample Multiplier: 1

Instrument :
 BNA_N
 Client Sampled :
 MW-23MS

Manual Integrations
 APPROVED
 mohammad
 6/19/2020 12:58:35 PM

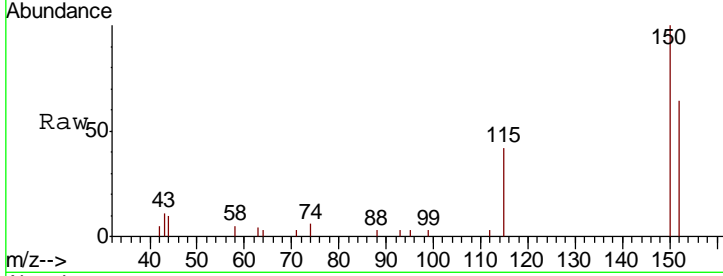
Quant Time: Jun 18 19:43:47 2020
 Quant Method : Z:\SVOASRV\HPCHEM1\BNA N\METHODS\8270-SIM-BN061020.M
 Quant Title : ASP BNA STANDARDS FOR 5 POINT CALIBRATION
 QLast Update : Thu Jun 18 14:14:42 2020
 Response via : Initial Calibration





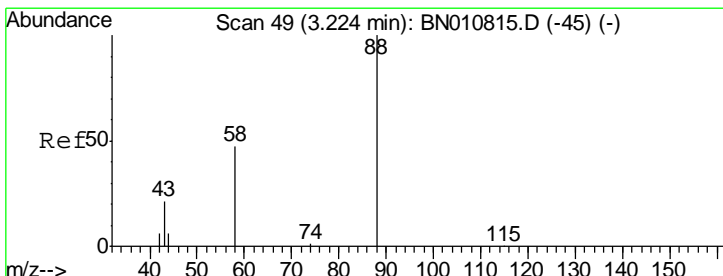
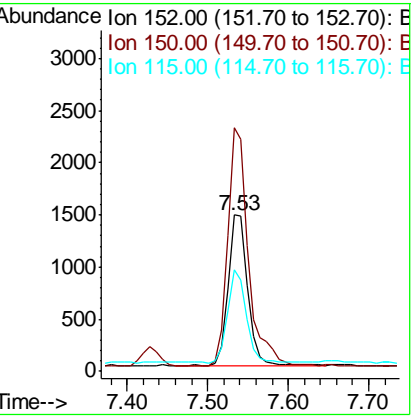
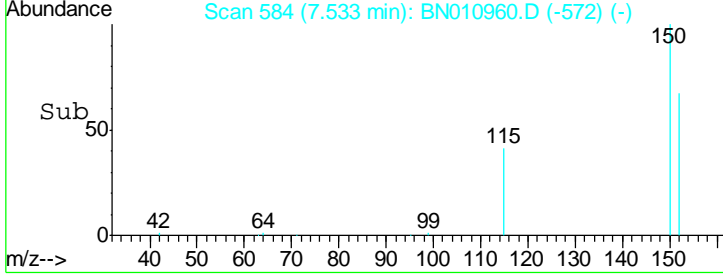
#1
 1,4-Dichlorobenzene-d4
 Concen: 0.400 ng
 RT: 7.53 min Scan# 584
 Delta R.T. -0.00 min
 Lab File: BN010960.D
 Acq: 18 Jun 2020 19:12

Instrument :
 BNA_N
 ClientSampled :
 MW-23MS



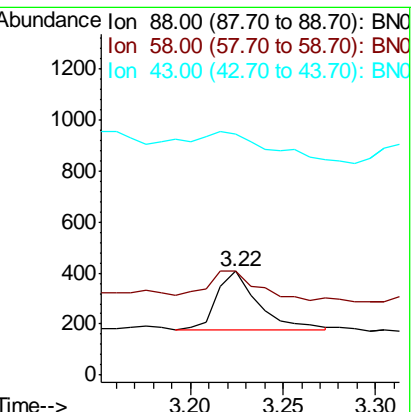
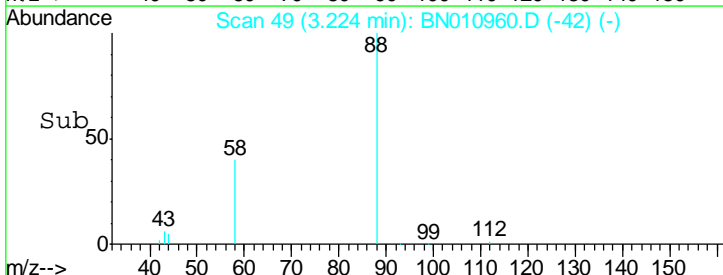
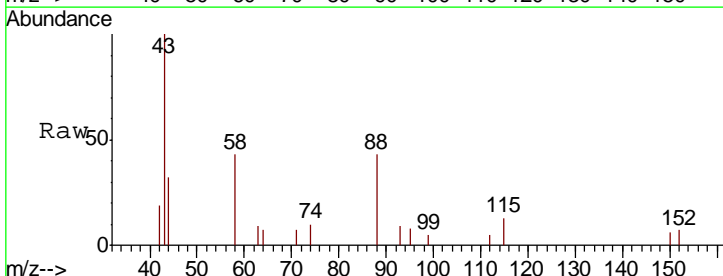
Tgt Ion	Resp	Lower	Upper
152	100		
150	155.9	123.8	185.6
115	65.1	49.2	73.8

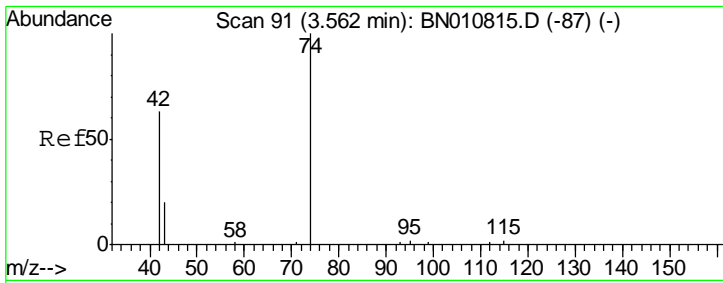
Manual Integrations
APPROVED
 mohammad
 6/19/2020 12:58:35 PM



#2
 1,4-Dioxane
 Concen: 0.145 ng
 RT: 3.22 min Scan# 49
 Delta R.T. 0.01 min
 Lab File: BN010960.D
 Acq: 18 Jun 2020 19:12

Tgt Ion	Resp	Lower	Upper
88	100		
58	57.6	38.2	57.4#
43	77.5	15.1	22.7#





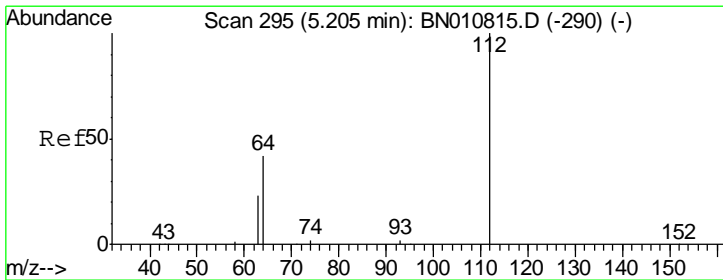
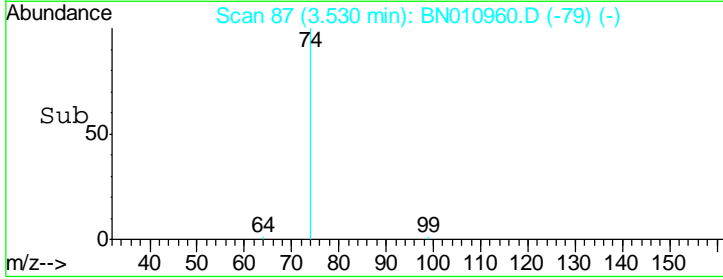
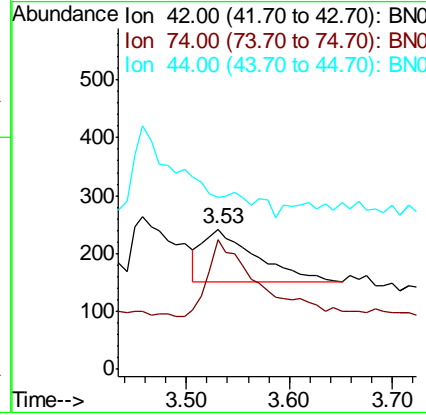
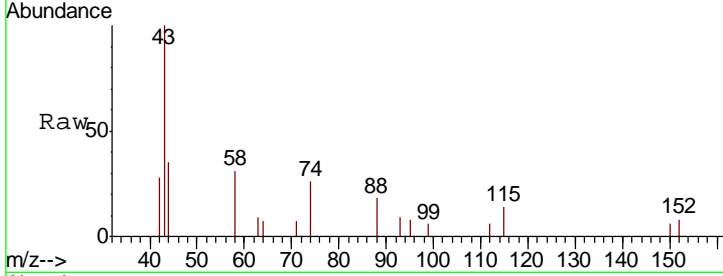
#3
 n-Nitrosodimethylamine
 Concen: 0.234 ng
 RT: 3.53 min Scan# 87
 Delta R.T. -0.03 min
 Lab File: BN010960.D
 Acq: 18 Jun 2020 19:12

Instrument :
 BNA_N
ClientSampled :
 MW-23MS

Tgt Ion	Resp	Lower	Upper
42	100		
74	141.7	140.7	211.1
44	0.0	1.4	2.2#

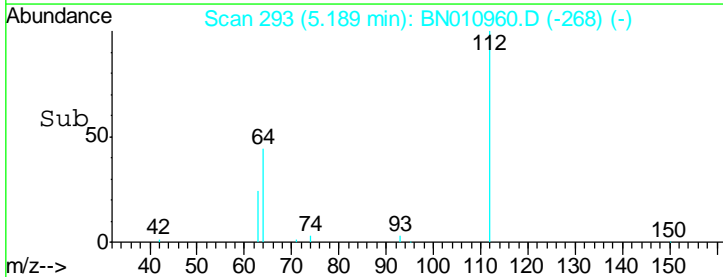
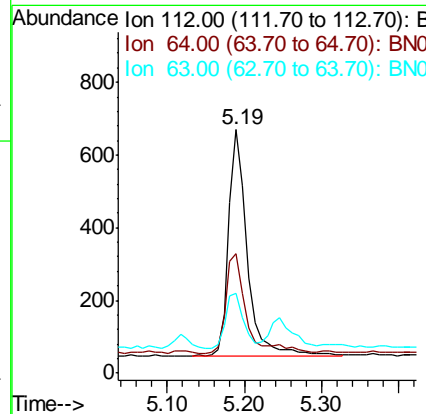
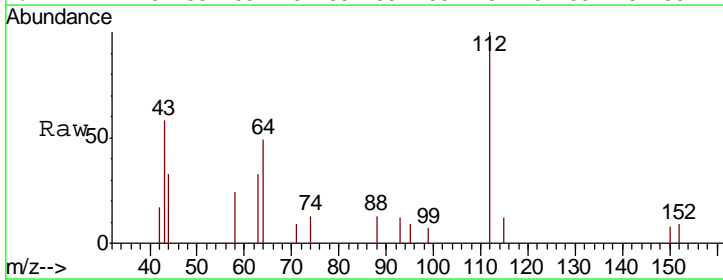
Manual Integrations
APPROVED

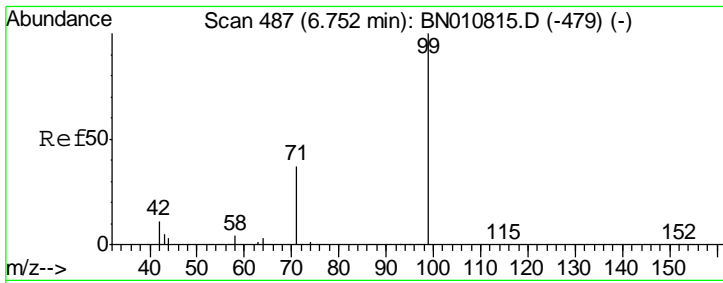
mohammad
 6/19/2020 12:58:35 PM



#4
 2-Fluorophenol
 Concen: 0.222 ng
 RT: 5.19 min Scan# 293
 Delta R.T. -0.00 min
 Lab File: BN010960.D
 Acq: 18 Jun 2020 19:12

Tgt Ion	Resp	Lower	Upper
112	100		
64	49.3	37.4	56.0
63	23.5	22.2	33.4





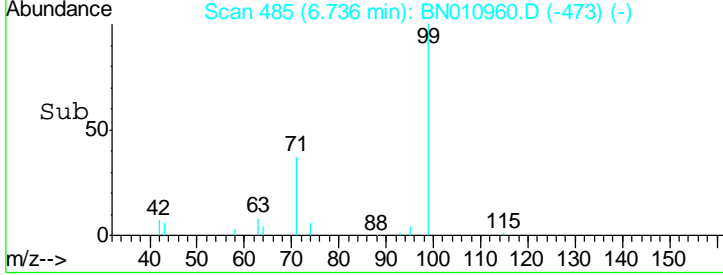
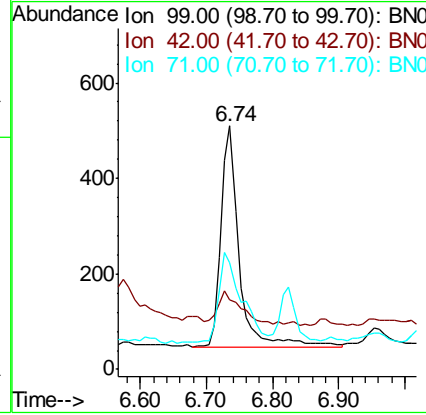
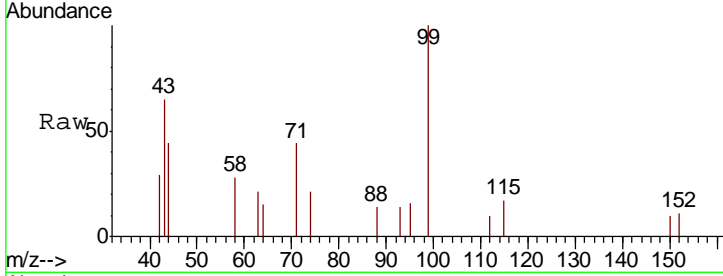
#5
 Phenol-d6
 Concen: 0.155 ng
 RT: 6.74 min Scan# 485
 Delta R.T. -0.00 min
 Lab File: BN010960.D
 Acq: 18 Jun 2020 19:12

Instrument :
 BNA_N
ClientSampled :
 MW-23MS

Tgt Ion	Resp	Lower	Upper
99	865		
99	100		
42	18.6	11.1	16.7#
71	53.9	31.4	47.2#

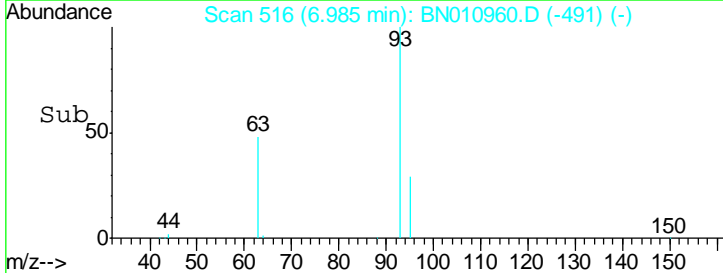
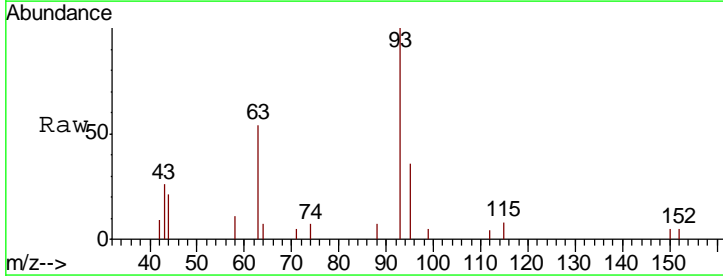
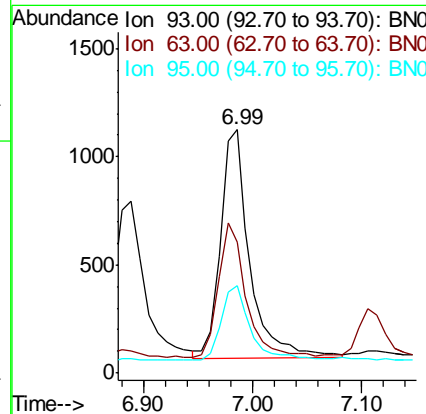
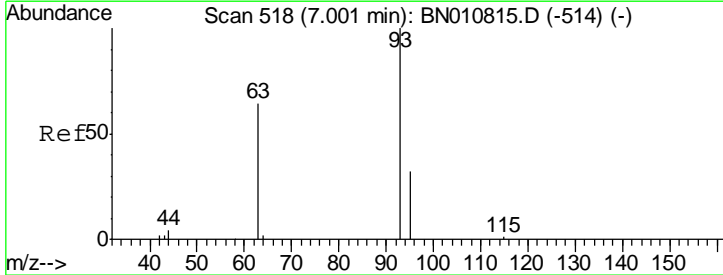
Manual Integrations
APPROVED

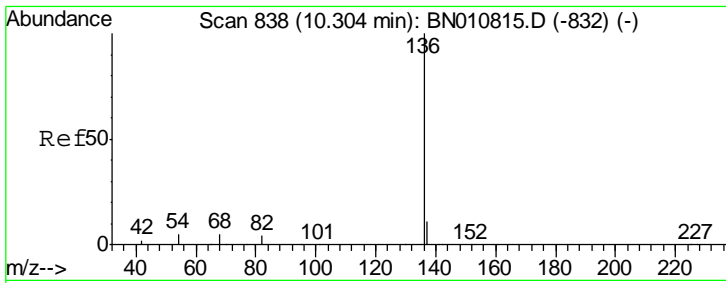
mohammad
 6/19/2020 12:58:35 PM



#6
 bis(2-Chloroethyl)ether
 Concen: 0.364 ng
 RT: 6.99 min Scan# 516
 Delta R.T. -0.00 min
 Lab File: BN010960.D
 Acq: 18 Jun 2020 19:12

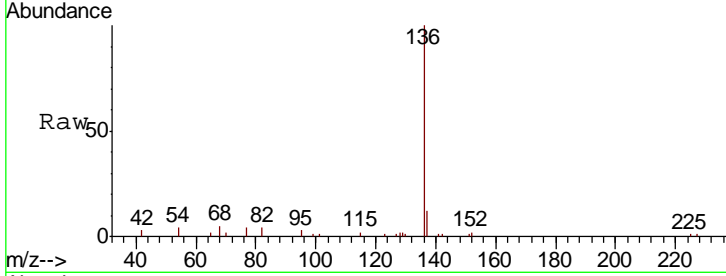
Tgt Ion	Resp	Lower	Upper
93	1974		
93	100		
63	55.2	49.4	74.2
95	33.0	26.7	40.1





#7
 Naphthalene-d8
 Concen: 0.400 ng
 RT: 10.29 min Scan# 837
 Delta R.T. -0.00 min
 Lab File: BN010960.D
 Acq: 18 Jun 2020 19:12

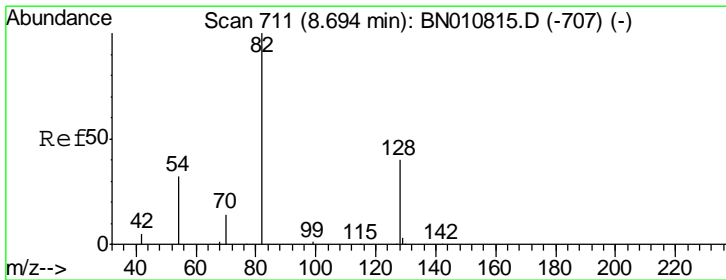
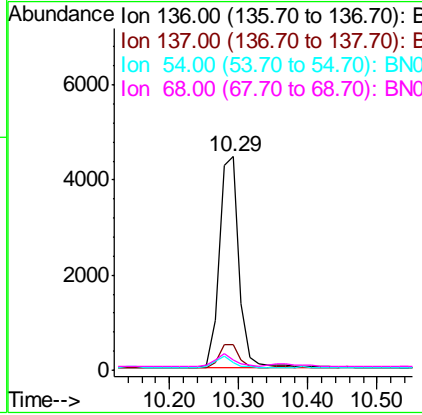
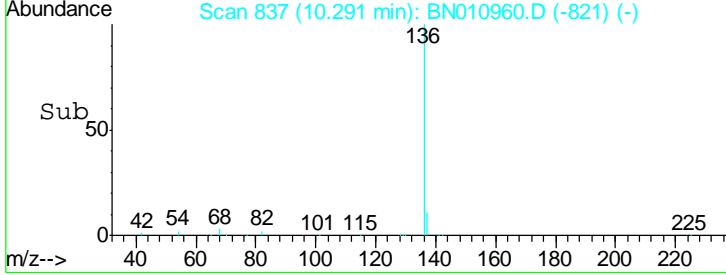
Instrument :
 BNA_N
ClientSampled :
 MW-23MS



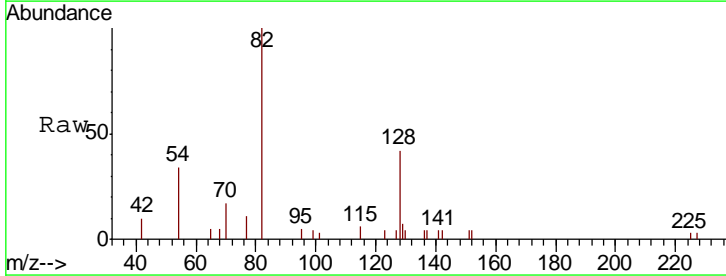
Tgt Ion: 136 Resp: 8897

Ion	Ratio	Lower	Upper
136	100		
137	11.7	9.7	14.5
54	3.7	4.9	7.3#
68	4.9	4.7	7.1

Manual Integrations
APPROVED
 mohammad
 6/19/2020 12:58:35 PM

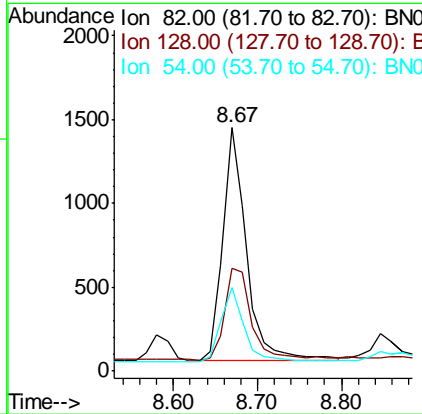
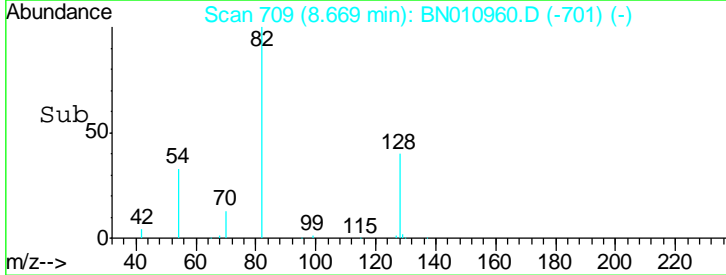


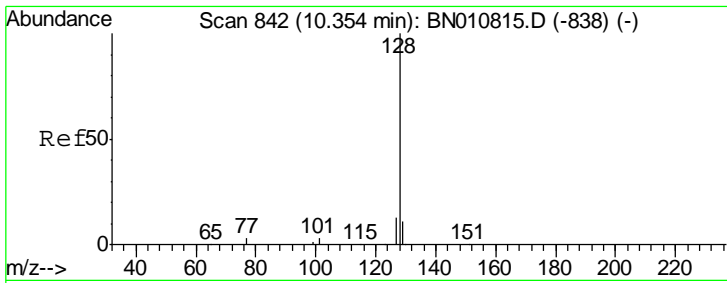
#8
 Nitrobenzene-d5
 Concen: 0.413 ng
 RT: 8.67 min Scan# 709
 Delta R.T. -0.00 min
 Lab File: BN010960.D
 Acq: 18 Jun 2020 19:12



Tgt Ion: 82 Resp: 2720

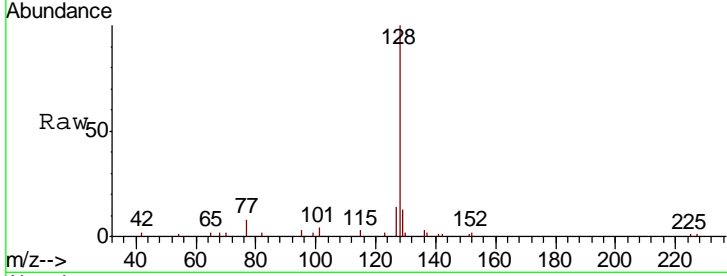
Ion	Ratio	Lower	Upper
82	100		
128	42.5	35.4	53.0
54	34.3	28.2	42.4





#9
 Naphthalene
 Concen: 0.338 ng
 RT: 10.33 min Scan# 840
 Delta R.T. -0.00 min
 Lab File: BN010960.D
 Acq: 18 Jun 2020 19:12

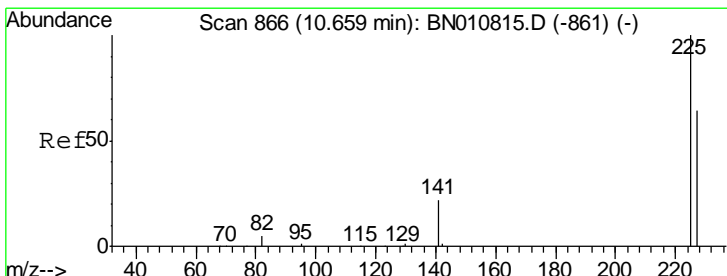
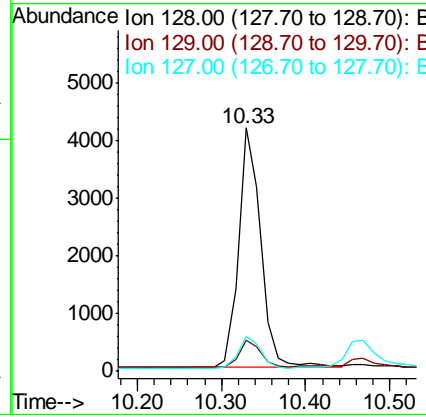
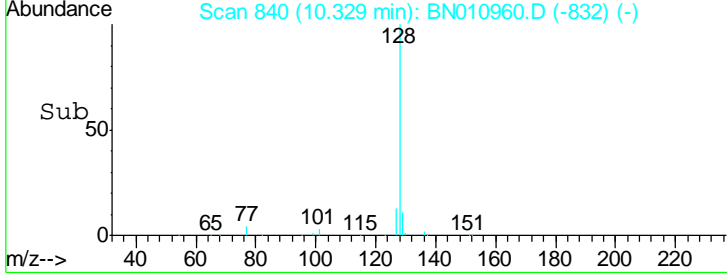
Instrument :
 BNA_N
ClientSampled :
 MW-23MS



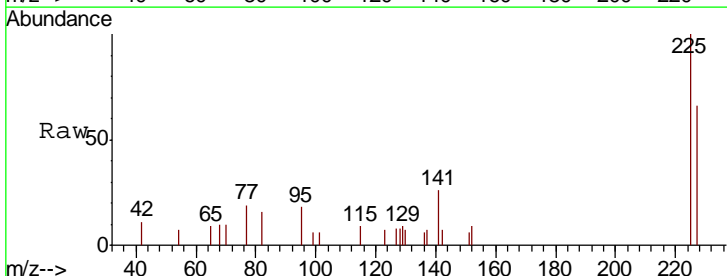
Tgt Ion: 128 Resp: 7566

Ion	Ratio	Lower	Upper
128	100		
129	13.0	9.6	14.4
127	14.4	11.4	17.2

Manual Integrations
APPROVED
 mohammad
 6/19/2020 12:58:35 PM

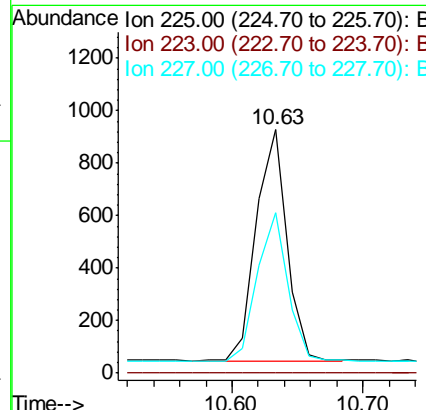
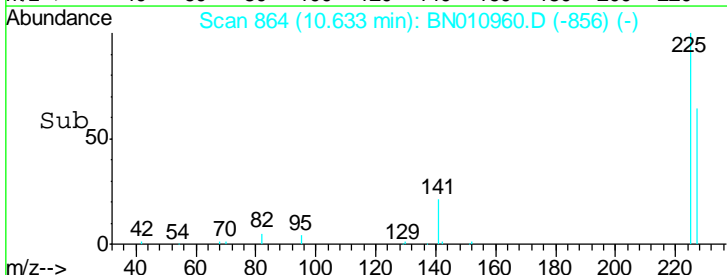


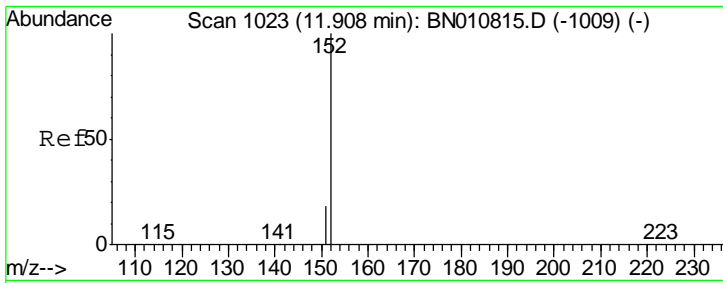
#10
 Hexachlorobutadiene
 Concen: 0.259 ng
 RT: 10.63 min Scan# 864
 Delta R.T. -0.00 min
 Lab File: BN010960.D
 Acq: 18 Jun 2020 19:12



Tgt Ion: 225 Resp: 1430

Ion	Ratio	Lower	Upper
225	100		
223	0.0	0.0	0.0
227	63.7	50.5	75.7





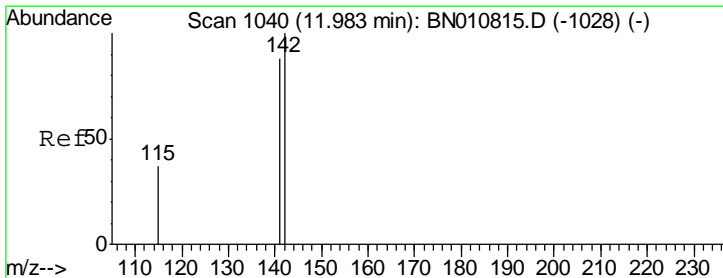
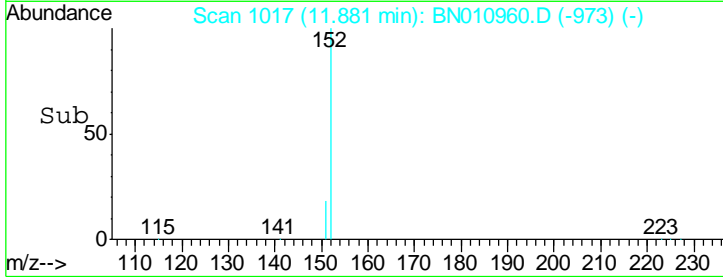
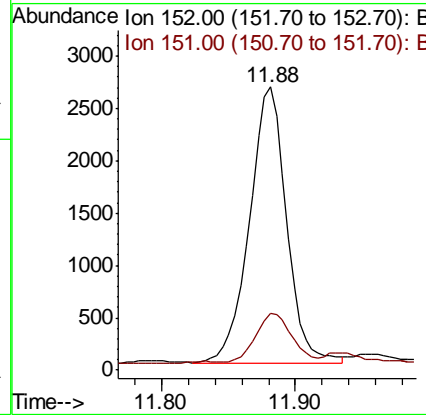
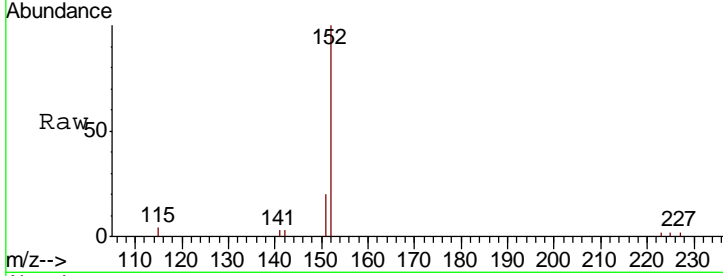
#11
 2-Methylnaphthalene-d10
 Concen: 0.365 ng
 RT: 11.88 min Scan# 1017
 Delta R.T. -0.00 min
 Lab File: BN010960.D
 Acq: 18 Jun 2020 19:12

Instrument :
 BNA_N
ClientSampled :
 MW-23MS

Tgt Ion	Resp	Lower	Upper
152	100		
151	17.5	15.3	22.9

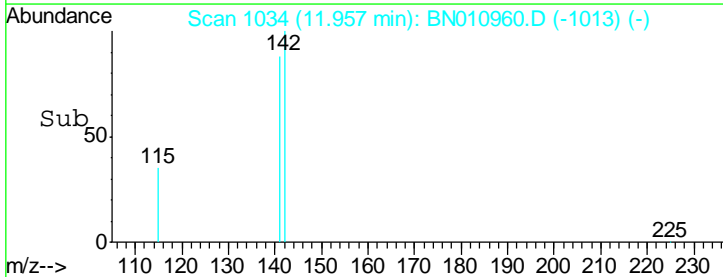
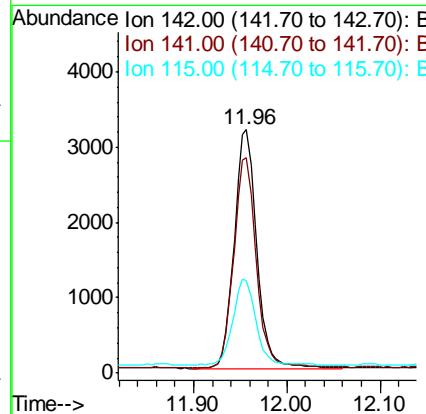
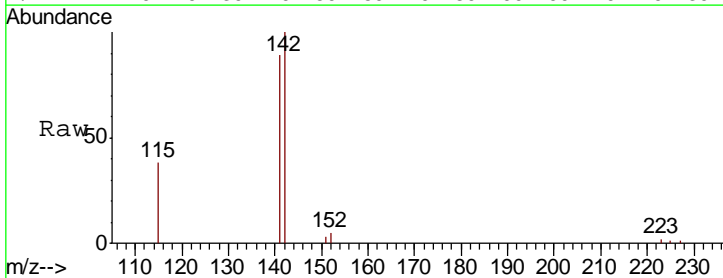
Manual Integrations
APPROVED

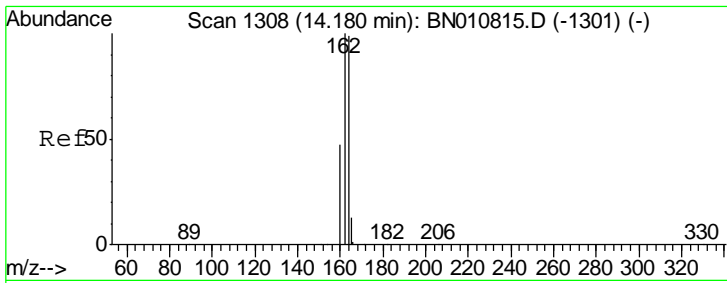
mohammad
 6/19/2020 12:58:35 PM



#12
 2-Methylnaphthalene
 Concen: 0.357 ng
 RT: 11.96 min Scan# 1034
 Delta R.T. -0.00 min
 Lab File: BN010960.D
 Acq: 18 Jun 2020 19:12

Tgt Ion	Resp	Lower	Upper
142	100		
141	88.6	70.8	106.2
115	37.8	31.5	47.3





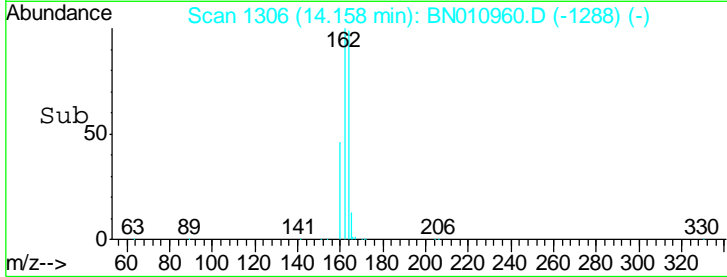
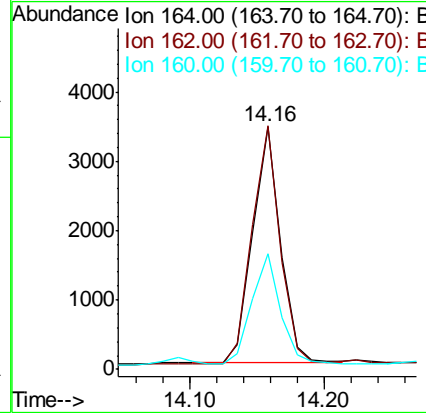
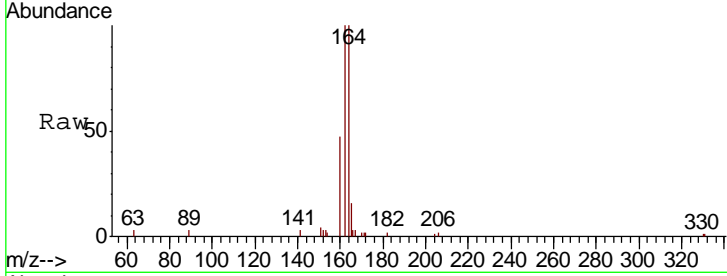
#13
 Acenaphthene-d10
 Concen: 0.400 ng
 RT: 14.16 min Scan# 1306
 Delta R.T. -0.00 min
 Lab File: BN010960.D
 Acq: 18 Jun 2020 19:12

Instrument :
 BNA_N
 ClientSampled :
 MW-23MS

Tgt Ion	Resp	Lower	Upper
164	100		
162	100.3	81.0	121.6
160	47.5	38.9	58.3

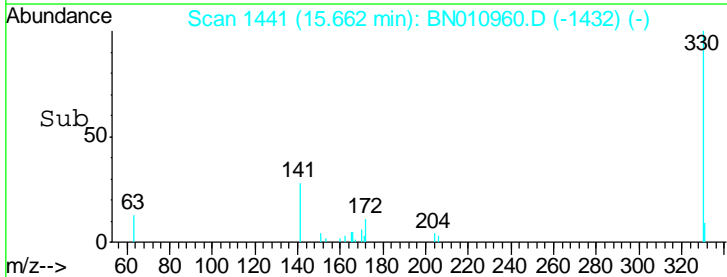
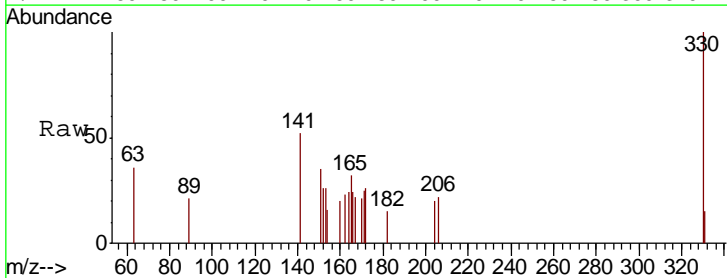
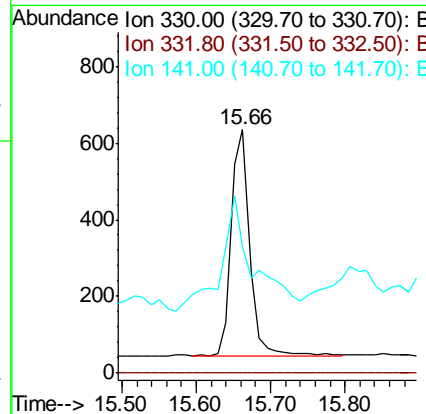
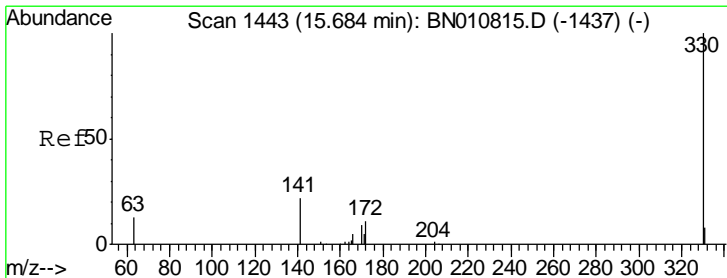
Manual Integrations
 APPROVED

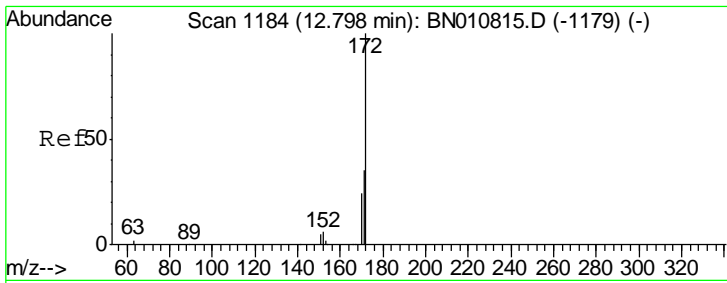
mohammad
 6/19/2020 12:58:35 PM



#14
 2,4,6-Tribromophenol
 Concen: 0.575 ng
 RT: 15.66 min Scan# 1441
 Delta R.T. -0.00 min
 Lab File: BN010960.D
 Acq: 18 Jun 2020 19:12

Tgt Ion	Resp	Lower	Upper
330	100		
332	0.0	0.0	0.0
141	66.8	33.2	49.8#





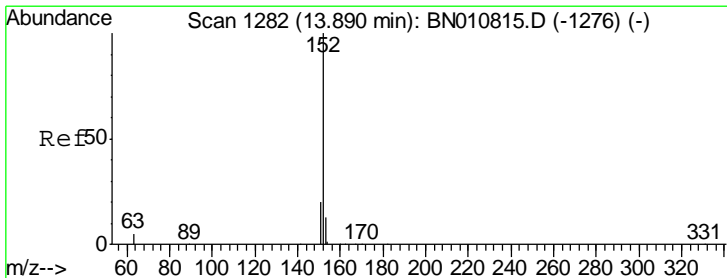
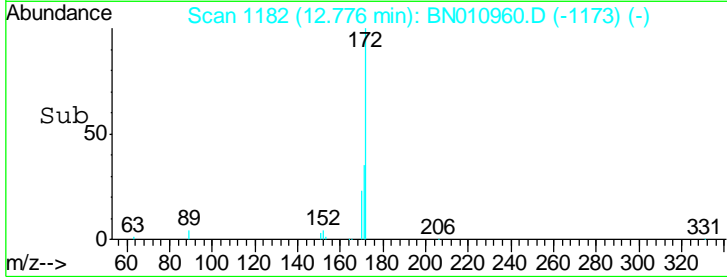
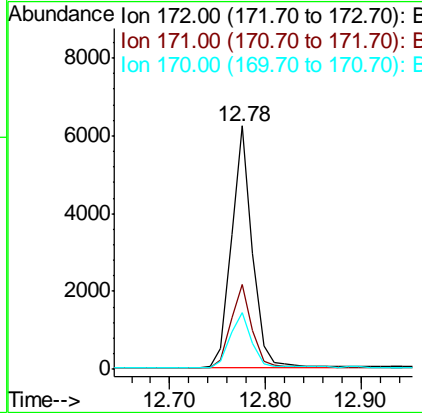
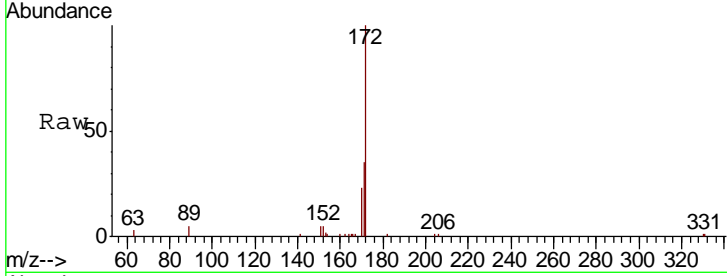
#15
 2-Fluorobiphenyl
 Concen: 0.485 ng
 RT: 12.78 min Scan# 1182
 Delta R.T. -0.00 min
 Lab File: BN010960.D
 Acq: 18 Jun 2020 19:12

Instrument :
 BNA_N
 ClientSampled :
 MW-23MS

Tgt Ion	Resp	Lower	Upper
172	100		
171	35.1	28.5	42.7
170	23.1	19.7	29.5

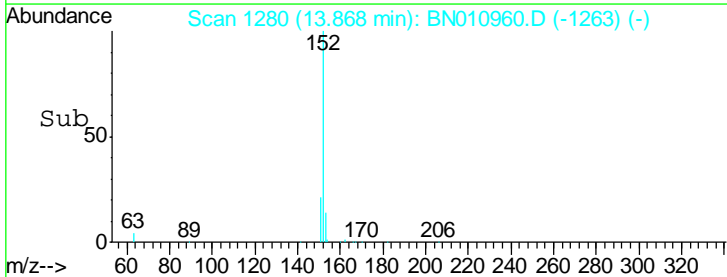
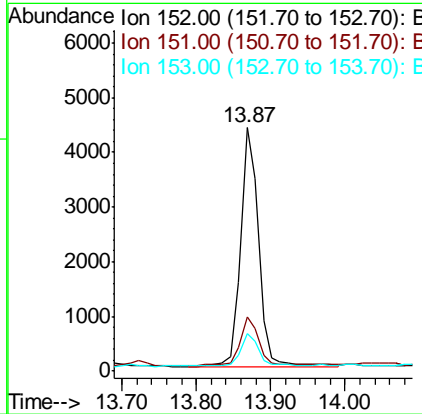
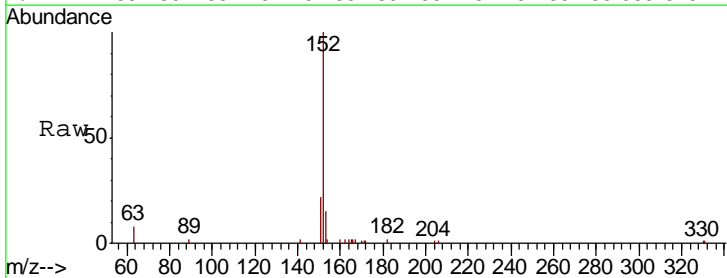
Manual Integrations
 APPROVED

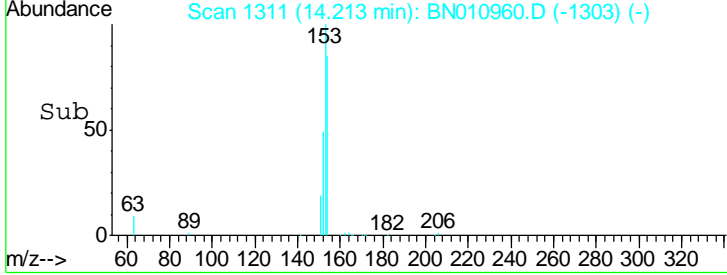
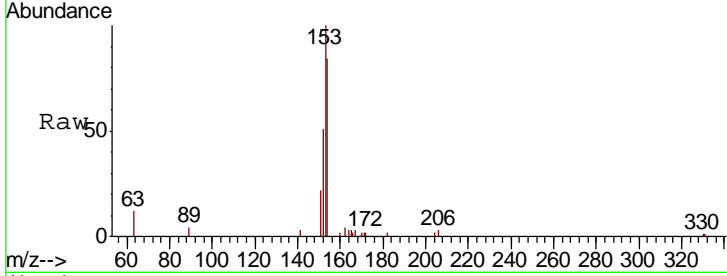
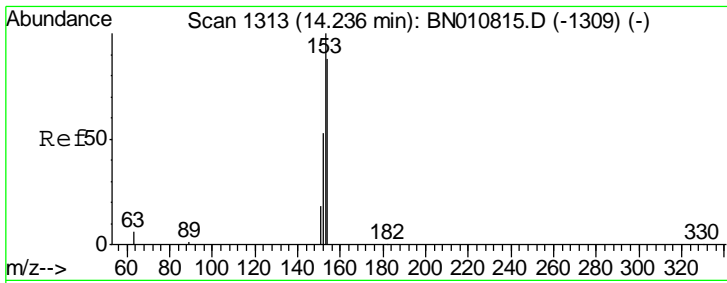
mohammad
 6/19/2020 12:58:35 PM



#16
 Acenaphthylene
 Concen: 0.366 ng
 RT: 13.87 min Scan# 1280
 Delta R.T. -0.01 min
 Lab File: BN010960.D
 Acq: 18 Jun 2020 19:12

Tgt Ion	Resp	Lower	Upper
152	100		
151	20.6	15.6	23.4
153	14.8	10.6	16.0



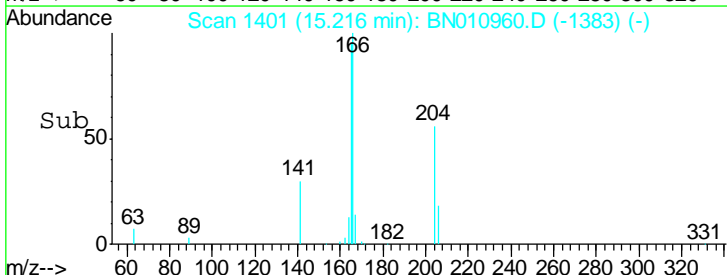
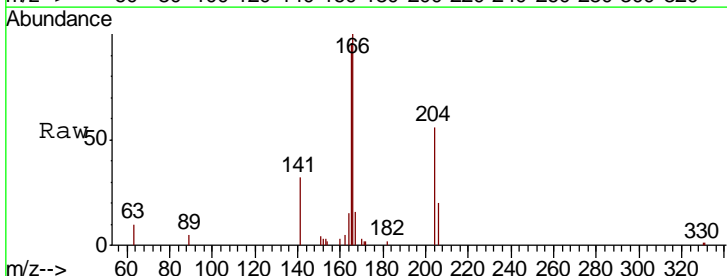
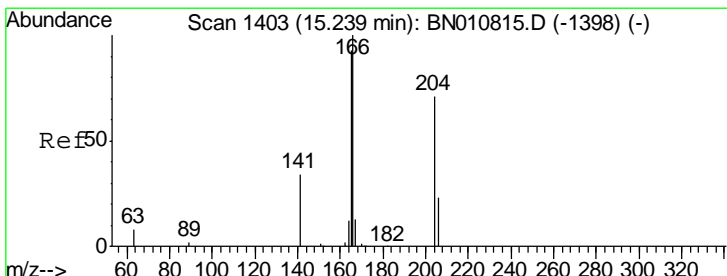
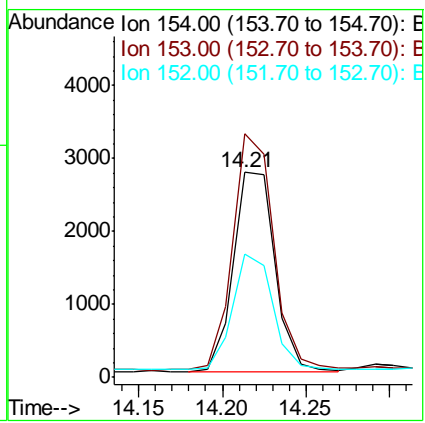


#17
 Acenaphthene
 Concen: 0.344 ng
 RT: 14.21 min Scan# 1311
 Delta R.T. -0.01 min
 Lab File: BN010960.D
 Acq: 18 Jun 2020 19:12

Tgt Ion	Resp	Lower	Upper
154	100		
153	117.9	91.8	137.6
152	56.3	47.6	71.4

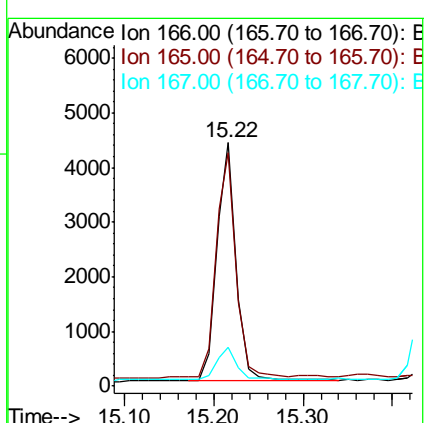
Instrument :
 BNA_N
 ClientSampled :
 MW-23MS

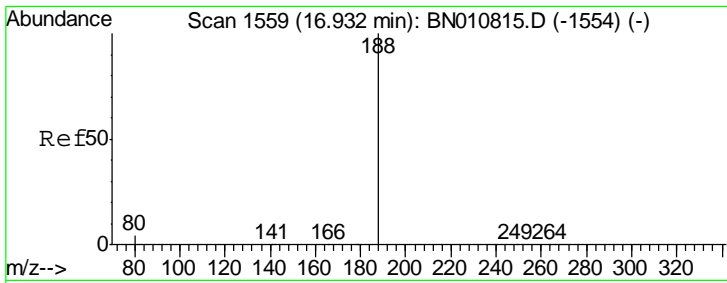
Manual Integrations
 APPROVED
 mohammad
 6/19/2020 12:58:35 PM



#18
 Fluorene
 Concen: 0.376 ng
 RT: 15.22 min Scan# 1401
 Delta R.T. -0.00 min
 Lab File: BN010960.D
 Acq: 18 Jun 2020 19:12

Tgt Ion	Resp	Lower	Upper
166	100		
165	97.6	77.2	115.8
167	14.6	10.7	16.1



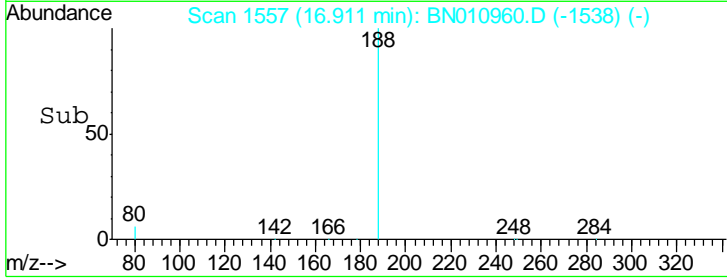
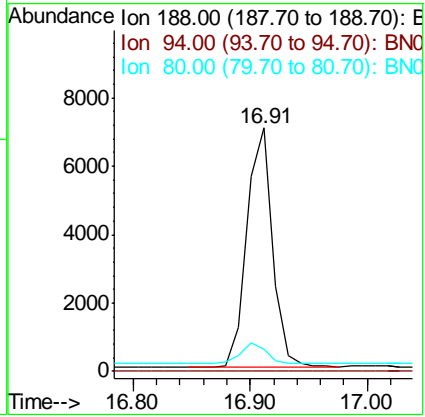
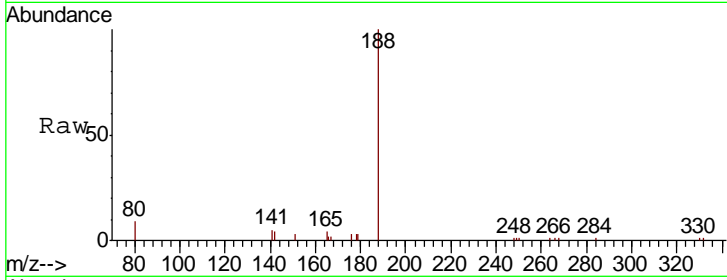


#19
 Phenanthrene-d10
 Concen: 0.400 ng
 RT: 16.91 min Scan# 1557
 Delta R.T. -0.00 min
 Lab File: BN010960.D
 Acq: 18 Jun 2020 19:12

Instrument :
 BNA_N
ClientSampled :
 MW-23MS

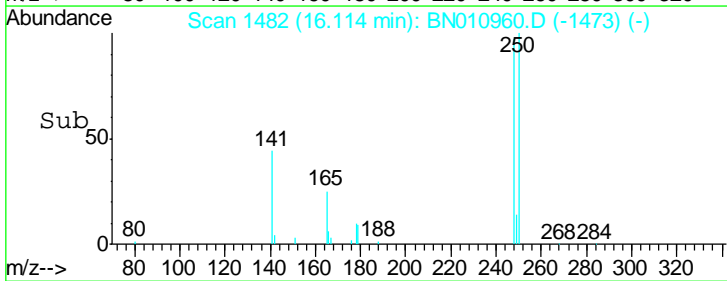
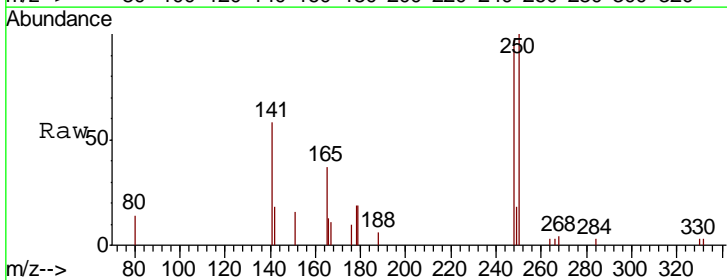
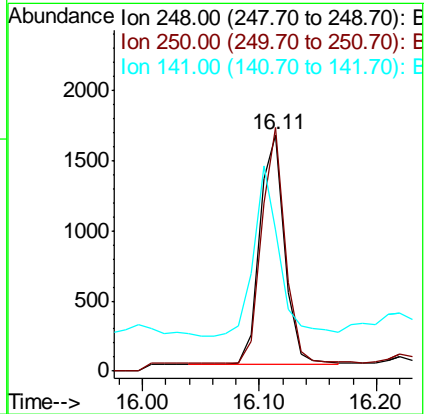
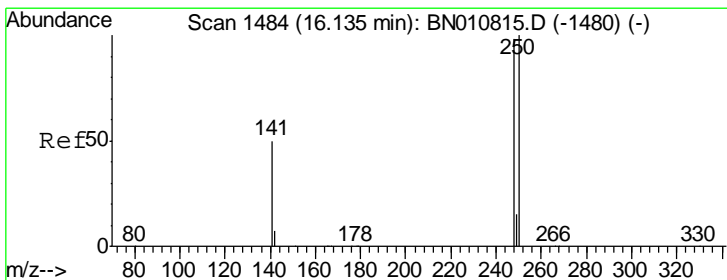
Tgt Ion	Resp	Lower	Upper
188	10734		
188	100		
94	0.0	0.0	0.0
80	9.2	4.5	6.7#

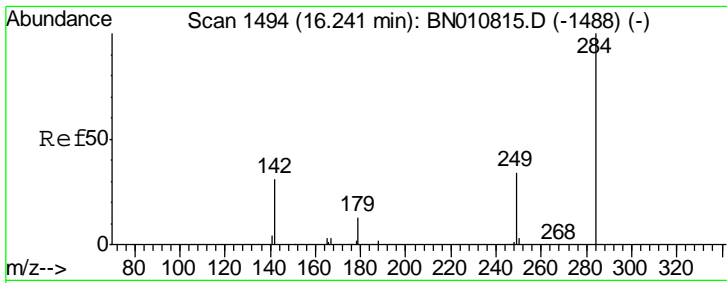
Manual Integrations
APPROVED
 mohammad
 6/19/2020 12:58:35 PM



#20
 4-Bromophenyl-phenylether
 Concen: 0.376 ng
 RT: 16.11 min Scan# 1482
 Delta R.T. -0.00 min
 Lab File: BN010960.D
 Acq: 18 Jun 2020 19:12

Tgt Ion	Resp	Lower	Upper
248	2427		
248	100		
250	103.1	81.8	122.8
141	59.9	42.6	64.0



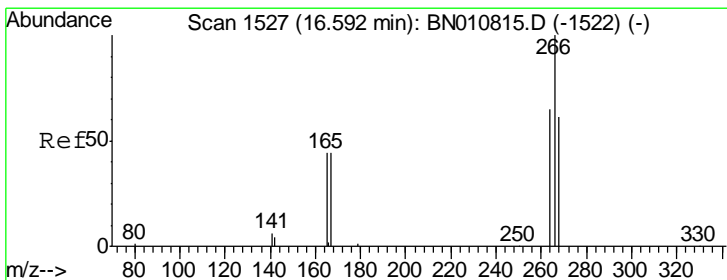
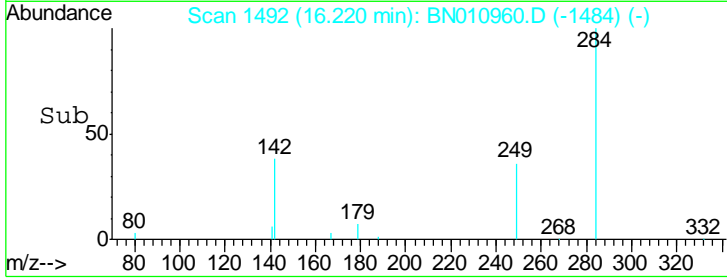
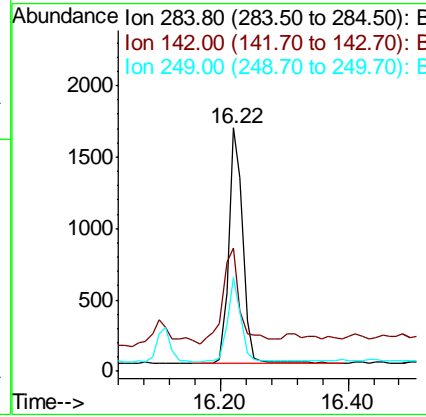
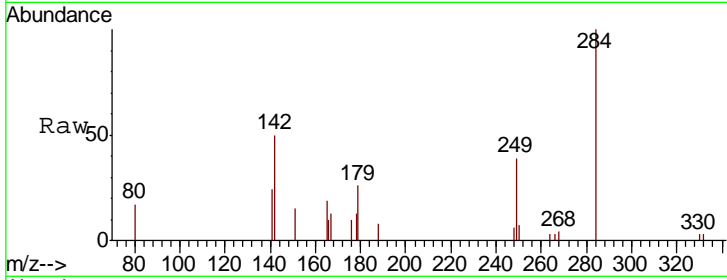


#21
 Hexachlorobenzene
 Concen: 0.368 ng
 RT: 16.22 min Scan# 1492
 Delta R.T. -0.01 min
 Lab File: BN010960.D
 Acq: 18 Jun 2020 19:12

Instrument :
 BNA_N
 ClientSampled :
 MW-23MS

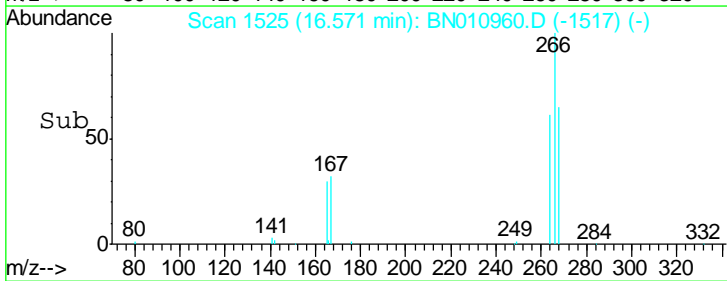
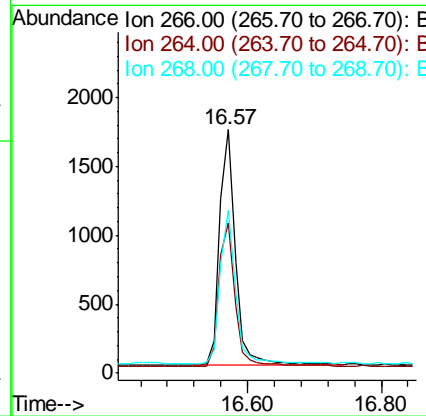
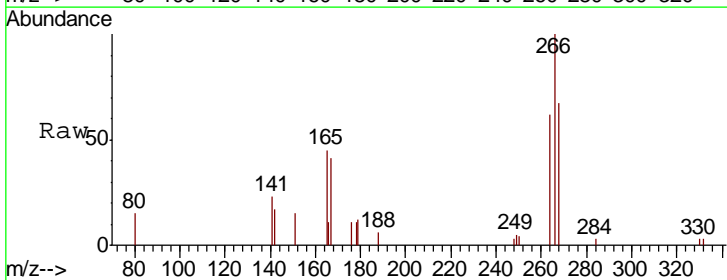
Tgt Ion	Resp	Lower	Upper
284	2479		
142	51.2	31.0	46.4
249	33.6	27.1	40.7

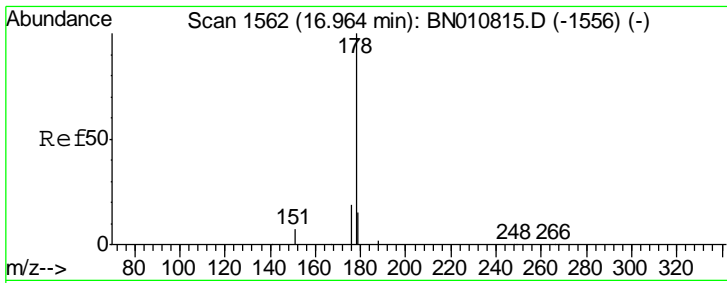
Manual Integrations
APPROVED
 mohammad
 6/19/2020 12:58:35 PM



#22
 Pentachlorophenol
 Concen: 1.241 ng
 RT: 16.57 min Scan# 1525
 Delta R.T. -0.01 min
 Lab File: BN010960.D
 Acq: 18 Jun 2020 19:12

Tgt Ion	Resp	Lower	Upper
266	2803		
264	61.9	54.8	82.2
268	67.1	55.9	83.9





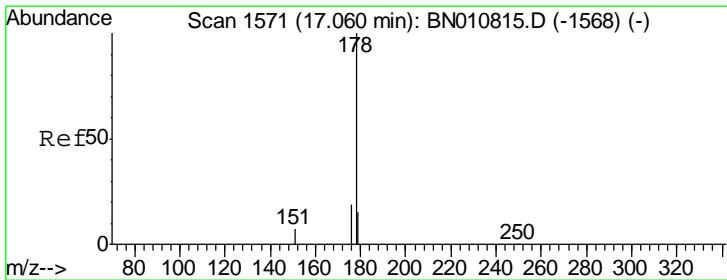
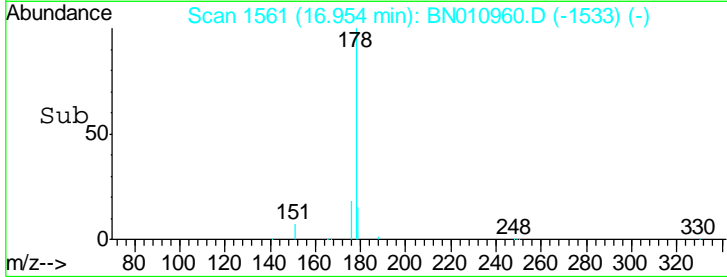
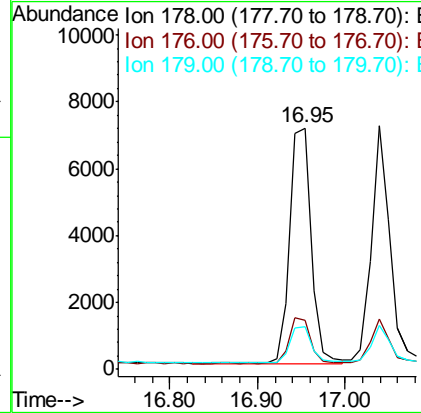
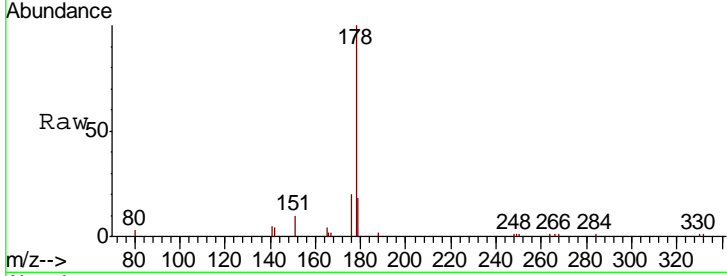
#23
 Phenanthrene
 Concen: 0.407 ng
 RT: 16.95 min Scan# 1561
 Delta R.T. -0.00 min
 Lab File: BN010960.D
 Acq: 18 Jun 2020 19:12

Instrument :
 BNA_N
 ClientSampled :
 MW-23MS

Tgt Ion	Resp	Lower	Upper
178	11944		
176	18.7	15.3	22.9
179	15.9	12.6	19.0

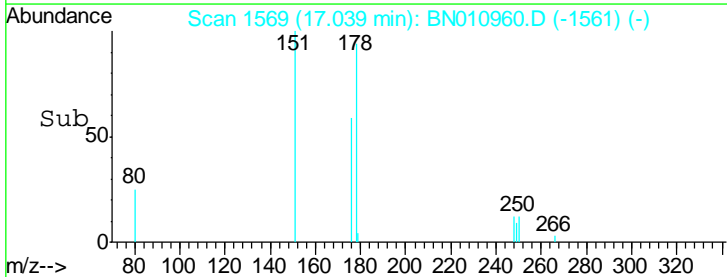
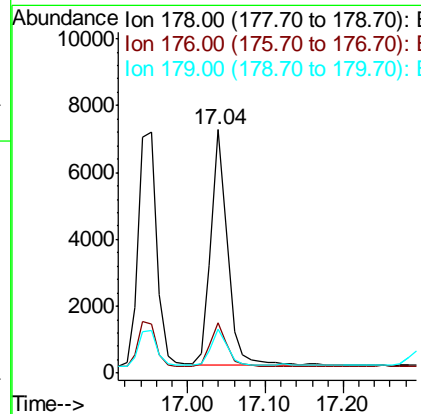
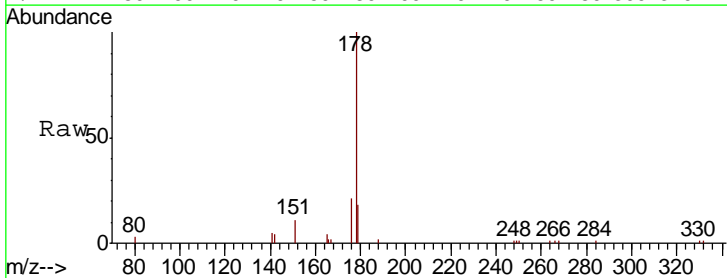
Manual Integrations
 APPROVED

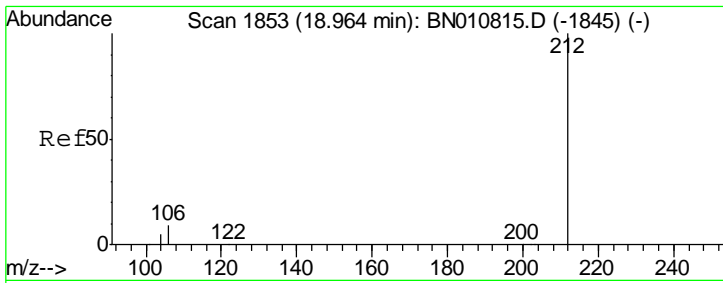
mohammad
 6/19/2020 12:58:35 PM



#24
 Anthracene
 Concen: 0.428 ng
 RT: 17.04 min Scan# 1569
 Delta R.T. -0.01 min
 Lab File: BN010960.D
 Acq: 18 Jun 2020 19:12

Tgt Ion	Resp	Lower	Upper
178	10475		
176	19.3	14.6	22.0
179	15.0	12.3	18.5



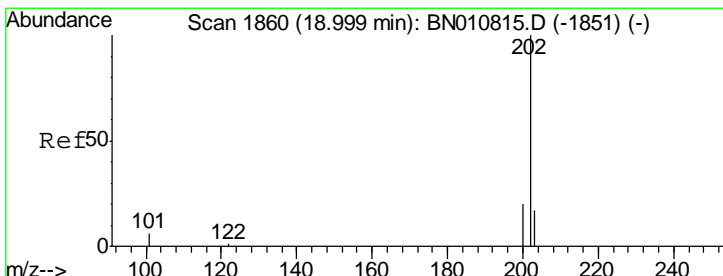
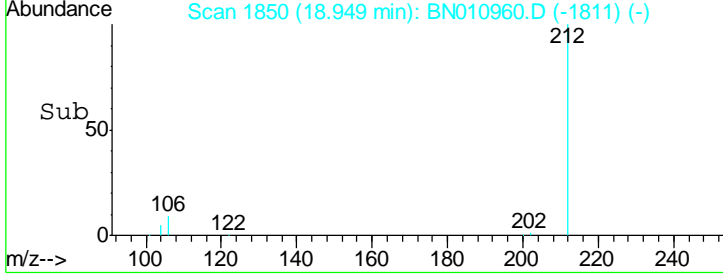
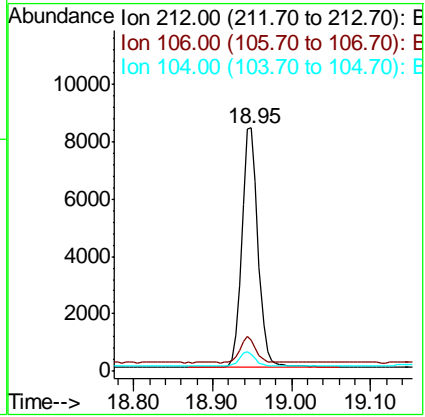
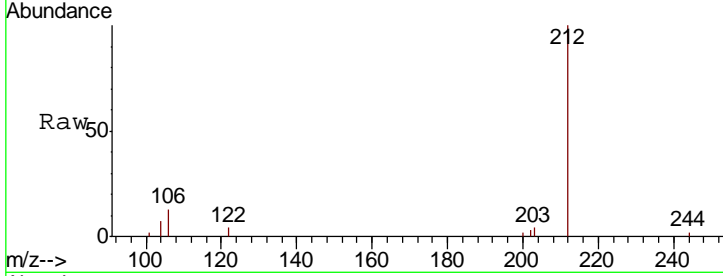


#25
 Fluoranthene-d10
 Concen: 0.399 ng
 RT: 18.95 min Scan# 1850
 Delta R.T. -0.01 min
 Lab File: BN010960.D
 Acq: 18 Jun 2020 19:12

Instrument :
 BNA_N
ClientSampled :
 MW-23MS

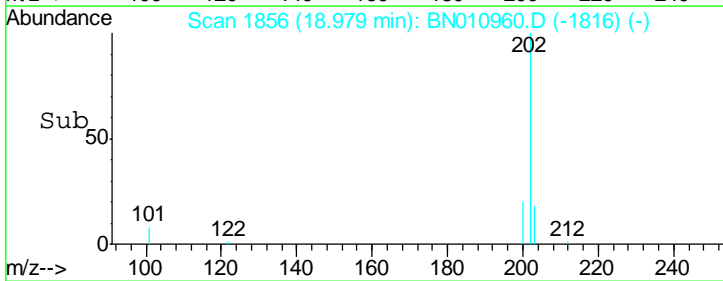
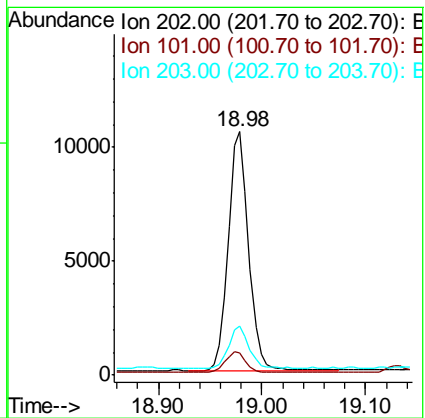
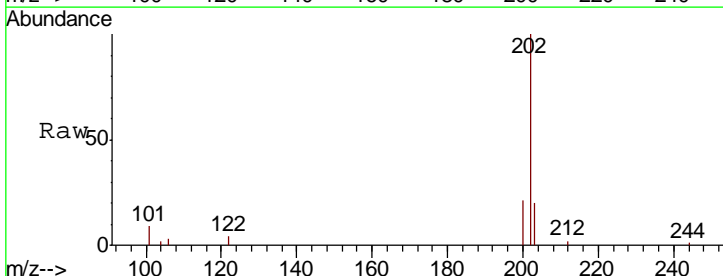
Tgt Ion	Resp	Lower	Upper
212	11822		
212	100		
106	10.2	6.6	10.0#
104	5.7	4.0	6.0

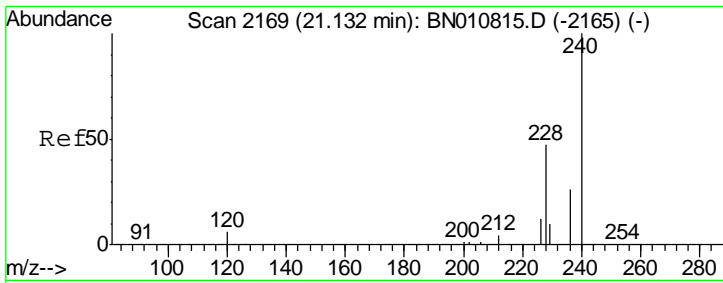
Manual Integrations
APPROVED
 mohammad
 6/19/2020 12:58:35 PM



#26
 Fluoranthene
 Concen: 0.425 ng
 RT: 18.98 min Scan# 1856
 Delta R.T. -0.00 min
 Lab File: BN010960.D
 Acq: 18 Jun 2020 19:12

Tgt Ion	Resp	Lower	Upper
202	14158		
202	100		
101	8.9	5.8	8.6#
203	17.5	13.7	20.5





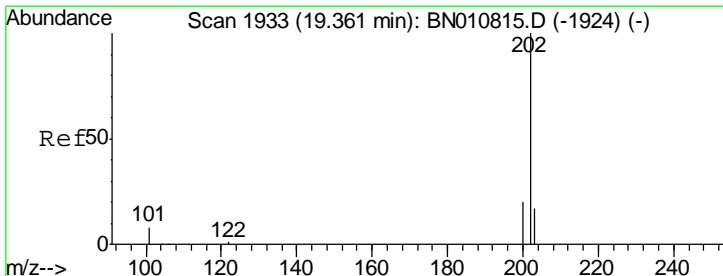
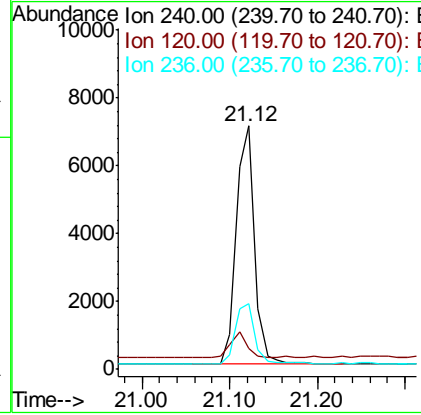
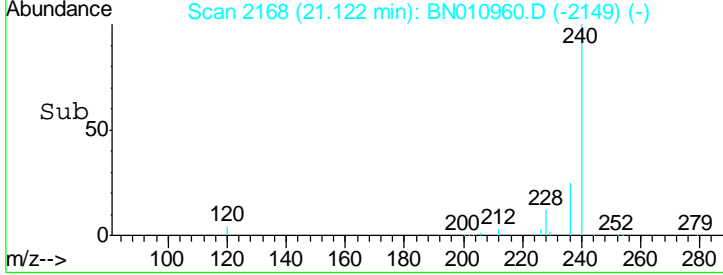
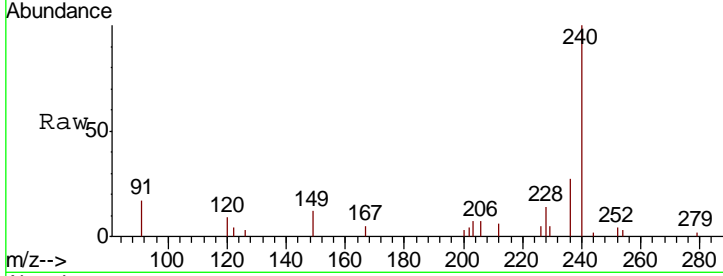
#27
 Chrysene-d12
 Concen: 0.400 ng
 RT: 21.12 min Scan# 2168
 Delta R.T. -0.00 min
 Lab File: BN010960.D
 Acq: 18 Jun 2020 19:12

Instrument :
 BNA_N
 ClientSampled :
 MW-23MS

Tgt Ion	Resp	Lower	Upper
240	10255		
240	100		
120	8.8	7.5	11.3
236	27.2	22.3	33.5

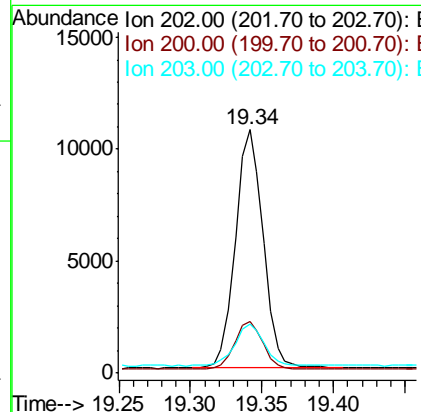
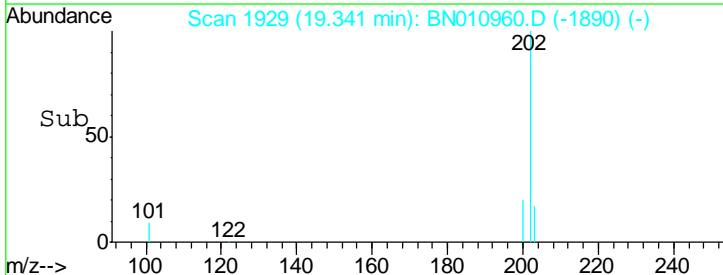
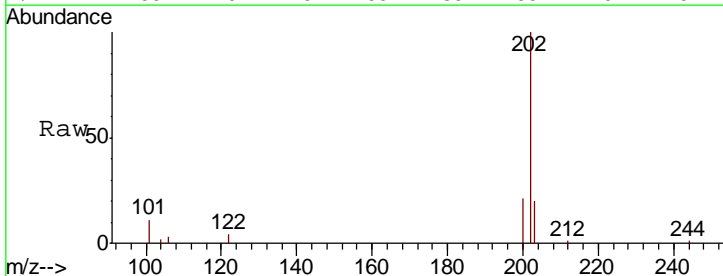
Manual Integrations
 APPROVED

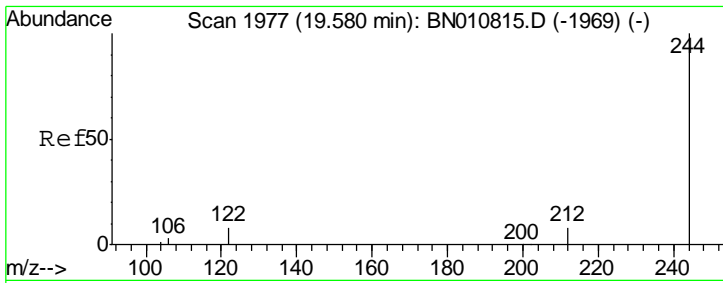
mohammad
 6/19/2020 12:58:35 PM



#28
 Pyrene
 Concen: 0.424 ng
 RT: 19.34 min Scan# 1929
 Delta R.T. -0.00 min
 Lab File: BN010960.D
 Acq: 18 Jun 2020 19:12

Tgt Ion	Resp	Lower	Upper
202	14390		
202	100		
200	20.5	16.4	24.6
203	19.0	14.2	21.4



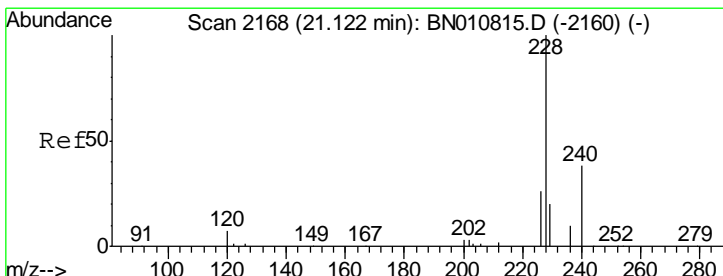
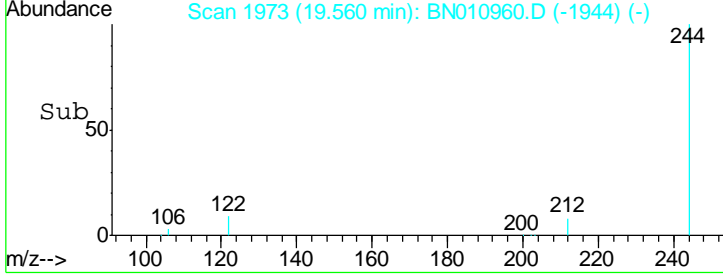
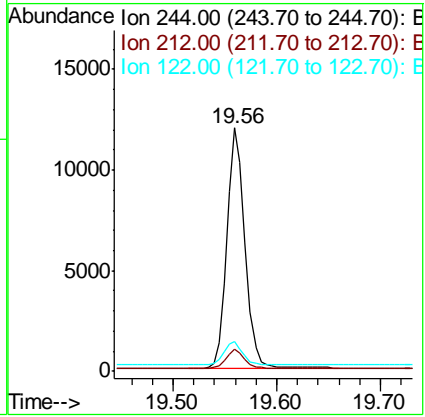
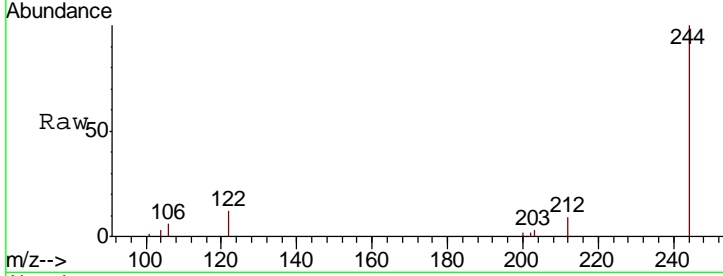


#29
 Terphenyl-d14
 Concen: 0.596 ng
 RT: 19.56 min Scan# 1973
 Delta R.T. -0.00 min
 Lab File: BN010960.D
 Acq: 18 Jun 2020 19:12

Instrument :
 BNA_N
ClientSampled :
 MW-23MS

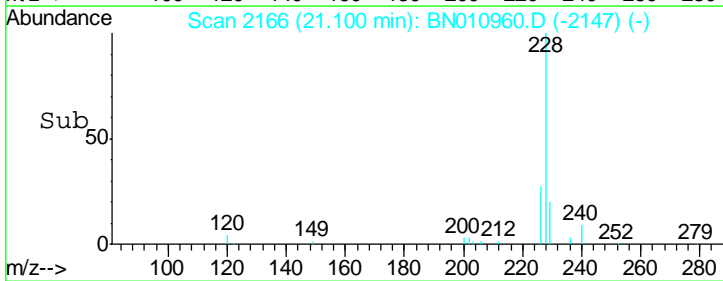
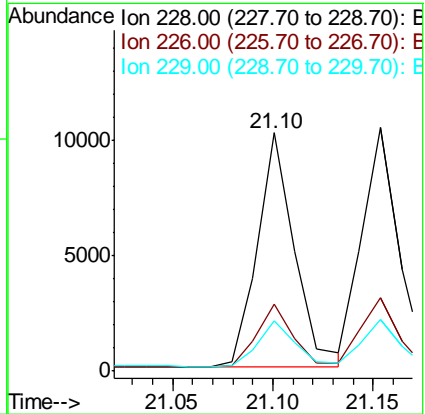
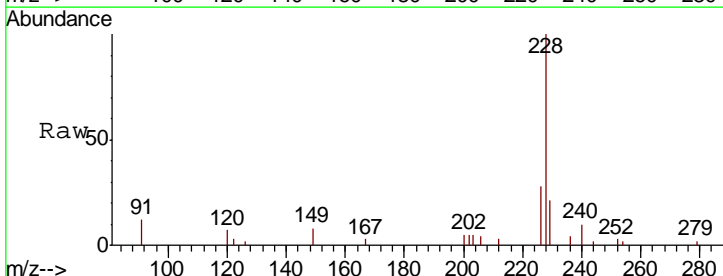
Tgt Ion	Resp	Lower	Upper
244	14304		
212	8.9	7.4	11.2
122	12.0	7.5	11.3

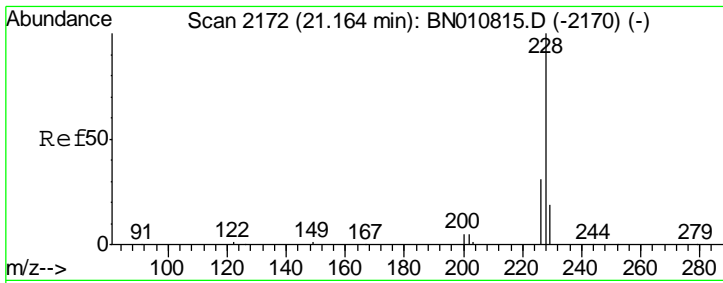
Manual Integrations
APPROVED
 mohammad
 6/19/2020 12:58:35 PM



#30
 Benzo(a)anthracene
 Concen: 0.437 ng
 RT: 21.10 min Scan# 2166
 Delta R.T. -0.00 min
 Lab File: BN010960.D
 Acq: 18 Jun 2020 19:12

Tgt Ion	Resp	Lower	Upper
228	13185		
226	28.0	21.3	31.9
229	21.4	16.6	24.8





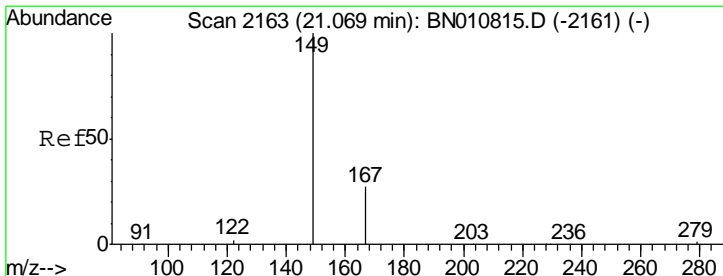
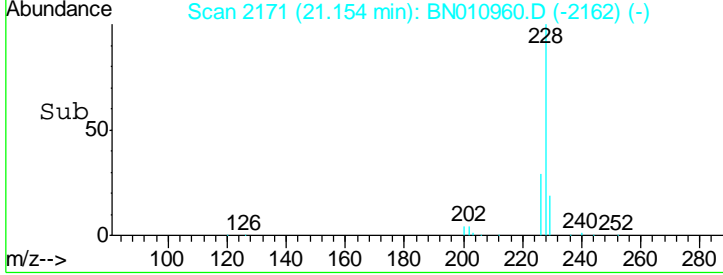
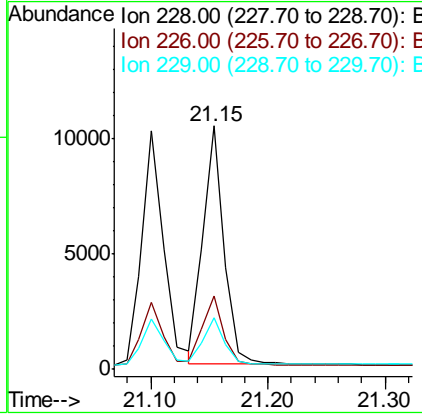
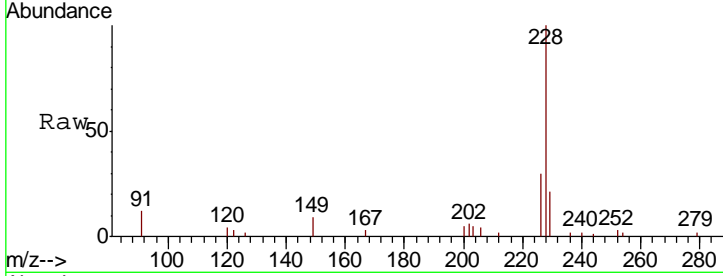
#31
 Chrysene
 Concen: 0.370 ng
 RT: 21.15 min Scan# 2171
 Delta R.T. -0.00 min
 Lab File: BN010960.D
 Acq: 18 Jun 2020 19:12

Instrument :
 BNA_N
 ClientSampled :
 MW-23MS

Tgt Ion	Resp	Lower	Upper
228	12992		
226	30.2	25.0	37.6
229	21.1	16.1	24.1

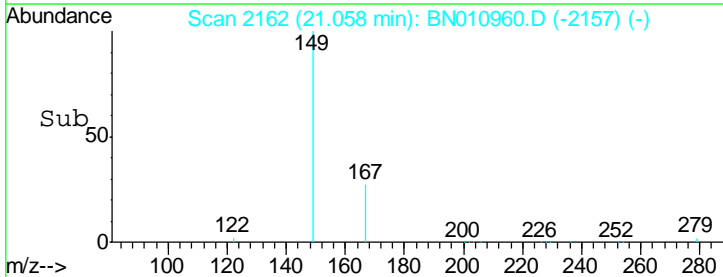
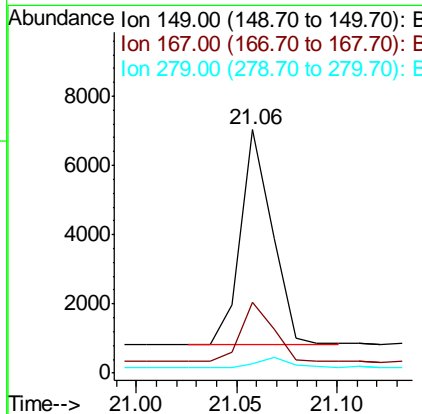
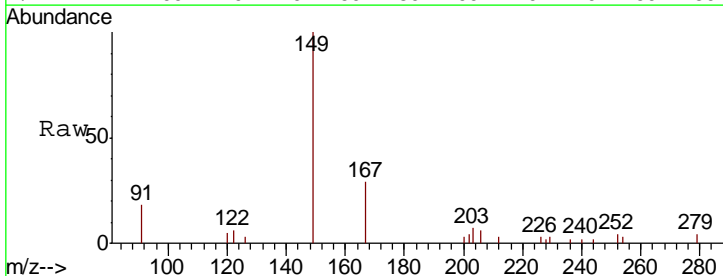
Manual Integrations
 APPROVED

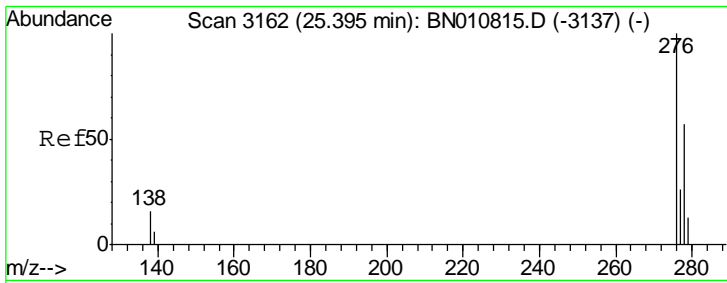
mohammad
 6/19/2020 12:58:35 PM



#32
 Bis(2-ethylhexyl)phthalate
 Concen: 0.681 ng
 RT: 21.06 min Scan# 2162
 Delta R.T. -0.00 min
 Lab File: BN010960.D
 Acq: 18 Jun 2020 19:12

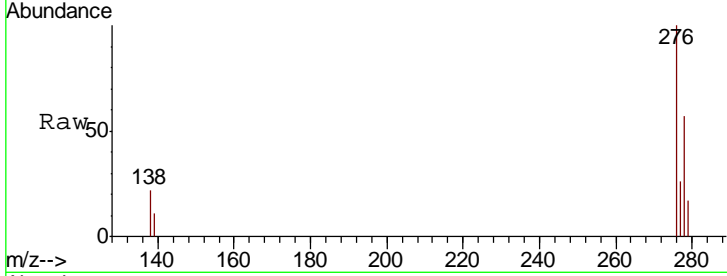
Tgt Ion	Resp	Lower	Upper
149	6847		
167	27.7	24.1	36.1
279	4.8	4.6	7.0





#33
 Indeno(1,2,3-cd)pyrene
 Concen: 0.377 ng
 RT: 25.36 min Scan# 3153
 Delta R.T. -0.01 min
 Lab File: BN010960.D
 Acq: 18 Jun 2020 19:12

Instrument :
 BNA_N
 ClientSampled :
 MW-23MS

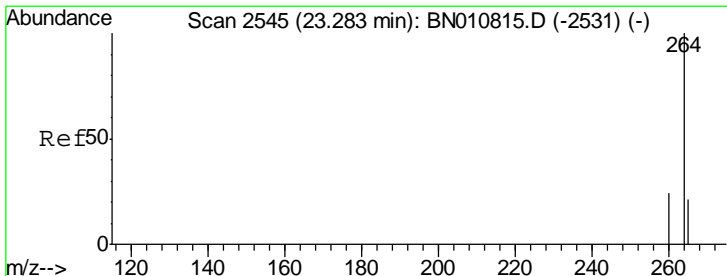
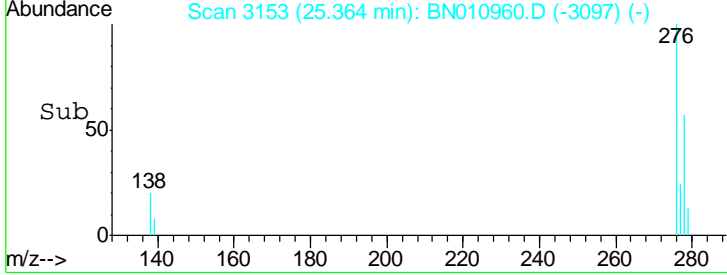
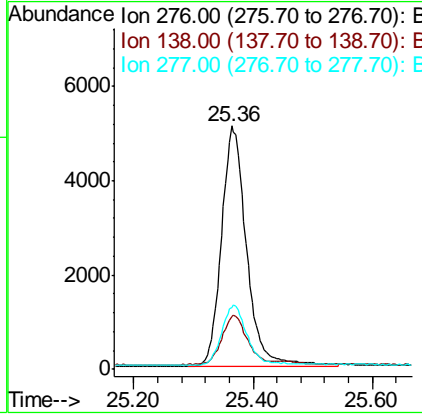


Tgt Ion: 276 Resp: 14816

Ion	Ratio	Lower	Upper
276	100		
138	20.7	13.0	19.6#
277	24.7	19.7	29.5

Manual Integrations
 APPROVED

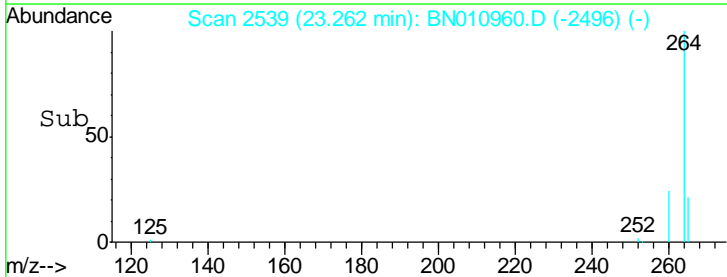
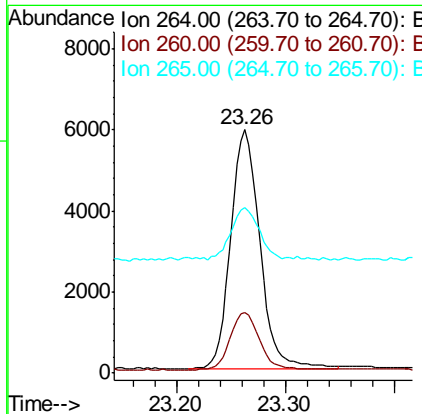
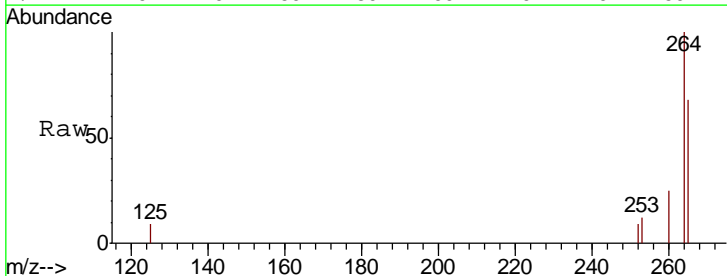
mohammad
 6/19/2020 12:58:35 PM

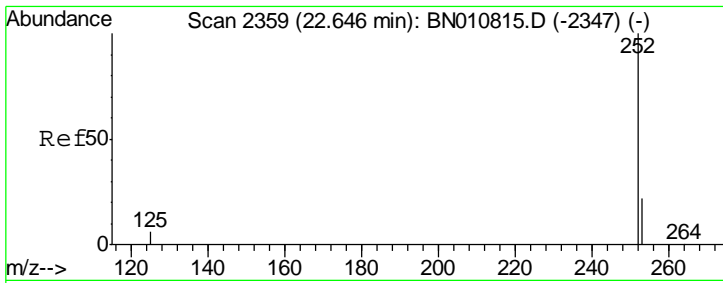


#34
 Perylene-d12
 Concen: 0.400 ng
 RT: 23.26 min Scan# 2539
 Delta R.T. -0.00 min
 Lab File: BN010960.D
 Acq: 18 Jun 2020 19:12

Tgt Ion: 264 Resp: 10923

Ion	Ratio	Lower	Upper
264	100		
260	24.9	20.4	30.6
265	68.1	75.0	112.4#





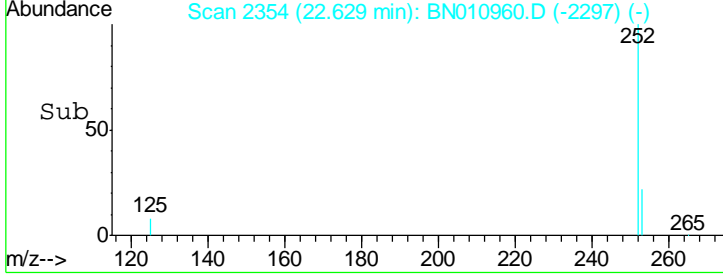
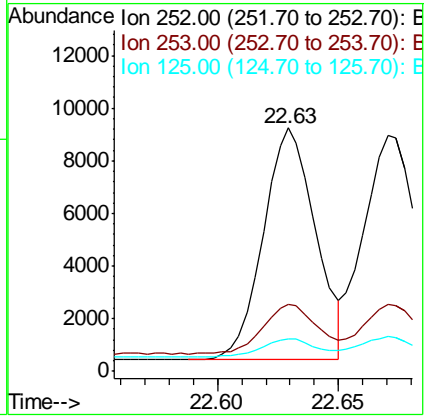
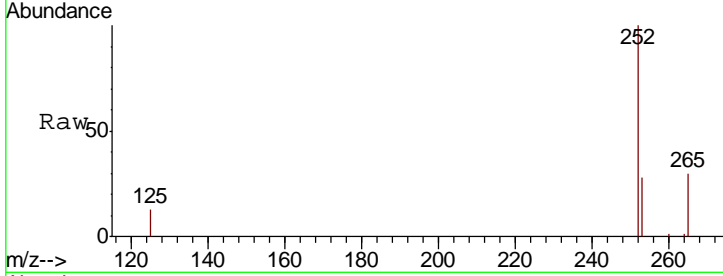
#35
 Benzo(b)fluoranthene
 Concen: 0.356 ng
 RT: 22.63 min Scan# 2354
 Delta R.T. -0.00 min
 Lab File: BN010960.D
 Acq: 18 Jun 2020 19:12

Instrument :
 BNA_N
ClientSampled :
 MW-23MS

Tgt Ion	Resp	Lower	Upper
252	13238		
253	27.7	22.4	33.6
125	13.4	9.4	14.0

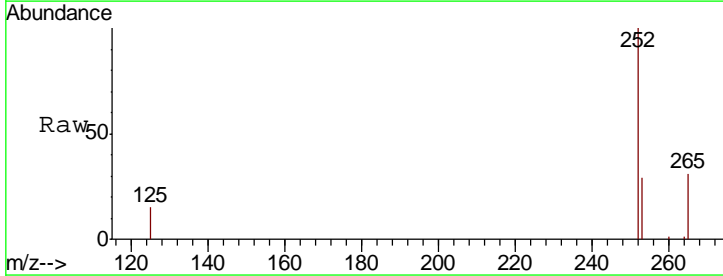
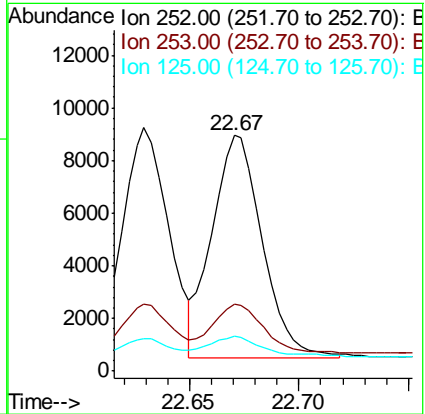
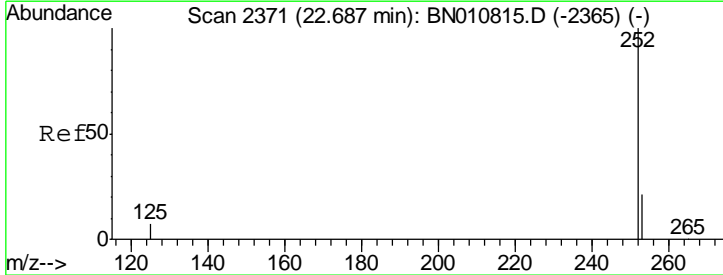
Manual Integrations
APPROVED

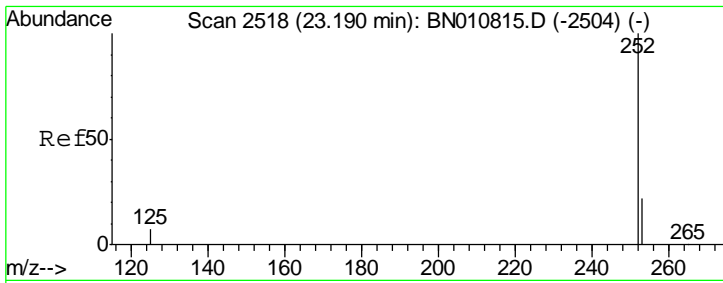
mohammad
 6/19/2020 12:58:35 PM



#36
 Benzo(k)fluoranthene
 Concen: 0.343 ng m
 RT: 22.67 min Scan# 2366
 Delta R.T. -0.00 min
 Lab File: BN010960.D
 Acq: 18 Jun 2020 19:12

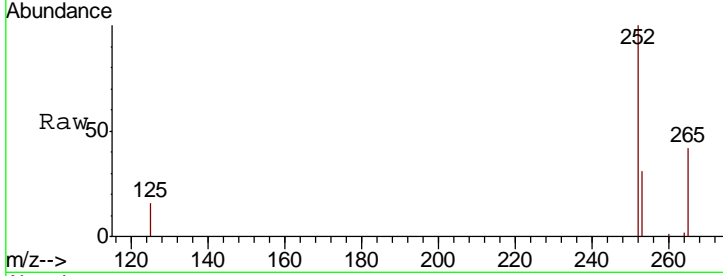
Tgt Ion	Resp	Lower	Upper
252	13589		
253	28.5	22.2	33.4
125	14.8	9.8	14.8#





#37
 Benzo(a)pyrene
 Concen: 0.360 ng
 RT: 23.17 min Scan# 2512
 Delta R.T. -0.00 min
 Lab File: BN010960.D
 Acq: 18 Jun 2020 19:12

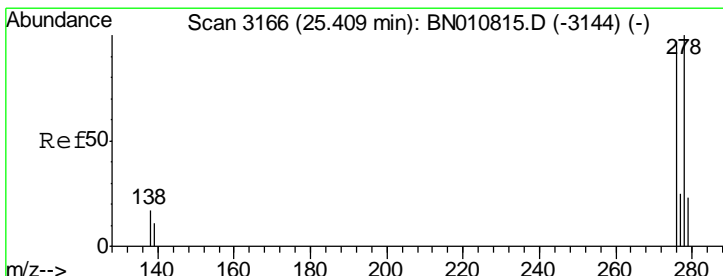
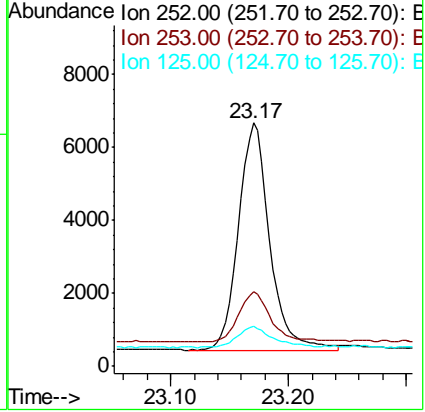
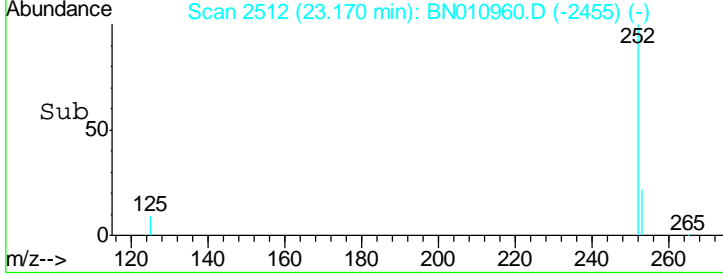
Instrument :
 BNA_N
 ClientSampled :
 MW-23MS



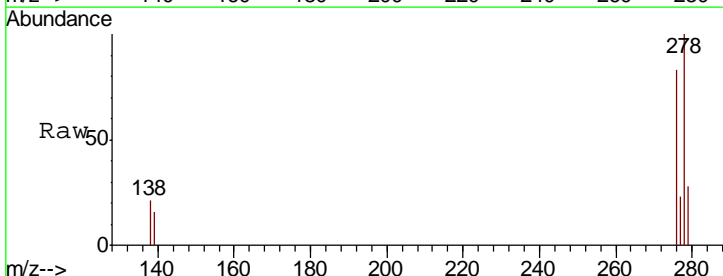
Tgt Ion: 252 Resp: 11474

Ion	Ratio	Lower	Upper
252	100		
253	30.8	25.8	38.8
125	16.3	12.4	18.6

Manual Integrations
 APPROVED
 mohammad
 6/19/2020 12:58:35 PM

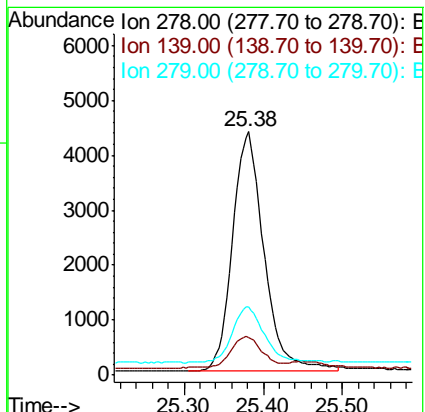
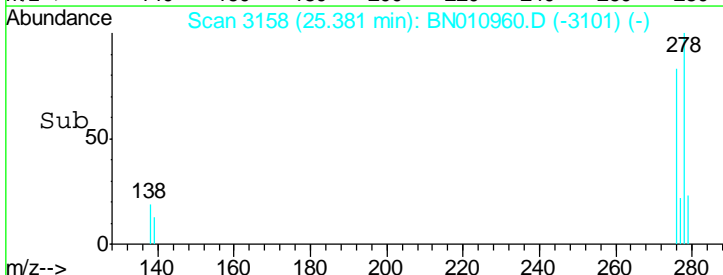


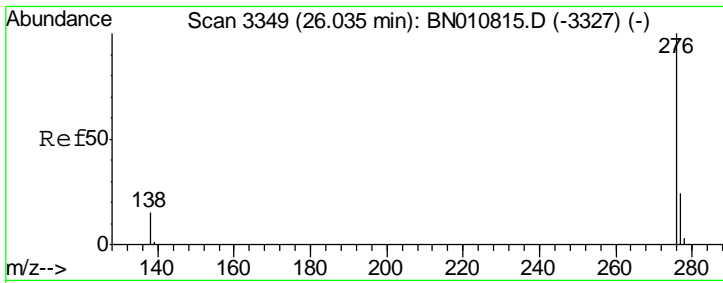
#38
 Dibenzo(a,h)anthracene
 Concen: 0.333 ng
 RT: 25.38 min Scan# 3158
 Delta R.T. -0.00 min
 Lab File: BN010960.D
 Acq: 18 Jun 2020 19:12



Tgt Ion: 278 Resp: 12099

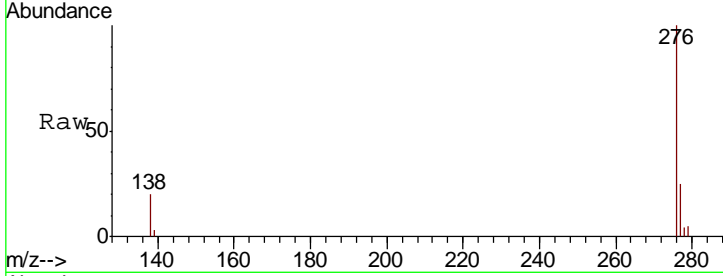
Ion	Ratio	Lower	Upper
278	100		
139	15.5	10.6	15.8
279	27.9	23.6	35.4





#39
 Benzo(a,h,i)perylene
 Concen: 0.340 ng
 RT: 26.00 min Scan# 3339
 Delta R.T. -0.01 min
 Lab File: BN010960.D
 Acq: 18 Jun 2020 19:12

Instrument :
 BNA_N
ClientSampled :
 MW-23MS



Tot Ion: 276 Resp: 12929

Ion	Ratio	Lower	Upper
276	100		
277	25.0	20.5	30.7
138	20.3	13.7	20.5

Manual Integrations
APPROVED
 mohammad
 6/19/2020 12:58:35 PM

