

Data Path : Z:\svoasrv\HPCHEM1\BNA_N\Data\BN062822\
 Data File : BN020534.D
 Acq On : 28 Jun 2022 15:20
 Operator : CG/JU
 Sample : SSTDCCC0.4
 Misc :
 ALS Vial : 2 Sample Multiplier: 1

Instrument :
 BNA_N
 ClientSampleId :
 SSTDCCC0.4

Quant Time: Jun 29 00:18:26 2022
 Quant Method : Z:\SVOASRV\HPCHEM1\BNA_N\METHODS\8270-SIM-BN062622.M
 Quant Title : ASP BNA STANDARDS FOR 5 POINT CALIBRATION
 QLast Update : Mon Jun 27 02:03:21 2022
 Response via : Initial Calibration

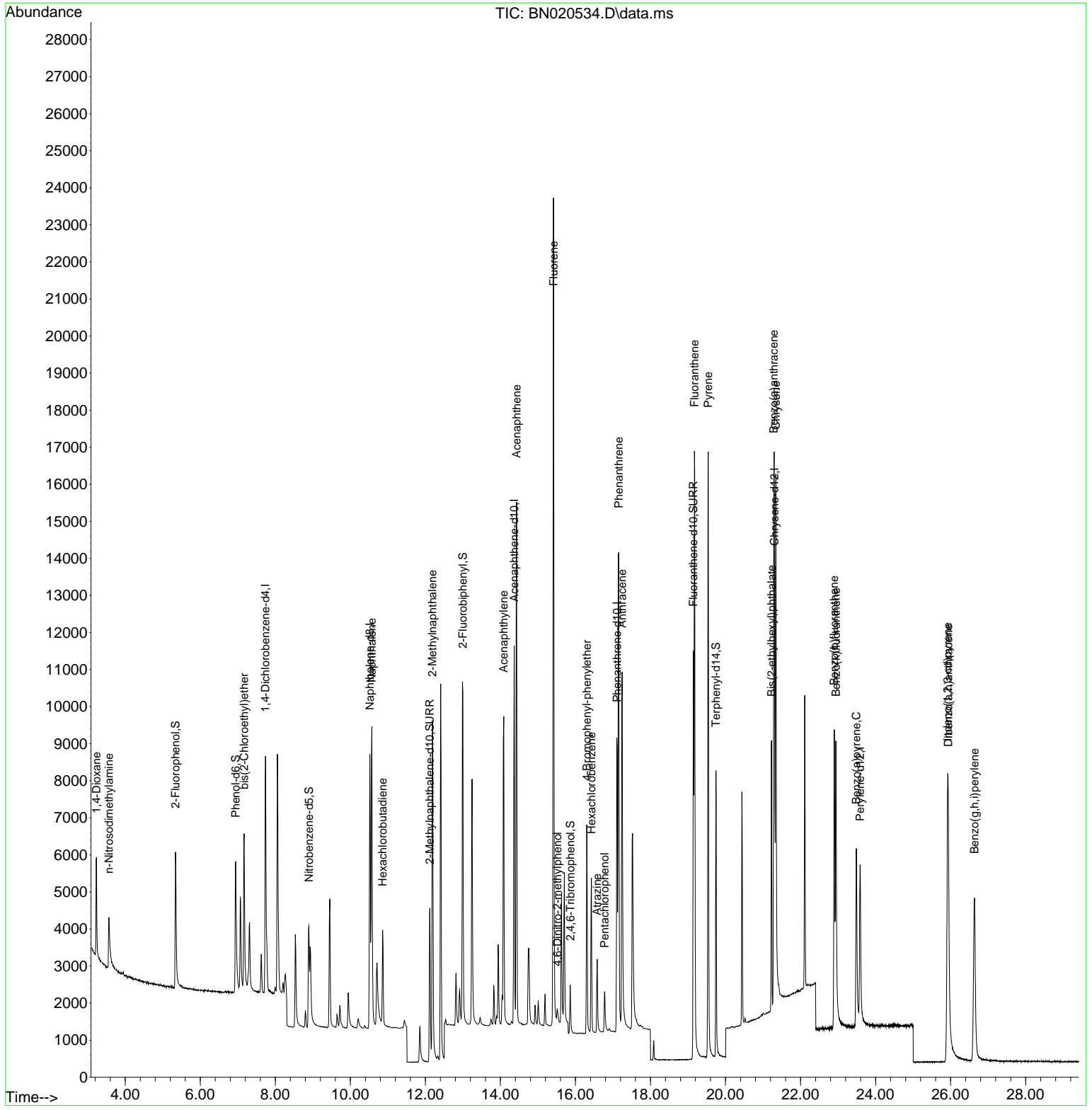
Compound	R.T.	QIon	Response	Conc	Units	Dev(Min)	
Internal Standards							
1) 1,4-Dichlorobenzene-d4	7.739	152	3507	0.400	ng	0.00	
7) Naphthalene-d8	10.519	136	10575	0.400	ng	# 0.00	
13) Acenaphthene-d10	14.367	164	6015	0.400	ng	0.00	
19) Phenanthrene-d10	17.113	188	12652	0.400	ng	0.00	
29) Chrysene-d12	21.306	240	8977	0.400	ng	# 0.00	
35) Perylene-d12	23.589	264	6926	0.400	ng	#-0.01	
System Monitoring Compounds							
4) 2-Fluorophenol	5.341	112	3575	0.367	ng	0.00	
5) Phenol-d6	6.944	99	4288	0.369	ng	0.00	
8) Nitrobenzene-d5	8.897	82	3052	0.356	ng	0.00	
11) 2-Methylnaphthalene-d10	12.117	152	6684	0.369	ng	0.00	
14) 2,4,6-Tribromophenol	15.861	330	749	0.330	ng	0.00	
15) 2-Fluorobiphenyl	12.998	172	9697	0.391	ng	0.00	
27) Fluoranthene-d10	19.143	212	13421	0.357	ng	0.00	
31) Terphenyl-d14	19.746	244	9431	0.440	ng	0.00	
Target Compounds							
2) 1,4-Dioxane	3.232	88	1595	0.347	ng	97	Qvalue
3) n-Nitrosodimethylamine	3.564	42	1421	0.339	ng	# 92	
6) bis(2-Chloroethyl)ether	7.168	93	3733	0.373	ng	99	
9) Naphthalene	10.573	128	12107	0.383	ng	99	
10) Hexachlorobutadiene	10.861	225	2177	0.378	ng	# 99	
12) 2-Methylnaphthalene	12.189	142	7906	0.377	ng	100	
16) Acenaphthylene	14.089	152	10640	0.368	ng	99	
17) Acenaphthene	14.431	154	7495	0.381	ng	96	
18) Fluorene	15.415	166	9639	0.376	ng	100	
20) 4,6-Dinitro-2-methylph...	15.521	198	371	0.375	ng	# 58	
21) 4-Bromophenyl-phenylether	16.302	248	2749	0.374	ng	95	
22) Hexachlorobenzene	16.425	284	3135	0.385	ng	99	
23) Atrazine	16.579	200	1855	0.320	ng	96	
24) Pentachlorophenol	16.774	266	691	0.448	ng	99	
25) Phenanthrene	17.154	178	15936	0.374	ng	100	
26) Anthracene	17.246	178	13275	0.361	ng	99	
28) Fluoranthene	19.173	202	16723	0.359	ng	99	
30) Pyrene	19.539	202	16837	0.443	ng	100	
32) Benzo(a)anthracene	21.288	228	11503	0.359	ng	98	
33) Chrysene	21.342	228	13869	0.391	ng	98	
34) Bis(2-ethylhexyl)phtha...	21.225	149	6229	0.345	ng	100	
36) Indeno(1,2,3-cd)pyrene	25.919	276	11342	0.368	ng	99	
37) Benzo(b)fluoranthene	22.899	252	10389	0.389	ng	96	
38) Benzo(k)fluoranthene	22.942	252	10716	0.377	ng	96	
39) Benzo(a)pyrene	23.486	252	8930	0.386	ng	94	
40) Dibenzo(a,h)anthracene	25.936	278	8935	0.361	ng	96	
41) Benzo(g,h,i)perylene	26.638	276	10179	0.377	ng	97	

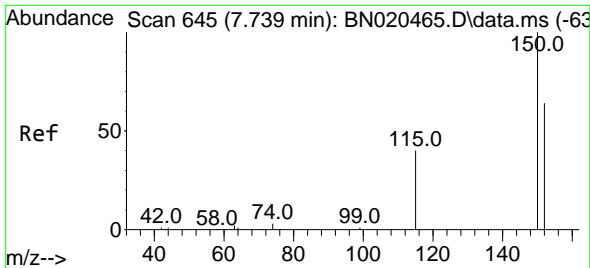
(#) = qualifier out of range (m) = manual integration (+) = signals summed

Data Path : Z:\svoasrv\HPCHEM1\BNA_N\Data\BN062822\
 Data File : BN020534.D
 Acq On : 28 Jun 2022 15:20
 Operator : CG/JU
 Sample : SSTDCCC0.4
 Misc :
 ALS Vial : 2 Sample Multiplier: 1

Instrument :
 BNA_N
ClientSampleId :
 SSTDCCC0.4

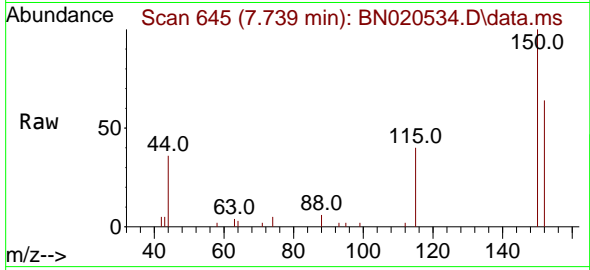
Quant Time: Jun 29 00:18:26 2022
 Quant Method : Z:\SVOASRV\HPCHEM1\BNA_N\METHODS\8270-SIM-BN062622.M
 Quant Title : ASP BNA STANDARDS FOR 5 POINT CALIBRATION
 QLast Update : Mon Jun 27 02:03:21 2022
 Response via : Initial Calibration



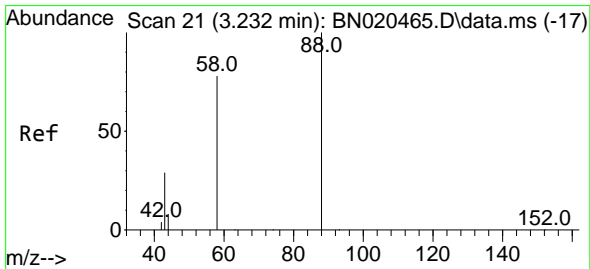
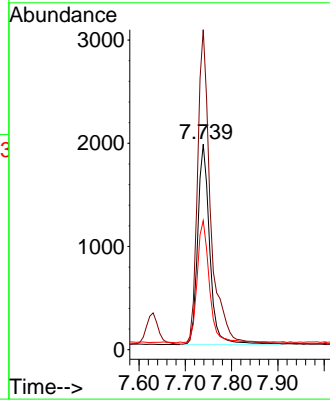
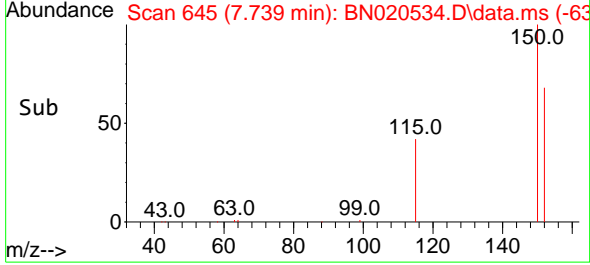


#1
 1,4-Dichlorobenzene-d4
 Concen: 0.400 ng
 RT: 7.739 min Scan# 64
 Delta R.T. -0.000 min
 Lab File: BN020534.D
 Acq: 28 Jun 2022 15:20

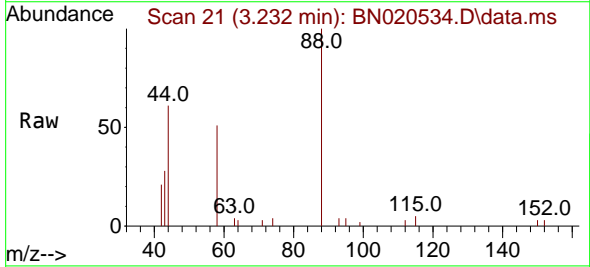
Instrument :
 BNA_N
 ClientSampleId :
 SSTDCCC0.4



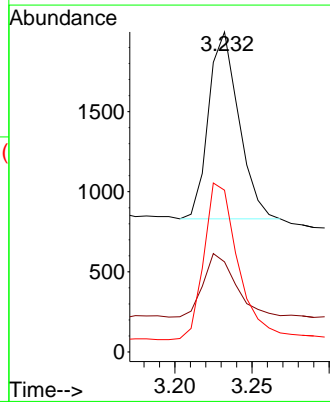
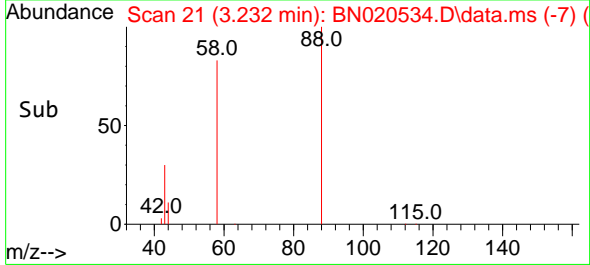
Tgt Ion:152 Resp: 3507
 Ion Ratio Lower Upper
 152 100
 150 155.7 127.9 191.9
 115 62.8 51.4 77.2

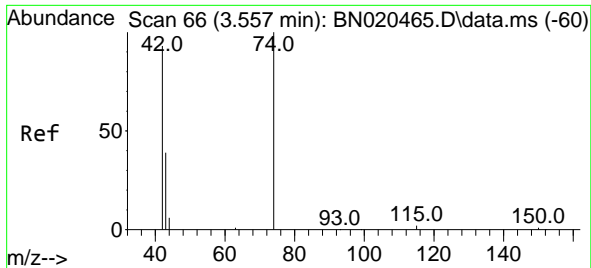


#2
 1,4-Dioxane
 Concen: 0.347 ng
 RT: 3.232 min Scan# 21
 Delta R.T. -0.000 min
 Lab File: BN020534.D
 Acq: 28 Jun 2022 15:20



Tgt Ion: 88 Resp: 1595
 Ion Ratio Lower Upper
 88 100
 43 36.3 30.2 45.2
 58 94.2 73.0 109.6

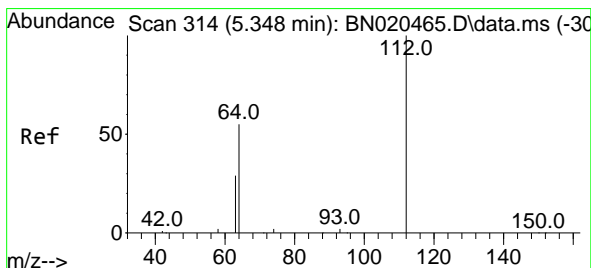
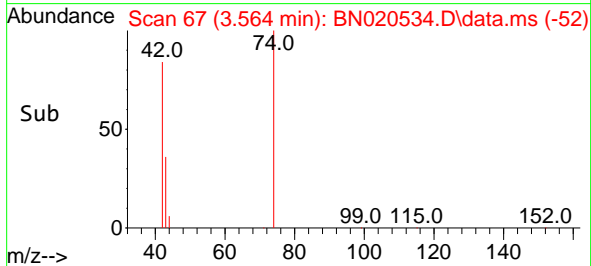
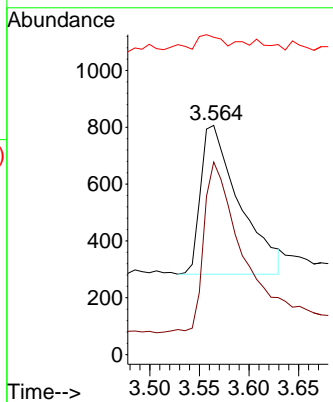
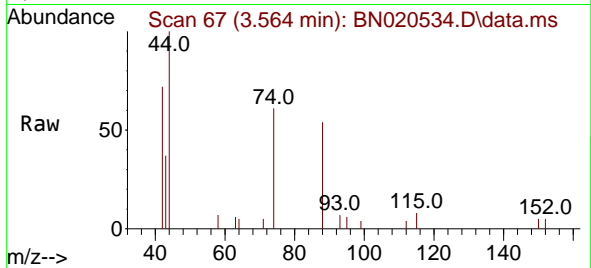




#3
 n-Nitrosodimethylamine
 Concen: 0.339 ng
 RT: 3.564 min Scan# 61
 Delta R.T. 0.007 min
 Lab File: BN020534.D
 Acq: 28 Jun 2022 15:20

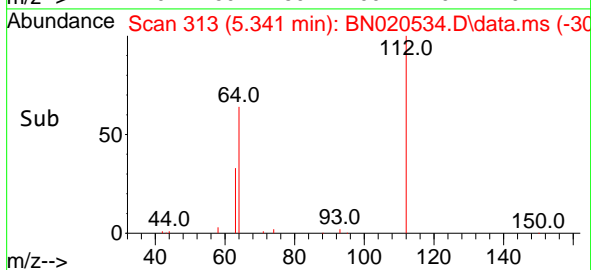
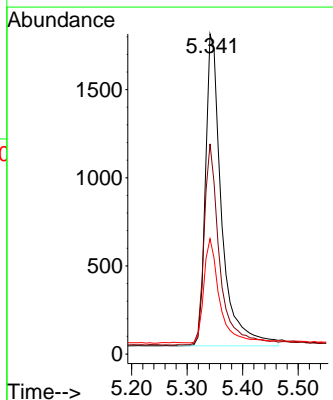
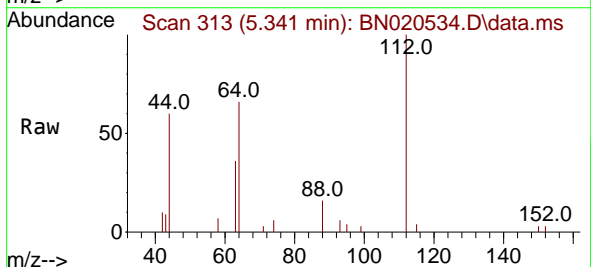
Instrument :
 BNA_N
 ClientSampleId :
 SSTDCCC0.4

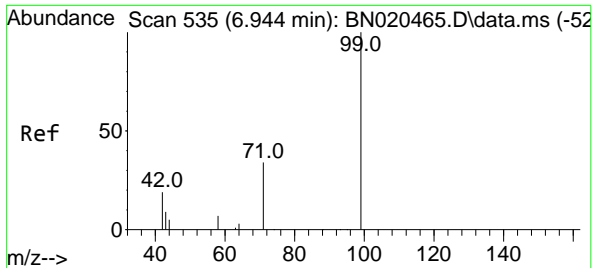
Tgt Ion: 42 Resp: 1421
 Ion Ratio Lower Upper
 42 100
 74 112.9 84.0 126.0
 44 7.2 9.8 14.8#



#4
 2-Fluorophenol
 Concen: 0.367 ng
 RT: 5.341 min Scan# 313
 Delta R.T. -0.007 min
 Lab File: BN020534.D
 Acq: 28 Jun 2022 15:20

Tgt Ion: 112 Resp: 3575
 Ion Ratio Lower Upper
 112 100
 64 62.6 49.1 73.7
 63 33.0 26.3 39.5

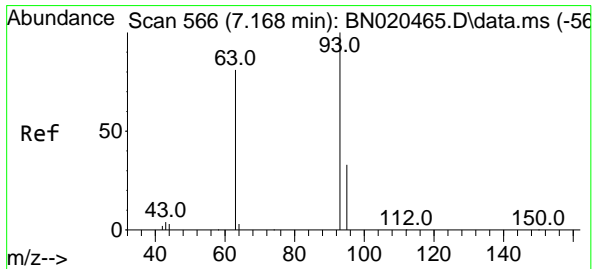
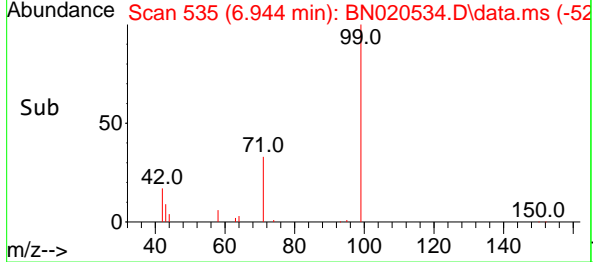
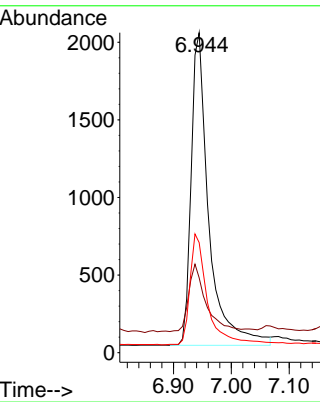
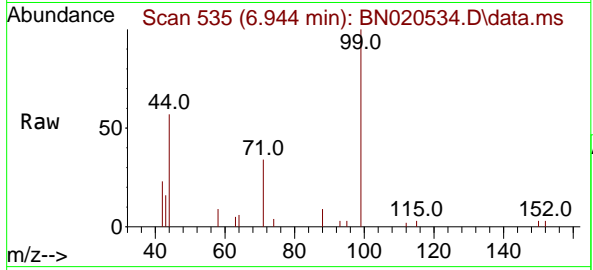




#5
 Phenol-d6
 Concen: 0.369 ng
 RT: 6.944 min Scan# 511
 Delta R.T. -0.000 min
 Lab File: BN020534.D
 Acq: 28 Jun 2022 15:20

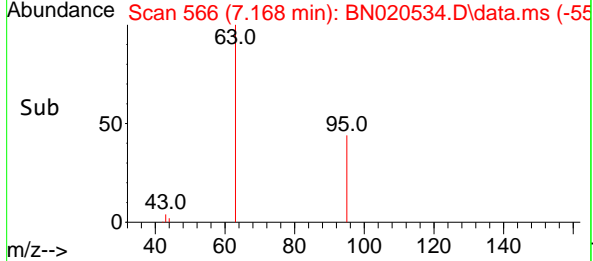
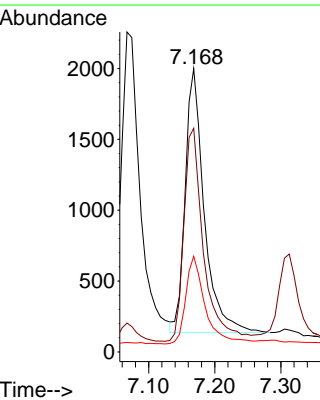
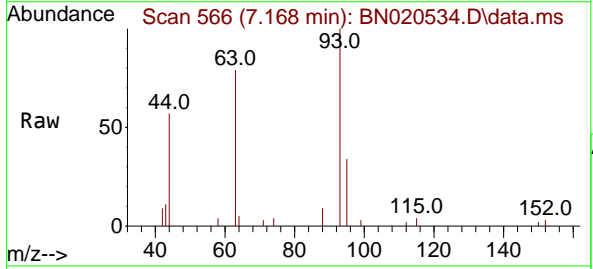
Instrument : BNA_N
 ClientSampleId : SSTDCCC0.4

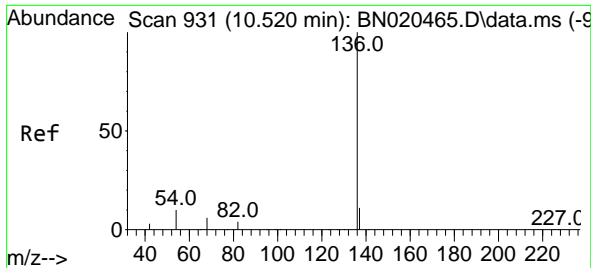
Tgt Ion	Resp	Lower	Upper
99	4288		
99	100		
42	21.1	19.3	28.9
71	35.6	27.5	41.3



#6
 bis(2-Chloroethyl)ether
 Concen: 0.373 ng
 RT: 7.168 min Scan# 566
 Delta R.T. -0.000 min
 Lab File: BN020534.D
 Acq: 28 Jun 2022 15:20

Tgt Ion	Resp	Lower	Upper
93	3733		
93	100		
63	83.3	67.4	101.0
95	34.2	26.5	39.7

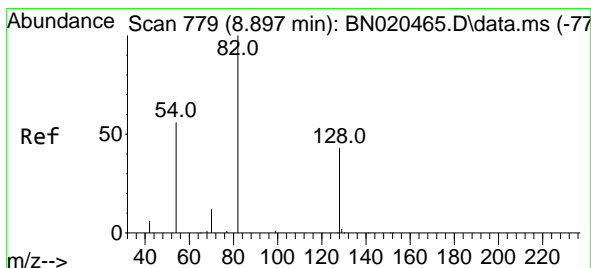
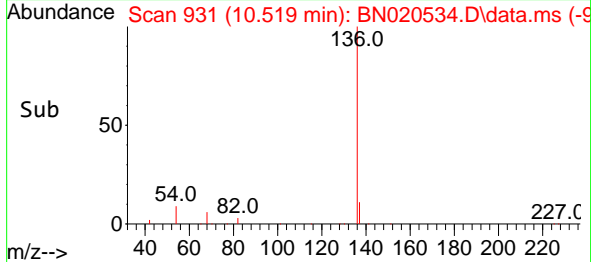
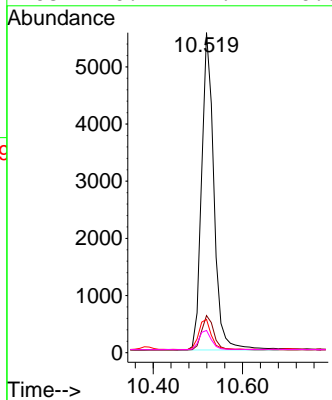
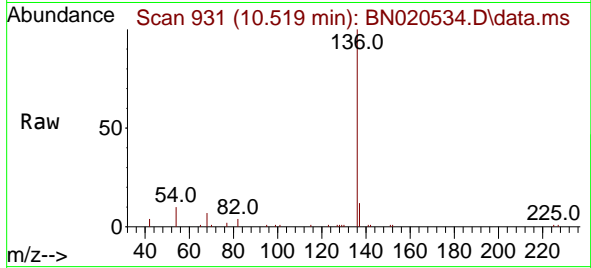




#7
 Naphthalene-d8
 Concen: 0.400 ng
 RT: 10.519 min Scan# 911
 Delta R.T. -0.000 min
 Lab File: BN020534.D
 Acq: 28 Jun 2022 15:20

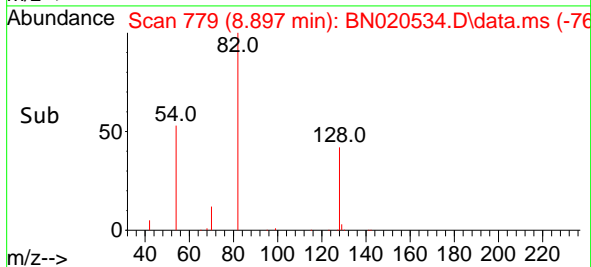
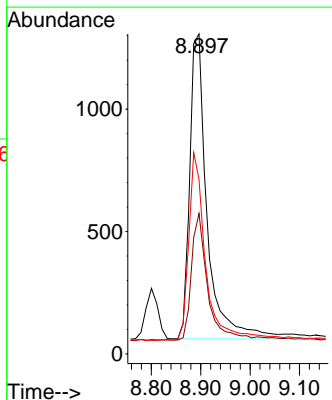
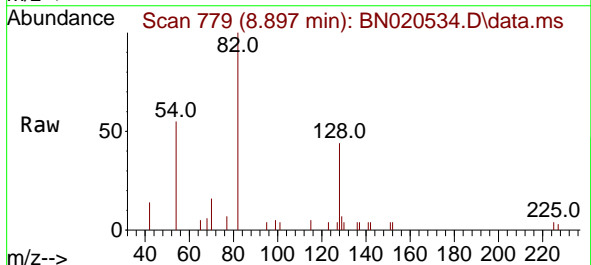
Instrument : BNA_N
 ClientSampleId : SSTDCCC0.4

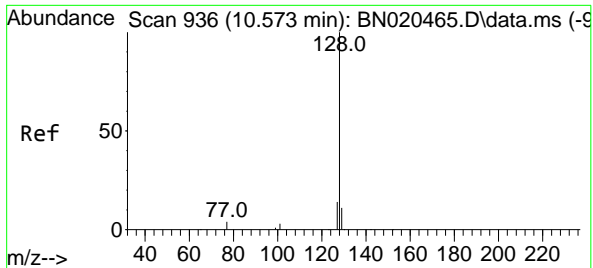
Tgt Ion	Resp	Lower	Upper
136	10575		
136	100		
137	11.6	9.0	13.6
54	10.4	6.2	9.2#
68	6.9	4.4	6.6#



#8
 Nitrobenzene-d5
 Concen: 0.356 ng
 RT: 8.897 min Scan# 779
 Delta R.T. -0.000 min
 Lab File: BN020534.D
 Acq: 28 Jun 2022 15:20

Tgt Ion	Resp	Lower	Upper
82	3052		
82	100		
128	43.9	35.0	52.6
54	54.6	46.2	69.4



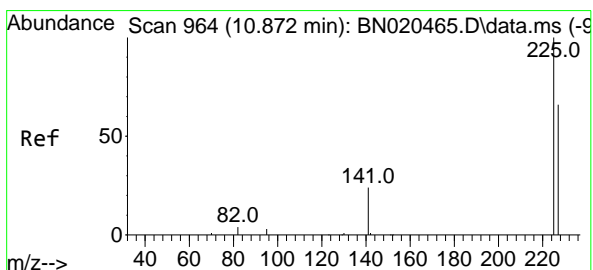
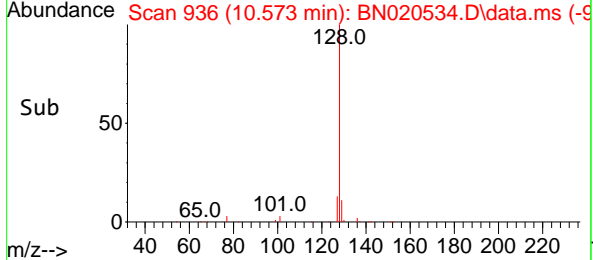
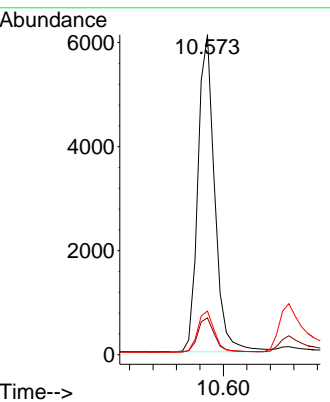
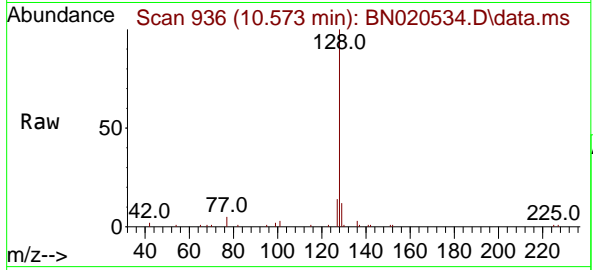


#9
 Naphthalene
 Concen: 0.383 ng
 RT: 10.573 min Scan# 91
 Delta R.T. -0.000 min
 Lab File: BN020534.D
 Acq: 28 Jun 2022 15:20

Instrument : BNA_N
 ClientSampleId : SSTDCCC0.4

Tgt Ion:128 Resp: 12107

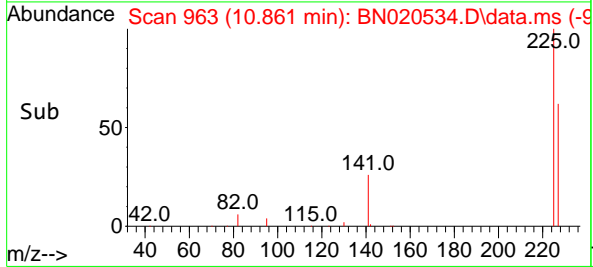
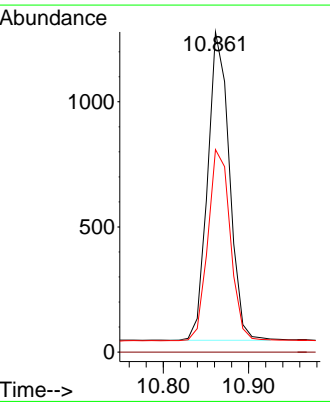
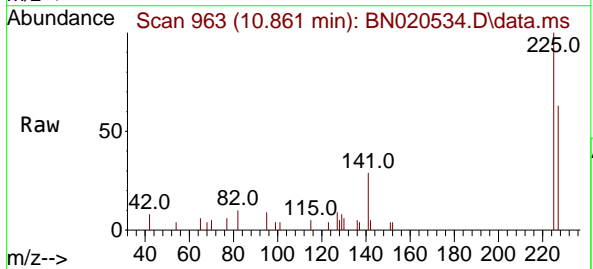
Ion	Ratio	Lower	Upper
128	100		
129	11.5	8.9	13.3
127	13.6	10.8	16.2

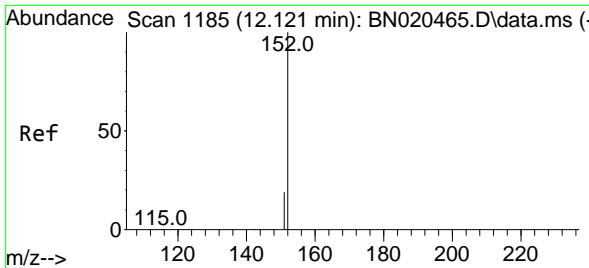


#10
 Hexachlorobutadiene
 Concen: 0.378 ng
 RT: 10.861 min Scan# 963
 Delta R.T. -0.011 min
 Lab File: BN020534.D
 Acq: 28 Jun 2022 15:20

Tgt Ion:225 Resp: 2177

Ion	Ratio	Lower	Upper
225	100		
223	0.0	0.0	0.0
227	64.2	50.9	76.3

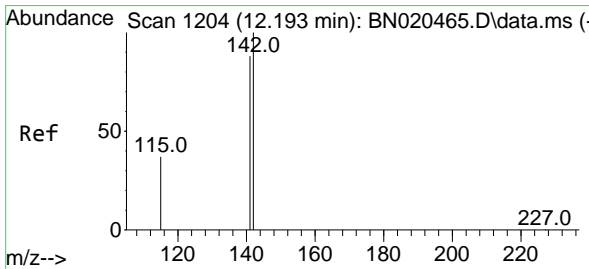
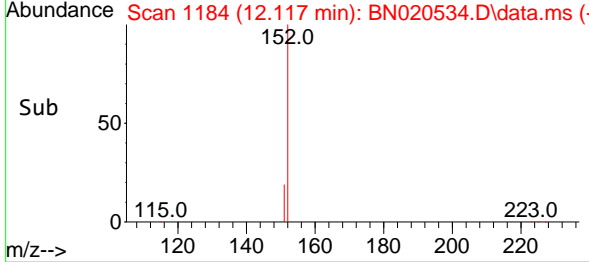
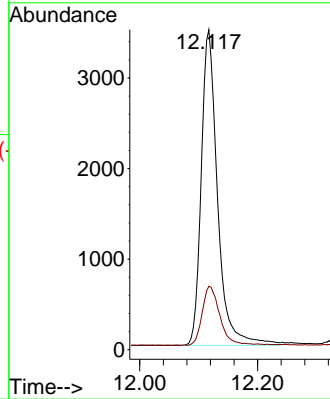
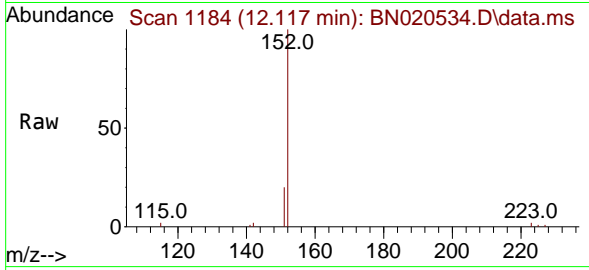




#11
 2-Methylnaphthalene-d10
 Concen: 0.369 ng
 RT: 12.117 min Scan# 1184
 Delta R.T. -0.004 min
 Lab File: BN020534.D
 Acq: 28 Jun 2022 15:20

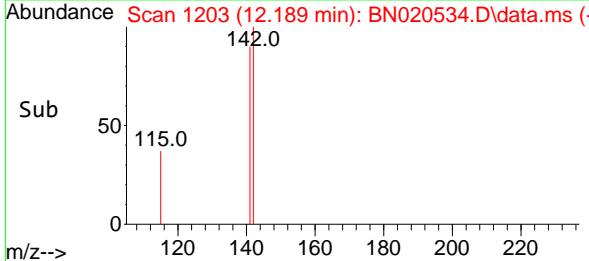
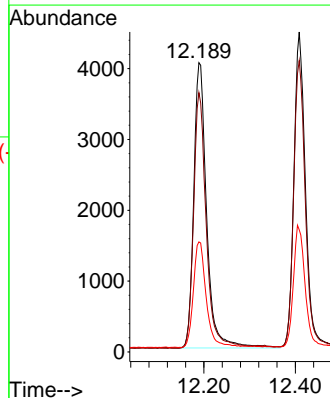
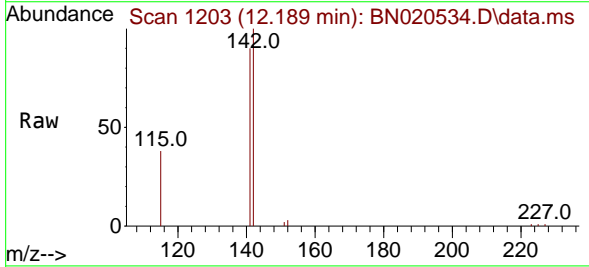
Instrument : BNA_N
 ClientSampleId : SSTDCCC0.4

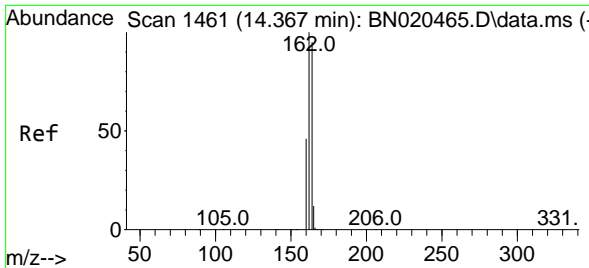
Tgt Ion:152 Resp: 6684
 Ion Ratio Lower Upper
 152 100
 151 20.2 16.2 24.4



#12
 2-Methylnaphthalene
 Concen: 0.377 ng
 RT: 12.189 min Scan# 1203
 Delta R.T. -0.004 min
 Lab File: BN020534.D
 Acq: 28 Jun 2022 15:20

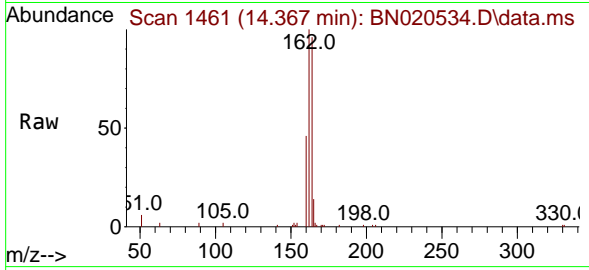
Tgt Ion:142 Resp: 7906
 Ion Ratio Lower Upper
 142 100
 141 89.7 71.6 107.4
 115 38.1 29.8 44.8





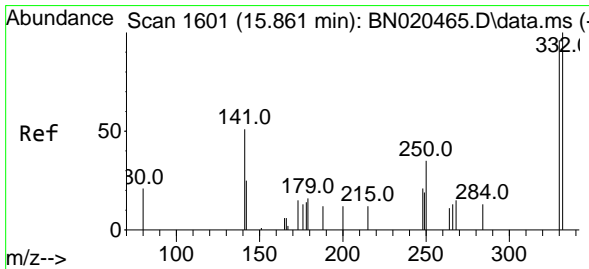
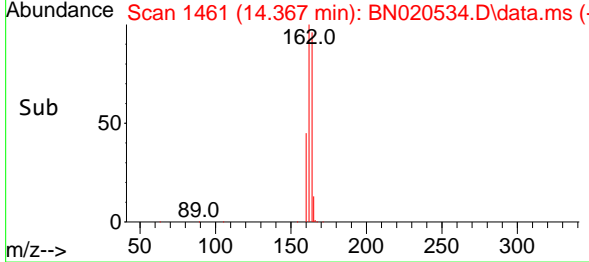
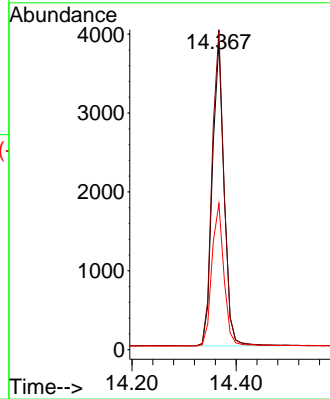
#13
 Acenaphthene-d10
 Concen: 0.400 ng
 RT: 14.367 min Scan# 14
 Delta R.T. -0.000 min
 Lab File: BN020534.D
 Acq: 28 Jun 2022 15:20

Instrument : BNA_N
 ClientSampleId : SSTDCCC0.4

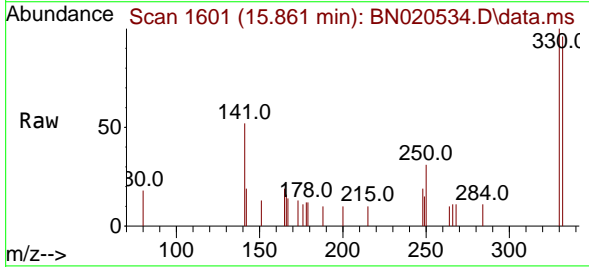


Tgt Ion:164 Resp: 6015

Ion	Ratio	Lower	Upper
164	100		
162	103.9	82.1	123.1
160	47.5	38.6	58.0

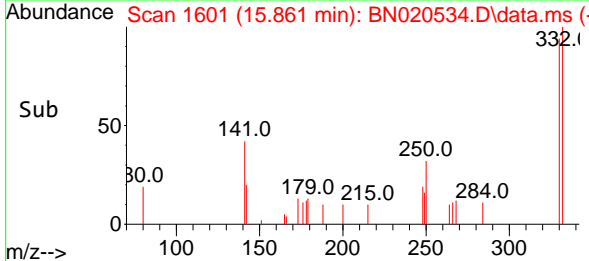
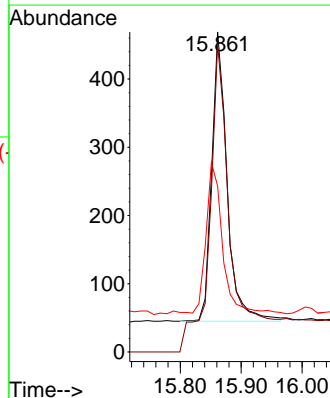


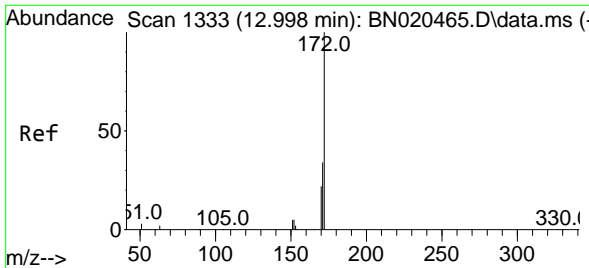
#14
 2,4,6-Tribromophenol
 Concen: 0.330 ng
 RT: 15.861 min Scan# 1601
 Delta R.T. -0.000 min
 Lab File: BN020534.D
 Acq: 28 Jun 2022 15:20



Tgt Ion:330 Resp: 749

Ion	Ratio	Lower	Upper
330	100		
332	153.3	77.6	116.4
141	55.5	41.0	61.4



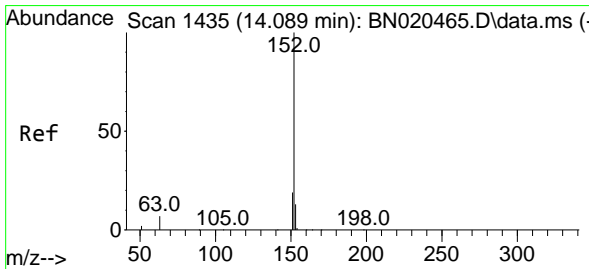
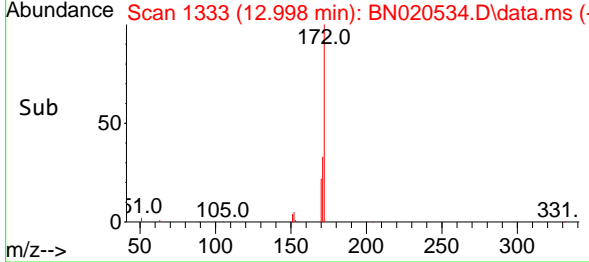
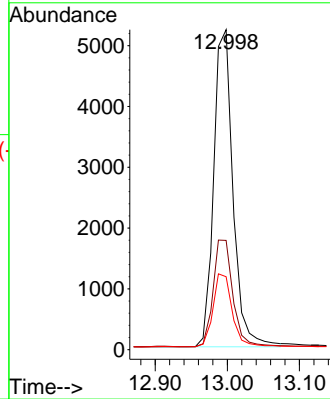
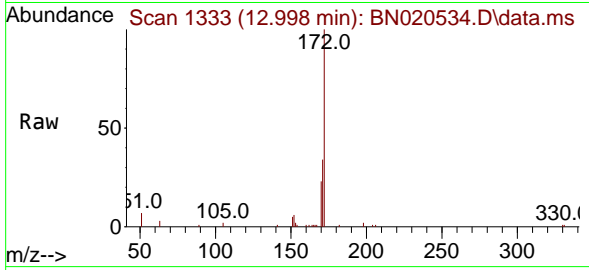


#15
 2-Fluorobiphenyl
 Concen: 0.391 ng
 RT: 12.998 min Scan# 1333
 Delta R.T. -0.000 min
 Lab File: BN020534.D
 Acq: 28 Jun 2022 15:20

Instrument : BNA_N
 ClientSampleId : SSTDCCC0.4

Tgt Ion:172 Resp: 9697

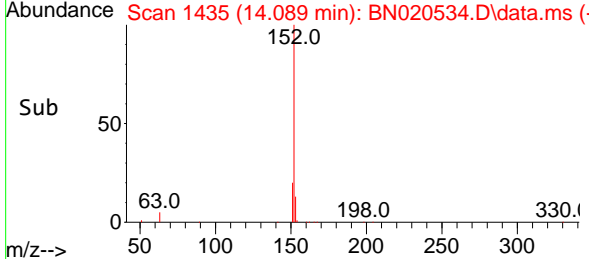
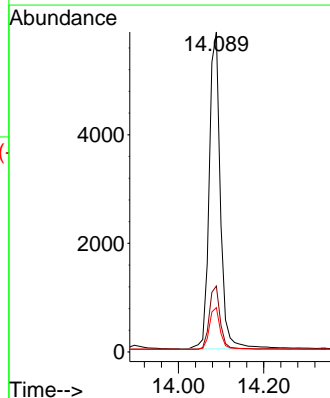
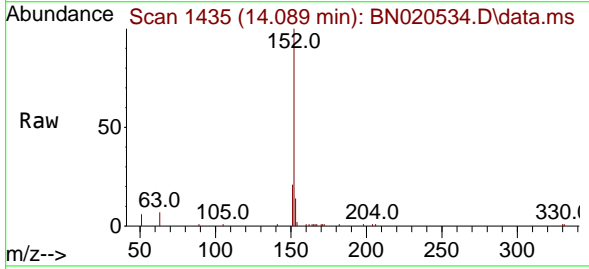
Ion	Ratio	Lower	Upper
172	100		
171	34.1	27.2	40.8
170	22.8	18.2	27.4

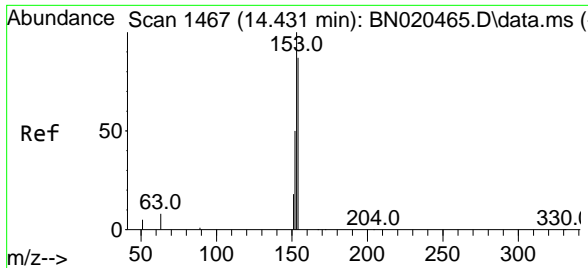


#16
 Acenaphthylene
 Concen: 0.368 ng
 RT: 14.089 min Scan# 1435
 Delta R.T. -0.000 min
 Lab File: BN020534.D
 Acq: 28 Jun 2022 15:20

Tgt Ion:152 Resp: 10640

Ion	Ratio	Lower	Upper
152	100		
151	19.6	16.2	24.4
153	13.1	10.7	16.1

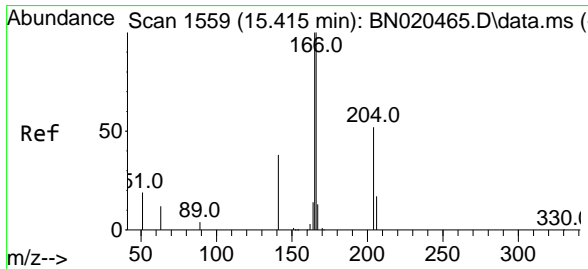
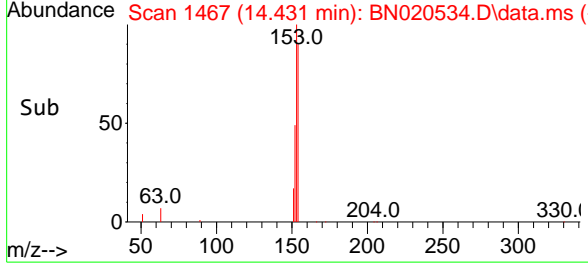
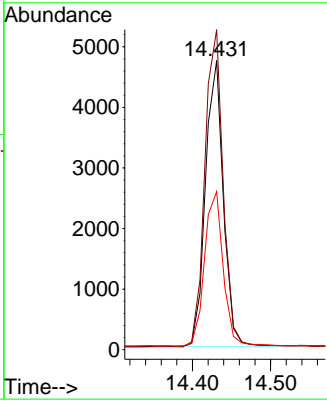
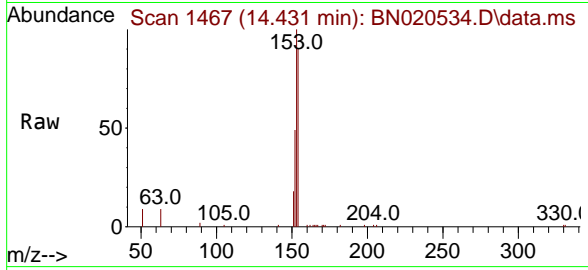




#17
 Acenaphthene
 Concen: 0.381 ng
 RT: 14.431 min Scan# 1467
 Delta R.T. -0.000 min
 Lab File: BN020534.D
 Acq: 28 Jun 2022 15:20

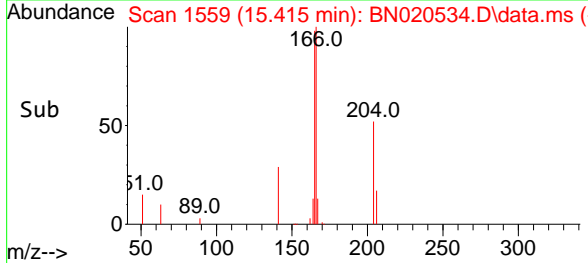
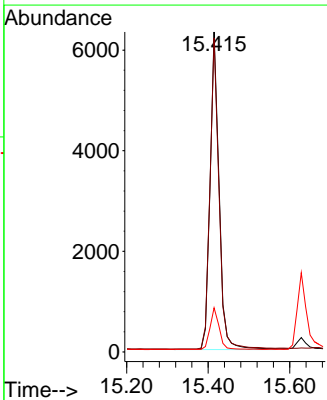
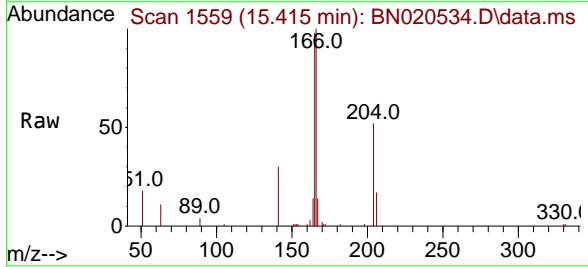
Instrument : BNA_N
 ClientSampleId : SSTDCCC0.4

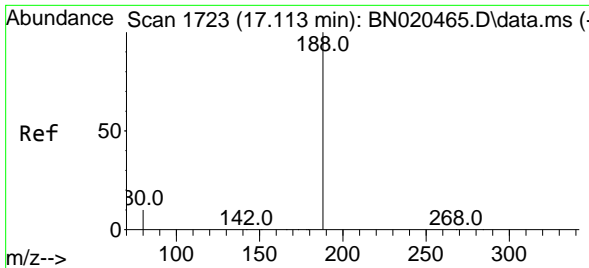
Tgt Ion	Resp	Lower	Upper
154	7495		
153	114.5	87.5	131.3
152	56.7	43.8	65.6



#18
 Fluorene
 Concen: 0.376 ng
 RT: 15.415 min Scan# 1559
 Delta R.T. -0.000 min
 Lab File: BN020534.D
 Acq: 28 Jun 2022 15:20

Tgt Ion	Resp	Lower	Upper
166	9639		
165	98.1	78.6	118.0
167	13.3	10.8	16.2



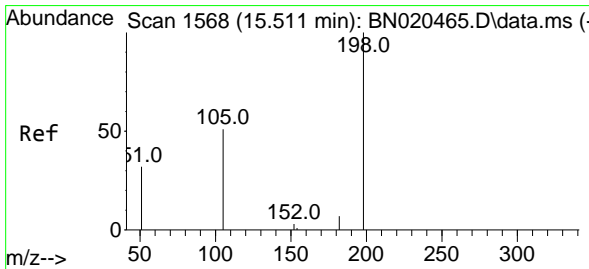
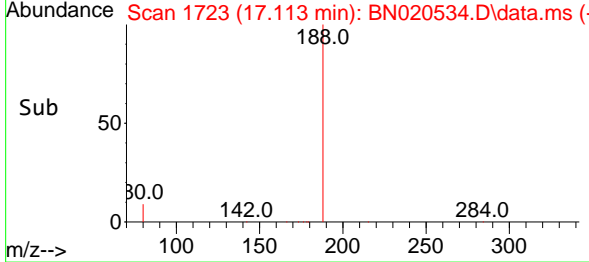
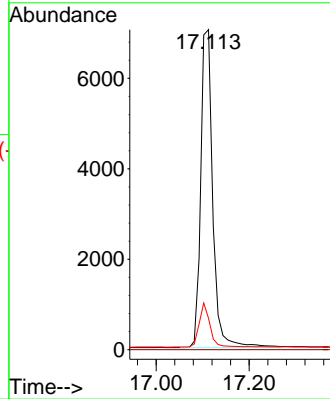
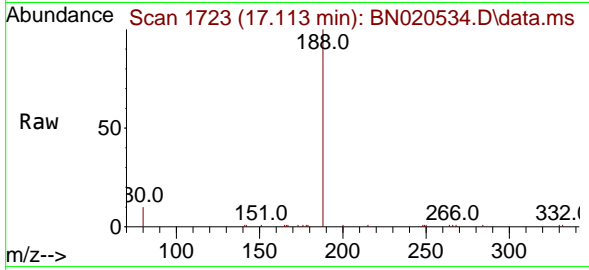


#19
 Phenanthrene-d10
 Concen: 0.400 ng
 RT: 17.113 min Scan# 11
 Delta R.T. -0.000 min
 Lab File: BN020534.D
 Acq: 28 Jun 2022 15:20

Instrument :
 BNA_N
 ClientSampleId :
 SSTDCCC0.4

Tgt Ion:188 Resp: 12652

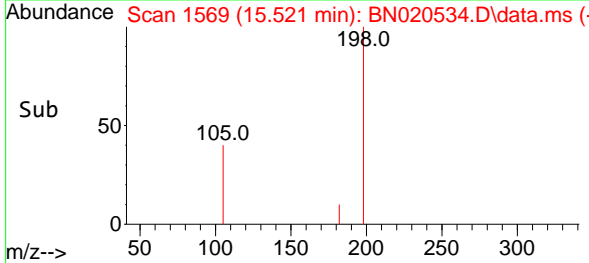
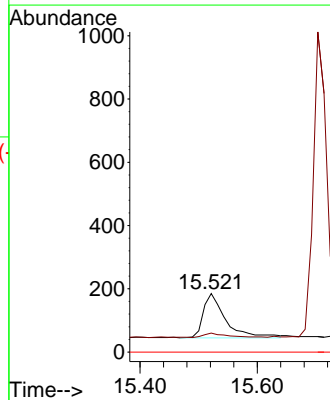
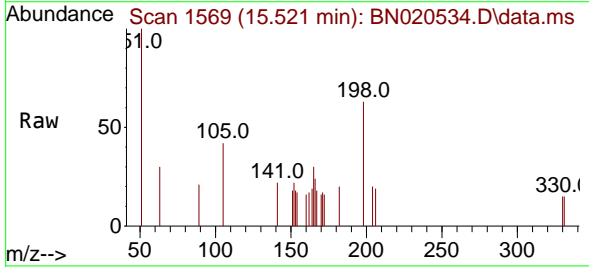
Ion	Ratio	Lower	Upper
188	100		
94	0.0	0.0	0.0
80	9.8	7.4	11.2

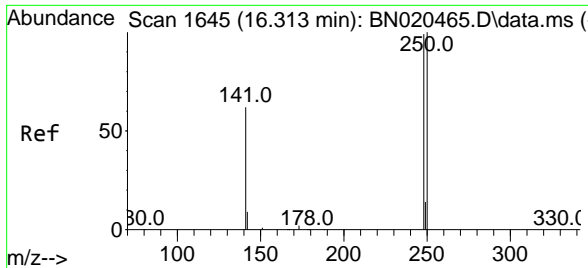


#20
 4,6-Dinitro-2-methylphenol
 Concen: 0.375 ng
 RT: 15.521 min Scan# 1569
 Delta R.T. 0.010 min
 Lab File: BN020534.D
 Acq: 28 Jun 2022 15:20

Tgt Ion:198 Resp: 371

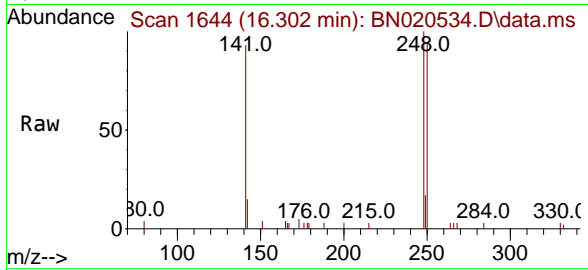
Ion	Ratio	Lower	Upper
198	100		
182	32.4	12.1	18.1#
77	0.0	0.0	0.0



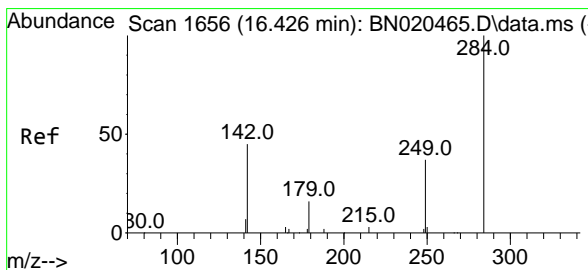
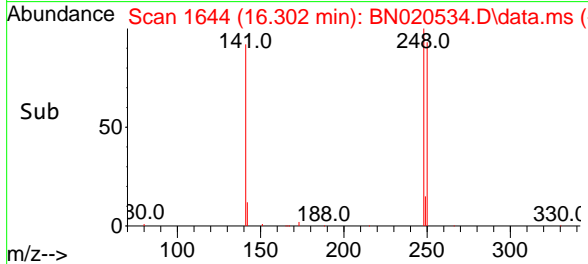
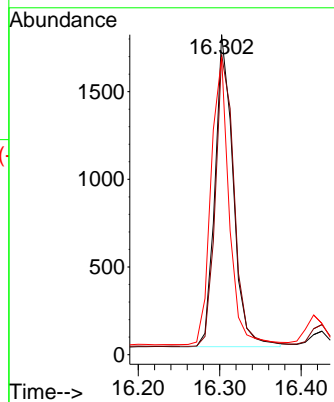


#21
 4-Bromophenyl-phenylether
 Concen: 0.374 ng
 RT: 16.302 min Scan# 1644
 Delta R.T. -0.010 min
 Lab File: BN020534.D
 Acq: 28 Jun 2022 15:20

Instrument :
 BNA_N
 ClientSampleId :
 SSTDCCC0.4

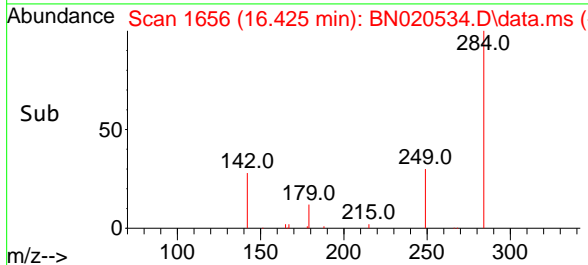
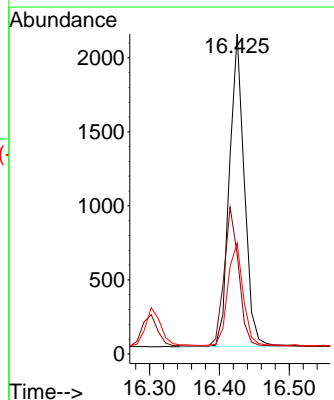
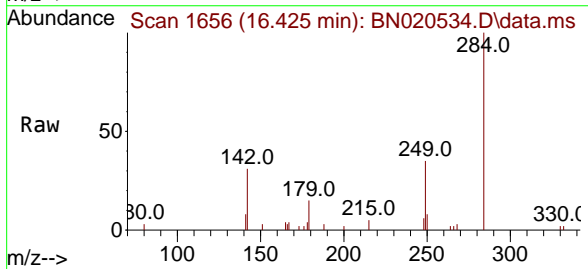


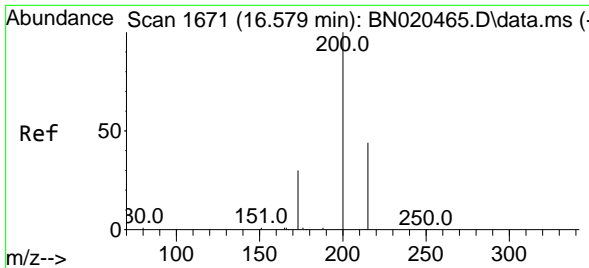
Tgt Ion:248 Resp: 2749
 Ion Ratio Lower Upper
 248 100
 250 93.8 75.3 112.9
 141 92.9 67.3 100.9



#22
 Hexachlorobenzene
 Concen: 0.385 ng
 RT: 16.425 min Scan# 1656
 Delta R.T. -0.000 min
 Lab File: BN020534.D
 Acq: 28 Jun 2022 15:20

Tgt Ion:284 Resp: 3135
 Ion Ratio Lower Upper
 284 100
 142 43.3 35.2 52.8
 249 33.7 26.6 40.0

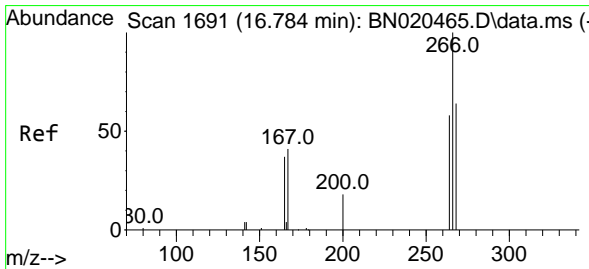
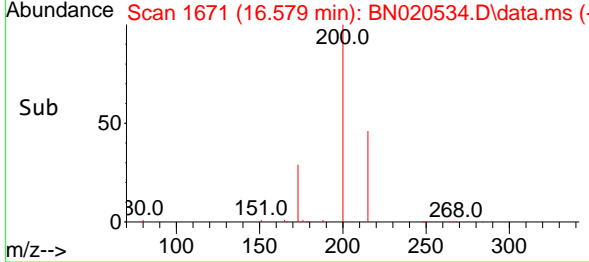
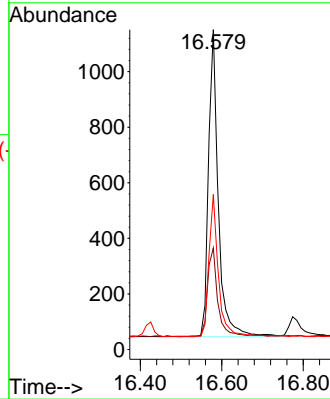
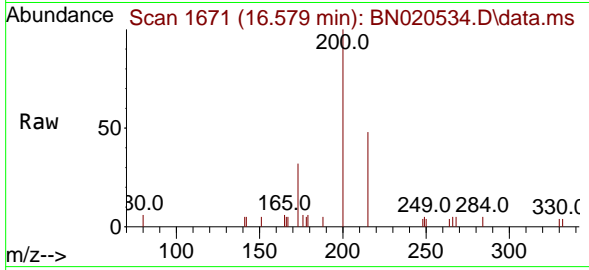




#23
 Atrazine
 Concen: 0.320 ng
 RT: 16.579 min Scan# 1671
 Delta R.T. -0.000 min
 Lab File: BN020534.D
 Acq: 28 Jun 2022 15:20

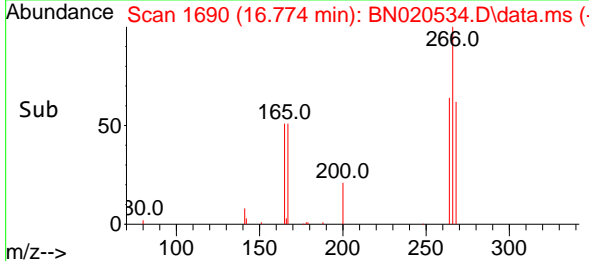
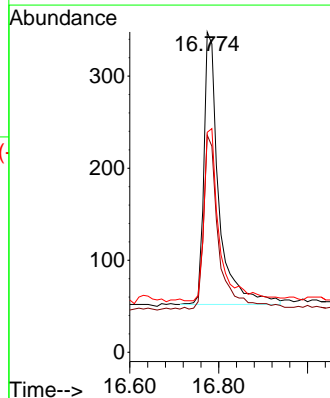
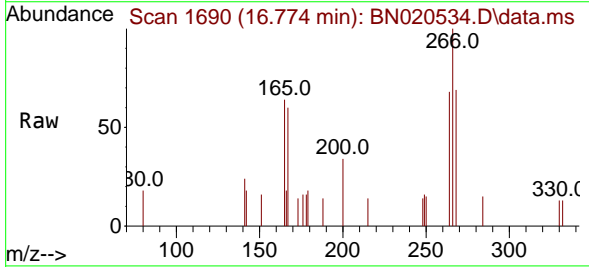
Instrument : BNA_N
 ClientSampleId : SSTDCCC0.4

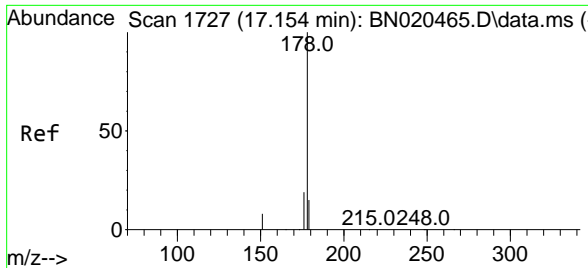
Tgt Ion	Resp	Lower	Upper
200	1855		
173	31.8	23.6	35.4
215	48.5	36.6	54.8



#24
 Pentachlorophenol
 Concen: 0.448 ng
 RT: 16.774 min Scan# 1690
 Delta R.T. -0.010 min
 Lab File: BN020534.D
 Acq: 28 Jun 2022 15:20

Tgt Ion	Resp	Lower	Upper
266	691		
264	64.8	51.3	76.9
268	64.3	52.6	79.0

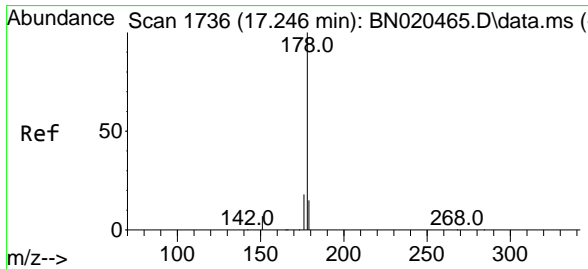
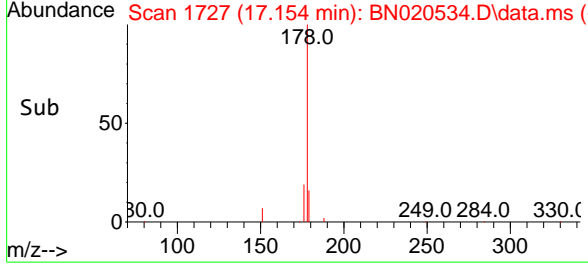
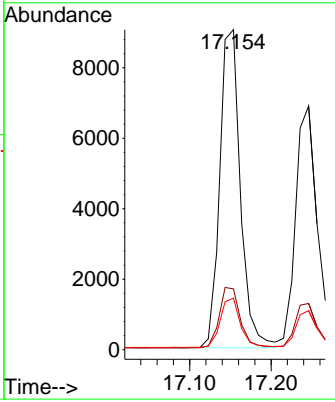
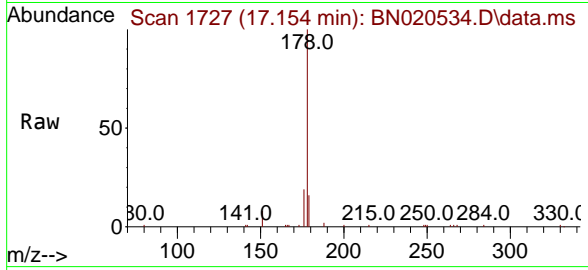




#25
 Phenanthrene
 Concen: 0.374 ng
 RT: 17.154 min Scan# 1727
 Delta R.T. -0.000 min
 Lab File: BN020534.D
 Acq: 28 Jun 2022 15:20

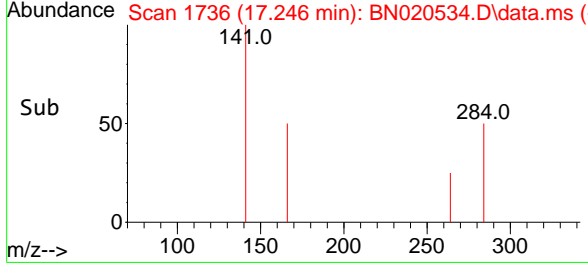
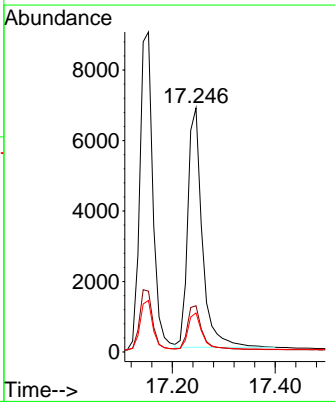
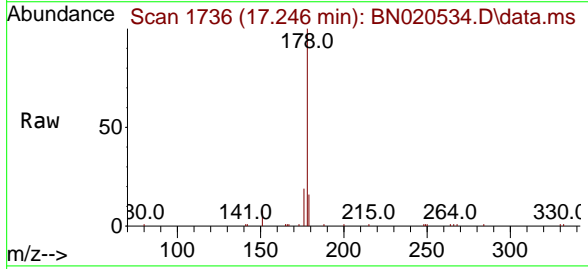
Instrument : BNA_N
 ClientSampleId : SSTDCCC0.4

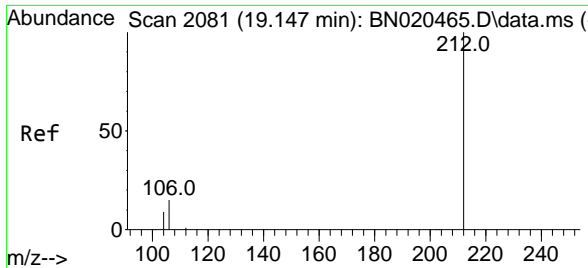
Tgt Ion	Resp	Lower	Upper
178	15936		
176	19.3	15.3	22.9
179	15.3	12.2	18.4



#26
 Anthracene
 Concen: 0.361 ng
 RT: 17.246 min Scan# 1736
 Delta R.T. -0.000 min
 Lab File: BN020534.D
 Acq: 28 Jun 2022 15:20

Tgt Ion	Resp	Lower	Upper
178	13275		
176	18.4	14.9	22.3
179	14.8	12.2	18.4



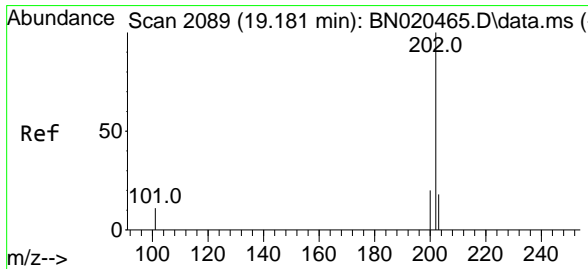
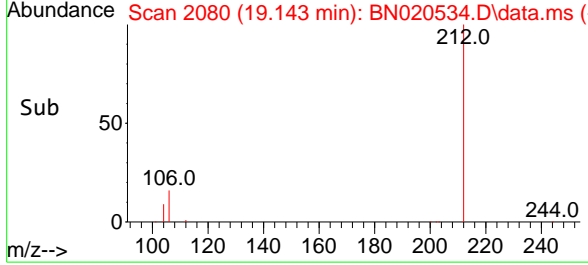
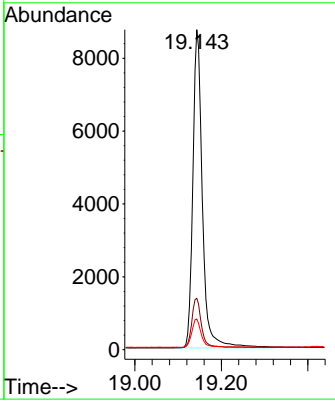
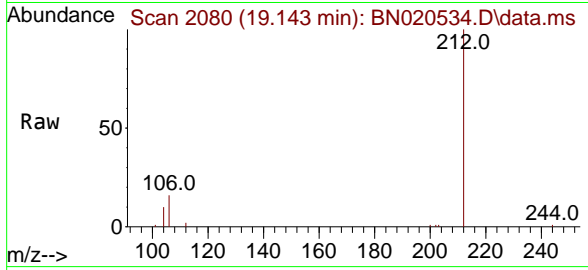


#27
 Fluoranthene-d10
 Concen: 0.357 ng
 RT: 19.143 min Scan# 2080
 Delta R.T. -0.004 min
 Lab File: BN020534.D
 Acq: 28 Jun 2022 15:20

Instrument : BNA_N
 ClientSampleId : SSTDCCC0.4

Tgt Ion:212 Resp: 13421

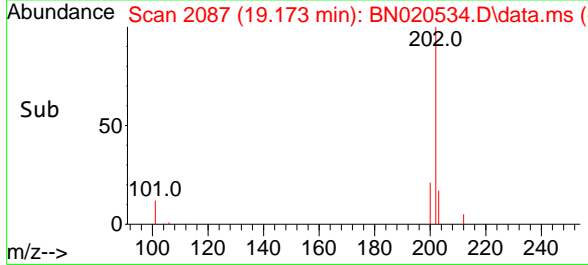
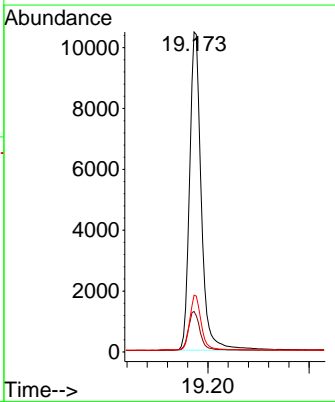
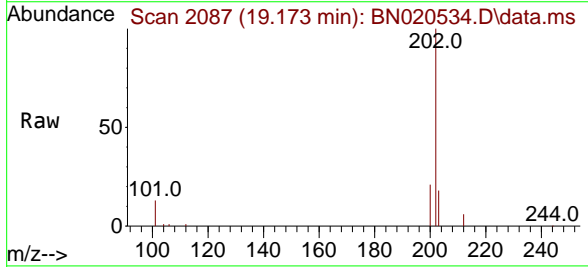
Ion	Ratio	Lower	Upper
212	100		
106	15.5	12.6	19.0
104	8.8	7.2	10.8

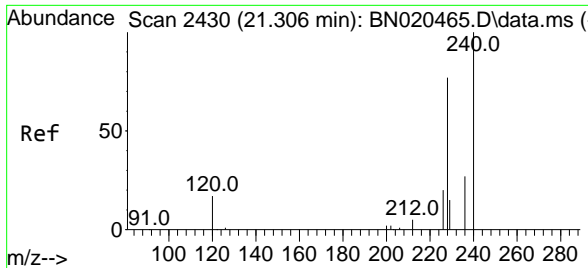


#28
 Fluoranthene
 Concen: 0.359 ng
 RT: 19.173 min Scan# 2087
 Delta R.T. -0.008 min
 Lab File: BN020534.D
 Acq: 28 Jun 2022 15:20

Tgt Ion:202 Resp: 16723

Ion	Ratio	Lower	Upper
202	100		
101	12.6	9.6	14.4
203	16.9	13.5	20.3



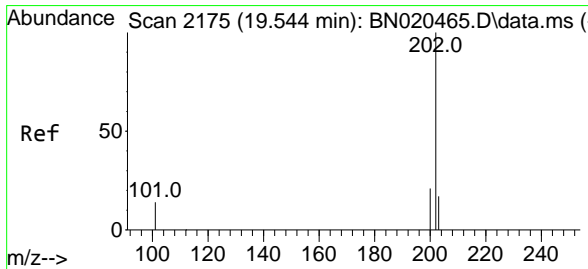
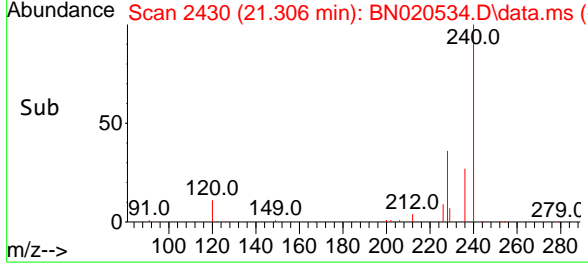
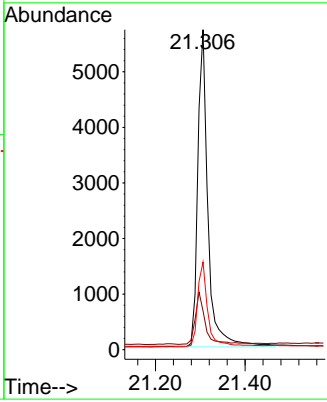
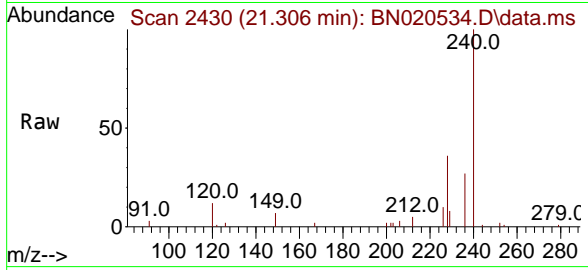


#29
 Chrysene-d12
 Concen: 0.400 ng
 RT: 21.306 min Scan# 24
 Delta R.T. -0.000 min
 Lab File: BN020534.D
 Acq: 28 Jun 2022 15:20

Instrument : BNA_N
 ClientSampleId : SSTDCCC0.4

Tgt Ion:240 Resp: 8977

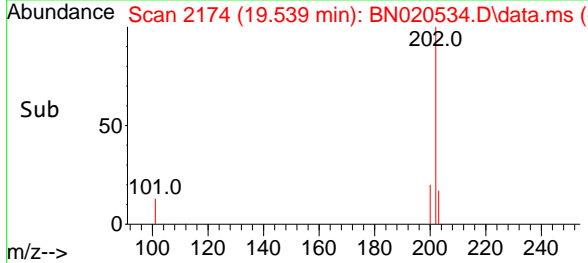
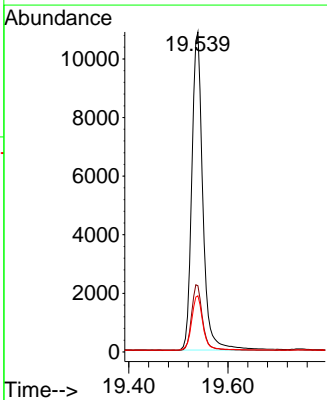
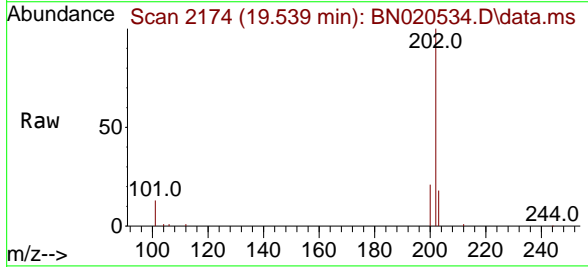
Ion	Ratio	Lower	Upper
240	100		
120	12.1	14.6	21.8#
236	27.4	22.6	33.8

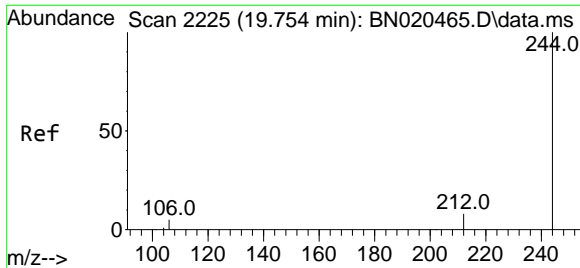


#30
 Pyrene
 Concen: 0.443 ng
 RT: 19.539 min Scan# 2174
 Delta R.T. -0.004 min
 Lab File: BN020534.D
 Acq: 28 Jun 2022 15:20

Tgt Ion:202 Resp: 16837

Ion	Ratio	Lower	Upper
202	100		
200	20.8	16.6	25.0
203	17.9	14.2	21.2

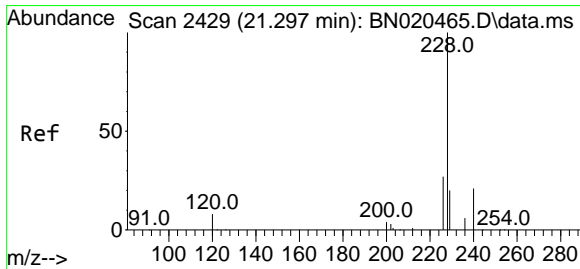
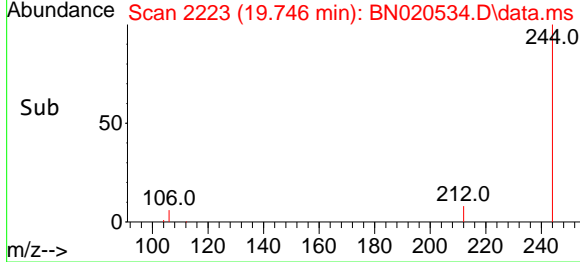
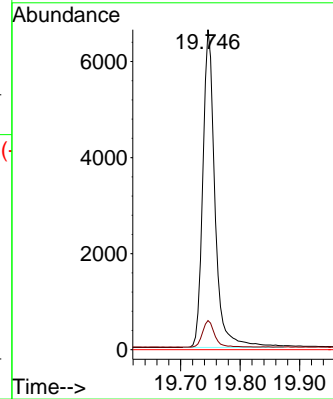
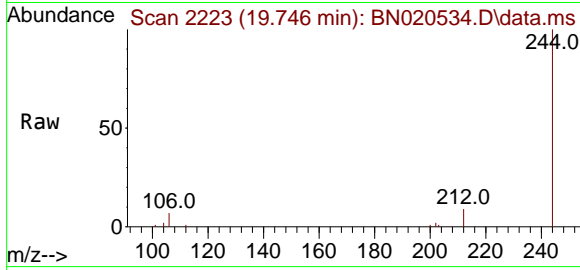




#31
 Terphenyl-d14
 Concen: 0.440 ng
 RT: 19.746 min Scan# 21
 Delta R.T. -0.008 min
 Lab File: BN020534.D
 Acq: 28 Jun 2022 15:20

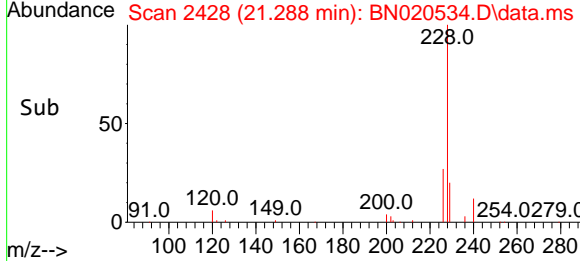
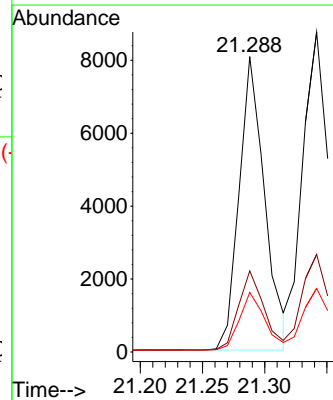
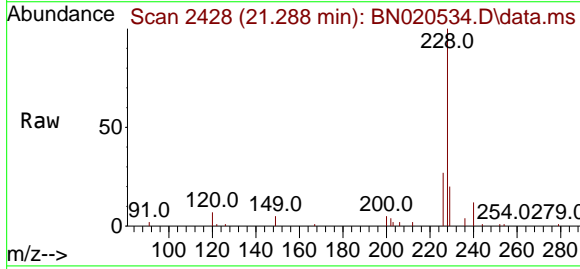
Instrument : BNA_N
 ClientSampleId : SSTDCCC0.4

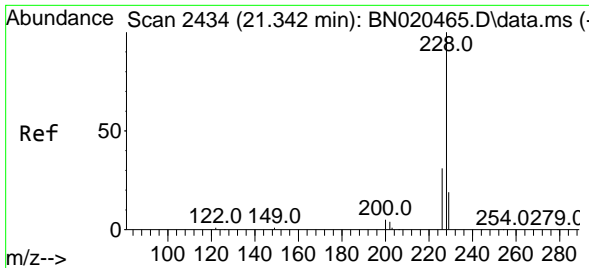
Tgt Ion	Resp	Lower	Upper
244	100		
212	9.1	7.1	10.7
122	0.0	0.0	0.0



#32
 Benzo(a)anthracene
 Concen: 0.359 ng
 RT: 21.288 min Scan# 2428
 Delta R.T. -0.009 min
 Lab File: BN020534.D
 Acq: 28 Jun 2022 15:20

Tgt Ion	Resp	Lower	Upper
228	100		
226	27.5	21.2	31.8
229	20.2	15.6	23.4

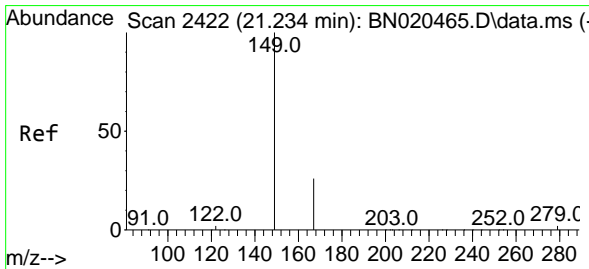
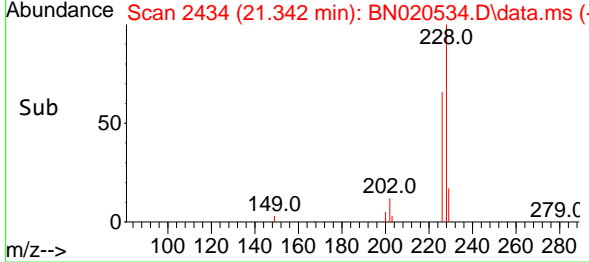
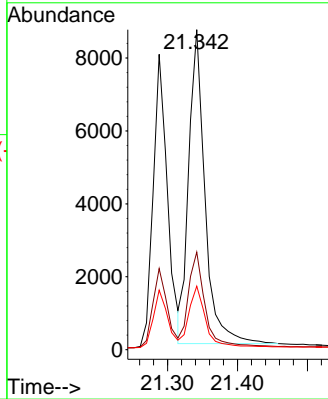
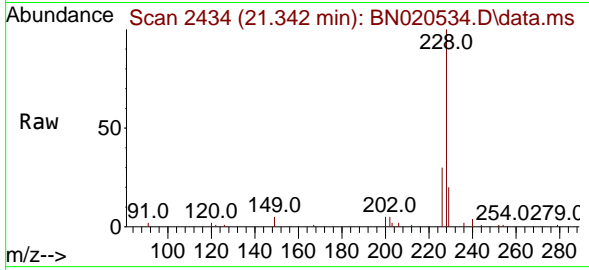




#33
 Chrysene
 Concen: 0.391 ng
 RT: 21.342 min Scan# 241
 Delta R.T. -0.000 min
 Lab File: BN020534.D
 Acq: 28 Jun 2022 15:20

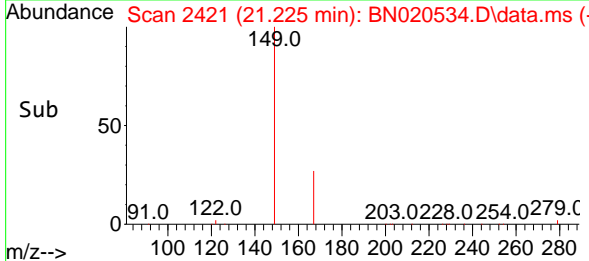
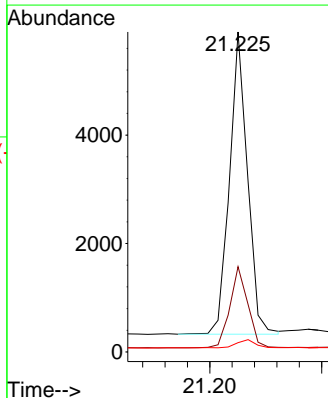
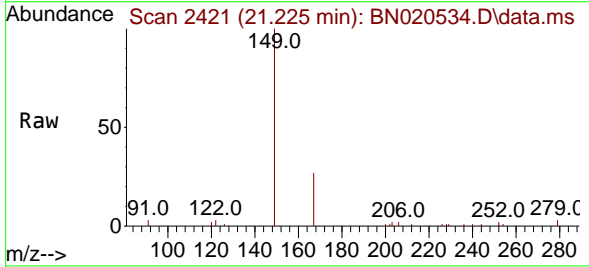
Instrument :
 BNA_N
 ClientSampleId :
 SSTDCCC0.4

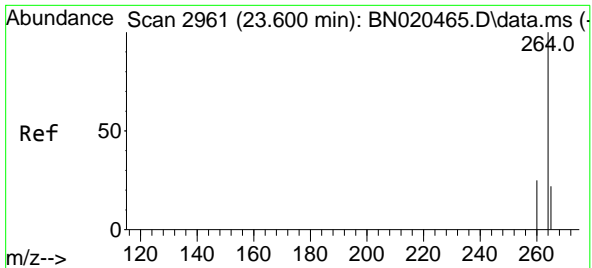
Tgt Ion	Resp	Lower	Upper
228	13869		
226	30.5	23.4	35.0
229	19.9	15.7	23.5



#34
 Bis(2-ethylhexyl)phthalate
 Concen: 0.345 ng
 RT: 21.225 min Scan# 2421
 Delta R.T. -0.009 min
 Lab File: BN020534.D
 Acq: 28 Jun 2022 15:20

Tgt Ion	Resp	Lower	Upper
149	6229		
167	27.0	21.7	32.5
279	2.8	2.2	3.2



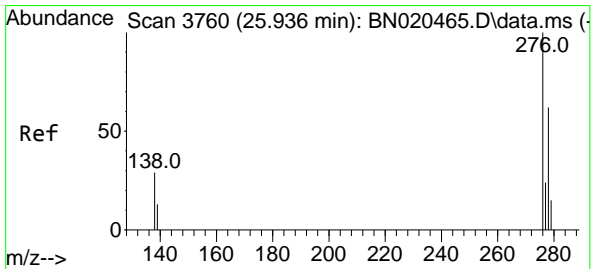
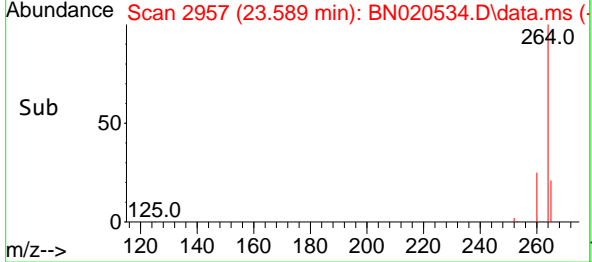
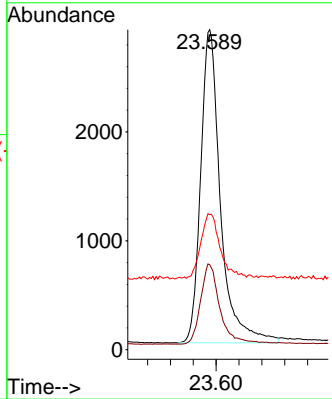
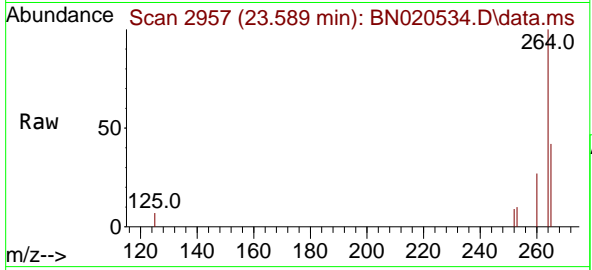


#35
 Perylene-d12
 Concen: 0.400 ng
 RT: 23.589 min Scan# 2957
 Delta R.T. -0.012 min
 Lab File: BN020534.D
 Acq: 28 Jun 2022 15:20

Instrument : BNA_N
 ClientSampleId : SSTDCCC0.4

Tgt Ion:264 Resp: 6926

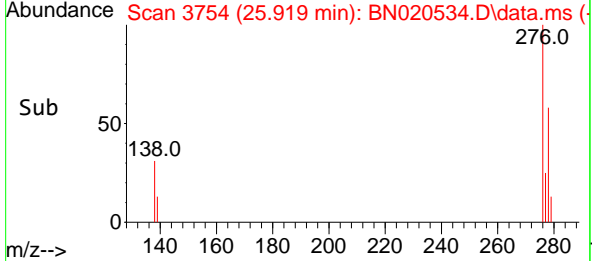
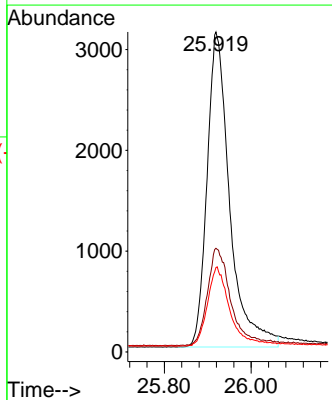
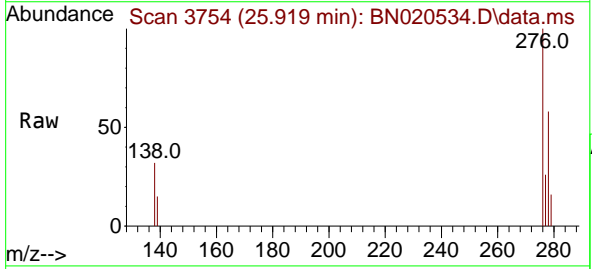
Ion	Ratio	Lower	Upper
264	100		
260	26.6	20.9	31.3
265	42.2	28.0	42.0#

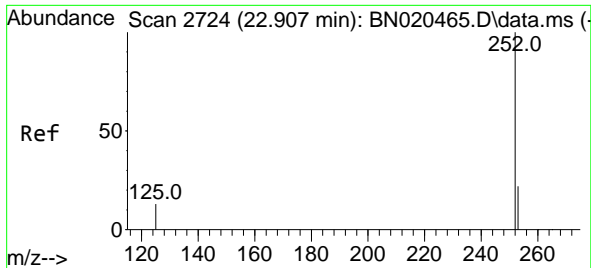


#36
 Indeno(1,2,3-cd)pyrene
 Concen: 0.368 ng
 RT: 25.919 min Scan# 3754
 Delta R.T. -0.018 min
 Lab File: BN020534.D
 Acq: 28 Jun 2022 15:20

Tgt Ion:276 Resp: 11342

Ion	Ratio	Lower	Upper
276	100		
138	31.4	25.9	38.9
277	24.7	19.8	29.8

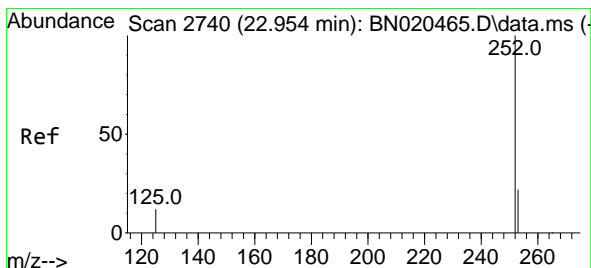
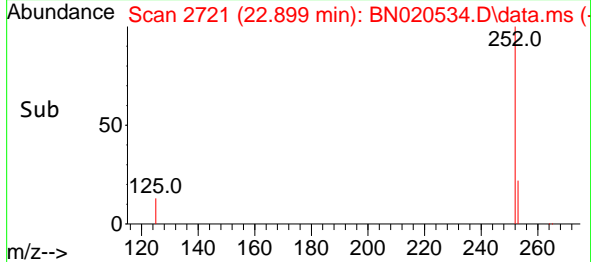
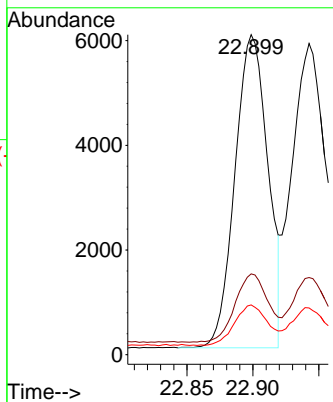
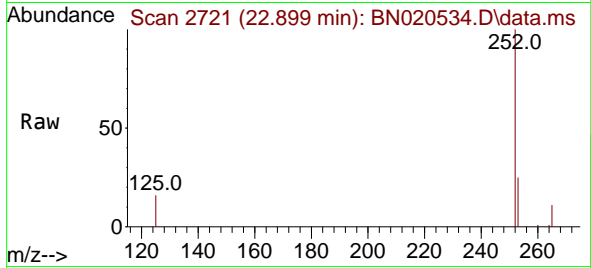




#37
 Benzo(b)fluoranthene
 Concen: 0.389 ng
 RT: 22.899 min Scan# 2721
 Delta R.T. -0.009 min
 Lab File: BN020534.D
 Acq: 28 Jun 2022 15:20

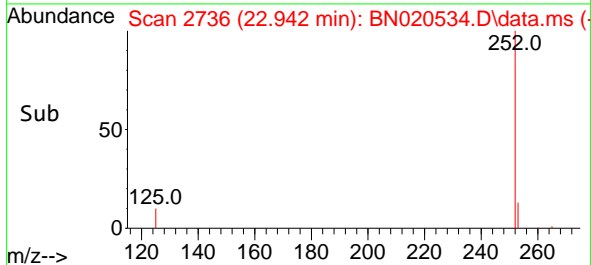
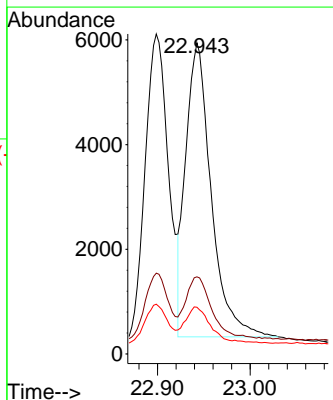
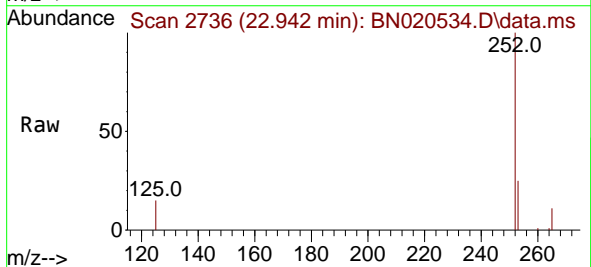
Instrument : BNA_N
 ClientSampleId : SSTDCCC0.4

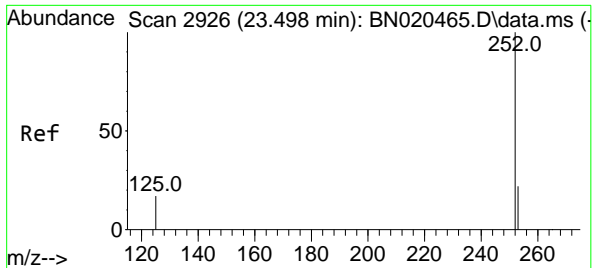
Tgt Ion	Resp	Lower	Upper
252	10389		
253	25.3	18.5	27.7
125	15.5	11.4	17.0



#38
 Benzo(k)fluoranthene
 Concen: 0.377 ng
 RT: 22.942 min Scan# 2736
 Delta R.T. -0.012 min
 Lab File: BN020534.D
 Acq: 28 Jun 2022 15:20

Tgt Ion	Resp	Lower	Upper
252	10716		
253	24.8	18.0	27.0
125	15.0	11.0	16.4



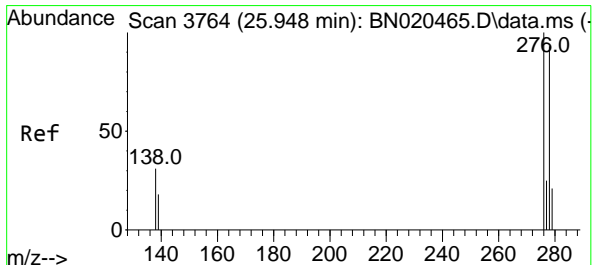
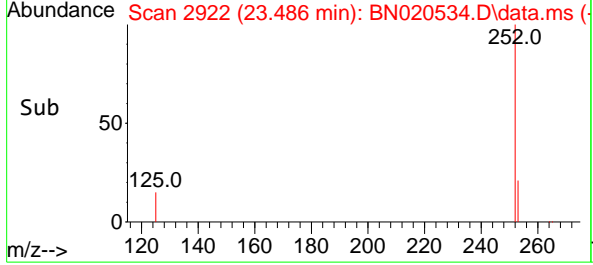
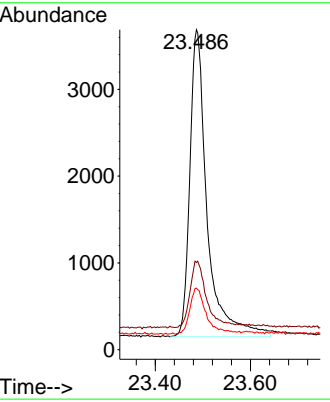
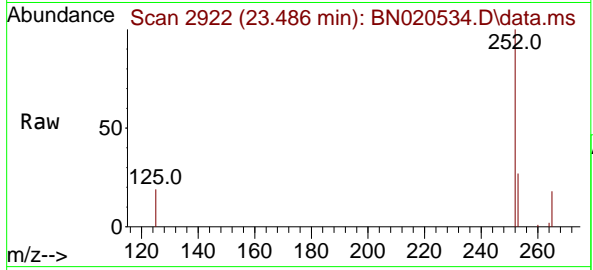


#39
 Benzo(a)pyrene
 Concen: 0.386 ng
 RT: 23.486 min Scan# 2926
 Delta R.T. -0.012 min
 Lab File: BN020534.D
 Acq: 28 Jun 2022 15:20

Instrument : BNA_N
 ClientSampleId : SSTDCCC0.4

Tgt Ion:252 Resp: 8930

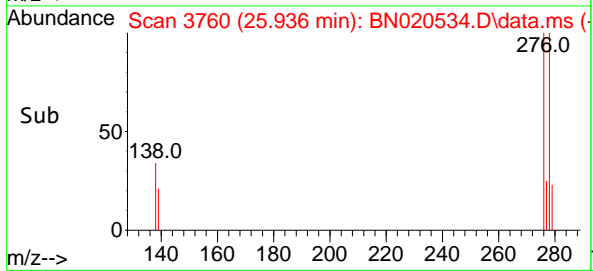
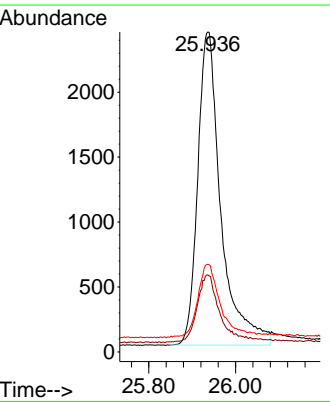
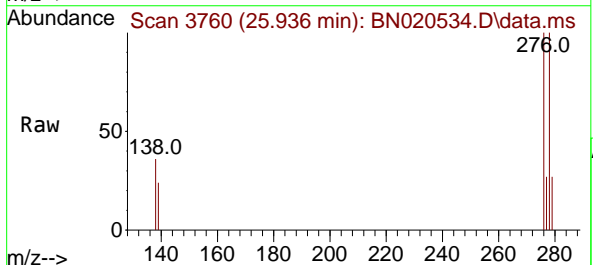
Ion	Ratio	Lower	Upper
252	100		
253	27.3	19.0	28.4
125	19.3	13.8	20.8

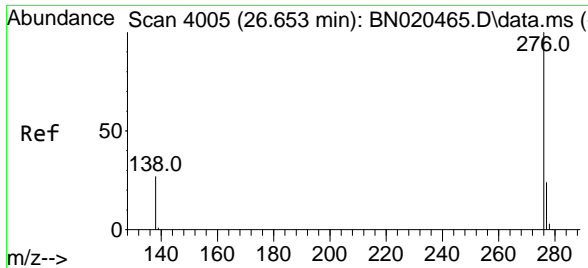


#40
 Dibenzo(a,h)anthracene
 Concen: 0.361 ng
 RT: 25.936 min Scan# 3760
 Delta R.T. -0.012 min
 Lab File: BN020534.D
 Acq: 28 Jun 2022 15:20

Tgt Ion:278 Resp: 8935

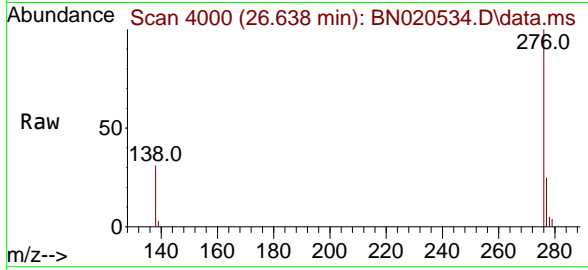
Ion	Ratio	Lower	Upper
278	100		
139	24.1	18.6	28.0
279	27.4	19.7	29.5





#41
 Benzo(g,h,i)perylene
 Concen: 0.377 ng
 RT: 26.638 min Scan# 40
 Delta R.T. -0.015 min
 Lab File: BN020534.D
 Acq: 28 Jun 2022 15:20

Instrument :
 BNA_N
 ClientSampleId :
 SSTDCCC0.4



Tgt Ion: 276 Resp: 10179

Ion	Ratio	Lower	Upper
276	100		
277	24.9	19.5	29.3
138	30.6	22.6	34.0

