

Data Path : Z:\svoasrv\HPCHEM1\BNA N\Data\BN070620\
 Data File : BN011106.D
 Acq On : 06 Jul 2020 15:53
 Operator : CG/JU
 Sample : SSTDCCC0.4
 Misc :
 ALS Vial : 2 Sample Multiplier: 1

Instrument :
 BNA_N
 ClientSampleId :
 SSTDCCC0.4EC

Quant Time: Jul 06 16:33:18 2020
 Quant Method : Z:\SVOASRV\HPCHEM1\BNA N\METHODS\8270-SIM-BN063020.M
 Quant Title : ASP BNA STANDARDS FOR 5 POINT CALIBRATION
 QLast Update : Mon Jul 06 12:31:54 2020
 Response via : Initial Calibration

Internal Standards	R.T.	QIon	Response	Conc	Units	Dev(Min)
1) 1,4-Dichlorobenzene-d4	7.51	152	1741	0.40	ng	0.00
7) Naphthalene-d8	10.25	136	5139	0.40	ng	-0.01
13) Acenaphthene-d10	14.13	164	2692	0.40	ng	0.00
19) Phenanthrene-d10	16.89	188	5474	0.40	ng	0.00
29) Chrysene-d12	21.10	240	5096	0.40	ng	0.00
36) Perylene-d12	23.24	264	5026	0.40	ng	0.00

System Monitoring Compounds

4) 2-Fluorophenol	5.17	112	1667	0.38	ng	0.00
5) Phenol-d6	6.71	99	1918	0.39	ng	0.00
8) Nitrobenzene-d5	8.66	82	1935	0.44	ng	0.00
11) 2-Methylnaphthalene-d10	11.85	152	3546	0.40	ng	0.00
14) 2,4,6-Tribromophenol	15.64	330	473	0.42	ng	0.00
15) 2-Fluorobiphenyl	12.75	172	5229	0.41	ng	0.00
27) Fluoranthene-d10	18.93	212	6768	0.41	ng	0.00
31) Terphenyl-d14	19.55	244	5717	0.43	ng	0.00

Target Compounds

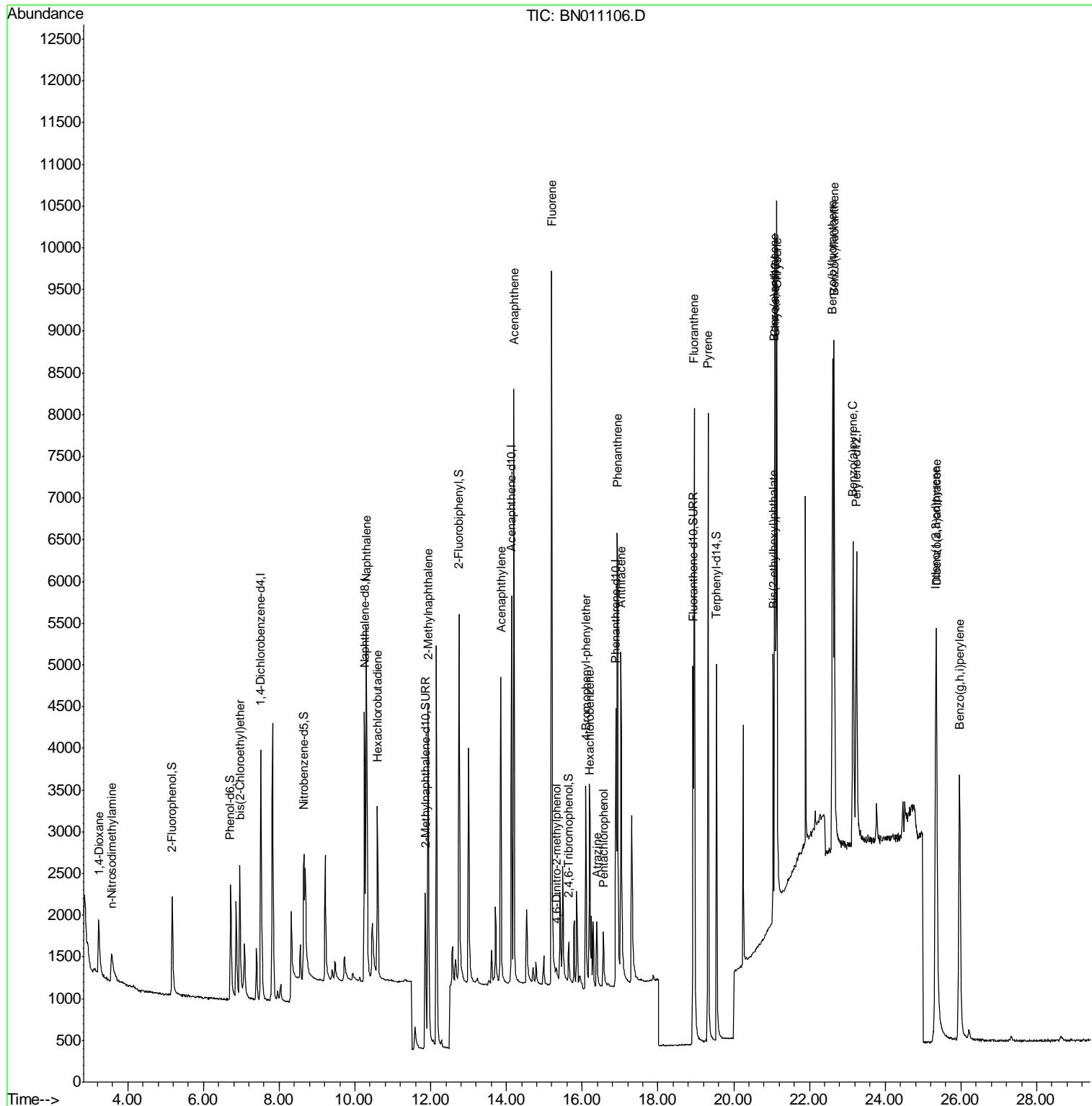
Target Compounds	R.T.	QIon	Response	Conc	Units	Qvalue
2) 1,4-Dioxane	3.23	88	949	0.387	ng	97
3) n-Nitrosodimethylamine	3.57	42	503	0.405	ng	# 86
6) bis(2-Chloroethyl)ether	6.96	93	1908	0.422	ng	91
9) Naphthalene	10.30	128	6137	0.400	ng	100
10) Hexachlorobutadiene	10.60	225	1644	0.423	ng	# 97
12) 2-Methylnaphthalene	11.93	142	3978	0.388	ng	94
16) Acenaphthylene	13.85	152	5337	0.395	ng	99
17) Acenaphthene	14.20	154	3701	0.405	ng	99
18) Fluorene	15.20	166	4607	0.403	ng	100
20) 4,6-Dinitro-2-methylphenol	15.31	198	231	0.395	ng	98
21) 4-Bromophenyl-phenylether	16.10	248	1499	0.412	ng	# 85
22) Hexachlorobenzene	16.20	284	1796	0.419	ng	99
23) Atrazine	16.39	200	1024	0.398	ng	99
24) Pentachlorophenol	16.56	266	473	0.410	ng	98
25) Phenanthrene	16.92	178	7096	0.400	ng	99
26) Anthracene	17.02	178	5779	0.394	ng	100
28) Fluoranthene	18.96	202	8019	0.402	ng	99
30) Pyrene	19.32	202	7979	0.420	ng	99
32) Benzo(a)anthracene	21.08	228	6599	0.388	ng	99
33) Chrysene	21.13	228	8118	0.415	ng	99
34) Bis(2-ethylhexyl)phthalate	21.04	149	2972	0.432	ng	98
35) Indeno(1,2,3-cd)pyrene	25.33	276	8064	0.395	ng	97
37) Benzo(b)fluoranthene	22.61	252	7730	0.384	ng	98
38) Benzo(k)fluoranthene	22.65	252	8926	0.414	ng	99
39) Benzo(a)pyrene	23.15	252	6911	0.398	ng	99
40) Dibenzo(a,h)anthracene	25.36	278	6139	0.345	ng	99
41) Benzo(g,h,i)perylene	25.96	276	7379	0.376	ng	99

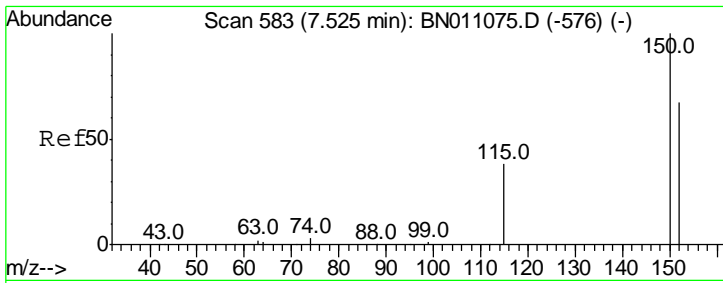
(#) = qualifier out of range (m) = manual integration (+) = signals summed

Data Path : Z:\svoasrv\HPCHEM1\BNA N\Data\BN070620\
 Data File : BN011106.D
 Acq On : 06 Jul 2020 15:53
 Operator : CG/JU
 Sample : SSTDCCC0.4
 Misc :
 ALS Vial : 2 Sample Multiplier: 1

Instrument :
 BNA_N
 Client Sampled :
 SSTDCCC0.4EC

Quant Time: Jul 06 16:33:18 2020
 Quant Method : Z:\SVOASRV\HPCHEM1\BNA N\METHODS\8270-SIM-BN063020.M
 Quant Title : ASP BNA STANDARDS FOR 5 POINT CALIBRATION
 QLast Update : Mon Jul 06 12:31:54 2020
 Response via : Initial Calibration

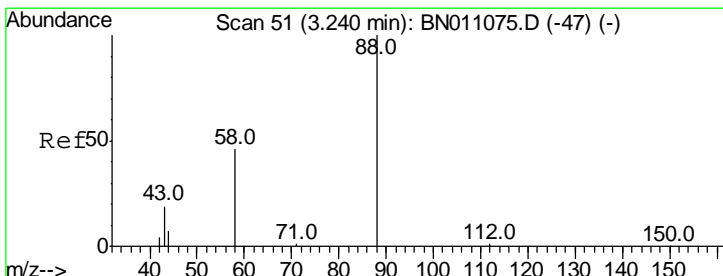
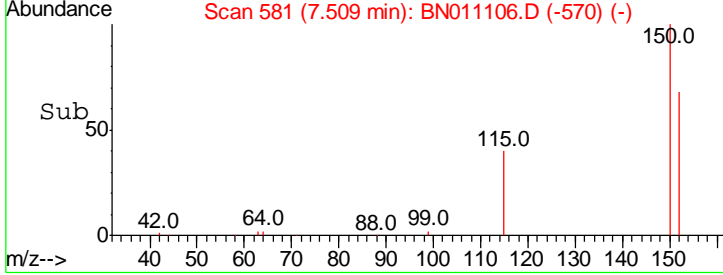
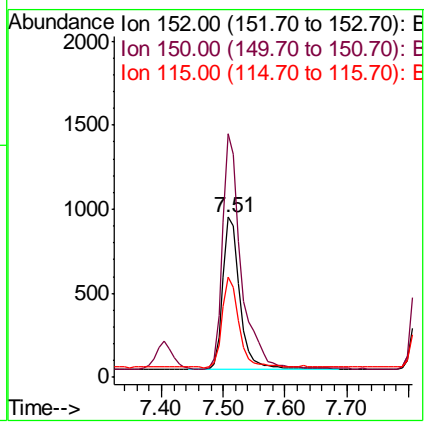
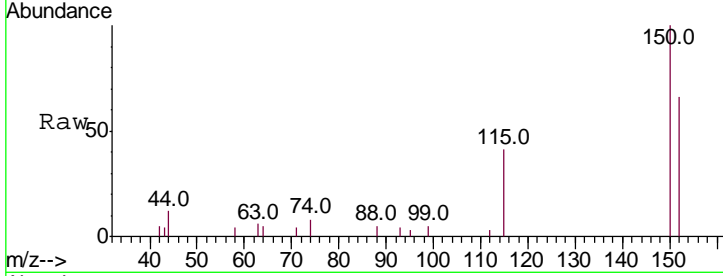




#1
 1,4-Dichlorobenzene-d4
 Concen: 0.400 ng
 RT: 7.51 min Scan# 581
 Delta R.T. -0.01 min
 Lab File: BN011106.D
 Acq: 06 Jul 2020 15:53

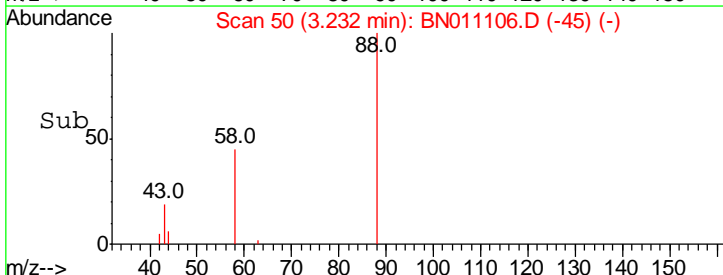
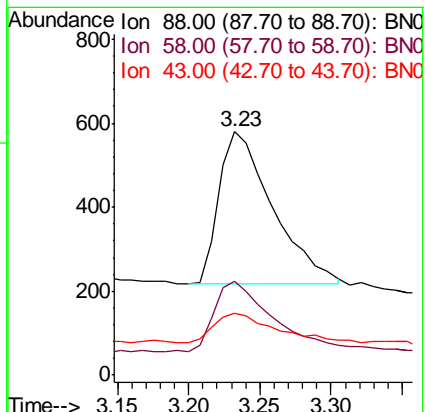
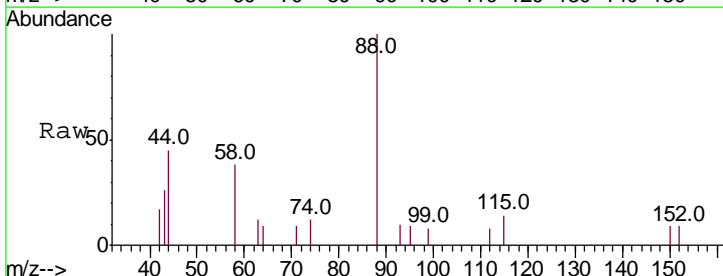
Instrument :
 BNA_N
 ClientSampleId :
 SSTDCCC0.4EC

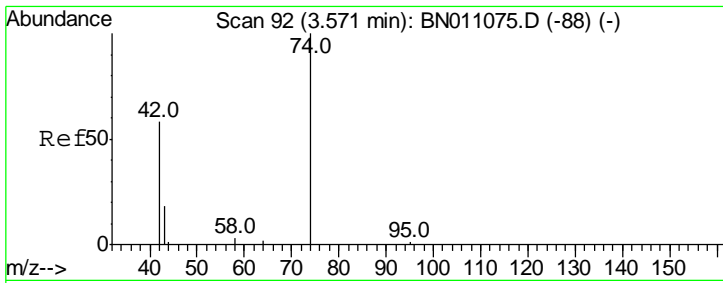
Tgt Ion	Resp	Lower	Upper
152	1741		
152	100		
150	152.3	117.4	176.0
115	62.9	47.9	71.9



#2
 1,4-Dioxane
 Concen: 0.387 ng
 RT: 3.23 min Scan# 50
 Delta R.T. -0.01 min
 Lab File: BN011106.D
 Acq: 06 Jul 2020 15:53

Tgt Ion	Resp	Lower	Upper
88	949		
88	100		
58	49.9	38.6	57.8
43	20.8	15.4	23.0

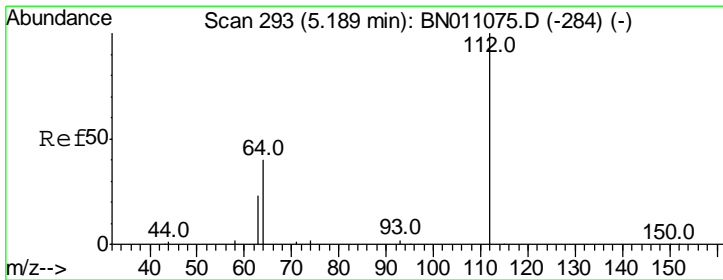
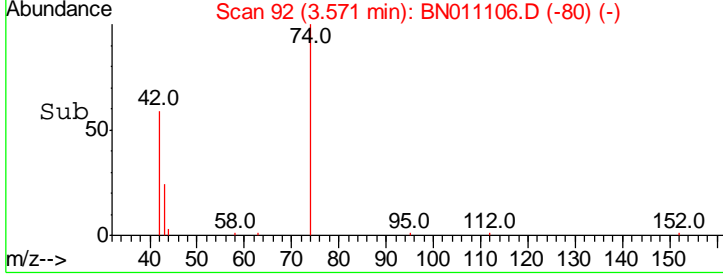
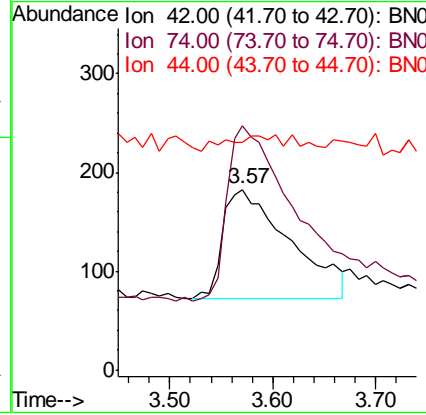
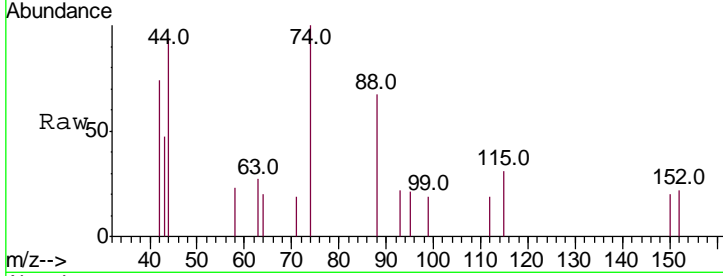




#3
 n-Nitrosodimethylamine
 Concen: 0.405 ng
 RT: 3.57 min Scan# 92
 Delta R.T. -0.00 min
 Lab File: BN011106.D
 Acq: 06 Jul 2020 15:53

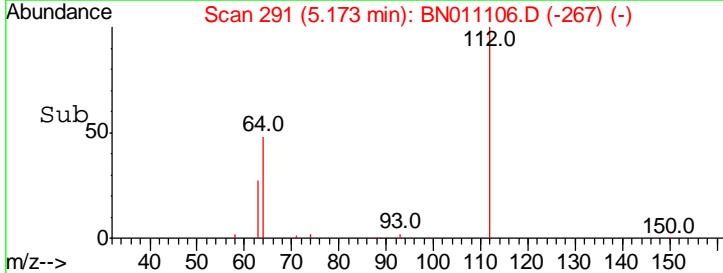
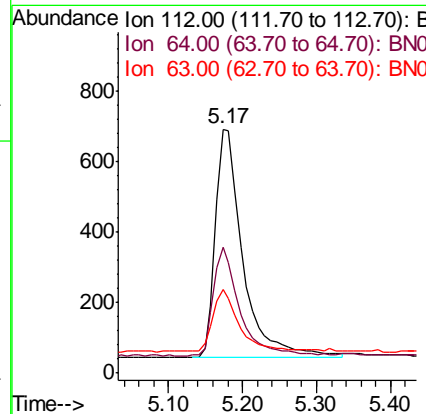
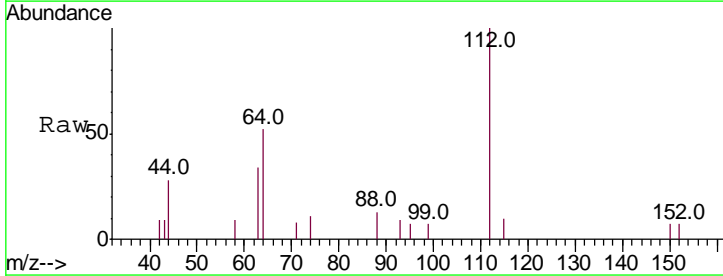
Instrument :
 BNA_N
ClientSampleId :
 SSTDCCC0.4EC

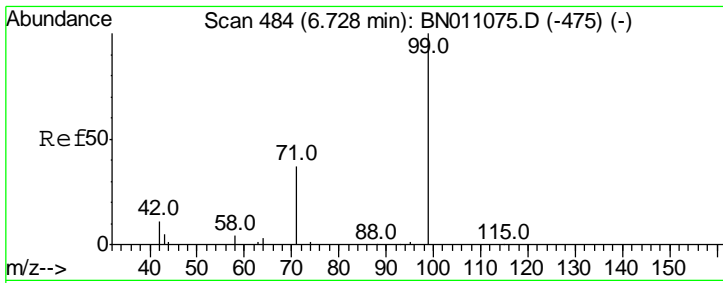
Tgt Ion	Resp	Lower	Upper
42	100		
74	158.6	142.5	213.7
44	0.0	0.0	0.0



#4
 2-Fluorophenol
 Concen: 0.385 ng
 RT: 5.17 min Scan# 291
 Delta R.T. -0.01 min
 Lab File: BN011106.D
 Acq: 06 Jul 2020 15:53

Tgt Ion	Resp	Lower	Upper
112	100		
64	45.7	36.5	54.7
63	25.5	20.6	30.8

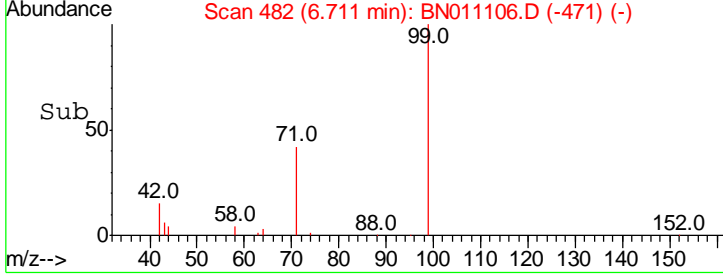
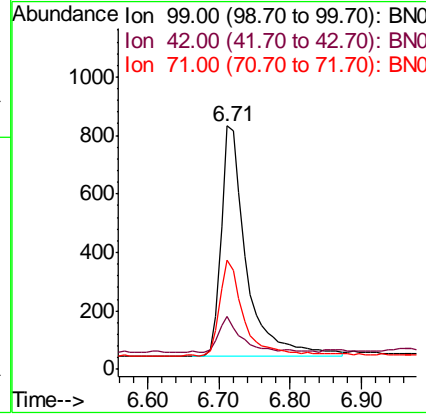
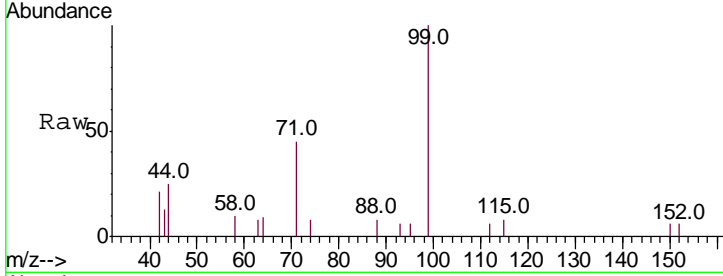




#5
 Phenol-d6
 Concen: 0.385 ng
 RT: 6.71 min Scan# 482
 Delta R.T. -0.01 min
 Lab File: BN011106.D
 Acq: 06 Jul 2020 15:53

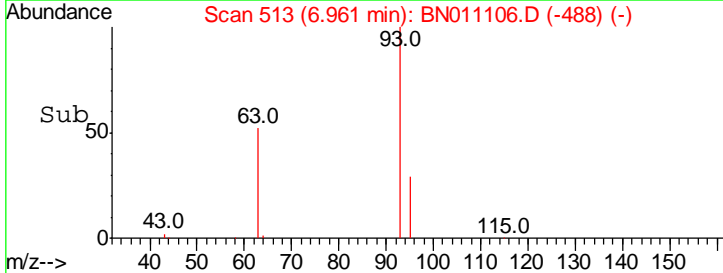
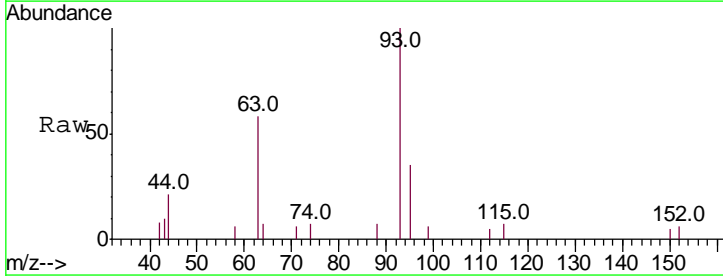
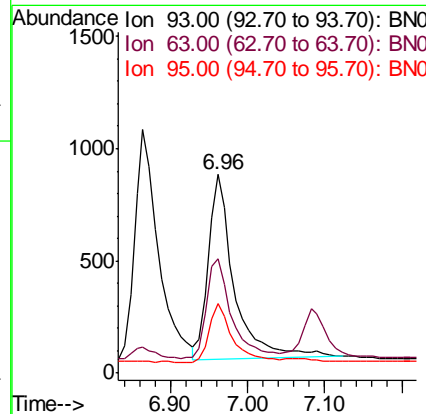
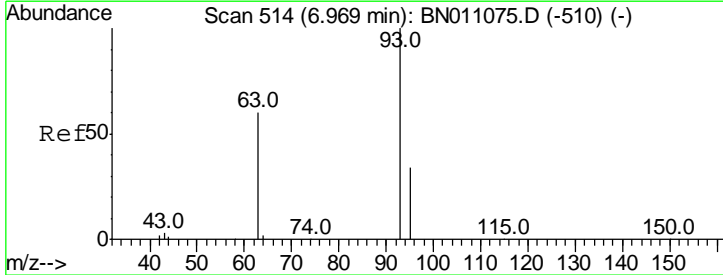
Instrument :
 BNA_N
ClientSampled :
 SSTDCCC0.4EC

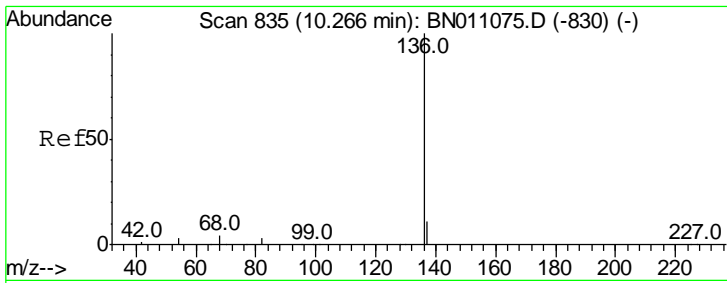
Tgt Ion	Resp	Lower	Upper
99	1918		
99	100		
42	14.8	9.8	14.8
71	39.2	30.7	46.1



#6
 bis(2-Chloroethyl)ether
 Concen: 0.422 ng
 RT: 6.96 min Scan# 513
 Delta R.T. -0.00 min
 Lab File: BN011106.D
 Acq: 06 Jul 2020 15:53

Tgt Ion	Resp	Lower	Upper
93	1908		
93	100		
63	52.1	47.4	71.2
95	29.2	26.4	39.6

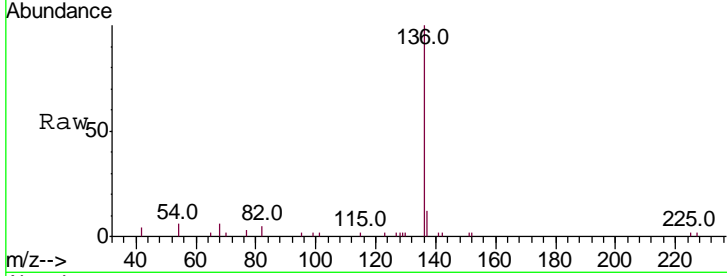




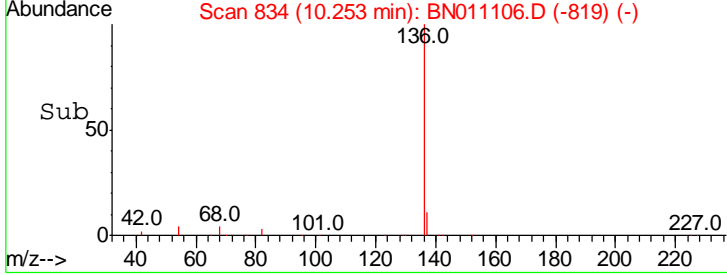
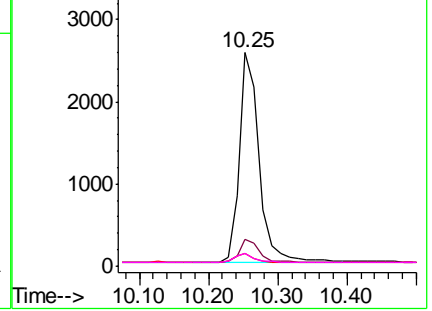
#7
 Naphthalene-d8
 Concen: 0.400 ng
 RT: 10.25 min Scan# 834
 Delta R.T. -0.01 min
 Lab File: BN011106.D
 Acq: 06 Jul 2020 15:53

Instrument :
 BNA_N
 ClientSampleId :
 SSTDCCC0.4EC

Tgt Ion	Resp	Lower	Upper
136	100		
137	12.4	9.6	14.4
54	6.1	3.8	5.6#
68	6.0	4.3	6.5

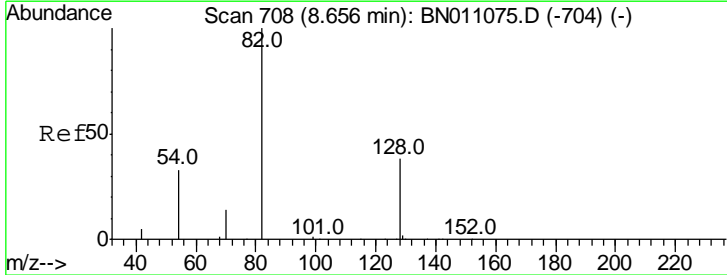


Abundance
 Ion 136.00 (135.70 to 136.70): E
 Ion 137.00 (136.70 to 137.70): E
 Ion 54.00 (53.70 to 54.70): BNC
 Ion 68.00 (67.70 to 68.70): BNC

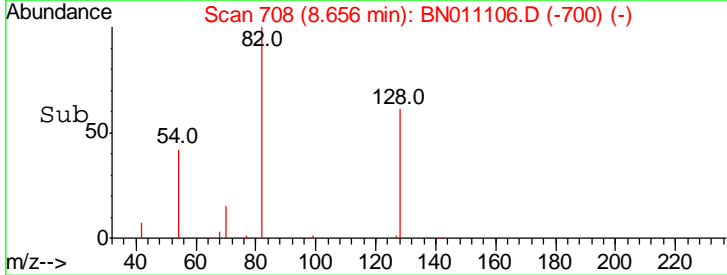
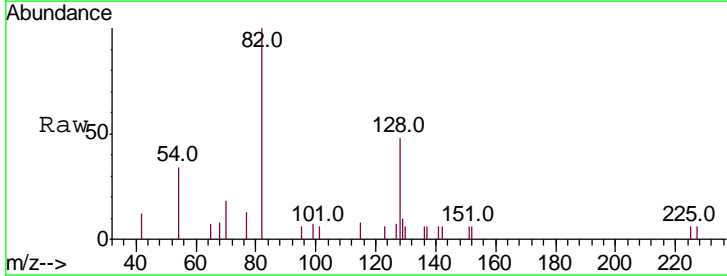
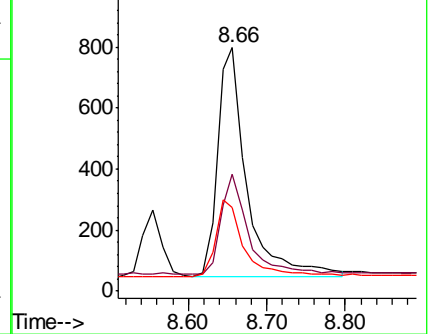


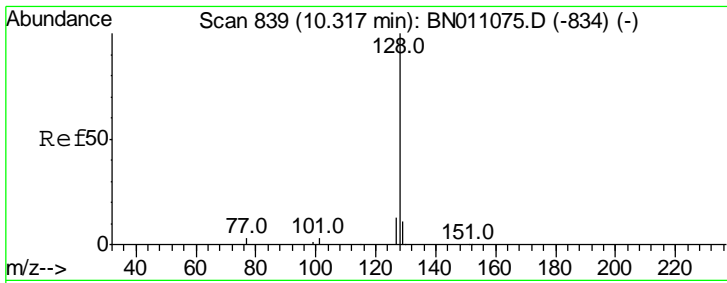
#8
 Nitrobenzene-d5
 Concen: 0.443 ng
 RT: 8.66 min Scan# 708
 Delta R.T. -0.00 min
 Lab File: BN011106.D
 Acq: 06 Jul 2020 15:53

Tgt Ion	Resp	Lower	Upper
82	100		
128	48.0	34.2	51.2
54	34.1	29.4	44.0



Abundance
 Ion 82.00 (81.70 to 82.70): BNC
 Ion 128.00 (127.70 to 128.70): E
 Ion 54.00 (53.70 to 54.70): BNC

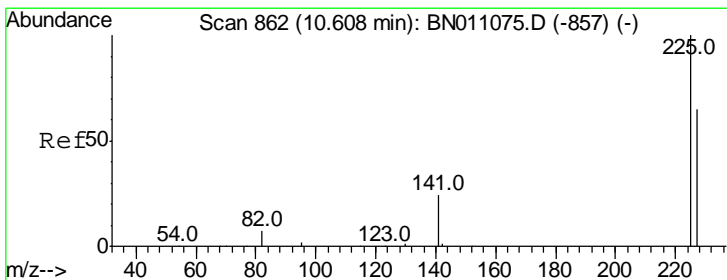
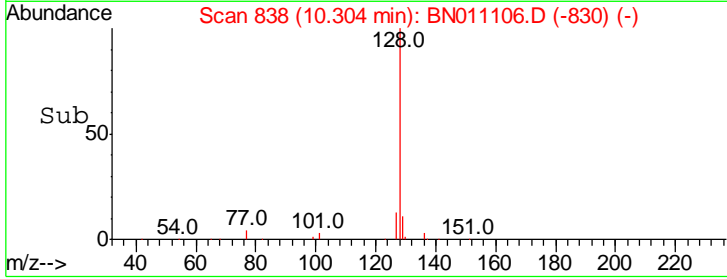
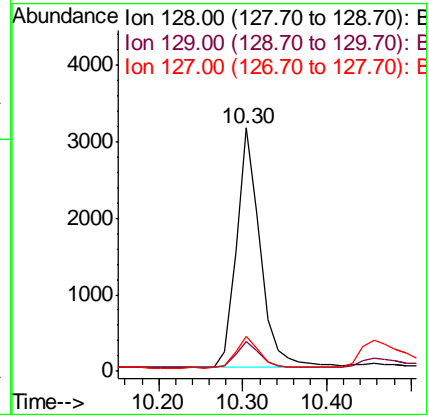
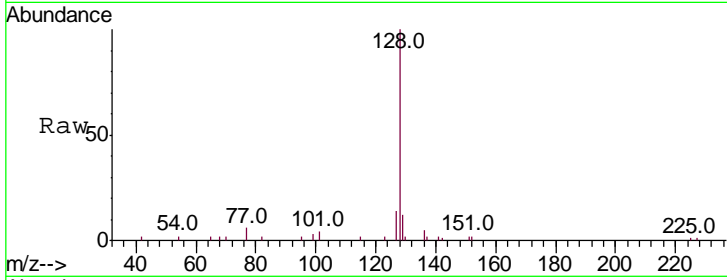




#9
 Naphthalene
 Concen: 0.400 ng
 RT: 10.30 min Scan# 838
 Delta R.T. -0.00 min
 Lab File: BN011106.D
 Acq: 06 Jul 2020 15:53

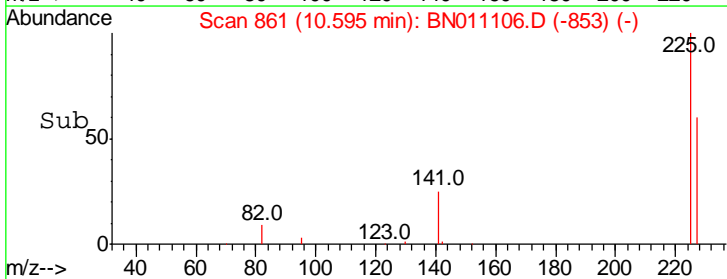
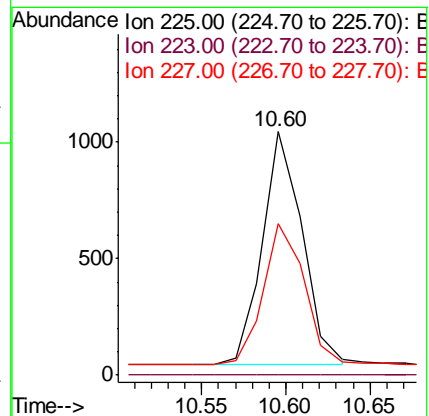
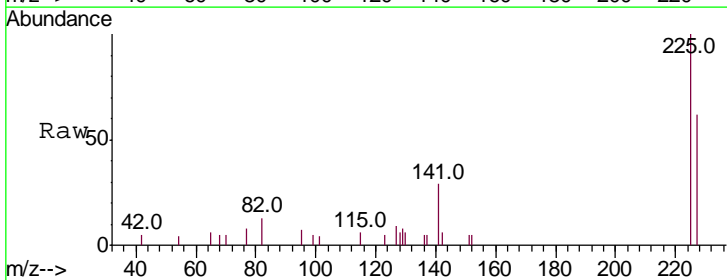
Instrument :
 BNA_N
 ClientSampleId :
 SSTDCCC0.4EC

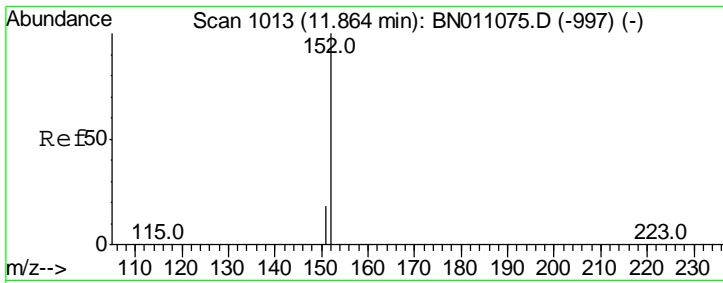
Tgt Ion	Resp	Lower	Upper
128	100		
129	12.3	9.8	14.8
127	14.1	11.3	16.9



#10
 Hexachlorobutadiene
 Concen: 0.423 ng
 RT: 10.60 min Scan# 861
 Delta R.T. -0.00 min
 Lab File: BN011106.D
 Acq: 06 Jul 2020 15:53

Tgt Ion	Resp	Lower	Upper
225	100		
223	0.0	0.0	0.0
227	62.0	51.4	77.2

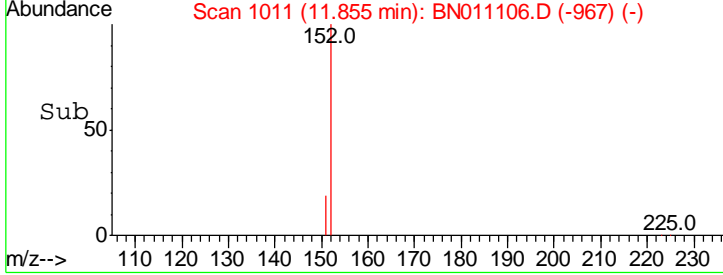
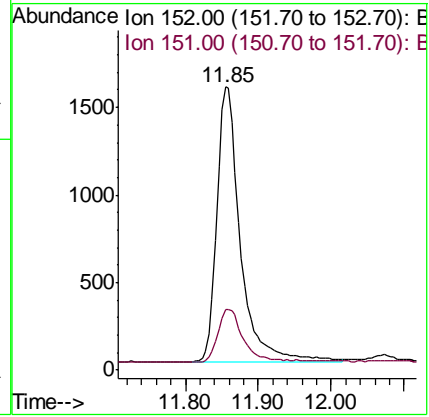
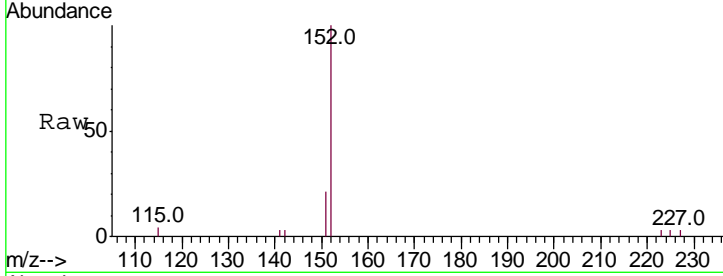




#11
 2-Methylnaphthalene-d10
 Concen: 0.399 ng
 RT: 11.85 min Scan# 1011
 Delta R.T. -0.00 min
 Lab File: BN011106.D
 Acq: 06 Jul 2020 15:53

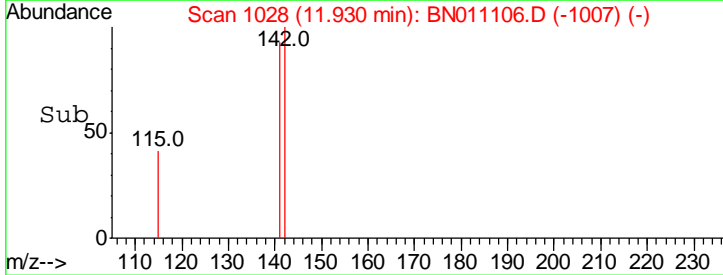
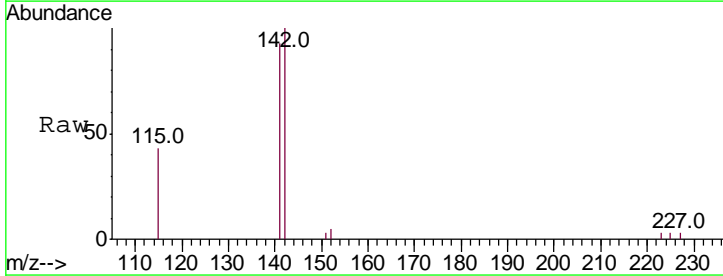
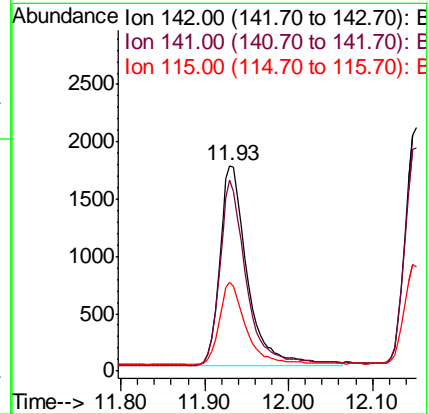
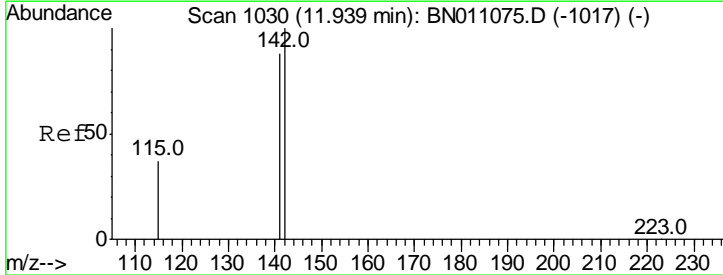
Instrument :
 BNA_N
ClientSampleId :
 SSTDCCC0.4EC

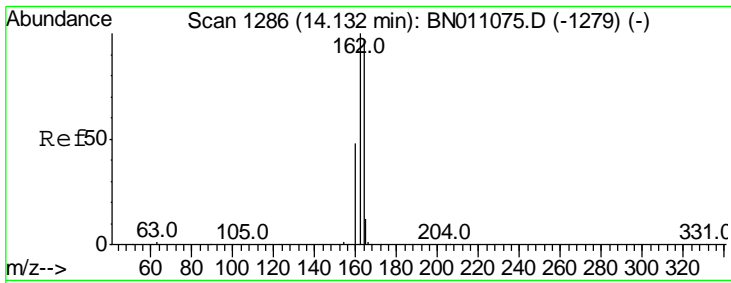
Tgt Ion	Resp	Lower	Upper
152	100		
151	20.8	16.6	24.8



#12
 2-Methylnaphthalene
 Concen: 0.388 ng
 RT: 11.93 min Scan# 1028
 Delta R.T. -0.00 min
 Lab File: BN011106.D
 Acq: 06 Jul 2020 15:53

Tgt Ion	Resp	Lower	Upper
142	100		
141	93.1	70.3	105.5
115	43.4	31.2	46.8

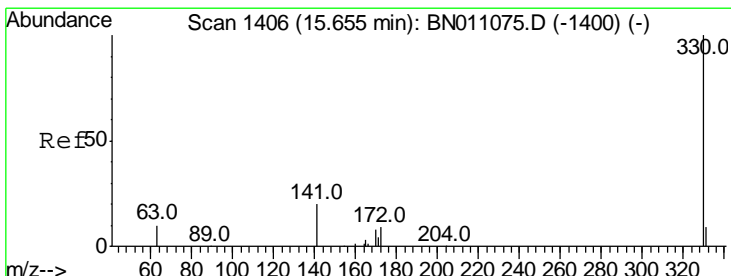
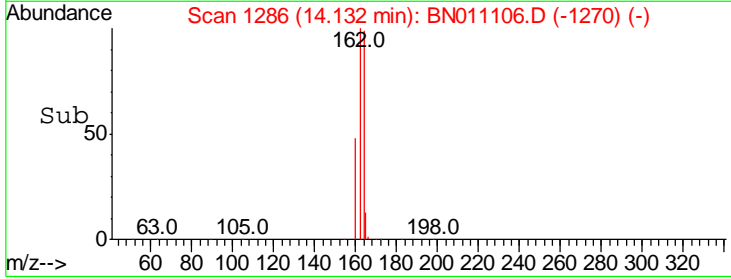
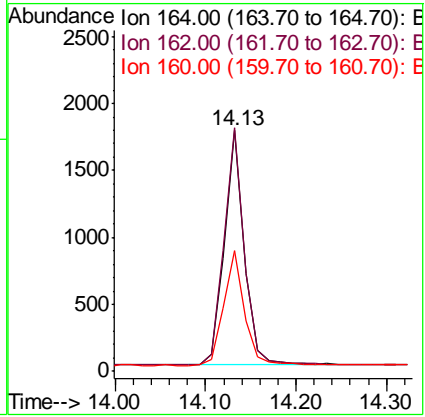
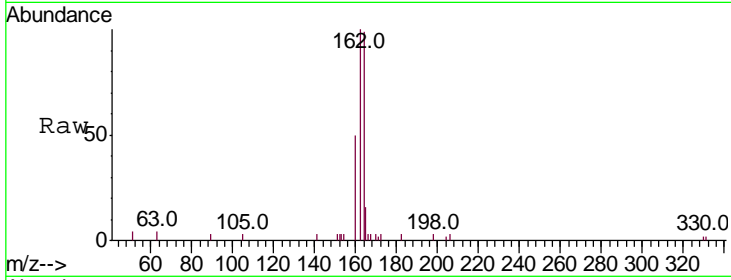




#13
 Acenaphthene-d10
 Concen: 0.400 ng
 RT: 14.13 min Scan# 1286
 Delta R.T. -0.00 min
 Lab File: BN011106.D
 Acq: 06 Jul 2020 15:53

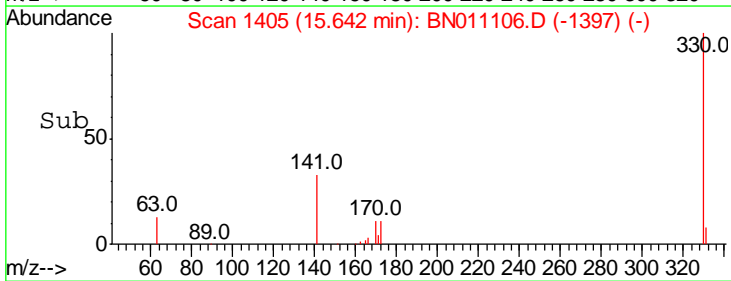
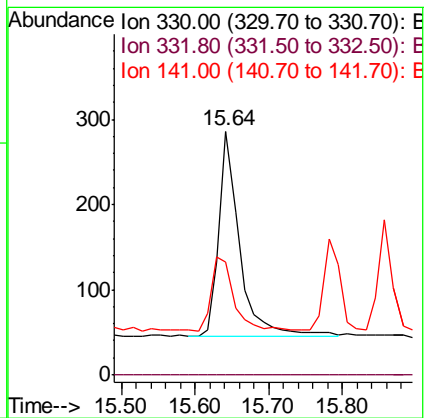
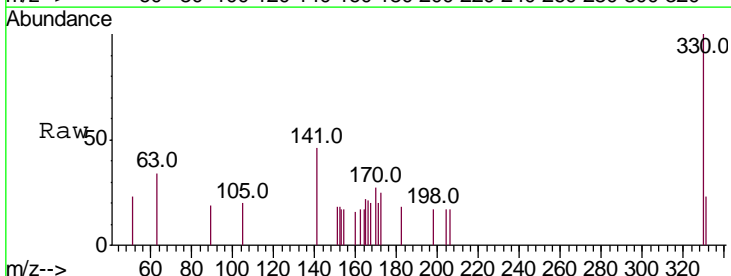
Instrument :
 BNA_N
 ClientSampleId :
 SSTDCCC0.4EC

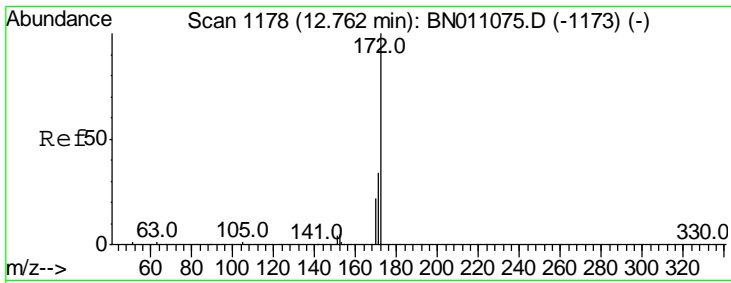
Tgt Ion	Resp	Lower	Upper
164	100		
162	101.3	82.3	123.5
160	50.1	40.6	61.0



#14
 2,4,6-Tribromophenol
 Concen: 0.418 ng
 RT: 15.64 min Scan# 1405
 Delta R.T. -0.00 min
 Lab File: BN011106.D
 Acq: 06 Jul 2020 15:53

Tgt Ion	Resp	Lower	Upper
330	100		
332	0.0	0.0	0.0
141	38.3	32.6	49.0

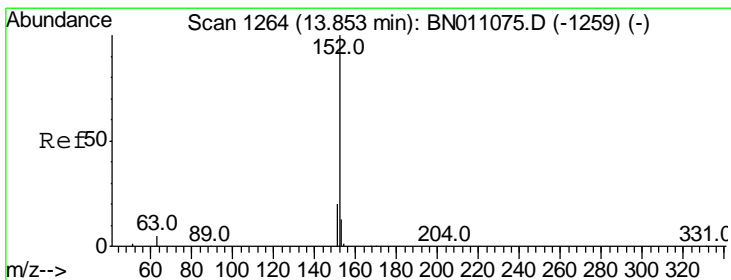
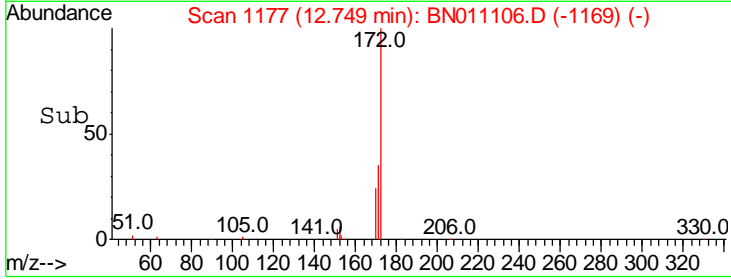
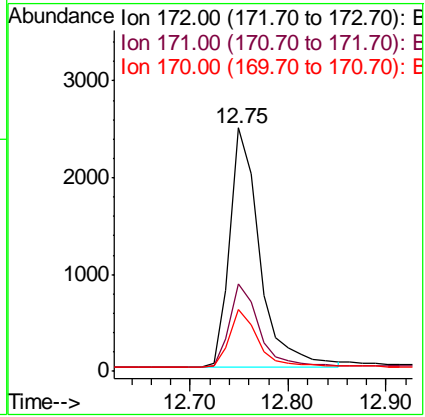
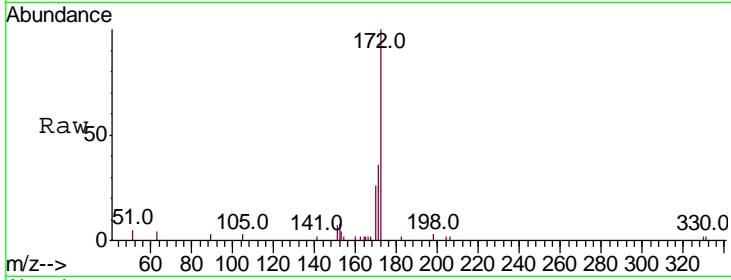




#15
 2-Fluorobiphenyl
 Concen: 0.412 ng
 RT: 12.75 min Scan# 1177
 Delta R.T. -0.00 min
 Lab File: BN011106.D
 Acq: 06 Jul 2020 15:53

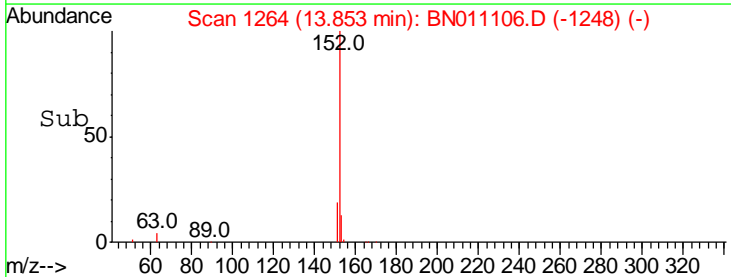
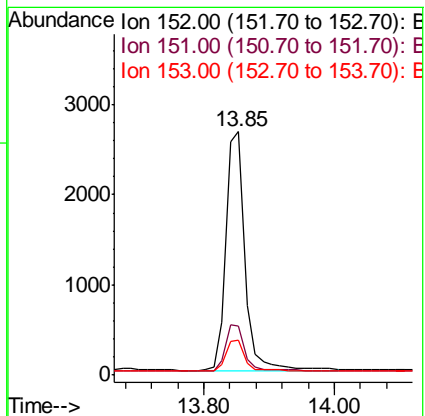
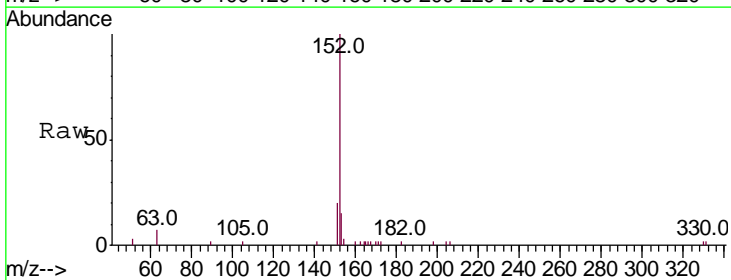
Instrument :
 BNA_N
 ClientSampleId :
 SSTDCCC0.4EC

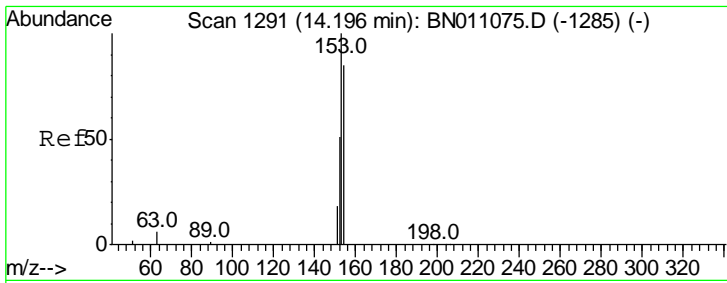
Tgt Ion	Resp	Lower	Upper
172	100		
171	36.0	27.9	41.9
170	25.6	18.7	28.1



#16
 Acenaphthylene
 Concen: 0.395 ng
 RT: 13.85 min Scan# 1264
 Delta R.T. -0.00 min
 Lab File: BN011106.D
 Acq: 06 Jul 2020 15:53

Tgt Ion	Resp	Lower	Upper
152	100		
151	19.6	15.8	23.8
153	13.0	10.8	16.2

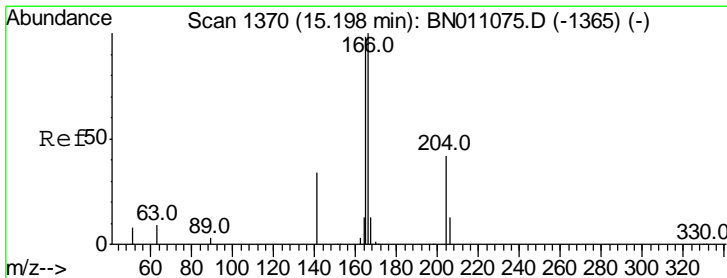
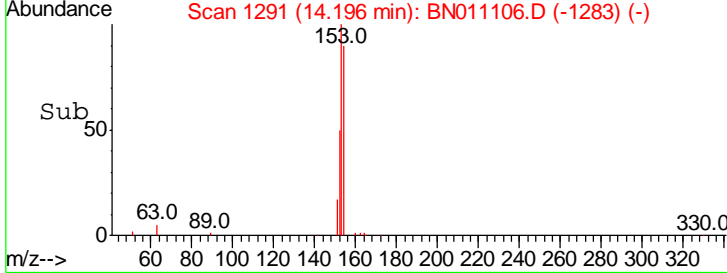
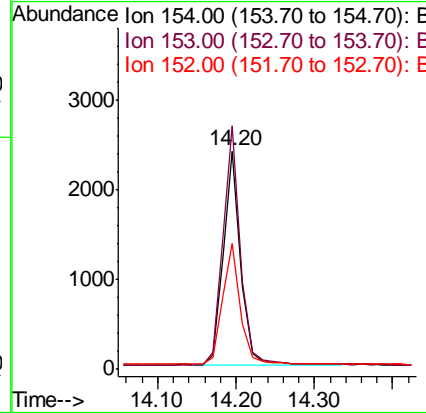
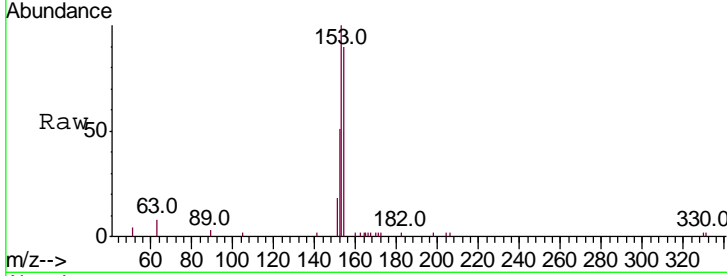




#17
 Acenaphthene
 Concen: 0.405 ng
 RT: 14.20 min Scan# 1291
 Delta R.T. -0.00 min
 Lab File: BN011106.D
 Acq: 06 Jul 2020 15:53

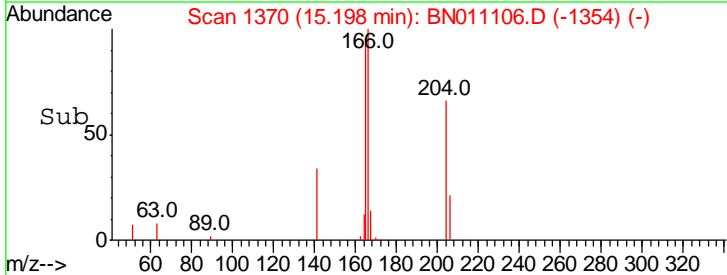
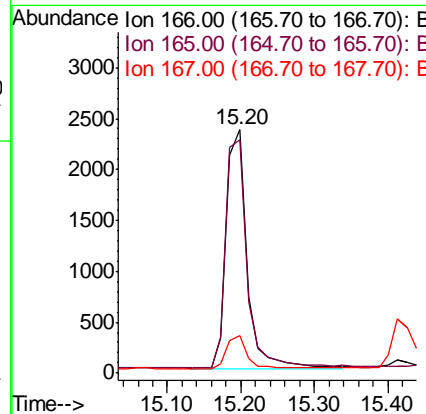
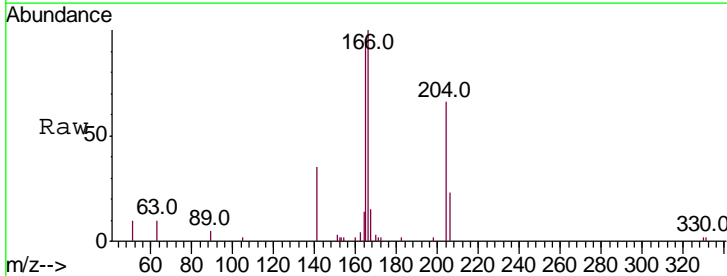
Instrument :
 BNA_N
 ClientSampled :
 SSTDCC0.4EC

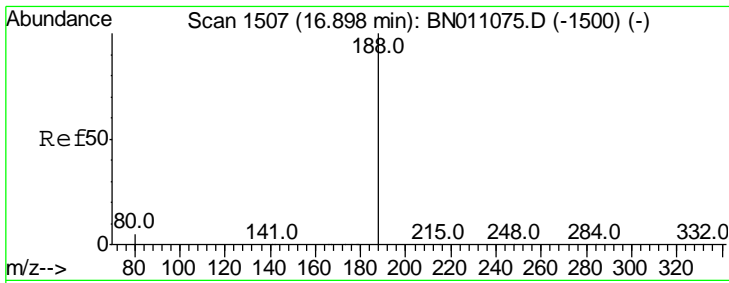
Tgt Ion	Resp	Lower	Upper
154	100		
153	113.6	91.7	137.5
152	58.4	46.8	70.2



#18
 Fluorene
 Concen: 0.403 ng
 RT: 15.20 min Scan# 1370
 Delta R.T. -0.00 min
 Lab File: BN011106.D
 Acq: 06 Jul 2020 15:53

Tgt Ion	Resp	Lower	Upper
166	100		
165	98.6	78.9	118.3
167	13.4	10.9	16.3

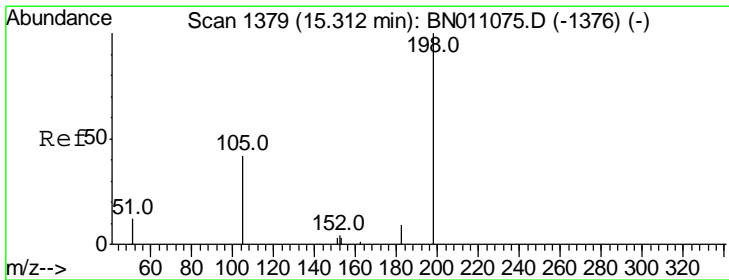
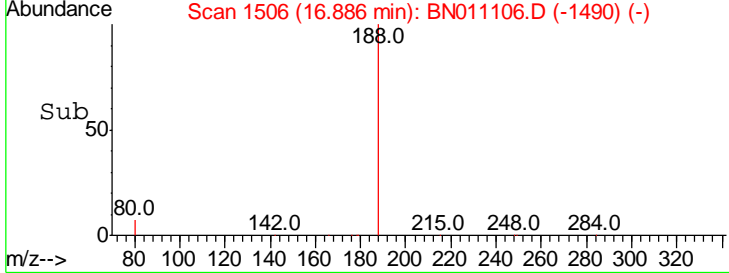
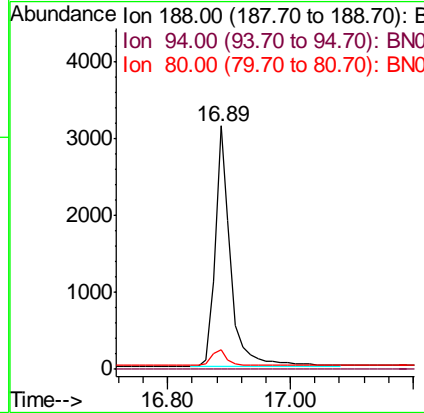
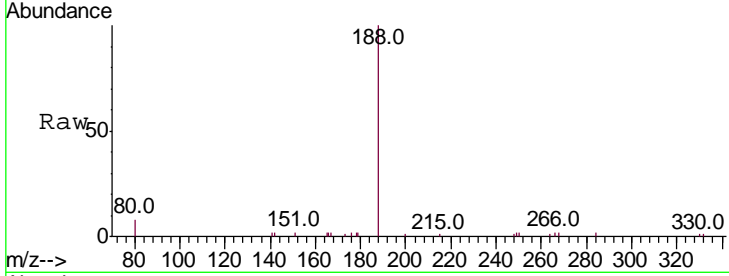




#19
 Phenanthrene-d10
 Concen: 0.400 ng
 RT: 16.89 min Scan# 1506
 Delta R.T. -0.00 min
 Lab File: BN011106.D
 Acq: 06 Jul 2020 15:53

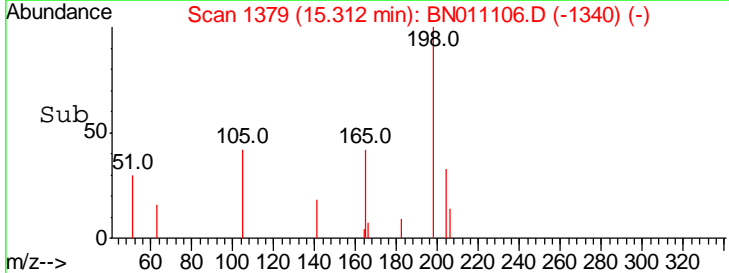
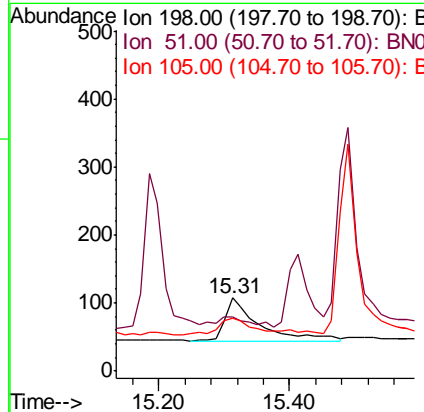
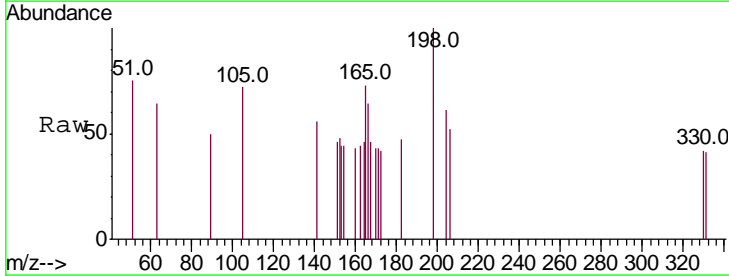
Instrument :
 BNA_N
 ClientSampleId :
 SSTDCCC0.4EC

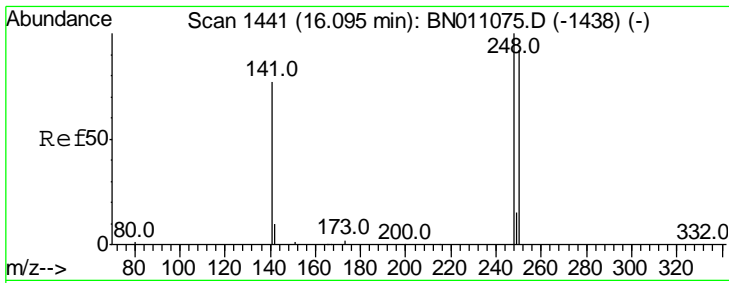
Tgt Ion	Ratio	Lower	Upper
188	100		
94	0.0	0.0	0.0
80	8.0	5.3	7.9#



#20
 4,6-Dinitro-2-methylphenol
 Concen: 0.395 ng
 RT: 15.31 min Scan# 1379
 Delta R.T. -0.00 min
 Lab File: BN011106.D
 Acq: 06 Jul 2020 15:53

Tgt Ion	Ratio	Lower	Upper
198	100		
51	74.8	58.2	87.4
105	72.0	59.0	88.4

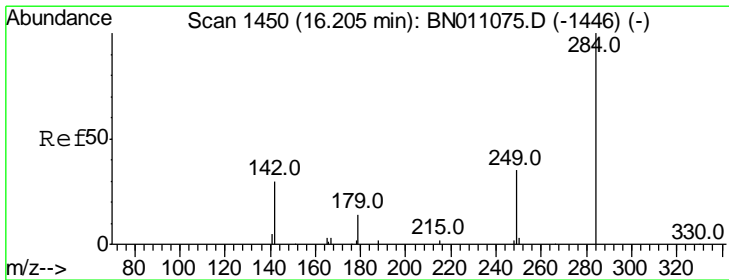
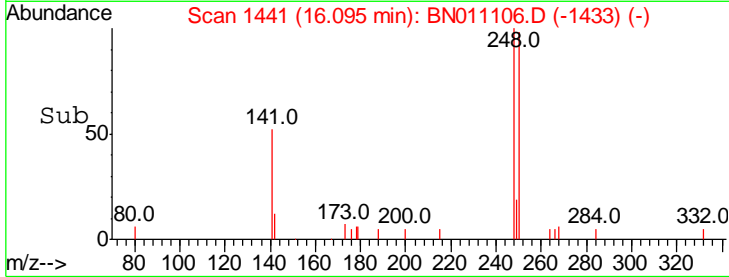
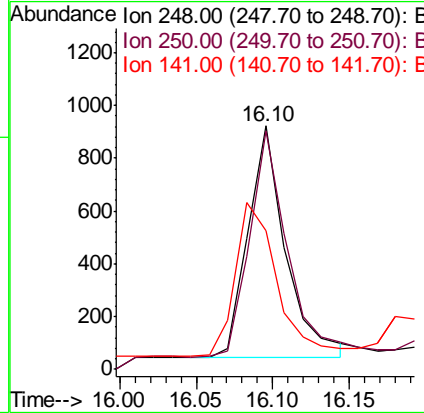
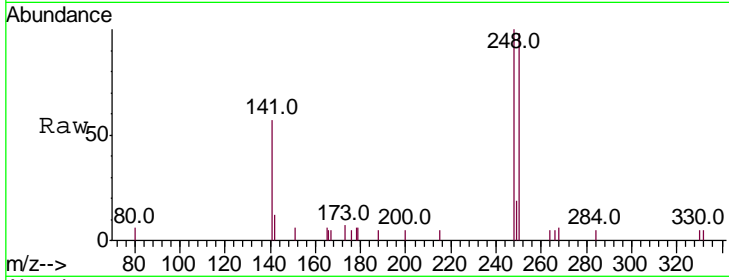




#21
 4-Bromophenyl-phenylether
 Concen: 0.412 ng
 RT: 16.10 min Scan# 1441
 Delta R.T. -0.00 min
 Lab File: BN011106.D
 Acq: 06 Jul 2020 15:53

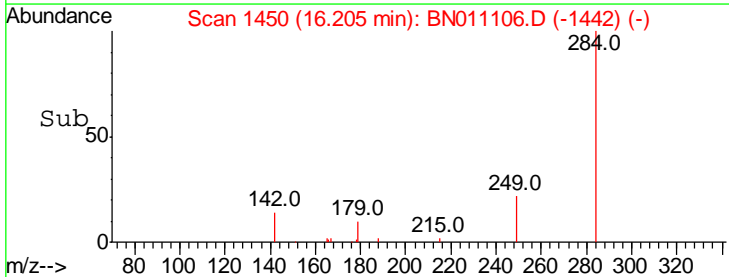
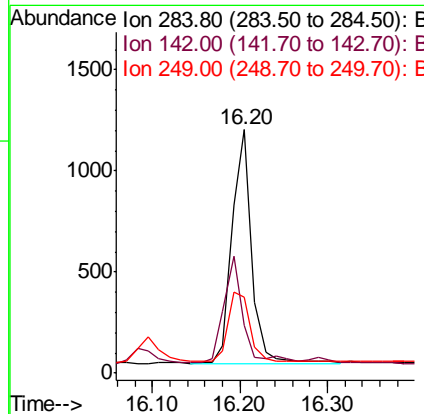
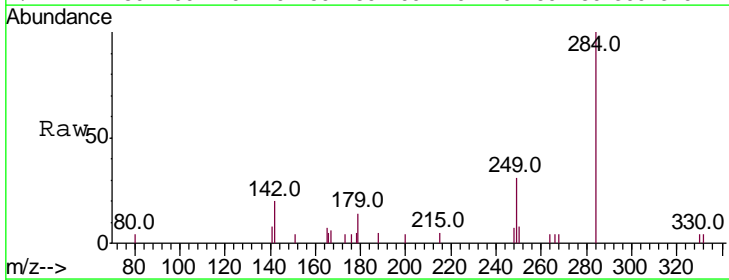
Instrument :
 BNA_N
 ClientSampleId :
 SSTDCCC0.4EC

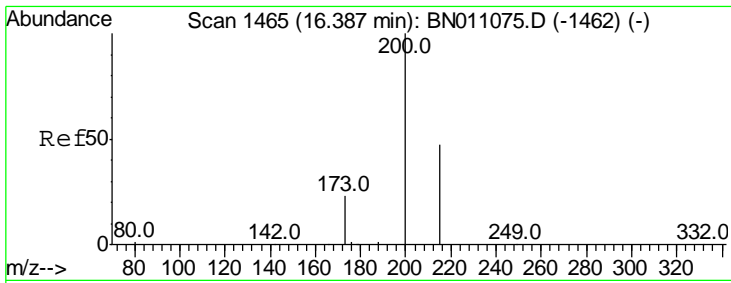
Tgt Ion	Resp	Lower	Upper
248	100		
250	98.2	73.8	110.8
141	57.1	63.1	94.7#



#22
 Hexachlorobenzene
 Concen: 0.419 ng
 RT: 16.20 min Scan# 1450
 Delta R.T. -0.00 min
 Lab File: BN011106.D
 Acq: 06 Jul 2020 15:53

Tgt Ion	Resp	Lower	Upper
284	100		
142	42.1	33.3	49.9
249	33.0	27.4	41.2

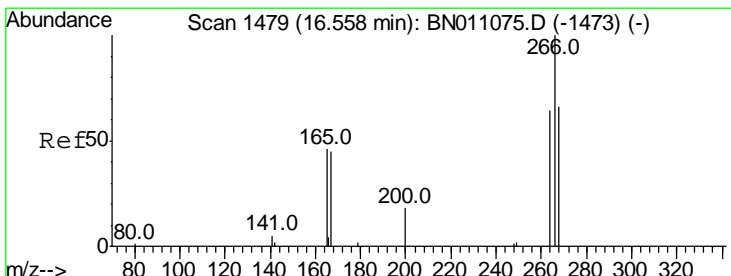
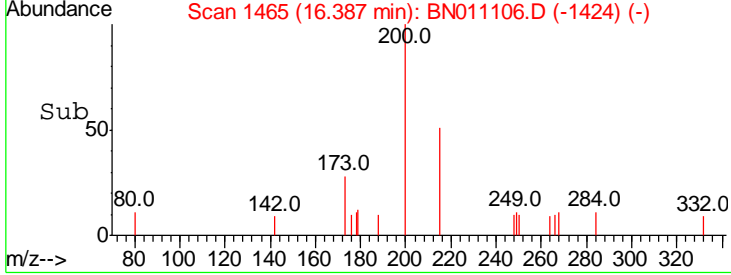
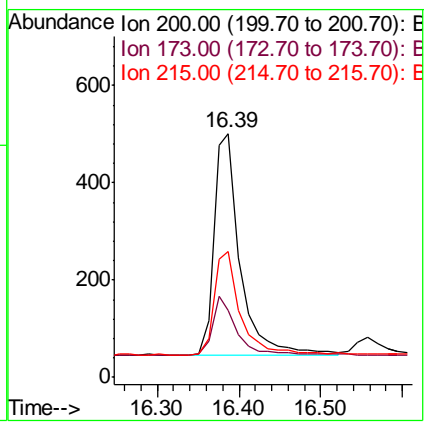
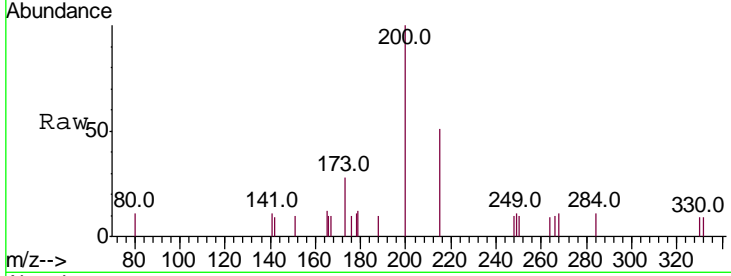




#23
 Atrazine
 Concen: 0.398 ng
 RT: 16.39 min Scan# 1465
 Delta R.T. -0.00 min
 Lab File: BN011106.D
 Acq: 06 Jul 2020 15:53

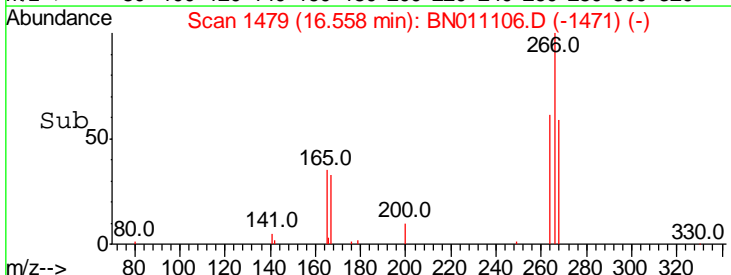
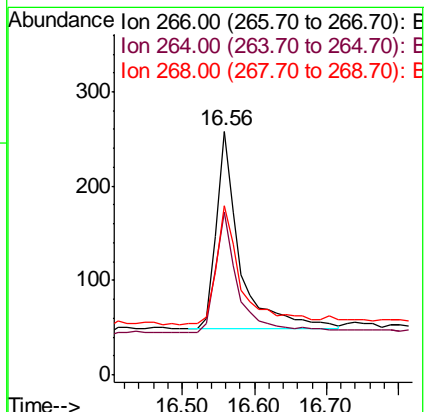
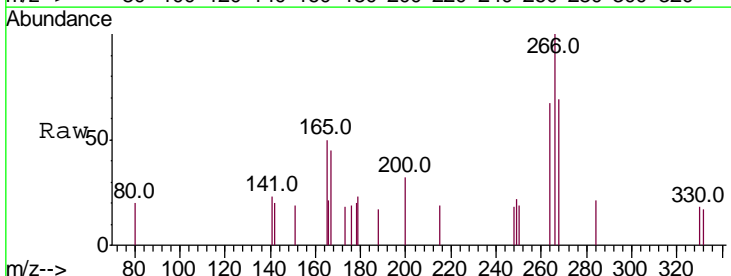
Instrument :
 BNA_N
 ClientSampleId :
 SSTDCCC0.4EC

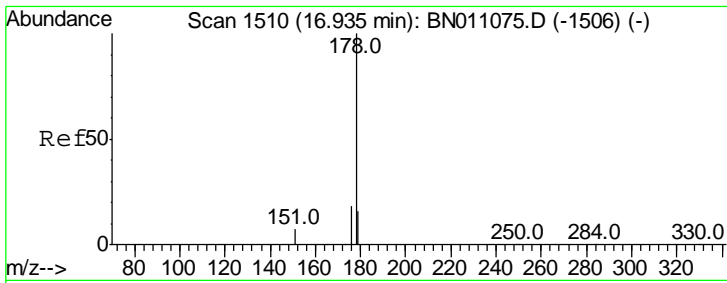
Tgt Ion	Ratio	Lower	Upper
200	100		
173	27.5	22.8	34.2
215	51.5	40.7	61.1



#24
 Pentachlorophenol
 Concen: 0.410 ng
 RT: 16.56 min Scan# 1479
 Delta R.T. -0.00 min
 Lab File: BN011106.D
 Acq: 06 Jul 2020 15:53

Tgt Ion	Ratio	Lower	Upper
266	100		
264	59.4	47.4	71.0
268	65.3	55.0	82.4

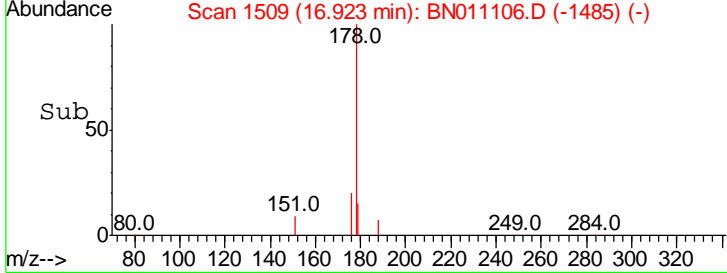
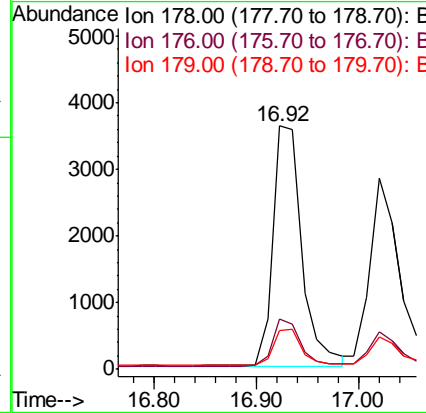
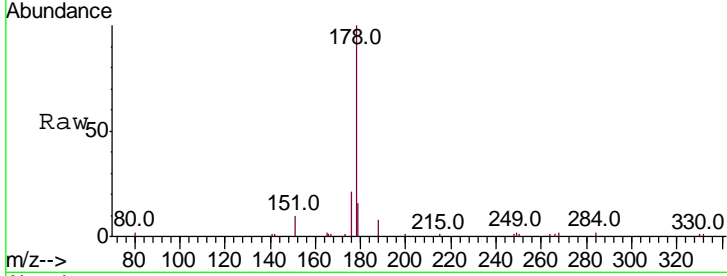




#25
 Phenanthrene
 Concen: 0.400 ng
 RT: 16.92 min Scan# 1509
 Delta R.T. -0.01 min
 Lab File: BN011106.D
 Acq: 06 Jul 2020 15:53

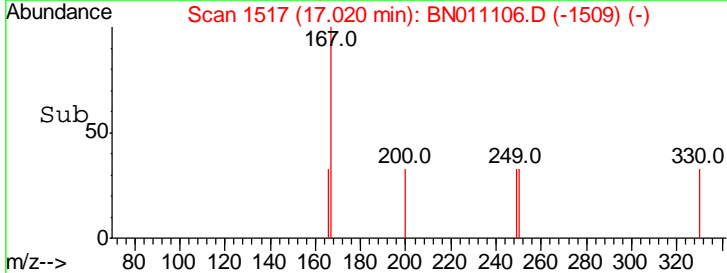
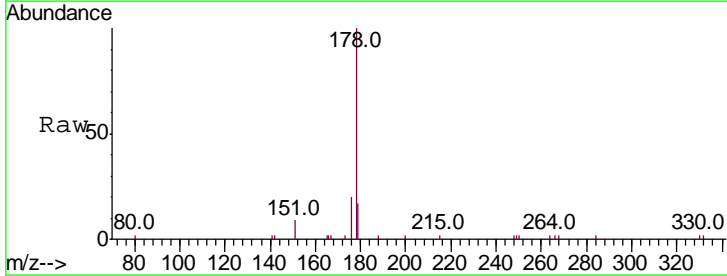
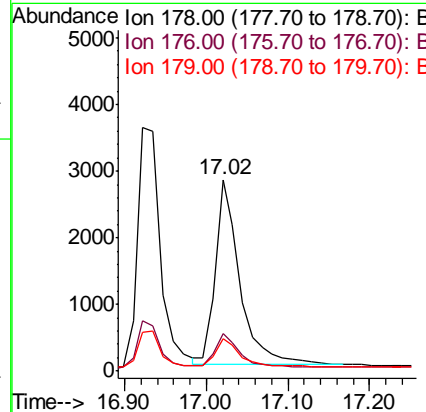
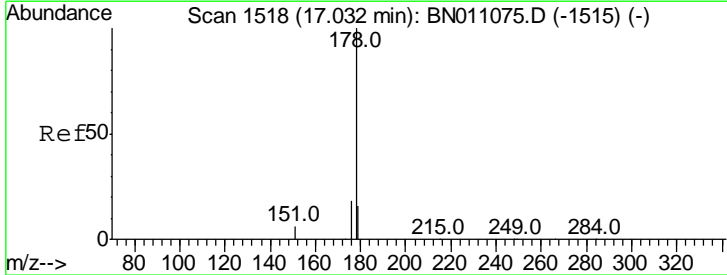
Instrument : BNA_N
 ClientSampled : SSTDCCC0.4EC

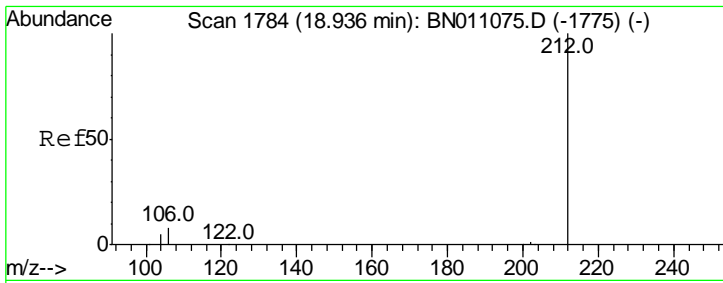
Tgt Ion	Resp	Lower	Upper
178	100		
176	19.2	15.0	22.6
179	15.2	12.5	18.7



#26
 Anthracene
 Concen: 0.394 ng
 RT: 17.02 min Scan# 1517
 Delta R.T. -0.00 min
 Lab File: BN011106.D
 Acq: 06 Jul 2020 15:53

Tgt Ion	Resp	Lower	Upper
178	100		
176	18.0	14.2	21.4
179	15.1	12.2	18.2

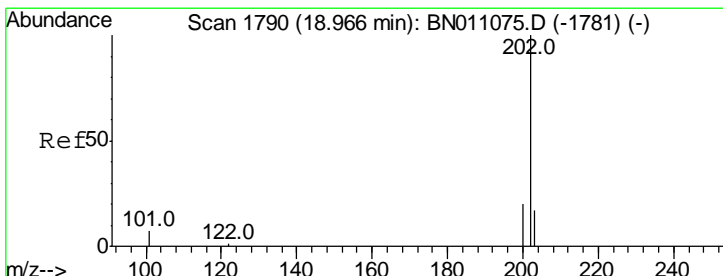
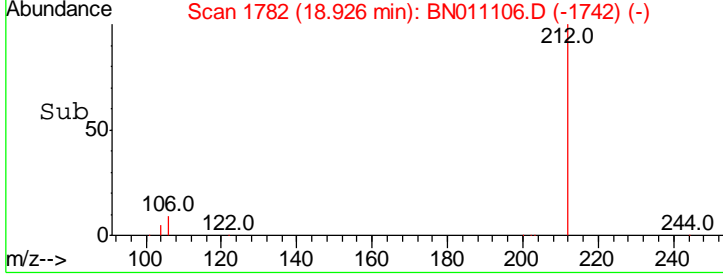
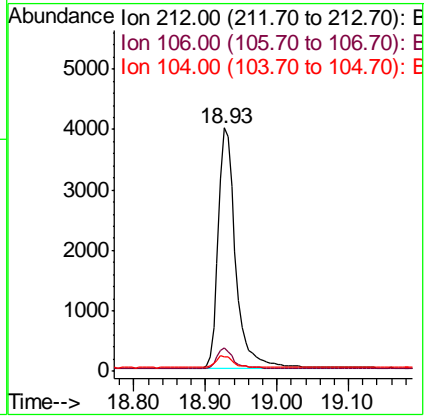
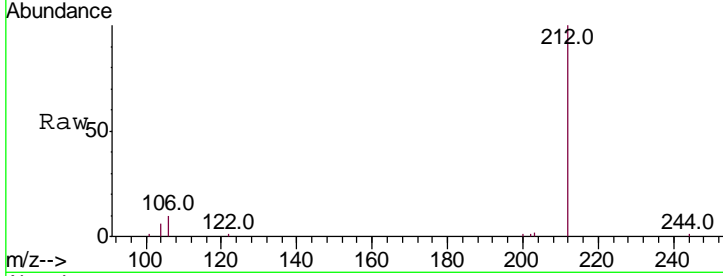




#27
 Fluoranthene-d10
 Concen: 0.409 ng
 RT: 18.93 min Scan# 1782
 Delta R.T. -0.00 min
 Lab File: BN011106.D
 Acq: 06 Jul 2020 15:53

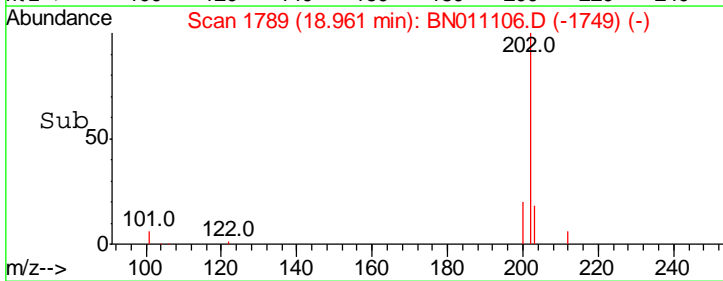
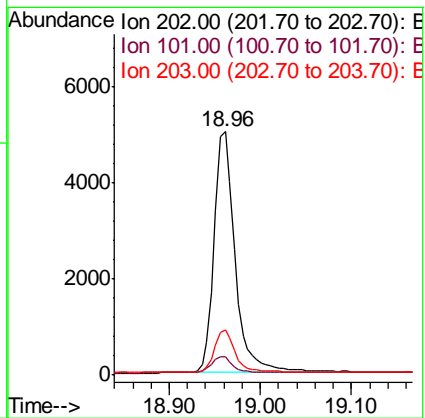
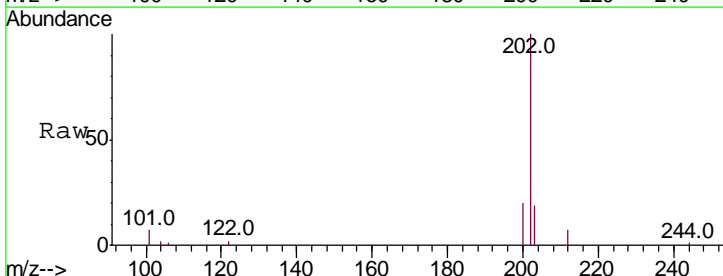
Instrument :
 BNA_N
 ClientSampleId :
 SSTDCCC0.4EC

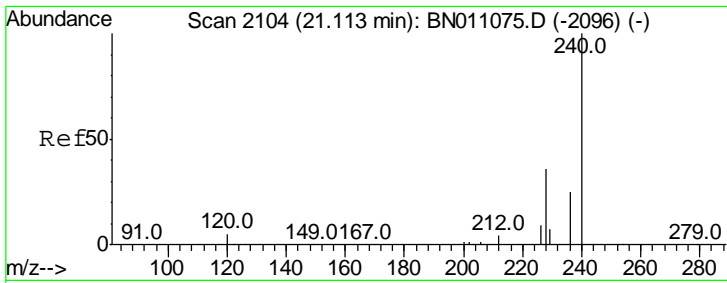
Tgt Ion	Resp	Lower	Upper
212	100		
106	8.2	7.1	10.7
104	4.7	4.2	6.4



#28
 Fluoranthene
 Concen: 0.402 ng
 RT: 18.96 min Scan# 1789
 Delta R.T. -0.00 min
 Lab File: BN011106.D
 Acq: 06 Jul 2020 15:53

Tgt Ion	Resp	Lower	Upper
202	100		
101	6.9	6.3	9.5
203	17.2	13.5	20.3

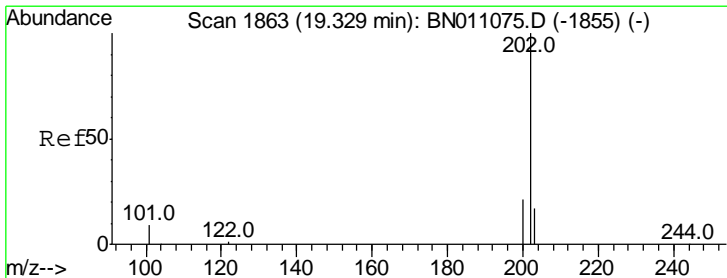
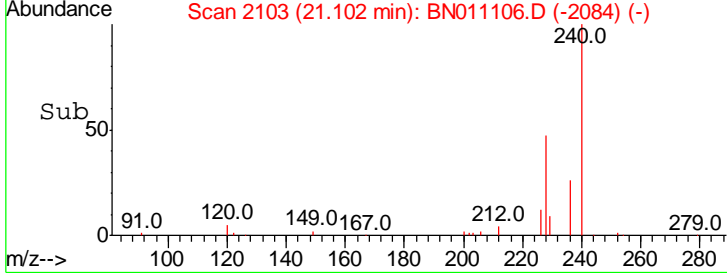
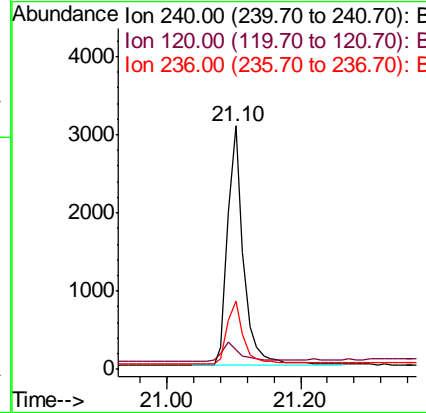
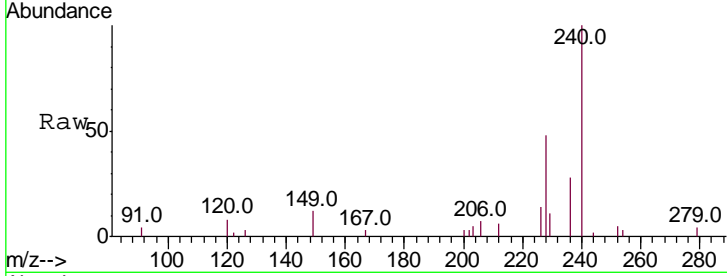




#29
 Chrysene-d12
 Concen: 0.400 ng
 RT: 21.10 min Scan# 2103
 Delta R.T. 0.00 min
 Lab File: BN011106.D
 Acq: 06 Jul 2020 15:53

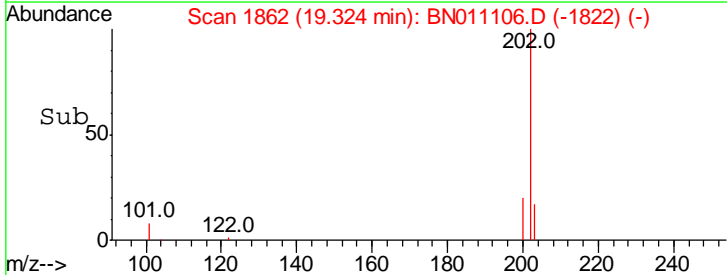
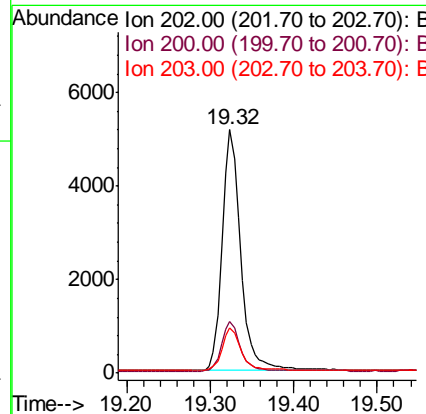
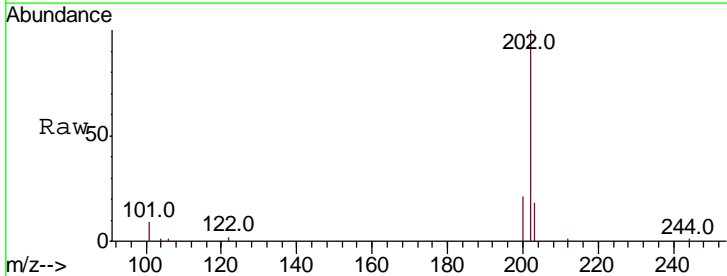
Instrument :
 BNA_N
 ClientSampleId :
 SSTDCCC0.4EC

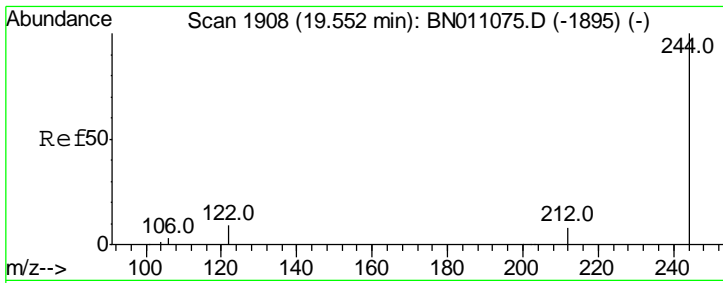
Tgt Ion	Resp	Lower	Upper
240	100		
120	8.3	6.5	9.7
236	28.0	21.9	32.9



#30
 Pyrene
 Concen: 0.420 ng
 RT: 19.32 min Scan# 1862
 Delta R.T. -0.00 min
 Lab File: BN011106.D
 Acq: 06 Jul 2020 15:53

Tgt Ion	Resp	Lower	Upper
202	100		
200	20.4	16.6	25.0
203	17.7	14.2	21.4

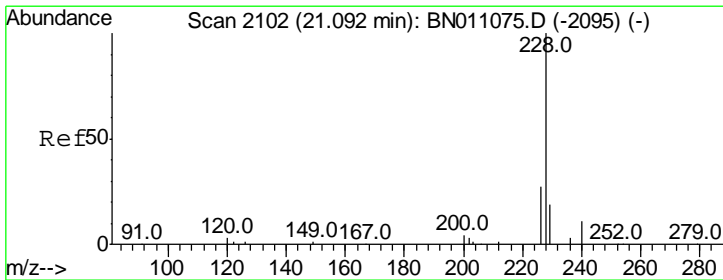
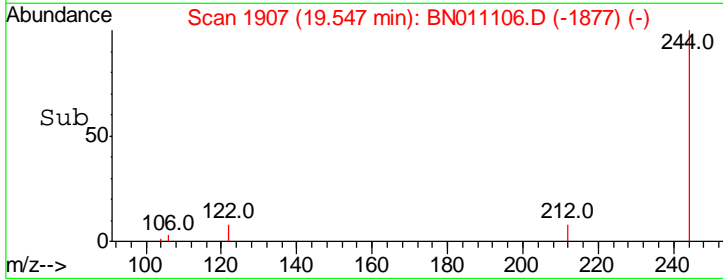
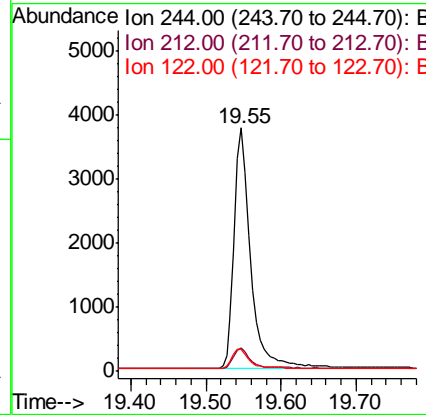
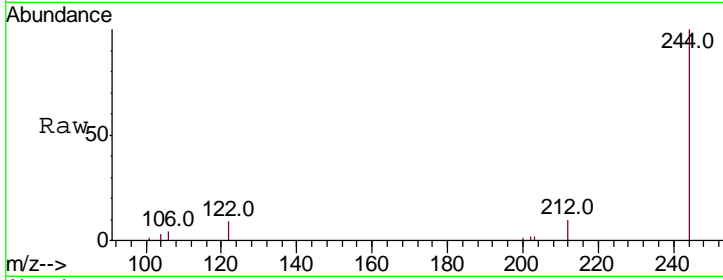




#31
 Terphenyl-d14
 Concen: 0.431 ng
 RT: 19.55 min Scan# 1907
 Delta R.T. -0.00 min
 Lab File: BN011106.D
 Acq: 06 Jul 2020 15:53

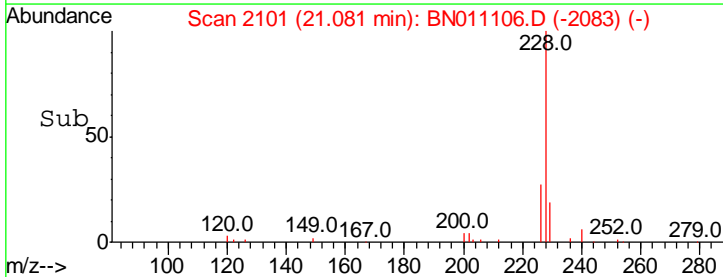
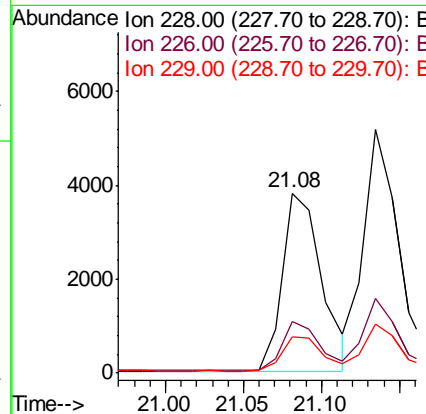
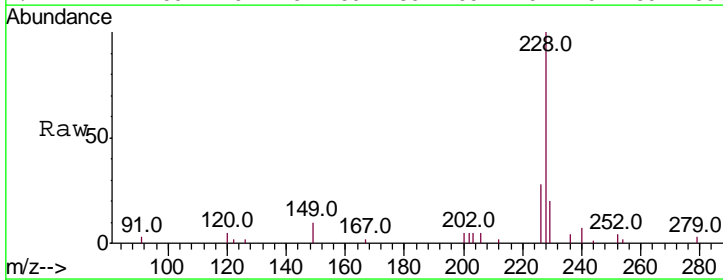
Instrument :
 BNA_N
 ClientSampleId :
 SSTDCCC0.4EC

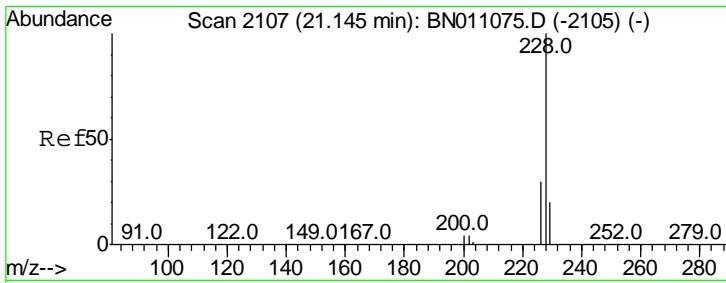
Tgt Ion	Ratio	Lower	Upper
244	100		
212	9.7	7.5	11.3
122	9.1	8.2	12.4



#32
 Benzo(a)anthracene
 Concen: 0.388 ng
 RT: 21.08 min Scan# 2101
 Delta R.T. -0.01 min
 Lab File: BN011106.D
 Acq: 06 Jul 2020 15:53

Tgt Ion	Ratio	Lower	Upper
228	100		
226	28.5	22.0	33.0
229	20.2	16.1	24.1

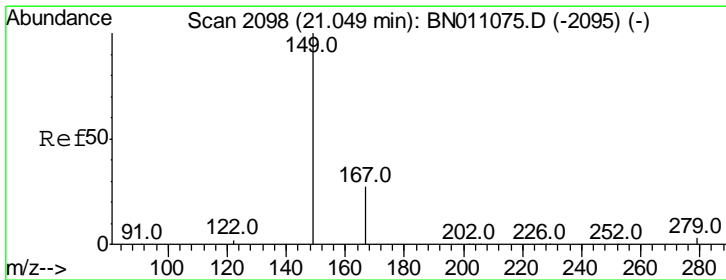
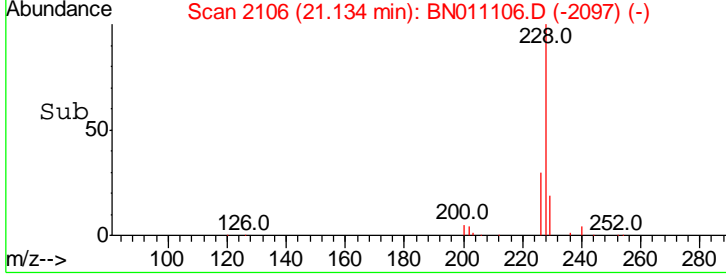
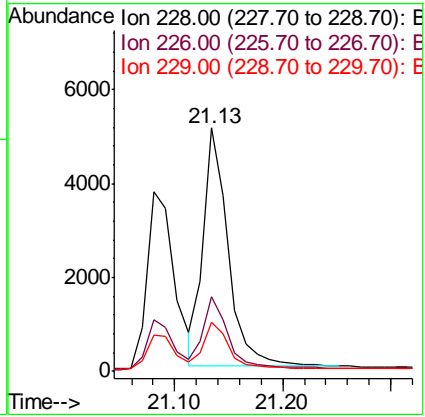
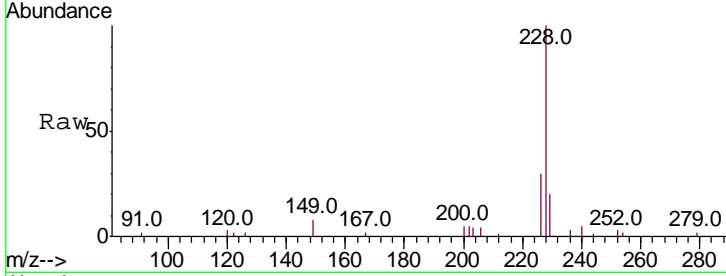




#33
 Chrysene
 Concen: 0.415 ng
 RT: 21.13 min Scan# 2106
 Delta R.T. -0.01 min
 Lab File: BN011106.D
 Acq: 06 Jul 2020 15:53

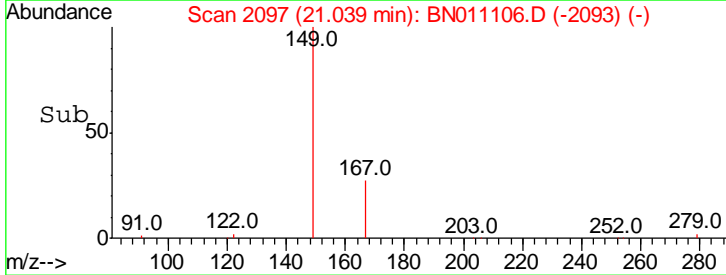
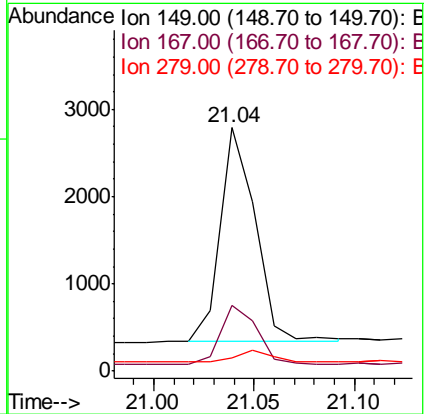
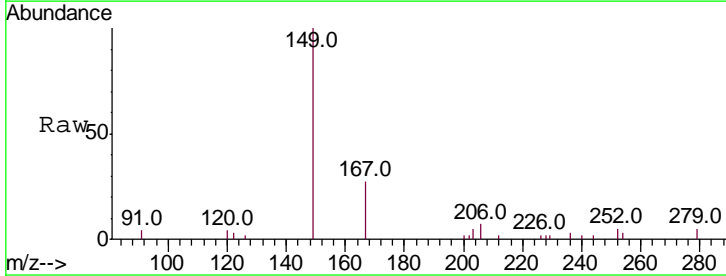
Instrument :
 BNA_N
 ClientSampled :
 SSTDCCC0.4EC

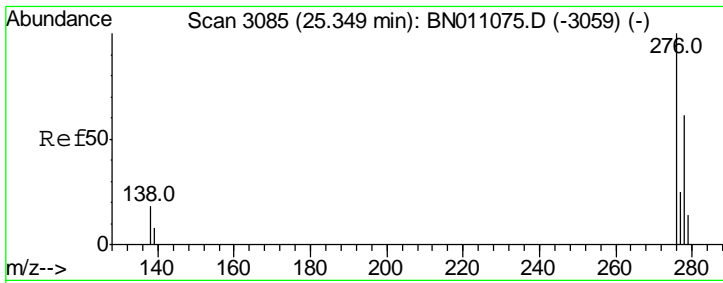
Tgt Ion	Resp	Lower	Upper
228	100		
226	30.4	24.0	36.0
229	20.1	16.4	24.6



#34
 Bis(2-ethylhexyl)phthalate
 Concen: 0.432 ng
 RT: 21.04 min Scan# 2097
 Delta R.T. -0.01 min
 Lab File: BN011106.D
 Acq: 06 Jul 2020 15:53

Tgt Ion	Resp	Lower	Upper
149	100		
167	28.7	22.2	33.4
279	5.2	4.5	6.7



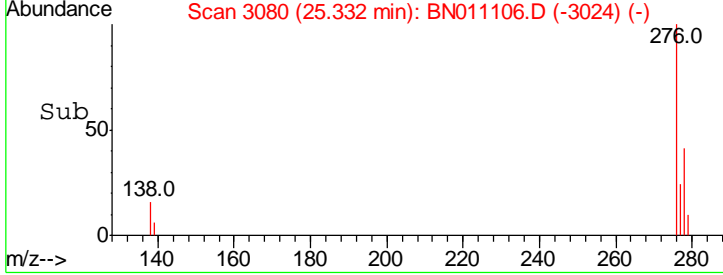
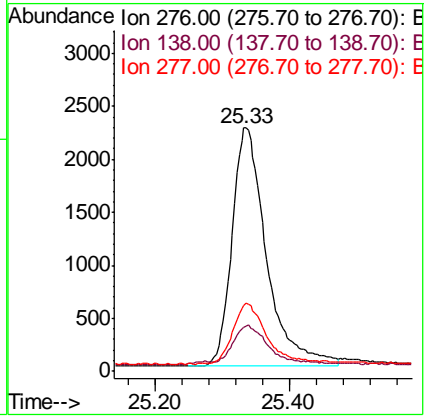
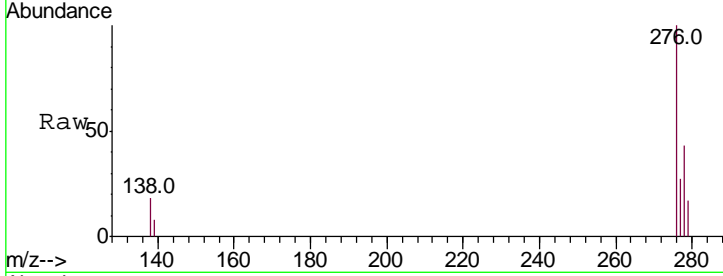


#35
 Indeno(1,2,3-cd)pyrene
 Concen: 0.395 ng
 RT: 25.33 min Scan# 3080
 Delta R.T. -0.01 min
 Lab File: BN011106.D
 Acq: 06 Jul 2020 15:53

Instrument :
 BNA_N
 ClientSampleId :
 SSTDCCC0.4EC

Tgt Ion: 276 Resp: 8064

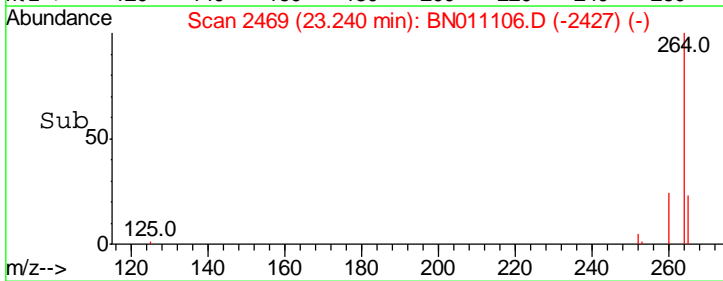
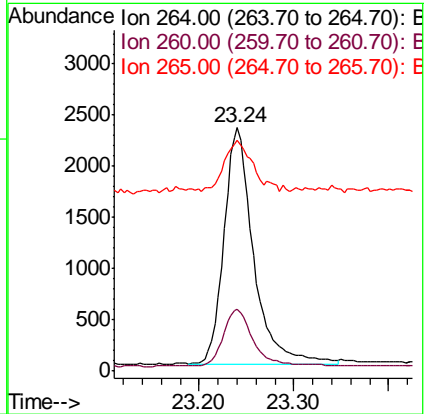
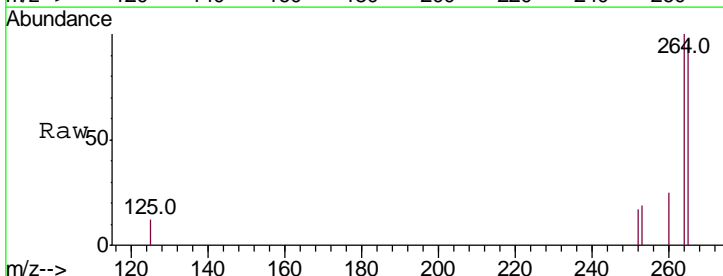
Ion	Ratio	Lower	Upper
276	100		
138	15.9	15.4	23.0
277	24.2	19.4	29.0

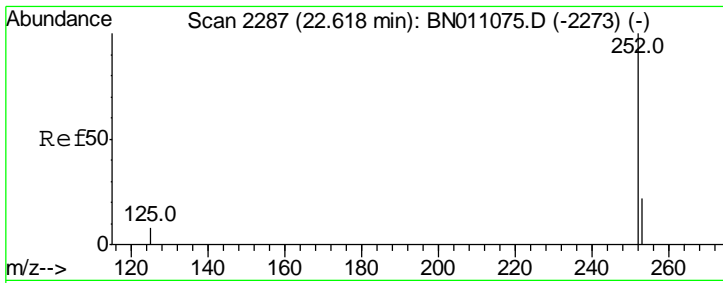


#36
 Perylene-d12
 Concen: 0.400 ng
 RT: 23.24 min Scan# 2469
 Delta R.T. -0.00 min
 Lab File: BN011106.D
 Acq: 06 Jul 2020 15:53

Tgt Ion: 264 Resp: 5026

Ion	Ratio	Lower	Upper
264	100		
260	25.4	20.4	30.6
265	94.7	83.0	124.6



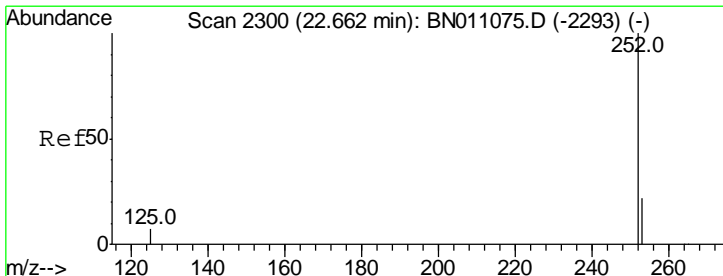
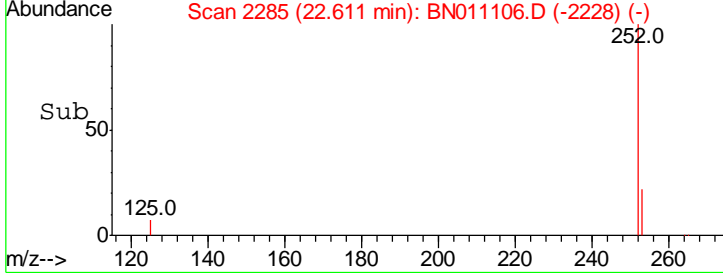
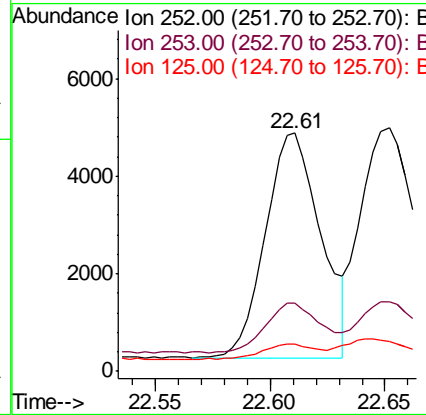
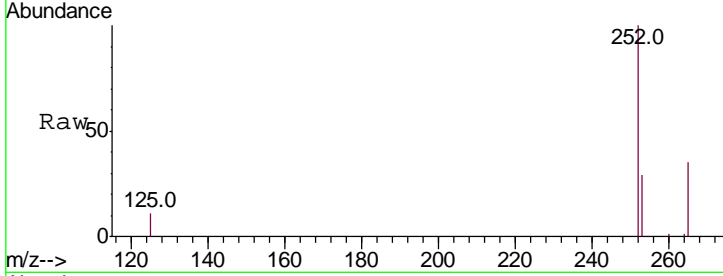


#37
 Benzo(b)fluoranthene
 Concen: 0.384 ng
 RT: 22.61 min Scan# 2285
 Delta R.T. -0.00 min
 Lab File: BN011106.D
 Acq: 06 Jul 2020 15:53

Instrument :
 BNA_N
 ClientSampleId :
 SSTDCCC0.4EC

Tgt Ion: 252 Resp: 7730

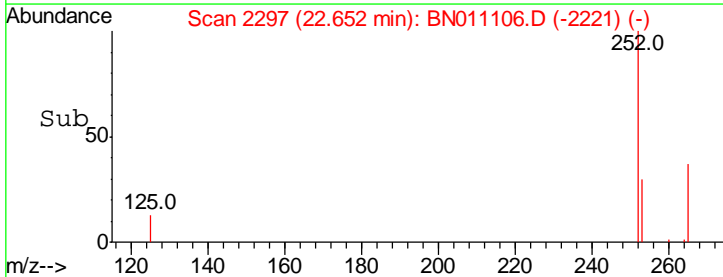
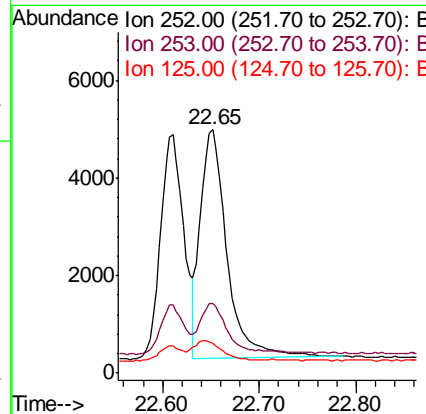
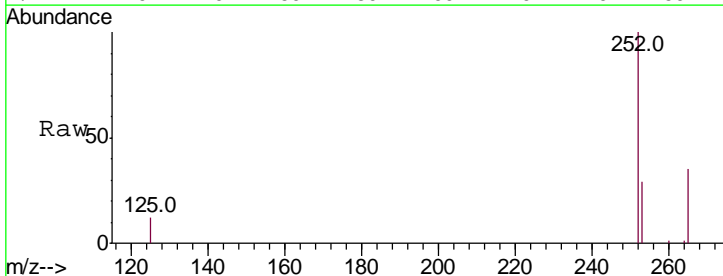
Ion	Ratio	Lower	Upper
252	100		
253	28.7	22.7	34.1
125	11.2	10.4	15.6

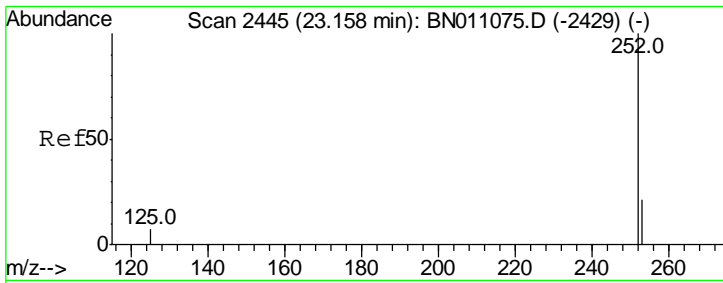


#38
 Benzo(k)fluoranthene
 Concen: 0.414 ng
 RT: 22.65 min Scan# 2297
 Delta R.T. -0.00 min
 Lab File: BN011106.D
 Acq: 06 Jul 2020 15:53

Tgt Ion: 252 Resp: 8926

Ion	Ratio	Lower	Upper
252	100		
253	28.7	22.9	34.3
125	12.4	10.6	15.8

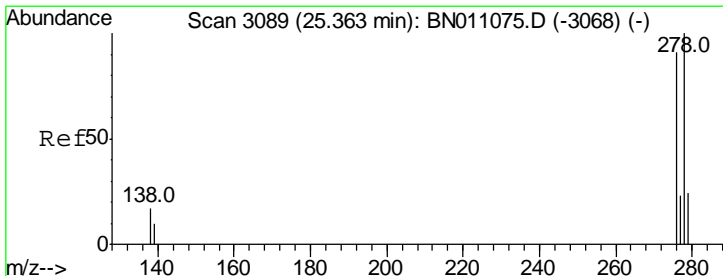
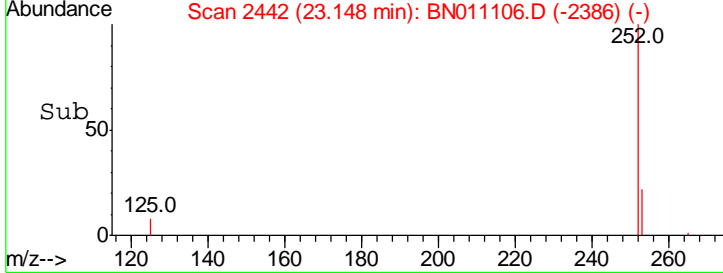
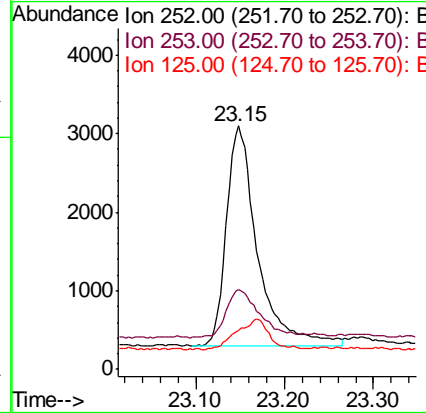
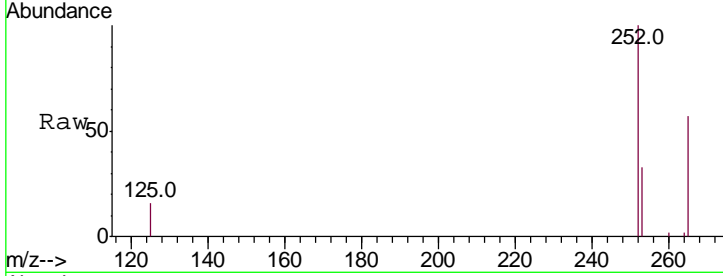




#39
 Benzo(a)pyrene
 Concen: 0.398 ng
 RT: 23.15 min Scan# 2442
 Delta R.T. -0.01 min
 Lab File: BN011106.D
 Acq: 06 Jul 2020 15:53

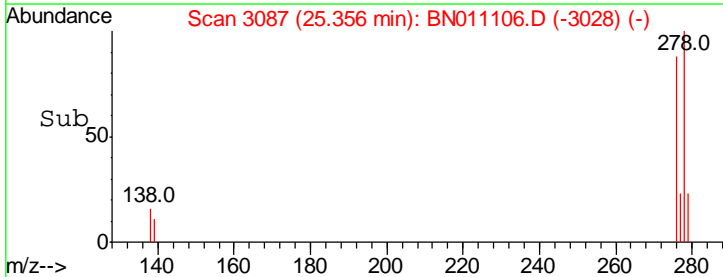
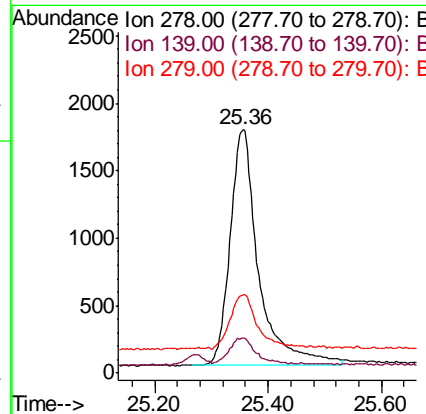
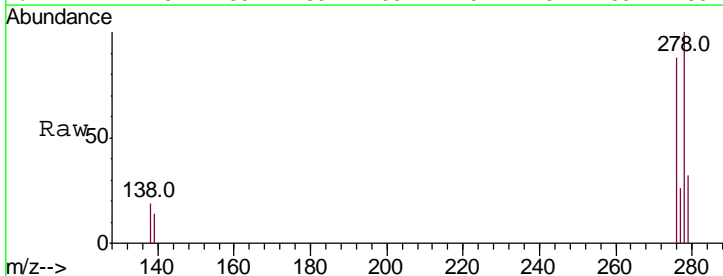
Instrument :
 BNA_N
 ClientSampleId :
 SSTDCCC0.4EC

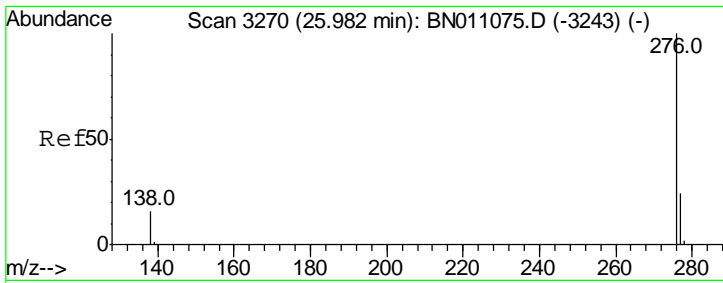
Tgt Ion	Resp	Lower	Upper
252	100		
253	32.9	25.9	38.9
125	15.7	12.5	18.7



#40
 Dibenzo(a,h)anthracene
 Concen: 0.345 ng
 RT: 25.36 min Scan# 3087
 Delta R.T. 0.00 min
 Lab File: BN011106.D
 Acq: 06 Jul 2020 15:53

Tgt Ion	Resp	Lower	Upper
278	100		
139	14.4	11.9	17.9
279	32.3	25.5	38.3





#41
 Benzo(a,h,i)perylene
 Concen: 0.376 ng
 RT: 25.96 min Scan# 3264
 Delta R.T. -0.01 min
 Lab File: BN011106.D
 Acq: 06 Jul 2020 15:53

Instrument :
 BNA_N
 ClientSampleId :
 SSTDCCC0.4EC

Tot Ion: 276 Resp: 7379

Ion	Ratio	Lower	Upper
276	100		
277	26.3	21.1	31.7
138	17.7	15.0	22.6

