

Data Path : Z:\SVOASRV\HPCHEM1\BNA N\DATA\BN070620\
 Data File : BN011103.D
 Acq On : 06 Jul 2020 12:24
 Operator : CG/JU
 Sample : L1955-11
 Misc : MDL-WTR--04
 ALS Vial : 8 Sample Multiplier: 1

Instrument :
 BNA_N
 ClientSampleId :
 MDL-WATER-04

Quant Time: Jul 06 13:23:46 2020
 Quant Method : Z:\SVOASRV\HPCHEM1\BNA N\METHODS\8270-SIM-BN063020.M
 Quant Title : ASP BNA STANDARDS FOR 5 POINT CALIBRATION
 QLast Update : Mon Jul 06 12:31:54 2020
 Response via : Initial Calibration

Internal Standards	R.T.	QIon	Response	Conc	Units	Dev(Min)
1) 1,4-Dichlorobenzene-d4	7.52	152	1815	0.40	ng	0.00
7) Naphthalene-d8	10.27	136	5683	0.40	ng	0.00
13) Acenaphthene-d10	14.14	164	2906	0.40	ng	0.01
19) Phenanthrene-d10	16.90	188	6142	0.40	ng	0.01
29) Chrysene-d12	21.11	240	5166	0.40	ng	0.01
36) Perylene-d12	23.25	264	5305	0.40	ng	0.00

System Monitoring Compounds

4) 2-Fluorophenol	5.18	112	1662	0.37	ng	0.00
5) Phenol-d6	6.73	99	1639	0.32	ng	0.00
8) Nitrobenzene-d5	8.67	82	1509	0.31	ng	0.01
11) 2-Methylnaphthalene-d10	11.87	152	3353	0.34	ng	0.01
14) 2,4,6-Tribromophenol	15.65	330	416	0.34	ng	0.01
15) 2-Fluorobiphenyl	12.77	172	4451	0.33	ng	0.03
27) Fluoranthene-d10	18.94	212	6752	0.36	ng	0.00
31) Terphenyl-d14	19.56	244	5040	0.37	ng	0.00

Target Compounds

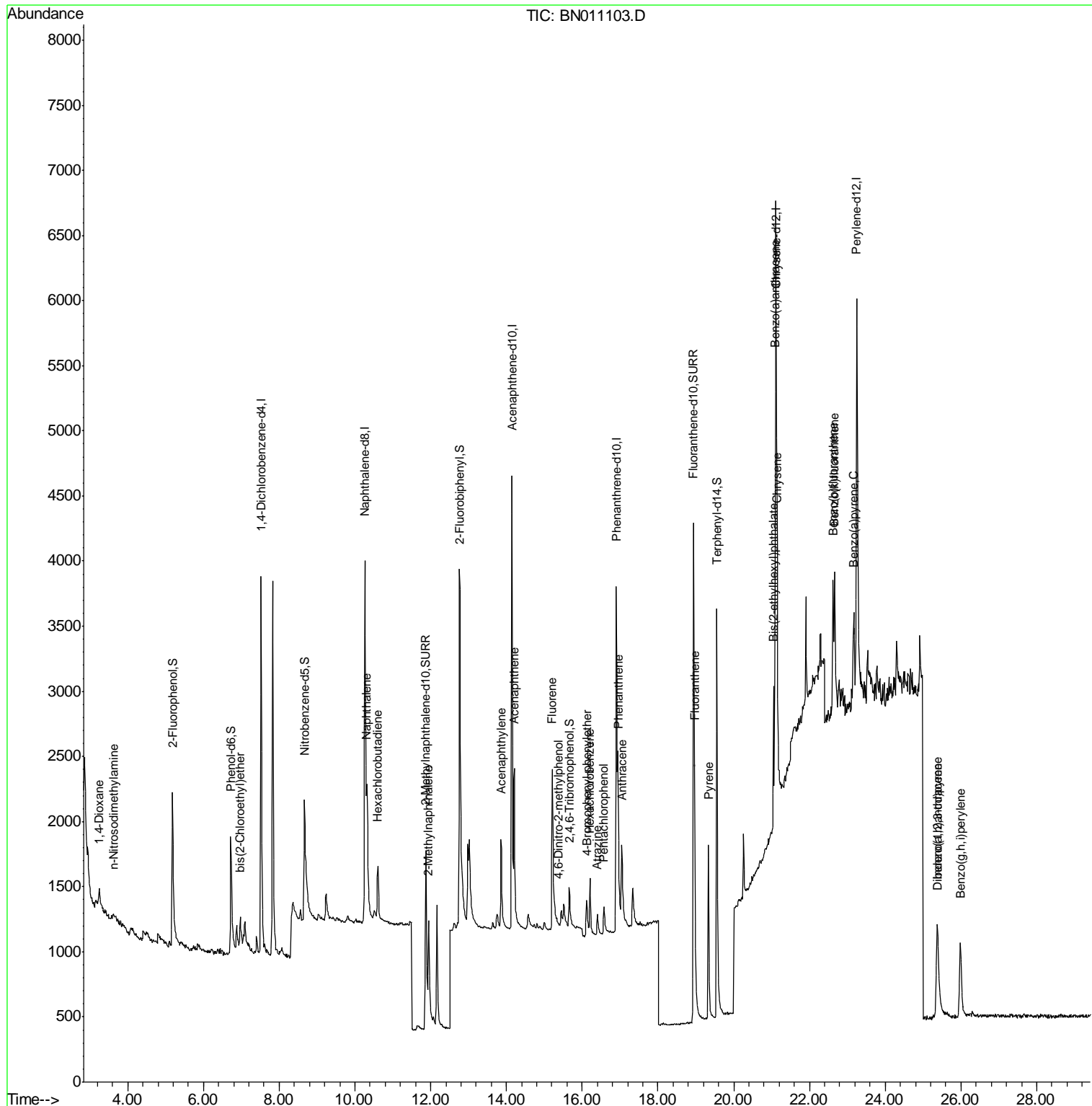
Target Compounds	R.T.	QIon	Response	Conc	Units	Qvalue
2) 1,4-Dioxane	3.24	88	230	0.090	ng	# 89
3) n-Nitrosodimethylamine	3.63	42	45m	0.035	ng	
6) bis(2-Chloroethyl)ether	6.97	93	345	0.073	ng	93
9) Naphthalene	10.32	128	1434	0.085	ng	# 87
10) Hexachlorobutadiene	10.61	225	350	0.081	ng	# 100
12) 2-Methylnaphthalene	11.95	142	931	0.082	ng	# 91
16) Acenaphthylene	13.85	152	1166	0.080	ng	99
17) Acenaphthene	14.21	154	785	0.080	ng	100
18) Fluorene	15.21	166	1030	0.083	ng	97
20) 4,6-Dinitro-2-methylphenol	15.38	198	30	0.046	ng	# 45
21) 4-Bromophenyl-phenylether	16.12	248	263	0.064	ng	97
22) Hexachlorobenzene	16.20	284	378	0.079	ng	# 90
23) Atrazine	16.40	200	227	0.079	ng	# 74
24) Pentachlorophenol	16.57	266	208	0.161	ng	94
25) Phenanthrene	16.95	178	1517	0.076	ng	99
26) Anthracene	17.04	178	1183	0.072	ng	98
28) Fluoranthene	18.97	202	1829	0.082	ng	99
30) Pyrene	19.33	202	1733	0.090	ng	100
32) Benzo(a)anthracene	21.10	228	1299	0.075	ng	# 91
33) Chrysene	21.15	228	1762	0.089	ng	93
34) Bis(2-ethylhexyl)phthalate	21.05	149	879	0.126	ng	# 98
35) Indeno(1,2,3-cd)pyrene	25.37	276	1522	0.073	ng	# 68
37) Benzo(b)fluoranthene	22.62	252	1473	0.069	ng	# 53
38) Benzo(k)fluoranthene	22.67	252	1559	0.068	ng	# 55
39) Benzo(a)pyrene	23.17	252	1339	0.073	ng	# 40
40) Dibenzo(a,h)anthracene	25.39	278	989	0.053	ng	# 29
41) Benzo(g,h,i)perylene	25.99	276	1560	0.075	ng	# 83

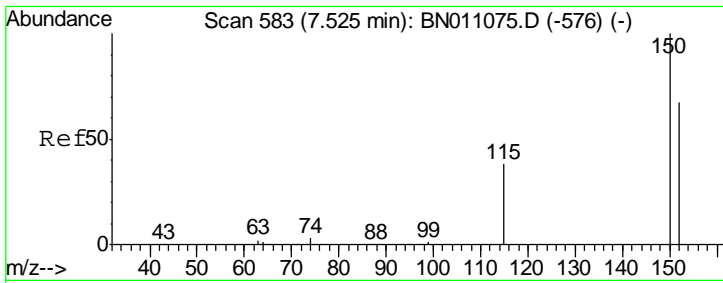
(#) = qualifier out of range (m) = manual integration (+) = signals summed

Data Path : Z:\SVOASRV\HPCHEM1\BNA N\DATA\BN070620\
 Data File : BN011103.D
 Acq On : 06 Jul 2020 12:24
 Operator : CG/JU
 Sample : L1955-11
 Misc : MDL-WTR--04
 ALS Vial : 8 Sample Multiplier: 1

Instrument :
 BNA_N
 Client Sampled :
 MDL-WATER-04

Quant Time: Jul 06 13:23:46 2020
 Quant Method : Z:\SVOASRV\HPCHEM1\BNA N\METHODS\8270-SIM-BN063020.M
 Quant Title : ASP BNA STANDARDS FOR 5 POINT CALIBRATION
 QLast Update : Mon Jul 06 12:31:54 2020
 Response via : Initial Calibration

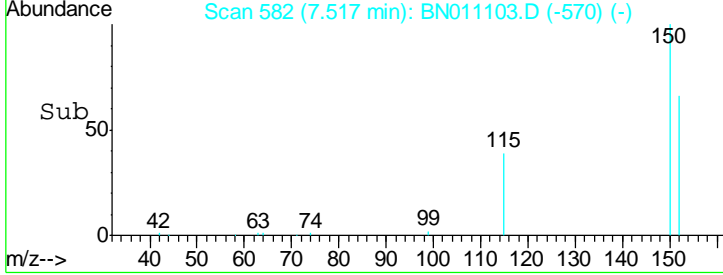
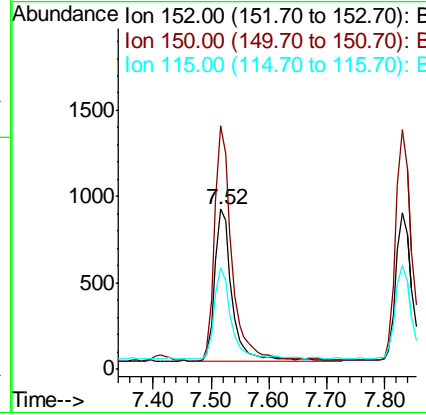
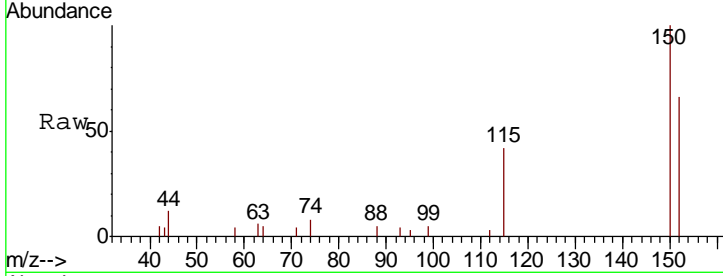




#1
 1,4-Dichlorobenzene-d4
 Concen: 0.400 ng
 RT: 7.52 min Scan# 582
 Delta R.T. 0.00 min
 Lab File: BN011103.D
 Acq: 06 Jul 2020 12:24

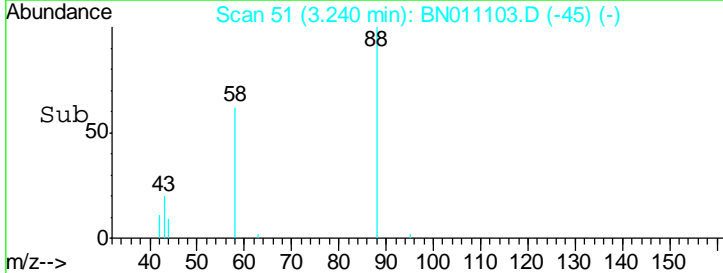
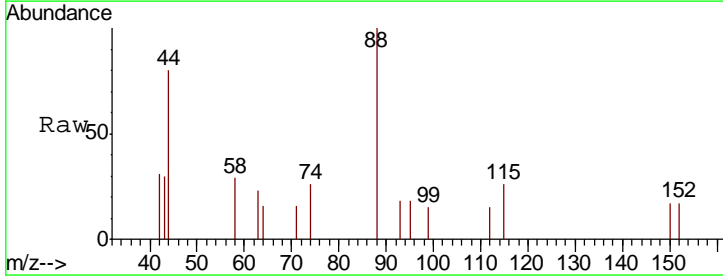
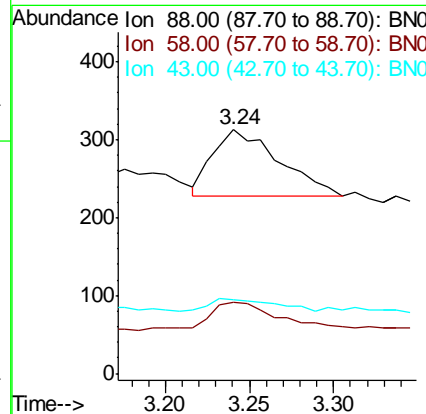
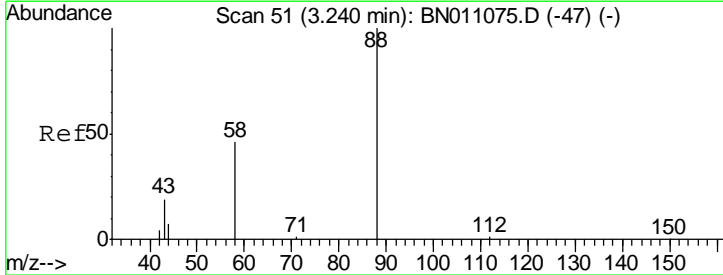
Instrument :
 BNA_N
ClientSampled :
 MDL-WATER-04

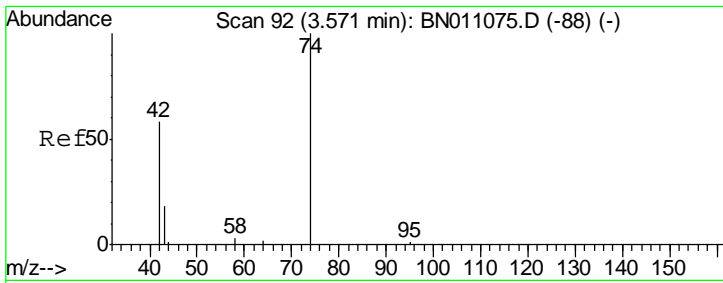
Tgt Ion	Resp	Lower	Upper
152	1815		
150	100	117.4	176.0
115	63.8	47.9	71.9



#2
 1,4-Dioxane
 Concen: 0.090 ng
 RT: 3.24 min Scan# 51
 Delta R.T. 0.00 min
 Lab File: BN011103.D
 Acq: 06 Jul 2020 12:24

Tgt Ion	Resp	Lower	Upper
88	230		
58	100	38.6	57.8#
43	19.1	15.4	23.0

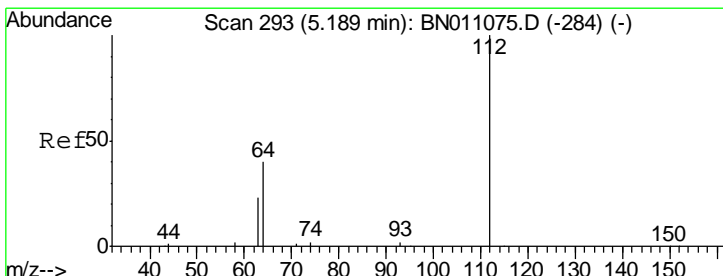
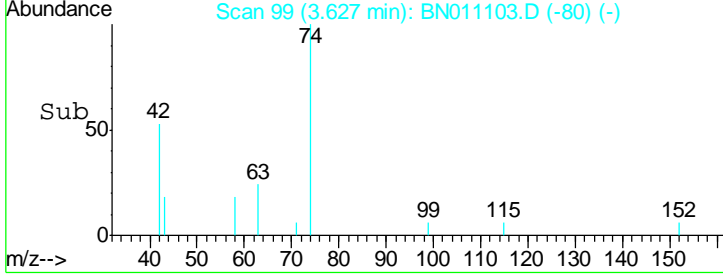
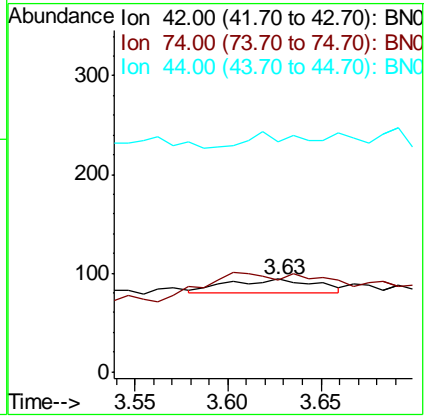
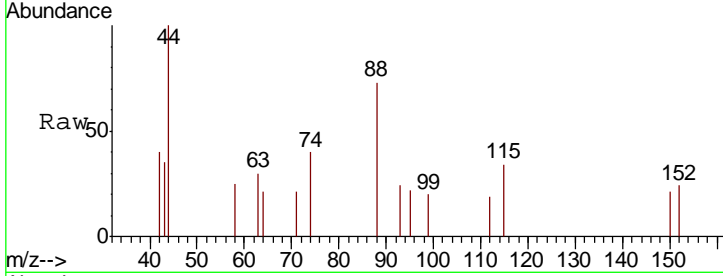




#3
 n-Nitrosodimethylamine
 Concen: 0.035 ng/ml
 RT: 3.63 min Scan# 99
 Delta R.T. 0.06 min
 Lab File: BN011103.D
 Acq: 06 Jul 2020 12:24

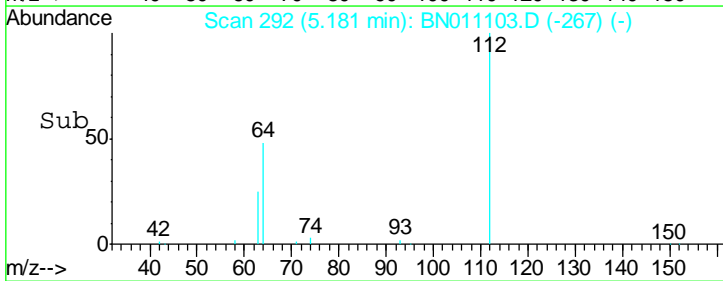
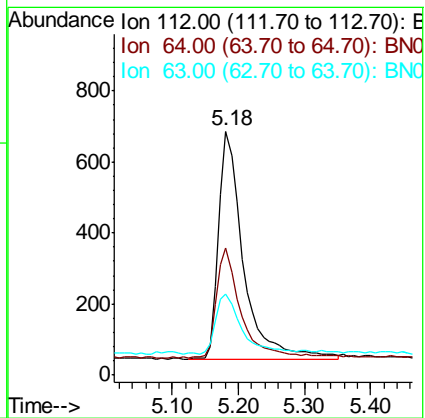
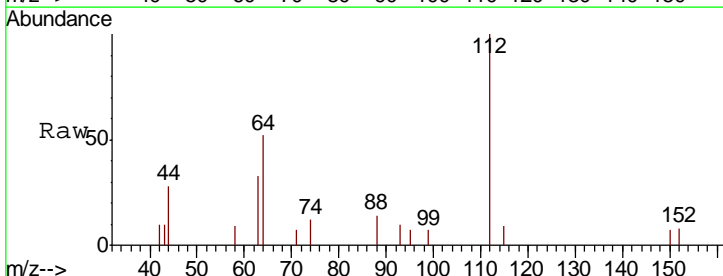
Instrument :
 BNA_N
ClientSampled :
 MDL-WATER-04

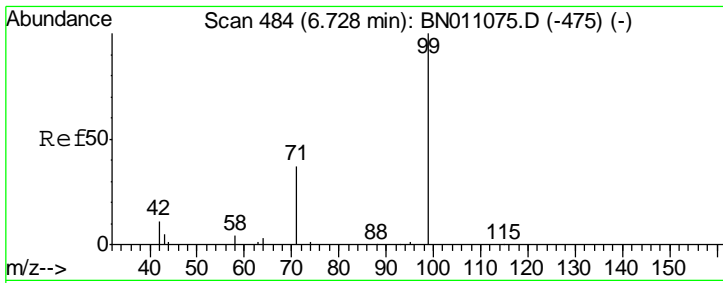
Tgt Ion	Resp	Lower	Upper
42	100		
74	11.1	142.5	213.7#
44	51.1	0.0	0.0#



#4
 2-Fluorophenol
 Concen: 0.368 ng/ml
 RT: 5.18 min Scan# 292
 Delta R.T. 0.00 min
 Lab File: BN011103.D
 Acq: 06 Jul 2020 12:24

Tgt Ion	Resp	Lower	Upper
112	100		
64	47.4	36.5	54.7
63	27.4	20.6	30.8

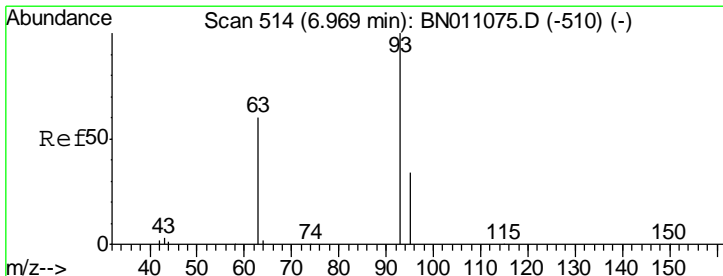
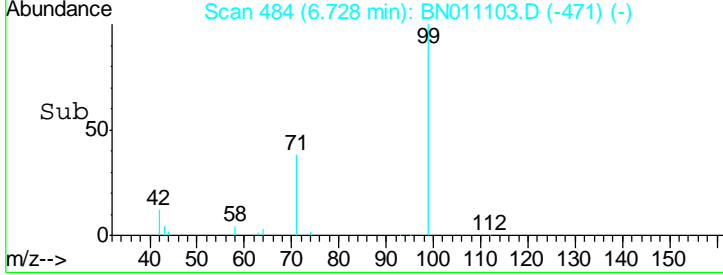
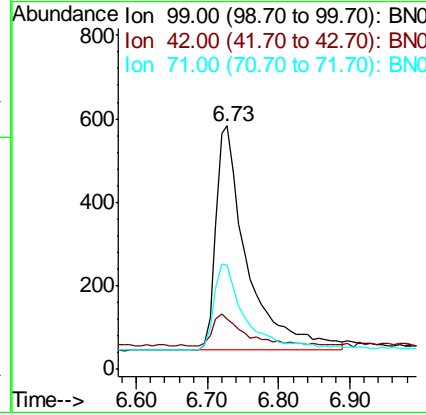
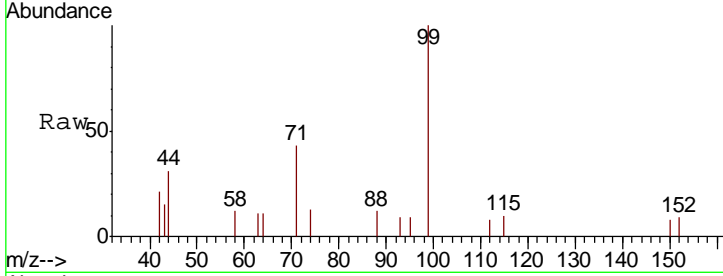




#5
 Phenol-d6
 Concen: 0.316 ng
 RT: 6.73 min Scan# 484
 Delta R.T. 0.01 min
 Lab File: BN011103.D
 Acq: 06 Jul 2020 12:24

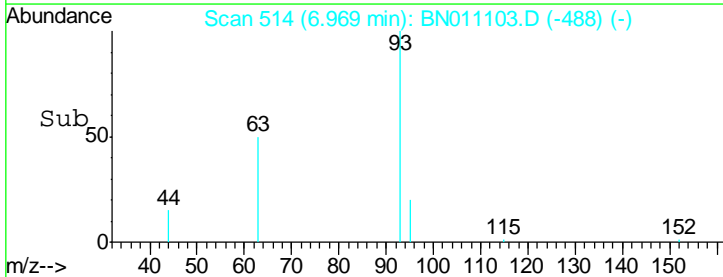
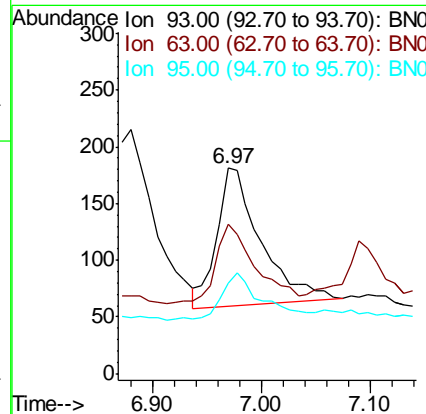
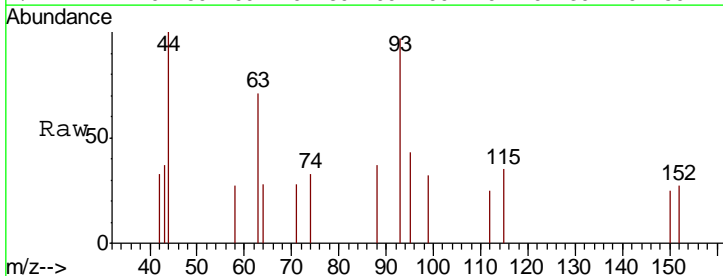
Instrument :
 BNA_N
 ClientSampled :
 MDL-WATER-04

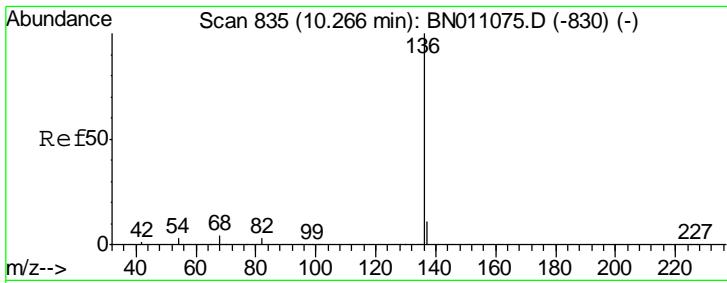
Tgt Ion	Resp	Lower	Upper
99	1639		
42	14.5	9.8	14.8
71	38.7	30.7	46.1



#6
 bis(2-Chloroethyl)ether
 Concen: 0.073 ng
 RT: 6.97 min Scan# 514
 Delta R.T. 0.01 min
 Lab File: BN011103.D
 Acq: 06 Jul 2020 12:24

Tgt Ion	Resp	Lower	Upper
93	345		
63	51.6	47.4	71.2
95	32.2	26.4	39.6

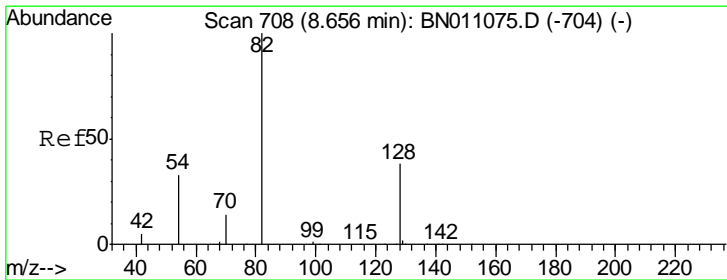
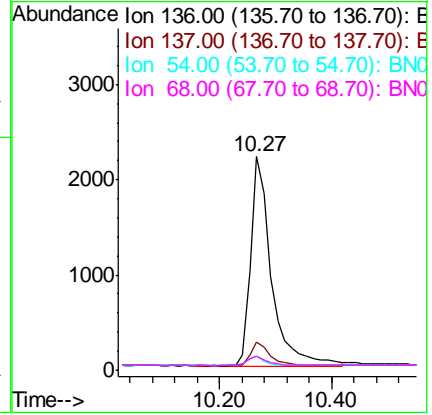
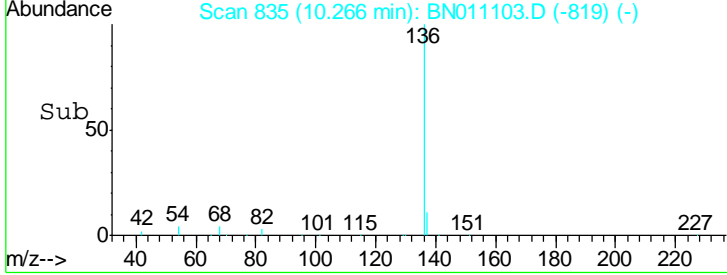
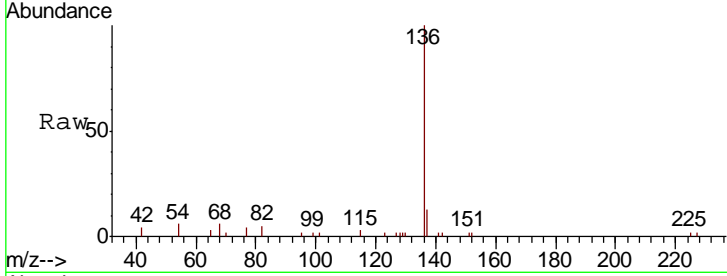




#7
 Naphthalene-d8
 Concen: 0.400 ng
 RT: 10.27 min Scan# 835
 Delta R.T. 0.00 min
 Lab File: BN011103.D
 Acq: 06 Jul 2020 12:24

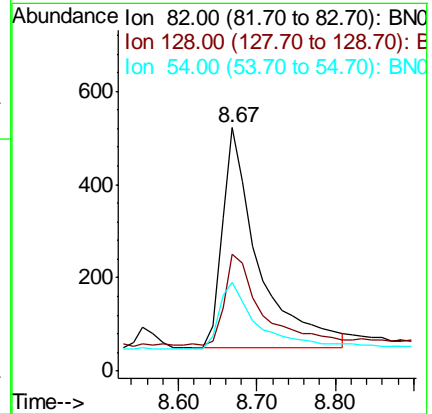
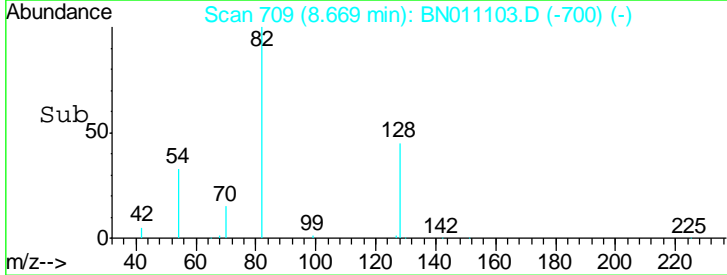
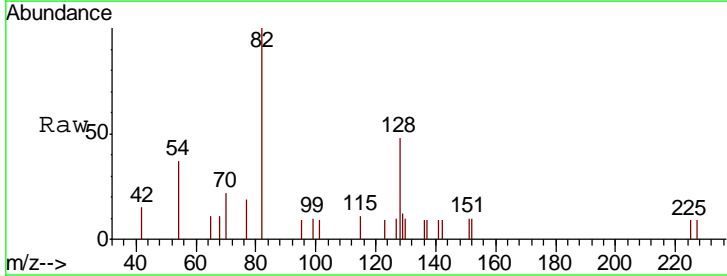
Instrument :
 BNA_N
ClientSampled :
 MDL-WATER-04

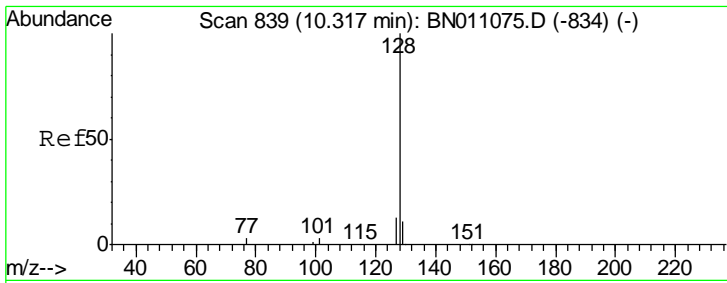
Tgt Ion	Resp	Lower	Upper
136	100		
137	13.3	9.6	14.4
54	6.4	3.8	5.6
68	6.4	4.3	6.5



#8
 Nitrobenzene-d5
 Concen: 0.312 ng
 RT: 8.67 min Scan# 709
 Delta R.T. 0.01 min
 Lab File: BN011103.D
 Acq: 06 Jul 2020 12:24

Tgt Ion	Resp	Lower	Upper
82	100		
128	47.9	34.2	51.2
54	36.6	29.4	44.0

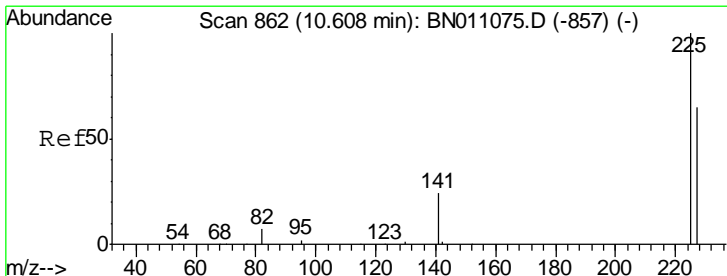
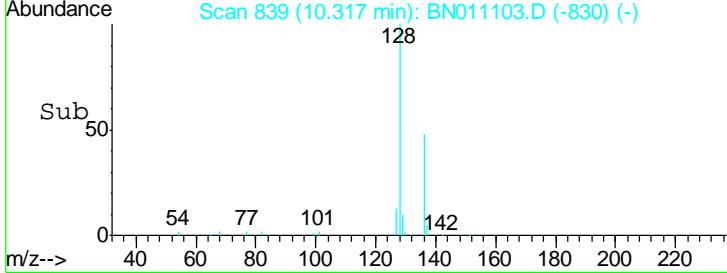
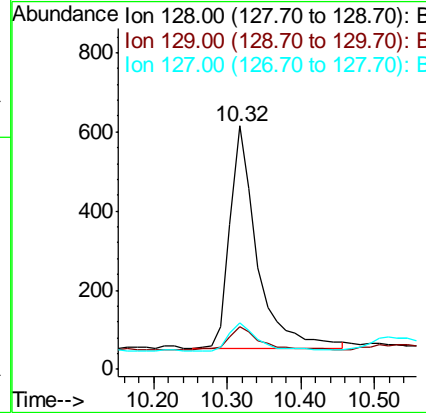
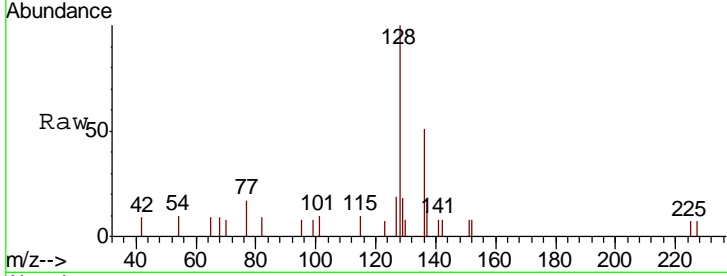




#9
 Naphthalene
 Concen: 0.085 ng
 RT: 10.32 min Scan# 839
 Delta R.T. 0.01 min
 Lab File: BN011103.D
 Acq: 06 Jul 2020 12:24

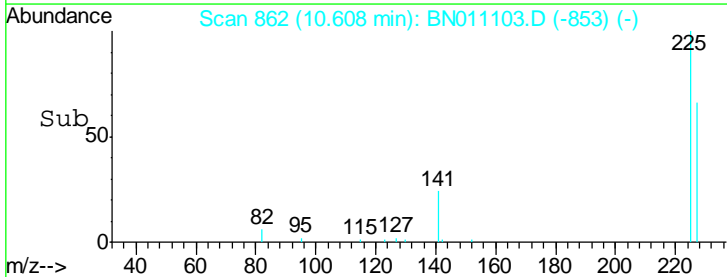
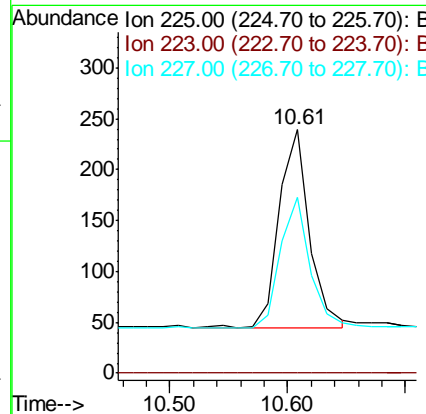
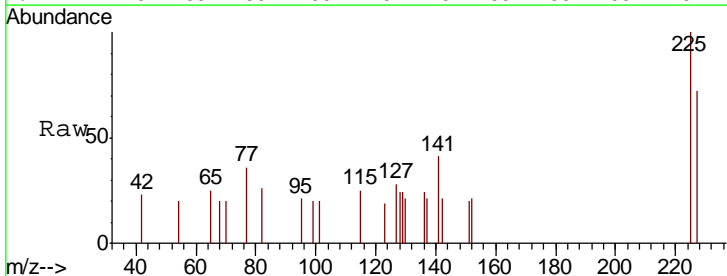
Instrument :
 BNA_N
ClientSampled :
 MDL-WATER-04

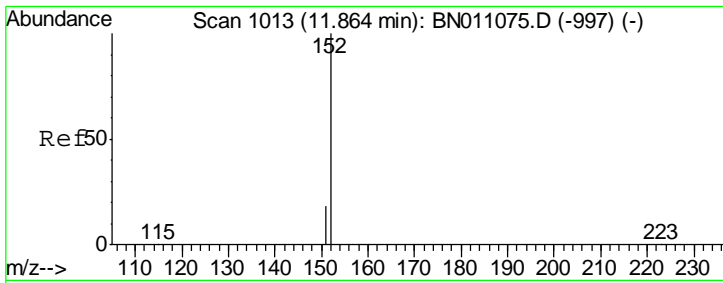
Tgt Ion	Resp	Lower	Upper
128	1434		
129	17.6	9.8	14.8#
127	19.3	11.3	16.9#



#10
 Hexachlorobutadiene
 Concen: 0.081 ng
 RT: 10.61 min Scan# 862
 Delta R.T. 0.01 min
 Lab File: BN011103.D
 Acq: 06 Jul 2020 12:24

Tgt Ion	Resp	Lower	Upper
225	350		
223	0.0	0.0	0.0
227	64.0	51.4	77.2

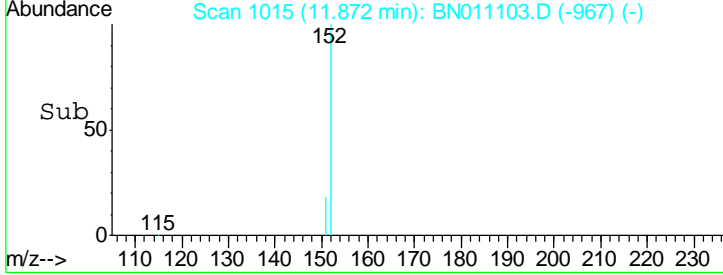
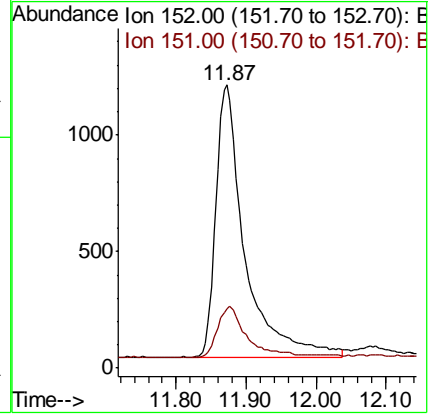
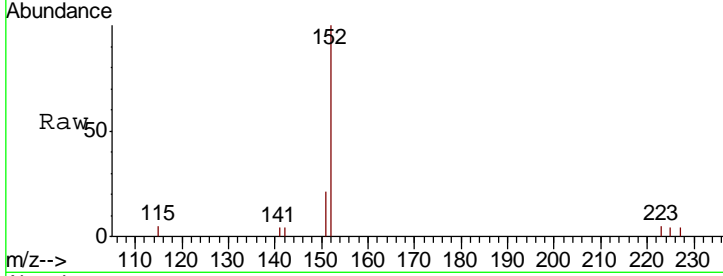




#11
 2-Methylnaphthalene-d10
 Concen: 0.341 ng
 RT: 11.87 min Scan# 1015
 Delta R.T. 0.01 min
 Lab File: BN011103.D
 Acq: 06 Jul 2020 12:24

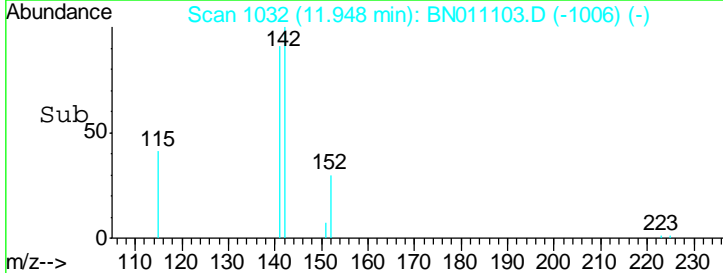
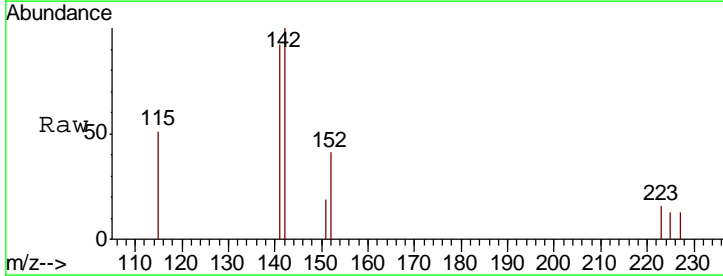
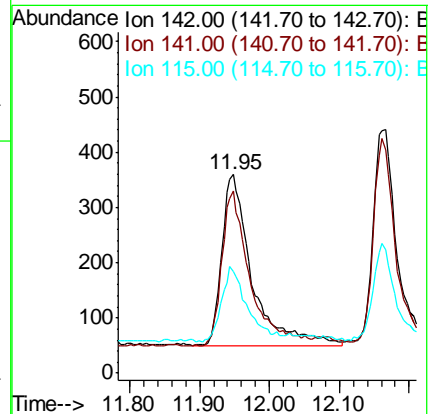
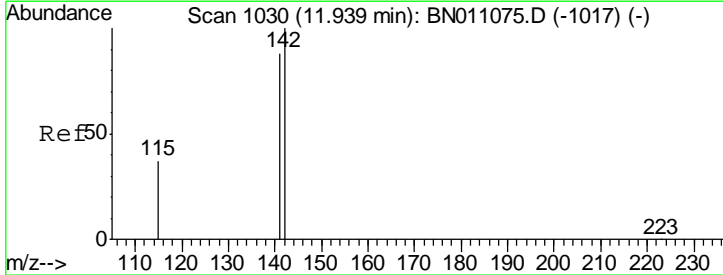
Instrument :
 BNA_N
 ClientSampled :
 MDL-WATER-04

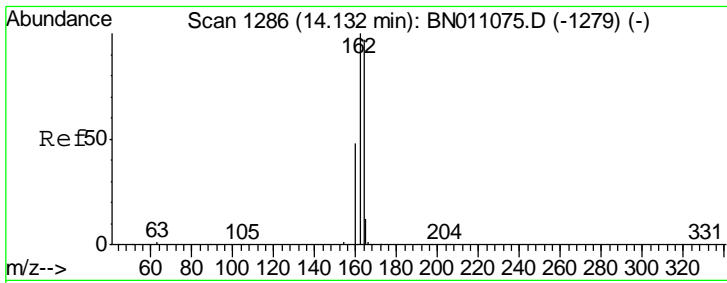
Tgt Ion	Resp	Lower	Upper
152	100		
151	19.4	16.6	24.8



#12
 2-Methylnaphthalene
 Concen: 0.082 ng
 RT: 11.95 min Scan# 1032
 Delta R.T. 0.01 min
 Lab File: BN011103.D
 Acq: 06 Jul 2020 12:24

Tgt Ion	Resp	Lower	Upper
142	100		
141	91.9	70.3	105.5
115	51.3	31.2	46.8#

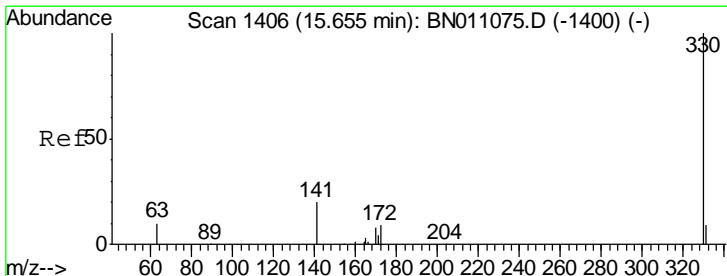
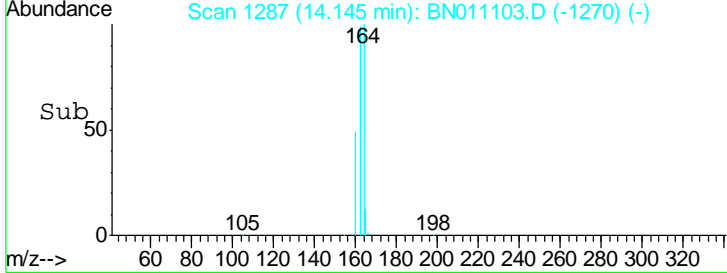
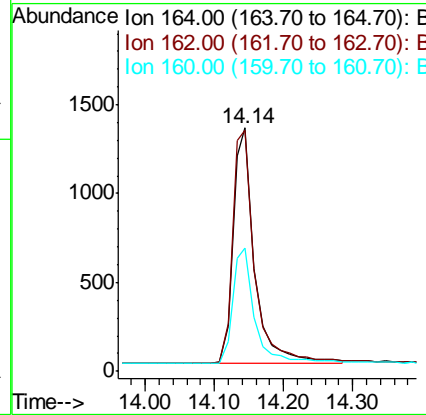
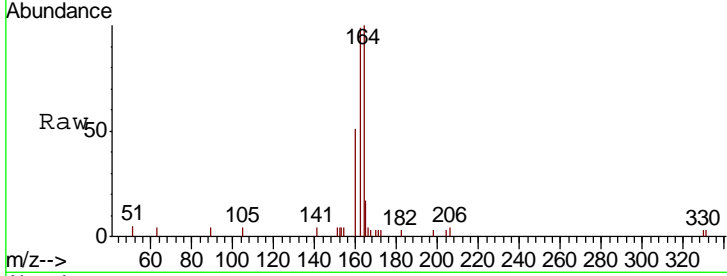




#13
 Acenaphthene-d10
 Concen: 0.400 ng
 RT: 14.14 min Scan# 1287
 Delta R.T. 0.01 min
 Lab File: BN011103.D
 Acq: 06 Jul 2020 12:24

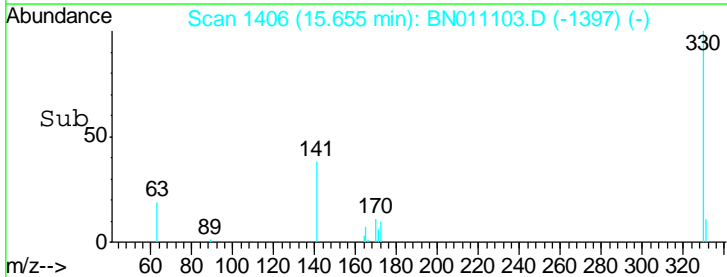
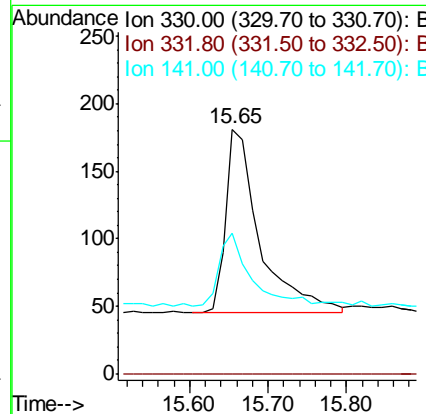
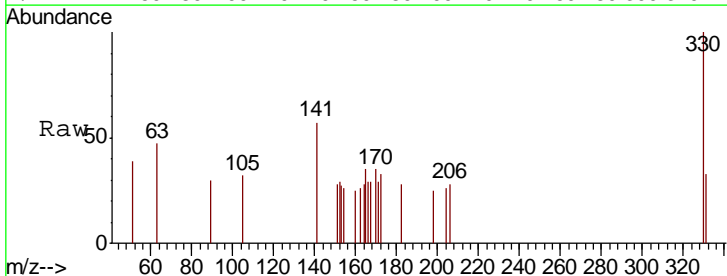
Instrument :
 BNA_N
 ClientSampled :
 MDL-WATER-04

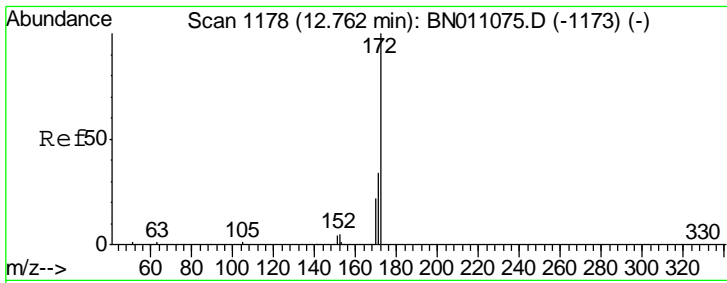
Tgt Ion	Ratio	Lower	Upper
164	100		
162	99.2	82.3	123.5
160	50.8	40.6	61.0



#14
 2,4,6-Tribromophenol
 Concen: 0.341 ng
 RT: 15.65 min Scan# 1406
 Delta R.T. 0.01 min
 Lab File: BN011103.D
 Acq: 06 Jul 2020 12:24

Tgt Ion	Ratio	Lower	Upper
330	100		
332	0.0	0.0	0.0
141	38.7	32.6	49.0

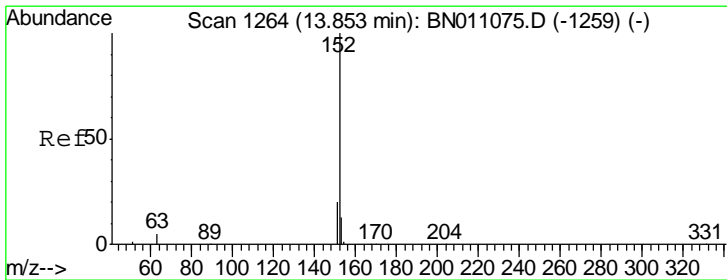
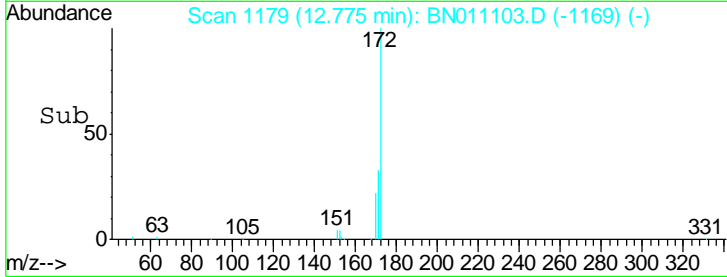
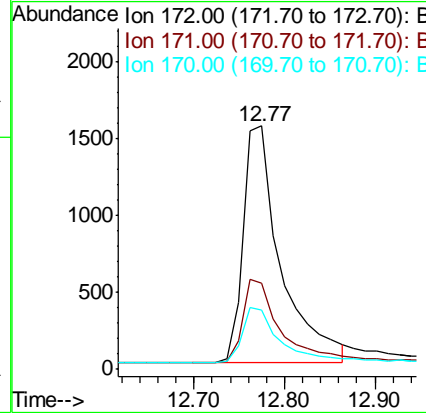
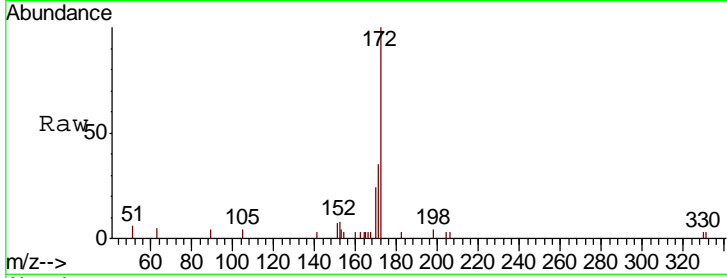




#15
 2-Fluorobiphenyl
 Concen: 0.325 ng
 RT: 12.77 min Scan# 1179
 Delta R.T. 0.03 min
 Lab File: BN011103.D
 Acq: 06 Jul 2020 12:24

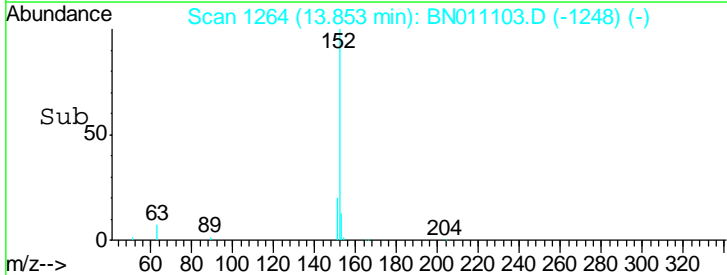
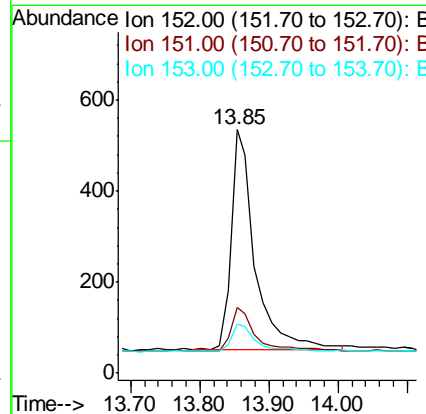
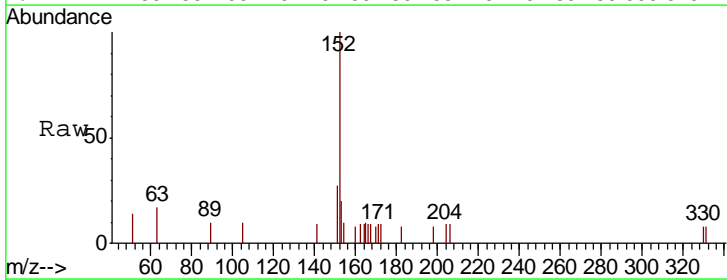
Instrument :
 BNA_N
 ClientSampleId :
 MDL-WATER-04

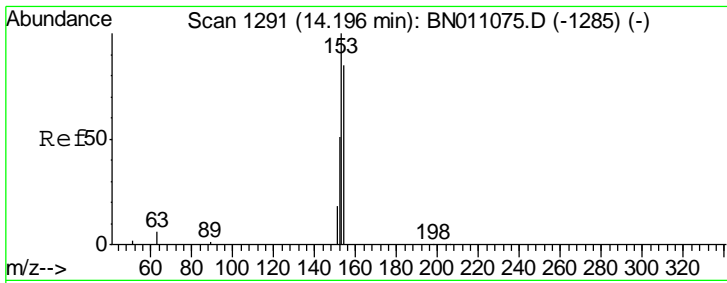
Tgt Ion	Resp	Lower	Upper
172	100		
171	35.1	27.9	41.9
170	24.1	18.7	28.1



#16
 Acenaphthylene
 Concen: 0.080 ng
 RT: 13.85 min Scan# 1264
 Delta R.T. 0.00 min
 Lab File: BN011103.D
 Acq: 06 Jul 2020 12:24

Tgt Ion	Resp	Lower	Upper
152	100		
151	20.1	15.8	23.8
153	13.0	10.8	16.2

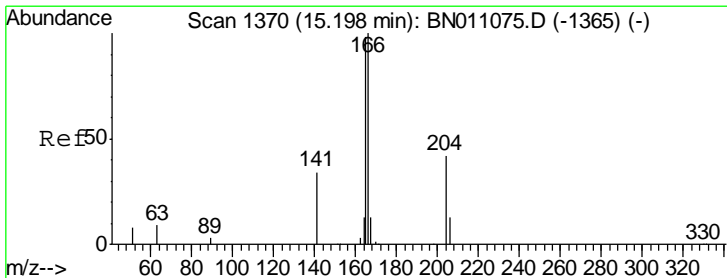
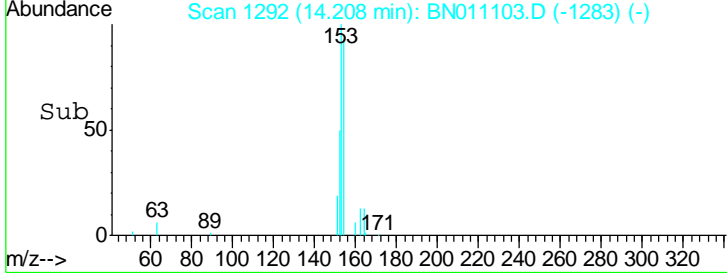
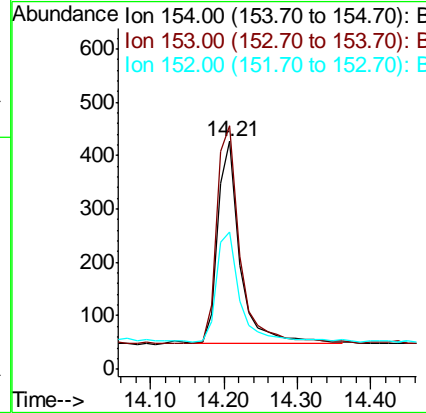
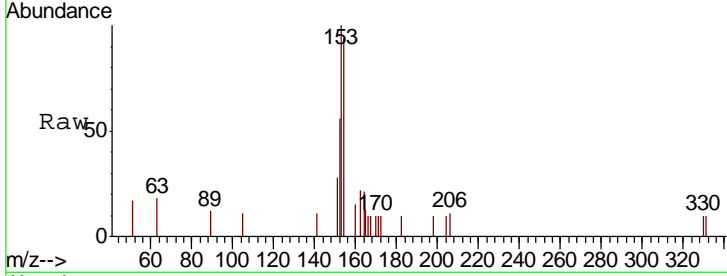




#17
 Acenaphthene
 Concen: 0.080 ng
 RT: 14.21 min Scan# 1292
 Delta R.T. 0.01 min
 Lab File: BN011103.D
 Acq: 06 Jul 2020 12:24

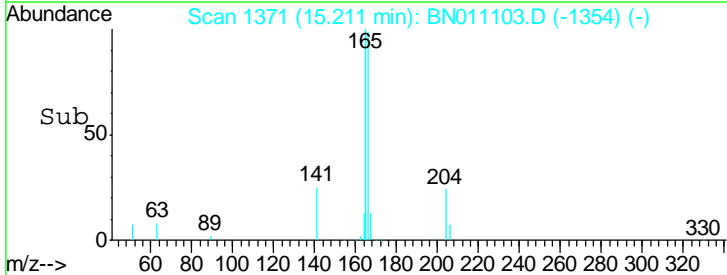
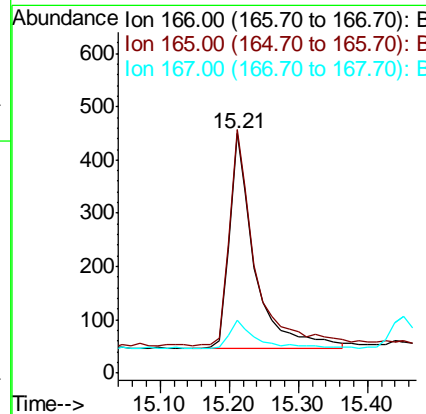
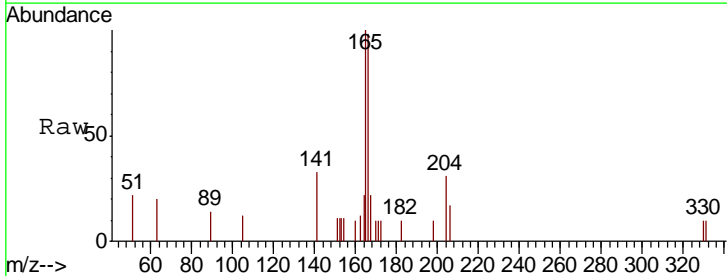
Instrument : BNA_N
 ClientSampled : MDL-WATER-04

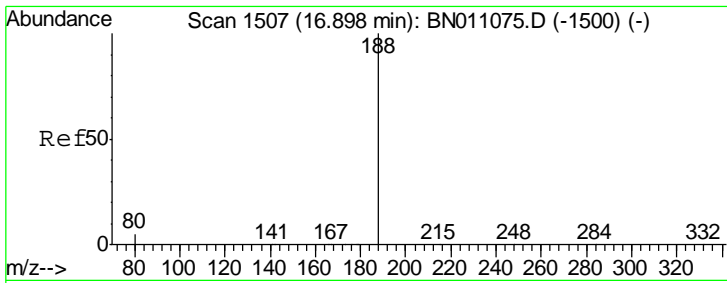
Tgt Ion	Resp	Lower	Upper
154	100		
153	114.5	91.7	137.5
152	59.1	46.8	70.2



#18
 Fluorene
 Concen: 0.083 ng
 RT: 15.21 min Scan# 1371
 Delta R.T. 0.01 min
 Lab File: BN011103.D
 Acq: 06 Jul 2020 12:24

Tgt Ion	Resp	Lower	Upper
166	100		
165	101.7	78.9	118.3
167	14.2	10.9	16.3

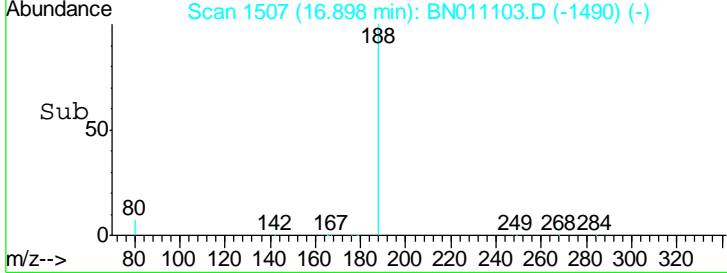
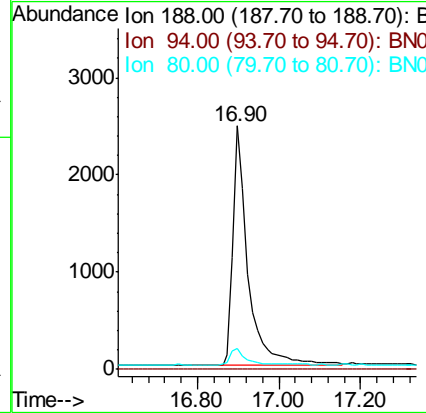
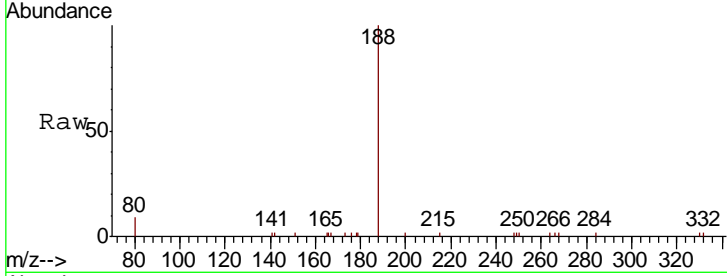




#19
 Phenanthrene-d10
 Concen: 0.400 ng
 RT: 16.90 min Scan# 1507
 Delta R.T. 0.01 min
 Lab File: BN011103.D
 Acq: 06 Jul 2020 12:24

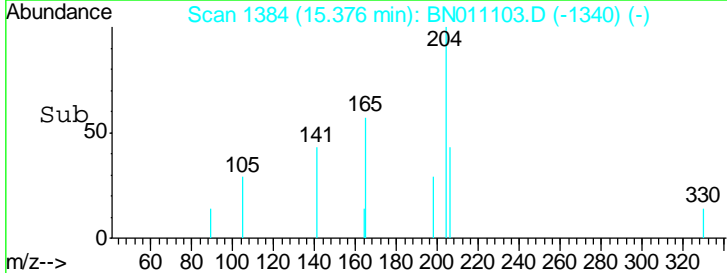
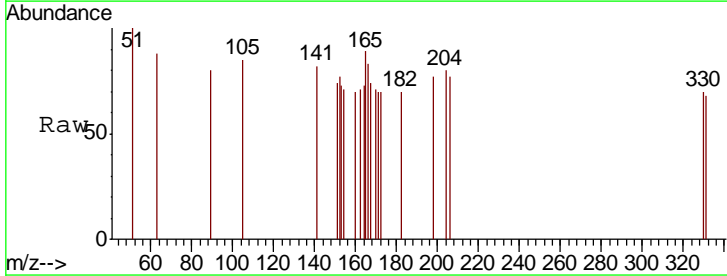
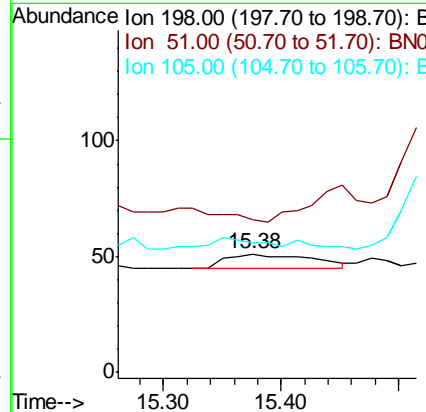
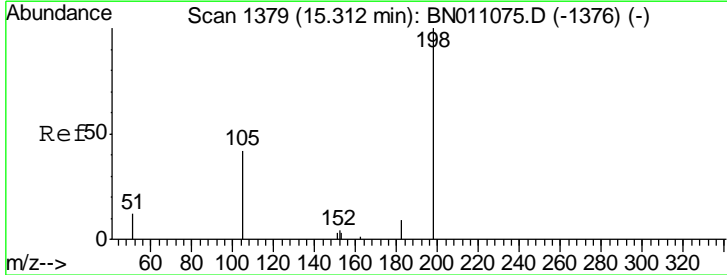
Instrument :
 BNA_N
 ClientSampled :
 MDL-WATER-04

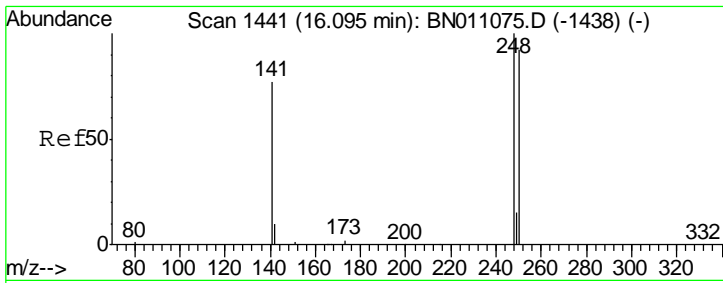
Tgt Ion	Resp	Lower	Upper
188	100		
94	0.0	0.0	0.0
80	8.8	5.3	7.9#



#20
 4,6-Dinitro-2-methylphenol
 Concen: 0.046 ng
 RT: 15.38 min Scan# 1384
 Delta R.T. 0.06 min
 Lab File: BN011103.D
 Acq: 06 Jul 2020 12:24

Tgt Ion	Resp	Lower	Upper
198	100		
51	129.4	58.2	87.4#
105	109.8	59.0	88.4#

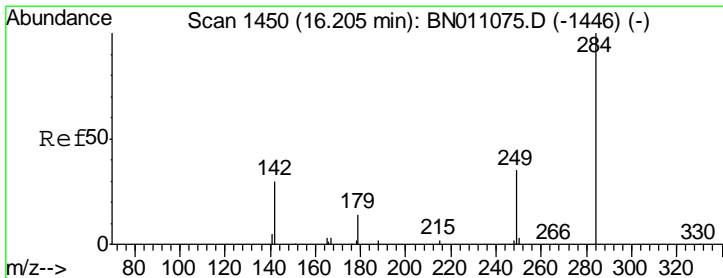
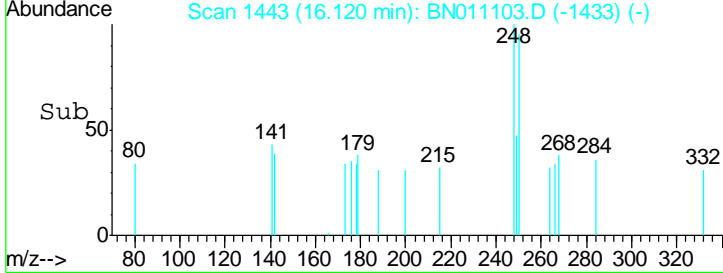
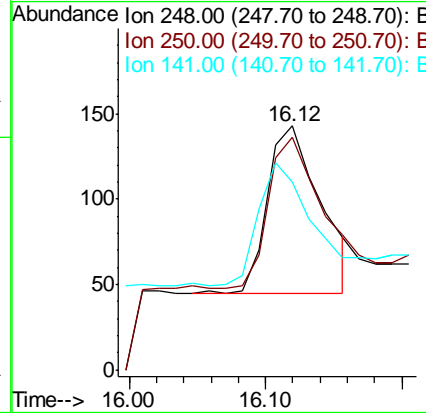
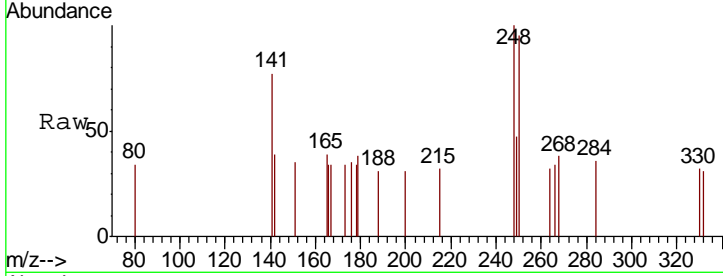




#21
 4-Bromophenyl-phenylether
 Concen: 0.064 ng
 RT: 16.12 min Scan# 1443
 Delta R.T. 0.02 min
 Lab File: BN011103.D
 Acq: 06 Jul 2020 12:24

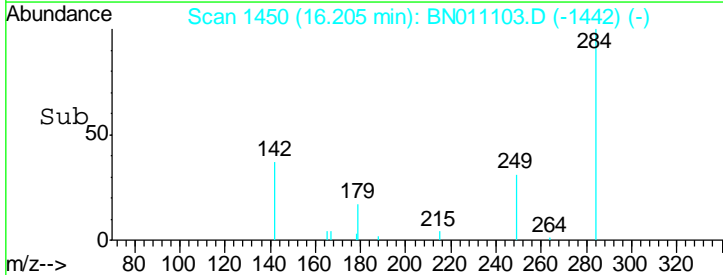
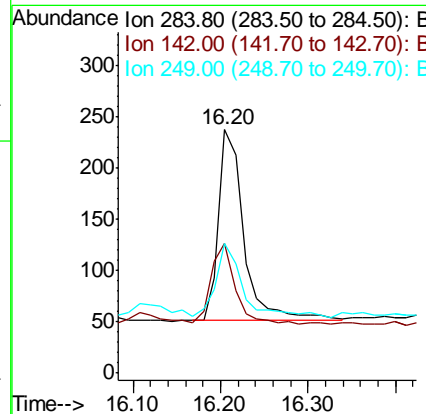
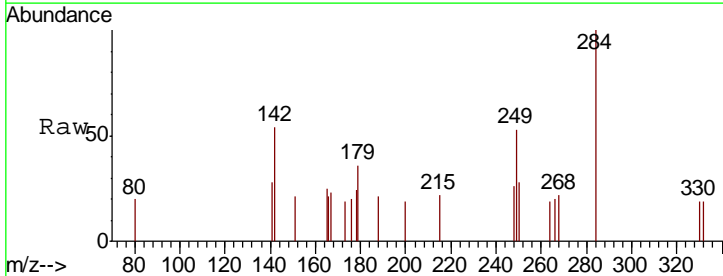
Instrument :
 BNA_N
 ClientSampled :
 MDL-WATER-04

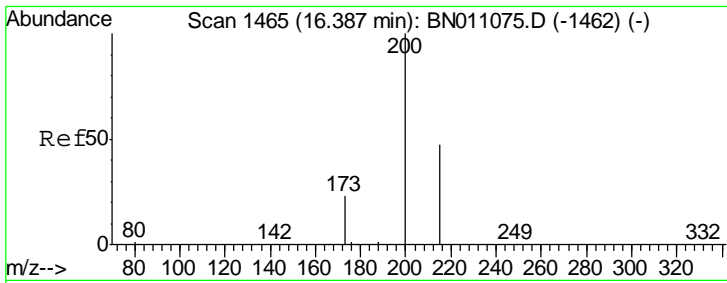
Tgt Ion	Resp	Lower	Upper
248	263		
248	100		
250	95.1	73.8	110.8
141	76.9	63.1	94.7



#22
 Hexachlorobenzene
 Concen: 0.079 ng
 RT: 16.20 min Scan# 1450
 Delta R.T. 0.00 min
 Lab File: BN011103.D
 Acq: 06 Jul 2020 12:24

Tgt Ion	Resp	Lower	Upper
284	378		
284	100		
142	37.6	33.3	49.9
249	42.1	27.4	41.2#

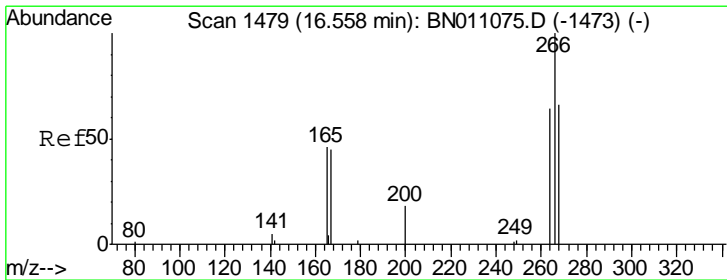
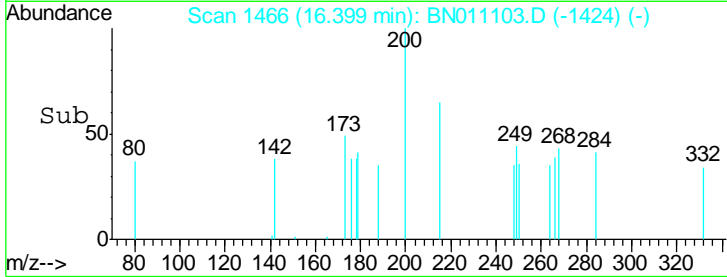
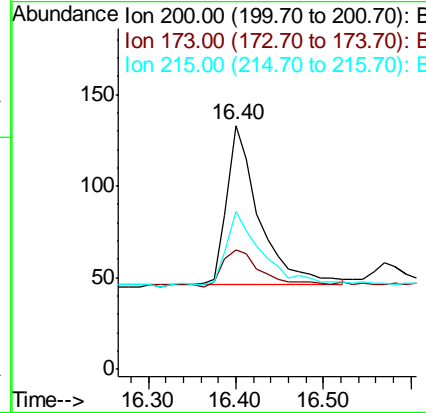
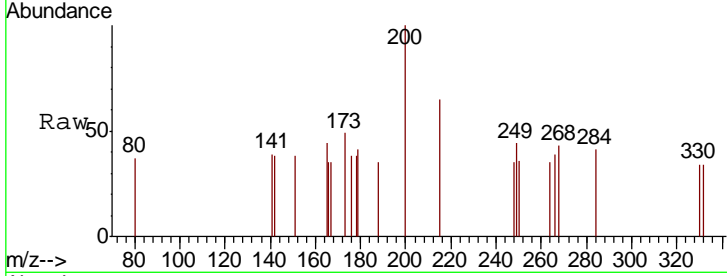




#23
 Atrazine
 Concen: 0.079 ng
 RT: 16.40 min Scan# 1466
 Delta R.T. 0.01 min
 Lab File: BN011103.D
 Acq: 06 Jul 2020 12:24

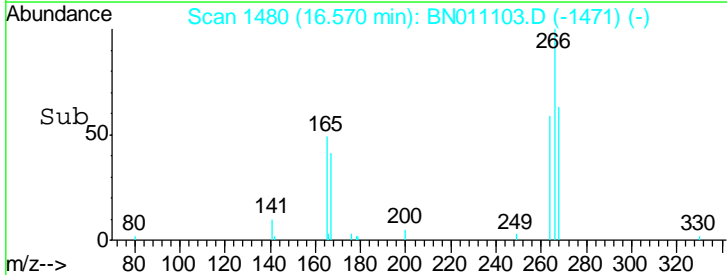
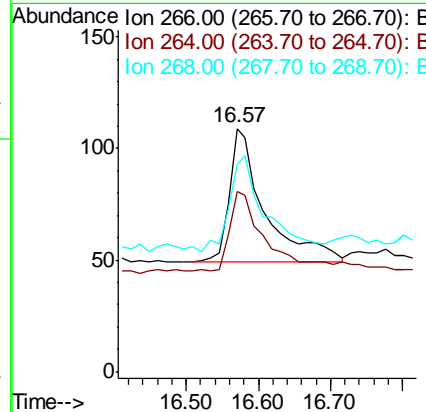
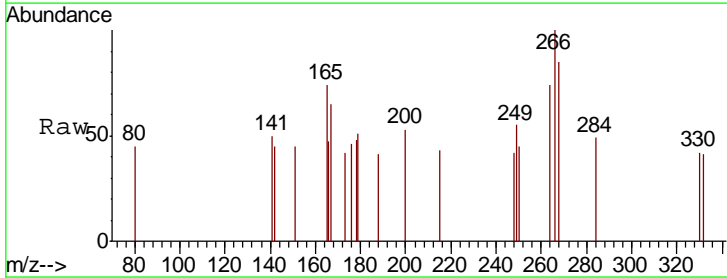
Instrument :
 BNA_N
 ClientSampled :
 MDL-WATER-04

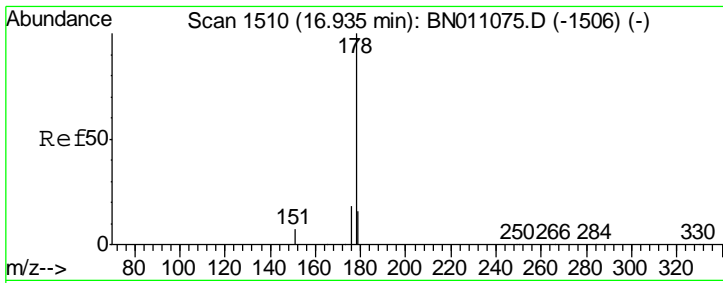
Tgt Ion	Ratio	Lower	Upper
200	100		
173	48.9	22.8	34.2#
215	64.7	40.7	61.1#



#24
 Pentachlorophenol
 Concen: 0.161 ng
 RT: 16.57 min Scan# 1480
 Delta R.T. 0.01 min
 Lab File: BN011103.D
 Acq: 06 Jul 2020 12:24

Tgt Ion	Ratio	Lower	Upper
266	100		
264	65.9	47.4	71.0
268	65.9	55.0	82.4

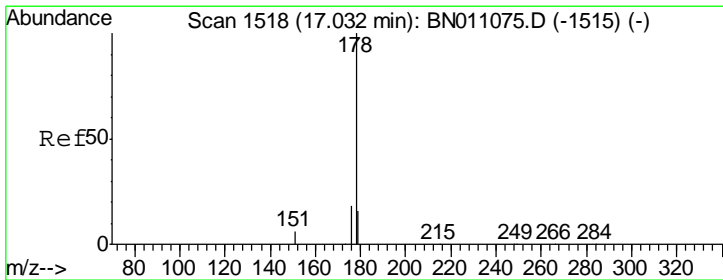
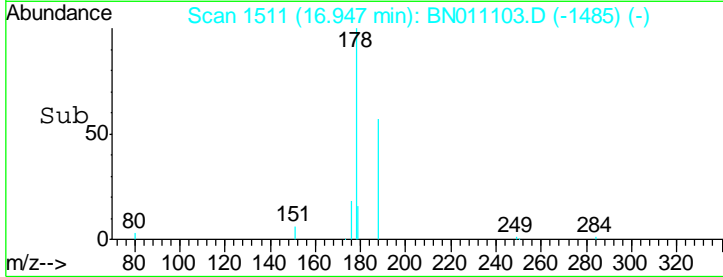
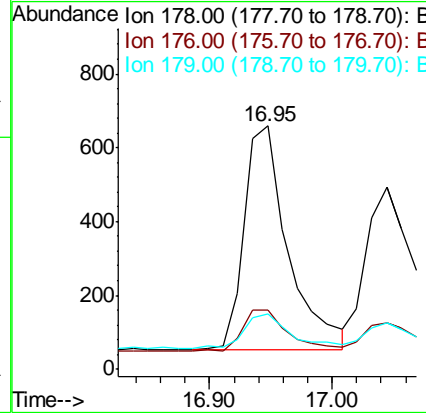
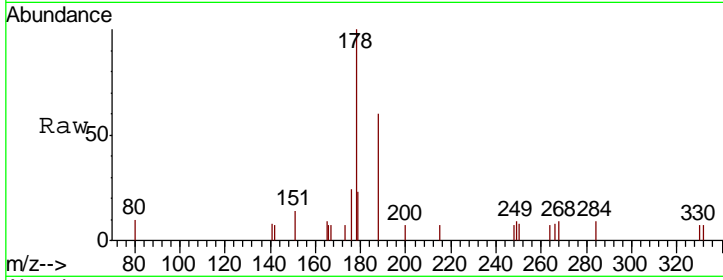




#25
 Phenanthrene
 Concen: 0.076 ng
 RT: 16.95 min Scan# 1511
 Delta R.T. 0.01 min
 Lab File: BN011103.D
 Acq: 06 Jul 2020 12:24

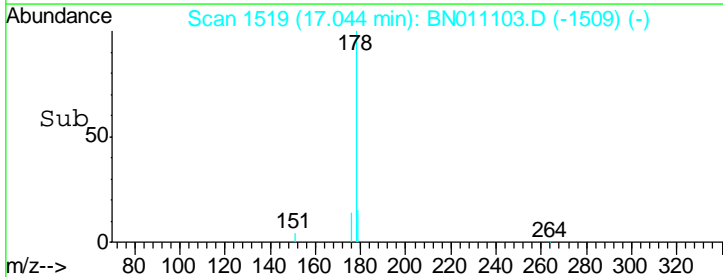
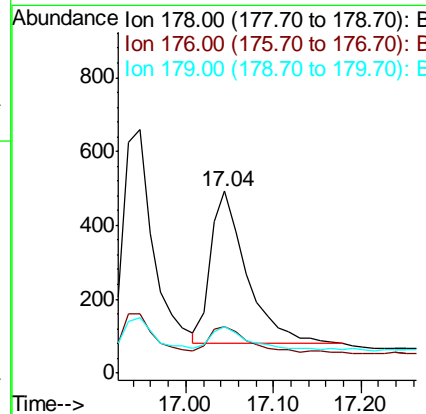
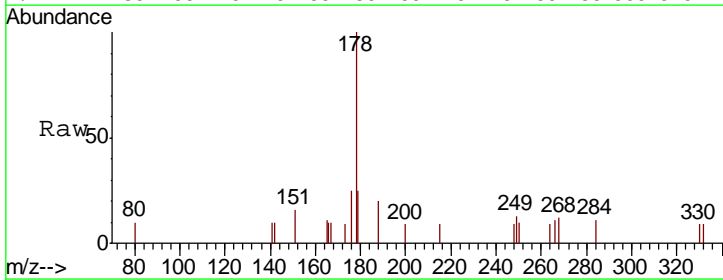
Instrument :
 BNA_N
 ClientSampled :
 MDL-WATER-04

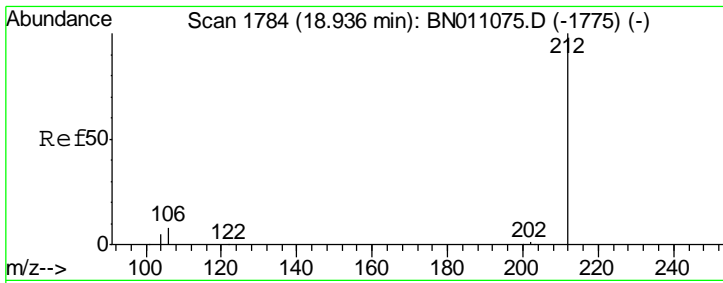
Tgt Ion	Resp	Lower	Upper
178	1517		
176	19.3	15.0	22.6
179	16.3	12.5	18.7



#26
 Anthracene
 Concen: 0.072 ng
 RT: 17.04 min Scan# 1519
 Delta R.T. 0.02 min
 Lab File: BN011103.D
 Acq: 06 Jul 2020 12:24

Tgt Ion	Resp	Lower	Upper
178	1183		
176	17.8	14.2	21.4
179	13.6	12.2	18.2

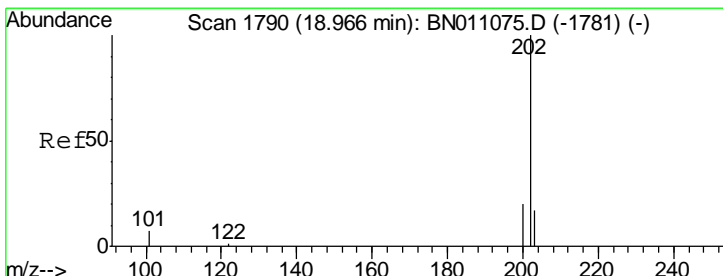
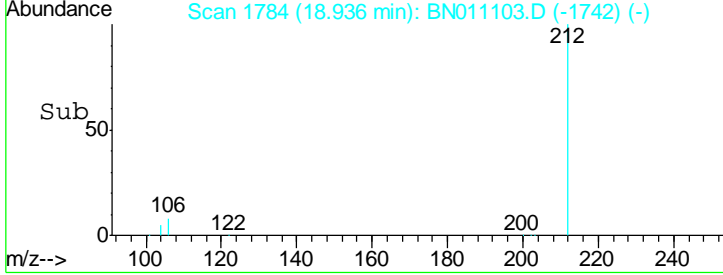
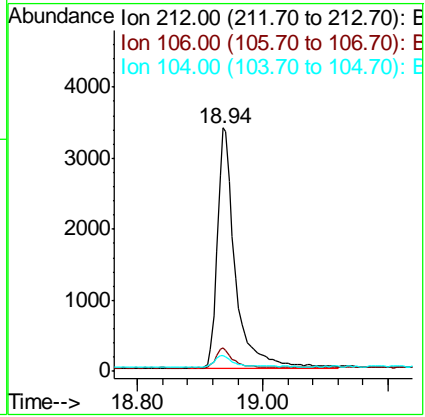
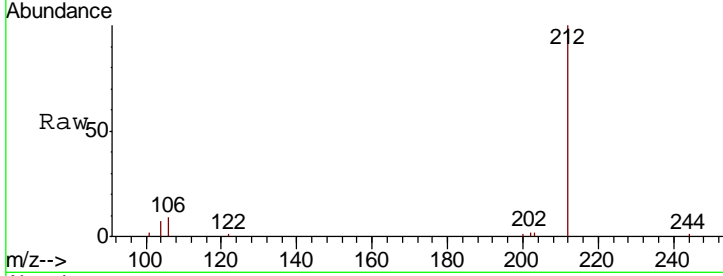




#27
 Fluoranthene-d10
 Concen: 0.364 ng
 RT: 18.94 min Scan# 1784
 Delta R.T. 0.01 min
 Lab File: BN011103.D
 Acq: 06 Jul 2020 12:24

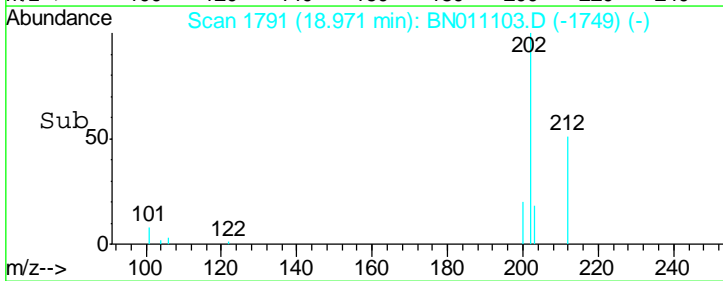
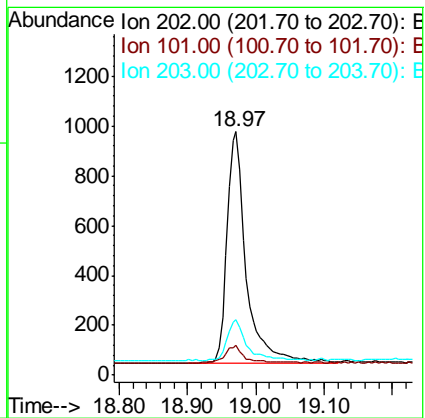
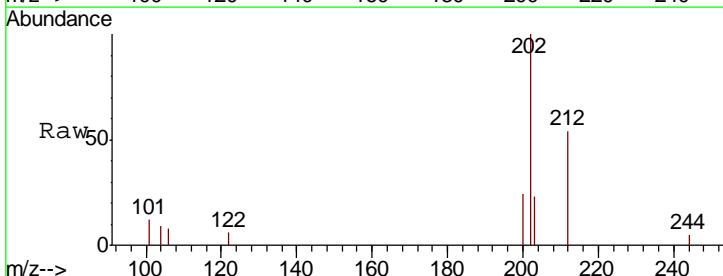
Instrument :
 BNA_N
 ClientSampleId :
 MDL-WATER-04

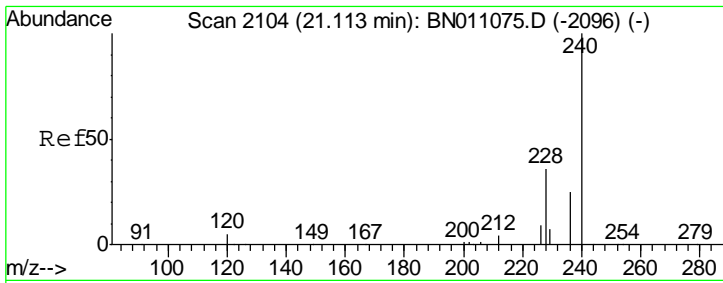
Tgt Ion	Resp	Lower	Upper
212	6752		
106	8.1	7.1	10.7
104	4.8	4.2	6.4



#28
 Fluoranthene
 Concen: 0.082 ng
 RT: 18.97 min Scan# 1791
 Delta R.T. 0.01 min
 Lab File: BN011103.D
 Acq: 06 Jul 2020 12:24

Tgt Ion	Resp	Lower	Upper
202	1829		
101	8.4	6.3	9.5
203	17.4	13.5	20.3

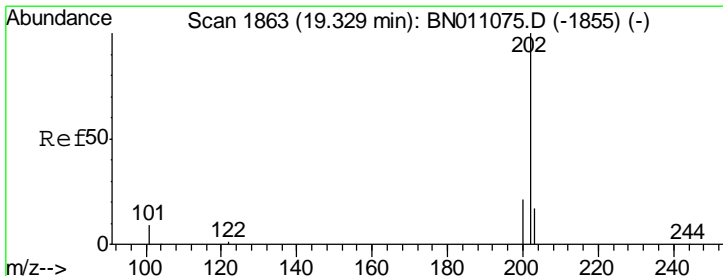
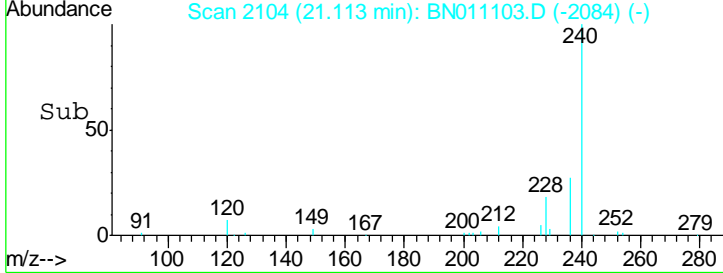
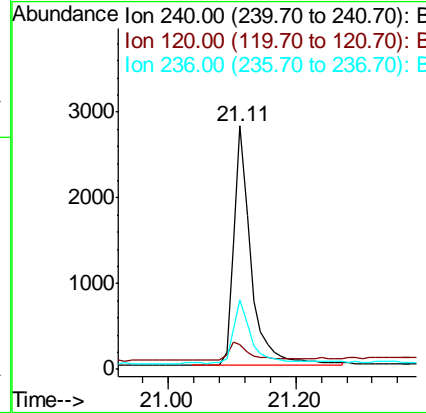
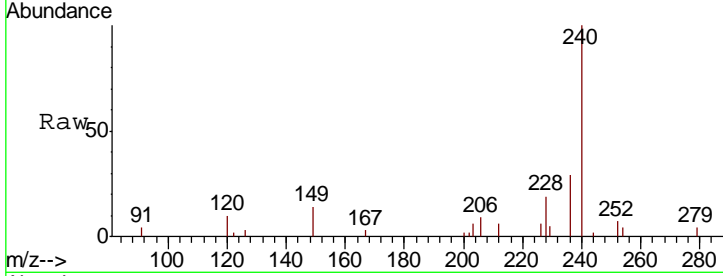




#29
 Chrysene-d12
 Concen: 0.400 ng
 RT: 21.11 min Scan# 2104
 Delta R.T. 0.01 min
 Lab File: BN011103.D
 Acq: 06 Jul 2020 12:24

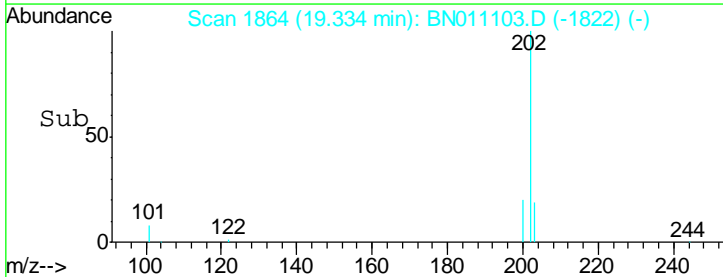
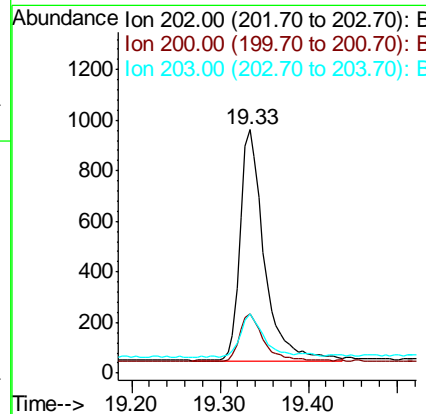
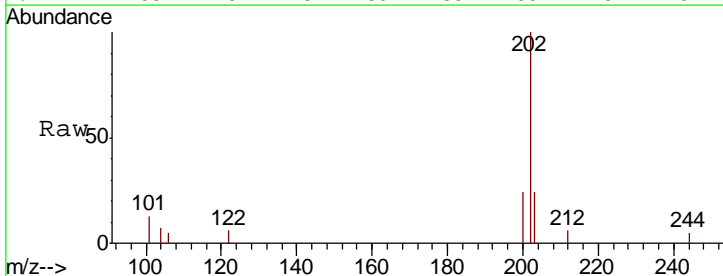
Instrument :
 BNA_N
 ClientSampled :
 MDL-WATER-04

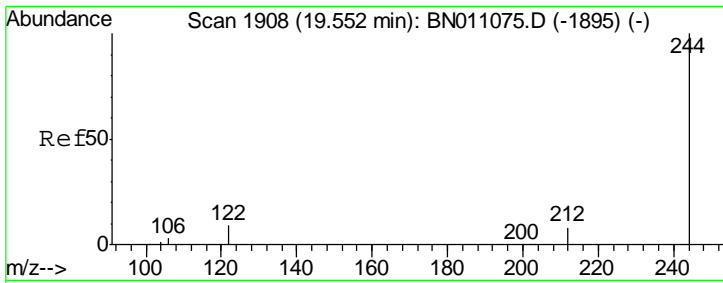
Tgt Ion	Resp	Lower	Upper
240	5166		
120	10.2	6.5	9.7#
236	28.7	21.9	32.9



#30
 Pyrene
 Concen: 0.090 ng
 RT: 19.33 min Scan# 1864
 Delta R.T. 0.01 min
 Lab File: BN011103.D
 Acq: 06 Jul 2020 12:24

Tgt Ion	Resp	Lower	Upper
202	1733		
200	20.8	16.6	25.0
203	17.4	14.2	21.4

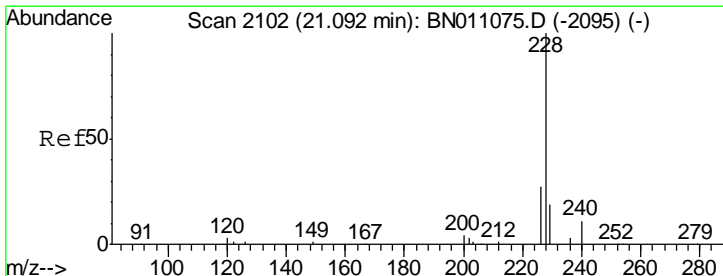
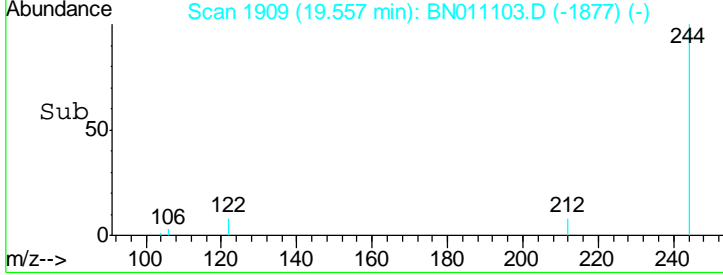
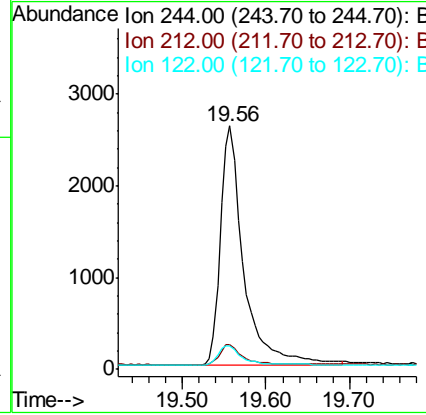
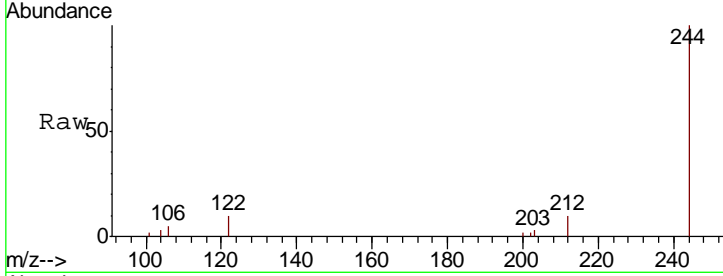




#31
 Terphenyl-d14
 Concen: 0.375 ng
 RT: 19.56 min Scan# 1909
 Delta R.T. 0.01 min
 Lab File: BN011103.D
 Acq: 06 Jul 2020 12:24

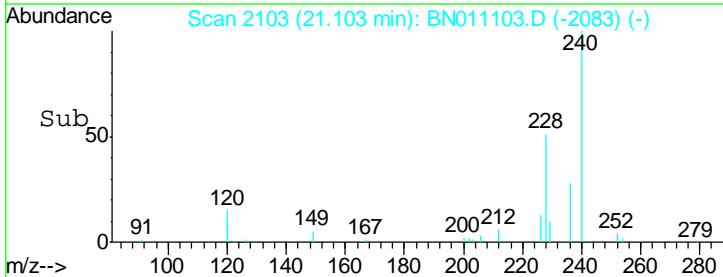
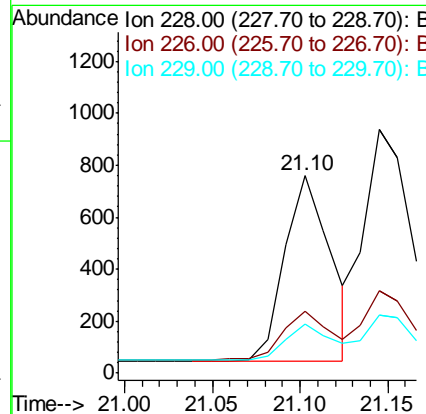
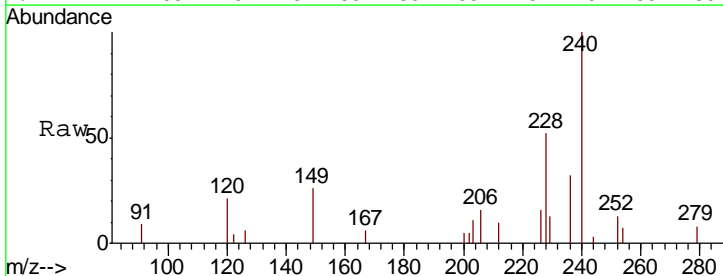
Instrument :
 BNA_N
 ClientSampled :
 MDL-WATER-04

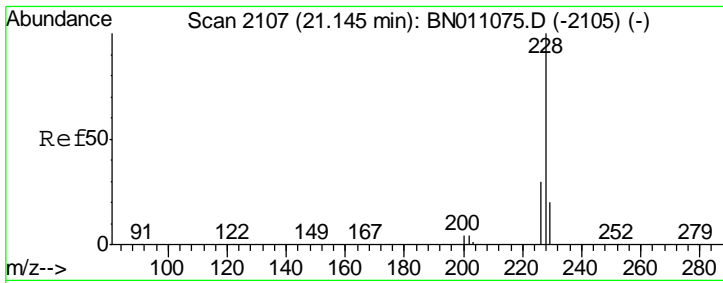
Tgt Ion	Resp	Lower	Upper
244	5040		
212	10.0	7.5	11.3
122	9.6	8.2	12.4



#32
 Benzo(a)anthracene
 Concen: 0.075 ng
 RT: 21.10 min Scan# 2103
 Delta R.T. 0.01 min
 Lab File: BN011103.D
 Acq: 06 Jul 2020 12:24

Tgt Ion	Resp	Lower	Upper
228	1299		
226	31.3	22.0	33.0
229	24.9	16.1	24.1

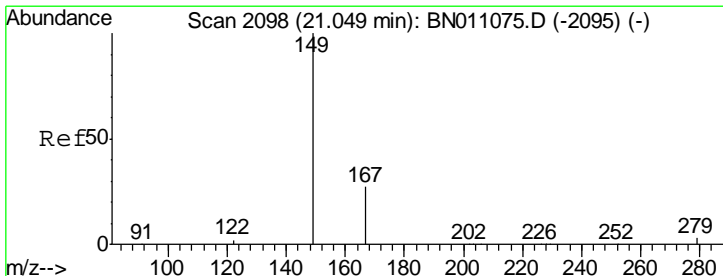
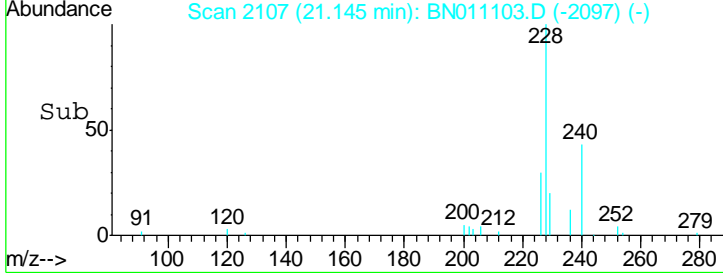
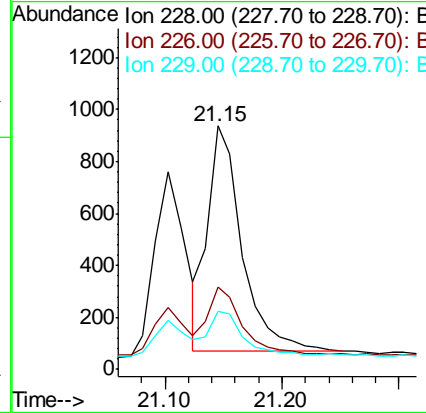
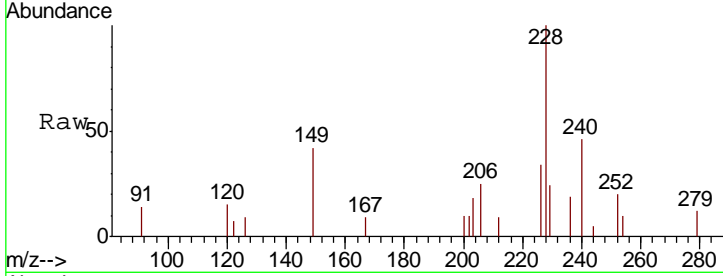




#33
 Chrysene
 Concen: 0.089 ng
 RT: 21.15 min Scan# 2107
 Delta R.T. 0.00 min
 Lab File: BN011103.D
 Acq: 06 Jul 2020 12:24

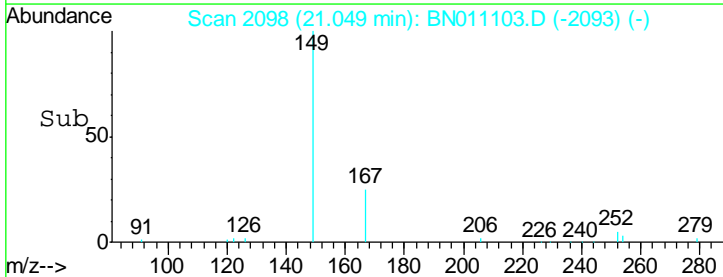
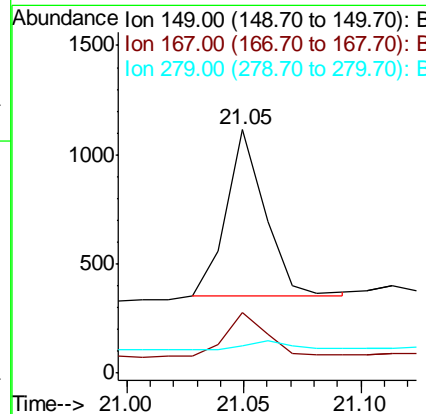
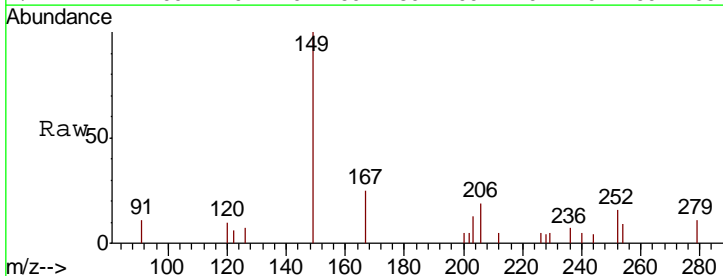
Instrument :
 BNA_N
 ClientSampled :
 MDL-WATER-04

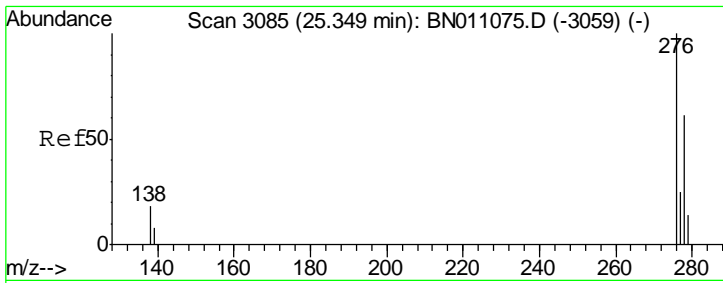
Tgt Ion	Resp	Lower	Upper
228	1762		
226	33.9	24.0	36.0
229	24.0	16.4	24.6



#34
 Bis(2-ethylhexyl)phthalate
 Concen: 0.126 ng
 RT: 21.05 min Scan# 2098
 Delta R.T. 0.00 min
 Lab File: BN011103.D
 Acq: 06 Jul 2020 12:24

Tgt Ion	Resp	Lower	Upper
149	879		
167	27.1	22.2	33.4
279	7.6	4.5	6.7#

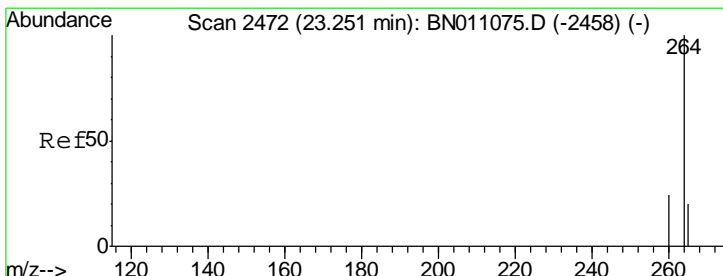
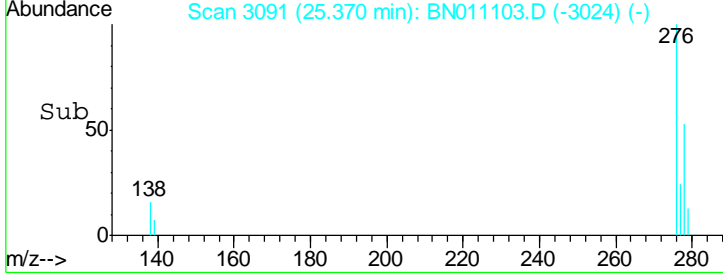
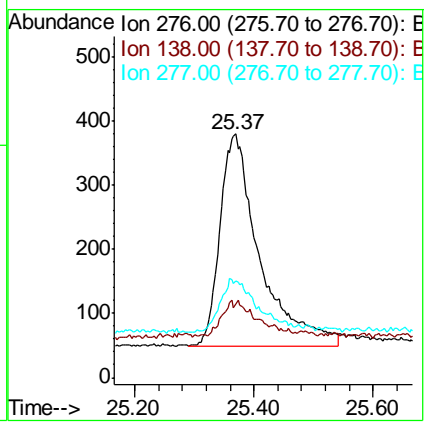
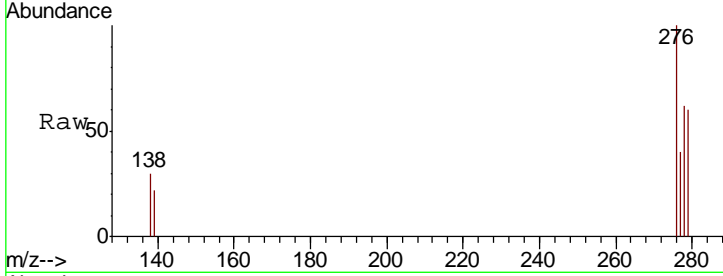




#35
 Indeno(1,2,3-cd)pyrene
 Concen: 0.073 ng
 RT: 25.37 min Scan# 3091
 Delta R.T. 0.03 min
 Lab File: BN011103.D
 Acq: 06 Jul 2020 12:24

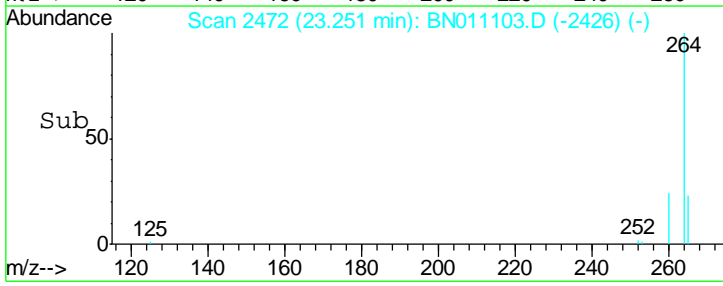
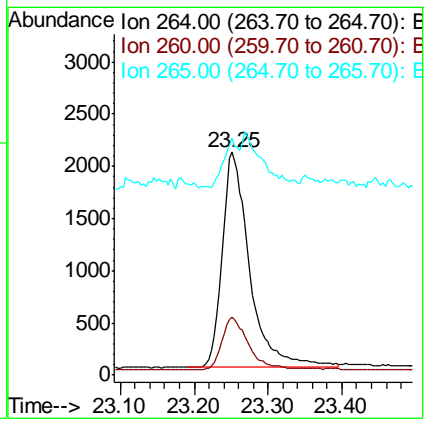
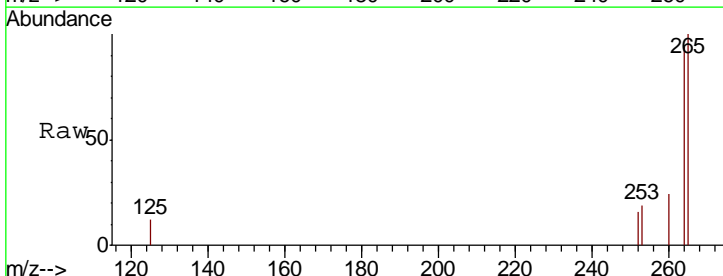
Instrument :
 BNA_N
ClientSampled :
 MDL-WATER-04

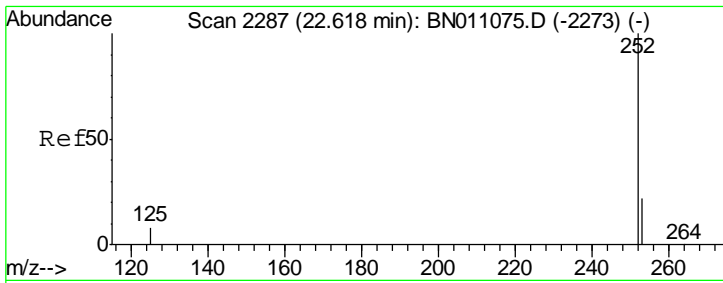
Tgt Ion	Resp	Lower	Upper
276	1522		
138	5.3	15.4	23.0#
277	8.3	19.4	29.0#



#36
 Perylene-d12
 Concen: 0.400 ng
 RT: 23.25 min Scan# 2472
 Delta R.T. 0.01 min
 Lab File: BN011103.D
 Acq: 06 Jul 2020 12:24

Tgt Ion	Resp	Lower	Upper
264	5305		
260	26.0	20.4	30.6
265	106.4	83.0	124.6



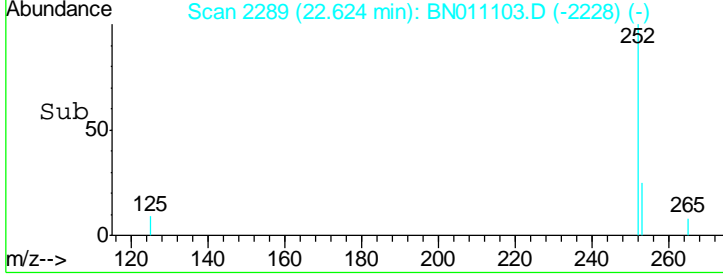
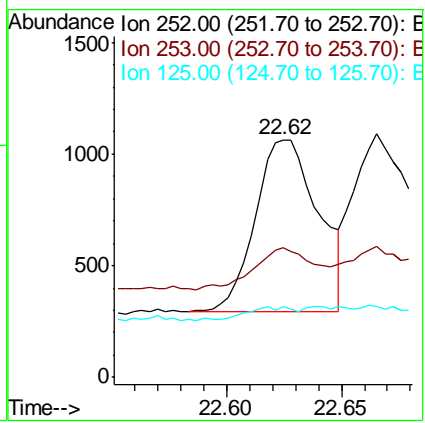
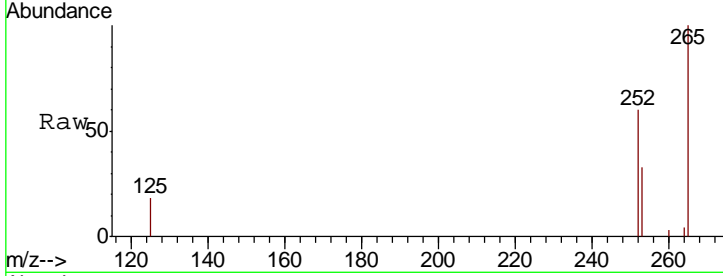


#37
 Benzo(b)fluoranthene
 Concen: 0.069 ng
 RT: 22.62 min Scan# 2289
 Delta R.T. 0.01 min
 Lab File: BN011103.D
 Acq: 06 Jul 2020 12:24

Instrument :
 BNA_N
ClientSampleId :
 MDL-WATER-04

Tgt Ion: 252 Resp: 1473

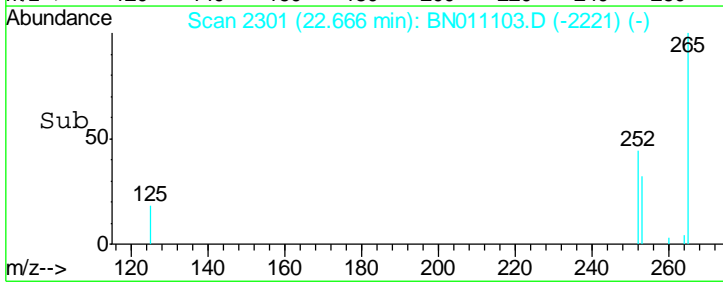
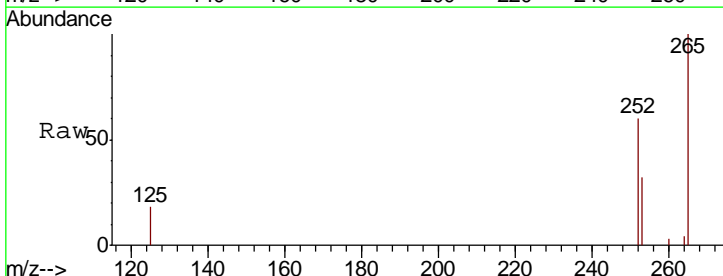
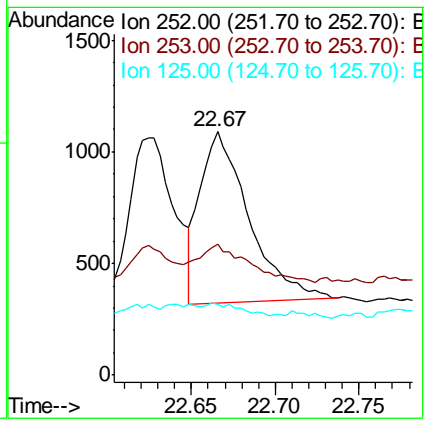
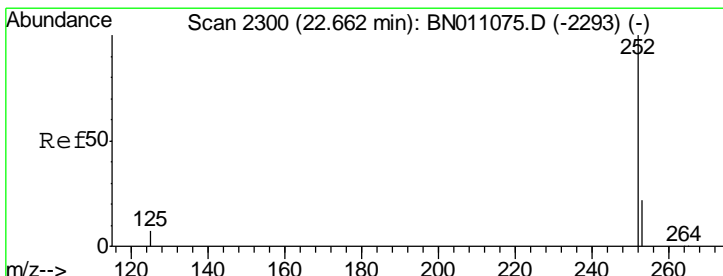
Ion	Ratio	Lower	Upper
252	100		
253	54.5	22.7	34.1#
125	29.7	10.4	15.6#

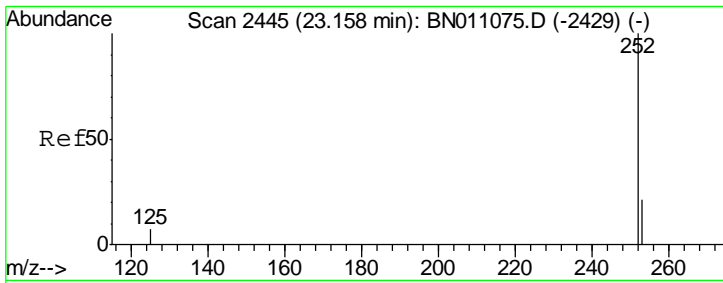


#38
 Benzo(k)fluoranthene
 Concen: 0.068 ng
 RT: 22.67 min Scan# 2301
 Delta R.T. 0.01 min
 Lab File: BN011103.D
 Acq: 06 Jul 2020 12:24

Tgt Ion: 252 Resp: 1559

Ion	Ratio	Lower	Upper
252	100		
253	53.7	22.9	34.3#
125	29.2	10.6	15.8#

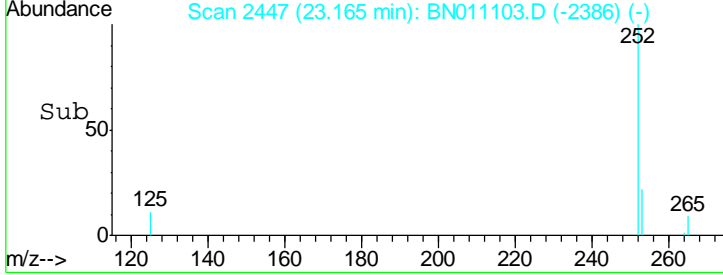
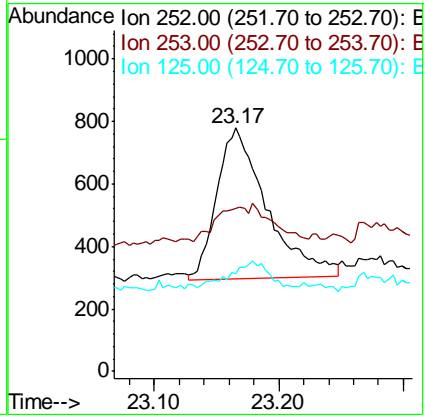
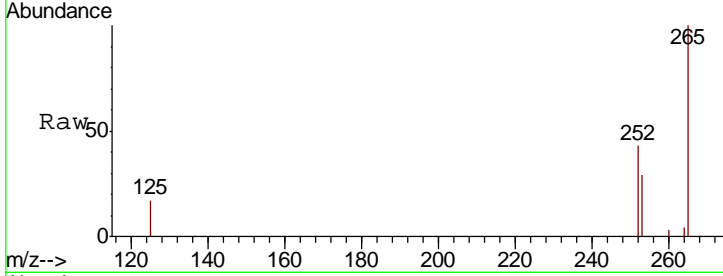




#39
 Benzo(a)pyrene
 Concen: 0.073 ng
 RT: 23.17 min Scan# 2447
 Delta R.T. 0.01 min
 Lab File: BN011103.D
 Acq: 06 Jul 2020 12:24

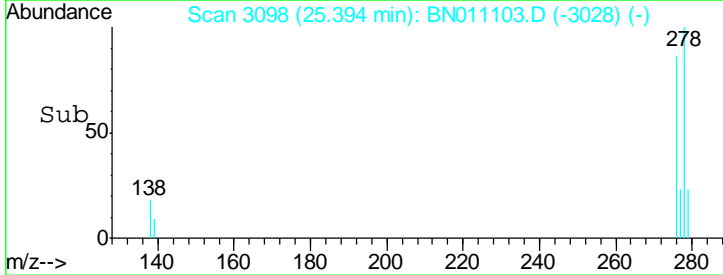
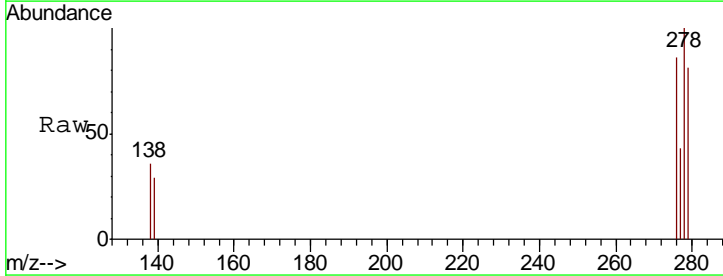
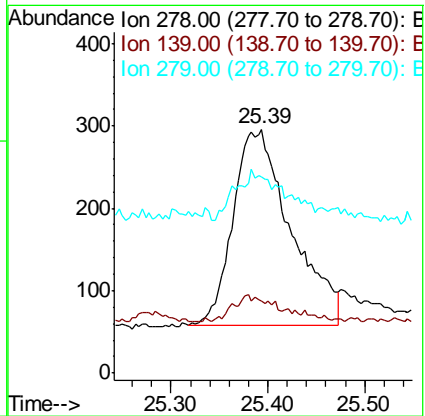
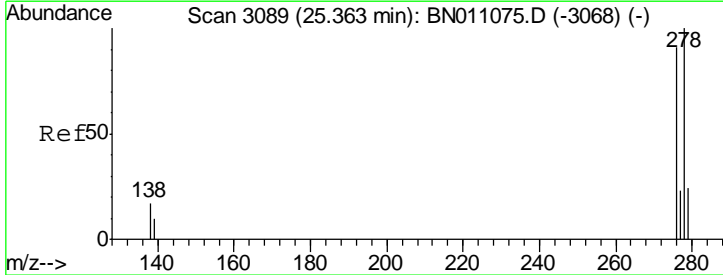
Instrument :
 BNA_N
 ClientSampled :
 MDL-WATER-04

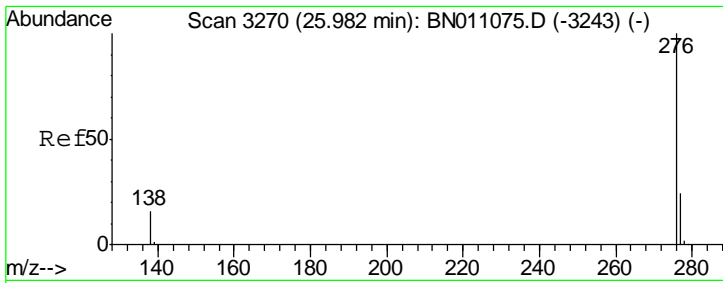
Tgt Ion	Resp	Lower	Upper
252	1339		
253	66.9	25.9	38.9#
125	39.9	12.5	18.7#



#40
 Dibenzo(a,h)anthracene
 Concen: 0.053 ng
 RT: 25.39 min Scan# 3098
 Delta R.T. 0.04 min
 Lab File: BN011103.D
 Acq: 06 Jul 2020 12:24

Tgt Ion	Resp	Lower	Upper
278	989		
278	100		
139	29.4	11.9	17.9#
279	80.7	25.5	38.3#





#41
 Benzo(a,h,i)perylene
 Concen: 0.075 ng
 RT: 25.99 min Scan# 3271
 Delta R.T. 0.02 min
 Lab File: BN011103.D
 Acq: 06 Jul 2020 12:24

Instrument :
 BNA_N
ClientSampled :
 MDL-WATER-04

Tot Ion: 276 Resp: 1560

Ion	Ratio	Lower	Upper
276	100		
277	35.7	21.1	31.7#
138	26.1	15.0	22.6#

