

Data Path : Z:\SVOASRV\HPCHEM1\BNA N\DATA\BN071420\  
 Data File : BN011166.D  
 Acq On : 14 Jul 2020 19:15  
 Operator : CG/JU  
 Sample : SSTDCCC0.4  
 Misc :  
 ALS Vial : 2 Sample Multiplier: 1

Instrument :  
 BNA\_N  
 ClientSampleId :  
 SSTDCCC0.4EC

Manual Integrations  
 APPROVED

mohammad  
 7/15/2020 10:57:40 AM

Quant Time: Jul 14 19:47:01 2020  
 Quant Method : Z:\SVOASRV\HPCHEM1\BNA N\METHODS\8270-SIM-BN071120.M  
 Quant Title : ASP BNA STANDARDS FOR 5 POINT CALIBRATION  
 QLast Update : Tue Jul 14 15:08:13 2020  
 Response via : Initial Calibration

Internal Standards	R.T.	QIon	Response	Conc	Units	Dev(Min)
1) 1,4-Dichlorobenzene-d4	7.50	152	1230	0.40	ng	0.00
7) Naphthalene-d8	10.25	136	4314	0.40	ng	0.00
13) Acenaphthene-d10	14.12	164	2688	0.40	ng	0.00
19) Phenanthrene-d10	16.87	188	6825	0.40	ng	0.00
29) Chrysene-d12	21.09	240	7186	0.40	ng	0.00
36) Perylene-d12	23.22	264	7043	0.40	ng	0.00

## System Monitoring Compounds

4) 2-Fluorophenol	5.15	112	1132	0.37	ng	0.00
5) Phenol-d6	6.70	99	1415	0.41	ng	0.00
8) Nitrobenzene-d5	8.64	82	1481	0.39	ng	0.00
11) 2-Methylnaphthalene-d10	11.85	152	2958	0.42	ng	0.00
14) 2,4,6-Tribromophenol	15.63	330	523	0.44	ng	0.00
15) 2-Fluorobiphenyl	12.75	172	4628	0.37	ng	0.00
27) Fluoranthene-d10	18.92	212	8370	0.39	ng	0.00
31) Terphenyl-d14	19.54	244	7264	0.39	ng	0.00

## Target Compounds

Target Compounds	R.T.	QIon	Response	Conc	Units	Qvalue
2) 1,4-Dioxane	3.19	88	593m	0.337	ng	
3) n-Nitrosodimethylamine	3.53	42	357	0.403	ng	# 91
6) bis(2-Chloroethyl)ether	6.95	93	1156	0.368	ng	98
9) Naphthalene	10.29	128	4742	0.370	ng	99
10) Hexachlorobutadiene	10.59	225	1201	0.378	ng	# 97
12) 2-Methylnaphthalene	11.92	142	3349	0.415	ng	96
16) Acenaphthylene	13.84	152	4989	0.365	ng	100
17) Acenaphthene	14.18	154	3451	0.378	ng	99
18) Fluorene	15.18	166	4664	0.398	ng	100
20) 4,6-Dinitro-2-methylphenol	15.30	198	376	0.428	ng	# 86
21) 4-Bromophenyl-phenylether	16.08	248	2031	0.438	ng	# 91
22) Hexachlorobenzene	16.19	284	1735	0.321	ng	97
23) Atrazine	16.37	200	1248	0.384	ng	98
24) Pentachlorophenol	16.54	266	587	0.366	ng	95
25) Phenanthrene	16.92	178	8103	0.370	ng	100
26) Anthracene	17.02	178	6643	0.365	ng	99
28) Fluoranthene	18.95	202	10148	0.386	ng	99
30) Pyrene	19.32	202	10190	0.371	ng	100
32) Benzo(a)anthracene	21.08	228	8607	0.370	ng	98
33) Chrysene	21.13	228	10479	0.368	ng	99
34) Bis(2-ethylhexyl)phthalate	21.04	149	3976	0.415	ng	97
35) Indeno(1,2,3-cd)pyrene	25.31	276	11109	0.371	ng	100
37) Benzo(b)fluoranthene	22.60	252	9704	0.343	ng	96
38) Benzo(k)fluoranthene	22.64	252	11574	0.362	ng	# 96
39) Benzo(a)pyrene	23.13	252	8898	0.349	ng	96
40) Dibenzo(a,h)anthracene	25.33	278	8718	0.323	ng	96
41) Benzo(g,h,i)perylene	25.94	276	9175	0.310	ng	99

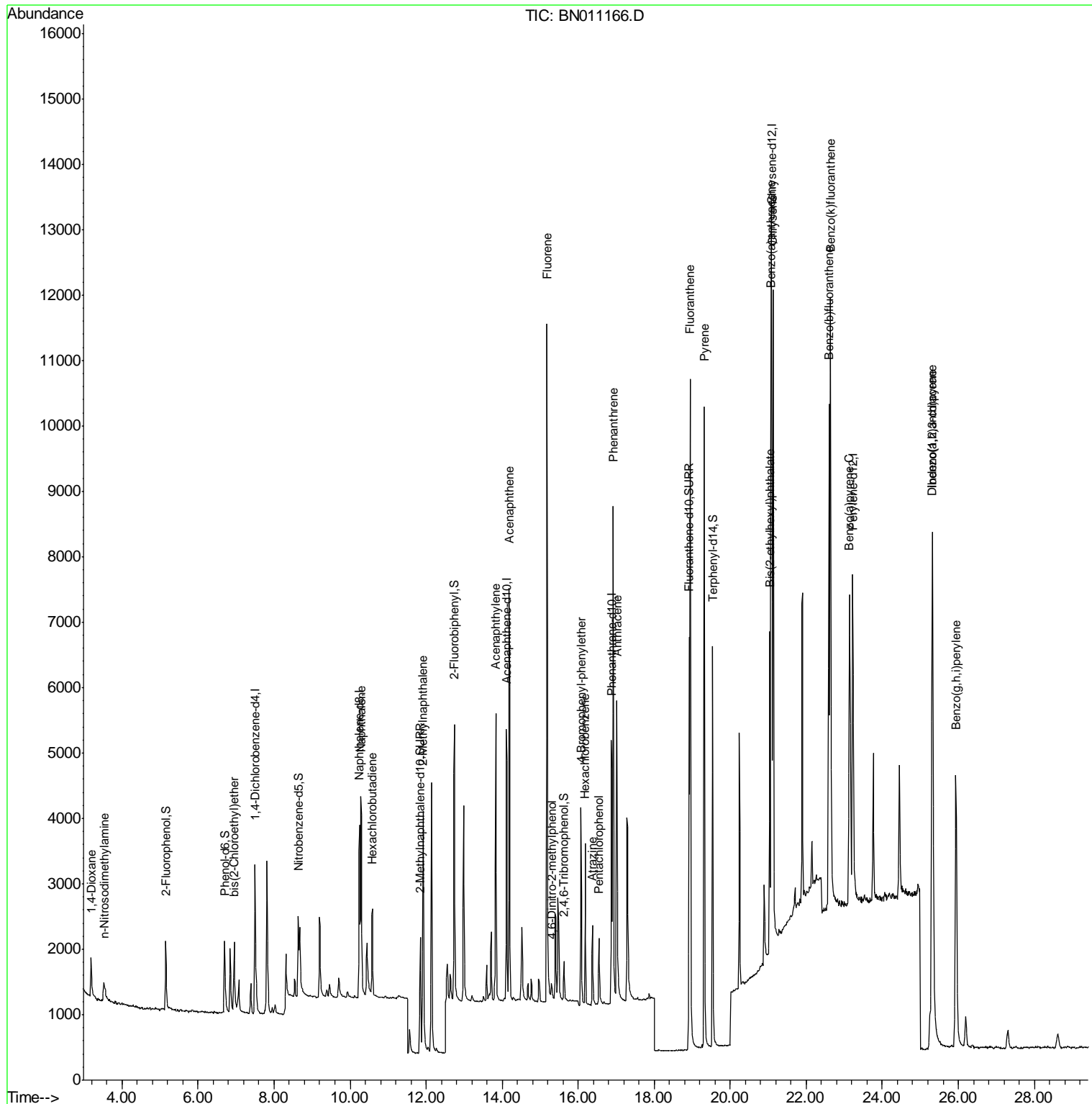
(#) = qualifier out of range (m) = manual integration (+) = signals summed

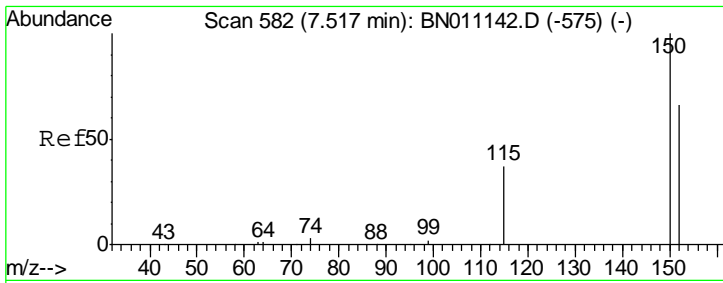
Data Path : Z:\SVOASRV\HPCHEM1\BNA N\DATA\BN071420\  
 Data File : BN011166.D  
 Acq On : 14 Jul 2020 19:15  
 Operator : CG/JU  
 Sample : SSTDCCC0.4  
 Misc :  
 ALS Vial : 2 Sample Multiplier: 1

Instrument :  
 BNA\_N  
 Client Sampled :  
 SSTDCCC0.4EC

Manual Integrations  
 APPROVED  
 mohammad  
 7/15/2020 10:57:40 AM

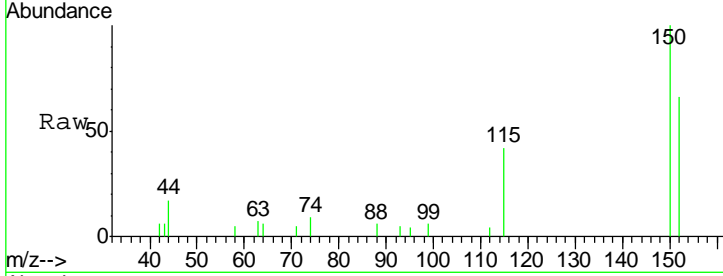
Quant Time: Jul 14 19:47:01 2020  
 Quant Method : Z:\SVOASRV\HPCHEM1\BNA N\METHODS\8270-SIM-BN071120.M  
 Quant Title : ASP BNA STANDARDS FOR 5 POINT CALIBRATION  
 QLast Update : Tue Jul 14 15:08:13 2020  
 Response via : Initial Calibration





#1  
 1,4-Dichlorobenzene-d4  
 Concen: 0.400 ng  
 RT: 7.50 min Scan# 561  
 Delta R.T. -0.00 min  
 Lab File: BN011166.D  
 Acq: 14 Jul 2020 19:15

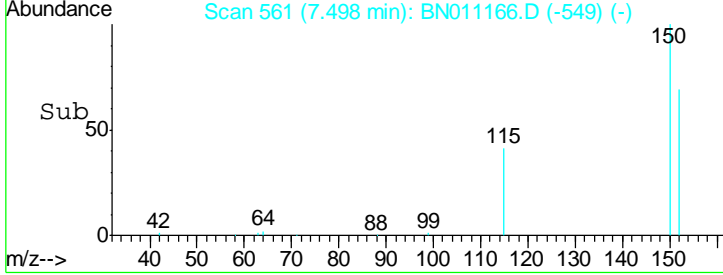
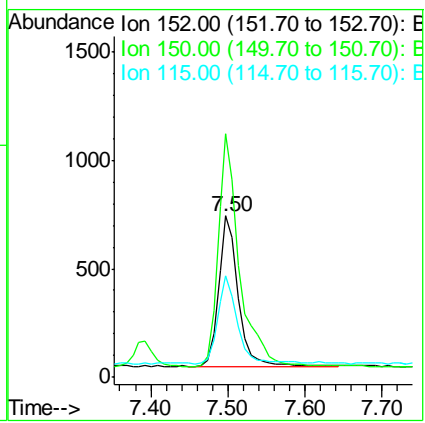
**Instrument :**  
 BNA\_N  
**ClientSampled :**  
 SSTDCCC0.4EC



Tgt Ion: 152 Resp: 1230

Ion	Ratio	Lower	Upper
152	100		
150	151.0	119.4	179.0
115	63.3	48.3	72.5

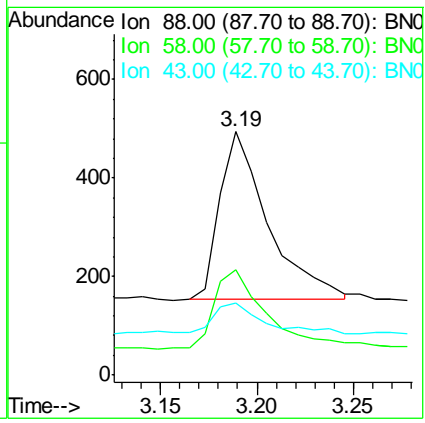
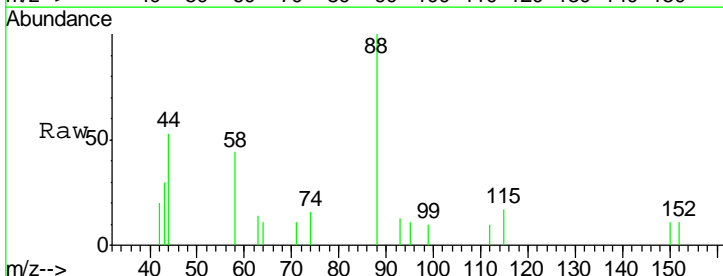
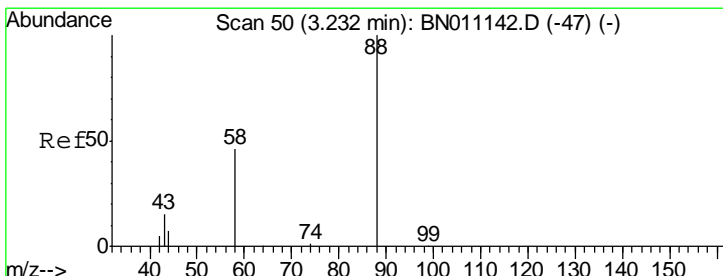
**Manual Integrations**  
**APPROVED**  
 mohammad  
 7/15/2020 10:57:40 AM

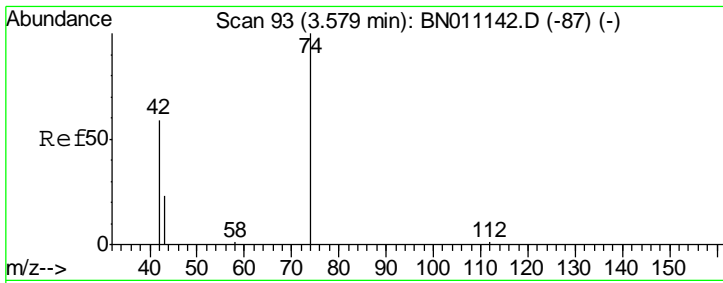


#2  
 1,4-Dioxane  
 Concen: 0.337 ng m  
 RT: 3.19 min Scan# 26  
 Delta R.T. -0.04 min  
 Lab File: BN011166.D  
 Acq: 14 Jul 2020 19:15

Tgt Ion: 88 Resp: 593

Ion	Ratio	Lower	Upper
88	100		
58	0.0	36.5	54.7#
43	0.0	14.3	21.5#





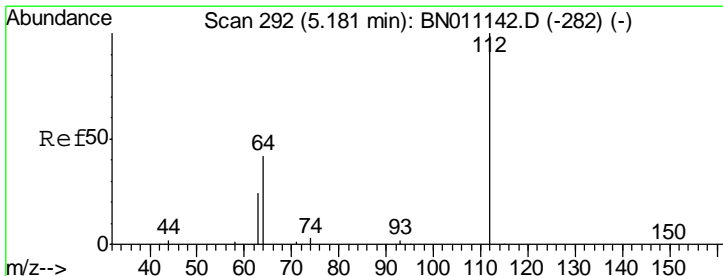
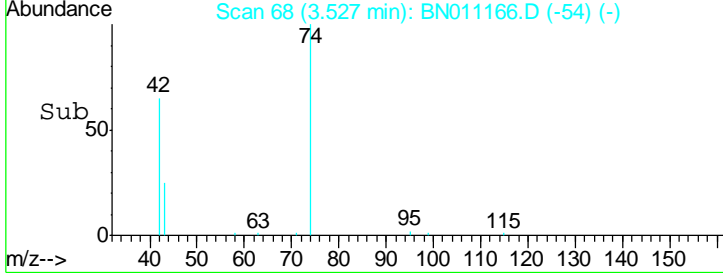
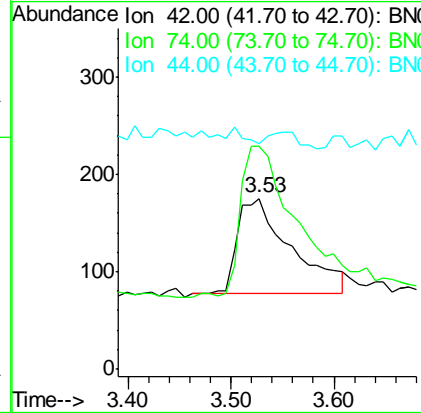
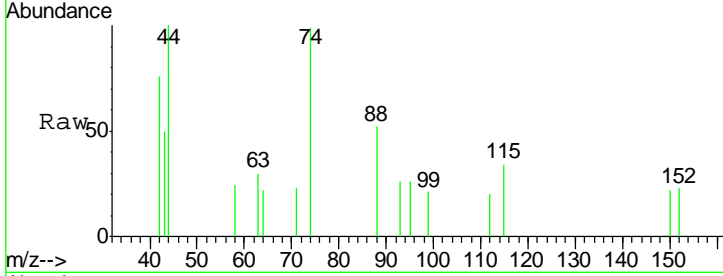
#3  
 n-Nitrosodimethylamine  
 Concen: 0.403 ng  
 RT: 3.53 min Scan# 68  
 Delta R.T. 0.01 min  
 Lab File: BN011166.D  
 Acq: 14 Jul 2020 19:15

**Instrument :**  
 BNA\_N  
**ClientSampled :**  
 SSTDCCC0.4EC

Tgt Ion	Ratio	Lower	Upper
42	100		
74	164.4	140.9	211.3
44	0.0	7.6	11.4#

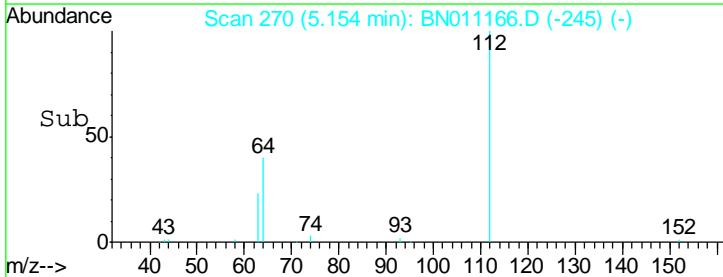
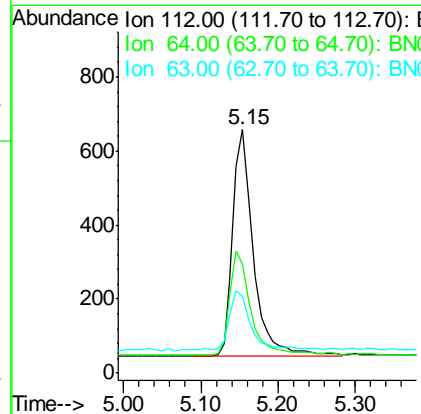
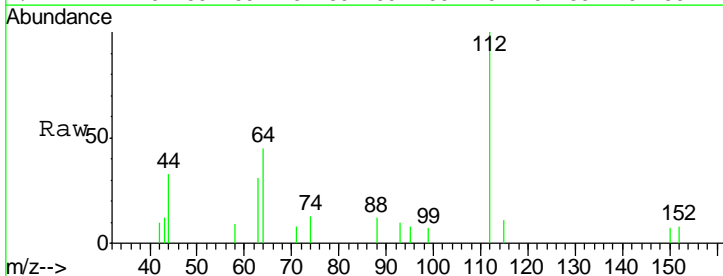
**Manual Integrations**  
**APPROVED**

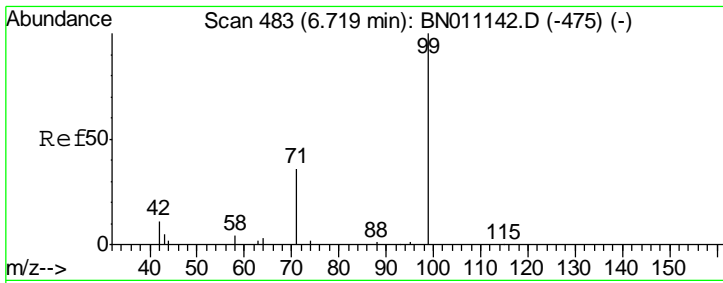
mohammad  
 7/15/2020 10:57:40 AM



#4  
 2-Fluorophenol  
 Concen: 0.373 ng  
 RT: 5.15 min Scan# 270  
 Delta R.T. 0.00 min  
 Lab File: BN011166.D  
 Acq: 14 Jul 2020 19:15

Tgt Ion	Ratio	Lower	Upper
112	100		
64	46.2	36.7	55.1
63	26.8	20.4	30.6





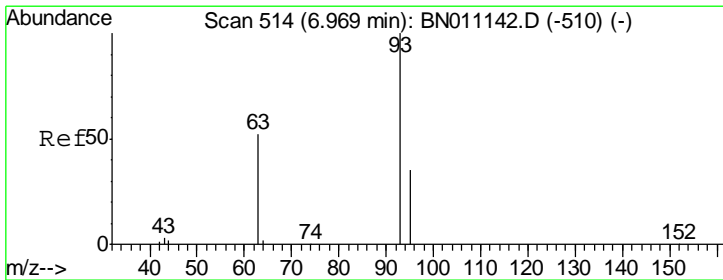
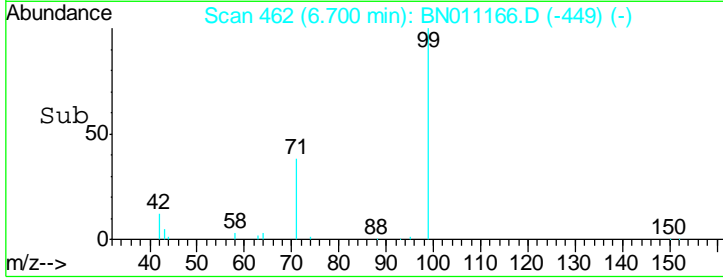
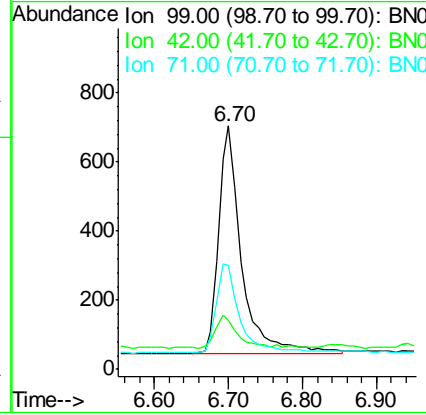
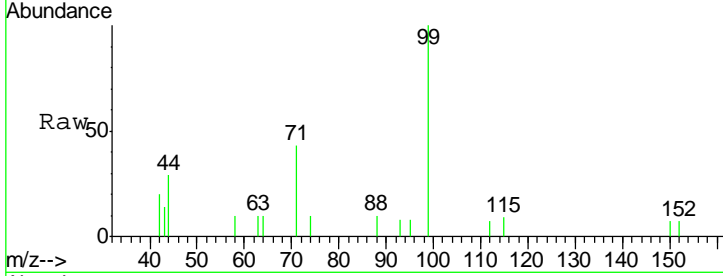
#5  
 Phenol-d6  
 Concen: 0.413 ng  
 RT: 6.70 min Scan# 462  
 Delta R.T. 0.00 min  
 Lab File: BN011166.D  
 Acq: 14 Jul 2020 19:15

**Instrument :**  
 BNA\_N  
**ClientSampled :**  
 SSTDCCC0.4EC

Tgt Ion	Resp	Lower	Upper
99	1415		
99	100		
42	13.6	10.8	16.2
71	39.2	31.3	46.9

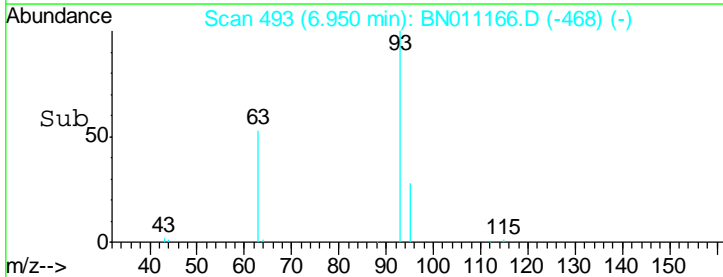
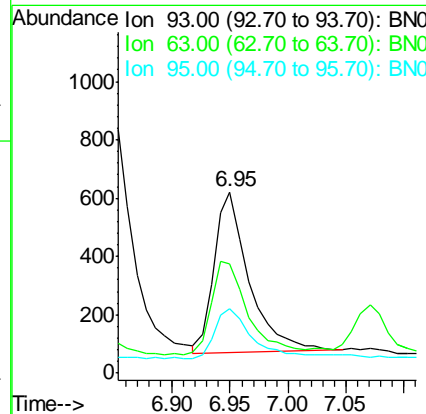
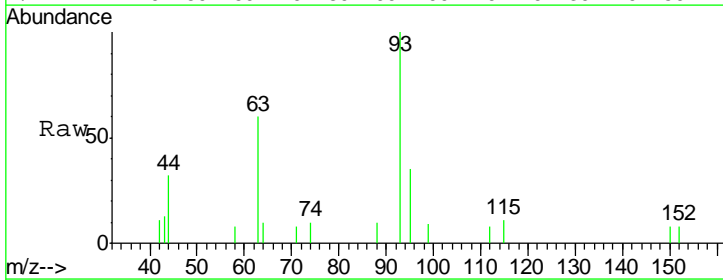
**Manual Integrations**  
**APPROVED**

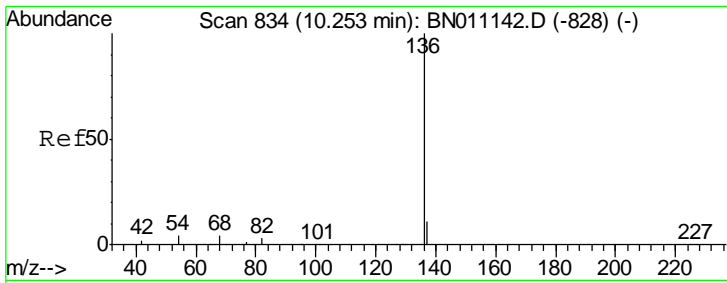
mohammad  
 7/15/2020 10:57:40 AM



#6  
 bis(2-Chloroethyl)ether  
 Concen: 0.368 ng  
 RT: 6.95 min Scan# 493  
 Delta R.T. 0.00 min  
 Lab File: BN011166.D  
 Acq: 14 Jul 2020 19:15

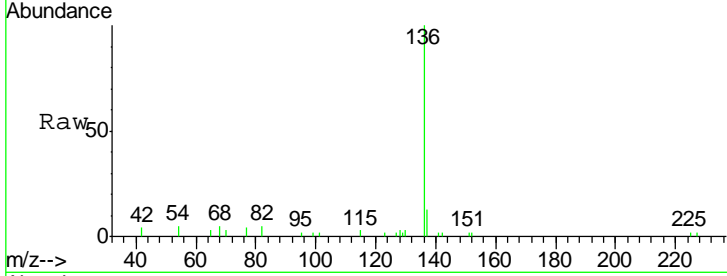
Tgt Ion	Resp	Lower	Upper
93	1156		
93	100		
63	60.1	47.4	71.0
95	32.8	28.1	42.1





#7  
 Naphthalene-d8  
 Concen: 0.400 ng  
 RT: 10.25 min Scan# 815  
 Delta R.T. 0.01 min  
 Lab File: BN011166.D  
 Acq: 14 Jul 2020 19:15

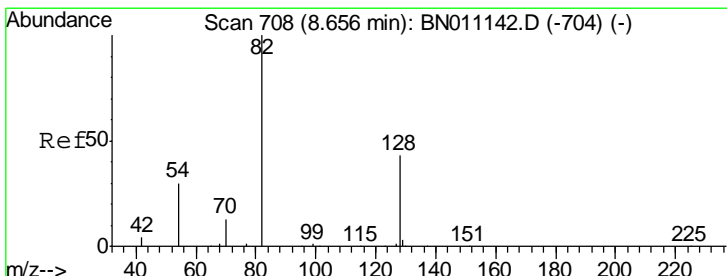
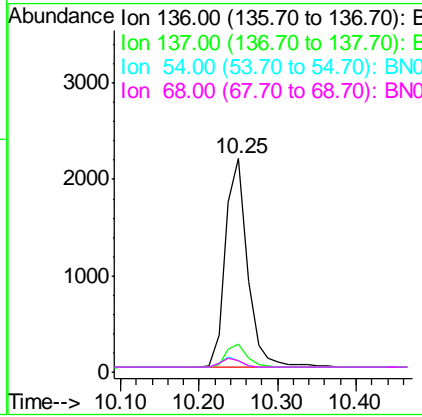
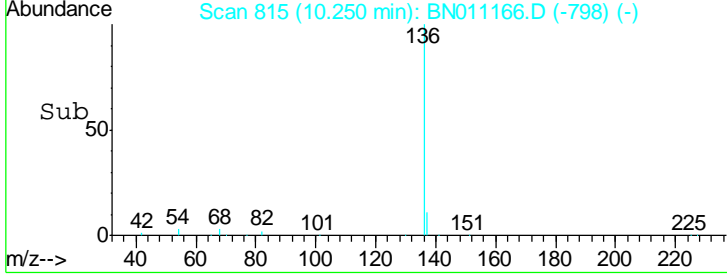
**Instrument :**  
 BNA\_N  
**ClientSampled :**  
 SSTDCCC0.4EC



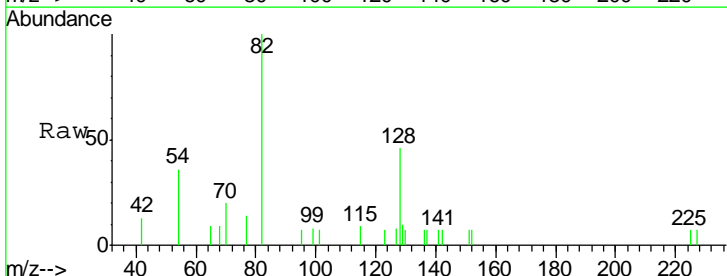
Tgt Ion: 136 Resp: 4314

Ion	Ratio	Lower	Upper
136	100		
137	13.3	10.3	15.5
54	5.1	4.9	7.3
68	5.4	4.9	7.3

**Manual Integrations**  
**APPROVED**  
 mohammad  
 7/15/2020 10:57:40 AM

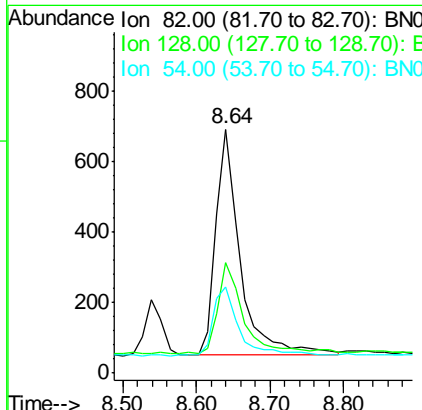
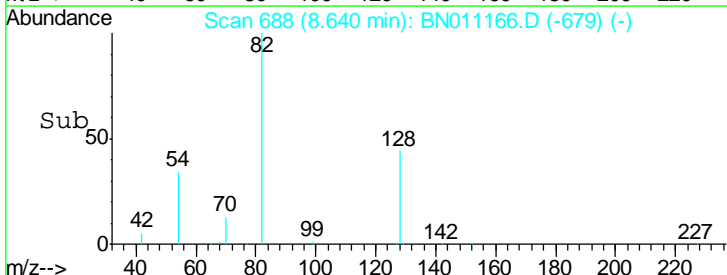


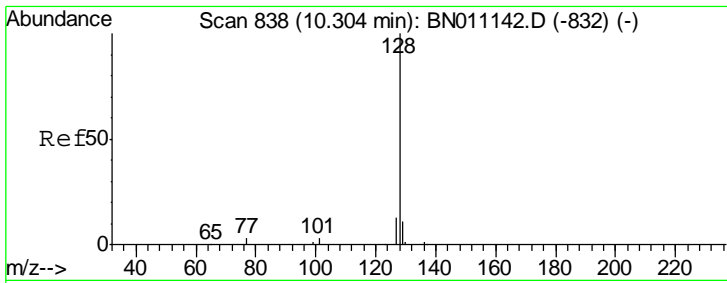
#8  
 Nitrobenzene-d5  
 Concen: 0.387 ng  
 RT: 8.64 min Scan# 688  
 Delta R.T. 0.01 min  
 Lab File: BN011166.D  
 Acq: 14 Jul 2020 19:15



Tgt Ion: 82 Resp: 1481

Ion	Ratio	Lower	Upper
82	100		
128	45.6	38.1	57.1
54	35.6	27.1	40.7





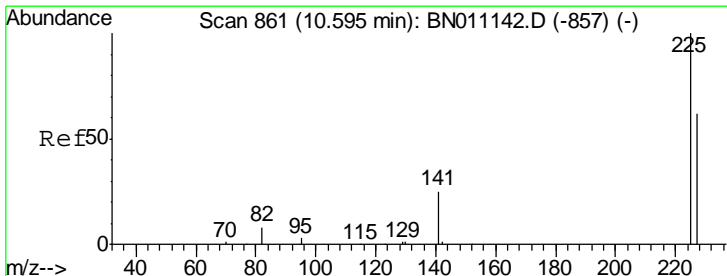
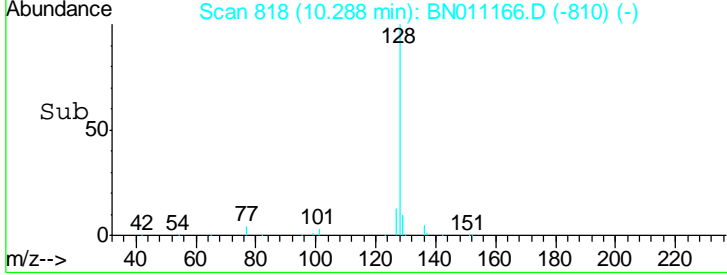
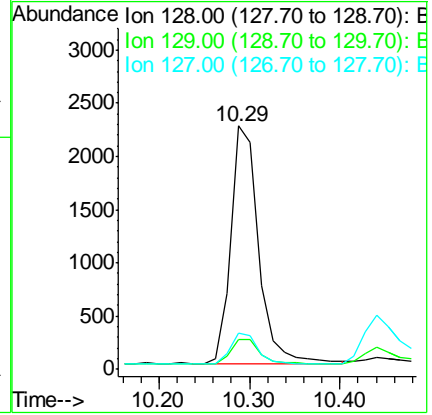
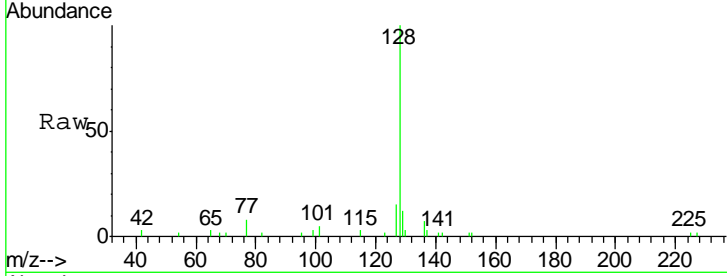
#9  
Naphthalene  
Concen: 0.370 ng  
RT: 10.29 min Scan# 818  
Delta R.T. -0.00 min  
Lab File: BN011166.D  
Acq: 14 Jul 2020 19:15

Instrument :  
BNA\_N  
ClientSampled :  
SSTDCCC0.4EC

Tgt Ion	Ratio	Lower	Upper
128	100		
129	12.4	9.8	14.6
127	15.0	11.8	17.6

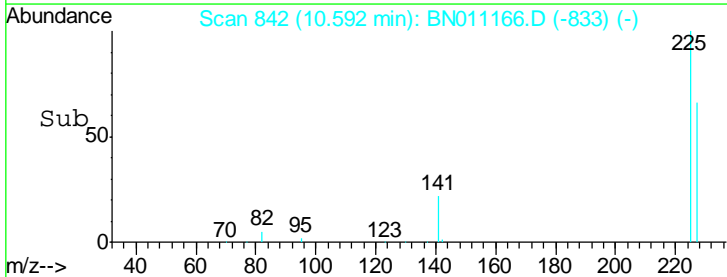
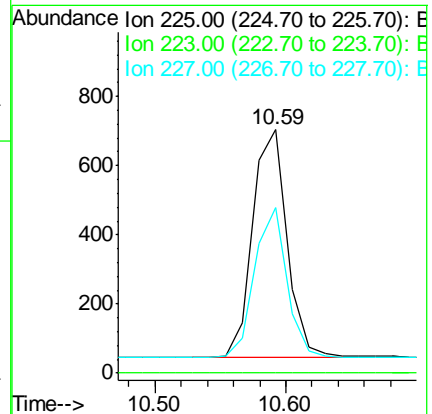
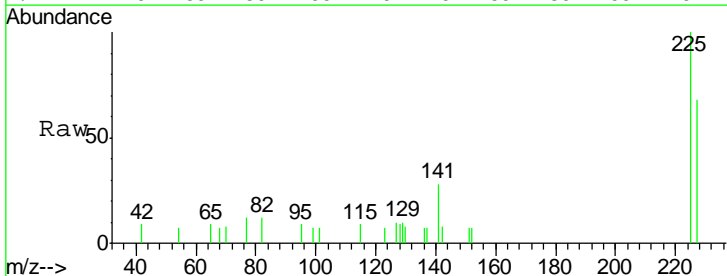
Manual Integrations  
APPROVED

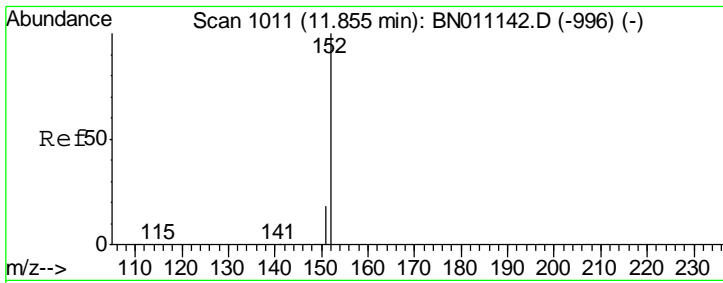
mohammad  
7/15/2020 10:57:40 AM



#10  
Hexachlorobutadiene  
Concen: 0.378 ng  
RT: 10.59 min Scan# 842  
Delta R.T. 0.01 min  
Lab File: BN011166.D  
Acq: 14 Jul 2020 19:15

Tgt Ion	Ratio	Lower	Upper
225	100		
223	0.0	0.0	0.0
227	61.7	51.2	76.8





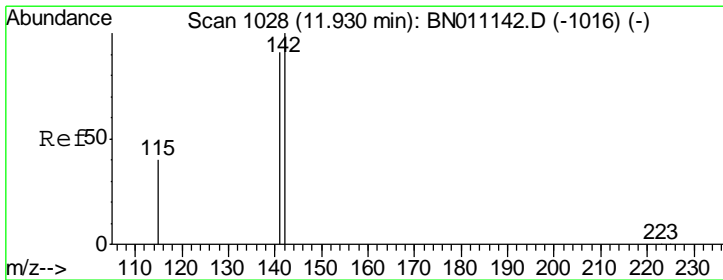
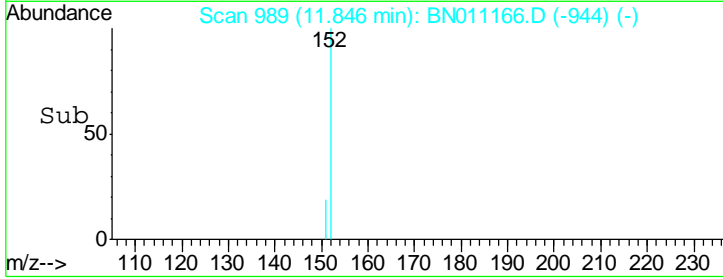
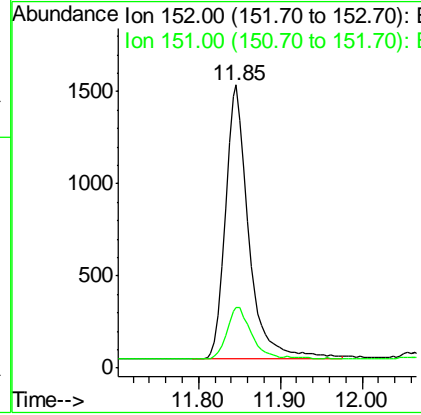
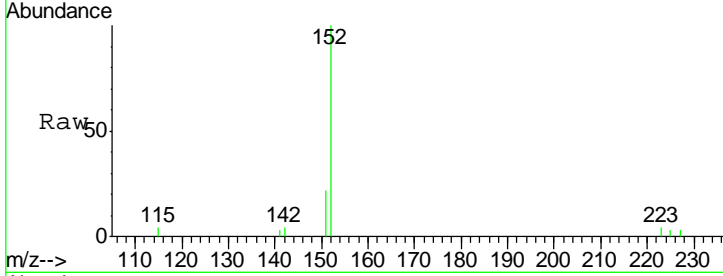
#11  
 2-Methylnaphthalene-d10  
 Concen: 0.423 ng  
 RT: 11.85 min Scan# 989  
 Delta R.T. 0.00 min  
 Lab File: BN011166.D  
 Acq: 14 Jul 2020 19:15

**Instrument :**  
 BNA\_N  
**ClientSampled :**  
 SSTDCCC0.4EC

Tgt Ion	Resp	Lower	Upper
152	100		
151	20.6	16.5	24.7

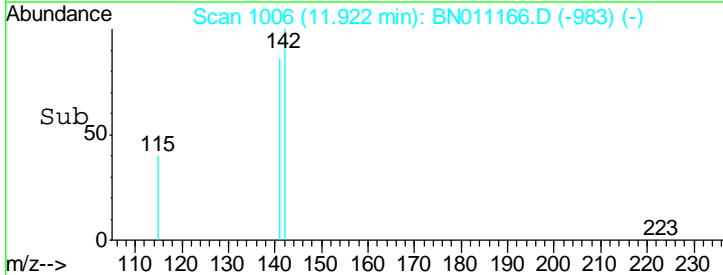
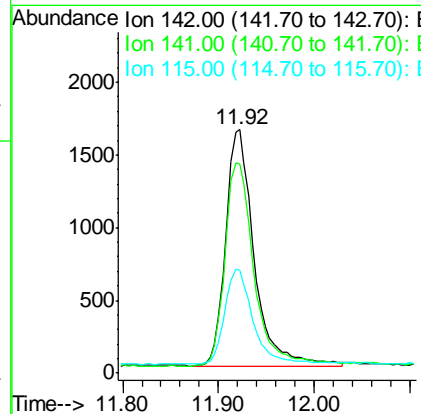
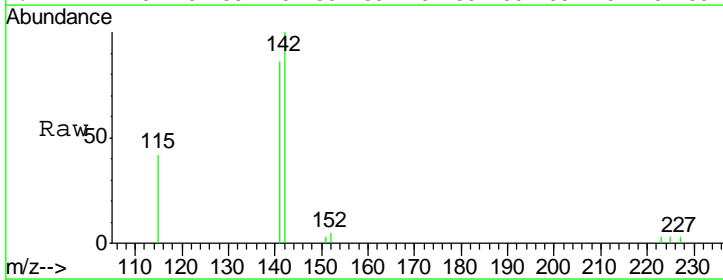
**Manual Integrations**  
**APPROVED**

mohammad  
 7/15/2020 10:57:40 AM

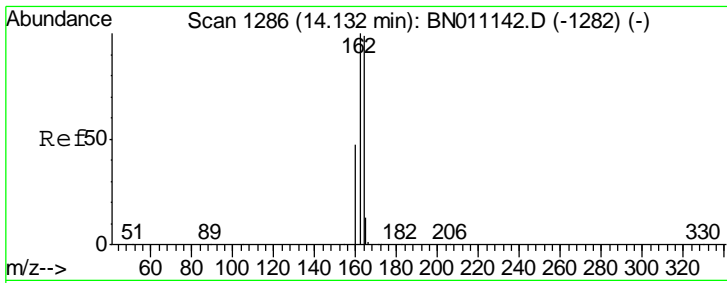


#12  
 2-Methylnaphthalene  
 Concen: 0.415 ng  
 RT: 11.92 min Scan# 1006  
 Delta R.T. 0.00 min  
 Lab File: BN011166.D  
 Acq: 14 Jul 2020 19:15

Tgt Ion	Resp	Lower	Upper
142	100		
141	86.0	72.7	109.1
115	42.3	33.8	50.6







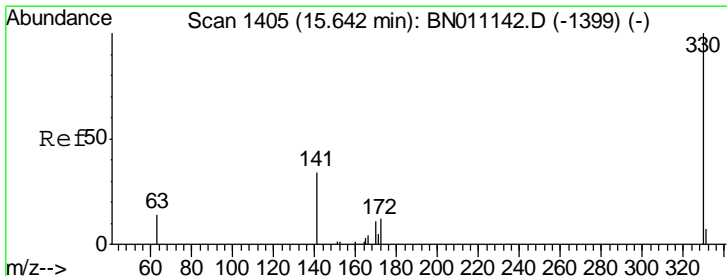
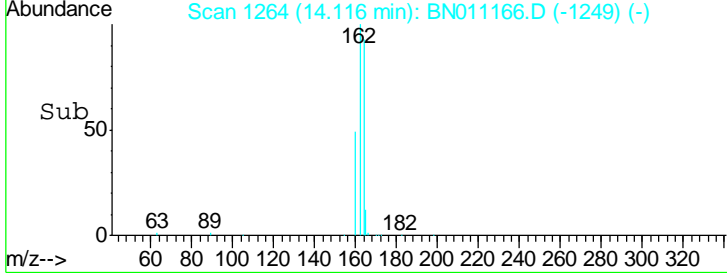
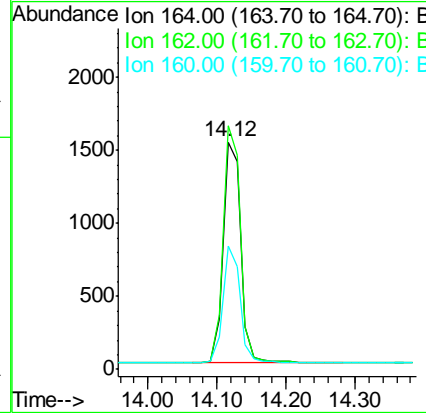
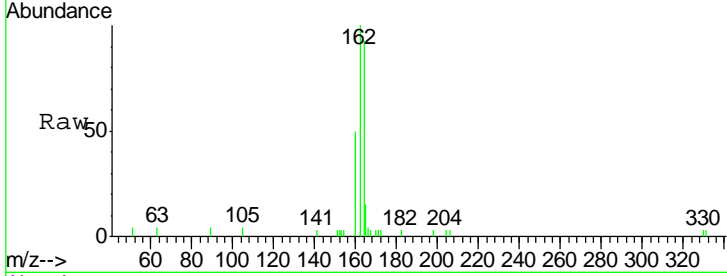
#13  
 Acenaphthene-d10  
 Concen: 0.400 ng  
 RT: 14.12 min Scan# 1264  
 Delta R.T. -0.00 min  
 Lab File: BN011166.D  
 Acq: 14 Jul 2020 19:15

**Instrument :**  
 BNA\_N  
**ClientSampled :**  
 SSTDCCC0.4EC

Tgt Ion	Resp	Lower	Upper
164	100		
162	107.1	81.0	121.4
160	54.1	39.0	58.6

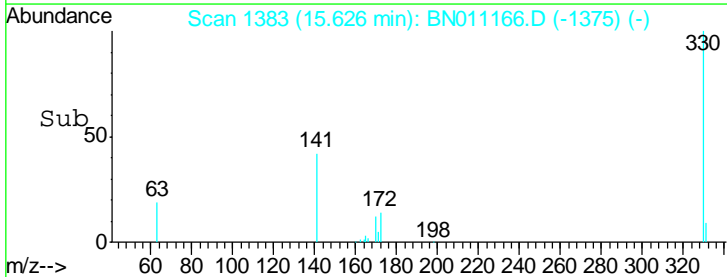
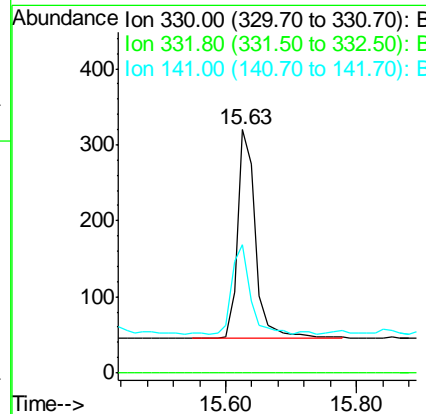
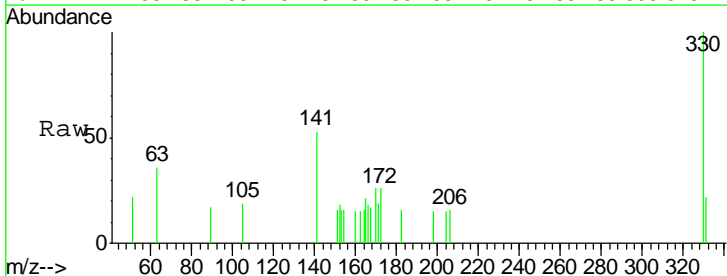
**Manual Integrations**  
**APPROVED**

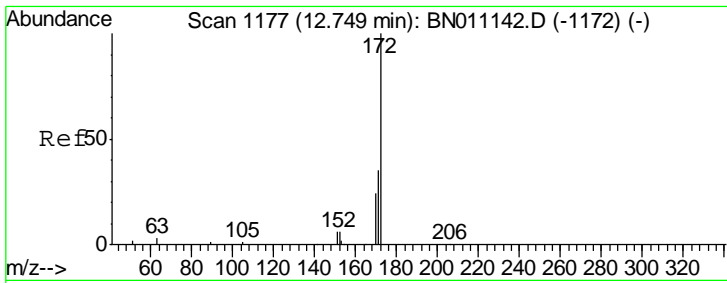
mohammad  
 7/15/2020 10:57:40 AM



#14  
 2,4,6-Tribromophenol  
 Concen: 0.438 ng  
 RT: 15.63 min Scan# 1383  
 Delta R.T. -0.00 min  
 Lab File: BN011166.D  
 Acq: 14 Jul 2020 19:15

Tgt Ion	Resp	Lower	Upper
330	100		
332	0.0	0.0	0.0
141	44.6	31.5	47.3





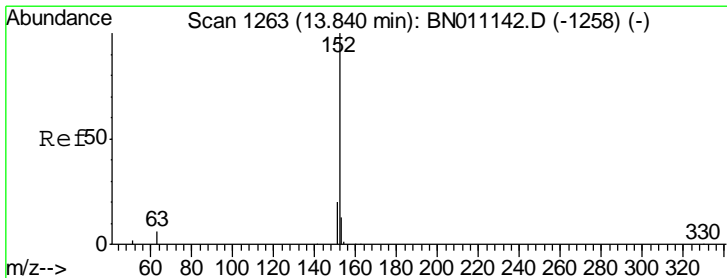
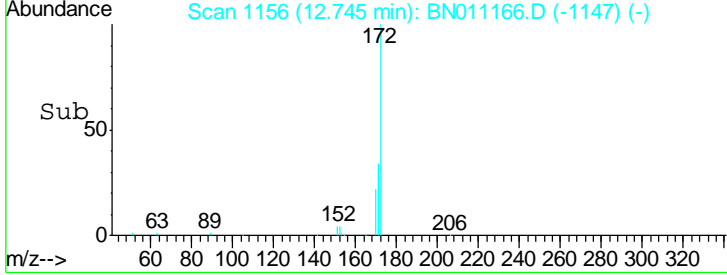
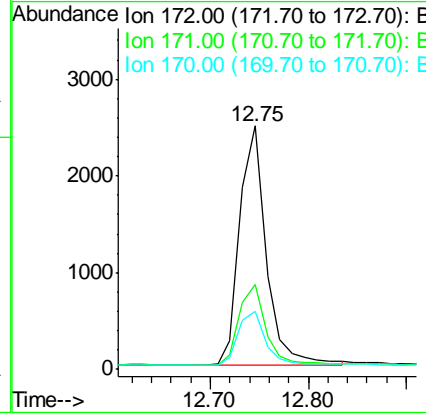
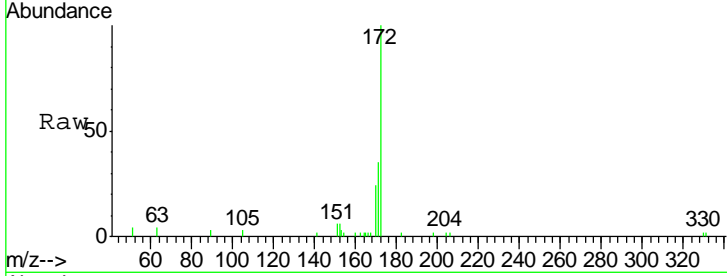
#15  
 2-Fluorobiphenyl  
 Concen: 0.368 ng  
 RT: 12.75 min Scan# 1156  
 Delta R.T. 0.01 min  
 Lab File: BN011166.D  
 Acq: 14 Jul 2020 19:15

**Instrument :**  
 BNA\_N  
**ClientSampled :**  
 SSTDCCC0.4EC

Tgt Ion	Resp	Lower	Upper
172	100		
171	35.1	29.0	43.6
170	23.9	20.3	30.5

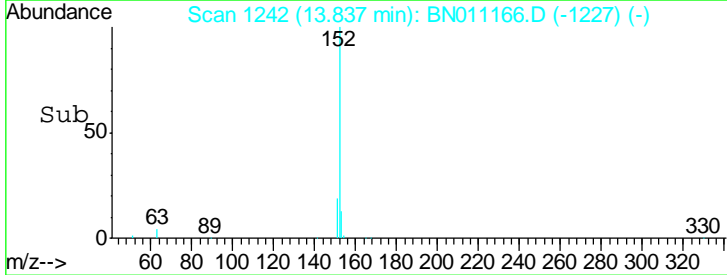
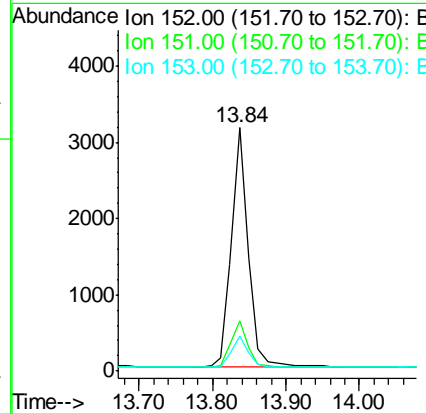
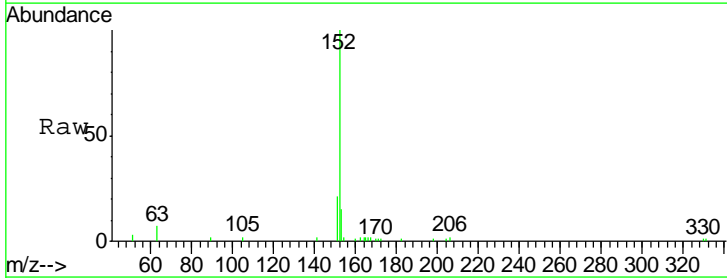
**Manual Integrations**  
**APPROVED**

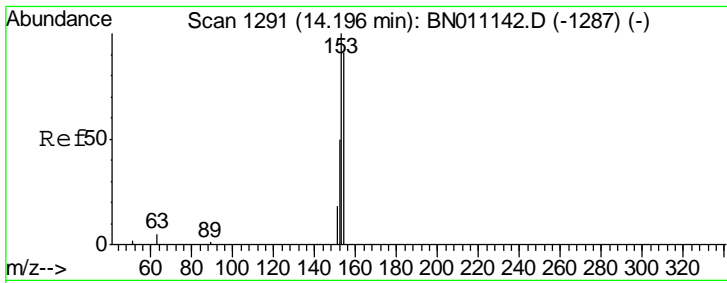
mohammad  
 7/15/2020 10:57:40 AM



#16  
 Acenaphthylene  
 Concen: 0.365 ng  
 RT: 13.84 min Scan# 1242  
 Delta R.T. -0.00 min  
 Lab File: BN011166.D  
 Acq: 14 Jul 2020 19:15

Tgt Ion	Resp	Lower	Upper
152	100		
151	19.6	15.7	23.5
153	13.3	10.6	15.8





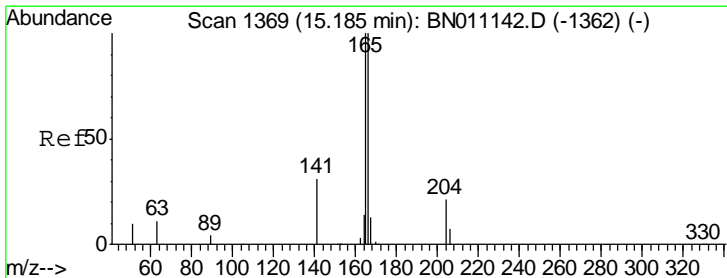
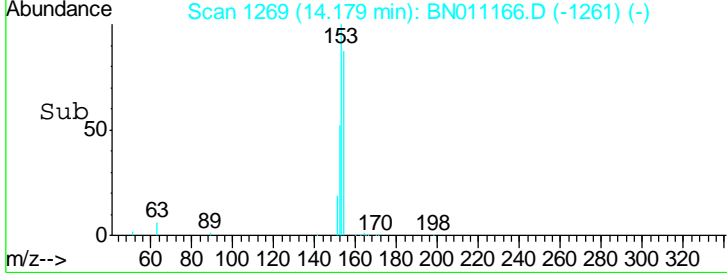
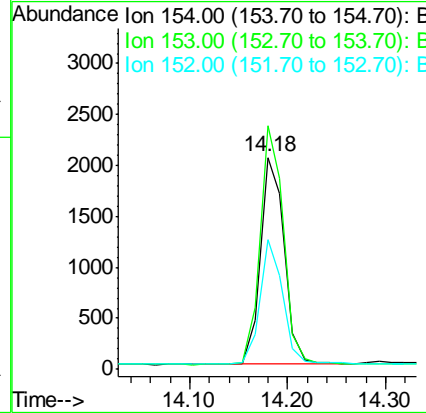
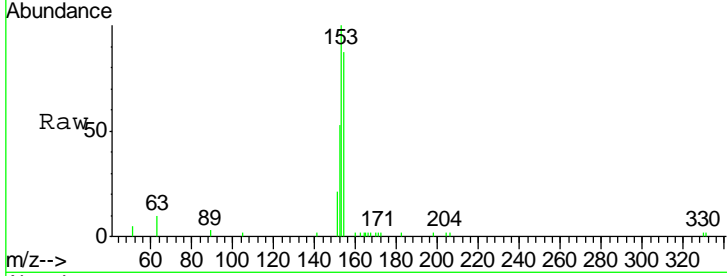
#17  
 Acenaphthene  
 Concen: 0.378 ng  
 RT: 14.18 min Scan# 1269  
 Delta R.T. -0.00 min  
 Lab File: BN011166.D  
 Acq: 14 Jul 2020 19:15

Instrument :  
 BNA\_N  
 ClientSampled :  
 SSTDCCC0.4EC

Tgt Ion	Resp	Lower	Upper
154	100		
153	114.7	91.3	136.9
152	57.9	46.6	69.8

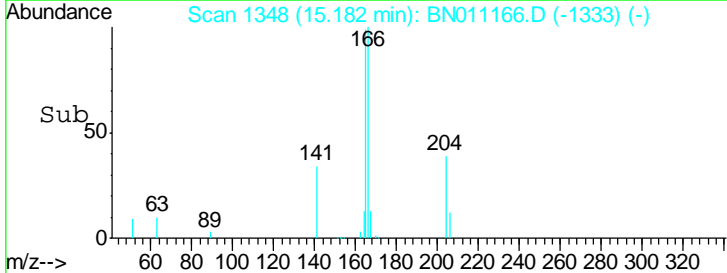
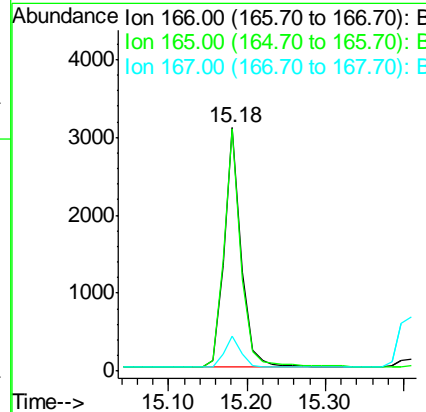
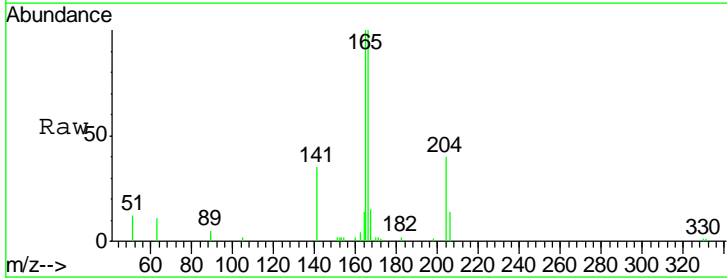
Manual Integrations  
 APPROVED

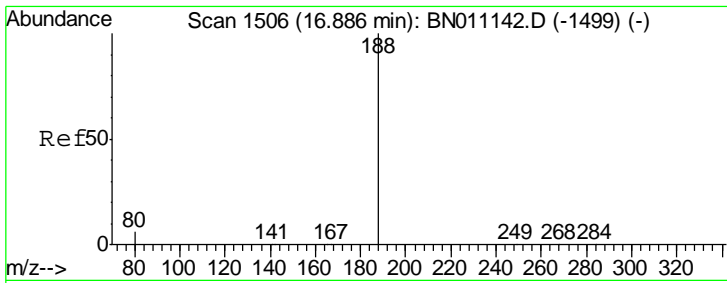
mohammad  
 7/15/2020 10:57:40 AM



#18  
 Fluorene  
 Concen: 0.398 ng  
 RT: 15.18 min Scan# 1348  
 Delta R.T. -0.00 min  
 Lab File: BN011166.D  
 Acq: 14 Jul 2020 19:15

Tgt Ion	Resp	Lower	Upper
166	100		
165	99.2	79.1	118.7
167	13.5	10.5	15.7





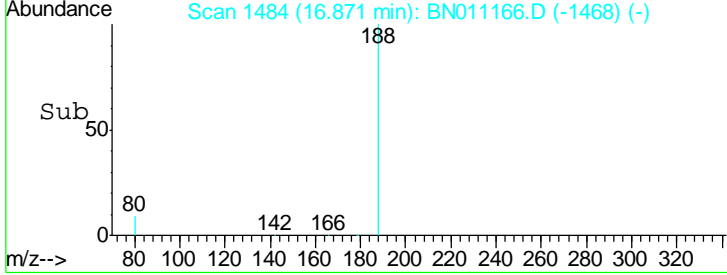
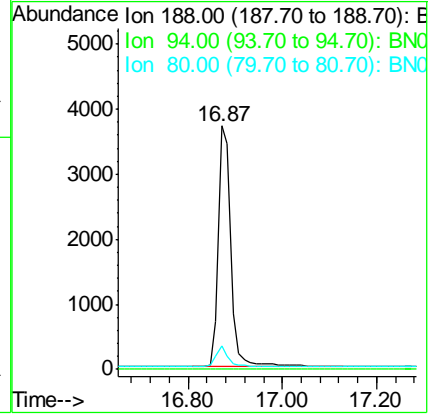
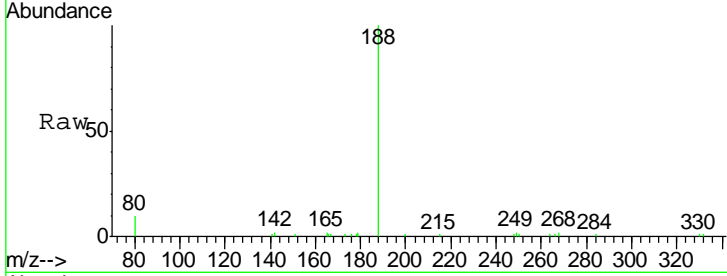
#19  
 Phenanthrene-d10  
 Concen: 0.400 ng  
 RT: 16.87 min Scan# 1484  
 Delta R.T. -0.00 min  
 Lab File: BN011166.D  
 Acq: 14 Jul 2020 19:15

**Instrument :**  
 BNA\_N  
**ClientSampled :**  
 SSTDCCC0.4EC

Tgt Ion	Ratio	Lower	Upper
188	100		
94	0.0	0.0	0.0
80	9.9	6.3	9.5#

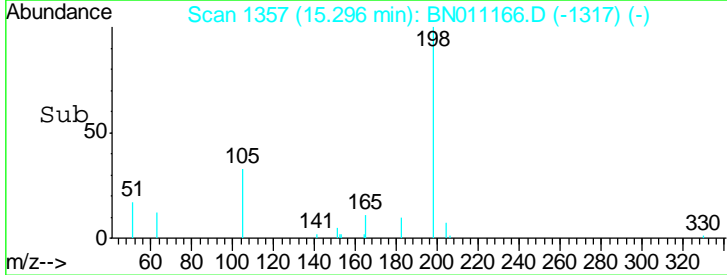
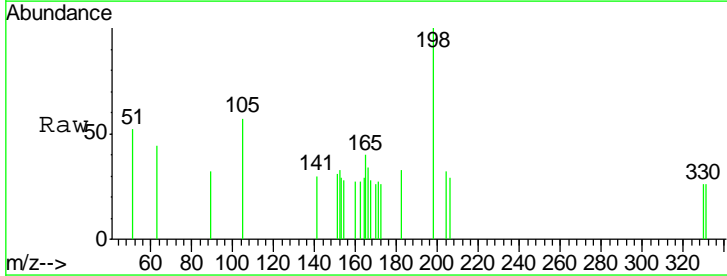
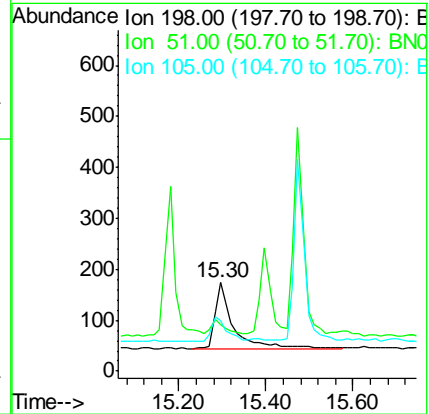
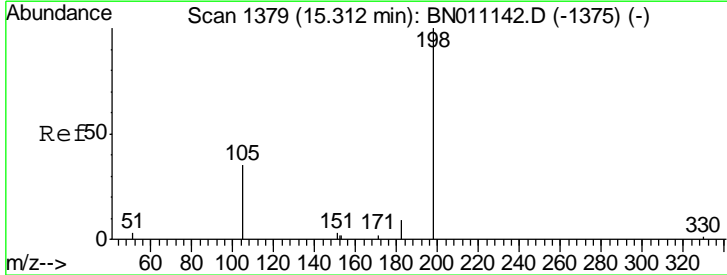
**Manual Integrations**  
**APPROVED**

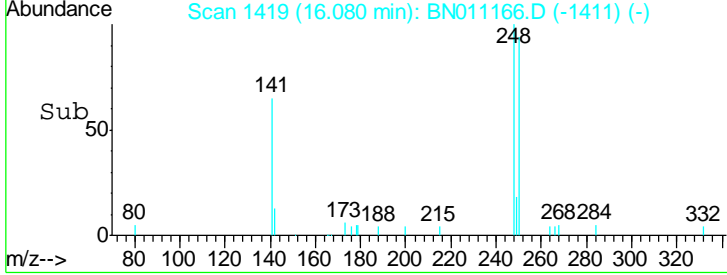
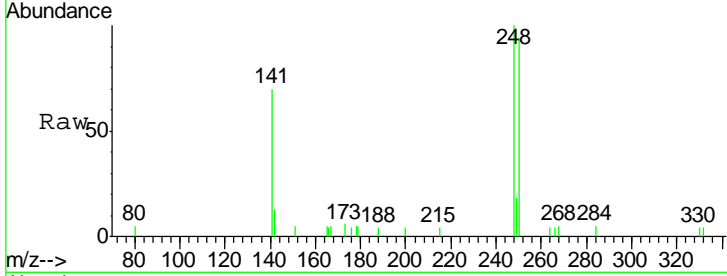
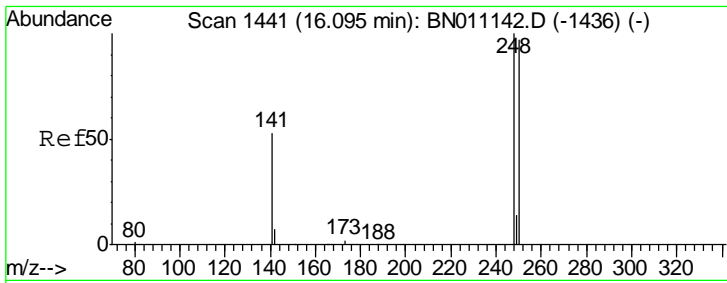
mohammad  
 7/15/2020 10:57:40 AM



#20  
 4,6-Dinitro-2-methylphenol  
 Concen: 0.428 ng  
 RT: 15.30 min Scan# 1357  
 Delta R.T. 0.01 min  
 Lab File: BN011166.D  
 Acq: 14 Jul 2020 19:15

Tgt Ion	Ratio	Lower	Upper
198	100		
51	52.3	53.1	79.7#
105	57.5	51.9	77.9



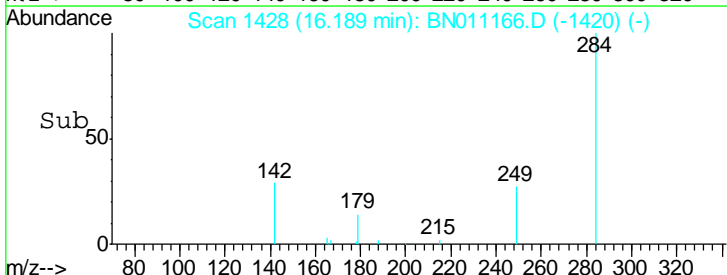
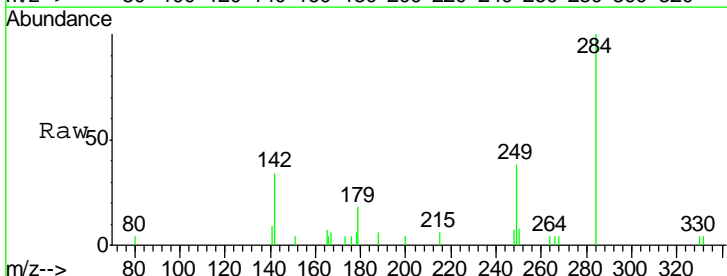
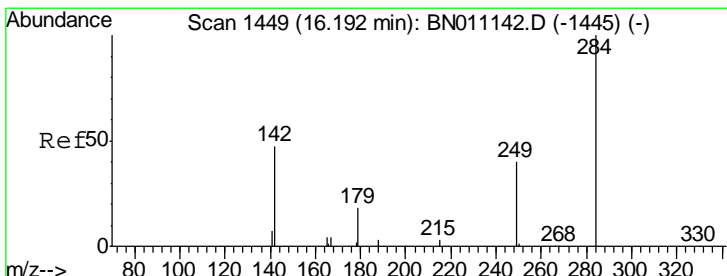
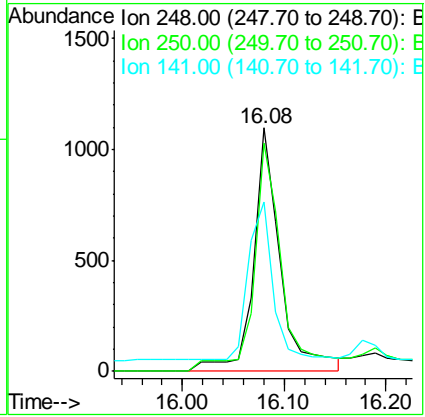


#21  
 4-Bromophenyl-phenylether  
 Concen: 0.438 ng  
 RT: 16.08 min Scan# 1419  
 Delta R.T. -0.00 min  
 Lab File: BN011166.D  
 Acq: 14 Jul 2020 19:15

Tgt Ion	Ratio	Lower	Upper
248	100		
250	93.8	78.4	117.6
141	69.7	45.1	67.7

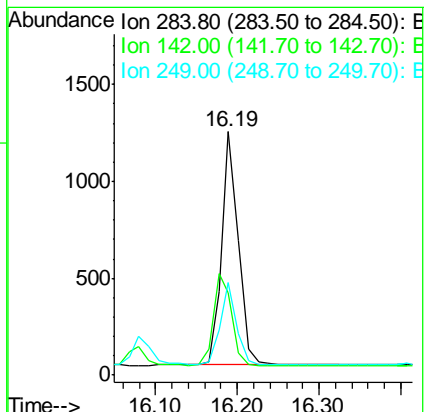
Instrument : BNA\_N  
 ClientSampleId : SSTDCCC0.4EC

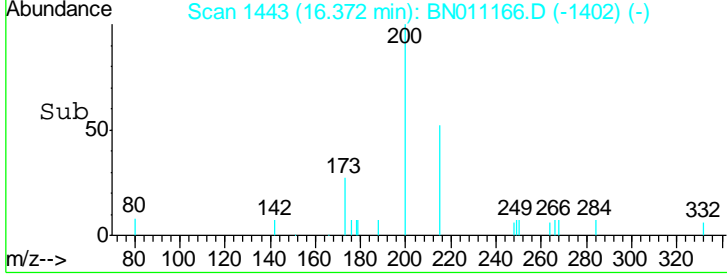
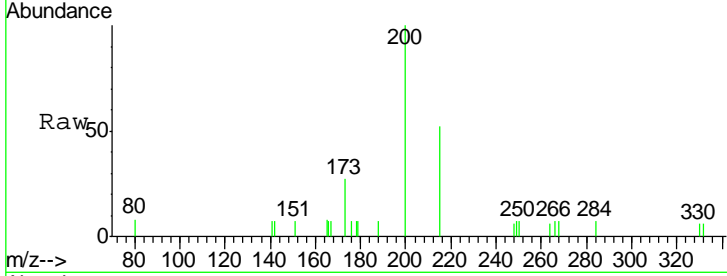
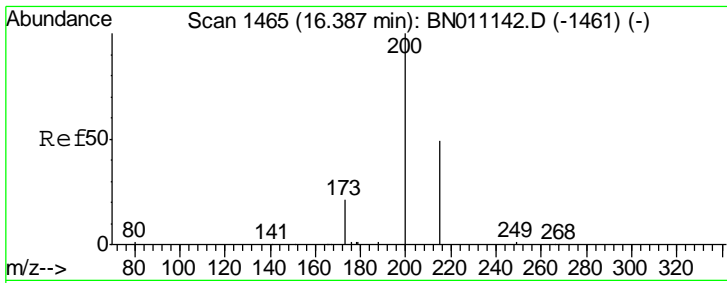
Manual Integrations  
 APPROVED  
 mohammad  
 7/15/2020 10:57:40 AM



#22  
 Hexachlorobenzene  
 Concen: 0.321 ng  
 RT: 16.19 min Scan# 1428  
 Delta R.T. -0.00 min  
 Lab File: BN011166.D  
 Acq: 14 Jul 2020 19:15

Tgt Ion	Ratio	Lower	Upper
284	100		
142	43.1	32.6	48.8
249	33.8	28.4	42.6



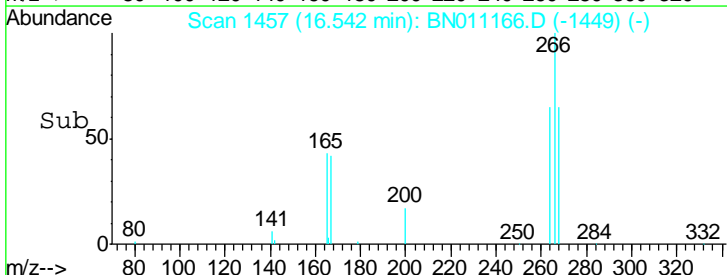
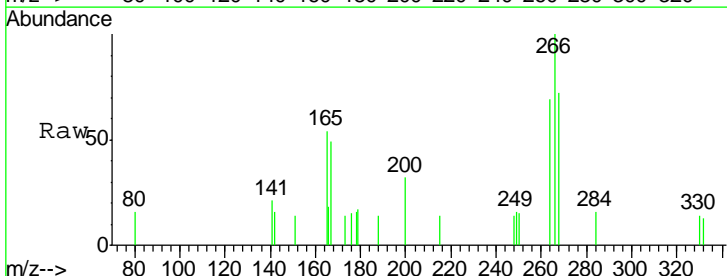
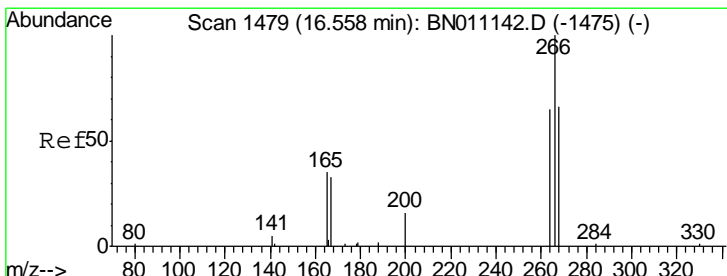
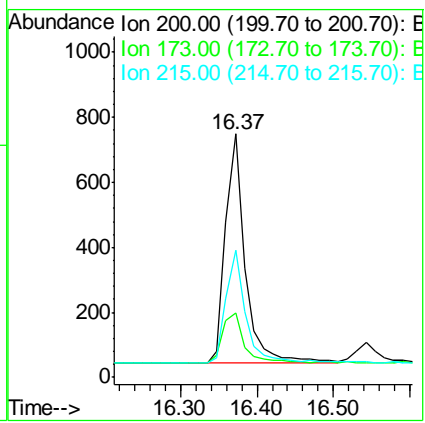


#23  
 Atrazine  
 Concen: 0.384 ng  
 RT: 16.37 min Scan# 1443  
 Delta R.T. 0.01 min  
 Lab File: BN011166.D  
 Acq: 14 Jul 2020 19:15

Tgt Ion	Ratio	Lower	Upper
200	100		
173	26.6	23.0	34.4
215	52.1	42.6	63.8

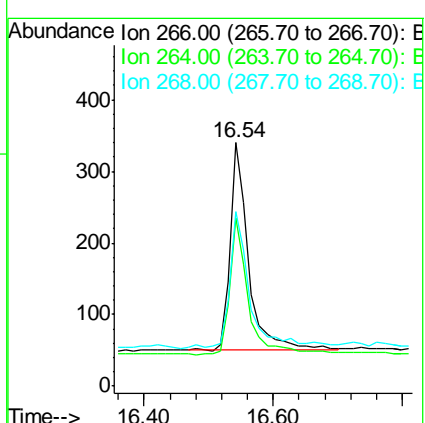
Instrument :  
 BNA\_N  
 ClientSampleId :  
 SSTDCCC0.4EC

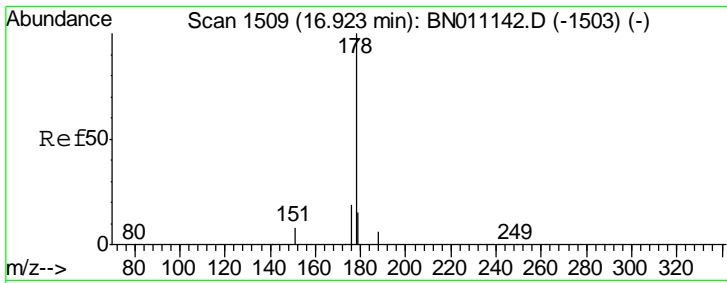
Manual Integrations  
**APPROVED**  
 mohammad  
 7/15/2020 10:57:40 AM



#24  
 Pentachlorophenol  
 Concen: 0.366 ng  
 RT: 16.54 min Scan# 1457  
 Delta R.T. -0.00 min  
 Lab File: BN011166.D  
 Acq: 14 Jul 2020 19:15

Tgt Ion	Ratio	Lower	Upper
266	100		
264	69.2	52.5	78.7
268	65.6	48.9	73.3





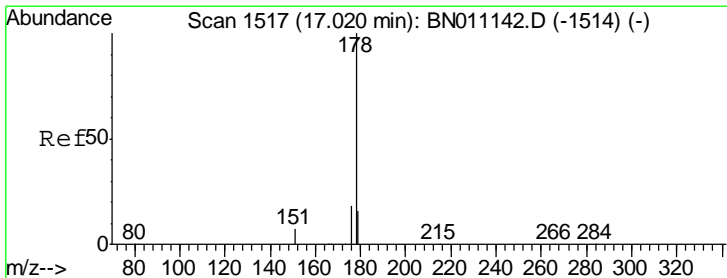
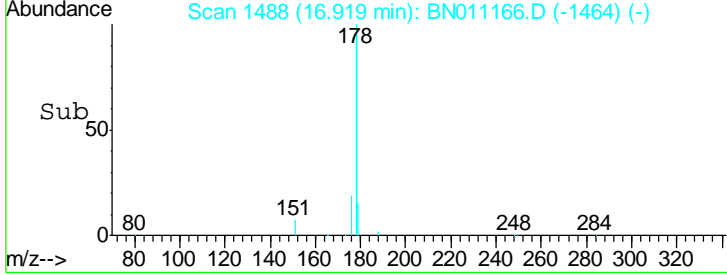
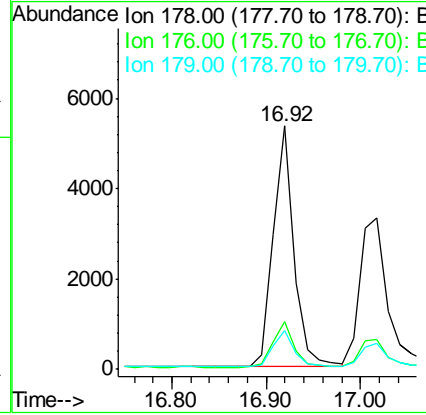
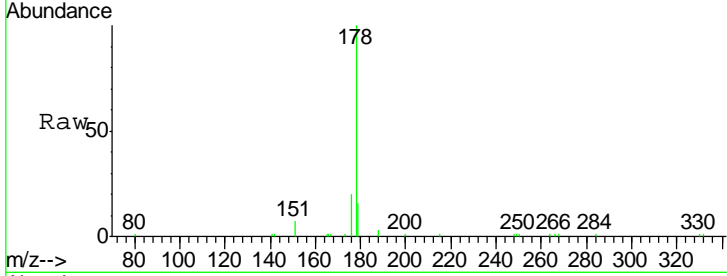
#25  
 Phenanthrene  
 Concen: 0.370 ng  
 RT: 16.92 min Scan# 1488  
 Delta R.T. -0.00 min  
 Lab File: BN011166.D  
 Acq: 14 Jul 2020 19:15

Instrument :  
 BNA\_N  
 ClientSampled :  
 SSTDCCC0.4EC

Tgt Ion	Resp	Lower	Upper
178	100		
176	19.0	15.3	22.9
179	15.5	12.6	18.8

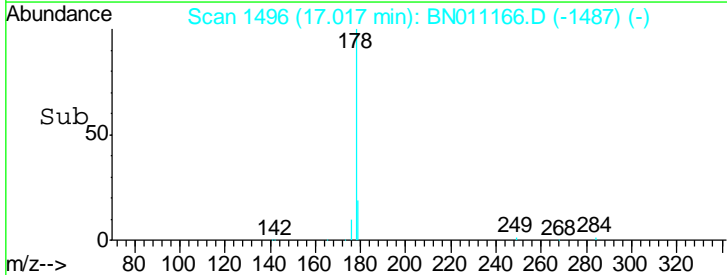
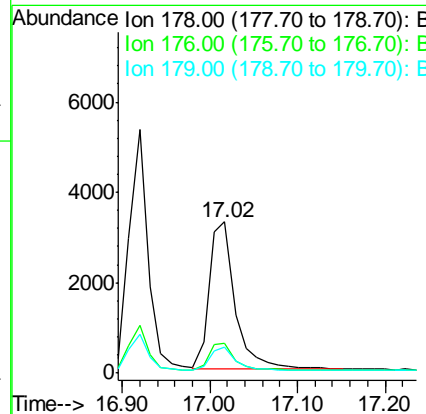
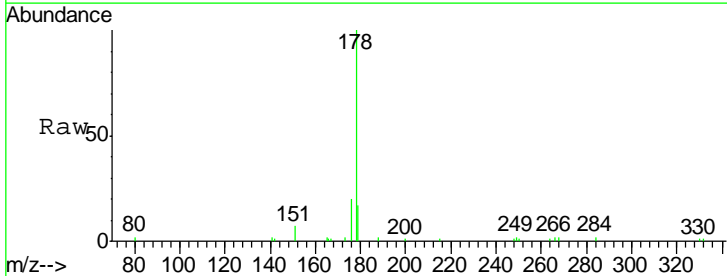
Manual Integrations  
 APPROVED

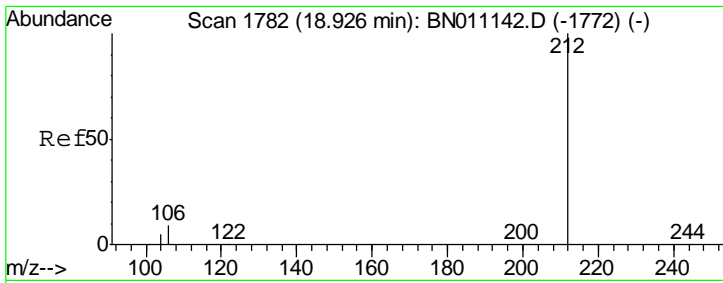
mohammad  
 7/15/2020 10:57:40 AM



#26  
 Anthracene  
 Concen: 0.365 ng  
 RT: 17.02 min Scan# 1496  
 Delta R.T. 0.01 min  
 Lab File: BN011166.D  
 Acq: 14 Jul 2020 19:15

Tgt Ion	Resp	Lower	Upper
178	100		
176	18.6	14.5	21.7
179	15.1	12.0	18.0





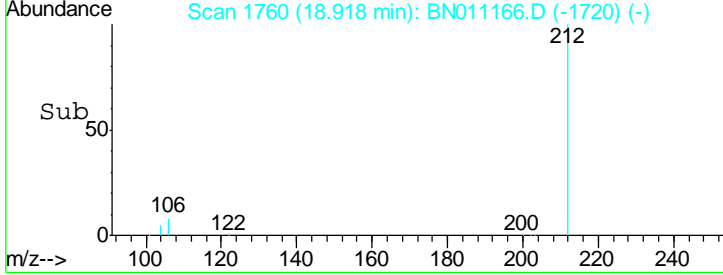
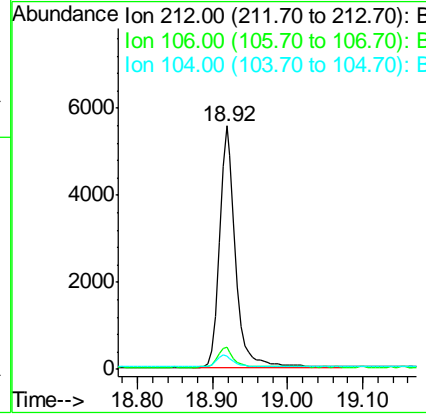
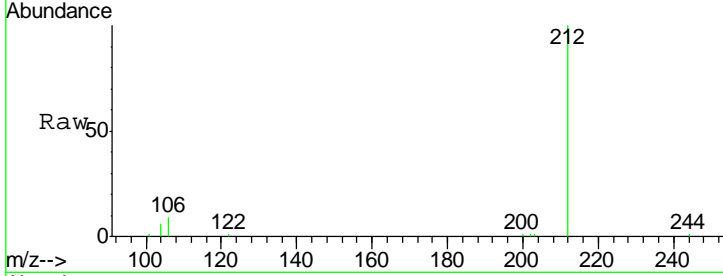
#27  
 Fluoranthene-d10  
 Concen: 0.389 ng  
 RT: 18.92 min Scan# 1760  
 Delta R.T. -0.00 min  
 Lab File: BN011166.D  
 Acq: 14 Jul 2020 19:15

**Instrument :**  
 BNA\_N  
**ClientSampled :**  
 SSTDCCC0.4EC

Tgt Ion	Resp	Lower	Upper
212	100		
106	8.1	7.0	10.6
104	5.0	4.2	6.4

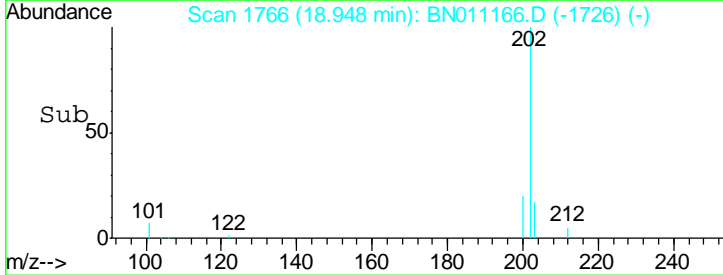
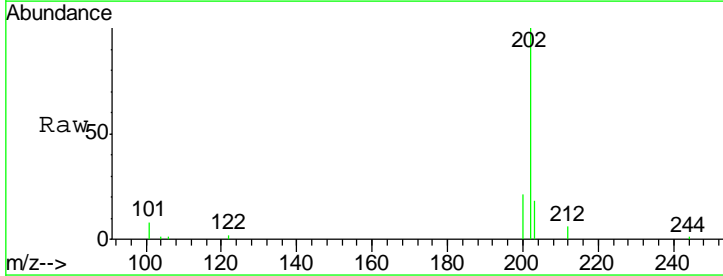
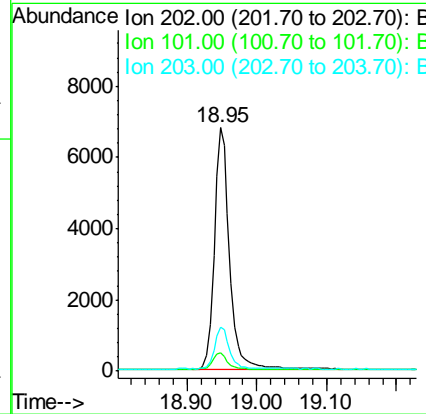
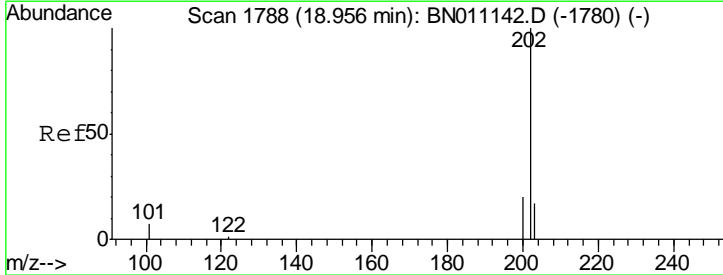
**Manual Integrations**  
**APPROVED**

mohammad  
 7/15/2020 10:57:40 AM

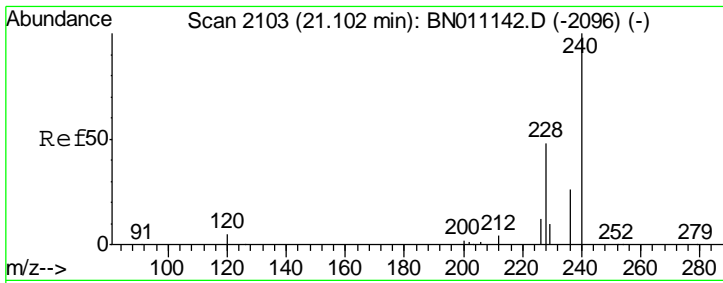


#28  
 Fluoranthene  
 Concen: 0.386 ng  
 RT: 18.95 min Scan# 1766  
 Delta R.T. -0.00 min  
 Lab File: BN011166.D  
 Acq: 14 Jul 2020 19:15

Tgt Ion	Resp	Lower	Upper
202	100		
101	6.9	5.9	8.9
203	16.9	13.6	20.4

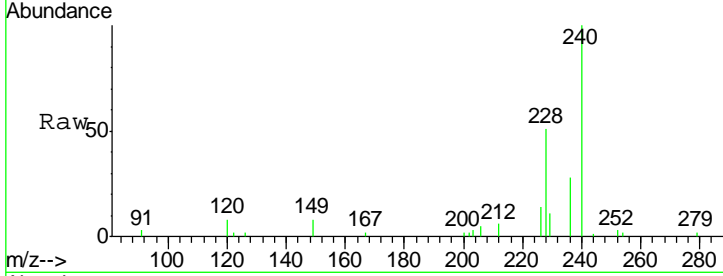






#29  
 Chrysene-d12  
 Concen: 0.400 ng  
 RT: 21.09 min Scan# 2081  
 Delta R.T. -0.00 min  
 Lab File: BN011166.D  
 Acq: 14 Jul 2020 19:15

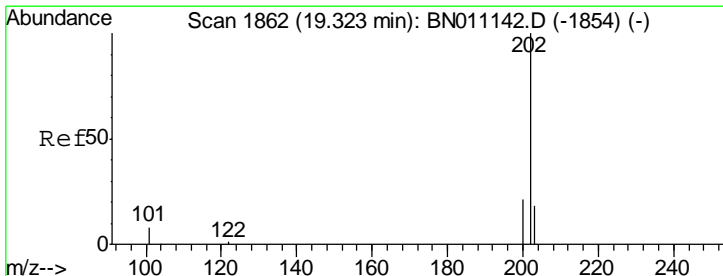
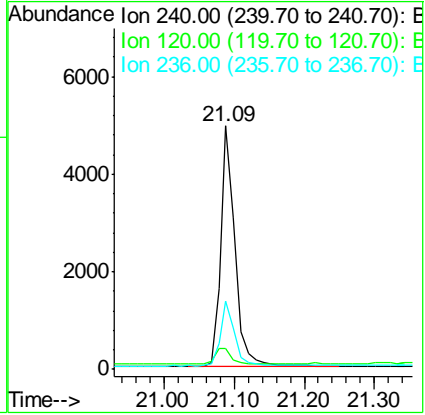
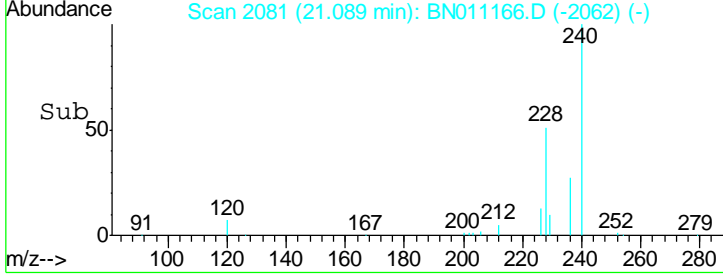
**Instrument :**  
 BNA\_N  
**ClientSampled :**  
 SSTDCCC0.4EC



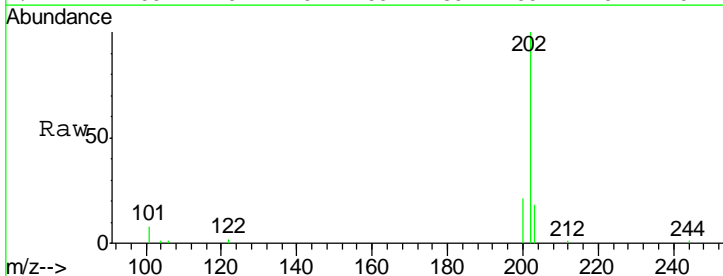
Tgt Ion: 240 Resp: 7186

Ion	Ratio	Lower	Upper
240	100		
120	8.5	6.5	9.7
236	28.2	21.9	32.9

**Manual Integrations**  
**APPROVED**  
 mohammad  
 7/15/2020 10:57:40 AM

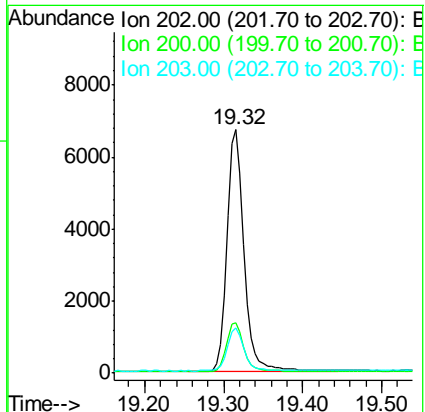
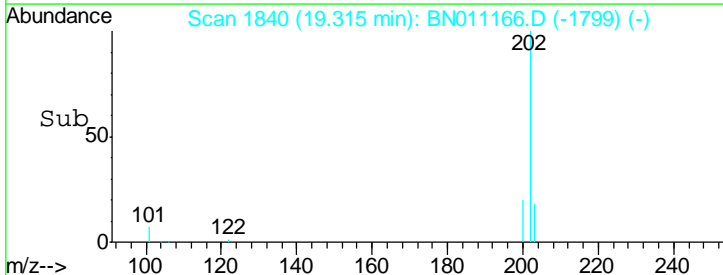


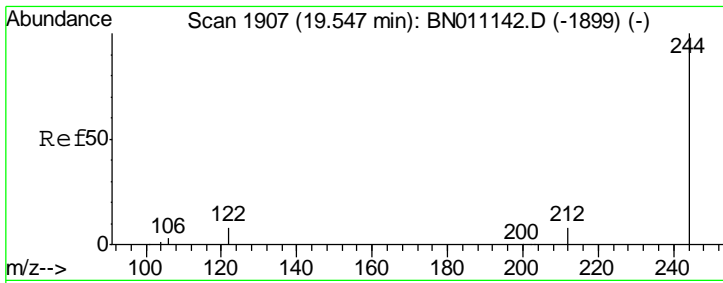
#30  
 Pyrene  
 Concen: 0.371 ng  
 RT: 19.32 min Scan# 1840  
 Delta R.T. 0.00 min  
 Lab File: BN011166.D  
 Acq: 14 Jul 2020 19:15



Tgt Ion: 202 Resp: 10190

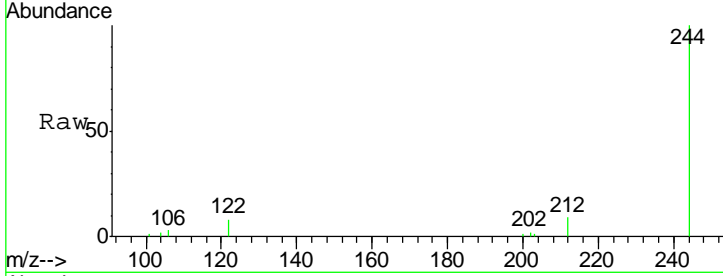
Ion	Ratio	Lower	Upper
202	100		
200	20.5	16.5	24.7
203	17.5	14.2	21.4





#31  
 Terphenyl-d14  
 Concen: 0.388 ng  
 RT: 19.54 min Scan# 1885  
 Delta R.T. 0.00 min  
 Lab File: BN011166.D  
 Acq: 14 Jul 2020 19:15

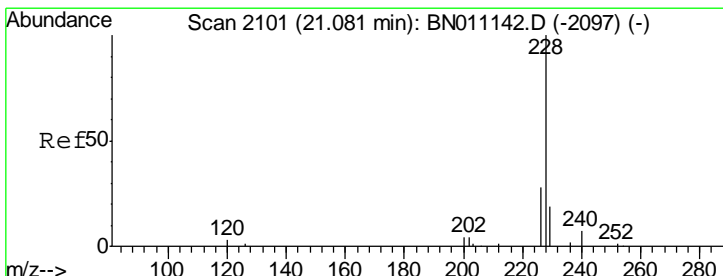
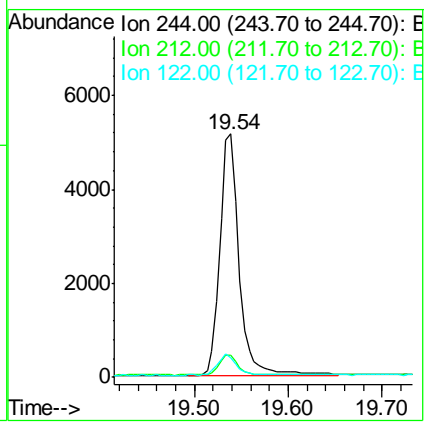
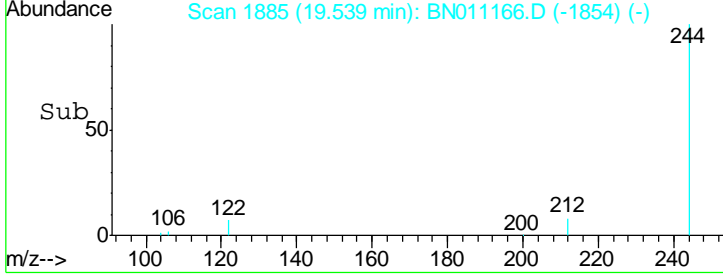
**Instrument :**  
 BNA\_N  
**Client Sampled :**  
 SSTDCCC0.4EC



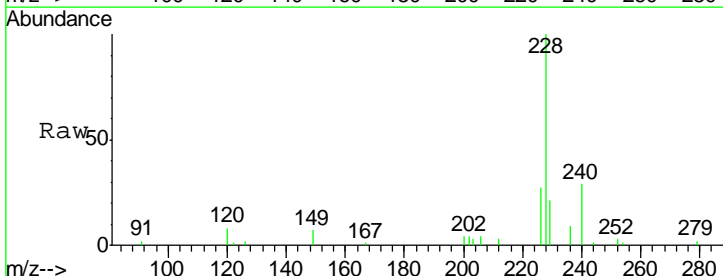
Tgt Ion: 244 Resp: 7264

Ion	Ratio	Lower	Upper
244	100		
212	9.0	7.8	11.6
122	8.2	7.4	11.0

**Manual Integrations**  
**APPROVED**  
 mohammad  
 7/15/2020 10:57:40 AM

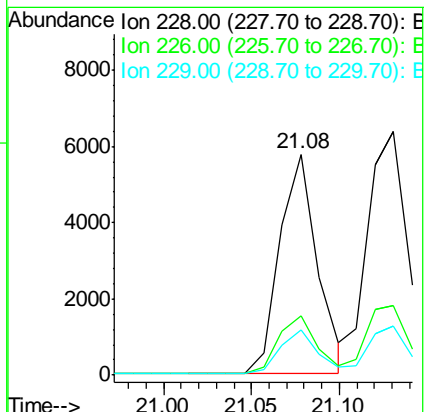
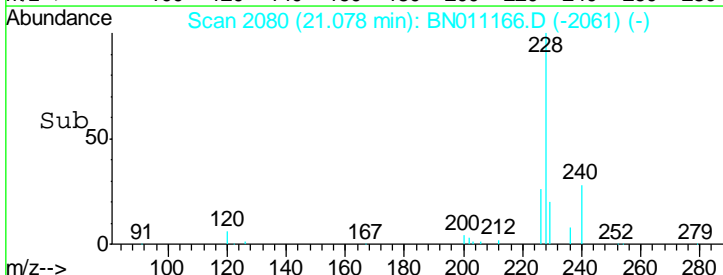


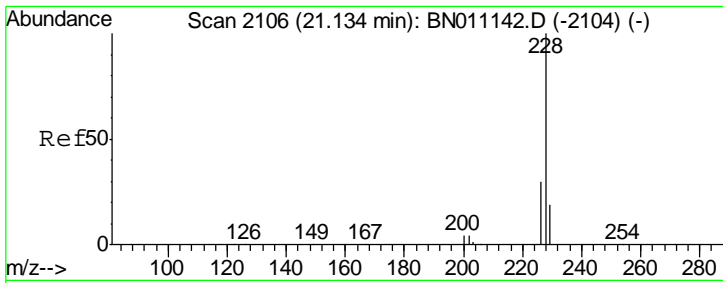
#32  
 Benzo(a)anthracene  
 Concen: 0.370 ng  
 RT: 21.08 min Scan# 2080  
 Delta R.T. -0.00 min  
 Lab File: BN011166.D  
 Acq: 14 Jul 2020 19:15



Tgt Ion: 228 Resp: 8607

Ion	Ratio	Lower	Upper
228	100		
226	27.0	23.2	34.8
229	20.5	16.2	24.4



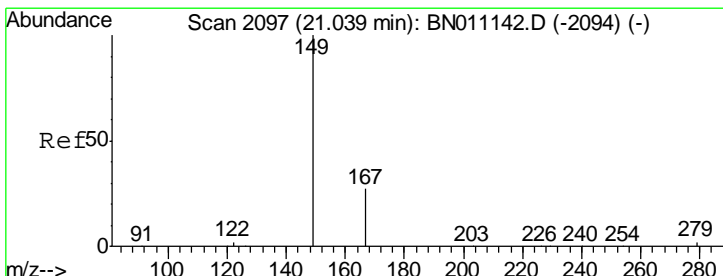
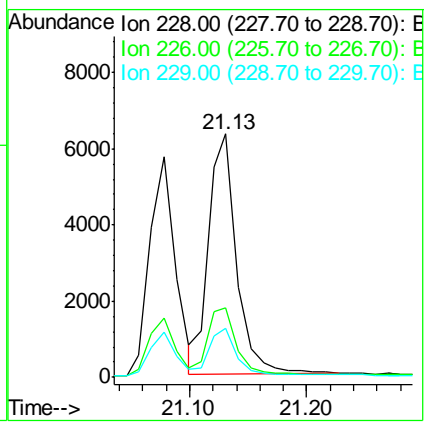
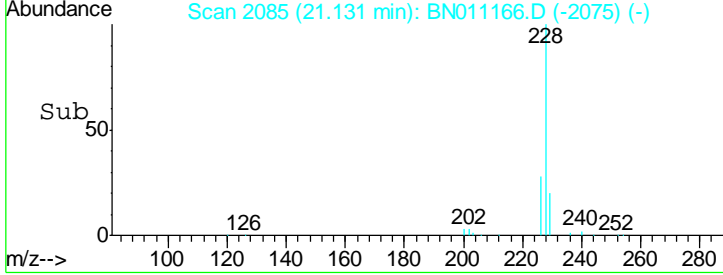
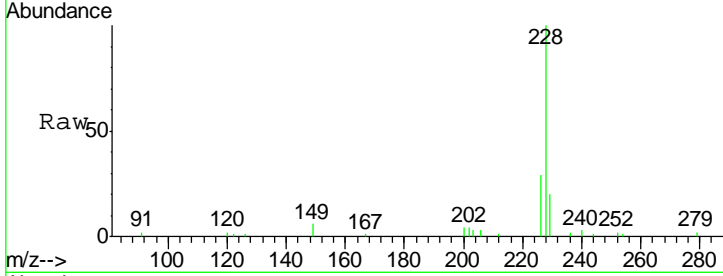


#33  
 Chrysene  
 Concen: 0.368 ng  
 RT: 21.13 min Scan# 2085  
 Delta R.T. 0.01 min  
 Lab File: BN011166.D  
 Acq: 14 Jul 2020 19:15

Instrument :  
 BNA\_N  
 ClientSampled :  
 SSTDCCC0.4EC

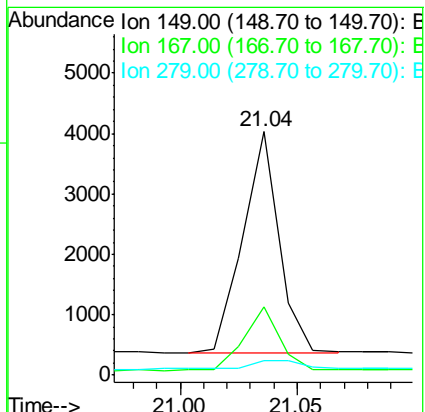
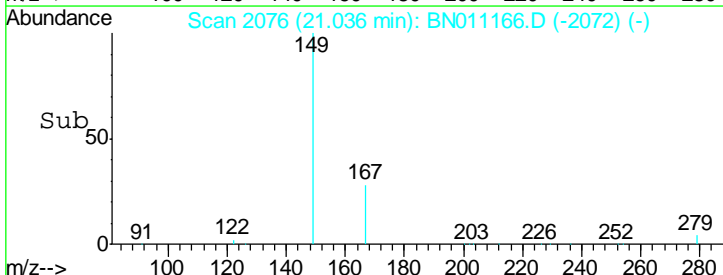
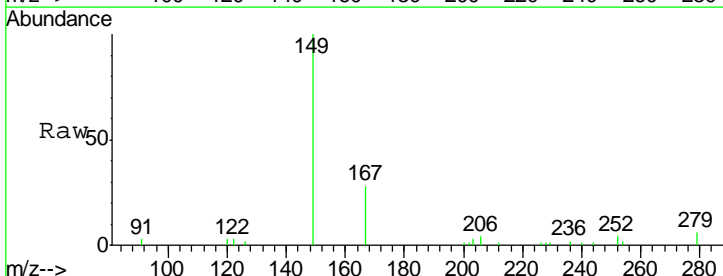
Tgt Ion	Resp	Lower	Upper
228	10479		
226	28.8	24.0	36.0
229	20.3	16.2	24.4

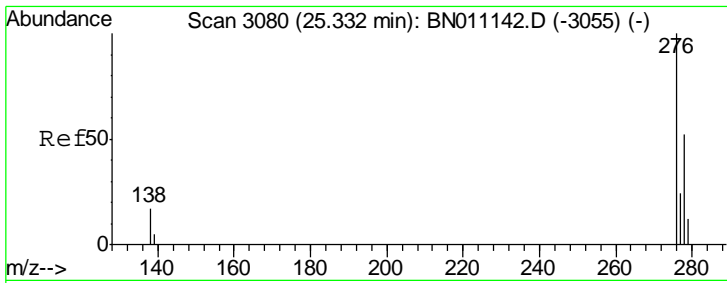
Manual Integrations  
**APPROVED**  
 mohammad  
 7/15/2020 10:57:40 AM



#34  
 Bis(2-ethylhexyl)phthalate  
 Concen: 0.415 ng  
 RT: 21.04 min Scan# 2076  
 Delta R.T. -0.00 min  
 Lab File: BN011166.D  
 Acq: 14 Jul 2020 19:15

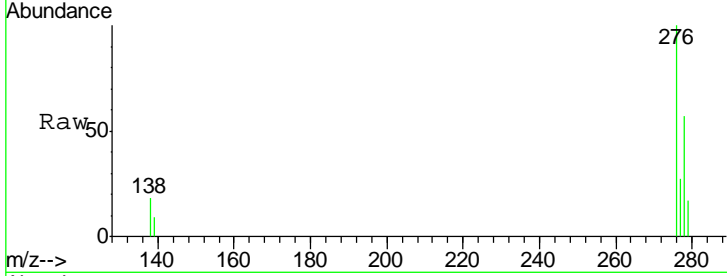
Tgt Ion	Resp	Lower	Upper
149	3976		
167	27.7	23.4	35.0
279	4.9	4.5	6.7





#35  
 Indeno(1,2,3-cd)pyrene  
 Concen: 0.371 ng  
 RT: 25.31 min Scan# 3054  
 Delta R.T. -0.01 min  
 Lab File: BN011166.D  
 Acq: 14 Jul 2020 19:15

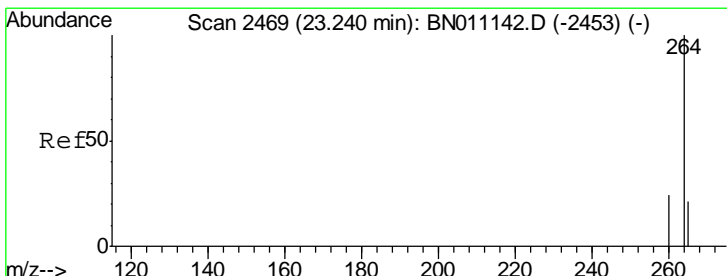
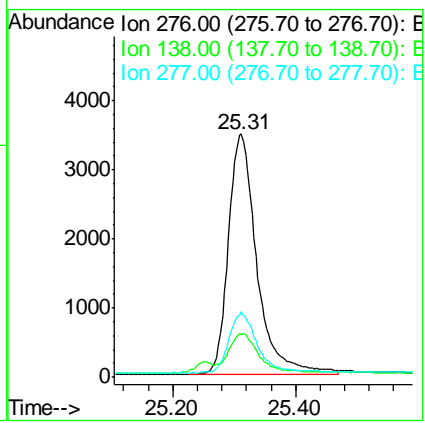
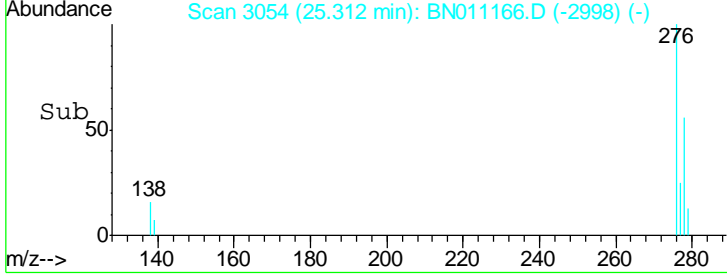
**Instrument :**  
 BNA\_N  
**ClientSampled :**  
 SSTDCCC0.4EC



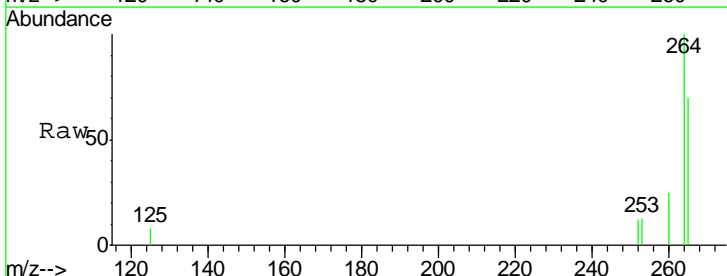
Tgt Ion: 276 Resp: 11109

Ion	Ratio	Lower	Upper
276	100		
138	16.4	13.0	19.6
277	24.4	19.7	29.5

**Manual Integrations**  
**APPROVED**  
 mohammad  
 7/15/2020 10:57:40 AM

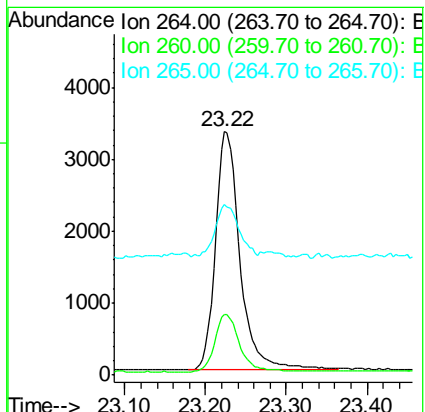
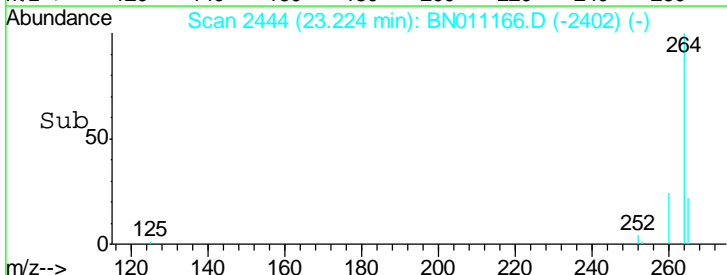


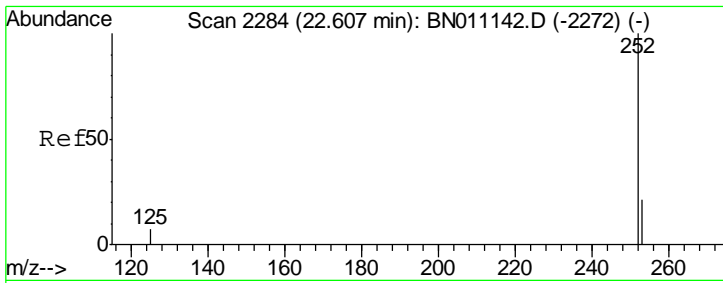
#36  
 Perylene-d12  
 Concen: 0.400 ng  
 RT: 23.22 min Scan# 2444  
 Delta R.T. -0.01 min  
 Lab File: BN011166.D  
 Acq: 14 Jul 2020 19:15



Tgt Ion: 264 Resp: 7043

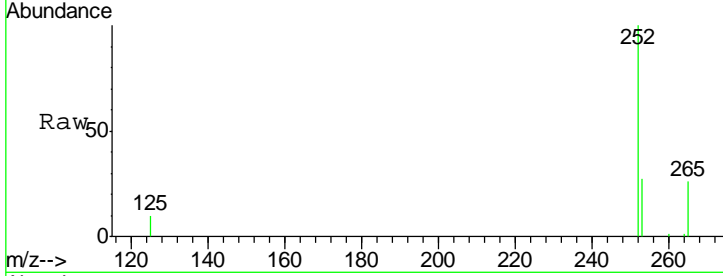
Ion	Ratio	Lower	Upper
264	100		
260	25.0	20.1	30.1
265	69.9	76.6	115.0#





#37  
 Benzo(b)fluoranthene  
 Concen: 0.343 ng  
 RT: 22.60 min Scan# 2261  
 Delta R.T. -0.00 min  
 Lab File: BN011166.D  
 Acq: 14 Jul 2020 19:15

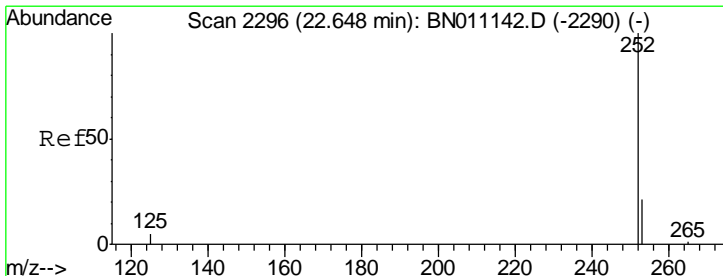
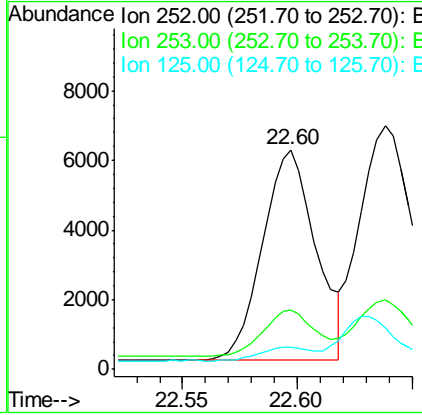
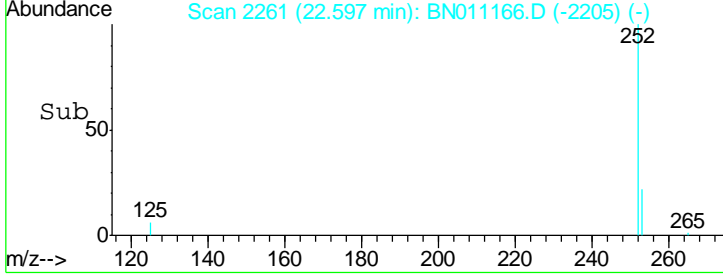
**Instrument :**  
 BNA\_N  
**ClientSampled :**  
 SSTDCCC0.4EC



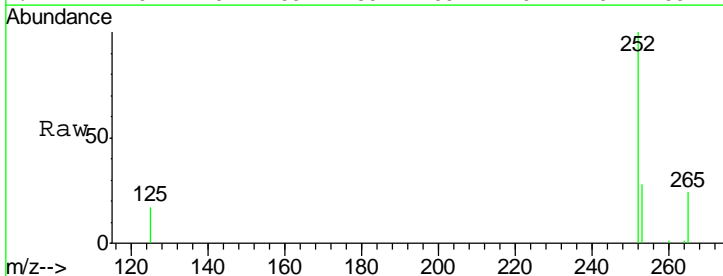
Tgt Ion: 252 Resp: 9704

Ion	Ratio	Lower	Upper
252	100		
253	26.8	22.6	34.0
125	9.9	9.6	14.4

**Manual Integrations**  
**APPROVED**  
 mohammad  
 7/15/2020 10:57:40 AM

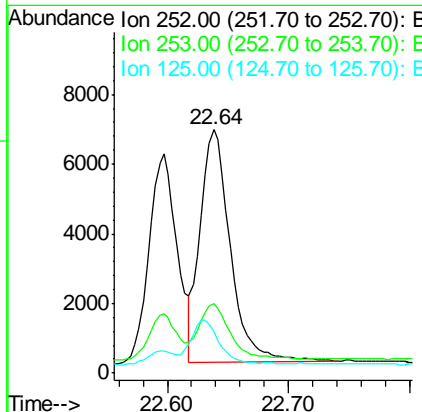
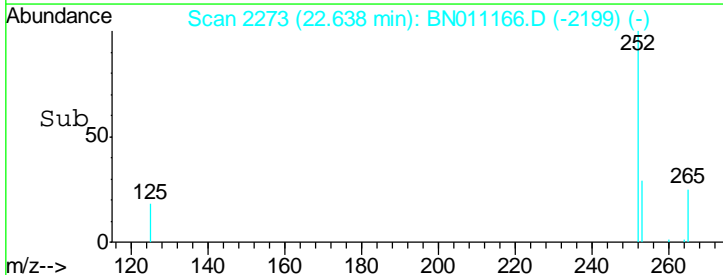


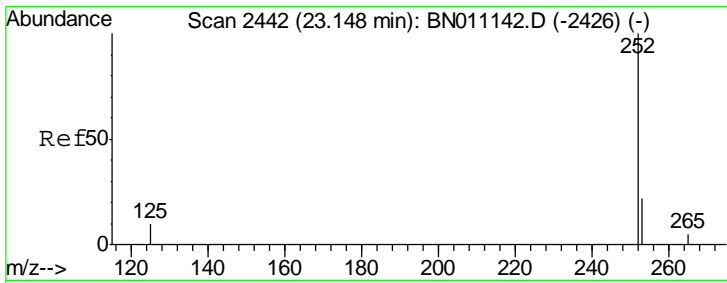
#38  
 Benzo(k)fluoranthene  
 Concen: 0.362 ng  
 RT: 22.64 min Scan# 2273  
 Delta R.T. -0.00 min  
 Lab File: BN011166.D  
 Acq: 14 Jul 2020 19:15



Tgt Ion: 252 Resp: 11574

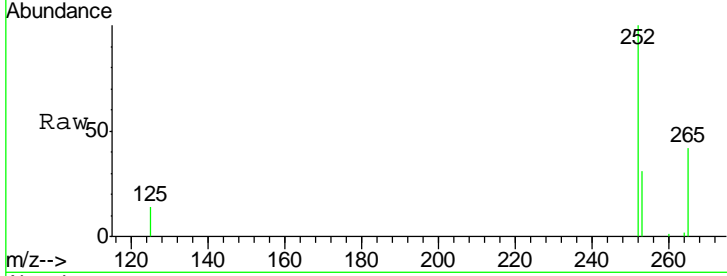
Ion	Ratio	Lower	Upper
252	100		
253	28.4	22.2	33.4
125	17.2	11.0	16.4#





#39  
 Benzo(a)pyrene  
 Concen: 0.349 ng  
 RT: 23.13 min Scan# 2418  
 Delta R.T. -0.00 min  
 Lab File: BN011166.D  
 Acq: 14 Jul 2020 19:15

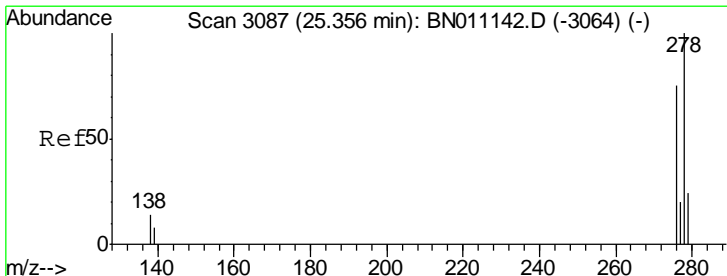
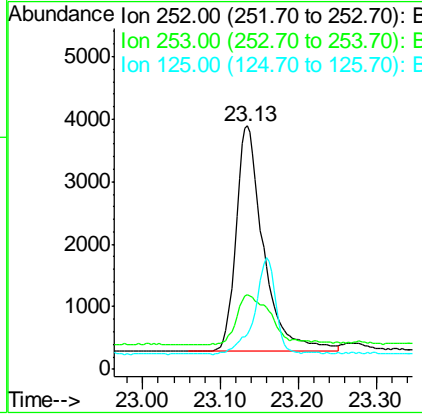
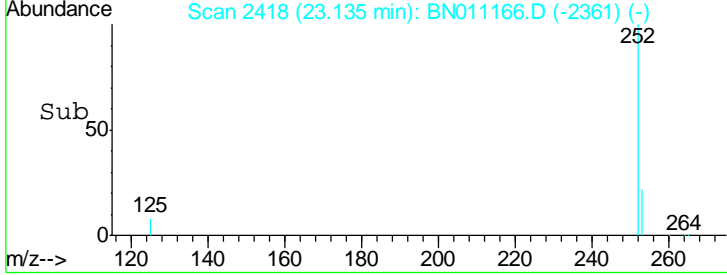
**Instrument :**  
 BNA\_N  
**ClientSampled :**  
 SSTDCCC0.4EC



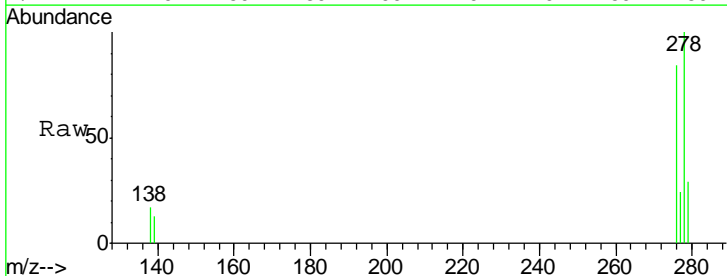
Tgt Ion: 252 Resp: 8898

Ion	Ratio	Lower	Upper
252	100		
253	30.9	25.8	38.6
125	14.2	13.4	20.0

**Manual Integrations**  
**APPROVED**  
 mohammad  
 7/15/2020 10:57:40 AM

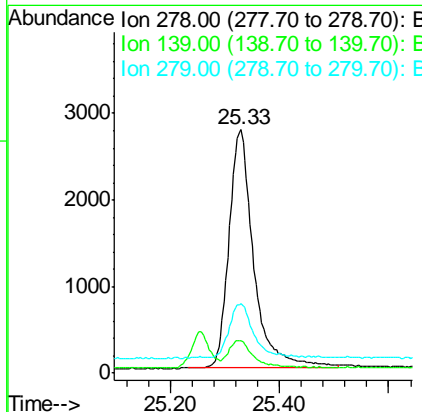
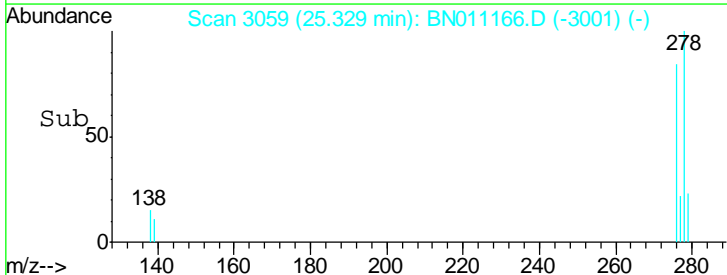


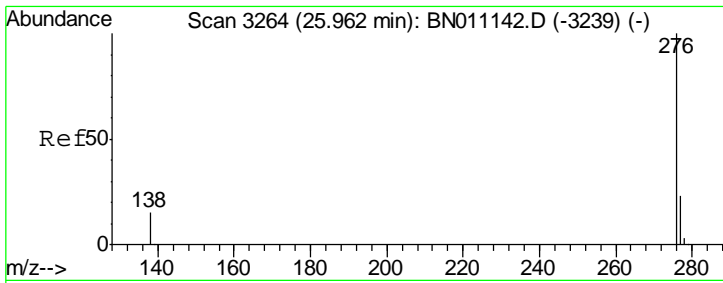
#40  
 Dibenzo(a,h)anthracene  
 Concen: 0.323 ng  
 RT: 25.33 min Scan# 3059  
 Delta R.T. 0.00 min  
 Lab File: BN011166.D  
 Acq: 14 Jul 2020 19:15



Tgt Ion: 278 Resp: 8718

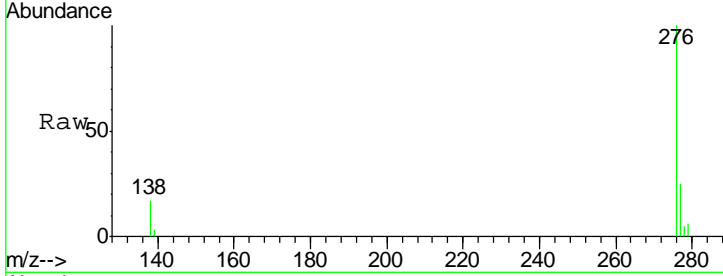
Ion	Ratio	Lower	Upper
278	100		
139	13.1	11.7	17.5
279	28.8	25.0	37.6





#41  
 Benzo(a,h,i)perylene  
 Concen: 0.310 ng  
 RT: 25.94 min Scan# 3237  
 Delta R.T. -0.01 min  
 Lab File: BN011166.D  
 Acq: 14 Jul 2020 19:15

**Instrument :**  
 BNA\_N  
**ClientSampled :**  
 SSTDCCC0.4EC



Tot Ion: 276 Resp: 9175

Ion	Ratio	Lower	Upper
276	100		
277	25.3	20.5	30.7
138	17.0	13.8	20.6

**Manual Integrations**  
**APPROVED**  
 mohammad  
 7/15/2020 10:57:40 AM

