

Data Path : Z:\svoasrv\HPCHEM1\BNA\_N\Data\BN072221\  
 Data File : BN015641.D  
 Acq On : 21 Jul 2021 12:19  
 Operator : CG/JU  
 Sample : SSTDICC0.1  
 Misc :  
 ALS Vial : 2 Sample Multiplier: 1

Instrument :  
 BNA\_N  
 ClientSampled :  
 SSTDICC0.1

Manual Integrations  
 APPROVED

mohammad  
 7/22/2021 1:30:28 PM

Quant Time: Jul 21 14:14:46 2021  
 Quant Method : Z:\SVOASRV\HPCHEM1\BNA\_N\METHODS\8270-SIM-BN072221.M  
 Quant Title : ASP BNA STANDARDS FOR 5 POINT CALIBRATION  
 QLast Update : Wed Jul 21 14:10:52 2021  
 Response via : Initial Calibration

Compound	R.T.	QIon	Response	Conc	Units	Dev(Min)	
Internal Standards							
1) 1,4-Dichlorobenzene-d4	7.744	152	12080	0.400	ng	0.00	
7) Naphthalene-d8	10.521	136	53976	0.400	ng	0.00	
13) Acenaphthene-d10	14.370	164	29262	0.400	ng	0.00	
19) Phenanthrene-d10	17.127	188	56942	0.400	ng	0.00	
29) Chrysene-d12	21.323	240	53623	0.400	ng	0.00	
35) Perylene-d12	23.638	264	52571	0.400	ng	0.00	
System Monitoring Compounds							
4) 2-Fluorophenol	5.346	112	3848	0.111	ng	0.00	
5) Phenol-d6	6.914	99	4558	0.111	ng	0.00	
8) Nitrobenzene-d5	8.886	82	3857	0.099	ng	0.00	
11) 2-Methylnaphthalene-d10	12.118	152	9711	0.109	ng	0.00	
14) 2,4,6-Tribromophenol	15.867	330	1270	0.120	ng	0.00	
15) 2-Fluorobiphenyl	13.000	172	11899	0.101	ng	0.00	
27) Fluoranthene-d10	19.162	212	19169	0.111	ng	0.00	
31) Terphenyl-d14	19.768	244	13222	0.104	ng	0.00	
Target Compounds							
2) 1,4-Dioxane	3.290	88	393	0.067	ng	#	52
3) n-Nitrosodimethylamine	3.650	42	1007	0.101	ng		98
6) bis(2-Chloroethyl)ether	7.172	93	3934	0.107	ng		99
9) Naphthalene	10.571	128	17452	0.111	ng		99
10) Hexachlorobutadiene	10.863	225	3026	0.103	ng	#	100
12) 2-Methylnaphthalene	12.189	142	10477	0.105	ng		99
16) Acenaphthylene	14.091	152	12604	0.093	ng		99
17) Acenaphthene	14.434	154	9235	0.102	ng		99
18) Fluorene	15.423	166	11308	0.104	ng		99
20) 4,6-Dinitro-2-methylph...	15.512	198	333	0.145	ng	#	67
21) 4-Bromophenyl-phenylether	16.324	248	3582	0.099	ng		99
22) Hexachlorobenzene	16.433	284	3876	0.095	ng		99
23) Atrazine	16.591	200	2619	0.100	ng		99
24) Pentachlorophenol	16.786	266	598	0.069	ng		97
25) Phenanthrene	17.163	178	18507	0.101	ng		99
26) Anthracene	17.249	178	15353	0.097	ng		100
28) Fluoranthene	19.192	202	20808	0.104	ng		100
30) Pyrene	19.554	202	21646	0.105	ng		100
32) Benzo(a)anthracene	21.312	228	19511	0.104	ng		97
33) Chrysene	21.365	228	20099	0.101	ng		97
34) Bis(2-ethylhexyl)phtha...	21.249	149	11697	0.146	ng		100
36) Indeno(1,2,3-cd)pyrene	26.010	276	23021	0.123	ng		96
37) Benzo(b)fluoranthene	22.940	252	20361m	0.099	ng		
38) Benzo(k)fluoranthene	22.985	252	21382	0.103	ng		95
39) Benzo(a)pyrene	23.539	252	18029	0.102	ng	#	86
40) Dibenzo(a,h)anthracene	26.028	278	18685	0.127	ng		95
41) Benzo(g,h,i)perylene	26.736	276	19124	0.120	ng		98

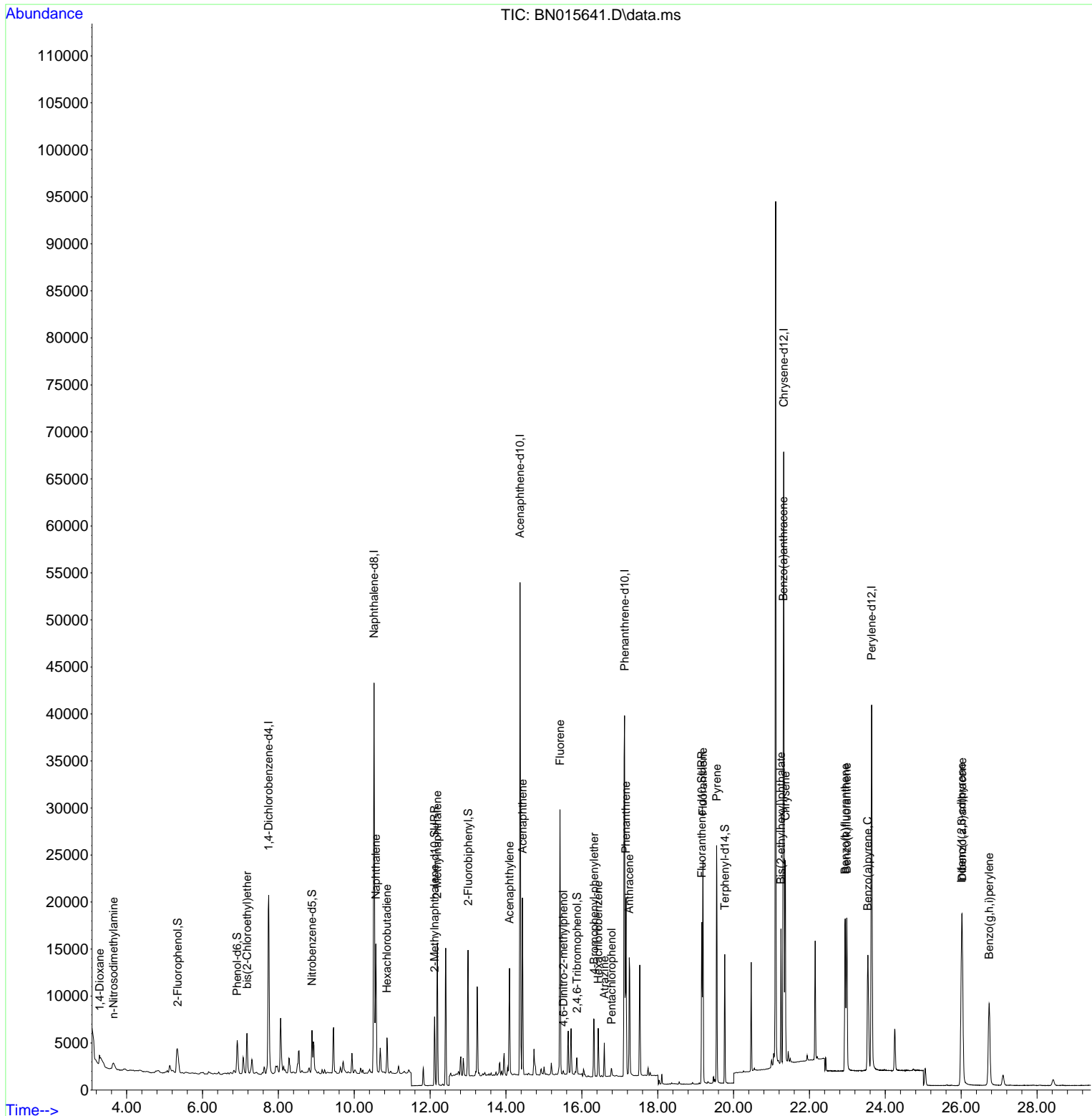
(#) = qualifier out of range (m) = manual integration (+) = signals summed

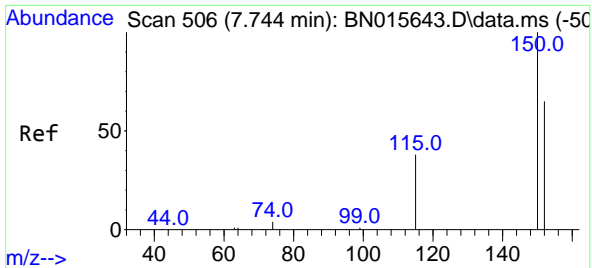
Data Path : Z:\svoasrv\HPCHEM1\BNA\_N\Data\BN072221\  
 Data File : BN015641.D  
 Acq On : 21 Jul 2021 12:19  
 Operator : CG/JU  
 Sample : SSTDICC0.1  
 Misc :  
 ALS Vial : 2 Sample Multiplier: 1

Instrument :  
 BNA\_N  
 ClientSampled :  
 SSTDICC0.1

Manual Integrations  
**APPROVED**  
 mohammad  
 7/22/2021 1:30:28 PM

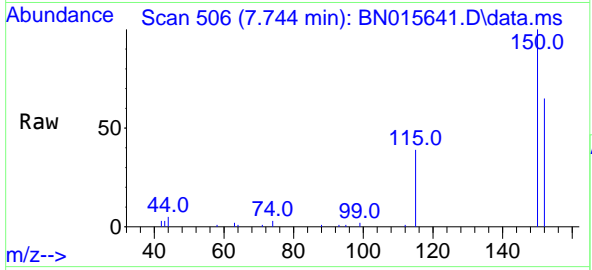
Quant Time: Jul 21 14:14:46 2021  
 Quant Method : Z:\SVOASRV\HPCHEM1\BNA\_N\METHODS\8270-SIM-BN072221.M  
 Quant Title : ASP BNA STANDARDS FOR 5 POINT CALIBRATION  
 QLast Update : Wed Jul 21 14:10:52 2021  
 Response via : Initial Calibration





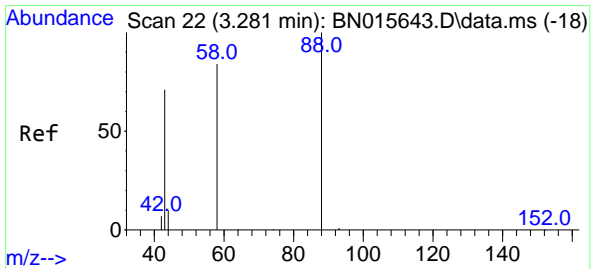
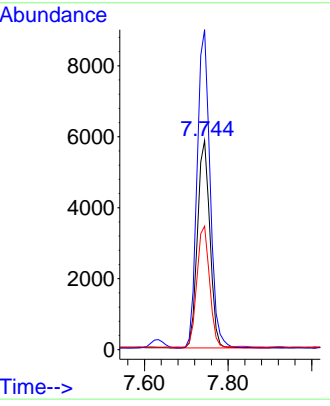
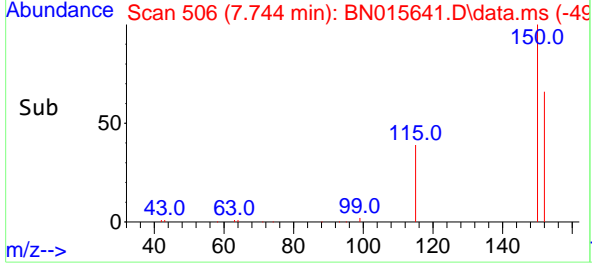
#1  
 1,4-Dichlorobenzene-d4  
 Concen: 0.400 ng  
 RT: 7.744 min Scan# 506  
 Delta R.T. -0.000 min  
 Lab File: BN015641.D  
 Acq: 21 Jul 2021 12:19

**Instrument :**  
 BNA\_N  
**ClientSampled :**  
 SSTDICC0.1

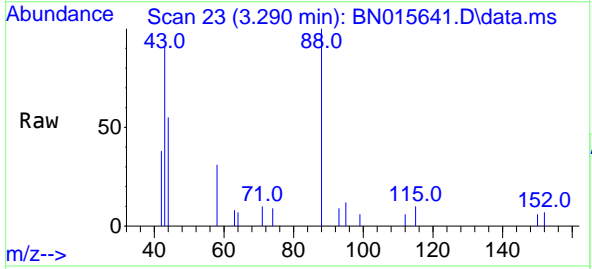


Tgt Ion:152 Resp: 12080  
 Ion Ratio Lower Upper  
 152 100  
 150 153.1 123.4 185.2  
 115 59.1 47.0 70.6

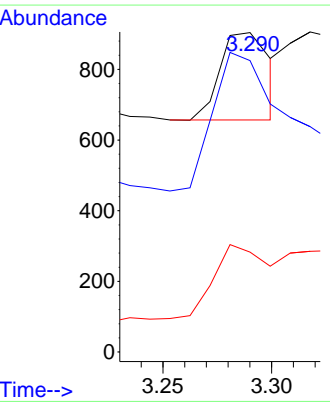
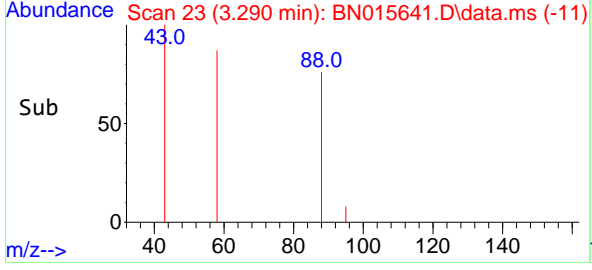
**Manual Integrations**  
**APPROVED**  
 mohammad  
 7/22/2021 1:30:28 PM

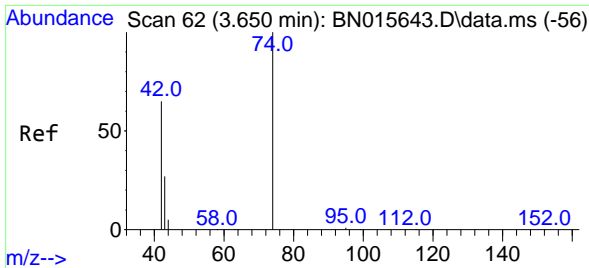


#2  
 1,4-Dioxane  
 Concen: 0.067 ng  
 RT: 3.290 min Scan# 23  
 Delta R.T. 0.009 min  
 Lab File: BN015641.D  
 Acq: 21 Jul 2021 12:19



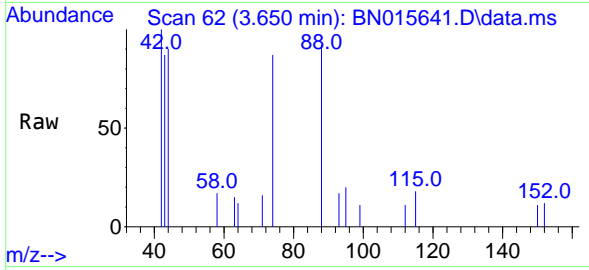
Tgt Ion: 88 Resp: 393  
 Ion Ratio Lower Upper  
 88 100  
 43 276.6 144.0 216.0#  
 58 98.7 72.6 108.8





#3  
 n-Nitrosodimethylamine  
 Concen: 0.101 ng  
 RT: 3.650 min Scan# 62  
 Delta R.T. -0.000 min  
 Lab File: BN015641.D  
 Acq: 21 Jul 2021 12:19

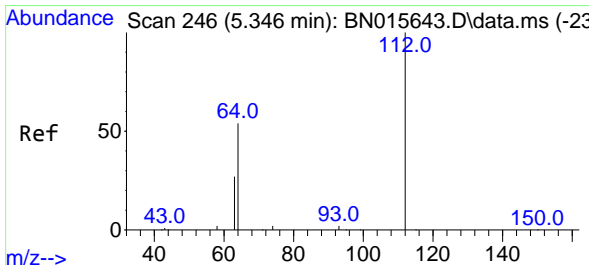
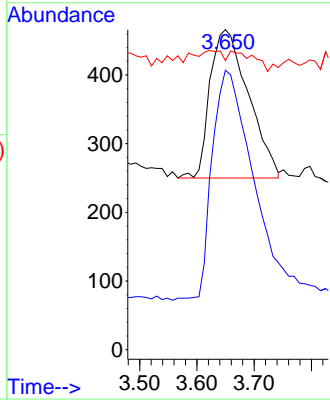
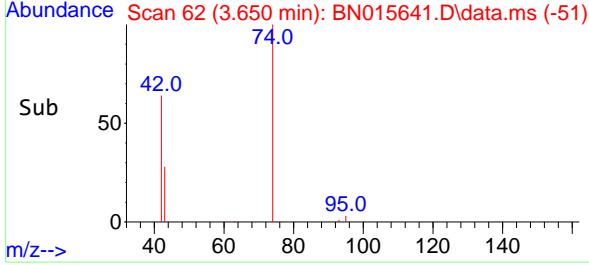
**Instrument :**  
 BNA\_N  
**ClientSampled :**  
 SSTDICC0.1



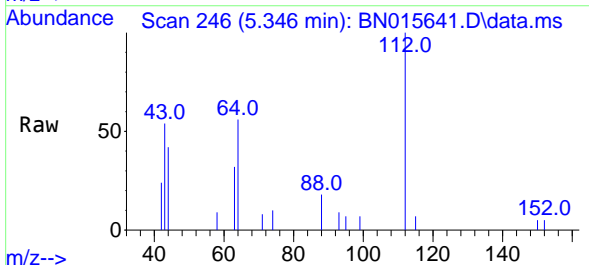
Tgt Ion: 42 Resp: 1007

Ion	Ratio	Lower	Upper
42	100		
74	157.6	123.8	185.8
44	8.8	5.9	8.9

**Manual Integrations**  
**APPROVED**  
 mohammad  
 7/22/2021 1:30:28 PM

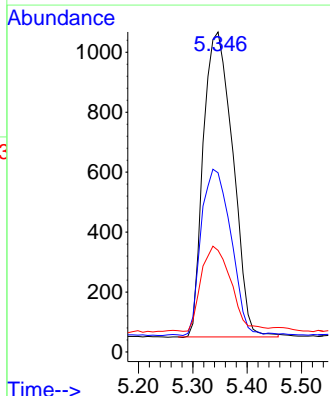
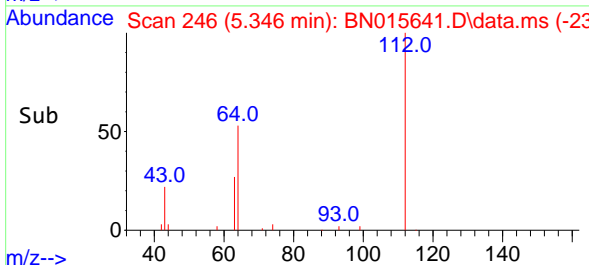


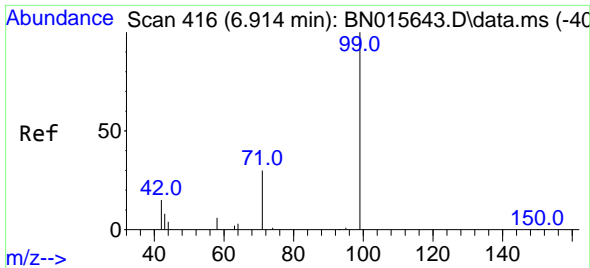
#4  
 2-Fluorophenol  
 Concen: 0.111 ng  
 RT: 5.346 min Scan# 246  
 Delta R.T. -0.000 min  
 Lab File: BN015641.D  
 Acq: 21 Jul 2021 12:19



Tgt Ion: 112 Resp: 3848

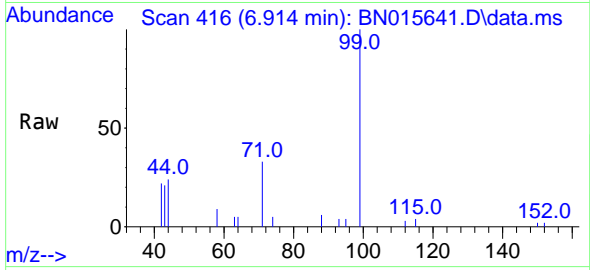
Ion	Ratio	Lower	Upper
112	100		
64	55.3	44.2	66.4
63	28.2	22.1	33.1





#5  
Phenol-d6  
Concen: 0.111 ng  
RT: 6.914 min Scan# 416  
Delta R.T. -0.000 min  
Lab File: BN015641.D  
Acq: 21 Jul 2021 12:19

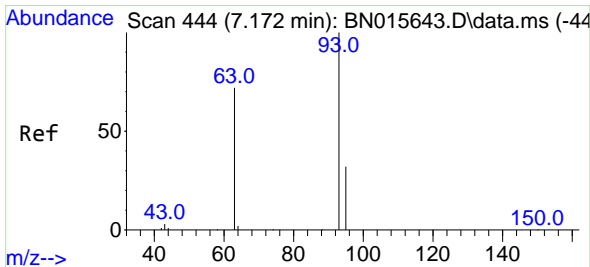
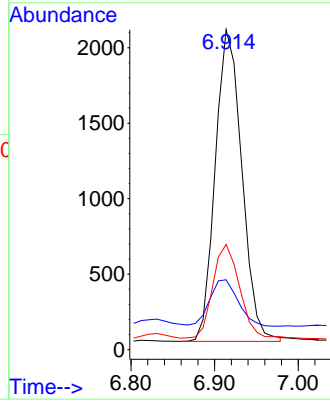
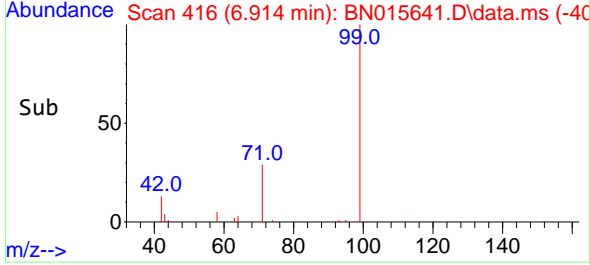
Instrument :  
BNA\_N  
ClientSampled :  
SSTDIC0.1



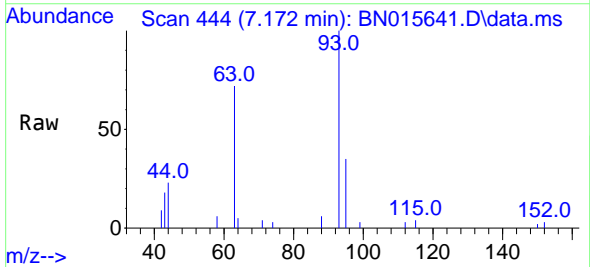
Tgt Ion: 99 Resp: 4558  
Ion Ratio Lower Upper  
99 100  
42 15.9 13.0 19.6  
71 29.9 24.4 36.6

Manual Integrations  
APPROVED

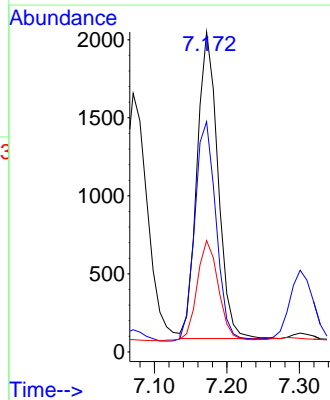
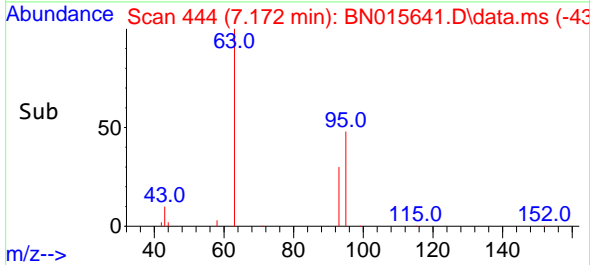
mohammad  
7/22/2021 1:30:28 PM

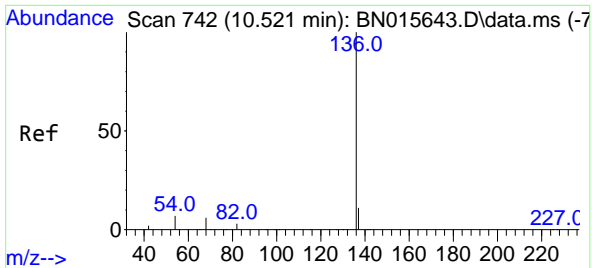


#6  
bis(2-Chloroethyl)ether  
Concen: 0.107 ng  
RT: 7.172 min Scan# 444  
Delta R.T. -0.000 min  
Lab File: BN015641.D  
Acq: 21 Jul 2021 12:19



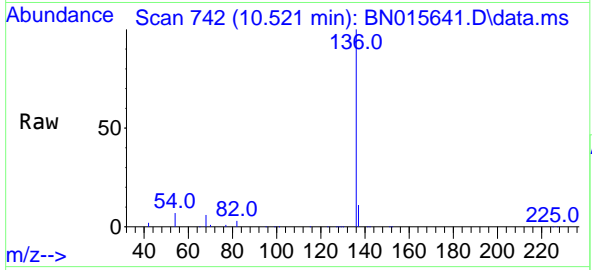
Tgt Ion: 93 Resp: 3934  
Ion Ratio Lower Upper  
93 100  
63 73.3 59.1 88.7  
95 33.8 26.3 39.5





#7  
 Naphthalene-d8  
 Concen: 0.400 ng  
 RT: 10.521 min Scan# 742  
 Delta R.T. -0.000 min  
 Lab File: BN015641.D  
 Acq: 21 Jul 2021 12:19

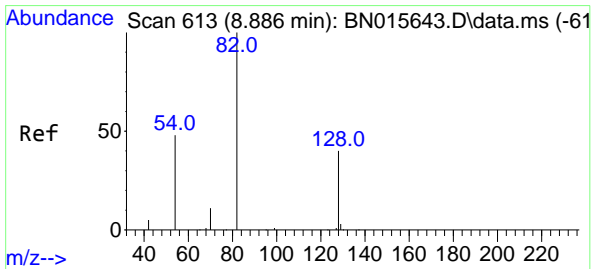
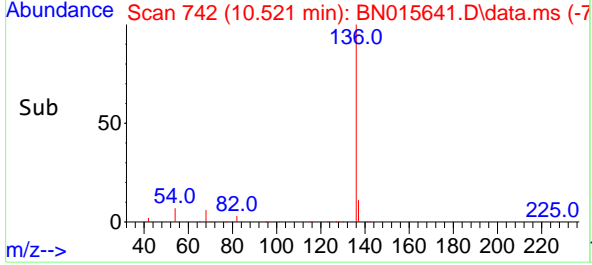
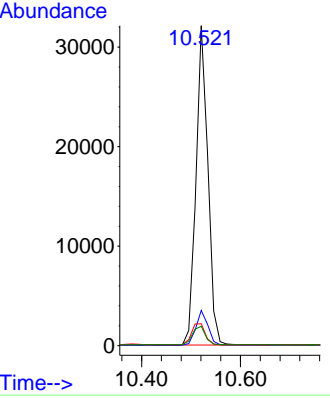
Instrument :  
 BNA\_N  
 ClientSampled :  
 SSTDICC0.1



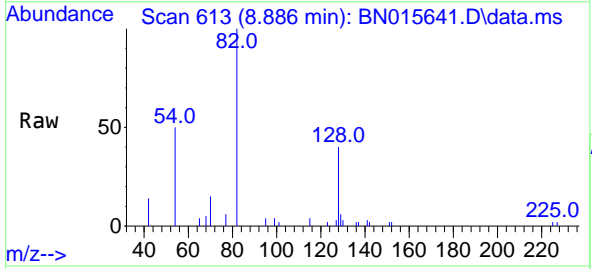
Tgt Ion: 136 Resp: 53976

Ion	Ratio	Lower	Upper
136	100		
137	11.0	8.8	13.2
54	6.9	5.7	8.5
68	6.0	4.8	7.2

Manual Integrations  
 APPROVED  
 mohammad  
 7/22/2021 1:30:28 PM

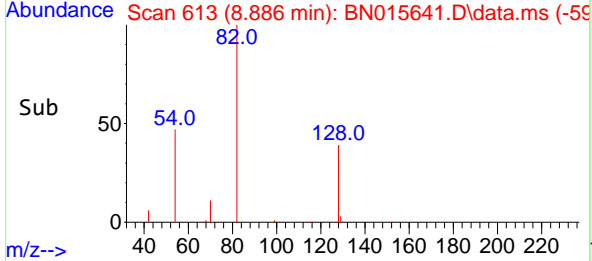
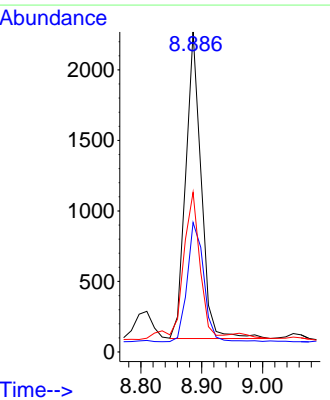


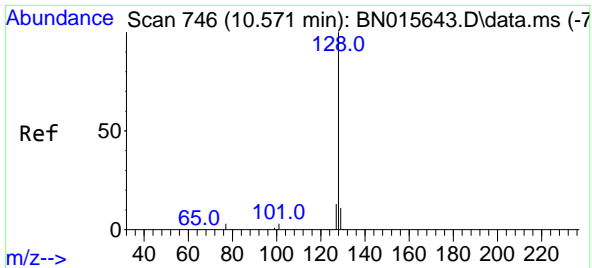
#8  
 Nitrobenzene-d5  
 Concen: 0.099 ng  
 RT: 8.886 min Scan# 613  
 Delta R.T. -0.000 min  
 Lab File: BN015641.D  
 Acq: 21 Jul 2021 12:19



Tgt Ion: 82 Resp: 3857

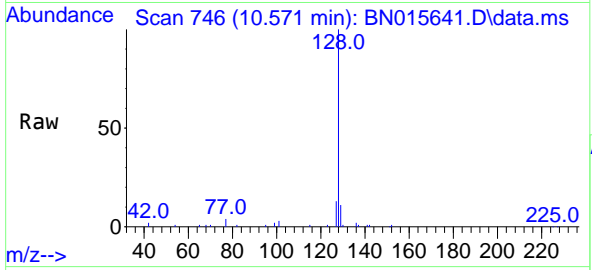
Ion	Ratio	Lower	Upper
82	100		
128	40.5	32.2	48.4
54	49.9	39.0	58.6





#9  
 Naphthalene  
 Concen: 0.111 ng  
 RT: 10.571 min Scan# 746  
 Delta R.T. -0.000 min  
 Lab File: BN015641.D  
 Acq: 21 Jul 2021 12:19

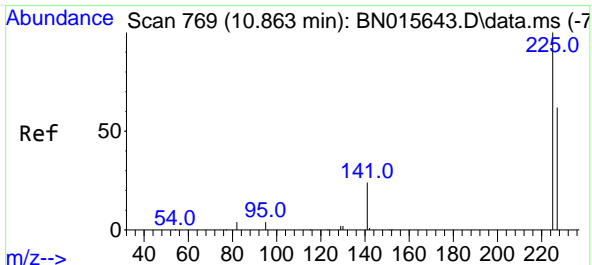
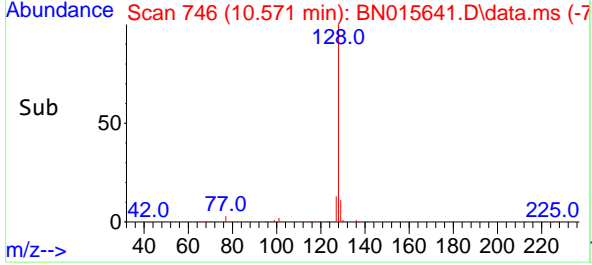
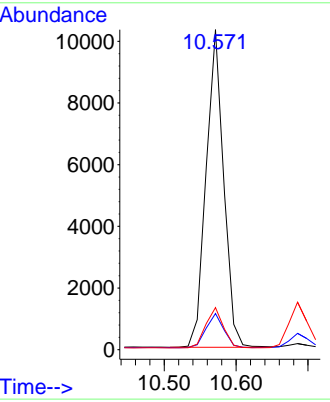
Instrument :  
 BNA\_N  
 ClientSampled :  
 SSTDICC0.1



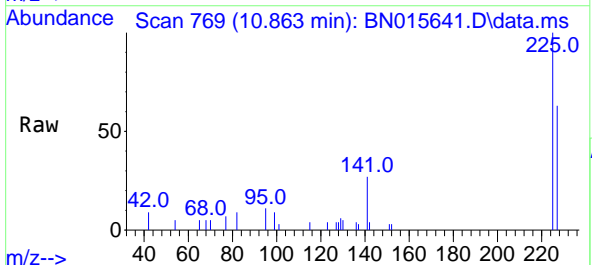
Tgt Ion:128 Resp: 17452

Ion	Ratio	Lower	Upper
128	100		
129	11.3	8.7	13.1
127	13.2	10.4	15.6

Manual Integrations  
 APPROVED  
 mohammad  
 7/22/2021 1:30:28 PM

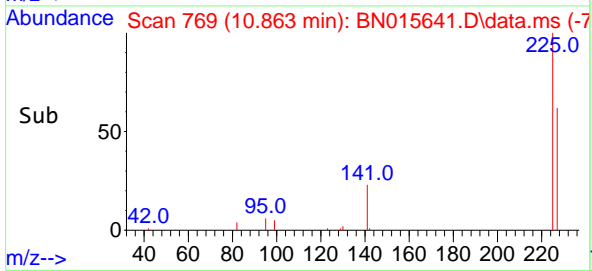
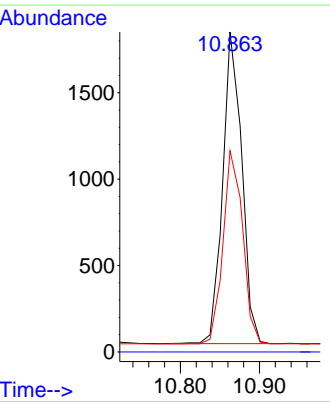


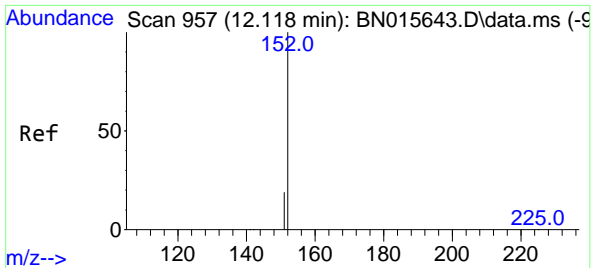
#10  
 Hexachlorobutadiene  
 Concen: 0.103 ng  
 RT: 10.863 min Scan# 769  
 Delta R.T. -0.000 min  
 Lab File: BN015641.D  
 Acq: 21 Jul 2021 12:19



Tgt Ion:225 Resp: 3026

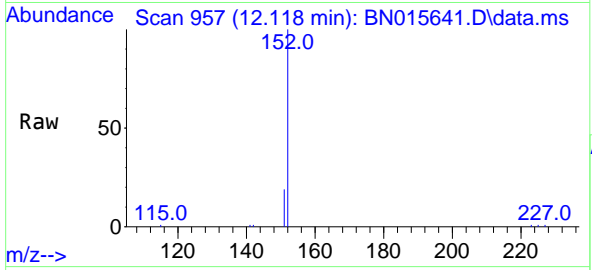
Ion	Ratio	Lower	Upper
225	100		
223	0.0	0.0	0.0
227	63.7	51.1	76.7





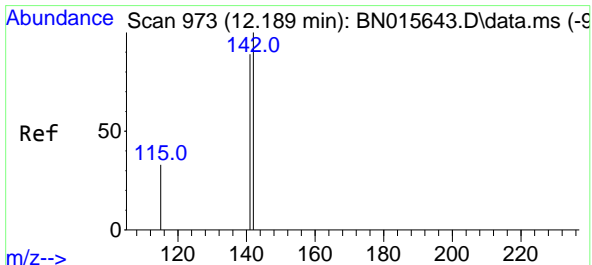
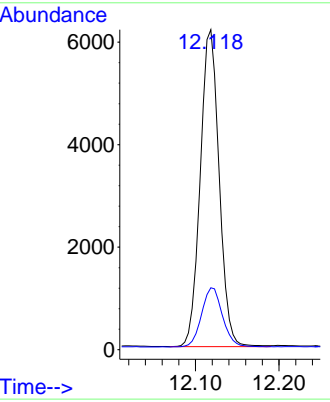
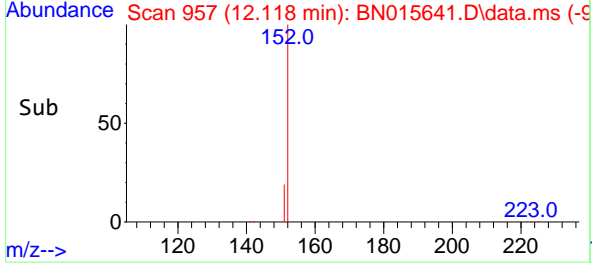
#11  
 2-Methylnaphthalene-d10  
 Concen: 0.109 ng  
 RT: 12.118 min Scan# 957  
 Delta R.T. -0.000 min  
 Lab File: BN015641.D  
 Acq: 21 Jul 2021 12:19

**Instrument :**  
 BNA\_N  
**ClientSampled :**  
 SSTDICC0.1

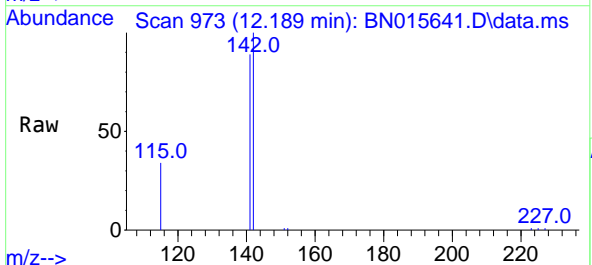


Tgt Ion:152 Resp: 9711  
 Ion Ratio Lower Upper  
 152 100  
 151 20.7 16.2 24.4

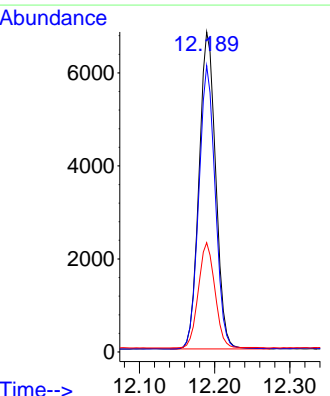
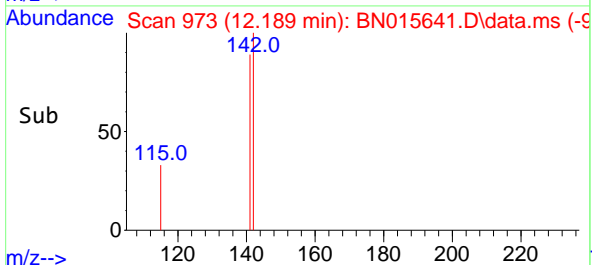
**Manual Integrations**  
**APPROVED**  
 mohammad  
 7/22/2021 1:30:28 PM



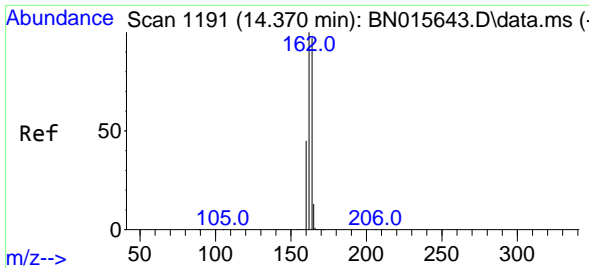
#12  
 2-Methylnaphthalene  
 Concen: 0.105 ng  
 RT: 12.189 min Scan# 973  
 Delta R.T. -0.000 min  
 Lab File: BN015641.D  
 Acq: 21 Jul 2021 12:19



Tgt Ion:142 Resp: 10477  
 Ion Ratio Lower Upper  
 142 100  
 141 89.5 71.1 106.7  
 115 34.1 26.8 40.2

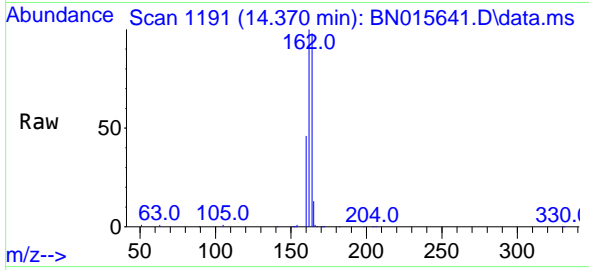






#13  
 Acenaphthene-d10  
 Concen: 0.400 ng  
 RT: 14.370 min Scan# 1191  
 Delta R.T. -0.000 min  
 Lab File: BN015641.D  
 Acq: 21 Jul 2021 12:19

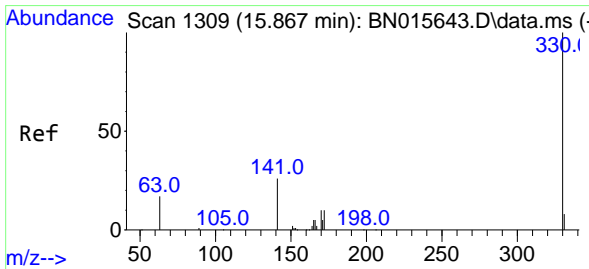
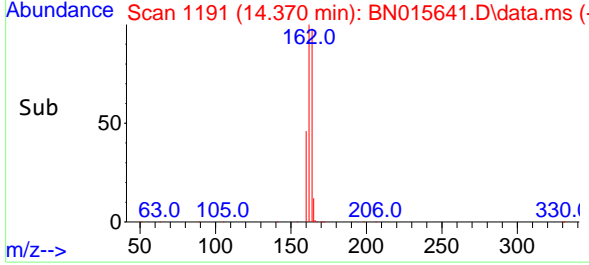
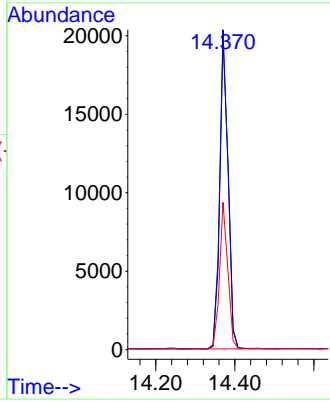
**Instrument :**  
 BNA\_N  
**ClientSampled :**  
 SSTDICC0.1



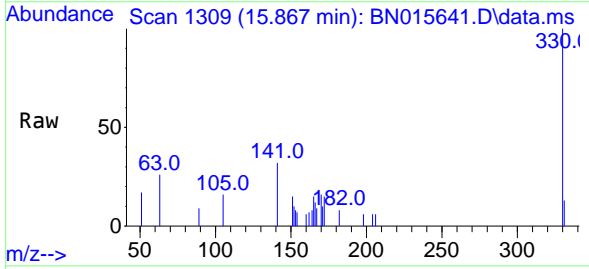
Tgt Ion:164 Resp: 29262

Ion	Ratio	Lower	Upper
164	100		
162	102.5	82.4	123.6
160	47.2	37.3	55.9

**Manual Integrations**  
**APPROVED**  
 mohammad  
 7/22/2021 1:30:28 PM

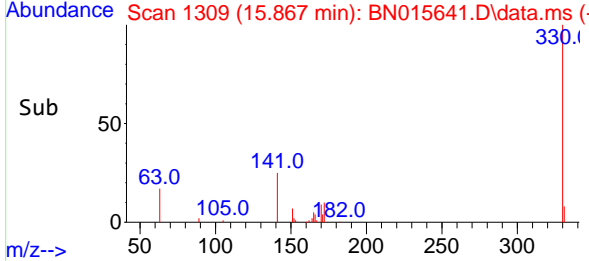
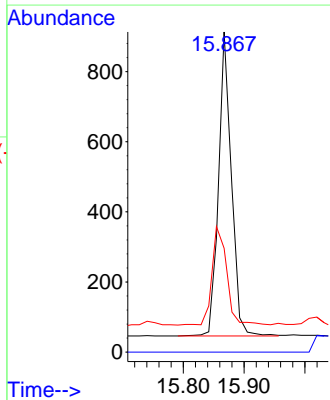


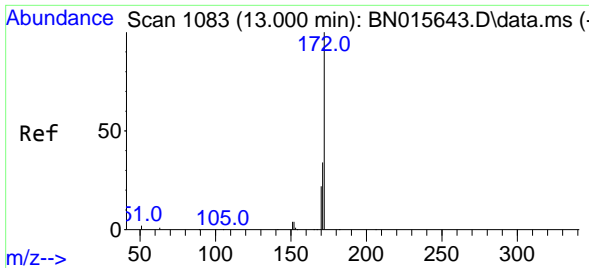
#14  
 2,4,6-Tribromophenol  
 Concen: 0.120 ng  
 RT: 15.867 min Scan# 1309  
 Delta R.T. -0.000 min  
 Lab File: BN015641.D  
 Acq: 21 Jul 2021 12:19



Tgt Ion:330 Resp: 1270

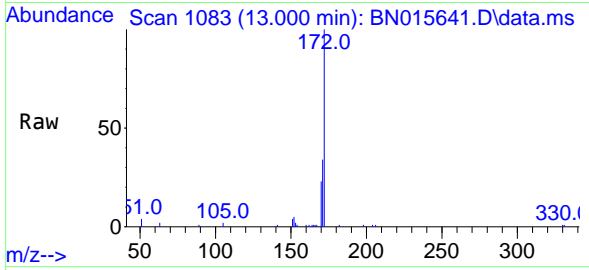
Ion	Ratio	Lower	Upper
330	100		
332	0.0	0.0	0.0
141	37.3	29.0	43.6





#15  
 2-Fluorobiphenyl  
 Concen: 0.101 ng  
 RT: 13.000 min Scan# 1083  
 Delta R.T. -0.000 min  
 Lab File: BN015641.D  
 Acq: 21 Jul 2021 12:19

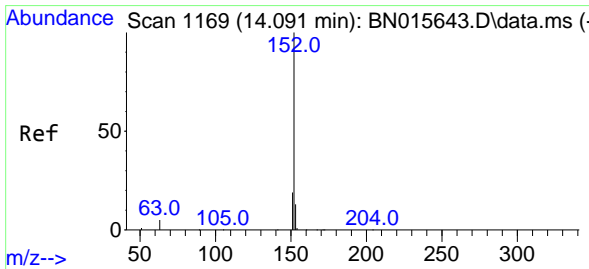
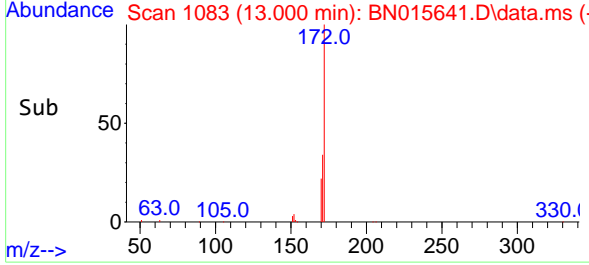
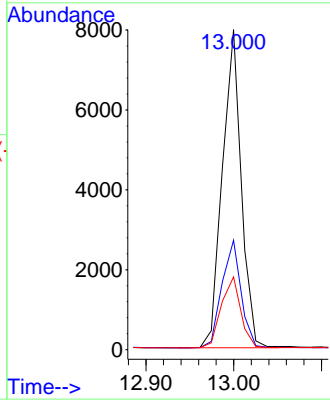
**Instrument :**  
 BNA\_N  
**ClientSampled :**  
 SSTDICC0.1



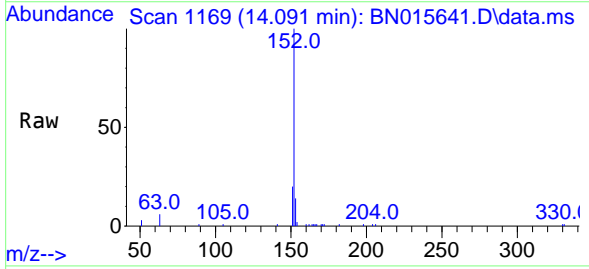
Tgt Ion:172 Resp: 11899

Ion	Ratio	Lower	Upper
172	100		
171	34.2	27.2	40.8
170	22.7	17.8	26.6

**Manual Integrations**  
**APPROVED**  
 mohammad  
 7/22/2021 1:30:28 PM

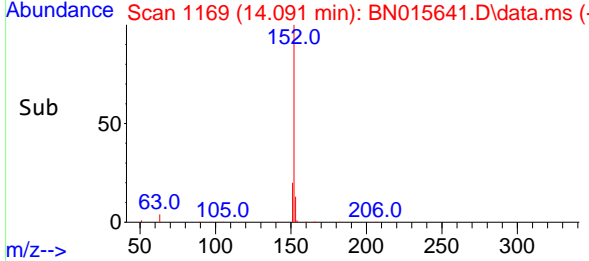
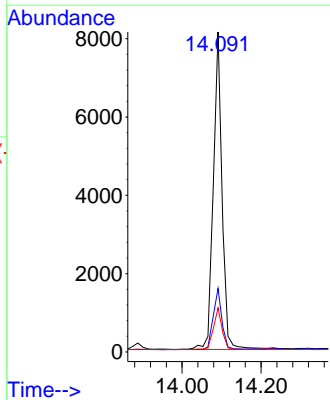


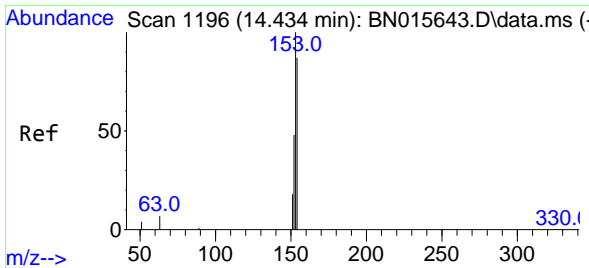
#16  
 Acenaphthylene  
 Concen: 0.093 ng  
 RT: 14.091 min Scan# 1169  
 Delta R.T. -0.000 min  
 Lab File: BN015641.D  
 Acq: 21 Jul 2021 12:19



Tgt Ion:152 Resp: 12604

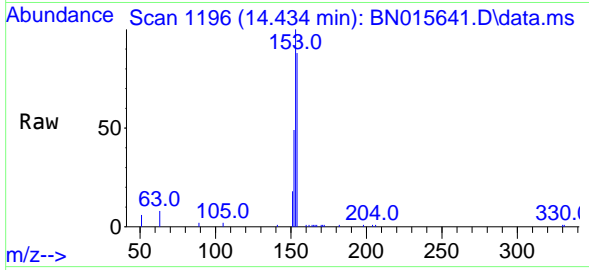
Ion	Ratio	Lower	Upper
152	100		
151	18.9	15.6	23.4
153	12.9	10.3	15.5





#17  
 Acenaphthene  
 Concen: 0.102 ng  
 RT: 14.434 min Scan# 1196  
 Delta R.T. -0.000 min  
 Lab File: BN015641.D  
 Acq: 21 Jul 2021 12:19

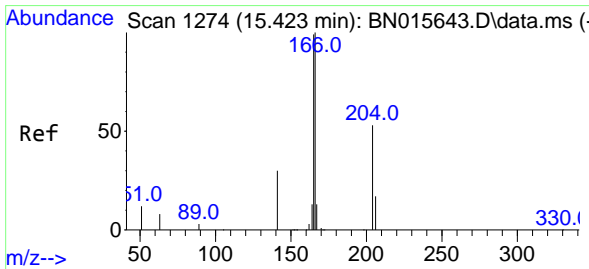
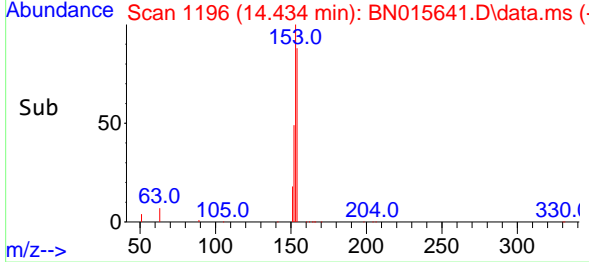
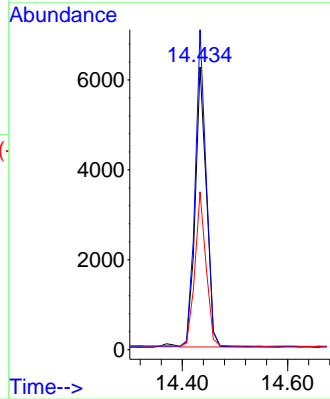
**Instrument :**  
 BNA\_N  
**ClientSampled :**  
 SSTDICC0.1



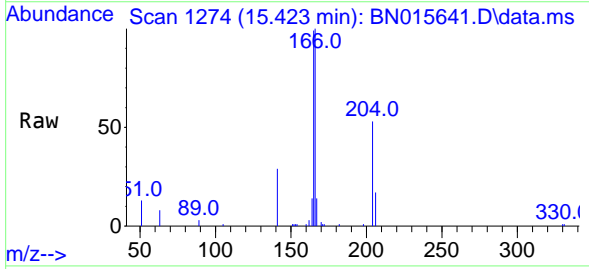
Tgt Ion:154 Resp: 9235

Ion	Ratio	Lower	Upper
154	100		
153	111.5	90.2	135.2
152	54.8	43.7	65.5

**Manual Integrations**  
**APPROVED**  
 mohammad  
 7/22/2021 1:30:28 PM

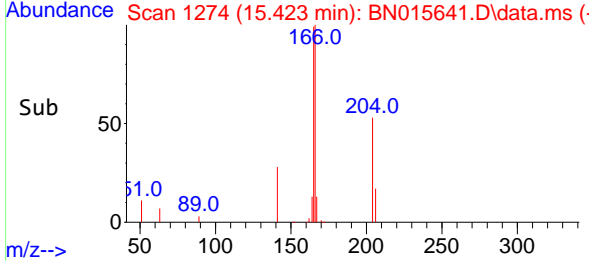
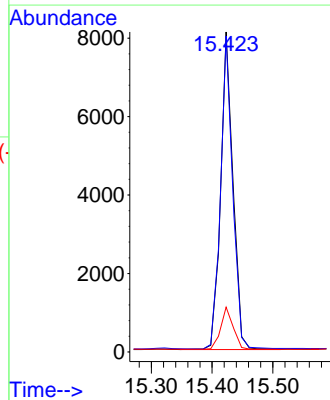


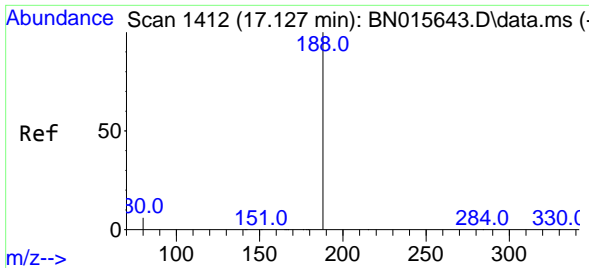
#18  
 Fluorene  
 Concen: 0.104 ng  
 RT: 15.423 min Scan# 1274  
 Delta R.T. -0.000 min  
 Lab File: BN015641.D  
 Acq: 21 Jul 2021 12:19



Tgt Ion:166 Resp: 11308

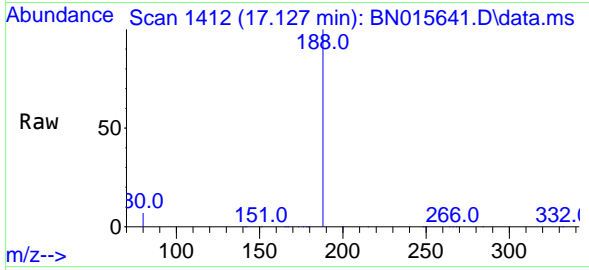
Ion	Ratio	Lower	Upper
166	100		
165	96.9	78.6	118.0
167	13.5	10.7	16.1





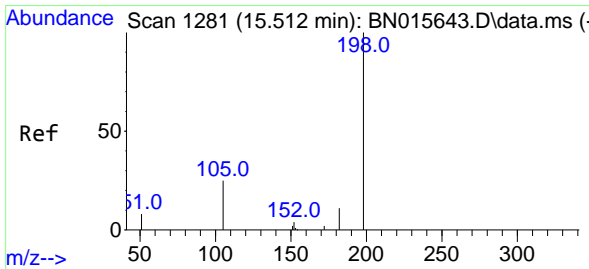
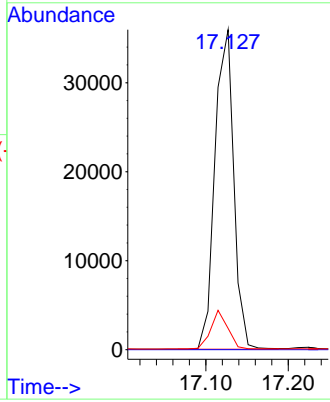
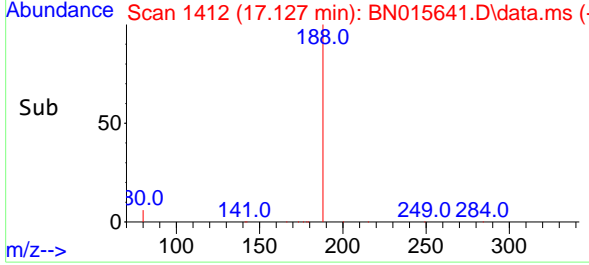
#19  
 Phenanthrene-d10  
 Concen: 0.400 ng  
 RT: 17.127 min Scan# 1412  
 Delta R.T. -0.000 min  
 Lab File: BN015641.D  
 Acq: 21 Jul 2021 12:19

**Instrument :**  
 BNA\_N  
**ClientSampled :**  
 SSTDICC0.1

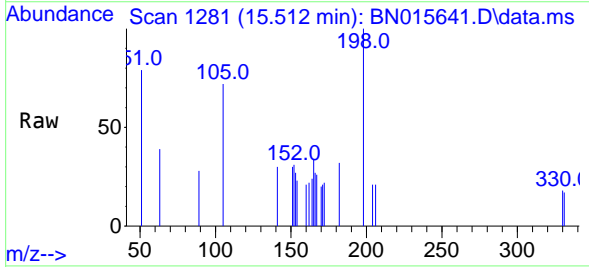


Tgt Ion:188 Resp: 56942  
 Ion Ratio Lower Upper  
 188 100  
 94 0.0 0.0 0.0  
 80 6.7 5.3 7.9

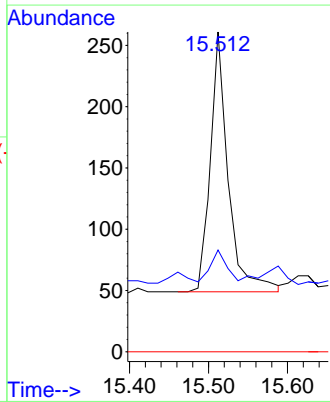
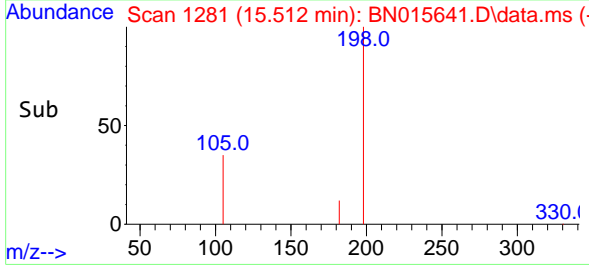
**Manual Integrations**  
**APPROVED**  
 mohammad  
 7/22/2021 1:30:28 PM

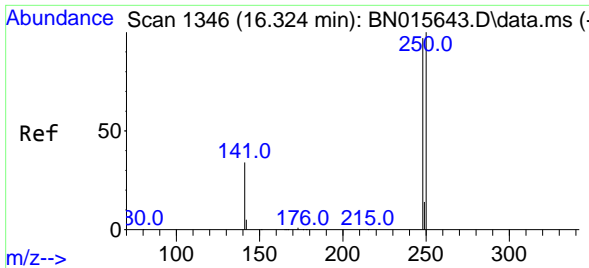


#20  
 4,6-Dinitro-2-methylphenol  
 Concen: 0.145 ng  
 RT: 15.512 min Scan# 1281  
 Delta R.T. -0.000 min  
 Lab File: BN015641.D  
 Acq: 21 Jul 2021 12:19



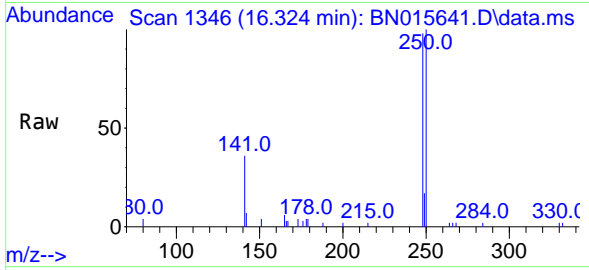
Tgt Ion:198 Resp: 333  
 Ion Ratio Lower Upper  
 198 100  
 182 31.8 14.0 21.0#  
 77 0.0 0.0 0.0





#21  
 4-Bromophenyl-phenylether  
 Concen: 0.099 ng  
 RT: 16.324 min Scan# 1346  
 Delta R.T. -0.000 min  
 Lab File: BN015641.D  
 Acq: 21 Jul 2021 12:19

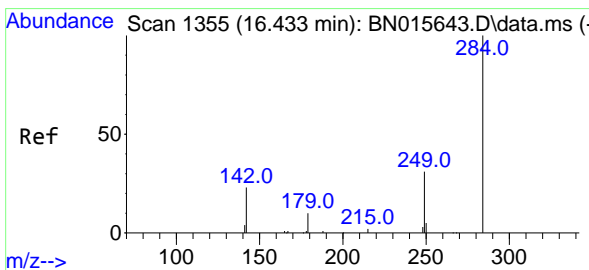
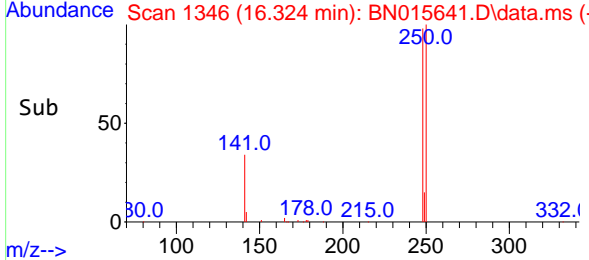
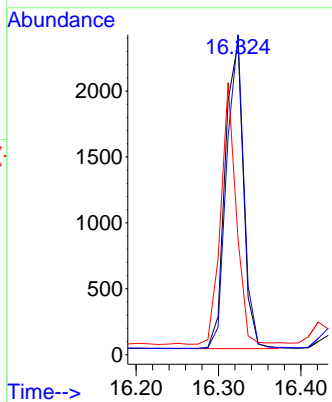
**Instrument :**  
 BNA\_N  
**ClientSampled :**  
 SSTDICC0.1



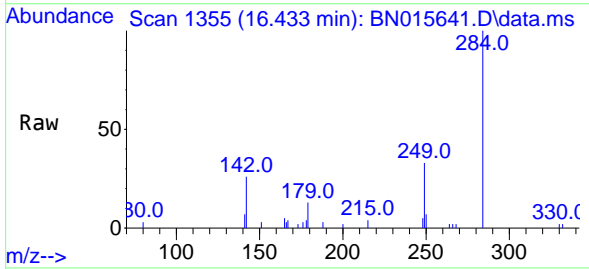
Tgt Ion: 248 Resp: 3582

Ion	Ratio	Lower	Upper
248	100		
250	102.5	82.1	123.1
141	37.0	28.5	42.7

**Manual Integrations**  
**APPROVED**  
 mohammad  
 7/22/2021 1:30:28 PM

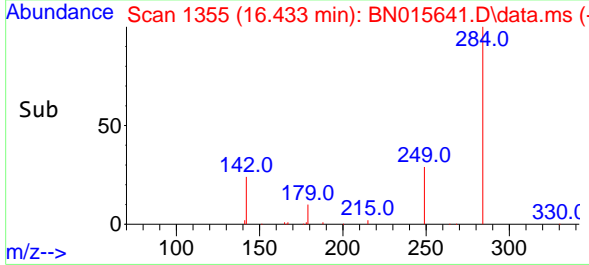
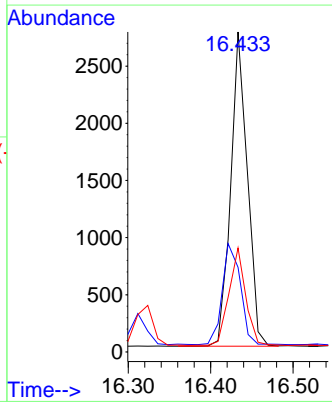


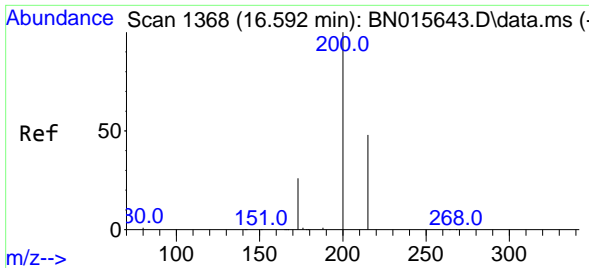
#22  
 Hexachlorobenzene  
 Concen: 0.095 ng  
 RT: 16.433 min Scan# 1355  
 Delta R.T. -0.000 min  
 Lab File: BN015641.D  
 Acq: 21 Jul 2021 12:19



Tgt Ion: 284 Resp: 3876

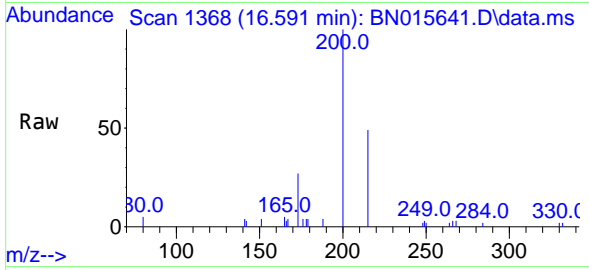
Ion	Ratio	Lower	Upper
284	100		
142	34.5	27.1	40.7
249	31.1	24.7	37.1





#23  
 Atrazine  
 Concen: 0.100 ng  
 RT: 16.591 min Scan# 1368  
 Delta R.T. -0.000 min  
 Lab File: BN015641.D  
 Acq: 21 Jul 2021 12:19

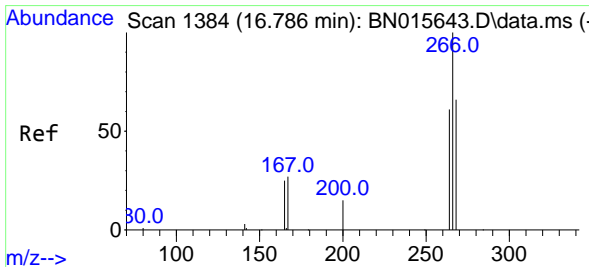
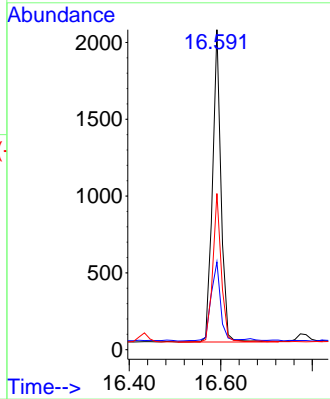
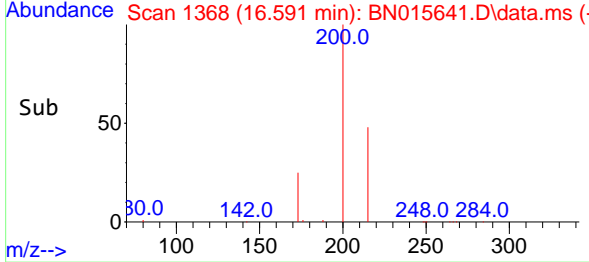
**Instrument :**  
 BNA\_N  
**ClientSampled :**  
 SSTDICC0.1



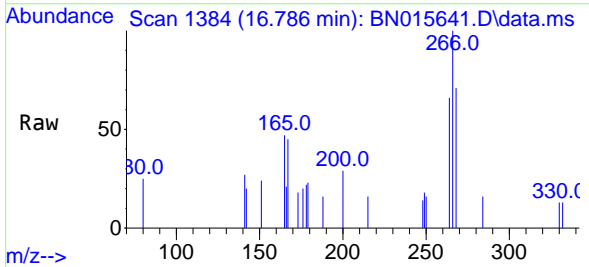
Tgt Ion: 200 Resp: 2619

Ion	Ratio	Lower	Upper
200	100		
173	27.4	21.2	31.8
215	48.8	38.8	58.2

**Manual Integrations**  
**APPROVED**  
 mohammad  
 7/22/2021 1:30:28 PM

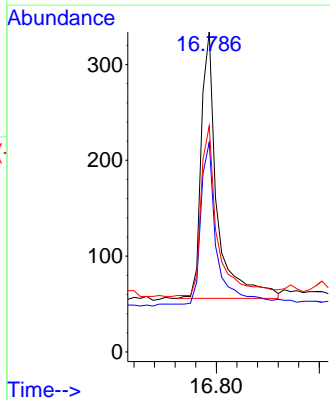
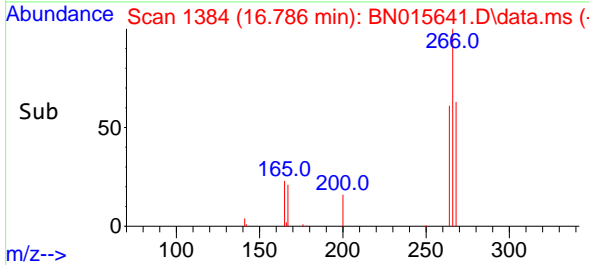


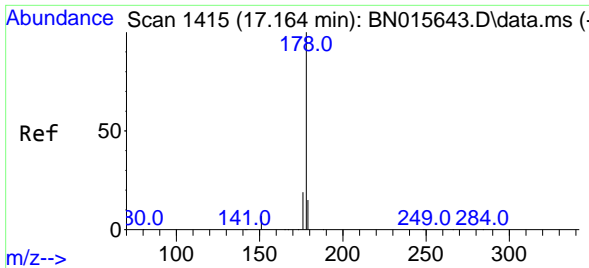
#24  
 Pentachlorophenol  
 Concen: 0.069 ng  
 RT: 16.786 min Scan# 1384  
 Delta R.T. -0.000 min  
 Lab File: BN015641.D  
 Acq: 21 Jul 2021 12:19



Tgt Ion: 266 Resp: 598

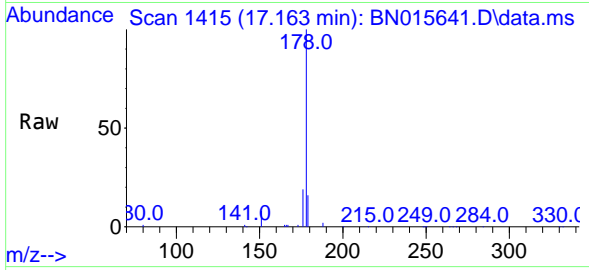
Ion	Ratio	Lower	Upper
266	100		
264	61.4	50.2	75.4
268	67.6	51.6	77.4





#25  
 Phenanthrene  
 Concen: 0.101 ng  
 RT: 17.163 min Scan# 1415  
 Delta R.T. -0.000 min  
 Lab File: BN015641.D  
 Acq: 21 Jul 2021 12:19

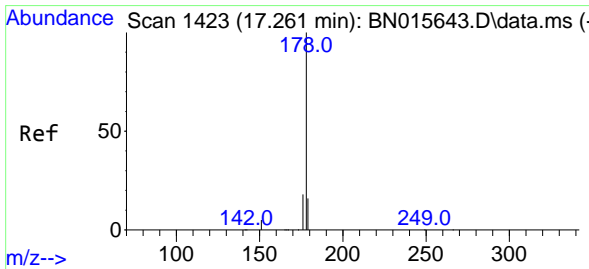
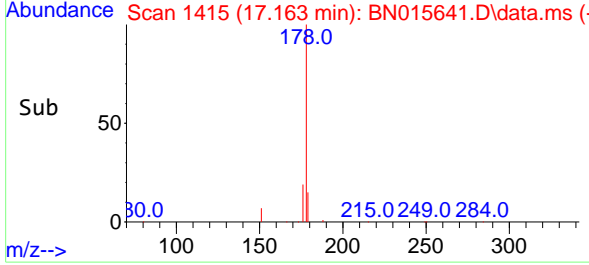
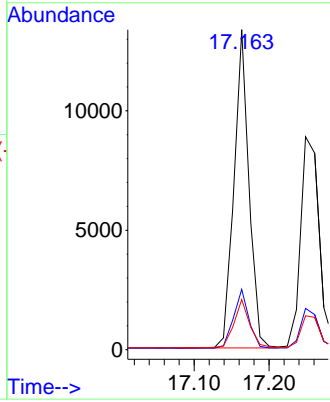
**Instrument :**  
 BNA\_N  
**ClientSampled :**  
 SSTDICC0.1



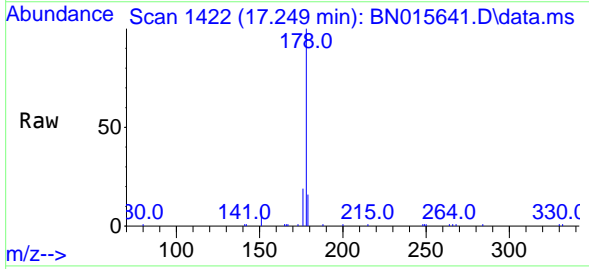
Tgt Ion:178 Resp: 18507

Ion	Ratio	Lower	Upper
178	100		
176	18.8	15.0	22.6
179	16.0	12.3	18.5

**Manual Integrations**  
**APPROVED**  
 mohammad  
 7/22/2021 1:30:28 PM

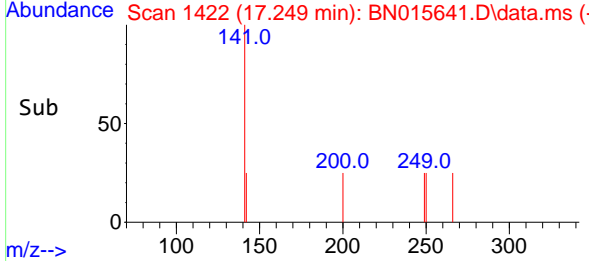
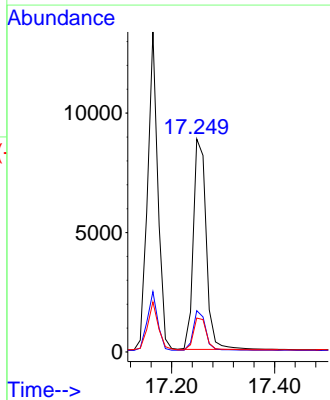


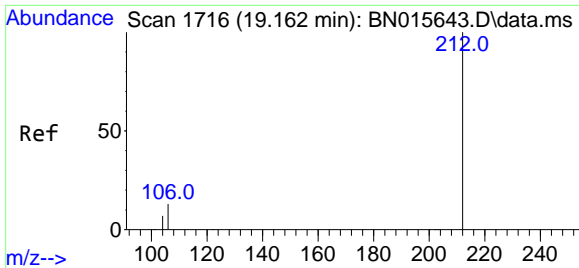
#26  
 Anthracene  
 Concen: 0.097 ng  
 RT: 17.249 min Scan# 1422  
 Delta R.T. -0.012 min  
 Lab File: BN015641.D  
 Acq: 21 Jul 2021 12:19



Tgt Ion:178 Resp: 15353

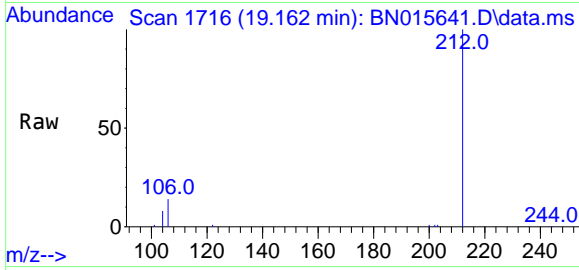
Ion	Ratio	Lower	Upper
178	100		
176	18.1	14.5	21.7
179	15.3	12.2	18.4





#27  
 Fluoranthene-d10  
 Concen: 0.111 ng  
 RT: 19.162 min Scan# 1716  
 Delta R.T. -0.000 min  
 Lab File: BN015641.D  
 Acq: 21 Jul 2021 12:19

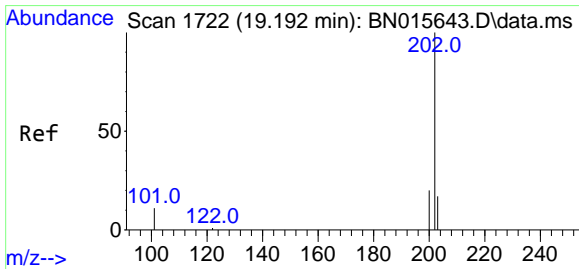
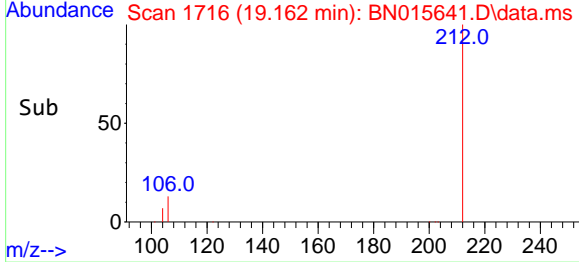
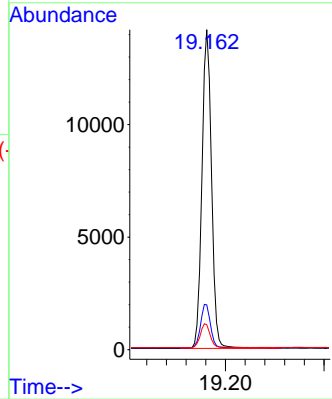
**Instrument :**  
 BNA\_N  
**ClientSampled :**  
 SSTDICC0.1



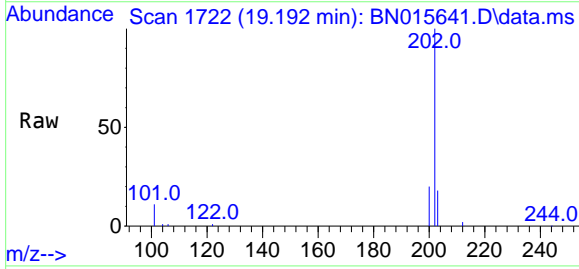
Tgt Ion:212 Resp: 19169

Ion	Ratio	Lower	Upper
212	100		
106	13.9	11.3	16.9
104	7.8	6.1	9.1

**Manual Integrations**  
**APPROVED**  
 mohammad  
 7/22/2021 1:30:28 PM

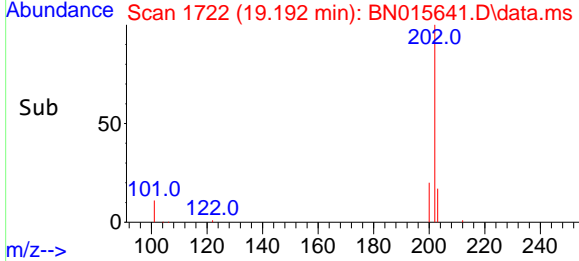
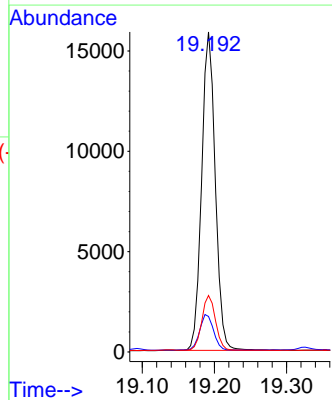


#28  
 Fluoranthene  
 Concen: 0.104 ng  
 RT: 19.192 min Scan# 1722  
 Delta R.T. -0.000 min  
 Lab File: BN015641.D  
 Acq: 21 Jul 2021 12:19

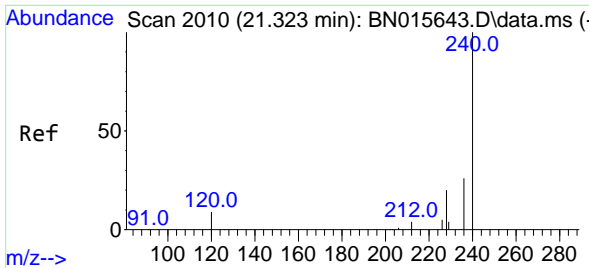


Tgt Ion:202 Resp: 20808

Ion	Ratio	Lower	Upper
202	100		
101	11.4	9.3	13.9
203	17.3	13.8	20.6

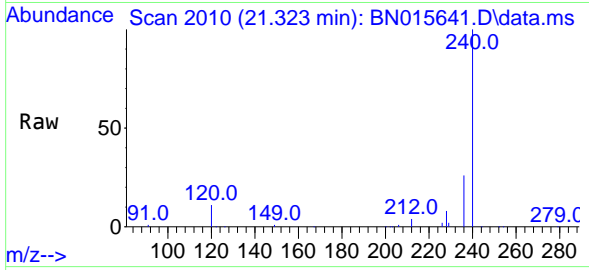






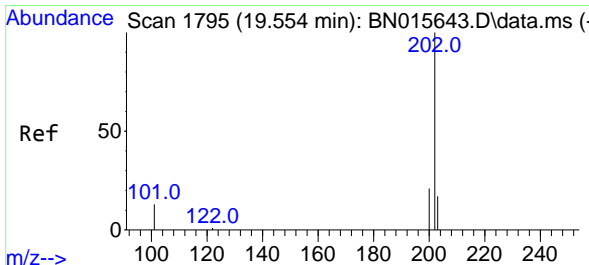
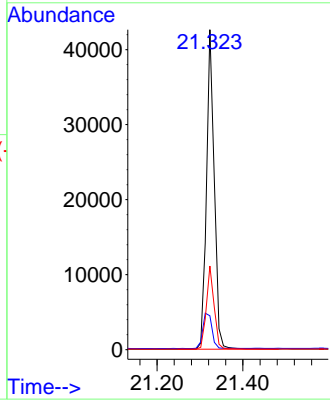
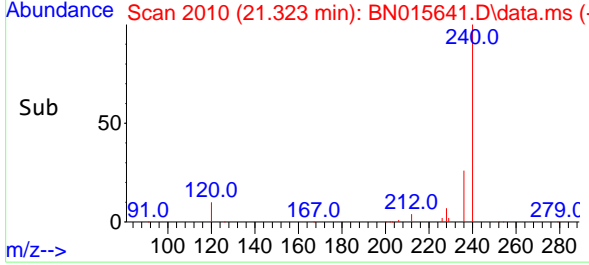
#29  
 Chrysene-d12  
 Concen: 0.400 ng  
 RT: 21.323 min Scan# 2010  
 Delta R.T. -0.000 min  
 Lab File: BN015641.D  
 Acq: 21 Jul 2021 12:19

**Instrument :**  
 BNA\_N  
**ClientSampleId :**  
 SSTDICC0.1

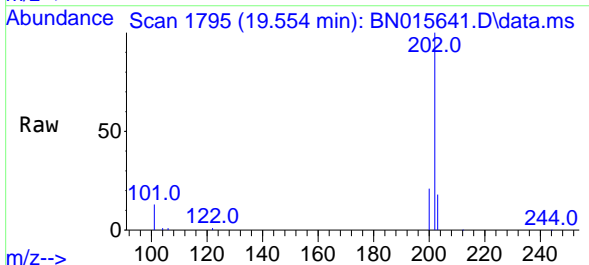


Tgt Ion:240 Resp: 53623  
 Ion Ratio Lower Upper  
 240 100  
 120 10.6 7.1 10.7  
 236 26.1 20.7 31.1

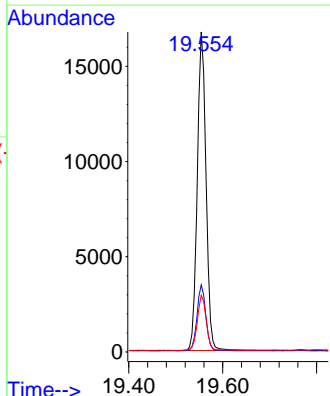
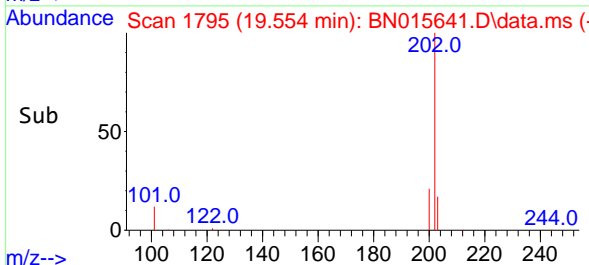
**Manual Integrations**  
**APPROVED**  
 mohammad  
 7/22/2021 1:30:28 PM

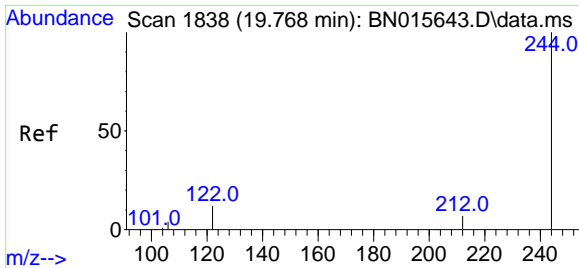


#30  
 Pyrene  
 Concen: 0.105 ng  
 RT: 19.554 min Scan# 1795  
 Delta R.T. -0.000 min  
 Lab File: BN015641.D  
 Acq: 21 Jul 2021 12:19



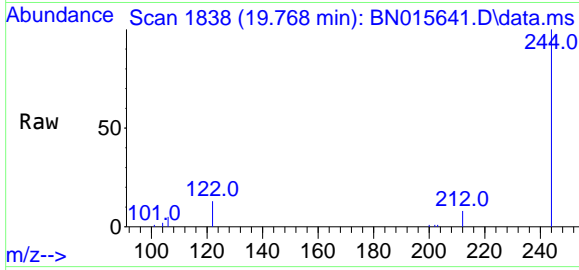
Tgt Ion:202 Resp: 21646  
 Ion Ratio Lower Upper  
 202 100  
 200 20.6 16.4 24.6  
 203 17.5 13.9 20.9





#31  
 Terphenyl-d14  
 Concen: 0.104 ng  
 RT: 19.768 min Scan# 1838  
 Delta R.T. -0.000 min  
 Lab File: BN015641.D  
 Acq: 21 Jul 2021 12:19

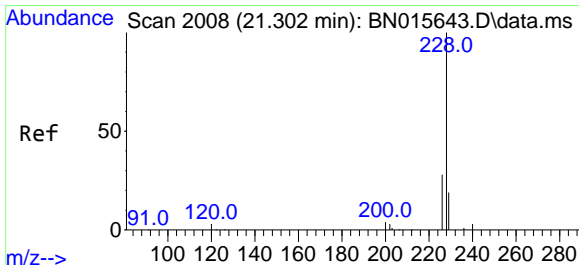
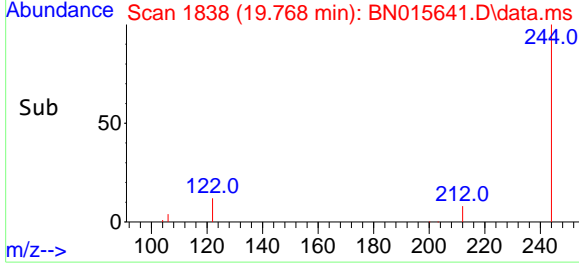
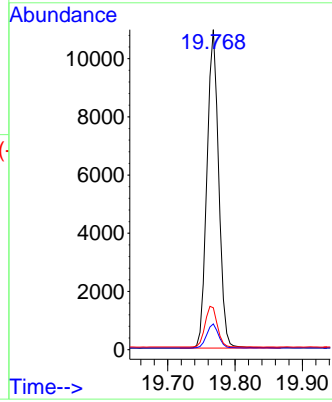
**Instrument :**  
 BNA\_N  
**ClientSampled :**  
 SSTDICC0.1



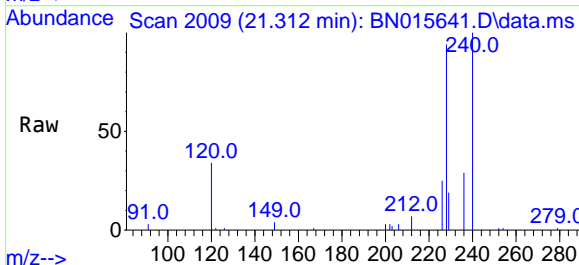
Tgt Ion:244 Resp: 13222

Ion	Ratio	Lower	Upper
244	100		
212	8.1	6.1	9.1
122	13.1	9.4	14.2

**Manual Integrations**  
**APPROVED**  
 mohammad  
 7/22/2021 1:30:28 PM

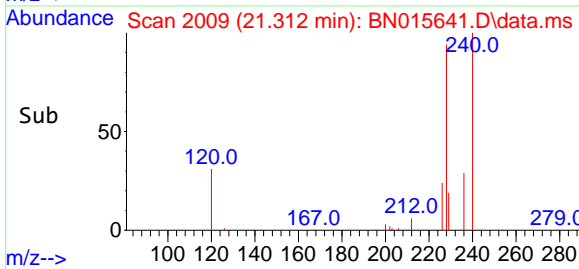
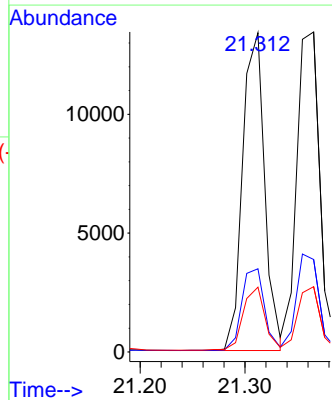


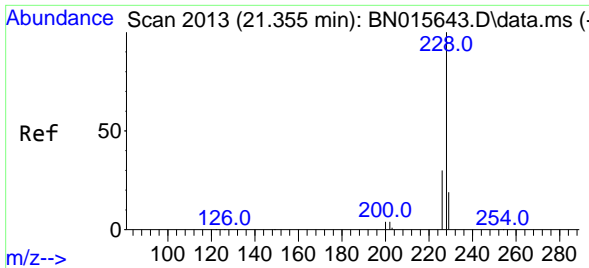
#32  
 Benzo(a)anthracene  
 Concen: 0.104 ng  
 RT: 21.312 min Scan# 2009  
 Delta R.T. 0.010 min  
 Lab File: BN015641.D  
 Acq: 21 Jul 2021 12:19



Tgt Ion:228 Resp: 19511

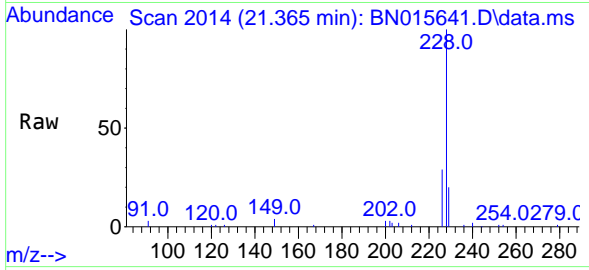
Ion	Ratio	Lower	Upper
228	100		
226	26.1	22.1	33.1
229	20.3	15.3	22.9





#33  
 Chrysene  
 Concen: 0.101 ng  
 RT: 21.365 min Scan# 2014  
 Delta R.T. 0.011 min  
 Lab File: BN015641.D  
 Acq: 21 Jul 2021 12:19

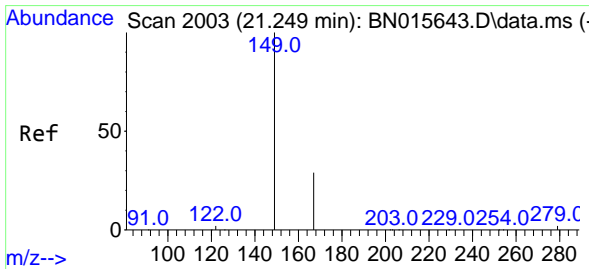
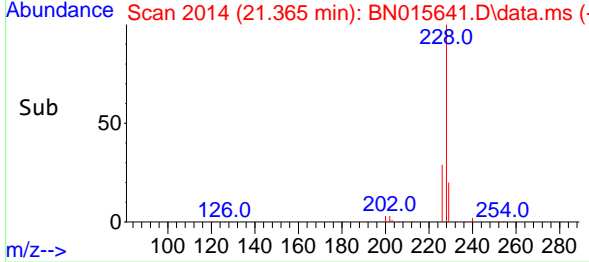
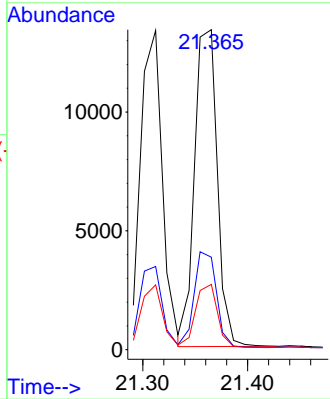
**Instrument :**  
 BNA\_N  
**ClientSampled :**  
 SSTDICC0.1



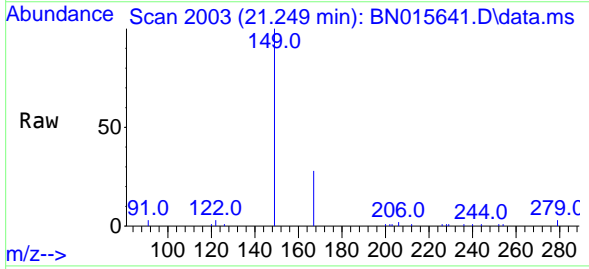
Tgt Ion: 228 Resp: 20099

Ion	Ratio	Lower	Upper
228	100		
226	28.9	24.3	36.5
229	20.4	15.5	23.3

**Manual Integrations**  
**APPROVED**  
 mohammad  
 7/22/2021 1:30:28 PM

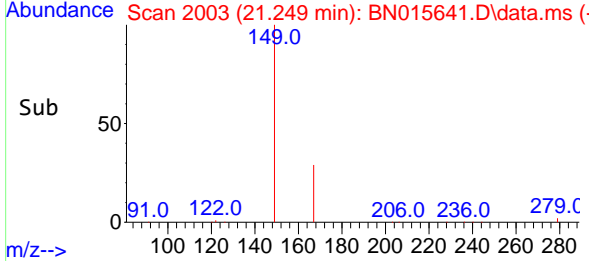
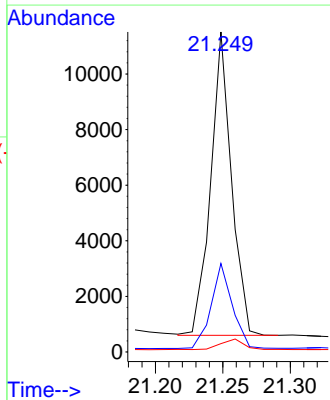


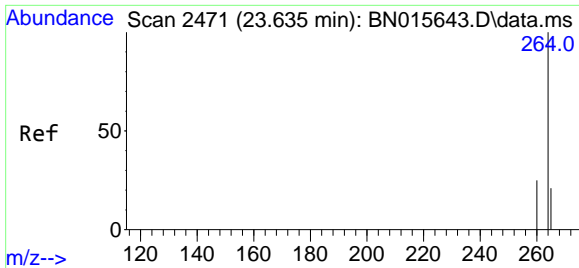
#34  
 Bis(2-ethylhexyl)phthalate  
 Concen: 0.146 ng  
 RT: 21.249 min Scan# 2003  
 Delta R.T. -0.000 min  
 Lab File: BN015641.D  
 Acq: 21 Jul 2021 12:19



Tgt Ion: 149 Resp: 11697

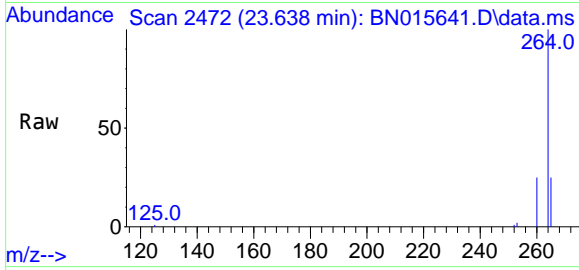
Ion	Ratio	Lower	Upper
149	100		
167	28.5	23.0	34.4
279	4.0	2.9	4.3





#35  
 Perylene-d12  
 Concen: 0.400 ng  
 RT: 23.638 min Scan# 2472  
 Delta R.T. 0.003 min  
 Lab File: BN015641.D  
 Acq: 21 Jul 2021 12:19

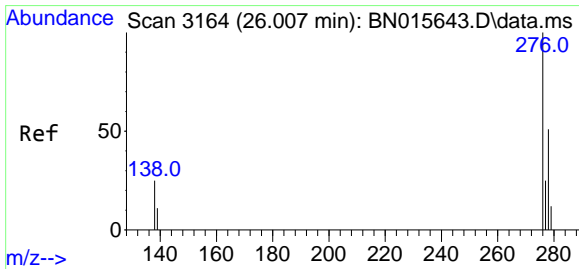
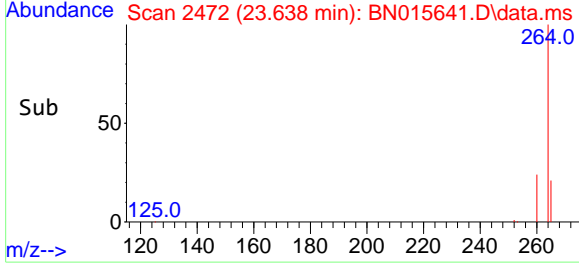
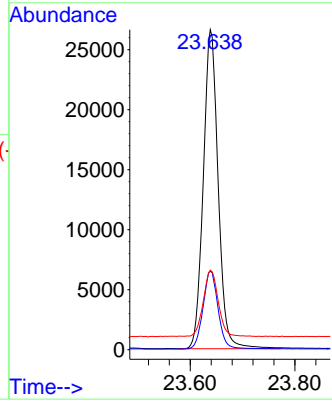
**Instrument :**  
 BNA\_N  
**ClientSampled :**  
 SSTDICC0.1



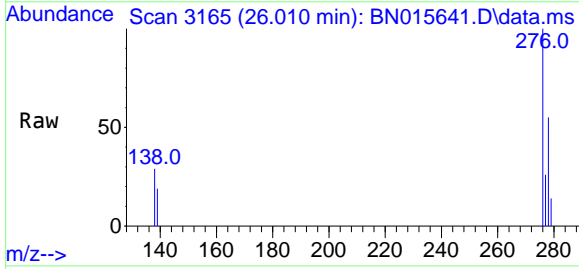
Tgt Ion: 264 Resp: 52571

Ion	Ratio	Lower	Upper
264	100		
260	24.6	19.7	29.5
265	24.9	20.0	30.0

**Manual Integrations**  
**APPROVED**  
 mohammad  
 7/22/2021 1:30:28 PM

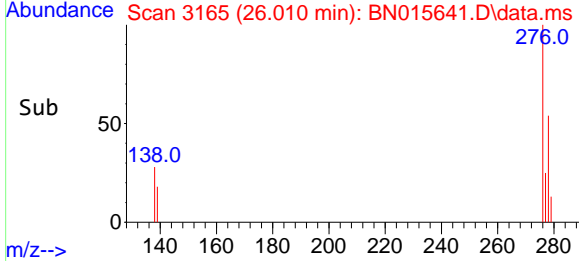
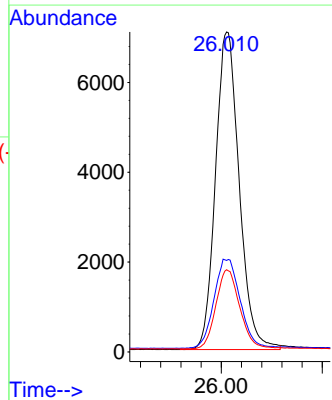


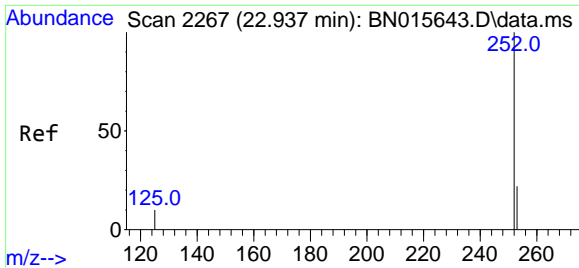
#36  
 Indeno(1,2,3-cd)pyrene  
 Concen: 0.123 ng  
 RT: 26.010 min Scan# 3165  
 Delta R.T. 0.003 min  
 Lab File: BN015641.D  
 Acq: 21 Jul 2021 12:19



Tgt Ion: 276 Resp: 23021

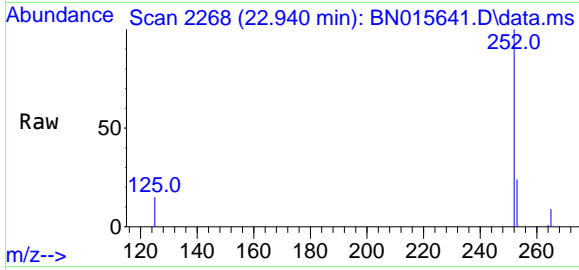
Ion	Ratio	Lower	Upper
276	100		
138	31.0	21.8	32.6
277	25.2	20.0	30.0





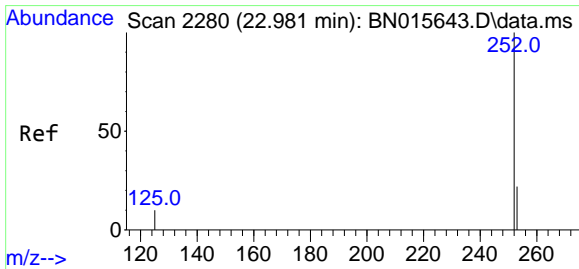
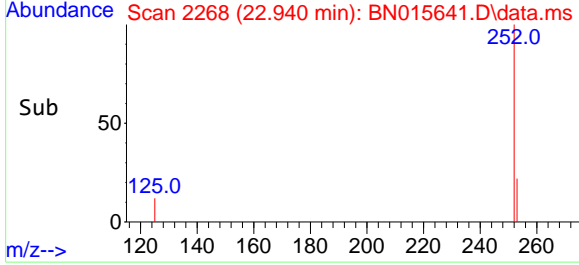
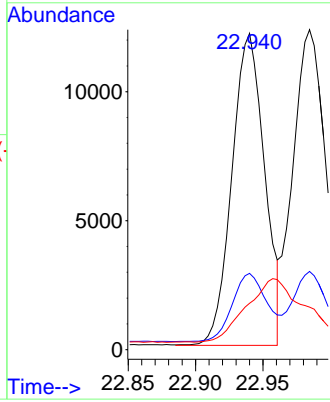
#37  
 Benzo(b)fluoranthene  
 Concen: 0.099 ng m  
 RT: 22.940 min Scan# 2268  
 Delta R.T. 0.003 min  
 Lab File: BN015641.D  
 Acq: 21 Jul 2021 12:19

**Instrument :**  
 BNA\_N  
**ClientSampled :**  
 SSTDICC0.1

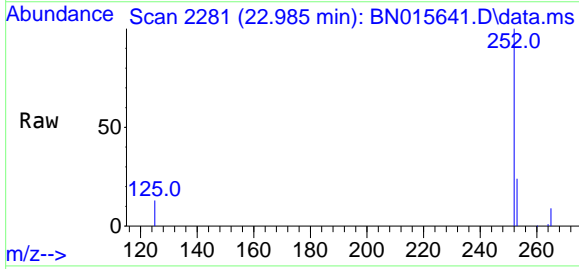


Tgt Ion:252 Resp: 20361  
 Ion Ratio Lower Upper  
 252 100  
 253 24.1 17.8 26.8  
 125 14.7 8.9 13.3#

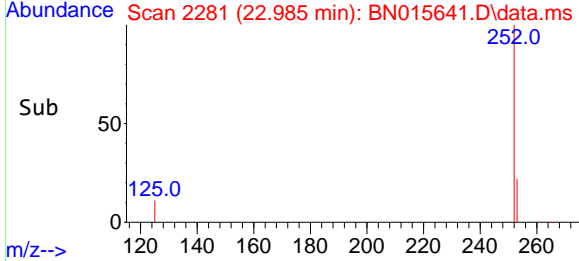
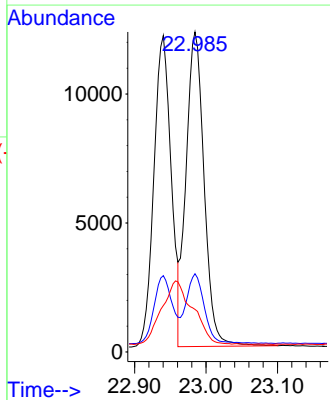
**Manual Integrations**  
**APPROVED**  
 mohammad  
 7/22/2021 1:30:28 PM

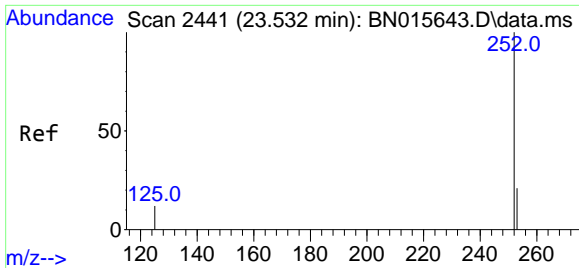


#38  
 Benzo(k)fluoranthene  
 Concen: 0.103 ng  
 RT: 22.985 min Scan# 2281  
 Delta R.T. 0.003 min  
 Lab File: BN015641.D  
 Acq: 21 Jul 2021 12:19



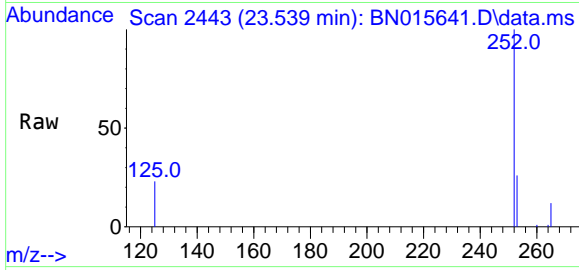
Tgt Ion:252 Resp: 21382  
 Ion Ratio Lower Upper  
 252 100  
 253 24.5 17.8 26.6  
 125 13.3 8.9 13.3





#39  
 Benzo(a)pyrene  
 Concen: 0.102 ng  
 RT: 23.539 min Scan# 2443  
 Delta R.T. 0.007 min  
 Lab File: BN015641.D  
 Acq: 21 Jul 2021 12:19

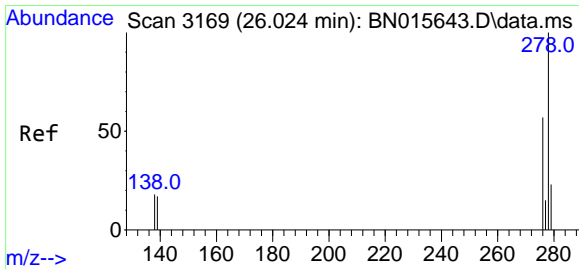
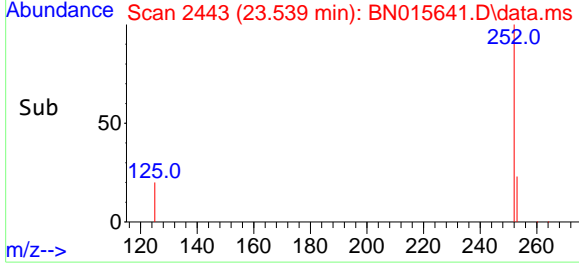
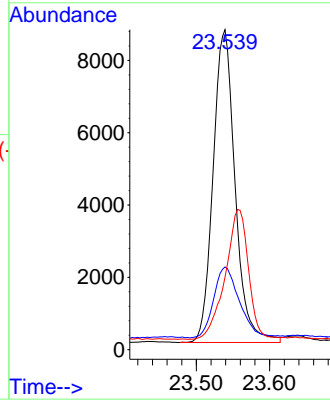
**Instrument :**  
 BNA\_N  
**ClientSampled :**  
 SSTDICC0.1



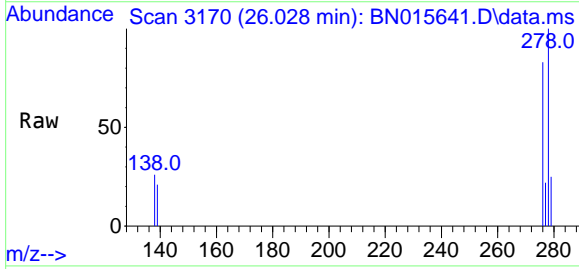
Tgt Ion:252 Resp: 18029

Ion	Ratio	Lower	Upper
252	100		
253	25.9	17.6	26.4
125	22.6	10.1	15.1#

**Manual Integrations**  
**APPROVED**  
 mohammad  
 7/22/2021 1:30:28 PM

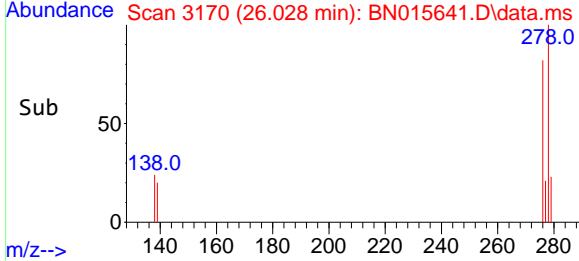
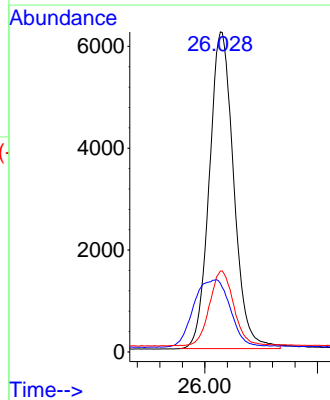


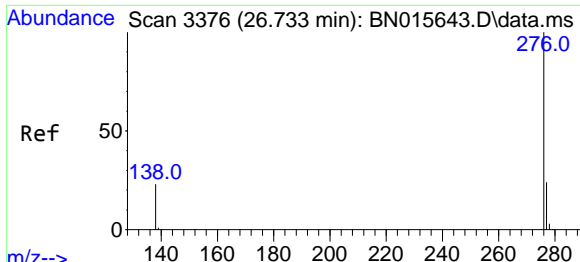
#40  
 Dibenzo(a,h)anthracene  
 Concen: 0.127 ng  
 RT: 26.028 min Scan# 3170  
 Delta R.T. 0.003 min  
 Lab File: BN015641.D  
 Acq: 21 Jul 2021 12:19



Tgt Ion:278 Resp: 18685

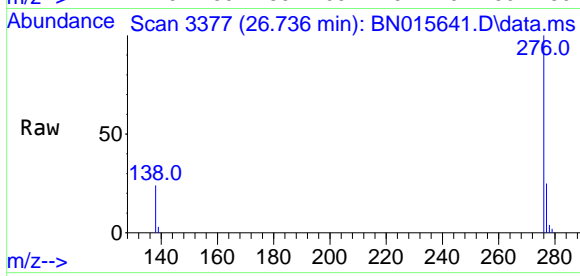
Ion	Ratio	Lower	Upper
278	100		
139	21.5	14.7	22.1
279	25.3	19.0	28.6





#41  
 Benzo(g,h,i)perylene  
 Concen: 0.120 ng  
 RT: 26.736 min Scan# 3377  
 Delta R.T. 0.003 min  
 Lab File: BN015641.D  
 Acq: 21 Jul 2021 12:19

**Instrument :**  
 BNA\_N  
**ClientSampled :**  
 SSTDICC0.1



Tgt Ion: 276 Resp: 19124

Ion	Ratio	Lower	Upper
276	100		
277	24.7	19.0	28.6
138	24.1	18.5	27.7

**Manual Integrations**  
**APPROVED**  
 mohammad  
 7/22/2021 1:30:28 PM

