

Data Path : Z:\svoasrv\HPCHEM1\BNA\_N\Data\BN072421\  
 Data File : BN015679.D  
 Acq On : 23 Jul 2021 22:08  
 Operator : CG/JU  
 Sample : M3068-02MSD  
 Misc :  
 ALS Vial : 9 Sample Multiplier: 1

Instrument :  
 BNA\_N  
 ClientSampleId :  
 COMP-BMSD

Manual Integrations  
 APPROVED

mohammad  
 7/26/2021 1:28:18 PM

Quant Time: Jul 24 00:21:53 2021  
 Quant Method : Z:\SVOASRV\HPCHEM1\BNA\_N\METHODS\8270-SIM-BN072421.M  
 Quant Title : ASP BNA STANDARDS FOR 5 POINT CALIBRATION  
 QLast Update : Fri Jul 23 14:45:01 2021  
 Response via : Initial Calibration

Compound	R.T.	QIon	Response	Conc	Units	Dev(Min)	
Internal Standards							
1) 1,4-Dichlorobenzene-d4	7.744	152	13398	0.400	ng	0.00	
7) Naphthalene-d8	10.521	136	61643	0.400	ng	0.00	
13) Acenaphthene-d10	14.370	164	33736	0.400	ng	0.00	
19) Phenanthrene-d10	17.115	188	67488	0.400	ng	0.00	
29) Chrysene-d12	21.312	240	61342	0.400	ng	0.00	
35) Perylene-d12	23.625	264	62695	0.400	ng	0.00	
System Monitoring Compounds							
4) 2-Fluorophenol	5.356	112	8328	0.258	ng	0.00	
5) Phenol-d6	6.923	99	7751	0.205	ng	0.00	
8) Nitrobenzene-d5	8.886	82	16123	0.373	ng	0.00	
11) 2-Methylnaphthalene-d10	12.114	152	37555m	0.409	ng	0.00	
14) 2,4,6-Tribromophenol	15.867	330	6018	0.573	ng	0.00	
15) 2-Fluorobiphenyl	13.000	172	54513	0.396	ng	0.00	
27) Fluoranthene-d10	19.157	212	79415	0.441	ng	0.00	
31) Terphenyl-d14	19.763	244	86437	0.592	ng	0.00	
Target Compounds							
2) 1,4-Dioxane	3.281	88	911	0.228	ng	#	79
3) n-Nitrosodimethylamine	3.640	42	2595	0.263	ng	#	94
6) bis(2-Chloroethyl)ether	7.172	93	13067	0.344	ng		99
9) Naphthalene	10.571	128	52735	0.322	ng		100
10) Hexachlorobutadiene	10.863	225	9030	0.290	ng	#	99
12) 2-Methylnaphthalene	12.189	142	36316	0.344	ng		100
16) Acenaphthylene	14.091	152	51167	0.363	ng		97
17) Acenaphthene	14.434	154	33393	0.341	ng		99
18) Fluorene	15.423	166	43976	0.376	ng		100
20) 4,6-Dinitro-2-methylph...	15.512	198	1439	0.441	ng		93
21) 4-Bromophenyl-phenylether	16.312	248	14504	0.369	ng		99
22) Hexachlorobenzene	16.433	284	15780	0.353	ng		99
23) Atrazine	16.591	200	13342	0.570	ng		97
24) Pentachlorophenol	16.774	266	12198	1.116	ng		99
25) Phenanthrene	17.163	178	76645	0.376	ng		99
26) Anthracene	17.249	178	72631	0.429	ng		100
28) Fluoranthene	19.187	202	94175	0.428	ng		100
30) Pyrene	19.549	202	96494	0.438	ng		99
32) Benzo(a)anthracene	21.302	228	86131	0.448	ng		99
33) Chrysene	21.355	228	86083	0.404	ng		99
34) Bis(2-ethylhexyl)phtha...	21.238	149	82351	1.084	ng		99
36) Indeno(1,2,3-cd)pyrene	25.993	276	93174	0.410	ng		100
37) Benzo(b)fluoranthene	22.926	252	90914	0.386	ng		98
38) Benzo(k)fluoranthene	22.974	252	87532	0.371	ng		98
39) Benzo(a)pyrene	23.522	252	83166	0.435	ng		99
40) Dibenzo(a,h)anthracene	26.010	278	72916	0.408	ng		99
41) Benzo(g,h,i)perylene	26.719	276	82109	0.395	ng		100

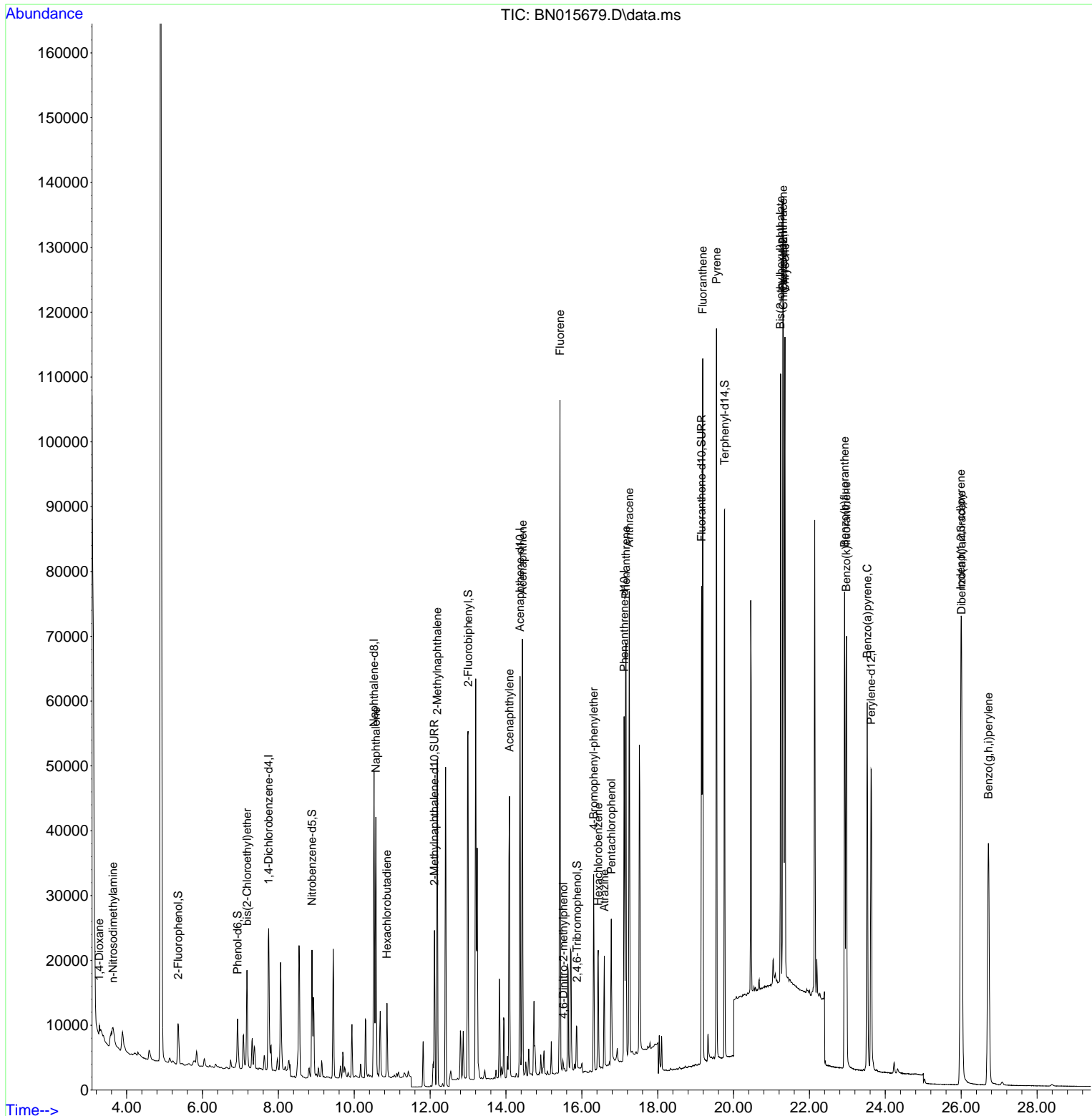
(#) = qualifier out of range (m) = manual integration (+) = signals summed

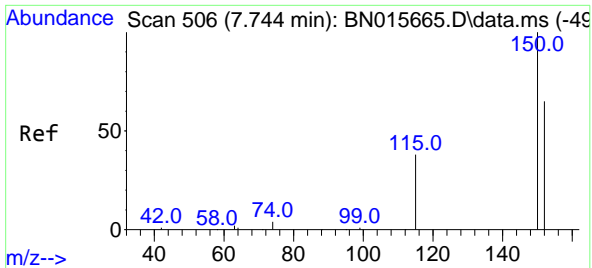
Data Path : Z:\svoasrv\HPCHEM1\BNA\_N\Data\BN072421\  
 Data File : BN015679.D  
 Acq On : 23 Jul 2021 22:08  
 Operator : CG/JU  
 Sample : M3068-02MSD  
 Misc :  
 ALS Vial : 9 Sample Multiplier: 1

Instrument :  
 BNA\_N  
 Client Sampled :  
 COMP-BMSD

Manual Integrations  
**APPROVED**  
 mohammad  
 7/26/2021 1:28:18 PM

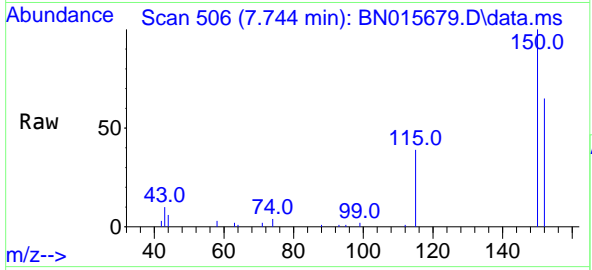
Quant Time: Jul 24 00:21:53 2021  
 Quant Method : Z:\SVOASRV\HPCHEM1\BNA\_N\METHODS\8270-SIM-BN072421.M  
 Quant Title : ASP BNA STANDARDS FOR 5 POINT CALIBRATION  
 QLast Update : Fri Jul 23 14:45:01 2021  
 Response via : Initial Calibration





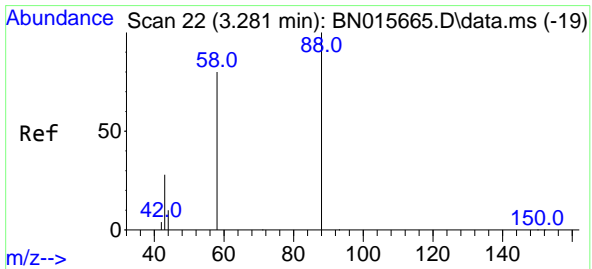
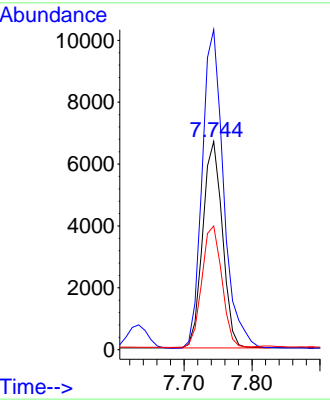
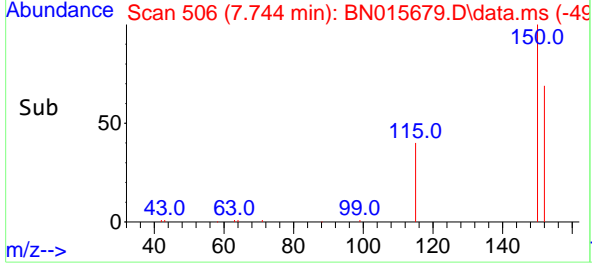
#1  
 1,4-Dichlorobenzene-d4  
 Concen: 0.400 ng  
 RT: 7.744 min Scan# 506  
 Delta R.T. -0.000 min  
 Lab File: BN015679.D  
 Acq: 23 Jul 2021 22:08

**Instrument :**  
 BNA\_N  
**ClientSampled :**  
 COMP-BMSD

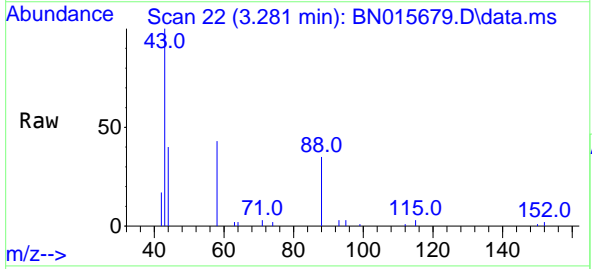


Tgt Ion: 152 Resp: 13398  
 Ion Ratio Lower Upper  
 152 100  
 150 153.7 123.4 185.0  
 115 59.4 47.2 70.8

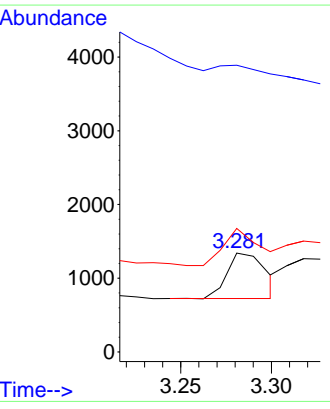
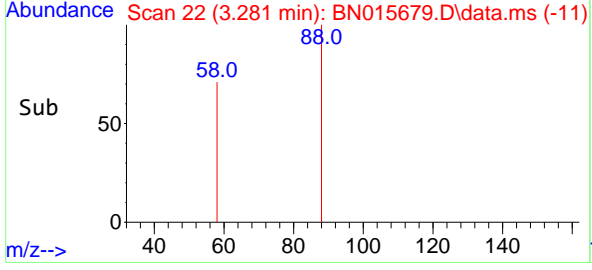
**Manual Integrations**  
**APPROVED**  
 mohammad  
 7/26/2021 1:28:18 PM

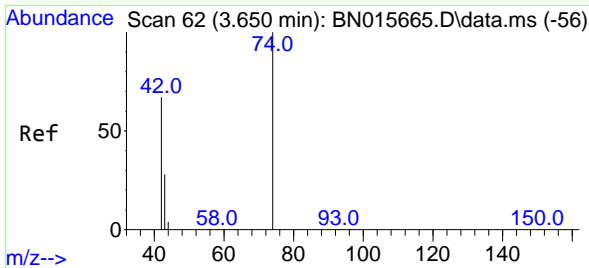


#2  
 1,4-Dioxane  
 Concen: 0.228 ng  
 RT: 3.281 min Scan# 22  
 Delta R.T. -0.000 min  
 Lab File: BN015679.D  
 Acq: 23 Jul 2021 22:08



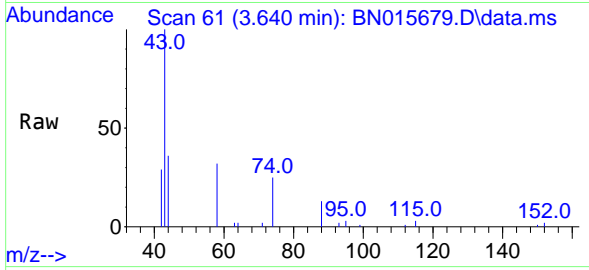
Tgt Ion: 88 Resp: 911  
 Ion Ratio Lower Upper  
 88 100  
 43 0.0 23.5 35.3#  
 58 73.1 64.2 96.4





#3  
 n-Nitrosodimethylamine  
 Concen: 0.263 ng  
 RT: 3.640 min Scan# 61  
 Delta R.T. -0.009 min  
 Lab File: BN015679.D  
 Acq: 23 Jul 2021 22:08

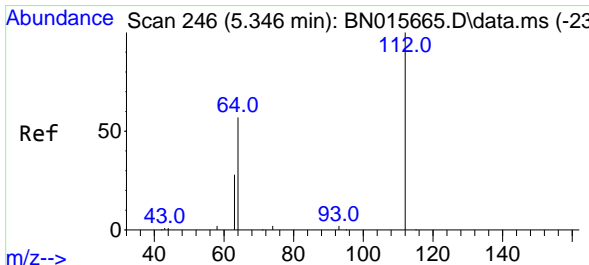
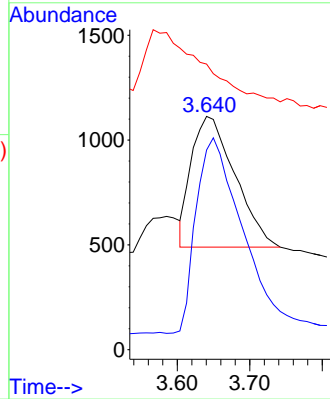
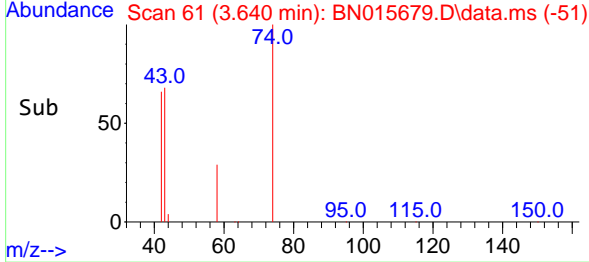
Instrument :  
 BNA\_N  
 ClientSampled :  
 COMP-BMSD



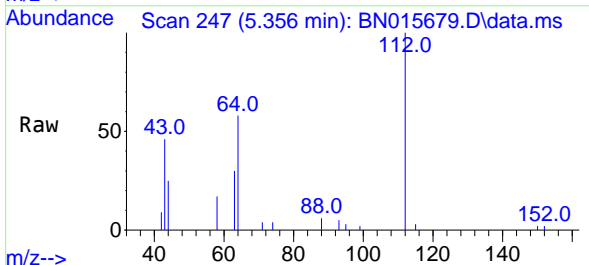
Tgt Ion: 42 Resp: 2595  
 Ion Ratio Lower Upper  
 42 100  
 74 158.1 121.0 181.6  
 44 0.0 6.2 9.4#

Manual Integrations  
 APPROVED

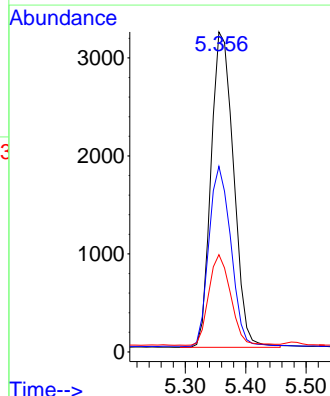
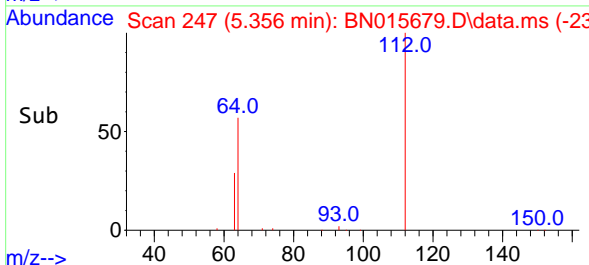
mohammad  
 7/26/2021 1:28:18 PM

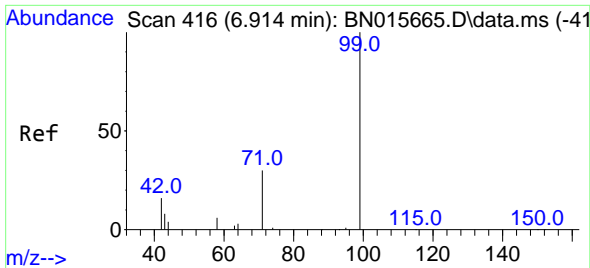


#4  
 2-Fluorophenol  
 Concen: 0.258 ng  
 RT: 5.356 min Scan# 247  
 Delta R.T. 0.009 min  
 Lab File: BN015679.D  
 Acq: 23 Jul 2021 22:08



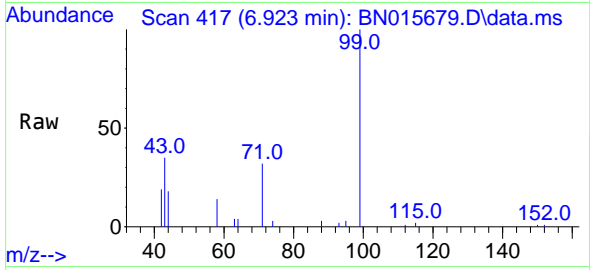
Tgt Ion: 112 Resp: 8328  
 Ion Ratio Lower Upper  
 112 100  
 64 55.9 44.9 67.3  
 63 28.0 22.6 33.8





#5  
Phenol-d6  
Concen: 0.205 ng  
RT: 6.923 min Scan# 417  
Delta R.T. 0.009 min  
Lab File: BN015679.D  
Acq: 23 Jul 2021 22:08

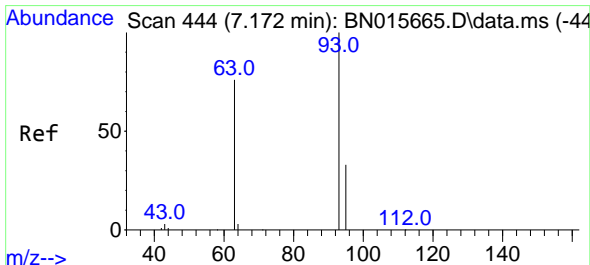
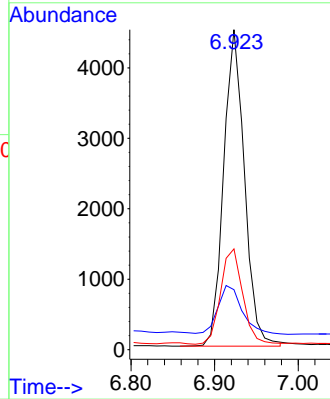
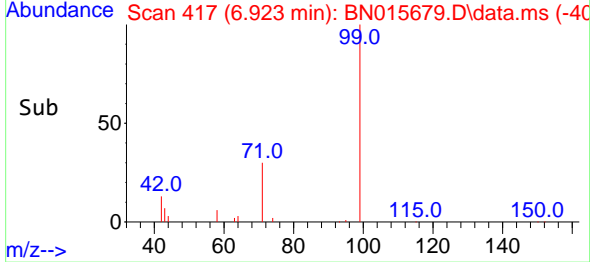
Instrument :  
BNA\_N  
ClientSampled :  
COMP-BMSD



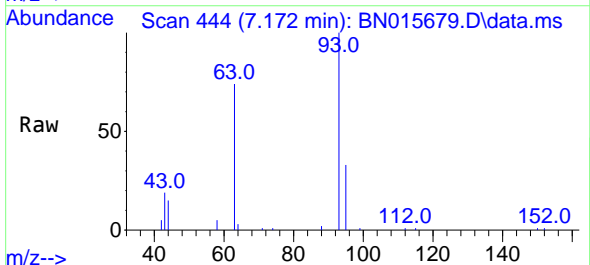
Tgt Ion: 99 Resp: 7751  
Ion Ratio Lower Upper  
99 100  
42 17.4 13.8 20.6  
71 31.9 24.2 36.2

Manual Integrations  
APPROVED

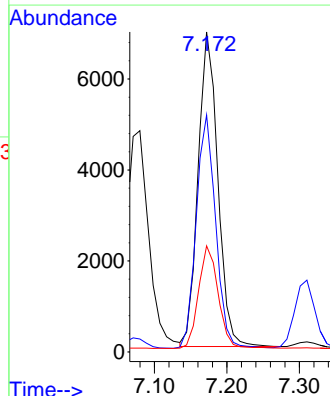
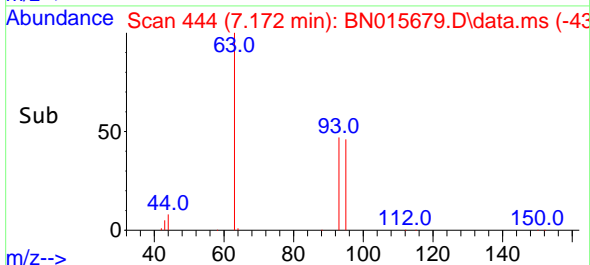
mohammad  
7/26/2021 1:28:18 PM

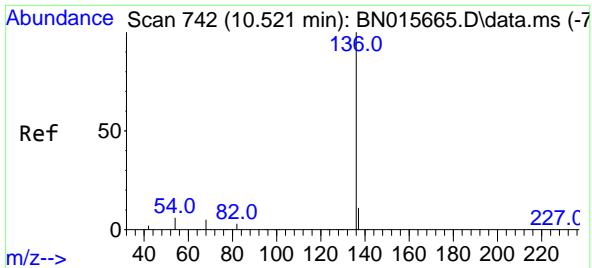


#6  
bis(2-Chloroethyl)ether  
Concen: 0.344 ng  
RT: 7.172 min Scan# 444  
Delta R.T. -0.000 min  
Lab File: BN015679.D  
Acq: 23 Jul 2021 22:08



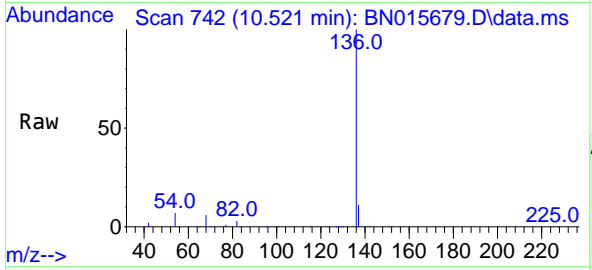
Tgt Ion: 93 Resp: 13067  
Ion Ratio Lower Upper  
93 100  
63 73.2 59.9 89.9  
95 32.7 26.3 39.5





#7  
 Naphthalene-d8  
 Concen: 0.400 ng  
 RT: 10.521 min Scan# 742  
 Delta R.T. -0.000 min  
 Lab File: BN015679.D  
 Acq: 23 Jul 2021 22:08

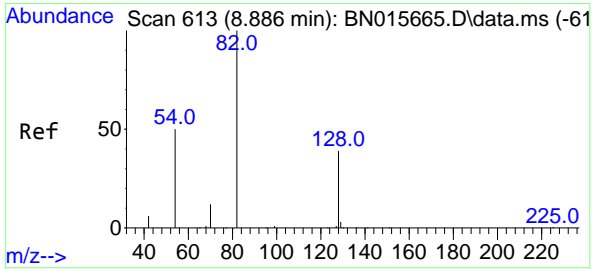
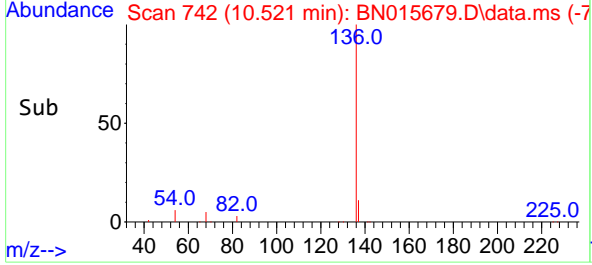
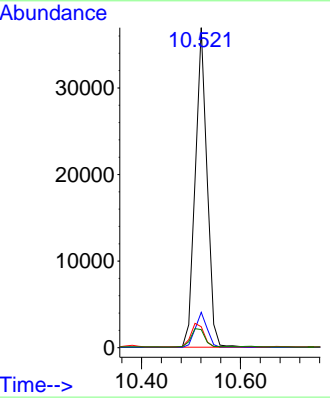
**Instrument :**  
 BNA\_N  
**ClientSampled :**  
 COMP-BMSD



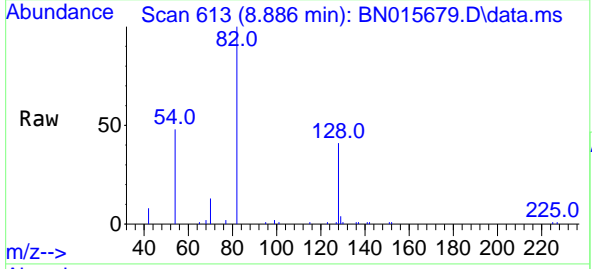
Tgt Ion: 136 Resp: 61643

Ion	Ratio	Lower	Upper
136	100		
137	11.1	8.7	13.1
54	6.6	5.2	7.8
68	5.6	4.4	6.6

**Manual Integrations**  
**APPROVED**  
 mohammad  
 7/26/2021 1:28:18 PM

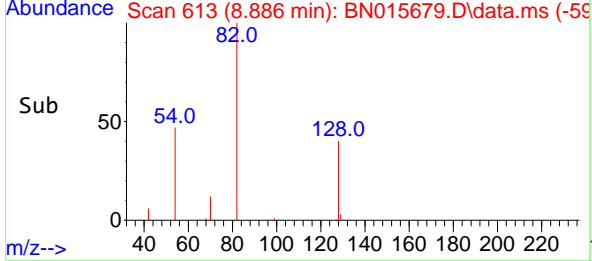
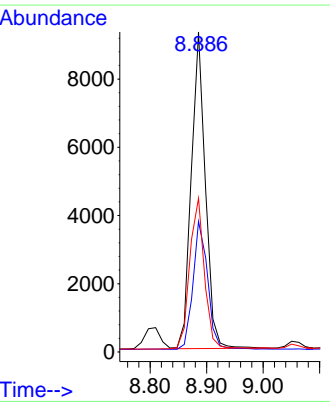


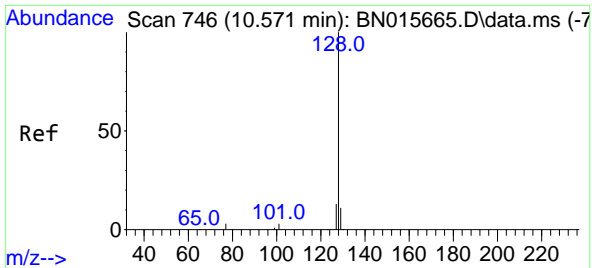
#8  
 Nitrobenzene-d5  
 Concen: 0.373 ng  
 RT: 8.886 min Scan# 613  
 Delta R.T. -0.000 min  
 Lab File: BN015679.D  
 Acq: 23 Jul 2021 22:08



Tgt Ion: 82 Resp: 16123

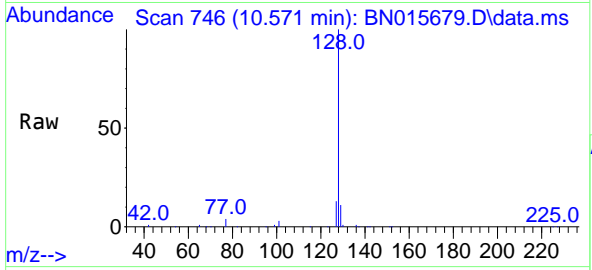
Ion	Ratio	Lower	Upper
82	100		
128	40.8	31.2	46.8
54	48.0	40.2	60.4





#9  
 Naphthalene  
 Concen: 0.322 ng  
 RT: 10.571 min Scan# 746  
 Delta R.T. -0.000 min  
 Lab File: BN015679.D  
 Acq: 23 Jul 2021 22:08

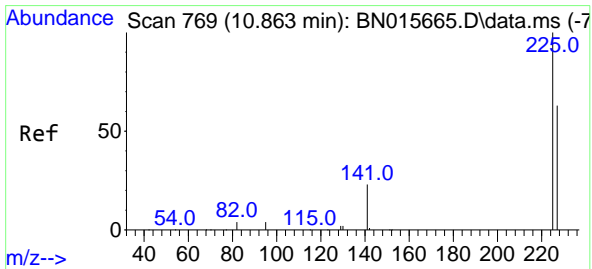
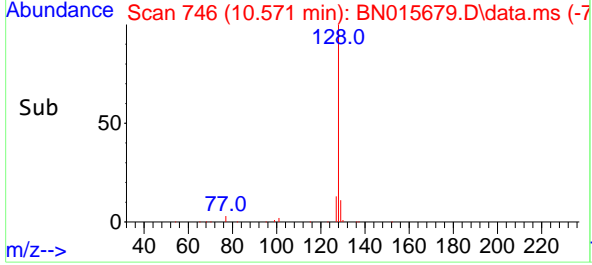
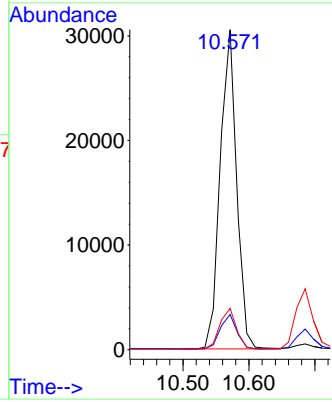
**Instrument :**  
 BNA\_N  
**ClientSampled :**  
 COMP-BMSD



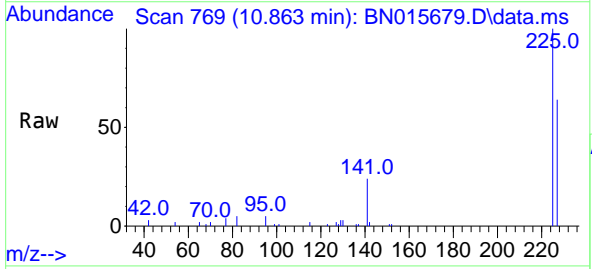
Tgt Ion:128 Resp: 52735

Ion	Ratio	Lower	Upper
128	100		
129	11.0	8.8	13.2
127	12.9	10.2	15.4

**Manual Integrations**  
**APPROVED**  
 mohammad  
 7/26/2021 1:28:18 PM

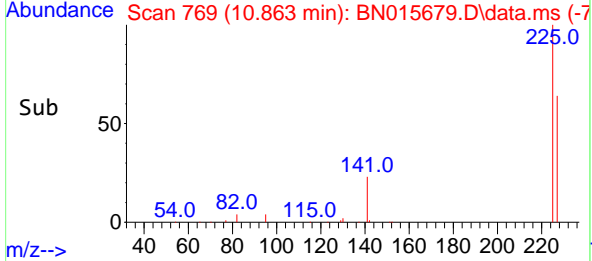
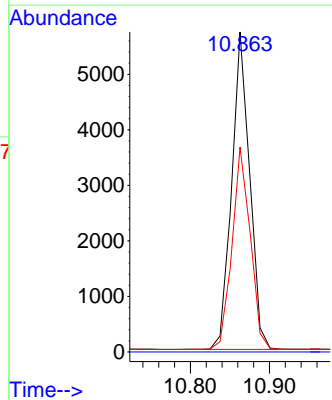


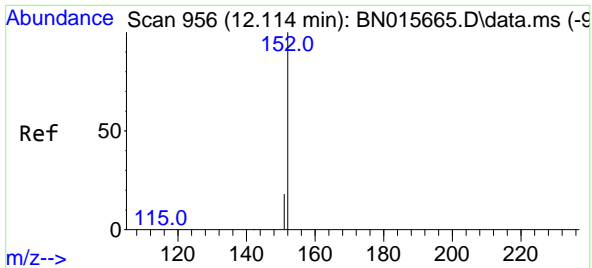
#10  
 Hexachlorobutadiene  
 Concen: 0.290 ng  
 RT: 10.863 min Scan# 769  
 Delta R.T. -0.000 min  
 Lab File: BN015679.D  
 Acq: 23 Jul 2021 22:08



Tgt Ion:225 Resp: 9030

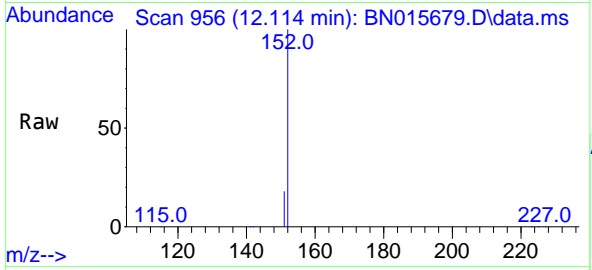
Ion	Ratio	Lower	Upper
225	100		
223	0.0	0.0	0.0
227	64.4	50.6	76.0





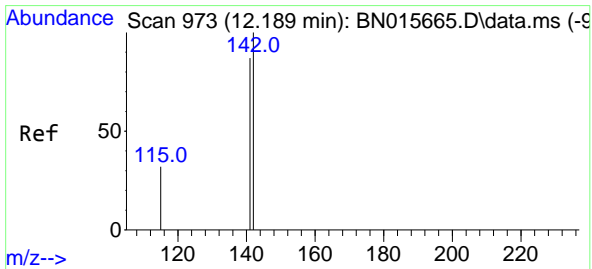
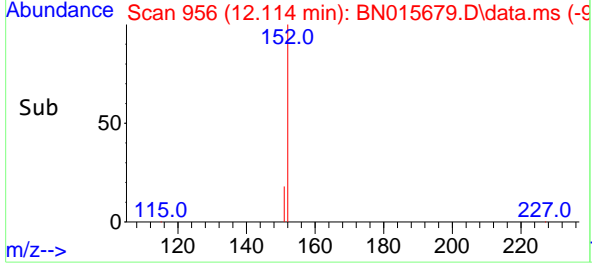
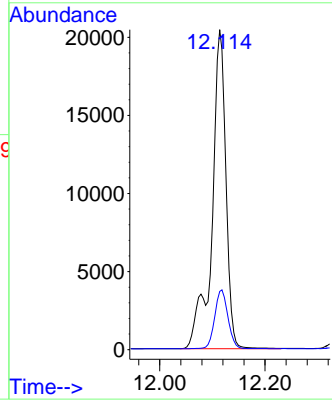
#11  
 2-Methylnaphthalene-d10  
 Concen: 0.409 ng m  
 RT: 12.114 min Scan# 956  
 Delta R.T. -0.000 min  
 Lab File: BN015679.D  
 Acq: 23 Jul 2021 22:08

**Instrument :**  
 BNA\_N  
**ClientSampled :**  
 COMP-BMSD

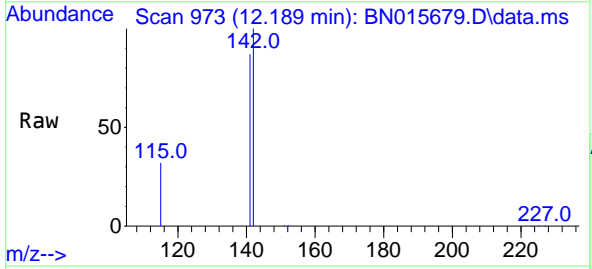


Tgt Ion:152 Resp: 37555  
 Ion Ratio Lower Upper  
 152 100  
 151 17.5 16.4 24.6

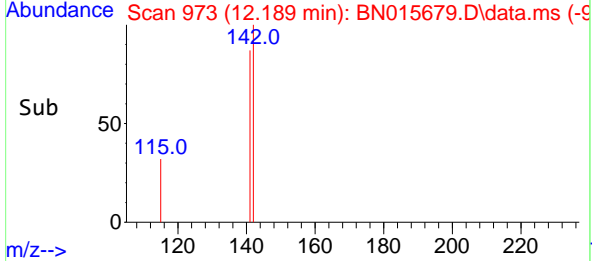
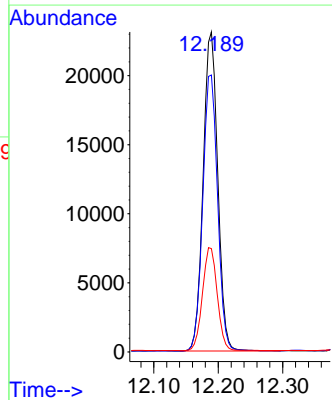
**Manual Integrations**  
**APPROVED**  
 mohammad  
 7/26/2021 1:28:18 PM



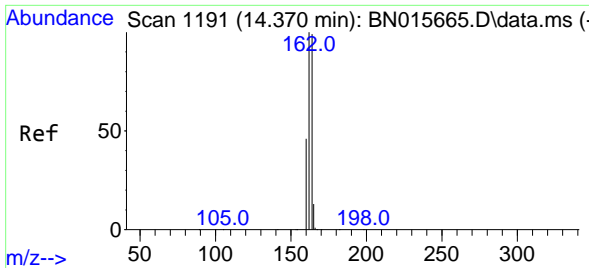
#12  
 2-Methylnaphthalene  
 Concen: 0.344 ng  
 RT: 12.189 min Scan# 973  
 Delta R.T. -0.000 min  
 Lab File: BN015679.D  
 Acq: 23 Jul 2021 22:08



Tgt Ion:142 Resp: 36316  
 Ion Ratio Lower Upper  
 142 100  
 141 86.5 69.5 104.3  
 115 32.3 26.1 39.1

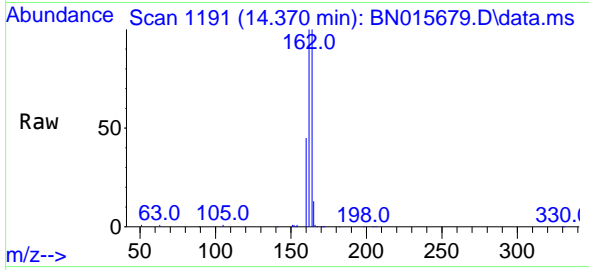






#13  
 Acenaphthene-d10  
 Concen: 0.400 ng  
 RT: 14.370 min Scan# 1191  
 Delta R.T. -0.000 min  
 Lab File: BN015679.D  
 Acq: 23 Jul 2021 22:08

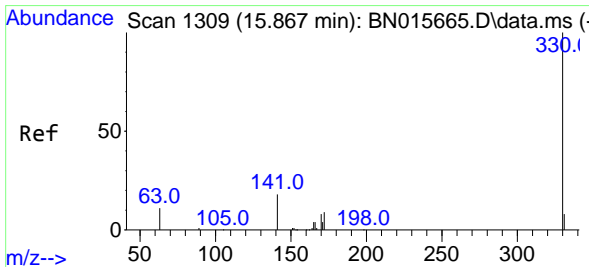
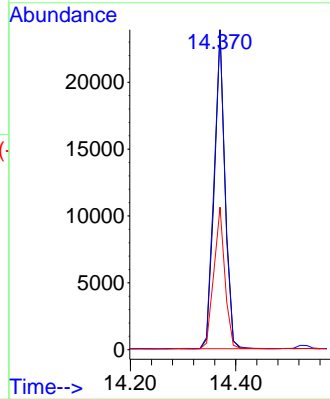
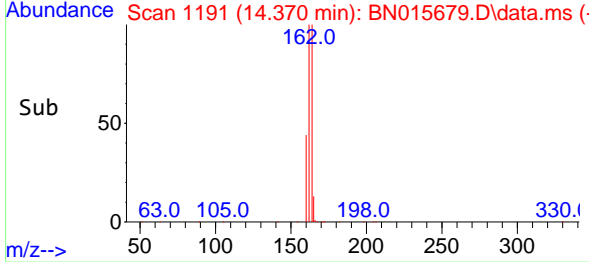
Instrument :  
 BNA\_N  
 ClientSampled :  
 COMP-BMSD



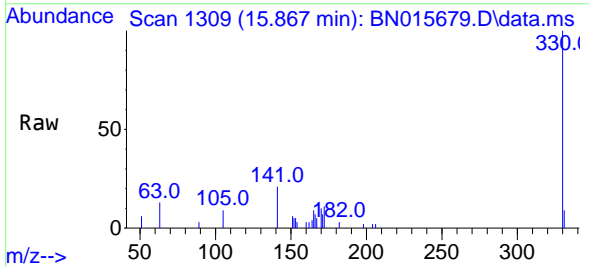
Tgt Ion:164 Resp: 33736  
 Ion Ratio Lower Upper  
 164 100  
 162 99.8 80.6 120.8  
 160 44.5 37.0 55.4

Manual Integrations  
 APPROVED

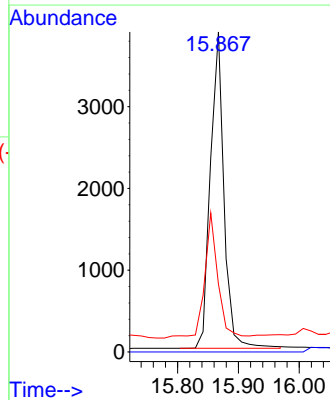
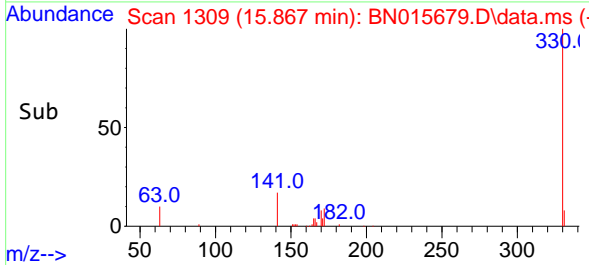
mohammad  
 7/26/2021 1:28:18 PM

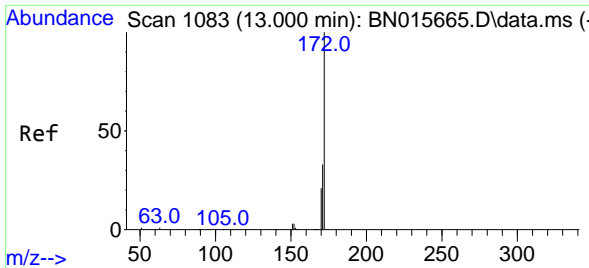


#14  
 2,4,6-Tribromophenol  
 Concen: 0.573 ng  
 RT: 15.867 min Scan# 1309  
 Delta R.T. -0.000 min  
 Lab File: BN015679.D  
 Acq: 23 Jul 2021 22:08



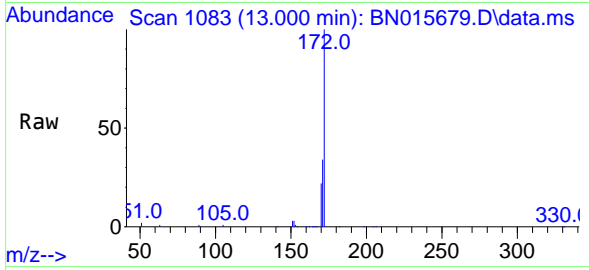
Tgt Ion:330 Resp: 6018  
 Ion Ratio Lower Upper  
 330 100  
 332 0.0 0.0 0.0  
 141 35.2 28.7 43.1





#15  
 2-Fluorobiphenyl  
 Concen: 0.396 ng  
 RT: 13.000 min Scan# 1083  
 Delta R.T. -0.000 min  
 Lab File: BN015679.D  
 Acq: 23 Jul 2021 22:08

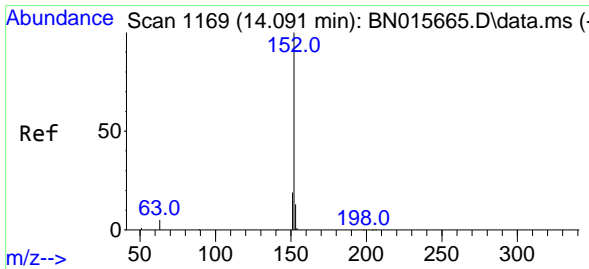
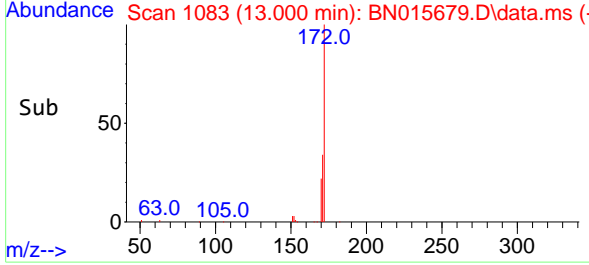
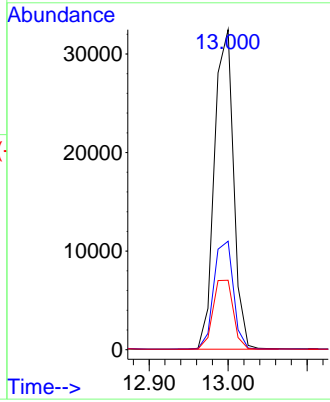
**Instrument :**  
 BNA\_N  
**ClientSampled :**  
 COMP-BMSD



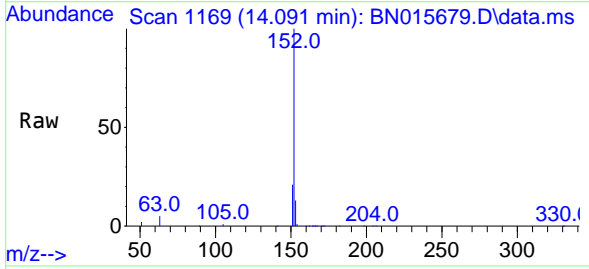
Tgt Ion:172 Resp: 54513

Ion	Ratio	Lower	Upper
172	100		
171	33.9	26.6	40.0
170	21.7	17.2	25.8

**Manual Integrations**  
**APPROVED**  
 mohammad  
 7/26/2021 1:28:18 PM

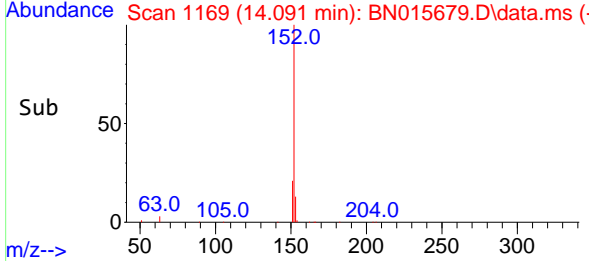
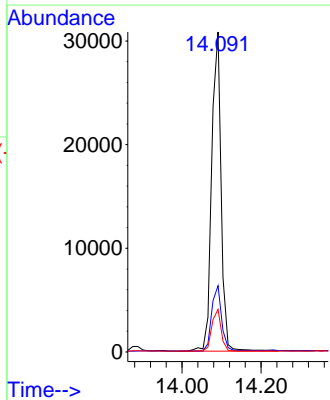


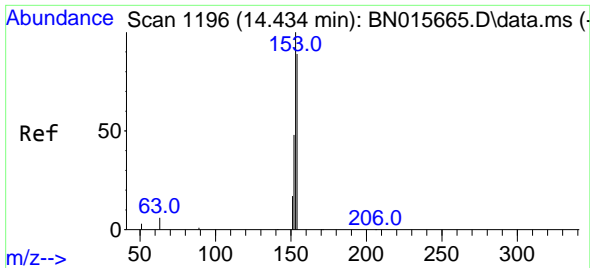
#16  
 Acenaphthylene  
 Concen: 0.363 ng  
 RT: 14.091 min Scan# 1169  
 Delta R.T. -0.000 min  
 Lab File: BN015679.D  
 Acq: 23 Jul 2021 22:08



Tgt Ion:152 Resp: 51167

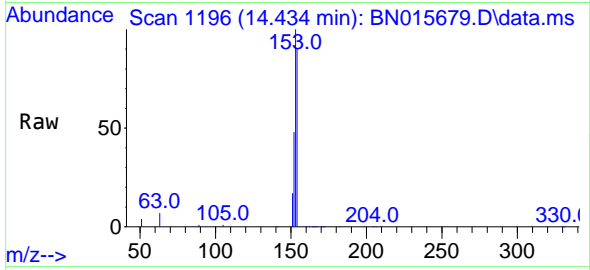
Ion	Ratio	Lower	Upper
152	100		
151	21.8	15.4	23.2
153	13.0	10.3	15.5





#17  
 Acenaphthene  
 Concen: 0.341 ng  
 RT: 14.434 min Scan# 1196  
 Delta R.T. -0.000 min  
 Lab File: BN015679.D  
 Acq: 23 Jul 2021 22:08

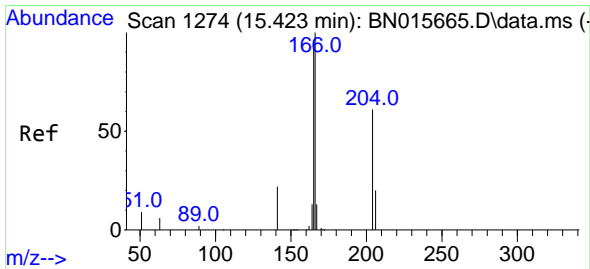
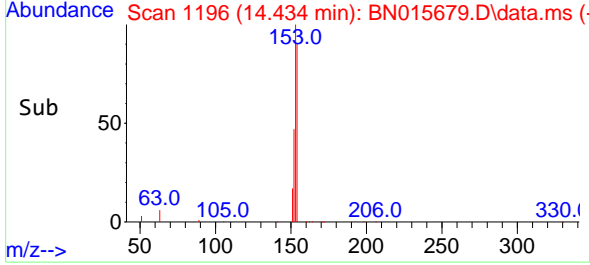
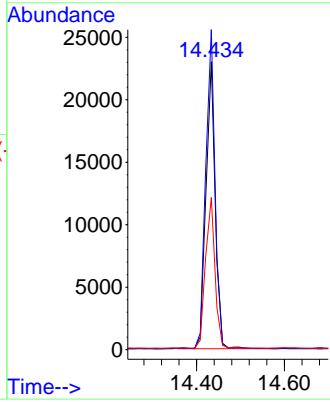
**Instrument :**  
 BNA\_N  
**ClientSampled :**  
 COMP-BMSD



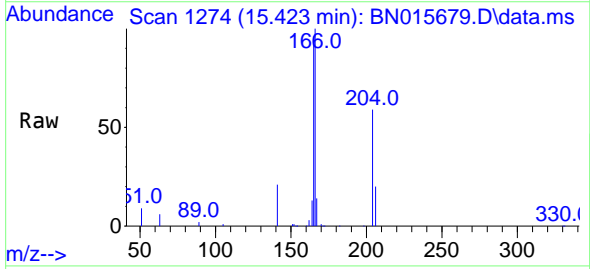
Tgt Ion:154 Resp: 33393

Ion	Ratio	Lower	Upper
154	100		
153	112.3	90.6	136.0
152	53.9	44.6	67.0

**Manual Integrations**  
**APPROVED**  
 mohammad  
 7/26/2021 1:28:18 PM

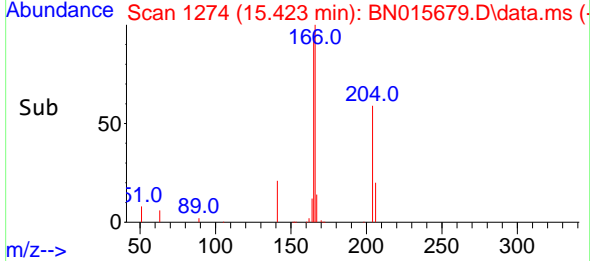
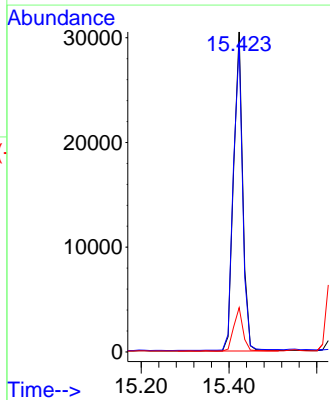


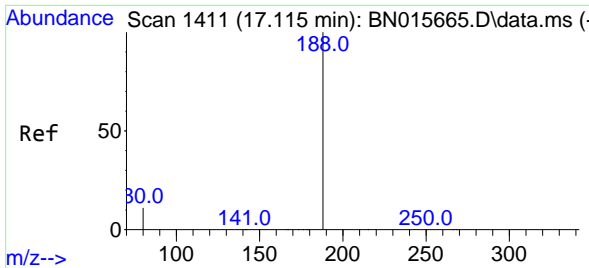
#18  
 Fluorene  
 Concen: 0.376 ng  
 RT: 15.423 min Scan# 1274  
 Delta R.T. -0.000 min  
 Lab File: BN015679.D  
 Acq: 23 Jul 2021 22:08



Tgt Ion:166 Resp: 43976

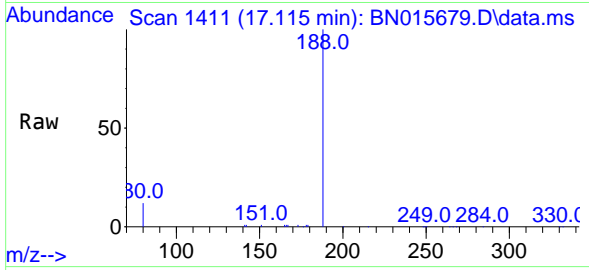
Ion	Ratio	Lower	Upper
166	100		
165	98.1	78.3	117.5
167	13.7	10.8	16.2





#19  
 Phenanthrene-d10  
 Concen: 0.400 ng  
 RT: 17.115 min Scan# 1411  
 Delta R.T. -0.000 min  
 Lab File: BN015679.D  
 Acq: 23 Jul 2021 22:08

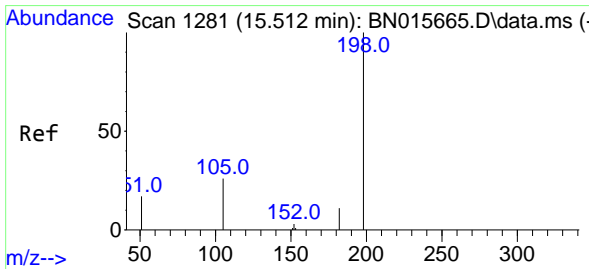
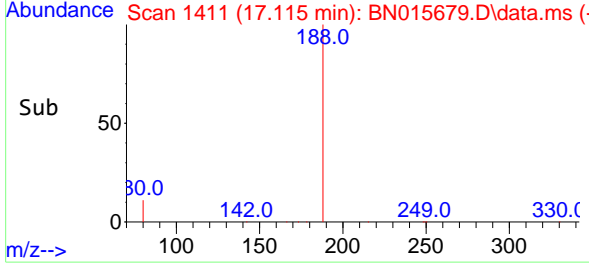
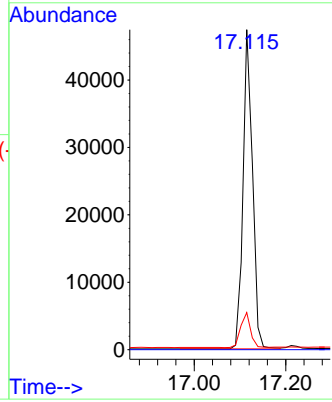
**Instrument :**  
 BNA\_N  
**ClientSampled :**  
 COMP-BMSD



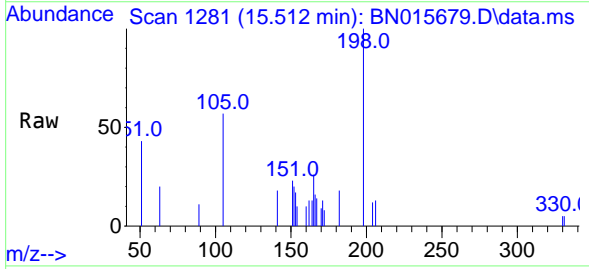
Tgt Ion:188 Resp: 67488

Ion	Ratio	Lower	Upper
188	100		
94	0.0	0.0	0.0
80	11.6	9.2	13.8

**Manual Integrations**  
**APPROVED**  
 mohammad  
 7/26/2021 1:28:18 PM

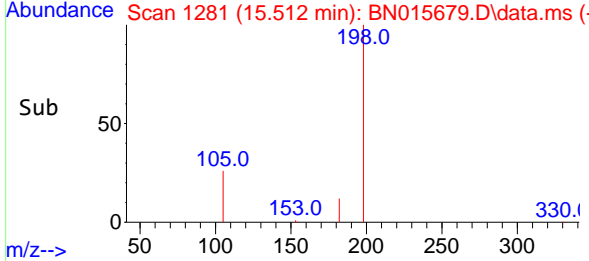
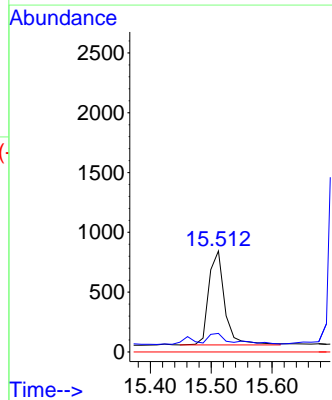


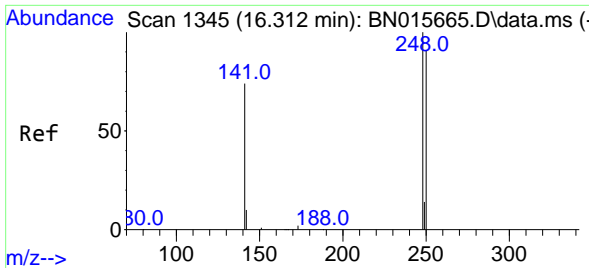
#20  
 4,6-Dinitro-2-methylphenol  
 Concen: 0.441 ng  
 RT: 15.512 min Scan# 1281  
 Delta R.T. -0.000 min  
 Lab File: BN015679.D  
 Acq: 23 Jul 2021 22:08



Tgt Ion:198 Resp: 1439

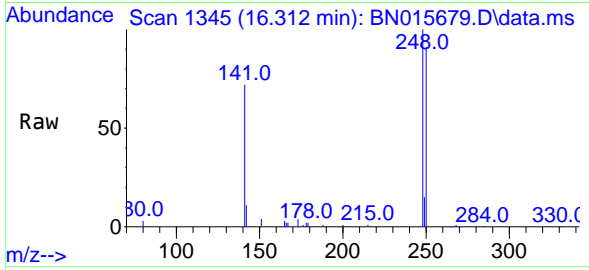
Ion	Ratio	Lower	Upper
198	100		
182	18.4	17.2	25.8
77	0.0	0.0	0.0





#21  
 4-Bromophenyl-phenylether  
 Concen: 0.369 ng  
 RT: 16.312 min Scan# 1345  
 Delta R.T. -0.000 min  
 Lab File: BN015679.D  
 Acq: 23 Jul 2021 22:08

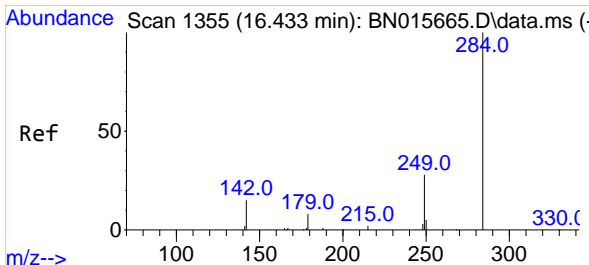
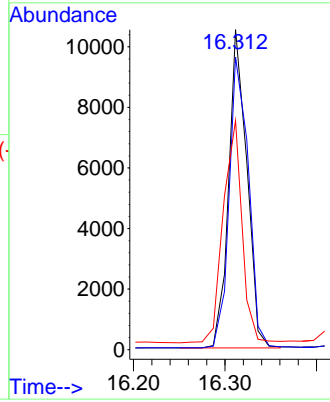
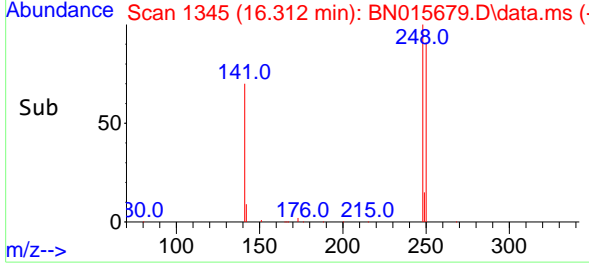
**Instrument :**  
 BNA\_N  
**ClientSampled :**  
 COMP-BMSD



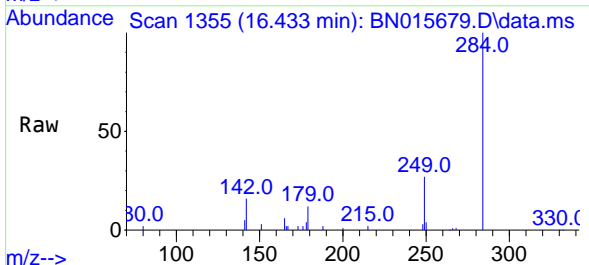
Tgt Ion:248 Resp: 14504

Ion	Ratio	Lower	Upper
248	100		
250	91.4	72.9	109.3
141	71.6	59.1	88.7

**Manual Integrations**  
**APPROVED**  
 mohammad  
 7/26/2021 1:28:18 PM

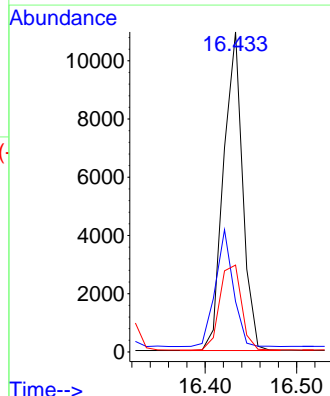
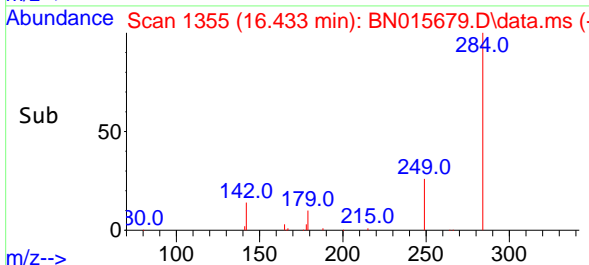


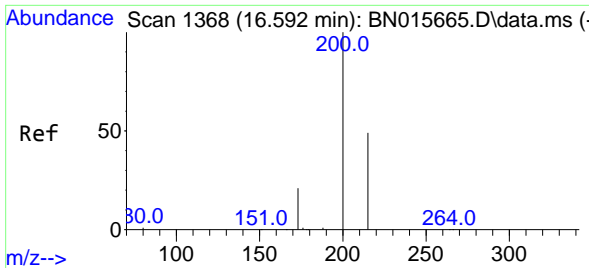
#22  
 Hexachlorobenzene  
 Concen: 0.353 ng  
 RT: 16.433 min Scan# 1355  
 Delta R.T. -0.000 min  
 Lab File: BN015679.D  
 Acq: 23 Jul 2021 22:08



Tgt Ion:284 Resp: 15780

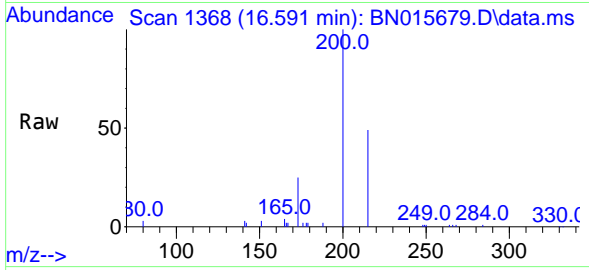
Ion	Ratio	Lower	Upper
284	100		
142	34.5	27.5	41.3
249	30.6	25.0	37.6





#23  
 Atrazine  
 Concen: 0.570 ng  
 RT: 16.591 min Scan# 1368  
 Delta R.T. -0.000 min  
 Lab File: BN015679.D  
 Acq: 23 Jul 2021 22:08

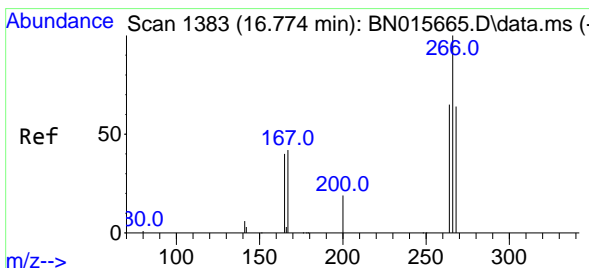
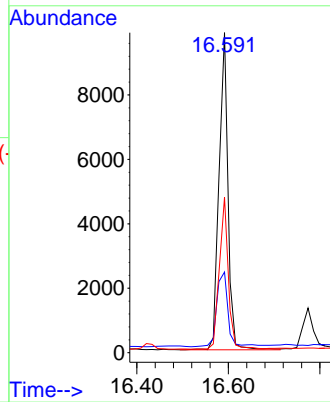
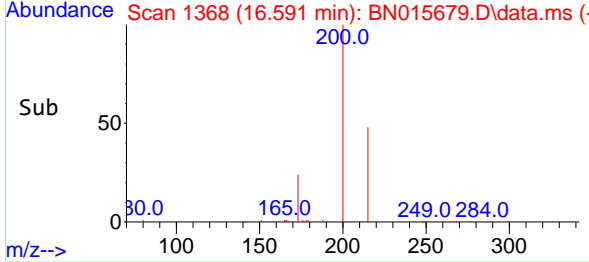
**Instrument :**  
 BNA\_N  
**ClientSampled :**  
 COMP-BMSD



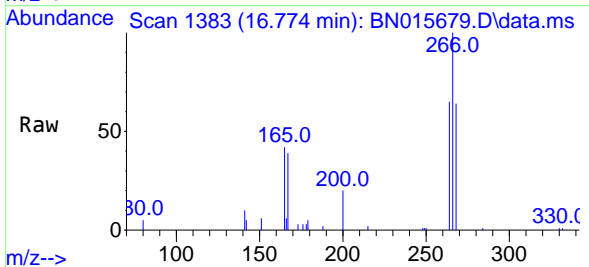
Tgt Ion: 200 Resp: 13342

Ion	Ratio	Lower	Upper
200	100		
173	25.2	17.8	26.8
215	48.6	39.8	59.8

**Manual Integrations**  
**APPROVED**  
 mohammad  
 7/26/2021 1:28:18 PM

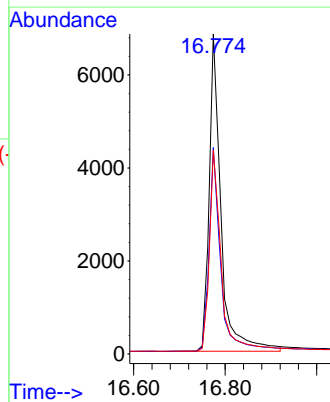
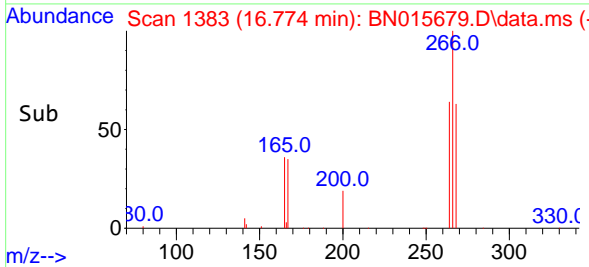


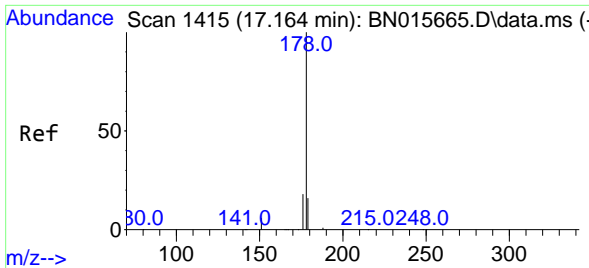
#24  
 Pentachlorophenol  
 Concen: 1.116 ng  
 RT: 16.774 min Scan# 1383  
 Delta R.T. 0.000 min  
 Lab File: BN015679.D  
 Acq: 23 Jul 2021 22:08



Tgt Ion: 266 Resp: 12198

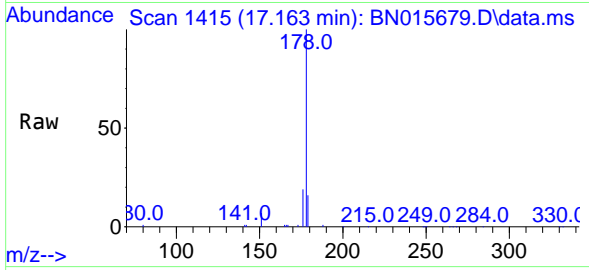
Ion	Ratio	Lower	Upper
266	100		
264	63.4	51.0	76.4
268	63.7	51.8	77.8





#25  
 Phenanthrene  
 Concen: 0.376 ng  
 RT: 17.163 min Scan# 1415  
 Delta R.T. -0.000 min  
 Lab File: BN015679.D  
 Acq: 23 Jul 2021 22:08

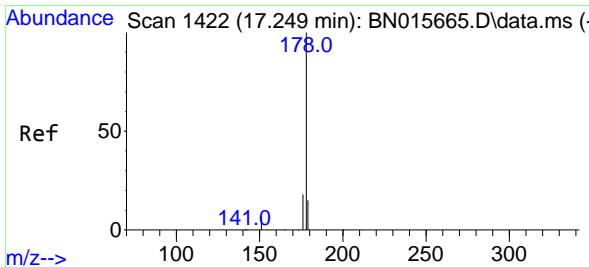
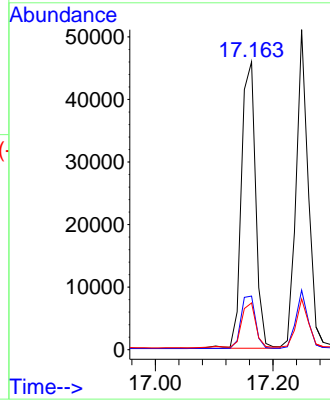
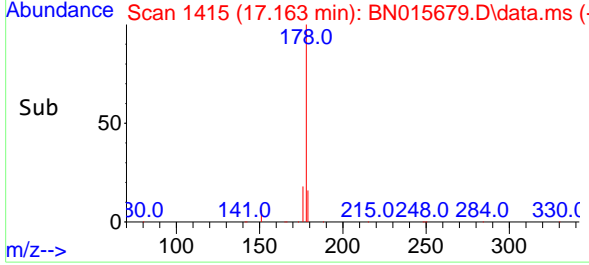
Instrument :  
 BNA\_N  
 ClientSampled :  
 COMP-BMSD



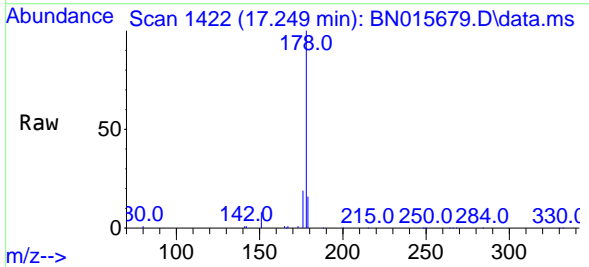
Tgt Ion:178 Resp: 76645  
 Ion Ratio Lower Upper  
 178 100  
 176 19.0 15.0 22.6  
 179 16.2 12.4 18.6

Manual Integrations  
 APPROVED

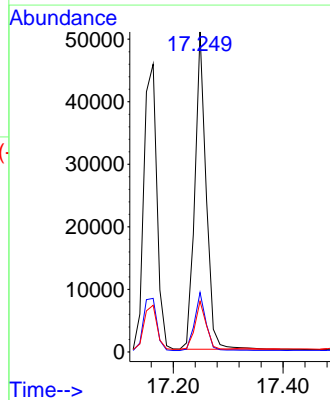
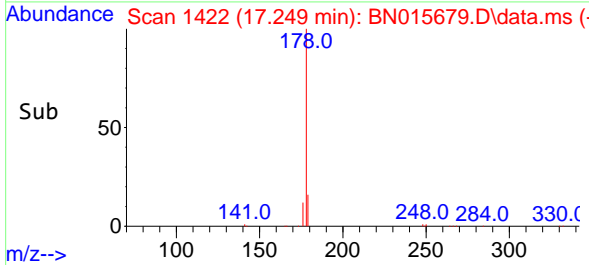
mohammad  
 7/26/2021 1:28:18 PM

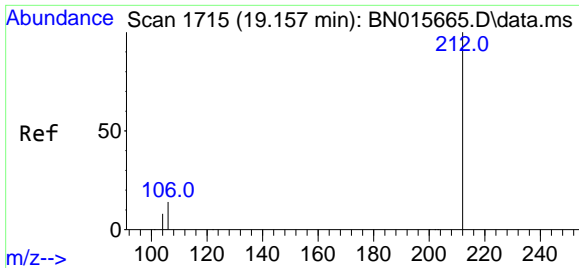


#26  
 Anthracene  
 Concen: 0.429 ng  
 RT: 17.249 min Scan# 1422  
 Delta R.T. -0.000 min  
 Lab File: BN015679.D  
 Acq: 23 Jul 2021 22:08



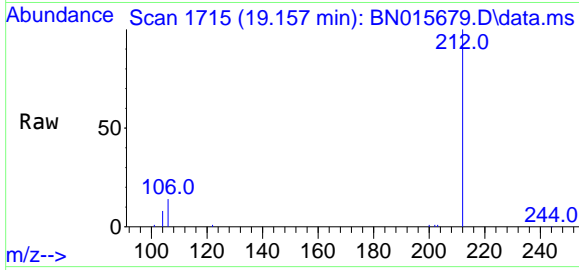
Tgt Ion:178 Resp: 72631  
 Ion Ratio Lower Upper  
 178 100  
 176 18.3 14.6 21.8  
 179 15.0 12.2 18.2





#27  
 Fluoranthene-d10  
 Concen: 0.441 ng  
 RT: 19.157 min Scan# 1715  
 Delta R.T. -0.000 min  
 Lab File: BN015679.D  
 Acq: 23 Jul 2021 22:08

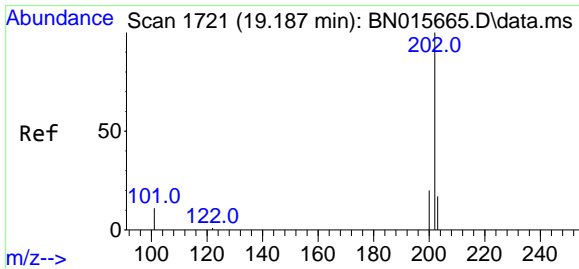
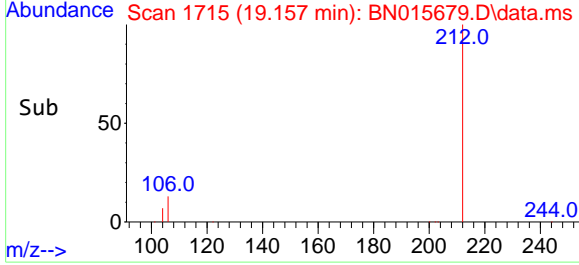
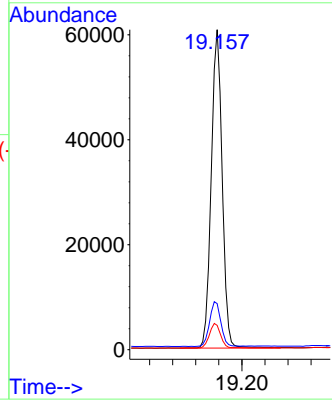
**Instrument :**  
 BNA\_N  
**ClientSampled :**  
 COMP-BMSD



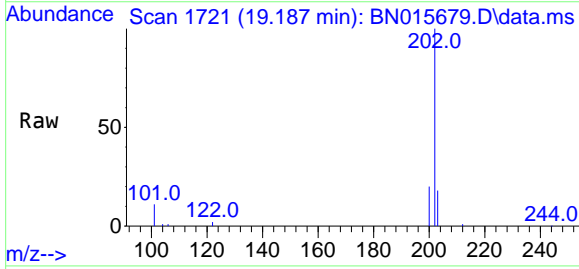
Tgt Ion: 212 Resp: 79415

Ion	Ratio	Lower	Upper
212	100		
106	14.6	11.5	17.3
104	7.9	6.2	9.4

**Manual Integrations**  
**APPROVED**  
 mohammad  
 7/26/2021 1:28:18 PM

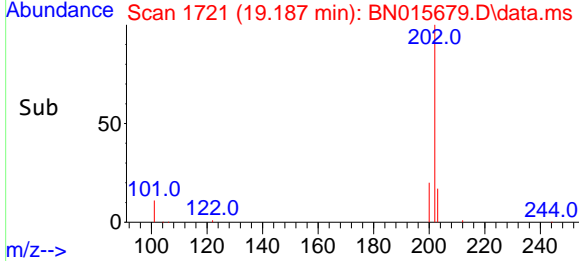
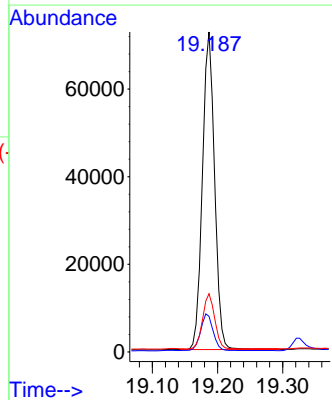


#28  
 Fluoranthene  
 Concen: 0.428 ng  
 RT: 19.187 min Scan# 1721  
 Delta R.T. -0.000 min  
 Lab File: BN015679.D  
 Acq: 23 Jul 2021 22:08

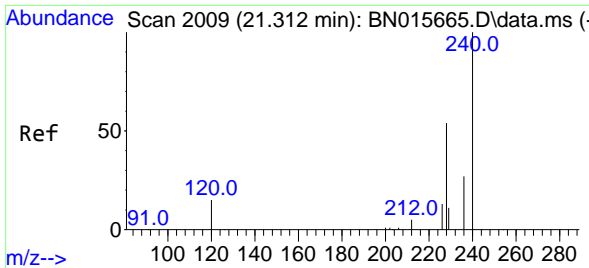


Tgt Ion: 202 Resp: 94175

Ion	Ratio	Lower	Upper
202	100		
101	11.7	9.5	14.3
203	17.1	13.8	20.6

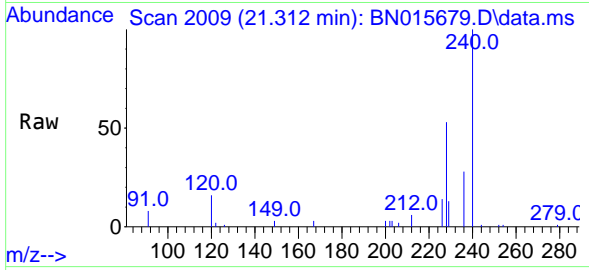






#29  
 Chrysene-d12  
 Concen: 0.400 ng  
 RT: 21.312 min Scan# 2009  
 Delta R.T. -0.000 min  
 Lab File: BN015679.D  
 Acq: 23 Jul 2021 22:08

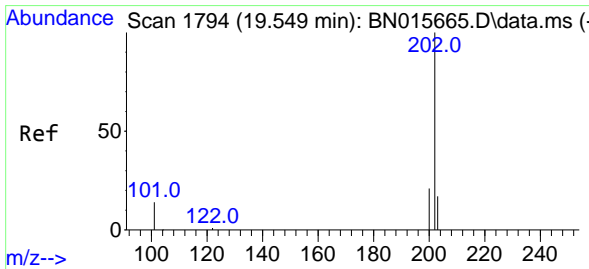
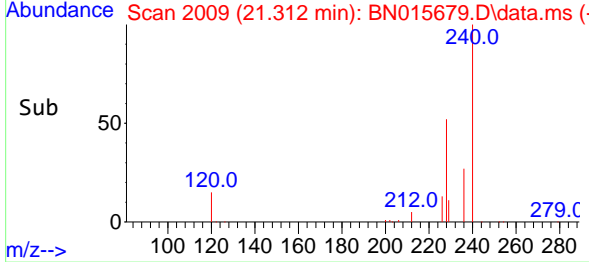
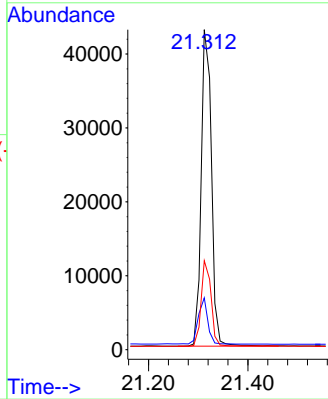
**Instrument :**  
 BNA\_N  
**ClientSampled :**  
 COMP-BMSD



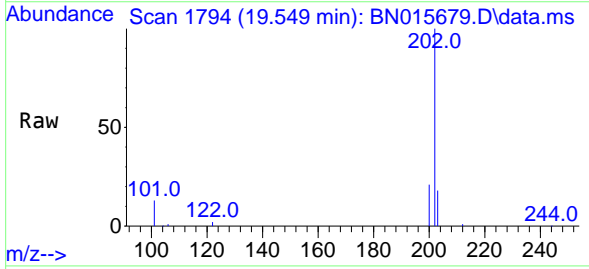
Tgt Ion:240 Resp: 61342

Ion	Ratio	Lower	Upper
240	100		
120	16.2	12.2	18.4
236	27.8	21.5	32.3

**Manual Integrations**  
**APPROVED**  
 mohammad  
 7/26/2021 1:28:18 PM

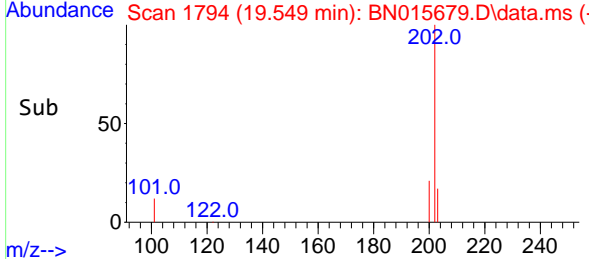
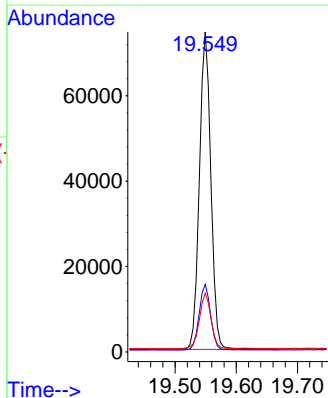


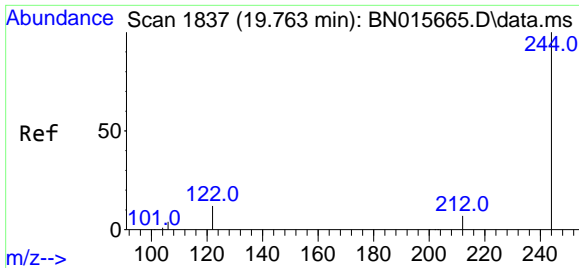
#30  
 Pyrene  
 Concen: 0.438 ng  
 RT: 19.549 min Scan# 1794  
 Delta R.T. -0.000 min  
 Lab File: BN015679.D  
 Acq: 23 Jul 2021 22:08



Tgt Ion:202 Resp: 96494

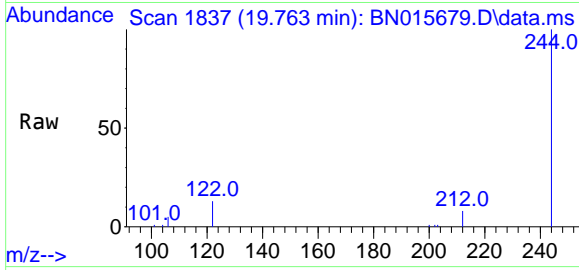
Ion	Ratio	Lower	Upper
202	100		
200	20.7	16.4	24.6
203	17.7	13.9	20.9





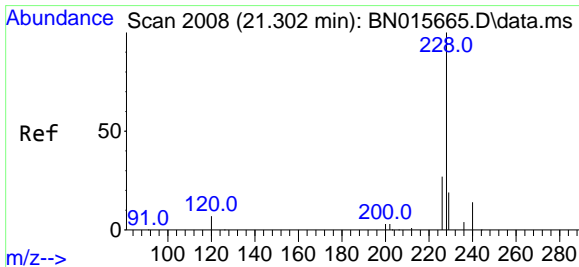
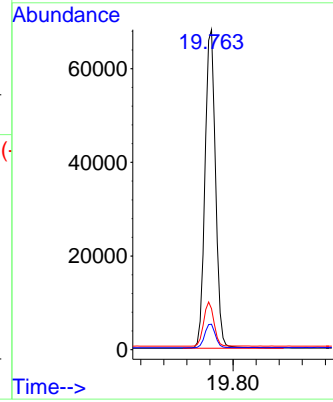
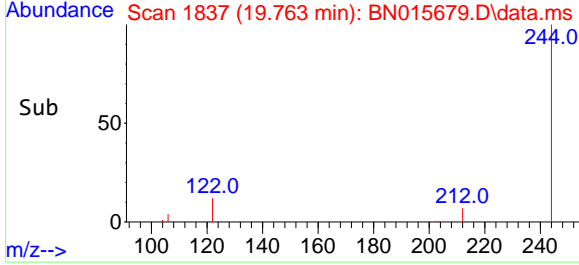
#31  
 Terphenyl-d14  
 Concen: 0.592 ng  
 RT: 19.763 min Scan# 1837  
 Delta R.T. -0.000 min  
 Lab File: BN015679.D  
 Acq: 23 Jul 2021 22:08

**Instrument :**  
 BNA\_N  
**ClientSampled :**  
 COMP-BMSD

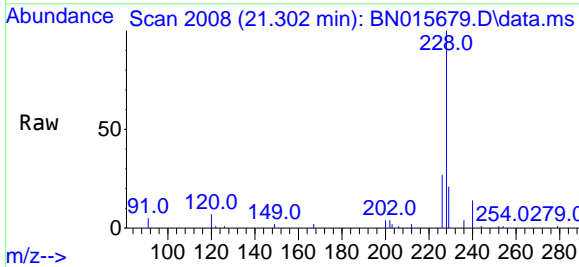


Tgt Ion:244 Resp: 86437  
 Ion Ratio Lower Upper  
 244 100  
 212 7.9 6.1 9.1  
 122 12.8 10.1 15.1

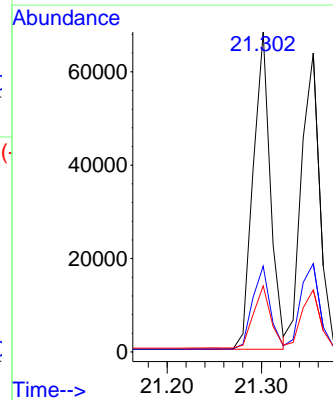
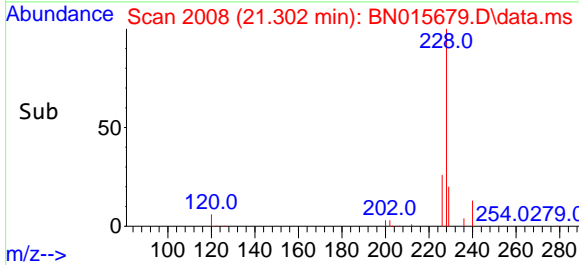
**Manual Integrations**  
**APPROVED**  
 mohammad  
 7/26/2021 1:28:18 PM

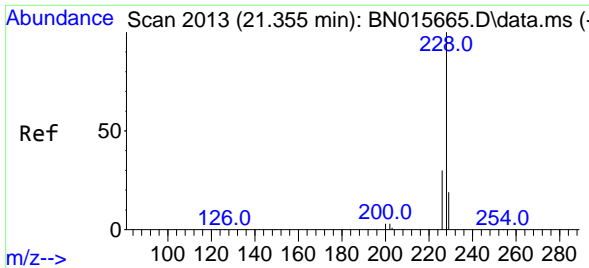


#32  
 Benzo(a)anthracene  
 Concen: 0.448 ng  
 RT: 21.302 min Scan# 2008  
 Delta R.T. -0.000 min  
 Lab File: BN015679.D  
 Acq: 23 Jul 2021 22:08



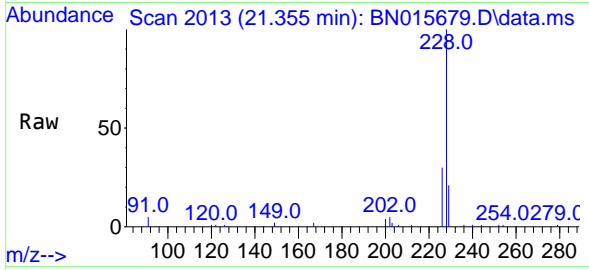
Tgt Ion:228 Resp: 86131  
 Ion Ratio Lower Upper  
 228 100  
 226 26.8 21.4 32.0  
 229 20.6 15.5 23.3





#33  
 Chrysene  
 Concen: 0.404 ng  
 RT: 21.355 min Scan# 2013  
 Delta R.T. -0.000 min  
 Lab File: BN015679.D  
 Acq: 23 Jul 2021 22:08

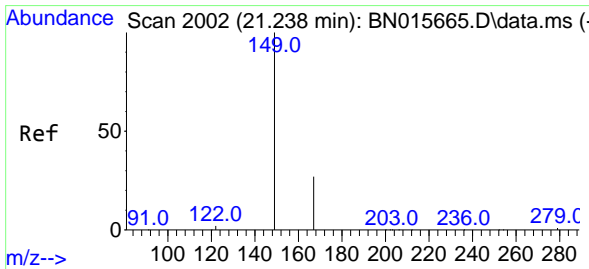
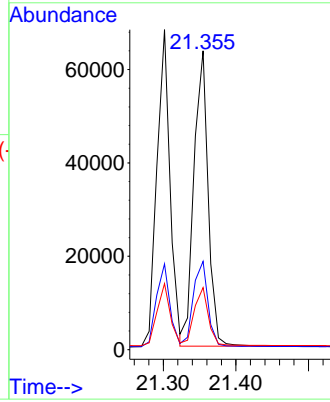
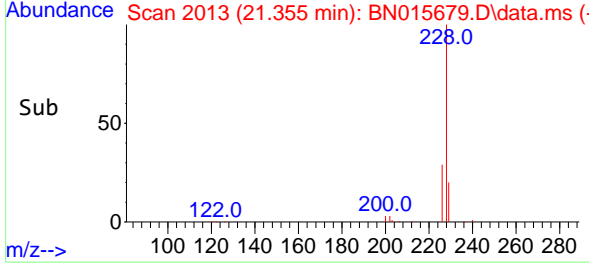
**Instrument :**  
 BNA\_N  
**ClientSampled :**  
 COMP-BMSD



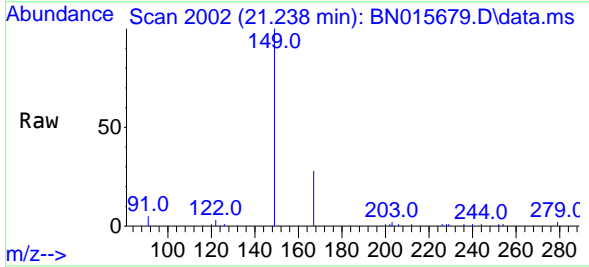
Tgt Ion: 228 Resp: 86083

Ion	Ratio	Lower	Upper
228	100		
226	29.6	23.5	35.3
229	20.8	15.6	23.4

**Manual Integrations**  
**APPROVED**  
 mohammad  
 7/26/2021 1:28:18 PM

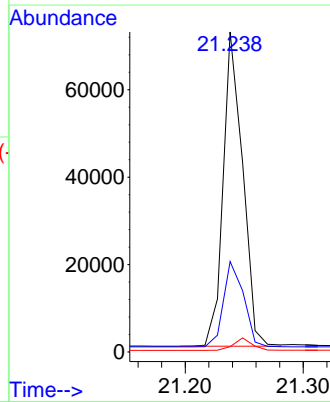
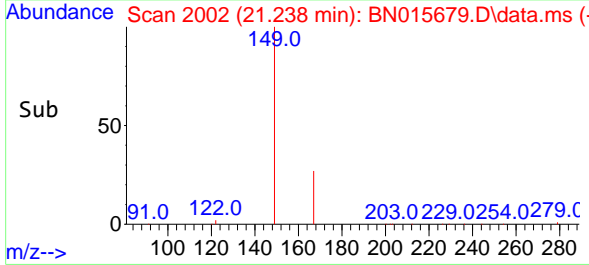


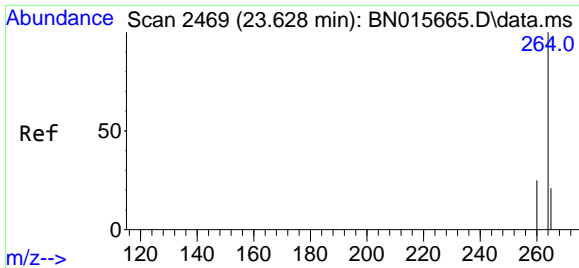
#34  
 Bis(2-ethylhexyl)phthalate  
 Concen: 1.084 ng  
 RT: 21.238 min Scan# 2002  
 Delta R.T. -0.000 min  
 Lab File: BN015679.D  
 Acq: 23 Jul 2021 22:08



Tgt Ion: 149 Resp: 82351

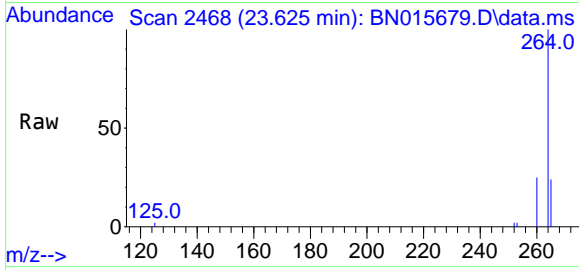
Ion	Ratio	Lower	Upper
149	100		
167	28.2	22.2	33.4
279	3.8	2.8	4.2





#35  
 Perylene-d12  
 Concen: 0.400 ng  
 RT: 23.625 min Scan# 2468  
 Delta R.T. -0.003 min  
 Lab File: BN015679.D  
 Acq: 23 Jul 2021 22:08

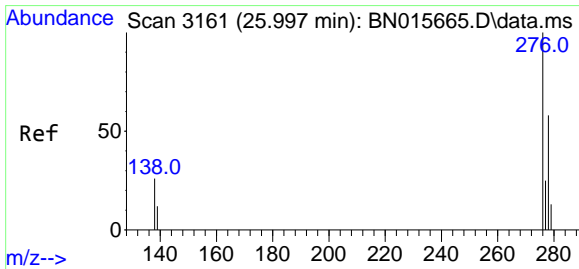
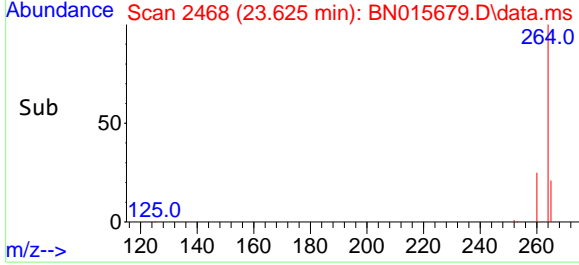
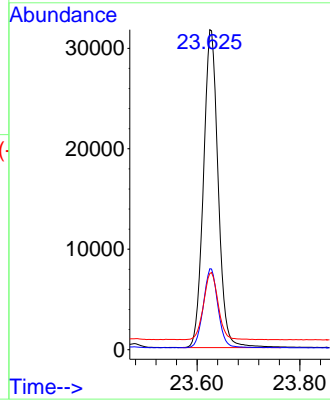
**Instrument :**  
 BNA\_N  
**ClientSampled :**  
 COMP-BMSD



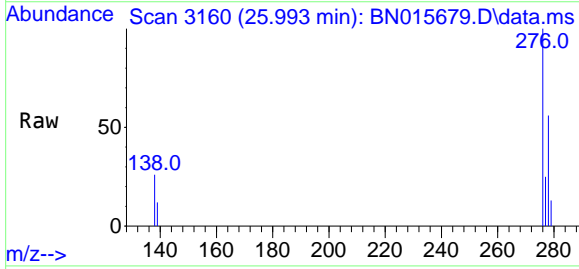
Tgt Ion:264 Resp: 62695

Ion	Ratio	Lower	Upper
264	100		
260	25.3	19.8	29.8
265	23.8	20.0	30.0

**Manual Integrations**  
**APPROVED**  
 mohammad  
 7/26/2021 1:28:18 PM

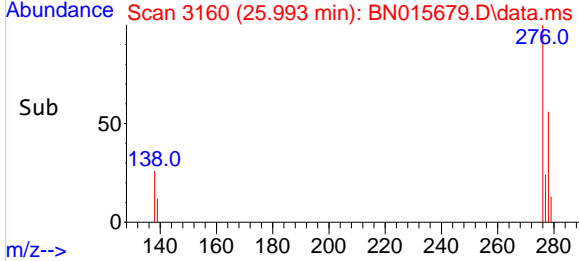
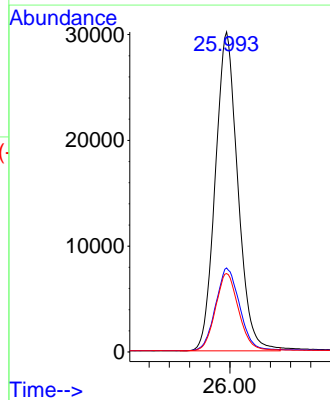


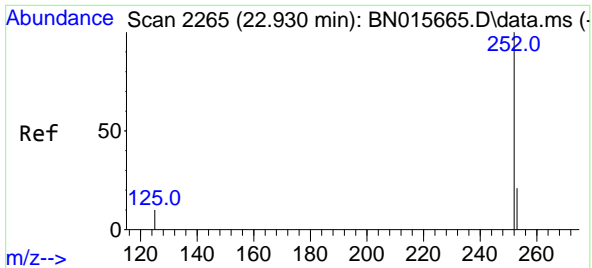
#36  
 Indeno(1,2,3-cd)pyrene  
 Concen: 0.410 ng  
 RT: 25.993 min Scan# 3160  
 Delta R.T. -0.003 min  
 Lab File: BN015679.D  
 Acq: 23 Jul 2021 22:08



Tgt Ion:276 Resp: 93174

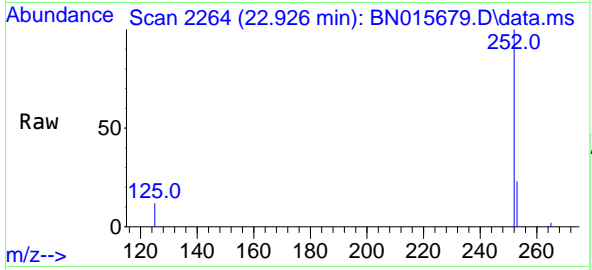
Ion	Ratio	Lower	Upper
276	100		
138	27.6	21.8	32.6
277	24.9	19.9	29.9





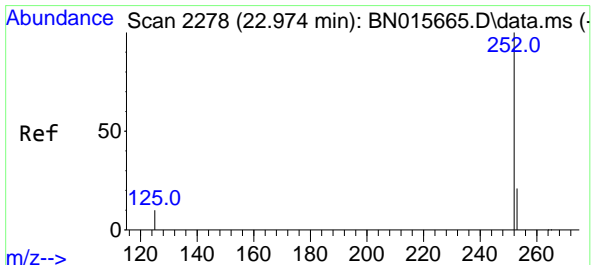
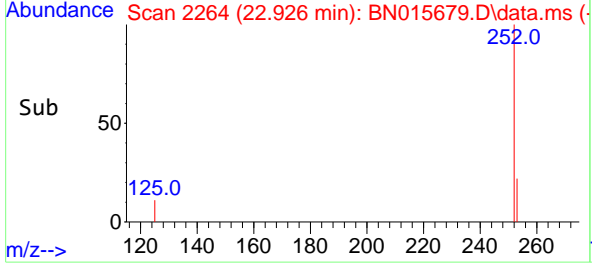
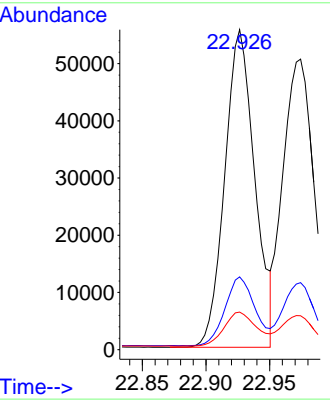
#37  
 Benzo(b)fluoranthene  
 Concen: 0.386 ng  
 RT: 22.926 min Scan# 2264  
 Delta R.T. -0.003 min  
 Lab File: BN015679.D  
 Acq: 23 Jul 2021 22:08

**Instrument :**  
 BNA\_N  
**ClientSampled :**  
 COMP-BMSD

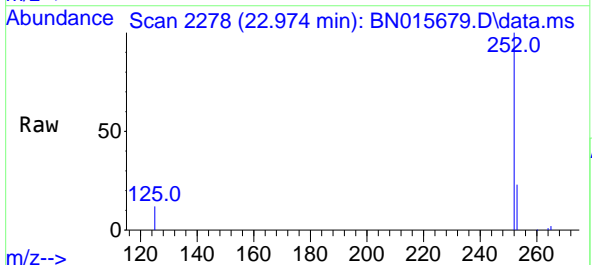


Tgt Ion:252 Resp: 90914  
 Ion Ratio Lower Upper  
 252 100  
 253 22.8 17.6 26.4  
 125 11.8 8.8 13.2

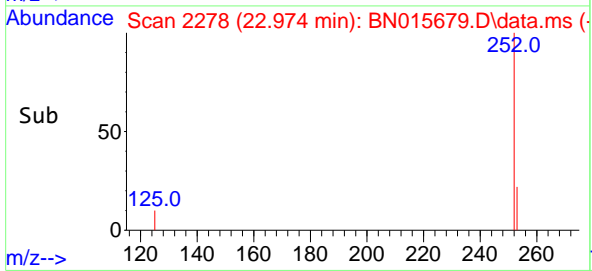
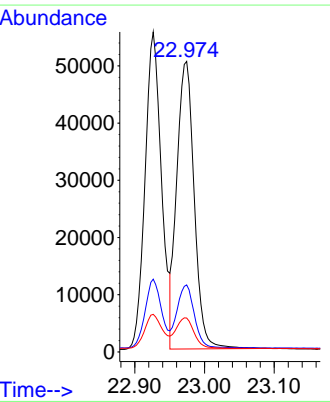
**Manual Integrations**  
**APPROVED**  
 mohammad  
 7/26/2021 1:28:18 PM

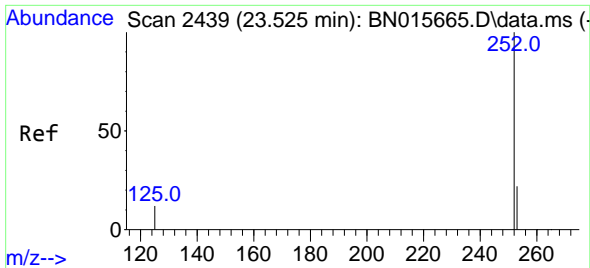


#38  
 Benzo(k)fluoranthene  
 Concen: 0.371 ng  
 RT: 22.974 min Scan# 2278  
 Delta R.T. -0.000 min  
 Lab File: BN015679.D  
 Acq: 23 Jul 2021 22:08



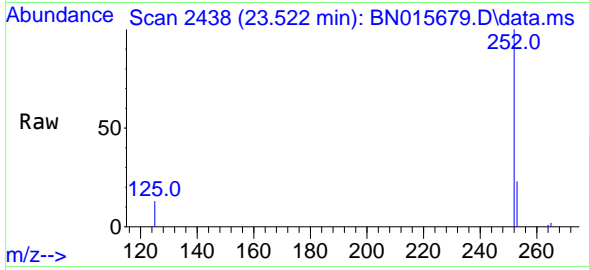
Tgt Ion:252 Resp: 87532  
 Ion Ratio Lower Upper  
 252 100  
 253 23.1 17.5 26.3  
 125 11.7 8.8 13.2





#39  
 Benzo(a)pyrene  
 Concen: 0.435 ng  
 RT: 23.522 min Scan# 2438  
 Delta R.T. -0.003 min  
 Lab File: BN015679.D  
 Acq: 23 Jul 2021 22:08

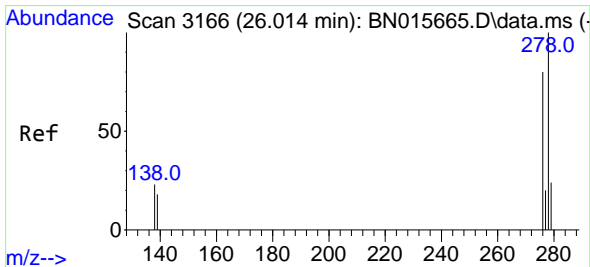
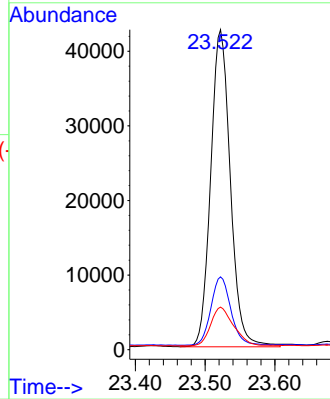
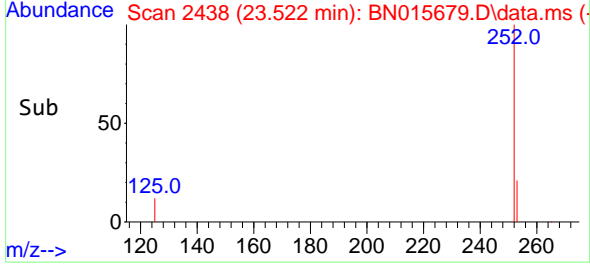
Instrument :  
 BNA\_N  
 ClientSampled :  
 COMP-BMSD



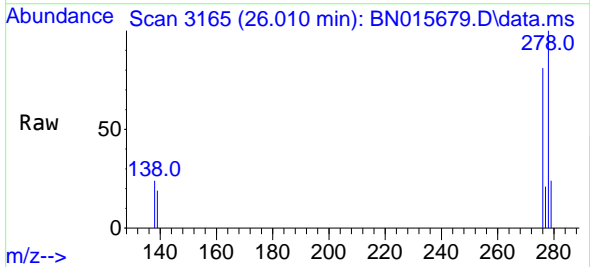
Tgt Ion:252 Resp: 83166  
 Ion Ratio Lower Upper  
 252 100  
 253 22.8 18.0 27.0  
 125 13.3 10.4 15.6

Manual Integrations  
 APPROVED

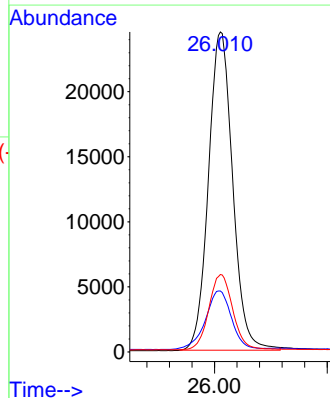
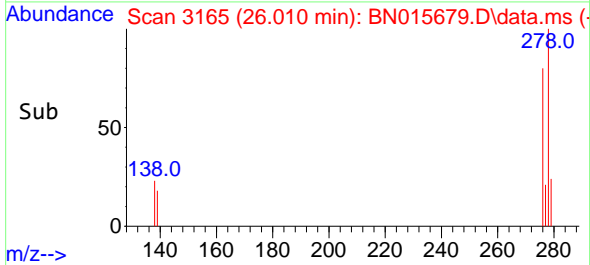
mohammad  
 7/26/2021 1:28:18 PM

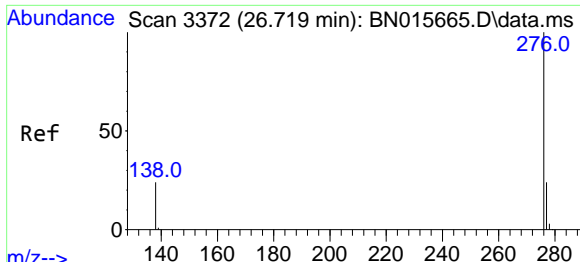


#40  
 Dibenzo(a,h)anthracene  
 Concen: 0.408 ng  
 RT: 26.010 min Scan# 3165  
 Delta R.T. -0.003 min  
 Lab File: BN015679.D  
 Acq: 23 Jul 2021 22:08



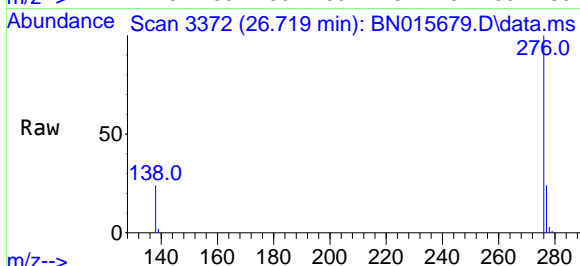
Tgt Ion:278 Resp: 72916  
 Ion Ratio Lower Upper  
 278 100  
 139 19.0 14.6 22.0  
 279 24.2 19.3 28.9





#41  
 Benzo(g,h,i)perylene  
 Concen: 0.395 ng  
 RT: 26.719 min Scan# 3372  
 Delta R.T. -0.000 min  
 Lab File: BN015679.D  
 Acq: 23 Jul 2021 22:08

**Instrument :**  
 BNA\_N  
**ClientSampled :**  
 COMP-BMSD



Tgt Ion: 276 Resp: 82109

Ion	Ratio	Lower	Upper
276	100		
277	24.1	19.1	28.7
138	23.9	19.1	28.7

**Manual Integrations**  
**APPROVED**  
 mohammad  
 7/26/2021 1:28:18 PM

