

Data Path : Z:\svoasrv\HPCHEM1\BNA\_N\Data\BN073121\  
 Data File : BN015752.D  
 Acq On : 01 Aug 2021 02:36  
 Operator : CG/JU  
 Sample : M2940-07  
 Misc : LOD-MDL-WTR-0.2ng  
 ALS Vial : 21 Sample Multiplier: 1

Instrument :  
 BNA\_N  
 ClientSampleId :  
 LOD-MDL-WATER-01-QT3-2021

Quant Time: Aug 02 04:31:55 2021  
 Quant Method : Z:\SVOASRV\HPCHEM1\BNA\_N\METHODS\8270-SIM-BN073021.M  
 Quant Title : ASP BNA STANDARDS FOR 5 POINT CALIBRATION  
 QLast Update : Mon Aug 02 04:24:05 2021  
 Response via : Initial Calibration

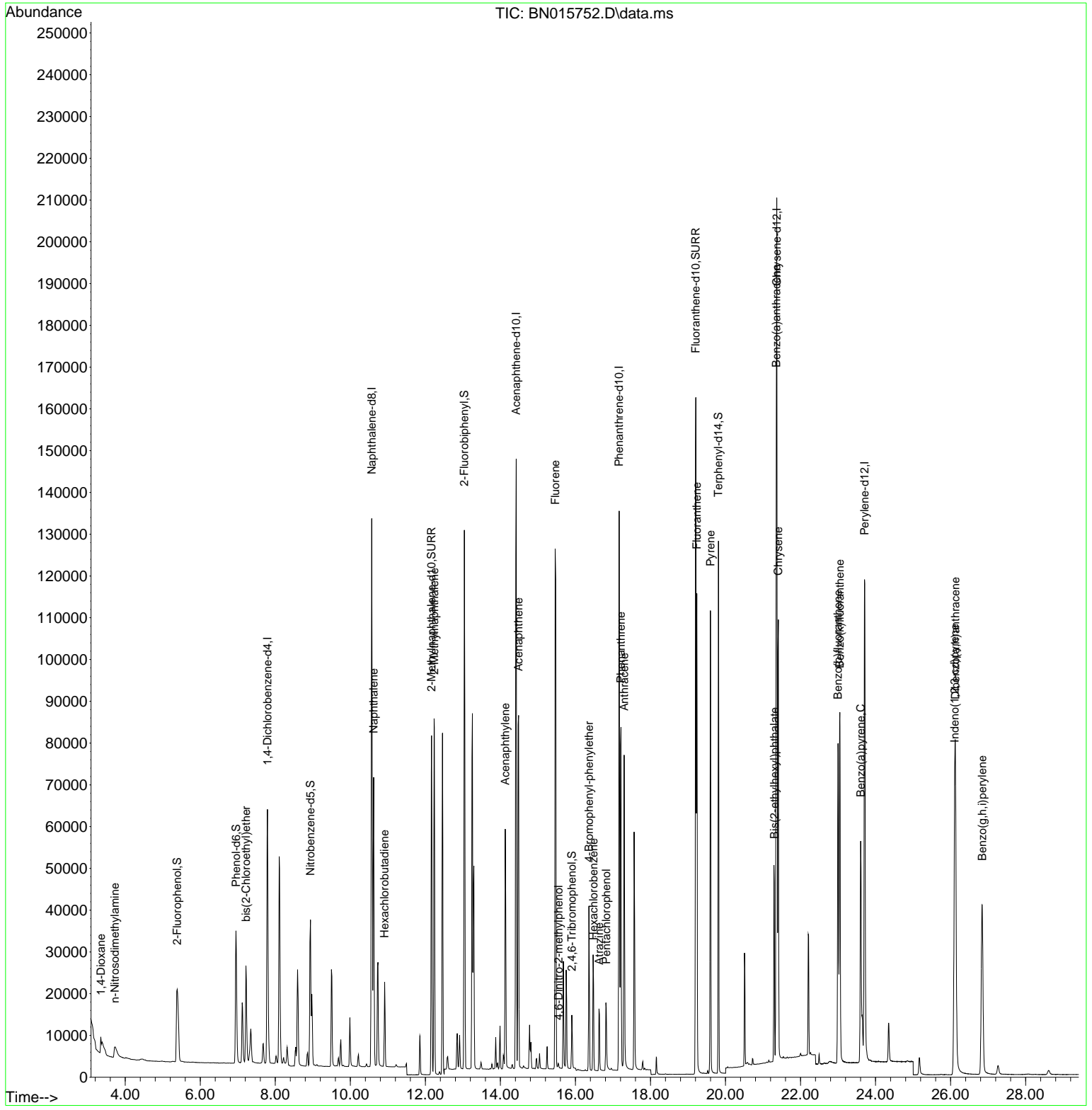
Compound	R.T.	QIon	Response	Conc	Units	Dev(Min)	
-----							
Internal Standards							
1) 1,4-Dichlorobenzene-d4	7.790	152	38331	0.400	ng	0.00	
7) Naphthalene-d8	10.572	136	172930	0.400	ng	0.00	
13) Acenaphthene-d10	14.421	164	91988	0.400	ng	0.00	
19) Phenanthrene-d10	17.164	188	172546	0.400	ng	# 0.00	
29) Chrysene-d12	21.366	240	159552	0.400	ng	#-0.01	
35) Perylene-d12	23.707	264	158878	0.400	ng	-0.01	
System Monitoring Compounds							
4) 2-Fluorophenol	5.383	112	34697	0.337	ng	0.00	
5) Phenol-d6	6.951	99	40234	0.323	ng	0.00	
8) Nitrobenzene-d5	8.937	82	31975	0.294	ng	0.00	
11) 2-Methylnaphthalene-d10	12.163	152	108962	0.418	ng	0.00	
14) 2,4,6-Tribromophenol	15.906	330	10074	0.253	ng	-0.01	
15) 2-Fluorobiphenyl	13.038	172	112494	0.320	ng	-0.01	
27) Fluoranthene-d10	19.207	212	180665	0.397	ng	0.00	
31) Terphenyl-d14	19.813	244	121753	0.314	ng	0.00	
Target Compounds							
2) 1,4-Dioxane	3.355	88	3129	0.237	ng	87	Qvalue
3) n-Nitrosodimethylamine	3.724	42	4314	0.169	ng	# 99	
6) bis(2-Chloroethyl)ether	7.218	93	22303	0.219	ng	100	
9) Naphthalene	10.622	128	92208	0.205	ng	100	
10) Hexachlorobutadiene	10.914	225	15995	0.202	ng	# 100	
12) 2-Methylnaphthalene	12.234	142	60407	0.206	ng	99	
16) Acenaphthylene	14.129	152	67225	0.166	ng	100	
17) Acenaphthene	14.485	154	49598	0.188	ng	99	
18) Fluorene	15.461	166	59532	0.186	ng	100	
20) 4,6-Dinitro-2-methylph...	15.550	198	1022	0.077	ng	# 79	
21) 4-Bromophenyl-phenylether	16.361	248	18588	0.185	ng	# 73	
22) Hexachlorobenzene	16.482	284	21982	0.197	ng	100	
23) Atrazine	16.628	200	13518	0.176	ng	# 92	
24) Pentachlorophenol	16.823	266	9470	0.227	ng	100	
25) Phenanthrene	17.212	178	96420	0.195	ng	100	
26) Anthracene	17.298	178	78858	0.177	ng	100	
28) Fluoranthene	19.237	202	100766	0.191	ng	100	
30) Pyrene	19.599	202	98568	0.185	ng	100	
32) Benzo(a)anthracene	21.355	228	87963	0.173	ng	98	
33) Chrysene	21.408	228	98305	0.190	ng	97	
34) Bis(2-ethylhexyl)phtha...	21.302	149	29060	0.108	ng	99	
36) Indeno(1,2,3-cd)pyrene	26.107	276	107467	0.188	ng	99	
37) Benzo(b)fluoranthene	22.999	252	99115	0.194	ng	100	
38) Benzo(k)fluoranthene	23.046	252	109394	0.199	ng	99	
39) Benzo(a)pyrene	23.604	252	85426	0.183	ng	99	
40) Dibenzo(a,h)anthracene	26.127	278	90913	0.188	ng	98	
41) Benzo(g,h,i)perylene	26.842	276	91793	0.184	ng	100	
-----							

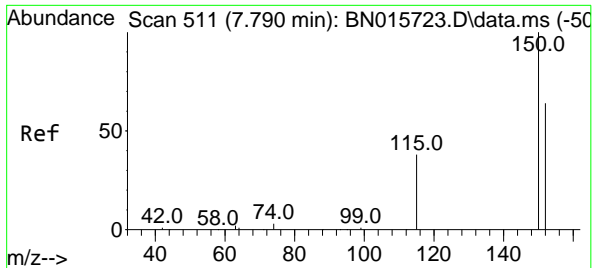
(#) = qualifier out of range (m) = manual integration (+) = signals summed

Data Path : Z:\svoasrv\HPCHEM1\BNA\_N\Data\BN073121\  
 Data File : BN015752.D  
 Acq On : 01 Aug 2021 02:36  
 Operator : CG/JU  
 Sample : M2940-07  
 Misc : LOD-MDL-WTR-0.2ng  
 ALS Vial : 21 Sample Multiplier: 1

Instrument :  
 BNA\_N  
 Client Sample ID :  
 LOD-MDL-WATER-01-QT3-2021

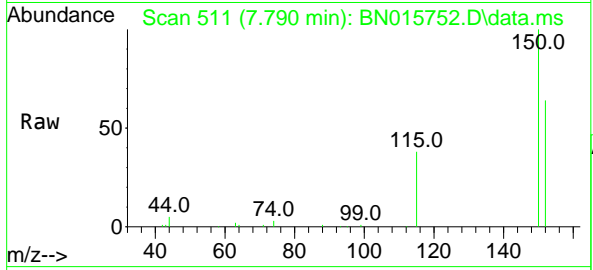
Quant Time: Aug 02 04:31:55 2021  
 Quant Method : Z:\SVOASRV\HPCHEM1\BNA\_N\METHODS\8270-SIM-BN073021.M  
 Quant Title : ASP BNA STANDARDS FOR 5 POINT CALIBRATION  
 QLast Update : Mon Aug 02 04:24:05 2021  
 Response via : Initial Calibration



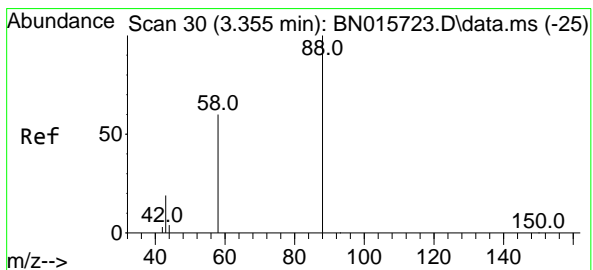
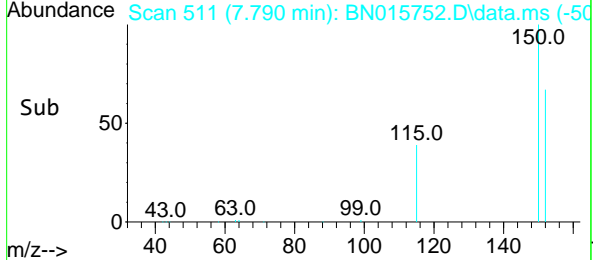
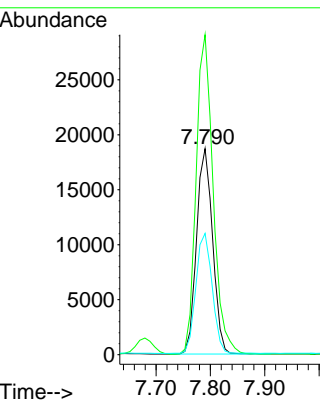


#1  
 1,4-Dichlorobenzene-d4  
 Concen: 0.400 ng  
 RT: 7.790 min Scan# 511  
 Delta R.T. 0.000 min  
 Lab File: BN015752.D  
 Acq: 01 Aug 2021 02:36

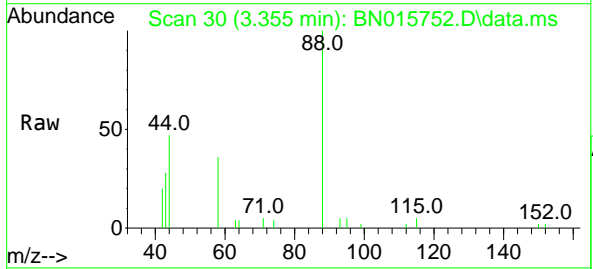
**Instrument :**  
 BNA\_N  
**ClientSampleId :**  
 LOD-MDL-WATER-01-QT3-2021



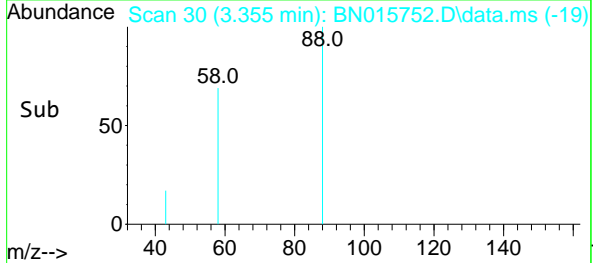
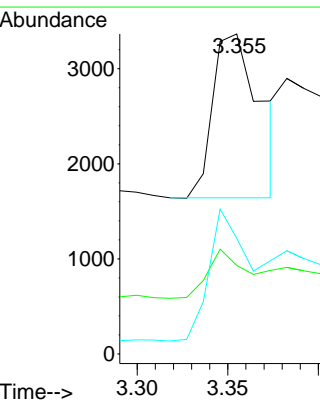
Tgt Ion:152 Resp: 38331  
 Ion Ratio Lower Upper  
 152 100  
 150 155.3 123.9 185.9  
 115 58.9 47.8 71.6

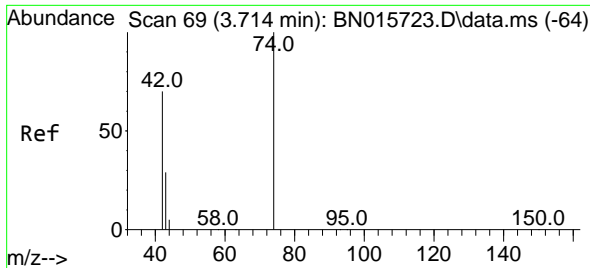


#2  
 1,4-Dioxane  
 Concen: 0.237 ng  
 RT: 3.355 min Scan# 30  
 Delta R.T. 0.000 min  
 Lab File: BN015752.D  
 Acq: 01 Aug 2021 02:36



Tgt Ion: 88 Resp: 3129  
 Ion Ratio Lower Upper  
 88 100  
 43 23.2 17.2 25.8  
 58 64.3 62.2 93.2

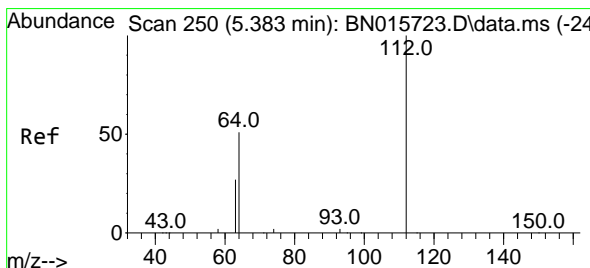
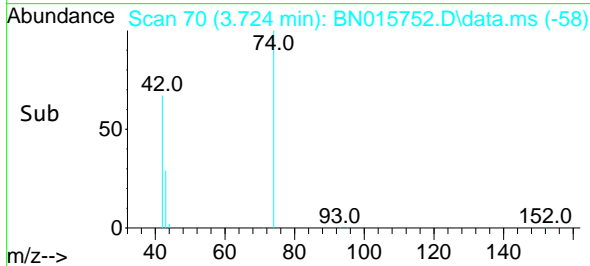
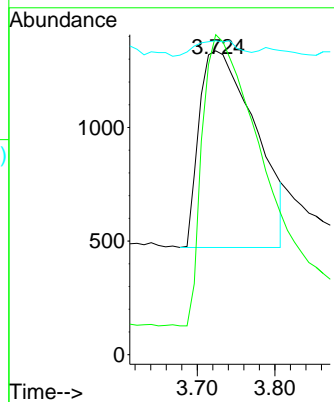
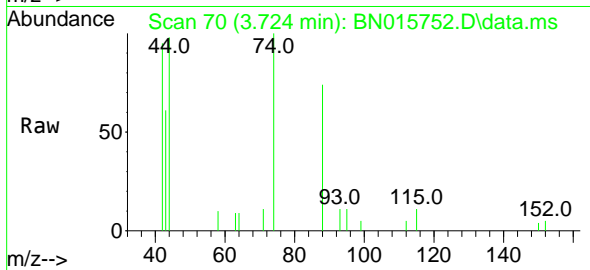




#3  
 n-Nitrosodimethylamine  
 Concen: 0.169 ng  
 RT: 3.724 min Scan# 70  
 Delta R.T. 0.010 min  
 Lab File: BN015752.D  
 Acq: 01 Aug 2021 02:36

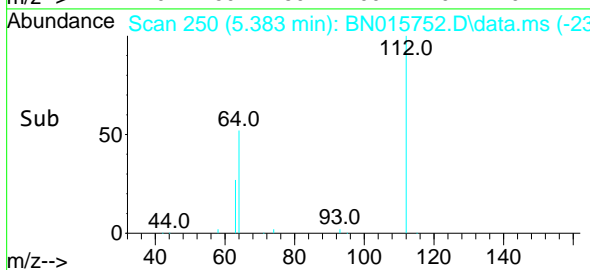
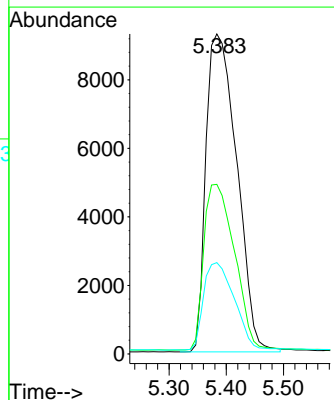
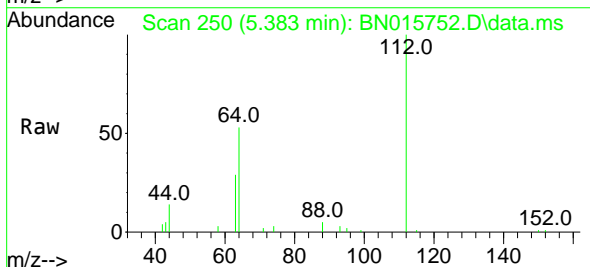
Instrument :  
 BNA\_N  
 ClientSampled :  
 LOD-MDL-WATER-01-QT3-2021

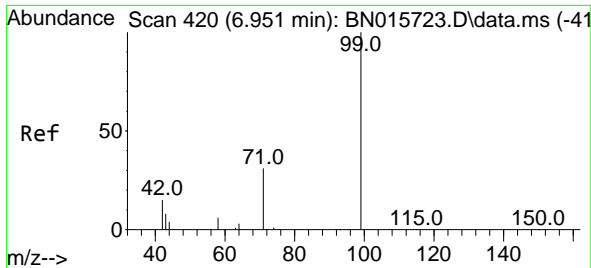
Tgt Ion: 42 Resp: 4314  
 Ion Ratio Lower Upper  
 42 100  
 74 146.5 116.6 174.8  
 44 6.0 6.6 10.0#



#4  
 2-Fluorophenol  
 Concen: 0.337 ng  
 RT: 5.383 min Scan# 250  
 Delta R.T. 0.000 min  
 Lab File: BN015752.D  
 Acq: 01 Aug 2021 02:36

Tgt Ion: 112 Resp: 34697  
 Ion Ratio Lower Upper  
 112 100  
 64 52.1 42.1 63.1  
 63 27.4 21.9 32.9

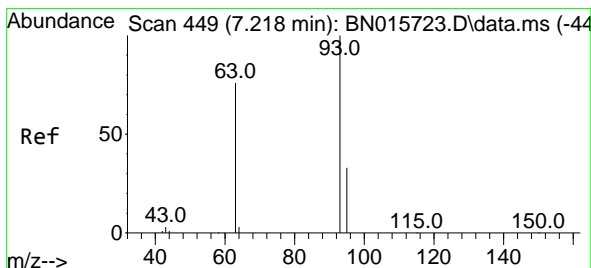
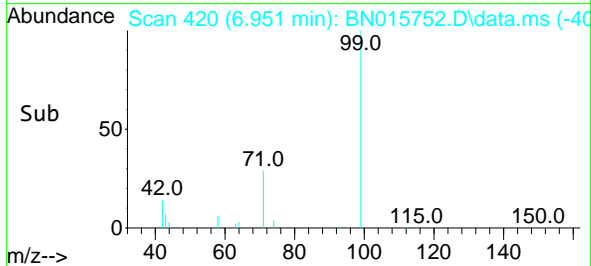
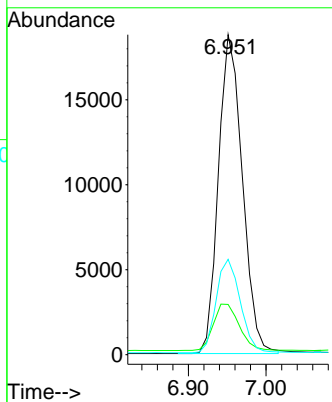
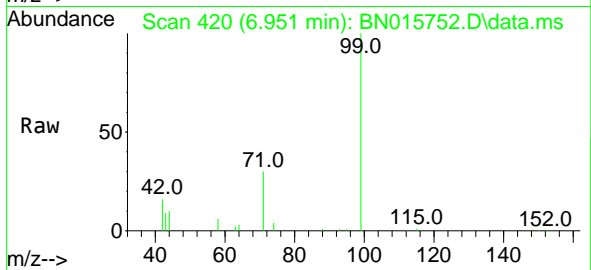




#5  
 Phenol-d6  
 Concen: 0.323 ng  
 RT: 6.951 min Scan# 420  
 Delta R.T. 0.000 min  
 Lab File: BN015752.D  
 Acq: 01 Aug 2021 02:36

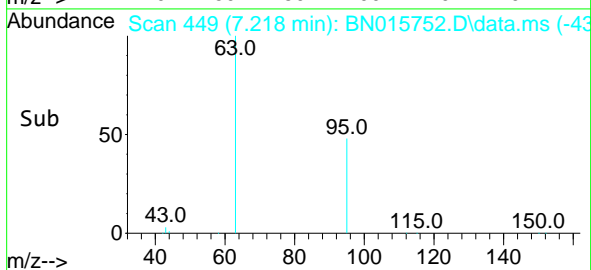
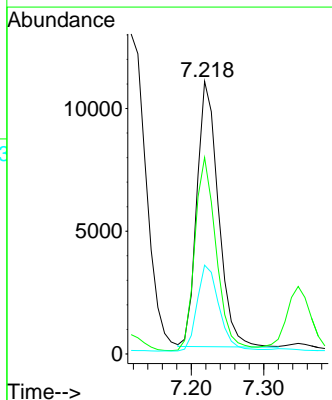
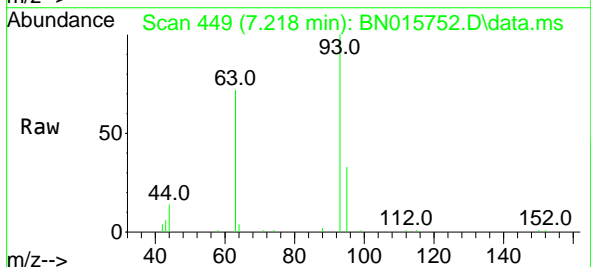
Instrument :  
 BNA\_N  
 ClientSampleId :  
 LOD-MDL-WATER-01-QT3-2021

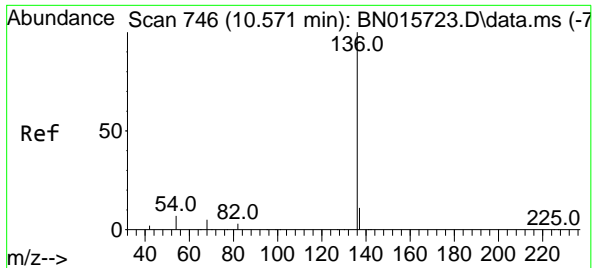
Tgt Ion	Resp	Lower	Upper
99	40234		
42	15.8	12.9	19.3
71	29.6	23.8	35.6



#6  
 bis(2-Chloroethyl)ether  
 Concen: 0.219 ng  
 RT: 7.218 min Scan# 449  
 Delta R.T. 0.000 min  
 Lab File: BN015752.D  
 Acq: 01 Aug 2021 02:36

Tgt Ion	Resp	Lower	Upper
93	22303		
63	72.9	58.6	87.8
95	33.3	26.9	40.3



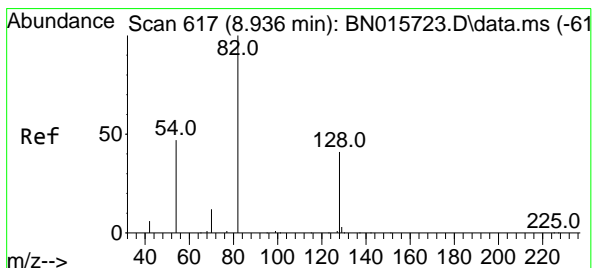
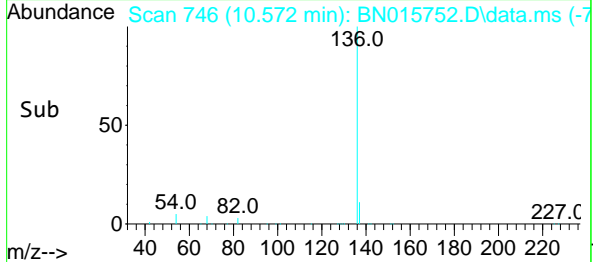
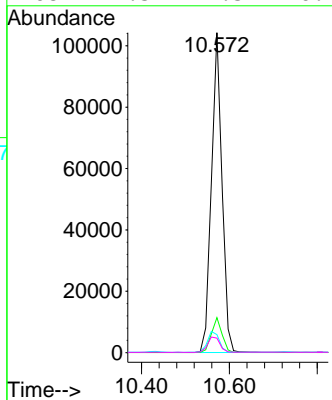
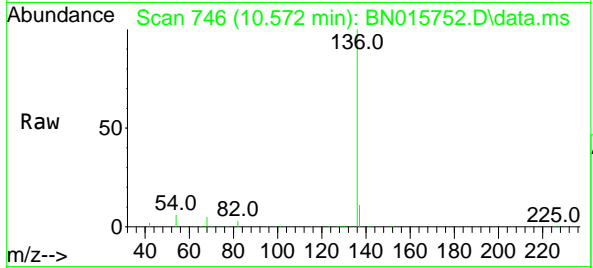


#7  
 Naphthalene-d8  
 Concen: 0.400 ng  
 RT: 10.572 min Scan# 746  
 Delta R.T. 0.000 min  
 Lab File: BN015752.D  
 Acq: 01 Aug 2021 02:36

**Instrument :**  
 BNA\_N  
**ClientSampled :**  
 LOD-MDL-WATER-01-QT3-2021

Tgt Ion:136 Resp: 172930

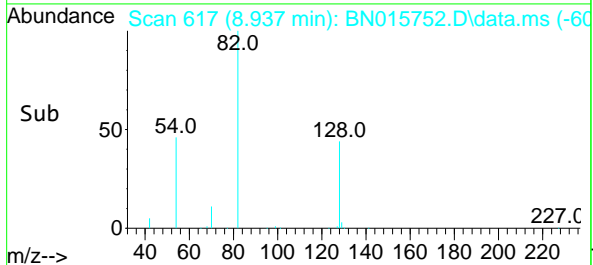
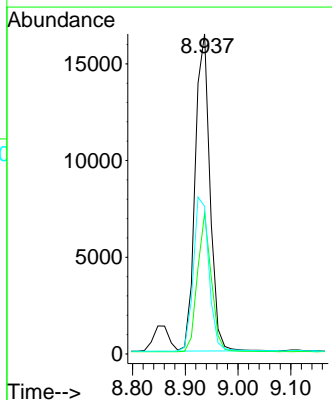
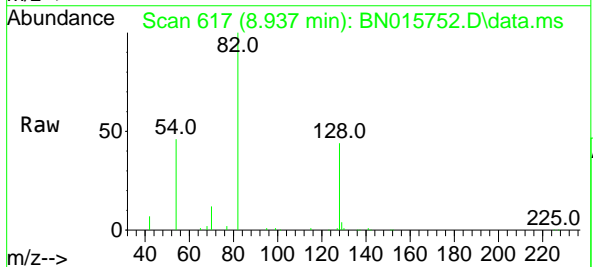
Ion	Ratio	Lower	Upper
136	100		
137	10.9	8.7	13.1
54	5.6	5.5	8.3
68	4.5	4.5	6.7

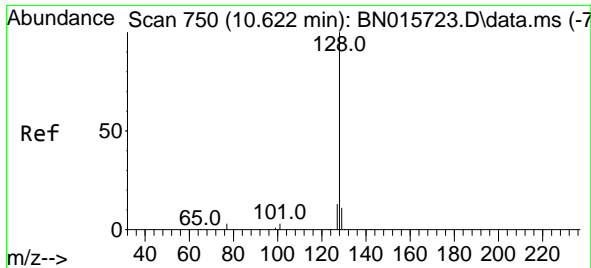


#8  
 Nitrobenzene-d5  
 Concen: 0.294 ng  
 RT: 8.937 min Scan# 617  
 Delta R.T. 0.000 min  
 Lab File: BN015752.D  
 Acq: 01 Aug 2021 02:36

Tgt Ion: 82 Resp: 31975

Ion	Ratio	Lower	Upper
82	100		
128	43.9	33.2	49.8
54	46.1	38.4	57.6



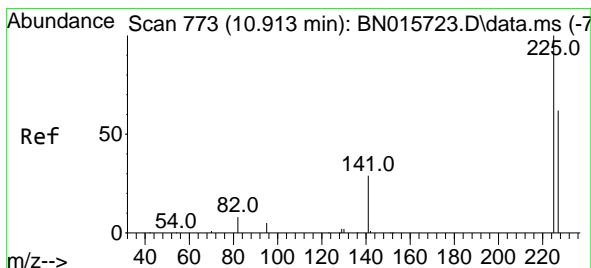
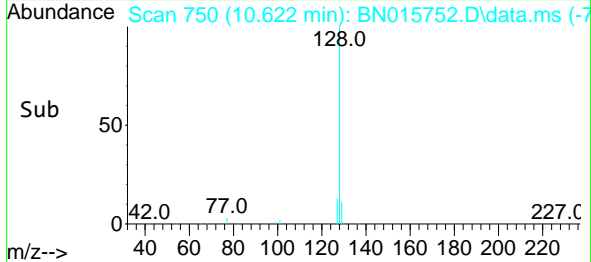
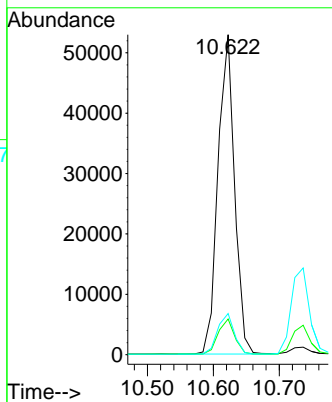
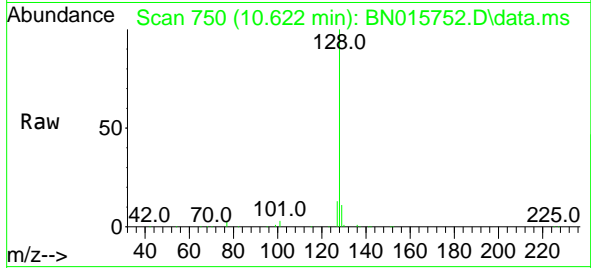


#9  
 Naphthalene  
 Concen: 0.205 ng  
 RT: 10.622 min Scan# 750  
 Delta R.T. 0.000 min  
 Lab File: BN015752.D  
 Acq: 01 Aug 2021 02:36

Instrument :  
 BNA\_N  
 ClientSampled :  
 LOD-MDL-WATER-01-QT3-2021

Tgt Ion:128 Resp: 92208

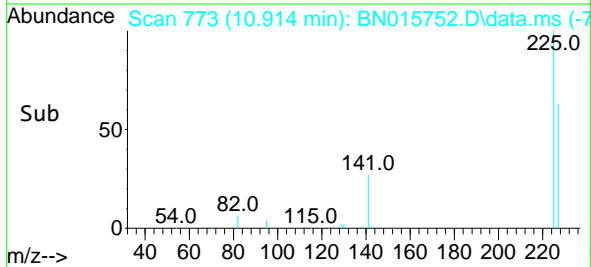
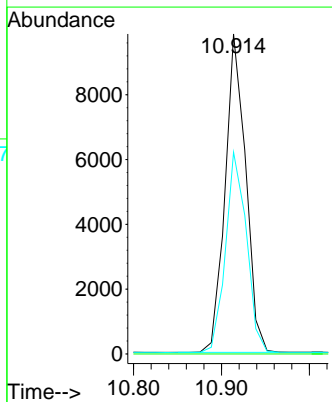
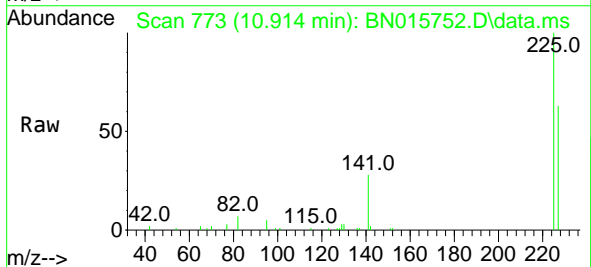
Ion	Ratio	Lower	Upper
128	100		
129	11.2	8.9	13.3
127	12.9	10.4	15.6

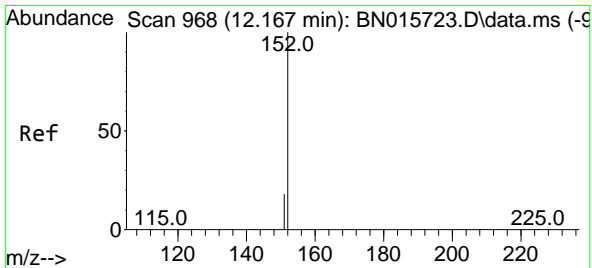


#10  
 Hexachlorobutadiene  
 Concen: 0.202 ng  
 RT: 10.914 min Scan# 773  
 Delta R.T. 0.000 min  
 Lab File: BN015752.D  
 Acq: 01 Aug 2021 02:36

Tgt Ion:225 Resp: 15995

Ion	Ratio	Lower	Upper
225	100		
223	0.0	0.0	0.0
227	64.0	51.0	76.4

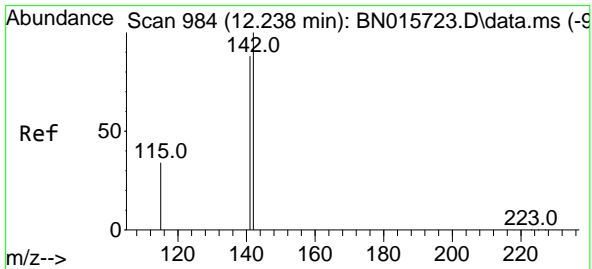
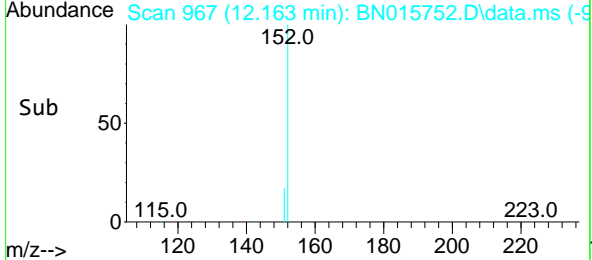
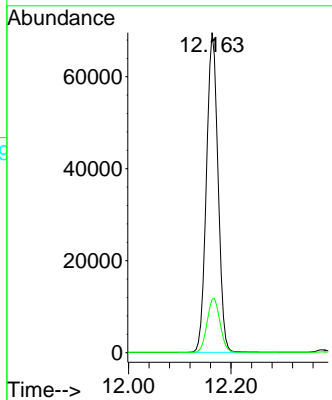
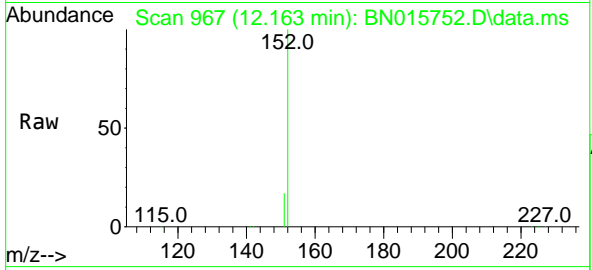




#11  
 2-Methylnaphthalene-d10  
 Concen: 0.418 ng  
 RT: 12.163 min Scan# 967  
 Delta R.T. -0.004 min  
 Lab File: BN015752.D  
 Acq: 01 Aug 2021 02:36

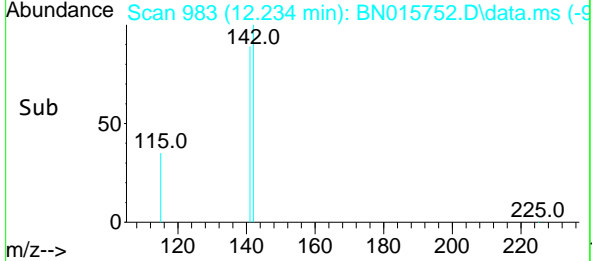
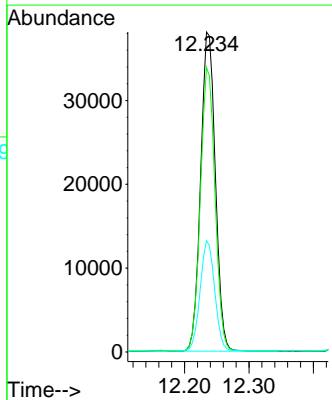
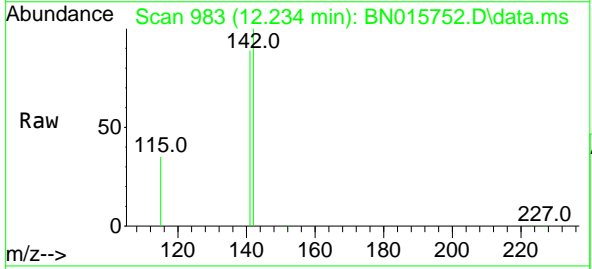
**Instrument :**  
 BNA\_N  
**ClientSampled :**  
 LOD-MDL-WATER-01-QT3-2021

Tgt Ion:152 Resp: 108962  
 Ion Ratio Lower Upper  
 152 100  
 151 18.9 16.2 24.4

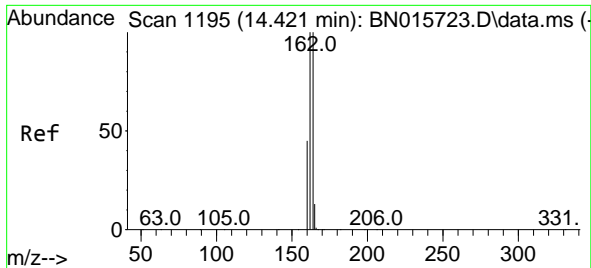


#12  
 2-Methylnaphthalene  
 Concen: 0.206 ng  
 RT: 12.234 min Scan# 983  
 Delta R.T. -0.004 min  
 Lab File: BN015752.D  
 Acq: 01 Aug 2021 02:36

Tgt Ion:142 Resp: 60407  
 Ion Ratio Lower Upper  
 142 100  
 141 89.0 70.5 105.7  
 115 34.8 27.3 40.9



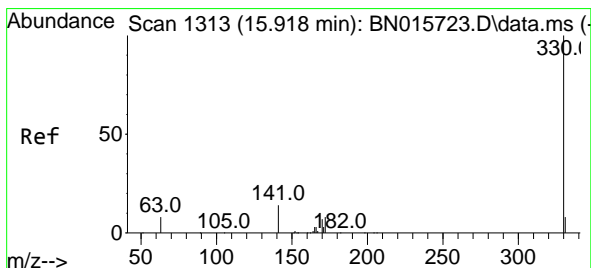
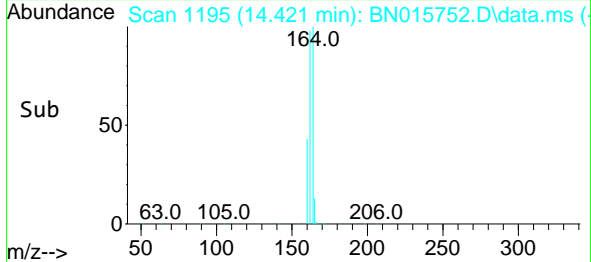
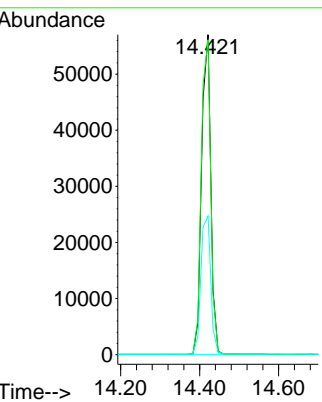
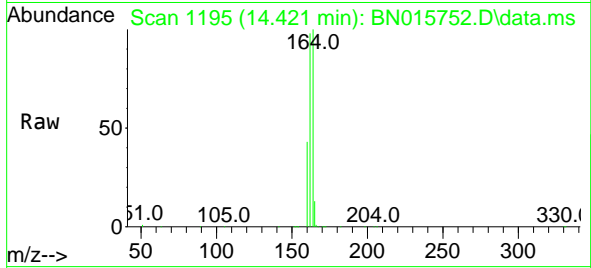




#13  
 Acenaphthene-d10  
 Concen: 0.400 ng  
 RT: 14.421 min Scan# 1195  
 Delta R.T. 0.000 min  
 Lab File: BN015752.D  
 Acq: 01 Aug 2021 02:36

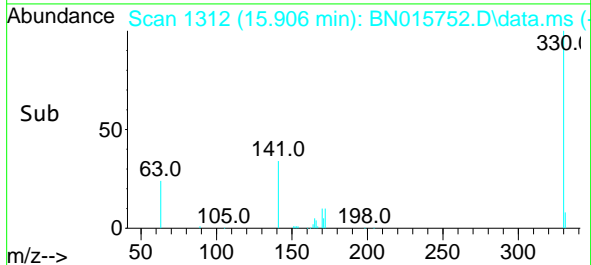
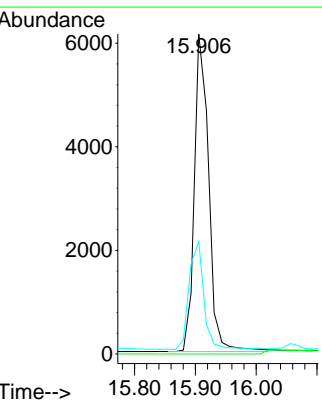
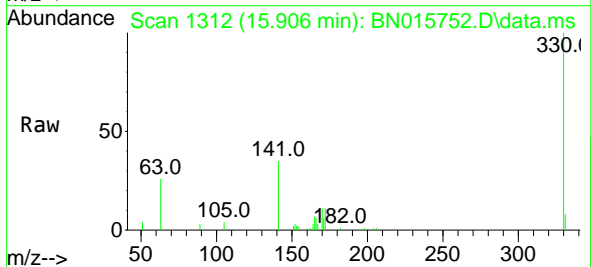
**Instrument :**  
 BNA\_N  
**ClientSampled :**  
 LOD-MDL-WATER-01-QT3-2021

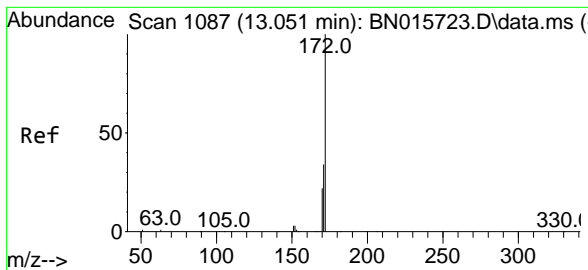
Tgt Ion	Resp	Lower	Upper
164	100		
162	98.4	79.8	119.6
160	43.3	35.8	53.6



#14  
 2,4,6-Tribromophenol  
 Concen: 0.253 ng  
 RT: 15.906 min Scan# 1312  
 Delta R.T. -0.012 min  
 Lab File: BN015752.D  
 Acq: 01 Aug 2021 02:36

Tgt Ion	Resp	Lower	Upper
330	100		
332	0.0	0.0	0.0
141	35.0	28.8	43.2



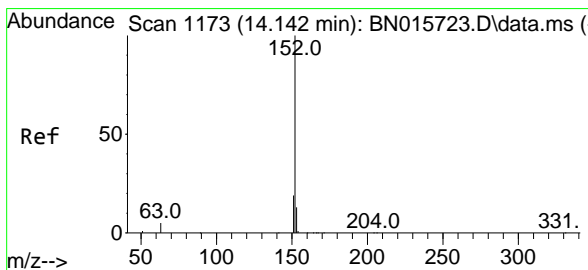
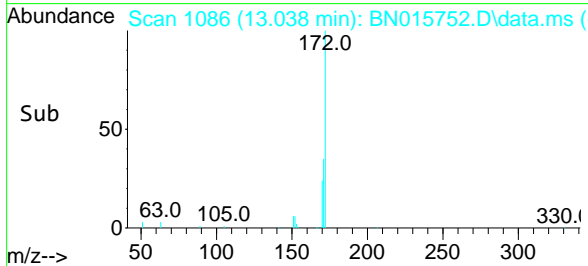
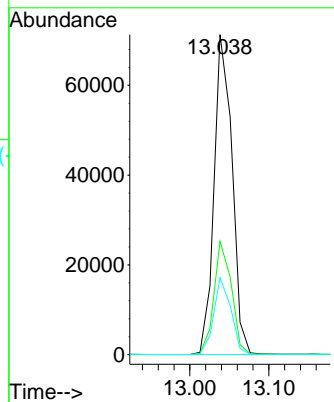
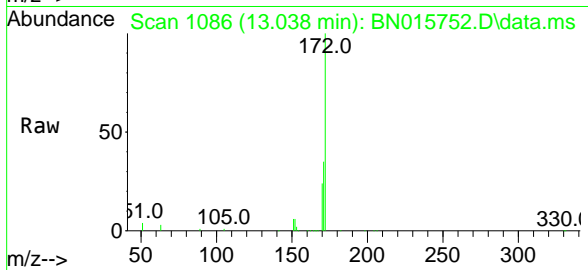


#15  
 2-Fluorobiphenyl  
 Concen: 0.320 ng  
 RT: 13.038 min Scan# 1086  
 Delta R.T. -0.012 min  
 Lab File: BN015752.D  
 Acq: 01 Aug 2021 02:36

**Instrument :**  
 BNA\_N  
**ClientSampleId :**  
 LOD-MDL-WATER-01-QT3-2021

Tgt Ion:172 Resp: 112494

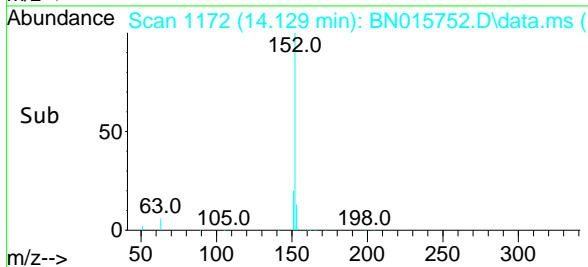
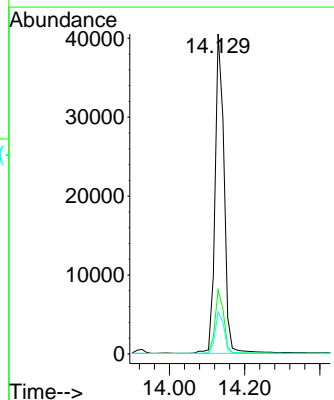
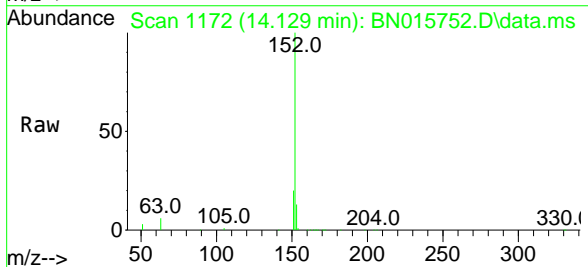
Ion	Ratio	Lower	Upper
172	100		
171	35.4	26.9	40.3
170	24.0	17.4	26.0

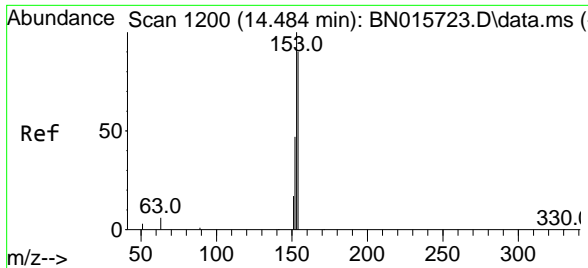


#16  
 Acenaphthylene  
 Concen: 0.166 ng  
 RT: 14.129 min Scan# 1172  
 Delta R.T. -0.013 min  
 Lab File: BN015752.D  
 Acq: 01 Aug 2021 02:36

Tgt Ion:152 Resp: 67225

Ion	Ratio	Lower	Upper
152	100		
151	19.6	15.7	23.5
153	13.0	10.4	15.6



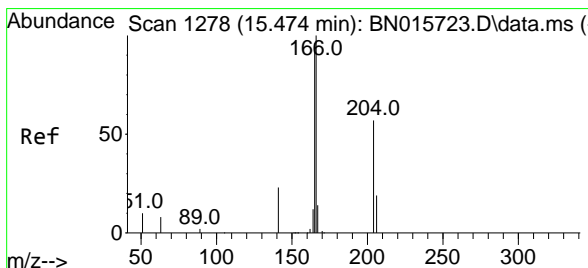
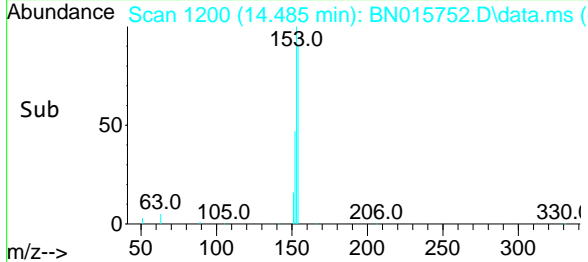
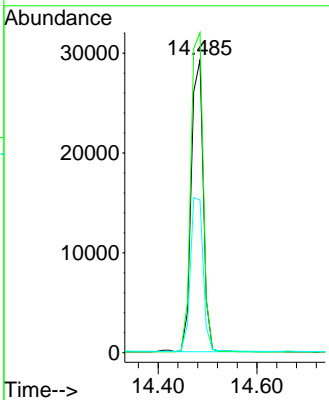
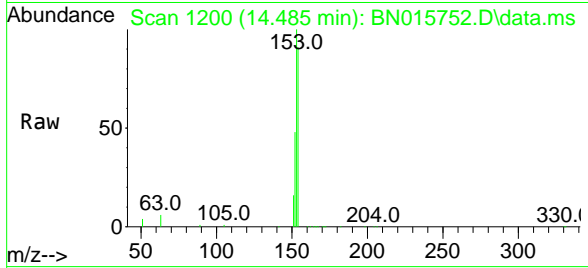


#17  
 Acenaphthene  
 Concen: 0.188 ng  
 RT: 14.485 min Scan# 1200  
 Delta R.T. 0.001 min  
 Lab File: BN015752.D  
 Acq: 01 Aug 2021 02:36

**Instrument :**  
 BNA\_N  
**ClientSampled :**  
 LOD-MDL-WATER-01-QT3-2021

Tgt Ion:154 Resp: 49598

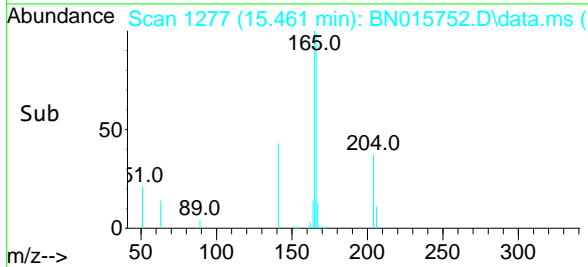
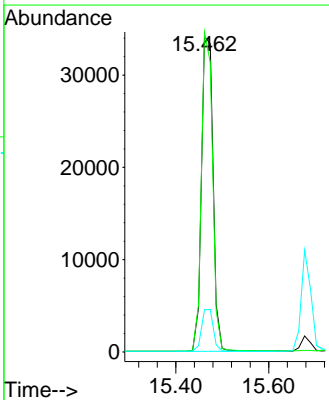
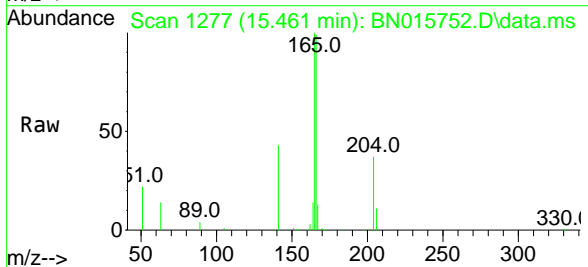
Ion	Ratio	Lower	Upper
154	100		
153	112.5	89.7	134.5
152	55.6	43.8	65.6

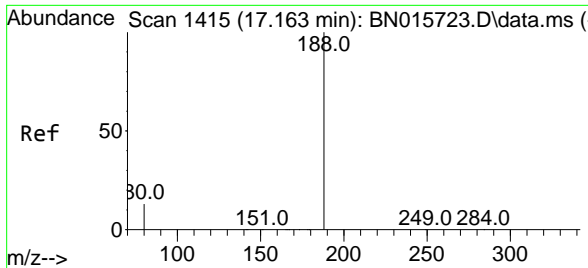


#18  
 Fluorene  
 Concen: 0.186 ng  
 RT: 15.461 min Scan# 1277  
 Delta R.T. -0.012 min  
 Lab File: BN015752.D  
 Acq: 01 Aug 2021 02:36

Tgt Ion:166 Resp: 59532

Ion	Ratio	Lower	Upper
166	100		
165	97.6	78.1	117.1
167	13.4	10.8	16.2



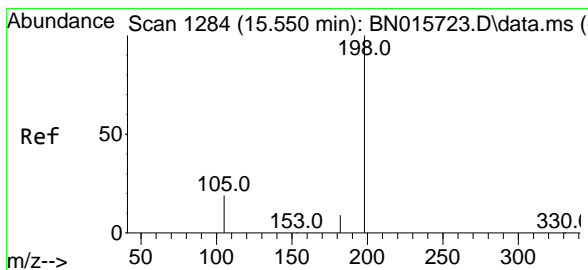
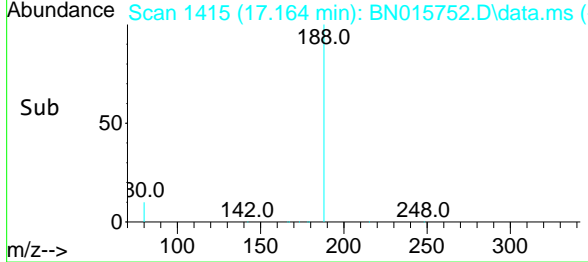
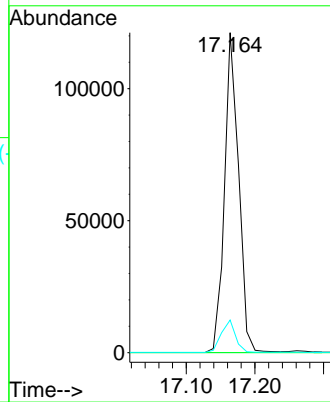
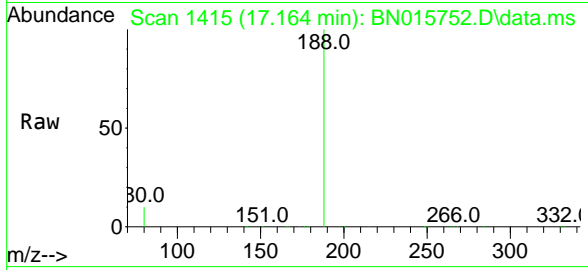


#19  
 Phenanthrene-d10  
 Concen: 0.400 ng  
 RT: 17.164 min Scan# 1415  
 Delta R.T. 0.001 min  
 Lab File: BN015752.D  
 Acq: 01 Aug 2021 02:36

**Instrument :**  
 BNA\_N  
**ClientSampleId :**  
 LOD-MDL-WATER-01-QT3-2021

Tgt Ion:188 Resp: 172546

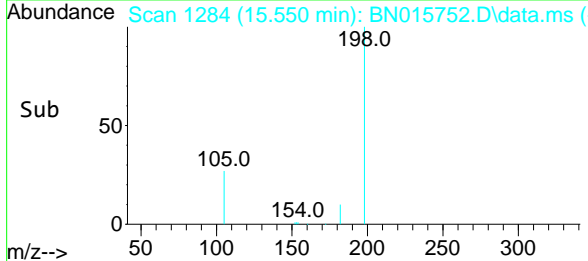
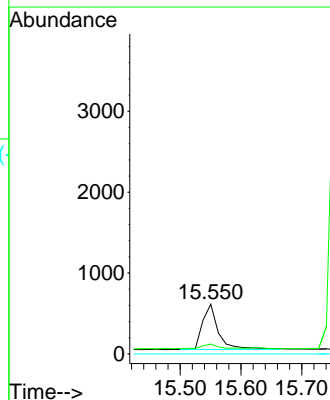
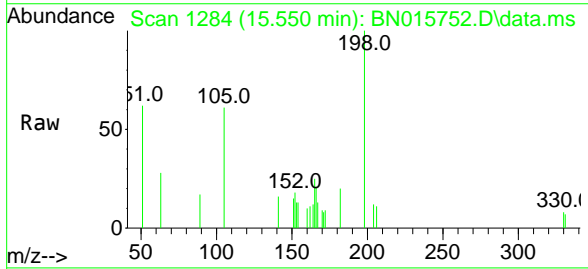
Ion	Ratio	Lower	Upper
188	100		
94	0.0	0.0	0.0
80	10.2	10.2	15.4#

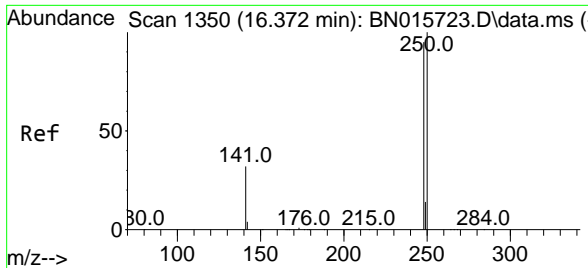


#20  
 4,6-Dinitro-2-methylphenol  
 Concen: 0.077 ng  
 RT: 15.550 min Scan# 1284  
 Delta R.T. 0.000 min  
 Lab File: BN015752.D  
 Acq: 01 Aug 2021 02:36

Tgt Ion:198 Resp: 1022

Ion	Ratio	Lower	Upper
198	100		
182	19.8	9.4	14.0#
77	0.0	0.0	0.0

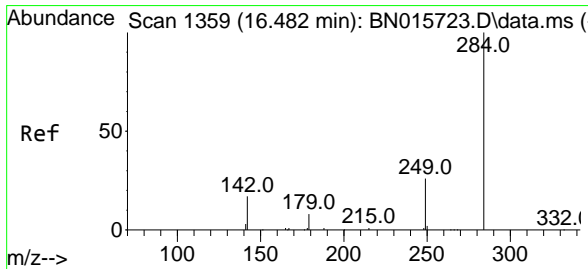
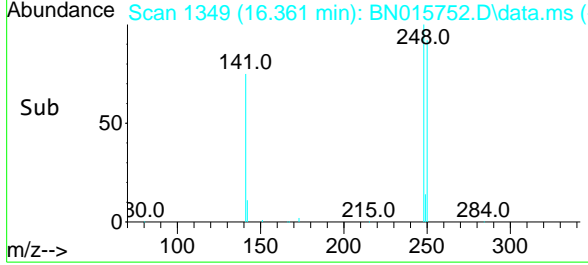
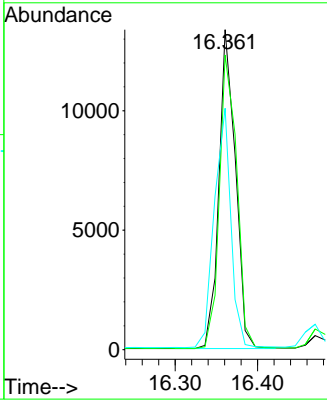
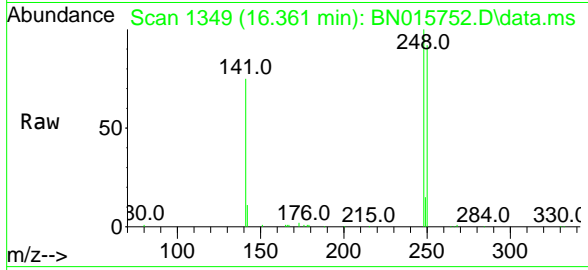




#21  
 4-Bromophenyl-phenylether  
 Concen: 0.185 ng  
 RT: 16.361 min Scan# 1349  
 Delta R.T. -0.012 min  
 Lab File: BN015752.D  
 Acq: 01 Aug 2021 02:36

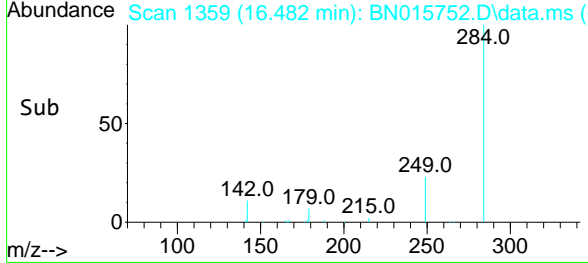
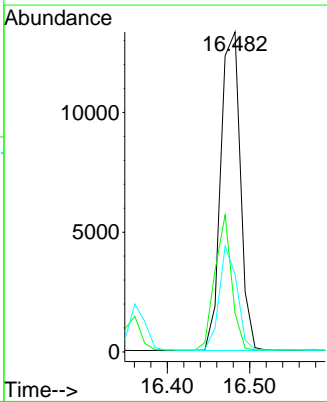
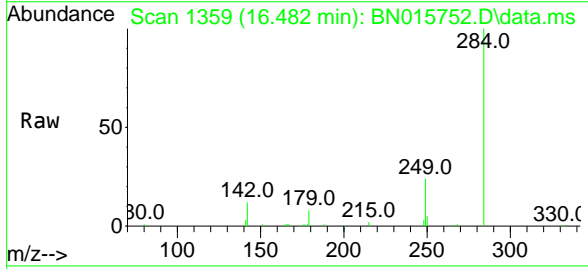
**Instrument :**  
 BNA\_N  
**ClientSampled :**  
 LOD-MDL-WATER-01-QT3-2021

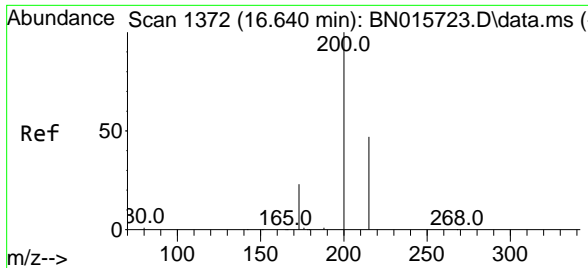
Tgt Ion	Resp	Lower	Upper
248	18588		
248	100		
250	92.1	83.9	125.9
141	75.4	26.9	40.3#



#22  
 Hexachlorobenzene  
 Concen: 0.197 ng  
 RT: 16.482 min Scan# 1359  
 Delta R.T. 0.000 min  
 Lab File: BN015752.D  
 Acq: 01 Aug 2021 02:36

Tgt Ion	Resp	Lower	Upper
284	21982		
284	100		
142	36.4	29.4	44.0
249	29.6	23.8	35.6



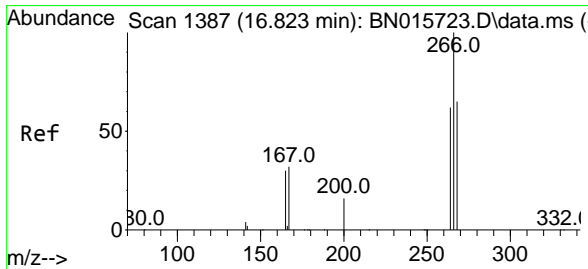
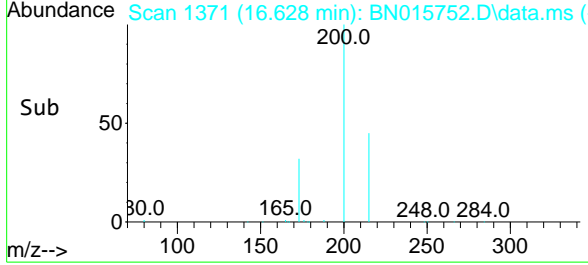
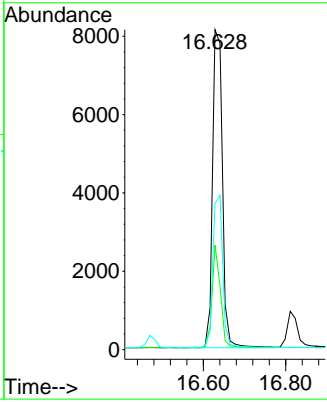
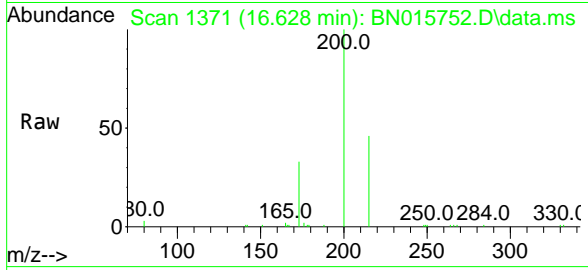


#23  
 Atrazine  
 Concen: 0.176 ng  
 RT: 16.628 min Scan# 1371  
 Delta R.T. -0.012 min  
 Lab File: BN015752.D  
 Acq: 01 Aug 2021 02:36

**Instrument :**  
 BNA\_N  
**ClientSampleId :**  
 LOD-MDL-WATER-01-QT3-2021

Tgt Ion:200 Resp: 13518

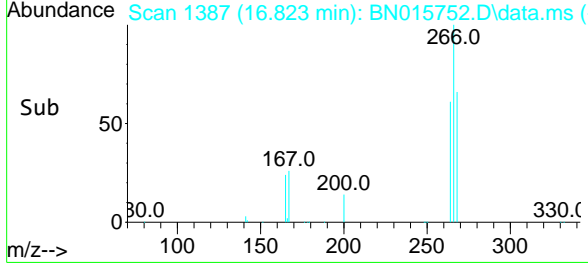
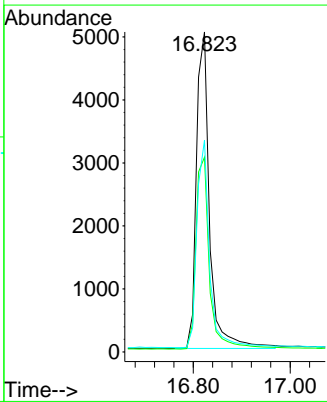
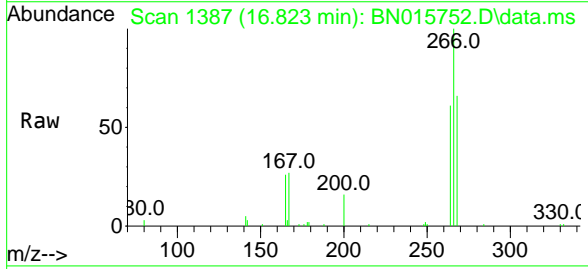
Ion	Ratio	Lower	Upper
200	100		
173	32.6	18.9	28.3#
215	45.7	38.1	57.1

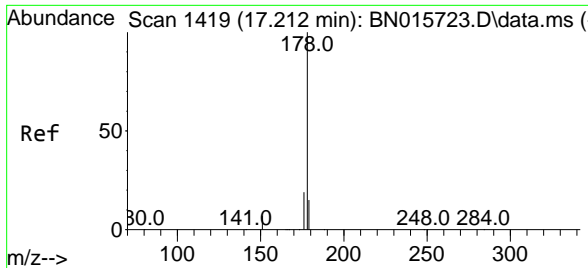


#24  
 Pentachlorophenol  
 Concen: 0.227 ng  
 RT: 16.823 min Scan# 1387  
 Delta R.T. -0.000 min  
 Lab File: BN015752.D  
 Acq: 01 Aug 2021 02:36

Tgt Ion:266 Resp: 9470

Ion	Ratio	Lower	Upper
266	100		
264	62.3	50.2	75.2
268	63.5	51.1	76.7

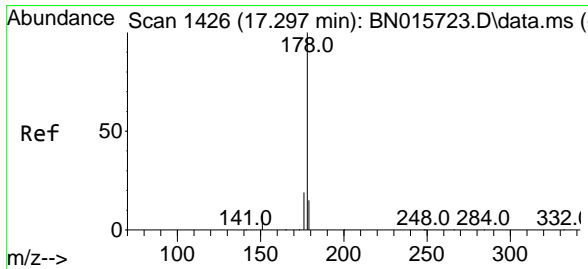
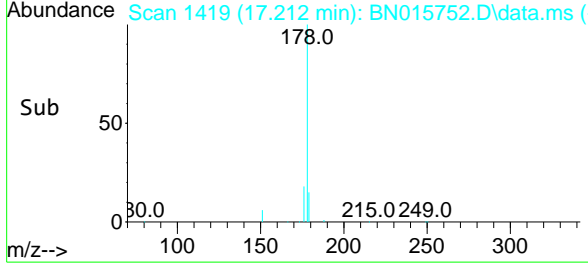
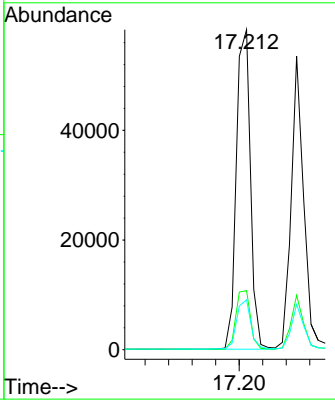
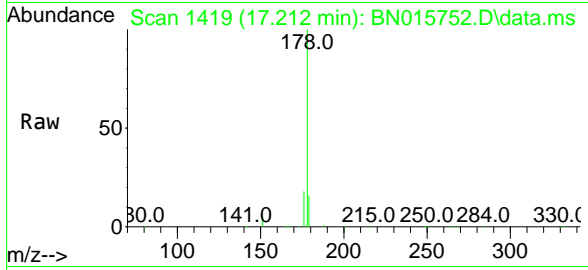




#25  
 Phenanthrene  
 Concen: 0.195 ng  
 RT: 17.212 min Scan# 1419  
 Delta R.T. 0.000 min  
 Lab File: BN015752.D  
 Acq: 01 Aug 2021 02:36

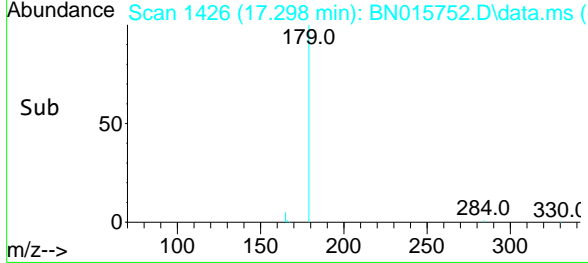
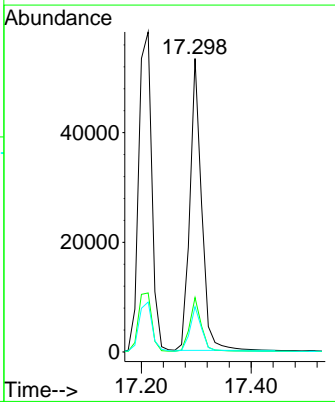
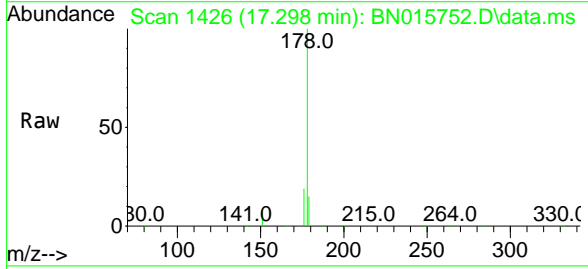
**Instrument :**  
 BNA\_N  
**ClientSampleId :**  
 LOD-MDL-WATER-01-QT3-2021

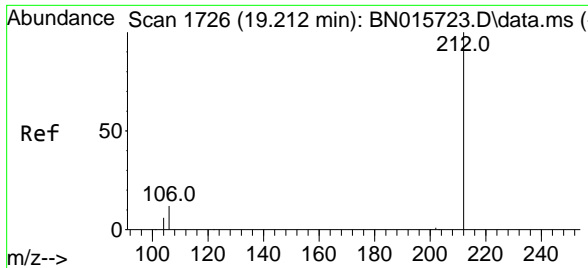
Tgt Ion	Resp	Lower	Upper
178	100		
176	18.9	15.3	22.9
179	15.7	12.4	18.6



#26  
 Anthracene  
 Concen: 0.177 ng  
 RT: 17.298 min Scan# 1426  
 Delta R.T. 0.000 min  
 Lab File: BN015752.D  
 Acq: 01 Aug 2021 02:36

Tgt Ion	Resp	Lower	Upper
178	100		
176	18.3	14.6	22.0
179	15.2	12.2	18.4

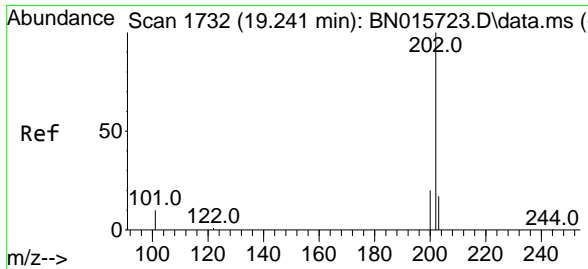
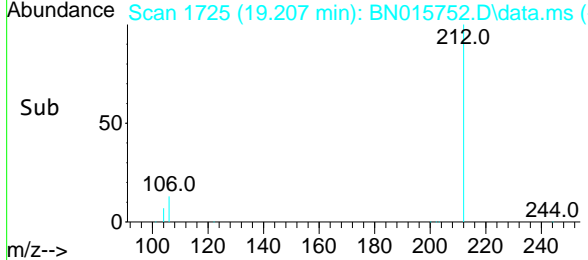
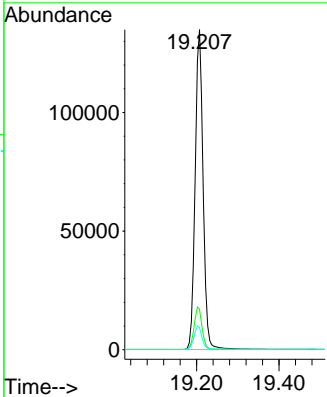
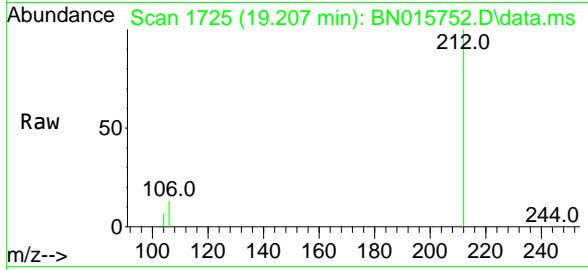




#27  
 Fluoranthene-d10  
 Concen: 0.397 ng  
 RT: 19.207 min Scan# 1725  
 Delta R.T. -0.005 min  
 Lab File: BN015752.D  
 Acq: 01 Aug 2021 02:36

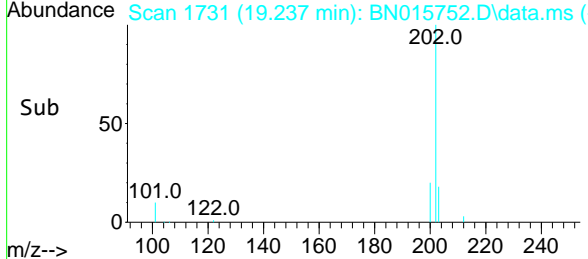
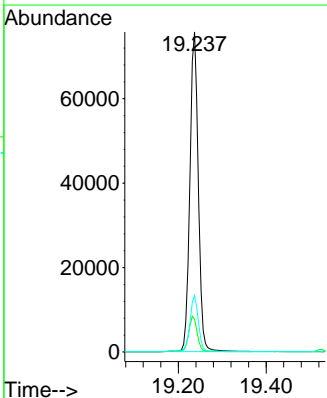
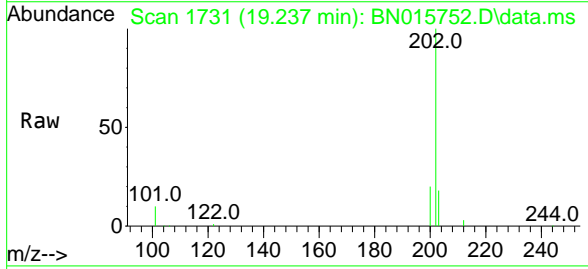
**Instrument :**  
 BNA\_N  
**ClientSampled :**  
 LOD-MDL-WATER-01-QT3-2021

Tgt Ion	Resp	Lower	Upper
212	180665		
106	13.4	10.6	16.0
104	7.4	5.9	8.9

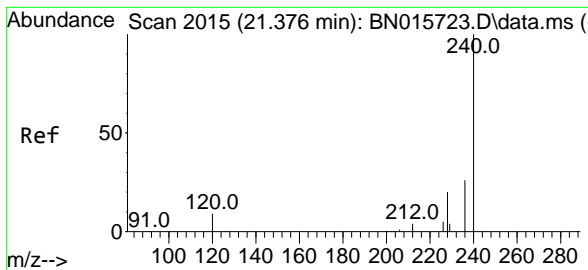


#28  
 Fluoranthene  
 Concen: 0.191 ng  
 RT: 19.237 min Scan# 1731  
 Delta R.T. -0.005 min  
 Lab File: BN015752.D  
 Acq: 01 Aug 2021 02:36

Tgt Ion	Resp	Lower	Upper
202	100766		
101	11.3	9.0	13.6
203	17.4	13.8	20.8



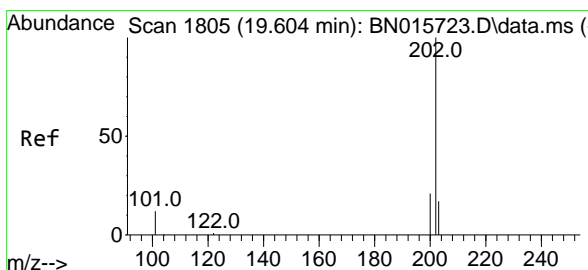
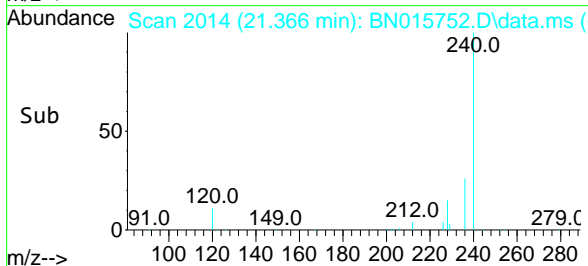
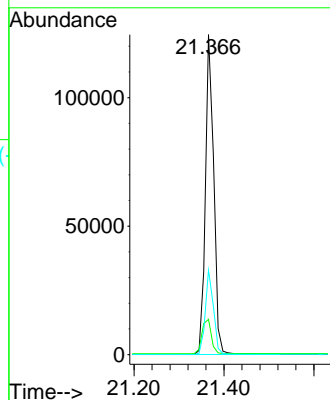
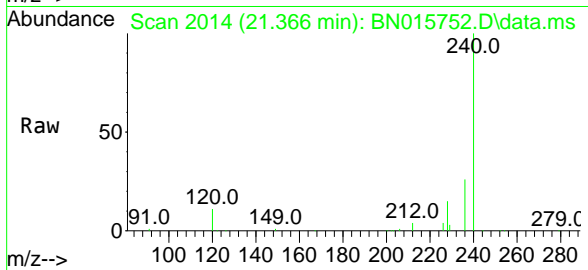




#29  
 Chrysene-d12  
 Concen: 0.400 ng  
 RT: 21.366 min Scan# 2014  
 Delta R.T. -0.010 min  
 Lab File: BN015752.D  
 Acq: 01 Aug 2021 02:36

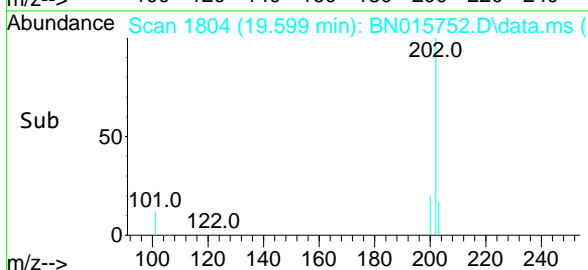
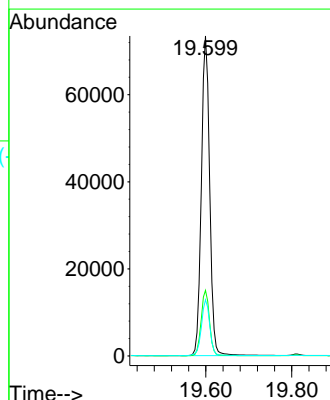
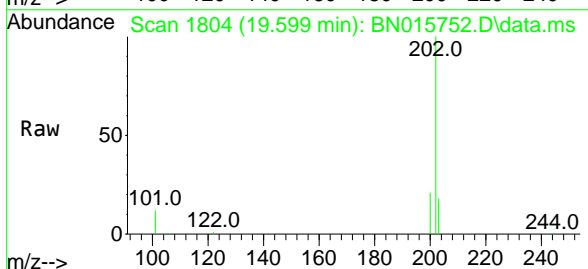
**Instrument :**  
 BNA\_N  
**ClientSampled :**  
 LOD-MDL-WATER-01-QT3-2021

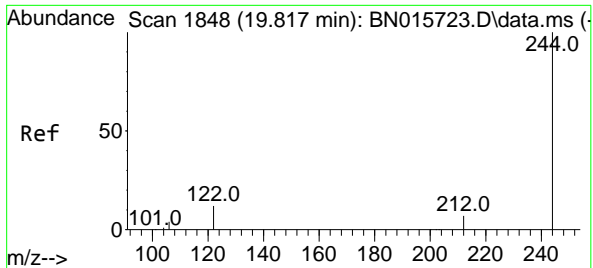
Tgt Ion:240 Resp: 159552  
 Ion Ratio Lower Upper  
 240 100  
 120 11.1 7.4 11.0#  
 236 26.4 20.9 31.3



#30  
 Pyrene  
 Concen: 0.185 ng  
 RT: 19.599 min Scan# 1804  
 Delta R.T. -0.005 min  
 Lab File: BN015752.D  
 Acq: 01 Aug 2021 02:36

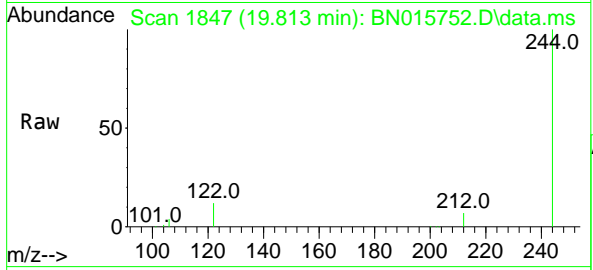
Tgt Ion:202 Resp: 98568  
 Ion Ratio Lower Upper  
 202 100  
 200 20.5 16.5 24.7  
 203 17.7 14.0 21.0





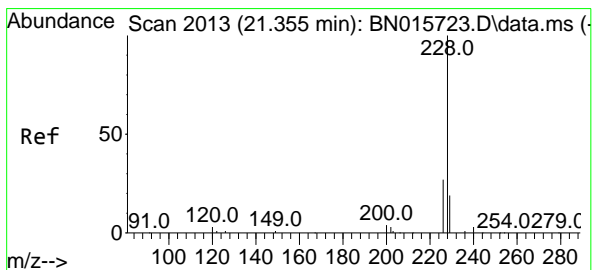
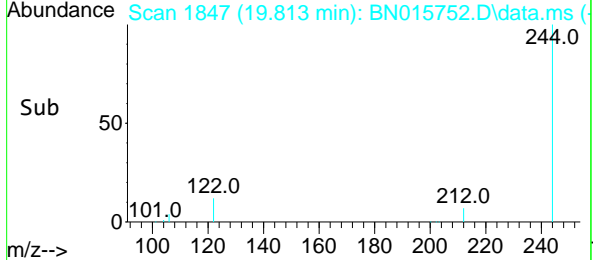
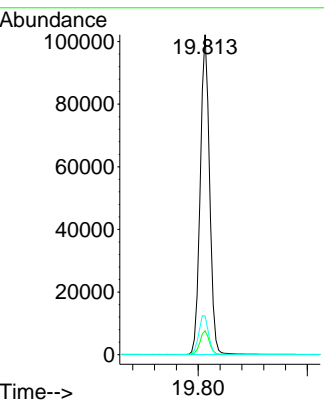
#31  
 Terphenyl-d14  
 Concen: 0.314 ng  
 RT: 19.813 min Scan# 1847  
 Delta R.T. -0.005 min  
 Lab File: BN015752.D  
 Acq: 01 Aug 2021 02:36

**Instrument :**  
 BNA\_N  
**ClientSampled :**  
 LOD-MDL-WATER-01-QT3-2021

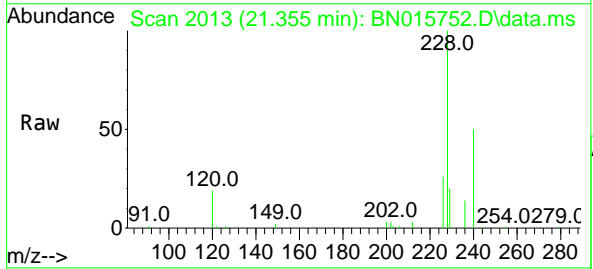


Tgt Ion:244 Resp: 121753

Ion	Ratio	Lower	Upper
244	100		
212	7.4	5.9	8.9
122	12.1	9.6	14.4

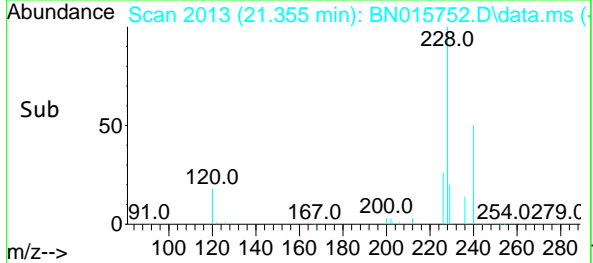
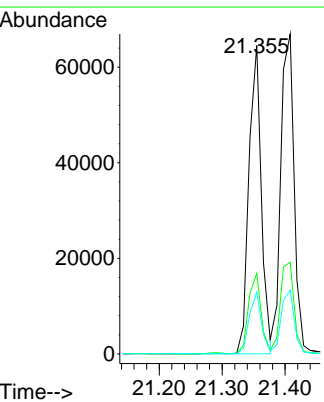


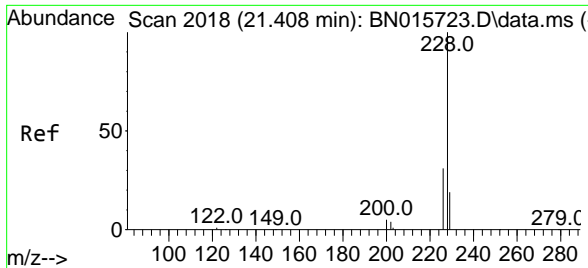
#32  
 Benzo(a)anthracene  
 Concen: 0.173 ng  
 RT: 21.355 min Scan# 2013  
 Delta R.T. 0.000 min  
 Lab File: BN015752.D  
 Acq: 01 Aug 2021 02:36



Tgt Ion:228 Resp: 87963

Ion	Ratio	Lower	Upper
228	100		
226	26.2	21.9	32.9
229	20.0	15.4	23.0

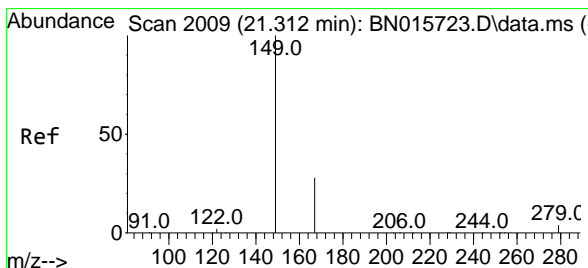
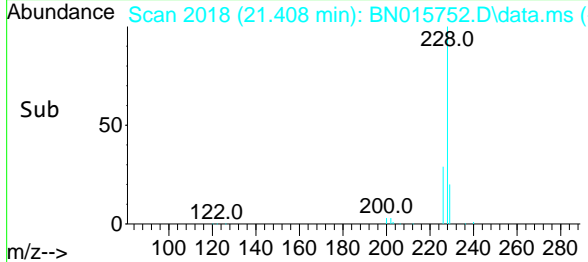
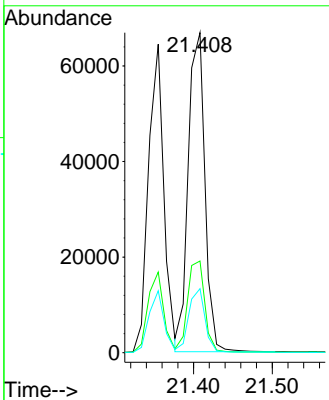
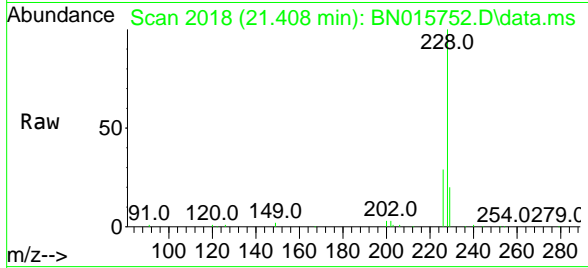




#33  
 Chrysene  
 Concen: 0.190 ng  
 RT: 21.408 min Scan# 2018  
 Delta R.T. 0.000 min  
 Lab File: BN015752.D  
 Acq: 01 Aug 2021 02:36

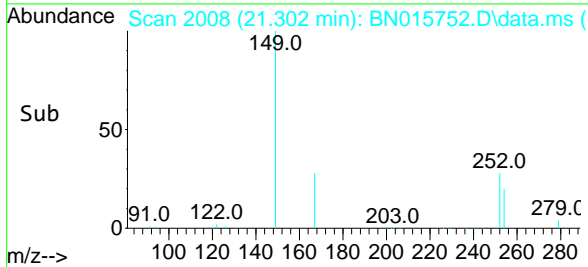
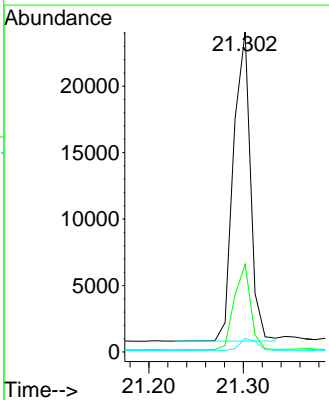
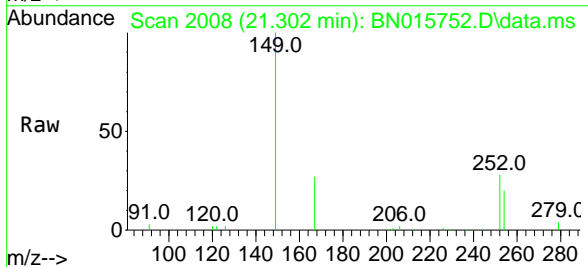
**Instrument :**  
 BNA\_N  
**ClientSampled :**  
 LOD-MDL-WATER-01-QT3-2021

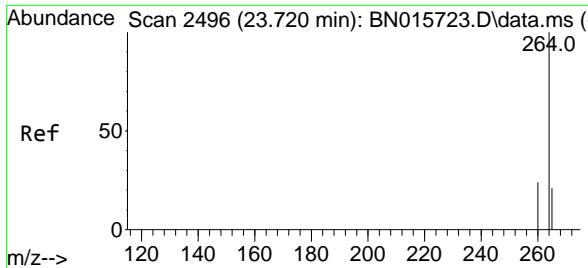
Tgt Ion	Resp	Lower	Upper
228	100		
226	28.7	24.3	36.5
229	20.0	15.3	22.9



#34  
 Bis(2-ethylhexyl)phthalate  
 Concen: 0.108 ng  
 RT: 21.302 min Scan# 2008  
 Delta R.T. -0.010 min  
 Lab File: BN015752.D  
 Acq: 01 Aug 2021 02:36

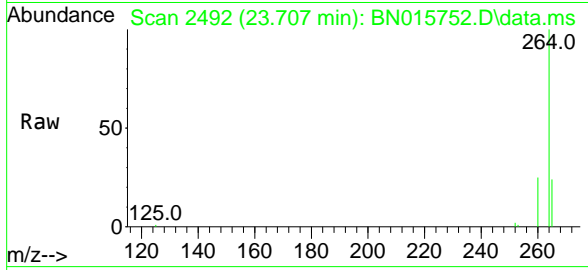
Tgt Ion	Resp	Lower	Upper
149	100		
167	26.6	21.5	32.3
279	4.0	3.2	4.8





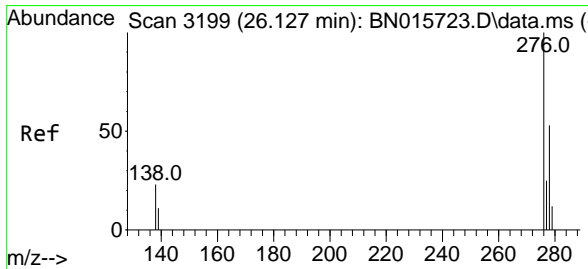
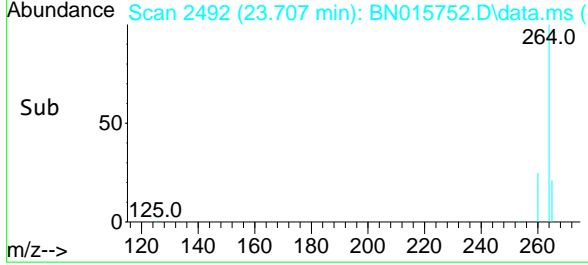
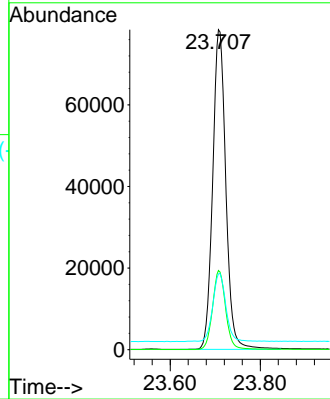
#35  
 Perylene-d12  
 Concen: 0.400 ng  
 RT: 23.707 min Scan# 2492  
 Delta R.T. -0.013 min  
 Lab File: BN015752.D  
 Acq: 01 Aug 2021 02:36

**Instrument :**  
 BNA\_N  
**ClientSampled :**  
 LOD-MDL-WATER-01-QT3-2021



Tgt Ion:264 Resp: 158878

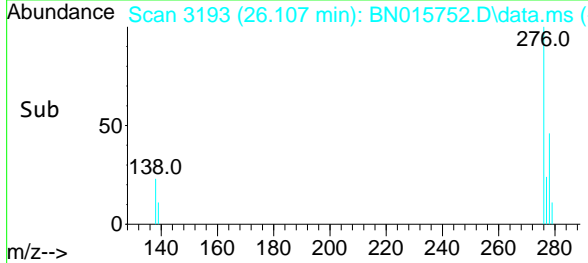
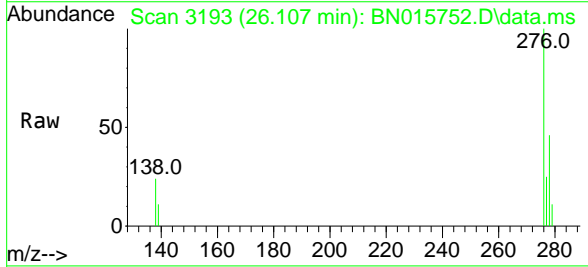
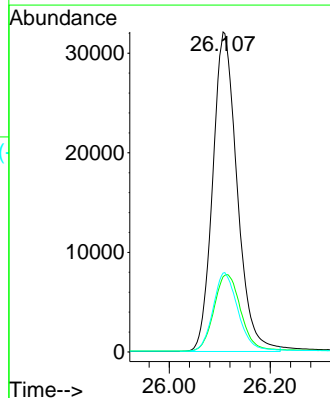
Ion	Ratio	Lower	Upper
264	100		
260	24.8	19.4	29.2
265	23.7	19.9	29.9

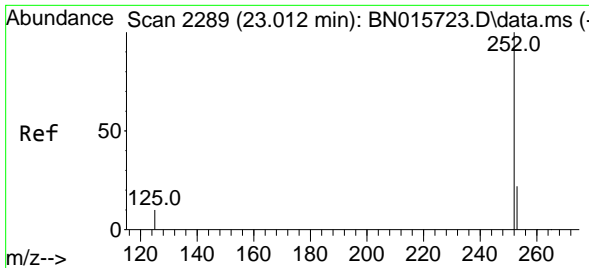


#36  
 Indeno(1,2,3-cd)pyrene  
 Concen: 0.188 ng  
 RT: 26.107 min Scan# 3193  
 Delta R.T. -0.020 min  
 Lab File: BN015752.D  
 Acq: 01 Aug 2021 02:36

Tgt Ion:276 Resp: 107467

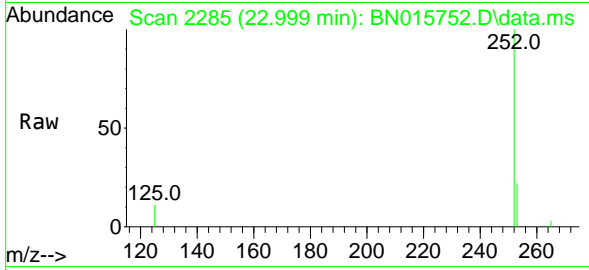
Ion	Ratio	Lower	Upper
276	100		
138	26.3	20.6	30.8
277	25.0	20.1	30.1



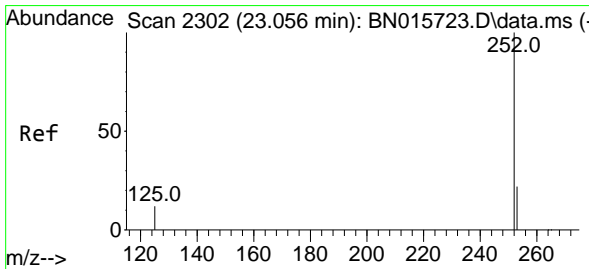
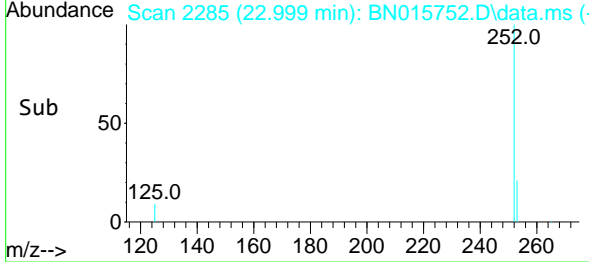
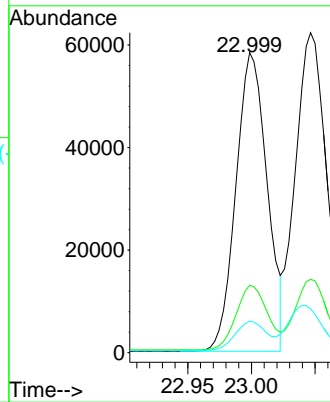


#37  
 Benzo(b)fluoranthene  
 Concen: 0.194 ng  
 RT: 22.999 min Scan# 2285  
 Delta R.T. -0.013 min  
 Lab File: BN015752.D  
 Acq: 01 Aug 2021 02:36

Instrument :  
 BNA\_N  
 ClientSampled :  
 LOD-MDL-WATER-01-QT3-2021

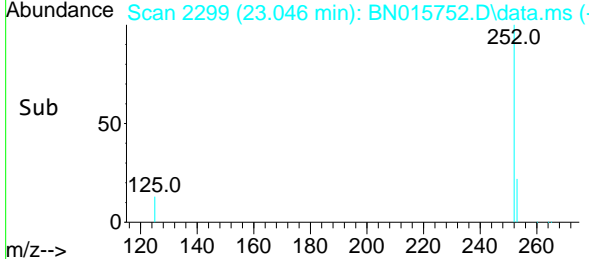
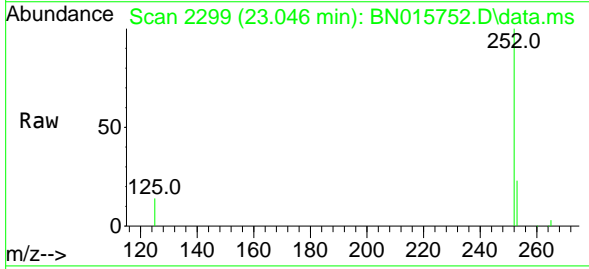
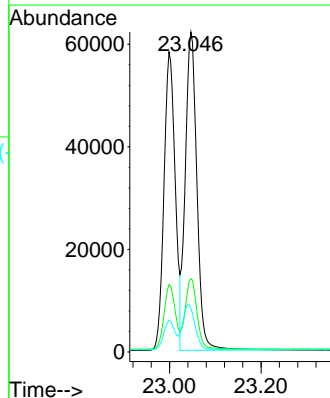


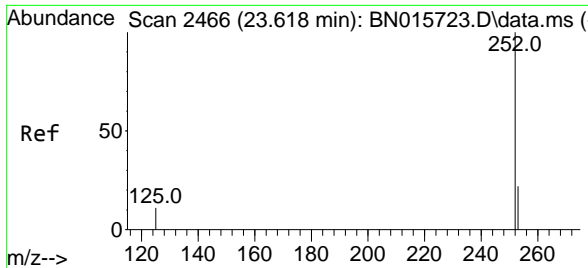
Tgt Ion:252 Resp: 99115  
 Ion Ratio Lower Upper  
 252 100  
 253 22.4 18.1 27.1  
 125 10.5 8.3 12.5



#38  
 Benzo(k)fluoranthene  
 Concen: 0.199 ng  
 RT: 23.046 min Scan# 2299  
 Delta R.T. -0.010 min  
 Lab File: BN015752.D  
 Acq: 01 Aug 2021 02:36

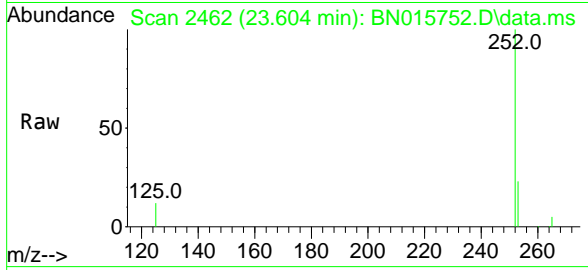
Tgt Ion:252 Resp: 109394  
 Ion Ratio Lower Upper  
 252 100  
 253 22.9 18.1 27.1  
 125 13.6 10.4 15.6





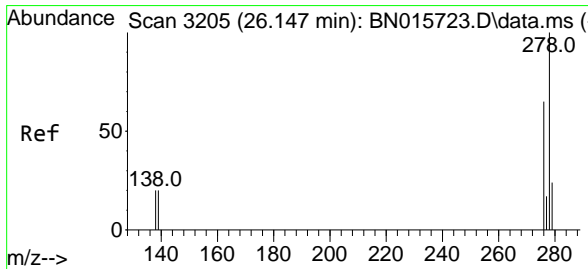
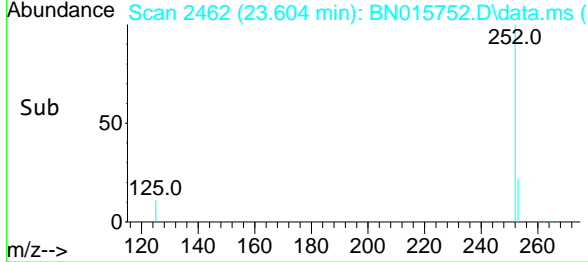
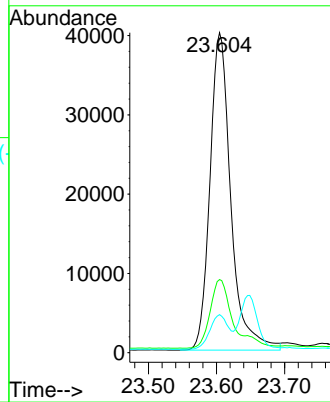
#39  
 Benzo(a)pyrene  
 Concen: 0.183 ng  
 RT: 23.604 min Scan# 2462  
 Delta R.T. -0.013 min  
 Lab File: BN015752.D  
 Acq: 01 Aug 2021 02:36

**Instrument :**  
 BNA\_N  
**ClientSampled :**  
 LOD-MDL-WATER-01-QT3-2021



Tgt Ion:252 Resp: 85426

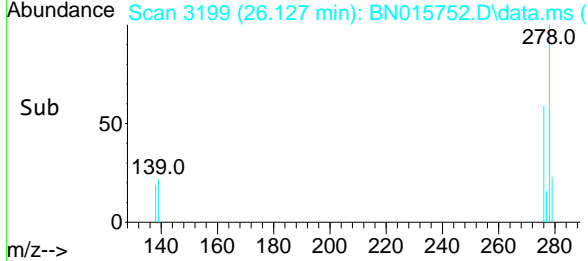
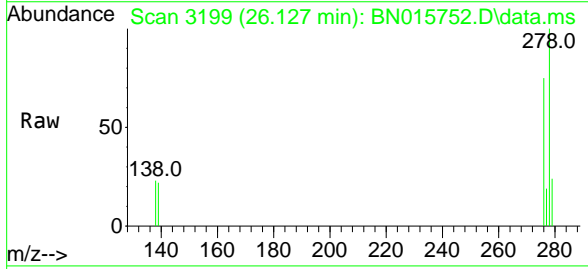
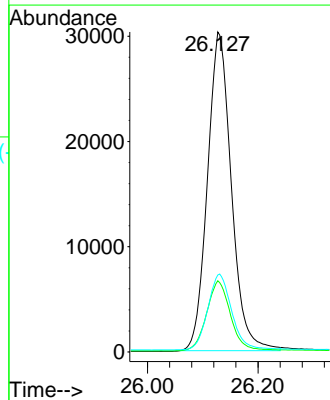
Ion	Ratio	Lower	Upper
252	100		
253	22.9	18.1	27.1
125	11.9	9.2	13.8

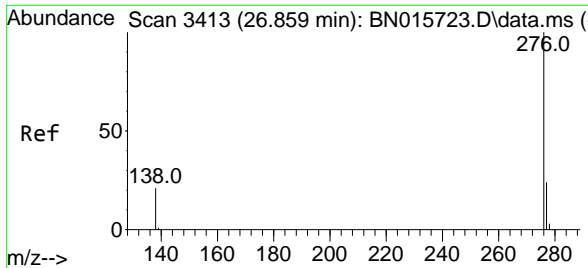


#40  
 Dibenzo(a,h)anthracene  
 Concen: 0.188 ng  
 RT: 26.127 min Scan# 3199  
 Delta R.T. -0.020 min  
 Lab File: BN015752.D  
 Acq: 01 Aug 2021 02:36

Tgt Ion:278 Resp: 90913

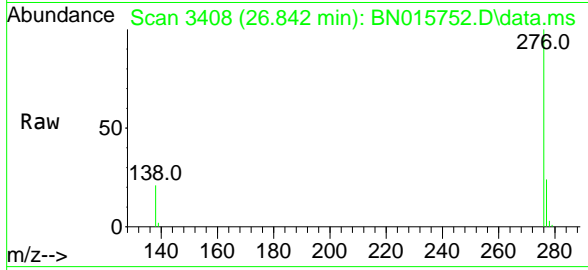
Ion	Ratio	Lower	Upper
278	100		
139	22.2	16.0	24.0
279	24.0	19.2	28.8





#41  
 Benzo(g,h,i)perylene  
 Concen: 0.184 ng  
 RT: 26.842 min Scan# 3408  
 Delta R.T. -0.017 min  
 Lab File: BN015752.D  
 Acq: 01 Aug 2021 02:36

**Instrument :**  
 BNA\_N  
**ClientSampled :**  
 LOD-MDL-WATER-01-QT3-2021



Tgt Ion: 276 Resp: 91793

Ion	Ratio	Lower	Upper
276	100		
277	23.8	19.2	28.8
138	21.2	16.8	25.2

