

Data Path : Z:\svoasrv\HPCHEM1\BNA_N\Data\BN080525\
 Data File : BN037562.D
 Acq On : 05 Aug 2025 11:23
 Operator : RC/JU
 Sample : Q2745-02
 Misc :
 ALS Vial : 5 Sample Multiplier: 1

Instrument :
 BNA_N
 ClientSampleId :
 RW8-SP303-20250731

Quant Time: Aug 06 01:38:48 2025
 Quant Method : Z:\svoasrv\HPCHEM1\BNA_N\Methods\8270-SIM-BN071525.M
 Quant Title : ASP BNA STANDARDS FOR 5 POINT CALIBRATION
 QLast Update : Sat Jul 19 01:46:16 2025
 Response via : Initial Calibration

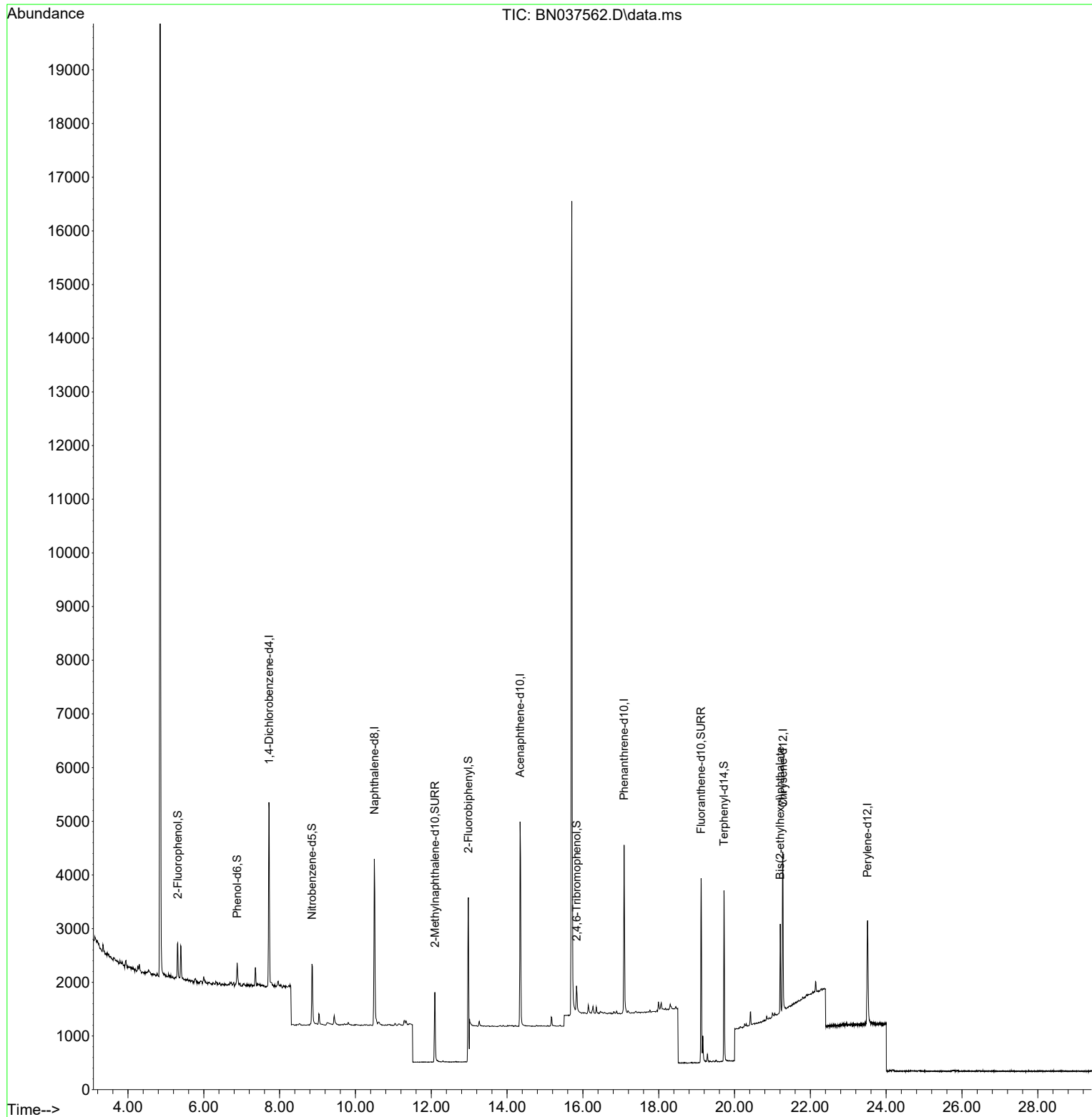
Compound	R.T.	QIon	Response	Conc	Units	Dev(Min)
Internal Standards						
1) 1,4-Dichlorobenzene-d4	7.724	152	1755	0.400	ng	0.00
7) Naphthalene-d8	10.498	136	4432	0.400	ng	#-0.01
13) Acenaphthene-d10	14.345	164	2203	0.400	ng	-0.01
19) Phenanthrene-d10	17.086	188	4201	0.400	ng	#-0.01
29) Chrysene-d12	21.277	240	3117	0.400	ng	0.00
35) Perylene-d12	23.508	264	2700	0.400	ng	# 0.00
System Monitoring Compounds						
4) 2-Fluorophenol	5.312	112	519	0.120	ng	0.00
5) Phenol-d6	6.879	99	355	0.065	ng	0.00
8) Nitrobenzene-d5	8.854	82	1060	0.320	ng	-0.01
11) 2-Methylnaphthalene-d10	12.096	152	1916	0.301	ng	0.00
14) 2,4,6-Tribromophenol	15.833	330	299	0.276	ng	-0.01
15) 2-Fluorobiphenyl	12.978	172	4105	0.358	ng	0.00
27) Fluoranthene-d10	19.118	212	3897	0.350	ng	0.00
31) Terphenyl-d14	19.722	244	3121	0.466	ng	0.00
Target Compounds						Qvalue
34) Bis(2-ethylhexyl)phtha...	21.205	149	1548	0.315	ng	98

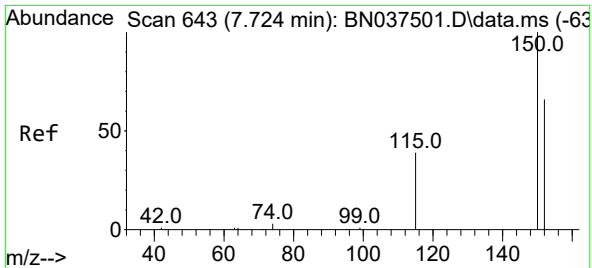
(#) = qualifier out of range (m) = manual integration (+) = signals summed

Data Path : Z:\svoasrv\HPCHEM1\BNA_N\Data\BN080525\
Data File : BN037562.D
Acq On : 05 Aug 2025 11:23
Operator : RC/JU
Sample : Q2745-02
Misc :
ALS Vial : 5 Sample Multiplier: 1

Instrument :
BNA_N
ClientSampleId :
RW8-SP303-20250731

Quant Time: Aug 06 01:38:48 2025
Quant Method : Z:\svoasrv\HPCHEM1\BNA_N\Methods\8270-SIM-BN071525.M
Quant Title : ASP BNA STANDARDS FOR 5 POINT CALIBRATION
QLast Update : Sat Jul 19 01:46:16 2025
Response via : Initial Calibration



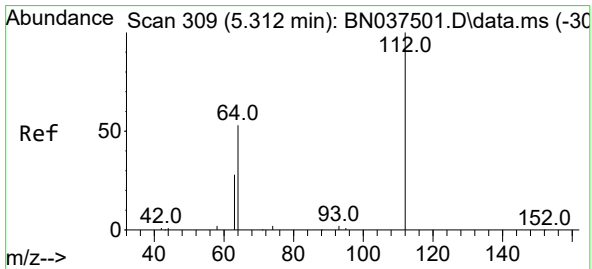
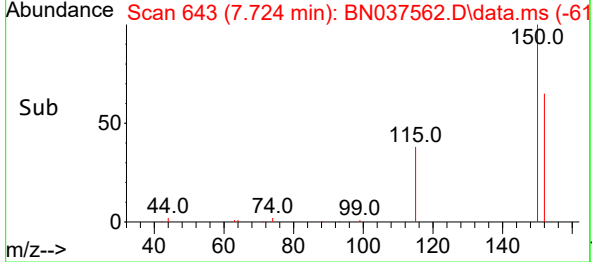
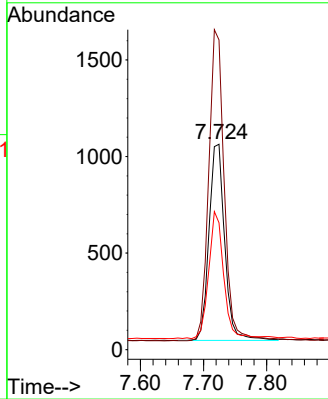
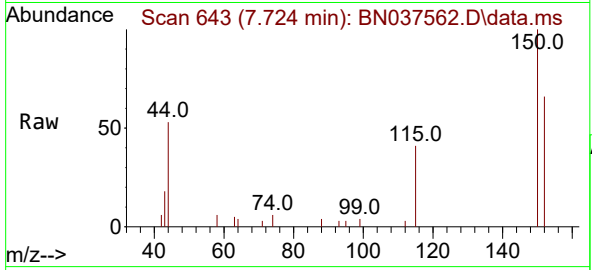


#1
 1,4-Dichlorobenzene-d4
 Concen: 0.400 ng
 RT: 7.724 min Scan# 643
 Delta R.T. 0.000 min
 Lab File: BN037562.D
 Acq: 05 Aug 2025 11:23

Instrument : BNA_N
 ClientSampleId : RW8-SP303-20250731

Tgt Ion:152 Resp: 1755

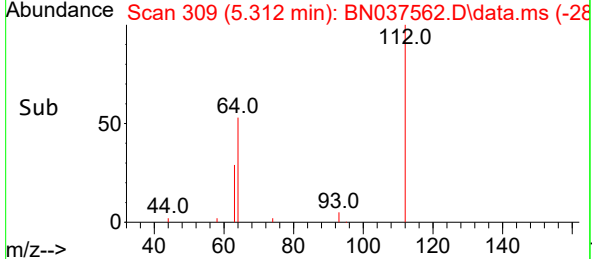
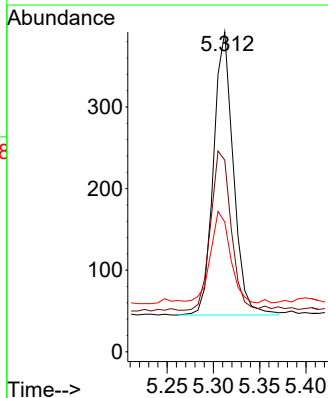
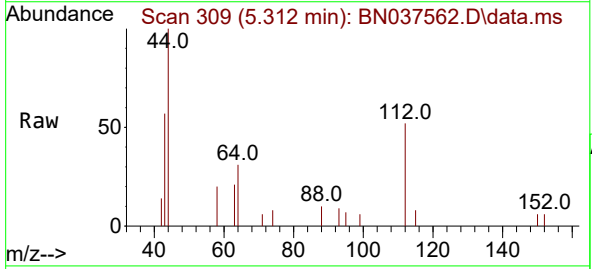
Ion	Ratio	Lower	Upper
152	100		
150	150.8	119.8	179.8
115	61.7	49.1	73.7

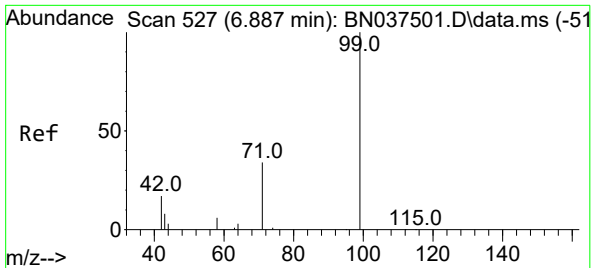


#4
 2-Fluorophenol
 Concen: 0.120 ng
 RT: 5.312 min Scan# 309
 Delta R.T. 0.000 min
 Lab File: BN037562.D
 Acq: 05 Aug 2025 11:23

Tgt Ion:112 Resp: 519

Ion	Ratio	Lower	Upper
112	100		
64	57.6	45.1	67.7
63	33.9	23.8	35.8

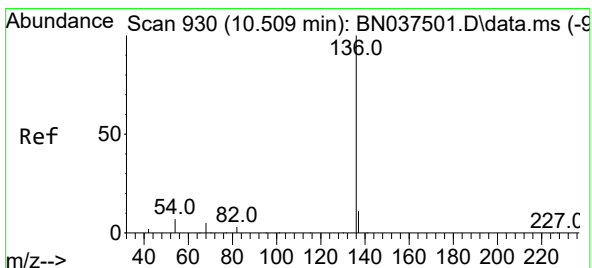
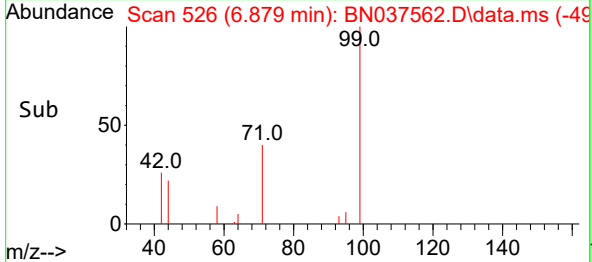
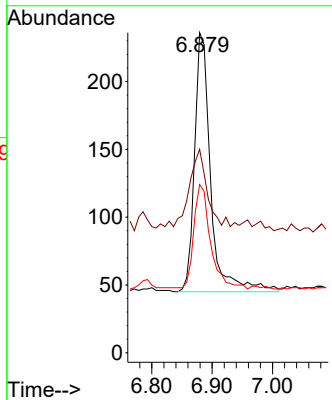
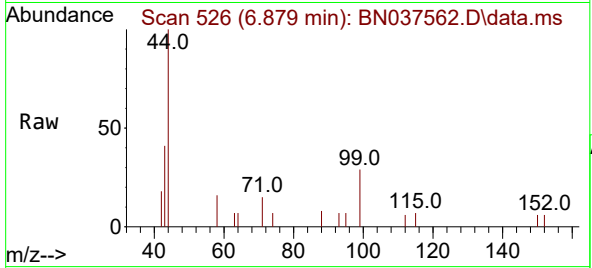




#5
 Phenol-d6
 Concen: 0.065 ng
 RT: 6.879 min Scan# 51
 Delta R.T. -0.007 min
 Lab File: BN037562.D
 Acq: 05 Aug 2025 11:23

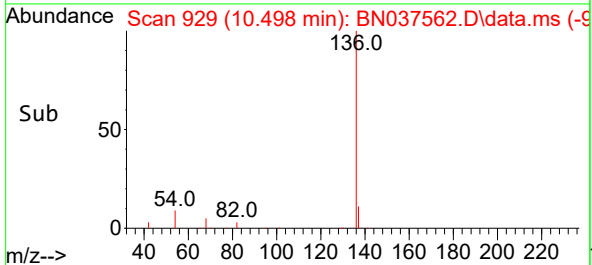
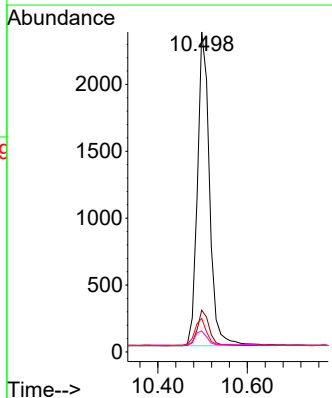
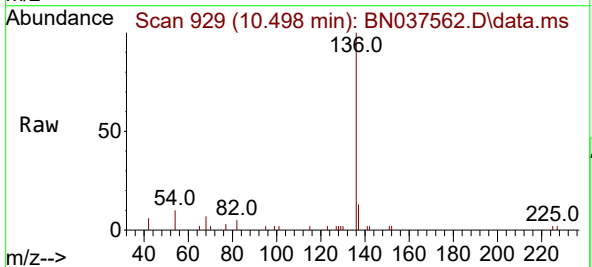
Instrument :
 BNA_N
 ClientSampleId :
 RW8-SP303-20250731

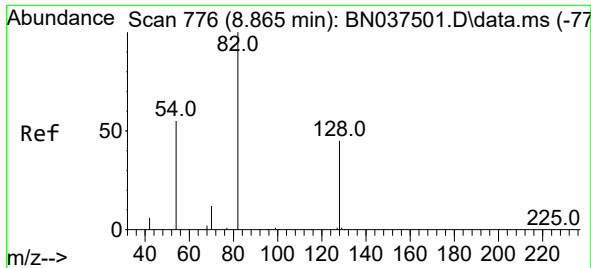
Tgt Ion	Resp	Lower	Upper
99	100		
42	35.2	17.1	25.7#
71	42.0	27.8	41.8#



#7
 Naphthalene-d8
 Concen: 0.400 ng
 RT: 10.498 min Scan# 929
 Delta R.T. -0.011 min
 Lab File: BN037562.D
 Acq: 05 Aug 2025 11:23

Tgt Ion	Resp	Lower	Upper
136	100		
137	13.0	9.8	14.8
54	10.5	6.6	9.8#
68	6.6	5.0	7.6

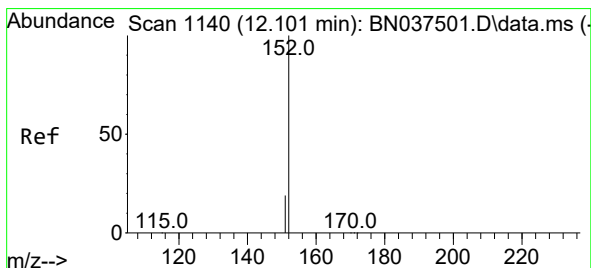
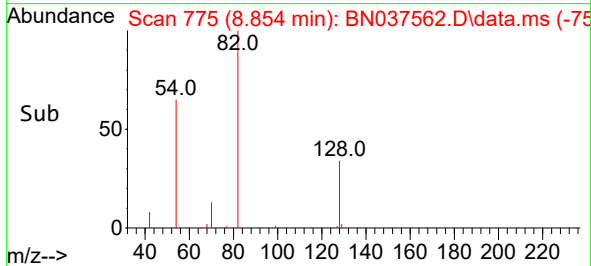
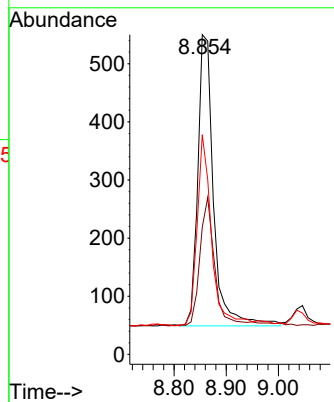
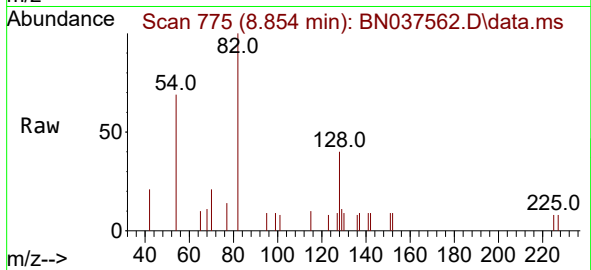




#8
 Nitrobenzene-d5
 Concen: 0.320 ng
 RT: 8.854 min Scan# 71
 Delta R.T. -0.011 min
 Lab File: BN037562.D
 Acq: 05 Aug 2025 11:23

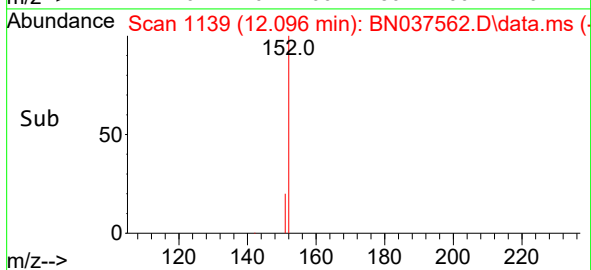
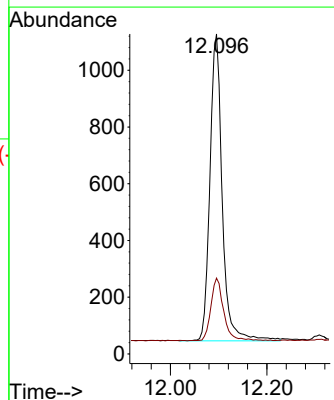
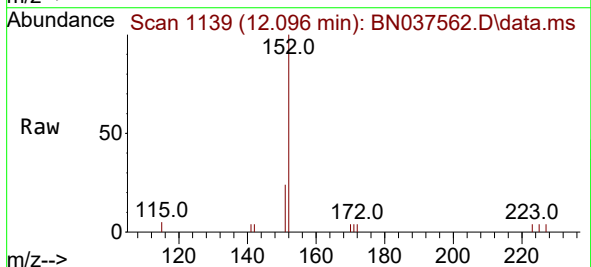
Instrument :
 BNA_N
 ClientSampleId :
 RW8-SP303-20250731

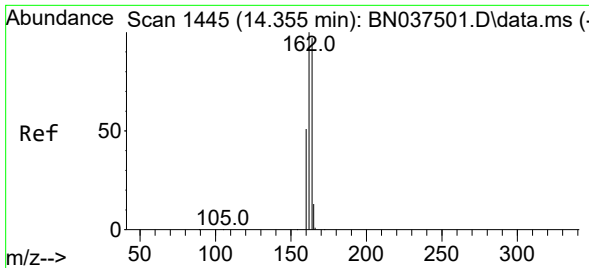
Tgt Ion: 82 Resp: 1060
 Ion Ratio Lower Upper
 82 100
 128 39.8 37.5 56.3
 54 68.7 45.3 67.9#



#11
 2-Methylnaphthalene-d10
 Concen: 0.301 ng
 RT: 12.096 min Scan# 1139
 Delta R.T. -0.005 min
 Lab File: BN037562.D
 Acq: 05 Aug 2025 11:23

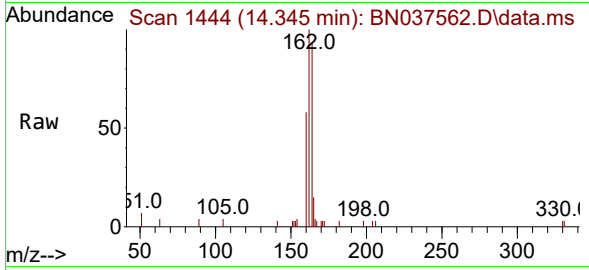
Tgt Ion:152 Resp: 1916
 Ion Ratio Lower Upper
 152 100
 151 21.5 16.8 25.2



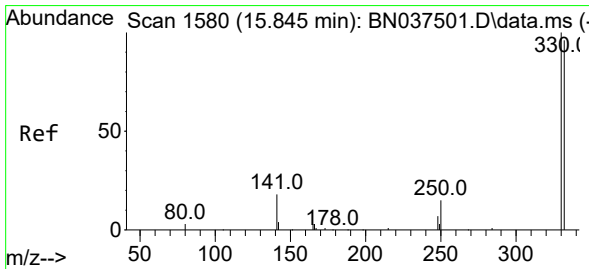
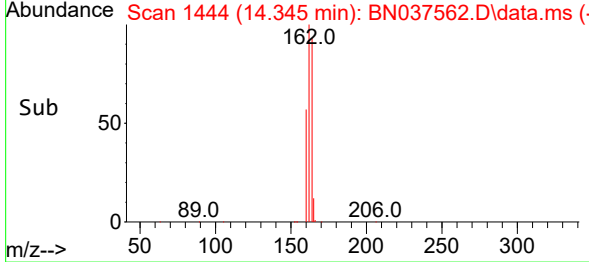
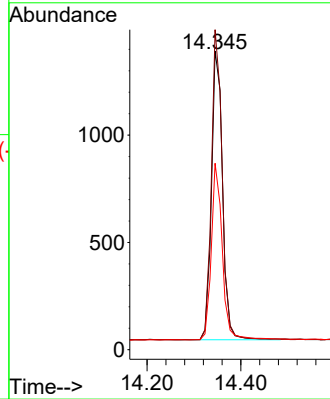


#13
 Acenaphthene-d10
 Concen: 0.400 ng
 RT: 14.345 min Scan# 14
 Delta R.T. -0.011 min
 Lab File: BN037562.D
 Acq: 05 Aug 2025 11:23

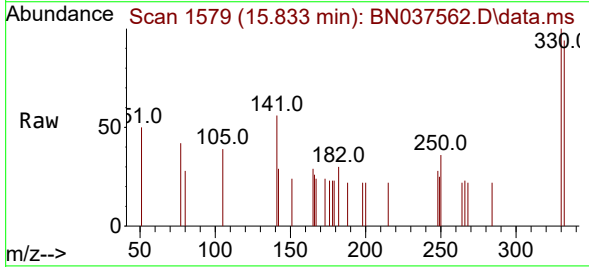
Instrument :
 BNA_N
 ClientSampleId :
 RW8-SP303-20250731



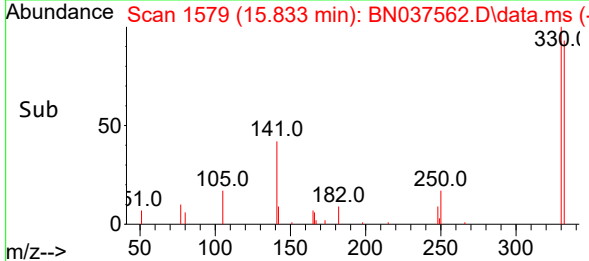
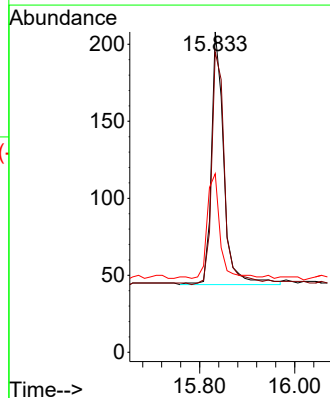
Tgt Ion:164 Resp: 2203
 Ion Ratio Lower Upper
 164 100
 162 107.1 82.0 123.0
 160 62.4 42.4 63.6

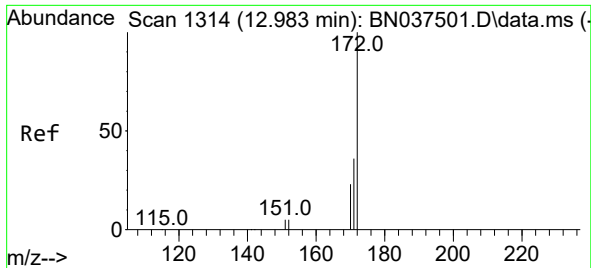


#14
 2,4,6-Tribromophenol
 Concen: 0.276 ng
 RT: 15.833 min Scan# 1579
 Delta R.T. -0.012 min
 Lab File: BN037562.D
 Acq: 05 Aug 2025 11:23



Tgt Ion:330 Resp: 299
 Ion Ratio Lower Upper
 330 100
 332 97.0 76.1 114.1
 141 43.8 33.4 50.0



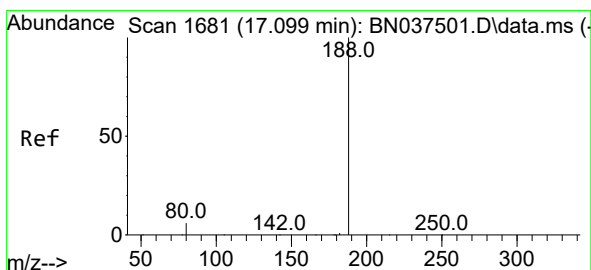
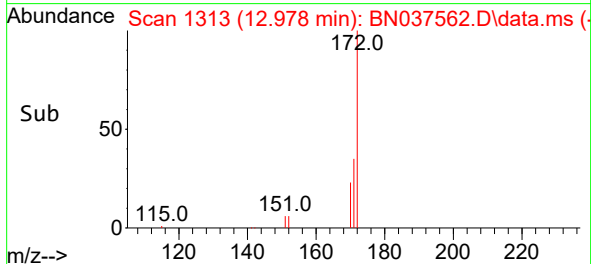
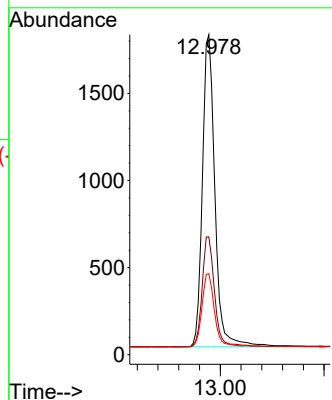
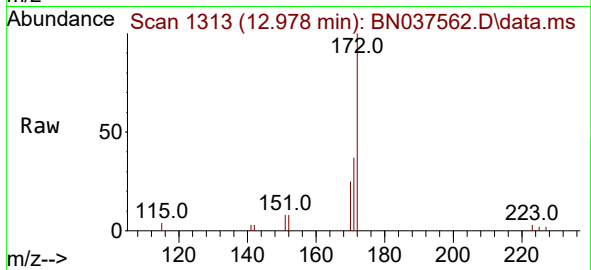


#15
 2-Fluorobiphenyl
 Concen: 0.358 ng
 RT: 12.978 min Scan# 11
 Delta R.T. -0.005 min
 Lab File: BN037562.D
 Acq: 05 Aug 2025 11:23

Instrument :
 BNA_N
 ClientSampleId :
 RW8-SP303-20250731

Tgt Ion:172 Resp: 4105

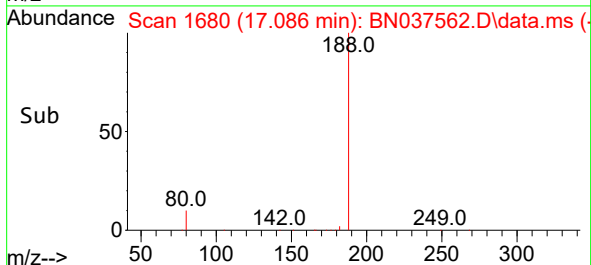
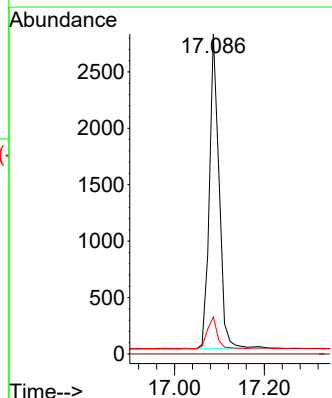
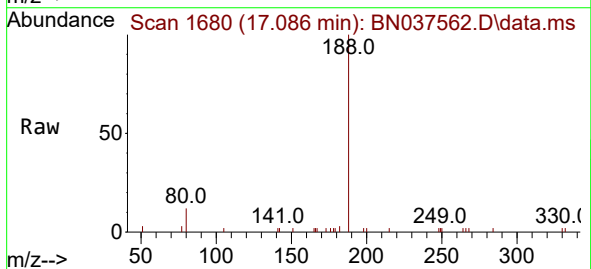
Ion	Ratio	Lower	Upper
172	100		
171	36.8	29.4	44.2
170	25.3	19.4	29.0

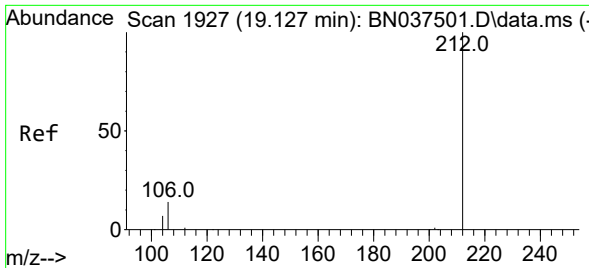


#19
 Phenanthrene-d10
 Concen: 0.400 ng
 RT: 17.086 min Scan# 1680
 Delta R.T. -0.012 min
 Lab File: BN037562.D
 Acq: 05 Aug 2025 11:23

Tgt Ion:188 Resp: 4201

Ion	Ratio	Lower	Upper
188	100		
94	0.0	0.0	0.0
80	11.5	6.0	9.0#



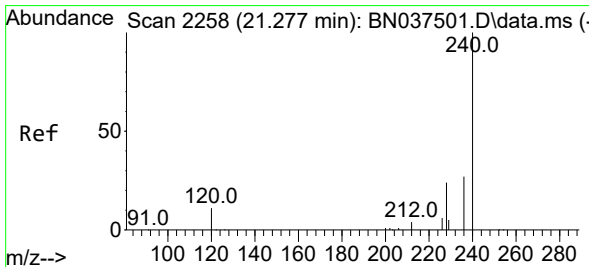
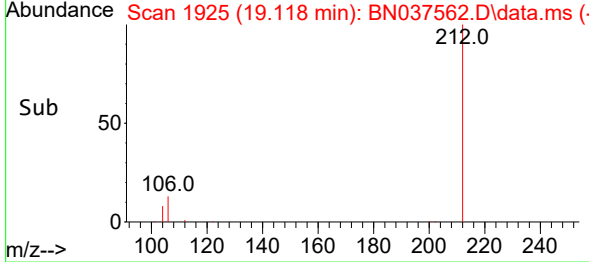
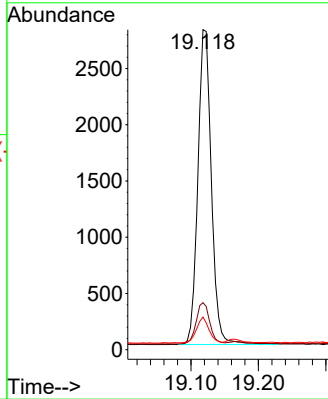
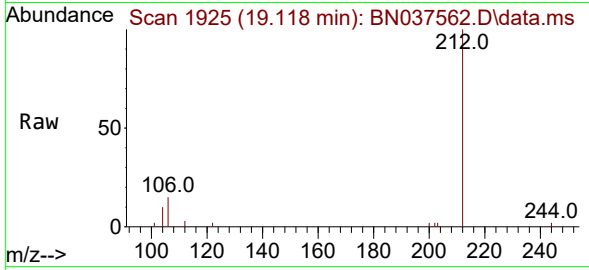


#27
 Fluoranthene-d10
 Concen: 0.350 ng
 RT: 19.118 min Scan# 1925
 Delta R.T. -0.009 min
 Lab File: BN037562.D
 Acq: 05 Aug 2025 11:23

Instrument :
 BNA_N
 ClientSampleId :
 RW8-SP303-20250731

Tgt Ion:212 Resp: 3897

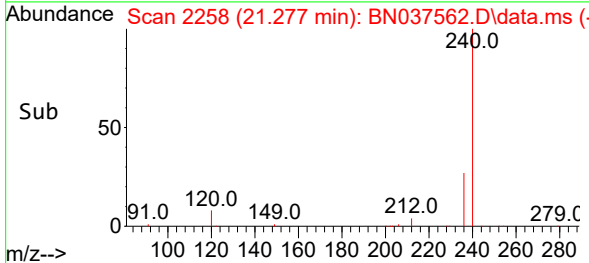
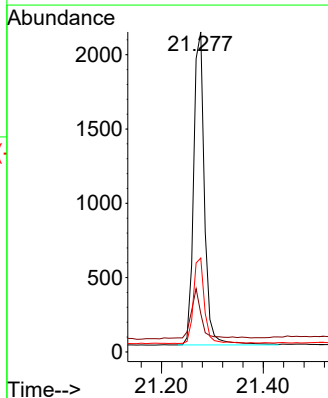
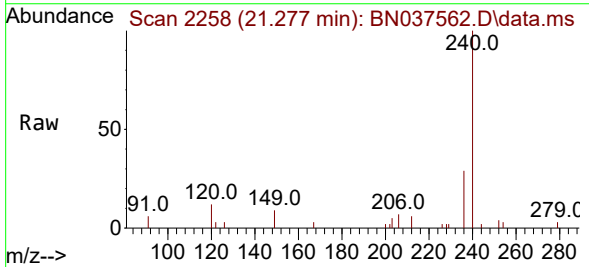
Ion	Ratio	Lower	Upper
212	100		
106	13.0	12.2	18.4
104	7.6	6.7	10.1

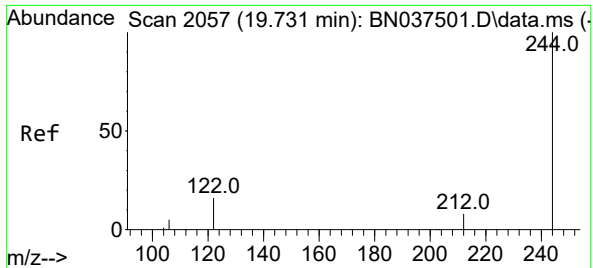


#29
 Chrysene-d12
 Concen: 0.400 ng
 RT: 21.277 min Scan# 2258
 Delta R.T. -0.000 min
 Lab File: BN037562.D
 Acq: 05 Aug 2025 11:23

Tgt Ion:240 Resp: 3117

Ion	Ratio	Lower	Upper
240	100		
120	12.0	10.7	16.1
236	29.4	22.6	33.8



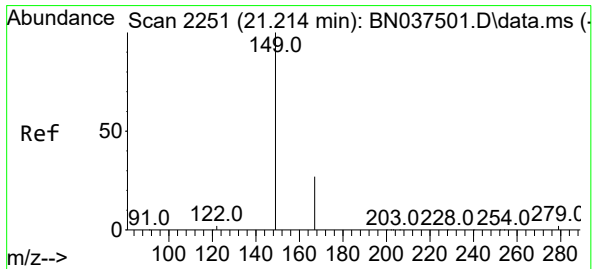
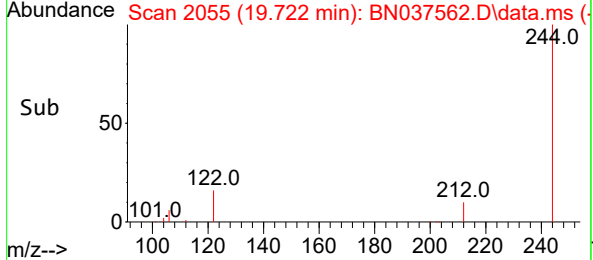
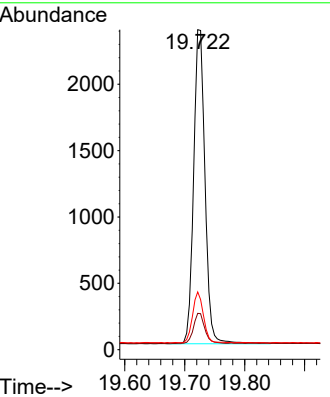
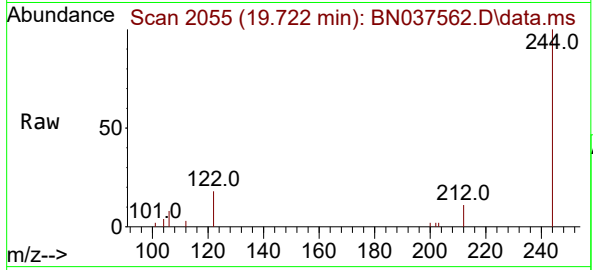


#31
 Terphenyl-d14
 Concen: 0.466 ng
 RT: 19.722 min Scan# 2055
 Delta R.T. -0.009 min
 Lab File: BN037562.D
 Acq: 05 Aug 2025 11:23

Instrument :
 BNA_N
ClientSampleId :
 RW8-SP303-20250731

Tgt Ion: 244 Resp: 3121

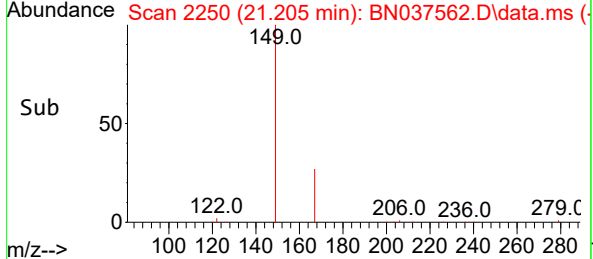
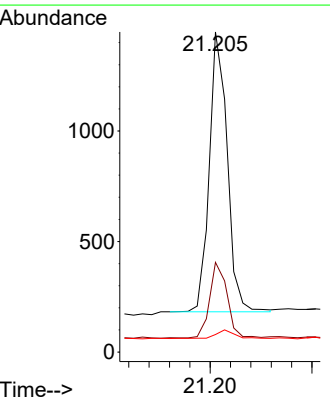
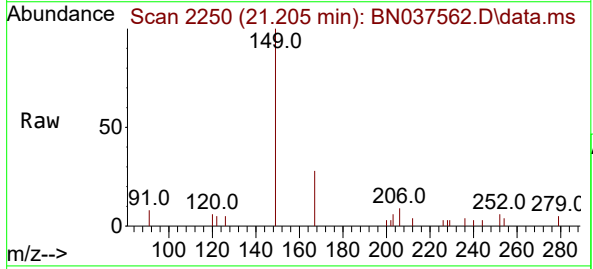
Ion	Ratio	Lower	Upper
244	100		
212	11.4	7.4	11.2#
122	18.0	13.6	20.4

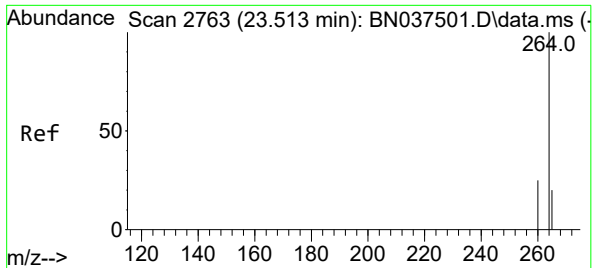


#34
 Bis(2-ethylhexyl)phthalate
 Concen: 0.315 ng
 RT: 21.205 min Scan# 2250
 Delta R.T. -0.009 min
 Lab File: BN037562.D
 Acq: 05 Aug 2025 11:23

Tgt Ion: 149 Resp: 1548

Ion	Ratio	Lower	Upper
149	100		
167	26.1	21.8	32.8
279	3.3	3.0	4.4





#35
 Perylene-d12
 Concen: 0.400 ng
 RT: 23.508 min Scan# 21
 Delta R.T. -0.006 min
 Lab File: BN037562.D
 Acq: 05 Aug 2025 11:23

Instrument :
 BNA_N
 ClientSampleId :
 RW8-SP303-20250731

Tgt Ion: 264 Resp: 2700

Ion	Ratio	Lower	Upper
264	100		
260	27.6	21.2	31.8
265	70.3	40.4	60.6

