

Data Path : Z:\svoasrv\HPCHEM1\BNA_N\Data\BN080525\
 Data File : BN037563.D
 Acq On : 05 Aug 2025 11:59
 Operator : RC/JU
 Sample : Q2746-01
 Misc :
 ALS Vial : 6 Sample Multiplier: 1

Instrument :
 BNA_N
 ClientSampleId :
 RW7-SP100-20250731

Quant Time: Aug 06 01:38:59 2025
 Quant Method : Z:\svoasrv\HPCHEM1\BNA_N\Methods\8270-SIM-BN071525.M
 Quant Title : ASP BNA STANDARDS FOR 5 POINT CALIBRATION
 QLast Update : Sat Jul 19 01:46:16 2025
 Response via : Initial Calibration

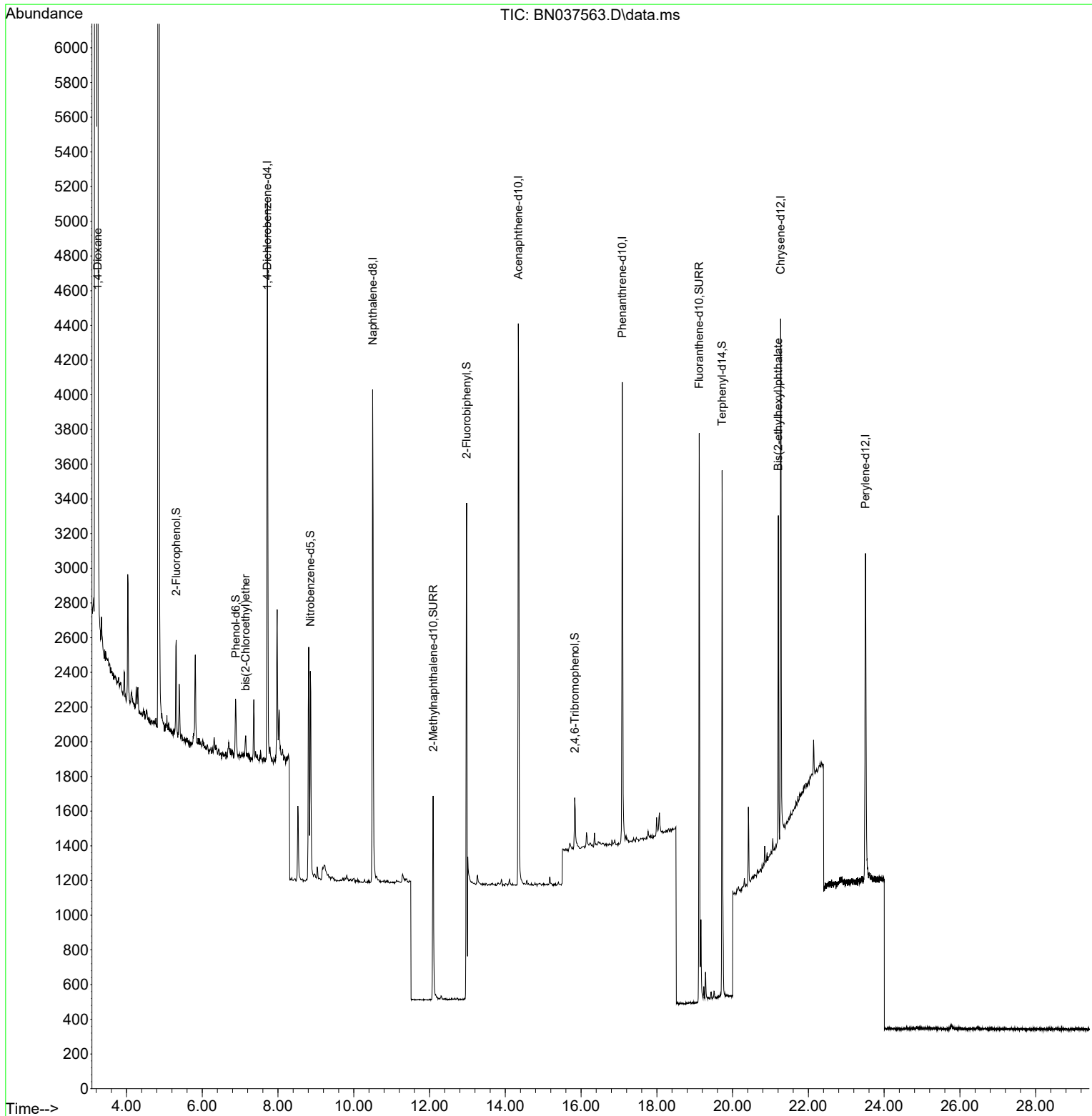
Compound	R.T.	QIon	Response	Conc	Units	Dev(Min)
Internal Standards						
1) 1,4-Dichlorobenzene-d4	7.717	152	1609	0.400	ng	0.00
7) Naphthalene-d8	10.498	136	3989	0.400	ng	#-0.01
13) Acenaphthene-d10	14.345	164	1937	0.400	ng	-0.01
19) Phenanthrene-d10	17.086	188	3786	0.400	ng	#-0.01
29) Chrysene-d12	21.268	240	3070	0.400	ng	# 0.00
35) Perylene-d12	23.507	264	2628	0.400	ng	# 0.00
System Monitoring Compounds						
4) 2-Fluorophenol	5.312	112	446	0.112	ng	0.00
5) Phenol-d6	6.887	99	313	0.063	ng	0.00
8) Nitrobenzene-d5	8.854	82	1008	0.338	ng	-0.01
11) 2-Methylnaphthalene-d10	12.096	152	1750	0.306	ng	0.00
14) 2,4,6-Tribromophenol	15.833	330	194	0.204	ng	-0.01
15) 2-Fluorobiphenyl	12.978	172	3806	0.378	ng	0.00
27) Fluoranthene-d10	19.118	212	3683	0.367	ng	0.00
31) Terphenyl-d14	19.722	244	2892	0.438	ng	0.00
Target Compounds						Qvalue
2) 1,4-Dioxane	3.239	88	5201	3.362	ng	98
6) bis(2-Chloroethyl)ether	7.147	93	91	0.022	ng	92
34) Bis(2-ethylhexyl)phtha...	21.205	149	1702	0.352	ng	96

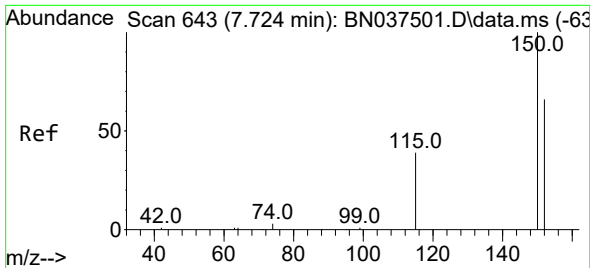
(#) = qualifier out of range (m) = manual integration (+) = signals summed

Data Path : Z:\svoasrv\HPCHEM1\BNA_N\Data\BN080525\
 Data File : BN037563.D
 Acq On : 05 Aug 2025 11:59
 Operator : RC/JU
 Sample : Q2746-01
 Misc :
 ALS Vial : 6 Sample Multiplier: 1

Instrument :
 BNA_N
 ClientSampleId :
 RW7-SP100-20250731

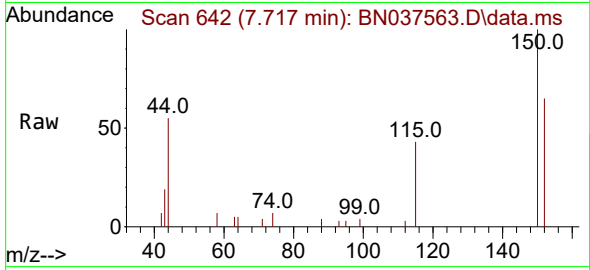
Quant Time: Aug 06 01:38:59 2025
 Quant Method : Z:\svoasrv\HPCHEM1\BNA_N\Methods\8270-SIM-BN071525.M
 Quant Title : ASP BNA STANDARDS FOR 5 POINT CALIBRATION
 QLast Update : Sat Jul 19 01:46:16 2025
 Response via : Initial Calibration



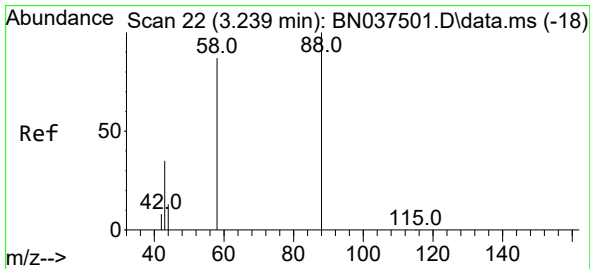
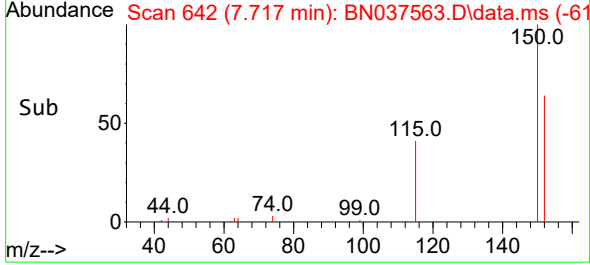
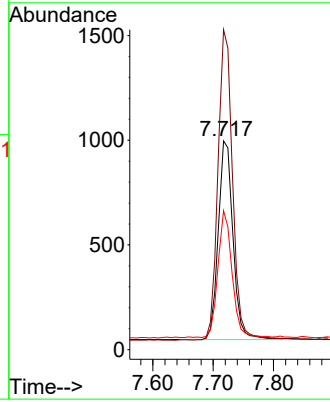


#1
 1,4-Dichlorobenzene-d4
 Concen: 0.400 ng
 RT: 7.717 min Scan# 64
 Delta R.T. -0.007 min
 Lab File: BN037563.D
 Acq: 05 Aug 2025 11:59

Instrument :
 BNA_N
 ClientSampleId :
 RW7-SP100-20250731

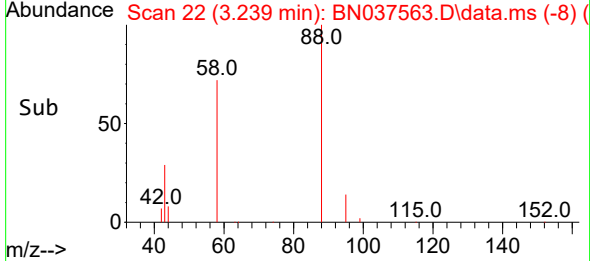
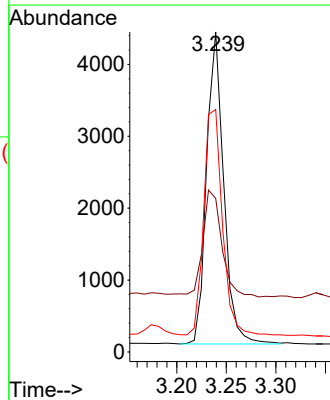
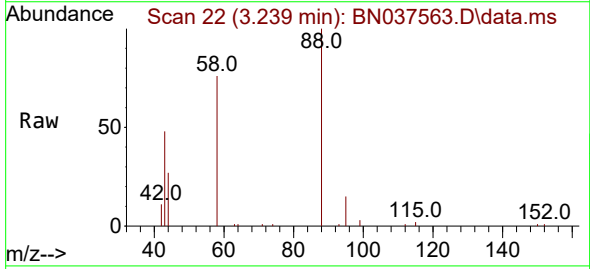


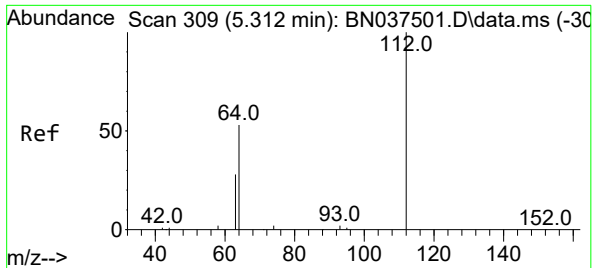
Tgt Ion:152 Resp: 1609
 Ion Ratio Lower Upper
 152 100
 150 153.3 119.8 179.8
 115 66.5 49.1 73.7



#2
 1,4-Dioxane
 Concen: 3.362 ng
 RT: 3.239 min Scan# 22
 Delta R.T. -0.000 min
 Lab File: BN037563.D
 Acq: 05 Aug 2025 11:59

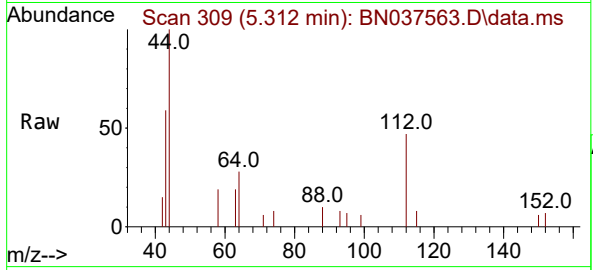
Tgt Ion: 88 Resp: 5201
 Ion Ratio Lower Upper
 88 100
 43 37.8 27.5 41.3
 58 78.5 62.7 94.1





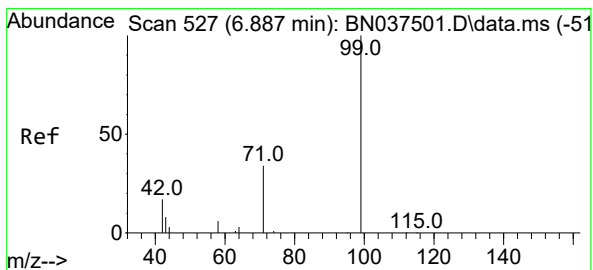
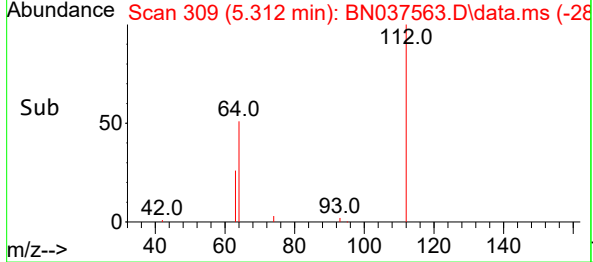
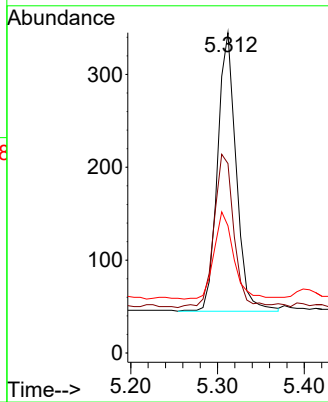
#4
 2-Fluorophenol
 Concen: 0.112 ng
 RT: 5.312 min Scan# 309
 Delta R.T. -0.000 min
 Lab File: BN037563.D
 Acq: 05 Aug 2025 11:59

Instrument : BNA_N
 ClientSampleId : RW7-SP100-20250731



Tgt Ion: 112 Resp: 446

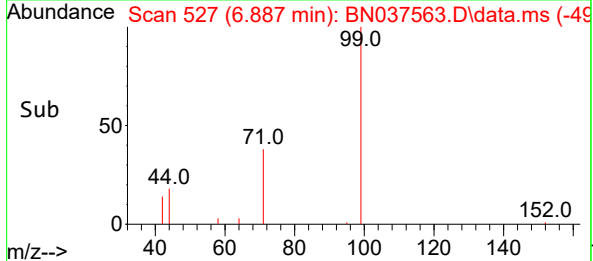
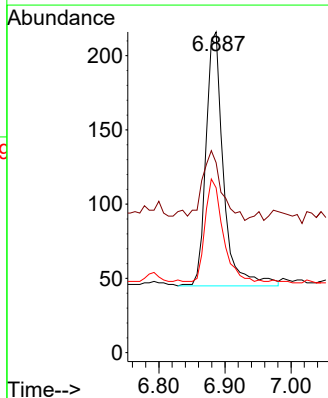
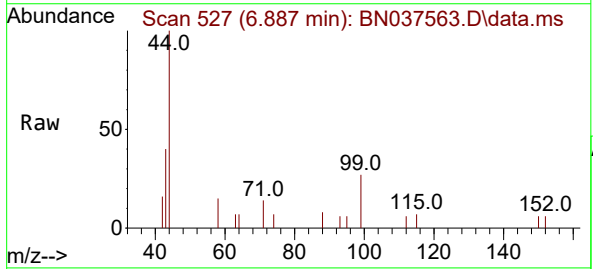
Ion	Ratio	Lower	Upper
112	100		
64	59.6	45.1	67.7
63	33.2	23.8	35.8

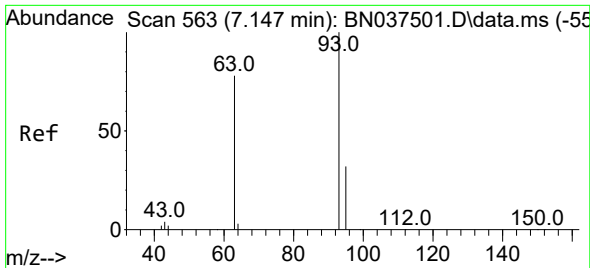


#5
 Phenol-d6
 Concen: 0.063 ng
 RT: 6.887 min Scan# 527
 Delta R.T. -0.000 min
 Lab File: BN037563.D
 Acq: 05 Aug 2025 11:59

Tgt Ion: 99 Resp: 313

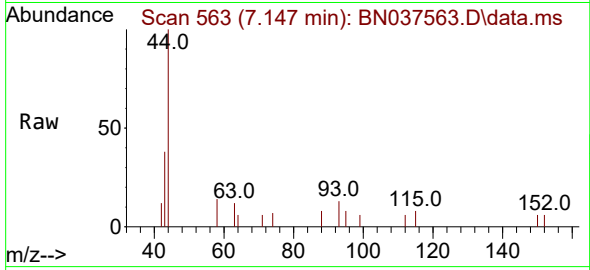
Ion	Ratio	Lower	Upper
99	100		
42	30.0	17.1	25.7#
71	42.8	27.8	41.8#





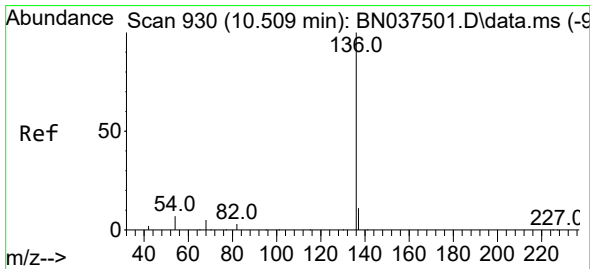
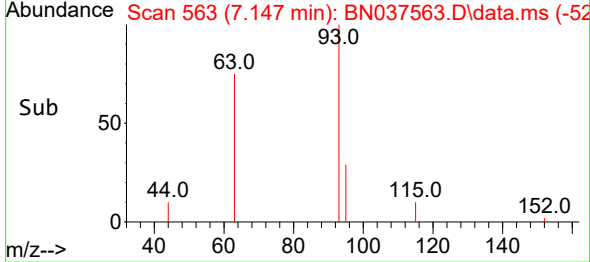
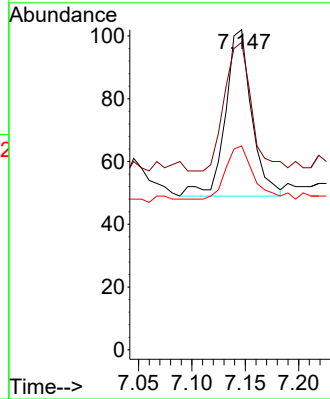
#6
 bis(2-Chloroethyl)ether
 Concen: 0.022 ng
 RT: 7.147 min Scan# 501
 Delta R.T. -0.000 min
 Lab File: BN037563.D
 Acq: 05 Aug 2025 11:59

Instrument :
 BNA_N
 ClientSampleId :
 RW7-SP100-20250731



Tgt Ion: 93 Resp: 91

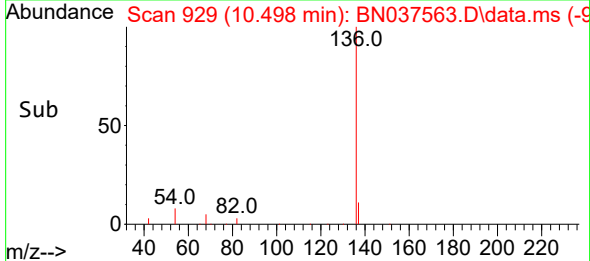
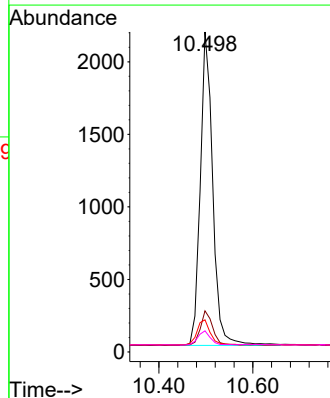
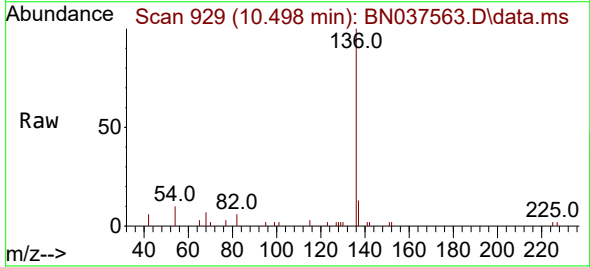
Ion	Ratio	Lower	Upper
93	100		
63	81.3	58.2	87.4
95	34.1	25.3	37.9

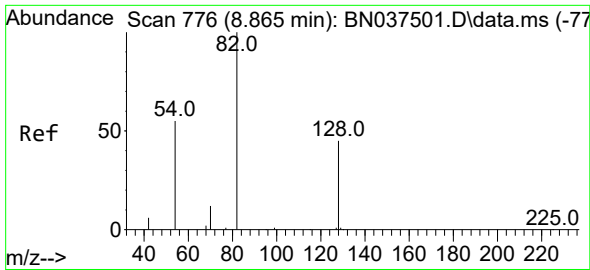


#7
 Naphthalene-d8
 Concen: 0.400 ng
 RT: 10.498 min Scan# 929
 Delta R.T. -0.011 min
 Lab File: BN037563.D
 Acq: 05 Aug 2025 11:59

Tgt Ion: 136 Resp: 3989

Ion	Ratio	Lower	Upper
136	100		
137	12.9	9.8	14.8
54	10.1	6.6	9.8
68	6.6	5.0	7.6

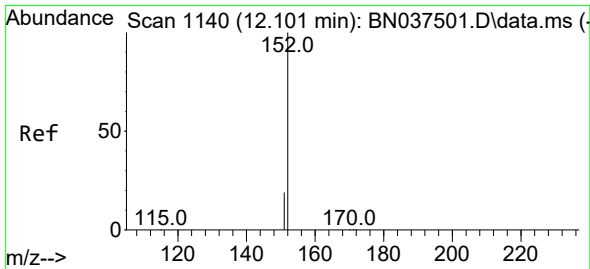
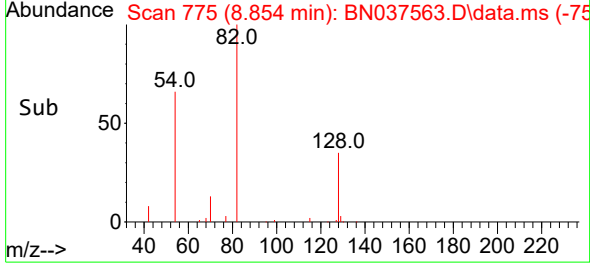
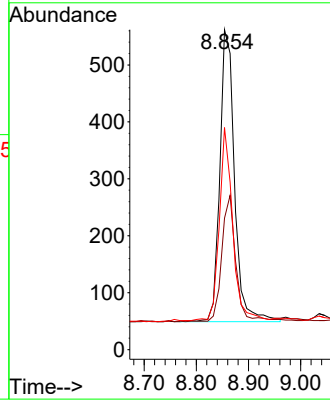
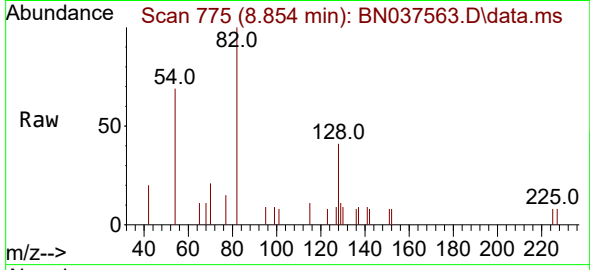




#8
 Nitrobenzene-d5
 Concen: 0.338 ng
 RT: 8.854 min Scan# 776
 Delta R.T. -0.011 min
 Lab File: BN037563.D
 Acq: 05 Aug 2025 11:59

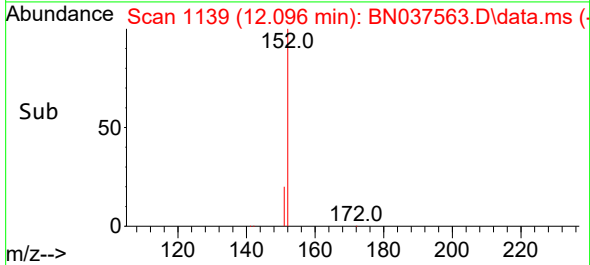
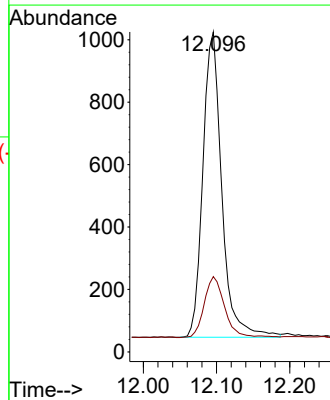
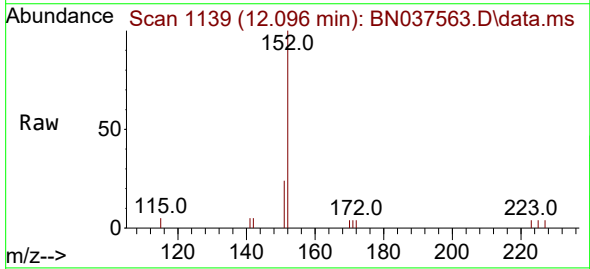
Instrument :
 BNA_N
 ClientSampleId :
 RW7-SP100-20250731

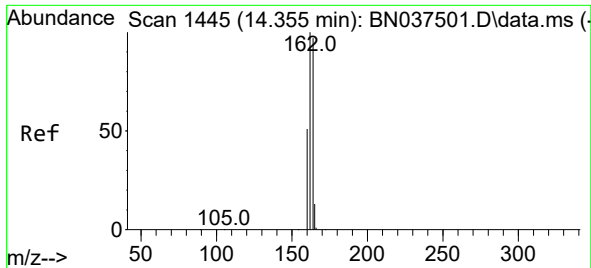
Tgt Ion: 82 Resp: 1008
 Ion Ratio Lower Upper
 82 100
 128 41.1 37.5 56.3
 54 69.4 45.3 67.9#



#11
 2-Methylnaphthalene-d10
 Concen: 0.306 ng
 RT: 12.096 min Scan# 1139
 Delta R.T. -0.005 min
 Lab File: BN037563.D
 Acq: 05 Aug 2025 11:59

Tgt Ion: 152 Resp: 1750
 Ion Ratio Lower Upper
 152 100
 151 21.7 16.8 25.2



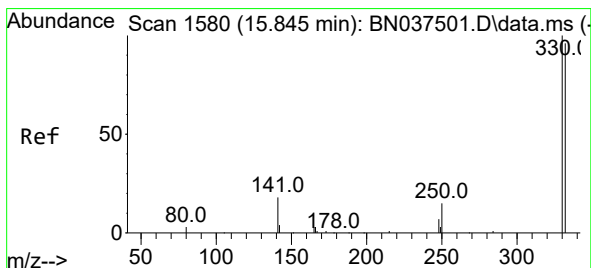
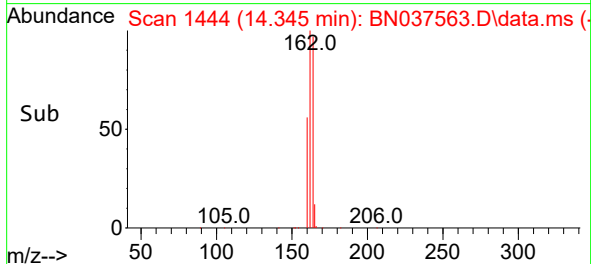
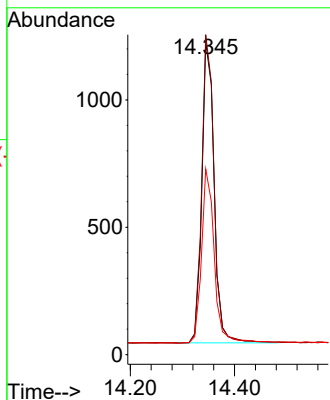
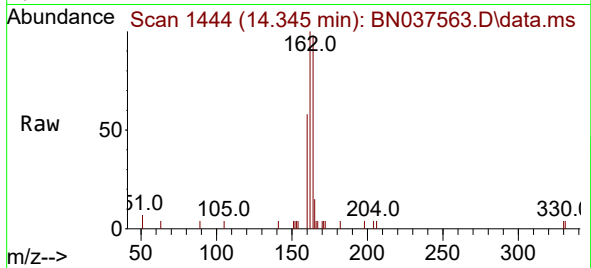


#13
 Acenaphthene-d10
 Concen: 0.400 ng
 RT: 14.345 min Scan# 14
 Delta R.T. -0.011 min
 Lab File: BN037563.D
 Acq: 05 Aug 2025 11:59

Instrument :
 BNA_N
 ClientSampleId :
 RW7-SP100-20250731

Tgt Ion:164 Resp: 1937

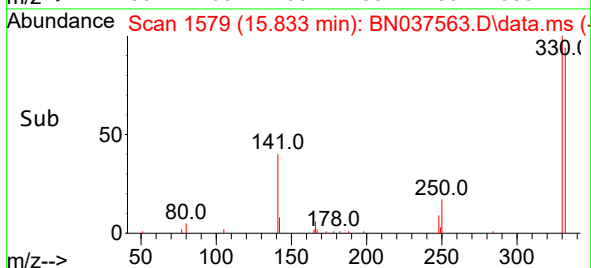
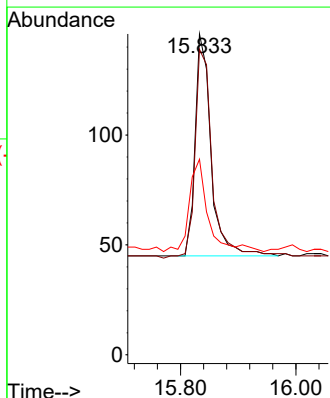
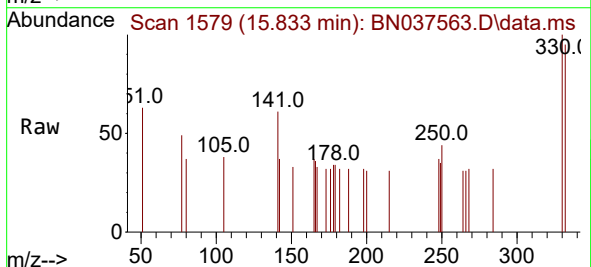
Ion	Ratio	Lower	Upper
164	100		
162	102.4	82.0	123.0
160	59.5	42.4	63.6

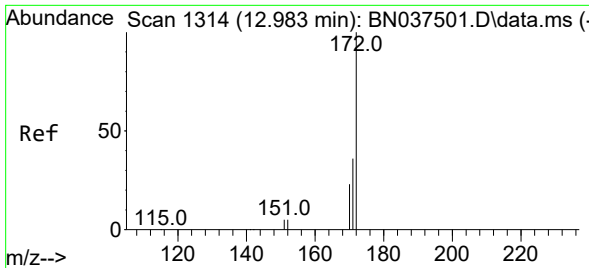


#14
 2,4,6-Tribromophenol
 Concen: 0.204 ng
 RT: 15.833 min Scan# 1579
 Delta R.T. -0.012 min
 Lab File: BN037563.D
 Acq: 05 Aug 2025 11:59

Tgt Ion:330 Resp: 194

Ion	Ratio	Lower	Upper
330	100		
332	104.6	76.1	114.1
141	48.5	33.4	50.0



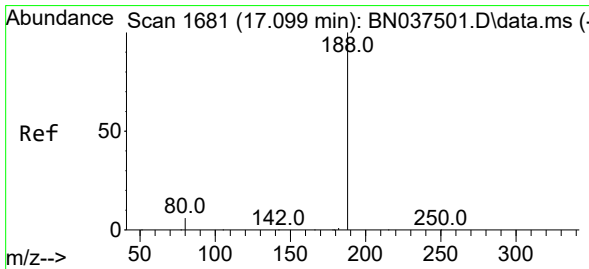
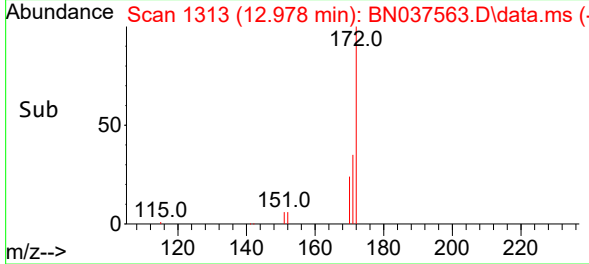
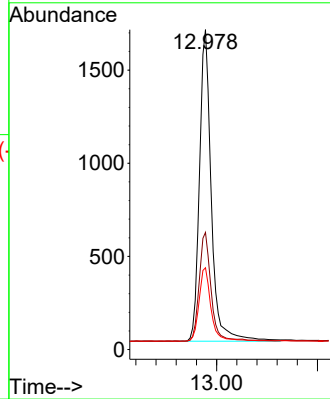
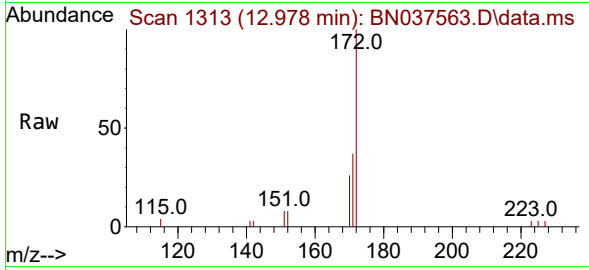


#15
 2-Fluorobiphenyl
 Concen: 0.378 ng
 RT: 12.978 min Scan# 11
 Delta R.T. -0.005 min
 Lab File: BN037563.D
 Acq: 05 Aug 2025 11:59

Instrument :
 BNA_N
 ClientSampleId :
 RW7-SP100-20250731

Tgt Ion:172 Resp: 3806

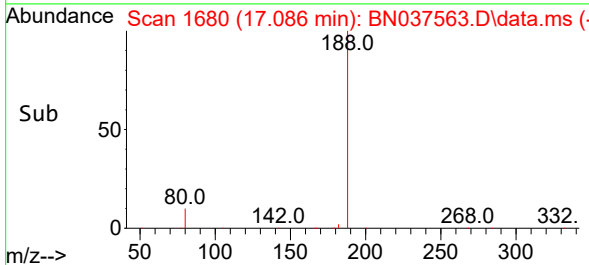
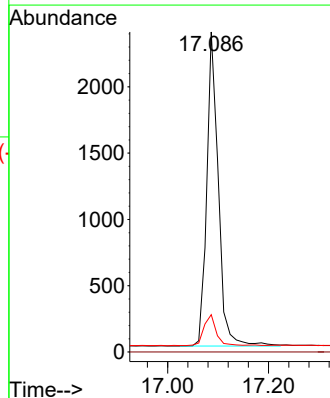
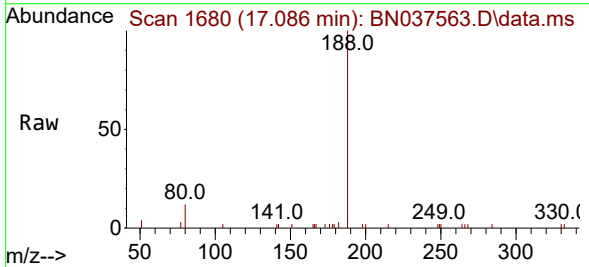
Ion	Ratio	Lower	Upper
172	100		
171	36.6	29.4	44.2
170	25.6	19.4	29.0

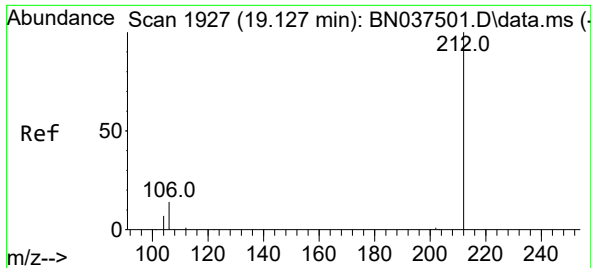


#19
 Phenanthrene-d10
 Concen: 0.400 ng
 RT: 17.086 min Scan# 1680
 Delta R.T. -0.012 min
 Lab File: BN037563.D
 Acq: 05 Aug 2025 11:59

Tgt Ion:188 Resp: 3786

Ion	Ratio	Lower	Upper
188	100		
94	0.0	0.0	0.0
80	11.7	6.0	9.0#



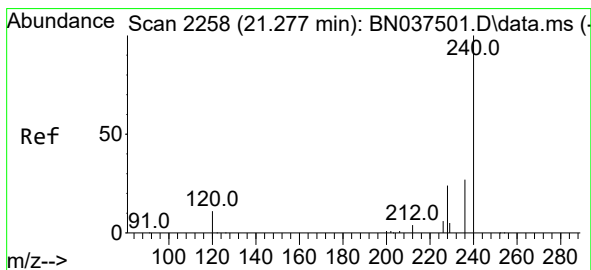
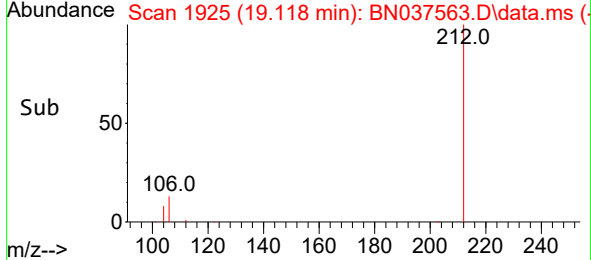
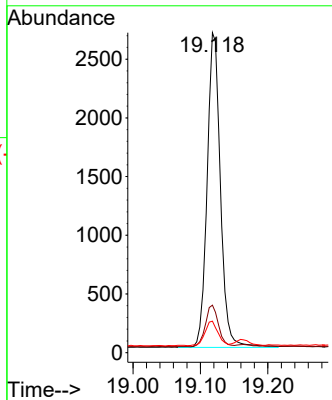
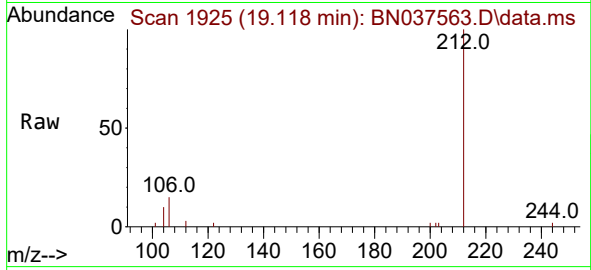


#27
 Fluoranthene-d10
 Concen: 0.367 ng
 RT: 19.118 min Scan# 1925
 Delta R.T. -0.009 min
 Lab File: BN037563.D
 Acq: 05 Aug 2025 11:59

Instrument :
 BNA_N
 ClientSampleId :
 RW7-SP100-20250731

Tgt Ion:212 Resp: 3683

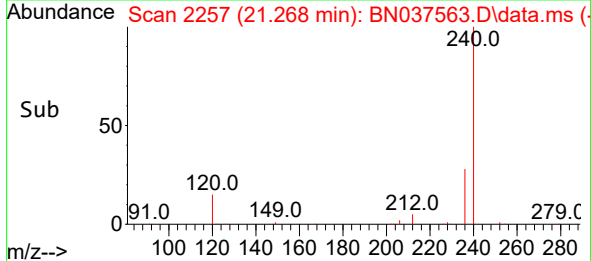
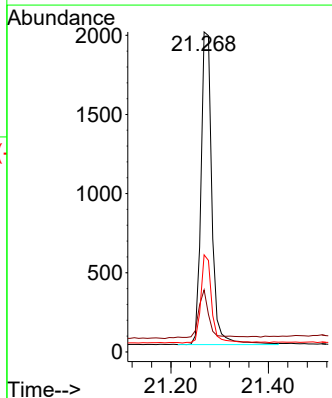
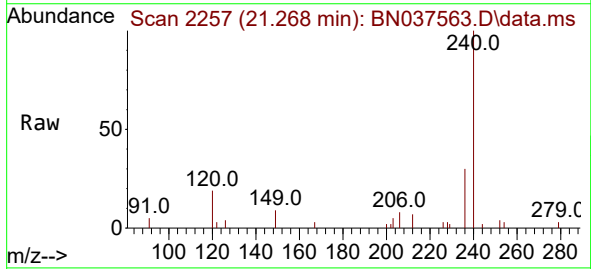
Ion	Ratio	Lower	Upper
212	100		
106	13.1	12.2	18.4
104	7.6	6.7	10.1

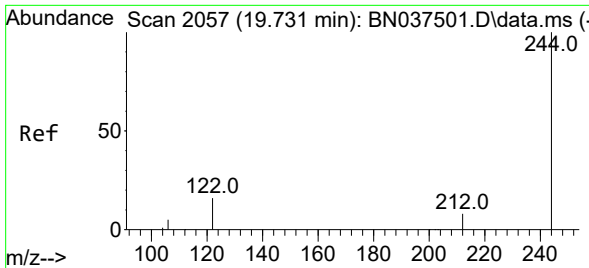


#29
 Chrysene-d12
 Concen: 0.400 ng
 RT: 21.268 min Scan# 2257
 Delta R.T. -0.009 min
 Lab File: BN037563.D
 Acq: 05 Aug 2025 11:59

Tgt Ion:240 Resp: 3070

Ion	Ratio	Lower	Upper
240	100		
120	19.4	10.7	16.1
236	30.3	22.6	33.8

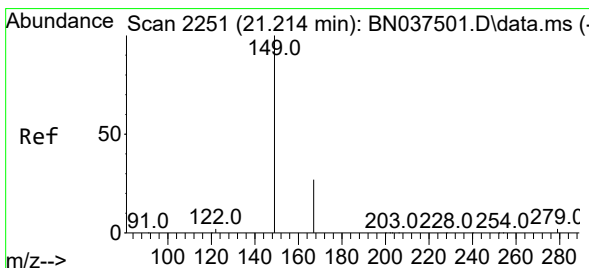
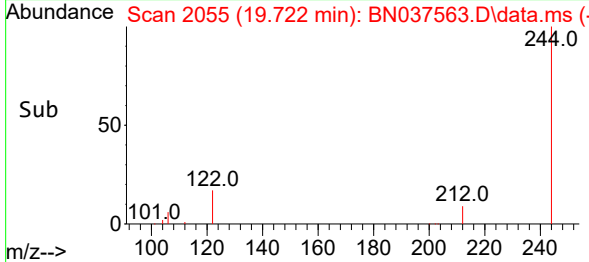
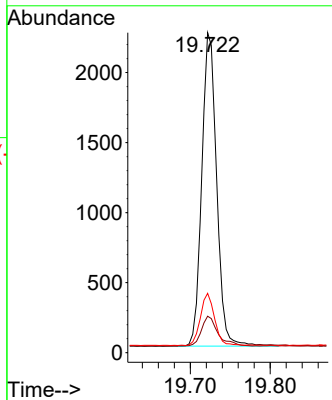
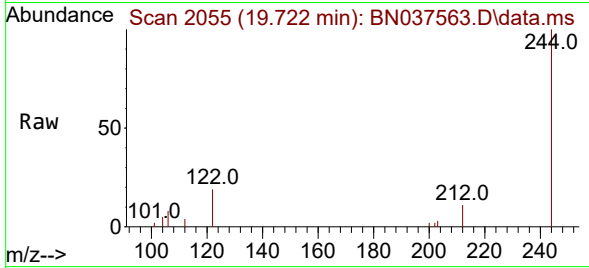




#31
 Terphenyl-d14
 Concen: 0.438 ng
 RT: 19.722 min Scan# 2055
 Delta R.T. -0.009 min
 Lab File: BN037563.D
 Acq: 05 Aug 2025 11:59

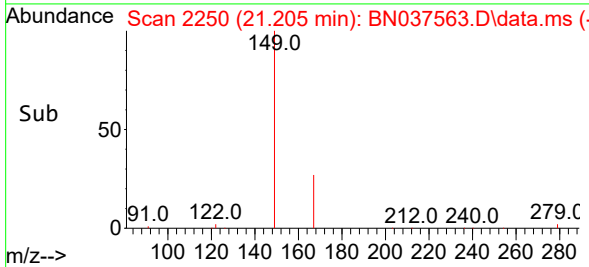
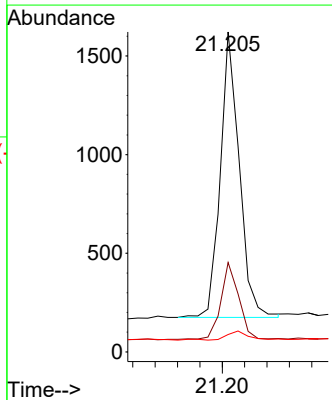
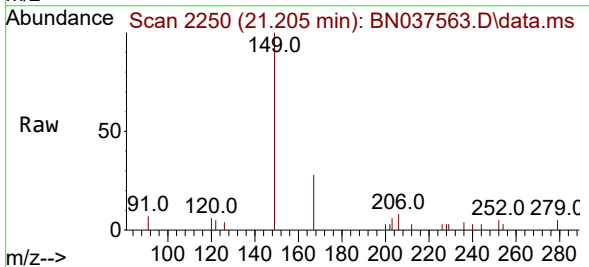
Instrument :
 BNA_N
 ClientSampleId :
 RW7-SP100-20250731

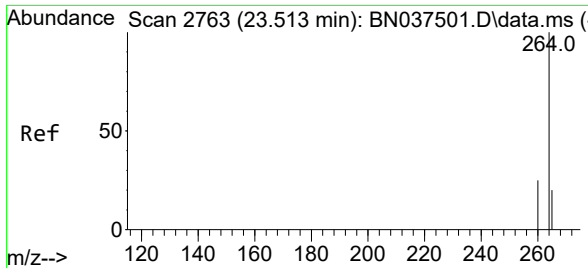
Tgt Ion	Resp	Lower	Upper
244	100		
212	11.4	7.4	11.2#
122	18.5	13.6	20.4



#34
 Bis(2-ethylhexyl)phthalate
 Concen: 0.352 ng
 RT: 21.205 min Scan# 2250
 Delta R.T. -0.009 min
 Lab File: BN037563.D
 Acq: 05 Aug 2025 11:59

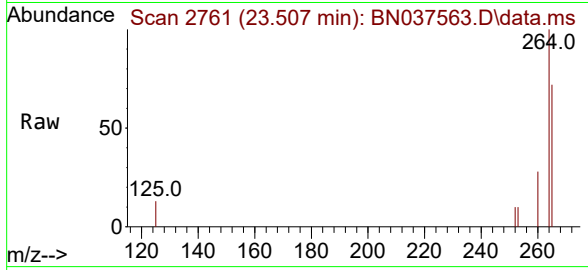
Tgt Ion	Resp	Lower	Upper
149	100		
167	25.1	21.8	32.8
279	3.6	3.0	4.4





#35
 Perylene-d12
 Concen: 0.400 ng
 RT: 23.507 min Scan# 21
 Delta R.T. -0.006 min
 Lab File: BN037563.D
 Acq: 05 Aug 2025 11:59

Instrument :
 BNA_N
 ClientSampleId :
 RW7-SP100-20250731



Tgt Ion:264 Resp: 2628

Ion	Ratio	Lower	Upper
264	100		
260	27.7	21.2	31.8
265	71.7	40.4	60.6

