

Data Path : Z:\svoasrv\HPCHEM1\BNA_N\Data\BN080624\
 Data File : BN033277.D
 Acq On : 06 Aug 2024 17:23
 Operator : MA/JU
 Sample : P3459-03
 Misc :
 ALS Vial : 9 Sample Multiplier: 1

Instrument :
 BNA_N
 ClientSampleId :
 MLS-15-383-398

Quant Time: Aug 06 18:31:50 2024
 Quant Method : Z:\svoasrv\HPCHEM1\BNA_N\Methods\8270-SIM-BN080524.M
 Quant Title : ASP BNA STANDARDS FOR 5 POINT CALIBRATION
 QLast Update : Mon Aug 05 23:57:48 2024
 Response via : Initial Calibration

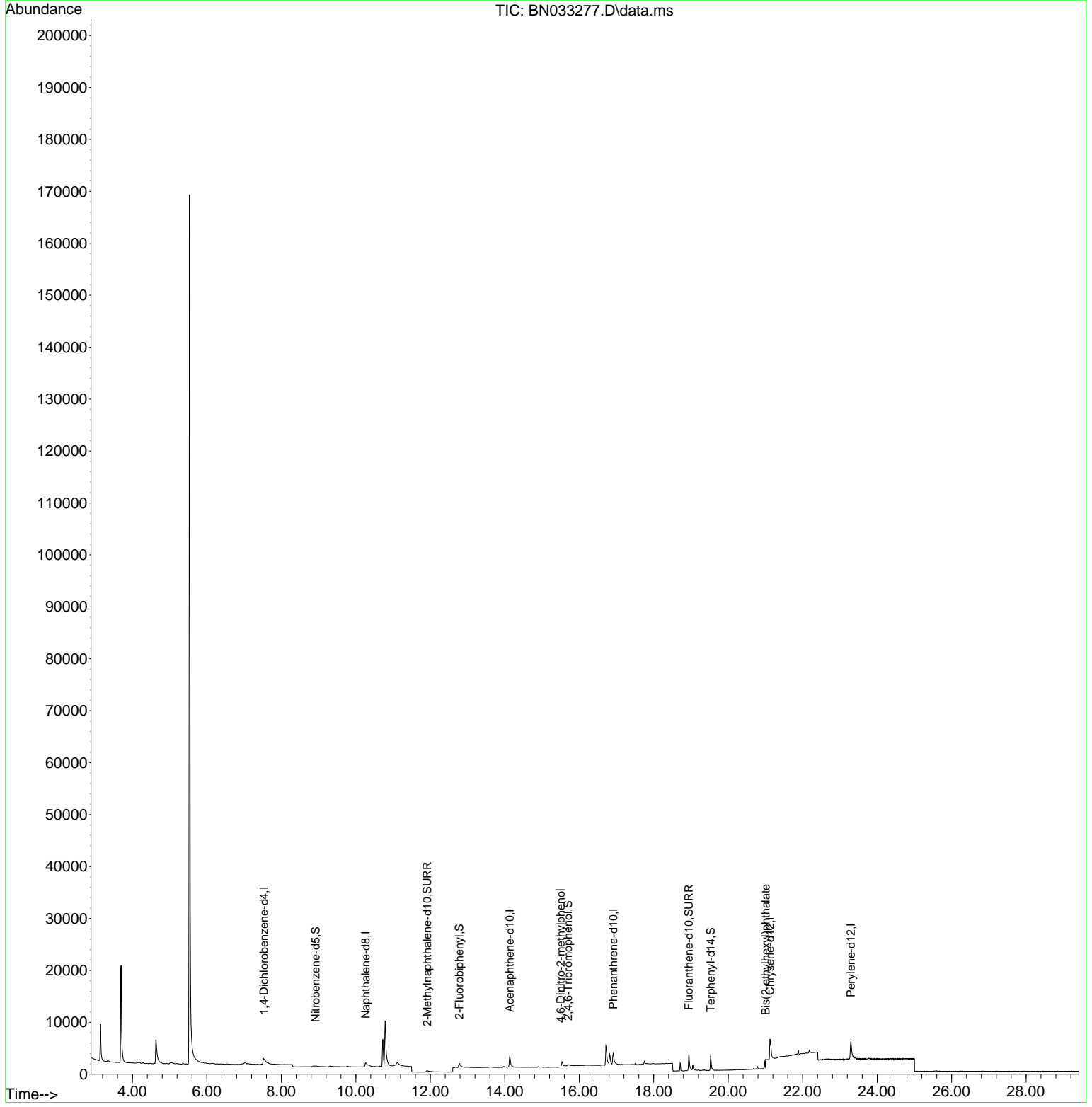
Compound	R. T.	QI on	Response	Conc	Units	Dev(Min)
Internal Standards						
1) 1,4-Dichlorobenzene-d4	7.532	152	897	0.400	ng	0.02
7) Naphthalene-d8	10.266	136	3260	0.400	ng	-0.05
13) Acenaphthene-d10	14.133	164	1982	0.400	ng	0.00
19) Phenanthrene-d10	16.915	188	5340	0.400	ng	0.00
29) Chrysene-d12	21.122	240	6329	0.400	ng	0.00
35) Perylene-d12	23.295	264	7144	0.400	ng	0.00
System Monitoring Compounds						
4) 2-Fluorophenol	5.293	112	4	0.002	ng	0.00
5) Phenol-d6	7.026	99	33	0.011	ng	0.04
8) Nitrobenzene-d5	8.920	82	641	0.245	ng	0.00
11) 2-Methylnaphthalene-d10	11.916	152	1082	0.224	ng	-0.01
14) 2,4,6-Tribromophenol	15.698	330	286	0.387	ng	-0.02
15) 2-Fluorobiphenyl	12.775	172	1887	0.278	ng	-0.03
27) Fluoranthene-d10	18.943	212	5085	0.340	ng	0.00
31) Terphenyl-d14	19.529	244	4177	0.382	ng	-0.02
Target Compounds						
2) 1,4-Dioxane	3.047	88	59	Below Cal	#	25
20) 4,6-Dinitro-2-methylph...	15.501	198	4	0.252	ng	# 67
34) Bis(2-ethylhexyl)phtha...	21.006	149	1256	0.287	ng	# 83

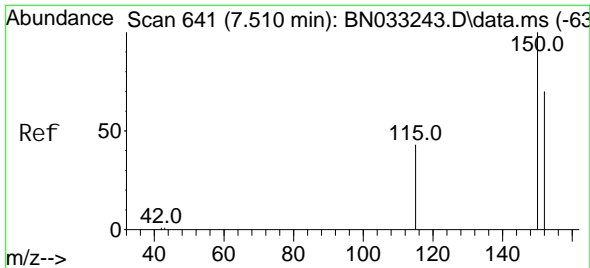
(#) = qualifier out of range (m) = manual integration (+) = signals summed

Data Path : Z:\svoasrv\HPCHEM1\BNA_N\Data\BN080624\
 Data File : BN033277.D
 Acq On : 06 Aug 2024 17:23
 Operator : MA/JU
 Sample : P3459-03
 Misc :
 ALS Vial : 9 Sample Multiplier: 1

Instrument :
 BNA_N
ClientSampleId :
 MLS-15-383-398

Quant Time: Aug 06 18:31:50 2024
 Quant Method : Z:\svoasrv\HPCHEM1\BNA_N\Methods\8270-SIM-BN080524.M
 Quant Title : ASP BNA STANDARDS FOR 5 POINT CALIBRATION
 QLast Update : Mon Aug 05 23:57:48 2024
 Response via : Initial Calibration



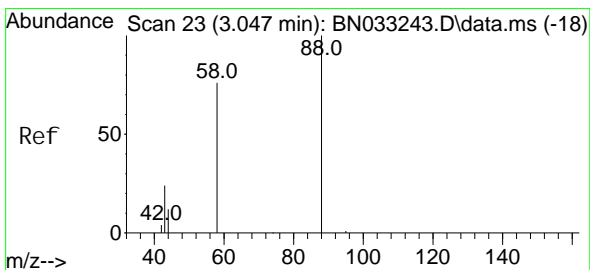
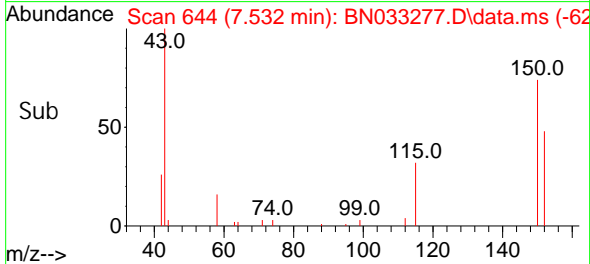
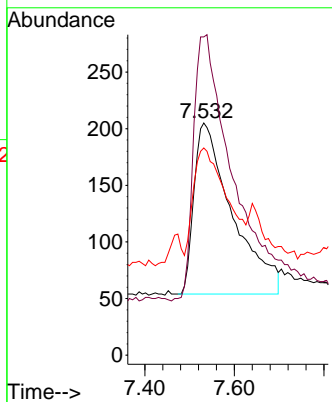
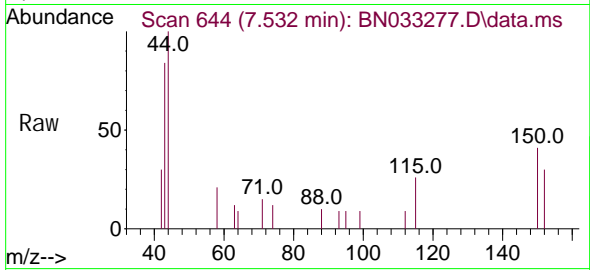


#1
 1, 4-Di chl orobenzene-d4
 Concen: 0.400 ng
 RT: 7.532 min Scan# 64
 Delta R.T. 0.022 min
 Lab File: BN033277.D
 Acq: 06 Aug 2024 17:23

Instrument :
 BNA_N
 ClientSampleId :
 MLS-15-383-398

Tgt Ion: 152 Resp: 897

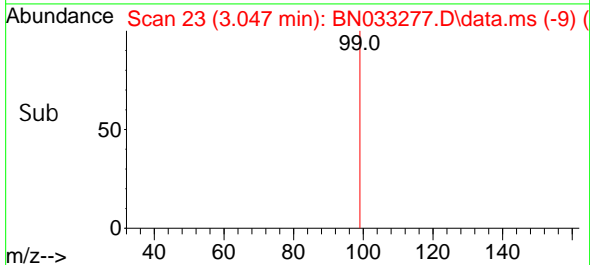
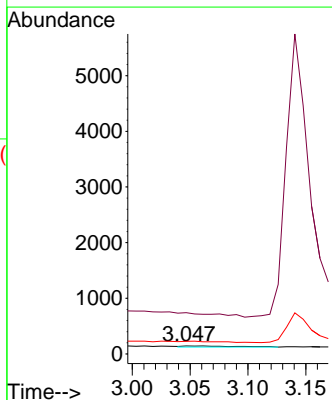
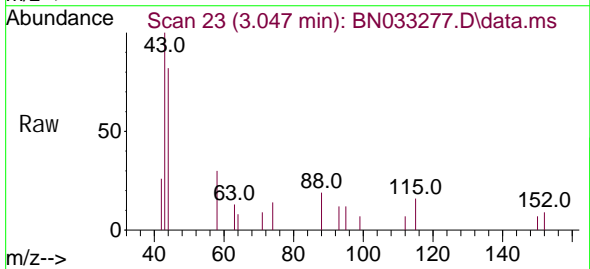
Ion	Ratio	Lower	Upper
152	100		
150	137.1	108.2	162.2
115	89.3	70.5	105.7

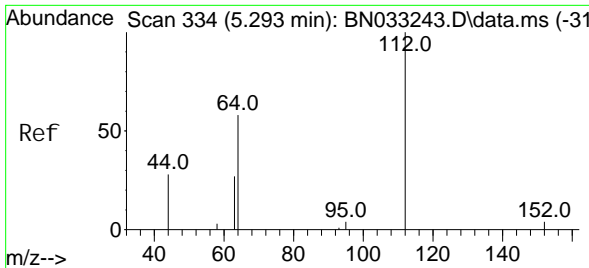


#2
 1, 4-Di oxane
 Concen: Below Cal
 RT: 3.047 min Scan# 23
 Delta R.T. -0.000 min
 Lab File: BN033277.D
 Acq: 06 Aug 2024 17:23

Tgt Ion: 88 Resp: 59

Ion	Ratio	Lower	Upper
88	100		
43	0.0	18.6	28.0#
58	0.0	54.5	81.7#

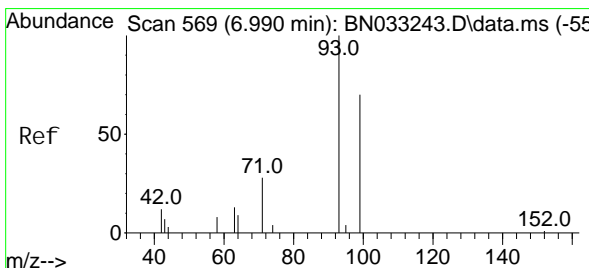
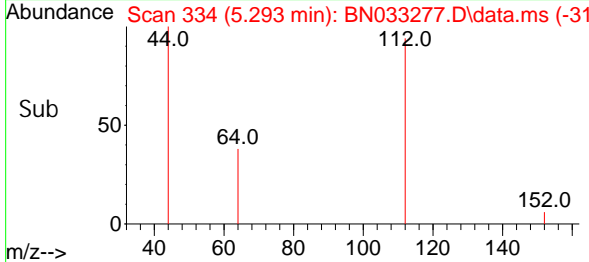
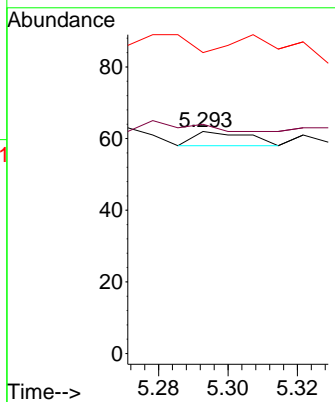
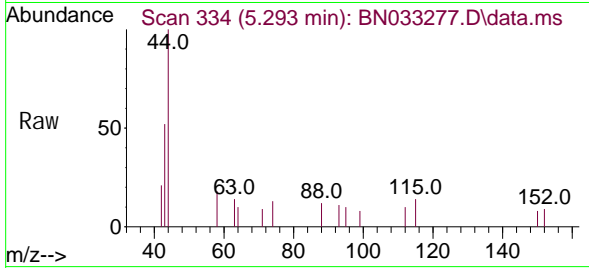




#4
 2-Fluorophenol
 Concen: 0.002 ng
 RT: 5.293 min Scan# 31
 Delta R.T. -0.000 min
 Lab File: BN033277.D
 Acq: 06 Aug 2024 17:23

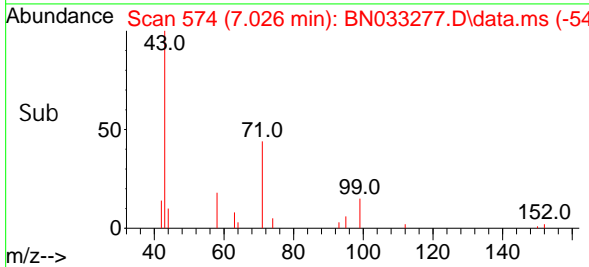
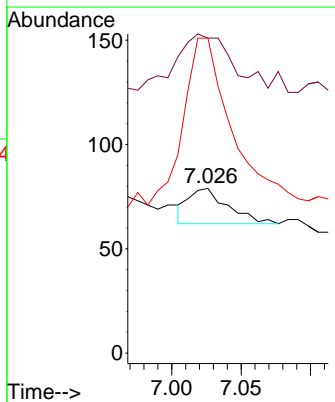
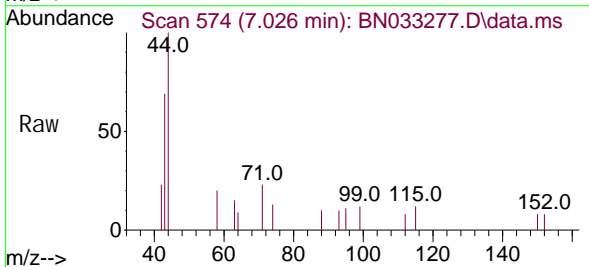
Instrument :
 BNA_N
 ClientSampleId :
 MLS-15-383-398

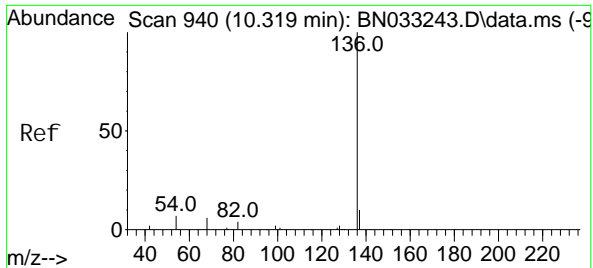
Tgt Ion	Resp	Lower	Upper
112	100		
64	0.0	18.0	27.0#
63	250.0	0.0	0.0#



#5
 Phenol -d6
 Concen: 0.011 ng
 RT: 7.026 min Scan# 574
 Delta R.T. 0.036 min
 Lab File: BN033277.D
 Acq: 06 Aug 2024 17:23

Tgt Ion	Resp	Lower	Upper
99	100		
42	384.8	0.0	0.0#
71	621.2	0.0	0.0#



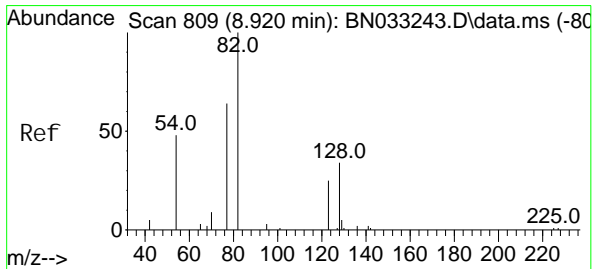
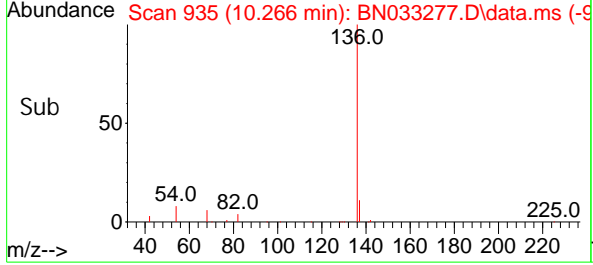
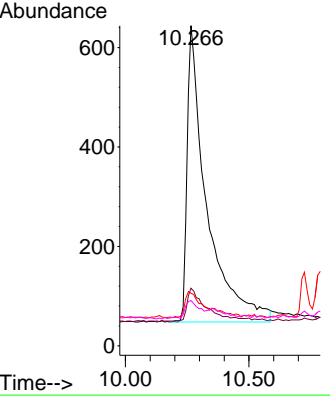
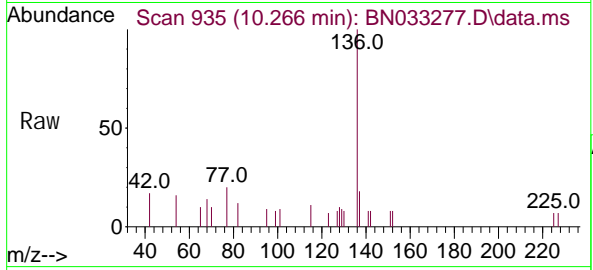


#7
 Naphthalene-d8
 Concen: 0.400 ng
 RT: 10.266 min Scan# 910
 Delta R.T. -0.053 min
 Lab File: BN033277.D
 Acq: 06 Aug 2024 17:23

Instrument : BNA_N
 ClientSampleId : MLS-15-383-398

Tgt Ion: 136 Resp: 3260

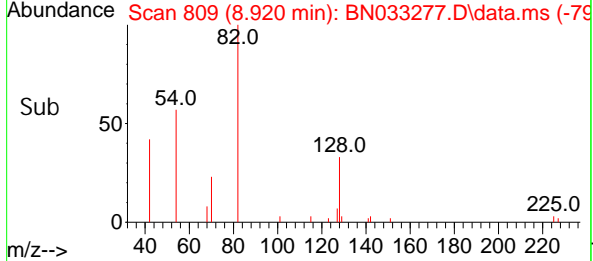
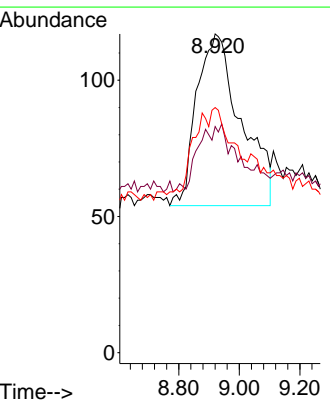
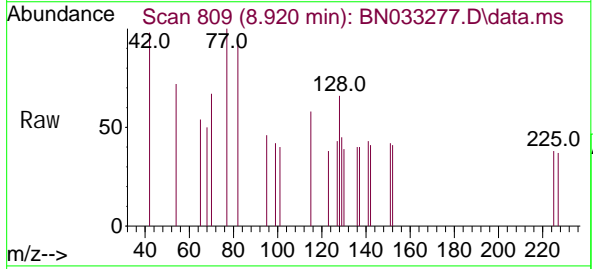
Ion	Ratio	Lower	Upper
136	100		
137	18.0	14.1	21.1
54	16.5	13.8	20.8
68	14.1	12.4	18.6

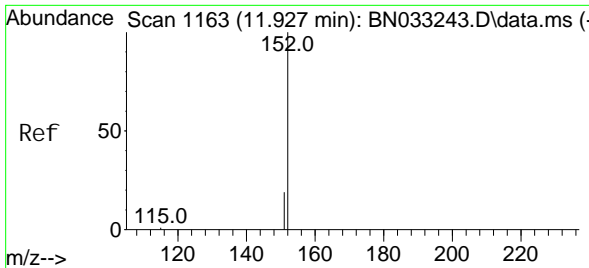


#8
 Nitrobenzene-d5
 Concen: 0.245 ng
 RT: 8.920 min Scan# 809
 Delta R.T. 0.000 min
 Lab File: BN033277.D
 Acq: 06 Aug 2024 17:23

Tgt Ion: 82 Resp: 641

Ion	Ratio	Lower	Upper
82	100		
128	70.9	54.8	82.2
54	76.9	55.9	83.9

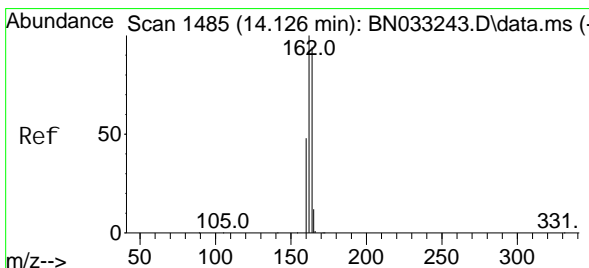
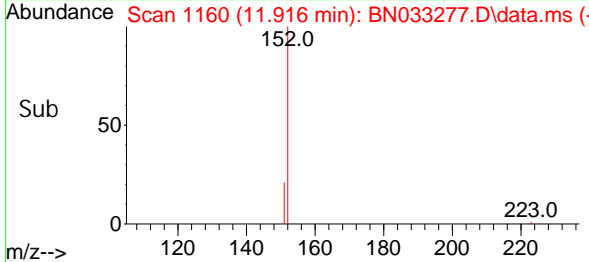
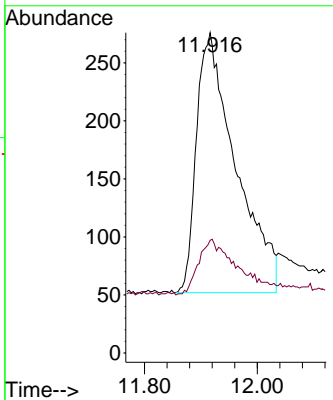
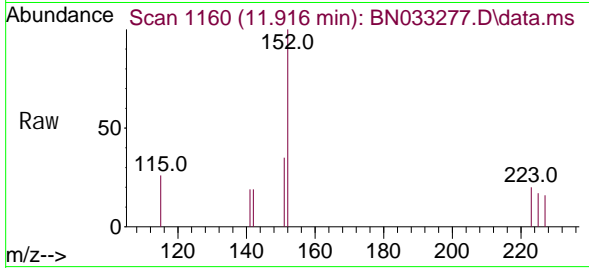




#11
 2-Methyl naphthalene-d10
 Concen: 0.224 ng
 RT: 11.916 min Scan# 1160
 Delta R.T. -0.011 min
 Lab File: BN033277.D
 Acq: 06 Aug 2024 17:23

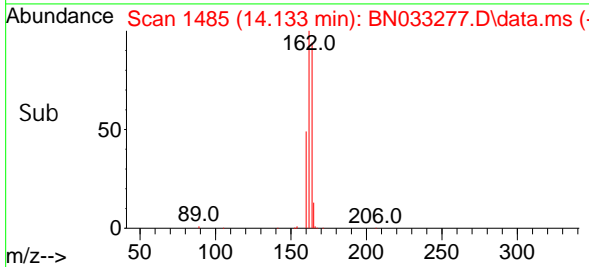
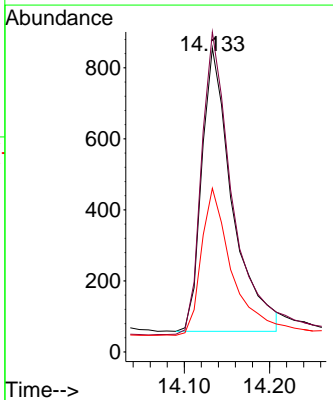
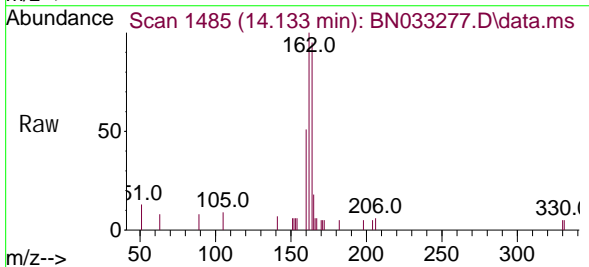
Instrument :
 BNA_N
 ClientSampleId :
 MLS-15-383-398

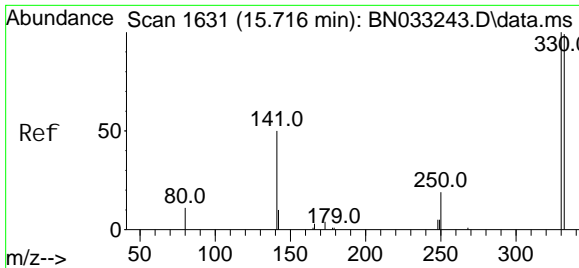
Tgt Ion: 152 Resp: 1082
 Ion Ratio Lower Upper
 152 100
 151 17.7 11.9 17.9



#13
 Acenaphthene-d10
 Concen: 0.400 ng
 RT: 14.133 min Scan# 1485
 Delta R.T. 0.007 min
 Lab File: BN033277.D
 Acq: 06 Aug 2024 17:23

Tgt Ion: 164 Resp: 1982
 Ion Ratio Lower Upper
 164 100
 162 105.3 84.6 127.0
 160 53.9 42.4 63.6

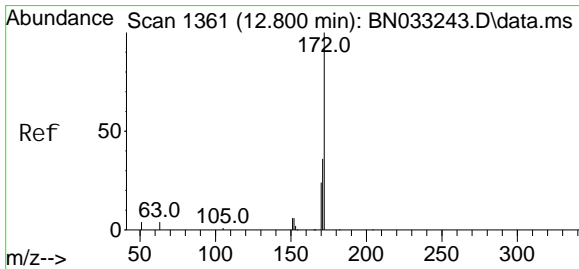
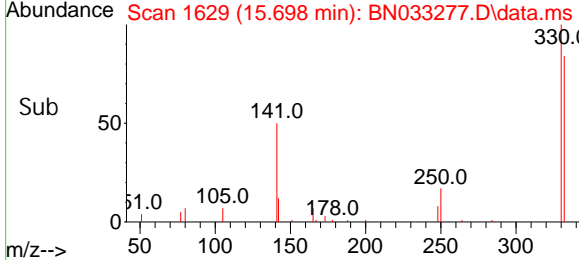
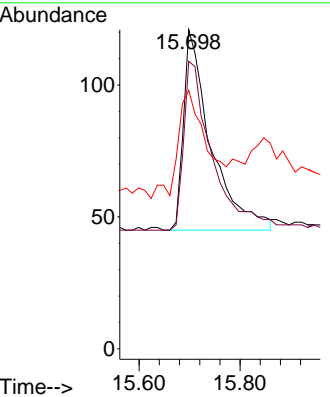
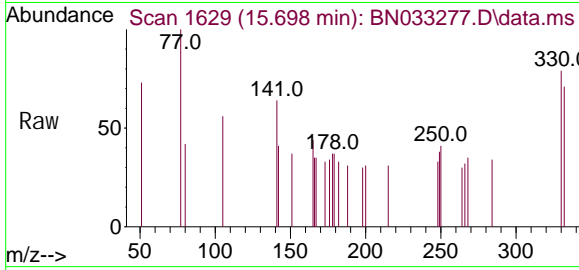




#14
 2, 4, 6-Tri bromophenol
 Concen: 0.387 ng
 RT: 15.698 min Scan# 1629
 Delta R.T. -0.018 min
 Lab File: BN033277.D
 Acq: 06 Aug 2024 17:23

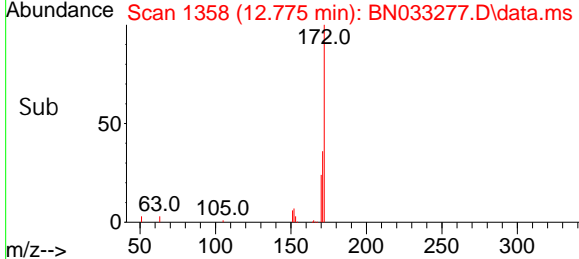
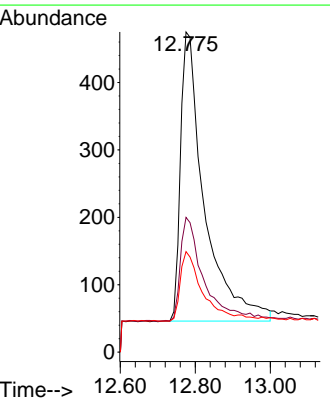
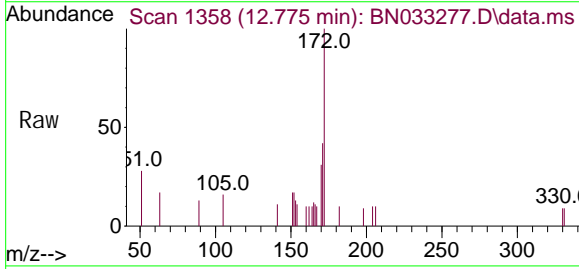
Instrument :
 BNA_N
ClientSampleId :
 MLS-15-383-398

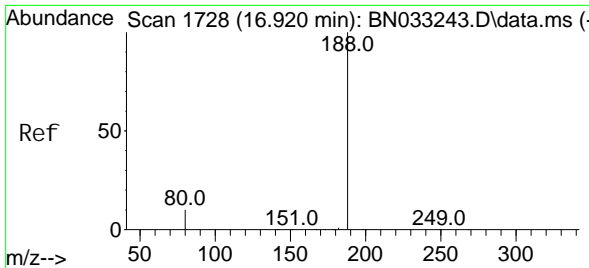
Tgt Ion	Resp	Lower	Upper
330	100		
332	87.8	73.7	110.5
141	52.4	44.8	67.2



#15
 2-Fluorophenyl
 Concen: 0.278 ng
 RT: 12.775 min Scan# 1358
 Delta R.T. -0.025 min
 Lab File: BN033277.D
 Acq: 06 Aug 2024 17:23

Tgt Ion	Resp	Lower	Upper
172	100		
171	42.1	32.3	48.5
170	31.4	23.4	35.2



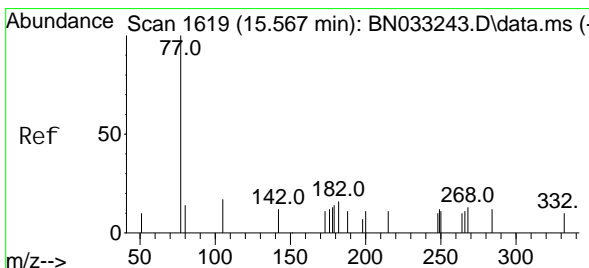
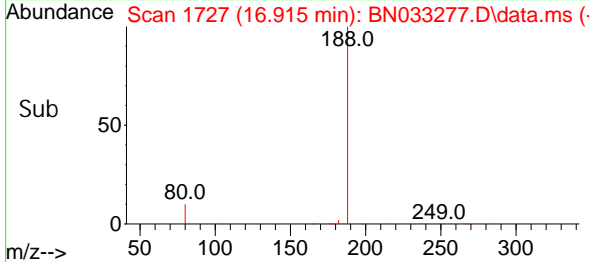
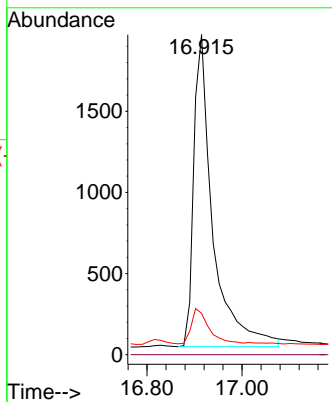
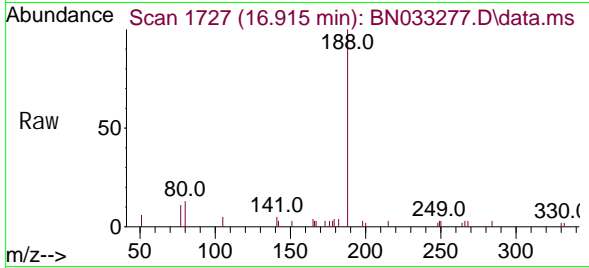


#19
 Phenanthrene-d10
 Concen: 0.400 ng
 RT: 16.915 min Scan# 11
 Delta R.T. -0.005 min
 Lab File: BN033277.D
 Acq: 06 Aug 2024 17:23

Instrument :
 BNA_N
 ClientSampleId :
 MLS-15-383-398

Tgt Ion: 188 Resp: 5340

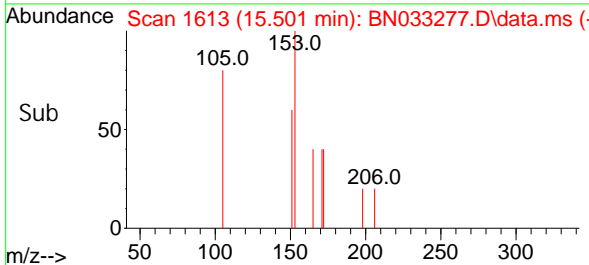
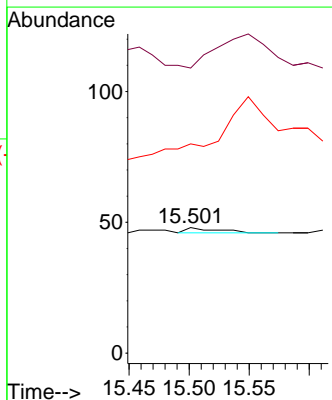
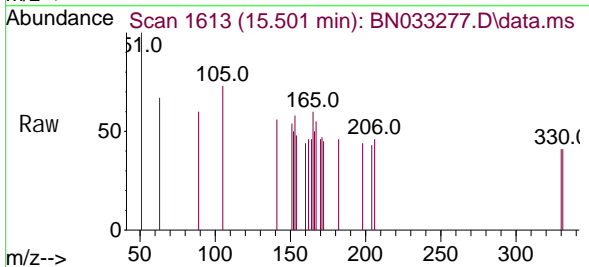
Ion	Ratio	Lower	Upper
188	100		
94	0.0	0.0	0.0
80	13.0	10.2	15.4

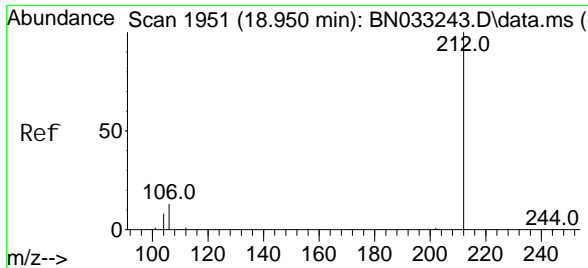


#20
 4,6-Dinitro-2-methyl phenol
 Concen: 0.252 ng
 RT: 15.501 min Scan# 1613
 Delta R.T. -0.066 min
 Lab File: BN033277.D
 Acq: 06 Aug 2024 17:23

Tgt Ion: 198 Resp: 4

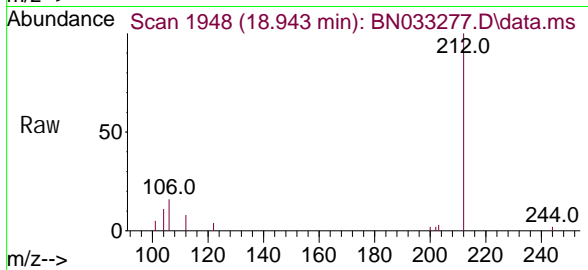
Ion	Ratio	Lower	Upper
198	100		
51	227.1	250.6	375.8#
105	166.7	152.6	229.0





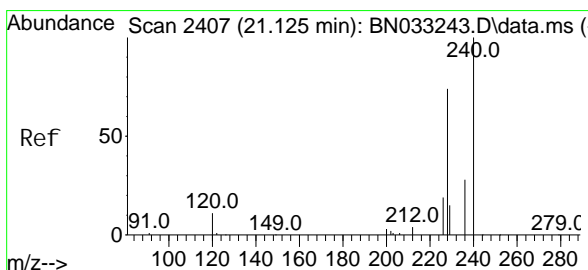
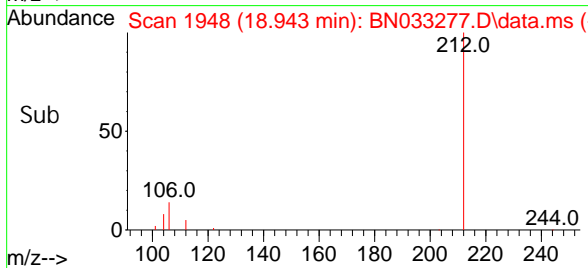
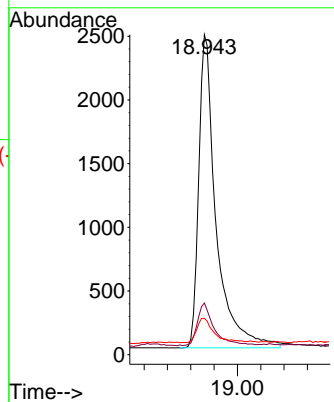
#27
 Fluoranthene-d10
 Concen: 0.340 ng
 RT: 18.943 min Scan# 1948
 Delta R.T. -0.007 min
 Lab File: BN033277.D
 Acq: 06 Aug 2024 17:23

Instrument :
 BNA_N
 ClientSampleId :
 MLS-15-383-398



Tgt Ion: 212 Resp: 5085

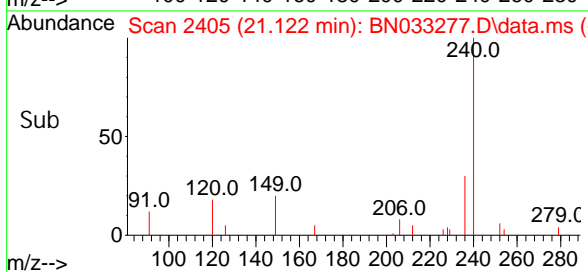
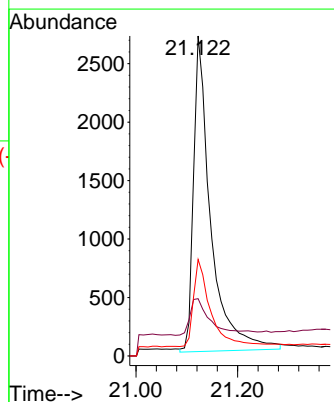
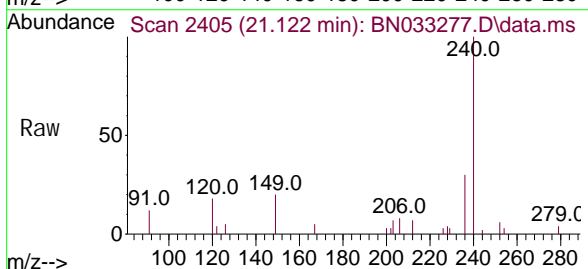
Ion	Ratio	Lower	Upper
212	100		
106	13.2	11.4	17.0
104	7.6	7.1	10.7

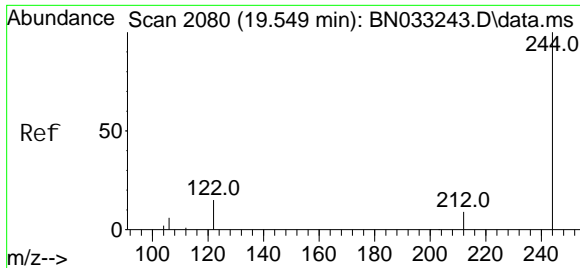


#29
 Chrysene-d12
 Concen: 0.400 ng
 RT: 21.122 min Scan# 2405
 Delta R.T. -0.003 min
 Lab File: BN033277.D
 Acq: 06 Aug 2024 17:23

Tgt Ion: 240 Resp: 6329

Ion	Ratio	Lower	Upper
240	100		
120	17.9	13.3	19.9
236	30.1	23.8	35.6



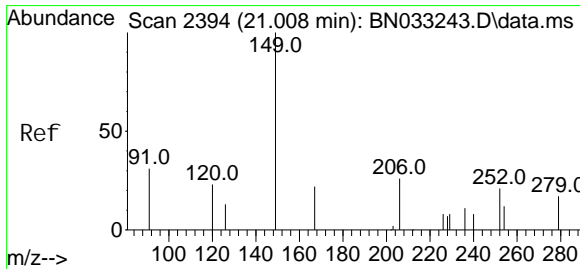
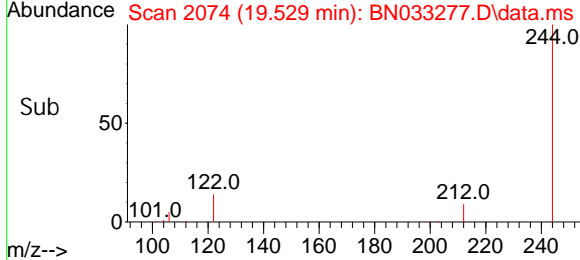
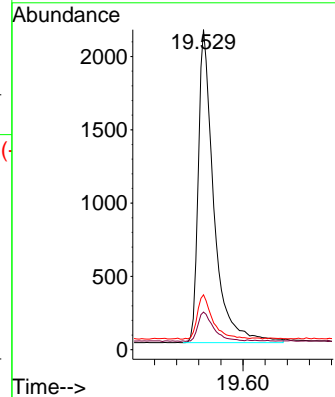
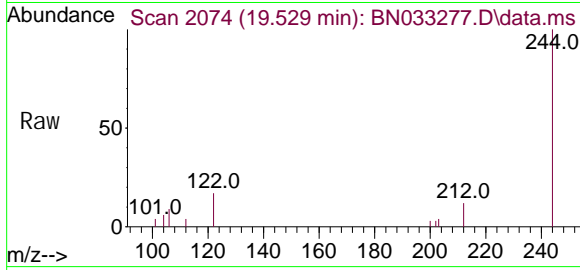


#31
 Terphenyl -d14
 Concen: 0.382 ng
 RT: 19.529 min Scan# 2080
 Delta R.T. -0.021 min
 Lab File: BN033277.D
 Acq: 06 Aug 2024 17:23

Instrument : BNA_N
 ClientSampleId : MLS-15-383-398

Tgt Ion: 244 Resp: 4177

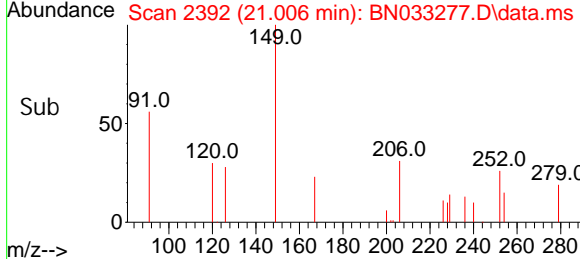
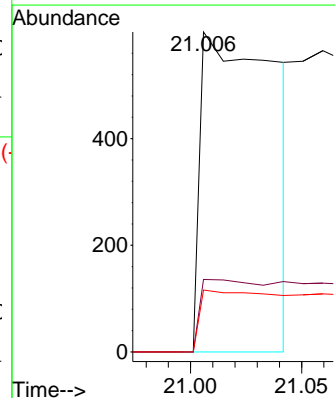
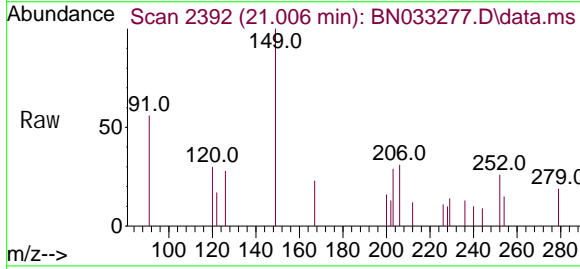
Ion	Ratio	Lower	Upper
244	100		
212	11.8	9.9	14.9
122	17.2	14.1	21.1

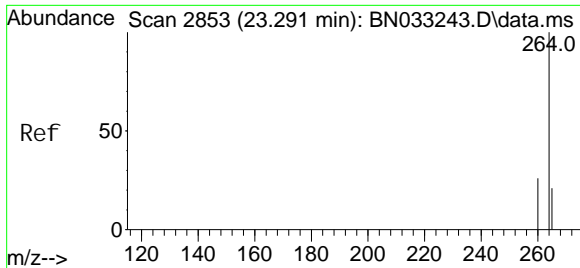


#34
 Bis(2-ethyl hexyl)phthalate
 Concen: 0.287 ng
 RT: 21.006 min Scan# 2392
 Delta R.T. -0.002 min
 Lab File: BN033277.D
 Acq: 06 Aug 2024 17:23

Tgt Ion: 149 Resp: 1256

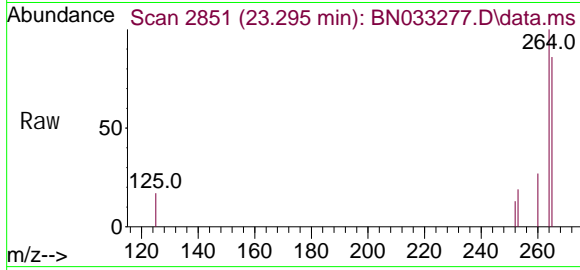
Ion	Ratio	Lower	Upper
149	100		
167	18.2	19.8	29.6#
279	19.8	8.2	12.4#





#35
 Perylene-d12
 Concen: 0.400 ng
 RT: 23.295 min Scan# 2851
 Delta R.T. 0.004 min
 Lab File: BN033277.D
 Acq: 06 Aug 2024 17:23

Instrument :
 BNA_N
ClientSampleId :
 MLS-15-383-398



Tgt Ion: 264 Resp: 7144

Ion	Ratio	Lower	Upper
264	100		
260	26.9	21.4	32.2
265	86.3	66.6	99.8

