

Data Path : Z:\svoasrv\HPCHEM1\BNA\_N\Data\BN081422\  
 Data File : BN021224.D  
 Acq On : 14 Aug 2022 19:16  
 Operator : CG/JU  
 Sample : SSTDCCC0.4  
 Misc :  
 ALS Vial : 10 Sample Multiplier: 1

Instrument :  
 BNA\_N  
 ClientSampleId :  
 SSTD0.4289

Quant Time: Aug 15 00:42:55 2022  
 Quant Method : Z:\SVOASRV\HPCHEM1\BNA\_N\METHODS\SFAM-EPA-SIM-BN080322.M  
 Quant Title : ASP BNA STANDARDS FOR 5 POINT CALIBRATION  
 QLast Update : Sat Aug 13 04:02:44 2022  
 Response via : Initial Calibration

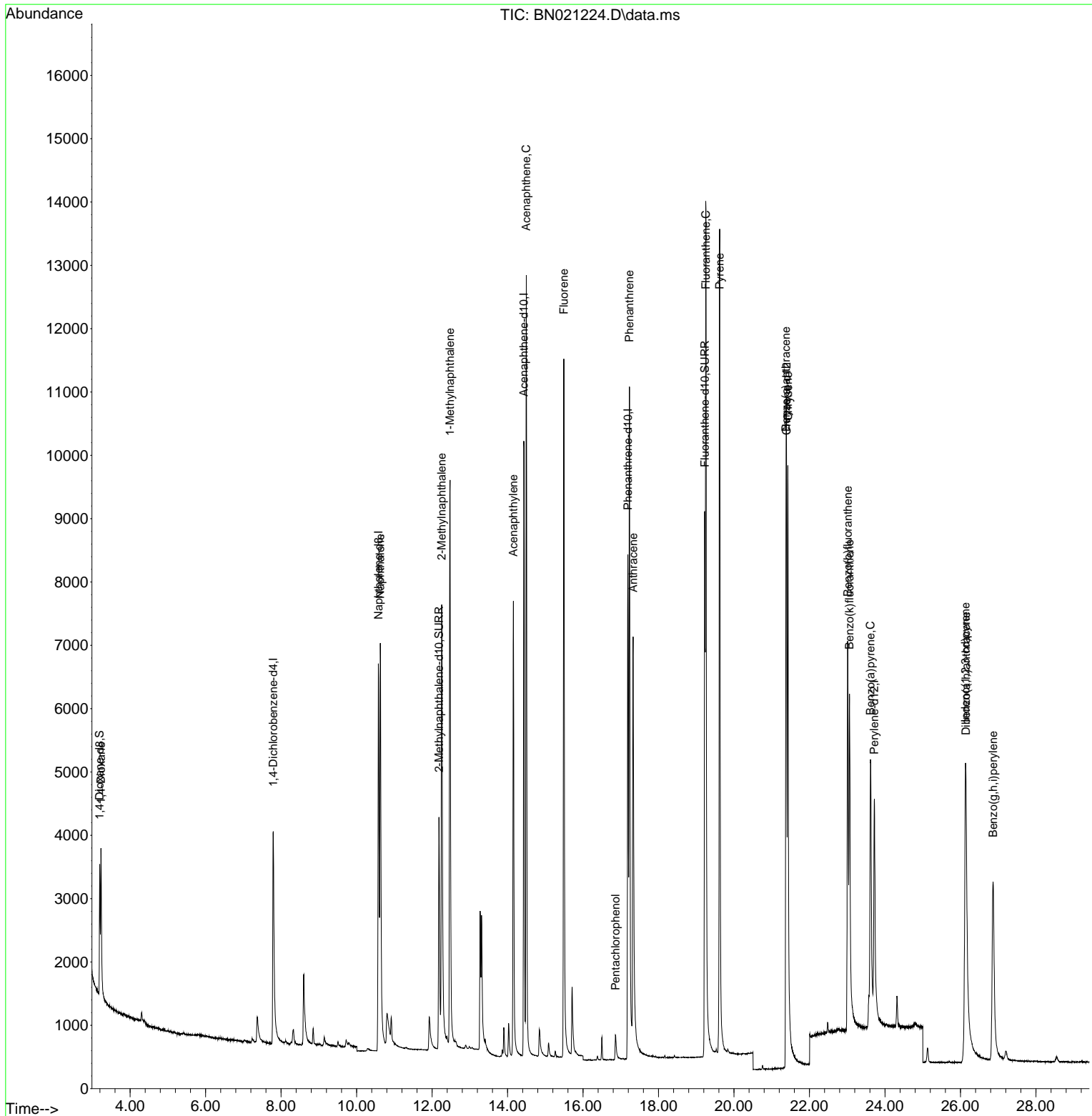
| Compound                    | R.T.   | QIon | Response | Conc  | Units  | Dev(Min) |
|-----------------------------|--------|------|----------|-------|--------|----------|
| Internal Standards          |        |      |          |       |        |          |
| 1) 1,4-Dichlorobenzene-d4   | 7.793  | 152  | 2899     | 0.400 | ng/ul  | 0.00     |
| 4) Naphthalene-d8           | 10.578 | 136  | 10229    | 0.400 | ng/ul  | 0.00     |
| 9) Acenaphthene-d10         | 14.432 | 164  | 5920     | 0.400 | ng/ul  | 0.00     |
| 13) Phenanthrene-d10        | 17.187 | 188  | 10832    | 0.400 | ng/ul  | 0.00     |
| 17) Chrysene-d12            | 21.392 | 240  | 7341     | 0.400 | ng/ul  | 0.00     |
| 23) Perylene-d12            | 23.719 | 264  | 5645     | 0.400 | ng/ul  | 0.00     |
| System Monitoring Compounds |        |      |          |       |        |          |
| 3) 1,4-Dioxane-d8           | 3.194  | 96   | 1445     | 0.390 | ng/ul  | 0.00     |
| 6) 2-Methylnaphthalene-d10  | 12.184 | 152  | 5973     | 0.399 | ng/ul  | 0.00     |
| 18) Fluoranthene-d10        | 19.225 | 212  | 11195    | 0.494 | ng/ul  | 0.00     |
| Target Compounds            |        |      |          |       |        |          |
|                             |        |      |          |       |        | Qvalue   |
| 2) 1,4-Dioxane              | 3.228  | 88   | 1485     | 0.389 | ng/ul# | 89       |
| 5) Naphthalene              | 10.628 | 128  | 11035    | 0.351 | ng/ul  | 99       |
| 7) 2-Methylnaphthalene      | 12.256 | 142  | 6725     | 0.353 | ng/ul  | 99       |
| 8) 1-Methylnaphthalene      | 12.476 | 142  | 7486     | 0.393 | ng/ul  | 100      |
| 10) Acenaphthylene          | 14.155 | 152  | 9687     | 0.350 | ng/ul  | 99       |
| 11) Acenaphthene            | 14.497 | 153  | 7839     | 0.342 | ng/ul  | 98       |
| 12) Fluorene                | 15.492 | 166  | 8443     | 0.337 | ng/ul  | 99       |
| 14) Pentachlorophenol       | 16.858 | 266  | 418      | 0.250 | ng/ul  | 98       |
| 15) Phenanthrene            | 17.229 | 178  | 13036    | 0.336 | ng/ul  | 99       |
| 16) Anthracene              | 17.326 | 178  | 10447    | 0.348 | ng/ul  | 99       |
| 19) Fluoranthene            | 19.257 | 202  | 13630    | 0.420 | ng/ul  | 100      |
| 20) Pyrene                  | 19.620 | 202  | 13969    | 0.416 | ng/ul  | 97       |
| 21) Benzo(a)anthracene      | 21.378 | 228  | 7877     | 0.329 | ng/ul  | 99       |
| 22) Chrysene                | 21.427 | 228  | 10068    | 0.319 | ng/ul  | 100      |
| 24) Benzo(b)fluoranthene    | 23.011 | 252  | 8447     | 0.323 | ng/ul  | 96       |
| 25) Benzo(k)fluoranthene    | 23.058 | 252  | 8909     | 0.323 | ng/ul  | 99       |
| 26) Benzo(a)pyrene          | 23.617 | 252  | 8071     | 0.339 | ng/ul# | 88       |
| 27) Indeno(1,2,3-cd)pyrene  | 26.132 | 276  | 8471     | 0.298 | ng/ul  | 98       |
| 28) Dibenzo(a,h)anthracene  | 26.146 | 278  | 6516     | 0.290 | ng/ul  | 97       |
| 29) Benzo(g,h,i)perylene    | 26.863 | 276  | 7762     | 0.306 | ng/ul  | 98       |

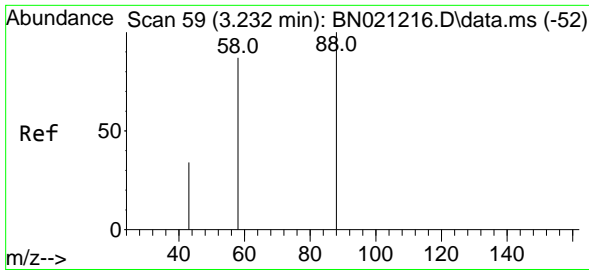
(#) = qualifier out of range (m) = manual integration (+) = signals summed

Data Path : Z:\svoasrv\HPCHEM1\BNA\_N\Data\BN081422\  
 Data File : BN021224.D  
 Acq On : 14 Aug 2022 19:16  
 Operator : CG/JU  
 Sample : SSTDCCC0.4  
 Misc :  
 ALS Vial : 10 Sample Multiplier: 1

Instrument :  
 BNA\_N  
 ClientSampleId :  
 SSTD0.4289

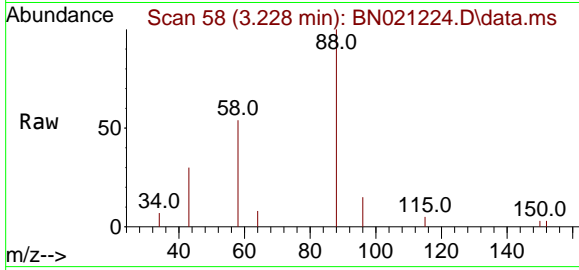
Quant Time: Aug 15 00:42:55 2022  
 Quant Method : Z:\SVOASRV\HPCHEM1\BNA\_N\METHODS\SFAM-EPA-SIM-BN080322.M  
 Quant Title : ASP BNA STANDARDS FOR 5 POINT CALIBRATION  
 QLast Update : Sat Aug 13 04:02:44 2022  
 Response via : Initial Calibration



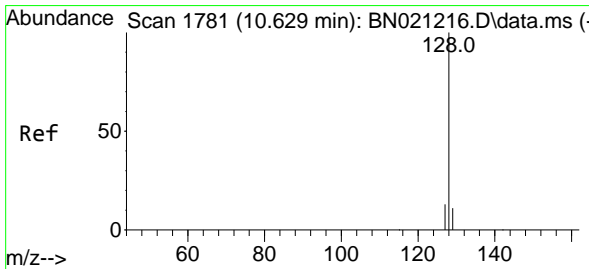
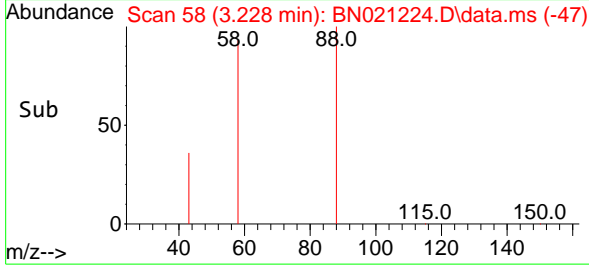
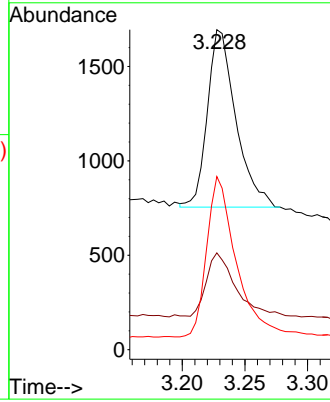


#2  
 1,4-Dioxane  
 Concen: 0.389 ng/u1  
 RT: 3.228 min Scan# 58  
 Delta R.T. -0.004 min  
 Lab File: BN021224.D  
 Acq: 14 Aug 2022 19:16

Instrument :  
 BNA\_N  
 ClientSampleId :  
 SSTD0.4289

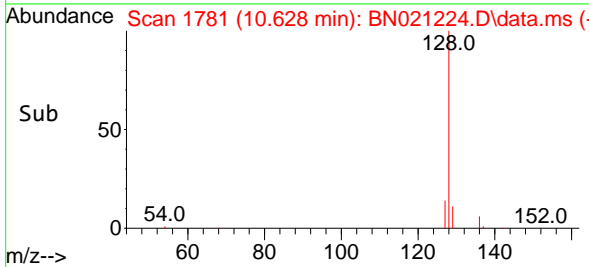
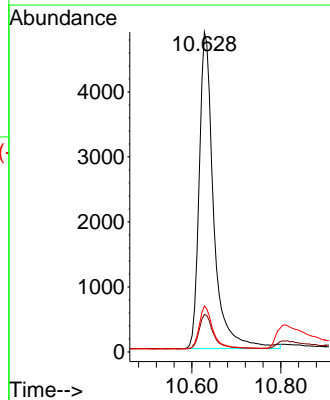
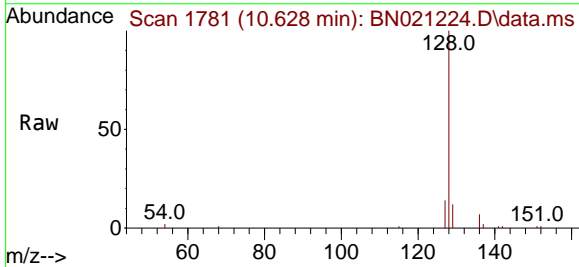


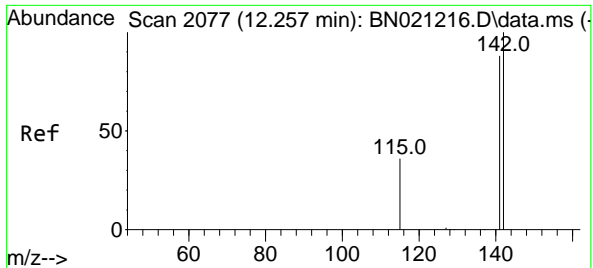
Tgt Ion: 88 Resp: 1485  
 Ion Ratio Lower Upper  
 88 100  
 43 30.3 31.4 47.0#  
 58 54.1 49.0 73.6



#5  
 Naphthalene  
 Concen: 0.351 ng/u1  
 RT: 10.628 min Scan# 1781  
 Delta R.T. -0.001 min  
 Lab File: BN021224.D  
 Acq: 14 Aug 2022 19:16

Tgt Ion:128 Resp: 11035  
 Ion Ratio Lower Upper  
 128 100  
 129 11.7 9.8 14.6  
 127 14.3 11.6 17.4

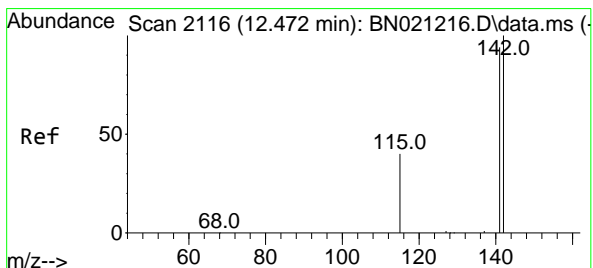
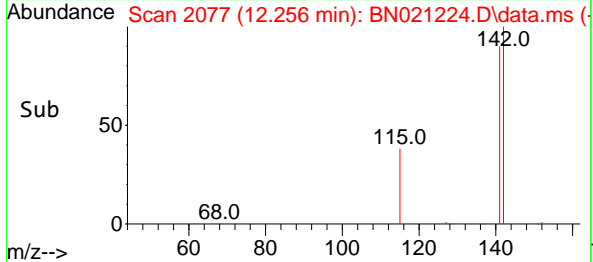
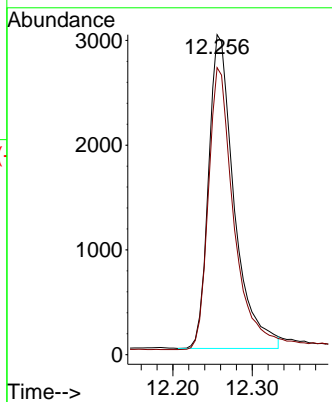
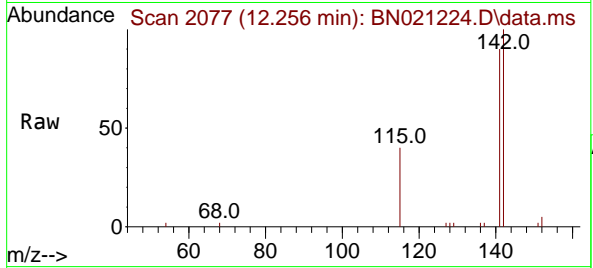




#7  
 2-Methylnaphthalene  
 Concen: 0.353 ng/ul  
 RT: 12.256 min Scan# 2077  
 Delta R.T. -0.001 min  
 Lab File: BN021224.D  
 Acq: 14 Aug 2022 19:16

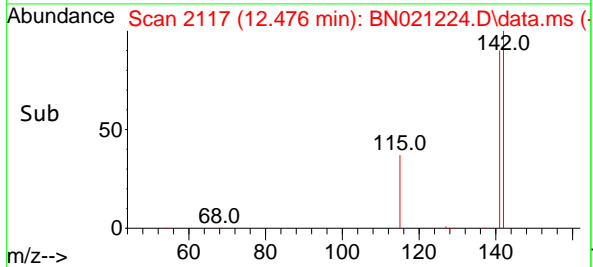
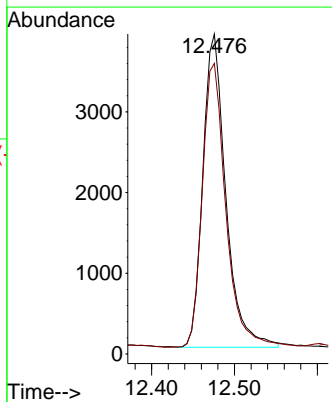
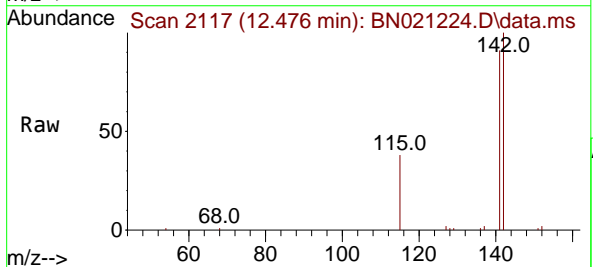
Instrument :  
 BNA\_N  
 ClientSampleId :  
 SSTD0.4289

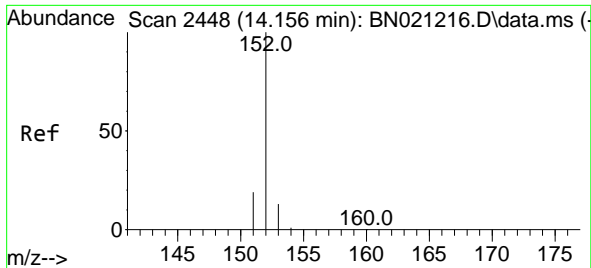
Tgt Ion:142 Resp: 6725  
 Ion Ratio Lower Upper  
 142 100  
 141 89.4 72.2 108.2



#8  
 1-Methylnaphthalene  
 Concen: 0.393 ng/ul  
 RT: 12.476 min Scan# 2117  
 Delta R.T. -0.001 min  
 Lab File: BN021224.D  
 Acq: 14 Aug 2022 19:16

Tgt Ion:142 Resp: 7486  
 Ion Ratio Lower Upper  
 142 100  
 141 92.5 73.9 110.9

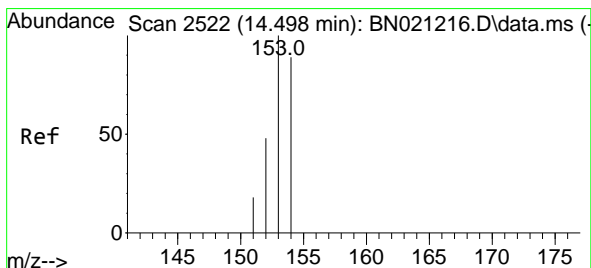
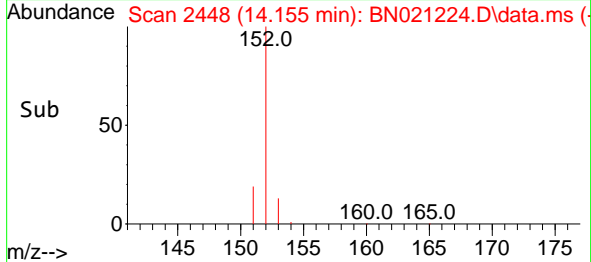
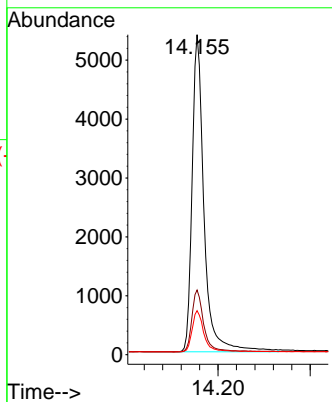
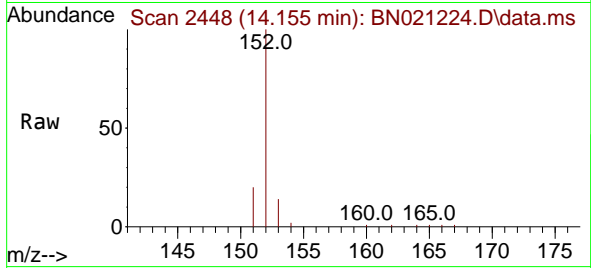




#10  
 Acenaphthylene  
 Concen: 0.350 ng/u1  
 RT: 14.155 min Scan# 2448  
 Delta R.T. -0.001 min  
 Lab File: BN021224.D  
 Acq: 14 Aug 2022 19:16

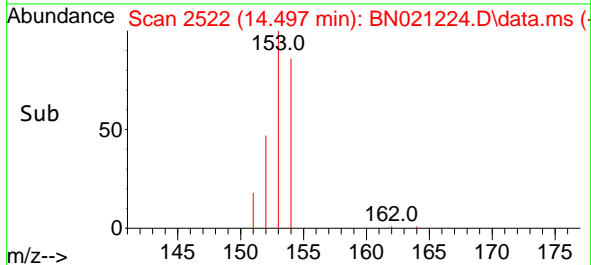
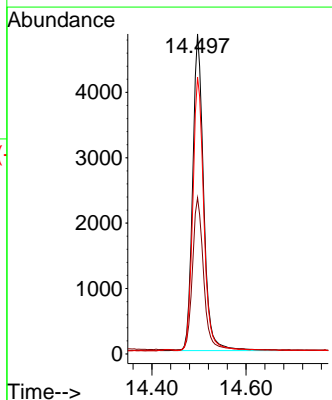
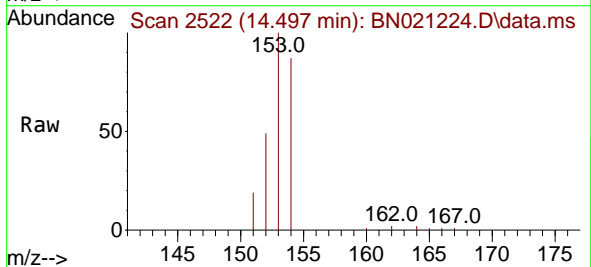
Instrument :  
 BNA\_N  
 ClientSampleId :  
 SST0.4289

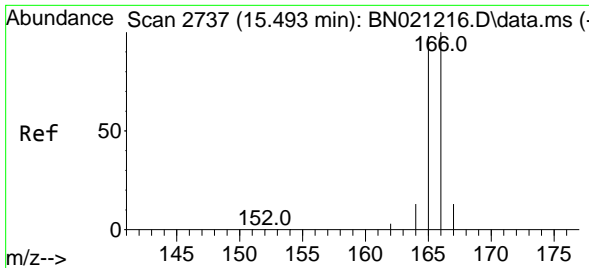
| Tgt Ion | Resp | Lower | Upper |
|---------|------|-------|-------|
| 152     | 9687 |       |       |
| 151     | 20.2 | 16.9  | 25.3  |
| 153     | 13.8 | 11.2  | 16.8  |



#11  
 Acenaphthene  
 Concen: 0.342 ng/u1  
 RT: 14.497 min Scan# 2522  
 Delta R.T. -0.001 min  
 Lab File: BN021224.D  
 Acq: 14 Aug 2022 19:16

| Tgt Ion | Resp | Lower | Upper |
|---------|------|-------|-------|
| 153     | 7839 |       |       |
| 152     | 48.8 | 40.2  | 60.4  |
| 154     | 86.5 | 70.7  | 106.1 |

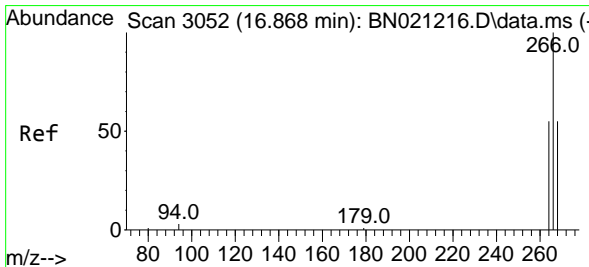
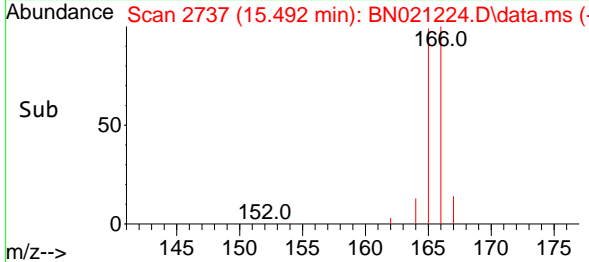
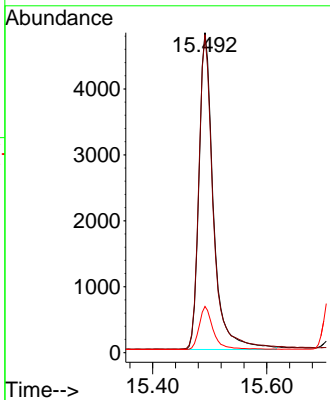
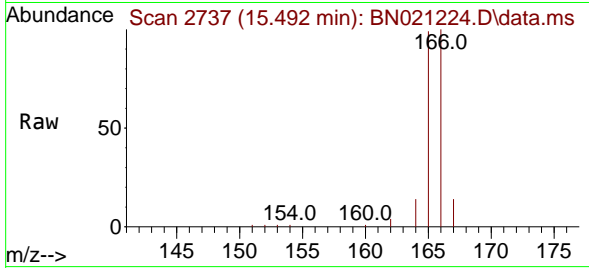




#12  
 Fluorene  
 Concen: 0.337 ng/u1  
 RT: 15.492 min Scan# 21  
 Delta R.T. -0.001 min  
 Lab File: BN021224.D  
 Acq: 14 Aug 2022 19:16

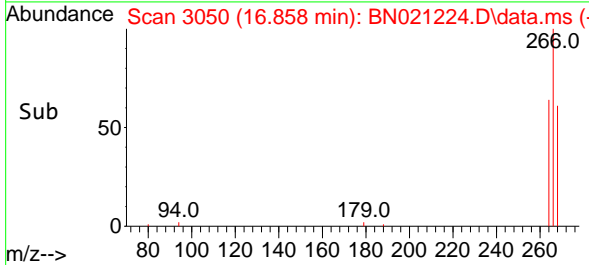
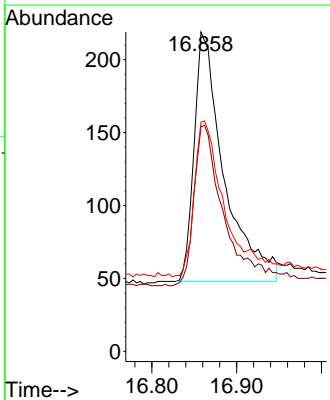
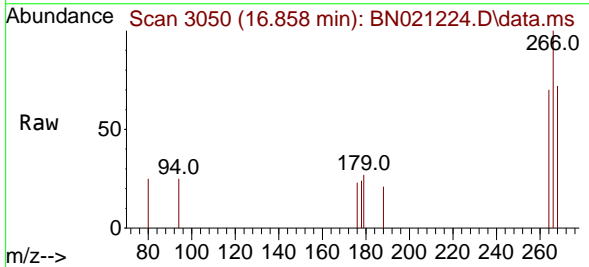
Instrument :  
 BNA\_N  
 ClientSampleId :  
 SSTD0.4289

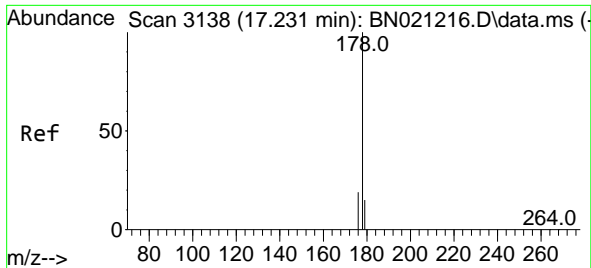
| Tgt Ion | Resp | Lower | Upper |
|---------|------|-------|-------|
| 166     | 100  |       |       |
| 165     | 99.4 | 78.6  | 117.8 |
| 167     | 14.4 | 11.8  | 17.6  |



#14  
 Pentachlorophenol  
 Concen: 0.250 ng/u1  
 RT: 16.858 min Scan# 3050  
 Delta R.T. -0.005 min  
 Lab File: BN021224.D  
 Acq: 14 Aug 2022 19:16

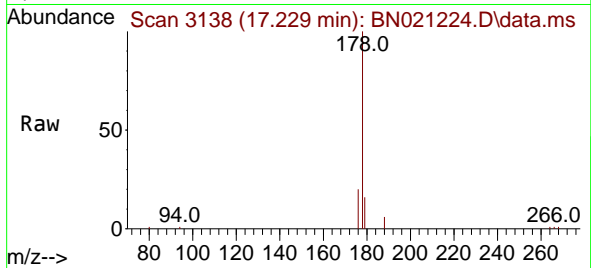
| Tgt Ion | Resp | Lower | Upper |
|---------|------|-------|-------|
| 266     | 100  |       |       |
| 264     | 64.6 | 49.8  | 74.8  |
| 268     | 63.6 | 50.6  | 75.8  |



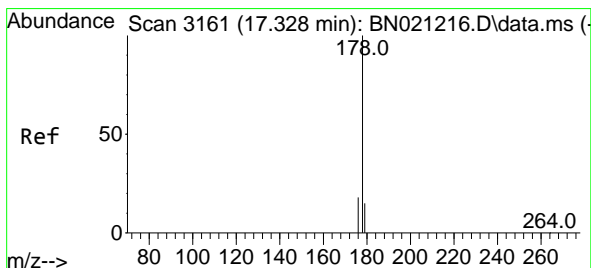
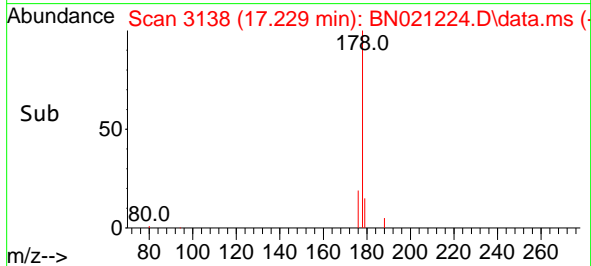
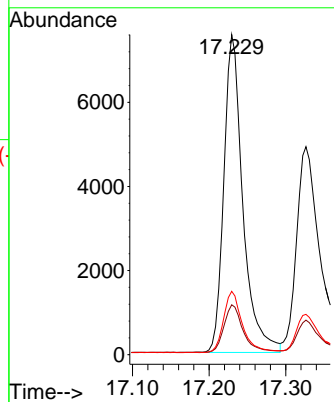


#15  
 Phenanthrene  
 Concen: 0.336 ng/u1  
 RT: 17.229 min Scan# 3138  
 Delta R.T. -0.001 min  
 Lab File: BN021224.D  
 Acq: 14 Aug 2022 19:16

Instrument :  
 BNA\_N  
 ClientSampleId :  
 SSTD0.4289

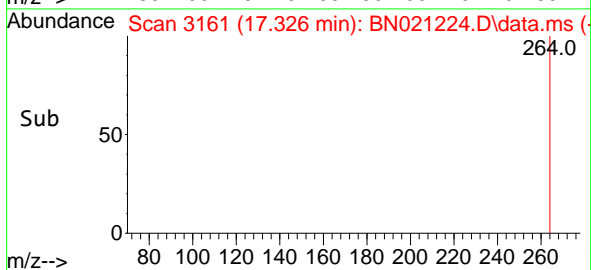
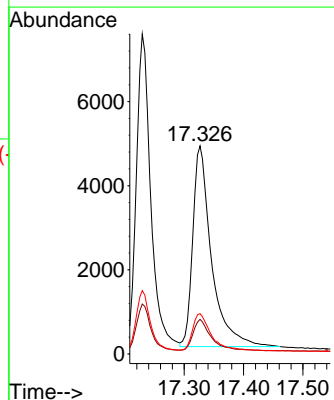
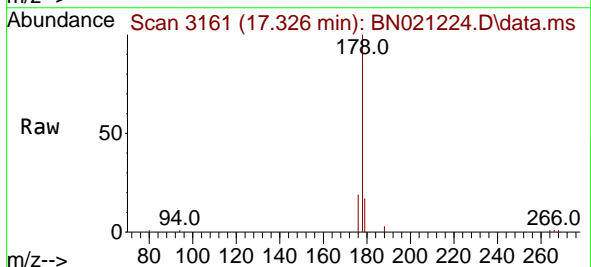


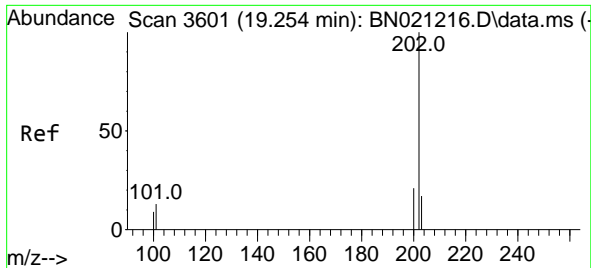
Tgt Ion:178 Resp: 13036  
 Ion Ratio Lower Upper  
 178 100  
 179 15.6 12.8 19.2  
 176 19.8 15.9 23.9



#16  
 Anthracene  
 Concen: 0.348 ng/u1  
 RT: 17.326 min Scan# 3161  
 Delta R.T. -0.001 min  
 Lab File: BN021224.D  
 Acq: 14 Aug 2022 19:16

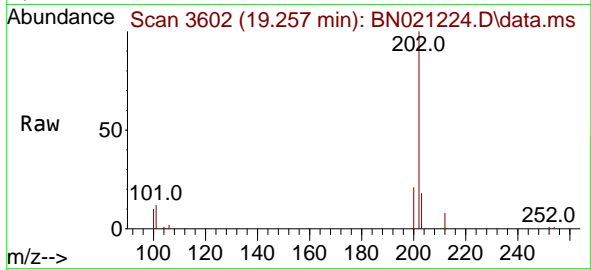
Tgt Ion:178 Resp: 10447  
 Ion Ratio Lower Upper  
 178 100  
 179 16.6 12.9 19.3  
 176 19.4 15.9 23.9



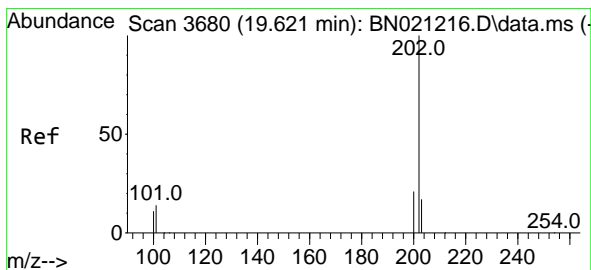
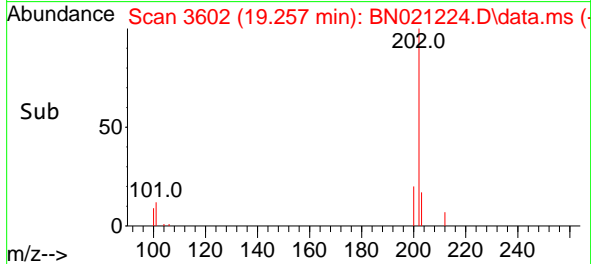
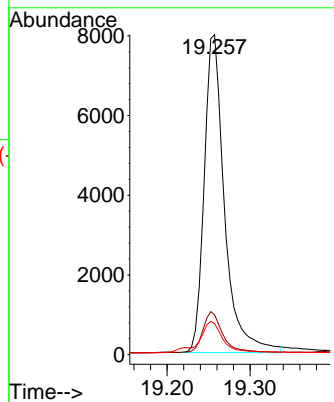


#19  
 Fluoranthene  
 Concen: 0.420 ng/u1  
 RT: 19.257 min Scan# 3602  
 Delta R.T. -0.001 min  
 Lab File: BN021224.D  
 Acq: 14 Aug 2022 19:16

Instrument :  
 BNA\_N  
 ClientSampleId :  
 SSTD0.4289

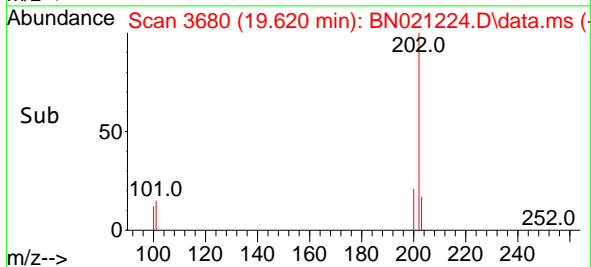
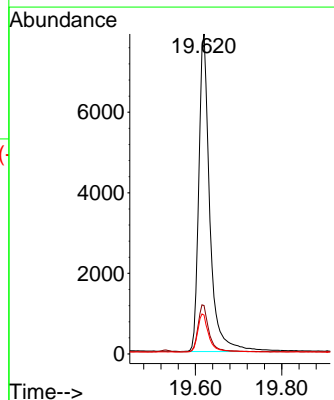
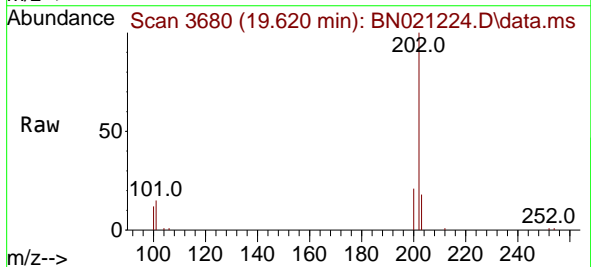


Tgt Ion:202 Resp: 13630  
 Ion Ratio Lower Upper  
 202 100  
 101 12.5 10.0 15.0  
 100 9.7 8.0 12.0

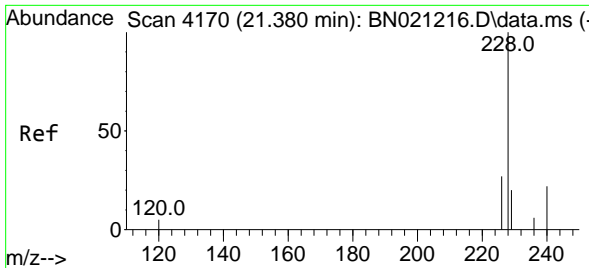


#20  
 Pyrene  
 Concen: 0.416 ng/u1  
 RT: 19.620 min Scan# 3680  
 Delta R.T. -0.001 min  
 Lab File: BN021224.D  
 Acq: 14 Aug 2022 19:16

Tgt Ion:202 Resp: 13969  
 Ion Ratio Lower Upper  
 202 100  
 101 15.1 11.3 16.9  
 100 12.2 9.0 13.4

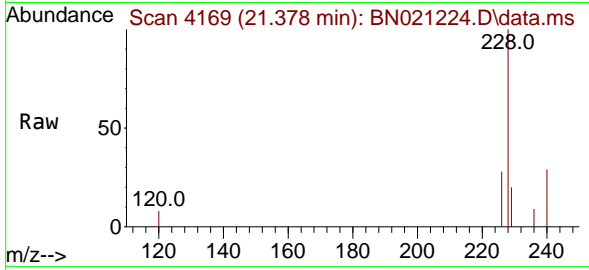




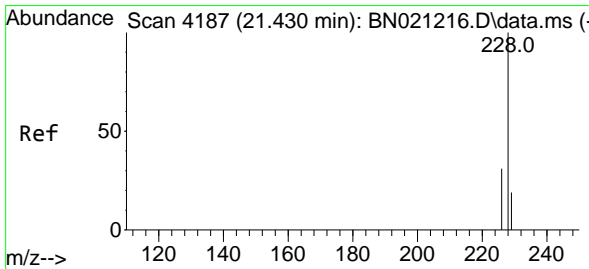
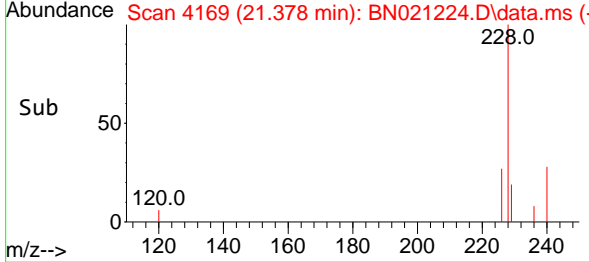
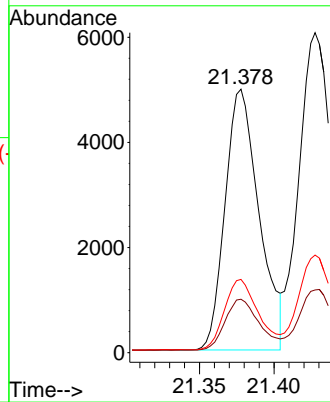


#21  
 Benzo(a)anthracene  
 Concen: 0.329 ng/u1  
 RT: 21.378 min Scan# 4169  
 Delta R.T. -0.002 min  
 Lab File: BN021224.D  
 Acq: 14 Aug 2022 19:16

Instrument : BNA\_N  
 ClientSampleId : SSTD0.4289

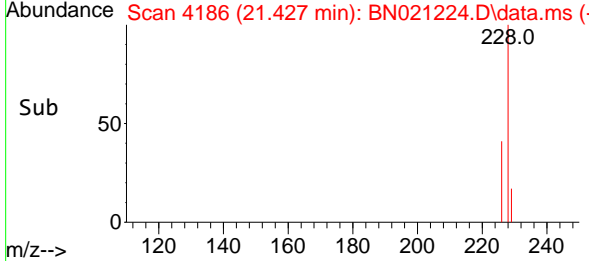
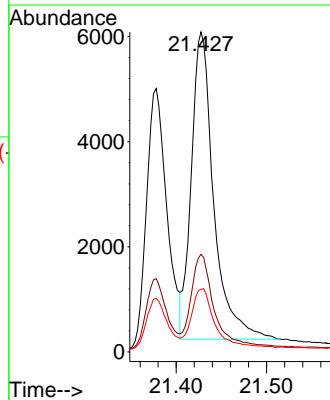
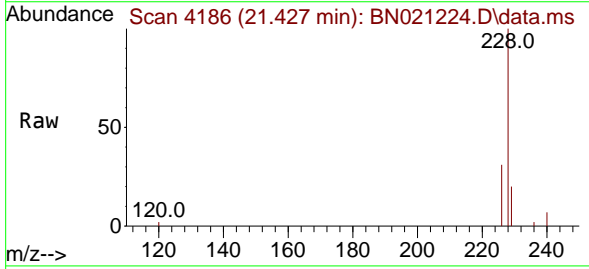


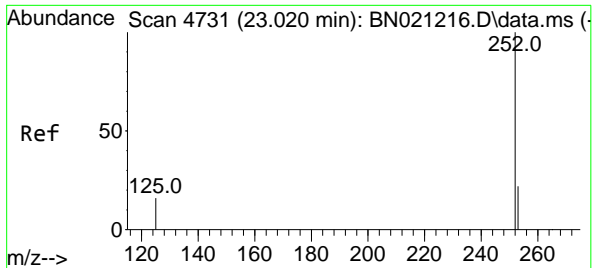
Tgt Ion:228 Resp: 7877  
 Ion Ratio Lower Upper  
 228 100  
 229 20.3 16.0 24.0  
 226 27.8 21.9 32.9



#22  
 Chrysene  
 Concen: 0.319 ng/u1  
 RT: 21.427 min Scan# 4186  
 Delta R.T. -0.002 min  
 Lab File: BN021224.D  
 Acq: 14 Aug 2022 19:16

Tgt Ion:228 Resp: 10068  
 Ion Ratio Lower Upper  
 228 100  
 226 30.5 24.6 37.0  
 229 19.6 15.8 23.8



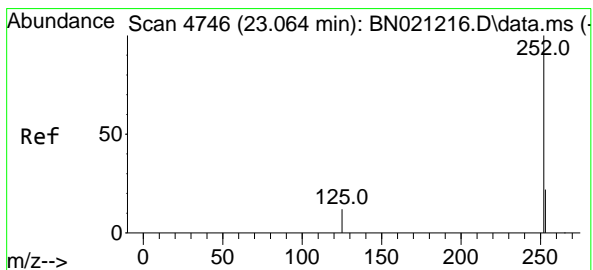
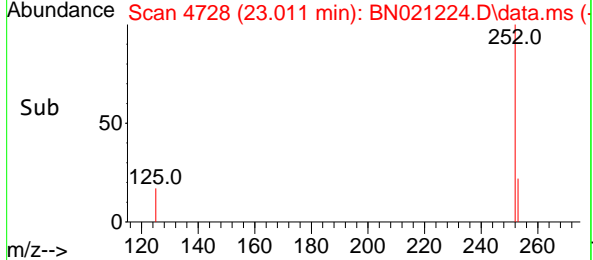
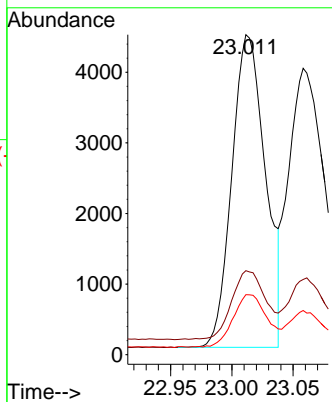
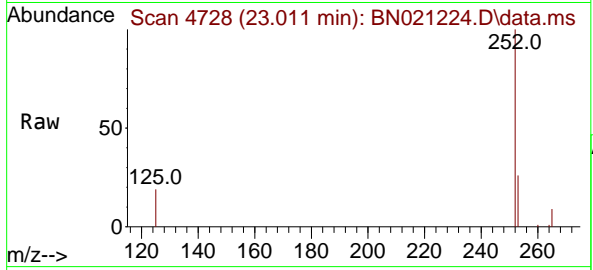


#24  
 Benzo(b)fluoranthene  
 Concen: 0.323 ng/u1  
 RT: 23.011 min Scan# 4728  
 Delta R.T. -0.005 min  
 Lab File: BN021224.D  
 Acq: 14 Aug 2022 19:16

Instrument : BNA\_N  
 ClientSampleId : SSTD0.4289

Tgt Ion:252 Resp: 8447

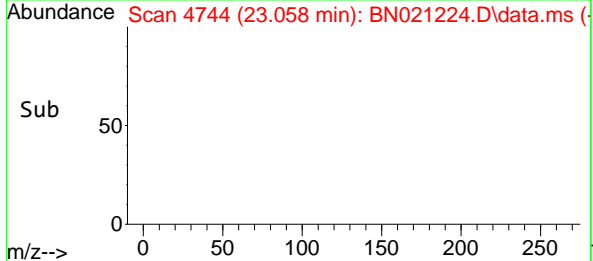
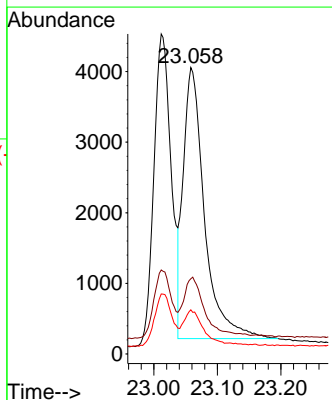
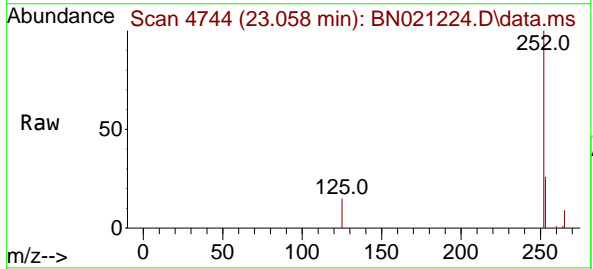
| Ion | Ratio | Lower | Upper |
|-----|-------|-------|-------|
| 252 | 100   |       |       |
| 253 | 26.3  | 0.0   | 50.8  |
| 125 | 18.8  | 0.0   | 30.0  |

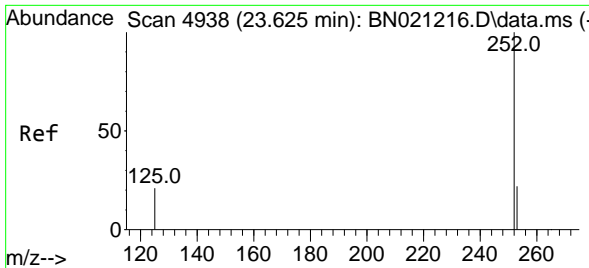


#25  
 Benzo(k)fluoranthene  
 Concen: 0.323 ng/u1  
 RT: 23.058 min Scan# 4744  
 Delta R.T. -0.005 min  
 Lab File: BN021224.D  
 Acq: 14 Aug 2022 19:16

Tgt Ion:252 Resp: 8909

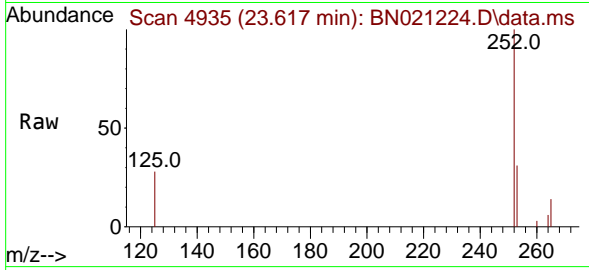
| Ion | Ratio | Lower | Upper |
|-----|-------|-------|-------|
| 252 | 100   |       |       |
| 253 | 26.3  | 20.6  | 31.0  |
| 125 | 15.4  | 11.8  | 17.6  |



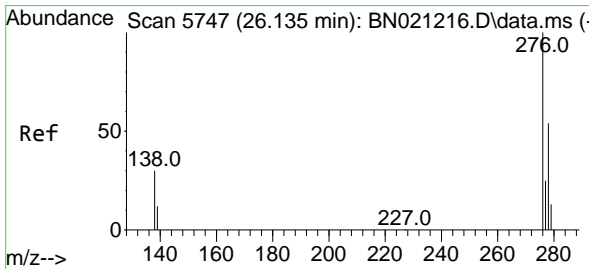
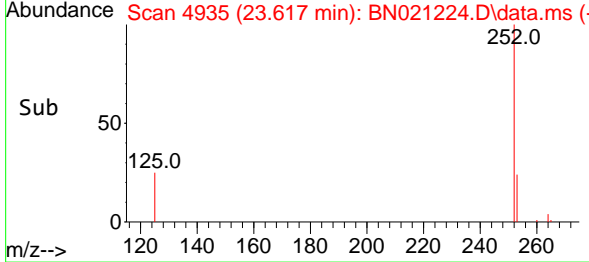
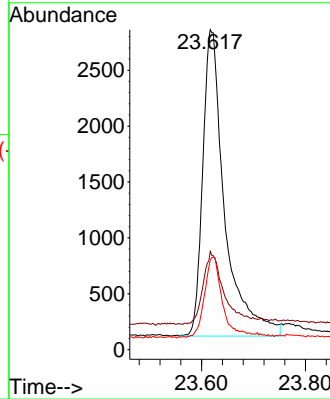


#26  
 Benzo(a)pyrene  
 Concen: 0.339 ng/u1  
 RT: 23.617 min Scan# 4935  
 Delta R.T. -0.005 min  
 Lab File: BN021224.D  
 Acq: 14 Aug 2022 19:16

Instrument :  
 BNA\_N  
 ClientSampleId :  
 SST0.4289

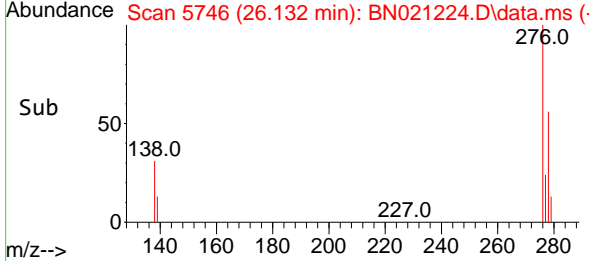
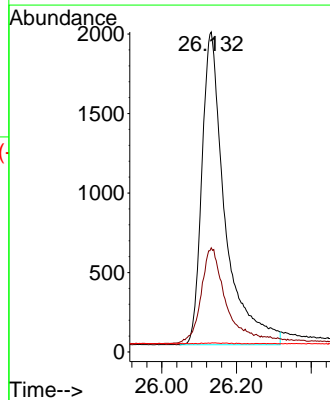
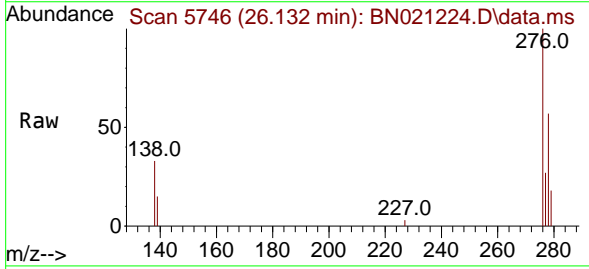


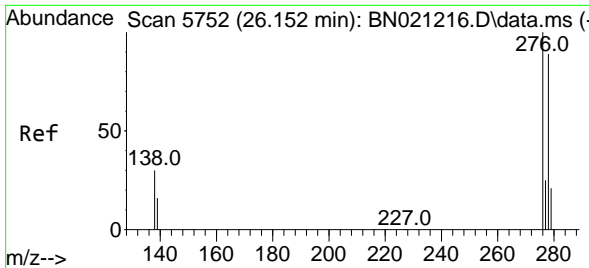
Tgt Ion:252 Resp: 8071  
 Ion Ratio Lower Upper  
 252 100  
 253 30.7 22.1 33.1  
 125 28.0 14.7 22.1#



#27  
 Indeno(1,2,3-cd)pyrene  
 Concen: 0.298 ng/u1  
 RT: 26.132 min Scan# 5746  
 Delta R.T. -0.003 min  
 Lab File: BN021224.D  
 Acq: 14 Aug 2022 19:16

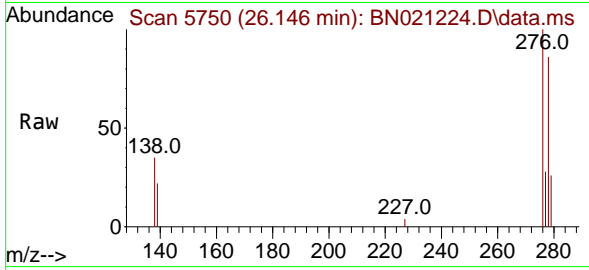
Tgt Ion:276 Resp: 8471  
 Ion Ratio Lower Upper  
 276 100  
 138 33.8 26.1 39.1  
 227 0.1 0.1 0.1



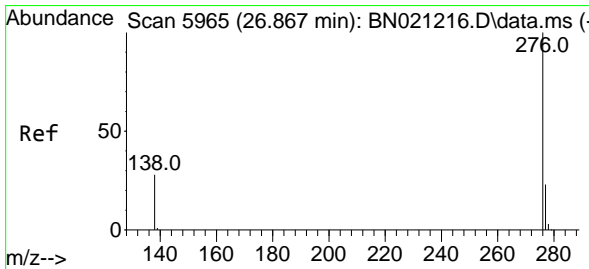
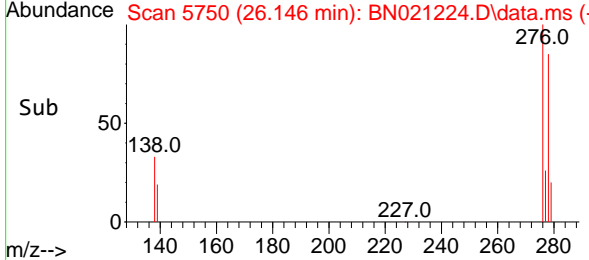
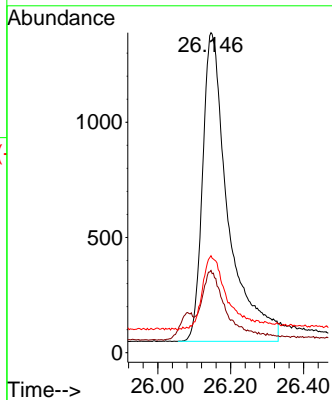


#28  
 Dibenzo(a,h)anthracene  
 Concen: 0.290 ng/ul  
 RT: 26.146 min Scan# 5750  
 Delta R.T. -0.003 min  
 Lab File: BN021224.D  
 Acq: 14 Aug 2022 19:16

Instrument :  
 BNA\_N  
 ClientSampleId :  
 SSTD0.4289



Tgt Ion:278 Resp: 6516  
 Ion Ratio Lower Upper  
 278 100  
 139 25.7 18.3 27.5  
 279 30.3 23.9 35.9



#29  
 Benzo(g,h,i)perylene  
 Concen: 0.306 ng/ul  
 RT: 26.863 min Scan# 5964  
 Delta R.T. -0.006 min  
 Lab File: BN021224.D  
 Acq: 14 Aug 2022 19:16

Tgt Ion:276 Resp: 7762  
 Ion Ratio Lower Upper  
 276 100  
 138 29.5 22.6 34.0  
 277 25.6 20.2 30.2

