

Data Path : Z:\SVOASRV\HPCHEM1\BNA N\DATA\BN081718\  
 Data File : BN002408.D  
 Acq On : 18 Aug 2018 08:40  
 Operator : JU/SJ  
 Sample : J4491-01  
 Misc :  
 ALS Vial : 40 Sample Multiplier: 1

Instrument :  
 BNA\_N  
 ClientSampleId :  
 C0354

Integration Parameters: LSCINT.P

Integrator: RTE  
 Smoothing : OFF Filtering: 5  
 Sampling : 1 Min Area: 1 % of largest Peak  
 Start Thrs: 0.2 Max Peaks: 100  
 Stop Thrs : 0 Peak Location: TOP

If leading or trailing edge < 100 prefer < Baseline drop else tangent >  
 Peak separation: 5

Method : Z:\SVOASRV\HPCHEM1\BNA\_N\METHODS\SOM-EPA-BN081318MA.M  
 Title : SVOA CALIBRATION

Signal : TIC

peak #	R.T. min	first scan	max scan	last scan	PK TY	peak height	corr. area	corr. % max.	% of total
1	4.840	311	315	325	rVB	178028	264238	3.55%	0.467%
2	6.857	652	658	669	rVB	237875	397284	5.34%	0.702%
3	7.016	679	685	697	rVB	698599	1100052	14.79%	1.944%
4	7.210	712	718	734	rVB	799107	1303113	17.52%	2.303%
5	7.675	791	797	809	rVB	556566	906339	12.18%	1.602%
6	8.375	911	916	931	rBV	670976	1134007	15.24%	2.004%
7	8.822	985	992	1004	rBV	959974	1606146	21.59%	2.839%
8	9.540	1107	1114	1125	rBV	785035	1311508	17.63%	2.318%
9	10.075	1198	1205	1226	rBV	1092992	1974102	26.54%	3.489%
10	10.445	1261	1268	1277	rBV	859142	1433019	19.26%	2.533%
11	13.722	1818	1825	1839	rBV	2283021	3273743	44.01%	5.787%
12	13.998	1861	1872	1885	rBV	2665806	3957495	53.20%	6.995%
13	14.304	1918	1924	1935	rBV2	1354543	2069042	27.81%	3.657%
14	14.522	1956	1961	1981	rBV	155401	325341	4.37%	0.575%
15	15.304	2087	2094	2104	rBV	3408696	4841138	65.08%	8.557%
16	15.433	2110	2116	2130	rBV	1172143	1647622	22.15%	2.912%
17	16.010	2208	2214	2223	rVB	50695	74803	1.01%	0.132%
18	17.051	2385	2391	2398	rBV2	1831634	2572363	34.58%	4.547%
19	17.151	2402	2408	2422	rVV	3741535	5414396	72.79%	9.571%
20	17.957	2541	2545	2554	rBV3	55751	81320	1.09%	0.144%
21	19.451	2793	2799	2807	rBV	4558505	6460807	86.85%	11.420%
22	21.251	3099	3105	3115	rBV2	2551431	3294215	44.28%	5.823%
23	23.333	3451	3459	3469	rBV2	4012234	7438809	100.00%	13.149%
24	23.468	3475	3482	3498	rVB2	1798402	3456486	46.47%	6.110%
25	23.998	3567	3572	3577	rVB2	64264	109760	1.48%	0.194%
26	24.727	3692	3696	3704	rVB2	66004	126583	1.70%	0.224%

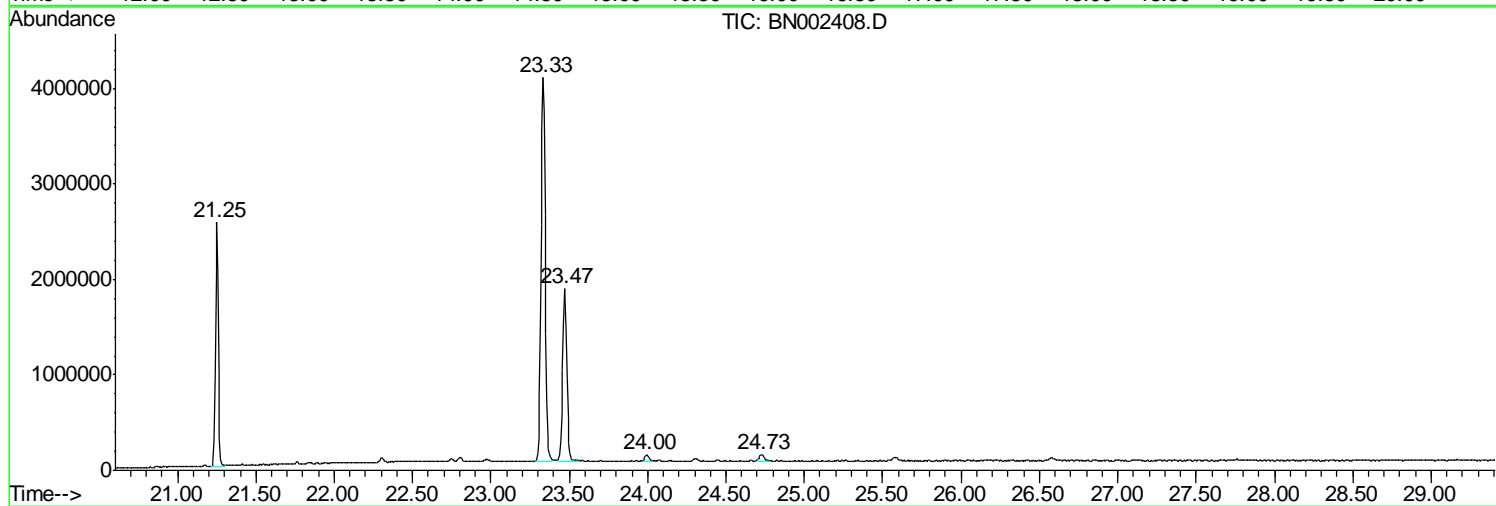
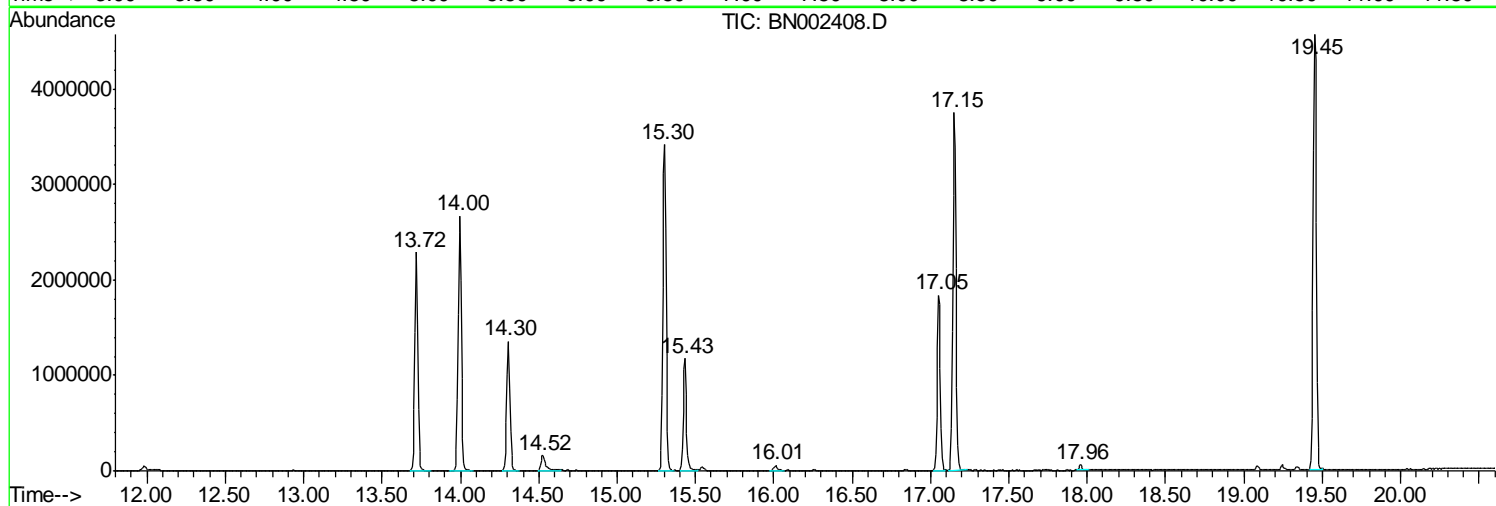
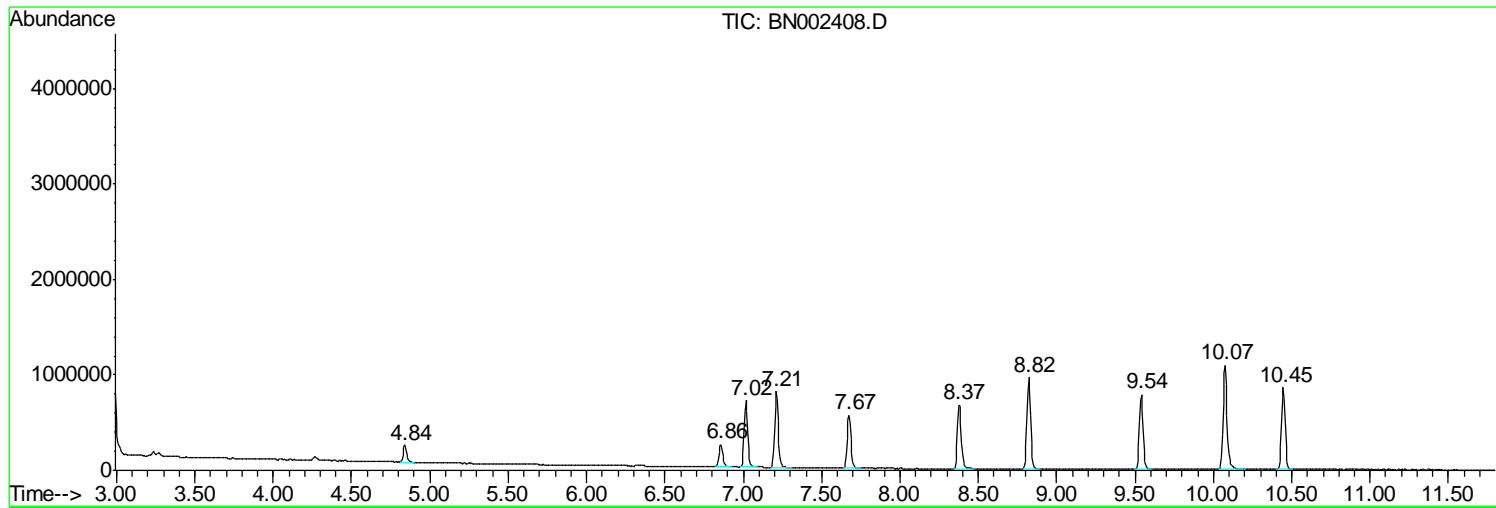
Sum of corrected areas: 56573731

Data Path : Z:\SVOASRV\HPCHEM1\BNA\_N\DATA\BN081718\  
Data File : BN002408.D  
Acq On : 18 Aug 2018 08:40  
Operator : JU/SJ  
Sample : J4491-01  
Misc :  
ALS Vial : 40 Sample Multiplier: 1

Instrument :  
BNA\_N  
ClientSampleId :  
C0354

Quant Method : Z:\SVOASRV\HPCHEM1\BNA\_N\METHODS\SOM-EPA-BN081318MA.M  
Quant Title : SVOA CALIBRATION

TIC Library : C:\Database\NIST11.L  
TIC Integration Parameters: LSCINT.P



Data Path : Z:\SVOASRV\HPCHEM1\BNA N\DATA\BN081718\  
 Data File : BN002408.D  
 Acq On : 18 Aug 2018 08:40  
 Operator : JU/SJ  
 Sample : J4491-01  
 Misc :  
 ALS Vial : 40 Sample Multiplier: 1

Instrument :  
 BNA\_N  
 ClientSampled :  
 C0354

Quant Method : Z:\SVOASRV\HPCHEM1\BNA\_N\METHODS\SOM-EPA-BN081318MA.M  
 Quant Title : SVOA CALIBRATION

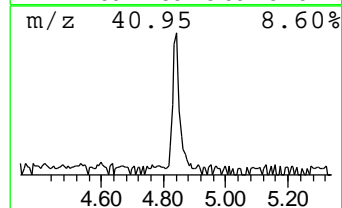
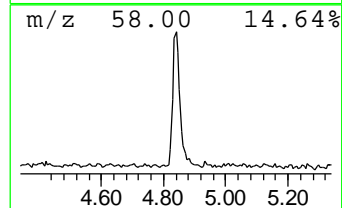
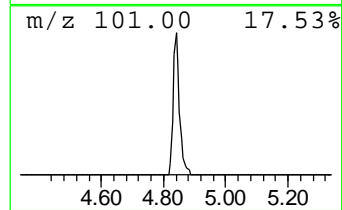
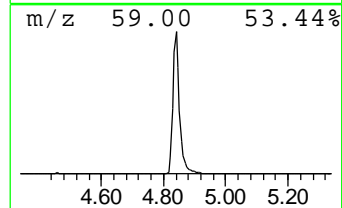
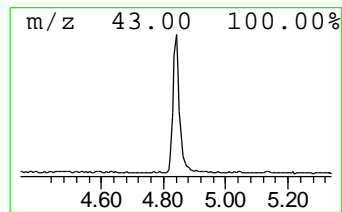
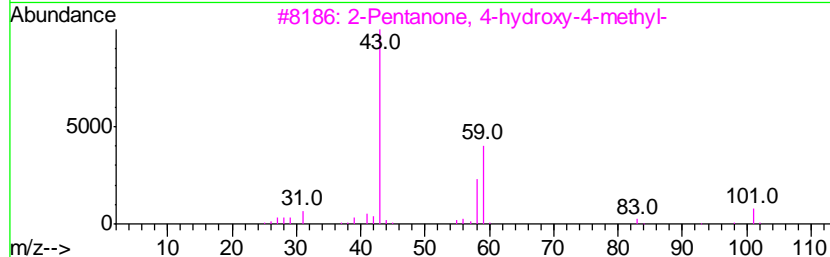
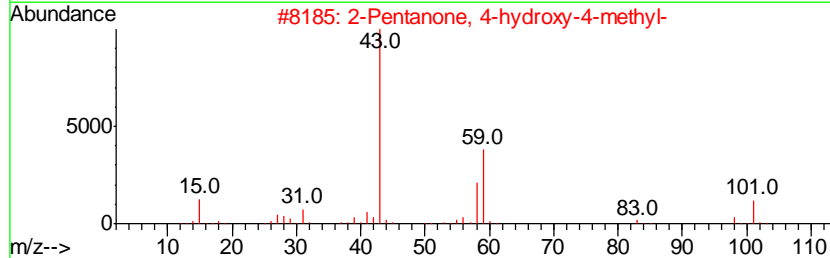
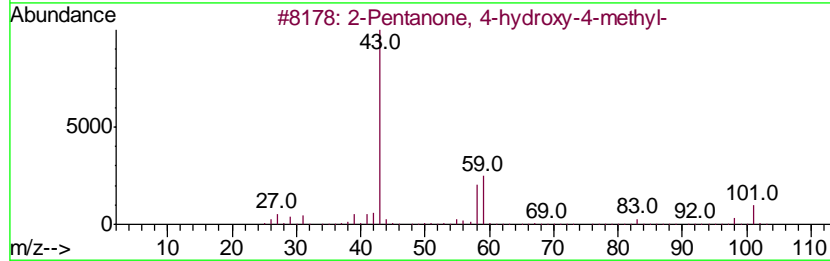
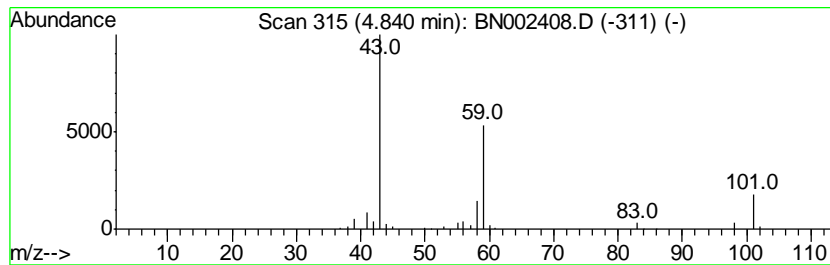
TIC Library : C:\Database\NIST11.L  
 TIC Integration Parameters: LSCINT.P

\*\*\*\*\*  
 Peak Number 1 2-Pentanone, 4-hydroxy-4-me... Concentration Rank 1

R.T.	EstConc	Area	Relative to ISTD	R.T.
4.84	5.83 ng/ul	264238	1,4-Dichlorobenzene-d4	7.67

Hit#	of	Tentative ID	MW	MolForm	CAS#	Qual
1	5	2-Pentanone, 4-hydroxy-4-methyl-	116	C6H12O2	000123-42-2	59
2		2-Pentanone, 4-hydroxy-4-methyl-	116	C6H12O2	000123-42-2	59
3		2-Pentanone, 4-hydroxy-4-methyl-	116	C6H12O2	000123-42-2	45
4		2-Hexanol, 2-methyl-	116	C7H16O	000625-23-0	33
5		2-Pentanone, 4-hydroxy-4-methyl-	116	C6H12O2	000123-42-2	28



Data Path : Z:\SVOASRV\HPCHEM1\BNA\_N\DATA\BN081718\  
Data File : BN002408.D  
Acq On : 18 Aug 2018 08:40  
Operator : JU/SJ  
Sample : J4491-01  
Misc :  
ALS Vial : 40 Sample Multiplier: 1

Instrument :  
BNA\_N  
ClientSampleId :  
C0354

Quant Method : Z:\SVOASRV\HPCHEM1\BNA\_N\METHODS\SOM-EPA-BN081318MA.M  
Quant Title : SVOA CALIBRATION

TIC Library : C:\Database\NIST11.L  
TIC Integration Parameters: LSCINT.P

TIC Top Hit name	RT	EstConc	Units	Response	--Internal Standard--			
					#	RT	Resp	Conc
2-Pentanone, 4-hy...	4.84	5.8	ng/ul	264238	1	7.67	906339	20.0