

Data Path : Z:\svoasrv\HPCHEM1\BNA_N\Data\BN081925\
 Data File : BN037610.D
 Acq On : 19 Aug 2025 16:42
 Operator : RC/JU
 Sample : Q2869-04
 Misc :
 ALS Vial : 12 Sample Multiplier: 1

Instrument :
 BNA_N
 ClientSampleId :
 MW-11A-13.5-081325

Quant Time: Aug 20 01:27:29 2025
 Quant Method : Z:\svoasrv\HPCHEM1\BNA_N\Methods\8270-SIM-BN081225.M
 Quant Title : ASP BNA STANDARDS FOR 5 POINT CALIBRATION
 QLast Update : Wed Aug 13 05:00:58 2025
 Response via : Initial Calibration

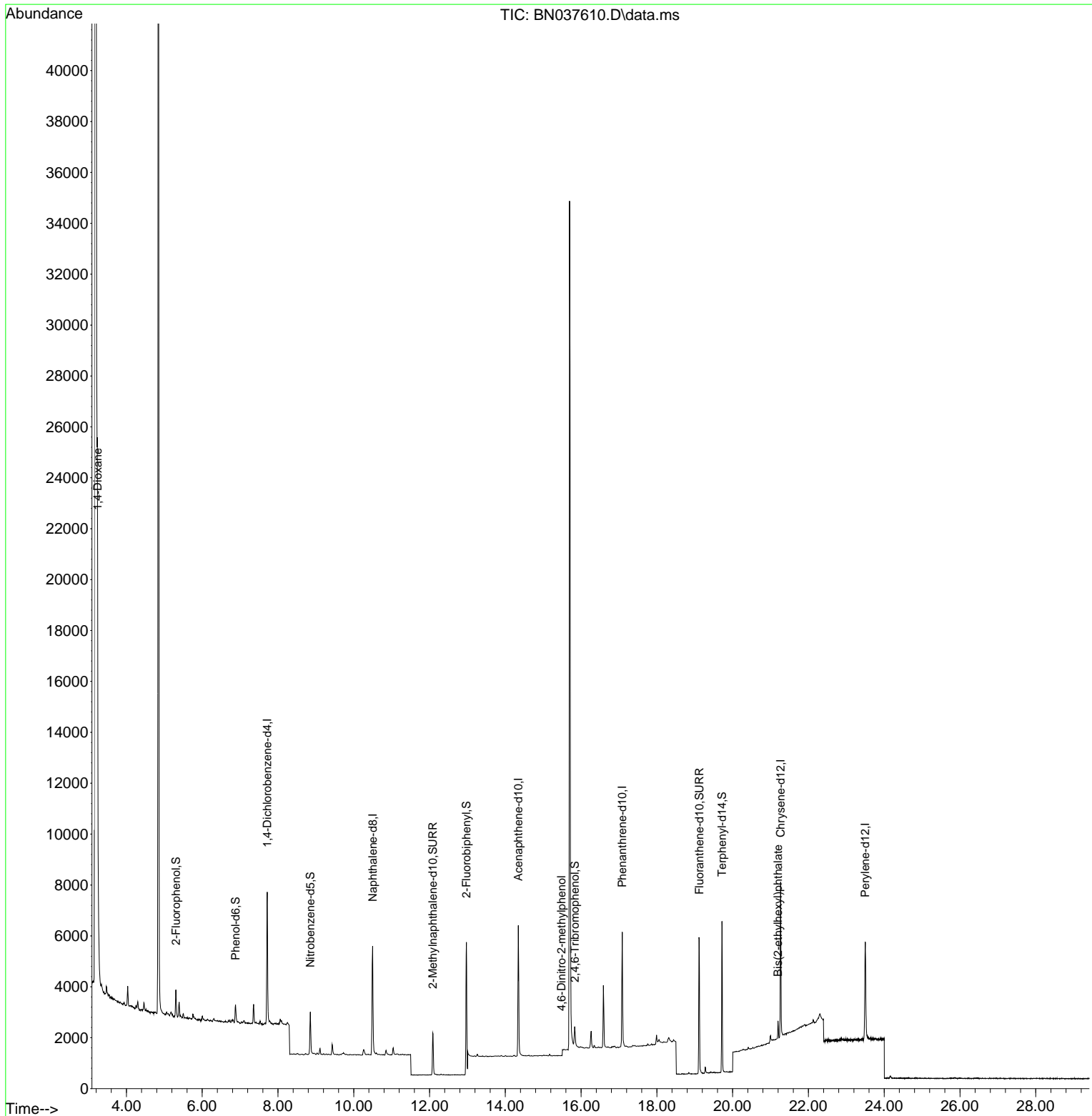
Compound	R.T.	QIon	Response	Conc	Units	Dev(Min)	
Internal Standards							
1) 1,4-Dichlorobenzene-d4	7.717	152	2495	0.400	ng	0.00	
7) Naphthalene-d8	10.498	136	6050	0.400	ng	0.00	
13) Acenaphthene-d10	14.345	164	2961	0.400	ng	0.00	
19) Phenanthrene-d10	17.087	188	6177	0.400	ng	0.00	
29) Chrysene-d12	21.268	240	5539	0.400	ng	0.00	#
35) Perylene-d12	23.499	264	5233	0.400	ng	0.00	
System Monitoring Compounds							
4) 2-Fluorophenol	5.305	112	830	0.147	ng	0.00	
5) Phenol-d6	6.880	99	585	0.086	ng	0.00	
8) Nitrobenzene-d5	8.854	82	1383	0.325	ng	0.00	
11) 2-Methylnaphthalene-d10	12.086	152	2376	0.289	ng	0.00	
14) 2,4,6-Tribromophenol	15.833	330	497	0.384	ng	0.00	
15) 2-Fluorobiphenyl	12.973	172	6938	0.405	ng	0.00	
27) Fluoranthene-d10	19.118	212	6064	0.373	ng	0.00	
31) Terphenyl-d14	19.717	244	5707	0.501	ng	0.00	
Target Compounds							
2) 1,4-Dioxane	3.240	88	5375	2.252	ng	97	
20) 4,6-Dinitro-2-methylph...	15.478	198	8	0.188	ng	1	#
34) Bis(2-ethylhexyl)phtha...	21.196	149	628	0.082	ng	96	#

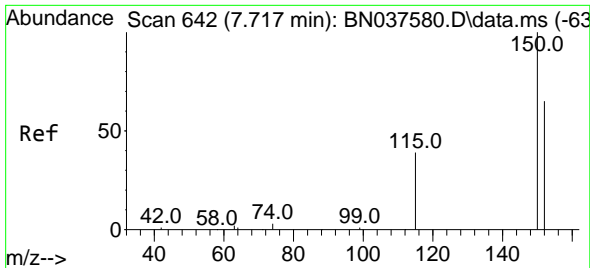
(#) = qualifier out of range (m) = manual integration (+) = signals summed

Data Path : Z:\svoasrv\HPCHEM1\BNA_N\Data\BN081925\
 Data File : BN037610.D
 Acq On : 19 Aug 2025 16:42
 Operator : RC/JU
 Sample : Q2869-04
 Misc :
 ALS Vial : 12 Sample Multiplier: 1

Instrument :
 BNA_N
 ClientSampleId :
 MW-11A-13.5-081325

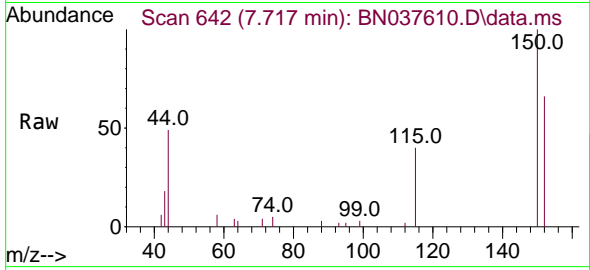
Quant Time: Aug 20 01:27:29 2025
 Quant Method : Z:\svoasrv\HPCHEM1\BNA_N\Methods\8270-SIM-BN081225.M
 Quant Title : ASP BNA STANDARDS FOR 5 POINT CALIBRATION
 QLast Update : Wed Aug 13 05:00:58 2025
 Response via : Initial Calibration



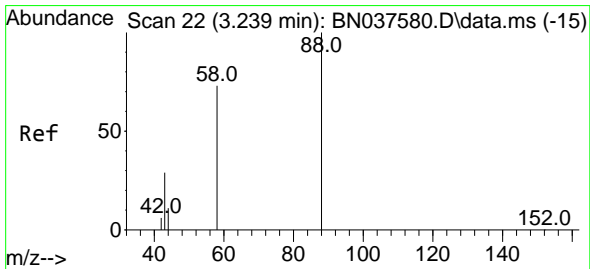
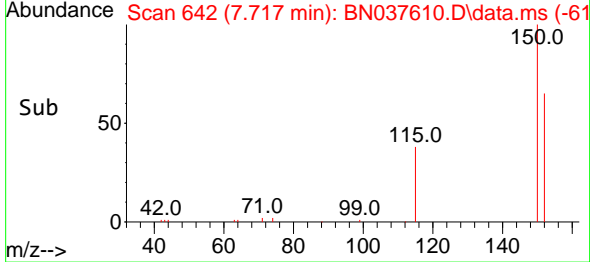
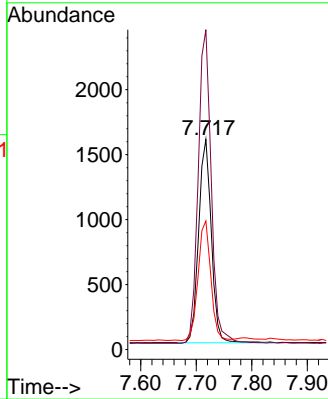


#1
 1,4-Dichlorobenzene-d4
 Concen: 0.400 ng
 RT: 7.717 min Scan# 64
 Delta R.T. 0.000 min
 Lab File: BN037610.D
 Acq: 19 Aug 2025 16:42

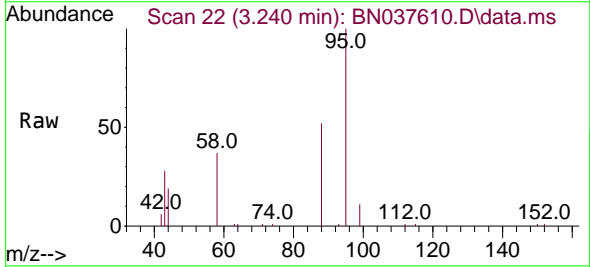
Instrument :
 BNA_N
 ClientSampleId :
 MW-11A-13.5-081325



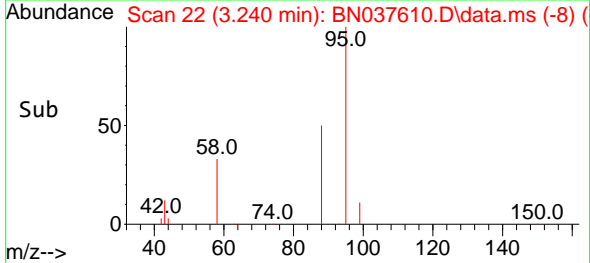
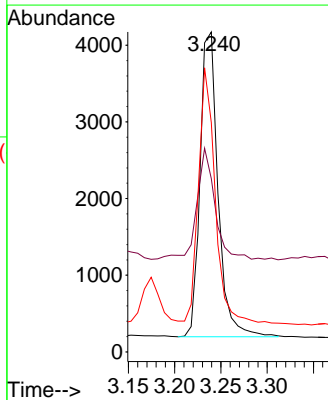
Tgt Ion:152 Resp: 2495
 Ion Ratio Lower Upper
 152 100
 150 152.2 122.2 183.4
 115 61.2 49.8 74.6

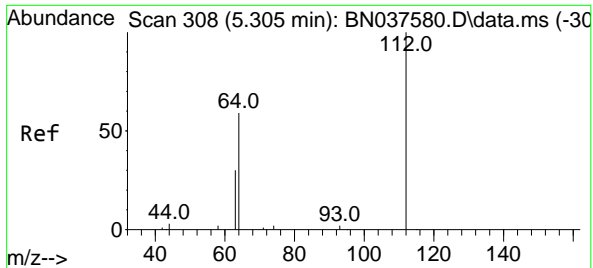


#2
 1,4-Dioxane
 Concen: 2.252 ng
 RT: 3.240 min Scan# 22
 Delta R.T. 0.000 min
 Lab File: BN037610.D
 Acq: 19 Aug 2025 16:42



Tgt Ion: 88 Resp: 5375
 Ion Ratio Lower Upper
 88 100
 43 37.3 25.8 38.6
 58 77.5 61.2 91.8

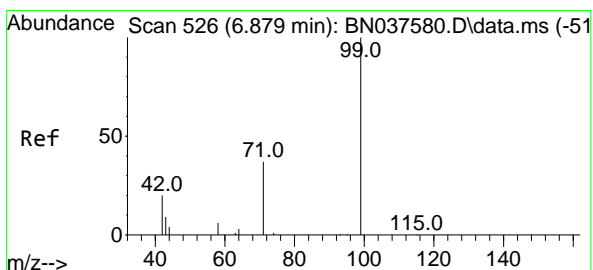
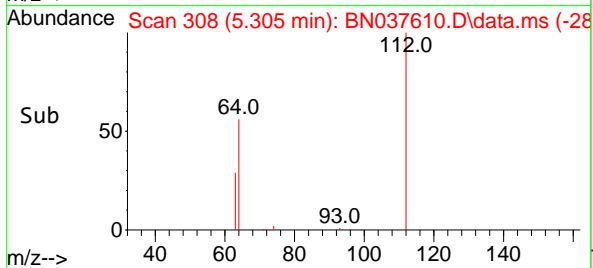
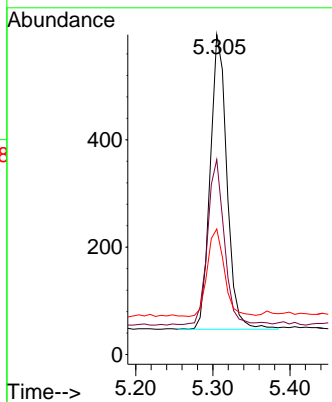
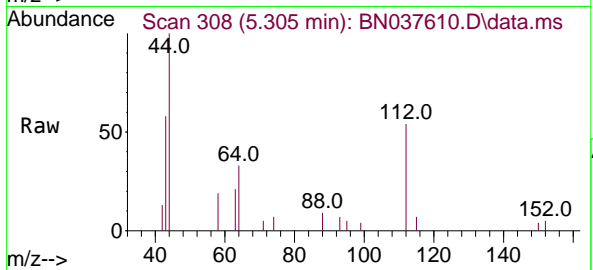




#4
 2-Fluorophenol
 Concen: 0.147 ng
 RT: 5.305 min Scan# 308
 Delta R.T. 0.000 min
 Lab File: BN037610.D
 Acq: 19 Aug 2025 16:42

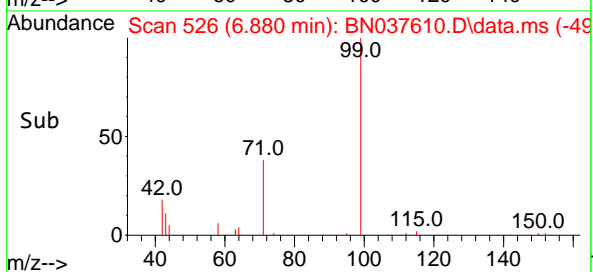
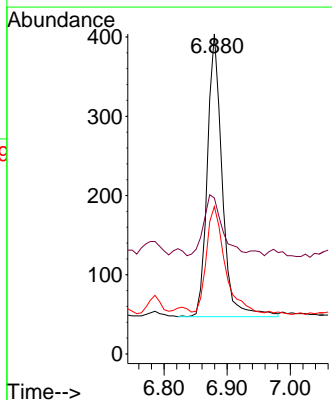
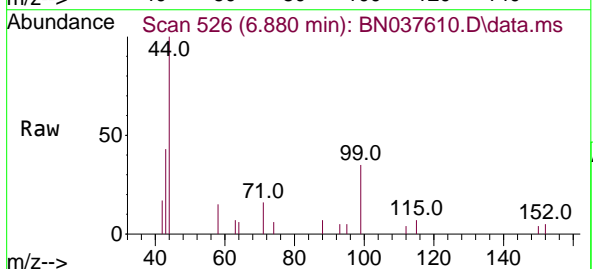
Instrument : BNA_N
 ClientSampleId : MW-11A-13.5-081325

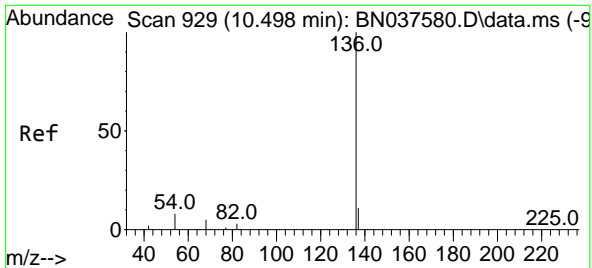
Tgt Ion	Resp	Lower	Upper
112	100		
64	56.7	44.9	67.3
63	30.2	23.4	35.2



#5
 Phenol-d6
 Concen: 0.086 ng
 RT: 6.880 min Scan# 526
 Delta R.T. 0.000 min
 Lab File: BN037610.D
 Acq: 19 Aug 2025 16:42

Tgt Ion	Resp	Lower	Upper
99	100		
42	26.7	18.5	27.7
71	46.0	28.6	42.8



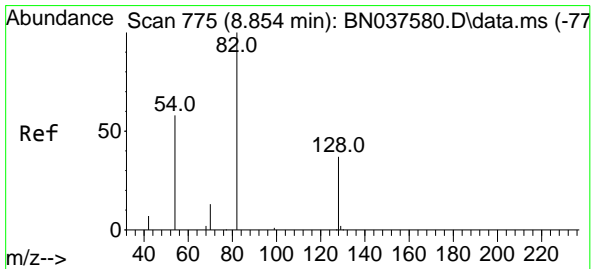
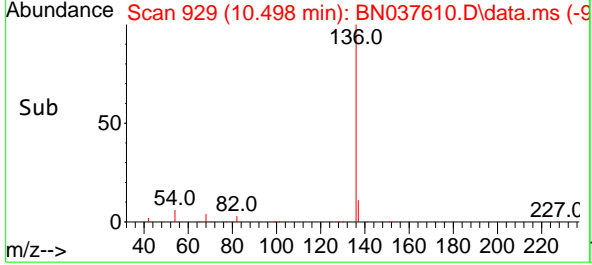
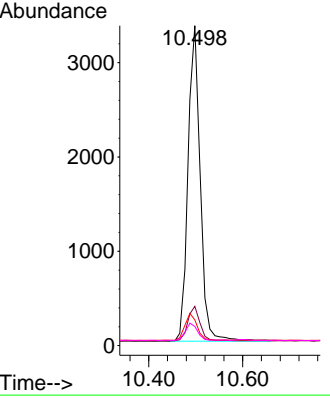
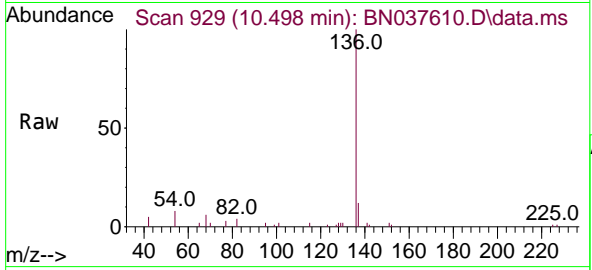


#7
 Naphthalene-d8
 Concen: 0.400 ng
 RT: 10.498 min Scan# 911
 Delta R.T. 0.000 min
 Lab File: BN037610.D
 Acq: 19 Aug 2025 16:42

Instrument : BNA_N
 ClientSampleId : MW-11A-13.5-081325

Tgt Ion:136 Resp: 6050

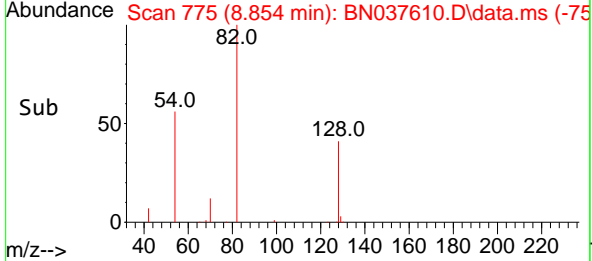
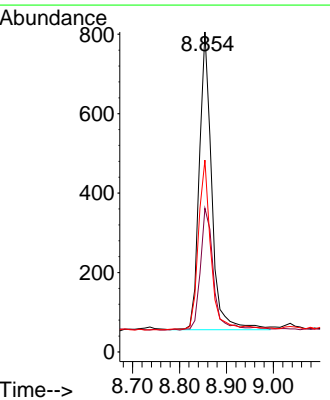
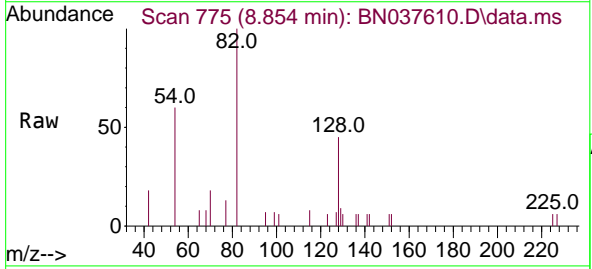
Ion	Ratio	Lower	Upper
136	100		
137	12.3	9.5	14.3
54	8.0	7.3	10.9
68	6.0	5.1	7.7

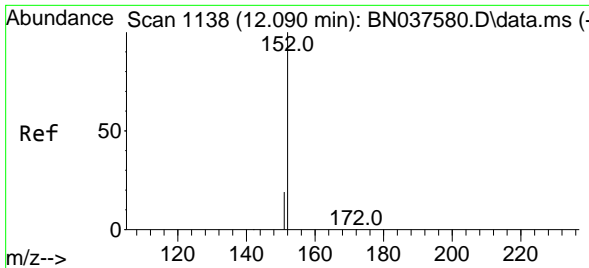


#8
 Nitrobenzene-d5
 Concen: 0.325 ng
 RT: 8.854 min Scan# 775
 Delta R.T. 0.000 min
 Lab File: BN037610.D
 Acq: 19 Aug 2025 16:42

Tgt Ion: 82 Resp: 1383

Ion	Ratio	Lower	Upper
82	100		
128	44.9	32.6	48.8
54	59.9	48.9	73.3

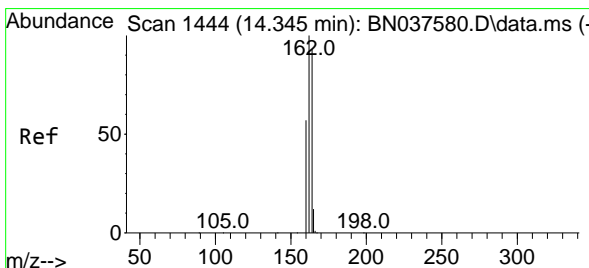
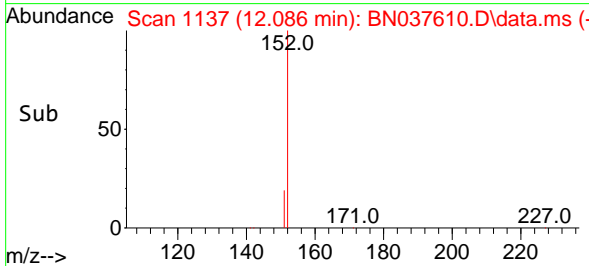
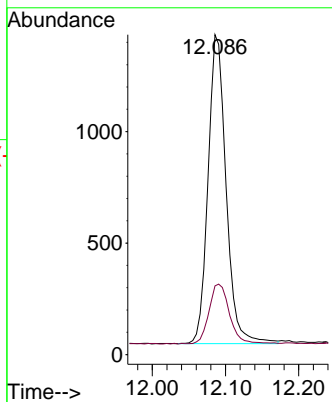
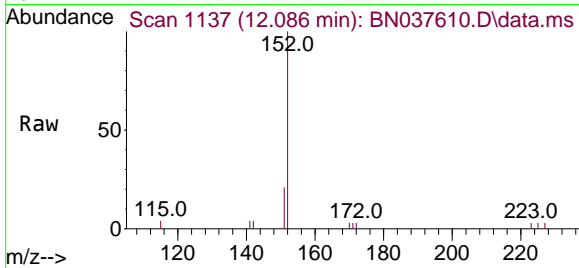




#11
 2-Methylnaphthalene-d10
 Concen: 0.289 ng
 RT: 12.086 min Scan# 1137
 Delta R.T. -0.005 min
 Lab File: BN037610.D
 Acq: 19 Aug 2025 16:42

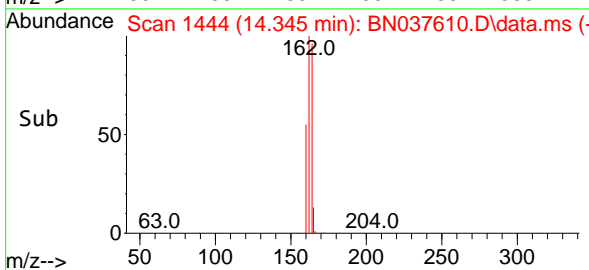
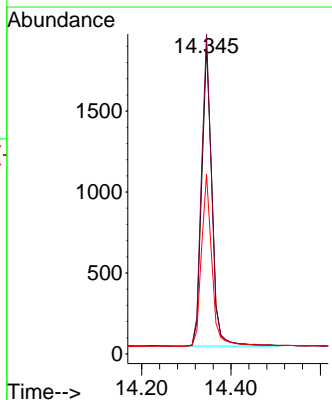
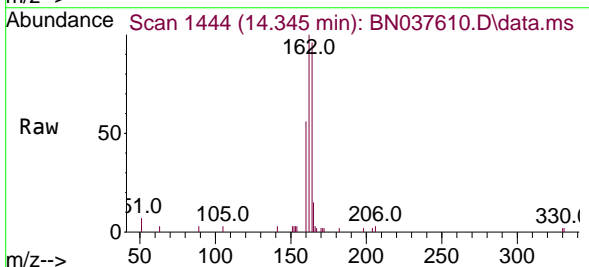
Instrument : BNA_N
 ClientSampleId : MW-11A-13.5-081325

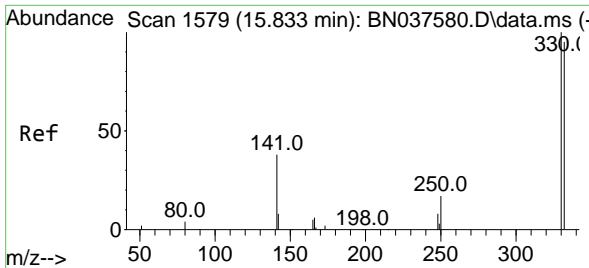
Tgt Ion:152 Resp: 2376
 Ion Ratio Lower Upper
 152 100
 151 21.8 17.3 25.9



#13
 Acenaphthene-d10
 Concen: 0.400 ng
 RT: 14.345 min Scan# 1444
 Delta R.T. 0.000 min
 Lab File: BN037610.D
 Acq: 19 Aug 2025 16:42

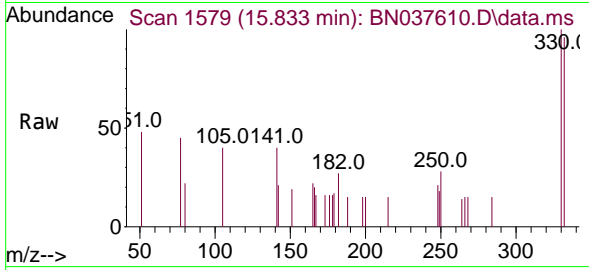
Tgt Ion:164 Resp: 2961
 Ion Ratio Lower Upper
 164 100
 162 103.7 85.5 128.3
 160 58.2 49.5 74.3





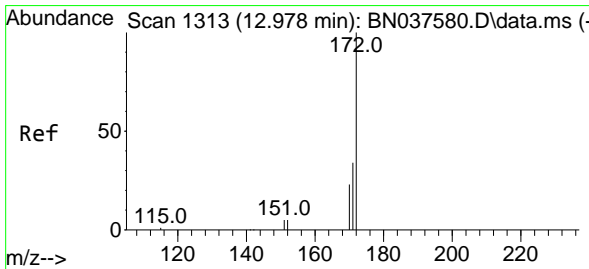
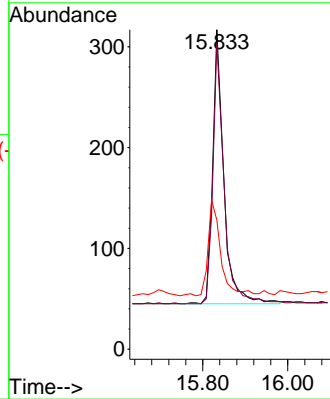
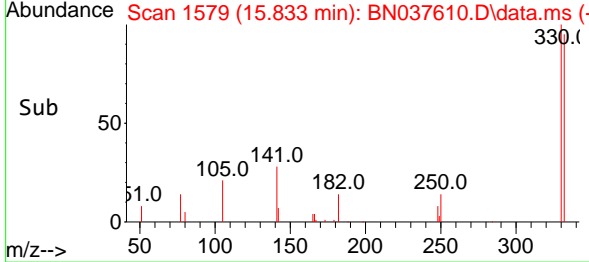
#14
 2,4,6-Tribromophenol
 Concen: 0.384 ng
 RT: 15.833 min Scan# 11
 Delta R.T. 0.000 min
 Lab File: BN037610.D
 Acq: 19 Aug 2025 16:42

Instrument :
 BNA_N
 ClientSampleId :
 MW-11A-13.5-081325

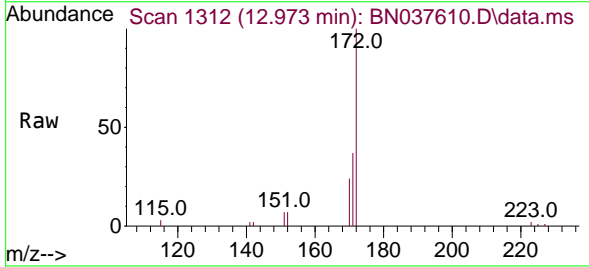


Tgt Ion: 330 Resp: 497

Ion	Ratio	Lower	Upper
330	100		
332	94.6	77.4	116.0
141	39.6	30.9	46.3

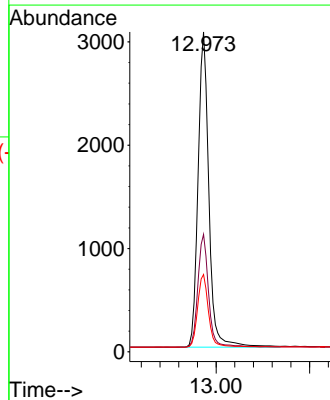
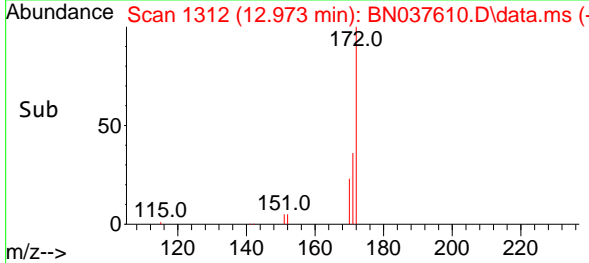


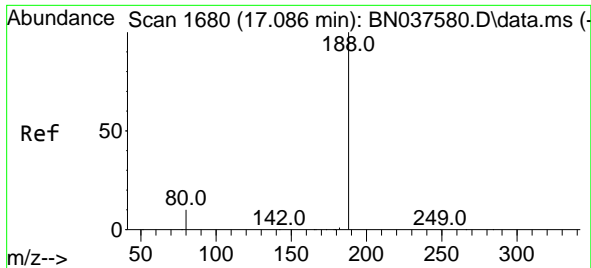
#15
 2-Fluorobiphenyl
 Concen: 0.405 ng
 RT: 12.973 min Scan# 1312
 Delta R.T. -0.005 min
 Lab File: BN037610.D
 Acq: 19 Aug 2025 16:42



Tgt Ion: 172 Resp: 6938

Ion	Ratio	Lower	Upper
172	100		
171	36.7	28.2	42.4
170	24.2	19.2	28.8



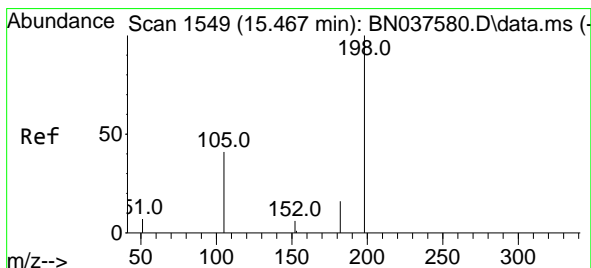
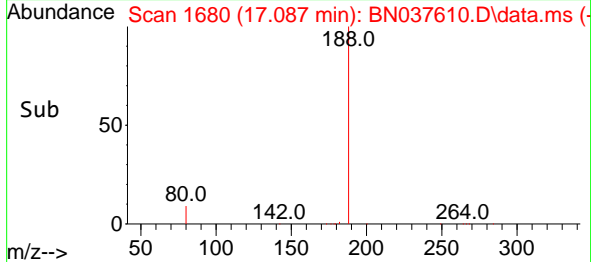
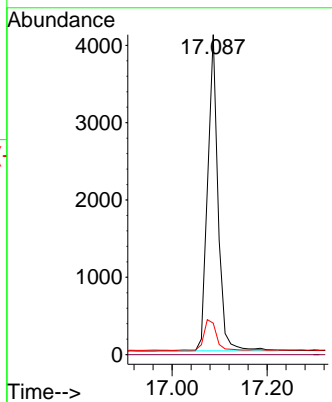
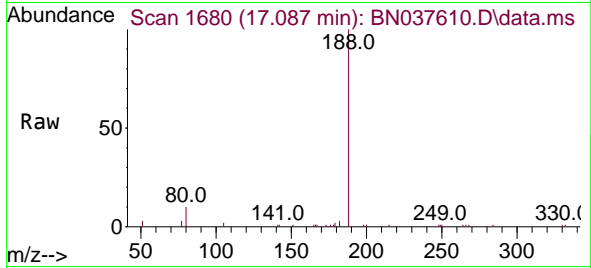


#19
 Phenanthrene-d10
 Concen: 0.400 ng
 RT: 17.087 min Scan# 10
 Delta R.T. 0.000 min
 Lab File: BN037610.D
 Acq: 19 Aug 2025 16:42

Instrument :
 BNA_N
 ClientSampleId :
 MW-11A-13.5-081325

Tgt Ion:188 Resp: 6177

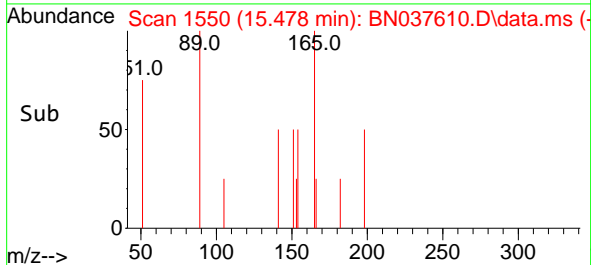
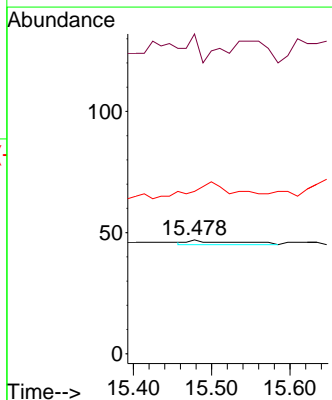
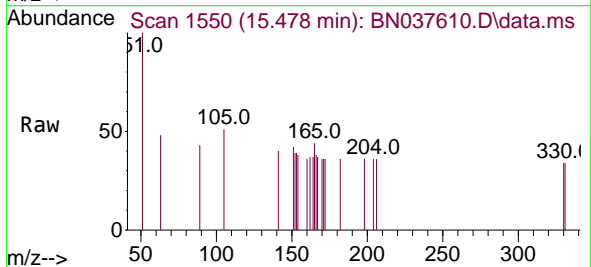
Ion	Ratio	Lower	Upper
188	100		
94	0.0	0.0	0.0
80	9.8	9.1	13.7

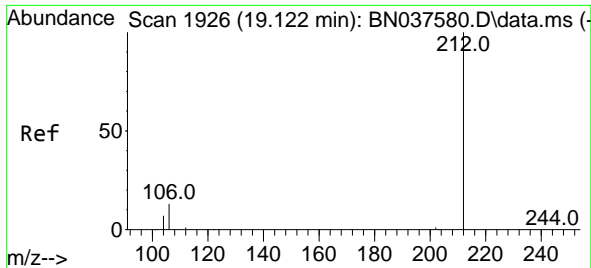


#20
 4,6-Dinitro-2-methylphenol
 Concen: 0.188 ng
 RT: 15.478 min Scan# 1550
 Delta R.T. 0.011 min
 Lab File: BN037610.D
 Acq: 19 Aug 2025 16:42

Tgt Ion:198 Resp: 8

Ion	Ratio	Lower	Upper
198	100		
51	280.9	81.0	121.6#
105	142.6	52.5	78.7#



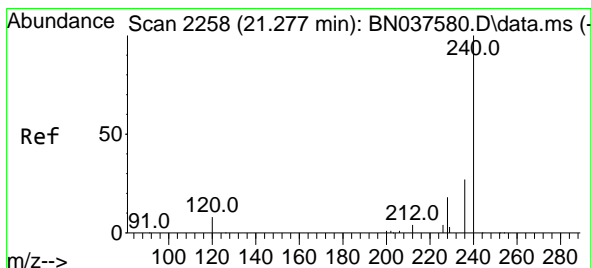
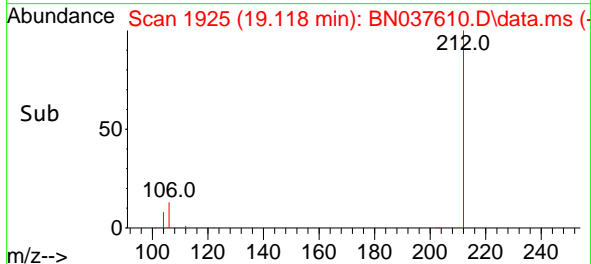
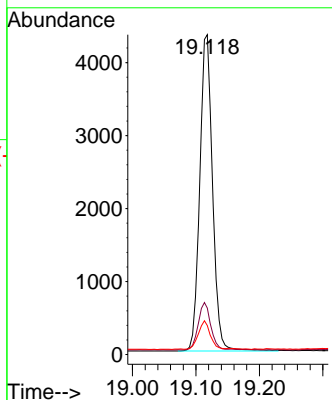
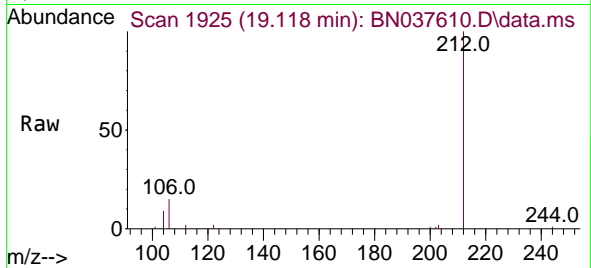


#27
 Fluoranthene-d10
 Concen: 0.373 ng
 RT: 19.118 min Scan# 1925
 Delta R.T. -0.004 min
 Lab File: BN037610.D
 Acq: 19 Aug 2025 16:42

Instrument :
 BNA_N
 ClientSampleId :
 MW-11A-13.5-081325

Tgt Ion:212 Resp: 6064

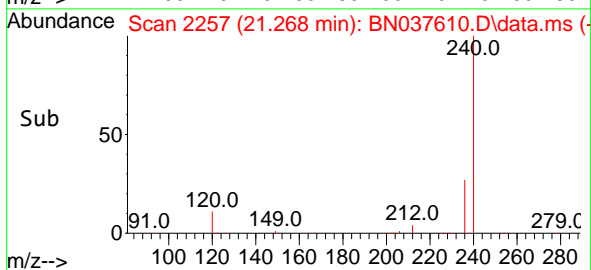
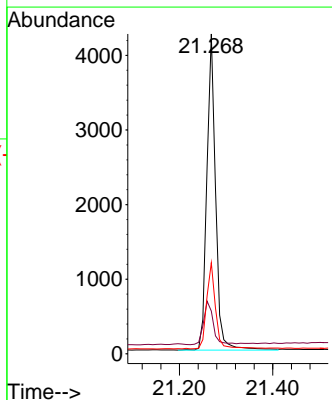
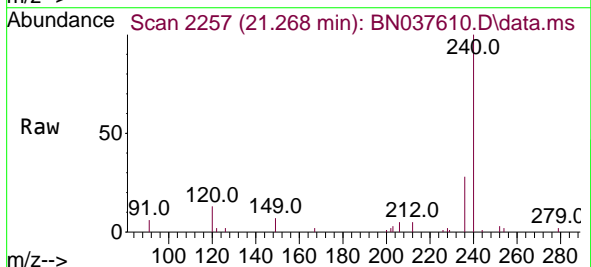
Ion	Ratio	Lower	Upper
212	100		
106	14.7	11.5	17.3
104	8.5	6.6	9.8

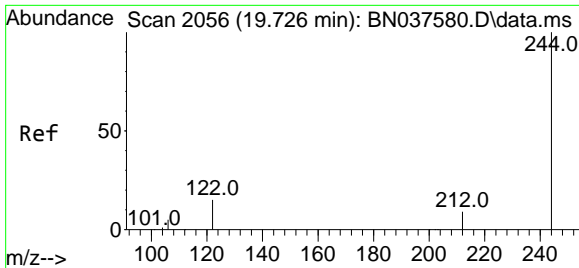


#29
 Chrysene-d12
 Concen: 0.400 ng
 RT: 21.268 min Scan# 2257
 Delta R.T. -0.009 min
 Lab File: BN037610.D
 Acq: 19 Aug 2025 16:42

Tgt Ion:240 Resp: 5539

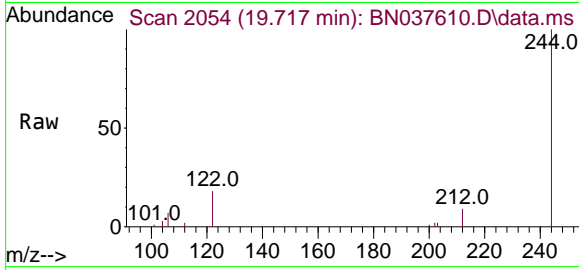
Ion	Ratio	Lower	Upper
240	100		
120	13.4	8.9	13.3
236	28.5	22.6	33.8



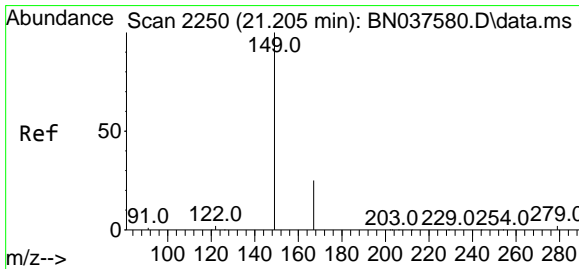
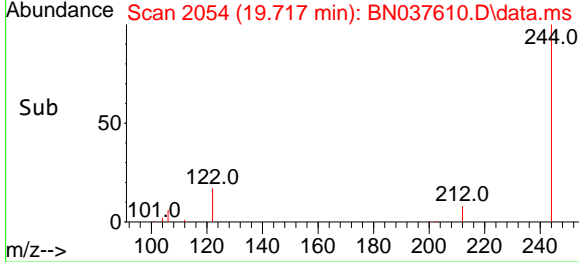
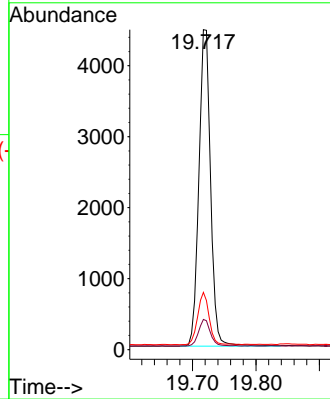


#31
 Terphenyl-d14
 Concen: 0.501 ng
 RT: 19.717 min Scan# 2054
 Delta R.T. -0.009 min
 Lab File: BN037610.D
 Acq: 19 Aug 2025 16:42

Instrument : BNA_N
 ClientSampleId : MW-11A-13.5-081325

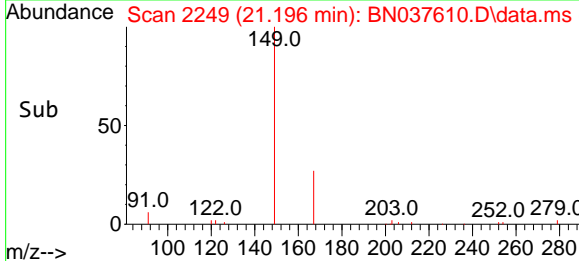
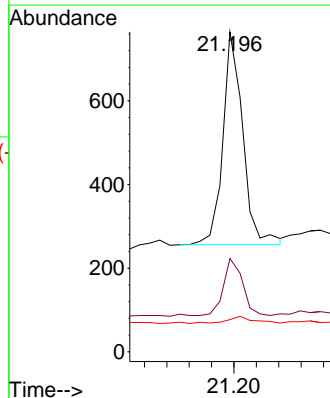
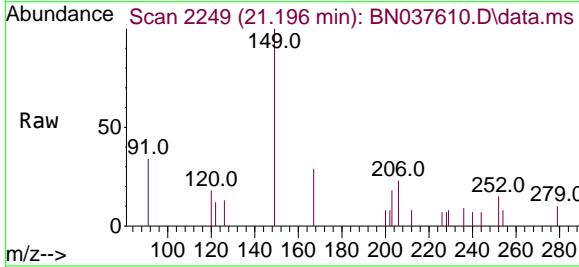


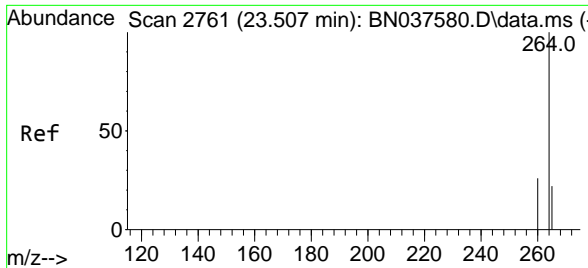
Tgt Ion:244 Resp: 5707
 Ion Ratio Lower Upper
 244 100
 212 9.4 8.2 12.2
 122 17.9 13.2 19.8



#34
 Bis(2-ethylhexyl)phthalate
 Concen: 0.082 ng
 RT: 21.196 min Scan# 2249
 Delta R.T. -0.009 min
 Lab File: BN037610.D
 Acq: 19 Aug 2025 16:42

Tgt Ion:149 Resp: 628
 Ion Ratio Lower Upper
 149 100
 167 27.4 20.5 30.7
 279 4.5 2.6 4.0#





#35
 Perylene-d12
 Concen: 0.400 ng
 RT: 23.499 min Scan# 21
 Delta R.T. -0.008 min
 Lab File: BN037610.D
 Acq: 19 Aug 2025 16:42

Instrument :
 BNA_N
 ClientSampleId :
 MW-11A-13.5-081325

Tgt Ion:264 Resp: 5233

Ion	Ratio	Lower	Upper
264	100		
260	26.9	21.6	32.4
265	62.2	48.2	72.4

