

Data Path : Z:\svoasrv\HPCHEM1\BNA\_N\Data\BN081925\  
 Data File : BN037613.D  
 Acq On : 19 Aug 2025 18:30  
 Operator : RC/JU  
 Sample : Q2869-10  
 Misc :  
 ALS Vial : 15 Sample Multiplier: 1

Instrument :  
 BNA\_N  
 ClientSampleId :  
 EB02-081325

Quant Time: Aug 20 01:28:26 2025  
 Quant Method : Z:\svoasrv\HPCHEM1\BNA\_N\Methods\8270-SIM-BN081225.M  
 Quant Title : ASP BNA STANDARDS FOR 5 POINT CALIBRATION  
 QLast Update : Wed Aug 13 05:00:58 2025  
 Response via : Initial Calibration

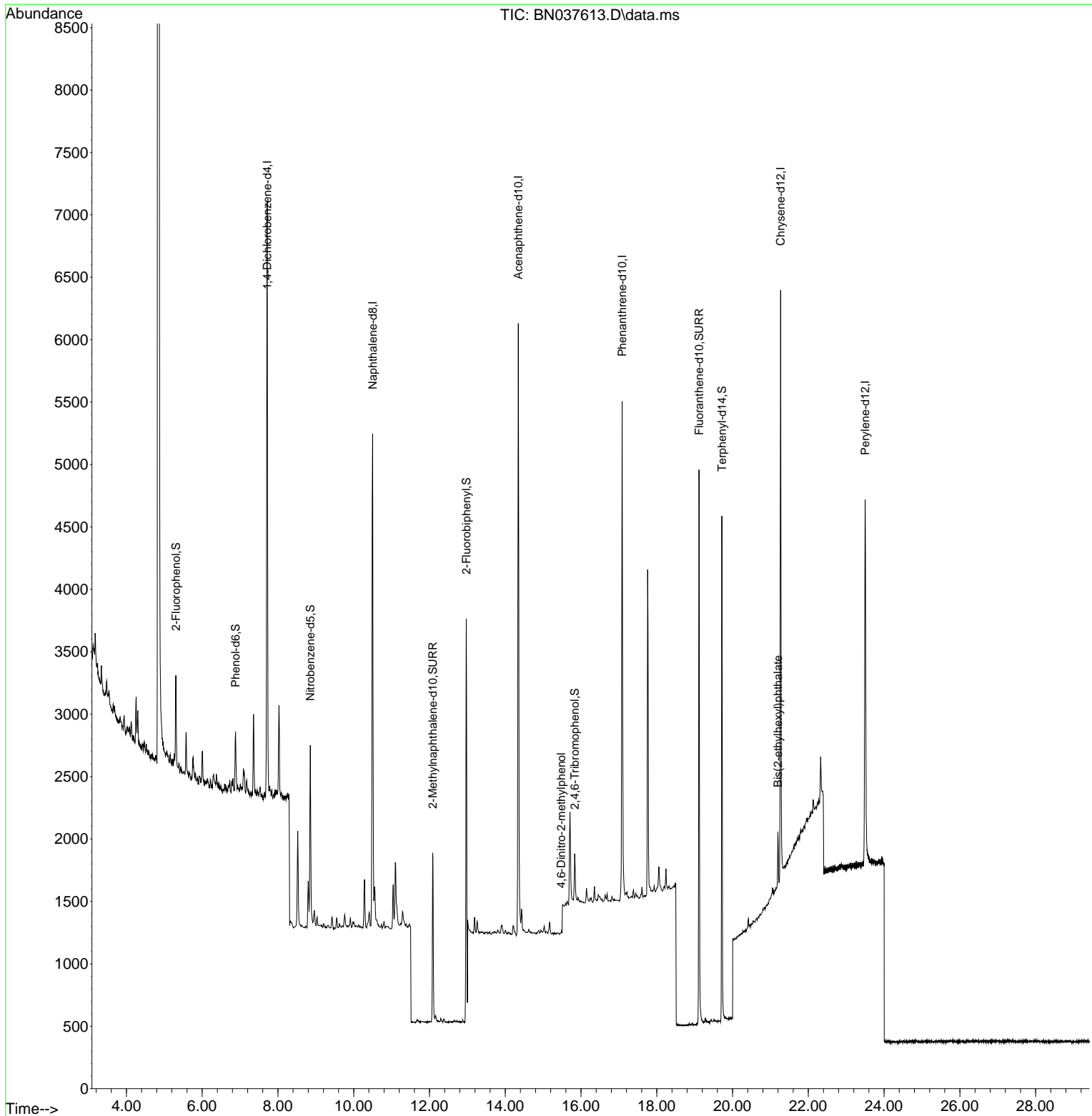
Compound	R.T.	QIon	Response	Conc	Units	Dev(Min)
Internal Standards						
1) 1,4-Dichlorobenzene-d4	7.717	152	2371	0.400	ng	0.00
7) Naphthalene-d8	10.498	136	5789	0.400	ng	0.00
13) Acenaphthene-d10	14.345	164	2832	0.400	ng	0.00
19) Phenanthrene-d10	17.086	188	5676	0.400	ng	0.00
29) Chrysene-d12	21.268	240	4482	0.400	ng	# 0.00
35) Perylene-d12	23.499	264	4034	0.400	ng	# 0.00
System Monitoring Compounds						
4) 2-Fluorophenol	5.305	112	578	0.108	ng	0.00
5) Phenol-d6	6.879	99	411	0.064	ng	0.00
8) Nitrobenzene-d5	8.854	82	1090	0.267	ng	0.00
11) 2-Methylnaphthalene-d10	12.085	152	1923	0.244	ng	0.00
14) 2,4,6-Tribromophenol	15.833	330	277	0.223	ng	0.00
15) 2-Fluorobiphenyl	12.973	172	4503	0.275	ng	0.00
27) Fluoranthene-d10	19.118	212	5122	0.343	ng	0.00
31) Terphenyl-d14	19.717	244	4041	0.438	ng	0.00
Target Compounds						
20) 4,6-Dinitro-2-methylph...	15.478	198	1	0.182	ng	# 1
34) Bis(2-ethylhexyl)phtha...	21.196	149	452	0.073	ng	# 99

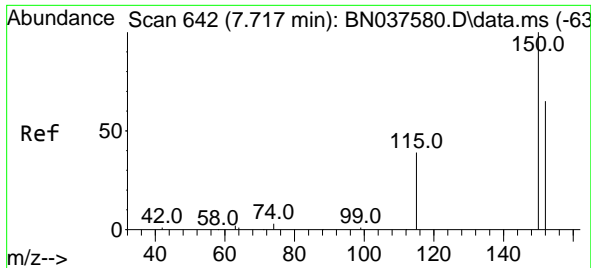
(#) = qualifier out of range (m) = manual integration (+) = signals summed

Data Path : Z:\svoasrv\HPCHEM1\BNA\_N\Data\BN081925\  
 Data File : BN037613.D  
 Acq On : 19 Aug 2025 18:30  
 Operator : RC/JU  
 Sample : Q2869-10  
 Misc :  
 ALS Vial : 15 Sample Multiplier: 1

Instrument :  
 BNA\_N  
 ClientSampleId :  
 EB02-081325

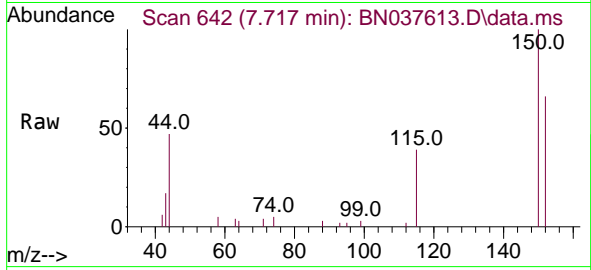
Quant Time: Aug 20 01:28:26 2025  
 Quant Method : Z:\svoasrv\HPCHEM1\BNA\_N\Methods\8270-SIM-BN081225.M  
 Quant Title : ASP BNA STANDARDS FOR 5 POINT CALIBRATION  
 QLast Update : Wed Aug 13 05:00:58 2025  
 Response via : Initial Calibration



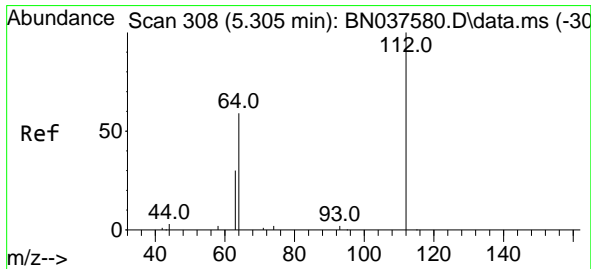
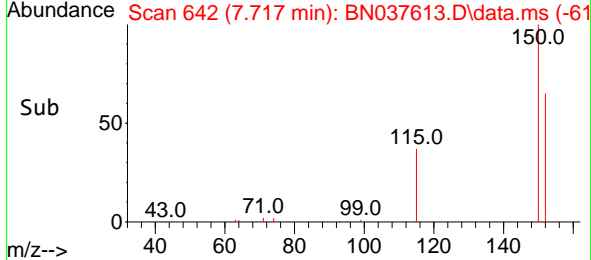
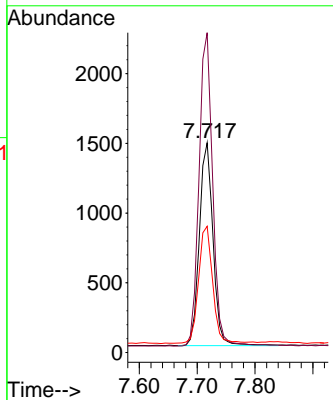


#1  
 1,4-Dichlorobenzene-d4  
 Concen: 0.400 ng  
 RT: 7.717 min Scan# 64  
 Delta R.T. 0.000 min  
 Lab File: BN037613.D  
 Acq: 19 Aug 2025 18:30

Instrument :  
 BNA\_N  
 ClientSampleId :  
 EB02-081325

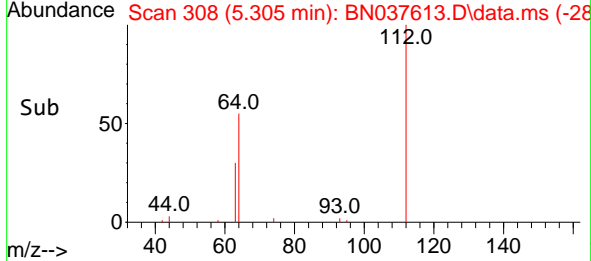
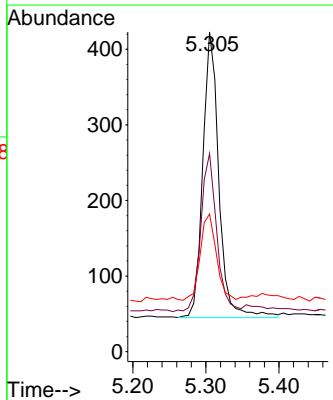
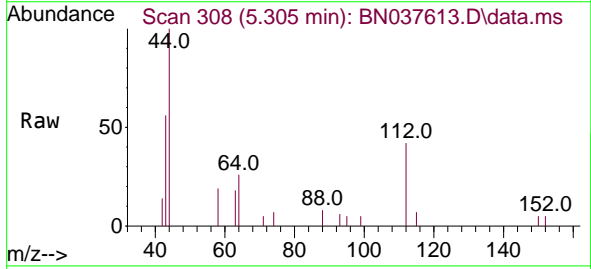


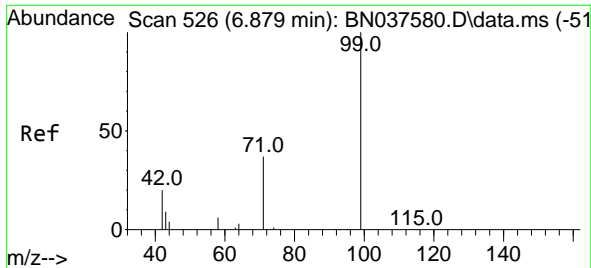
Tgt Ion:152 Resp: 2371  
 Ion Ratio Lower Upper  
 152 100  
 150 152.5 122.2 183.4  
 115 60.2 49.8 74.6



#4  
 2-Fluorophenol  
 Concen: 0.108 ng  
 RT: 5.305 min Scan# 308  
 Delta R.T. 0.000 min  
 Lab File: BN037613.D  
 Acq: 19 Aug 2025 18:30

Tgt Ion:112 Resp: 578  
 Ion Ratio Lower Upper  
 112 100  
 64 54.7 44.9 67.3  
 63 31.3 23.4 35.2



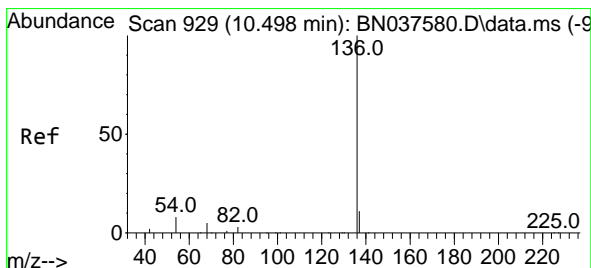
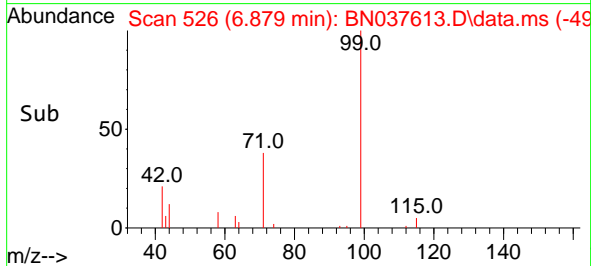
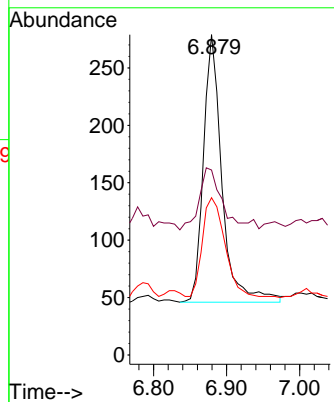
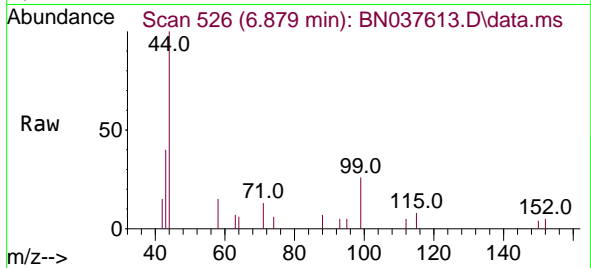


#5  
 Phenol-d6  
 Concen: 0.064 ng  
 RT: 6.879 min Scan# 51  
 Delta R.T. 0.000 min  
 Lab File: BN037613.D  
 Acq: 19 Aug 2025 18:30

Instrument :  
 BNA\_N  
 ClientSampleId :  
 EB02-081325

Tgt Ion: 99 Resp: 411

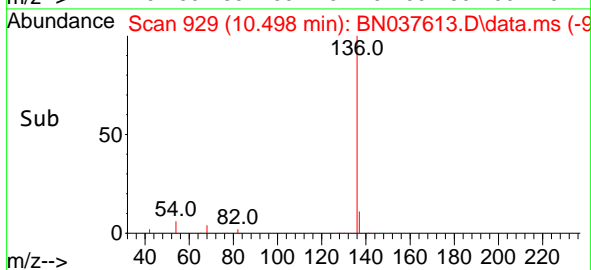
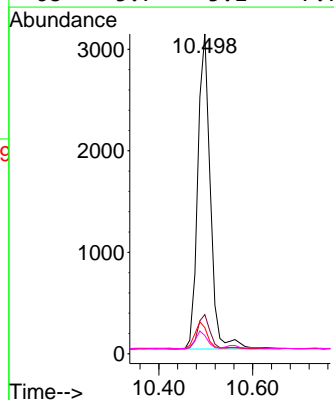
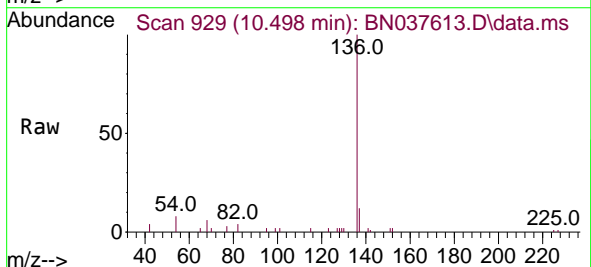
Ion	Ratio	Lower	Upper
99	100		
42	29.2	18.5	27.7#
71	45.7	28.6	42.8#

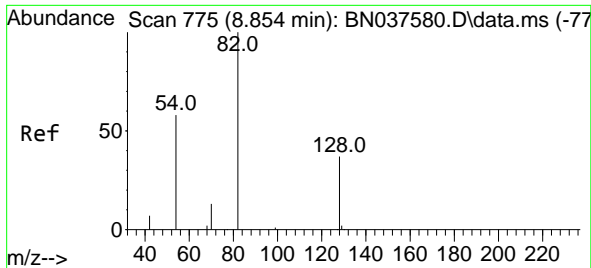


#7  
 Naphthalene-d8  
 Concen: 0.400 ng  
 RT: 10.498 min Scan# 929  
 Delta R.T. 0.000 min  
 Lab File: BN037613.D  
 Acq: 19 Aug 2025 18:30

Tgt Ion: 136 Resp: 5789

Ion	Ratio	Lower	Upper
136	100		
137	12.3	9.5	14.3
54	8.2	7.3	10.9
68	5.7	5.1	7.7

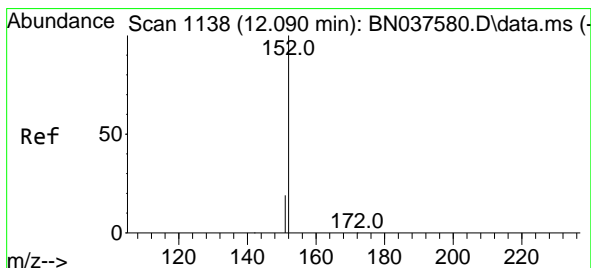
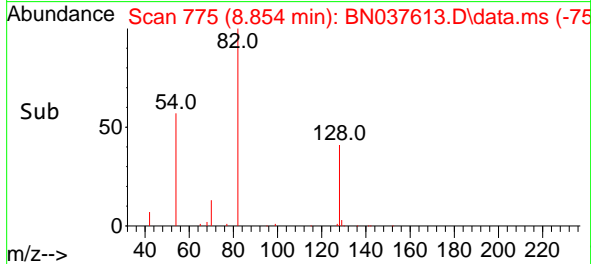
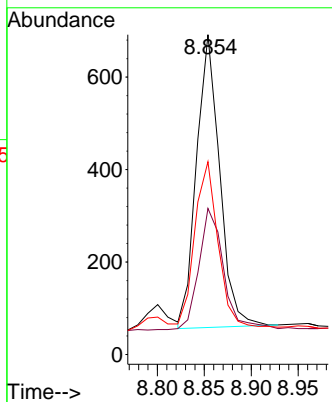
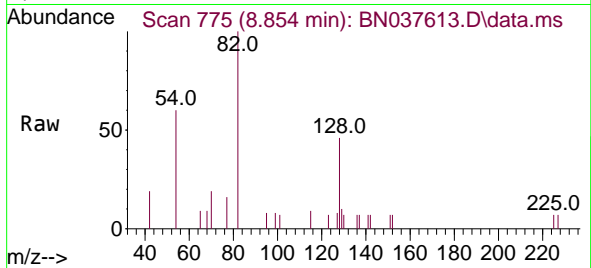




#8  
 Nitrobenzene-d5  
 Concen: 0.267 ng  
 RT: 8.854 min Scan# 775  
 Delta R.T. 0.000 min  
 Lab File: BN037613.D  
 Acq: 19 Aug 2025 18:30

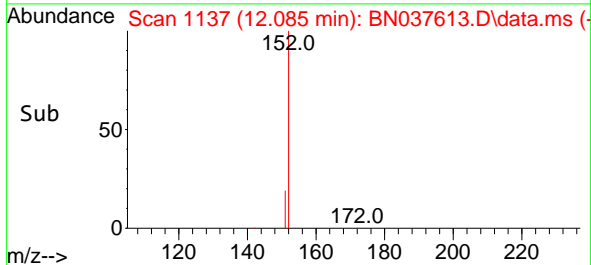
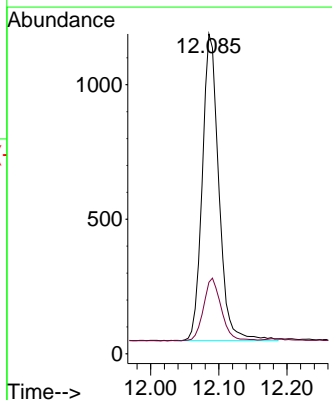
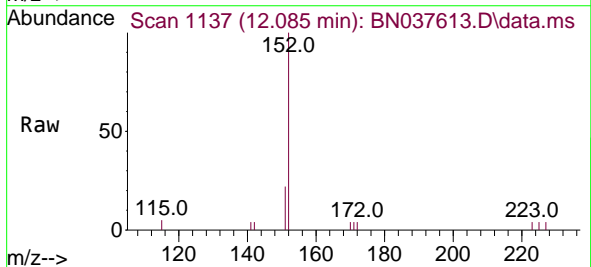
Instrument :  
 BNA\_N  
 ClientSampleId :  
 EB02-081325

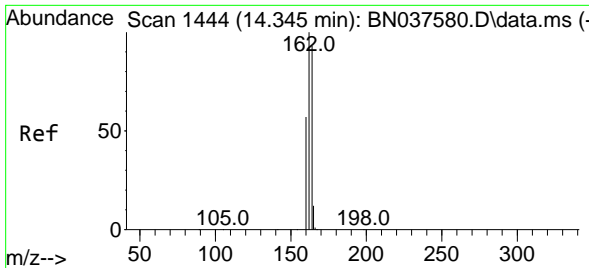
Tgt Ion	Resp	Lower	Upper
82	1090		
128	45.7	32.6	48.8
54	60.3	48.9	73.3



#11  
 2-Methylnaphthalene-d10  
 Concen: 0.244 ng  
 RT: 12.085 min Scan# 1137  
 Delta R.T. -0.005 min  
 Lab File: BN037613.D  
 Acq: 19 Aug 2025 18:30

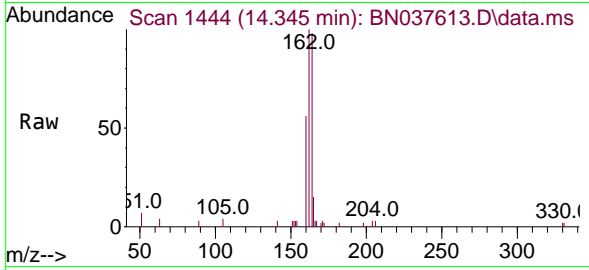
Tgt Ion	Resp	Lower	Upper
152	1923		
151	21.7	17.3	25.9





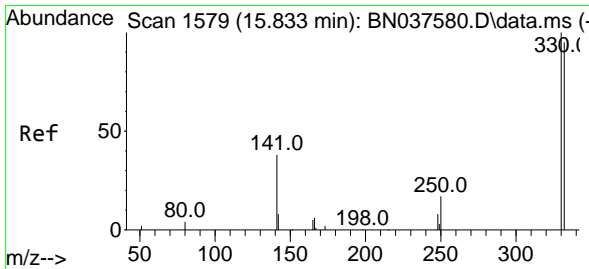
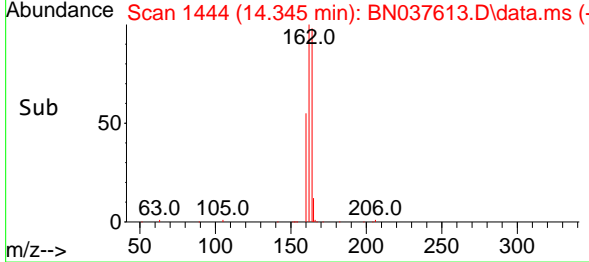
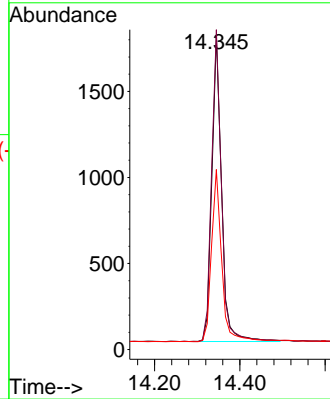
#13  
 Acenaphthene-d10  
 Concen: 0.400 ng  
 RT: 14.345 min Scan# 14  
 Delta R.T. 0.000 min  
 Lab File: BN037613.D  
 Acq: 19 Aug 2025 18:30

Instrument :  
 BNA\_N  
 ClientSampleId :  
 EB02-081325

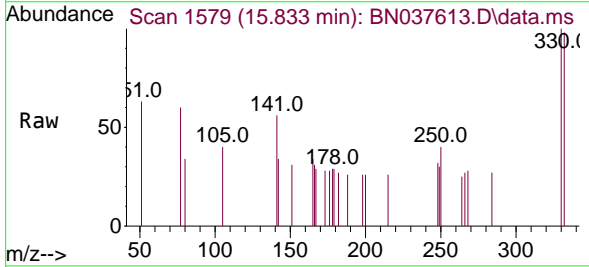


Tgt Ion:164 Resp: 2832

Ion	Ratio	Lower	Upper
164	100		
162	101.9	85.5	128.3
160	57.3	49.5	74.3

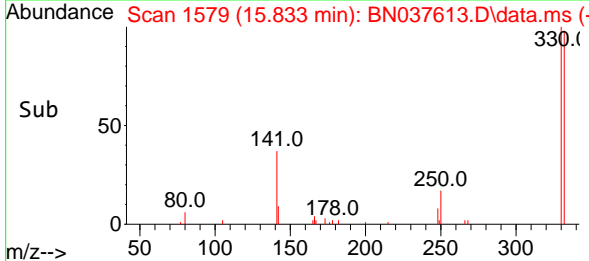
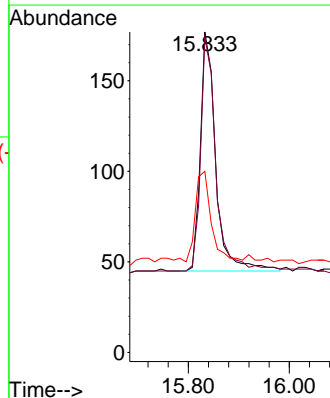


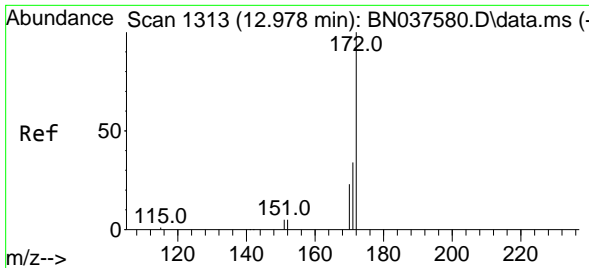
#14  
 2,4,6-Tribromophenol  
 Concen: 0.223 ng  
 RT: 15.833 min Scan# 1579  
 Delta R.T. 0.000 min  
 Lab File: BN037613.D  
 Acq: 19 Aug 2025 18:30



Tgt Ion:330 Resp: 277

Ion	Ratio	Lower	Upper
330	100		
332	97.5	77.4	116.0
141	38.3	30.9	46.3



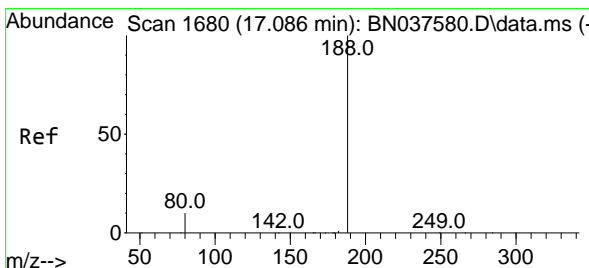
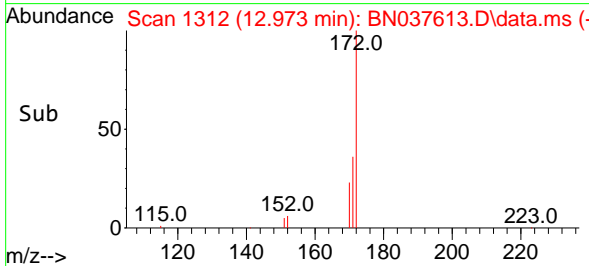
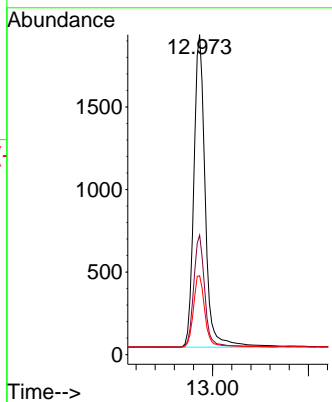
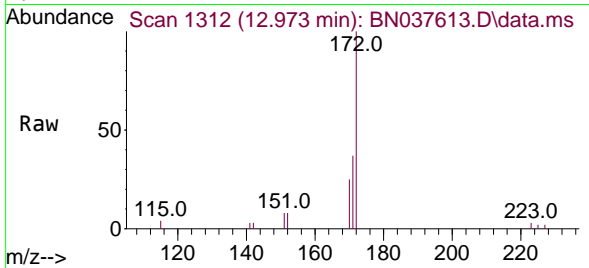


#15  
 2-Fluorobiphenyl  
 Concen: 0.275 ng  
 RT: 12.973 min Scan# 1312  
 Delta R.T. -0.005 min  
 Lab File: BN037613.D  
 Acq: 19 Aug 2025 18:30

Instrument :  
 BNA\_N  
 ClientSampleId :  
 EB02-081325

Tgt Ion:172 Resp: 4503

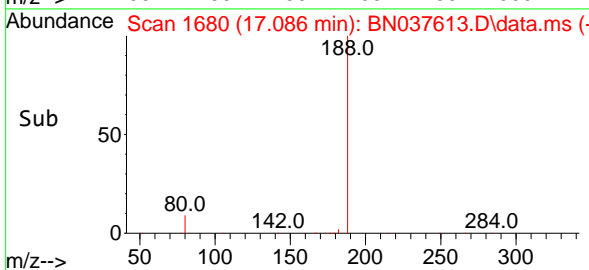
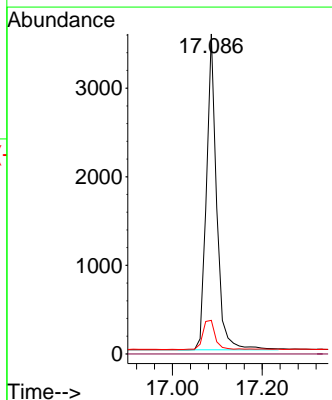
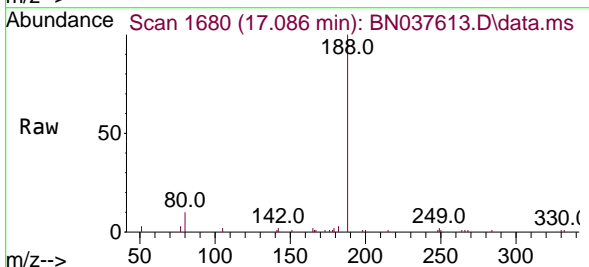
Ion	Ratio	Lower	Upper
172	100		
171	37.3	28.2	42.4
170	24.6	19.2	28.8

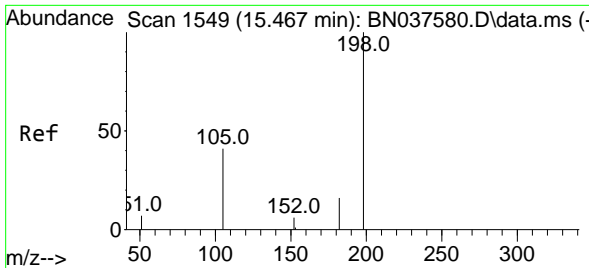


#19  
 Phenanthrene-d10  
 Concen: 0.400 ng  
 RT: 17.086 min Scan# 1680  
 Delta R.T. 0.000 min  
 Lab File: BN037613.D  
 Acq: 19 Aug 2025 18:30

Tgt Ion:188 Resp: 5676

Ion	Ratio	Lower	Upper
188	100		
94	0.0	0.0	0.0
80	10.5	9.1	13.7

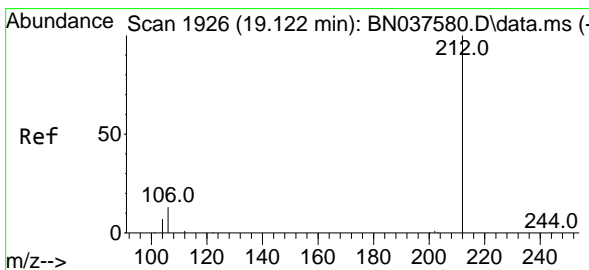
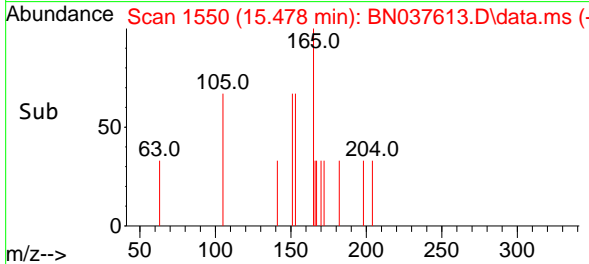
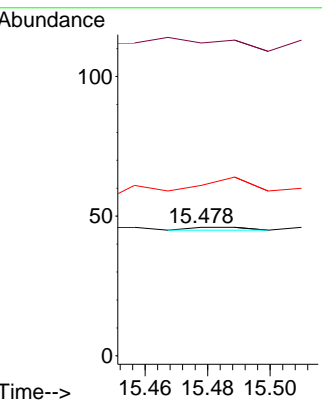
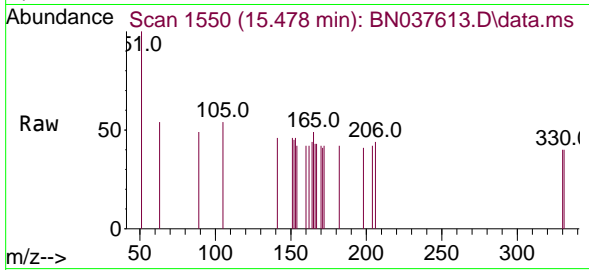




#20  
 4,6-Dinitro-2-methylphenol  
 Concen: 0.182 ng  
 RT: 15.478 min Scan# 11  
 Delta R.T. 0.011 min  
 Lab File: BN037613.D  
 Acq: 19 Aug 2025 18:30

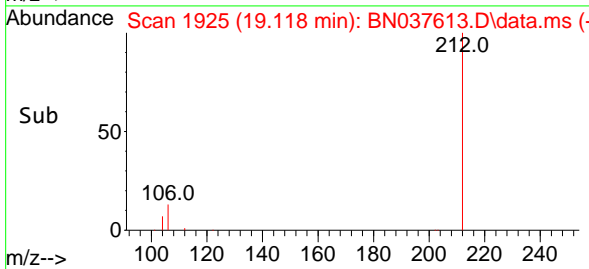
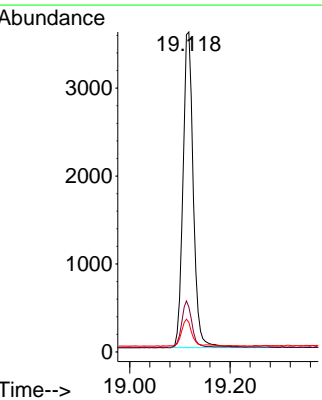
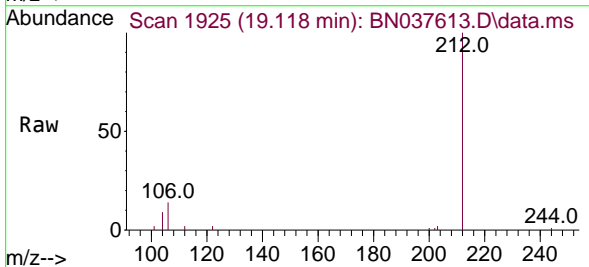
Instrument :  
 BNA\_N  
 ClientSampleId :  
 EB02-081325

Tgt Ion	Resp	Lower	Upper
198	100		
51	243.5	81.0	121.6#
105	132.6	52.5	78.7#

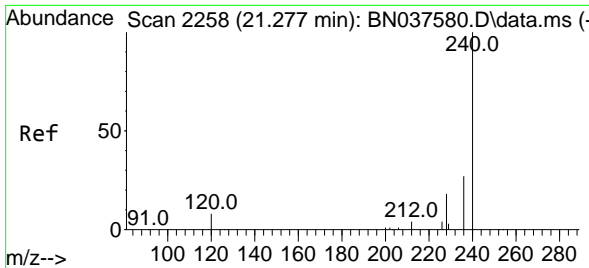


#27  
 Fluoranthene-d10  
 Concen: 0.343 ng  
 RT: 19.118 min Scan# 1925  
 Delta R.T. -0.005 min  
 Lab File: BN037613.D  
 Acq: 19 Aug 2025 18:30

Tgt Ion	Resp	Lower	Upper
212	100		
106	14.4	11.5	17.3
104	8.3	6.6	9.8



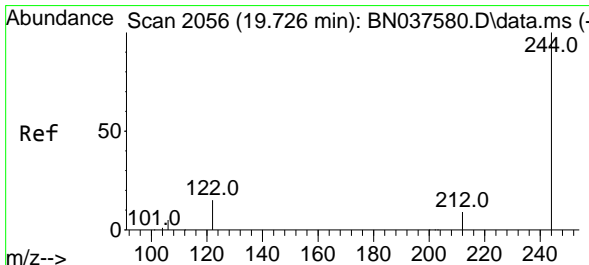
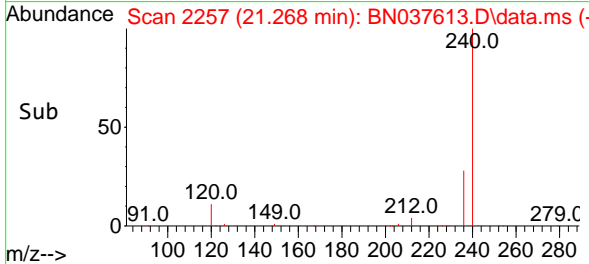
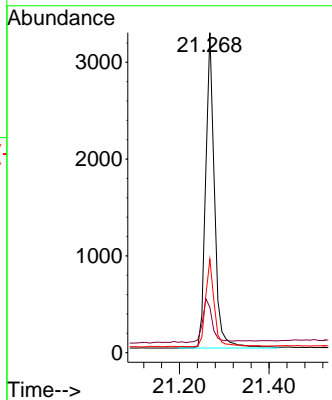
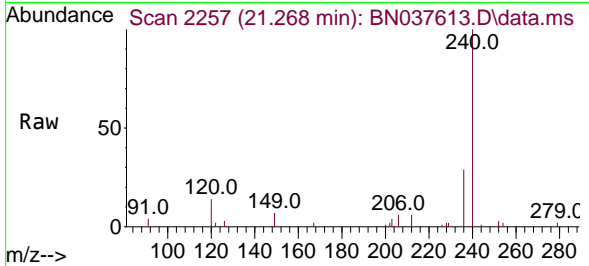




#29  
 Chrysene-d12  
 Concen: 0.400 ng  
 RT: 21.268 min Scan# 21  
 Delta R.T. -0.009 min  
 Lab File: BN037613.D  
 Acq: 19 Aug 2025 18:30

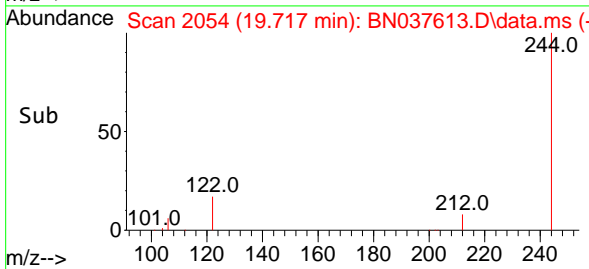
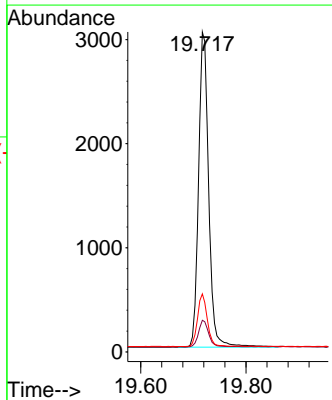
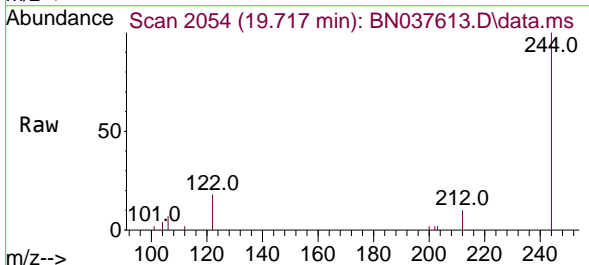
Instrument : BNA\_N  
 ClientSampleId : EB02-081325

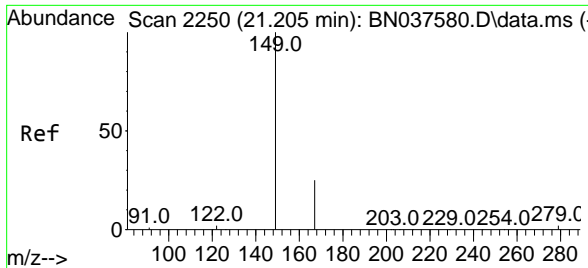
Tgt Ion	Resp	Lower	Upper
240	4482		
120	14.2	8.9	13.3#
236	29.2	22.6	33.8



#31  
 Terphenyl-d14  
 Concen: 0.438 ng  
 RT: 19.717 min Scan# 2054  
 Delta R.T. -0.009 min  
 Lab File: BN037613.D  
 Acq: 19 Aug 2025 18:30

Tgt Ion	Resp	Lower	Upper
244	4041		
212	9.9	8.2	12.2
122	18.2	13.2	19.8

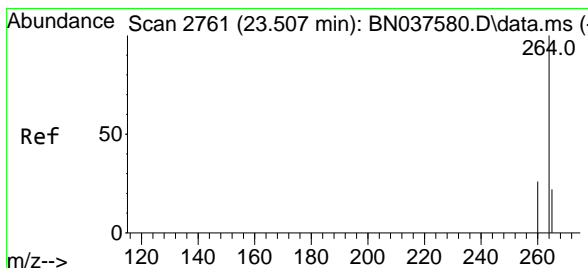
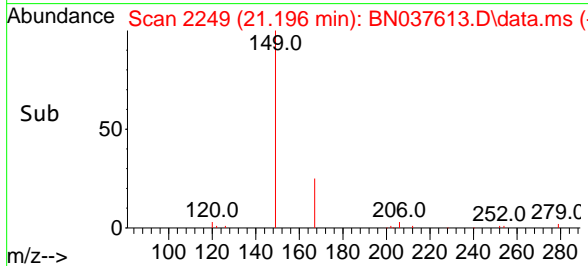
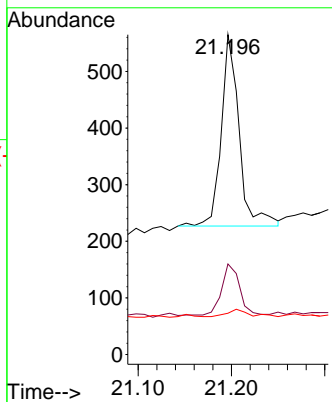
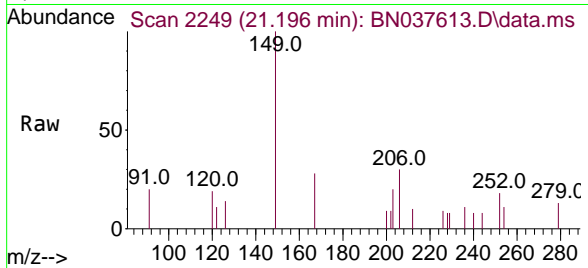




#34  
 Bis(2-ethylhexyl)phthalate  
 Concen: 0.073 ng  
 RT: 21.196 min Scan# 2119  
 Delta R.T. -0.009 min  
 Lab File: BN037613.D  
 Acq: 19 Aug 2025 18:30

Instrument : BNA\_N  
 ClientSampleId : EB02-081325

Tgt Ion	Resp	Lower	Upper
149	100		
167	26.1	20.5	30.7
279	4.4	2.6	4.0



#35  
 Perylene-d12  
 Concen: 0.400 ng  
 RT: 23.499 min Scan# 2758  
 Delta R.T. -0.009 min  
 Lab File: BN037613.D  
 Acq: 19 Aug 2025 18:30

Tgt Ion	Resp	Lower	Upper
264	100		
260	26.8	21.6	32.4
265	74.9	48.2	72.4

