

Data Path : Z:\svoasrv\HPCHEM1\BNA\_N\Data\BN081925\  
 Data File : BN037615.D  
 Acq On : 19 Aug 2025 19:43  
 Operator : RC/JU  
 Sample : Q2878-05  
 Misc :  
 ALS Vial : 17 Sample Multiplier: 1

Instrument :  
 BNA\_N  
 ClientSampleId :  
 MW-11A-37.5-081425

Quant Time: Aug 20 01:29:19 2025  
 Quant Method : Z:\svoasrv\HPCHEM1\BNA\_N\Methods\8270-SIM-BN081225.M  
 Quant Title : ASP BNA STANDARDS FOR 5 POINT CALIBRATION  
 QLast Update : Wed Aug 13 05:00:58 2025  
 Response via : Initial Calibration

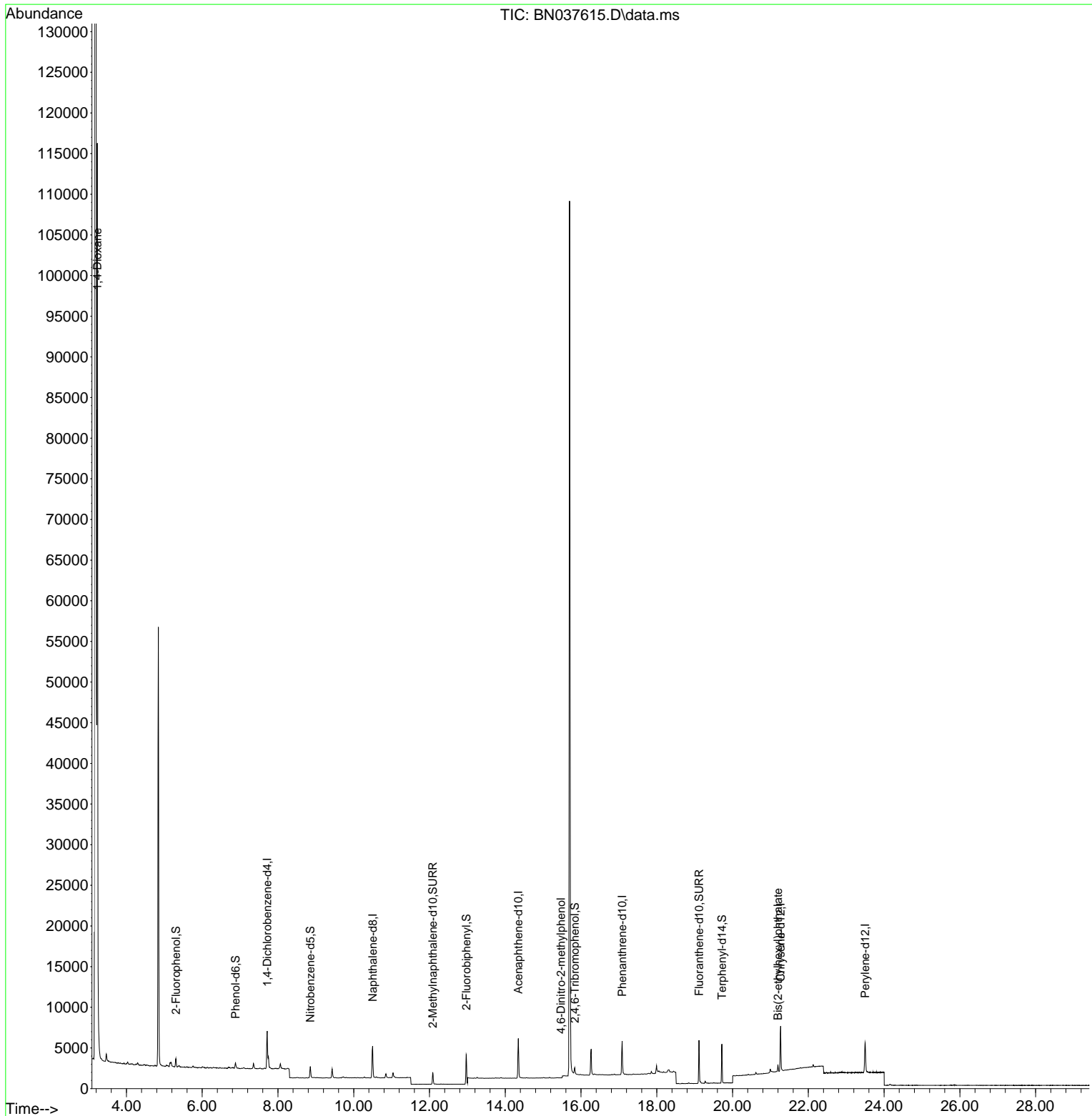
| Compound                      | R.T.   | QIon | Response | Conc   | Units | Dev(Min) |        |
|-------------------------------|--------|------|----------|--------|-------|----------|--------|
| -----                         |        |      |          |        |       |          |        |
| Internal Standards            |        |      |          |        |       |          |        |
| 1) 1,4-Dichlorobenzene-d4     | 7.717  | 152  | 2250     | 0.400  | ng    | 0.00     |        |
| 7) Naphthalene-d8             | 10.498 | 136  | 5479     | 0.400  | ng    | 0.00     |        |
| 13) Acenaphthene-d10          | 14.345 | 164  | 2729     | 0.400  | ng    | 0.00     |        |
| 19) Phenanthrene-d10          | 17.086 | 188  | 5759     | 0.400  | ng    | 0.00     |        |
| 29) Chrysene-d12              | 21.268 | 240  | 5360     | 0.400  | ng    | 0.00     |        |
| 35) Perylene-d12              | 23.499 | 264  | 4886     | 0.400  | ng    | 0.00     |        |
| System Monitoring Compounds   |        |      |          |        |       |          |        |
| 4) 2-Fluorophenol             | 5.305  | 112  | 751      | 0.147  | ng    | 0.00     |        |
| 5) Phenol-d6                  | 6.879  | 99   | 566      | 0.092  | ng    | 0.00     |        |
| 8) Nitrobenzene-d5            | 8.854  | 82   | 1174     | 0.304  | ng    | 0.00     |        |
| 11) 2-Methylnaphthalene-d10   | 12.085 | 152  | 2019     | 0.271  | ng    | 0.00     |        |
| 14) 2,4,6-Tribromophenol      | 15.833 | 330  | 463      | 0.388  | ng    | 0.00     |        |
| 15) 2-Fluorobiphenyl          | 12.973 | 172  | 4882     | 0.309  | ng    | 0.00     |        |
| 27) Fluoranthene-d10          | 19.113 | 212  | 5798     | 0.383  | ng    | 0.00     |        |
| 31) Terphenyl-d14             | 19.717 | 244  | 4557     | 0.413  | ng    | 0.00     |        |
| Target Compounds              |        |      |          |        |       |          |        |
| 2) 1,4-Dioxane                | 3.232  | 88   | 52511    | 24.394 | ng    | 99       | Qvalue |
| 20) 4,6-Dinitro-2-methylph... | 15.467 | 198  | 1        | 0.182  | ng    | #        | 1      |
| 34) Bis(2-ethylhexyl)phtha... | 21.196 | 149  | 811      | 0.110  | ng    |          | 99     |
| -----                         |        |      |          |        |       |          |        |

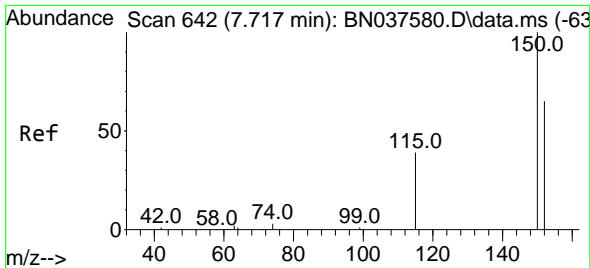
(#) = qualifier out of range (m) = manual integration (+) = signals summed

Data Path : Z:\svoasrv\HPCHEM1\BNA\_N\Data\BN081925\  
 Data File : BN037615.D  
 Acq On : 19 Aug 2025 19:43  
 Operator : RC/JU  
 Sample : Q2878-05  
 Misc :  
 ALS Vial : 17 Sample Multiplier: 1

Instrument :  
 BNA\_N  
 ClientSampleId :  
 MW-11A-37.5-081425

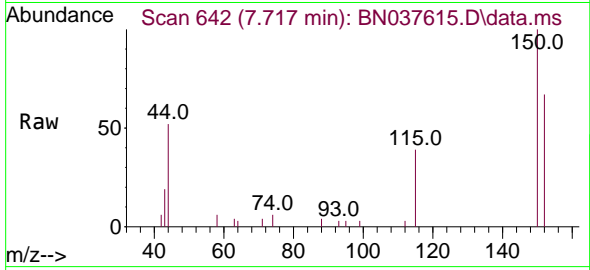
Quant Time: Aug 20 01:29:19 2025  
 Quant Method : Z:\svoasrv\HPCHEM1\BNA\_N\Methods\8270-SIM-BN081225.M  
 Quant Title : ASP BNA STANDARDS FOR 5 POINT CALIBRATION  
 QLast Update : Wed Aug 13 05:00:58 2025  
 Response via : Initial Calibration



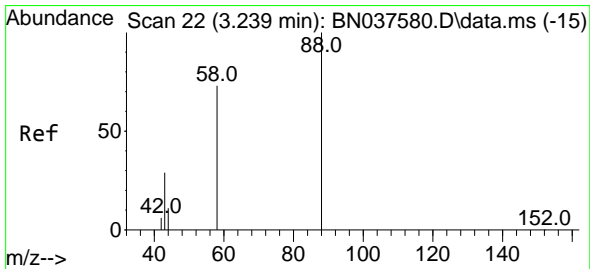
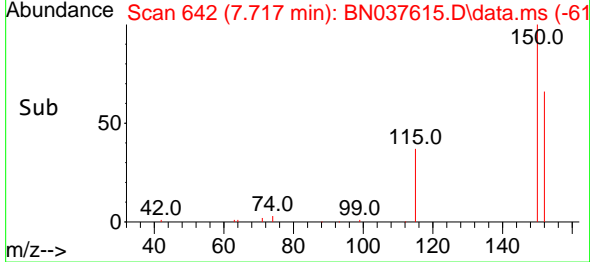
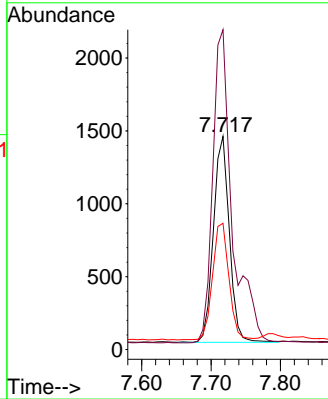


#1  
 1,4-Dichlorobenzene-d4  
 Concen: 0.400 ng  
 RT: 7.717 min Scan# 64  
 Delta R.T. 0.000 min  
 Lab File: BN037615.D  
 Acq: 19 Aug 2025 19:43

Instrument :  
 BNA\_N  
 ClientSampleId :  
 MW-11A-37.5-081425

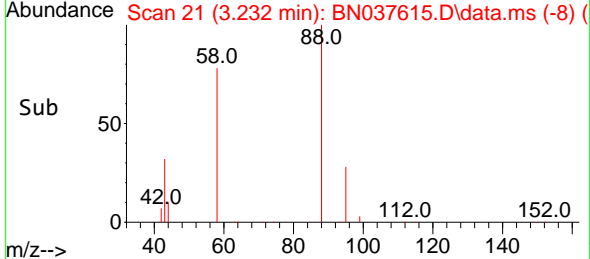
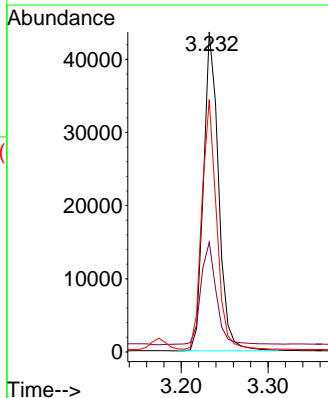
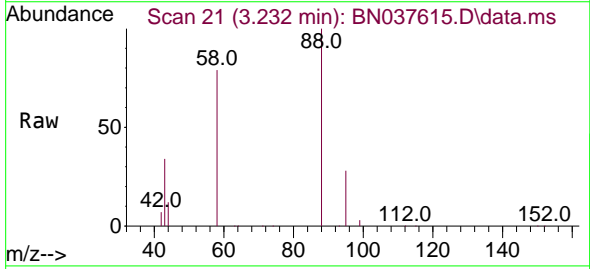


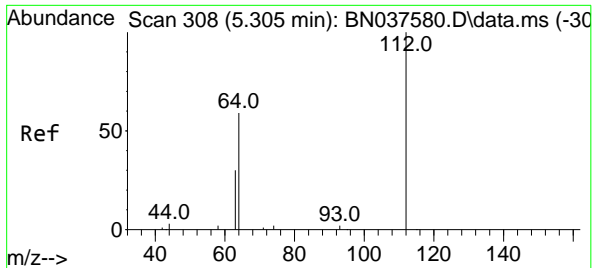
Tgt Ion:152 Resp: 2250  
 Ion Ratio Lower Upper  
 152 100  
 150 150.1 122.2 183.4  
 115 59.2 49.8 74.6



#2  
 1,4-Dioxane  
 Concen: 24.394 ng  
 RT: 3.232 min Scan# 21  
 Delta R.T. -0.007 min  
 Lab File: BN037615.D  
 Acq: 19 Aug 2025 19:43

Tgt Ion: 88 Resp: 52511  
 Ion Ratio Lower Upper  
 88 100  
 43 33.3 25.8 38.6  
 58 76.4 61.2 91.8

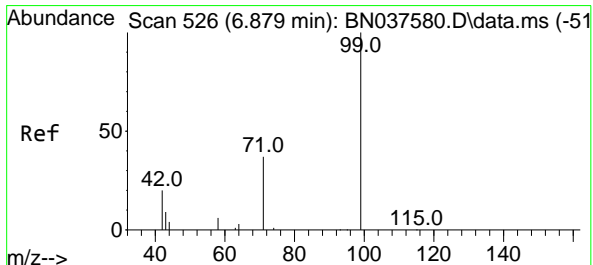
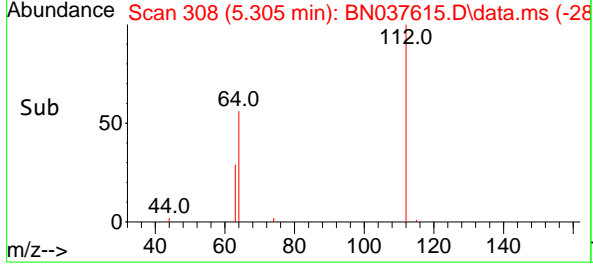
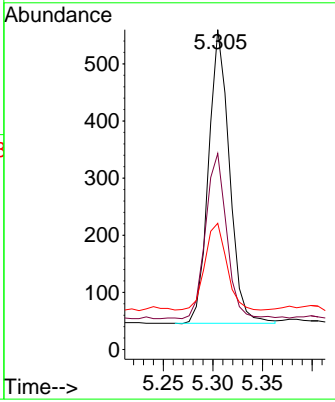
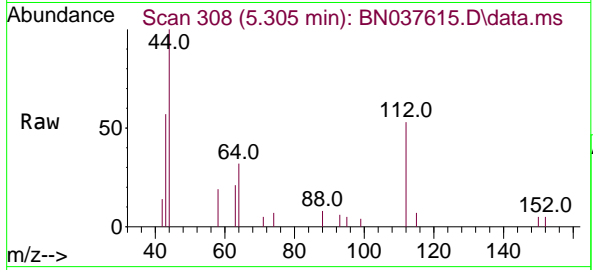




#4  
 2-Fluorophenol  
 Concen: 0.147 ng  
 RT: 5.305 min Scan# 308  
 Delta R.T. 0.000 min  
 Lab File: BN037615.D  
 Acq: 19 Aug 2025 19:43

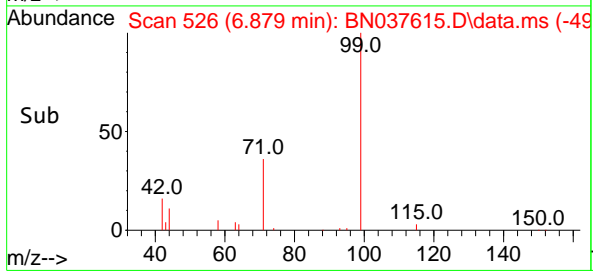
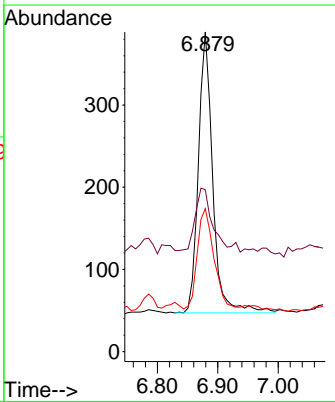
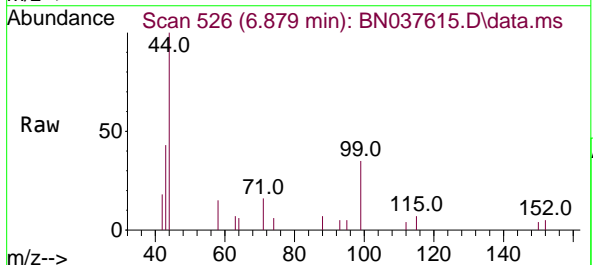
Instrument : BNA\_N  
 ClientSampleId : MW-11A-37.5-081425

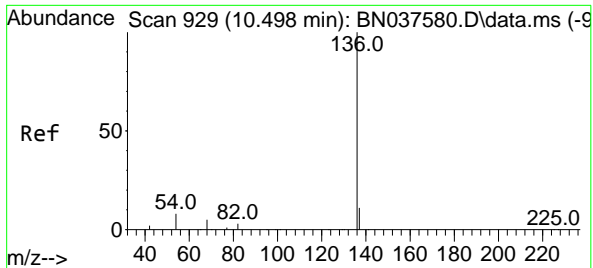
| Tgt Ion | Resp | Lower | Upper |
|---------|------|-------|-------|
| 112     | 100  |       |       |
| 64      | 57.3 | 44.9  | 67.3  |
| 63      | 32.2 | 23.4  | 35.2  |



#5  
 Phenol-d6  
 Concen: 0.092 ng  
 RT: 6.879 min Scan# 526  
 Delta R.T. 0.000 min  
 Lab File: BN037615.D  
 Acq: 19 Aug 2025 19:43

| Tgt Ion | Resp | Lower | Upper |
|---------|------|-------|-------|
| 99      | 100  |       |       |
| 42      | 27.6 | 18.5  | 27.7  |
| 71      | 43.1 | 28.6  | 42.8  |

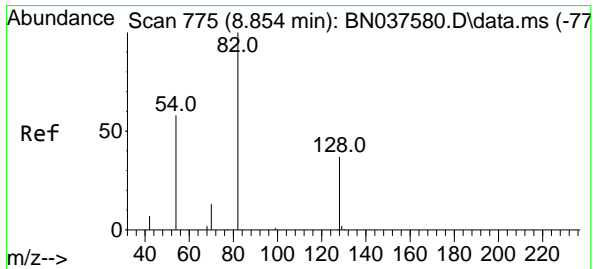
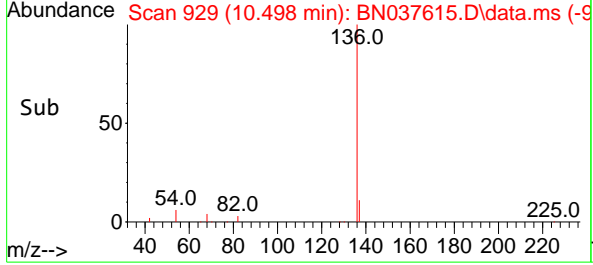
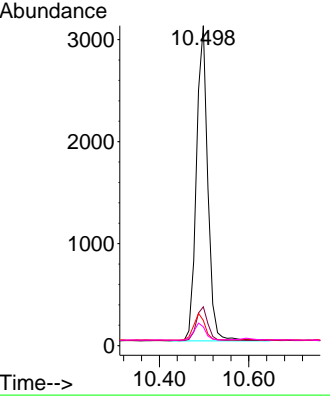
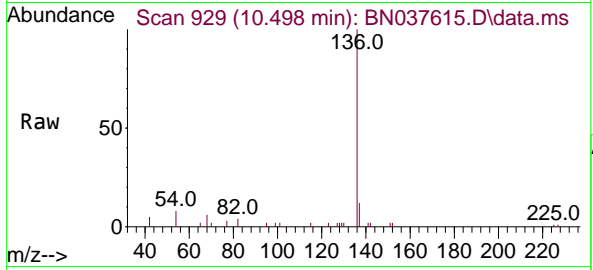




#7  
 Naphthalene-d8  
 Concen: 0.400 ng  
 RT: 10.498 min Scan# 911  
 Delta R.T. 0.000 min  
 Lab File: BN037615.D  
 Acq: 19 Aug 2025 19:43

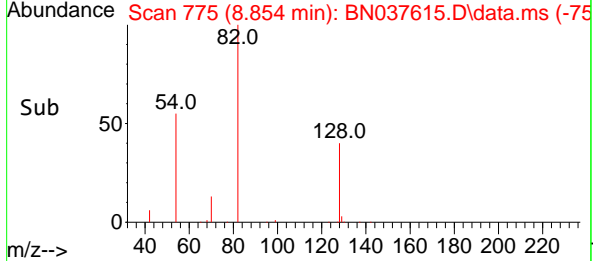
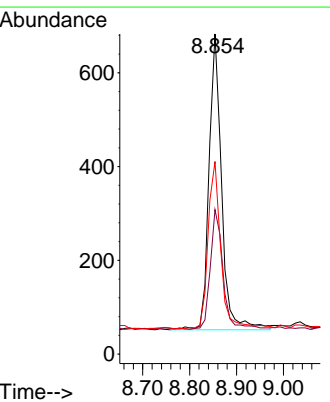
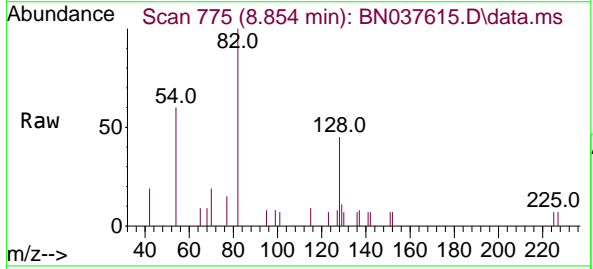
Instrument : BNA\_N  
 ClientSampleId : MW-11A-37.5-081425

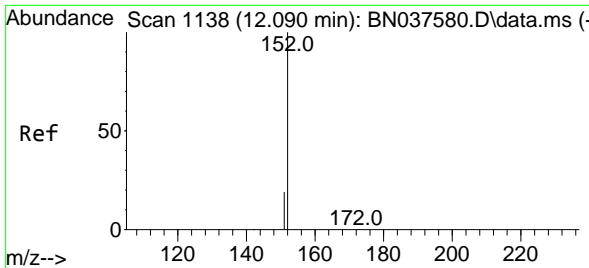
| Tgt Ion | Resp | Lower | Upper |
|---------|------|-------|-------|
| 136     | 100  |       |       |
| 137     | 12.1 | 9.5   | 14.3  |
| 54      | 7.9  | 7.3   | 10.9  |
| 68      | 5.9  | 5.1   | 7.7   |



#8  
 Nitrobenzene-d5  
 Concen: 0.304 ng  
 RT: 8.854 min Scan# 775  
 Delta R.T. 0.000 min  
 Lab File: BN037615.D  
 Acq: 19 Aug 2025 19:43

| Tgt Ion | Resp | Lower | Upper |
|---------|------|-------|-------|
| 82      | 100  |       |       |
| 128     | 45.1 | 32.6  | 48.8  |
| 54      | 60.2 | 48.9  | 73.3  |

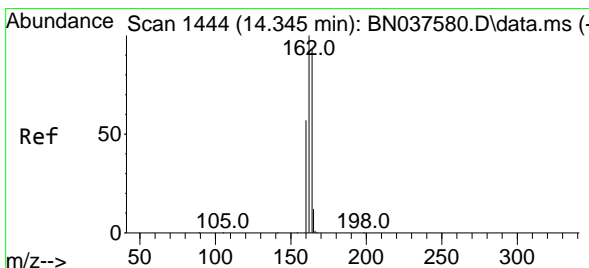
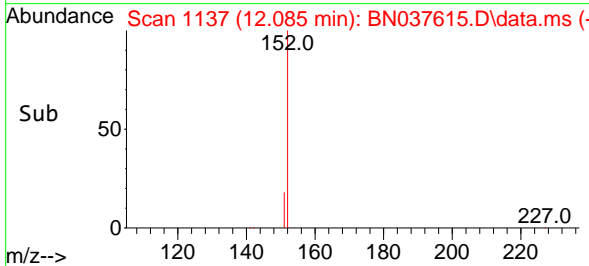
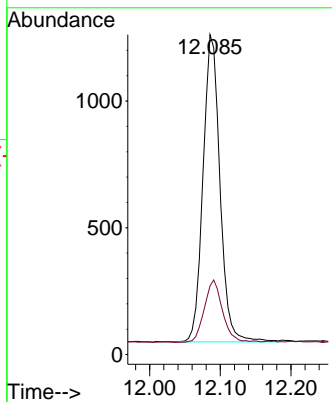
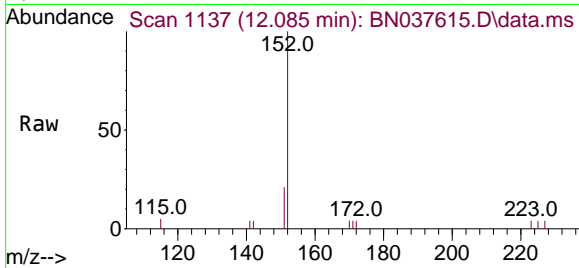




#11  
 2-Methylnaphthalene-d10  
 Concen: 0.271 ng  
 RT: 12.085 min Scan# 1137  
 Delta R.T. -0.005 min  
 Lab File: BN037615.D  
 Acq: 19 Aug 2025 19:43

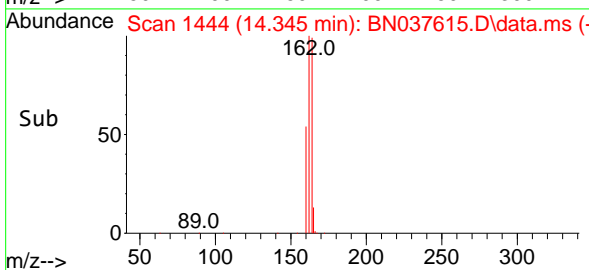
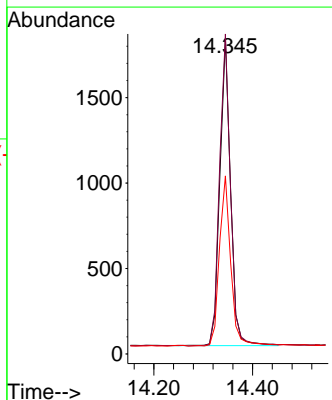
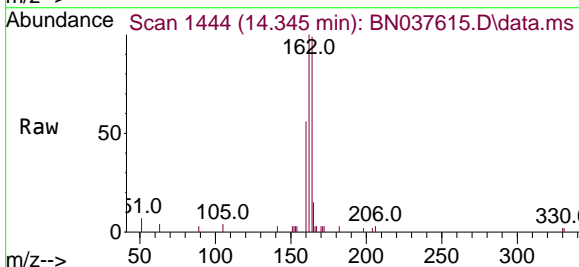
Instrument : BNA\_N  
 ClientSampleId : MW-11A-37.5-081425

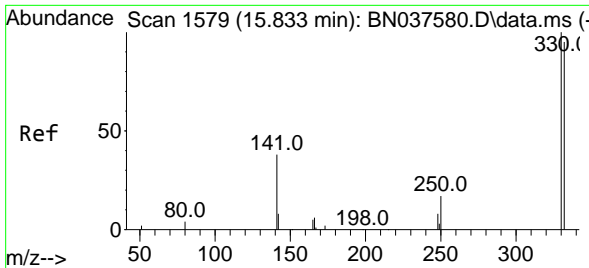
Tgt Ion:152 Resp: 2019  
 Ion Ratio Lower Upper  
 152 100  
 151 21.6 17.3 25.9



#13  
 Acenaphthene-d10  
 Concen: 0.400 ng  
 RT: 14.345 min Scan# 1444  
 Delta R.T. 0.000 min  
 Lab File: BN037615.D  
 Acq: 19 Aug 2025 19:43

Tgt Ion:164 Resp: 2729  
 Ion Ratio Lower Upper  
 164 100  
 162 101.3 85.5 128.3  
 160 56.4 49.5 74.3

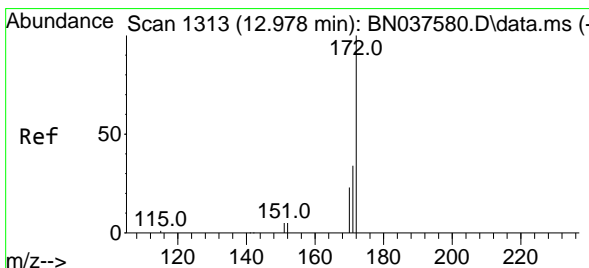
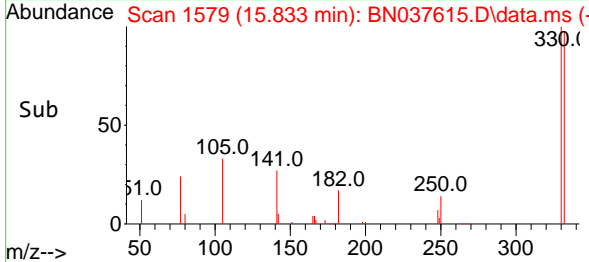
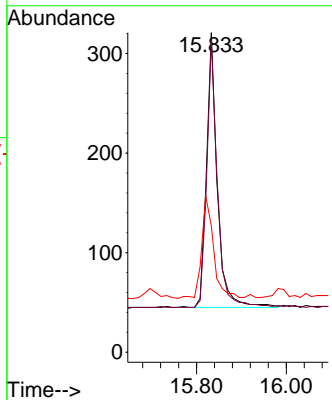
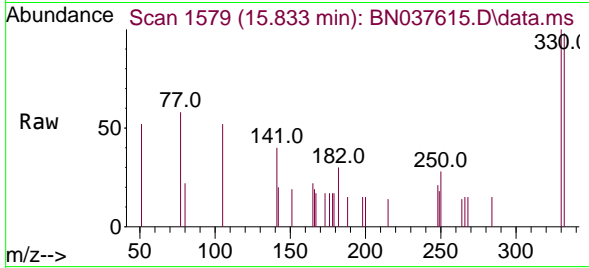




#14  
 2,4,6-Tribromophenol  
 Concen: 0.388 ng  
 RT: 15.833 min Scan# 11  
 Delta R.T. 0.000 min  
 Lab File: BN037615.D  
 Acq: 19 Aug 2025 19:43

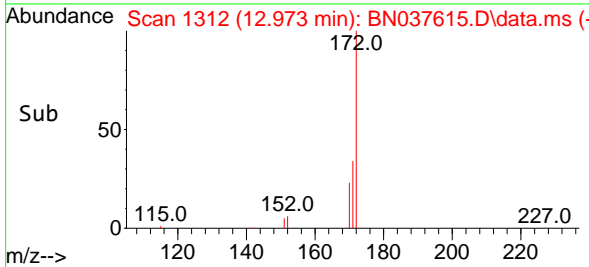
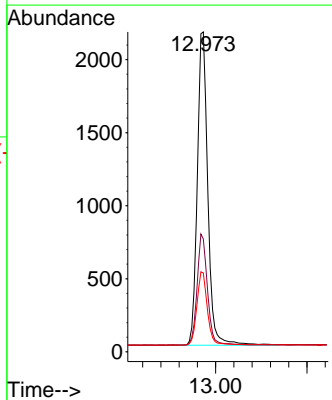
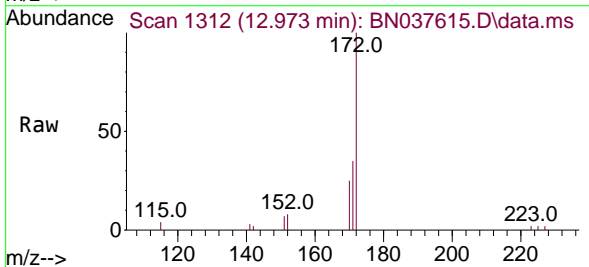
Instrument :  
 BNA\_N  
 ClientSampleId :  
 MW-11A-37.5-081425

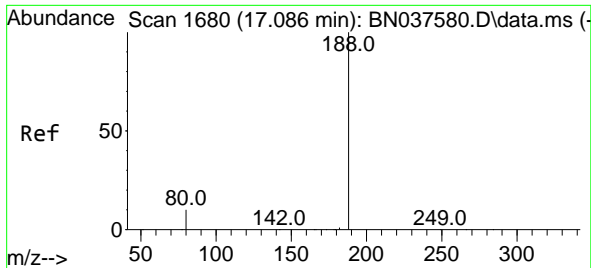
| Tgt Ion | Resp | Lower | Upper |
|---------|------|-------|-------|
| 330     | 100  |       |       |
| 332     | 96.1 | 77.4  | 116.0 |
| 141     | 41.0 | 30.9  | 46.3  |



#15  
 2-Fluorobiphenyl  
 Concen: 0.309 ng  
 RT: 12.973 min Scan# 1312  
 Delta R.T. -0.005 min  
 Lab File: BN037615.D  
 Acq: 19 Aug 2025 19:43

| Tgt Ion | Resp | Lower | Upper |
|---------|------|-------|-------|
| 172     | 100  |       |       |
| 171     | 35.3 | 28.2  | 42.4  |
| 170     | 24.7 | 19.2  | 28.8  |

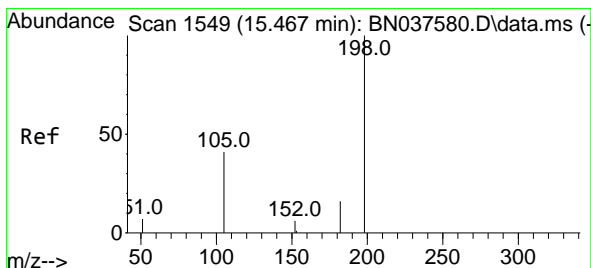
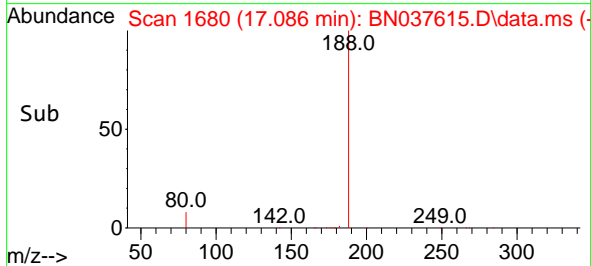
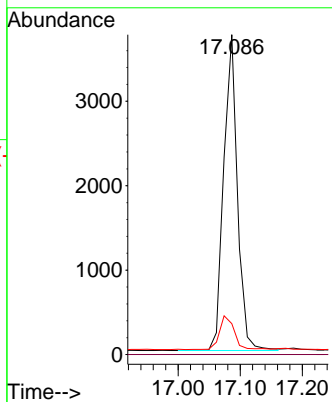
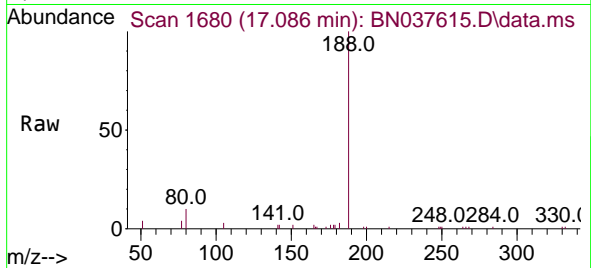




#19  
 Phenanthrene-d10  
 Concen: 0.400 ng  
 RT: 17.086 min Scan# 10  
 Delta R.T. 0.000 min  
 Lab File: BN037615.D  
 Acq: 19 Aug 2025 19:43

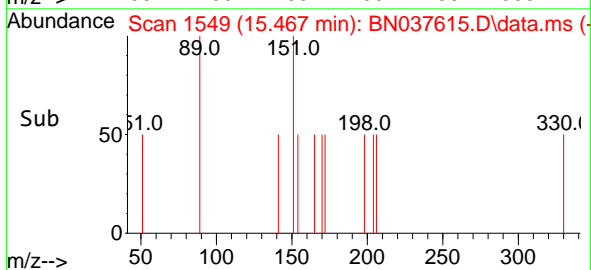
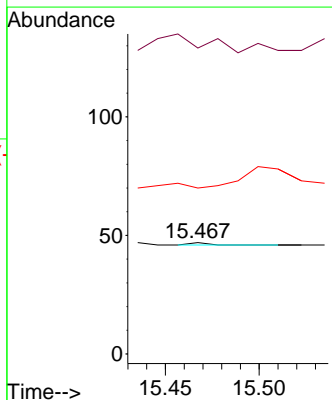
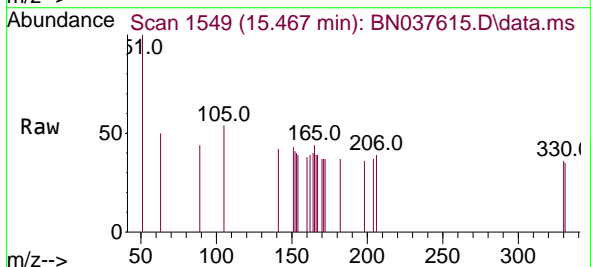
Instrument :  
 BNA\_N  
 ClientSampleId :  
 MW-11A-37.5-081425

| Tgt Ion | Resp | Lower | Upper |
|---------|------|-------|-------|
| 188     | 100  |       |       |
| 94      | 0.0  | 0.0   | 0.0   |
| 80      | 9.7  | 9.1   | 13.7  |

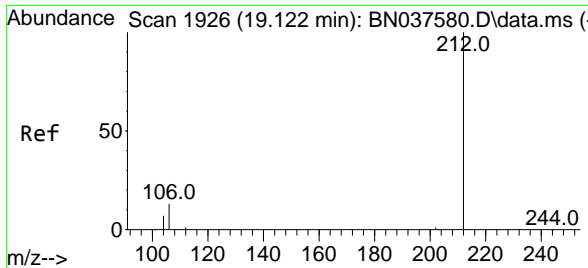


#20  
 4,6-Dinitro-2-methylphenol  
 Concen: 0.182 ng  
 RT: 15.467 min Scan# 1549  
 Delta R.T. 0.000 min  
 Lab File: BN037615.D  
 Acq: 19 Aug 2025 19:43

| Tgt Ion | Resp  | Lower | Upper  |
|---------|-------|-------|--------|
| 198     | 100   |       |        |
| 51      | 274.5 | 81.0  | 121.6# |
| 105     | 148.9 | 52.5  | 78.7#  |



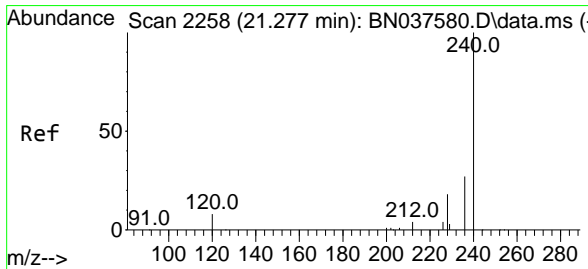
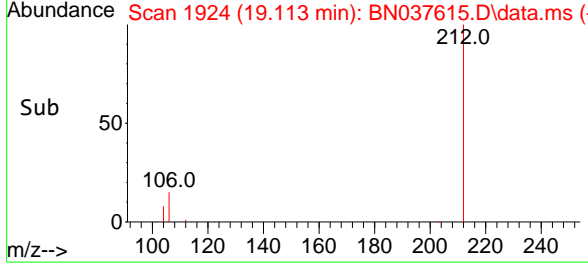
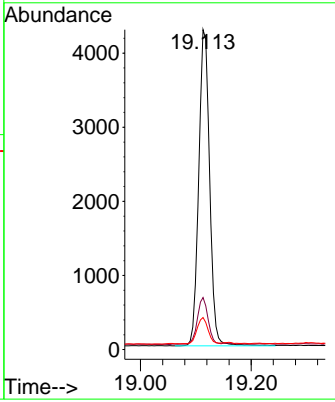
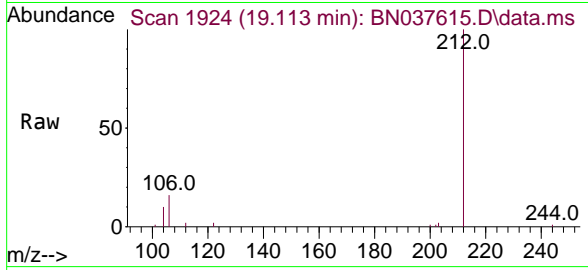




#27  
 Fluoranthene-d10  
 Concen: 0.383 ng  
 RT: 19.113 min Scan# 1924  
 Delta R.T. -0.009 min  
 Lab File: BN037615.D  
 Acq: 19 Aug 2025 19:43

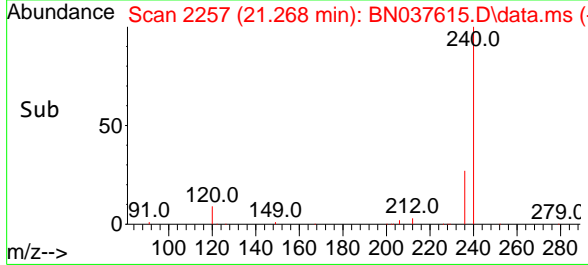
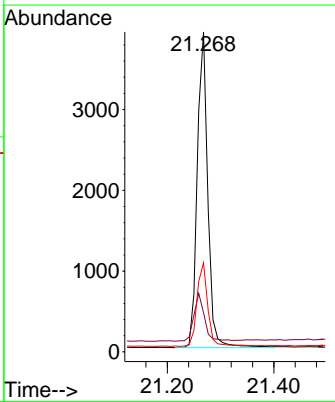
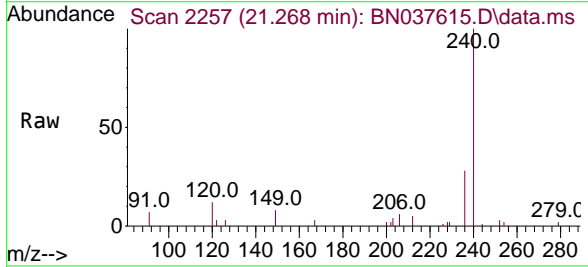
Instrument : BNA\_N  
 ClientSampleId : MW-11A-37.5-081425

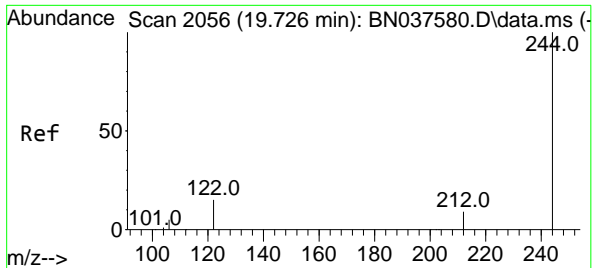
| Tgt Ion | Resp | Lower | Upper |
|---------|------|-------|-------|
| 212     | 100  |       |       |
| 106     | 14.5 | 11.5  | 17.3  |
| 104     | 8.2  | 6.6   | 9.8   |



#29  
 Chrysene-d12  
 Concen: 0.400 ng  
 RT: 21.268 min Scan# 2257  
 Delta R.T. -0.009 min  
 Lab File: BN037615.D  
 Acq: 19 Aug 2025 19:43

| Tgt Ion | Resp | Lower | Upper |
|---------|------|-------|-------|
| 240     | 100  |       |       |
| 120     | 12.3 | 8.9   | 13.3  |
| 236     | 27.8 | 22.6  | 33.8  |



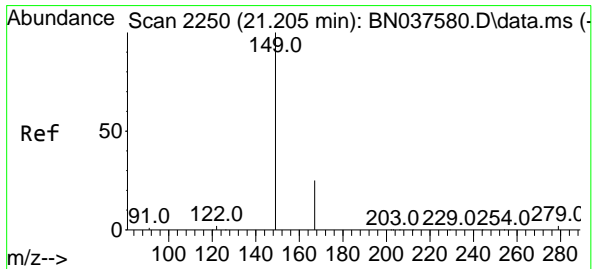
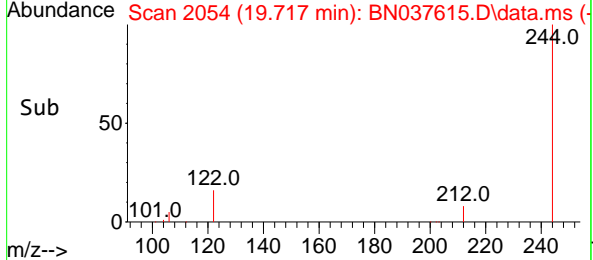
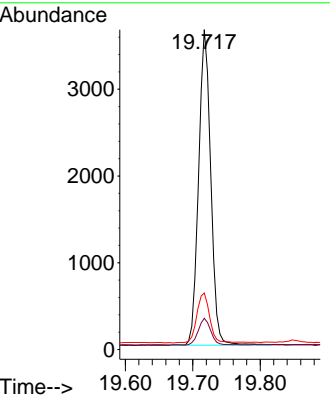
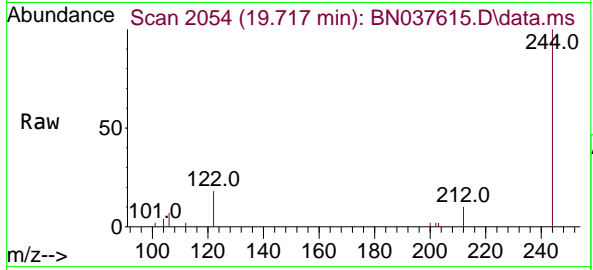


#31  
 Terphenyl-d14  
 Concen: 0.413 ng  
 RT: 19.717 min Scan# 2054  
 Delta R.T. -0.009 min  
 Lab File: BN037615.D  
 Acq: 19 Aug 2025 19:43

Instrument : BNA\_N  
 ClientSampleId : MW-11A-37.5-081425

Tgt Ion:244 Resp: 4557

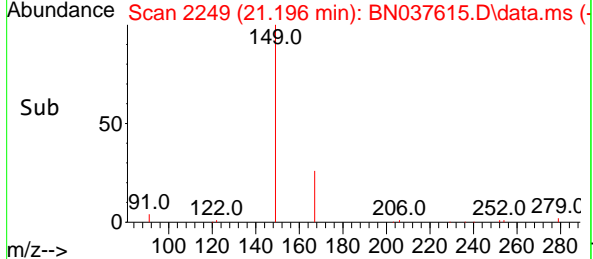
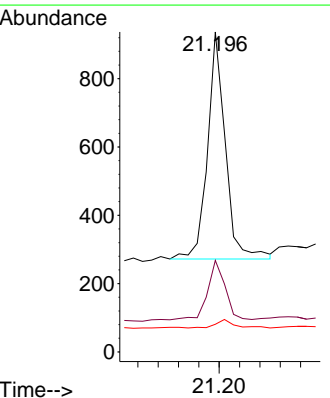
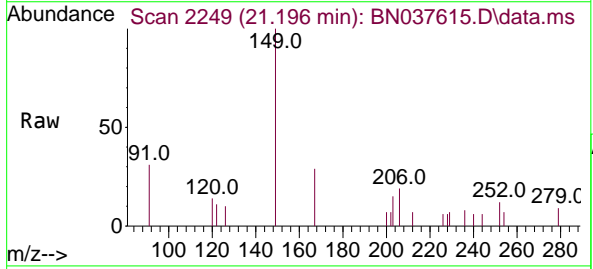
| Ion | Ratio | Lower | Upper |
|-----|-------|-------|-------|
| 244 | 100   |       |       |
| 212 | 9.8   | 8.2   | 12.2  |
| 122 | 17.7  | 13.2  | 19.8  |

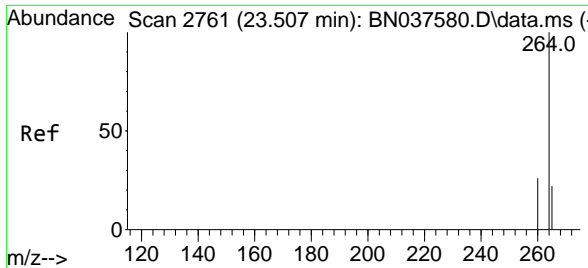


#34  
 Bis(2-ethylhexyl)phthalate  
 Concen: 0.110 ng  
 RT: 21.196 min Scan# 2249  
 Delta R.T. -0.009 min  
 Lab File: BN037615.D  
 Acq: 19 Aug 2025 19:43

Tgt Ion:149 Resp: 811

| Ion | Ratio | Lower | Upper |
|-----|-------|-------|-------|
| 149 | 100   |       |       |
| 167 | 25.4  | 20.5  | 30.7  |
| 279 | 3.9   | 2.6   | 4.0   |





#35  
 Perylene-d12  
 Concen: 0.400 ng  
 RT: 23.499 min Scan# 21  
 Delta R.T. -0.009 min  
 Lab File: BN037615.D  
 Acq: 19 Aug 2025 19:43

Instrument :  
 BNA\_N  
 ClientSampleId :  
 MW-11A-37.5-081425

Tgt Ion:264 Resp: 4886

| Ion | Ratio | Lower | Upper |
|-----|-------|-------|-------|
| 264 | 100   |       |       |
| 260 | 27.4  | 21.6  | 32.4  |
| 265 | 66.6  | 48.2  | 72.4  |

