

Data Path : Z:\svoasrv\HPCHEM1\BNA_N\Data\BN081925\
 Data File : BN037623.D
 Acq On : 20 Aug 2025 07:13
 Operator : RC/JU
 Sample : Q2881-01
 Misc :
 ALS Vial : 24 Sample Multiplier: 1

Instrument :
 BNA_N
 ClientSampleId :
 RW8-SP100-20250814

Quant Time: Aug 20 08:17:03 2025
 Quant Method : Z:\svoasrv\HPCHEM1\BNA_N\Methods\8270-SIM-BN081225.M
 Quant Title : ASP BNA STANDARDS FOR 5 POINT CALIBRATION
 QLast Update : Wed Aug 13 05:00:58 2025
 Response via : Initial Calibration

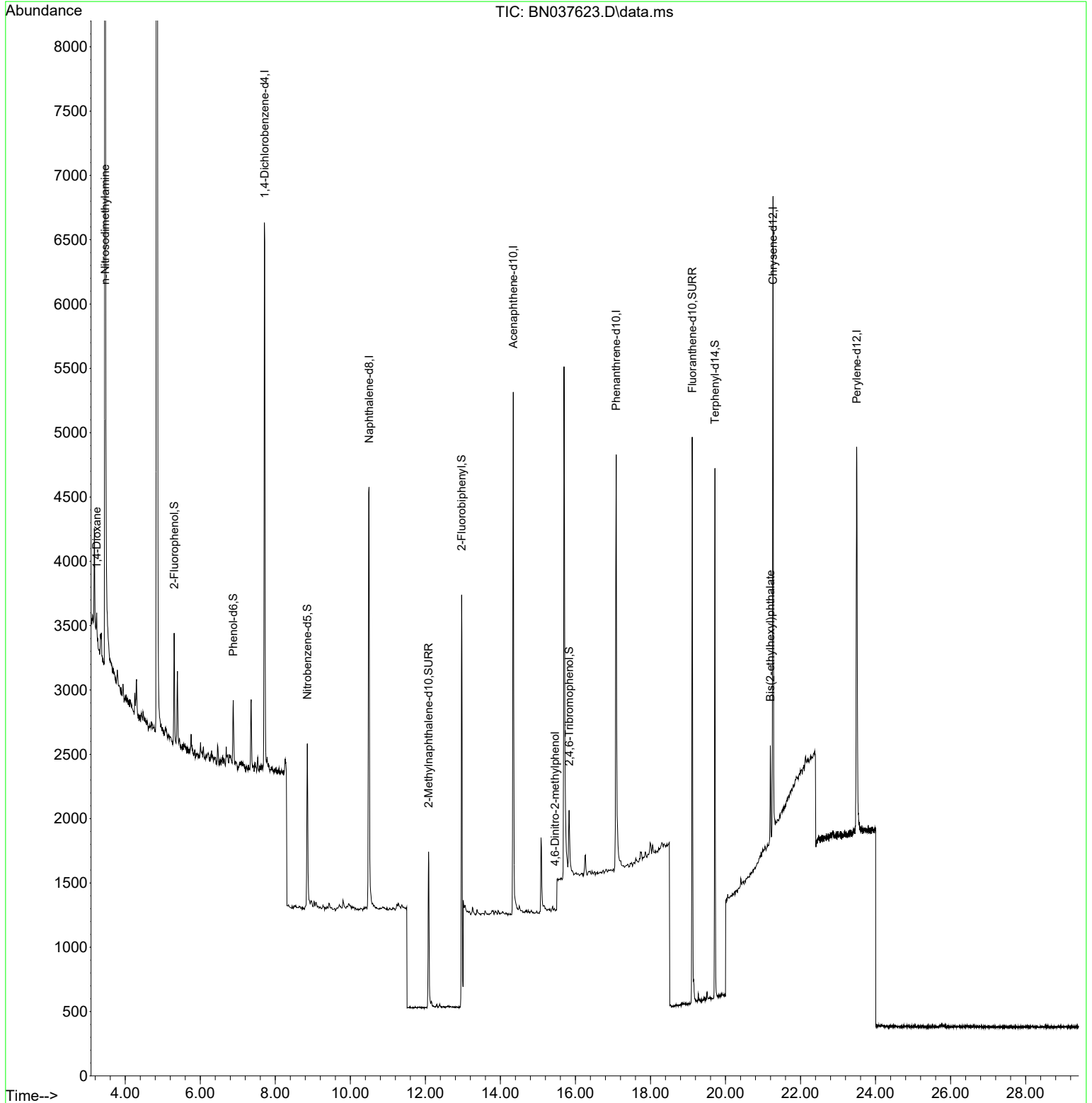
Compound	R.T.	QIon	Response	Conc	Units	Dev(Min)
Internal Standards						
1) 1,4-Dichlorobenzene-d4	7.717	152	2130	0.400	ng	0.00
7) Naphthalene-d8	10.498	136	4994	0.400	ng	0.00
13) Acenaphthene-d10	14.345	164	2388	0.400	ng	0.00
19) Phenanthrene-d10	17.086	188	5113	0.400	ng	0.00
29) Chrysene-d12	21.268	240	4521	0.400	ng	0.00
35) Perylene-d12	23.499	264	4086	0.400	ng	# 0.00
System Monitoring Compounds						
4) 2-Fluorophenol	5.305	112	640	0.133	ng	0.00
5) Phenol-d6	6.879	99	437	0.075	ng	0.00
8) Nitrobenzene-d5	8.854	82	1120	0.318	ng	0.00
11) 2-Methylnaphthalene-d10	12.086	152	1772	0.261	ng	0.00
14) 2,4,6-Tribromophenol	15.833	330	366	0.350	ng	0.00
15) 2-Fluorobiphenyl	12.968	172	4248	0.308	ng	0.00
27) Fluoranthene-d10	19.113	212	4954	0.368	ng	0.00
31) Terphenyl-d14	19.717	244	3923	0.422	ng	0.00
Target Compounds						
2) 1,4-Dioxane	3.239	88	133	0.065	ng	# 14
3) n-Nitrosodimethylamine	3.463	42	2630	1.010	ng	# 1
20) 4,6-Dinitro-2-methylph...	15.457	198	4	0.185	ng	# 1
34) Bis(2-ethylhexyl)phtha...	21.196	149	697	0.112	ng	# 98

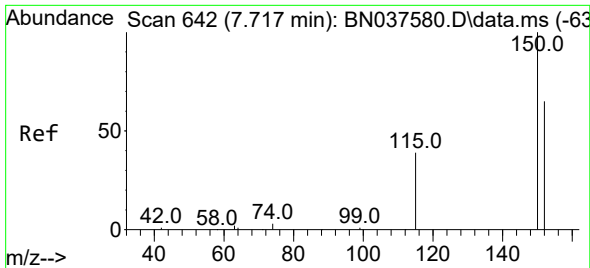
(#) = qualifier out of range (m) = manual integration (+) = signals summed

Data Path : Z:\svoasrv\HPCHEM1\BNA_N\Data\BN081925\
 Data File : BN037623.D
 Acq On : 20 Aug 2025 07:13
 Operator : RC/JU
 Sample : Q2881-01
 Misc :
 ALS Vial : 24 Sample Multiplier: 1

Instrument :
 BNA_N
 ClientSampleId :
 RW8-SP100-20250814

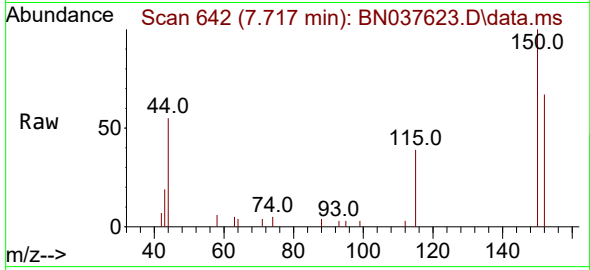
Quant Time: Aug 20 08:17:03 2025
 Quant Method : Z:\svoasrv\HPCHEM1\BNA_N\Methods\8270-SIM-BN081225.M
 Quant Title : ASP BNA STANDARDS FOR 5 POINT CALIBRATION
 QLast Update : Wed Aug 13 05:00:58 2025
 Response via : Initial Calibration



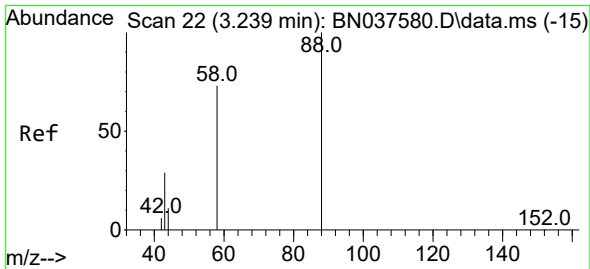
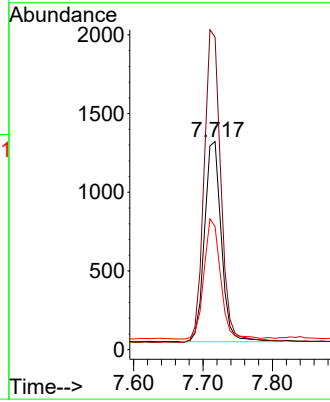
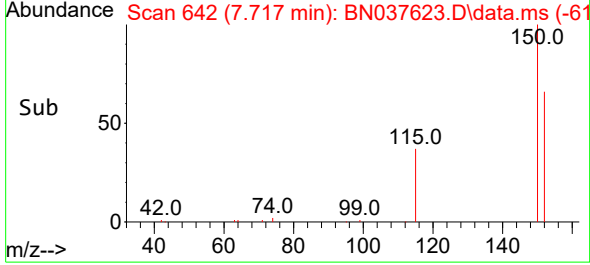


#1
 1,4-Dichlorobenzene-d4
 Concen: 0.400 ng
 RT: 7.717 min Scan# 64
 Delta R.T. 0.000 min
 Lab File: BN037623.D
 Acq: 20 Aug 2025 07:13

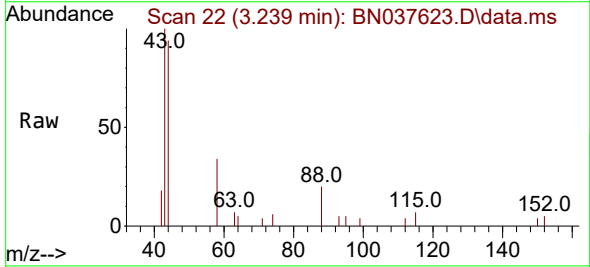
Instrument :
 BNA_N
 ClientSampleId :
 RW8-SP100-20250814



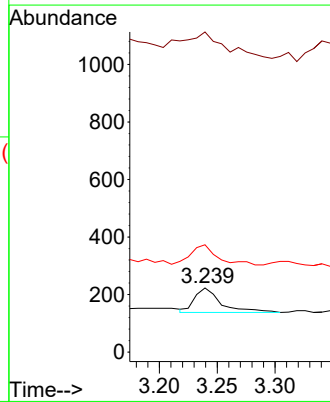
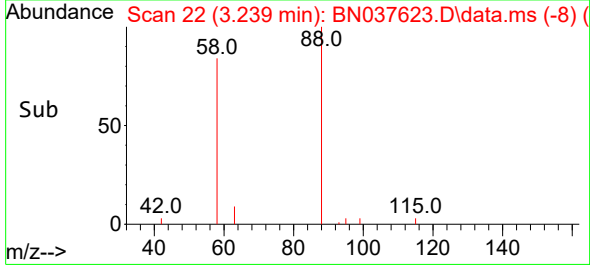
Tgt Ion: 152 Resp: 2130
 Ion Ratio Lower Upper
 152 100
 150 150.0 122.2 183.4
 115 59.1 49.8 74.6

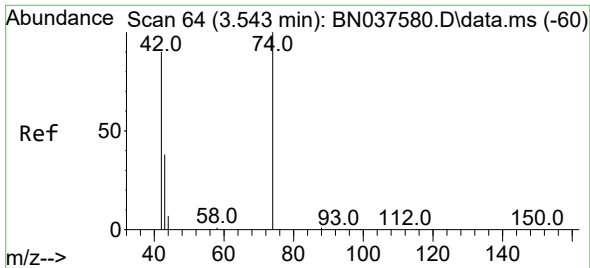


#2
 1,4-Dioxane
 Concen: 0.065 ng
 RT: 3.239 min Scan# 22
 Delta R.T. 0.000 min
 Lab File: BN037623.D
 Acq: 20 Aug 2025 07:13



Tgt Ion: 88 Resp: 133
 Ion Ratio Lower Upper
 88 100
 43 184.2 25.8 38.6#
 58 82.7 61.2 91.8

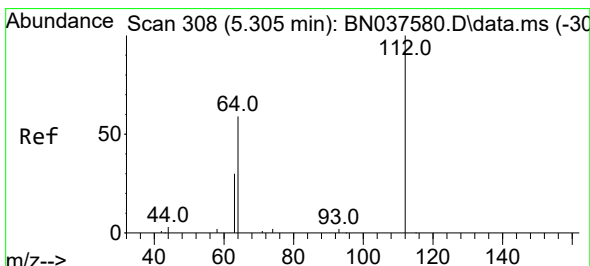
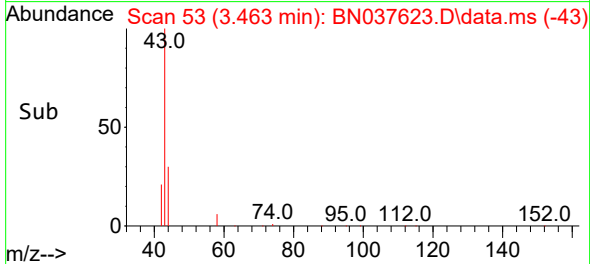
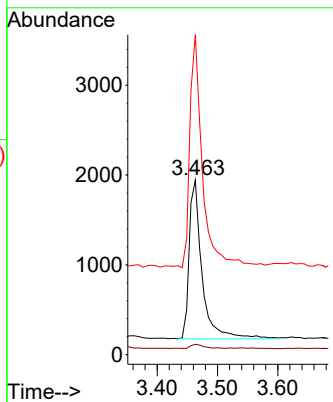
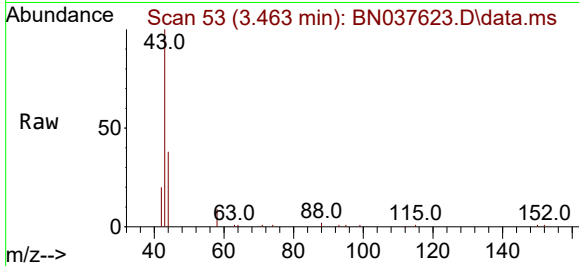




#3
 n-Nitrosodimethylamine
 Concen: 1.010 ng
 RT: 3.463 min Scan# 51
 Delta R.T. -0.079 min
 Lab File: BN037623.D
 Acq: 20 Aug 2025 07:13

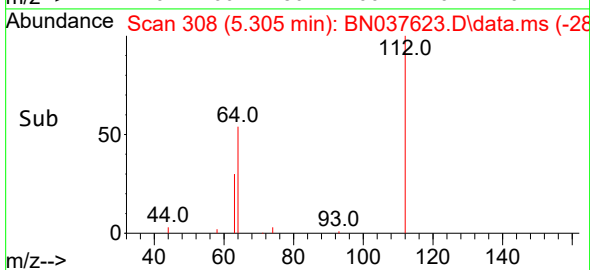
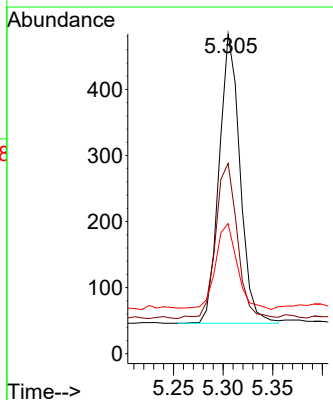
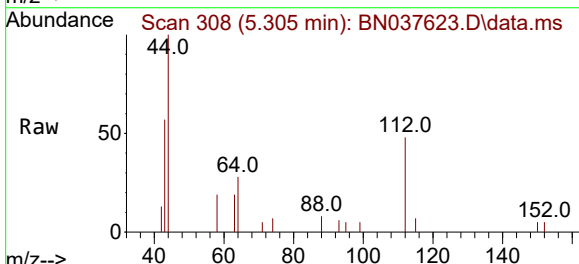
Instrument :
 BNA_N
 ClientSampleId :
 RW8-SP100-20250814

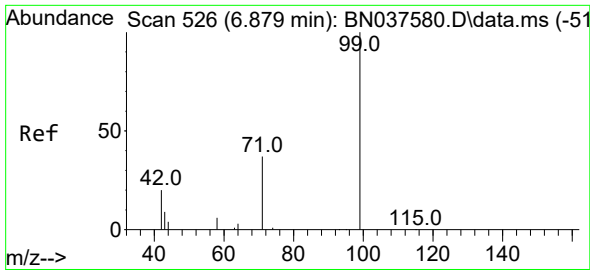
Tgt Ion: 42 Resp: 2630
 Ion Ratio Lower Upper
 42 100
 74 2.6 82.0 123.0#
 44 140.4 7.9 11.9#



#4
 2-Fluorophenol
 Concen: 0.133 ng
 RT: 5.305 min Scan# 308
 Delta R.T. 0.000 min
 Lab File: BN037623.D
 Acq: 20 Aug 2025 07:13

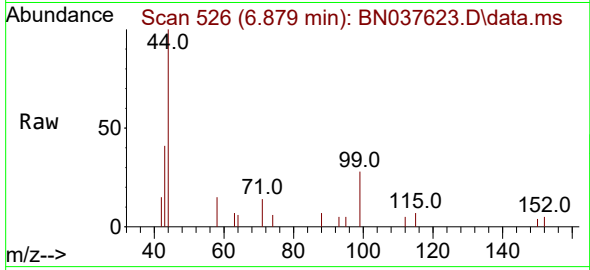
Tgt Ion: 112 Resp: 640
 Ion Ratio Lower Upper
 112 100
 64 56.1 44.9 67.3
 63 31.3 23.4 35.2





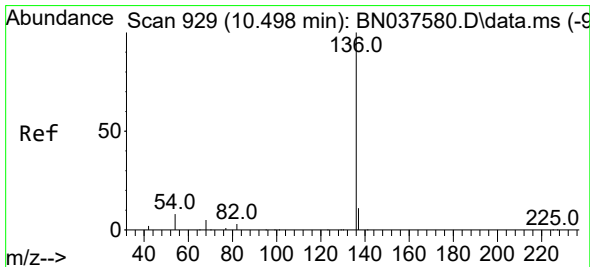
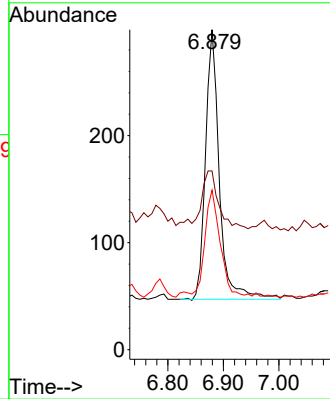
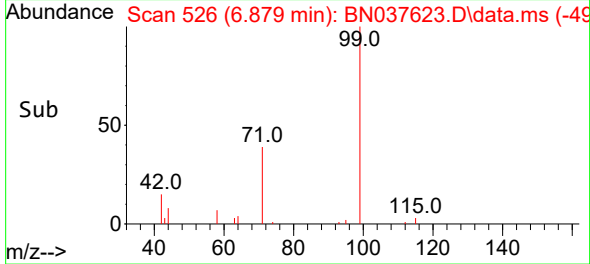
#5
 Phenol-d6
 Concen: 0.075 ng
 RT: 6.879 min Scan# 51
 Delta R.T. 0.000 min
 Lab File: BN037623.D
 Acq: 20 Aug 2025 07:13

Instrument :
 BNA_N
 ClientSampleId :
 RW8-SP100-20250814

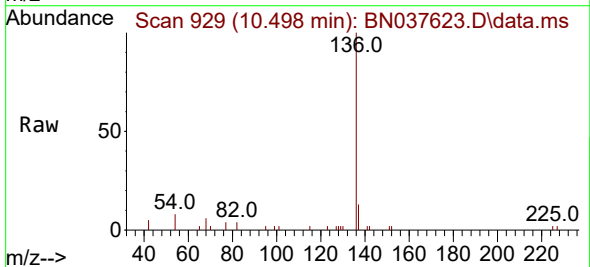


Tgt Ion: 99 Resp: 437

Ion	Ratio	Lower	Upper
99	100		
42	26.8	18.5	27.7
71	41.6	28.6	42.8

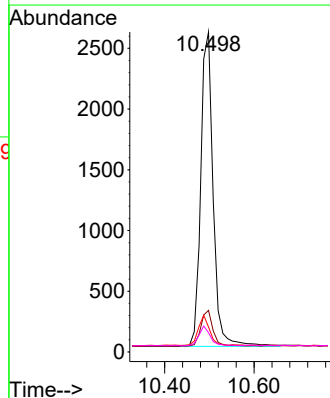
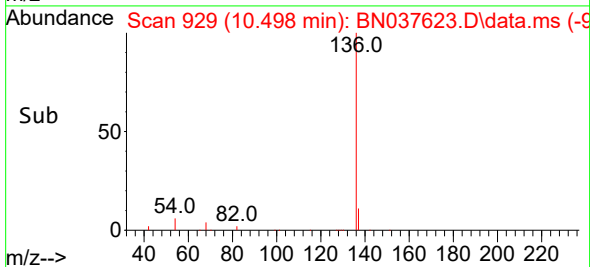


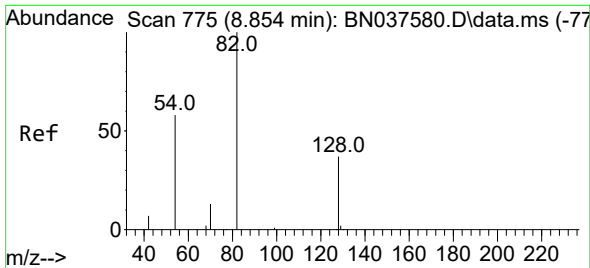
#7
 Naphthalene-d8
 Concen: 0.400 ng
 RT: 10.498 min Scan# 929
 Delta R.T. 0.000 min
 Lab File: BN037623.D
 Acq: 20 Aug 2025 07:13



Tgt Ion: 136 Resp: 4994

Ion	Ratio	Lower	Upper
136	100		
137	13.0	9.5	14.3
54	7.8	7.3	10.9
68	6.0	5.1	7.7

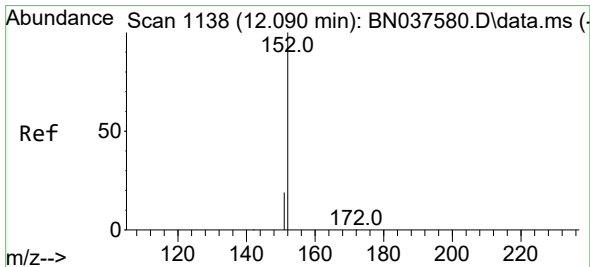
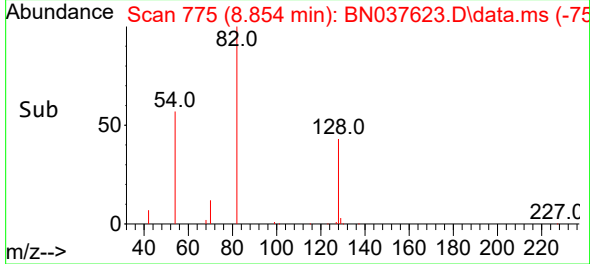
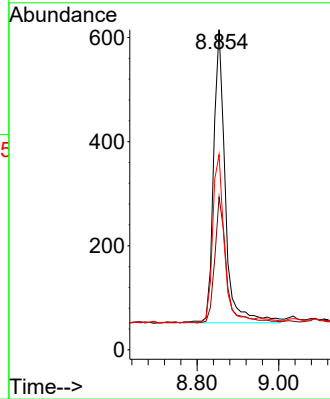
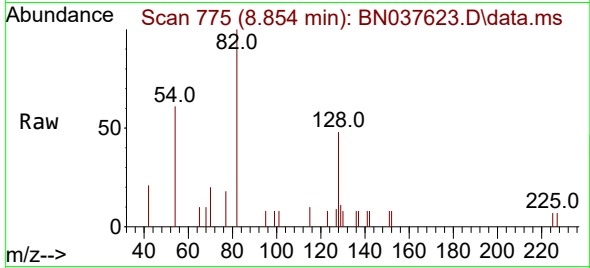




#8
 Nitrobenzene-d5
 Concen: 0.318 ng
 RT: 8.854 min Scan# 775
 Delta R.T. 0.000 min
 Lab File: BN037623.D
 Acq: 20 Aug 2025 07:13

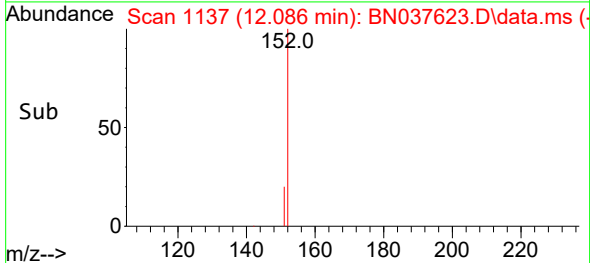
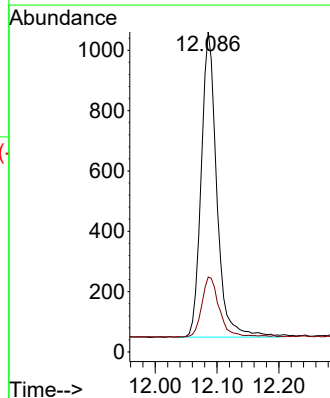
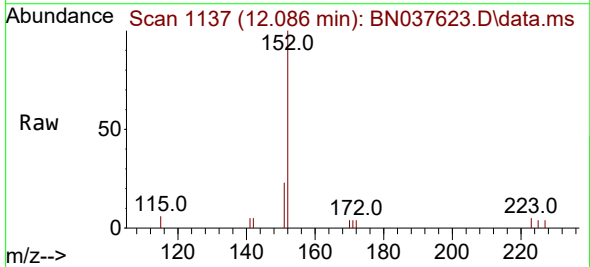
Instrument :
 BNA_N
 ClientSampleId :
 RW8-SP100-20250814

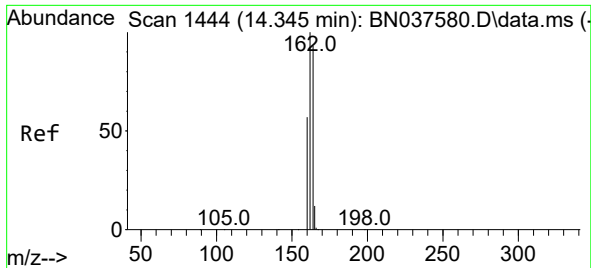
Tgt Ion	Resp	Lower	Upper
82	1120		
128	47.8	32.6	48.8
54	61.0	48.9	73.3



#11
 2-Methylnaphthalene-d10
 Concen: 0.261 ng
 RT: 12.086 min Scan# 1137
 Delta R.T. -0.005 min
 Lab File: BN037623.D
 Acq: 20 Aug 2025 07:13

Tgt Ion	Resp	Lower	Upper
152	1772		
151	22.1	17.3	25.9

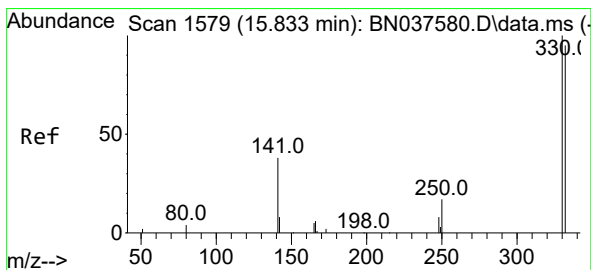
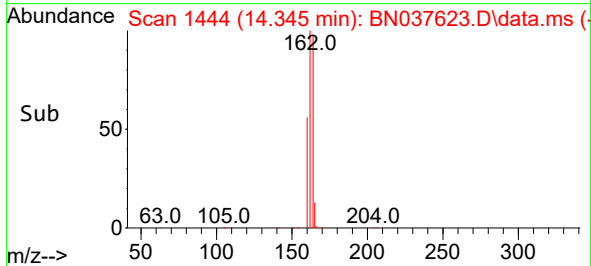
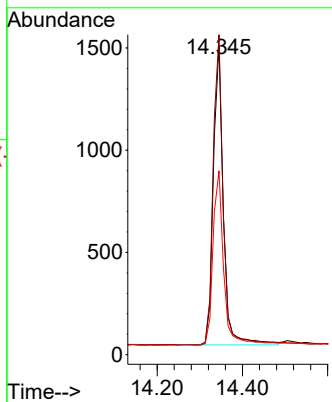
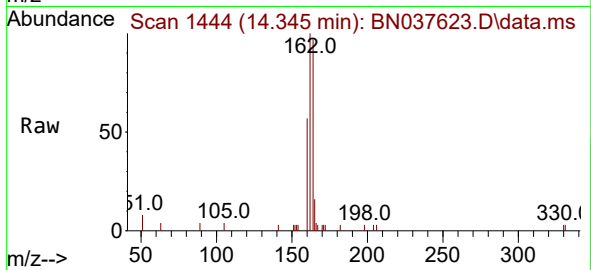




#13
 Acenaphthene-d10
 Concen: 0.400 ng
 RT: 14.345 min Scan# 14
 Delta R.T. 0.000 min
 Lab File: BN037623.D
 Acq: 20 Aug 2025 07:13

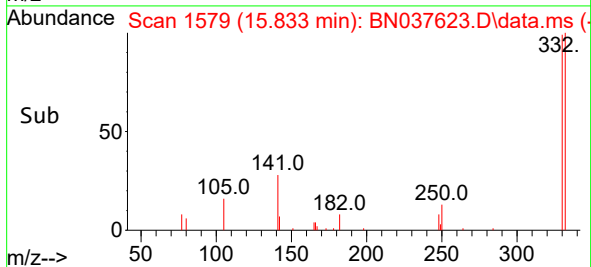
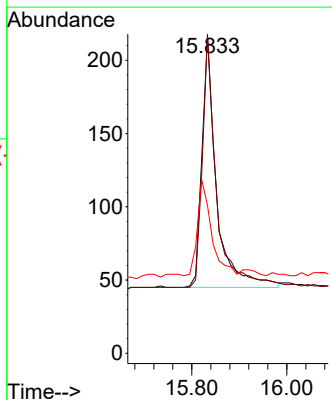
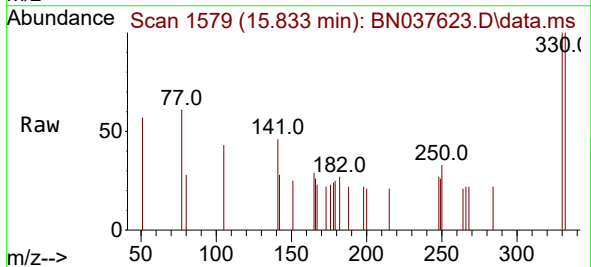
Instrument :
 BNA_N
 ClientSampleId :
 RW8-SP100-20250814

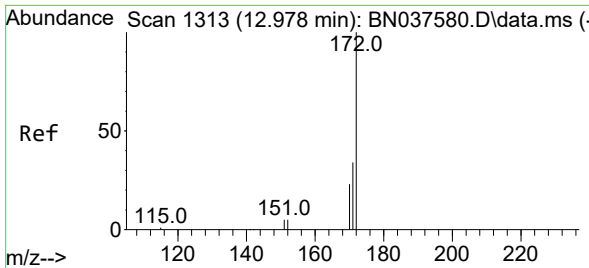
Tgt Ion	Resp	Lower	Upper
164	100		
162	103.4	85.5	128.3
160	59.4	49.5	74.3



#14
 2,4,6-Tribromophenol
 Concen: 0.350 ng
 RT: 15.833 min Scan# 1579
 Delta R.T. 0.000 min
 Lab File: BN037623.D
 Acq: 20 Aug 2025 07:13

Tgt Ion	Resp	Lower	Upper
330	100		
332	97.5	77.4	116.0
141	37.4	30.9	46.3



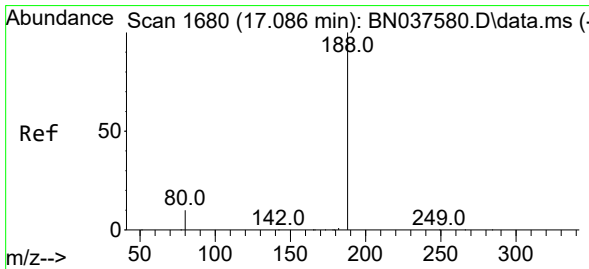
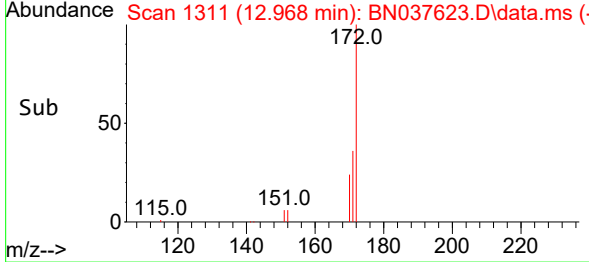
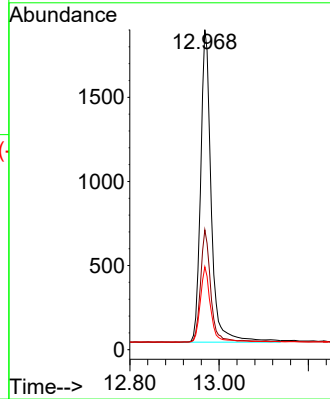
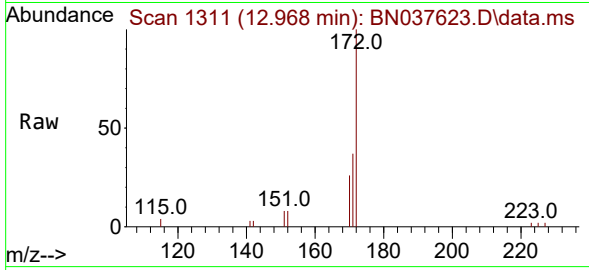


#15
 2-Fluorobiphenyl
 Concen: 0.308 ng
 RT: 12.968 min Scan# 11
 Delta R.T. -0.010 min
 Lab File: BN037623.D
 Acq: 20 Aug 2025 07:13

Instrument :
 BNA_N
 ClientSampleId :
 RW8-SP100-20250814

Tgt Ion:172 Resp: 4248

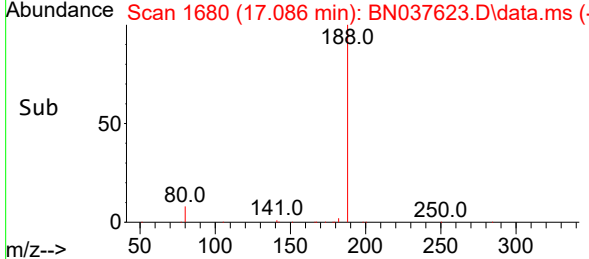
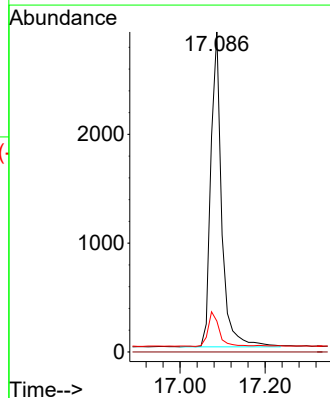
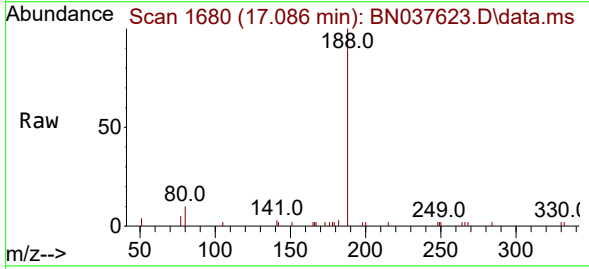
Ion	Ratio	Lower	Upper
172	100		
171	37.4	28.2	42.4
170	25.9	19.2	28.8

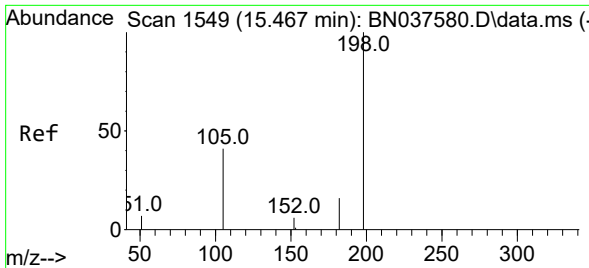


#19
 Phenanthrene-d10
 Concen: 0.400 ng
 RT: 17.086 min Scan# 1680
 Delta R.T. 0.000 min
 Lab File: BN037623.D
 Acq: 20 Aug 2025 07:13

Tgt Ion:188 Resp: 5113

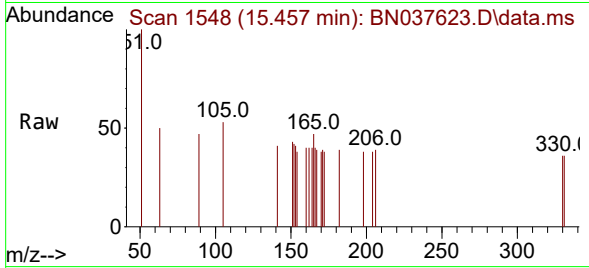
Ion	Ratio	Lower	Upper
188	100		
94	0.0	0.0	0.0
80	9.7	9.1	13.7



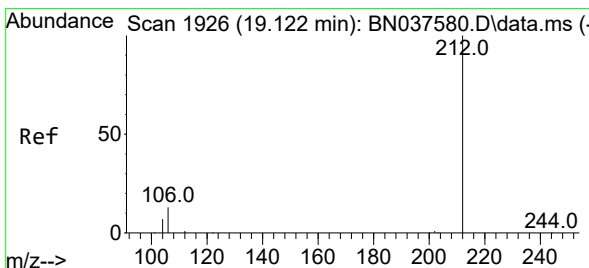
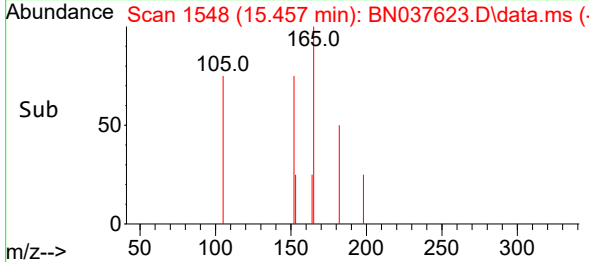
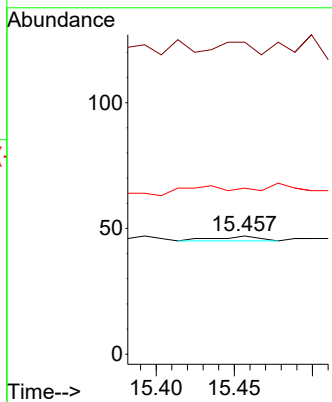


#20
 4,6-Dinitro-2-methylphenol
 Concen: 0.185 ng
 RT: 15.457 min Scan# 11
 Delta R.T. -0.010 min
 Lab File: BN037623.D
 Acq: 20 Aug 2025 07:13

Instrument :
 BNA_N
 ClientSampleId :
 RW8-SP100-20250814

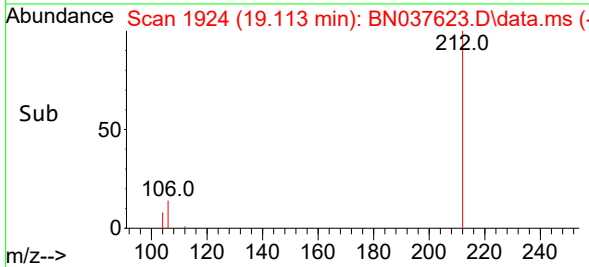
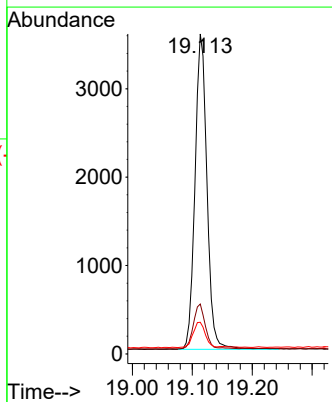
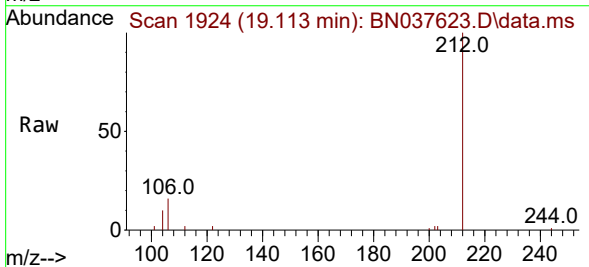


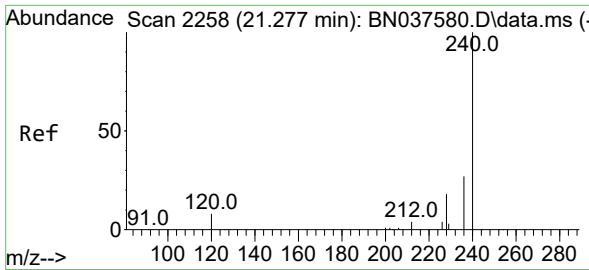
Tgt Ion:198 Resp: 4
 Ion Ratio Lower Upper
 198 100
 51 263.8 81.0 121.6#
 105 140.4 52.5 78.7#



#27
 Fluoranthene-d10
 Concen: 0.368 ng
 RT: 19.113 min Scan# 1924
 Delta R.T. -0.009 min
 Lab File: BN037623.D
 Acq: 20 Aug 2025 07:13

Tgt Ion:212 Resp: 4954
 Ion Ratio Lower Upper
 212 100
 106 14.3 11.5 17.3
 104 8.1 6.6 9.8



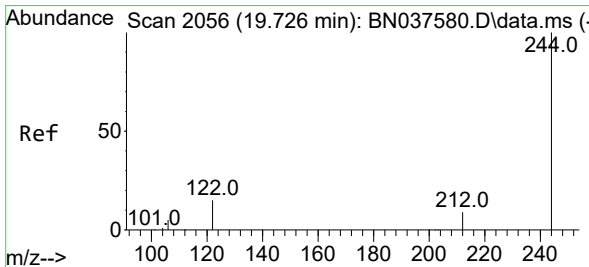
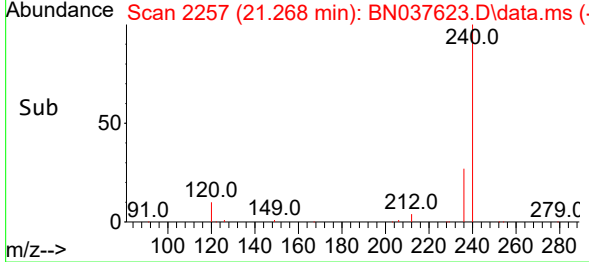
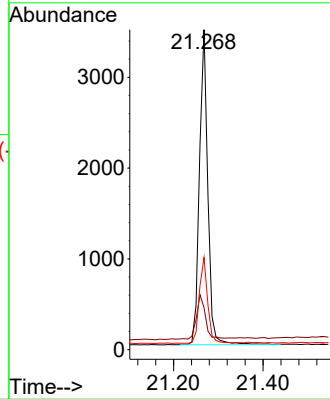
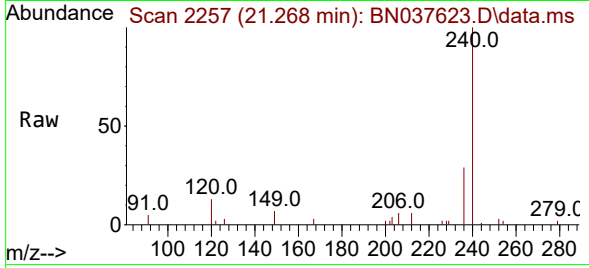


#29
 Chrysene-d12
 Concen: 0.400 ng
 RT: 21.268 min Scan# 21
 Delta R.T. -0.009 min
 Lab File: BN037623.D
 Acq: 20 Aug 2025 07:13

Instrument :
 BNA_N
 ClientSampleId :
 RW8-SP100-20250814

Tgt Ion:240 Resp: 4521

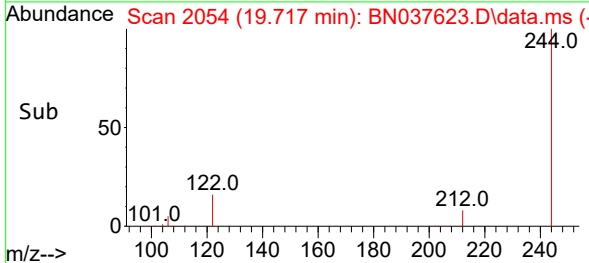
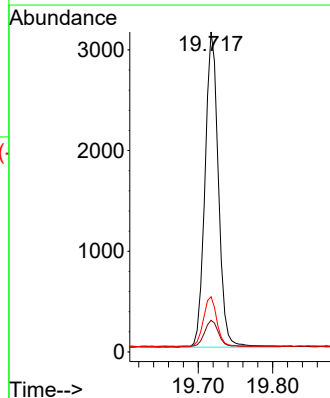
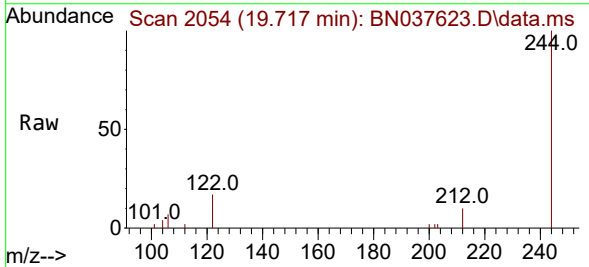
Ion	Ratio	Lower	Upper
240	100		
120	13.1	8.9	13.3
236	28.8	22.6	33.8

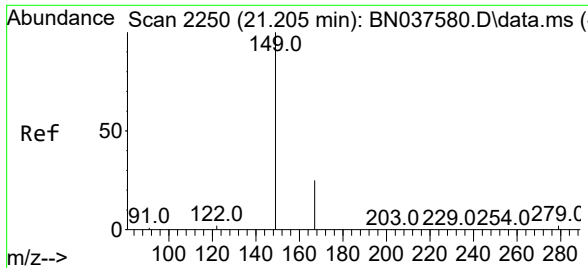


#31
 Terphenyl-d14
 Concen: 0.422 ng
 RT: 19.717 min Scan# 2054
 Delta R.T. -0.009 min
 Lab File: BN037623.D
 Acq: 20 Aug 2025 07:13

Tgt Ion:244 Resp: 3923

Ion	Ratio	Lower	Upper
244	100		
212	9.9	8.2	12.2
122	17.3	13.2	19.8

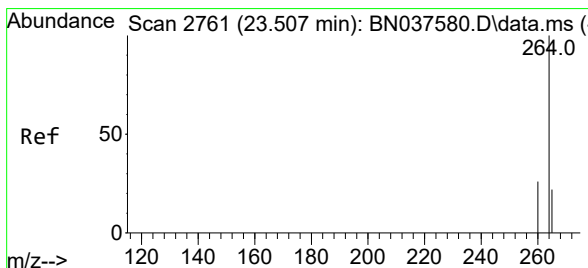
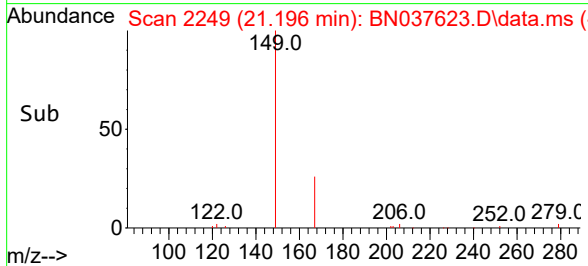
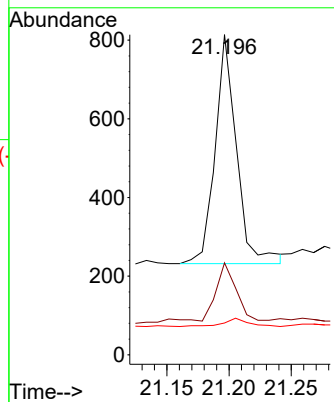
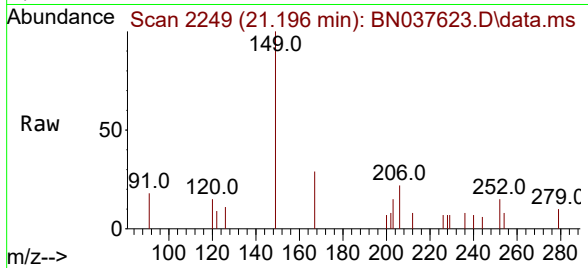




#34
 Bis(2-ethylhexyl)phthalate
 Concen: 0.112 ng
 RT: 21.196 min Scan# 21
 Delta R.T. -0.009 min
 Lab File: BN037623.D
 Acq: 20 Aug 2025 07:13

Instrument :
 BNA_N
 ClientSampleId :
 RW8-SP100-20250814

Tgt Ion	Resp	Lower	Upper
149	100		
167	26.7	20.5	30.7
279	4.2	2.6	4.0



#35
 Perylene-d12
 Concen: 0.400 ng
 RT: 23.499 min Scan# 2758
 Delta R.T. -0.009 min
 Lab File: BN037623.D
 Acq: 20 Aug 2025 07:13

Tgt Ion	Resp	Lower	Upper
264	100		
260	26.5	21.6	32.4
265	74.8	48.2	72.4

