

Data Path : Z:\svoasrv\HPCHEM1\BNA\_N\Data\BN081925\  
 Data File : BN037624.D  
 Acq On : 20 Aug 2025 07:49  
 Operator : RC/JU  
 Sample : Q2881-02  
 Misc :  
 ALS Vial : 25 Sample Multiplier: 1

Instrument :  
 BNA\_N  
 ClientSampleId :  
 RW8-SP303-20250814

Quant Time: Aug 20 08:17:16 2025  
 Quant Method : Z:\svoasrv\HPCHEM1\BNA\_N\Methods\8270-SIM-BN081225.M  
 Quant Title : ASP BNA STANDARDS FOR 5 POINT CALIBRATION  
 QLast Update : Wed Aug 13 05:00:58 2025  
 Response via : Initial Calibration

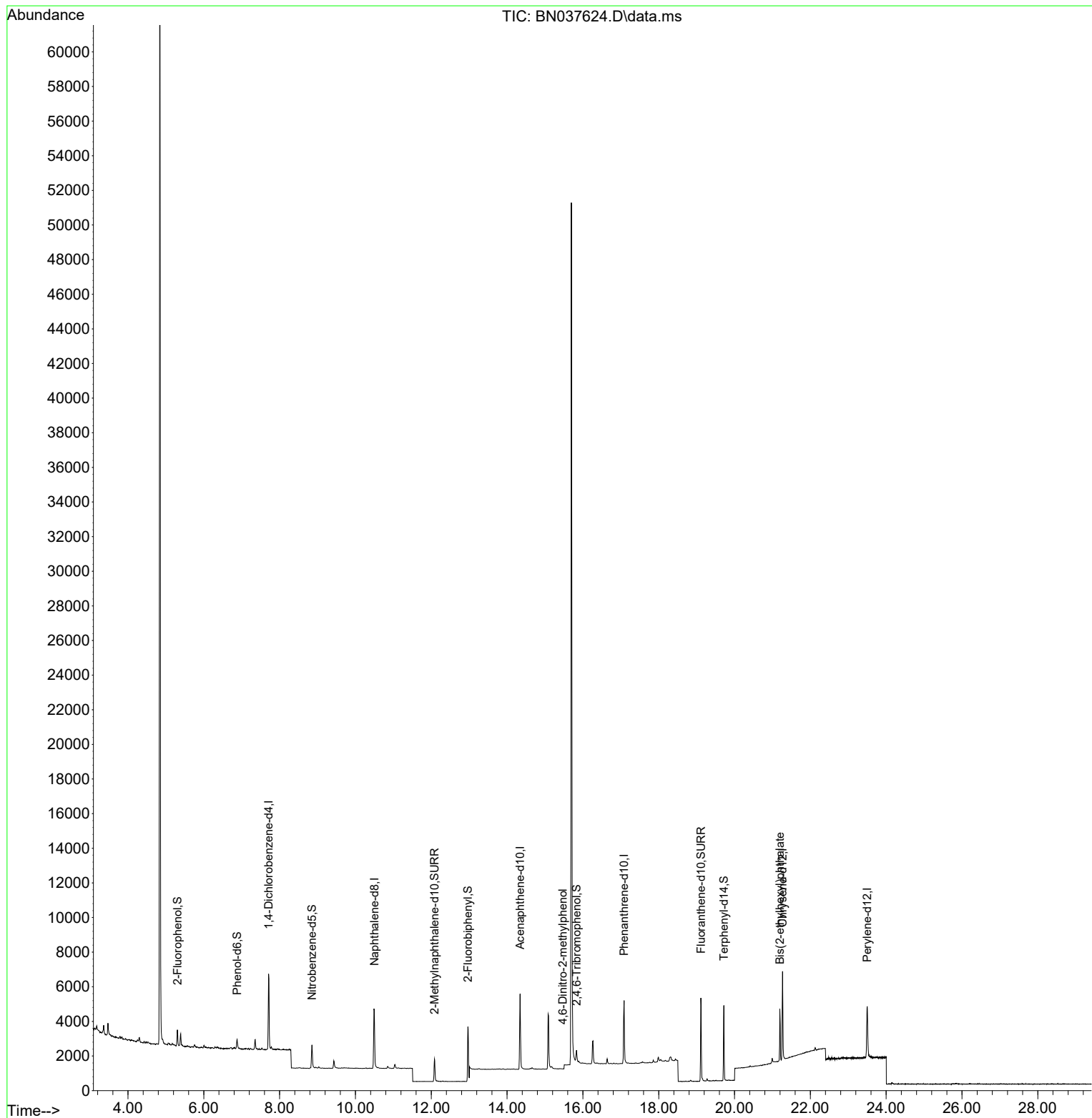
Compound	R.T.	QIon	Response	Conc	Units	Dev(Min)
Internal Standards						
1) 1,4-Dichlorobenzene-d4	7.710	152	2203	0.400	ng	0.00
7) Naphthalene-d8	10.498	136	5181	0.400	ng	0.00
13) Acenaphthene-d10	14.345	164	2518	0.400	ng	0.00
19) Phenanthrene-d10	17.086	188	5410	0.400	ng	# 0.00
29) Chrysene-d12	21.268	240	4670	0.400	ng	# 0.00
35) Perylene-d12	23.502	264	4150	0.400	ng	# 0.00
System Monitoring Compounds						
4) 2-Fluorophenol	5.305	112	706	0.141	ng	0.00
5) Phenol-d6	6.879	99	485	0.081	ng	0.00
8) Nitrobenzene-d5	8.854	82	1190	0.326	ng	0.00
11) 2-Methylnaphthalene-d10	12.085	152	1900	0.270	ng	0.00
14) 2,4,6-Tribromophenol	15.833	330	382	0.347	ng	0.00
15) 2-Fluorobiphenyl	12.968	172	4349	0.299	ng	0.00
27) Fluoranthene-d10	19.113	212	5272	0.370	ng	0.00
31) Terphenyl-d14	19.717	244	4123	0.429	ng	0.00
Target Compounds						
20) 4,6-Dinitro-2-methylph...	15.467	198	1	0.182	ng	# 1
34) Bis(2-ethylhexyl)phtha...	21.196	149	2684	0.417	ng	99

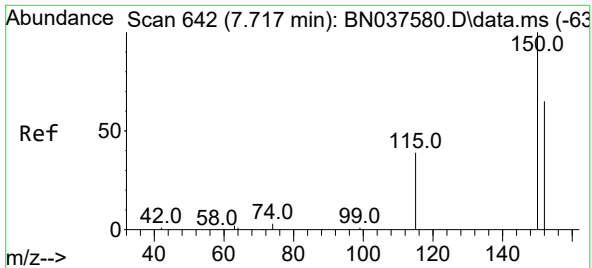
(#) = qualifier out of range (m) = manual integration (+) = signals summed

Data Path : Z:\svoasrv\HPCHEM1\BNA\_N\Data\BN081925\  
Data File : BN037624.D  
Acq On : 20 Aug 2025 07:49  
Operator : RC/JU  
Sample : Q2881-02  
Misc :  
ALS Vial : 25 Sample Multiplier: 1

Instrument :  
BNA\_N  
ClientSampleId :  
RW8-SP303-20250814

Quant Time: Aug 20 08:17:16 2025  
Quant Method : Z:\svoasrv\HPCHEM1\BNA\_N\Methods\8270-SIM-BN081225.M  
Quant Title : ASP BNA STANDARDS FOR 5 POINT CALIBRATION  
QLast Update : Wed Aug 13 05:00:58 2025  
Response via : Initial Calibration



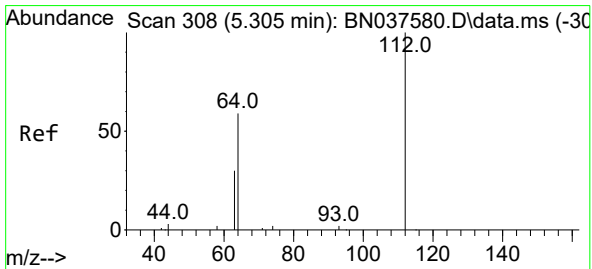
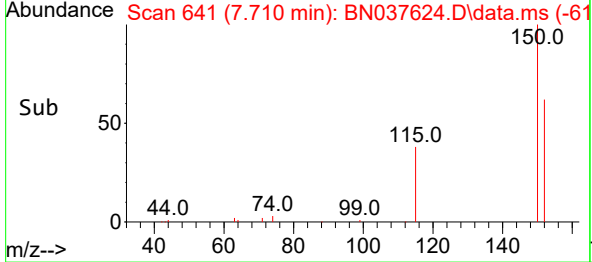
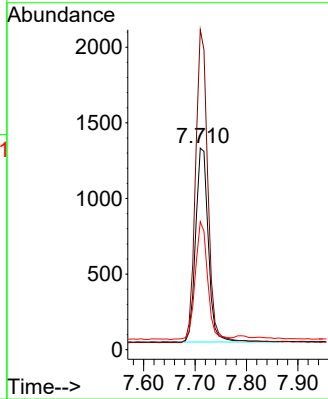
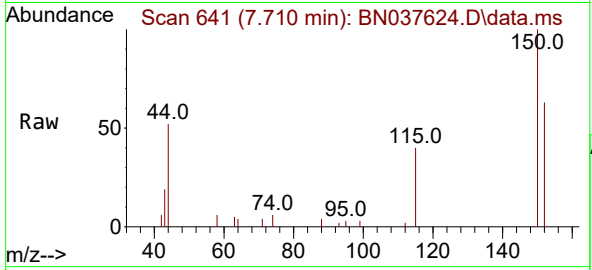


#1  
 1,4-Dichlorobenzene-d4  
 Concen: 0.400 ng  
 RT: 7.710 min Scan# 641  
 Delta R.T. -0.007 min  
 Lab File: BN037624.D  
 Acq: 20 Aug 2025 07:49

Instrument :  
 BNA\_N  
 ClientSampleId :  
 RW8-SP303-20250814

Tgt Ion:152 Resp: 2203

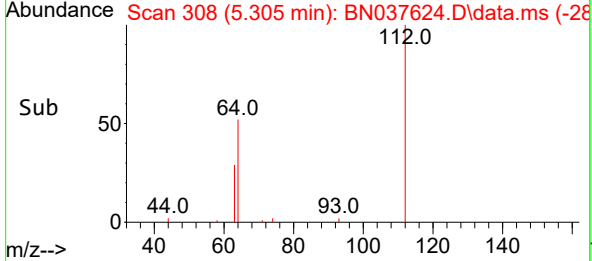
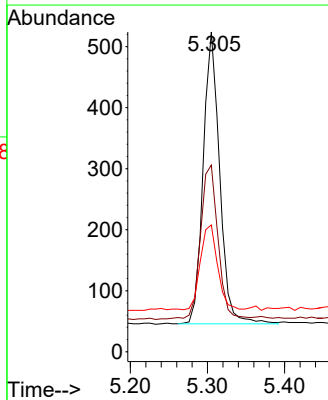
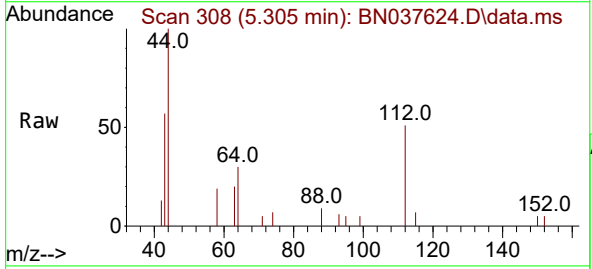
Ion	Ratio	Lower	Upper
152	100		
150	158.7	122.2	183.4
115	63.5	49.8	74.6

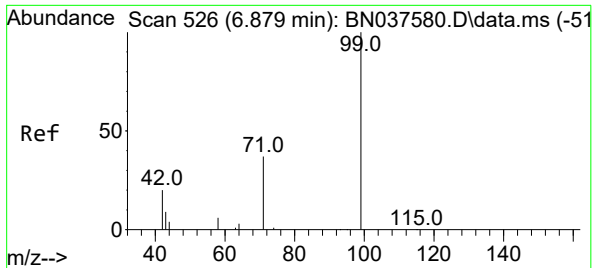


#4  
 2-Fluorophenol  
 Concen: 0.141 ng  
 RT: 5.305 min Scan# 308  
 Delta R.T. 0.000 min  
 Lab File: BN037624.D  
 Acq: 20 Aug 2025 07:49

Tgt Ion:112 Resp: 706

Ion	Ratio	Lower	Upper
112	100		
64	56.4	44.9	67.3
63	30.7	23.4	35.2



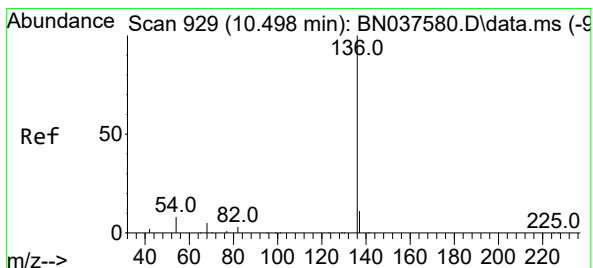
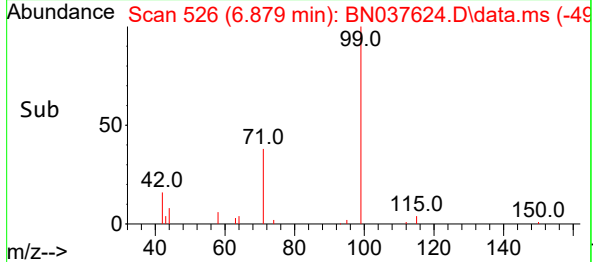
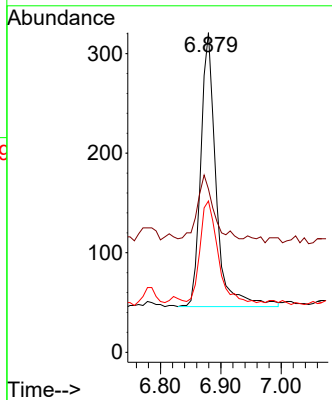
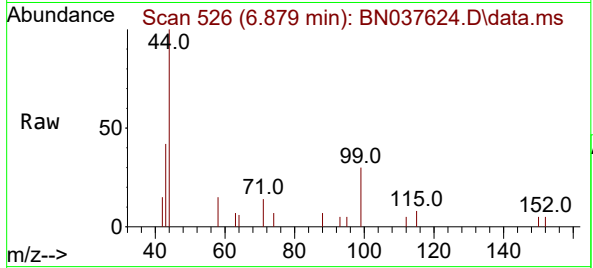


#5  
 Phenol-d6  
 Concen: 0.081 ng  
 RT: 6.879 min Scan# 51  
 Delta R.T. 0.000 min  
 Lab File: BN037624.D  
 Acq: 20 Aug 2025 07:49

Instrument :  
 BNA\_N  
 ClientSampleId :  
 RW8-SP303-20250814

Tgt Ion: 99 Resp: 485

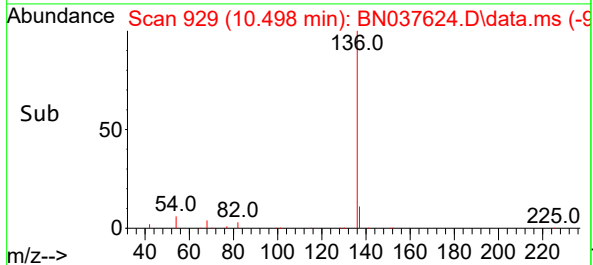
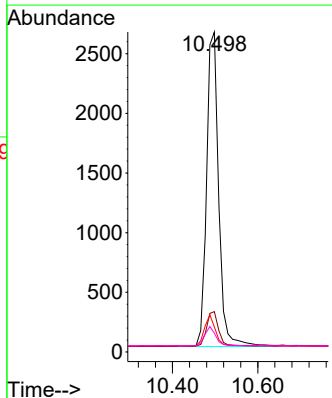
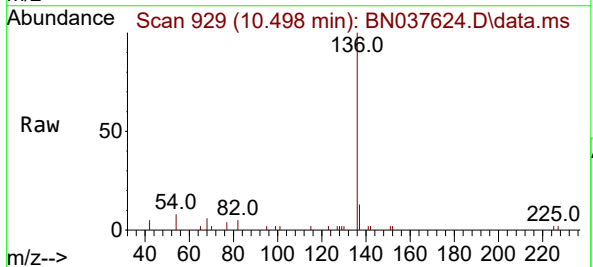
Ion	Ratio	Lower	Upper
99	100		
42	27.8	18.5	27.7#
71	46.6	28.6	42.8#

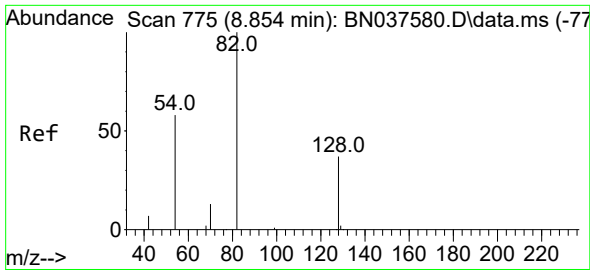


#7  
 Naphthalene-d8  
 Concen: 0.400 ng  
 RT: 10.498 min Scan# 929  
 Delta R.T. 0.000 min  
 Lab File: BN037624.D  
 Acq: 20 Aug 2025 07:49

Tgt Ion: 136 Resp: 5181

Ion	Ratio	Lower	Upper
136	100		
137	12.6	9.5	14.3
54	7.8	7.3	10.9
68	5.9	5.1	7.7



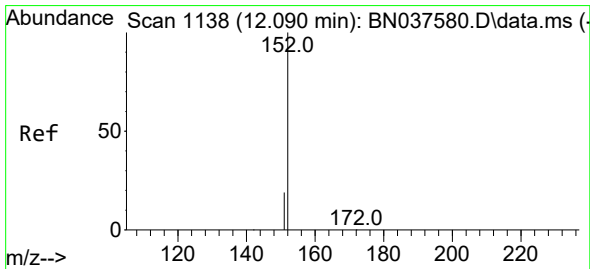
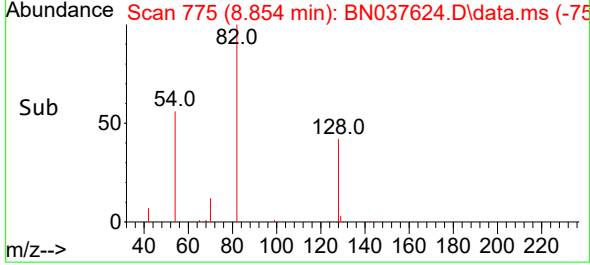
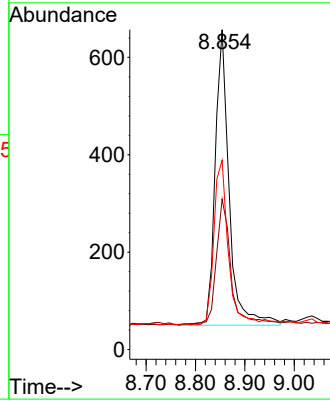
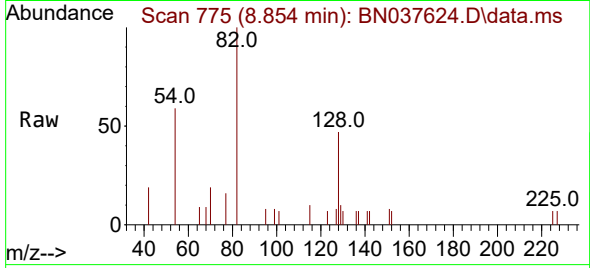


#8  
 Nitrobenzene-d5  
 Concen: 0.326 ng  
 RT: 8.854 min Scan# 775  
 Delta R.T. 0.000 min  
 Lab File: BN037624.D  
 Acq: 20 Aug 2025 07:49

Instrument :  
 BNA\_N  
 ClientSampleId :  
 RW8-SP303-20250814

Tgt Ion: 82 Resp: 1190

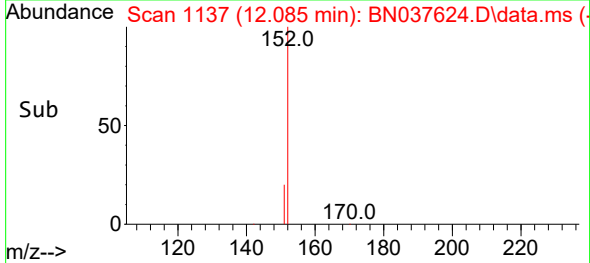
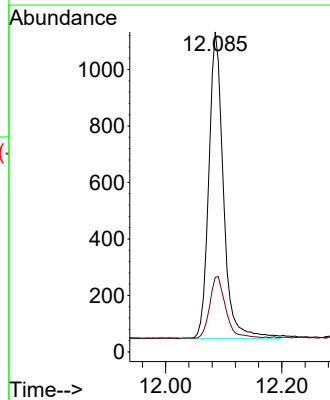
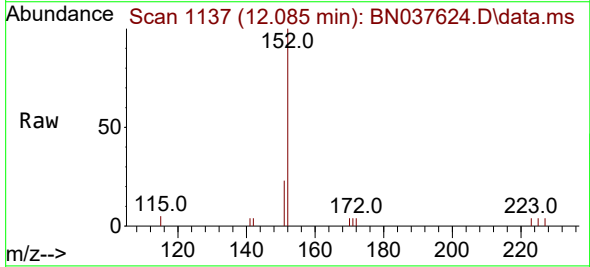
Ion	Ratio	Lower	Upper
82	100		
128	47.0	32.6	48.8
54	59.2	48.9	73.3

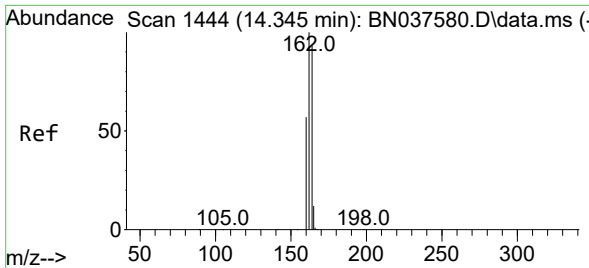


#11  
 2-Methylnaphthalene-d10  
 Concen: 0.270 ng  
 RT: 12.085 min Scan# 1137  
 Delta R.T. -0.005 min  
 Lab File: BN037624.D  
 Acq: 20 Aug 2025 07:49

Tgt Ion: 152 Resp: 1900

Ion	Ratio	Lower	Upper
152	100		
151	21.7	17.3	25.9

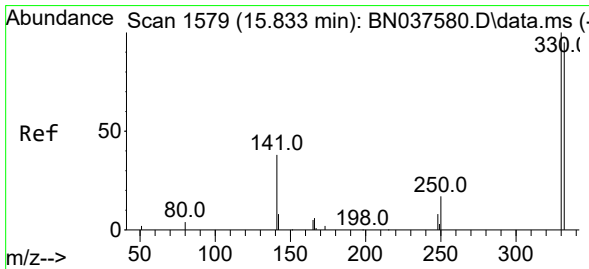
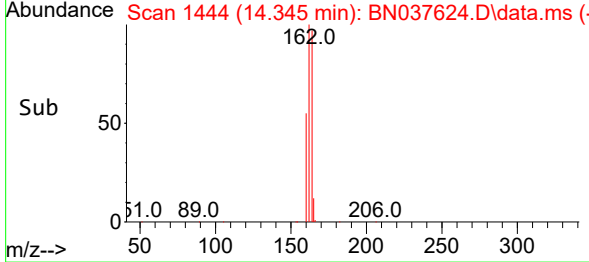
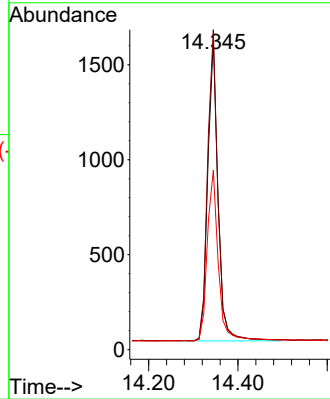
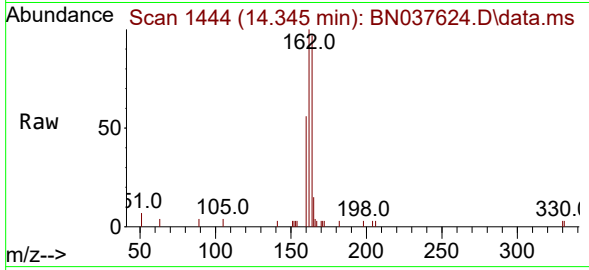




#13  
 Acenaphthene-d10  
 Concen: 0.400 ng  
 RT: 14.345 min Scan# 14  
 Delta R.T. 0.000 min  
 Lab File: BN037624.D  
 Acq: 20 Aug 2025 07:49

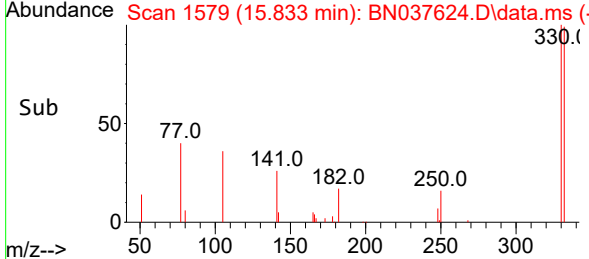
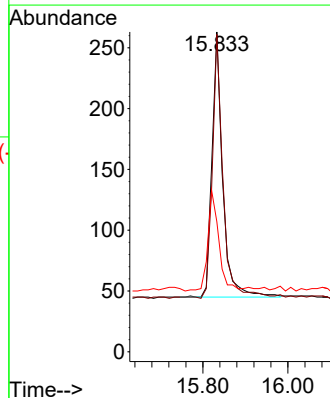
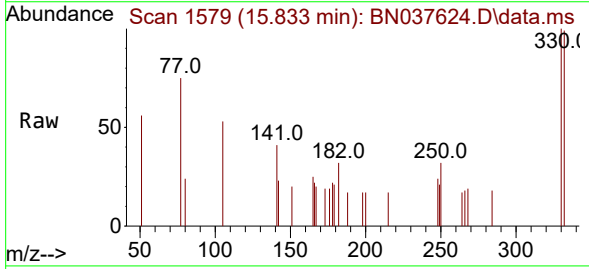
Instrument :  
 BNA\_N  
 ClientSampleId :  
 RW8-SP303-20250814

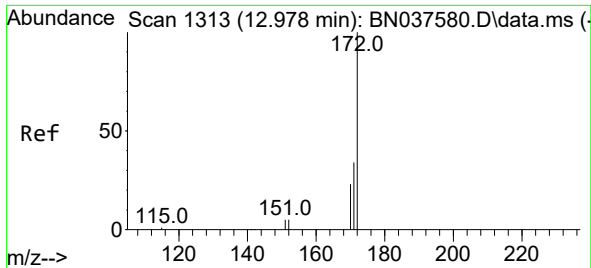
Tgt Ion	Resp	Lower	Upper
164	100		
162	103.2	85.5	128.3
160	57.8	49.5	74.3



#14  
 2,4,6-Tribromophenol  
 Concen: 0.347 ng  
 RT: 15.833 min Scan# 1579  
 Delta R.T. 0.000 min  
 Lab File: BN037624.D  
 Acq: 20 Aug 2025 07:49

Tgt Ion	Resp	Lower	Upper
330	100		
332	95.3	77.4	116.0
141	39.0	30.9	46.3



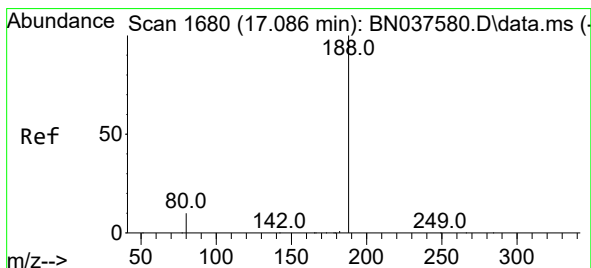
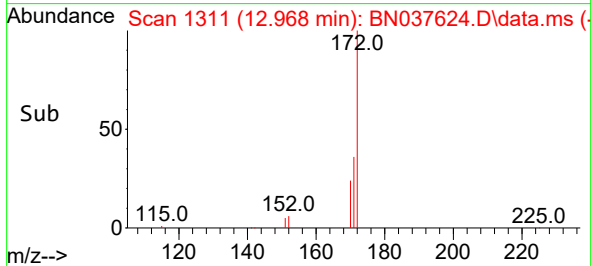
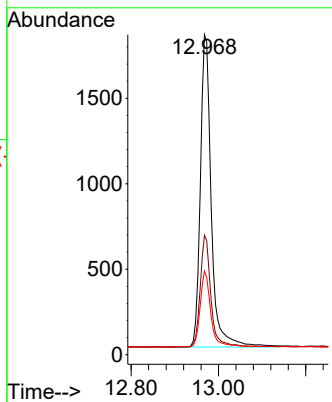
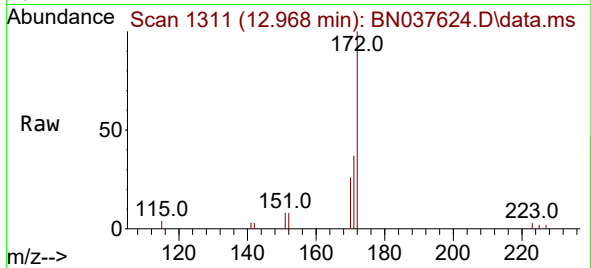


#15  
 2-Fluorobiphenyl  
 Concen: 0.299 ng  
 RT: 12.968 min Scan# 11  
 Delta R.T. -0.010 min  
 Lab File: BN037624.D  
 Acq: 20 Aug 2025 07:49

Instrument :  
 BNA\_N  
 ClientSampleId :  
 RW8-SP303-20250814

Tgt Ion:172 Resp: 4349

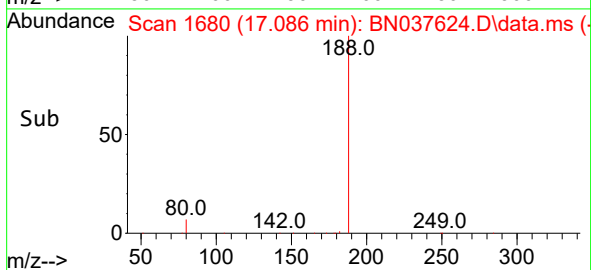
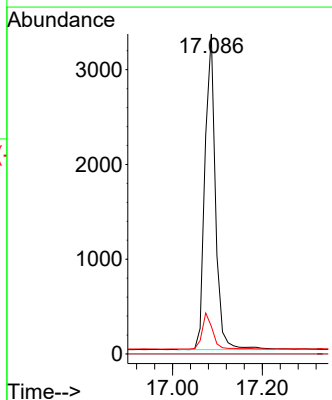
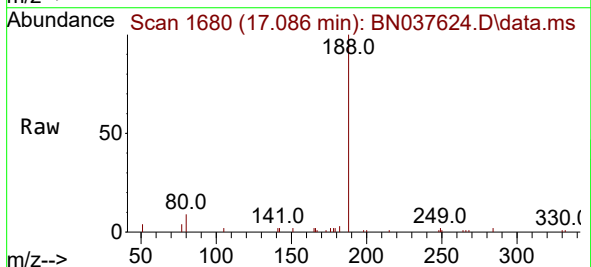
Ion	Ratio	Lower	Upper
172	100		
171	37.3	28.2	42.4
170	26.2	19.2	28.8

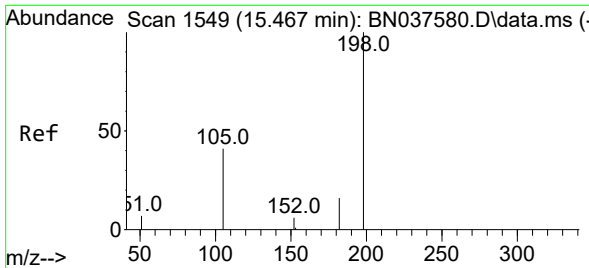


#19  
 Phenanthrene-d10  
 Concen: 0.400 ng  
 RT: 17.086 min Scan# 1680  
 Delta R.T. 0.000 min  
 Lab File: BN037624.D  
 Acq: 20 Aug 2025 07:49

Tgt Ion:188 Resp: 5410

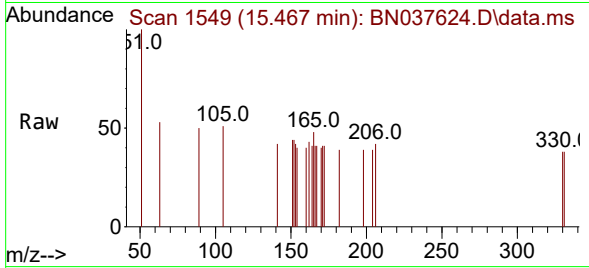
Ion	Ratio	Lower	Upper
188	100		
94	0.0	0.0	0.0
80	8.6	9.1	13.7#



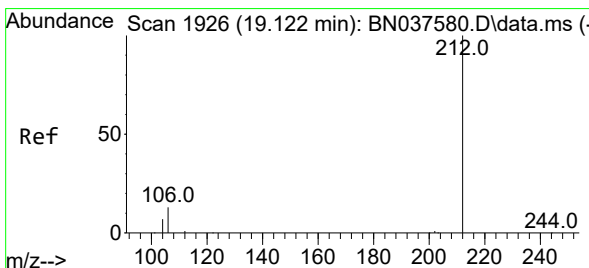
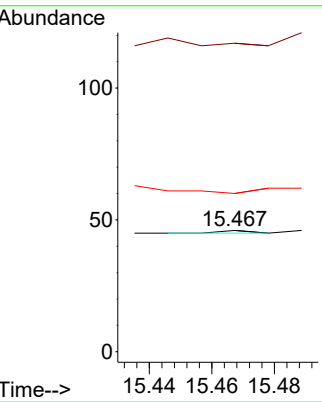
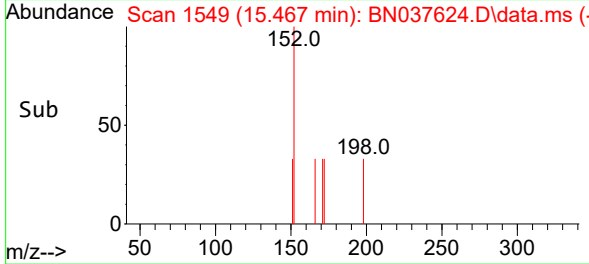


#20  
 4,6-Dinitro-2-methylphenol  
 Concen: 0.182 ng  
 RT: 15.467 min Scan# 11  
 Delta R.T. 0.000 min  
 Lab File: BN037624.D  
 Acq: 20 Aug 2025 07:49

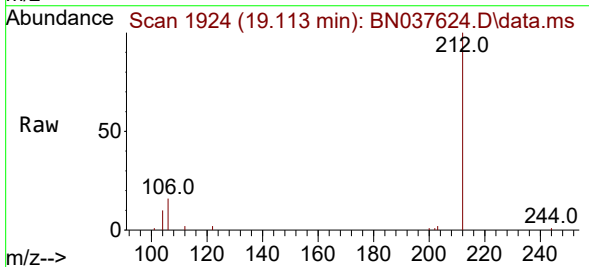
Instrument :  
 BNA\_N  
 ClientSampleId :  
 RW8-SP303-20250814



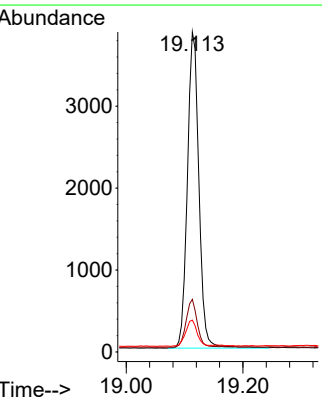
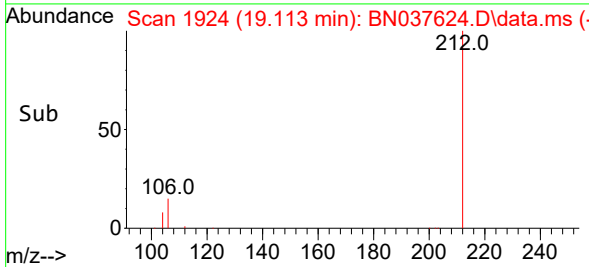
Tgt Ion:198 Resp: 1  
 Ion Ratio Lower Upper  
 198 100  
 51 254.3 81.0 121.6#  
 105 130.4 52.5 78.7#



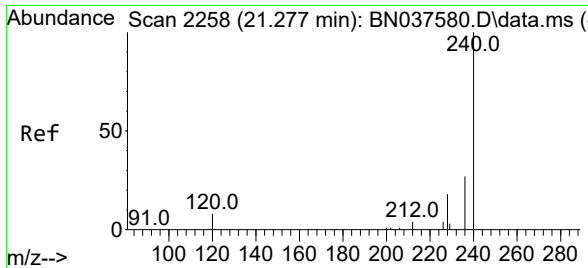
#27  
 Fluoranthene-d10  
 Concen: 0.370 ng  
 RT: 19.113 min Scan# 1924  
 Delta R.T. -0.009 min  
 Lab File: BN037624.D  
 Acq: 20 Aug 2025 07:49



Tgt Ion:212 Resp: 5272  
 Ion Ratio Lower Upper  
 212 100  
 106 15.0 11.5 17.3  
 104 8.4 6.6 9.8





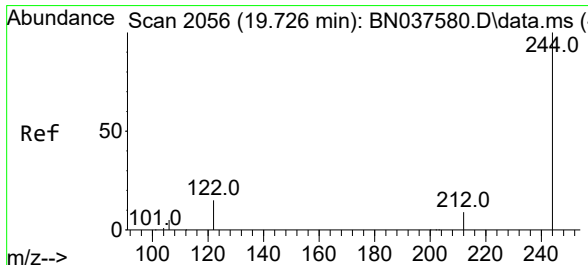
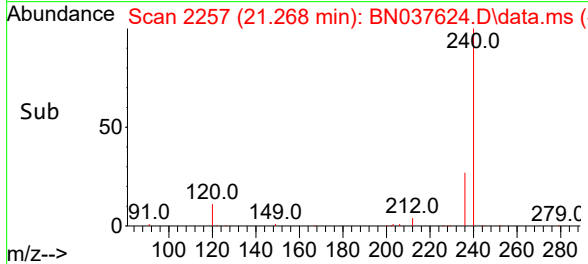
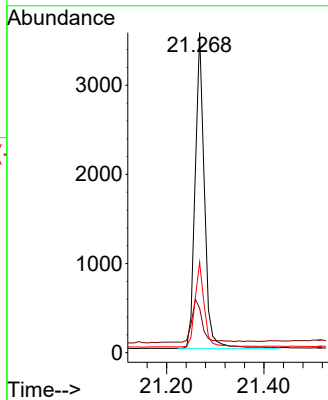
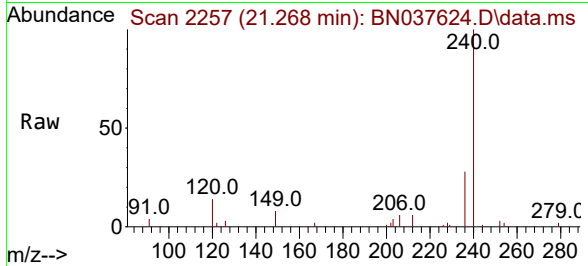


#29  
 Chrysene-d12  
 Concen: 0.400 ng  
 RT: 21.268 min Scan# 21  
 Delta R.T. -0.009 min  
 Lab File: BN037624.D  
 Acq: 20 Aug 2025 07:49

Instrument :  
 BNA\_N  
 ClientSampleId :  
 RW8-SP303-20250814

Tgt Ion:240 Resp: 4670

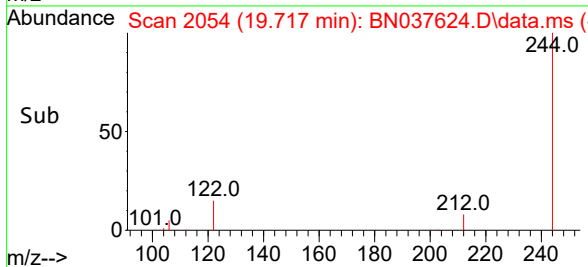
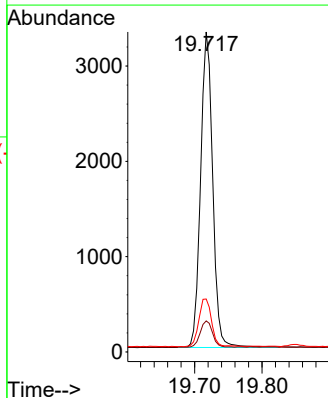
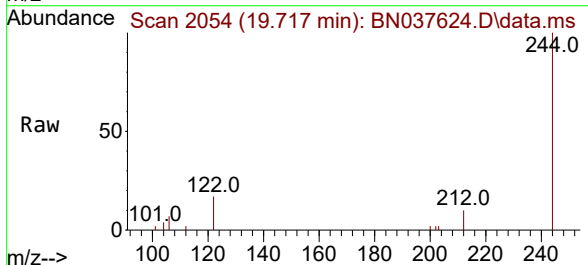
Ion	Ratio	Lower	Upper
240	100		
120	13.9	8.9	13.3#
236	28.2	22.6	33.8

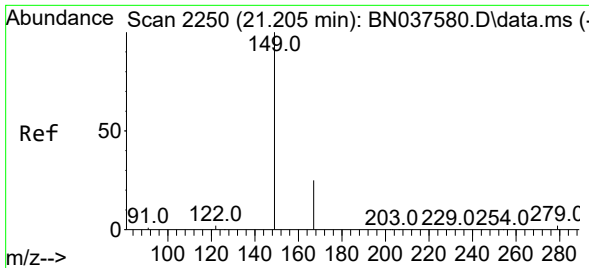


#31  
 Terphenyl-d14  
 Concen: 0.429 ng  
 RT: 19.717 min Scan# 2054  
 Delta R.T. -0.009 min  
 Lab File: BN037624.D  
 Acq: 20 Aug 2025 07:49

Tgt Ion:244 Resp: 4123

Ion	Ratio	Lower	Upper
244	100		
212	9.7	8.2	12.2
122	16.6	13.2	19.8

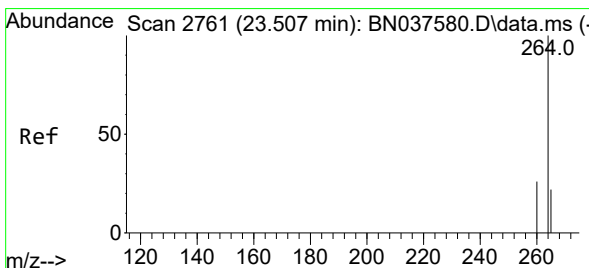
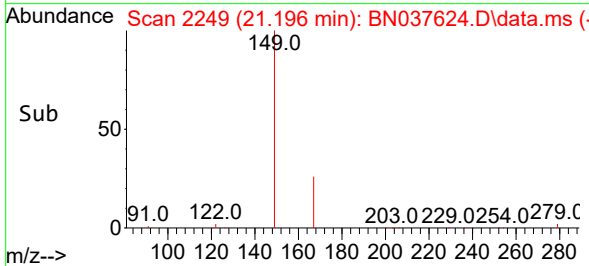
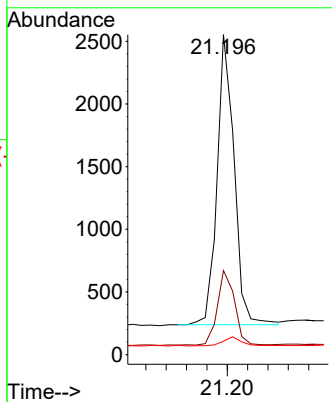
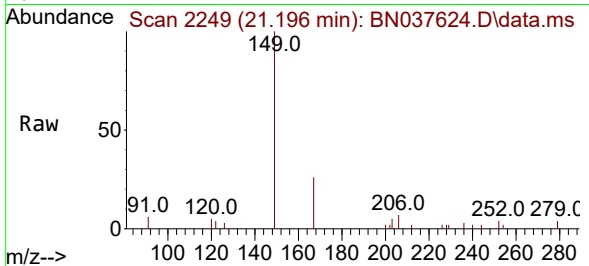




#34  
 Bis(2-ethylhexyl)phthalate  
 Concen: 0.417 ng  
 RT: 21.196 min Scan# 211  
 Delta R.T. -0.009 min  
 Lab File: BN037624.D  
 Acq: 20 Aug 2025 07:49

Instrument : BNA\_N  
 ClientSampleId : RW8-SP303-20250814

Tgt Ion	Resp	Lower	Upper
149	100		
167	25.9	20.5	30.7
279	3.7	2.6	4.0



#35  
 Perylene-d12  
 Concen: 0.400 ng  
 RT: 23.502 min Scan# 2759  
 Delta R.T. -0.006 min  
 Lab File: BN037624.D  
 Acq: 20 Aug 2025 07:49

Tgt Ion	Resp	Lower	Upper
264	100		
260	27.2	21.6	32.4
265	77.3	48.2	72.4#

