

Data Path : Z:\svoasrv\HPCHEM1\BNA\_N\Data\BN081925\  
 Data File : BN037629.D  
 Acq On : 20 Aug 2025 10:49  
 Operator : RC/JU  
 Sample : Q2878-05DL 20X  
 Misc :  
 ALS Vial : 30 Sample Multiplier: 1

Instrument :  
 BNA\_N  
 ClientSampleId :  
 MW-11A-37.5-081425DL

Quant Time: Aug 21 04:13:34 2025  
 Quant Method : Z:\svoasrv\HPCHEM1\BNA\_N\Methods\8270-SIM-BN081225.M  
 Quant Title : ASP BNA STANDARDS FOR 5 POINT CALIBRATION  
 QLast Update : Wed Aug 13 05:00:58 2025  
 Response via : Initial Calibration

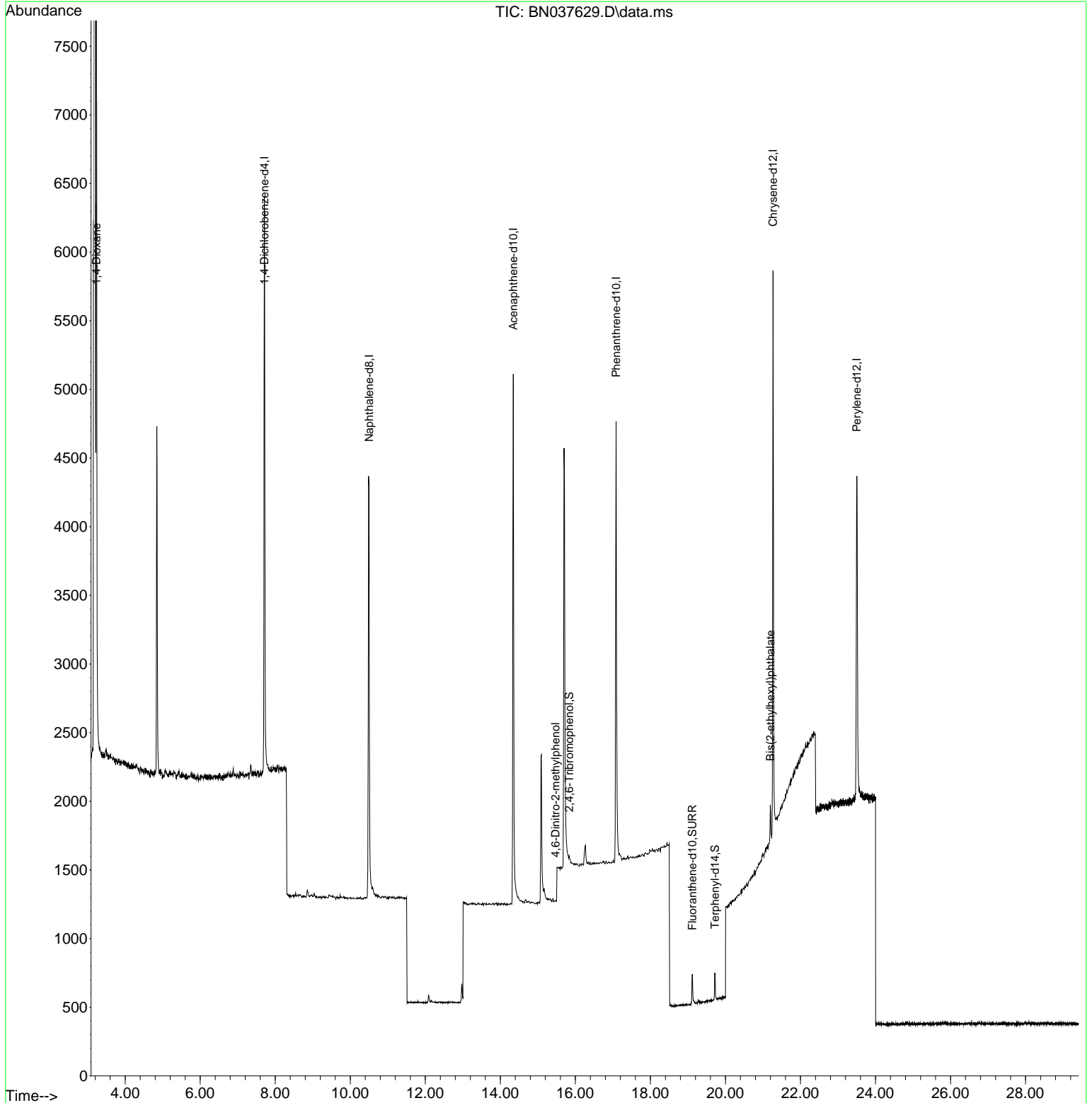
Compound	R.T.	QIon	Response	Conc Units	Dev(Min)
Internal Standards					
1) 1,4-Dichlorobenzene-d4	7.710	152	2132	0.400 ng	0.00
7) Naphthalene-d8	10.498	136	4980	0.400 ng	0.00
13) Acenaphthene-d10	14.345	164	2455	0.400 ng	0.00
19) Phenanthrene-d10	17.086	188	5117	0.400 ng	0.00
29) Chrysene-d12	21.268	240	4012	0.400 ng	# 0.00
35) Perylene-d12	23.502	264	3548	0.400 ng	# 0.00
System Monitoring Compounds					
4) 2-Fluorophenol	5.305	112	43	0.009 ng	0.00
5) Phenol-d6	6.872	99	27	0.005 ng	0.00
8) Nitrobenzene-d5	8.854	82	54	0.015 ng	0.00
11) 2-Methylnaphthalene-d10	12.091	152	94	0.014 ng	0.00
14) 2,4,6-Tribromophenol	15.833	330	24	0.022 ng	0.00
15) 2-Fluorobiphenyl	12.973	172	212	0.015 ng	0.00
27) Fluoranthene-d10	19.113	212	288	0.021 ng	0.00
31) Terphenyl-d14	19.717	244	220	0.027 ng	0.00
Target Compounds					
2) 1,4-Dioxane	3.232	88	3017	1.479 ng	99
20) 4,6-Dinitro-2-methylph...	15.467	198	1	0.182 ng	# 1
34) Bis(2-ethylhexyl)phtha...	21.196	149	304	0.055 ng	# 92

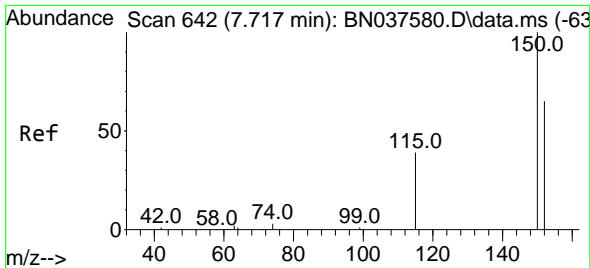
(#) = qualifier out of range (m) = manual integration (+) = signals summed

Data Path : Z:\svoasrv\HPCHEM1\BNA\_N\Data\BN081925\  
 Data File : BN037629.D  
 Acq On : 20 Aug 2025 10:49  
 Operator : RC/JU  
 Sample : Q2878-05DL 20X  
 Misc :  
 ALS Vial : 30 Sample Multiplier: 1

Instrument :  
 BNA\_N  
 ClientSampleId :  
 MW-11A-37.5-081425DL

Quant Time: Aug 21 04:13:34 2025  
 Quant Method : Z:\svoasrv\HPCHEM1\BNA\_N\Methods\8270-SIM-BN081225.M  
 Quant Title : ASP BNA STANDARDS FOR 5 POINT CALIBRATION  
 QLast Update : Wed Aug 13 05:00:58 2025  
 Response via : Initial Calibration



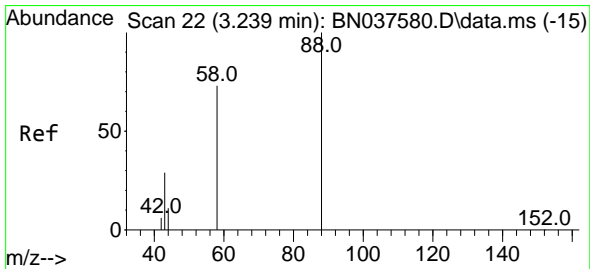
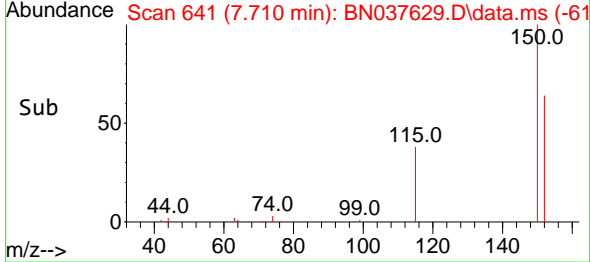
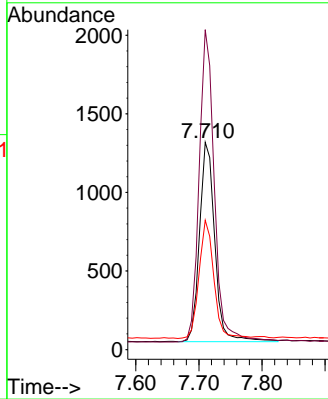
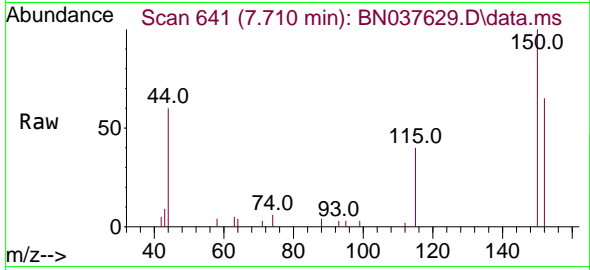


#1  
 1,4-Dichlorobenzene-d4  
 Concen: 0.400 ng  
 RT: 7.710 min Scan# 64  
 Delta R.T. -0.007 min  
 Lab File: BN037629.D  
 Acq: 20 Aug 2025 10:49

Instrument :  
 BNA\_N  
 ClientSampleId :  
 MW-11A-37.5-081425DL

Tgt Ion:152 Resp: 2132

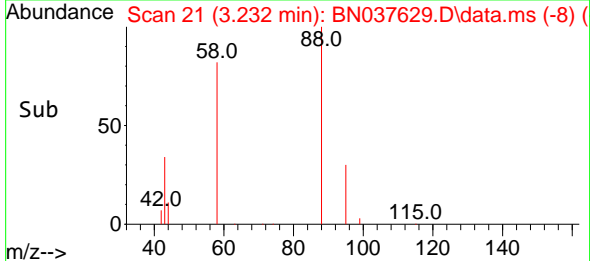
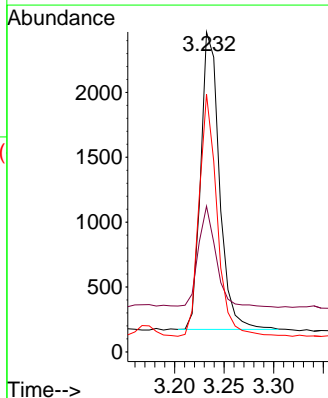
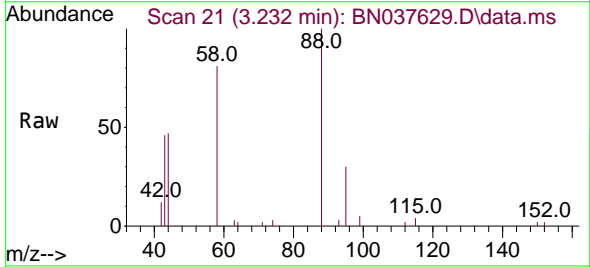
Ion	Ratio	Lower	Upper
152	100		
150	154.4	122.2	183.4
115	62.4	49.8	74.6

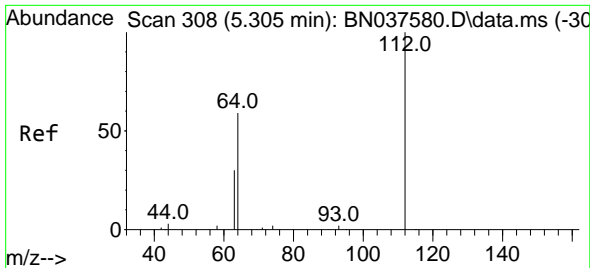


#2  
 1,4-Dioxane  
 Concen: 1.479 ng  
 RT: 3.232 min Scan# 21  
 Delta R.T. -0.007 min  
 Lab File: BN037629.D  
 Acq: 20 Aug 2025 10:49

Tgt Ion: 88 Resp: 3017

Ion	Ratio	Lower	Upper
88	100		
43	32.4	25.8	38.6
58	78.1	61.2	91.8



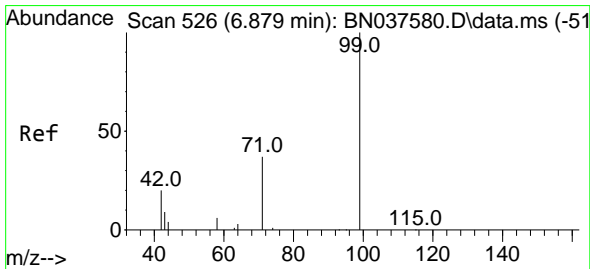
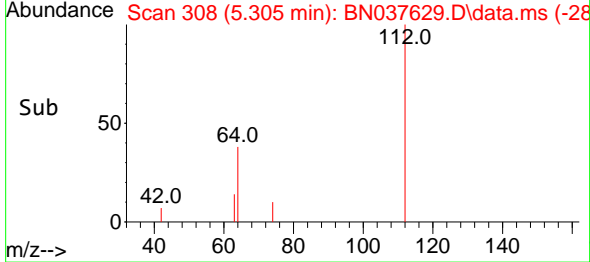
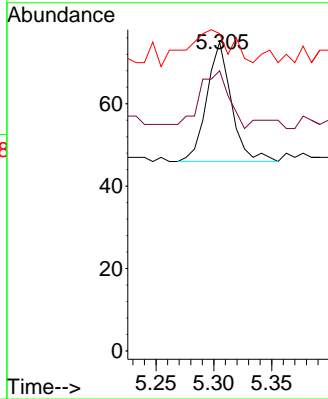
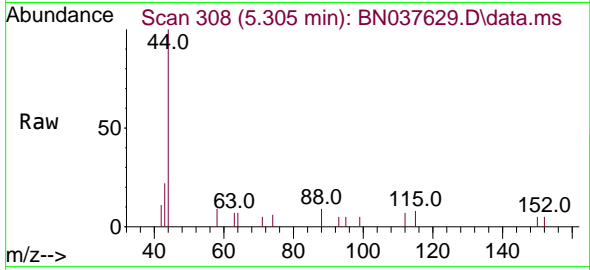


#4  
 2-Fluorophenol  
 Concen: 0.009 ng  
 RT: 5.305 min Scan# 30  
 Delta R.T. 0.000 min  
 Lab File: BN037629.D  
 Acq: 20 Aug 2025 10:49

Instrument :  
 BNA\_N  
 ClientSampleId :  
 MW-11A-37.5-081425DL

Tgt Ion: 112 Resp: 43

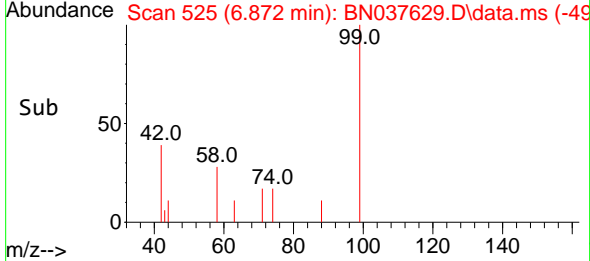
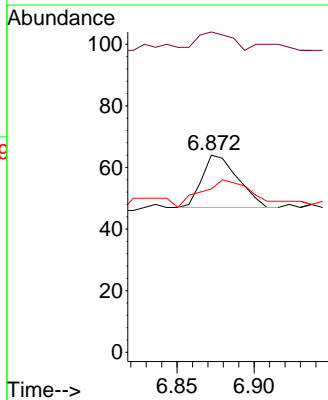
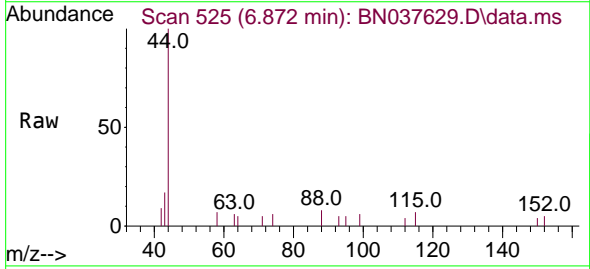
Ion	Ratio	Lower	Upper
112	100		
64	58.1	44.9	67.3
63	55.8	23.4	35.2

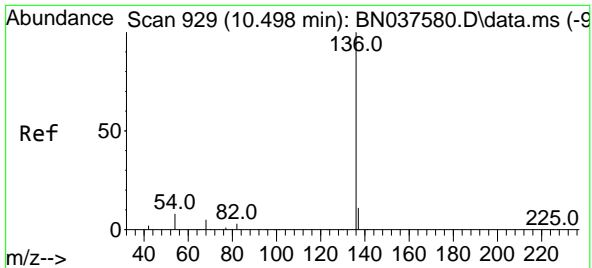


#5  
 Phenol-d6  
 Concen: 0.005 ng  
 RT: 6.872 min Scan# 525  
 Delta R.T. -0.007 min  
 Lab File: BN037629.D  
 Acq: 20 Aug 2025 10:49

Tgt Ion: 99 Resp: 27

Ion	Ratio	Lower	Upper
99	100		
42	33.3	18.5	27.7
71	85.2	28.6	42.8

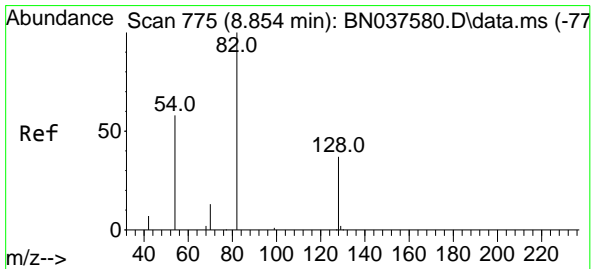
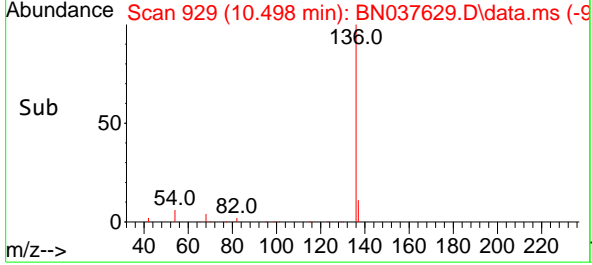
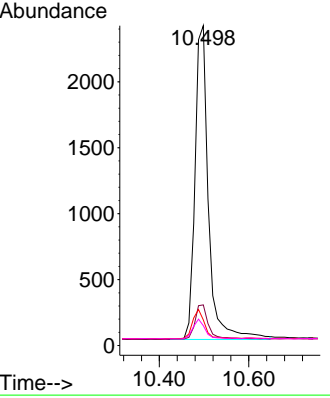
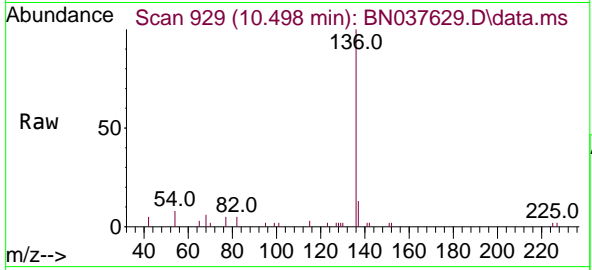




#7  
 Naphthalene-d8  
 Concen: 0.400 ng  
 RT: 10.498 min Scan# 911  
 Delta R.T. 0.000 min  
 Lab File: BN037629.D  
 Acq: 20 Aug 2025 10:49

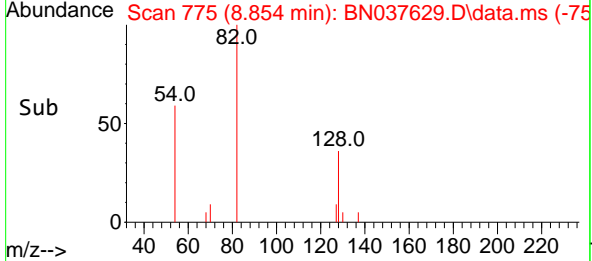
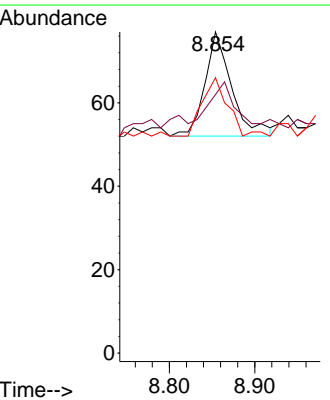
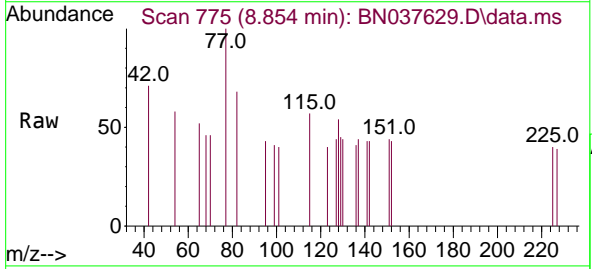
Instrument : BNA\_N  
 ClientSampleId : MW-11A-37.5-081425DL

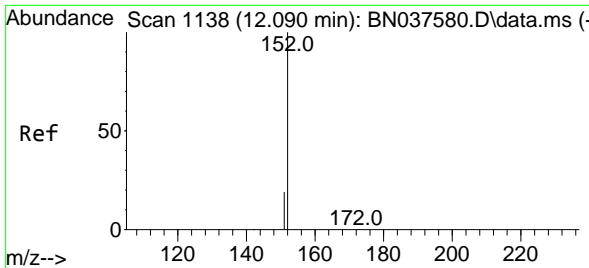
Tgt Ion	Resp	Lower	Upper
136	4980		
136	100		
137	12.7	9.5	14.3
54	8.0	7.3	10.9
68	6.2	5.1	7.7



#8  
 Nitrobenzene-d5  
 Concen: 0.015 ng  
 RT: 8.854 min Scan# 775  
 Delta R.T. 0.000 min  
 Lab File: BN037629.D  
 Acq: 20 Aug 2025 10:49

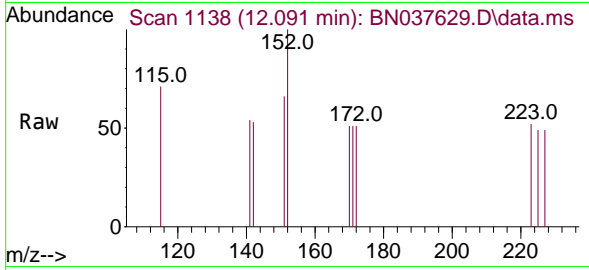
Tgt Ion	Resp	Lower	Upper
82	54		
82	100		
128	80.5	32.6	48.8#
54	85.7	48.9	73.3#



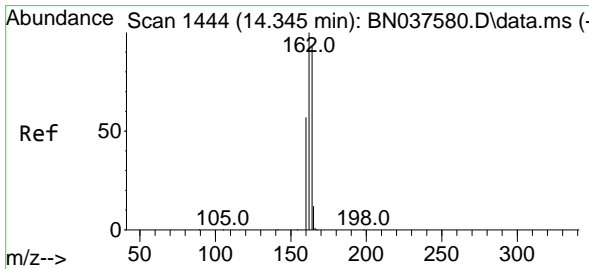
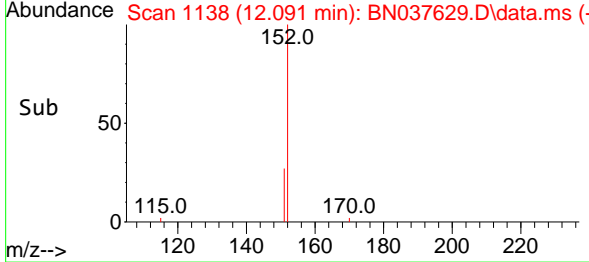
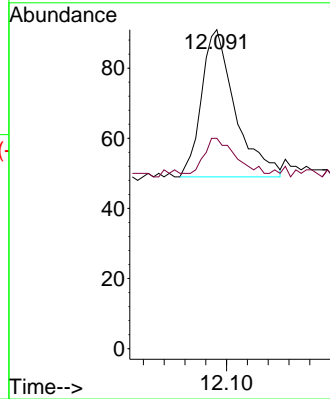


#11  
 2-Methylnaphthalene-d10  
 Concen: 0.014 ng  
 RT: 12.091 min Scan# 1138  
 Delta R.T. 0.000 min  
 Lab File: BN037629.D  
 Acq: 20 Aug 2025 10:49

Instrument :  
 BNA\_N  
 ClientSampleId :  
 MW-11A-37.5-081425DL

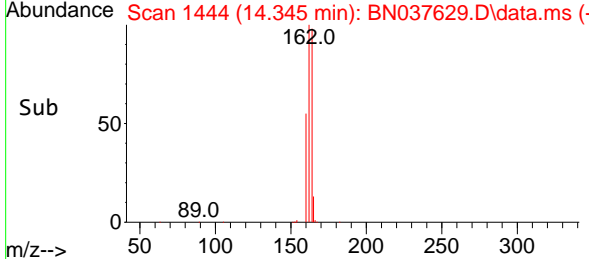
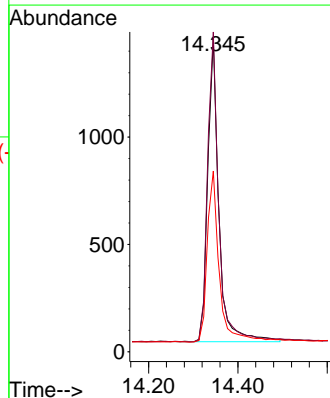
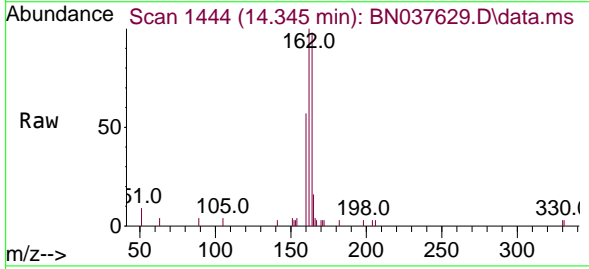


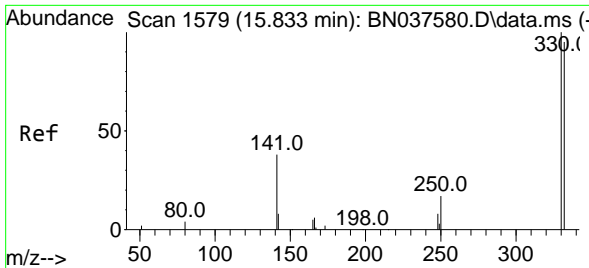
Tgt Ion:152 Resp: 94  
 Ion Ratio Lower Upper  
 152 100  
 151 23.4 17.3 25.9



#13  
 Acenaphthene-d10  
 Concen: 0.400 ng  
 RT: 14.345 min Scan# 1444  
 Delta R.T. 0.000 min  
 Lab File: BN037629.D  
 Acq: 20 Aug 2025 10:49

Tgt Ion:164 Resp: 2455  
 Ion Ratio Lower Upper  
 164 100  
 162 102.3 85.5 128.3  
 160 57.8 49.5 74.3

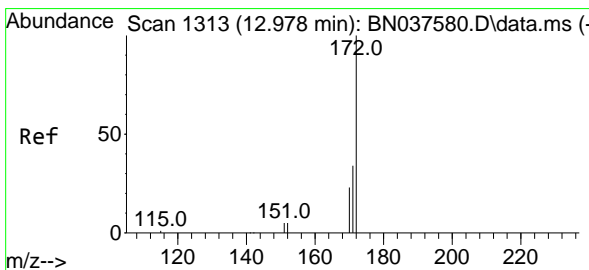
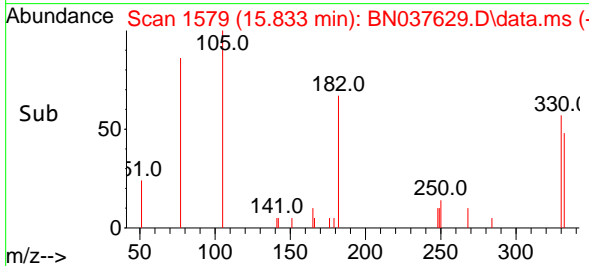
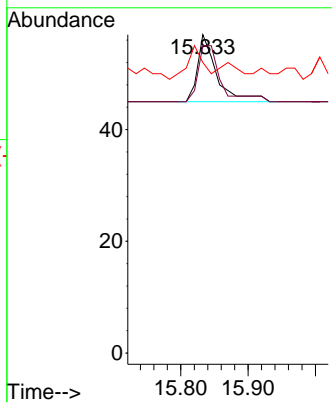
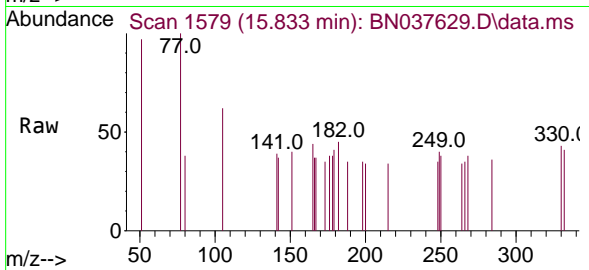




#14  
 2,4,6-Tribromophenol  
 Concen: 0.022 ng  
 RT: 15.833 min Scan# 11  
 Delta R.T. 0.000 min  
 Lab File: BN037629.D  
 Acq: 20 Aug 2025 10:49

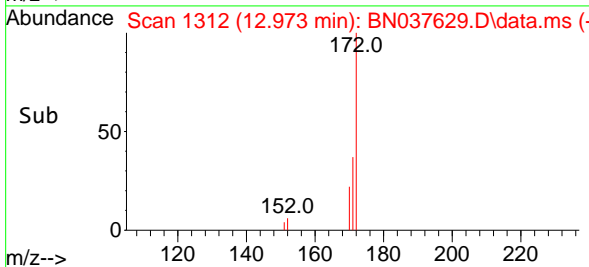
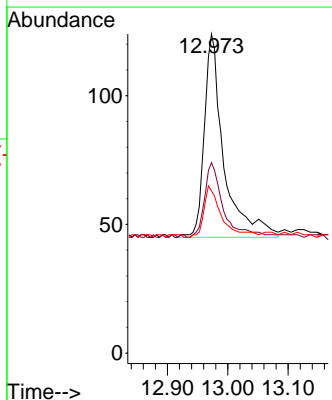
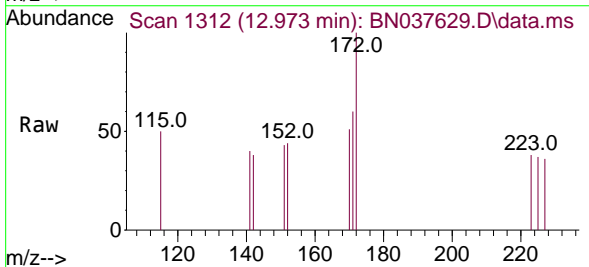
Instrument :  
 BNA\_N  
 ClientSampleId :  
 MW-11A-37.5-081425DL

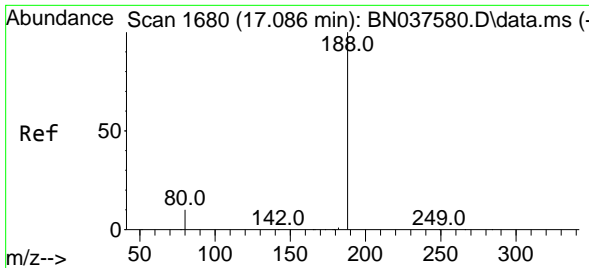
Tgt Ion	Resp	Lower	Upper
330	100		
332	95.8	77.4	116.0
141	41.7	30.9	46.3



#15  
 2-Fluorobiphenyl  
 Concen: 0.015 ng  
 RT: 12.973 min Scan# 1312  
 Delta R.T. -0.005 min  
 Lab File: BN037629.D  
 Acq: 20 Aug 2025 10:49

Tgt Ion	Resp	Lower	Upper
172	100		
171	59.7	28.2	42.4#
170	50.8	19.2	28.8#



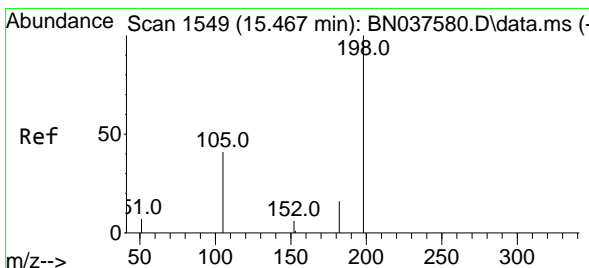
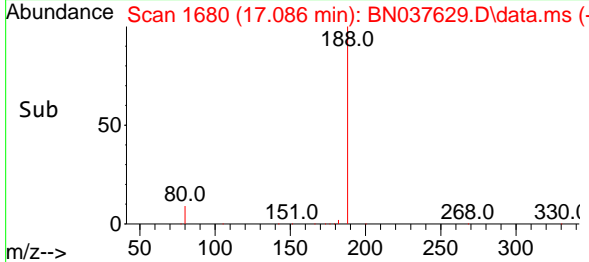
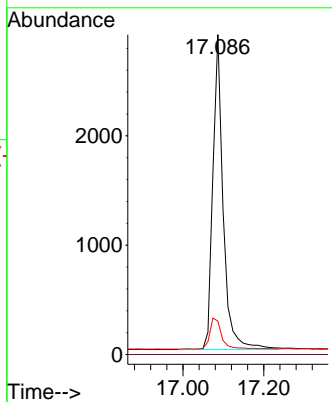
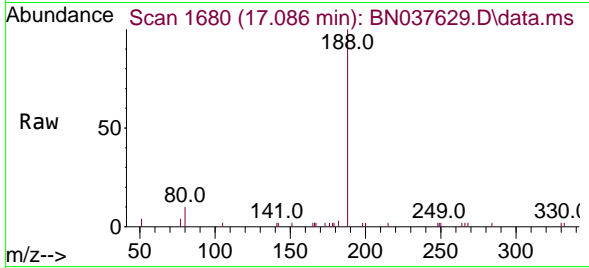


#19  
 Phenanthrene-d10  
 Concen: 0.400 ng  
 RT: 17.086 min Scan# 10  
 Delta R.T. 0.000 min  
 Lab File: BN037629.D  
 Acq: 20 Aug 2025 10:49

Instrument :  
 BNA\_N  
 ClientSampleId :  
 MW-11A-37.5-081425DL

Tgt Ion:188 Resp: 5117

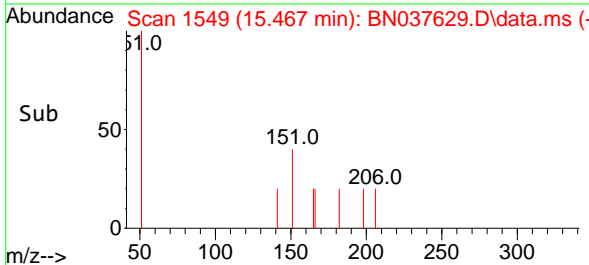
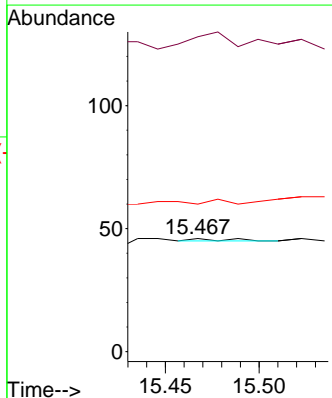
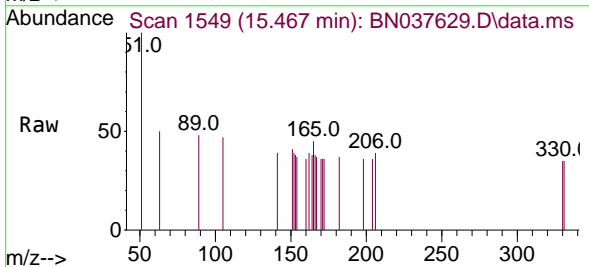
Ion	Ratio	Lower	Upper
188	100		
94	0.0	0.0	0.0
80	10.5	9.1	13.7



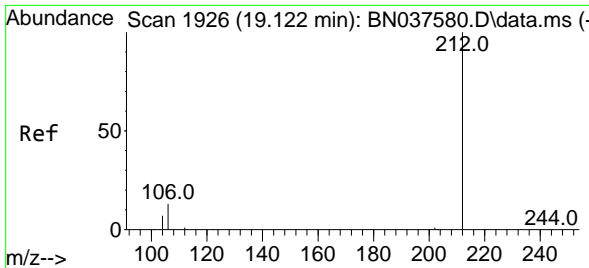
#20  
 4,6-Dinitro-2-methylphenol  
 Concen: 0.182 ng  
 RT: 15.467 min Scan# 1549  
 Delta R.T. 0.000 min  
 Lab File: BN037629.D  
 Acq: 20 Aug 2025 10:49

Tgt Ion:198 Resp: 1

Ion	Ratio	Lower	Upper
198	100		
51	278.3	81.0	121.6#
105	130.4	52.5	78.7#

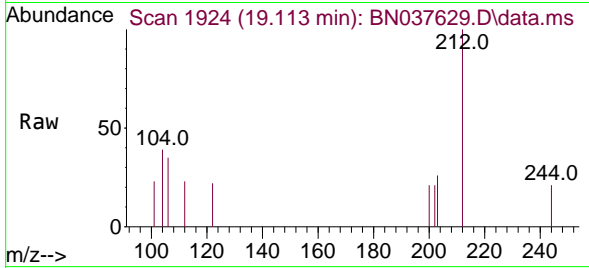






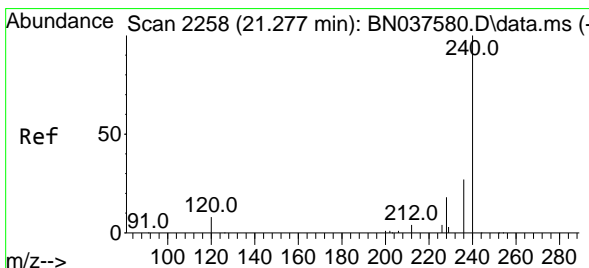
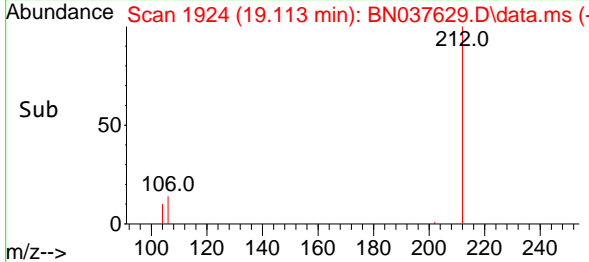
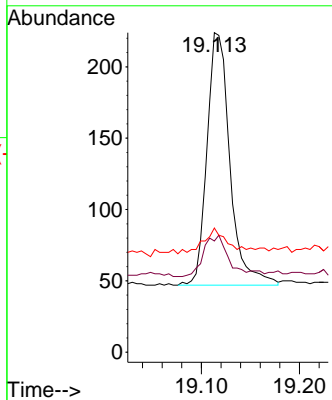
#27  
 Fluoranthene-d10  
 Concen: 0.021 ng  
 RT: 19.113 min Scan# 1924  
 Delta R.T. -0.009 min  
 Lab File: BN037629.D  
 Acq: 20 Aug 2025 10:49

Instrument : BNA\_N  
 ClientSampleId : MW-11A-37.5-081425DL



Tgt Ion: 212 Resp: 288

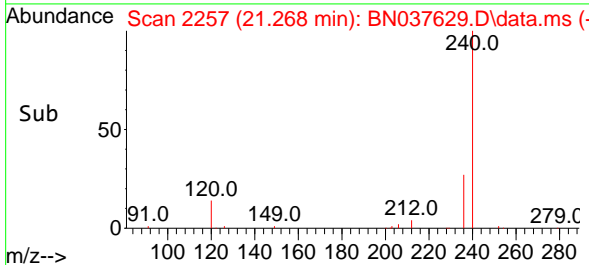
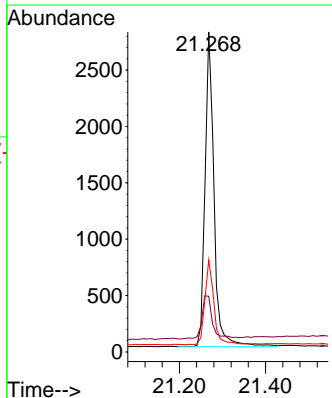
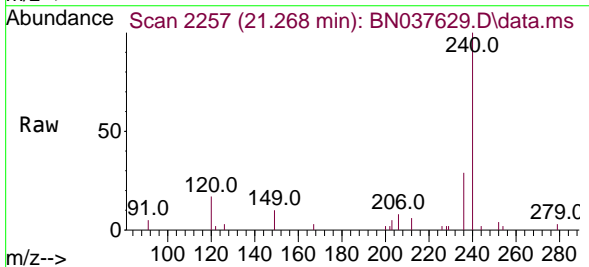
Ion	Ratio	Lower	Upper
212	100		
106	17.0	11.5	17.3
104	9.0	6.6	9.8

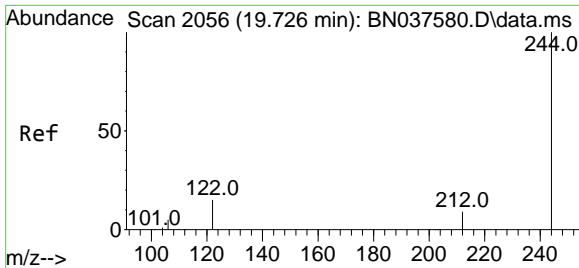


#29  
 Chrysene-d12  
 Concen: 0.400 ng  
 RT: 21.268 min Scan# 2257  
 Delta R.T. -0.009 min  
 Lab File: BN037629.D  
 Acq: 20 Aug 2025 10:49

Tgt Ion: 240 Resp: 4012

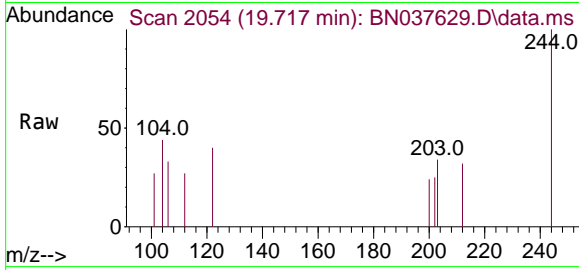
Ion	Ratio	Lower	Upper
240	100		
120	17.4	8.9	13.3
236	28.7	22.6	33.8



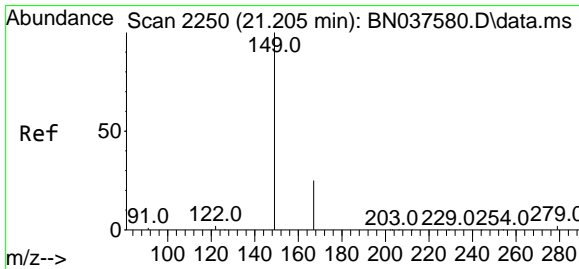
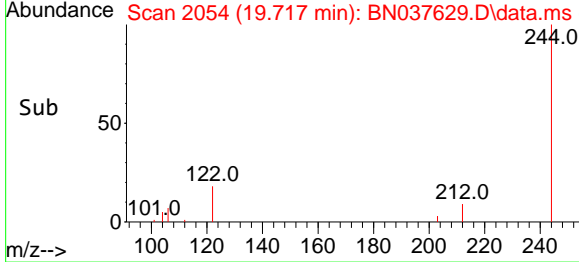
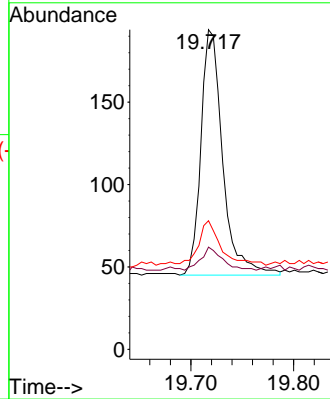


#31  
 Terphenyl-d14  
 Concen: 0.027 ng  
 RT: 19.717 min Scan# 2054  
 Delta R.T. -0.009 min  
 Lab File: BN037629.D  
 Acq: 20 Aug 2025 10:49

Instrument : BNA\_N  
 ClientSampleId : MW-11A-37.5-081425DL

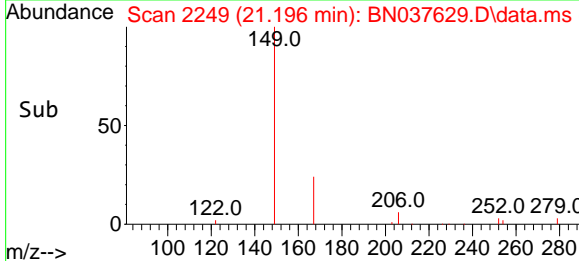
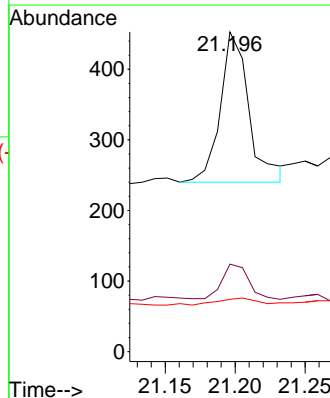
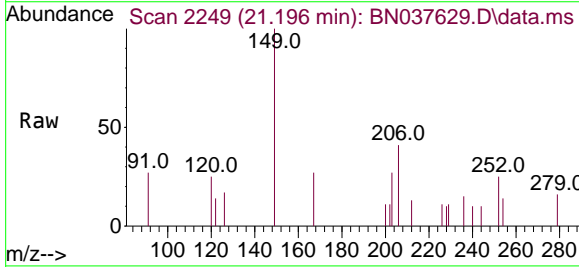


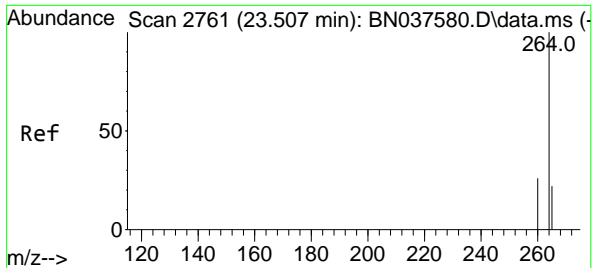
Tgt Ion:244 Resp: 220  
 Ion Ratio Lower Upper  
 244 100  
 212 32.0 8.2 12.2#  
 122 40.2 13.2 19.8#



#34  
 Bis(2-ethylhexyl)phthalate  
 Concen: 0.055 ng  
 RT: 21.196 min Scan# 2249  
 Delta R.T. -0.009 min  
 Lab File: BN037629.D  
 Acq: 20 Aug 2025 10:49

Tgt Ion:149 Resp: 304  
 Ion Ratio Lower Upper  
 149 100  
 167 21.7 20.5 30.7  
 279 6.9 2.6 4.0#





#35  
 Perylene-d12  
 Concen: 0.400 ng  
 RT: 23.502 min Scan# 21  
 Delta R.T. -0.006 min  
 Lab File: BN037629.D  
 Acq: 20 Aug 2025 10:49

Instrument : BNA\_N  
 ClientSampleId : MW-11A-37.5-081425DL

Tgt Ion:264 Resp: 3548

Ion	Ratio	Lower	Upper
264	100		
260	26.8	21.6	32.4
265	94.3	48.2	72.4#

