

Data Path : Z:\svoasrv\HPCHEM1\BNA_N\Data\BN082922\
 Data File : BN021445.D
 Acq On : 30 Aug 2022 06:44
 Operator : CG/JU
 Sample : N4297-23
 Misc :
 ALS Vial : 29 Sample Multiplier: 1

Instrument :
 BNA_N
 ClientSampleId :
 RW9-MW01S-20220821

Quant Time: Aug 30 07:10:38 2022
 Quant Method : Z:\SVOASRV\HPCHEM1\BNA_N\METHODS\8270-SIM-BN082922.M
 Quant Title : ASP BNA STANDARDS FOR 5 POINT CALIBRATION
 QLast Update : Mon Aug 29 16:30:43 2022
 Response via : Initial Calibration

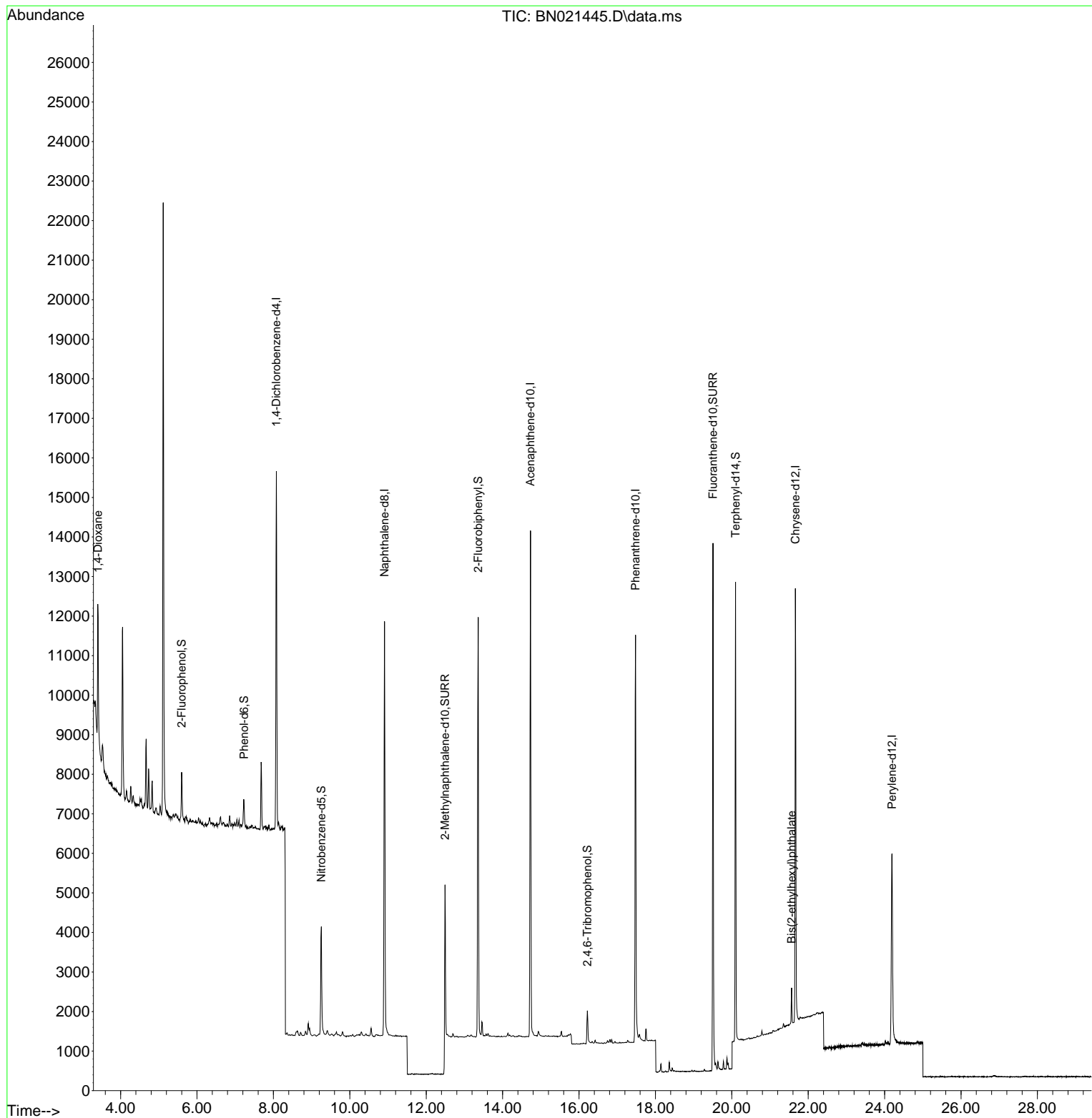
Compound	R.T.	QIon	Response	Conc	Units	Dev(Min)	
Internal Standards							
1) 1,4-Dichlorobenzene-d4	8.076	152	4535	0.400	ng	0.00	
7) Naphthalene-d8	10.909	136	14096	0.400	ng	0.00	
13) Acenaphthene-d10	14.728	164	7281	0.400	ng	0.00	
19) Phenanthrene-d10	17.480	188	15098	0.400	ng	0.00	
29) Chrysene-d12	21.664	240	10692	0.400	ng	0.00	#
35) Perylene-d12	24.191	264	7815	0.400	ng	0.00	
System Monitoring Compounds							
4) 2-Fluorophenol	5.599	112	1076	0.121	ng	0.00	
5) Phenol-d6	7.231	99	760	0.067	ng	0.00	
8) Nitrobenzene-d5	9.254	82	2668	0.280	ng	0.00	
11) 2-Methylnaphthalene-d10	12.493	152	9884	0.311	ng	0.00	
14) 2,4,6-Tribromophenol	16.218	330	543	0.227	ng	0.00	
15) 2-Fluorobiphenyl	13.360	172	9603	0.302	ng	0.00	
27) Fluoranthene-d10	19.505	212	14423	0.372	ng	0.00	
31) Terphenyl-d14	20.097	244	9800	0.408	ng	0.00	
Target Compounds							
2) 1,4-Dioxane	3.410	88	2267	0.400	ng	0.00	99
34) Bis(2-ethylhexyl)phtha...	21.565	149	934	0.062	ng	0.00	# 95

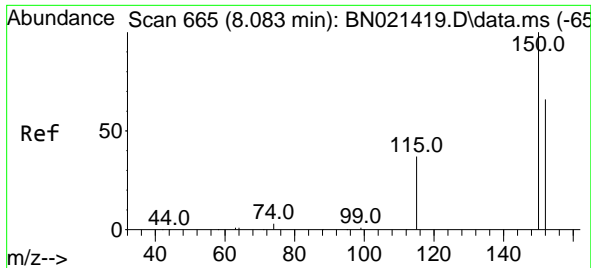
(#) = qualifier out of range (m) = manual integration (+) = signals summed

Data Path : Z:\svoasrv\HPCHEM1\BNA_N\Data\BN082922\
Data File : BN021445.D
Acq On : 30 Aug 2022 06:44
Operator : CG/JU
Sample : N4297-23
Misc :
ALS Vial : 29 Sample Multiplier: 1

Instrument :
BNA_N
ClientSampleId :
RW9-MW01S-20220821

Quant Time: Aug 30 07:10:38 2022
Quant Method : Z:\SVOASRV\HPCHEM1\BNA_N\METHODS\8270-SIM-BN082922.M
Quant Title : ASP BNA STANDARDS FOR 5 POINT CALIBRATION
QLast Update : Mon Aug 29 16:30:43 2022
Response via : Initial Calibration

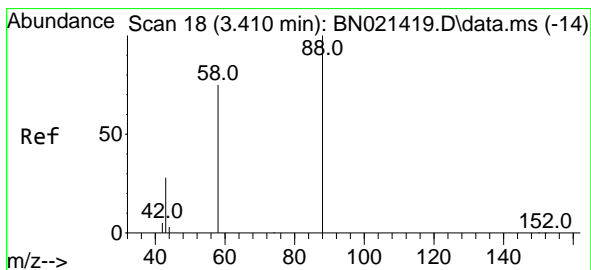
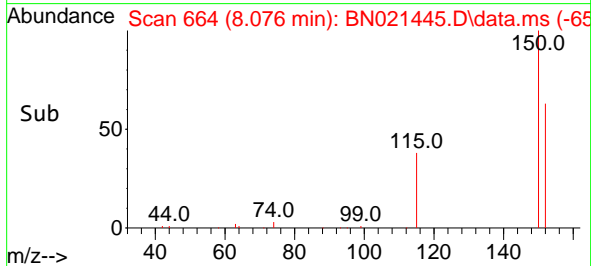
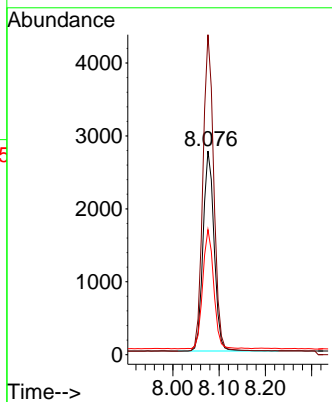
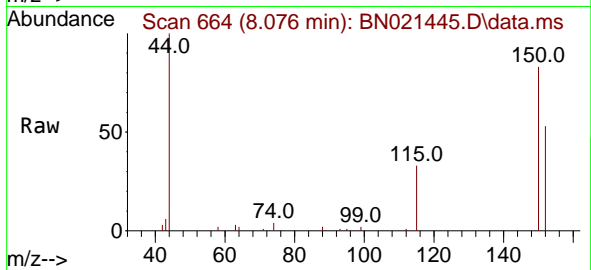




#1
 1,4-Dichlorobenzene-d4
 Concen: 0.400 ng
 RT: 8.076 min Scan# 60
 Delta R.T. -0.007 min
 Lab File: BN021445.D
 Acq: 30 Aug 2022 06:44

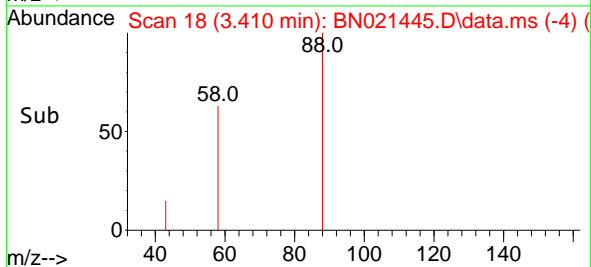
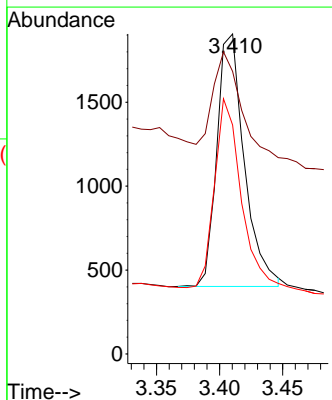
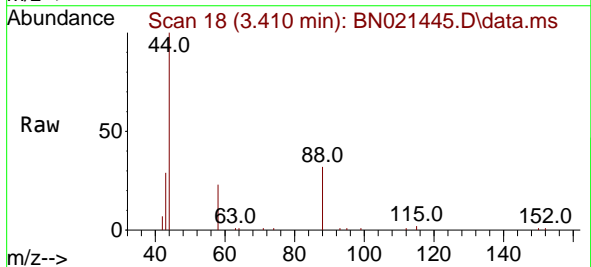
Instrument :
 BNA_N
 ClientSampleId :
 RW9-MW01S-20220821

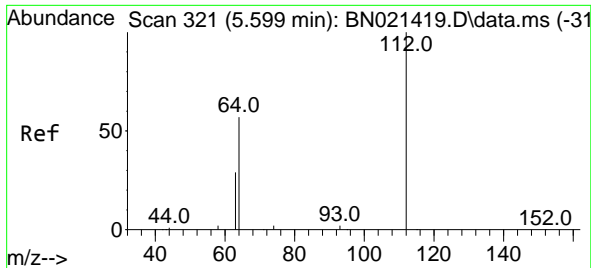
Tgt Ion:152 Resp: 4535
 Ion Ratio Lower Upper
 152 100
 150 157.1 121.4 182.0
 115 61.5 48.6 72.8



#2
 1,4-Dioxane
 Concen: 0.400 ng
 RT: 3.410 min Scan# 18
 Delta R.T. -0.000 min
 Lab File: BN021445.D
 Acq: 30 Aug 2022 06:44

Tgt Ion: 88 Resp: 2267
 Ion Ratio Lower Upper
 88 100
 43 42.8 35.8 53.8
 58 71.8 57.1 85.7

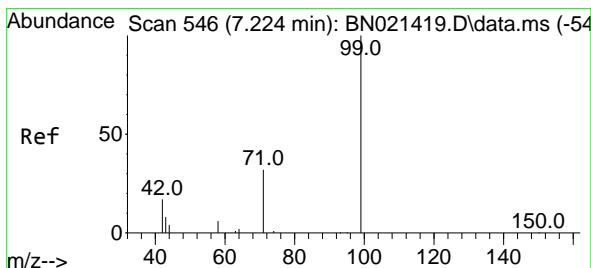
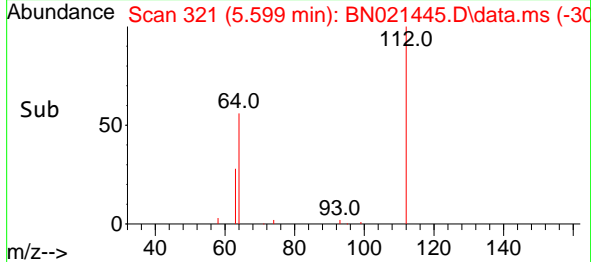
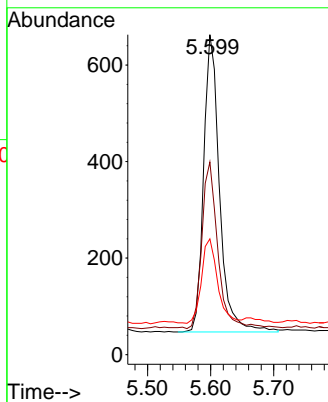
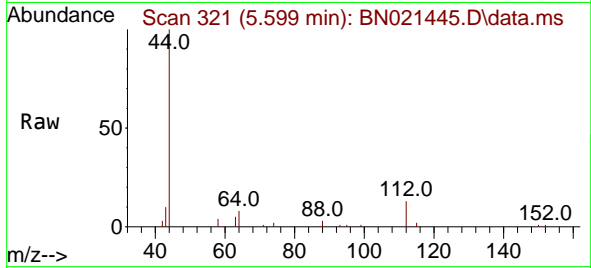




#4
 2-Fluorophenol
 Concen: 0.121 ng
 RT: 5.599 min Scan# 31
 Delta R.T. -0.000 min
 Lab File: BN021445.D
 Acq: 30 Aug 2022 06:44

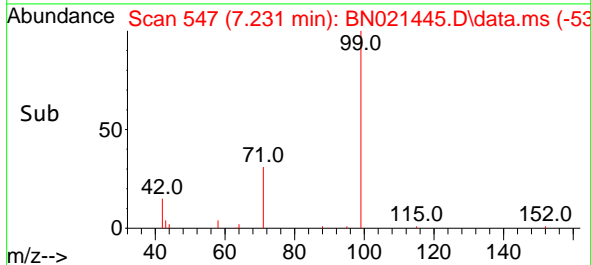
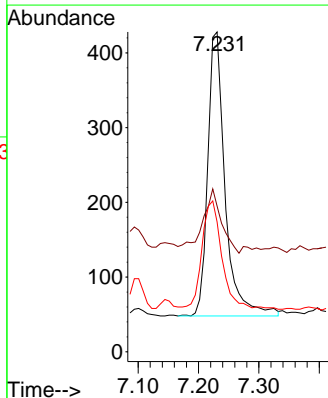
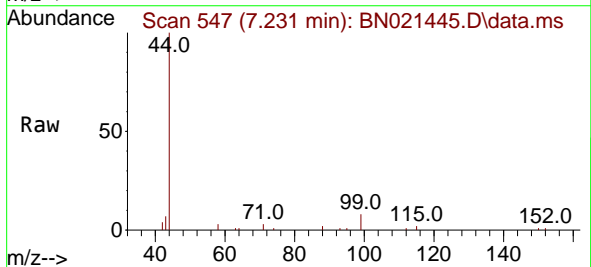
Instrument :
 BNA_N
 ClientSampleId :
 RW9-MW01S-20220821

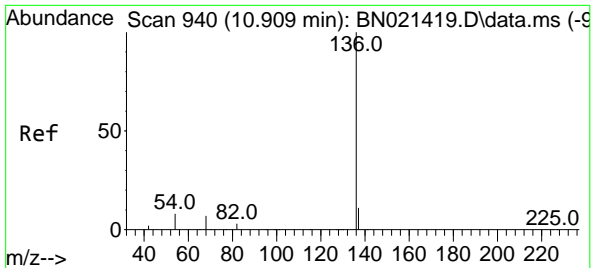
Tgt Ion	Resp	Lower	Upper
112	1076		
112	100		
64	55.0	43.5	65.3
63	28.5	22.6	34.0



#5
 Phenol-d6
 Concen: 0.067 ng
 RT: 7.231 min Scan# 547
 Delta R.T. 0.007 min
 Lab File: BN021445.D
 Acq: 30 Aug 2022 06:44

Tgt Ion	Resp	Lower	Upper
99	760		
99	100		
42	24.9	15.5	23.3#
71	44.2	24.2	36.2#

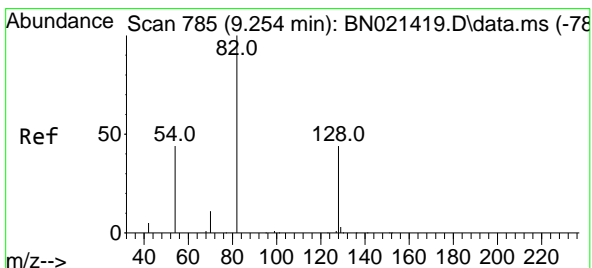
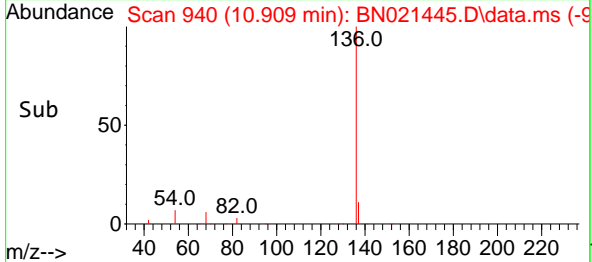
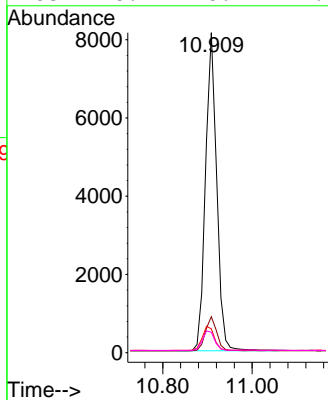
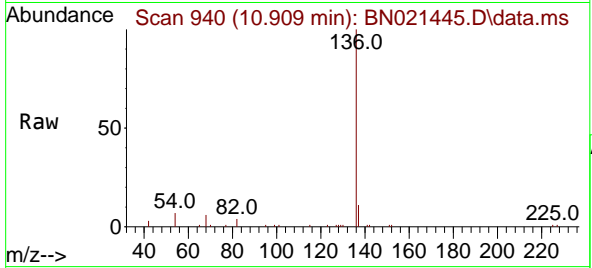




#7
 Naphthalene-d8
 Concen: 0.400 ng
 RT: 10.909 min Scan# 940
 Delta R.T. -0.000 min
 Lab File: BN021445.D
 Acq: 30 Aug 2022 06:44

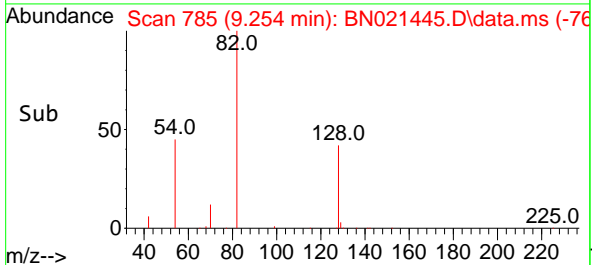
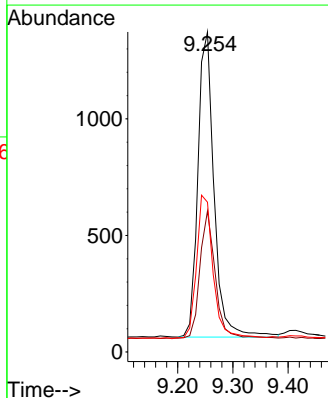
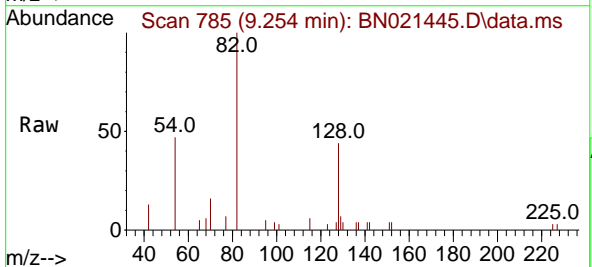
Instrument : BNA_N
 ClientSampleId : RW9-MW01S-20220821

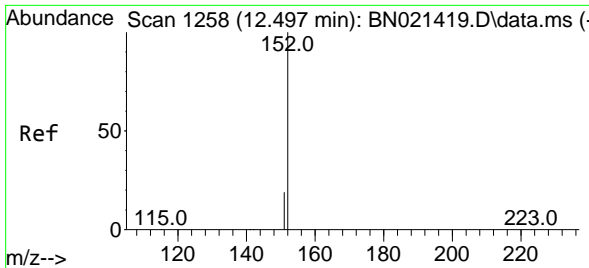
Tgt Ion	Resp	Lower	Upper
136	14096		
137	11.2	9.3	13.9
54	7.4	6.9	10.3
68	6.4	6.1	9.1



#8
 Nitrobenzene-d5
 Concen: 0.280 ng
 RT: 9.254 min Scan# 785
 Delta R.T. -0.000 min
 Lab File: BN021445.D
 Acq: 30 Aug 2022 06:44

Tgt Ion	Resp	Lower	Upper
82	2668		
128	44.1	30.9	46.3
54	46.8	42.7	64.1

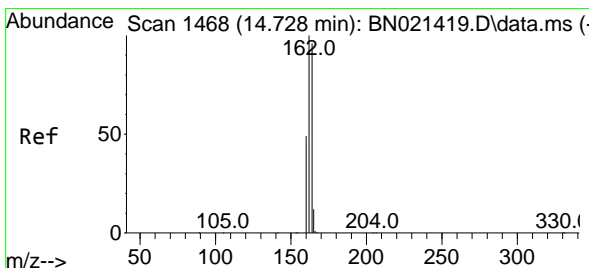
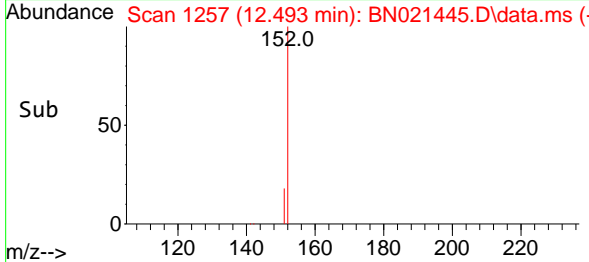
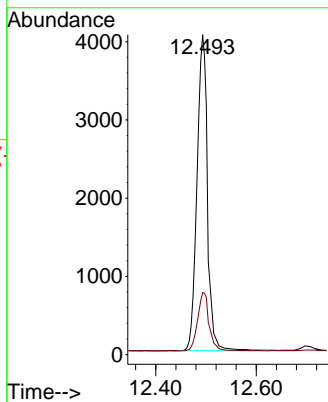
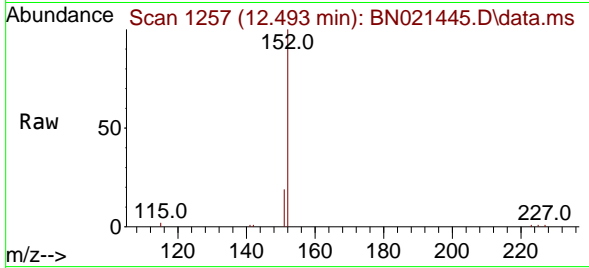




#11
 2-Methylnaphthalene-d10
 Concen: 0.311 ng
 RT: 12.493 min Scan# 11
 Delta R.T. -0.004 min
 Lab File: BN021445.D
 Acq: 30 Aug 2022 06:44

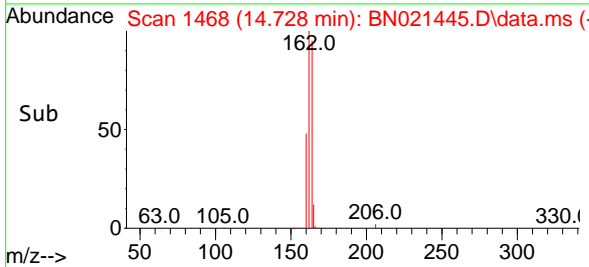
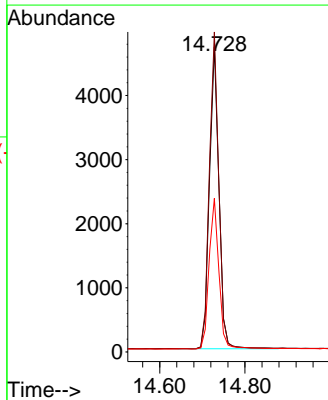
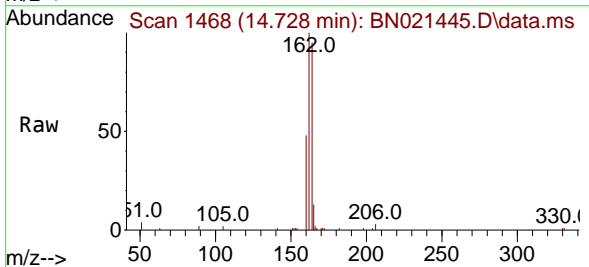
Instrument :
 BNA_N
 ClientSampleId :
 RW9-MW01S-20220821

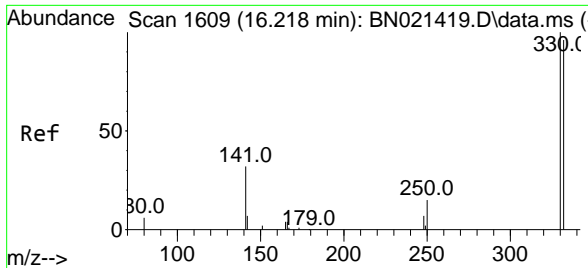
Tgt Ion:152 Resp: 9884
 Ion Ratio Lower Upper
 152 100
 151 17.9 14.5 21.7



#13
 Acenaphthene-d10
 Concen: 0.400 ng
 RT: 14.728 min Scan# 1468
 Delta R.T. 0.000 min
 Lab File: BN021445.D
 Acq: 30 Aug 2022 06:44

Tgt Ion:164 Resp: 7281
 Ion Ratio Lower Upper
 164 100
 162 104.9 82.2 123.4
 160 50.3 39.5 59.3

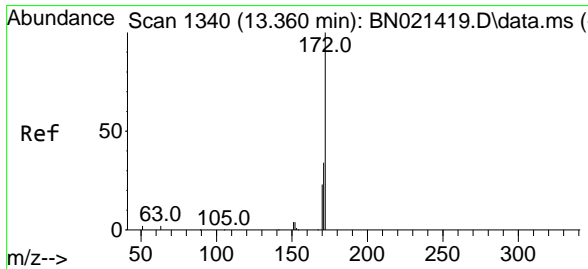
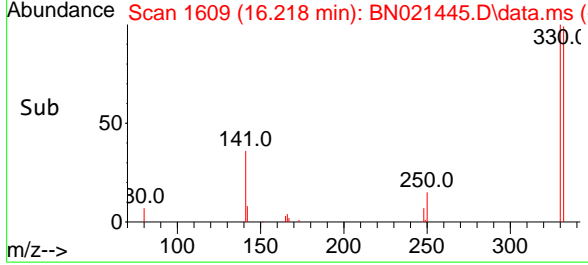
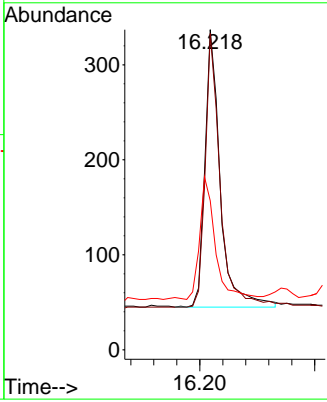
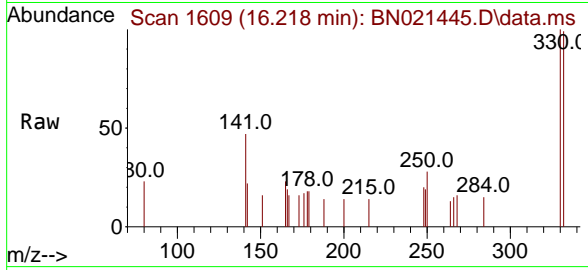




#14
 2,4,6-Tribromophenol
 Concen: 0.227 ng
 RT: 16.218 min Scan# 1609
 Delta R.T. 0.000 min
 Lab File: BN021445.D
 Acq: 30 Aug 2022 06:44

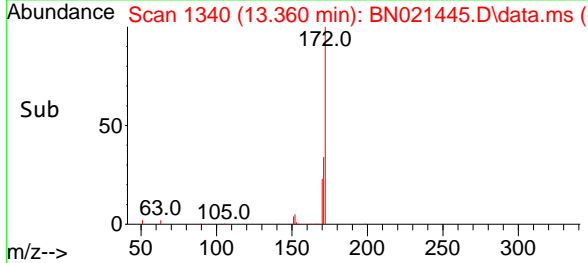
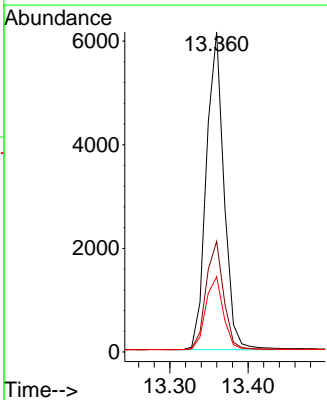
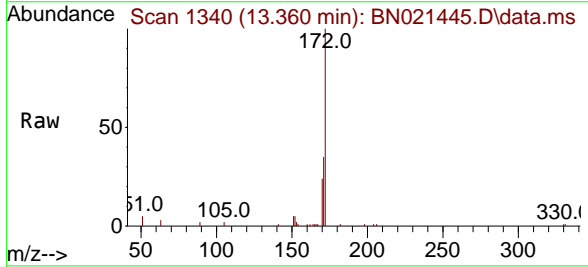
Instrument : BNA_N
 ClientSampleId : RW9-MW01S-20220821

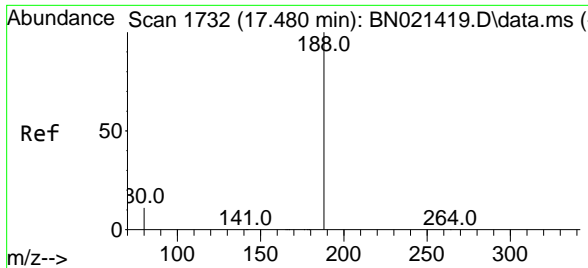
Tgt Ion	Resp	Lower	Upper
330	100		
332	95.6	79.3	118.9
141	45.3	37.1	55.7



#15
 2-Fluorobiphenyl
 Concen: 0.302 ng
 RT: 13.360 min Scan# 1340
 Delta R.T. -0.000 min
 Lab File: BN021445.D
 Acq: 30 Aug 2022 06:44

Tgt Ion	Resp	Lower	Upper
172	100		
171	34.6	27.8	41.6
170	23.5	18.6	28.0

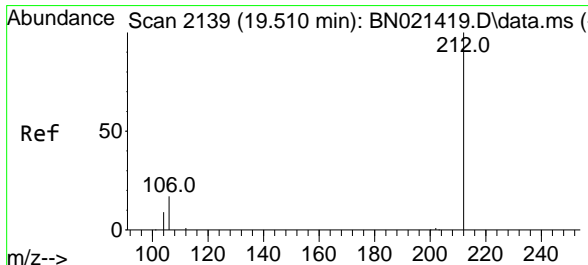
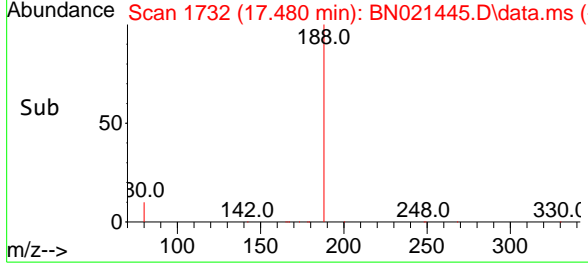
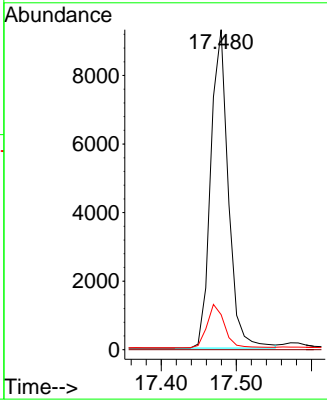
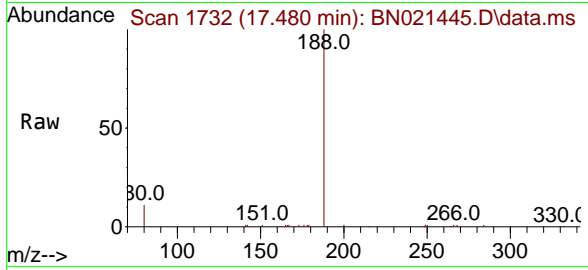




#19
 Phenanthrene-d10
 Concen: 0.400 ng
 RT: 17.480 min Scan# 11
 Delta R.T. -0.000 min
 Lab File: BN021445.D
 Acq: 30 Aug 2022 06:44

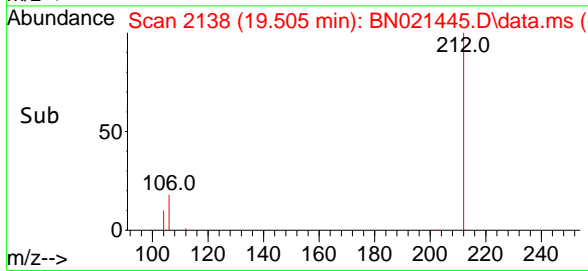
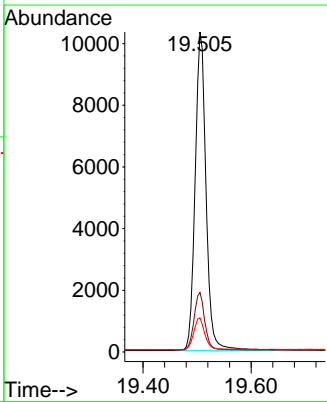
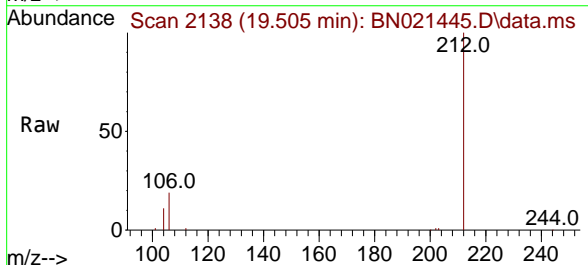
Instrument : BNA_N
 ClientSampleId : RW9-MW01S-20220821

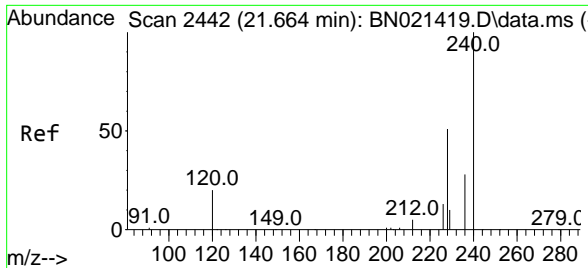
Tgt Ion	Resp	Lower	Upper
188	15098		
94	0.0	0.0	0.0
80	11.0	9.5	14.3



#27
 Fluoranthene-d10
 Concen: 0.372 ng
 RT: 19.505 min Scan# 2138
 Delta R.T. -0.004 min
 Lab File: BN021445.D
 Acq: 30 Aug 2022 06:44

Tgt Ion	Resp	Lower	Upper
212	14423		
106	18.0	14.2	21.2
104	10.1	7.8	11.6



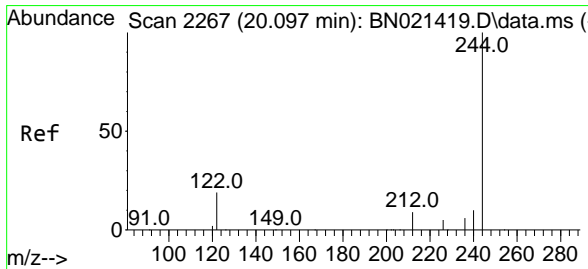
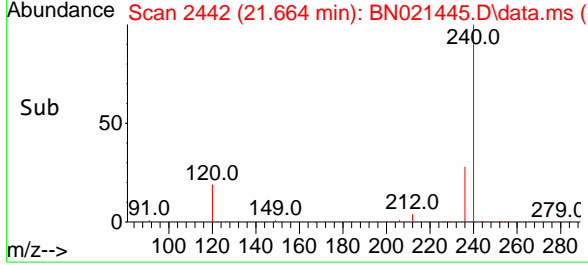
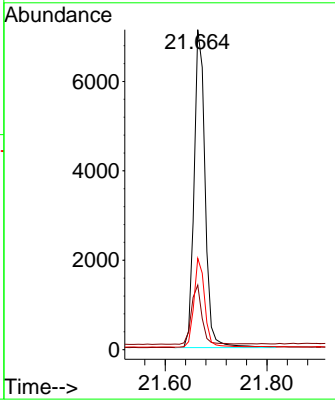
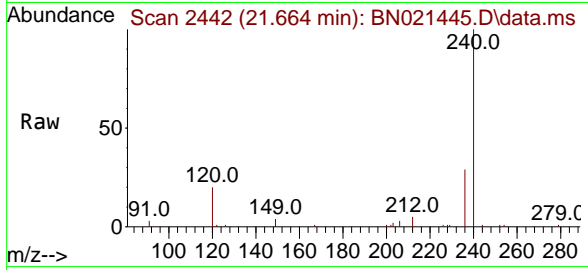


#29
 Chrysene-d12
 Concen: 0.400 ng
 RT: 21.664 min Scan# 2442
 Delta R.T. -0.000 min
 Lab File: BN021445.D
 Acq: 30 Aug 2022 06:44

Instrument : BNA_N
 ClientSampleId : RW9-MW01S-20220821

Tgt Ion:240 Resp: 10692

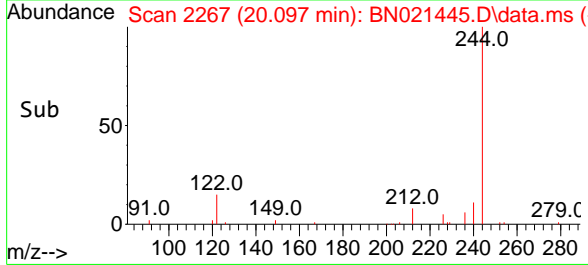
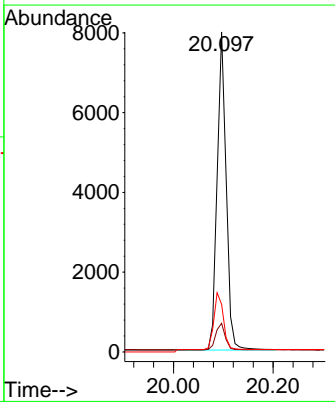
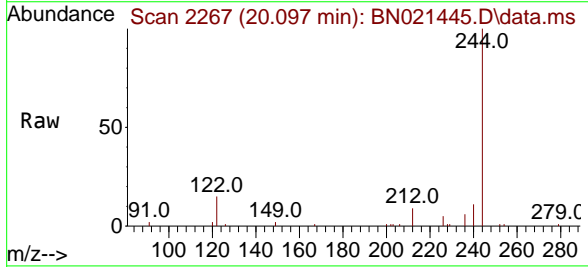
Ion	Ratio	Lower	Upper
240	100		
120	20.2	10.2	15.4#
236	28.6	22.1	33.1

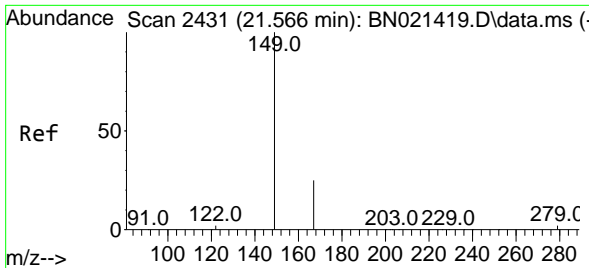


#31
 Terphenyl-d14
 Concen: 0.408 ng
 RT: 20.097 min Scan# 2267
 Delta R.T. -0.000 min
 Lab File: BN021445.D
 Acq: 30 Aug 2022 06:44

Tgt Ion:244 Resp: 9800

Ion	Ratio	Lower	Upper
244	100		
212	8.9	6.5	9.7
122	14.9	9.1	13.7#

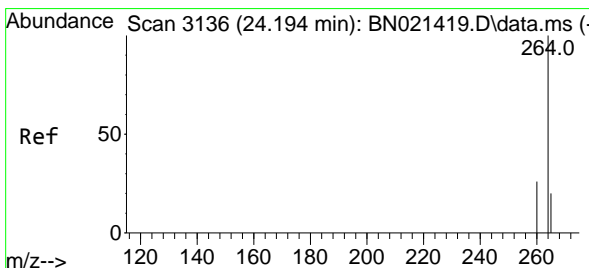
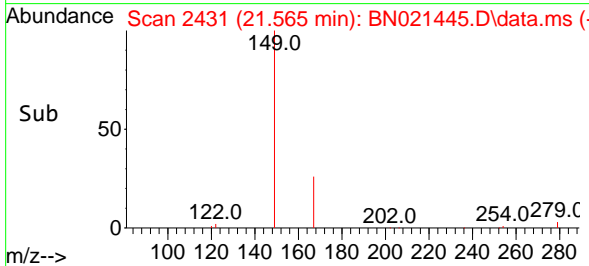
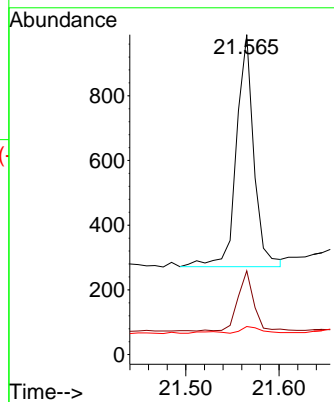
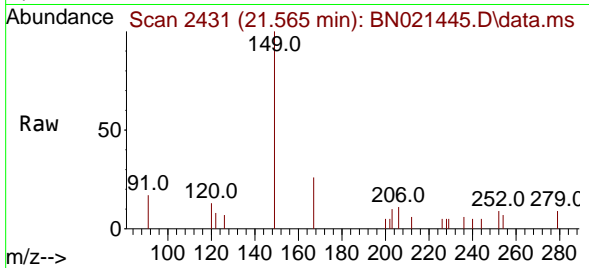




#34
 Bis(2-ethylhexyl)phthalate
 Concen: 0.062 ng
 RT: 21.565 min Scan# 2431
 Delta R.T. -0.000 min
 Lab File: BN021445.D
 Acq: 30 Aug 2022 06:44

Instrument : BNA_N
 ClientSampleId : RW9-MW01S-20220821

Tgt Ion	Resp	Lower	Upper
149	100		
167	23.9	21.4	32.0
279	3.4	2.2	3.2



#35
 Perylene-d12
 Concen: 0.400 ng
 RT: 24.191 min Scan# 3135
 Delta R.T. -0.003 min
 Lab File: BN021445.D
 Acq: 30 Aug 2022 06:44

Tgt Ion	Resp	Lower	Upper
264	100		
260	27.2	21.0	31.6
265	37.7	32.2	48.2

