

Data Path : Z:\svoasrv\HPCHEM1\BNA_N\Data\BN090122\
 Data File : BN021533.D
 Acq On : 01 Sep 2022 19:52
 Operator : CG/JU
 Sample : N4360-04DL 5X
 Misc :
 ALS Vial : 7 Sample Multiplier: 1

Instrument :
 BNA_N
 ClientSampleId :
 RE125D2-20220824DL

Quant Time: Sep 02 01:00:23 2022
 Quant Method : Z:\SVOASRV\HPCHEM1\BNA_N\METHODS\8270-SIM-BN082922.M
 Quant Title : ASP BNA STANDARDS FOR 5 POINT CALIBRATION
 QLast Update : Fri Sep 02 00:53:31 2022
 Response via : Initial Calibration

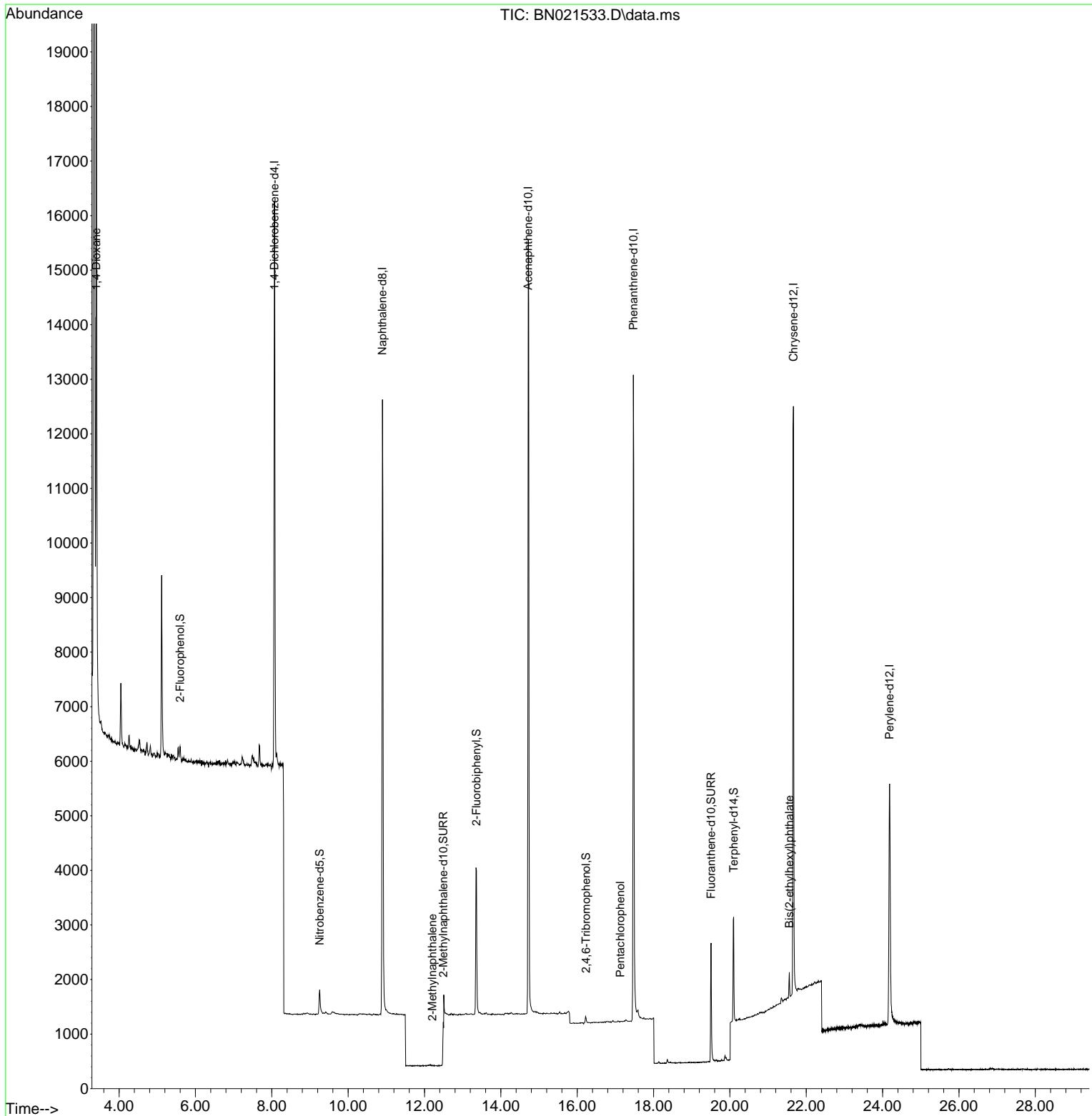
Compound	R.T.	QIon	Response	Conc	Units	Dev(Min)
Internal Standards						
1) 1,4-Dichlorobenzene-d4	8.069	152	5247	0.400	ng	0.00
7) Naphthalene-d8	10.898	136	16469	0.400	ng	0.00
13) Acenaphthene-d10	14.718	164	9009	0.400	ng	0.00
19) Phenanthrene-d10	17.470	188	18788	0.400	ng	# 0.00
29) Chrysene-d12	21.664	240	11449	0.400	ng	0.00
35) Perylene-d12	24.182	264	7629	0.400	ng	0.00
System Monitoring Compounds						
4) 2-Fluorophenol	5.599	112	228	0.022	ng	0.00
5) Phenol-d6	7.224	99	172	0.013	ng	0.00
8) Nitrobenzene-d5	9.254	82	542	0.049	ng	0.01
11) 2-Methylnaphthalene-d10	12.493	152	1797	0.048	ng	0.00
14) 2,4,6-Tribromophenol	16.229	330	81	0.027	ng	0.01
15) 2-Fluorobiphenyl	13.360	172	2884	0.073	ng	0.01
27) Fluoranthene-d10	19.506	212	2613	0.054	ng	0.00
31) Terphenyl-d14	20.097	244	1932	0.075	ng	0.00
Target Compounds						
2) 1,4-Dioxane	3.403	88	9693	1.477	ng	# 89
12) 2-Methylnaphthalene	12.202	142	2	0.127	ng	# 1
24) Pentachlorophenol	17.131	266	14	0.205	ng	# 51
34) Bis(2-ethylhexyl)phtha...	21.557	149	465	0.029	ng	# 97

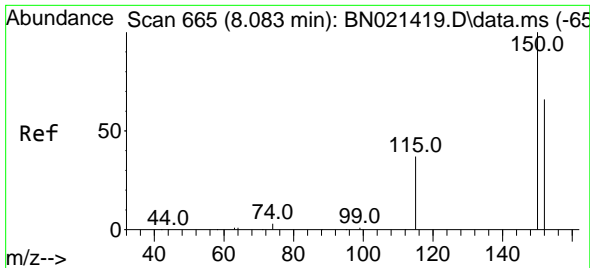
(#) = qualifier out of range (m) = manual integration (+) = signals summed

Data Path : Z:\svoasrv\HPCHEM1\BNA_N\Data\BN090122\
 Data File : BN021533.D
 Acq On : 01 Sep 2022 19:52
 Operator : CG/JU
 Sample : N4360-04DL 5X
 Misc :
 ALS Vial : 7 Sample Multiplier: 1

Instrument :
 BNA_N
 ClientSampleId :
 RE125D2-20220824DL

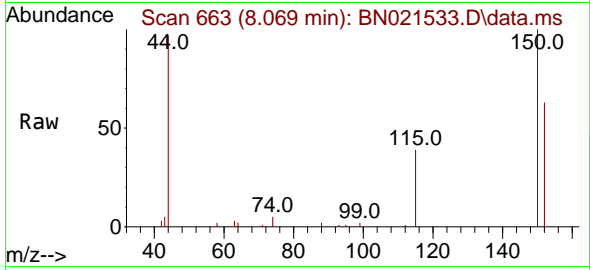
Quant Time: Sep 02 01:00:23 2022
 Quant Method : Z:\SVOASRV\HPCHEM1\BNA_N\METHODS\8270-SIM-BN082922.M
 Quant Title : ASP BNA STANDARDS FOR 5 POINT CALIBRATION
 QLast Update : Fri Sep 02 00:53:31 2022
 Response via : Initial Calibration



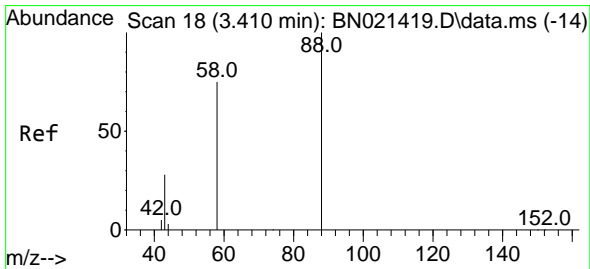
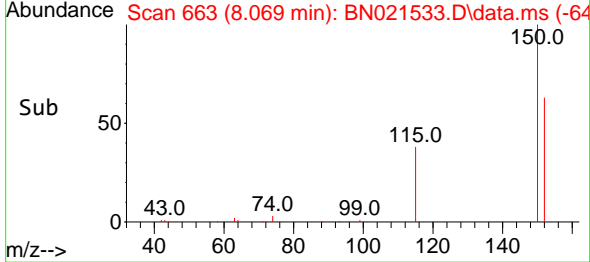
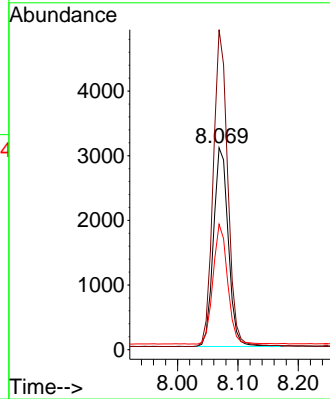


#1
 1,4-Dichlorobenzene-d4
 Concen: 0.400 ng
 RT: 8.069 min Scan# 60
 Delta R.T. -0.000 min
 Lab File: BN021533.D
 Acq: 01 Sep 2022 19:52

Instrument : BNA_N
 ClientSampleId : RE125D2-20220824DL

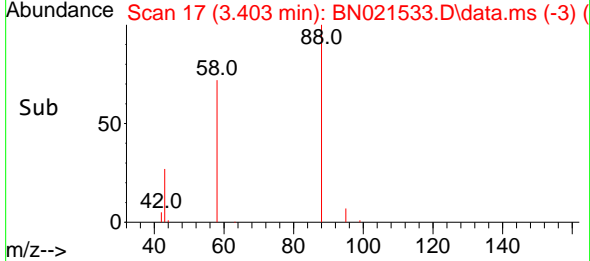
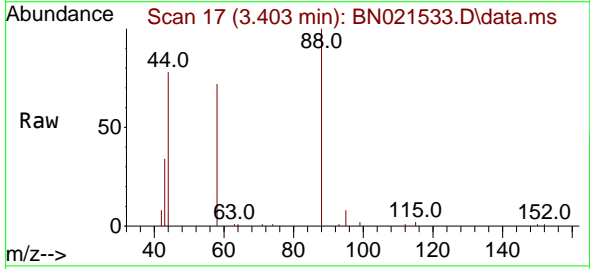
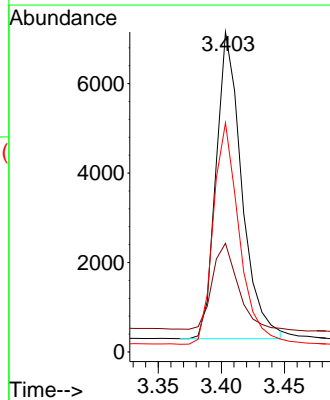


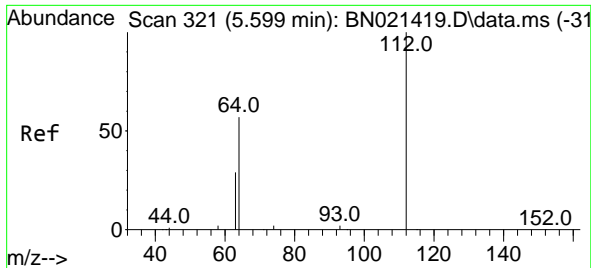
Tgt Ion:152 Resp: 5247
 Ion Ratio Lower Upper
 152 100
 150 158.5 121.4 182.0
 115 62.1 48.6 72.8



#2
 1,4-Dioxane
 Concen: 1.477 ng
 RT: 3.403 min Scan# 17
 Delta R.T. 0.000 min
 Lab File: BN021533.D
 Acq: 01 Sep 2022 19:52

Tgt Ion: 88 Resp: 9693
 Ion Ratio Lower Upper
 88 100
 43 27.9 35.8 53.8#
 58 72.9 57.1 85.7

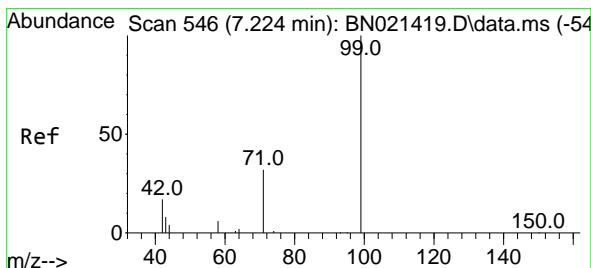
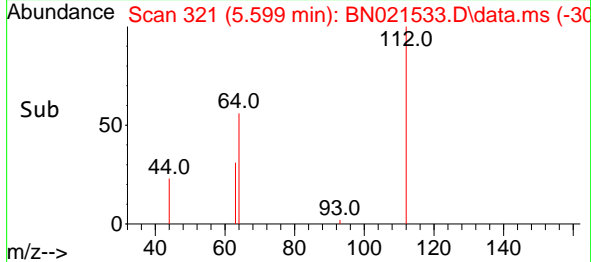
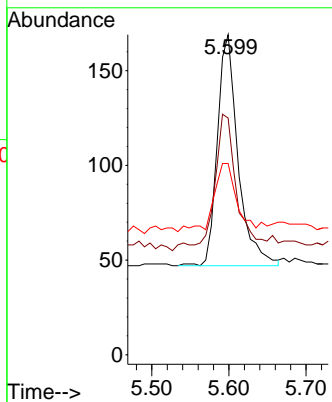
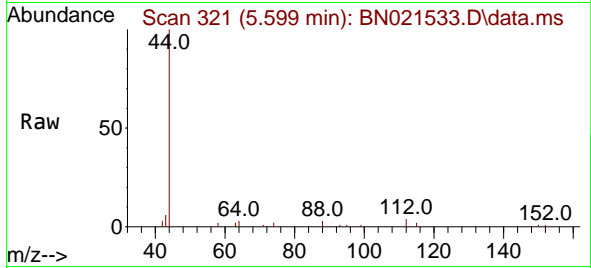




#4
 2-Fluorophenol
 Concen: 0.022 ng
 RT: 5.599 min Scan# 31
 Delta R.T. 0.007 min
 Lab File: BN021533.D
 Acq: 01 Sep 2022 19:52

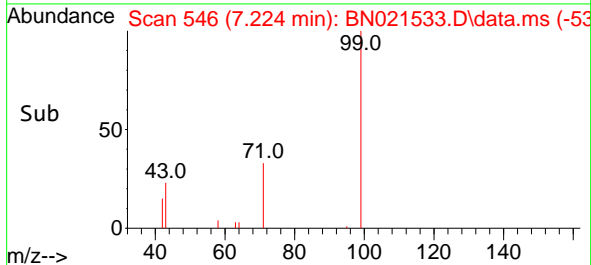
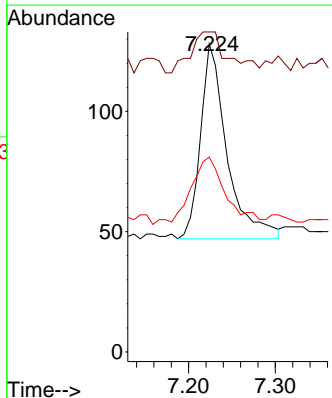
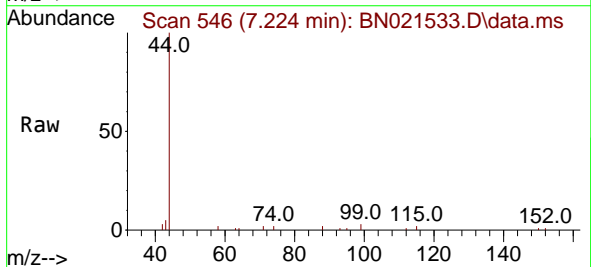
Instrument :
 BNA_N
 ClientSampleId :
 RE125D2-20220824DL

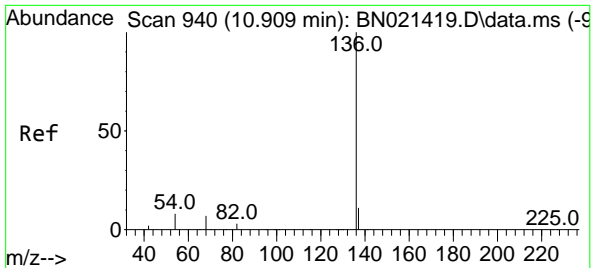
Tgt Ion	Resp	Lower	Upper
112	100		
64	56.6	43.5	65.3
63	32.5	22.6	34.0



#5
 Phenol-d6
 Concen: 0.013 ng
 RT: 7.224 min Scan# 546
 Delta R.T. 0.007 min
 Lab File: BN021533.D
 Acq: 01 Sep 2022 19:52

Tgt Ion	Resp	Lower	Upper
99	100		
42	29.1	15.5	23.3#
71	43.0	24.2	36.2#

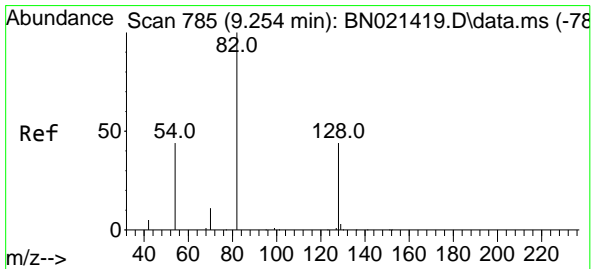
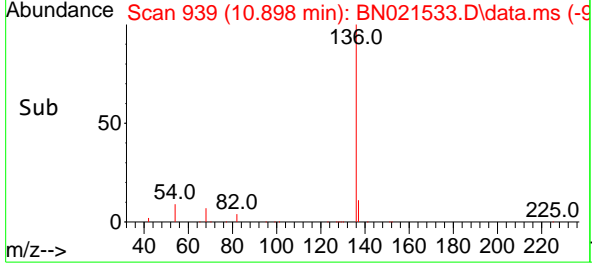
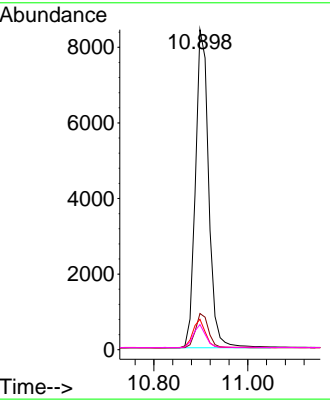
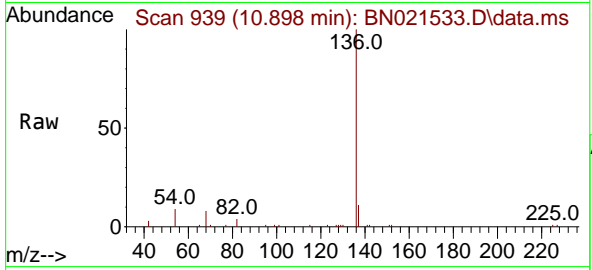




#7
 Naphthalene-d8
 Concen: 0.400 ng
 RT: 10.898 min Scan# 911
 Delta R.T. 0.000 min
 Lab File: BN021533.D
 Acq: 01 Sep 2022 19:52

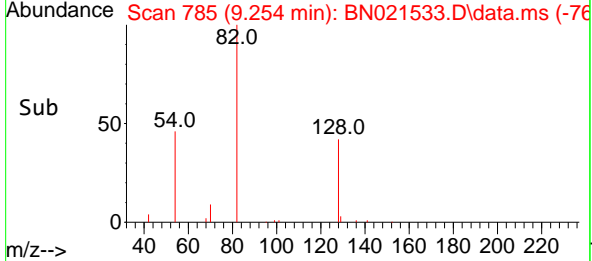
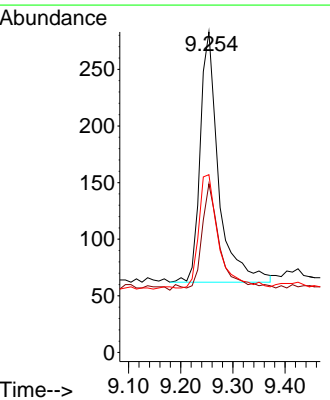
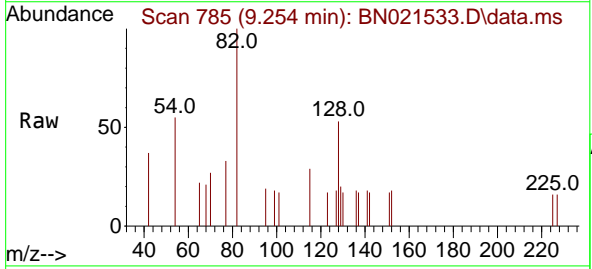
Instrument : BNA_N
 ClientSampleId : RE125D2-20220824DL

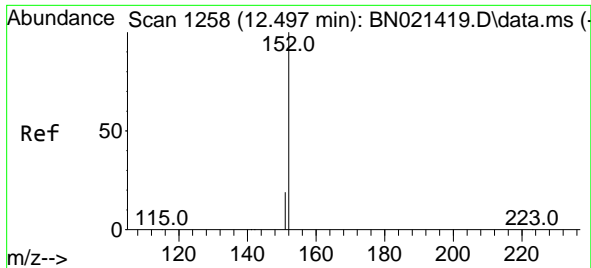
Tgt Ion	Resp	Lower	Upper
136	16469		
137	11.3	9.3	13.9
54	9.5	6.9	10.3
68	7.8	6.1	9.1



#8
 Nitrobenzene-d5
 Concen: 0.049 ng
 RT: 9.254 min Scan# 785
 Delta R.T. 0.011 min
 Lab File: BN021533.D
 Acq: 01 Sep 2022 19:52

Tgt Ion	Resp	Lower	Upper
82	542		
128	52.7	30.9	46.3#
54	55.5	42.7	64.1

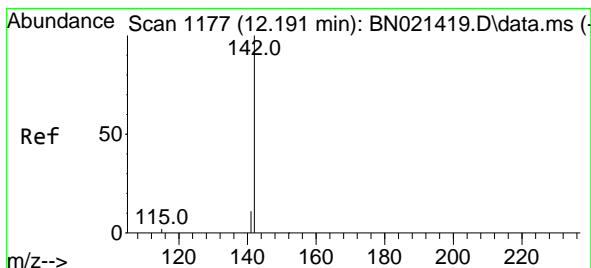
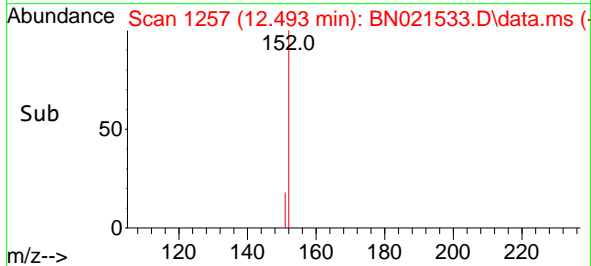
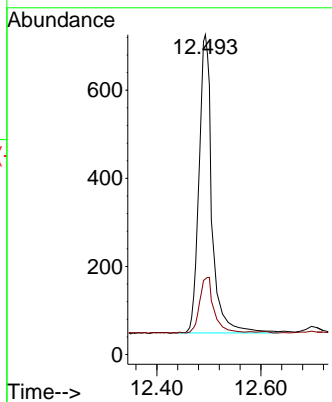
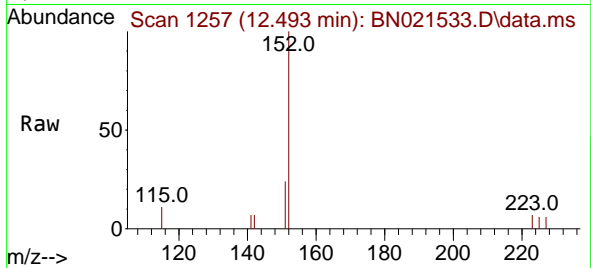




#11
 2-Methylnaphthalene-d10
 Concen: 0.048 ng
 RT: 12.493 min Scan# 1180
 Delta R.T. 0.008 min
 Lab File: BN021533.D
 Acq: 01 Sep 2022 19:52

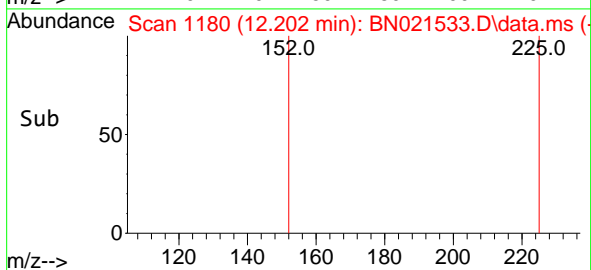
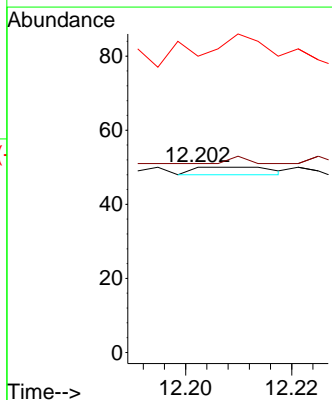
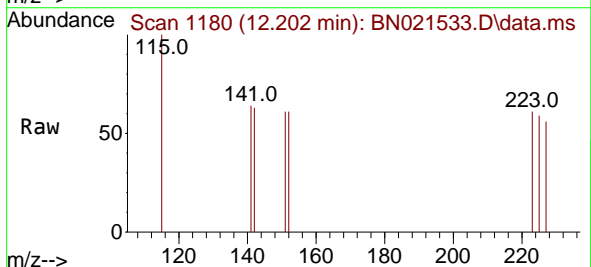
Instrument : BNA_N
 ClientSampleId : RE125D2-20220824DL

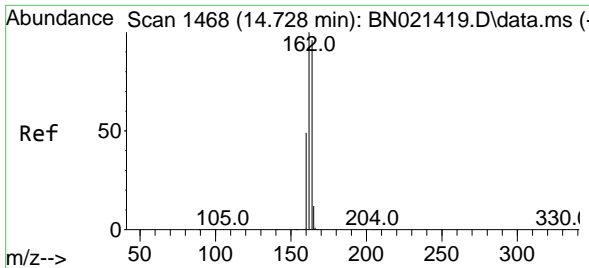
Tgt Ion:152 Resp: 1797
 Ion Ratio Lower Upper
 152 100
 151 17.5 14.5 21.7



#12
 2-Methylnaphthalene
 Concen: 0.127 ng
 RT: 12.202 min Scan# 1180
 Delta R.T. 0.019 min
 Lab File: BN021533.D
 Acq: 01 Sep 2022 19:52

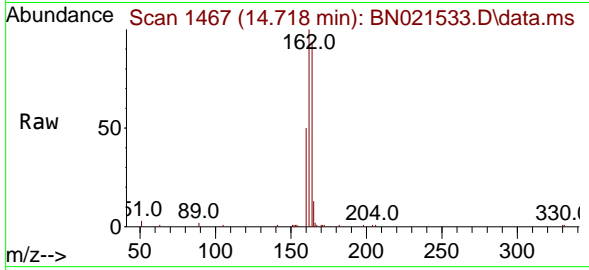
Tgt Ion:142 Resp: 2
 Ion Ratio Lower Upper
 142 100
 141 102.0 12.2 18.2#
 115 160.0 7.9 11.9#



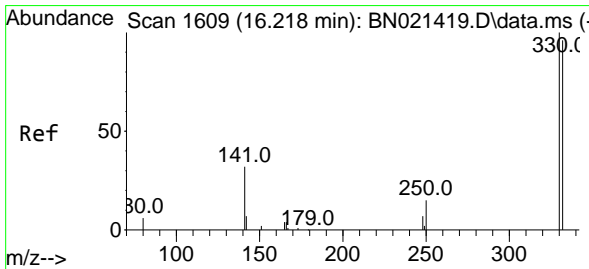
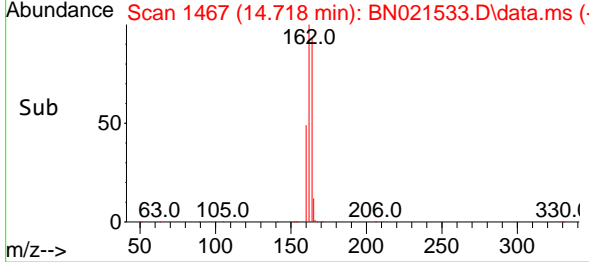
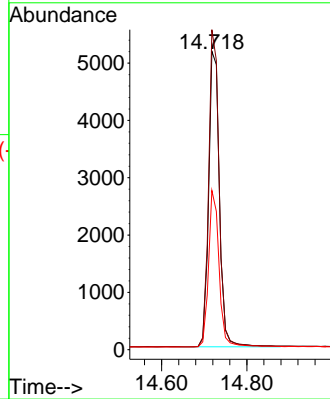


#13
 Acenaphthene-d10
 Concen: 0.400 ng
 RT: 14.718 min Scan# 1467
 Delta R.T. 0.000 min
 Lab File: BN021533.D
 Acq: 01 Sep 2022 19:52

Instrument :
 BNA_N
 ClientSampleId :
 RE125D2-20220824DL

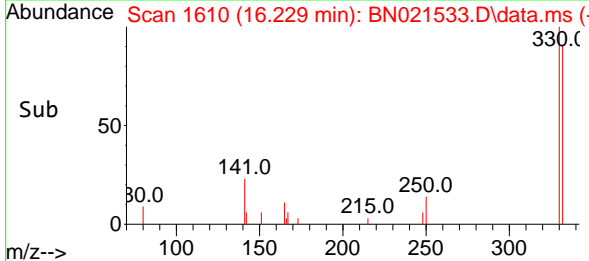
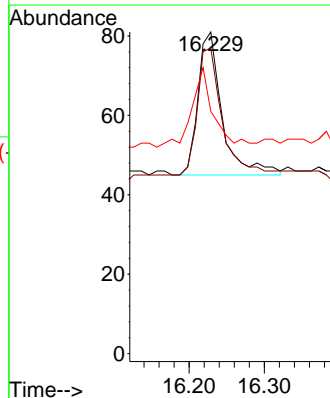
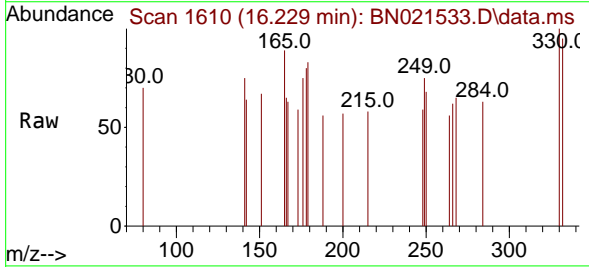


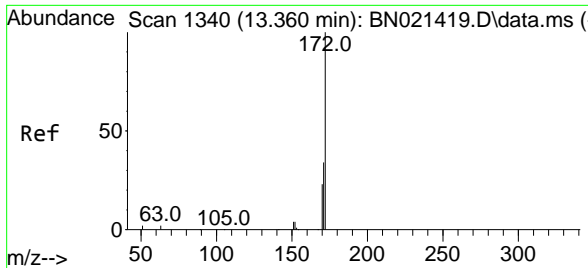
Tgt Ion:164 Resp: 9009
 Ion Ratio Lower Upper
 164 100
 162 107.2 82.2 123.4
 160 53.4 39.5 59.3



#14
 2,4,6-Tribromophenol
 Concen: 0.027 ng
 RT: 16.229 min Scan# 1610
 Delta R.T. 0.010 min
 Lab File: BN021533.D
 Acq: 01 Sep 2022 19:52

Tgt Ion:330 Resp: 81
 Ion Ratio Lower Upper
 330 100
 332 90.1 79.3 118.9
 141 49.4 37.1 55.7



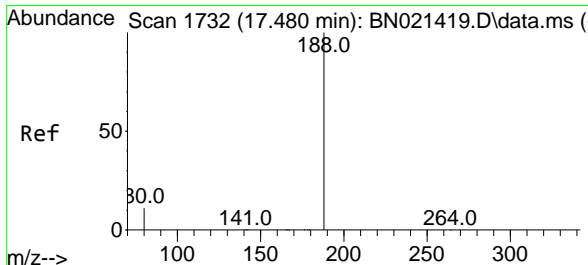
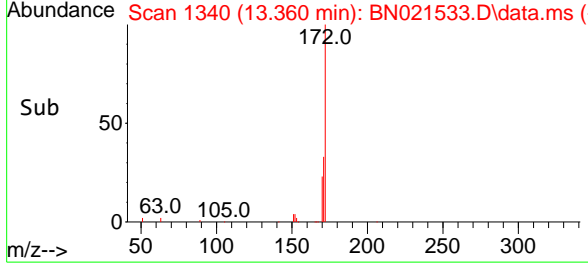
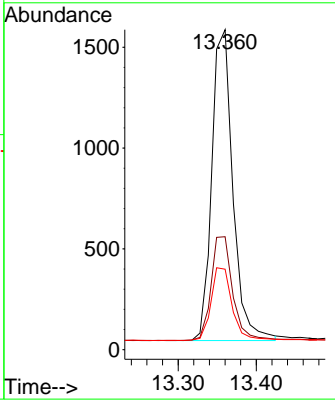
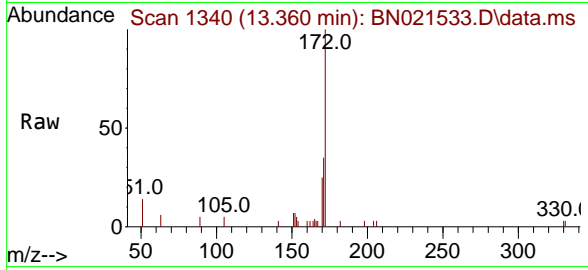


#15
 2-Fluorobiphenyl
 Concen: 0.073 ng
 RT: 13.360 min Scan# 11
 Delta R.T. 0.011 min
 Lab File: BN021533.D
 Acq: 01 Sep 2022 19:52

Instrument : BNA_N
 ClientSampleId : RE125D2-20220824DL

Tgt Ion:172 Resp: 2884

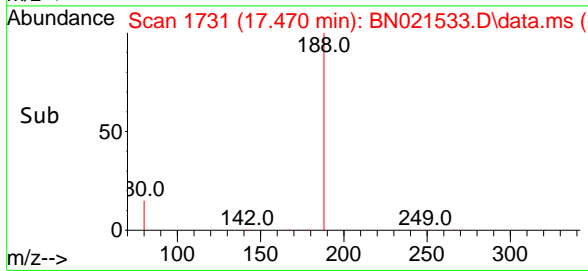
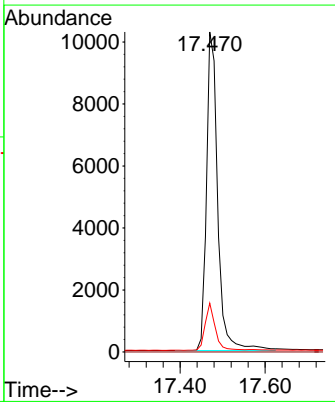
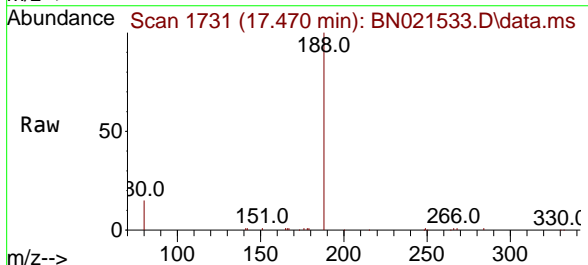
Ion	Ratio	Lower	Upper
172	100		
171	35.3	27.8	41.6
170	25.1	18.6	28.0

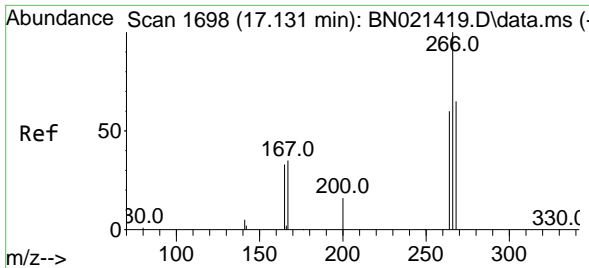


#19
 Phenanthrene-d10
 Concen: 0.400 ng
 RT: 17.470 min Scan# 1731
 Delta R.T. 0.000 min
 Lab File: BN021533.D
 Acq: 01 Sep 2022 19:52

Tgt Ion:188 Resp: 18788

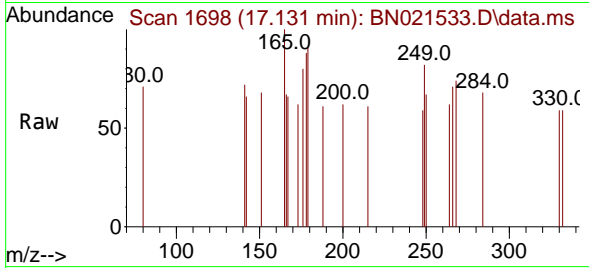
Ion	Ratio	Lower	Upper
188	100		
94	0.0	0.0	0.0
80	15.2	9.5	14.3



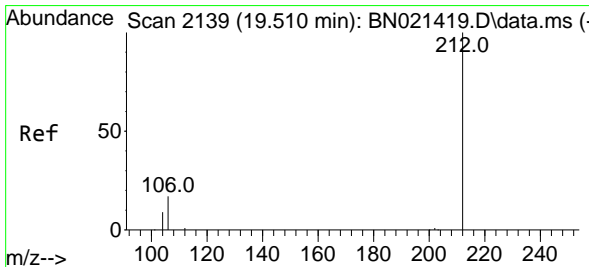
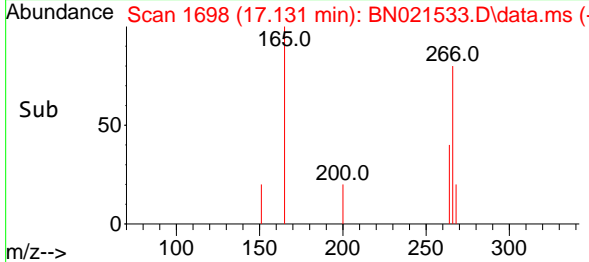
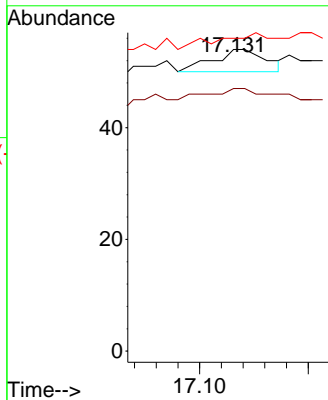


#24
 Pentachlorophenol
 Concen: 0.205 ng
 RT: 17.131 min Scan# 11
 Delta R.T. 0.010 min
 Lab File: BN021533.D
 Acq: 01 Sep 2022 19:52

Instrument :
 BNA_N
 ClientSampleId :
 RE125D2-20220824DL

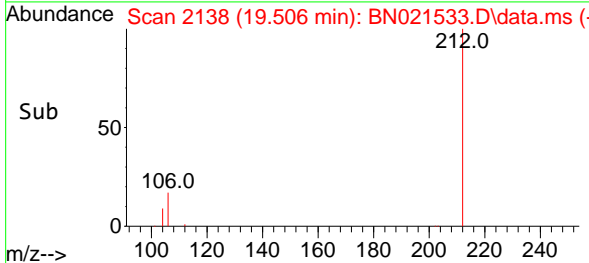
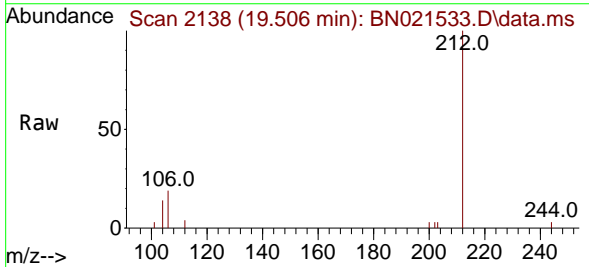
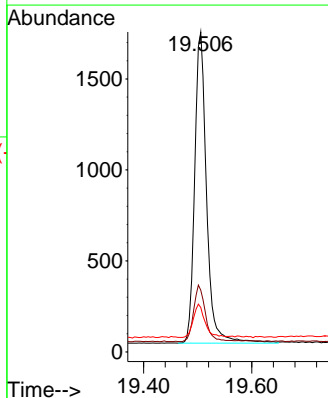


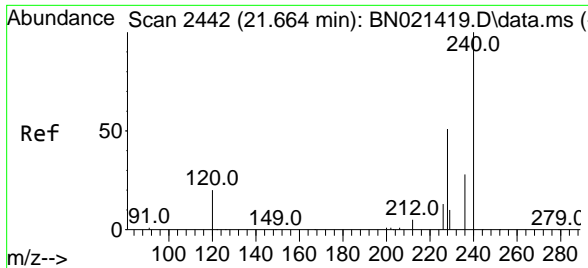
Tgt Ion: 266 Resp: 14
 Ion Ratio Lower Upper
 266 100
 264 50.0 49.0 73.6
 268 0.0 50.9 76.3#



#27
 Fluoranthene-d10
 Concen: 0.054 ng
 RT: 19.506 min Scan# 2138
 Delta R.T. 0.004 min
 Lab File: BN021533.D
 Acq: 01 Sep 2022 19:52

Tgt Ion: 212 Resp: 2613
 Ion Ratio Lower Upper
 212 100
 106 17.9 14.2 21.2
 104 10.4 7.8 11.6



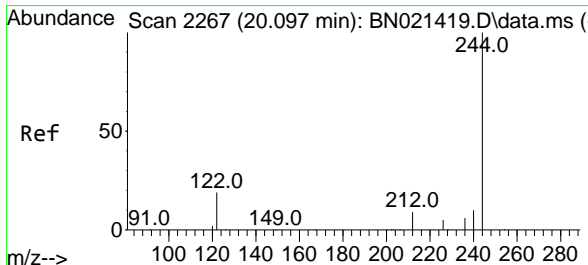
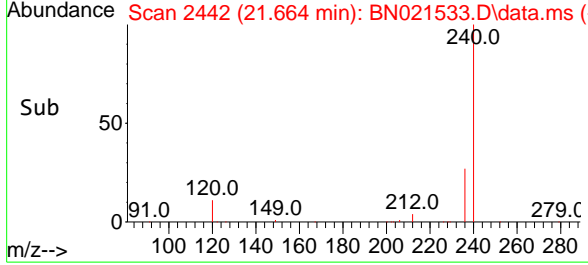
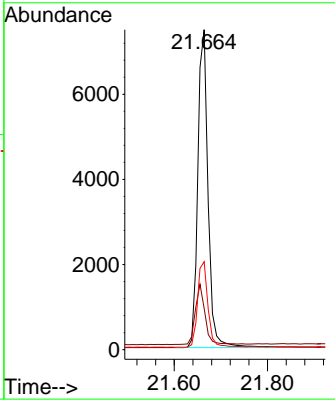
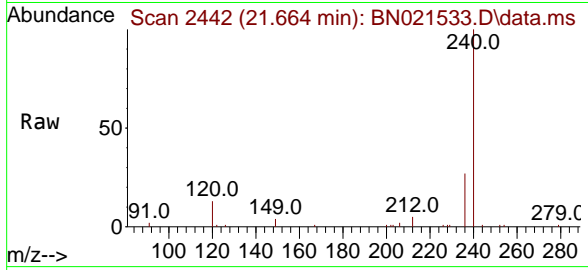


#29
 Chrysene-d12
 Concen: 0.400 ng
 RT: 21.664 min Scan# 2442
 Delta R.T. 0.000 min
 Lab File: BN021533.D
 Acq: 01 Sep 2022 19:52

Instrument : BNA_N
 ClientSampleId : RE125D2-20220824DL

Tgt Ion:240 Resp: 11449

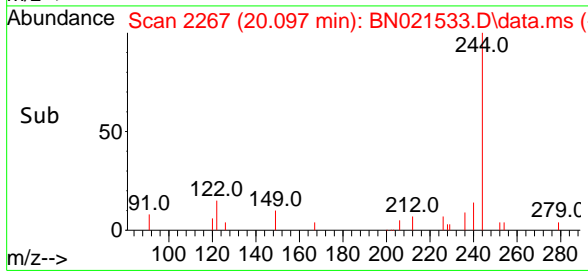
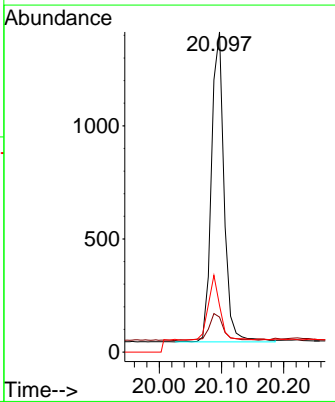
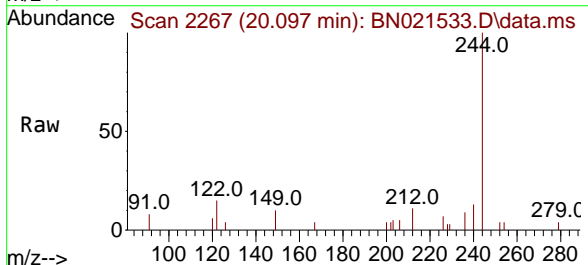
Ion	Ratio	Lower	Upper
240	100		
120	12.9	10.2	15.4
236	27.5	22.1	33.1

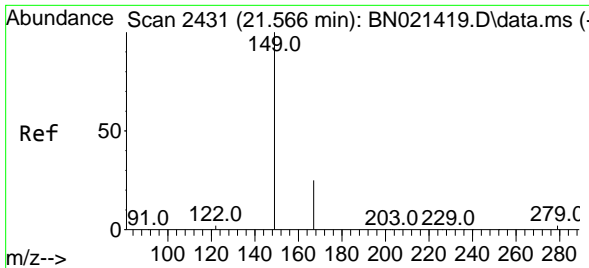


#31
 Terphenyl-d14
 Concen: 0.075 ng
 RT: 20.097 min Scan# 2267
 Delta R.T. 0.000 min
 Lab File: BN021533.D
 Acq: 01 Sep 2022 19:52

Tgt Ion:244 Resp: 1932

Ion	Ratio	Lower	Upper
244	100		
212	11.0	6.5	9.7#
122	14.6	9.1	13.7#

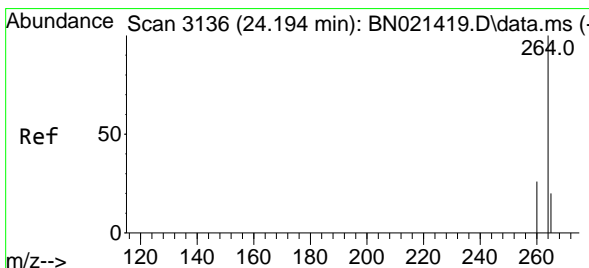
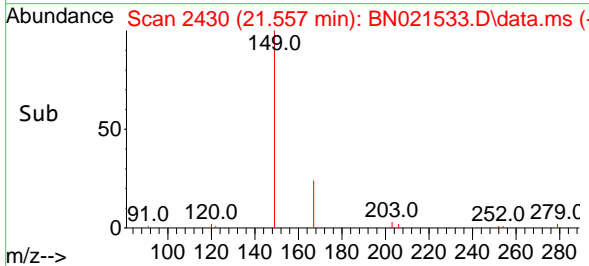
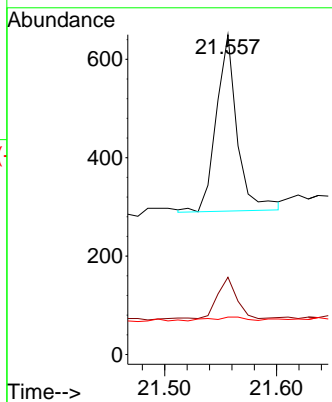
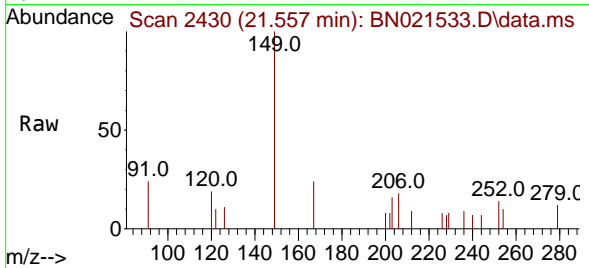




#34
 Bis(2-ethylhexyl)phthalate
 Concen: 0.029 ng
 RT: 21.557 min Scan# 2430
 Delta R.T. 0.000 min
 Lab File: BN021533.D
 Acq: 01 Sep 2022 19:52

Instrument :
 BNA_N
 ClientSampleId :
 RE125D2-20220824DL

Tgt Ion	Resp	Lower	Upper
149	100		
167	25.4	21.4	32.0
279	3.7	2.2	3.2



#35
 Perylene-d12
 Concen: 0.400 ng
 RT: 24.182 min Scan# 3132
 Delta R.T. -0.003 min
 Lab File: BN021533.D
 Acq: 01 Sep 2022 19:52

Tgt Ion	Resp	Lower	Upper
264	100		
260	27.0	21.0	31.6
265	37.8	32.2	48.2

