

Data Path : Z:\svoasrv\HPCHEM1\BNA_N\Data\BN090122\
 Data File : BN021535.D
 Acq On : 01 Sep 2022 21:07
 Operator : CG/JU
 Sample : N4357-20
 Misc :
 ALS Vial : 9 Sample Multiplier: 1

Instrument :
 BNA_N
 ClientSampleId :
 DUP10-20220823

Quant Time: Sep 02 01:00:57 2022
 Quant Method : Z:\SVOASRV\HPCHEM1\BNA_N\METHODS\8270-SIM-BN082922.M
 Quant Title : ASP BNA STANDARDS FOR 5 POINT CALIBRATION
 QLast Update : Fri Sep 02 00:53:31 2022
 Response via : Initial Calibration

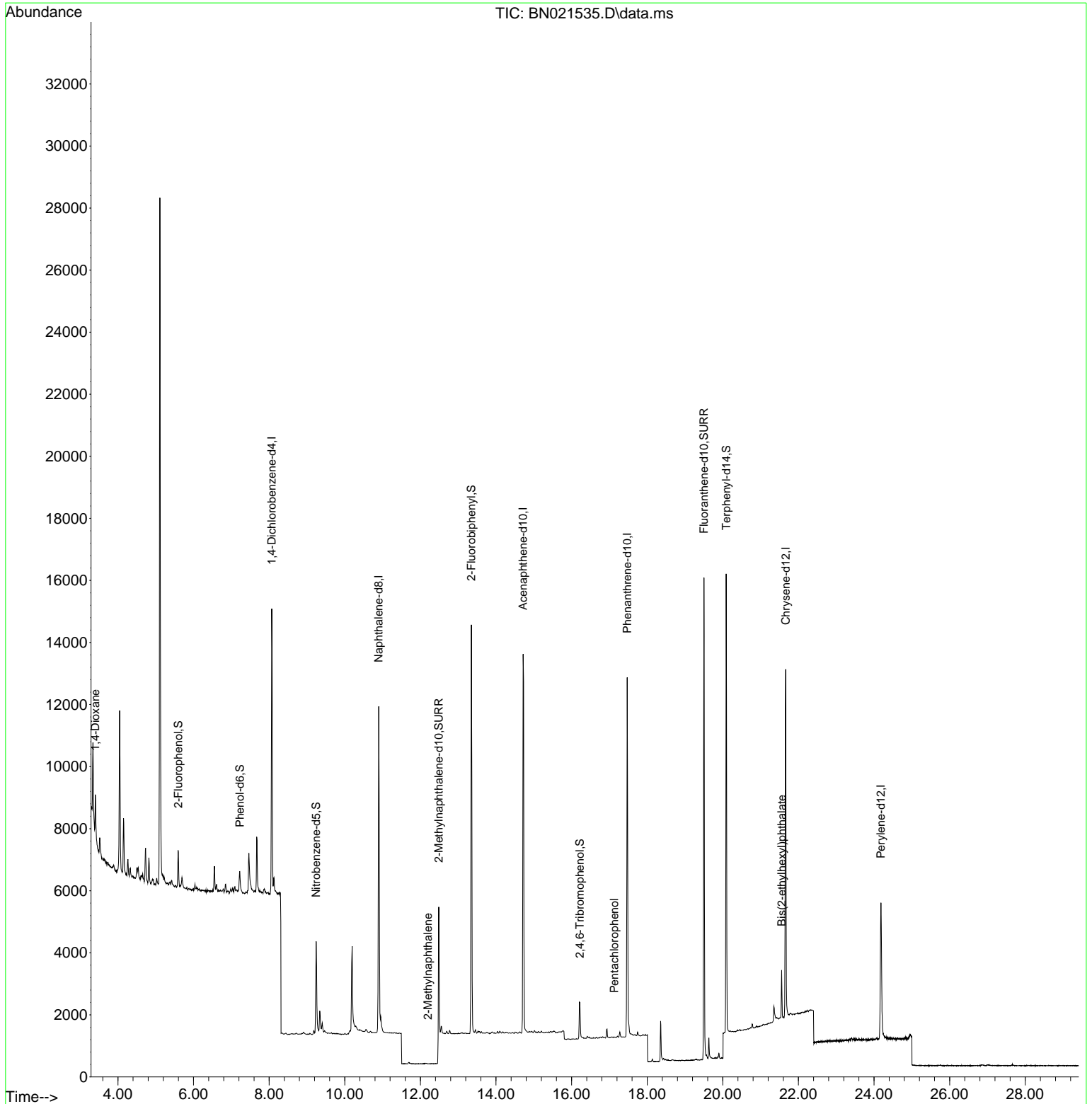
Compound	R.T.	QIon	Response	Conc	Units	Dev(Min)
Internal Standards						
1) 1,4-Dichlorobenzene-d4	8.069	152	4519	0.400	ng	0.00
7) Naphthalene-d8	10.898	136	14179	0.400	ng	0.00
13) Acenaphthene-d10	14.718	164	7721	0.400	ng	0.00
19) Phenanthrene-d10	17.470	188	16127	0.400	ng	# 0.00
29) Chrysene-d12	21.664	240	11044	0.400	ng	0.00
35) Perylene-d12	24.182	264	7271	0.400	ng	0.00
System Monitoring Compounds						
4) 2-Fluorophenol	5.599	112	1057	0.120	ng	0.00
5) Phenol-d6	7.224	99	740	0.066	ng	0.00
8) Nitrobenzene-d5	9.243	82	2813	0.294	ng	0.00
11) 2-Methylnaphthalene-d10	12.486	152	11073	0.346	ng	0.00
14) 2,4,6-Tribromophenol	16.218	330	820	0.323	ng	0.00
15) 2-Fluorobiphenyl	13.349	172	11407	0.338	ng	0.00
27) Fluoranthene-d10	19.501	212	16550	0.399	ng	0.00
31) Terphenyl-d14	20.088	244	12807	0.516	ng	0.00
Target Compounds						
2) 1,4-Dioxane	3.403	88	798	0.141	ng	# 75
12) 2-Methylnaphthalene	12.198	142	1	0.127	ng	# 1
24) Pentachlorophenol	17.131	266	13	0.206	ng	# 53
34) Bis(2-ethylhexyl)phtha...	21.557	149	1473	0.095	ng	# 96

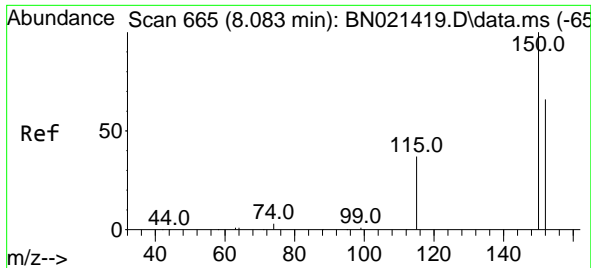
(#) = qualifier out of range (m) = manual integration (+) = signals summed

Data Path : Z:\svoasrv\HPCHEM1\BNA_N\Data\BN090122\
 Data File : BN021535.D
 Acq On : 01 Sep 2022 21:07
 Operator : CG/JU
 Sample : N4357-20
 Misc :
 ALS Vial : 9 Sample Multiplier: 1

Instrument :
 BNA_N
 ClientSampleId :
 DUP10-20220823

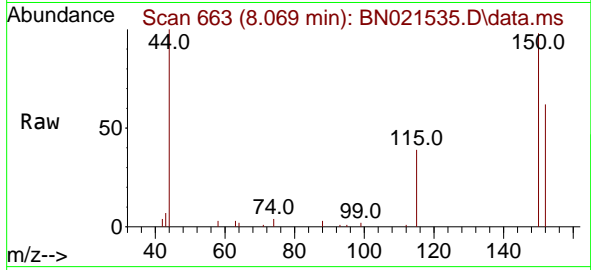
Quant Time: Sep 02 01:00:57 2022
 Quant Method : Z:\SVOASRV\HPCHEM1\BNA_N\METHODS\8270-SIM-BN082922.M
 Quant Title : ASP BNA STANDARDS FOR 5 POINT CALIBRATION
 QLast Update : Fri Sep 02 00:53:31 2022
 Response via : Initial Calibration



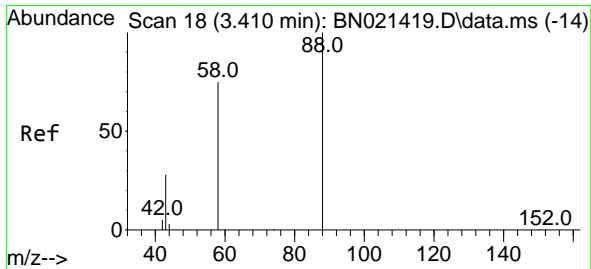
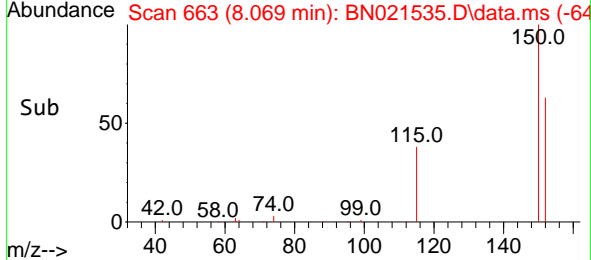
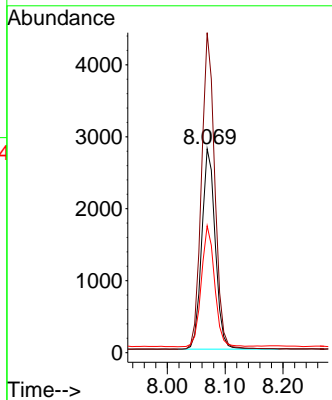


#1
 1,4-Dichlorobenzene-d4
 Concen: 0.400 ng
 RT: 8.069 min Scan# 60
 Delta R.T. -0.000 min
 Lab File: BN021535.D
 Acq: 01 Sep 2022 21:07

Instrument :
 BNA_N
 ClientSampleId :
 DUP10-20220823

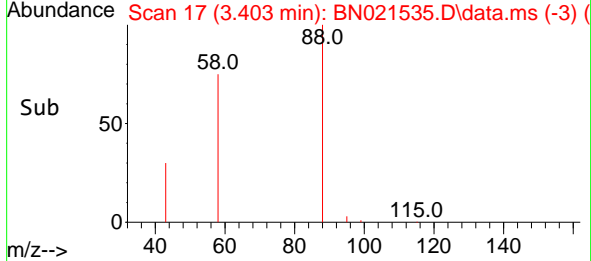
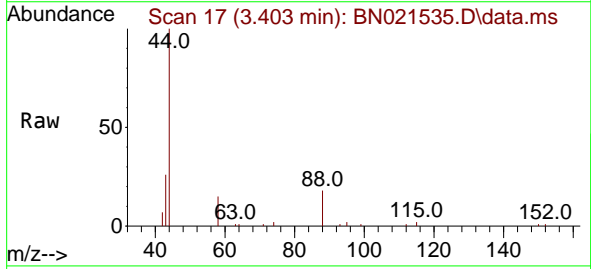
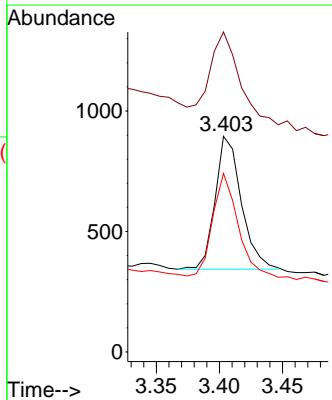


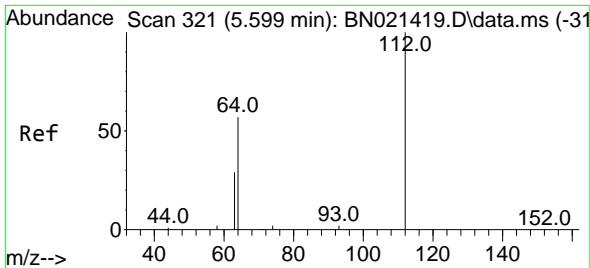
Tgt Ion:152 Resp: 4519
 Ion Ratio Lower Upper
 152 100
 150 156.9 121.4 182.0
 115 62.2 48.6 72.8



#2
 1,4-Dioxane
 Concen: 0.141 ng
 RT: 3.403 min Scan# 17
 Delta R.T. -0.000 min
 Lab File: BN021535.D
 Acq: 01 Sep 2022 21:07

Tgt Ion: 88 Resp: 798
 Ion Ratio Lower Upper
 88 100
 43 81.8 35.8 53.8#
 58 75.4 57.1 85.7



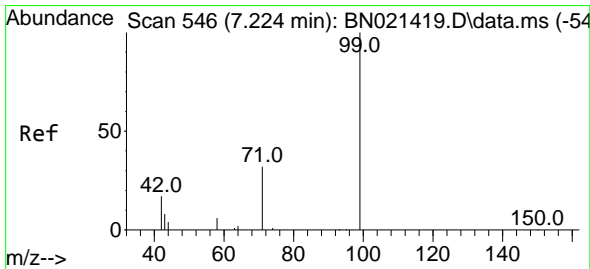
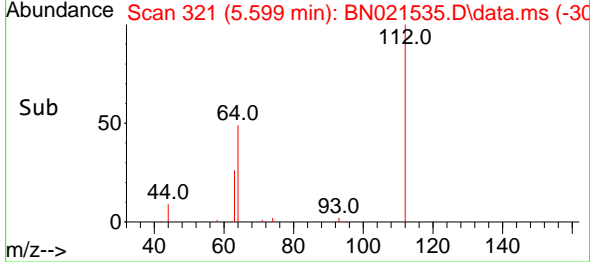
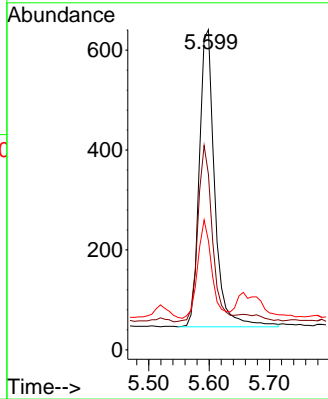
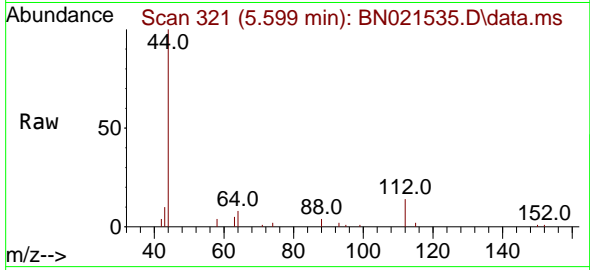


#4
 2-Fluorophenol
 Concen: 0.120 ng
 RT: 5.599 min Scan# 31
 Delta R.T. 0.007 min
 Lab File: BN021535.D
 Acq: 01 Sep 2022 21:07

Instrument :
 BNA_N
 ClientSampleId :
 DUP10-20220823

Tgt Ion: 112 Resp: 1057

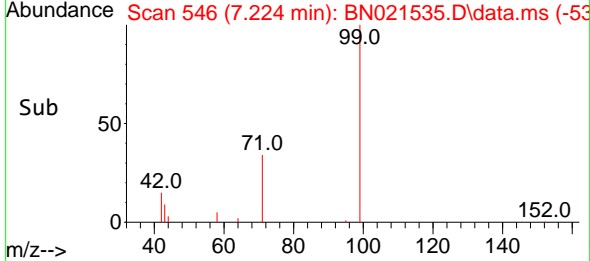
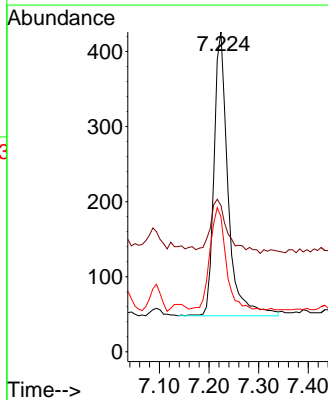
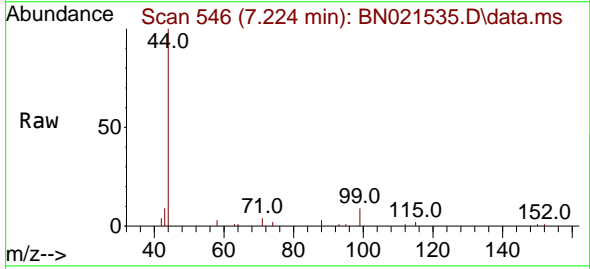
Ion	Ratio	Lower	Upper
112	100		
64	55.5	43.5	65.3
63	30.3	22.6	34.0

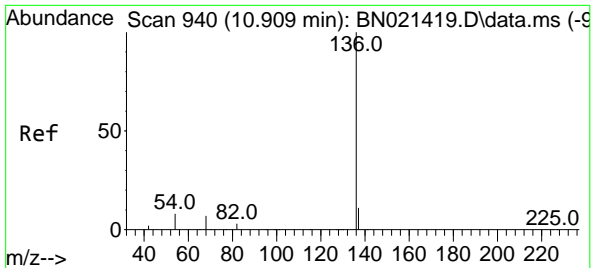


#5
 Phenol-d6
 Concen: 0.066 ng
 RT: 7.224 min Scan# 546
 Delta R.T. 0.007 min
 Lab File: BN021535.D
 Acq: 01 Sep 2022 21:07

Tgt Ion: 99 Resp: 740

Ion	Ratio	Lower	Upper
99	100		
42	23.9	15.5	23.3#
71	41.2	24.2	36.2#



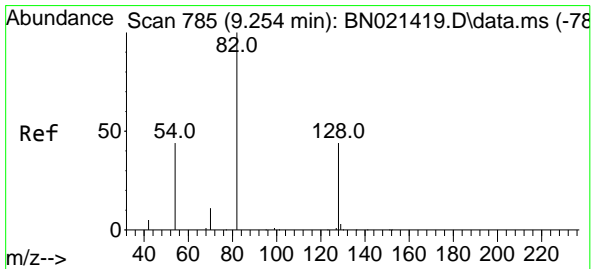
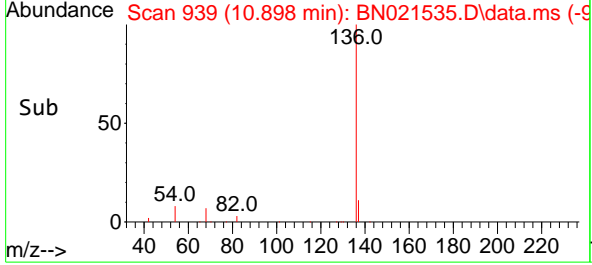
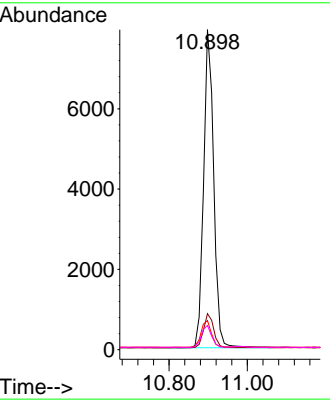
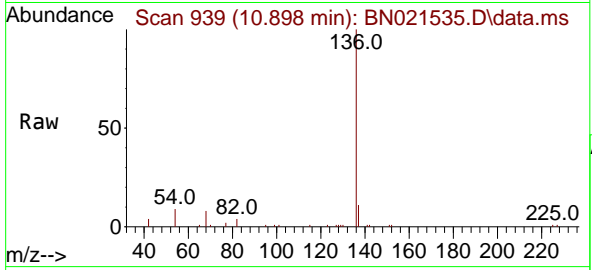


#7
 Naphthalene-d8
 Concen: 0.400 ng
 RT: 10.898 min Scan# 91
 Delta R.T. -0.000 min
 Lab File: BN021535.D
 Acq: 01 Sep 2022 21:07

Instrument : BNA_N
 ClientSampleId : DUP10-20220823

Tgt Ion: 136 Resp: 14179

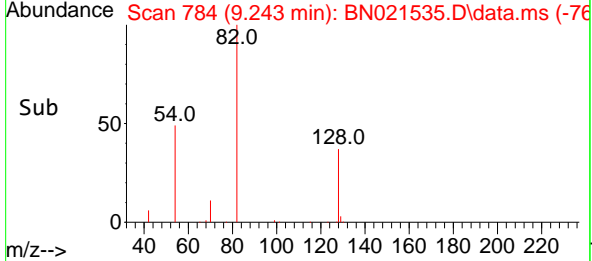
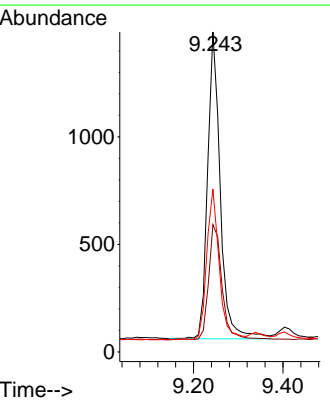
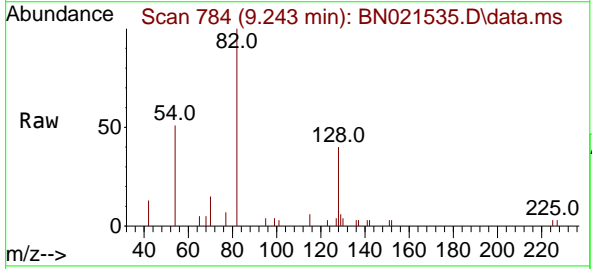
Ion	Ratio	Lower	Upper
136	100		
137	11.3	9.3	13.9
54	9.1	6.9	10.3
68	7.6	6.1	9.1

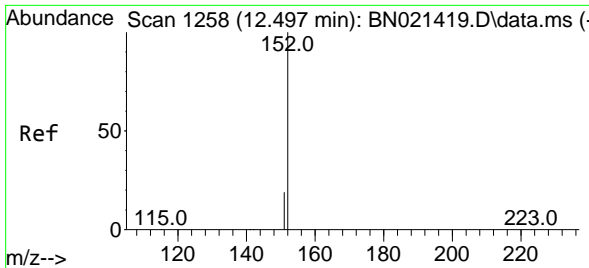


#8
 Nitrobenzene-d5
 Concen: 0.294 ng
 RT: 9.243 min Scan# 784
 Delta R.T. -0.000 min
 Lab File: BN021535.D
 Acq: 01 Sep 2022 21:07

Tgt Ion: 82 Resp: 2813

Ion	Ratio	Lower	Upper
82	100		
128	39.8	30.9	46.3
54	50.9	42.7	64.1

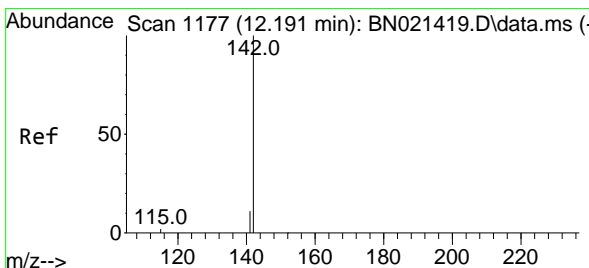
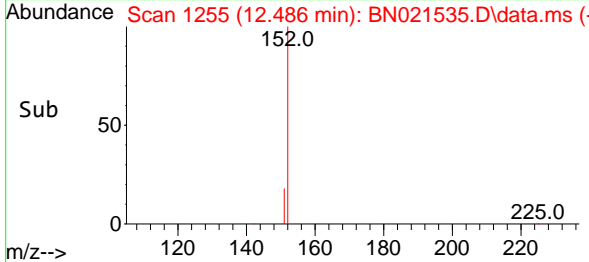
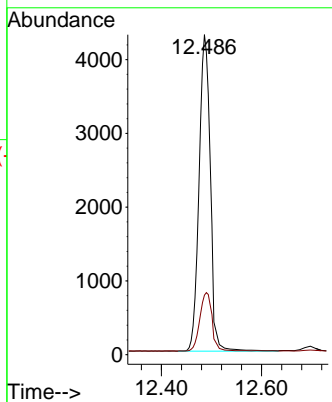
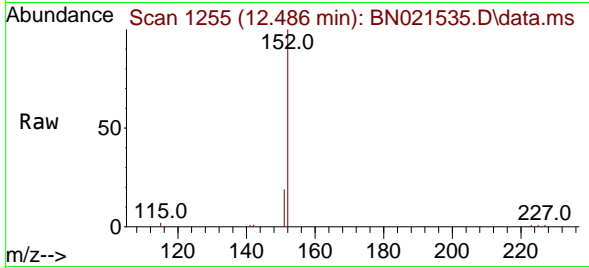




#11
 2-Methylnaphthalene-d10
 Concen: 0.346 ng
 RT: 12.486 min Scan# 1179
 Delta R.T. -0.000 min
 Lab File: BN021535.D
 Acq: 01 Sep 2022 21:07

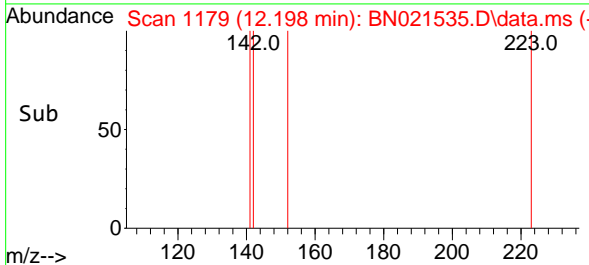
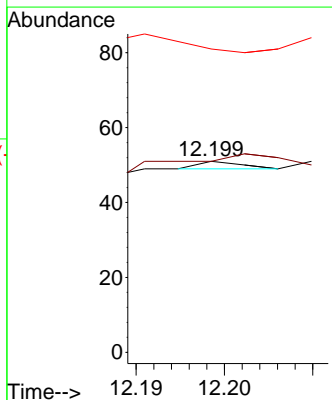
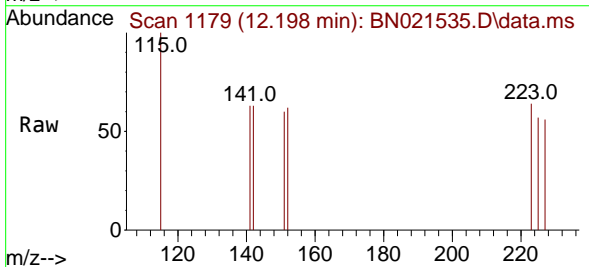
Instrument : BNA_N
 ClientSampleId : DUP10-20220823

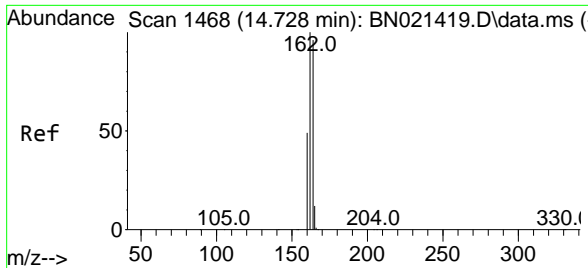
Tgt Ion:152 Resp: 11073
 Ion Ratio Lower Upper
 152 100
 151 20.5 14.5 21.7



#12
 2-Methylnaphthalene
 Concen: 0.127 ng
 RT: 12.198 min Scan# 1179
 Delta R.T. 0.015 min
 Lab File: BN021535.D
 Acq: 01 Sep 2022 21:07

Tgt Ion:142 Resp: 1
 Ion Ratio Lower Upper
 142 100
 141 100.0 12.2 18.2#
 115 158.8 7.9 11.9#



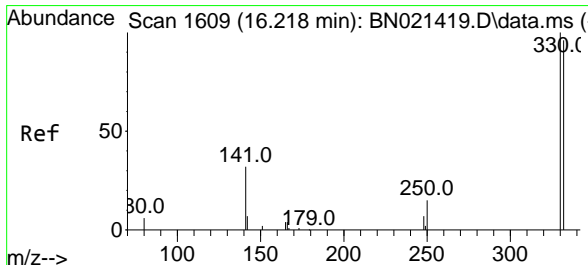
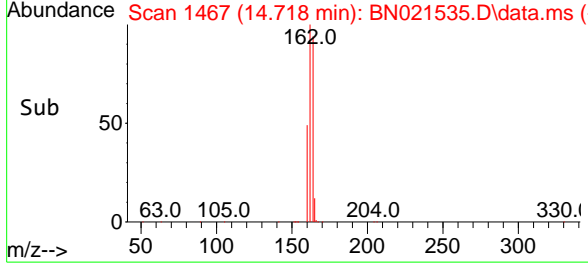
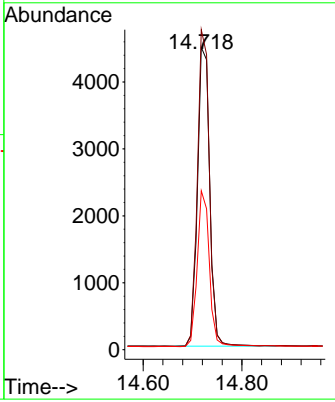
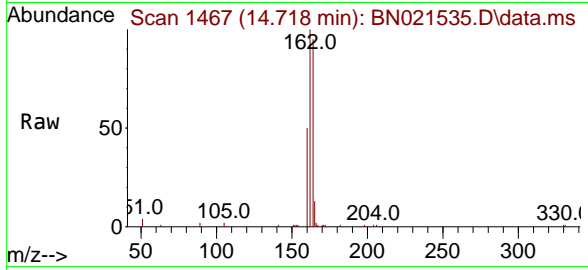


#13
 Acenaphthene-d10
 Concen: 0.400 ng
 RT: 14.718 min Scan# 1467
 Delta R.T. -0.000 min
 Lab File: BN021535.D
 Acq: 01 Sep 2022 21:07

Instrument : BNA_N
 ClientSampleId : DUP10-20220823

Tgt Ion:164 Resp: 7721

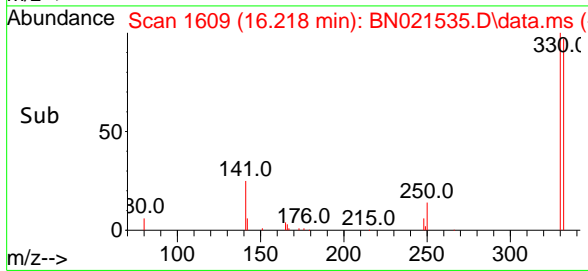
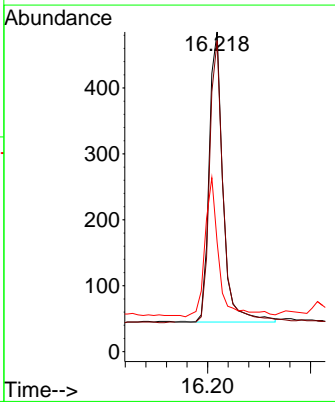
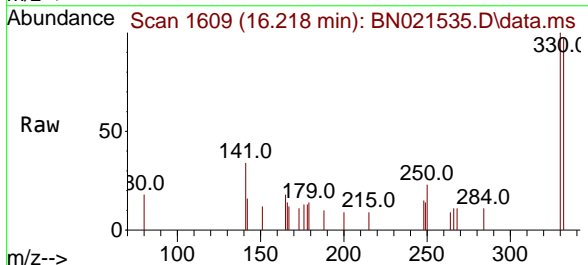
Ion	Ratio	Lower	Upper
164	100		
162	105.8	82.2	123.4
160	52.5	39.5	59.3

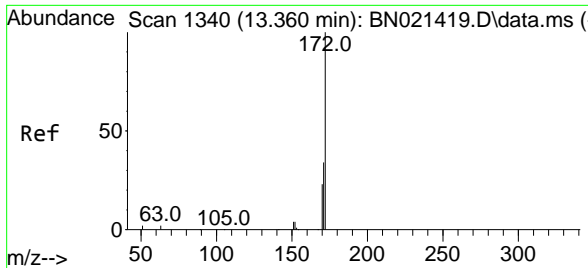


#14
 2,4,6-Tribromophenol
 Concen: 0.323 ng
 RT: 16.218 min Scan# 1609
 Delta R.T. -0.000 min
 Lab File: BN021535.D
 Acq: 01 Sep 2022 21:07

Tgt Ion:330 Resp: 820

Ion	Ratio	Lower	Upper
330	100		
332	95.1	79.3	118.9
141	48.3	37.1	55.7



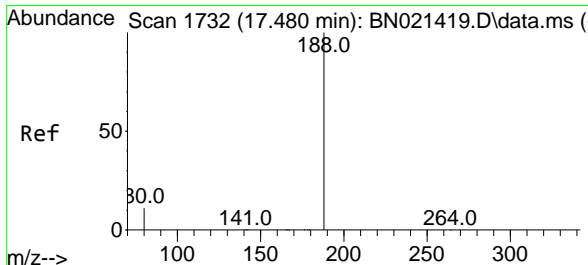
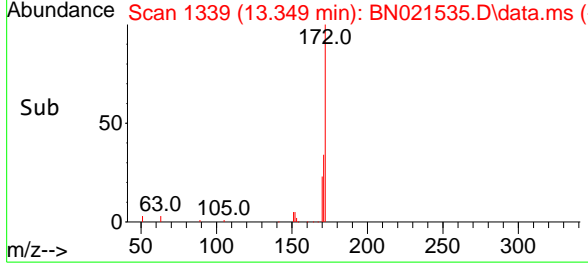
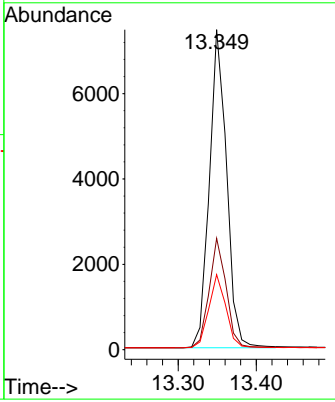
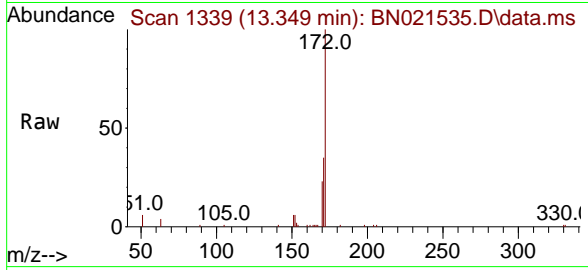


#15
 2-Fluorobiphenyl
 Concen: 0.338 ng
 RT: 13.349 min Scan# 11
 Delta R.T. -0.000 min
 Lab File: BN021535.D
 Acq: 01 Sep 2022 21:07

Instrument : BNA_N
 ClientSampleId : DUP10-20220823

Tgt Ion:172 Resp: 11407

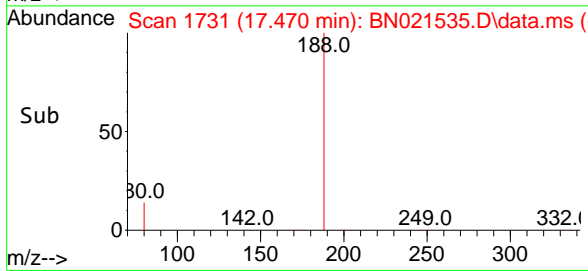
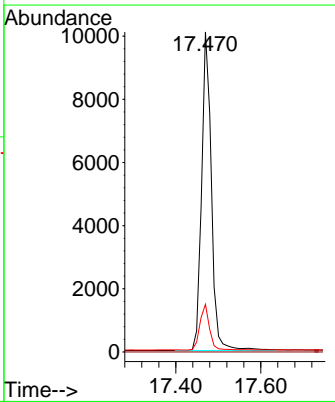
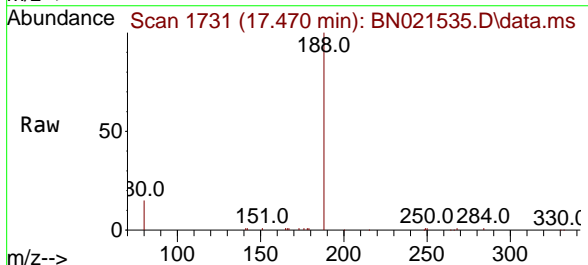
Ion	Ratio	Lower	Upper
172	100		
171	34.8	27.8	41.6
170	23.5	18.6	28.0

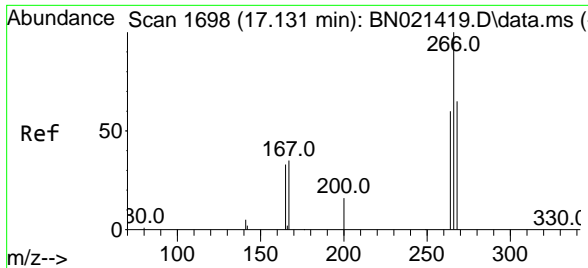


#19
 Phenanthrene-d10
 Concen: 0.400 ng
 RT: 17.470 min Scan# 1731
 Delta R.T. -0.000 min
 Lab File: BN021535.D
 Acq: 01 Sep 2022 21:07

Tgt Ion:188 Resp: 16127

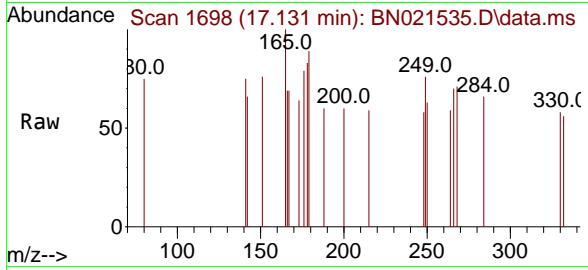
Ion	Ratio	Lower	Upper
188	100		
94	0.0	0.0	0.0
80	14.9	9.5	14.3#





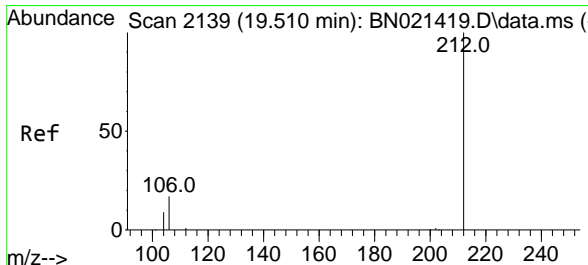
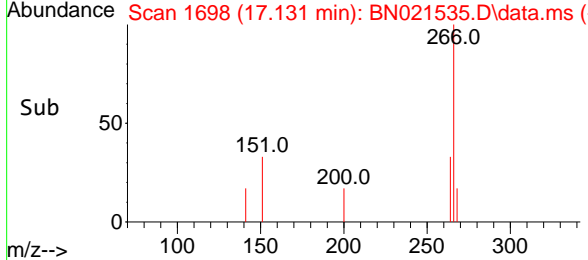
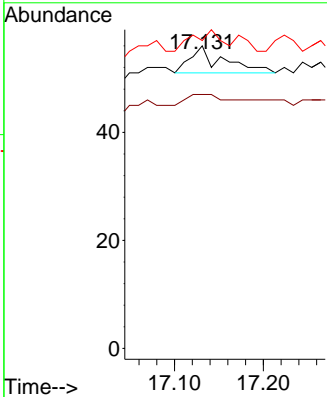
#24
 Pentachlorophenol
 Concen: 0.206 ng
 RT: 17.131 min Scan# 11
 Delta R.T. 0.010 min
 Lab File: BN021535.D
 Acq: 01 Sep 2022 21:07

Instrument : BNA_N
 ClientSampleId : DUP10-20220823



Tgt Ion: 266 Resp: 13

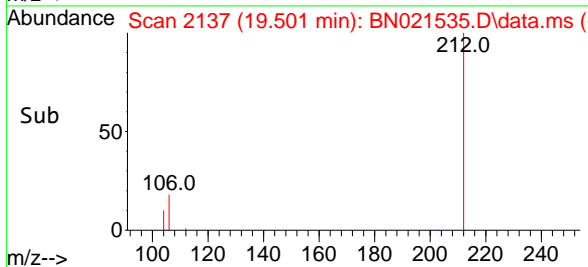
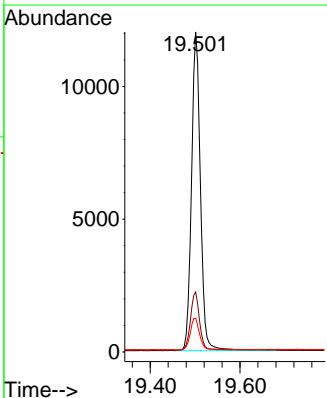
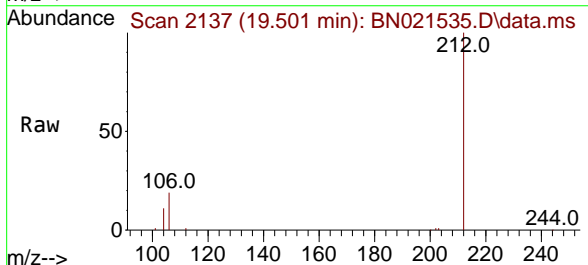
Ion	Ratio	Lower	Upper
266	100		
264	69.2	49.0	73.6
268	0.0	50.9	76.3

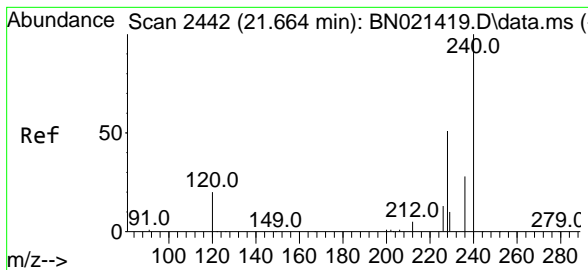


#27
 Fluoranthene-d10
 Concen: 0.399 ng
 RT: 19.501 min Scan# 2137
 Delta R.T. -0.000 min
 Lab File: BN021535.D
 Acq: 01 Sep 2022 21:07

Tgt Ion: 212 Resp: 16550

Ion	Ratio	Lower	Upper
212	100		
106	18.3	14.2	21.2
104	10.2	7.8	11.6

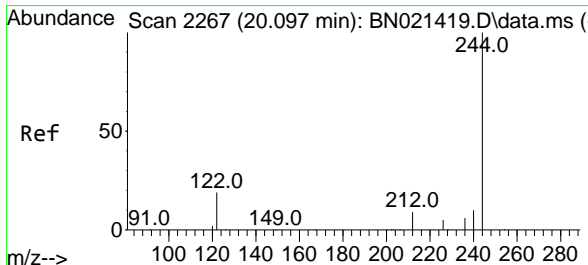
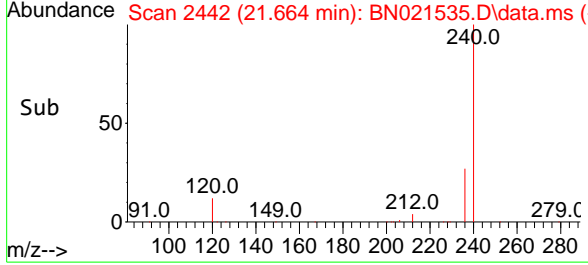
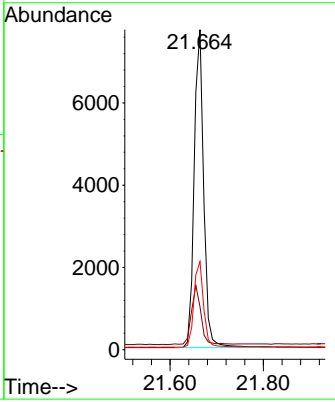
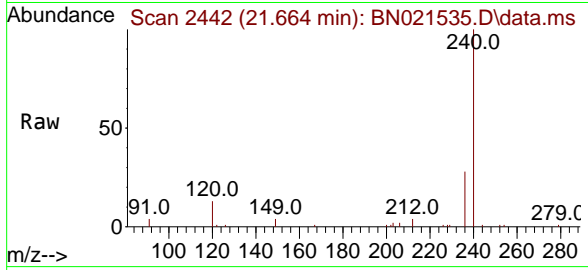




#29
 Chrysene-d12
 Concen: 0.400 ng
 RT: 21.664 min Scan# 24
 Delta R.T. -0.000 min
 Lab File: BN021535.D
 Acq: 01 Sep 2022 21:07

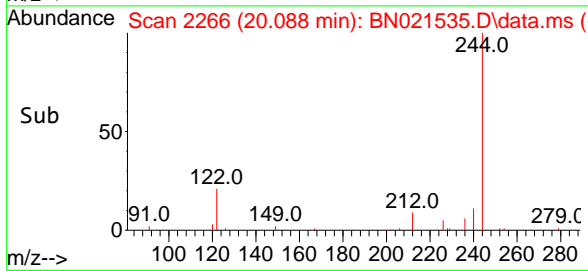
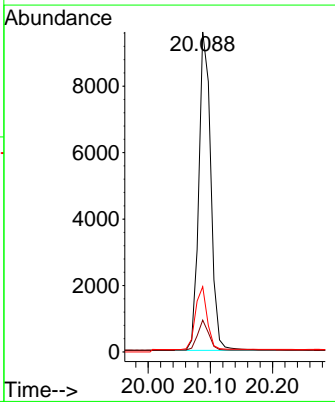
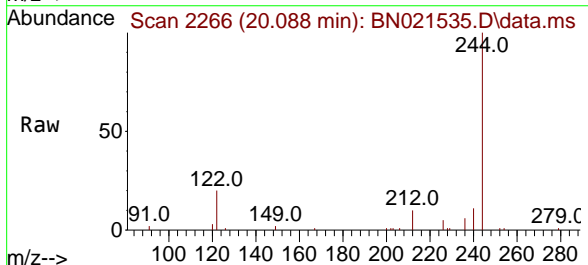
Instrument : BNA_N
 ClientSampleId : DUP10-20220823

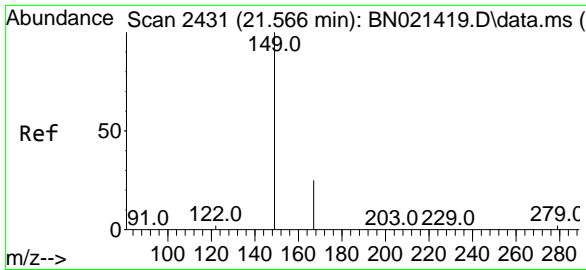
Tgt Ion	Resp	Lower	Upper
240	11044		
120	13.4	10.2	15.4
236	27.6	22.1	33.1



#31
 Terphenyl-d14
 Concen: 0.516 ng
 RT: 20.088 min Scan# 2266
 Delta R.T. -0.009 min
 Lab File: BN021535.D
 Acq: 01 Sep 2022 21:07

Tgt Ion	Resp	Lower	Upper
244	12807		
212	9.9	6.5	9.7#
122	20.4	9.1	13.7#



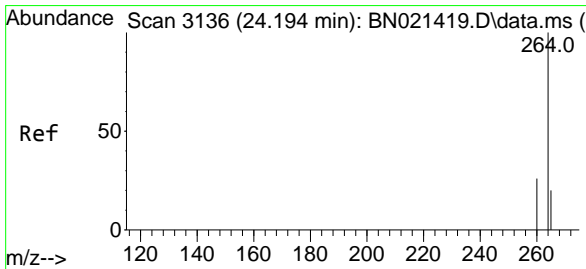
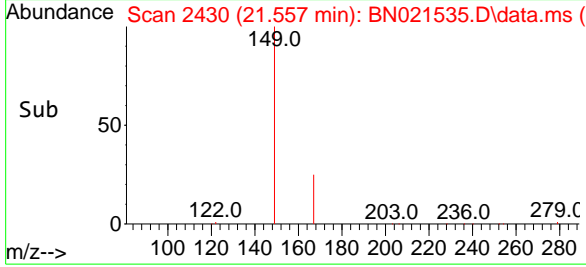
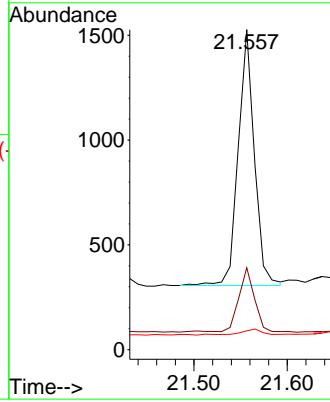
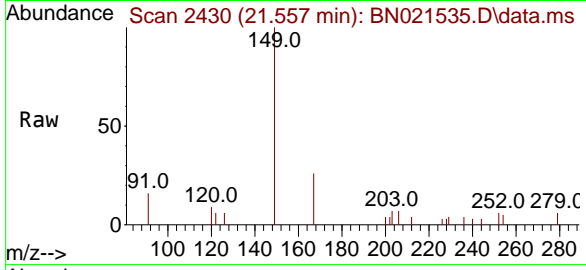


#34
 Bis(2-ethylhexyl)phthalate
 Concen: 0.095 ng
 RT: 21.557 min Scan# 2430
 Delta R.T. -0.000 min
 Lab File: BN021535.D
 Acq: 01 Sep 2022 21:07

Instrument :
 BNA_N
 ClientSampleId :
 DUP10-20220823

Tgt Ion:149 Resp: 1473

Ion	Ratio	Lower	Upper
149	100		
167	24.8	21.4	32.0
279	3.5	2.2	3.2



#35
 Perylene-d12
 Concen: 0.400 ng
 RT: 24.182 min Scan# 3132
 Delta R.T. -0.003 min
 Lab File: BN021535.D
 Acq: 01 Sep 2022 21:07

Tgt Ion:264 Resp: 7271

Ion	Ratio	Lower	Upper
264	100		
260	27.7	21.0	31.6
265	39.0	32.2	48.2

