

Data Path : Z:\svoasrv\HPCHEM1\BNA\_N\Data\BN090122\  
 Data File : BN021547.D  
 Acq On : 02 Sep 2022 05:40  
 Operator : CG/JU  
 Sample : PB147332BL  
 Misc :  
 ALS Vial : 19 Sample Multiplier: 1

Instrument :  
 BNA\_N  
 ClientSampleId :  
 PB147332BL

Quant Time: Sep 02 06:11:50 2022  
 Quant Method : Z:\SVOASRV\HPCHEM1\BNA\_N\METHODS\8270-SIM-BN082922.M  
 Quant Title : ASP BNA STANDARDS FOR 5 POINT CALIBRATION  
 QLast Update : Fri Sep 02 00:53:31 2022  
 Response via : Initial Calibration

Compound	R.T.	QIon	Response	Conc Units	Dev(Min)
Internal Standards					
1) 1,4-Dichlorobenzene-d4	8.069	152	6893	0.400 ng	0.00
7) Naphthalene-d8	10.898	136	21148	0.400 ng	0.00
13) Acenaphthene-d10	14.718	164	11019	0.400 ng	0.00
19) Phenanthrene-d10	17.470	188	23159	0.400 ng	0.00
29) Chrysene-d12	21.655	240	15029	0.400 ng	# 0.00
35) Perylene-d12	24.173	264	12681	0.400 ng	#-0.01
System Monitoring Compounds					
4) 2-Fluorophenol	5.599	112	5902	0.437 ng	0.00
5) Phenol-d6	7.217	99	7065	0.411 ng	0.00
8) Nitrobenzene-d5	9.243	82	4929	0.345 ng	0.00
11) 2-Methylnaphthalene-d10	12.486	152	19597	0.411 ng	0.00
14) 2,4,6-Tribromophenol	16.219	330	702	0.194 ng	0.00
15) 2-Fluorobiphenyl	13.349	172	17106	0.355 ng	0.00
27) Fluoranthene-d10	19.501	212	22619	0.380 ng	0.00
31) Terphenyl-d14	20.088	244	14556	0.431 ng	0.00

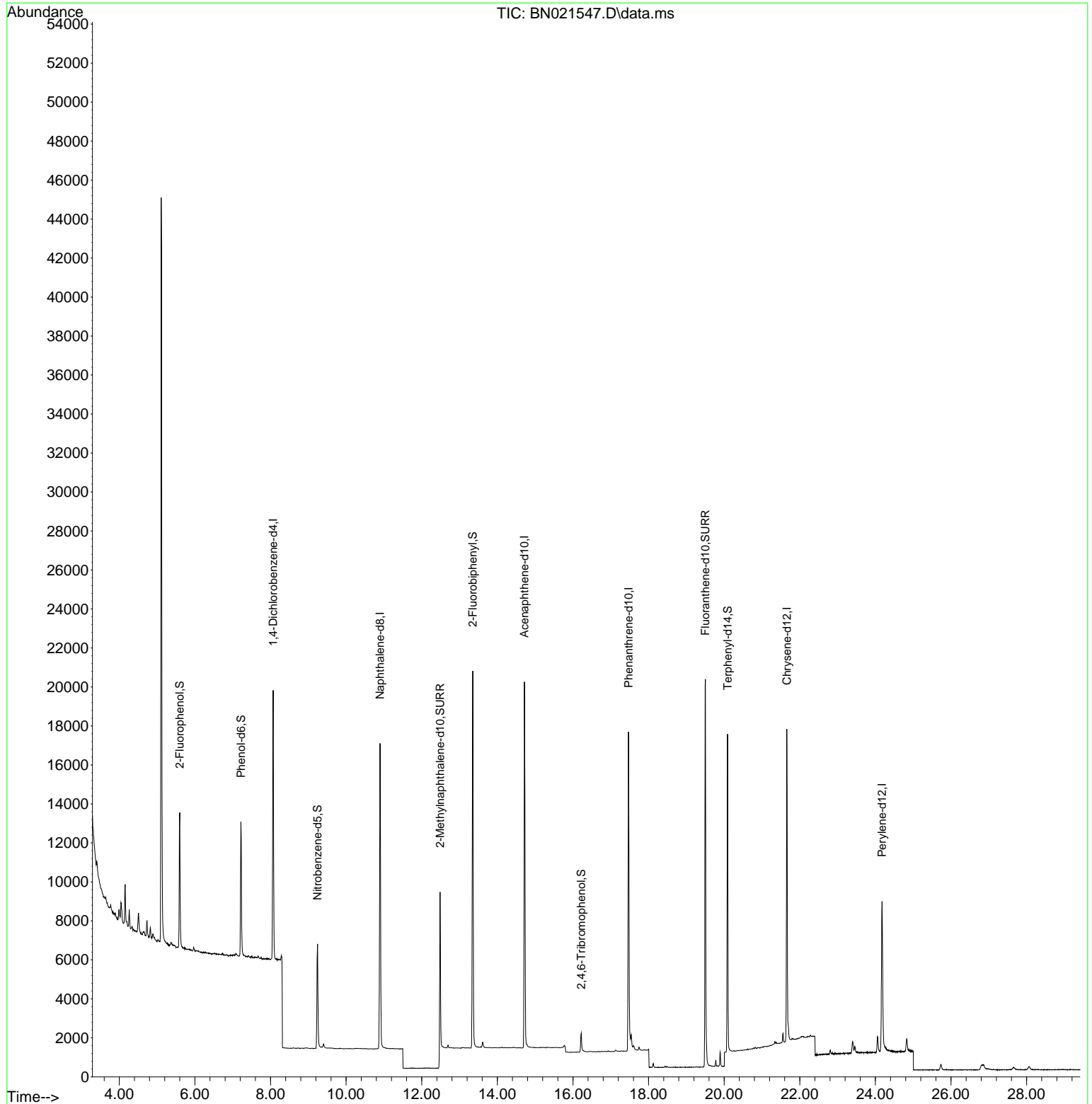
Target Compounds Qvalue

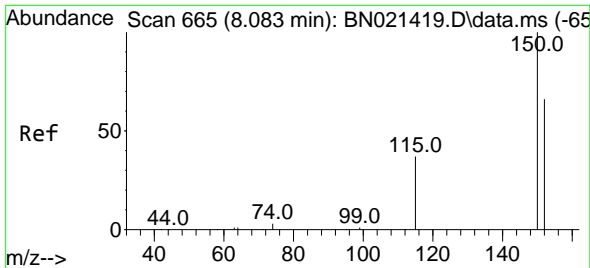
(#) = qualifier out of range (m) = manual integration (+) = signals summed

Data Path : Z:\svoasrv\HPCHEM1\BNA\_N\Data\BN090122\  
Data File : BN021547.D  
Acq On : 02 Sep 2022 05:40  
Operator : CG/JU  
Sample : PB147332BL  
Misc :  
ALS Vial : 19 Sample Multiplier: 1

Instrument :  
BNA\_N  
ClientSampleId :  
PB147332BL

Quant Time: Sep 02 06:11:50 2022  
Quant Method : Z:\SVOASRV\HPCHEM1\BNA\_N\METHODS\8270-SIM-BN082922.M  
Quant Title : ASP BNA STANDARDS FOR 5 POINT CALIBRATION  
QLast Update : Fri Sep 02 00:53:31 2022  
Response via : Initial Calibration

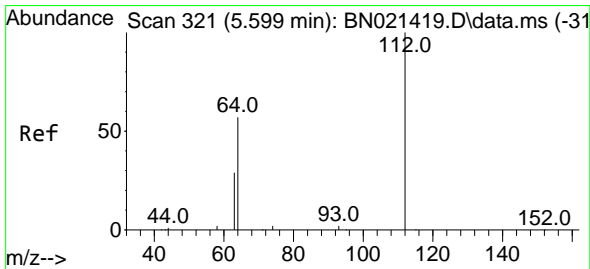
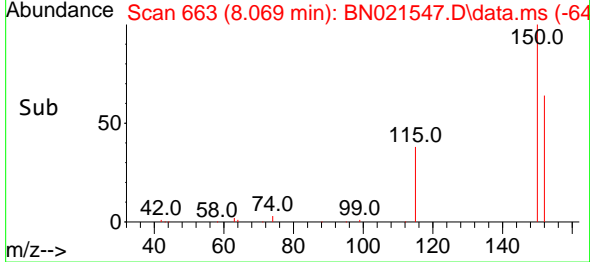
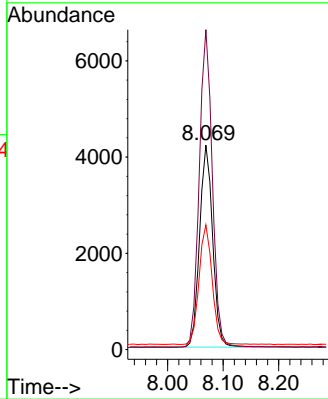
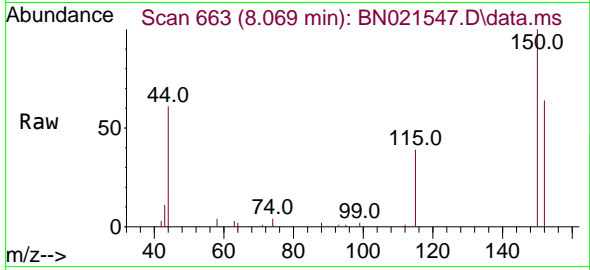




#1  
 1,4-Dichlorobenzene-d4  
 Concen: 0.400 ng  
 RT: 8.069 min Scan# 60  
 Delta R.T. -0.000 min  
 Lab File: BN021547.D  
 Acq: 02 Sep 2022 05:40

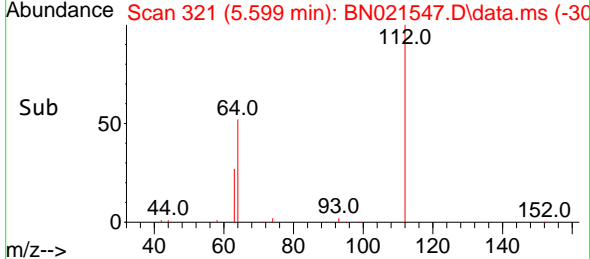
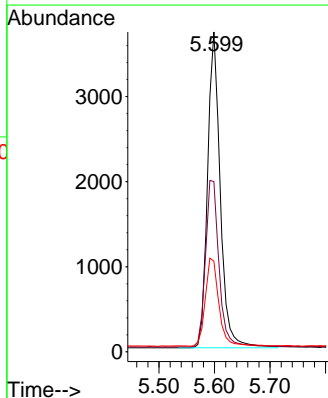
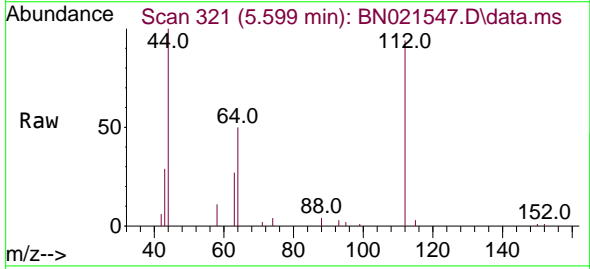
Instrument :  
 BNA\_N  
 ClientSampleId :  
 PB147332BL

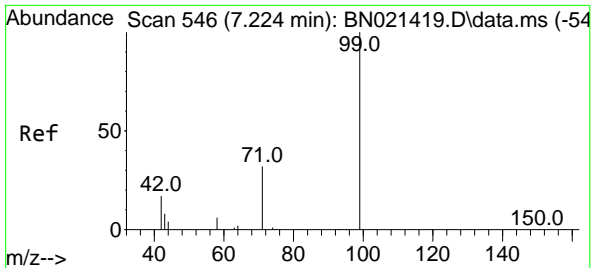
Tgt Ion:152 Resp: 6893  
 Ion Ratio Lower Upper  
 152 100  
 150 156.5 121.4 182.0  
 115 61.0 48.6 72.8



#4  
 2-Fluorophenol  
 Concen: 0.437 ng  
 RT: 5.599 min Scan# 321  
 Delta R.T. 0.007 min  
 Lab File: BN021547.D  
 Acq: 02 Sep 2022 05:40

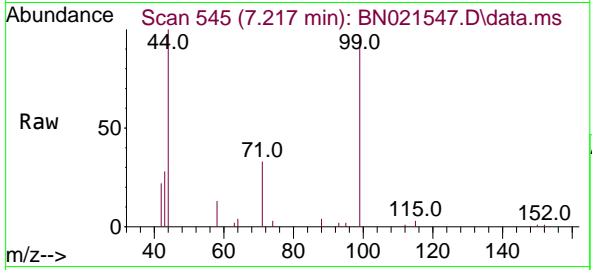
Tgt Ion:112 Resp: 5902  
 Ion Ratio Lower Upper  
 112 100  
 64 56.5 43.5 65.3  
 63 29.8 22.6 34.0





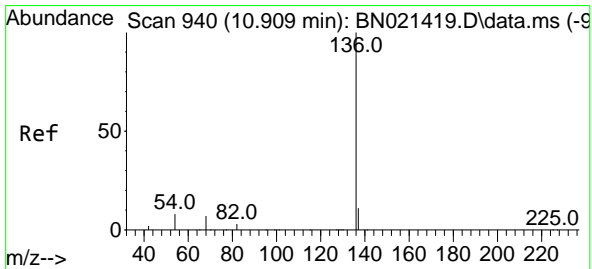
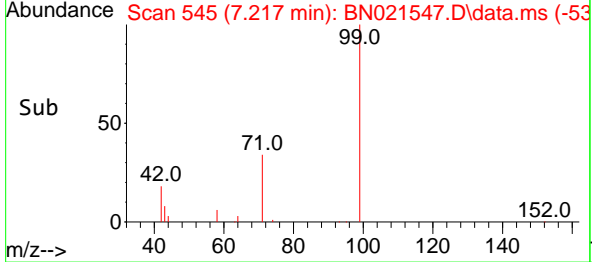
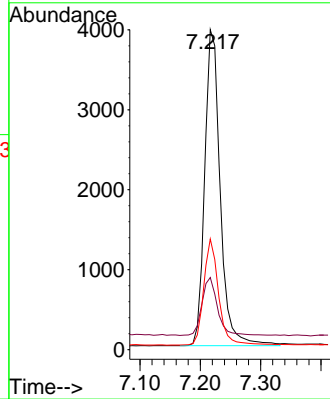
#5  
 Phenol-d6  
 Concen: 0.411 ng  
 RT: 7.217 min Scan# 54  
 Delta R.T. 0.000 min  
 Lab File: BN021547.D  
 Acq: 02 Sep 2022 05:40

Instrument :  
 BNA\_N  
 ClientSampleId :  
 PB147332BL



Tgt Ion: 99 Resp: 7065

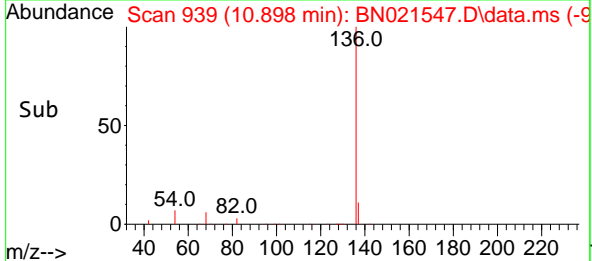
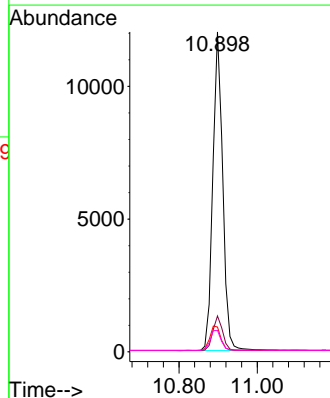
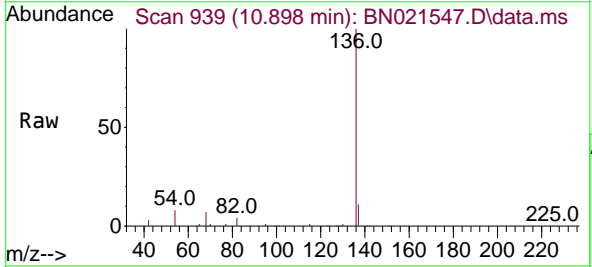
Ion	Ratio	Lower	Upper
99	100		
42	18.3	15.5	23.3
71	32.0	24.2	36.2

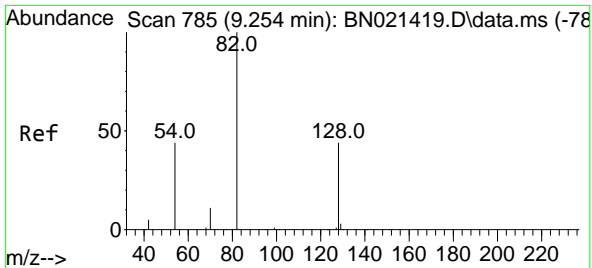


#7  
 Naphthalene-d8  
 Concen: 0.400 ng  
 RT: 10.898 min Scan# 939  
 Delta R.T. 0.000 min  
 Lab File: BN021547.D  
 Acq: 02 Sep 2022 05:40

Tgt Ion: 136 Resp: 21148

Ion	Ratio	Lower	Upper
136	100		
137	11.2	9.3	13.9
54	7.8	6.9	10.3
68	6.7	6.1	9.1



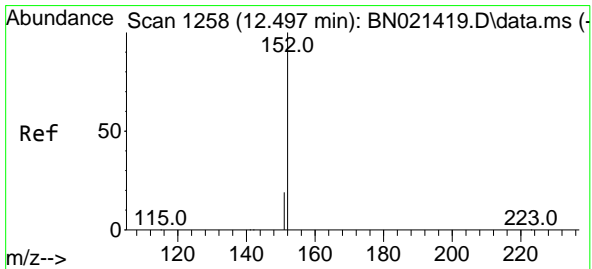
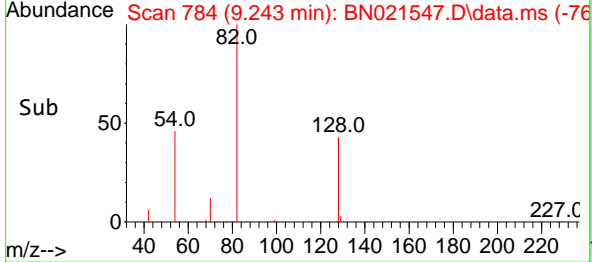
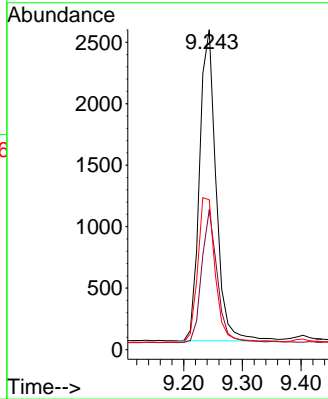
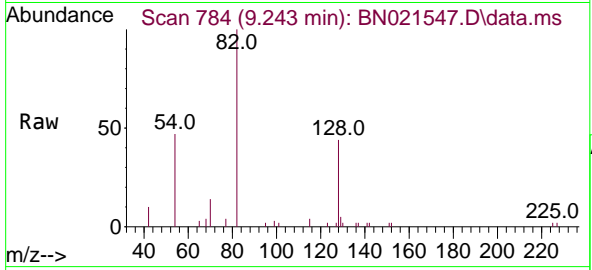


#8  
 Nitrobenzene-d5  
 Concen: 0.345 ng  
 RT: 9.243 min Scan# 784  
 Delta R.T. 0.000 min  
 Lab File: BN021547.D  
 Acq: 02 Sep 2022 05:40

Instrument :  
 BNA\_N  
 ClientSampleId :  
 PB147332BL

Tgt Ion: 82 Resp: 4929

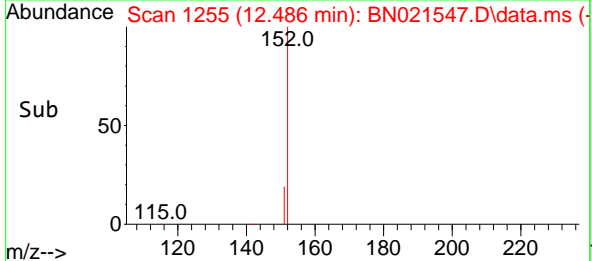
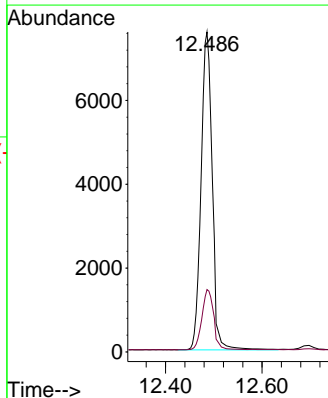
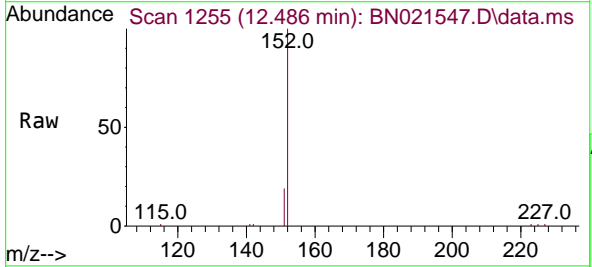
Ion	Ratio	Lower	Upper
82	100		
128	43.6	30.9	46.3
54	46.8	42.7	64.1

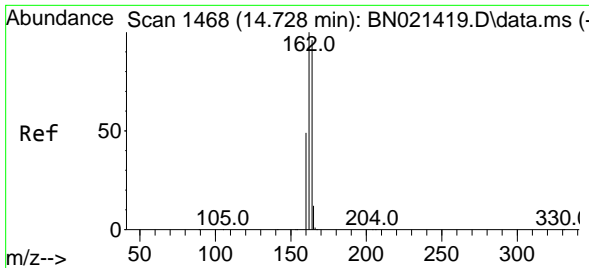


#11  
 2-Methylnaphthalene-d10  
 Concen: 0.411 ng  
 RT: 12.486 min Scan# 1255  
 Delta R.T. 0.000 min  
 Lab File: BN021547.D  
 Acq: 02 Sep 2022 05:40

Tgt Ion: 152 Resp: 19597

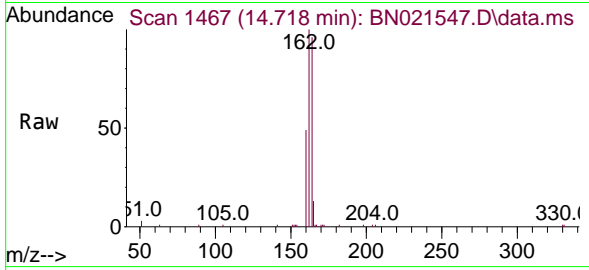
Ion	Ratio	Lower	Upper
152	100		
151	20.4	14.5	21.7





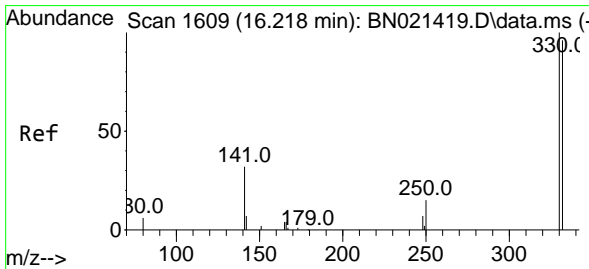
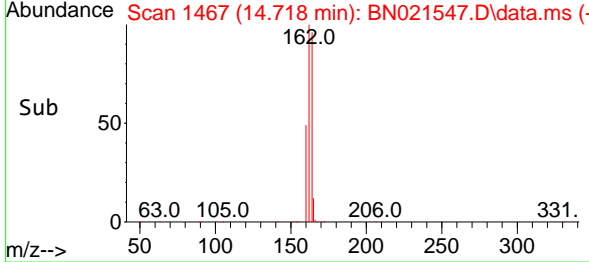
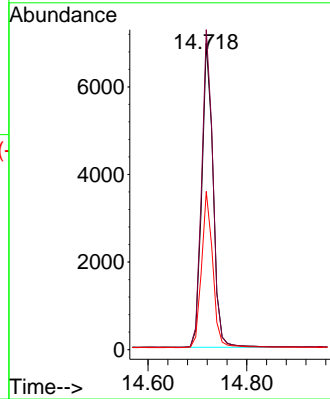
#13  
 Acenaphthene-d10  
 Concen: 0.400 ng  
 RT: 14.718 min Scan# 14  
 Delta R.T. 0.000 min  
 Lab File: BN021547.D  
 Acq: 02 Sep 2022 05:40

Instrument :  
 BNA\_N  
 ClientSampleId :  
 PB147332BL



Tgt Ion:164 Resp: 11019

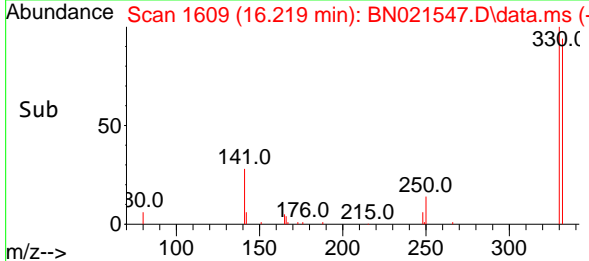
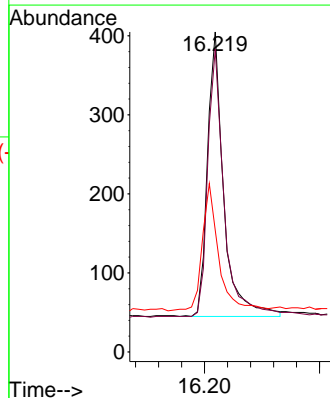
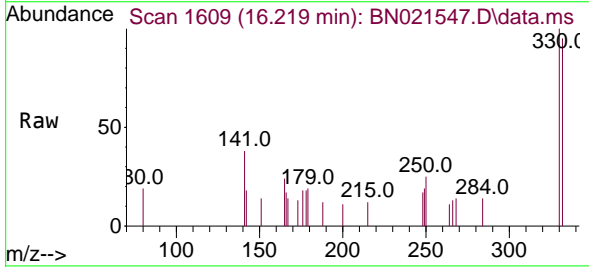
Ion	Ratio	Lower	Upper
164	100		
162	104.5	82.2	123.4
160	51.6	39.5	59.3

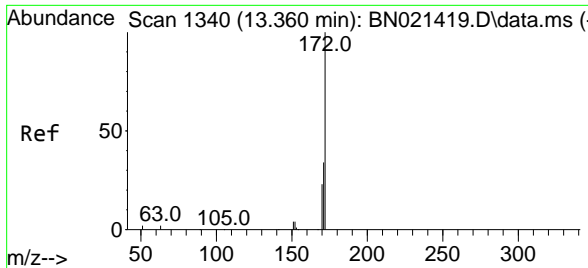


#14  
 2,4,6-Tribromophenol  
 Concen: 0.194 ng  
 RT: 16.219 min Scan# 1609  
 Delta R.T. 0.000 min  
 Lab File: BN021547.D  
 Acq: 02 Sep 2022 05:40

Tgt Ion:330 Resp: 702

Ion	Ratio	Lower	Upper
330	100		
332	95.0	79.3	118.9
141	45.7	37.1	55.7



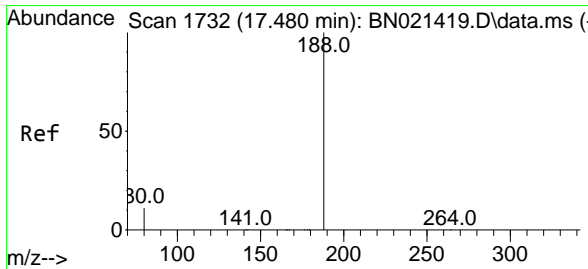
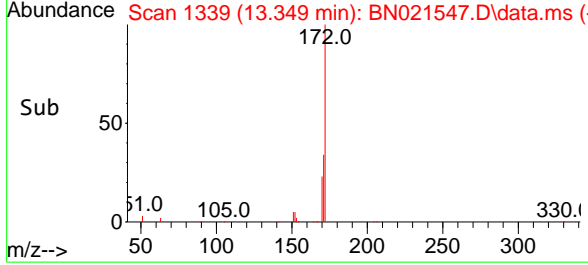
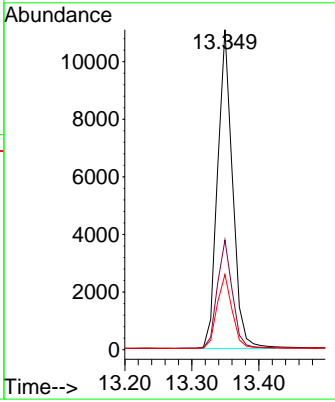
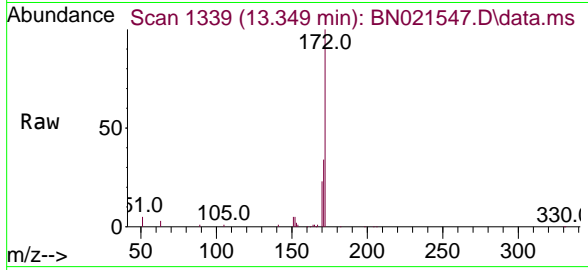


#15  
 2-Fluorobiphenyl  
 Concen: 0.355 ng  
 RT: 13.349 min Scan# 1339  
 Delta R.T. 0.000 min  
 Lab File: BN021547.D  
 Acq: 02 Sep 2022 05:40

Instrument : BNA\_N  
 ClientSampleId : PB147332BL

Tgt Ion:172 Resp: 17106

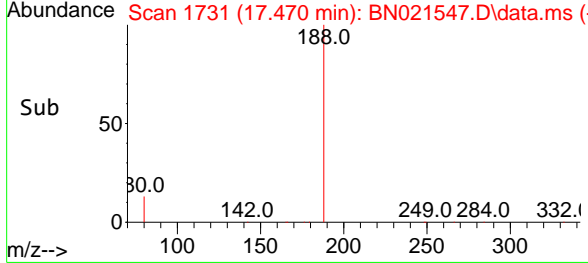
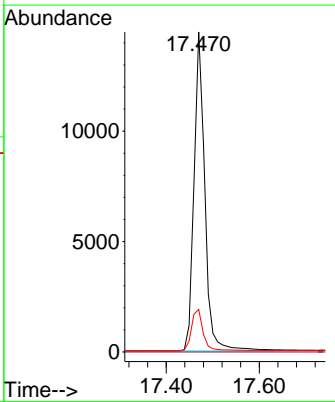
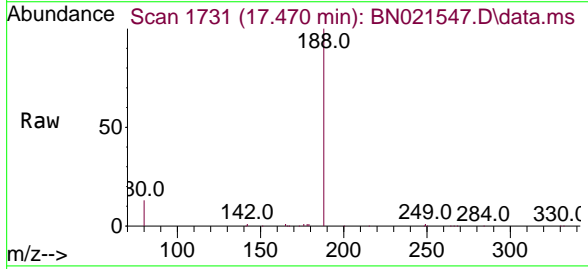
Ion	Ratio	Lower	Upper
172	100		
171	34.3	27.8	41.6
170	23.5	18.6	28.0

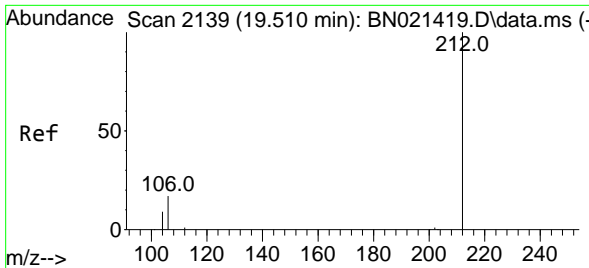


#19  
 Phenanthrene-d10  
 Concen: 0.400 ng  
 RT: 17.470 min Scan# 1731  
 Delta R.T. 0.000 min  
 Lab File: BN021547.D  
 Acq: 02 Sep 2022 05:40

Tgt Ion:188 Resp: 23159

Ion	Ratio	Lower	Upper
188	100		
94	0.0	0.0	0.0
80	13.3	9.5	14.3



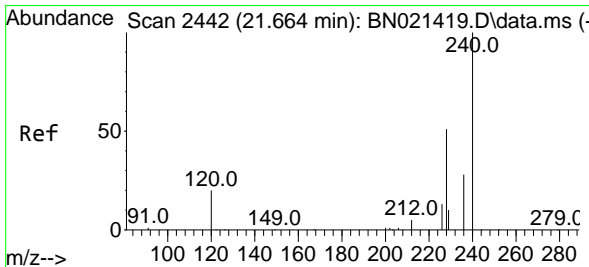
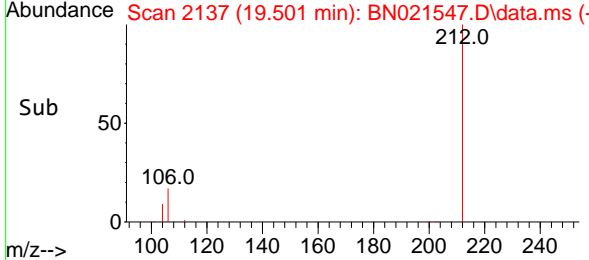
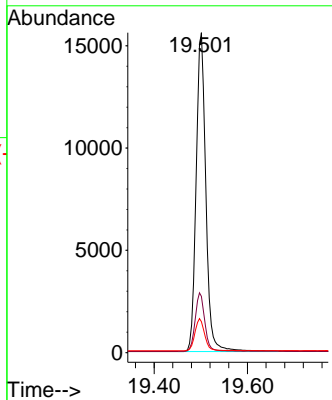
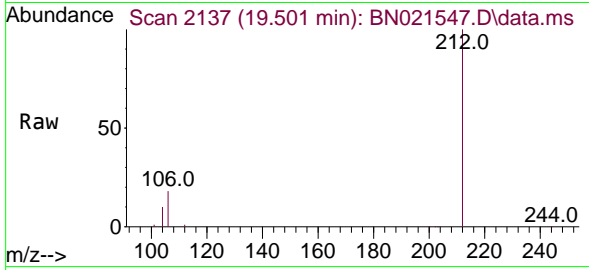


#27  
 Fluoranthene-d10  
 Concen: 0.380 ng  
 RT: 19.501 min Scan# 2137  
 Delta R.T. 0.000 min  
 Lab File: BN021547.D  
 Acq: 02 Sep 2022 05:40

Instrument :  
 BNA\_N  
 ClientSampleId :  
 PB147332BL

Tgt Ion: 212 Resp: 22619

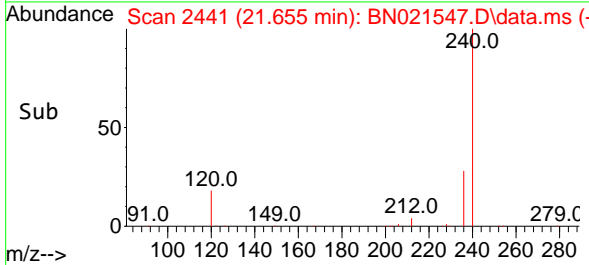
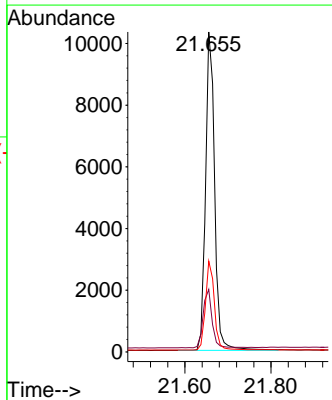
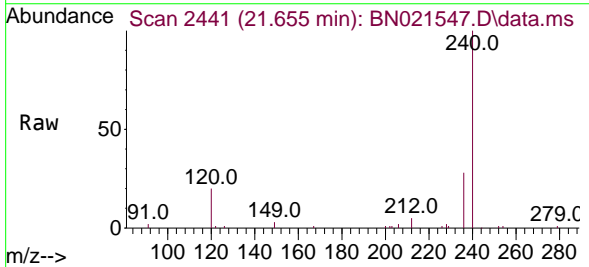
Ion	Ratio	Lower	Upper
212	100		
106	18.2	14.2	21.2
104	10.1	7.8	11.6



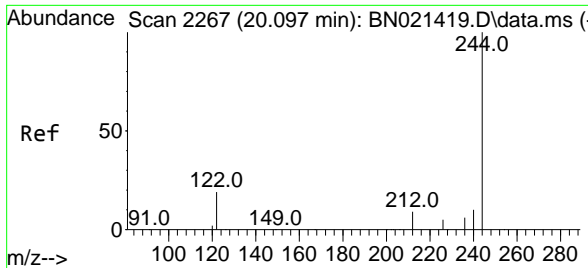
#29  
 Chrysene-d12  
 Concen: 0.400 ng  
 RT: 21.655 min Scan# 2441  
 Delta R.T. -0.009 min  
 Lab File: BN021547.D  
 Acq: 02 Sep 2022 05:40

Tgt Ion: 240 Resp: 15029

Ion	Ratio	Lower	Upper
240	100		
120	19.5	10.2	15.4
236	28.4	22.1	33.1



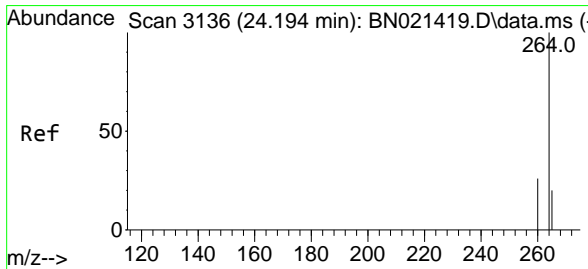
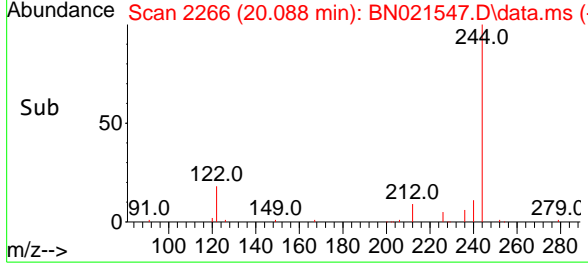
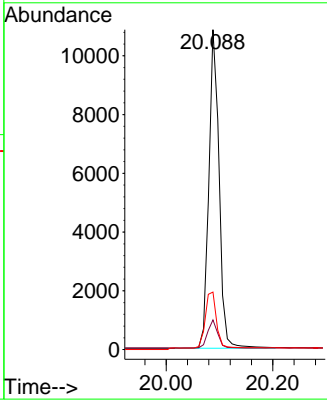
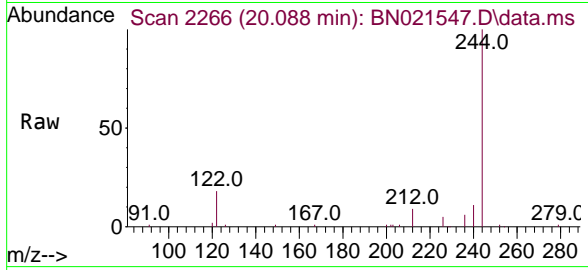




#31  
 Terphenyl-d14  
 Concen: 0.431 ng  
 RT: 20.088 min Scan# 21  
 Delta R.T. -0.009 min  
 Lab File: BN021547.D  
 Acq: 02 Sep 2022 05:40

Instrument : BNA\_N  
 Client Sample Id : PB147332BL

Tgt Ion	Resp	Lower	Upper
244	14556		
212	9.3	6.5	9.7
122	18.0	9.1	13.7#



#35  
 Perylene-d12  
 Concen: 0.400 ng  
 RT: 24.173 min Scan# 3129  
 Delta R.T. -0.012 min  
 Lab File: BN021547.D  
 Acq: 02 Sep 2022 05:40

Tgt Ion	Resp	Lower	Upper
264	12681		
260	26.1	21.0	31.6
265	31.2	32.2	48.2#

