

Data Path : Z:\svoasrv\HPCHEM1\BNA\_N\Data\BN091022\  
 Data File : BN021673.D  
 Acq On : 09 Sep 2022 22:42  
 Operator : CG/JU  
 Sample : N4492-11  
 Misc :  
 ALS Vial : 14 Sample Multiplier: 1

**Instrument :**  
 BNA\_N  
**ClientSampleId :**  
 MW-02-4-14-090122

**Manual Integrations**  
**APPROVED**  
 Reviewed By :Christian Giraldo 09/12/2022  
 Supervised By :Jagrut Upadhyay 09/12/2022

Quant Time: Sep 09 23:24:19 2022  
 Quant Method : Z:\SVOASRV\HPCHEM1\BNA\_N\METHODS\8270-SIM-BN082922.M  
 Quant Title : ASP BNA STANDARDS FOR 5 POINT CALIBRATION  
 QLast Update : Fri Sep 09 23:19:14 2022  
 Response via : Initial Calibration

Compound	R.T.	QIon	Response	Conc	Units	Dev(Min)
<b>Internal Standards</b>						
1) 1,4-Dichlorobenzene-d4	8.062	152	4973	0.400	ng	0.00
7) Naphthalene-d8	10.888	136	16004	0.400	ng	-0.01
13) Acenaphthene-d10	14.718	164	9122	0.400	ng	0.00
19) Phenanthrene-d10	17.460	188	18310	0.400	ng	#-0.01
29) Chrysene-d12	21.646	240	12065	0.400	ng	# 0.00
35) Perylene-d12	24.159	264	8584	0.400	ng	-0.01
<b>System Monitoring Compounds</b>						
4) 2-Fluorophenol	5.592	112	1970	0.202	ng	0.00
5) Phenol-d6	7.217	99	1630	0.131	ng	0.00
8) Nitrobenzene-d5	9.233	82	3887m	0.360	ng	0.00
11) 2-Methylnaphthalene-d10	12.478	152	13158	0.365	ng	0.00
14) 2,4,6-Tribromophenol	16.208	330	1287	0.430	ng	0.00
15) 2-Fluorobiphenyl	13.339	172	12956	0.325	ng	0.00
27) Fluoranthene-d10	19.493	212	21207	0.450	ng	0.00
31) Terphenyl-d14	20.079	244	13531	0.499	ng	0.00
<b>Target Compounds</b>						
34) Bis(2-ethylhexyl)phtha...	21.539	149	2284	0.135	ng	# 95

09/12/2022  
 Supervised By :Jagrut Upadhyay

(#) = qualifier out of range (m) = manual integration (+) = signals summed

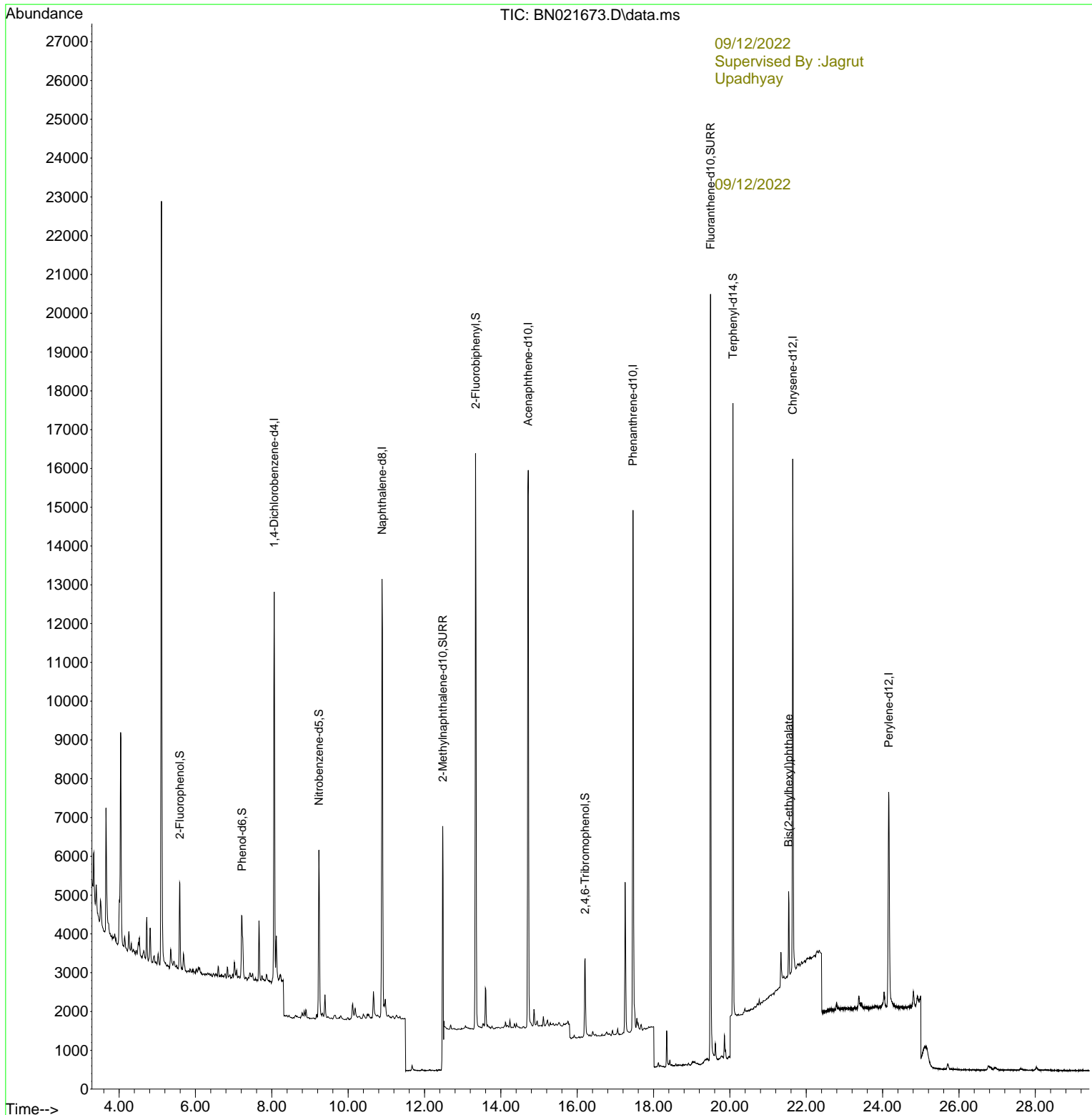
Data Path : Z:\svoasrv\HPCHEM1\BNA\_N\Data\BN091022\  
 Data File : BN021673.D  
 Acq On : 09 Sep 2022 22:42  
 Operator : CG/JU  
 Sample : N4492-11  
 Misc :  
 ALS Vial : 14 Sample Multiplier: 1

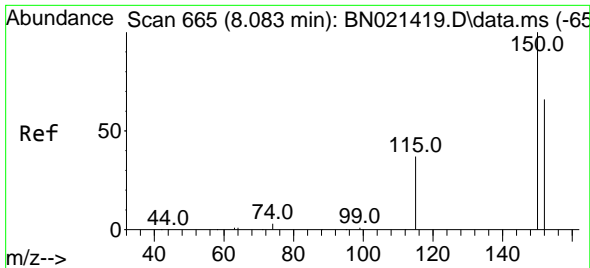
Instrument :  
 BNA\_N  
 ClientSampleId :  
 MW-02-4-14-090122

Quant Time: Sep 09 23:24:19 2022  
 Quant Method : Z:\SVOASRV\HPCHEM1\BNA\_N\METHODS\8270-SIM-BN082922.M  
 Quant Title : ASP BNA STANDARDS FOR 5 POINT CALIBRATION  
 QLast Update : Fri Sep 09 23:19:14 2022  
 Response via : Initial Calibration

Manual Integrations  
 APPROVED

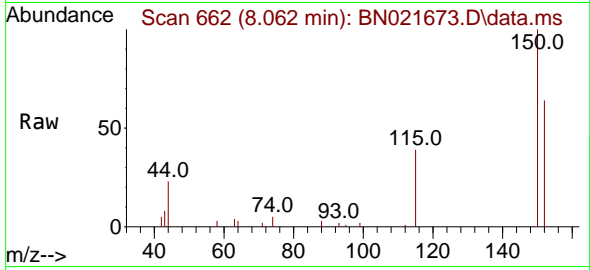
Reviewed By :Christian Giraldo 09/12/2022  
 Supervised By :Jagrut Upadhyay 09/12/2022





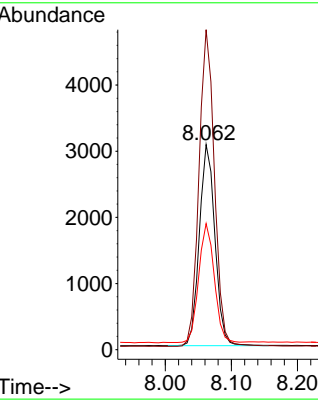
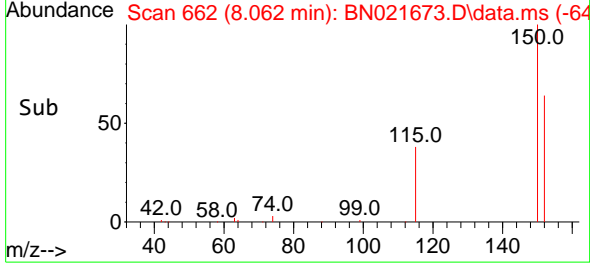
#1  
 1,4-Dichlorobenzene-d4  
 Concen: 0.400 ng  
 RT: 8.062 min Scan# 60  
 Delta R.T. -0.000 min  
 Lab File: BN021673.D  
 Acq: 09 Sep 2022 22:42

Instrument : BNA\_N  
 Client Sample Id : MW-02-4-14-090122



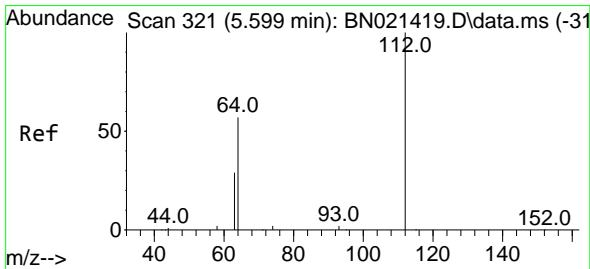
Tgt Ion: 152 Resp: 497  
 Ion Ratio Lower Upper  
 152 100  
 150 156.0 121.4 182.0  
 115 61.4 48.6 72.8

Manual Integrations  
**APPROVED**  
 Reviewed By : Christian Giraldo 09/12/2022  
 Supervised By : Jagrut Upadhyay 09/12/2022

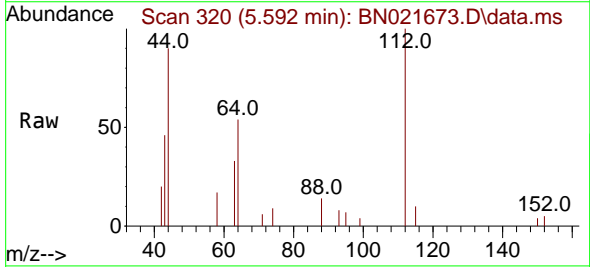


09/12/2022  
 Supervised By : Jagrut Upadhyay

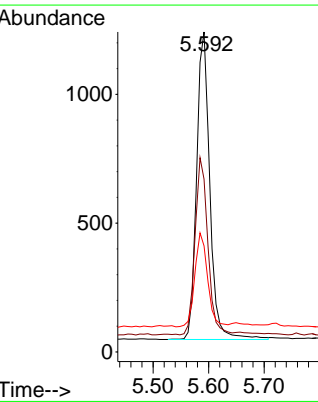
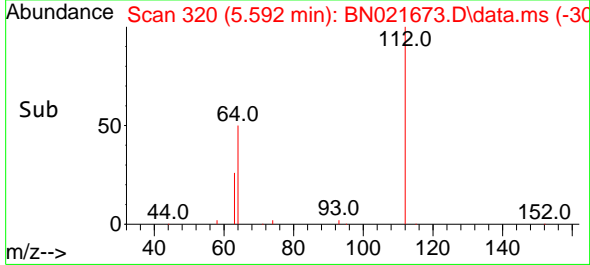
09/12/2022

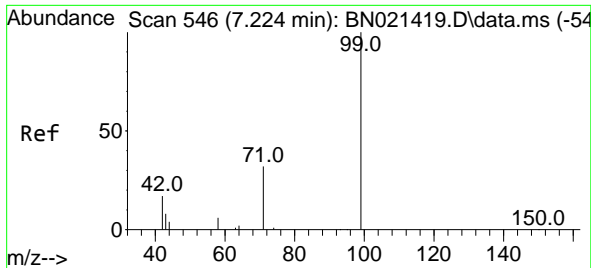


#4  
 2-Fluorophenol  
 Concen: 0.202 ng  
 RT: 5.592 min Scan# 320  
 Delta R.T. 0.000 min  
 Lab File: BN021673.D  
 Acq: 09 Sep 2022 22:42



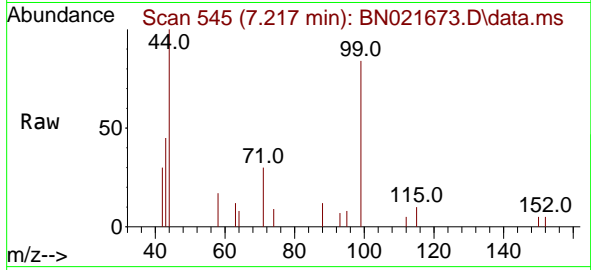
Tgt Ion: 112 Resp: 1970  
 Ion Ratio Lower Upper  
 112 100  
 64 56.0 43.5 65.3  
 63 29.5 22.6 34.0





#5  
Phenol-d6  
Concen: 0.131 ng  
RT: 7.217 min Scan# 54  
Delta R.T. 0.000 min  
Lab File: BN021673.D  
Acq: 09 Sep 2022 22:42

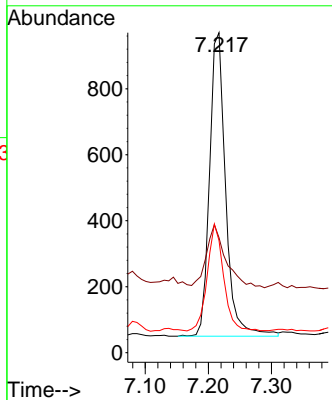
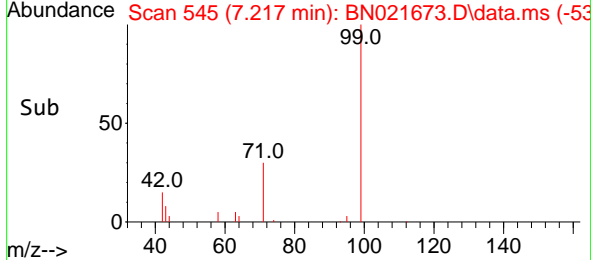
Instrument :  
BNA\_N  
ClientSampleId :  
MW-02-4-14-090122



Tgt Ion: 99 Resp: 1630  
Ion Ratio Lower Upper  
99 100  
42 25.2 15.5 23.3  
71 35.7 24.2 36.2

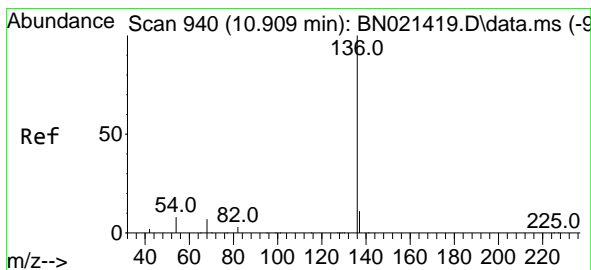
Manual Integrations  
APPROVED

Reviewed By :Christian Giraldo 09/12/2022  
Supervised By :Jagrut Upadhyay 09/12/2022

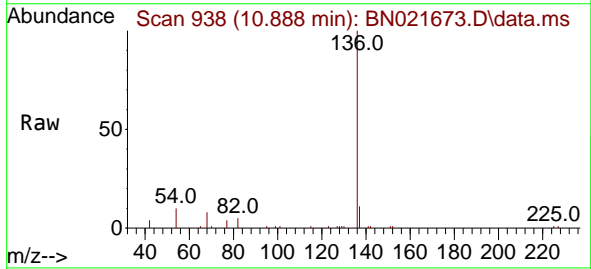


09/12/2022  
Supervised By :Jagrut  
Upadhyay

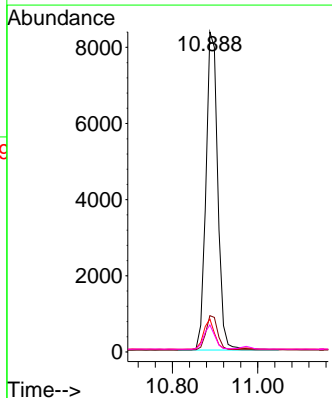
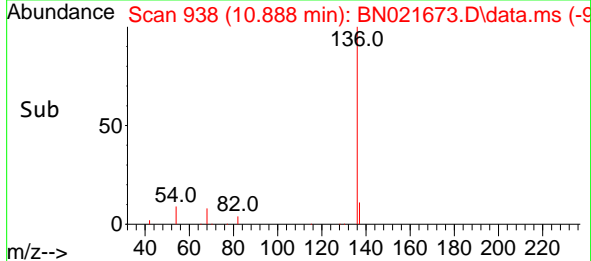
09/12/2022

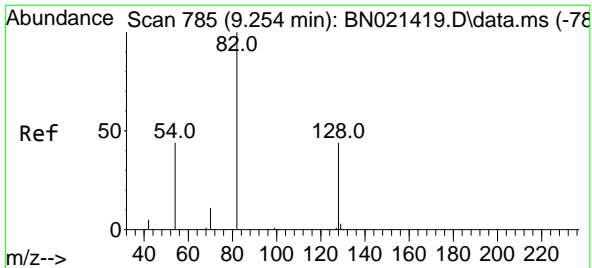


#7  
Naphthalene-d8  
Concen: 0.400 ng  
RT: 10.888 min Scan# 938  
Delta R.T. -0.011 min  
Lab File: BN021673.D  
Acq: 09 Sep 2022 22:42



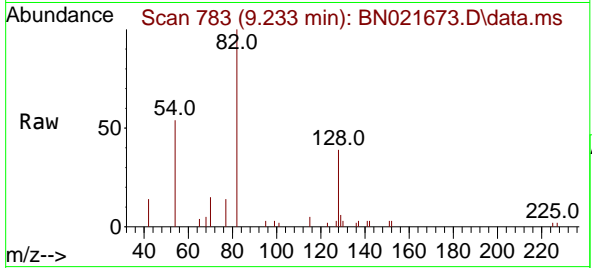
Tgt Ion:136 Resp: 16004  
Ion Ratio Lower Upper  
136 100  
137 11.4 9.3 13.9  
54 10.3 6.9 10.3  
68 8.5 6.1 9.1





#8  
 Nitrobenzene-d5  
 Concen: 0.360 ng m  
 RT: 9.233 min Scan# 71  
 Delta R.T. 0.000 min  
 Lab File: BN021673.D  
 Acq: 09 Sep 2022 22:42

Instrument :  
 BNA\_N  
 ClientSampleId :  
 MW-02-4-14-090122

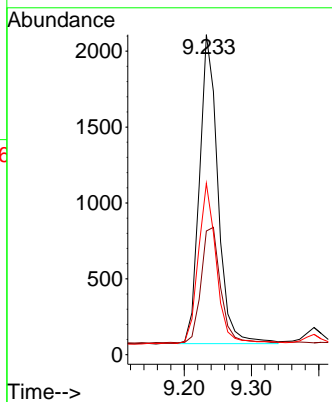
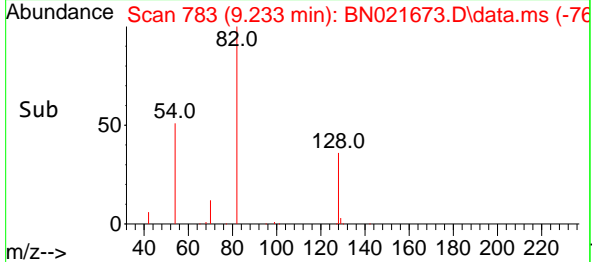


Tgt Ion: 82 Resp: 388

Ion	Ratio	Lower	Upper
82	100		
128	38.6	30.9	46.3
54	53.6	42.7	64.1

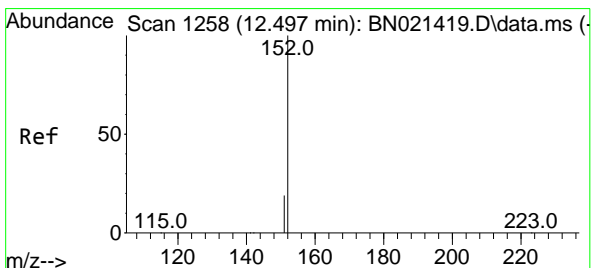
Manual Integrations  
 APPROVED

Reviewed By :Christian Giraldo 09/12/2022  
 Supervised By :Jagrut Upadhyay 09/12/2022



09/12/2022  
 Supervised By :Jagrut  
 Upadhyay

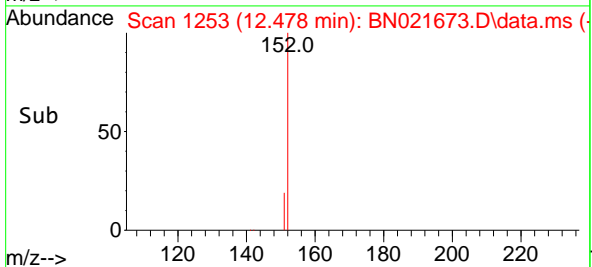
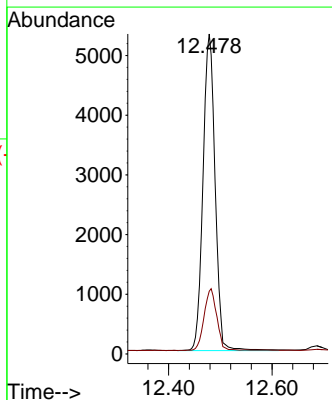
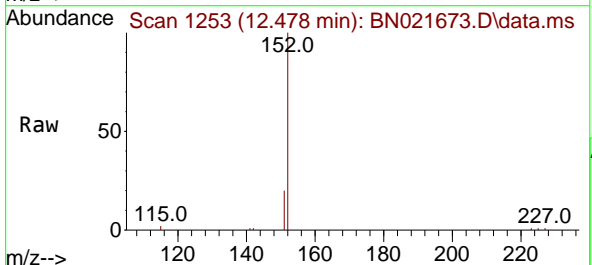
09/12/2022

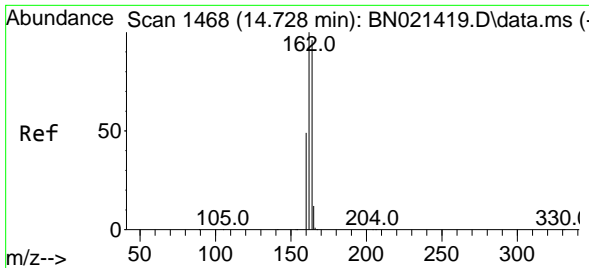


#11  
 2-Methylnaphthalene-d10  
 Concen: 0.365 ng  
 RT: 12.478 min Scan# 1253  
 Delta R.T. 0.000 min  
 Lab File: BN021673.D  
 Acq: 09 Sep 2022 22:42

Tgt Ion:152 Resp: 13158

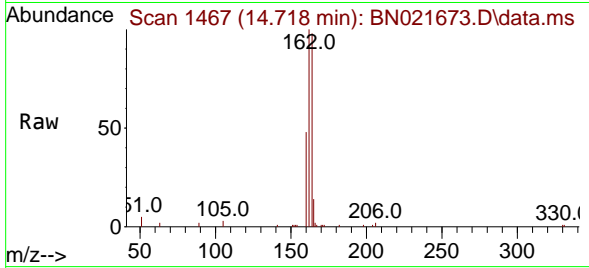
Ion	Ratio	Lower	Upper
152	100		
151	20.7	14.5	21.7





#13  
 Acenaphthene-d10  
 Concen: 0.400 ng  
 RT: 14.718 min Scan# 1467  
 Delta R.T. 0.000 min  
 Lab File: BN021673.D  
 Acq: 09 Sep 2022 22:42

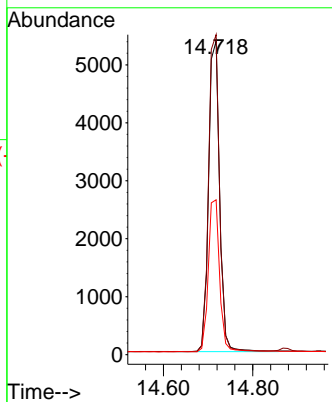
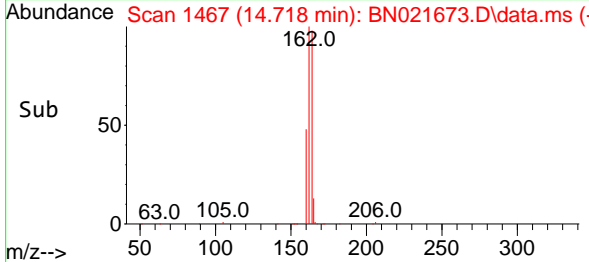
Instrument :  
 BNA\_N  
 ClientSampleId :  
 MW-02-4-14-090122



Tgt Ion:164 Resp: 912  
 Ion Ratio Lower Upper  
 164 100  
 162 102.0 82.2 123.4  
 160 49.4 39.5 59.3

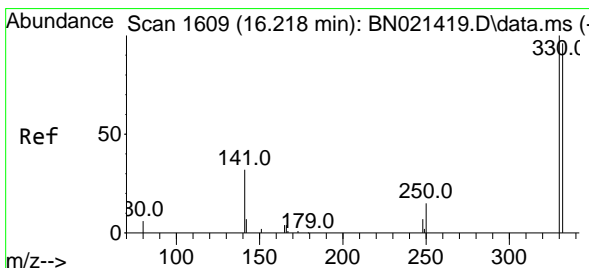
Manual Integrations  
 APPROVED

Reviewed By :Christian Giraldo 09/12/2022  
 Supervised By :Jagrut Upadhyay 09/12/2022

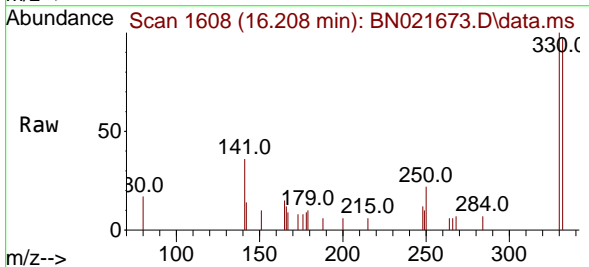


09/12/2022  
 Supervised By :Jagrut  
 Upadhyay

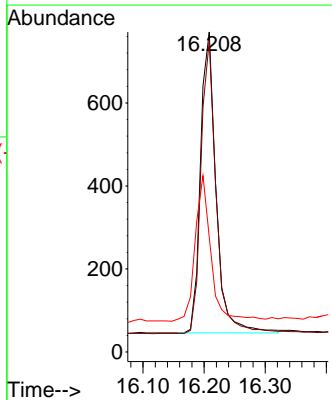
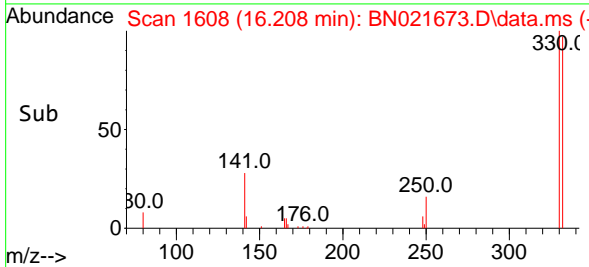
09/12/2022

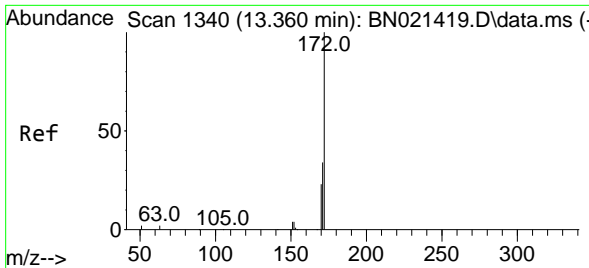


#14  
 2,4,6-Tribromophenol  
 Concen: 0.430 ng  
 RT: 16.208 min Scan# 1608  
 Delta R.T. 0.000 min  
 Lab File: BN021673.D  
 Acq: 09 Sep 2022 22:42



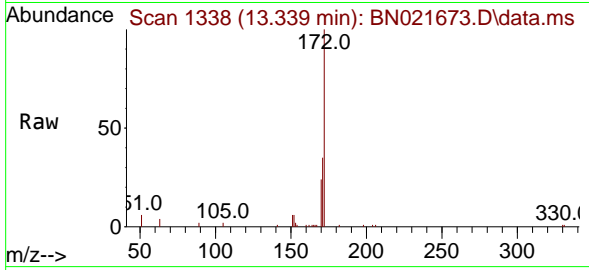
Tgt Ion:330 Resp: 1287  
 Ion Ratio Lower Upper  
 330 100  
 332 95.2 79.3 118.9  
 141 48.4 37.1 55.7





#15  
 2-Fluorobiphenyl  
 Concen: 0.325 ng  
 RT: 13.339 min Scan# 11  
 Delta R.T. 0.000 min  
 Lab File: BN021673.D  
 Acq: 09 Sep 2022 22:42

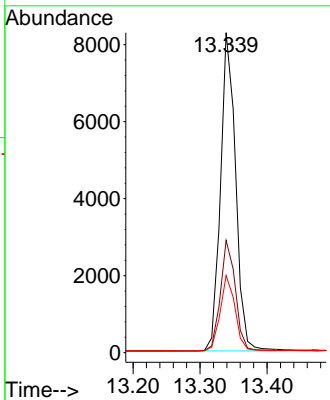
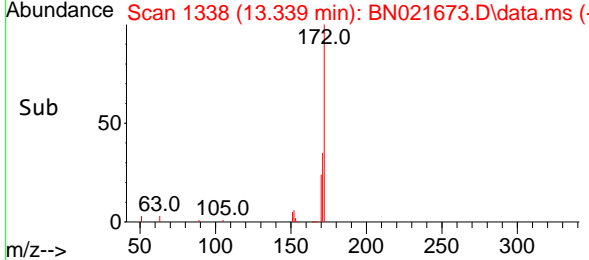
Instrument :  
 BNA\_N  
 ClientSampleId :  
 MW-02-4-14-090122



Tgt Ion:172 Resp: 12950  
 Ion Ratio Lower Upper  
 172 100  
 171 35.1 27.8 41.6  
 170 24.1 18.6 28.0

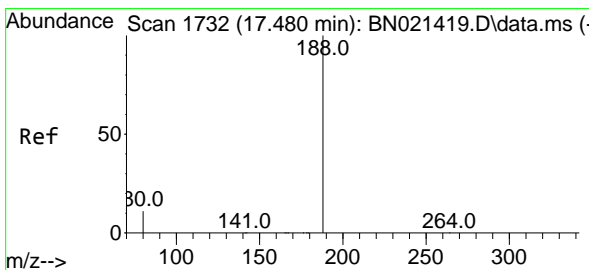
Manual Integrations  
 APPROVED

Reviewed By :Christian Giraldo 09/12/2022  
 Supervised By :Jagrut Upadhyay 09/12/2022

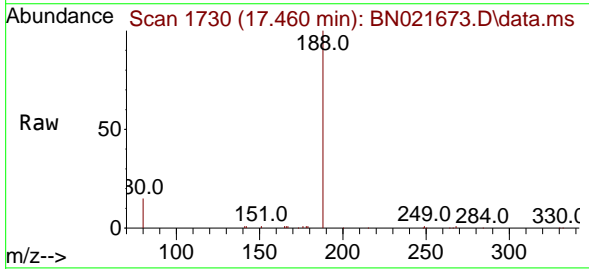


09/12/2022  
 Supervised By :Jagrut  
 Upadhyay

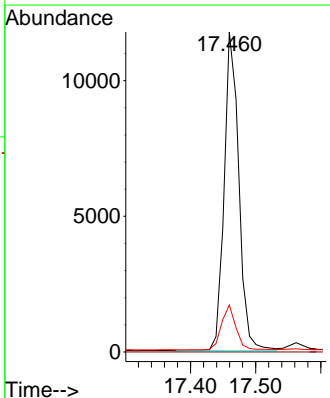
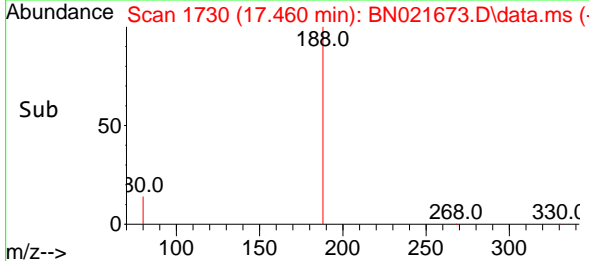
09/12/2022

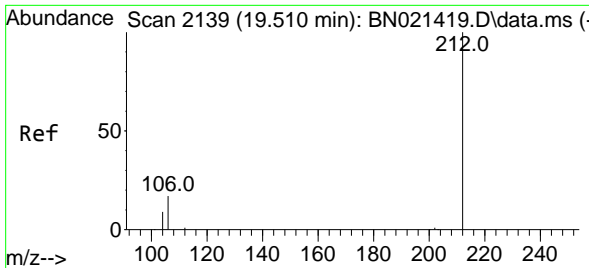


#19  
 Phenanthrene-d10  
 Concen: 0.400 ng  
 RT: 17.460 min Scan# 1730  
 Delta R.T. -0.010 min  
 Lab File: BN021673.D  
 Acq: 09 Sep 2022 22:42



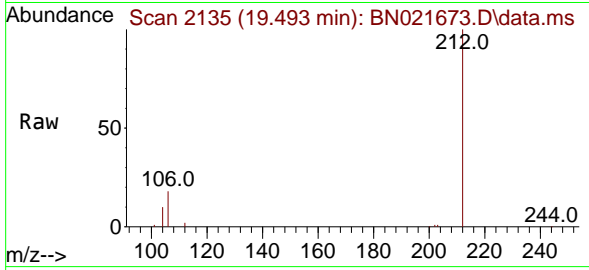
Tgt Ion:188 Resp: 18310  
 Ion Ratio Lower Upper  
 188 100  
 94 0.0 0.0 0.0  
 80 14.7 9.5 14.3#





#27  
 Fluoranthene-d10  
 Concen: 0.450 ng  
 RT: 19.493 min Scan# 2135  
 Delta R.T. -0.004 min  
 Lab File: BN021673.D  
 Acq: 09 Sep 2022 22:42

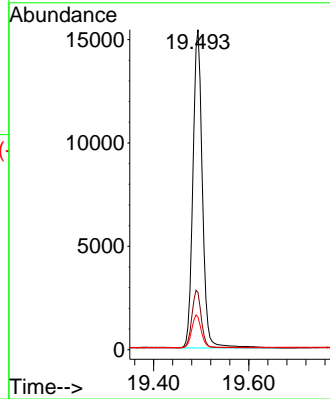
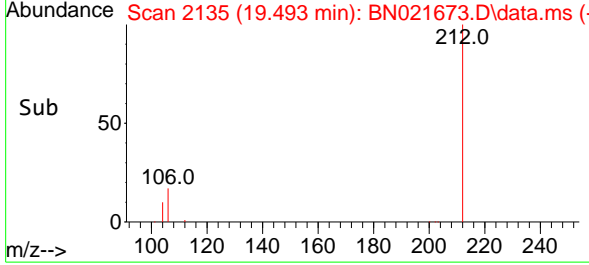
Instrument :  
 BNA\_N  
 ClientSampleId :  
 MW-02-4-14-090122



Tgt Ion:212 Resp: 2120  
 Ion Ratio Lower Upper  
 212 100  
 106 18.0 14.2 21.2  
 104 10.2 7.8 11.6

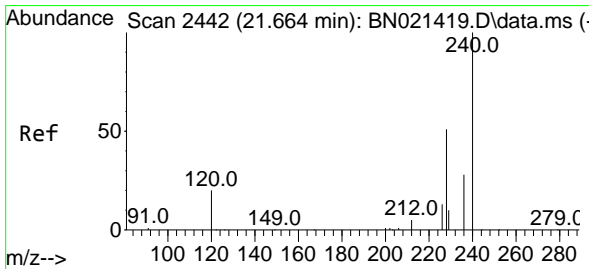
Manual Integrations  
 APPROVED

Reviewed By :Christian Giraldo 09/12/2022  
 Supervised By :Jagrut Upadhyay 09/12/2022

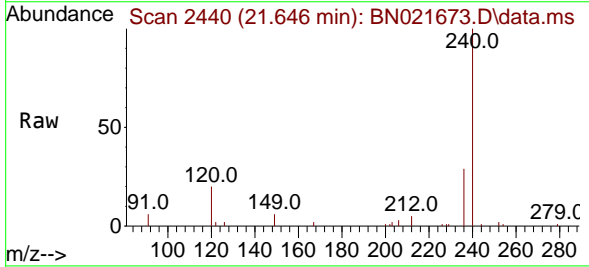


09/12/2022  
 Supervised By :Jagrut  
 Upadhyay

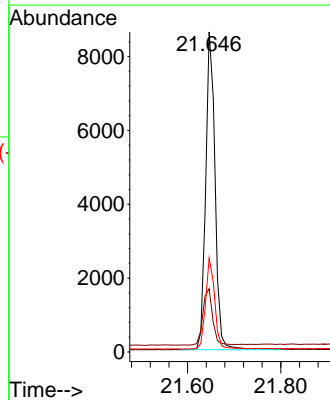
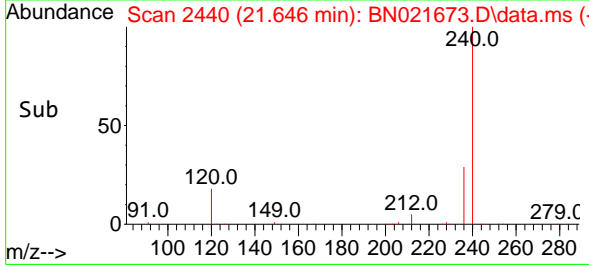
09/12/2022



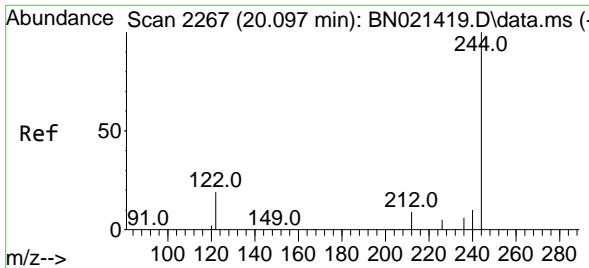
#29  
 Chrysene-d12  
 Concen: 0.400 ng  
 RT: 21.646 min Scan# 2440  
 Delta R.T. -0.009 min  
 Lab File: BN021673.D  
 Acq: 09 Sep 2022 22:42



Tgt Ion:240 Resp: 12065  
 Ion Ratio Lower Upper  
 240 100  
 120 19.7 10.2 15.4#  
 236 29.3 22.1 33.1

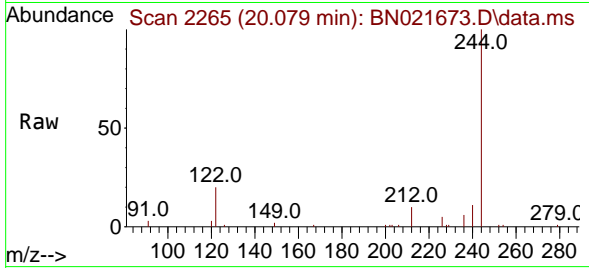






#31  
 Terphenyl-d14  
 Concen: 0.499 ng  
 RT: 20.079 min Scan# 21  
 Delta R.T. -0.009 min  
 Lab File: BN021673.D  
 Acq: 09 Sep 2022 22:42

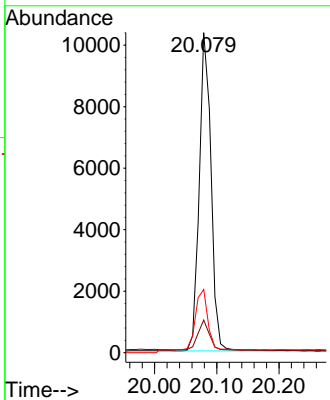
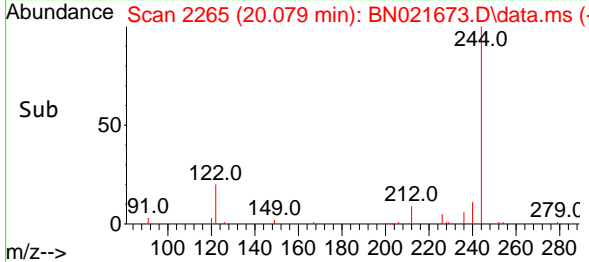
Instrument :  
 BNA\_N  
 ClientSampleId :  
 MW-02-4-14-090122



Tgt Ion:244 Resp: 1353  
 Ion Ratio Lower Upper  
 244 100  
 212 10.2 6.5 9.7  
 122 19.8 9.1 13.7

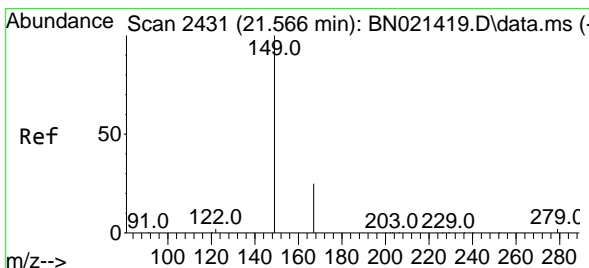
Manual Integrations  
 APPROVED

Reviewed By :Christian Giraldo 09/12/2022  
 Supervised By :Jagrut Upadhyay 09/12/2022

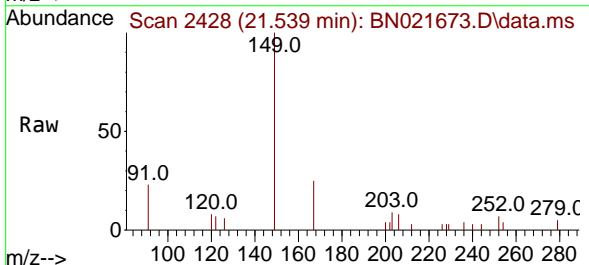


09/12/2022  
 Supervised By :Jagrut  
 Upadhyay

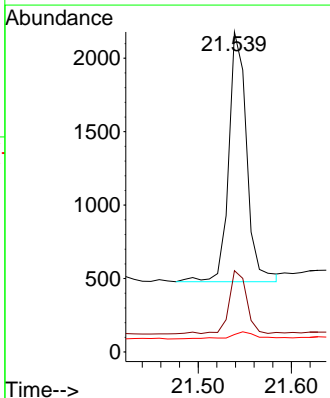
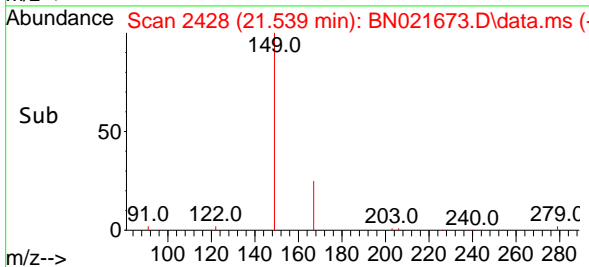
09/12/2022

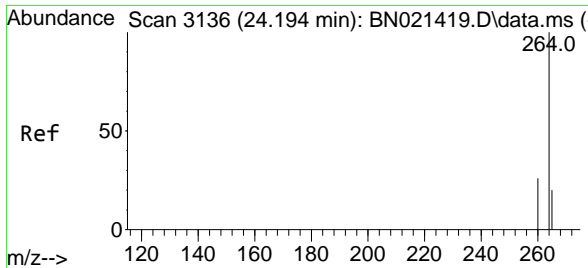


#34  
 Bis(2-ethylhexyl)phthalate  
 Concen: 0.135 ng  
 RT: 21.539 min Scan# 2428  
 Delta R.T. -0.009 min  
 Lab File: BN021673.D  
 Acq: 09 Sep 2022 22:42



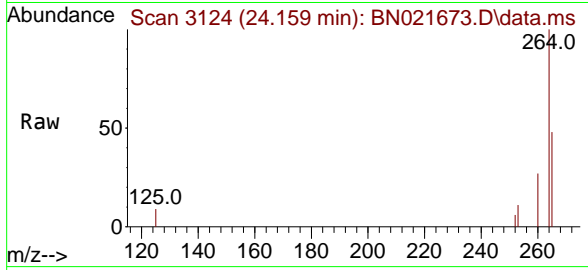
Tgt Ion:149 Resp: 2284  
 Ion Ratio Lower Upper  
 149 100  
 167 24.3 21.4 32.0  
 279 4.2 2.2 3.2





#35  
 Perylene-d12  
 Concen: 0.400 ng  
 RT: 24.159 min Scan# 31  
 Delta R.T. -0.014 min  
 Lab File: BN021673.D  
 Acq: 09 Sep 2022 22:42

Instrument :  
 BNA\_N  
 ClientSampleId :  
 MW-02-4-14-090122

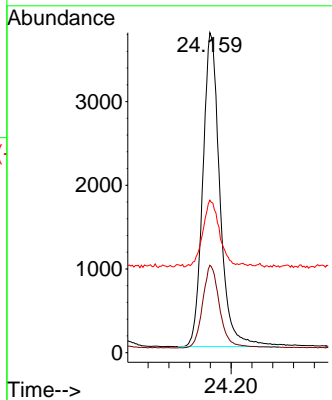
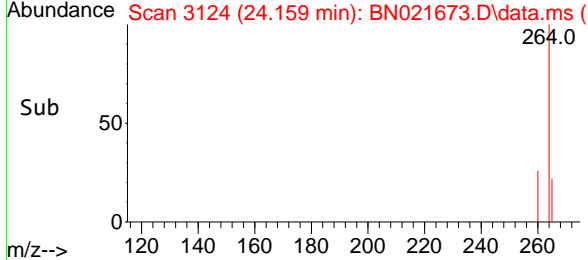


Tgt Ion: 264 Resp: 8584

Ion	Ratio	Lower	Upper
264	100		
260	27.3	21.0	31.6
265	47.7	32.2	48.2

Manual Integrations  
 APPROVED

Reviewed By : Christian Giraldo 09/12/2022  
 Supervised By : Jagrut Upadhyay 09/12/2022



09/12/2022  
 Supervised By : Jagrut  
 Upadhyay

09/12/2022