

Data Path : Z:\svoasrv\HPCHEM1\BNA\_N\Data\BN091022\  
 Data File : BN021707.D  
 Acq On : 10 Sep 2022 20:46  
 Operator : CG/JU  
 Sample : N4557-03  
 Misc :  
 ALS Vial : 46 Sample Multiplier: 1

**Instrument :**  
 BNA\_N  
**ClientSampleId :**  
 SP-303-20220908

**Manual Integrations**  
**APPROVED**  
 Reviewed By :Christian Giraldo 09/12/2022  
 Supervised By :Jagrut Upadhyay 09/12/2022

Quant Time: Sep 12 01:13:40 2022  
 Quant Method : Z:\SVOASRV\HPCHEM1\BNA\_N\METHODS\8270-SIM-BN082922.M  
 Quant Title : ASP BNA STANDARDS FOR 5 POINT CALIBRATION  
 QLast Update : Fri Sep 09 23:19:14 2022  
 Response via : Initial Calibration

Compound	R.T.	QIon	Response	Conc	Units	Dev(Min)
<b>Internal Standards</b>						
1) 1,4-Dichlorobenzene-d4	8.062	152	5686	0.400	ng	0.00
7) Naphthalene-d8	10.888	136	18959	0.400	ng	-0.01
13) Acenaphthene-d10	14.707	164	11000	0.400	ng	-0.01
19) Phenanthrene-d10	17.460	188	21286	0.400	ng	-0.01
29) Chrysene-d12	21.655	240	12434	0.400	ng	0.00
35) Perylene-d12	24.162	264	9908	0.400	ng	#-0.01
<b>System Monitoring Compounds</b>						
4) 2-Fluorophenol	5.592	112	1881	0.169	ng	0.00
5) Phenol-d6	7.217	99	1426	0.101	ng	0.00
8) Nitrobenzene-d5	9.233	82	4673m	0.365	ng	0.00
11) 2-Methylnaphthalene-d10	12.475	152	14931	0.349	ng	0.00
14) 2,4,6-Tribromophenol	16.208	330	1213	0.336	ng	0.00
15) 2-Fluorobiphenyl	13.339	172	14737	0.306	ng	0.00
27) Fluoranthene-d10	19.493	212	19649	0.359	ng	0.00
31) Terphenyl-d14	20.079	244	12337	0.441	ng	0.00
<b>Target Compounds</b>						
34) Bis(2-ethylhexyl)phtha...	21.548	149	2688	0.154	ng	# 94

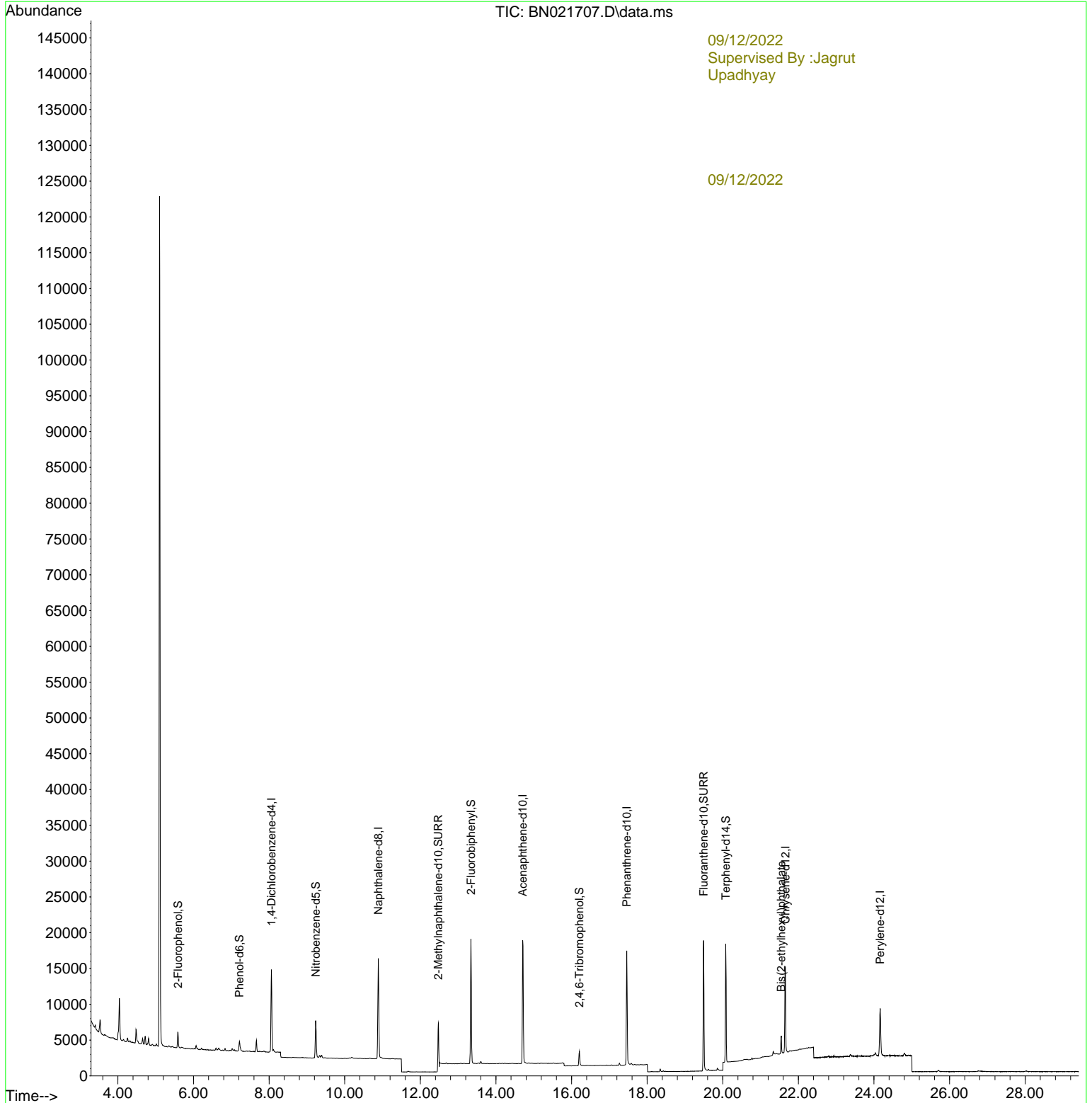
(#) = qualifier out of range (m) = manual integration (+) = signals summed

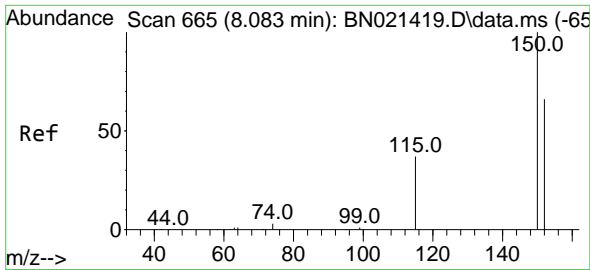
Data Path : Z:\svoasrv\HPCHEM1\BNA\_N\Data\BN091022\  
 Data File : BN021707.D  
 Acq On : 10 Sep 2022 20:46  
 Operator : CG/JU  
 Sample : N4557-03  
 Misc :  
 ALS Vial : 46 Sample Multiplier: 1

**Instrument :**  
 BNA\_N  
**ClientSampleId :**  
 SP-303-20220908

Quant Time: Sep 12 01:13:40 2022  
 Quant Method : Z:\SVOASRV\HPCHEM1\BNA\_N\METHODS\8270-SIM-BN082922.M  
 Quant Title : ASP BNA STANDARDS FOR 5 POINT CALIBRATION  
 QLast Update : Fri Sep 09 23:19:14 2022  
 Response via : Initial Calibration

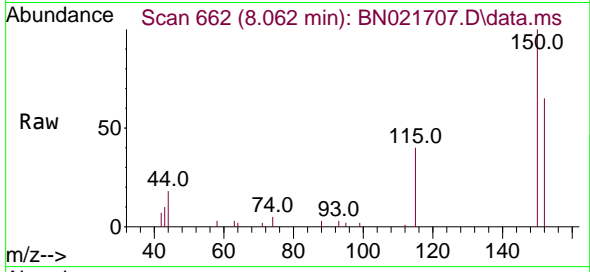
**Manual Integrations**  
**APPROVED**  
 Reviewed By :Christian Giraldo 09/12/2022  
 Supervised By :Jagrut Upadhyay 09/12/2022





#1  
 1,4-Dichlorobenzene-d4  
 Concen: 0.400 ng  
 RT: 8.062 min Scan# 60  
 Delta R.T. -0.000 min  
 Lab File: BN021707.D  
 Acq: 10 Sep 2022 20:46

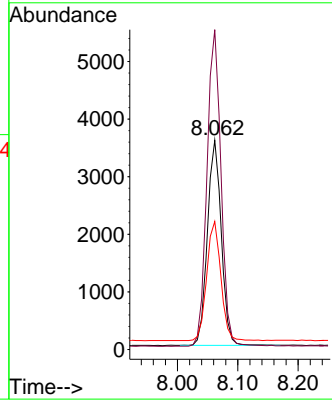
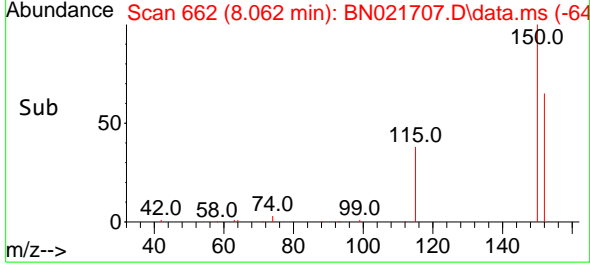
Instrument :  
 BNA\_N  
 Client Sample Id :  
 SP-303-20220908



Tgt Ion: 152 Resp: 5686  
 Ion Ratio Lower Upper  
 152 100  
 150 152.9 121.4 182.0  
 115 61.2 48.6 72.8

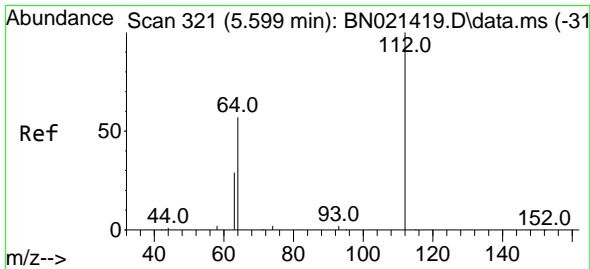
Manual Integrations  
 APPROVED

Reviewed By : Christian Giraldo 09/12/2022  
 Supervised By : Jagrut Upadhyay 09/12/2022

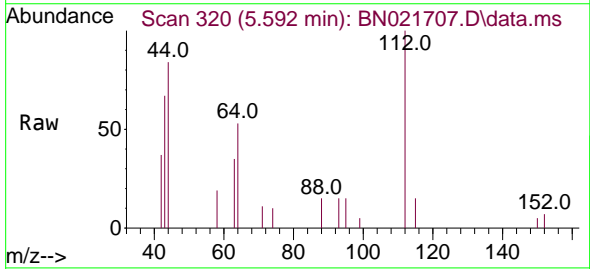


09/12/2022  
 Supervised By : Jagrut  
 Upadhyay

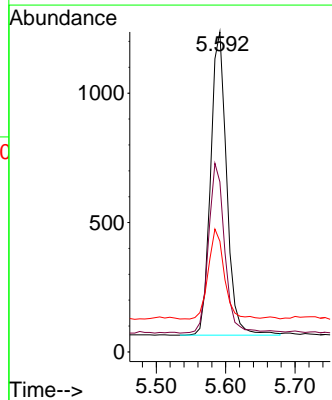
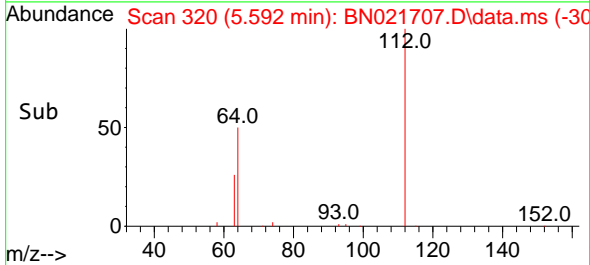
09/12/2022

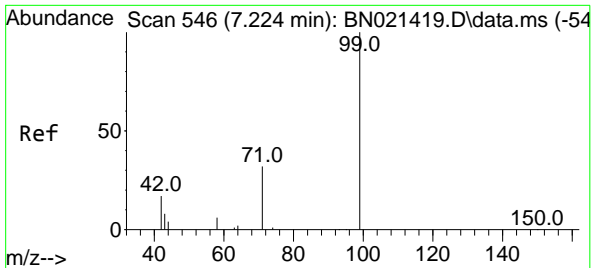


#4  
 2-Fluorophenol  
 Concen: 0.169 ng  
 RT: 5.592 min Scan# 320  
 Delta R.T. 0.000 min  
 Lab File: BN021707.D  
 Acq: 10 Sep 2022 20:46



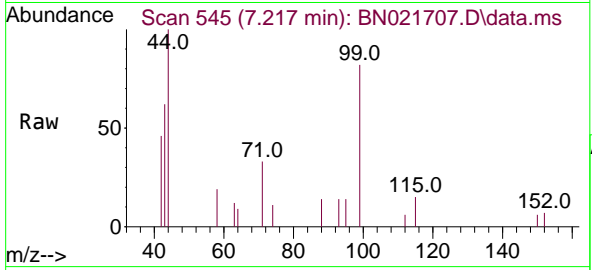
Tgt Ion: 112 Resp: 1881  
 Ion Ratio Lower Upper  
 112 100  
 64 56.9 43.5 65.3  
 63 29.5 22.6 34.0





#5  
 Phenol-d6  
 Concen: 0.101 ng  
 RT: 7.217 min Scan# 54  
 Delta R.T. 0.000 min  
 Lab File: BN021707.D  
 Acq: 10 Sep 2022 20:46

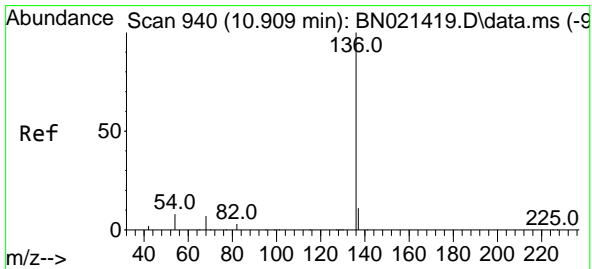
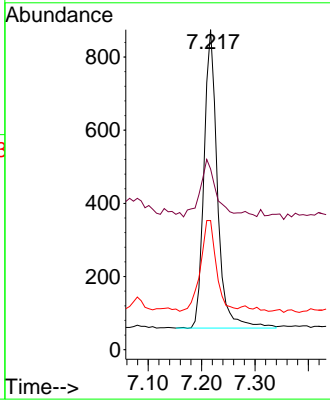
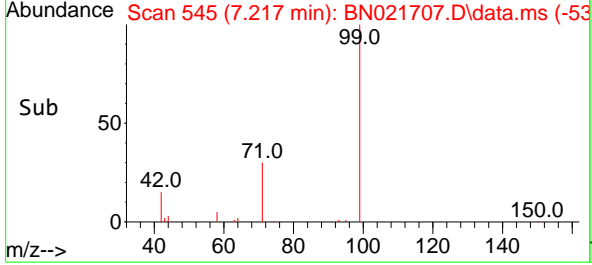
Instrument :  
 BNA\_N  
 ClientSampleId :  
 SP-303-20220908



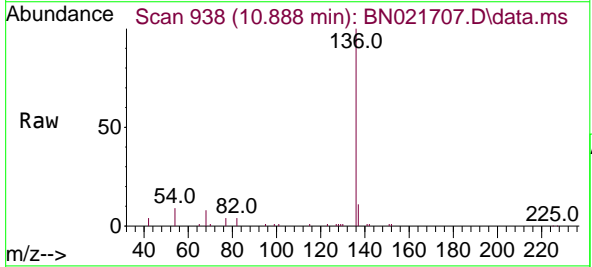
Tgt Ion: 99 Resp: 1426

Ion	Ratio	Lower	Upper
99	100		
42	22.3	15.5	23.3
71	35.6	24.2	36.2

Manual Integrations  
**APPROVED**  
 Reviewed By :Christian Giraldo 09/12/2022  
 Supervised By :Jagrut Upadhyay 09/12/2022

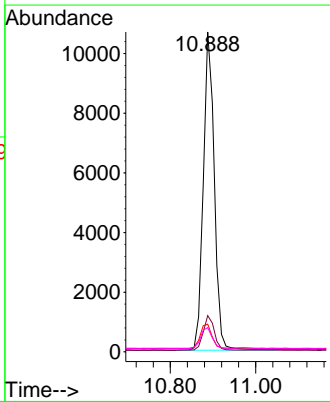
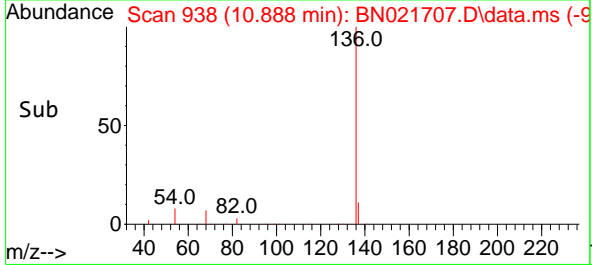


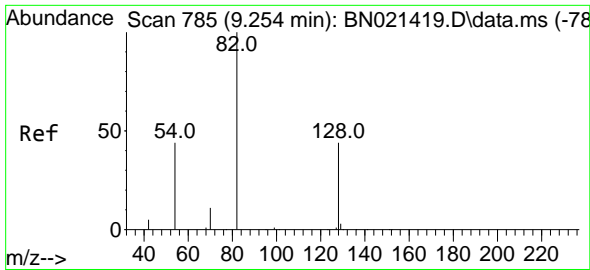
#7  
 Naphthalene-d8  
 Concen: 0.400 ng  
 RT: 10.888 min Scan# 938  
 Delta R.T. -0.011 min  
 Lab File: BN021707.D  
 Acq: 10 Sep 2022 20:46



Tgt Ion: 136 Resp: 18959

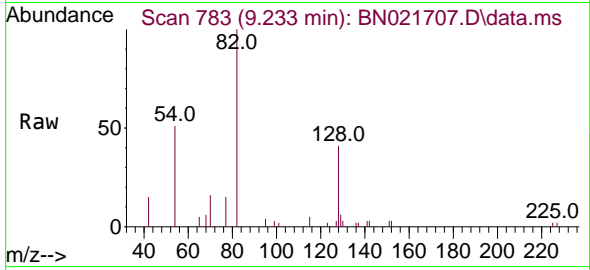
Ion	Ratio	Lower	Upper
136	100		
137	11.3	9.3	13.9
54	8.7	6.9	10.3
68	7.6	6.1	9.1





#8  
 Nitrobenzene-d5  
 Concen: 0.365 ng m  
 RT: 9.233 min Scan# 785  
 Delta R.T. 0.000 min  
 Lab File: BN021707.D  
 Acq: 10 Sep 2022 20:46

Instrument :  
 BNA\_N  
 ClientSampleId :  
 SP-303-20220908

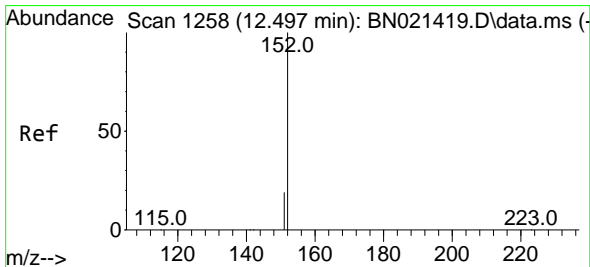
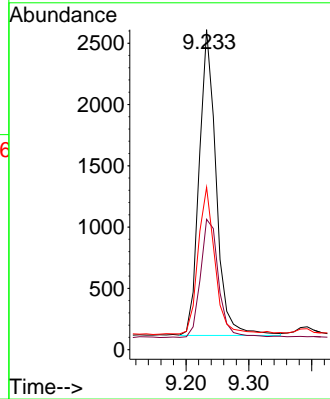
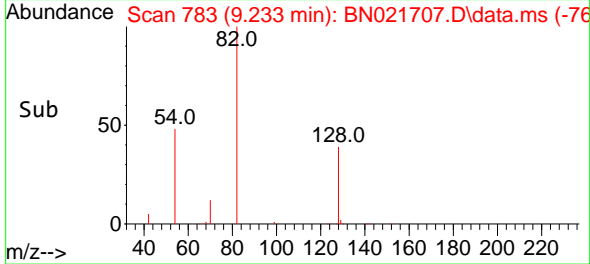


Tgt Ion: 82 Resp: 4673  
 Ion Ratio Lower Upper  
 82 100  
 128 40.8 30.9 46.3  
 54 50.7 42.7 64.1

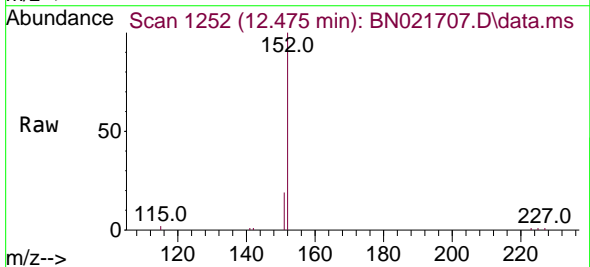
Manual Integrations  
 APPROVED

Reviewed By :Christian Giraldo 09/12/2022  
 Supervised By :Jagrut Upadhyay 09/12/2022

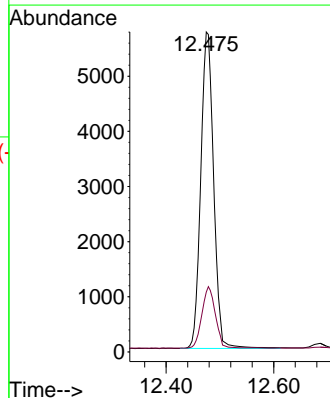
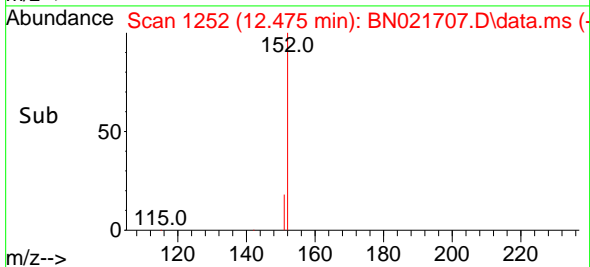
Supervised By :Jagrut  
 Upadhyay  
 09/12/2022

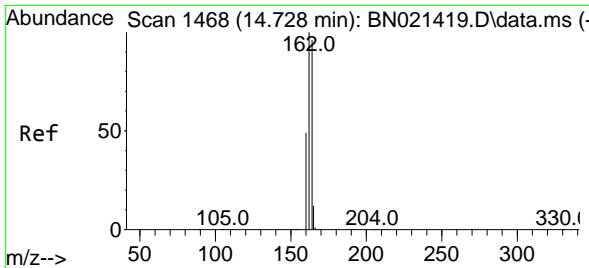


#11  
 2-Methylnaphthalene-d10  
 Concen: 0.349 ng  
 RT: 12.475 min Scan# 1252  
 Delta R.T. -0.004 min  
 Lab File: BN021707.D  
 Acq: 10 Sep 2022 20:46



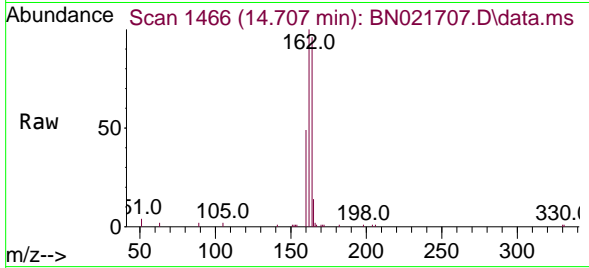
Tgt Ion:152 Resp: 14931  
 Ion Ratio Lower Upper  
 152 100  
 151 19.8 14.5 21.7





#13  
 Acenaphthene-d10  
 Concen: 0.400 ng  
 RT: 14.707 min Scan# 1466  
 Delta R.T. -0.011 min  
 Lab File: BN021707.D  
 Acq: 10 Sep 2022 20:46

Instrument :  
 BNA\_N  
 Client Sample Id :  
 SP-303-20220908

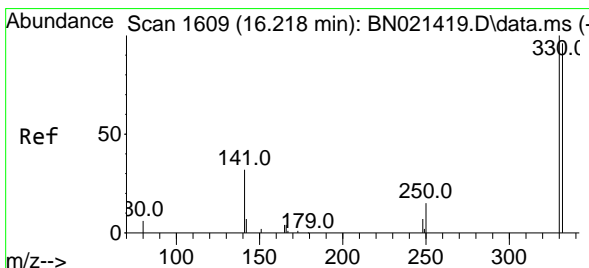
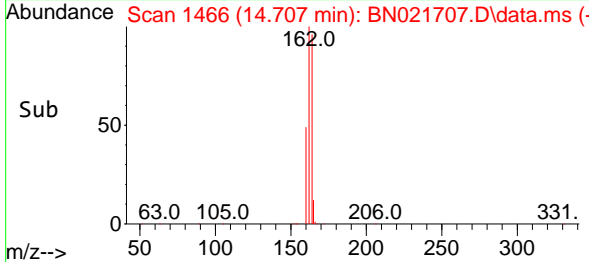
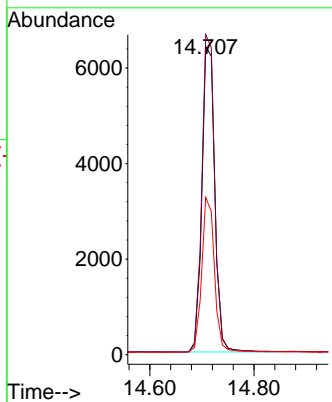


Tgt Ion:164 Resp: 11000  
 Ion Ratio Lower Upper  
 164 100  
 162 103.9 82.2 123.4  
 160 51.0 39.5 59.3

Manual Integrations  
**APPROVED**

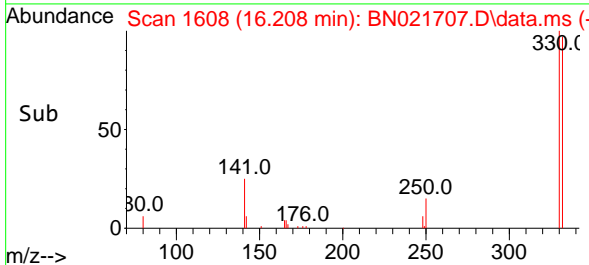
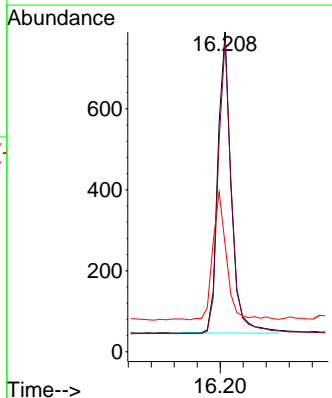
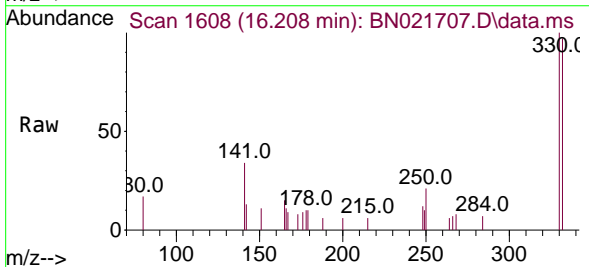
Reviewed By :Christian Giraldo 09/12/2022  
 Supervised By :Jagrut Upadhyay 09/12/2022

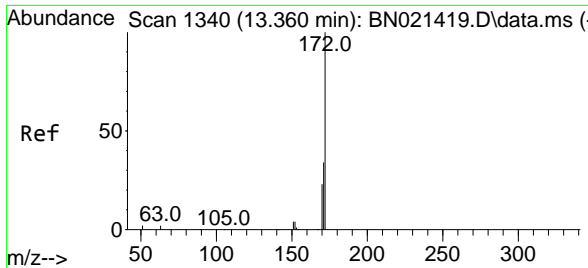
Supervised By :Jagrut  
 Upadhyay  
 09/12/2022



#14  
 2,4,6-Tribromophenol  
 Concen: 0.336 ng  
 RT: 16.208 min Scan# 1608  
 Delta R.T. 0.000 min  
 Lab File: BN021707.D  
 Acq: 10 Sep 2022 20:46

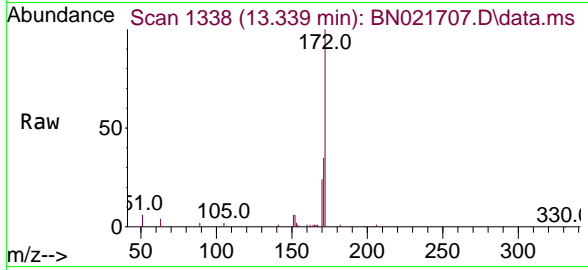
Tgt Ion:330 Resp: 1213  
 Ion Ratio Lower Upper  
 330 100  
 332 96.2 79.3 118.9  
 141 43.1 37.1 55.7





#15  
 2-Fluorobiphenyl  
 Concen: 0.306 ng  
 RT: 13.339 min Scan# 1338  
 Delta R.T. 0.000 min  
 Lab File: BN021707.D  
 Acq: 10 Sep 2022 20:46

Instrument : BNA\_N  
 Client Sample Id : SP-303-20220908

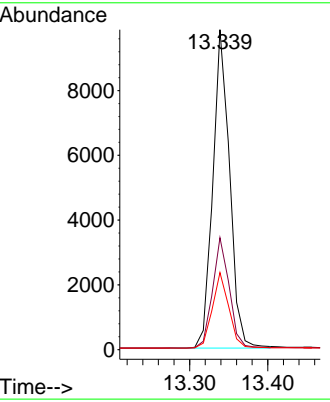
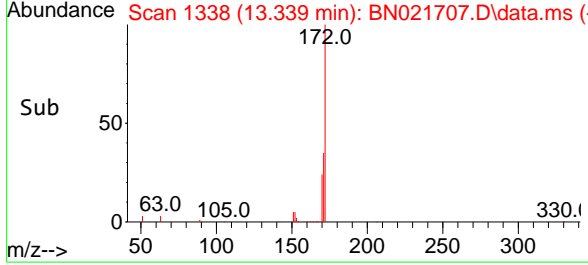


Tgt Ion: 172 Resp: 1473

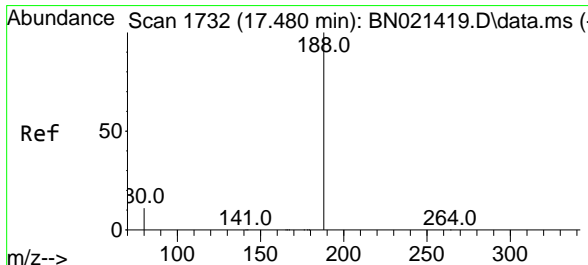
Ion	Ratio	Lower	Upper
172	100		
171	35.0	27.8	41.6
170	24.1	18.6	28.0

Manual Integrations  
**APPROVED**

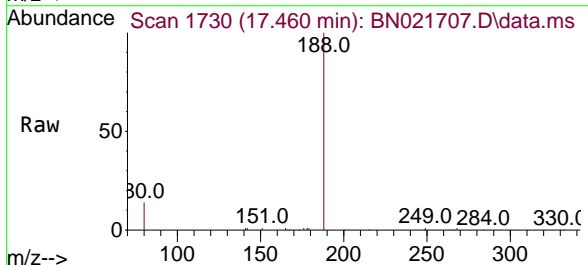
Reviewed By : Christian Giraldo 09/12/2022  
 Supervised By : Jagrut Upadhyay 09/12/2022



Supervised By : Jagrut Upadhyay  
 09/12/2022

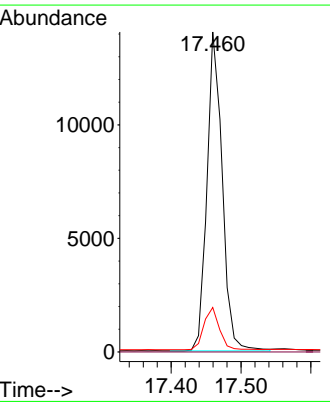
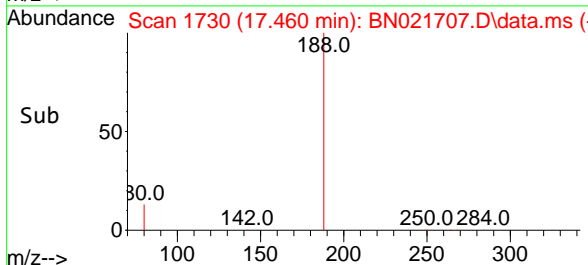


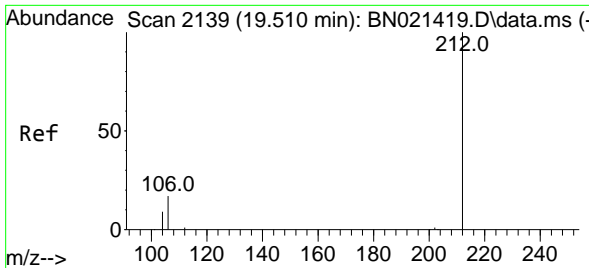
#19  
 Phenanthrene-d10  
 Concen: 0.400 ng  
 RT: 17.460 min Scan# 1730  
 Delta R.T. -0.010 min  
 Lab File: BN021707.D  
 Acq: 10 Sep 2022 20:46



Tgt Ion: 188 Resp: 21286

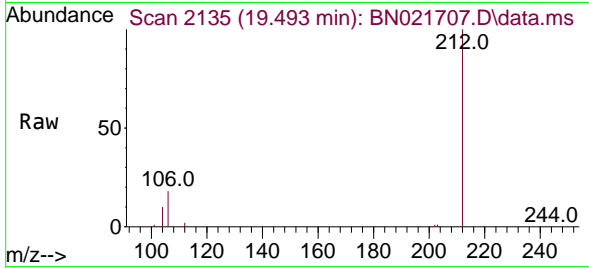
Ion	Ratio	Lower	Upper
188	100		
94	0.0	0.0	0.0
80	13.9	9.5	14.3





#27  
 Fluoranthene-d10  
 Concen: 0.359 ng  
 RT: 19.493 min Scan# 2135  
 Delta R.T. -0.004 min  
 Lab File: BN021707.D  
 Acq: 10 Sep 2022 20:46

**Instrument :**  
 BNA\_N  
**Client Sample Id :**  
 SP-303-20220908



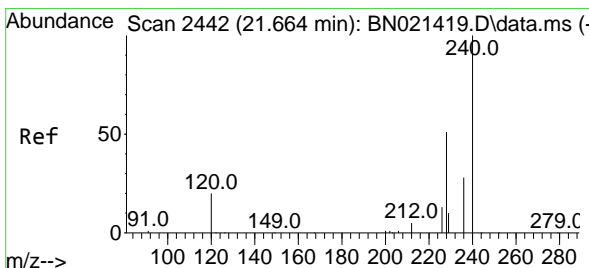
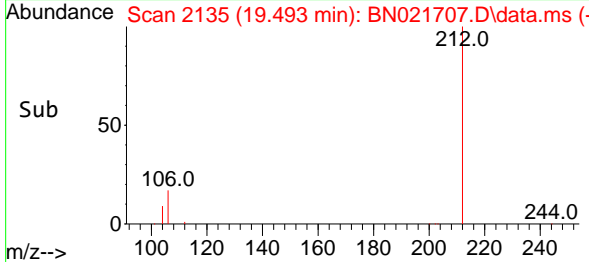
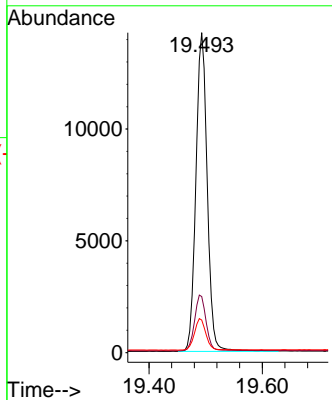
Tgt Ion: 212 Resp: 19649

Ion	Ratio	Lower	Upper
212	100		
106	17.9	14.2	21.2
104	10.0	7.8	11.6

**Manual Integrations**  
**APPROVED**

Reviewed By : Christian Giraldo 09/12/2022  
 Supervised By : Jagrut Upadhyay 09/12/2022

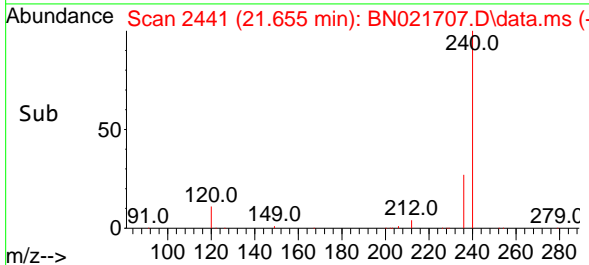
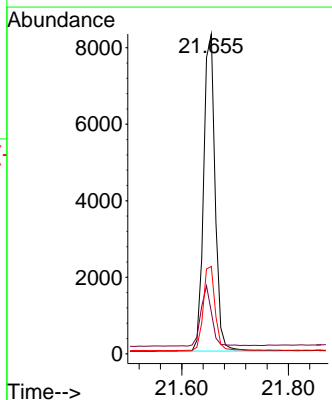
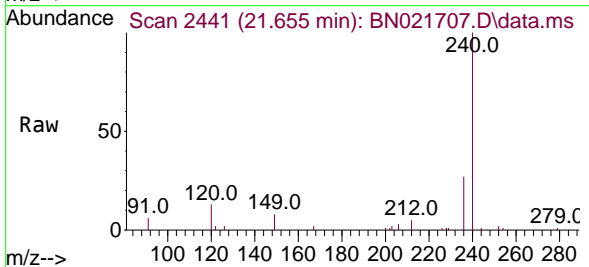
Supervised By : Jagrut  
 Upadhyay  
 09/12/2022



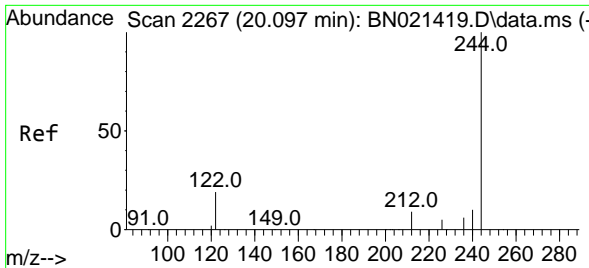
#29  
 Chrysene-d12  
 Concen: 0.400 ng  
 RT: 21.655 min Scan# 2441  
 Delta R.T. 0.000 min  
 Lab File: BN021707.D  
 Acq: 10 Sep 2022 20:46

Tgt Ion: 240 Resp: 12434

Ion	Ratio	Lower	Upper
240	100		
120	13.1	10.2	15.4
236	27.3	22.1	33.1

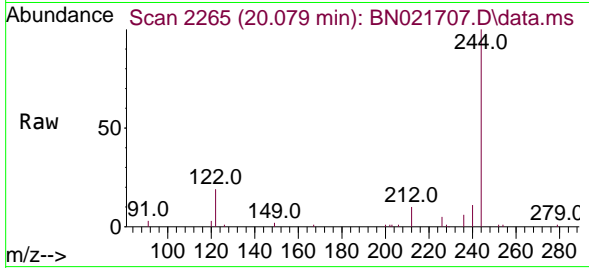






#31  
 Terphenyl-d14  
 Concen: 0.441 ng  
 RT: 20.079 min Scan# 21  
 Delta R.T. -0.009 min  
 Lab File: BN021707.D  
 Acq: 10 Sep 2022 20:46

Instrument :  
 BNA\_N  
 Client Sample Id :  
 SP-303-20220908

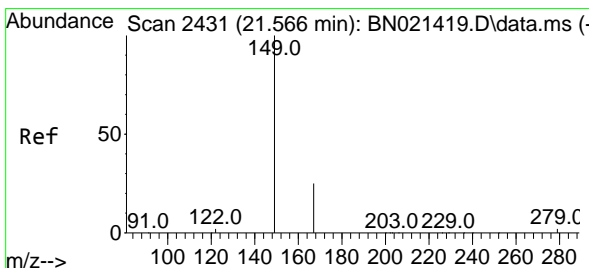
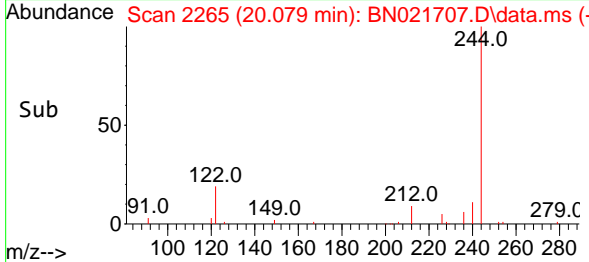
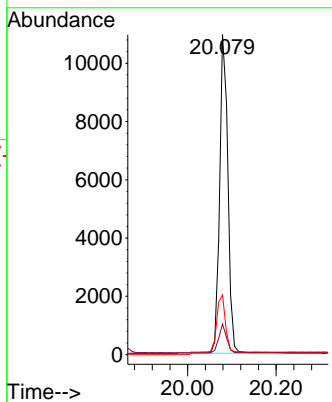


Tgt Ion: 244 Resp: 1233  
 Ion Ratio Lower Upper  
 244 100  
 212 9.6 6.5 9.7  
 122 18.7 9.1 13.7

Manual Integrations  
 APPROVED

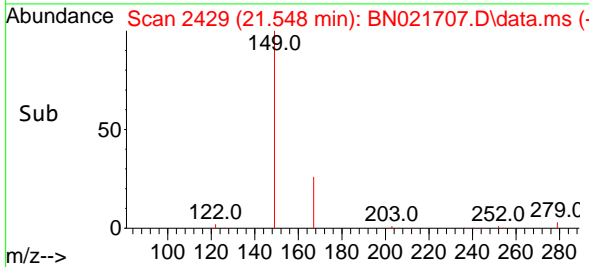
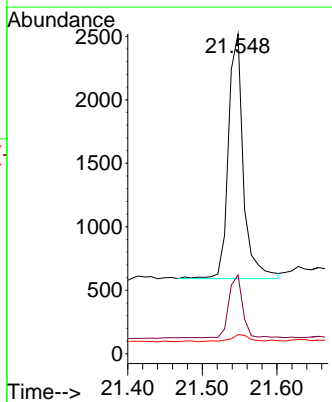
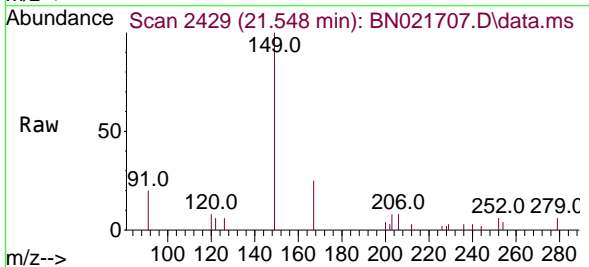
Reviewed By : Christian Giraldo 09/12/2022  
 Supervised By : Jagrut Upadhyay 09/12/2022

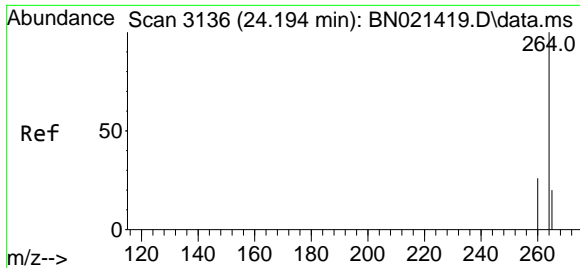
Supervised By : Jagrut  
 Upadhyay  
 09/12/2022



#34  
 Bis(2-ethylhexyl)phthalate  
 Concen: 0.154 ng  
 RT: 21.548 min Scan# 2429  
 Delta R.T. 0.000 min  
 Lab File: BN021707.D  
 Acq: 10 Sep 2022 20:46

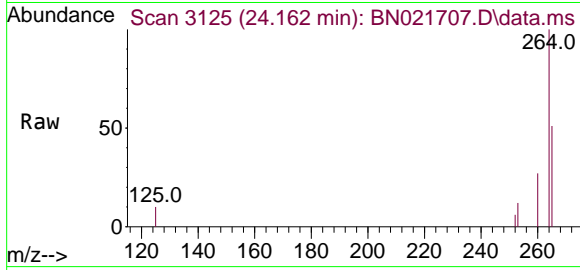
Tgt Ion: 149 Resp: 2688  
 Ion Ratio Lower Upper  
 149 100  
 167 23.7 21.4 32.0  
 279 3.9 2.2 3.2





#35  
 Perylene-d12  
 Concen: 0.400 ng  
 RT: 24.162 min Scan# 31  
 Delta R.T. -0.012 min  
 Lab File: BN021707.D  
 Acq: 10 Sep 2022 20:46

Instrument :  
 BNA\_N  
 ClientSampleId :  
 SP-303-20220908

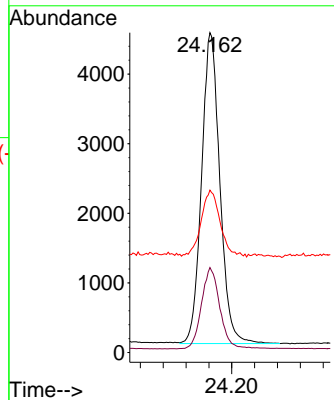
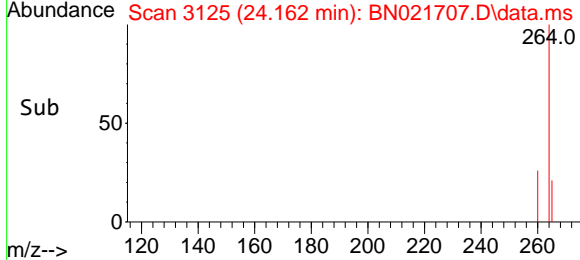


Tgt Ion: 264 Resp: 9908

Ion	Ratio	Lower	Upper
264	100		
260	26.6	21.0	31.6
265	50.8	32.2	48.2

Manual Integrations  
 APPROVED

Reviewed By : Christian Giraldo 09/12/2022  
 Supervised By : Jagrut Upadhyay 09/12/2022



Supervised By : Jagrut  
 Upadhyay  
 09/12/2022