

Data Path : Z:\svoasrv\HPCHEM1\BNA_N\Data\BN092220\
 Data File : BN011850.D
 Acq On : 22 Sep 2020 13:41
 Operator : CG/JU
 Sample : SSTDCCC0.4
 Misc :
 ALS Vial : 2 Sample Multiplier: 1

Instrument :
 BNA_N
 ClientSampleID :
 SSTDCCC0.4

Quant Time: Sep 22 14:57:44 2020
 Quant Method : Z:\svoasrv\HPCHEM1\BNA_N\Methods\8270-SIM-BN091720.M
 Quant Title : ASP BNA STANDARDS FOR 5 POINT CALIBRATION
 QLast Update : Tue Sep 22 14:36:55 2020
 Response via : Initial Calibration

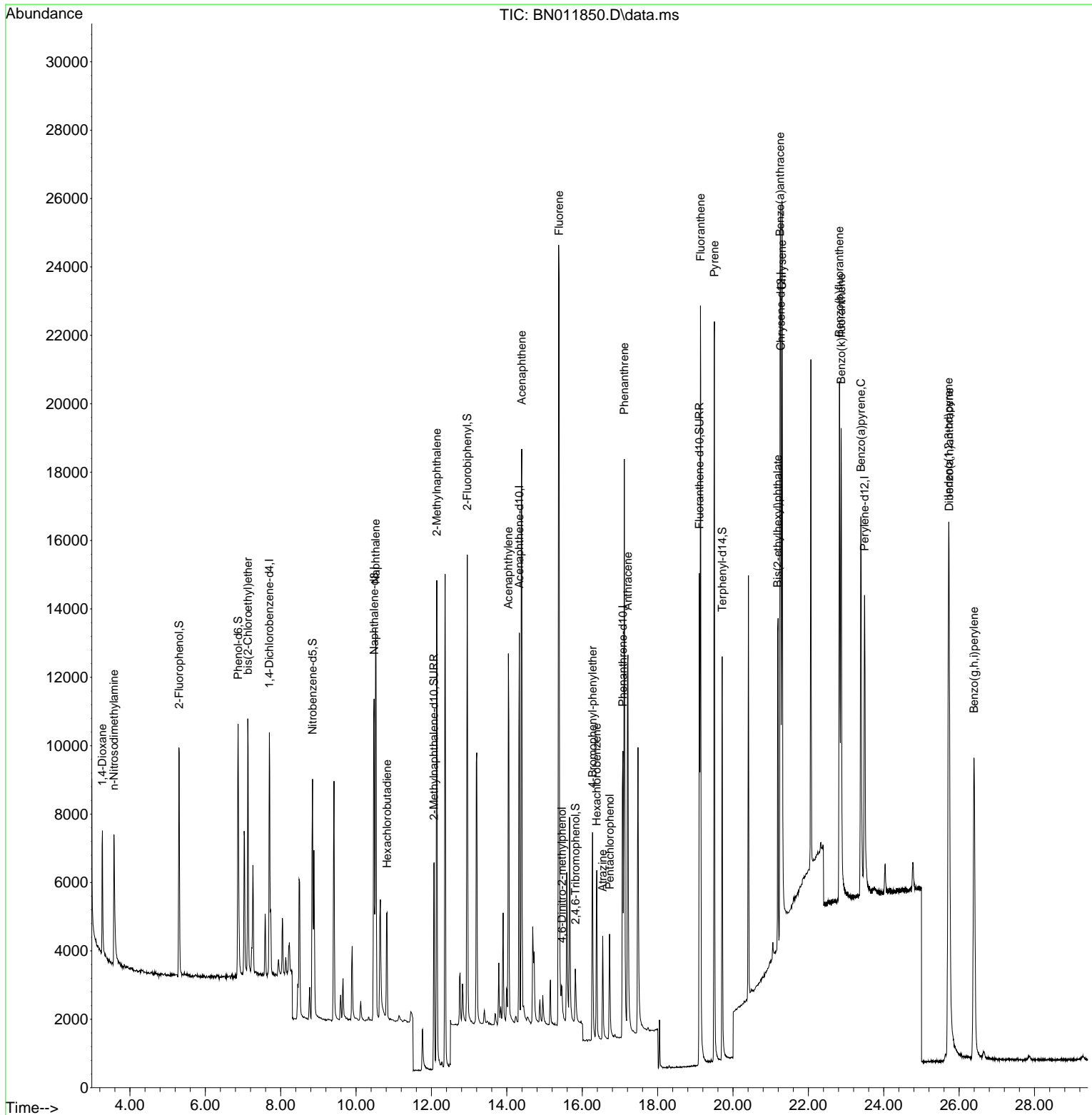
Compound	R.T.	QIon	Response	Conc	Units	Dev(Min)	
Internal Standards							
1) 1,4-Dichlorobenzene-d4	7.699	152	3239	0.40	ng	#	0.00
7) Naphthalene-d8	10.478	136	13595	0.40	ng	#	0.00
13) Acenaphthene-d10	14.332	164	7052	0.40	ng		0.00
19) Phenanthrene-d10	17.078	188	14642	0.40	ng		0.00
29) Chrysene-d12	21.269	240	12849	0.40	ng	#	0.00
36) Perylene-d12	23.491	264	12778	0.40	ng	#	0.00
System Monitoring Compounds							
4) 2-Fluorophenol	5.307	112	5076	0.53	ng		0.00
5) Phenol-d6	6.870	99	6509	0.55	ng		0.00
8) Nitrobenzene-d5	8.843	82	5930	0.43	ng		0.00
11) 2-Methylnaphthalene-d10	12.064	152	9019	0.37	ng		0.00
14) 2,4,6-Tribromophenol	15.816	330	1353	0.38	ng		0.00
15) 2-Fluorobiphenyl	12.949	172	11615	0.38	ng		0.00
27) Fluoranthene-d10	19.107	212	17420	0.38	ng		0.00
31) Terphenyl-d14	19.713	244	12969	0.44	ng		0.00
Target Compounds							
2) 1,4-Dioxane	3.270	88	2272	0.47	ng		96
3) n-Nitrosodimethylamine	3.576	42	3318	0.52	ng	#	82
6) bis(2-Chloroethyl)ether	7.127	93	5515	0.53	ng		95
9) Naphthalene	10.516	128	16342	0.43	ng		99
10) Hexachlorobutadiene	10.820	225	2636	0.30	ng	#	98
12) 2-Methylnaphthalene	12.140	142	10290	0.39	ng		98
16) Acenaphthylene	14.040	152	13501	0.40	ng		99
17) Acenaphthene	14.395	154	9898	0.42	ng		94
18) Fluorene	15.385	166	11881	0.40	ng		100
20) 4,6-Dinitro-2-methylph...	15.461	198	886	0.35	ng	#	12
21) 4-Bromophenyl-phenylether	16.275	248	3217	0.37	ng	#	82
22) Hexachlorobenzene	16.384	284	3809	0.35	ng	#	87
23) Atrazine	16.542	200	2832	0.36	ng	#	94
24) Pentachlorophenol	16.725	266	1639	0.38	ng		98
25) Phenanthrene	17.114	178	18675	0.40	ng		99
26) Anthracene	17.212	178	15926	0.40	ng		99
28) Fluoranthene	19.137	202	20156	0.37	ng	#	95
30) Pyrene	19.504	202	20495	0.46	ng		99
32) Benzo(a)anthracene	21.248	228	17192	0.40	ng		98
33) Chrysene	21.301	228	18550	0.42	ng		98
34) Bis(2-ethylhexyl)phtha...	21.184	149	10485	0.47	ng	#	91
35) Indeno(1,2,3-cd)pyrene	25.719	276	21721	0.39	ng	#	91
37) Benzo(b)fluoranthene	22.823	252	18618	0.39	ng	#	85
38) Benzo(k)fluoranthene	22.868	252	19432	0.39	ng	#	87
39) Benzo(a)pyrene	23.391	252	16761	0.40	ng	#	75
40) Dibenzo(a,h)anthracene	25.733	278	17536	0.37	ng	#	87
41) Benzo(g,h,i)perylene	26.393	276	19065	0.38	ng	#	88

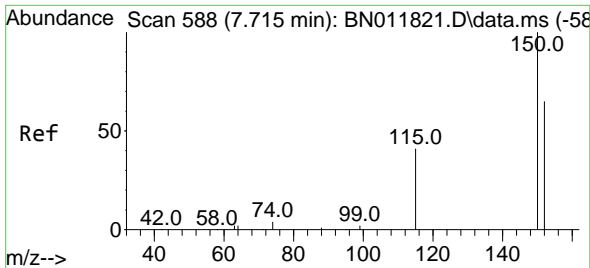
(#) = qualifier out of range (m) = manual integration (+) = signals summed

Data Path : Z:\svoasrv\HPCHEM1\BNA_N\Data\BN092220\
 Data File : BN011850.D
 Acq On : 22 Sep 2020 13:41
 Operator : CG/JU
 Sample : SSTDCCC0.4
 Misc :
 ALS Vial : 2 Sample Multiplier: 1

Instrument :
 BNA_N
 Client Sampled :
 SSTDCCC0.4

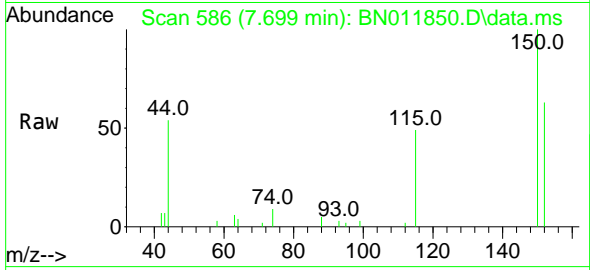
Quant Time: Sep 22 14:57:44 2020
 Quant Method : Z:\svoasrv\HPCHEM1\BNA_N\Methods\8270-SIM-BN091720.M
 Quant Title : ASP BNA STANDARDS FOR 5 POINT CALIBRATION
 QLast Update : Tue Sep 22 14:36:55 2020
 Response via : Initial Calibration



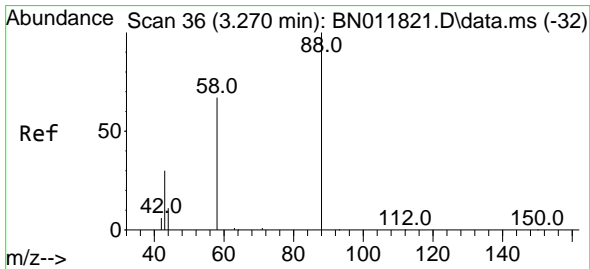
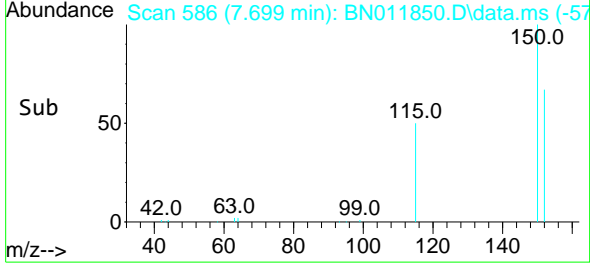
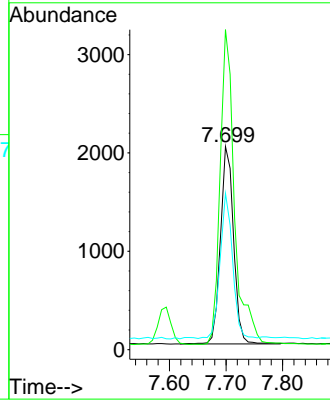


#1
 1,4-Dichlorobenzene-d4
 Concen: 0.40 ng
 RT: 7.699 min Scan# 586
 Delta R.T. 0.000 min
 Lab File: BN011850.D
 Acq: 22 Sep 2020 13:41

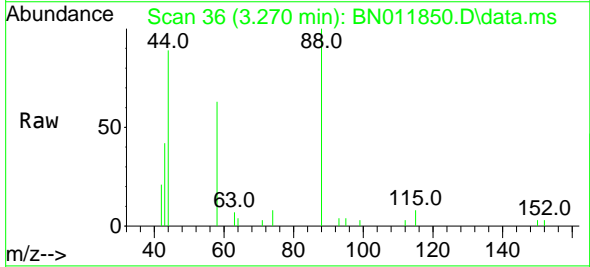
Instrument :
 BNA_N
 ClientSampled :
 SSTDCCC0.4



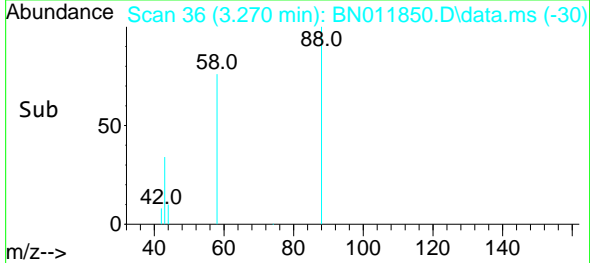
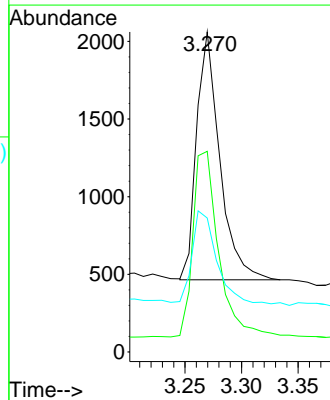
Tgt Ion:152 Resp: 3239
 Ion Ratio Lower Upper
 152 100
 150 157.5 118.3 177.5
 115 76.9 51.3 76.9#

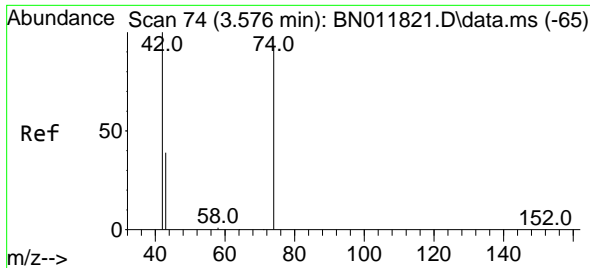


#2
 1,4-Dioxane
 Concen: 0.47 ng
 RT: 3.270 min Scan# 36
 Delta R.T. 0.000 min
 Lab File: BN011850.D
 Acq: 22 Sep 2020 13:41



Tgt Ion: 88 Resp: 2272
 Ion Ratio Lower Upper
 88 100
 58 83.0 63.3 94.9
 43 39.6 33.0 49.4



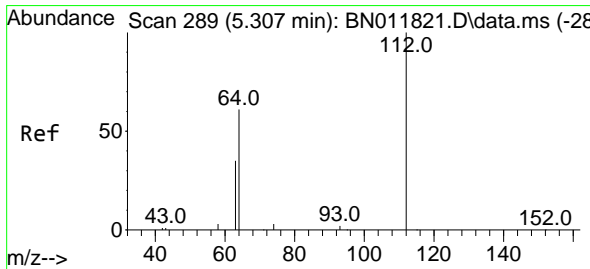
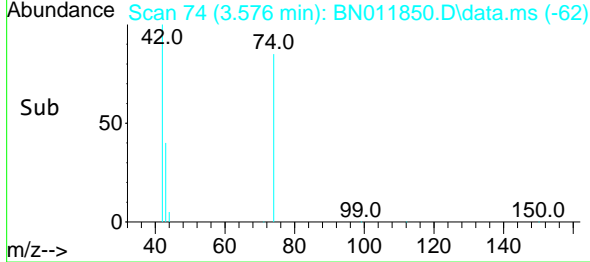
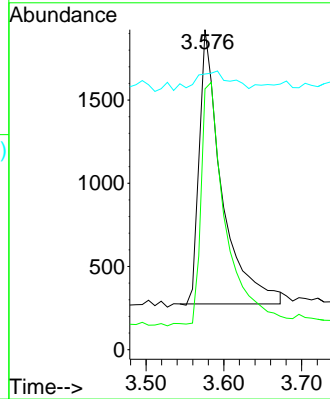
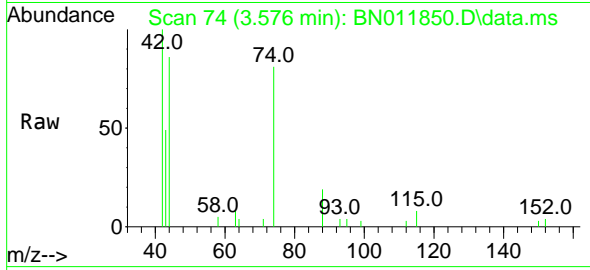


#3
 n-Nitrosodimethylamine
 Concen: 0.52 ng
 RT: 3.576 min Scan# 74
 Delta R.T. 0.000 min
 Lab File: BN011850.D
 Acq: 22 Sep 2020 13:41

Instrument :
 BNA_N
 ClientSampled :
 SSTDCCC0.4

Tgt Ion: 42 Resp: 3318

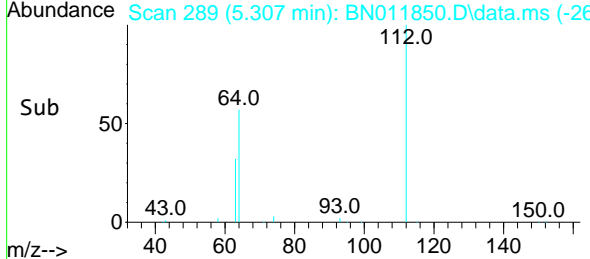
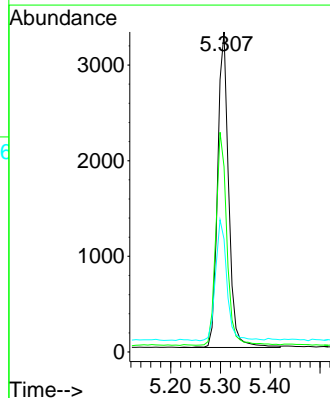
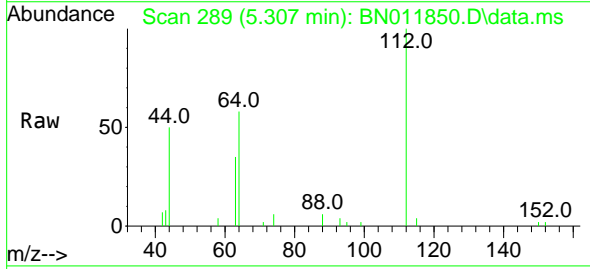
Ion	Ratio	Lower	Upper
42	100		
74	97.7	64.4	96.6#
44	10.9	6.7	10.1#

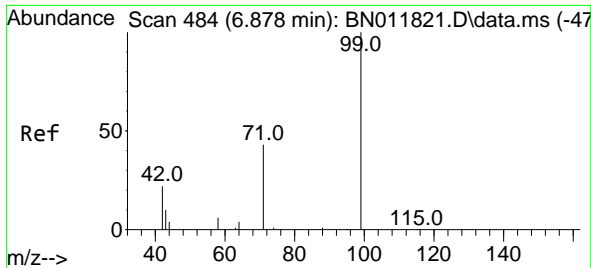


#4
 2-Fluorophenol
 Concen: 0.53 ng
 RT: 5.307 min Scan# 289
 Delta R.T. 0.000 min
 Lab File: BN011850.D
 Acq: 22 Sep 2020 13:41

Tgt Ion: 112 Resp: 5076

Ion	Ratio	Lower	Upper
112	100		
64	67.8	49.0	73.6
63	39.5	31.8	47.6

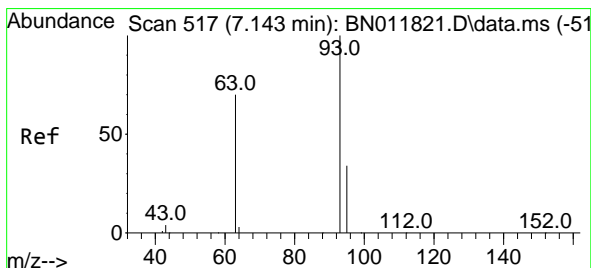
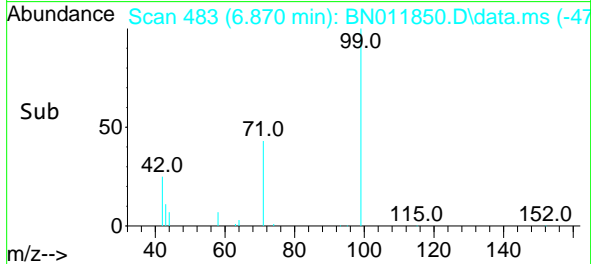
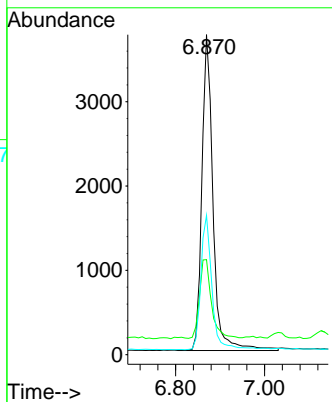
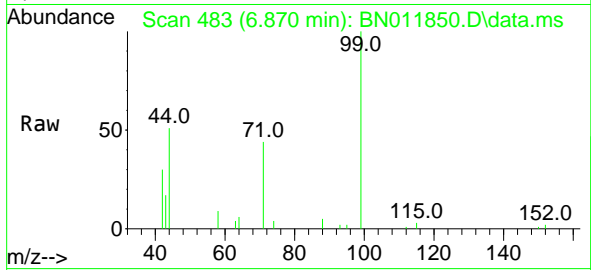




#5
 Phenol-d6
 Concen: 0.55 ng
 RT: 6.870 min Scan# 483
 Delta R.T. 0.000 min
 Lab File: BN011850.D
 Acq: 22 Sep 2020 13:41

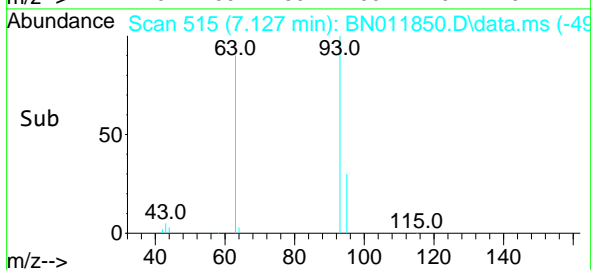
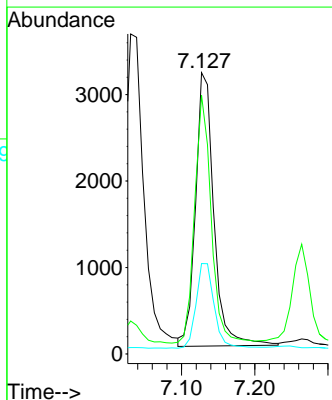
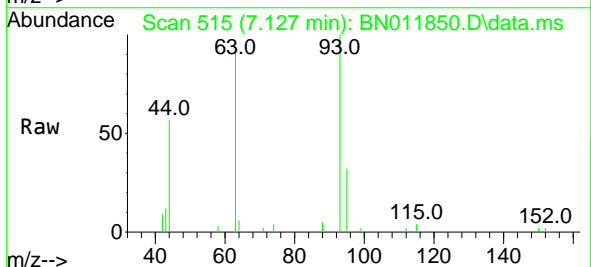
Instrument :
 BNA_N
 ClientSampleId :
 SSTDCCC0.4

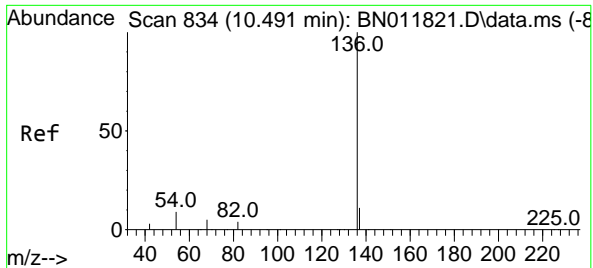
Tgt Ion	Resp	Lower	Upper
99	6509		
99	100		
42	26.7	23.4	35.0
71	42.8	38.1	57.1



#6
 bis(2-Chloroethyl)ether
 Concen: 0.53 ng
 RT: 7.127 min Scan# 515
 Delta R.T. 0.000 min
 Lab File: BN011850.D
 Acq: 22 Sep 2020 13:41

Tgt Ion	Resp	Lower	Upper
93	5515		
93	100		
63	81.5	61.1	91.7
95	30.6	25.5	38.3



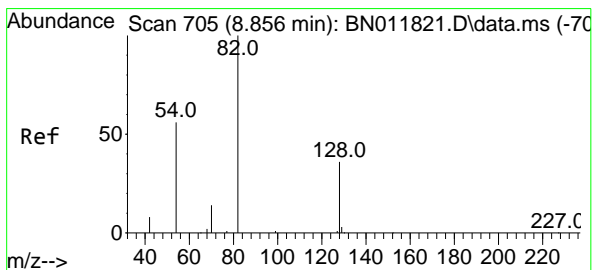
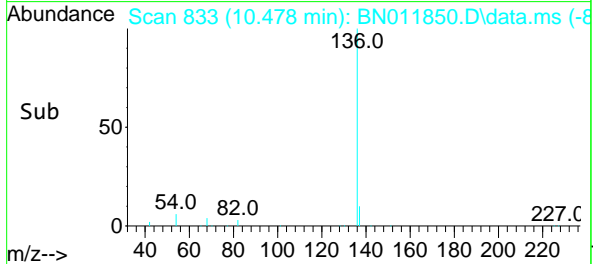
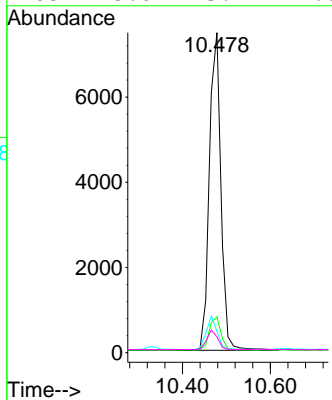
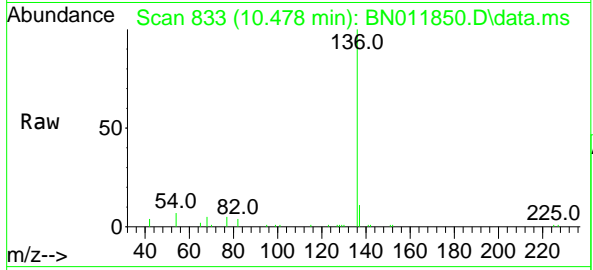


#7
 Naphthalene-d8
 Concen: 0.40 ng
 RT: 10.478 min Scan# 833
 Delta R.T. 0.000 min
 Lab File: BN011850.D
 Acq: 22 Sep 2020 13:41

Instrument :
 BNA_N
 ClientSampleId :
 SSTDCCC0.4

Tgt Ion:136 Resp: 13595

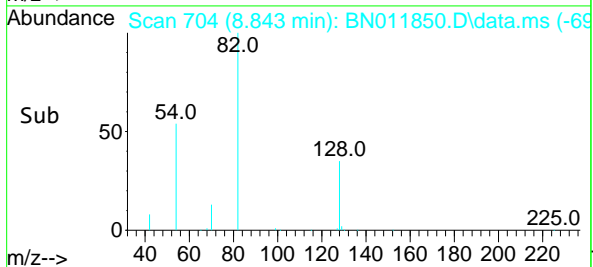
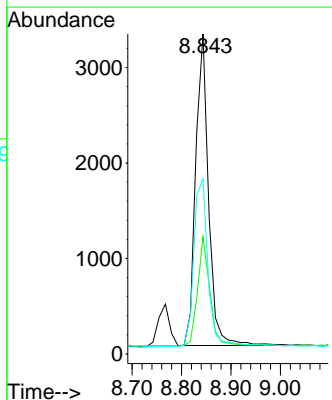
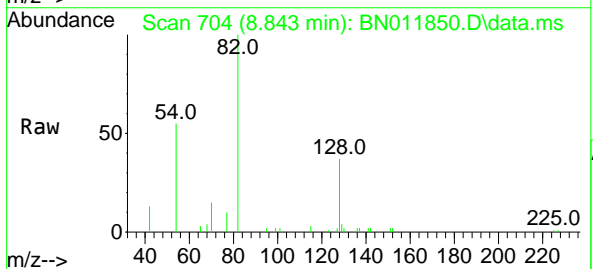
Ion	Ratio	Lower	Upper
136	100		
137	11.2	9.5	14.3
54	6.7	5.6	8.4
68	5.0	3.2	4.8

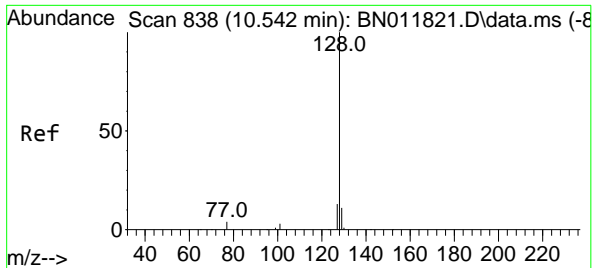


#8
 Nitrobenzene-d5
 Concen: 0.43 ng
 RT: 8.843 min Scan# 704
 Delta R.T. 0.000 min
 Lab File: BN011850.D
 Acq: 22 Sep 2020 13:41

Tgt Ion: 82 Resp: 5930

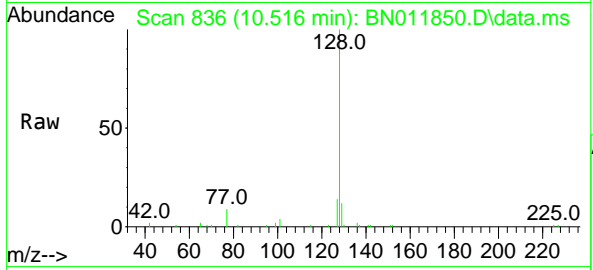
Ion	Ratio	Lower	Upper
82	100		
128	36.7	34.2	51.2
54	54.8	43.1	64.7





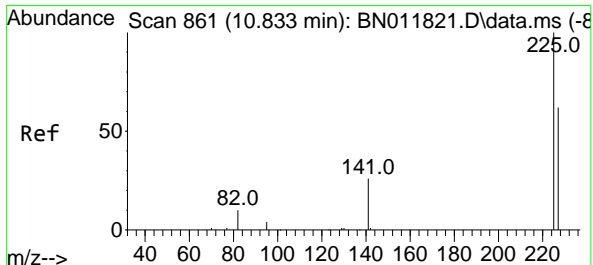
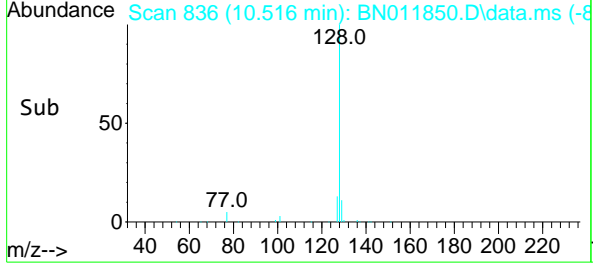
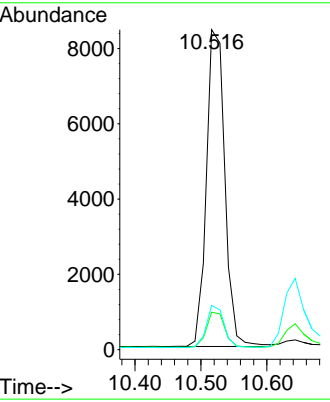
#9
 Naphthalene
 Concen: 0.43 ng
 RT: 10.516 min Scan# 836
 Delta R.T. 0.000 min
 Lab File: BN011850.D
 Acq: 22 Sep 2020 13:41

Instrument :
 BNA_N
ClientSampled :
 SSTDCCC0.4

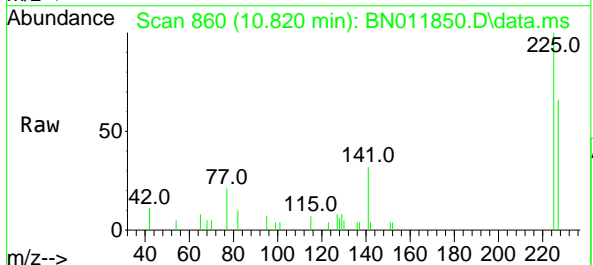


Tgt Ion:128 Resp: 16342

Ion	Ratio	Lower	Upper
128	100		
129	11.7	9.7	14.5
127	13.8	11.0	16.4

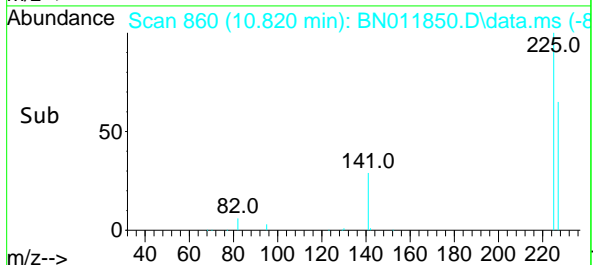
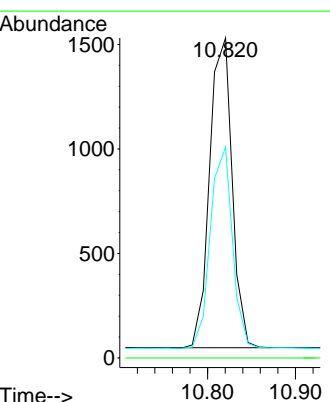


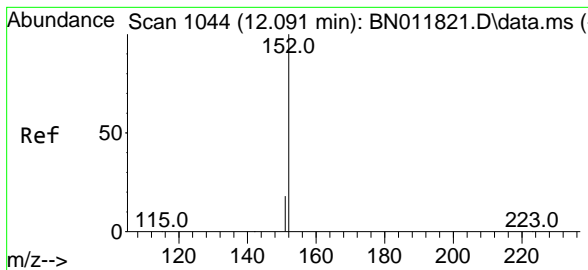
#10
 Hexachlorobutadiene
 Concen: 0.30 ng
 RT: 10.820 min Scan# 860
 Delta R.T. 0.000 min
 Lab File: BN011850.D
 Acq: 22 Sep 2020 13:41



Tgt Ion:225 Resp: 2636

Ion	Ratio	Lower	Upper
225	100		
223	0.0	0.0	0.0
227	63.5	51.9	77.9

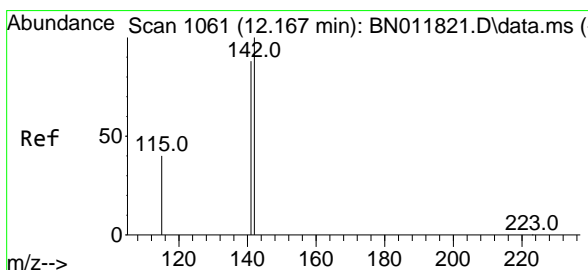
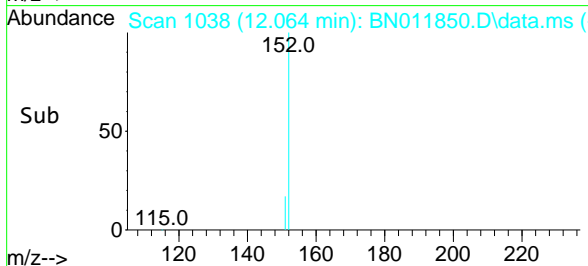
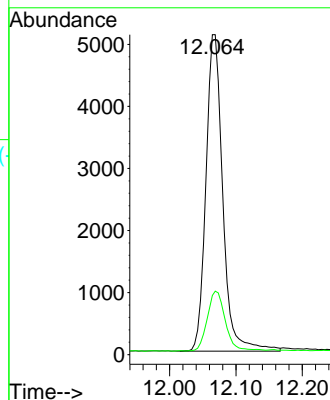
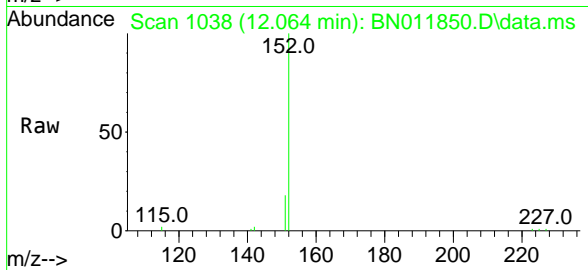




#11
 2-Methylnaphthalene-d10
 Concen: 0.37 ng
 RT: 12.064 min Scan# 1038
 Delta R.T. 0.000 min
 Lab File: BN011850.D
 Acq: 22 Sep 2020 13:41

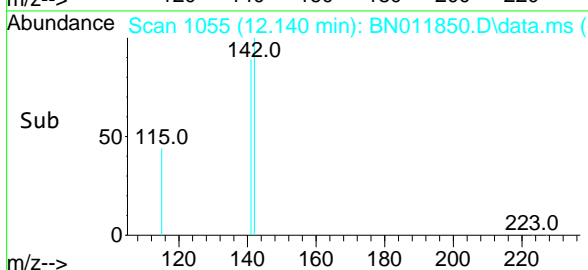
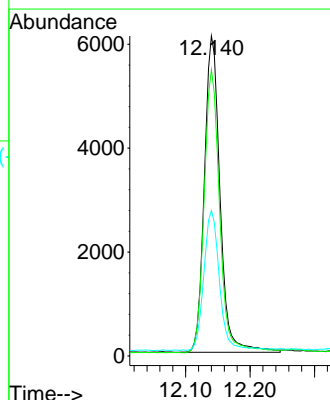
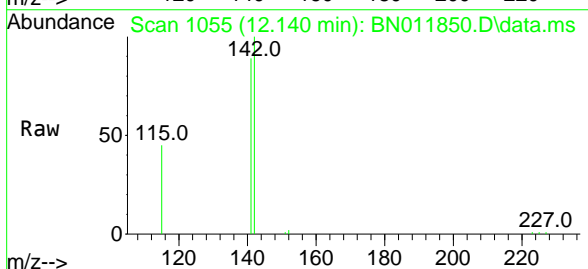
Instrument :
 BNA_N
 ClientSampleId :
 SSTDCCC0.4

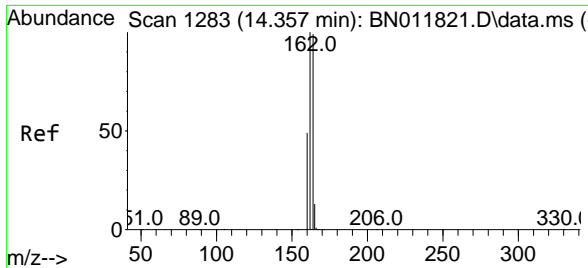
Tgt Ion:152 Resp: 9019
 Ion Ratio Lower Upper
 152 100
 151 20.2 16.7 25.1



#12
 2-Methylnaphthalene
 Concen: 0.39 ng
 RT: 12.140 min Scan# 1055
 Delta R.T. 0.000 min
 Lab File: BN011850.D
 Acq: 22 Sep 2020 13:41

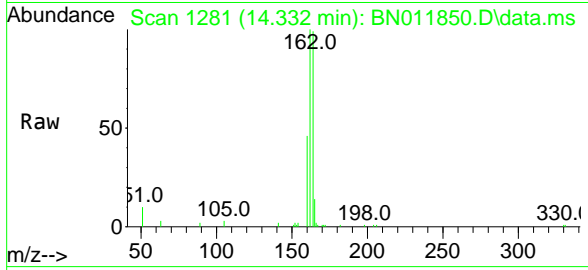
Tgt Ion:142 Resp: 10290
 Ion Ratio Lower Upper
 142 100
 141 89.4 70.0 105.0
 115 45.4 35.8 53.6





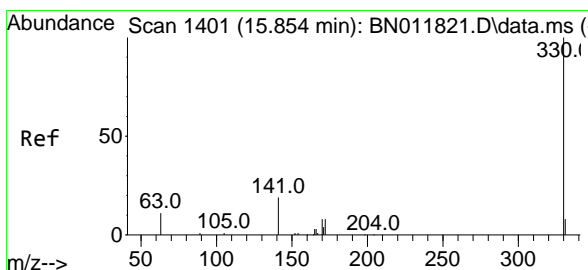
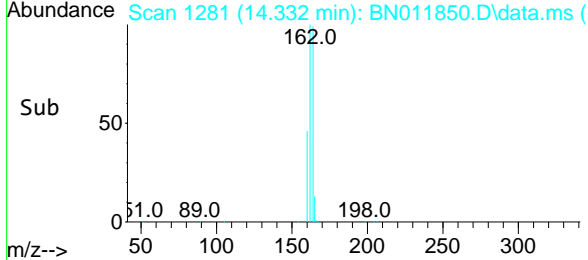
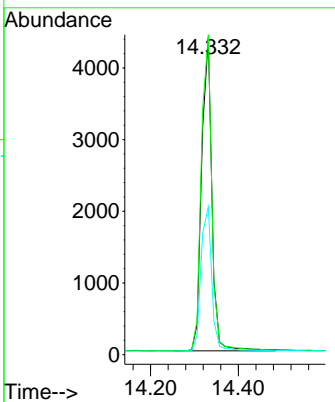
#13
 Acenaphthene-d10
 Concen: 0.40 ng
 RT: 14.332 min Scan# 1281
 Delta R.T. 0.000 min
 Lab File: BN011850.D
 Acq: 22 Sep 2020 13:41

Instrument :
 BNA_N
ClientSampled :
 SSTDCCC0.4

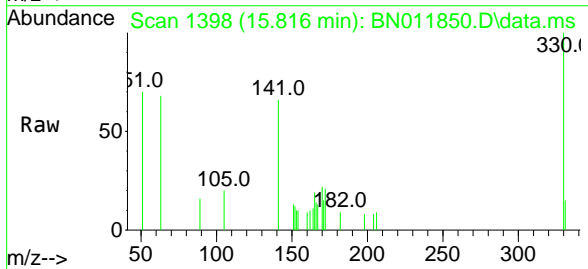


Tgt Ion:164 Resp: 7052

Ion	Ratio	Lower	Upper
164	100		
162	101.1	83.6	125.4
160	46.6	41.2	61.8

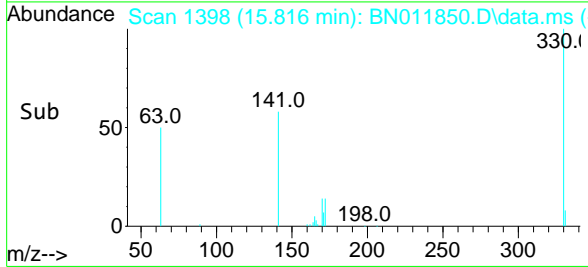
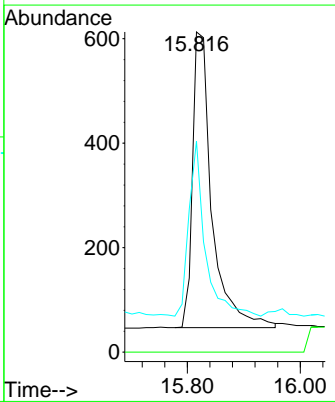


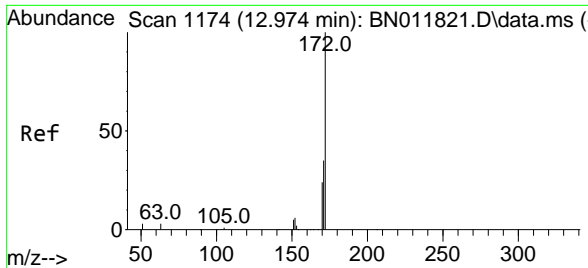
#14
 2,4,6-Tribromophenol
 Concen: 0.38 ng
 RT: 15.816 min Scan# 1398
 Delta R.T. 0.000 min
 Lab File: BN011850.D
 Acq: 22 Sep 2020 13:41



Tgt Ion:330 Resp: 1353

Ion	Ratio	Lower	Upper
330	100		
332	0.0	0.0	0.0
141	49.4	33.7	50.5



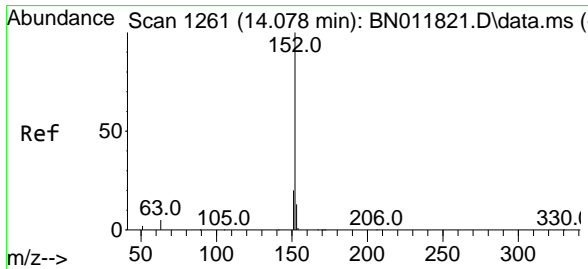
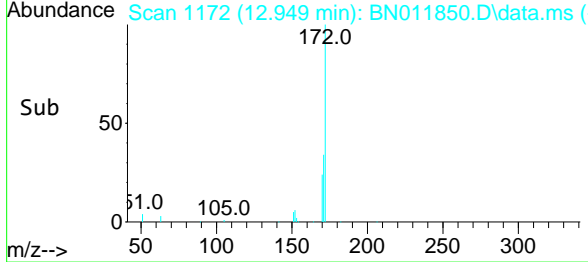
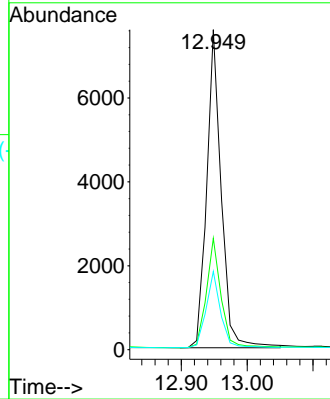
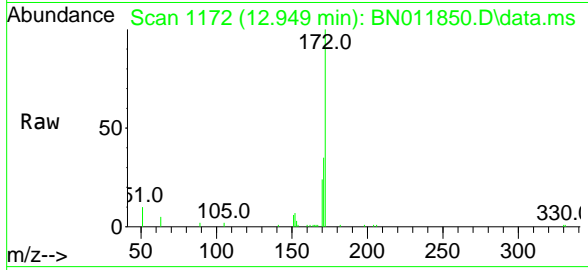


#15
 2-Fluorobiphenyl
 Concen: 0.38 ng
 RT: 12.949 min Scan# 1172
 Delta R.T. 0.000 min
 Lab File: BN011850.D
 Acq: 22 Sep 2020 13:41

Instrument :
 BNA_N
 ClientSampled :
 SSTDCCC0.4

Tgt Ion:172 Resp: 11615

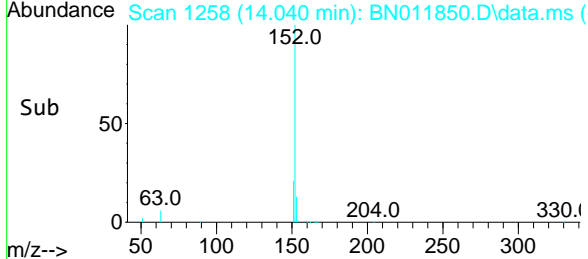
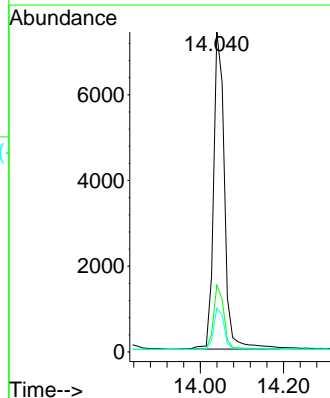
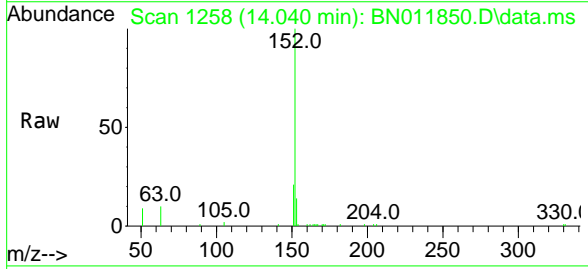
Ion	Ratio	Lower	Upper
172	100		
171	34.8	27.4	41.2
170	24.5	17.8	26.6

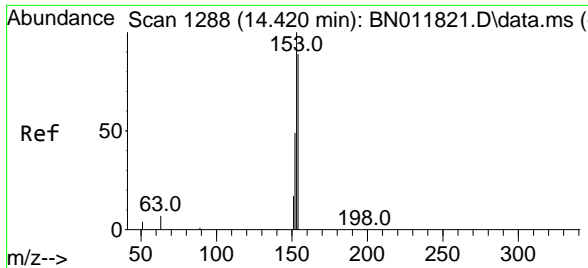


#16
 Acenaphthylene
 Concen: 0.40 ng
 RT: 14.040 min Scan# 1258
 Delta R.T. 0.000 min
 Lab File: BN011850.D
 Acq: 22 Sep 2020 13:41

Tgt Ion:152 Resp: 13501

Ion	Ratio	Lower	Upper
152	100		
151	19.5	15.9	23.9
153	12.7	10.5	15.7



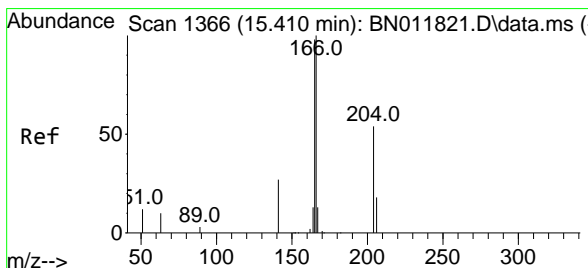
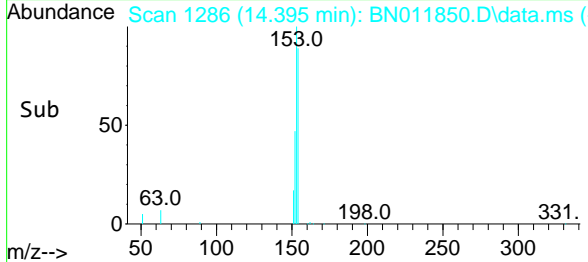
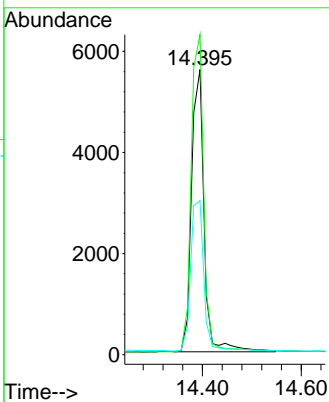
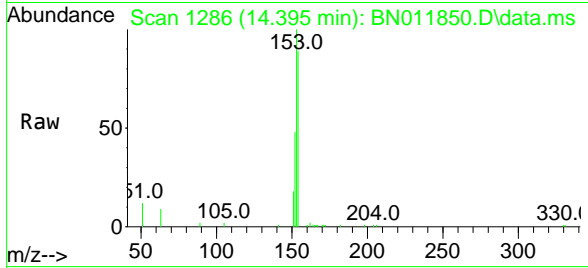


#17
 Acenaphthene
 Concen: 0.42 ng
 RT: 14.395 min Scan# 1286
 Delta R.T. 0.000 min
 Lab File: BN011850.D
 Acq: 22 Sep 2020 13:41

Instrument :
 BNA_N
 ClientSampled :
 SSTDCCC0.4

Tgt Ion:154 Resp: 9898

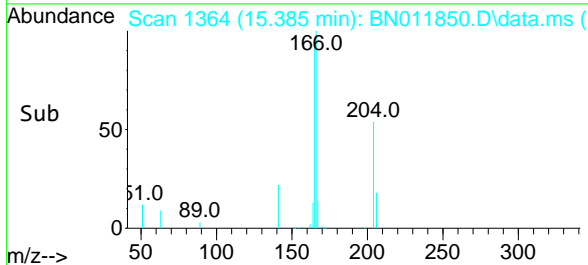
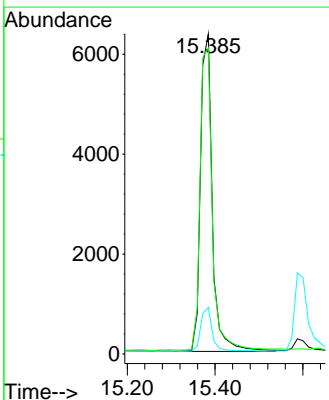
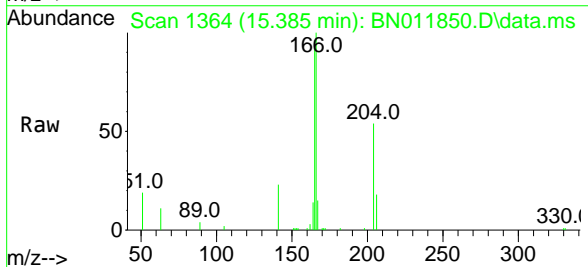
Ion	Ratio	Lower	Upper
154	100		
153	112.3	83.4	125.2
152	56.1	42.8	64.2

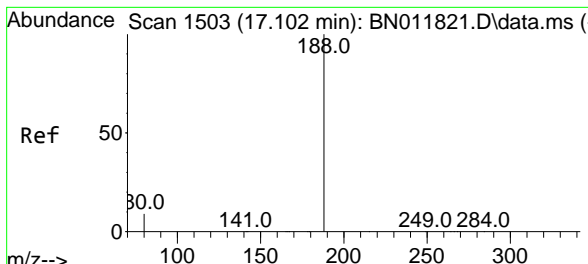


#18
 Fluorene
 Concen: 0.40 ng
 RT: 15.385 min Scan# 1364
 Delta R.T. 0.000 min
 Lab File: BN011850.D
 Acq: 22 Sep 2020 13:41

Tgt Ion:166 Resp: 11881

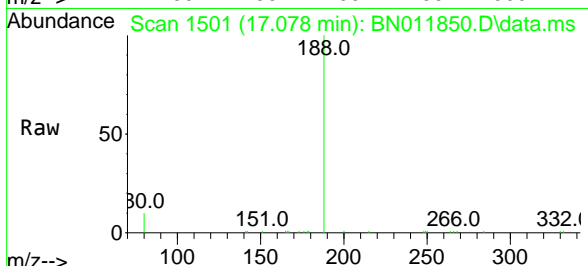
Ion	Ratio	Lower	Upper
166	100		
165	98.5	78.8	118.2
167	13.7	11.2	16.8





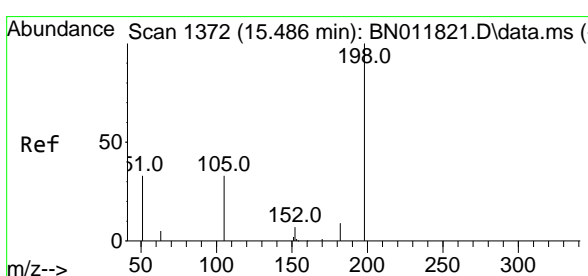
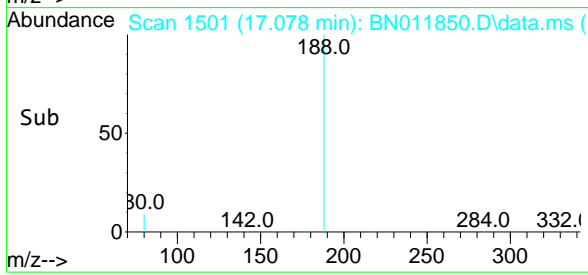
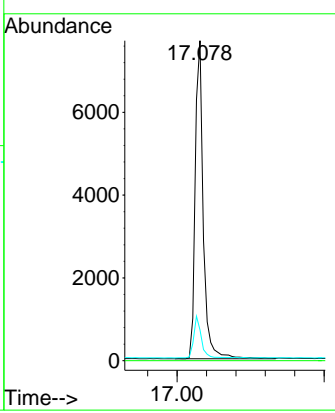
#19
 Phenanthrene-d10
 Concen: 0.40 ng
 RT: 17.078 min Scan# 1501
 Delta R.T. 0.000 min
 Lab File: BN011850.D
 Acq: 22 Sep 2020 13:41

Instrument :
 BNA_N
ClientSampled :
 SSTDCCC0.4



Tgt Ion:188 Resp: 14642

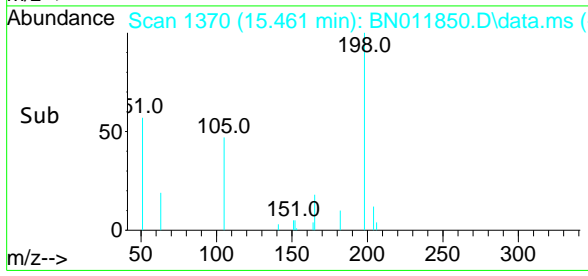
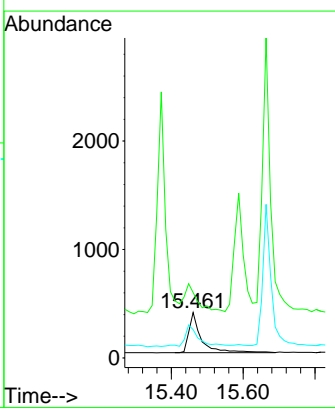
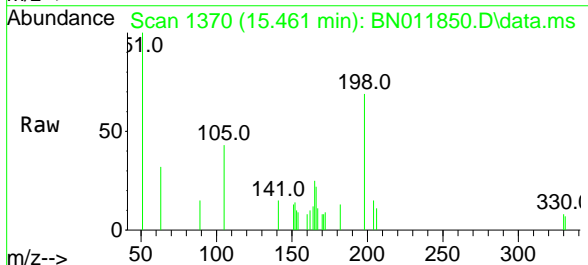
Ion	Ratio	Lower	Upper
188	100		
94	0.0	0.0	0.0
80	9.6	7.7	11.5

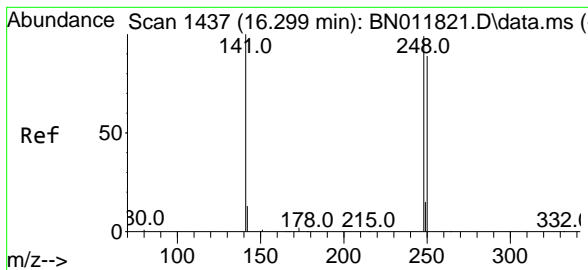


#20
 4,6-Dinitro-2-methylphenol
 Concen: 0.35 ng
 RT: 15.461 min Scan# 1370
 Delta R.T. 0.000 min
 Lab File: BN011850.D
 Acq: 22 Sep 2020 13:41

Tgt Ion:198 Resp: 886

Ion	Ratio	Lower	Upper
198	100		
51	144.3	45.0	67.4#
105	62.4	30.4	45.6#



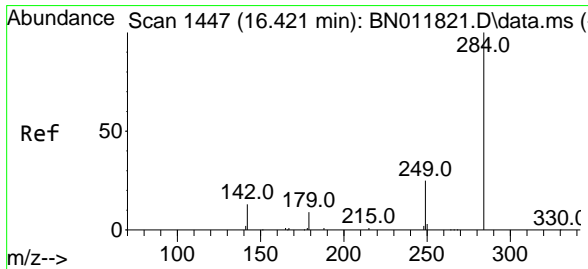
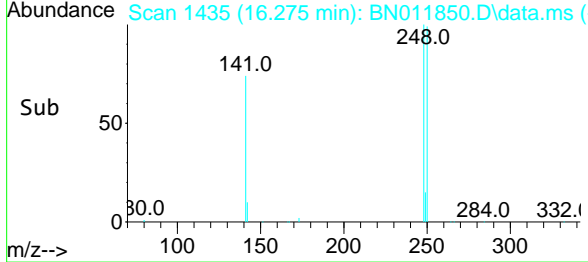
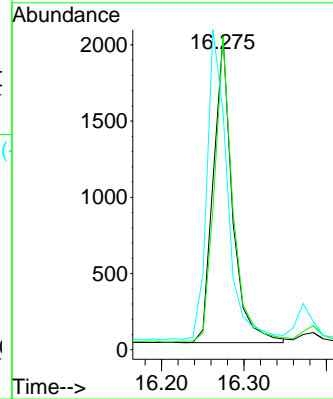
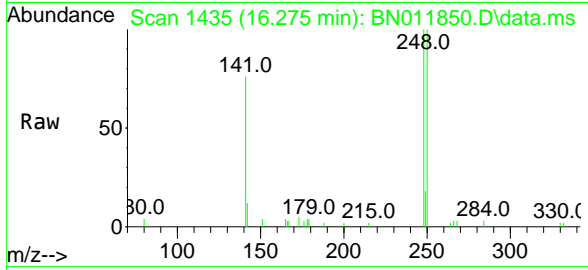


#21
 4-Bromophenyl-phenylether
 Concen: 0.37 ng
 RT: 16.275 min Scan# 1435
 Delta R.T. 0.000 min
 Lab File: BN011850.D
 Acq: 22 Sep 2020 13:41

Instrument :
 BNA_N
 ClientSampleId :
 SSTDCCC0.4

Tgt Ion:248 Resp: 3217

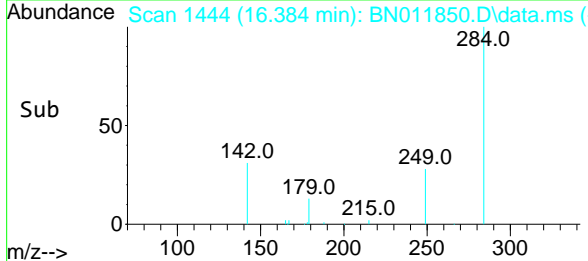
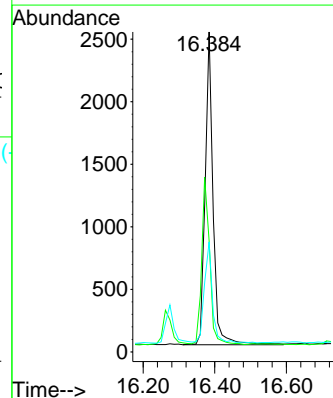
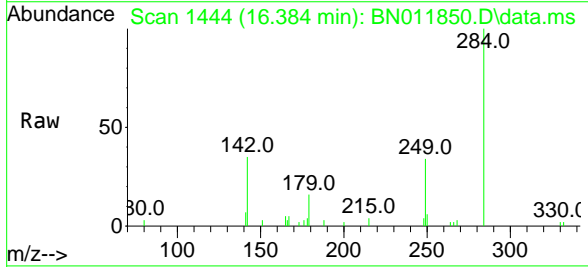
Ion	Ratio	Lower	Upper
248	100		
250	99.6	82.7	124.1
141	75.6	33.7	50.5#

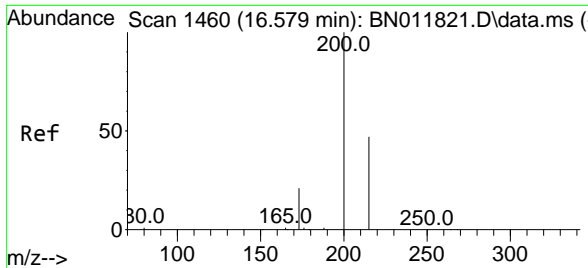


#22
 Hexachlorobenzene
 Concen: 0.35 ng
 RT: 16.384 min Scan# 1444
 Delta R.T. 0.000 min
 Lab File: BN011850.D
 Acq: 22 Sep 2020 13:41

Tgt Ion:284 Resp: 3809

Ion	Ratio	Lower	Upper
284	100		
142	54.1	32.4	48.6#
249	31.9	26.8	40.2



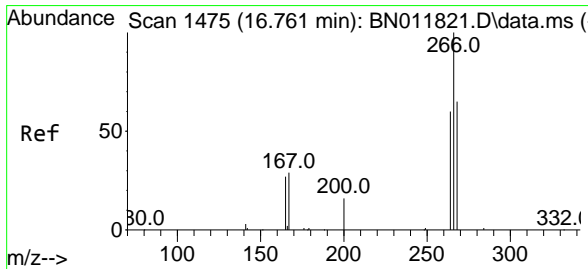
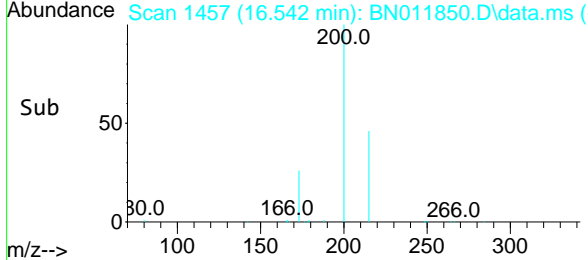
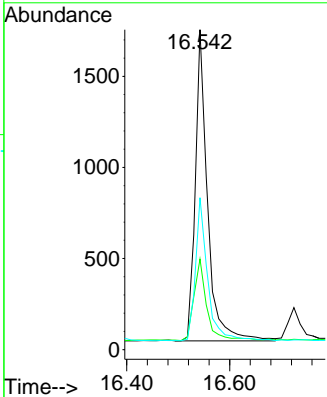
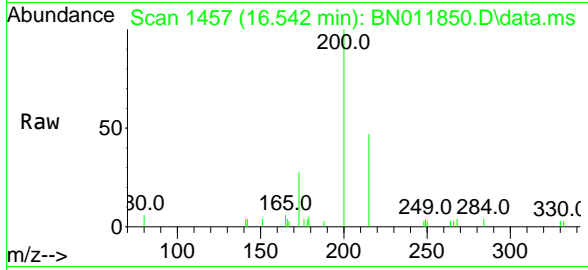


#23
 Atrazine
 Concen: 0.36 ng
 RT: 16.542 min Scan# 1457
 Delta R.T. 0.000 min
 Lab File: BN011850.D
 Acq: 22 Sep 2020 13:41

Instrument :
 BNA_N
 ClientSampled :
 SSTDCCC0.4

Tgt Ion:200 Resp: 2832

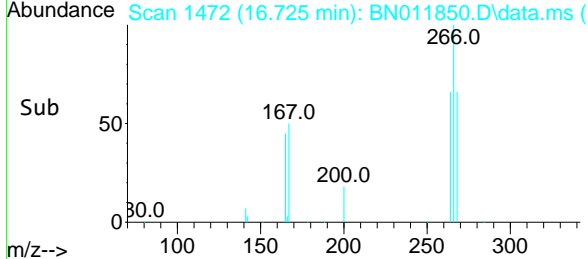
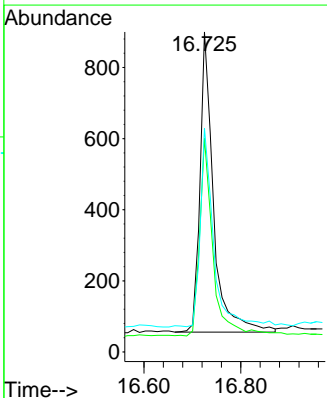
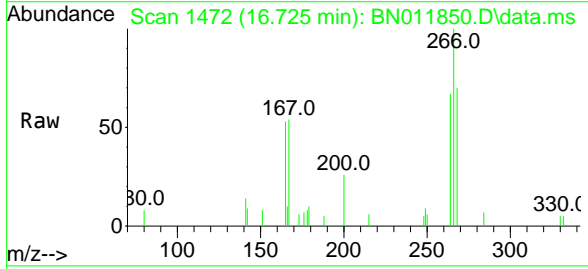
Ion	Ratio	Lower	Upper
200	100		
173	28.4	18.7	28.1#
215	47.5	40.2	60.4

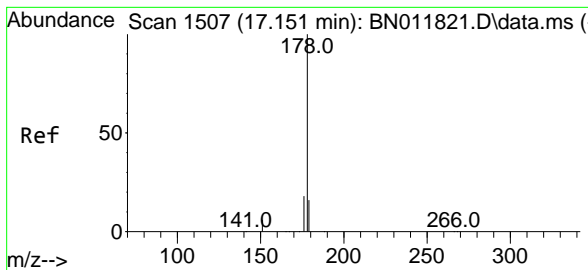


#24
 Pentachlorophenol
 Concen: 0.38 ng
 RT: 16.725 min Scan# 1472
 Delta R.T. 0.000 min
 Lab File: BN011850.D
 Acq: 22 Sep 2020 13:41

Tgt Ion:266 Resp: 1639

Ion	Ratio	Lower	Upper
266	100		
264	65.8	51.2	76.8
268	67.1	52.4	78.6

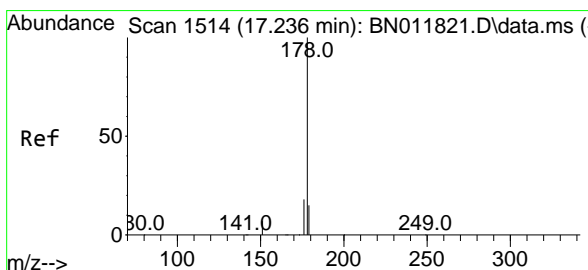
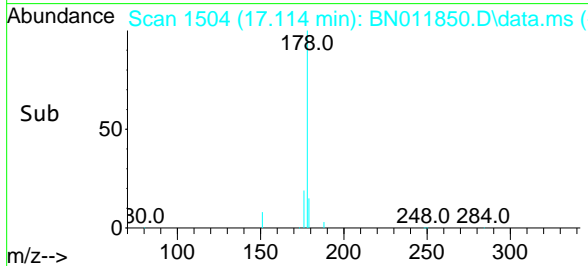
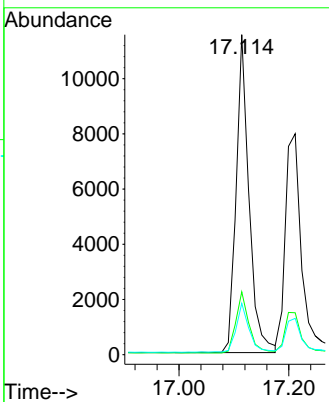
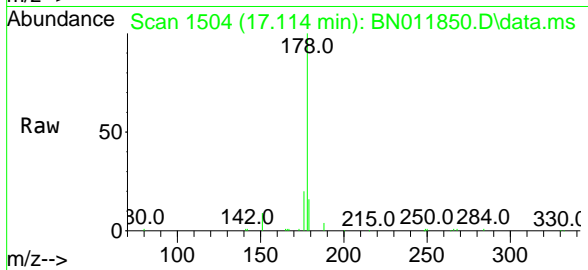




#25
 Phenanthrene
 Concen: 0.40 ng
 RT: 17.114 min Scan# 1504
 Delta R.T. 0.000 min
 Lab File: BN011850.D
 Acq: 22 Sep 2020 13:41

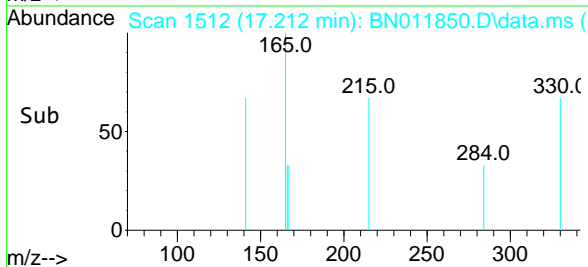
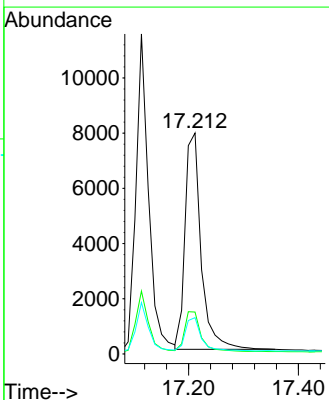
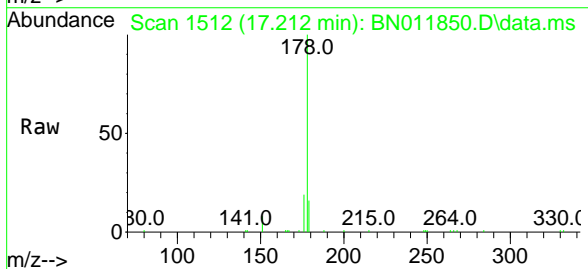
Instrument :
 BNA_N
 ClientSampleId :
 SSTDCCC0.4

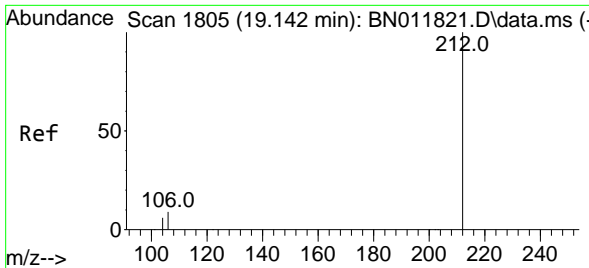
Tgt Ion	Resp	Lower	Upper
178	18675		
176	19.5	15.1	22.7
179	15.6	12.3	18.5



#26
 Anthracene
 Concen: 0.40 ng
 RT: 17.212 min Scan# 1512
 Delta R.T. 0.000 min
 Lab File: BN011850.D
 Acq: 22 Sep 2020 13:41

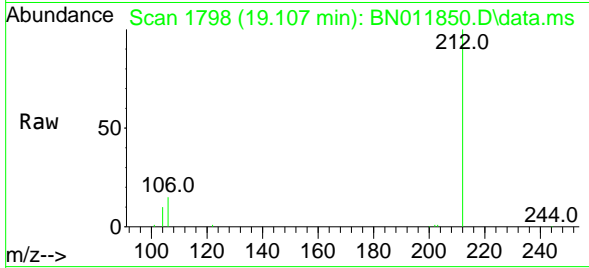
Tgt Ion	Resp	Lower	Upper
178	15926		
176	18.7	14.6	21.8
179	14.9	12.4	18.6



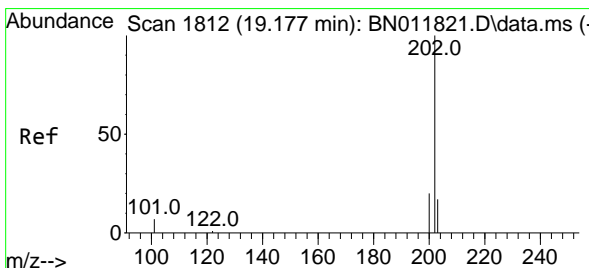
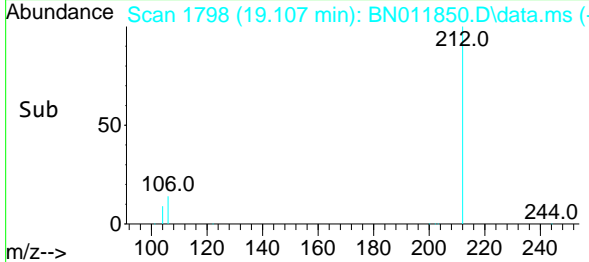
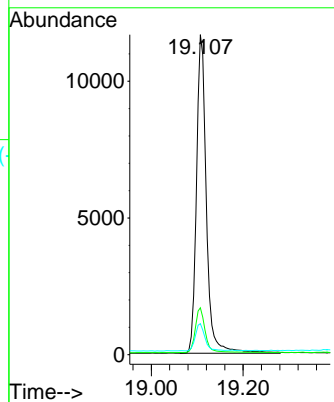


#27
 Fluoranthene-d10
 Concen: 0.38 ng
 RT: 19.107 min Scan# 1798
 Delta R.T. 0.000 min
 Lab File: BN011850.D
 Acq: 22 Sep 2020 13:41

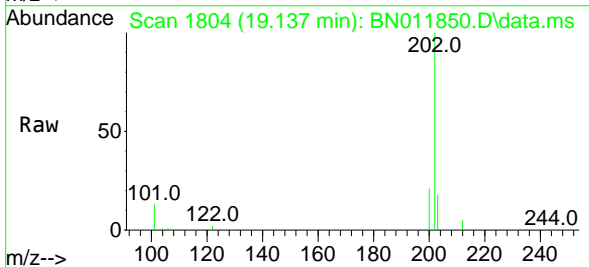
Instrument :
 BNA_N
 ClientSampleId :
 SSTDCCC0.4



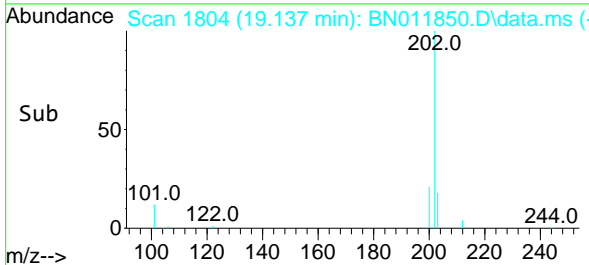
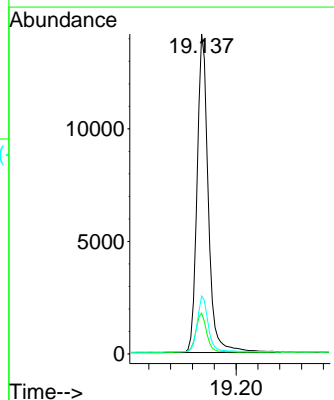
Tgt Ion:212 Resp: 17420
 Ion Ratio Lower Upper
 212 100
 106 14.1 6.4 9.6#
 104 8.3 3.9 5.9#

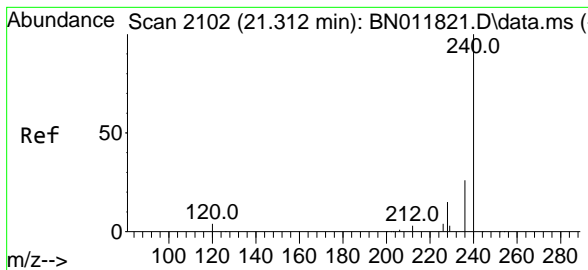


#28
 Fluoranthene
 Concen: 0.37 ng
 RT: 19.137 min Scan# 1804
 Delta R.T. 0.000 min
 Lab File: BN011850.D
 Acq: 22 Sep 2020 13:41



Tgt Ion:202 Resp: 20156
 Ion Ratio Lower Upper
 202 100
 101 12.4 5.4 8.2#
 203 17.0 13.8 20.6

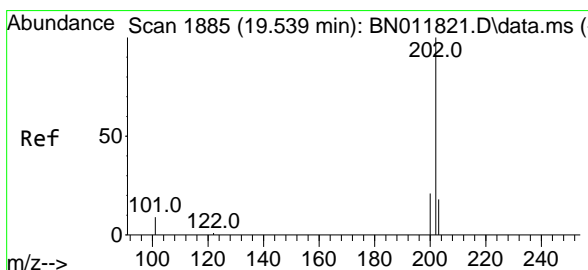
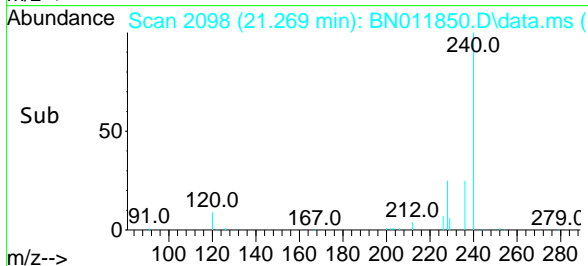
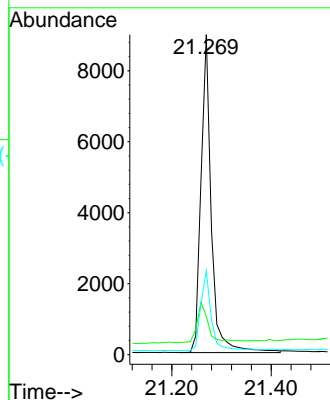
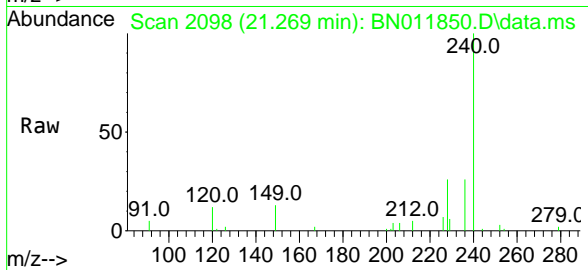




#29
 Chrysene-d12
 Concen: 0.40 ng
 RT: 21.269 min Scan# 2098
 Delta R.T. 0.000 min
 Lab File: BN011850.D
 Acq: 22 Sep 2020 13:41

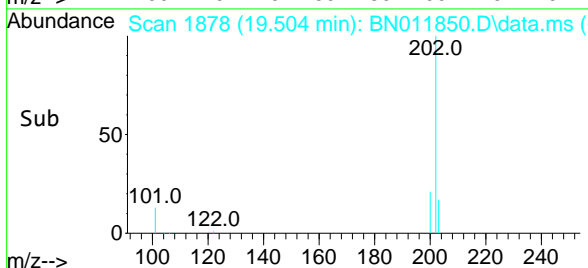
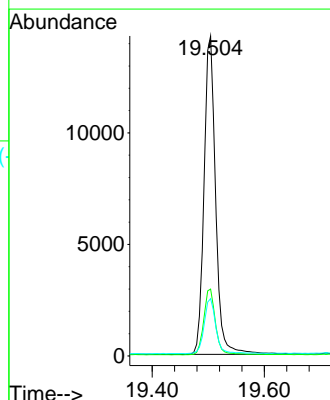
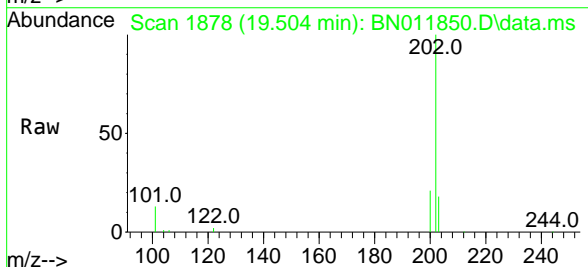
Instrument :
 BNA_N
 ClientSampleId :
 SSTDCCC0.4

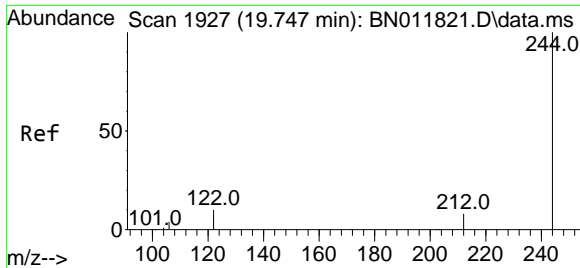
Tgt Ion:240 Resp: 12849
 Ion Ratio Lower Upper
 240 100
 120 12.0 3.5 5.3#
 236 26.2 20.5 30.7



#30
 Pyrene
 Concen: 0.46 ng
 RT: 19.504 min Scan# 1878
 Delta R.T. 0.000 min
 Lab File: BN011850.D
 Acq: 22 Sep 2020 13:41

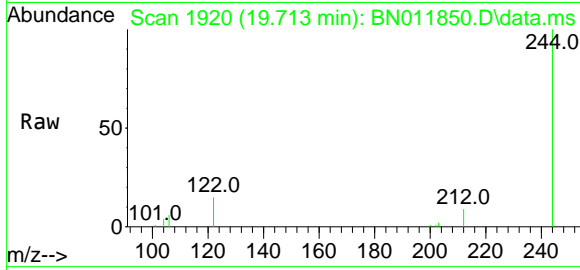
Tgt Ion:202 Resp: 20495
 Ion Ratio Lower Upper
 202 100
 200 21.0 16.5 24.7
 203 17.5 13.9 20.9



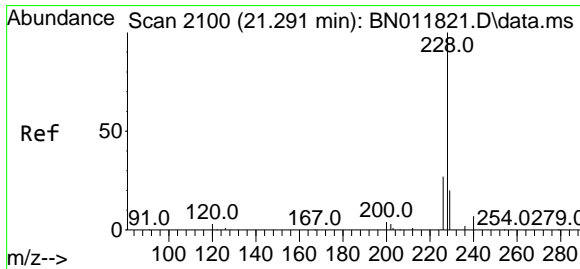
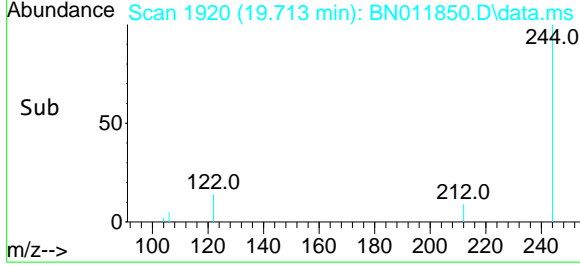
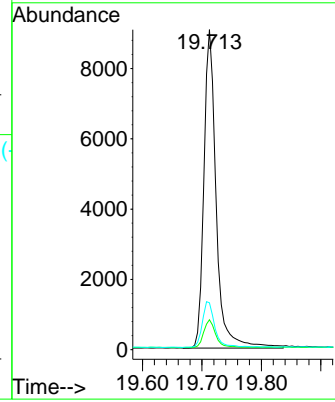


#31
 Terphenyl-d14
 Concen: 0.44 ng
 RT: 19.713 min Scan# 1920
 Delta R.T. 0.000 min
 Lab File: BN011850.D
 Acq: 22 Sep 2020 13:41

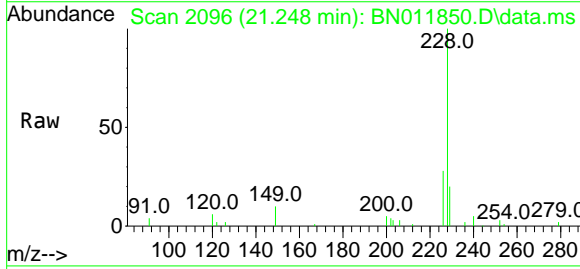
Instrument :
 BNA_N
ClientSampled :
 SSTDCCC0.4



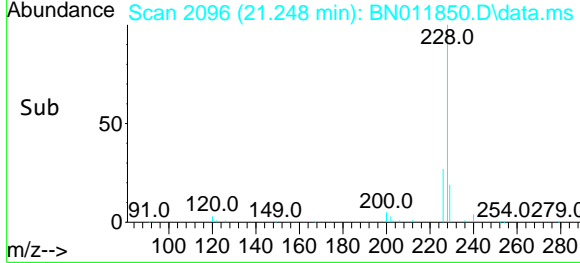
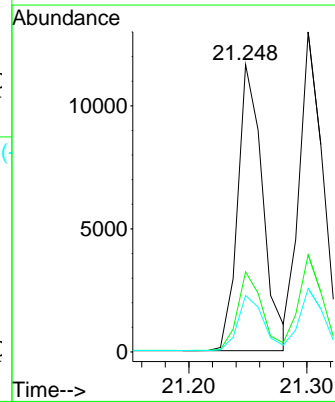
Tgt Ion	Resp	Lower	Upper
244	100		
212	9.3	7.3	10.9
122	14.6	7.8	11.6#

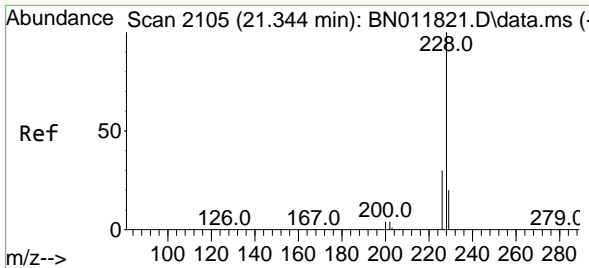


#32
 Benzo(a)anthracene
 Concen: 0.40 ng
 RT: 21.248 min Scan# 2096
 Delta R.T. 0.000 min
 Lab File: BN011850.D
 Acq: 22 Sep 2020 13:41



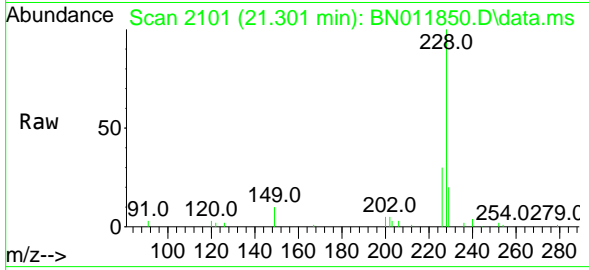
Tgt Ion	Resp	Lower	Upper
228	100		
226	27.9	21.0	31.4
229	19.6	16.0	24.0





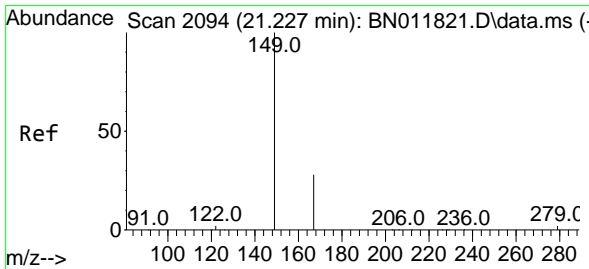
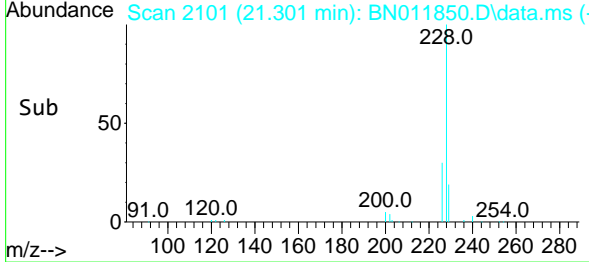
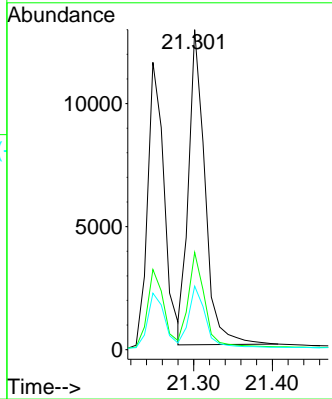
#33
 Chrysene
 Concen: 0.42 ng
 RT: 21.301 min Scan# 2101
 Delta R.T. 0.000 min
 Lab File: BN011850.D
 Acq: 22 Sep 2020 13:41

Instrument :
 BNA_N
ClientSampled :
 SSTDCCC0.4

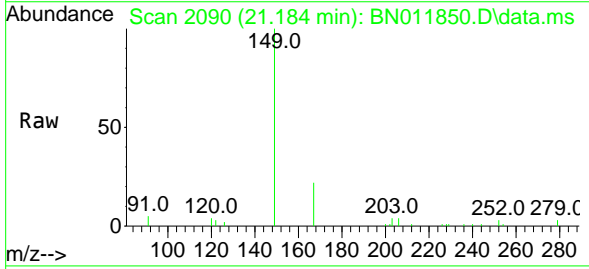


Tgt Ion: 228 Resp: 18550

Ion	Ratio	Lower	Upper
228	100		
226	30.4	23.3	34.9
229	19.9	15.8	23.8

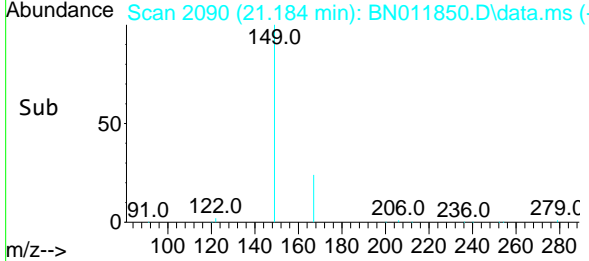
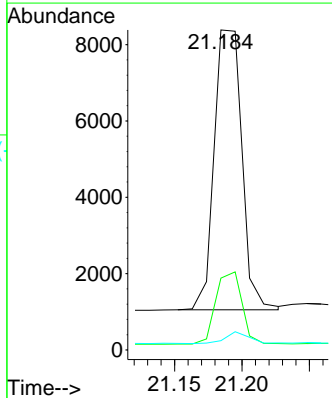


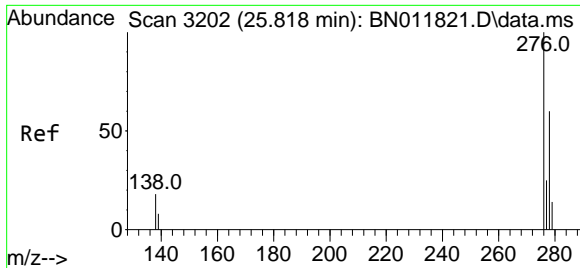
#34
 Bis(2-ethylhexyl)phthalate
 Concen: 0.47 ng
 RT: 21.184 min Scan# 2090
 Delta R.T. 0.000 min
 Lab File: BN011850.D
 Acq: 22 Sep 2020 13:41



Tgt Ion: 149 Resp: 10485

Ion	Ratio	Lower	Upper
149	100		
167	24.4	23.6	35.4
279	3.6	4.0	6.0#



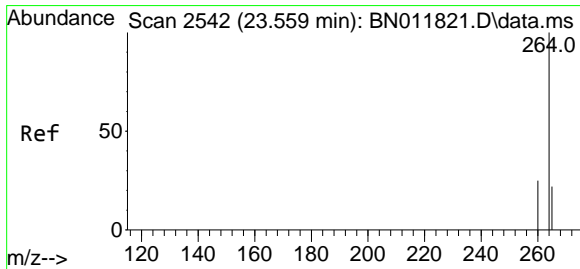
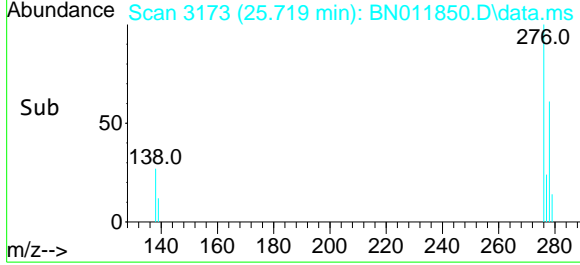
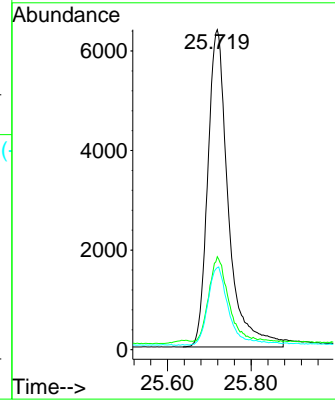
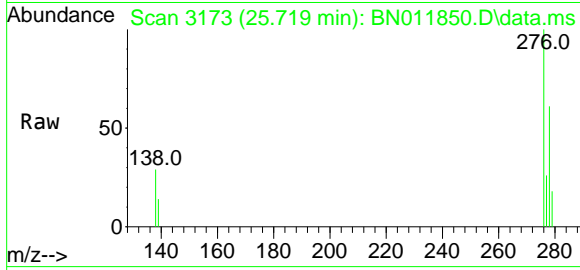


#35
 Indeno(1,2,3-cd)pyrene
 Concen: 0.39 ng
 RT: 25.719 min Scan# 3173
 Delta R.T. 0.000 min
 Lab File: BN011850.D
 Acq: 22 Sep 2020 13:41

Instrument :
 BNA_N
ClientSampleId :
 SSTDCCC0.4

Tgt Ion:276 Resp: 21721

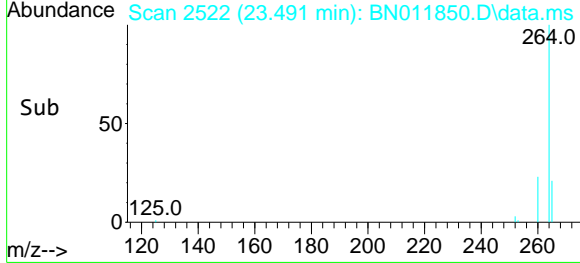
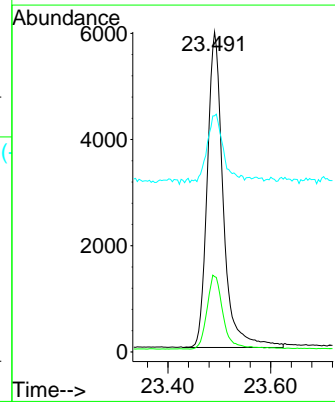
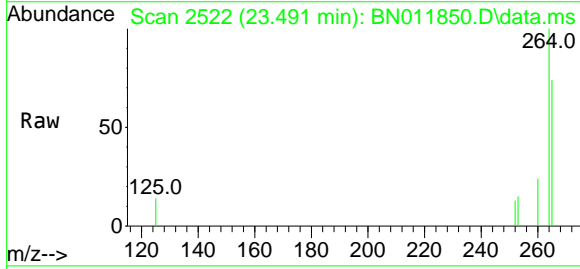
Ion	Ratio	Lower	Upper
276	100		
138	24.9	13.0	19.4#
277	24.2	20.0	30.0

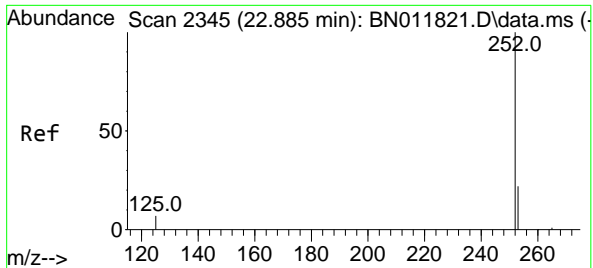


#36
 Perylene-d12
 Concen: 0.40 ng
 RT: 23.491 min Scan# 2522
 Delta R.T. 0.000 min
 Lab File: BN011850.D
 Acq: 22 Sep 2020 13:41

Tgt Ion:264 Resp: 12778

Ion	Ratio	Lower	Upper
264	100		
260	23.5	19.6	29.4
265	73.8	38.6	58.0#



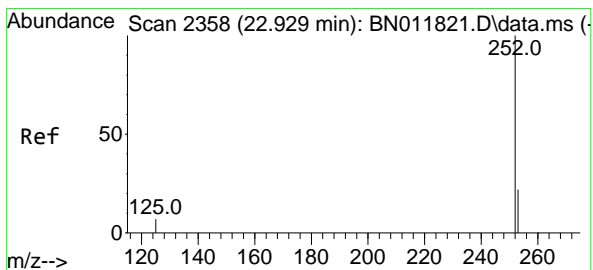
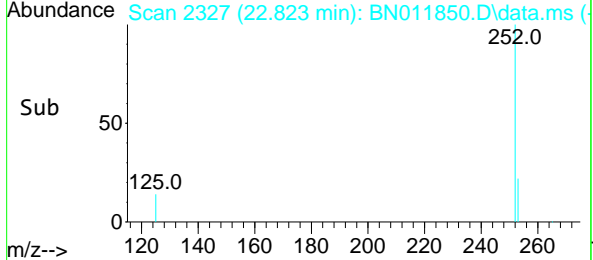
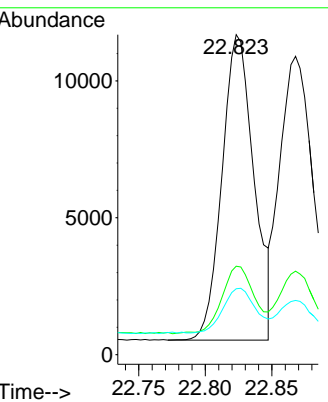
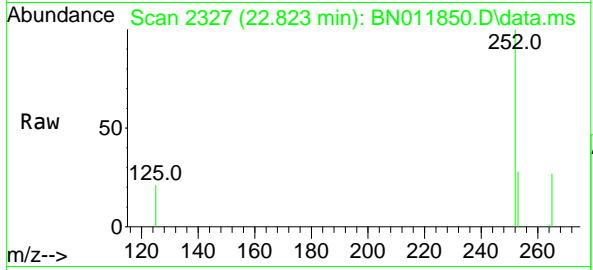


#37
 Benzo(b)fluoranthene
 Concen: 0.39 ng
 RT: 22.823 min Scan# 2327
 Delta R.T. 0.000 min
 Lab File: BN011850.D
 Acq: 22 Sep 2020 13:41

Instrument :
 BNA_N
ClientSampled :
 SSTDCCC0.4

Tgt Ion:252 Resp: 18618

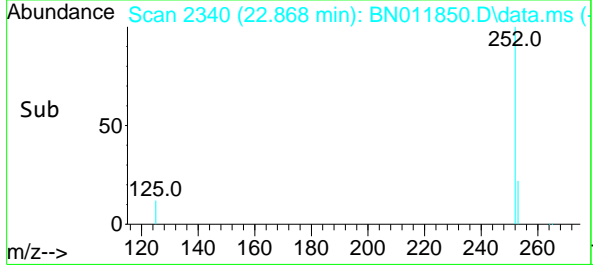
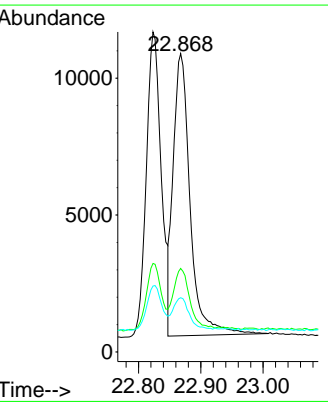
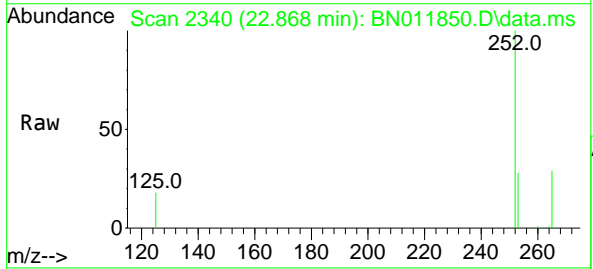
Ion	Ratio	Lower	Upper
252	100		
253	27.7	19.1	28.7
125	20.6	6.2	9.2#

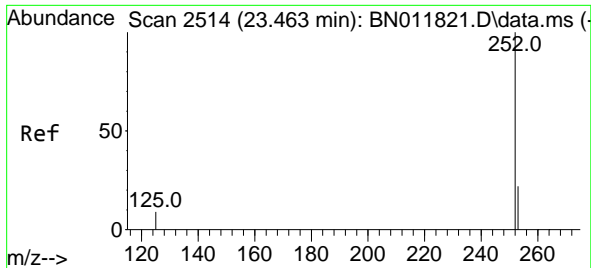


#38
 Benzo(k)fluoranthene
 Concen: 0.39 ng
 RT: 22.868 min Scan# 2340
 Delta R.T. 0.000 min
 Lab File: BN011850.D
 Acq: 22 Sep 2020 13:41

Tgt Ion:252 Resp: 19432

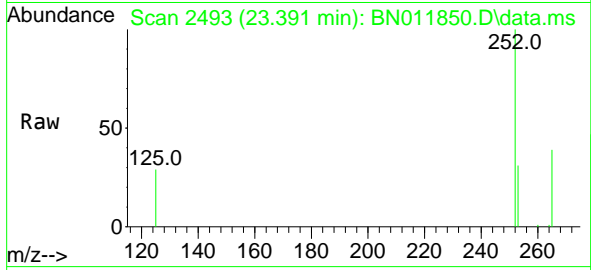
Ion	Ratio	Lower	Upper
252	100		
253	28.0	19.3	28.9
125	18.2	6.0	9.0#



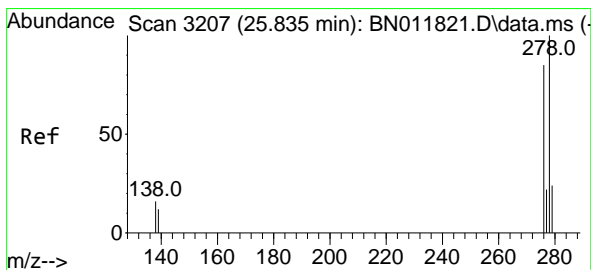
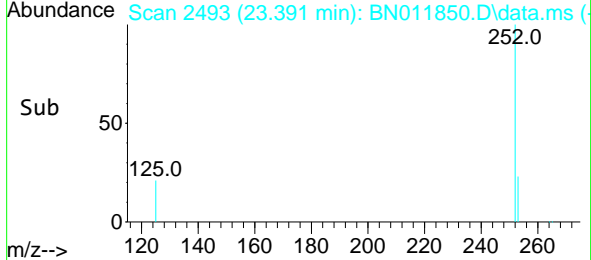
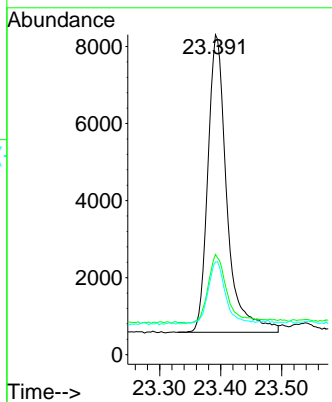


#39
 Benzo(a)pyrene
 Concen: 0.40 ng
 RT: 23.391 min Scan# 2493
 Delta R.T. 0.000 min
 Lab File: BN011850.D
 Acq: 22 Sep 2020 13:41

Instrument :
 BNA_N
 ClientSampled :
 SSTDCCC0.4

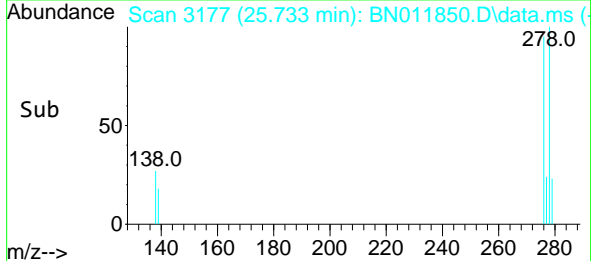
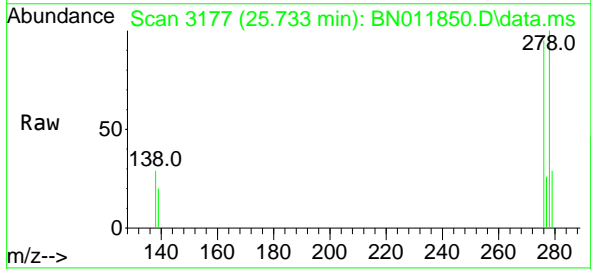
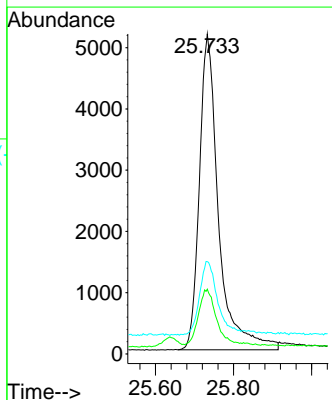


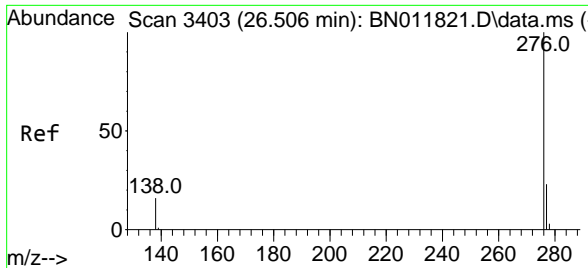
Tgt Ion:252 Resp: 16761
 Ion Ratio Lower Upper
 252 100
 253 31.4 19.8 29.6#
 125 29.0 7.3 10.9#



#40
 Dibenzo(a,h)anthracene
 Concen: 0.37 ng
 RT: 25.733 min Scan# 3177
 Delta R.T. 0.000 min
 Lab File: BN011850.D
 Acq: 22 Sep 2020 13:41

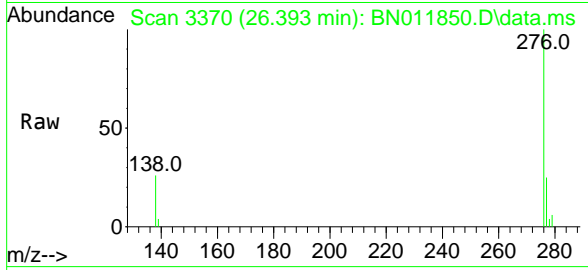
Tgt Ion:278 Resp: 17536
 Ion Ratio Lower Upper
 278 100
 139 20.3 8.6 13.0#
 279 28.8 19.8 29.8





#41
 Benzo(g,h,i)perylene
 Concen: 0.38 ng
 RT: 26.393 min Scan# 3370
 Delta R.T. 0.000 min
 Lab File: BN011850.D
 Acq: 22 Sep 2020 13:41

Instrument :
 BNA_N
ClientSampled :
 SSTDCCC0.4



Tgt Ion	Resp	Lower	Upper
276	19065		
276	100		
277	25.2	19.4	29.0
138	26.3	11.3	16.9#

