

Data Path : Z:\svoasrv\HPCHEM1\BNA\_N\Data\BN092320\  
 Data File : BN011886.D  
 Acq On : 23 Sep 2020 16:21  
 Operator : CG/JU  
 Sample : SSTDICC0.8  
 Misc :  
 ALS Vial : 6 Sample Multiplier: 1

Instrument :  
 BNA\_N  
 ClientSampled :  
 SSTDICC0.8

Quant Time: Sep 23 16:51:17 2020  
 Quant Method : Z:\svoasrv\HPCHEM1\BNA\_N\Methods\8270-SIM-BN092320.M  
 Quant Title : ASP BNA STANDARDS FOR 5 POINT CALIBRATION  
 QLast Update : Wed Sep 23 16:16:06 2020  
 Response via : Initial Calibration

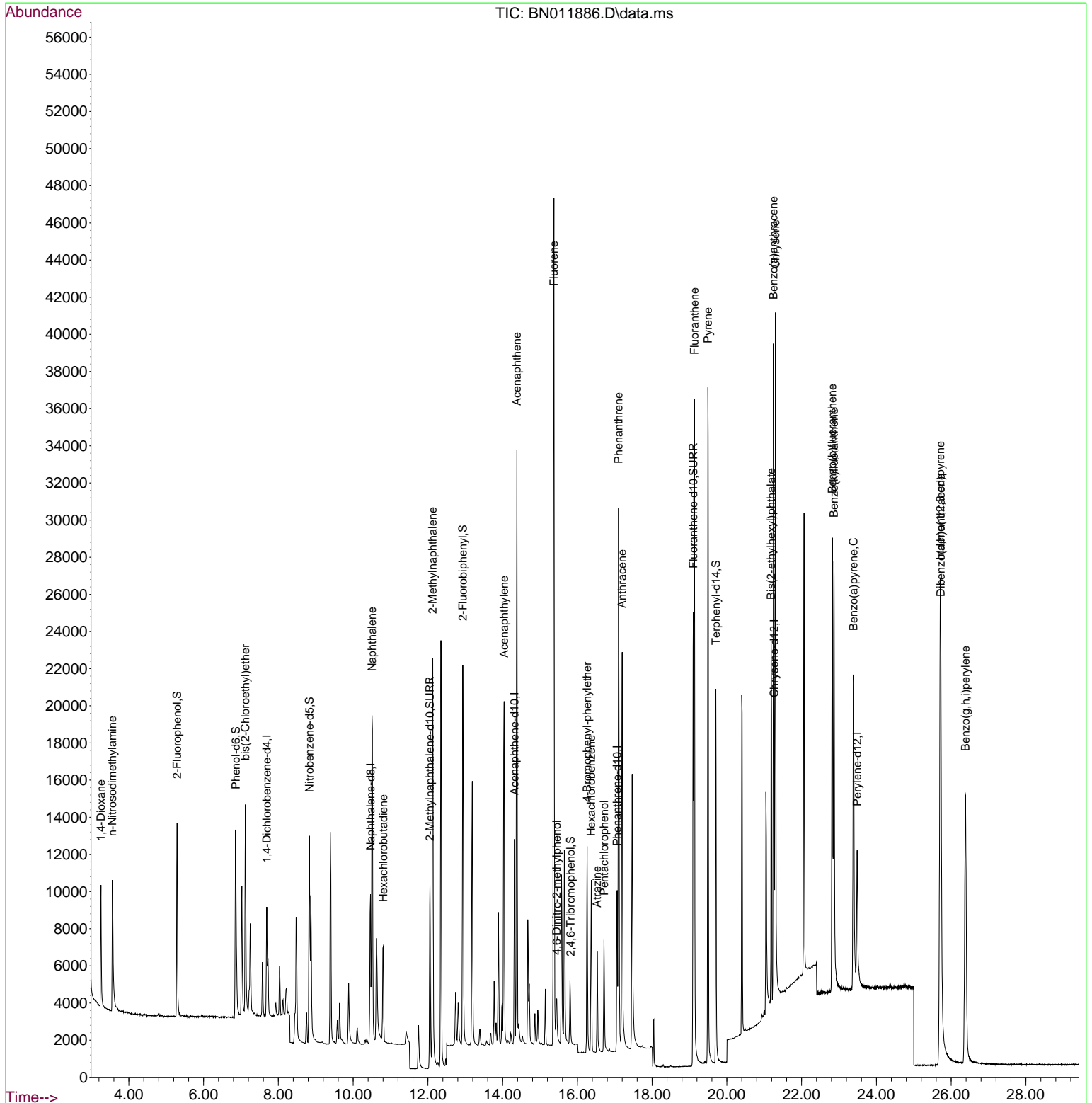
Compound	R.T.	QIon	Response	Conc Units	Dev(Min)	
Internal Standards						
1) 1,4-Dichlorobenzene-d4	7.691	152	2822	0.40 ng	0.00	
7) Naphthalene-d8	10.465	136	11794	0.40 ng	# 0.00	
13) Acenaphthene-d10	14.319	164	6063	0.40 ng	0.00	
19) Phenanthrene-d10	17.065	188	12263	0.40 ng	0.00	
29) Chrysene-d12	21.269	240	11228	0.40 ng	# 0.00	
36) Perylene-d12	23.487	264	10859	0.40 ng	# 0.00	
System Monitoring Compounds						
4) 2-Fluorophenol	5.291	112	7678	0.92 ng	0.00	
5) Phenol-d6	6.861	99	9739	0.95 ng	0.00	
8) Nitrobenzene-d5	8.831	82	9737	0.82 ng	0.00	
11) 2-Methylnaphthalene-d10	12.055	152	14957	0.71 ng	0.00	
14) 2,4,6-Tribromophenol	15.816	330	2285	0.74 ng	0.00	
15) 2-Fluorobiphenyl	12.936	172	18476	0.70 ng	0.00	
27) Fluoranthene-d10	19.102	212	28354	0.73 ng	0.00	
31) Terphenyl-d14	19.707	244	20804	0.81 ng	0.00	
Target Compounds						Qvalue
2) 1,4-Dioxane	3.253	88	3863	0.92 ng		96
3) n-Nitrosodimethylamine	3.559	42	5567	0.99 ng	#	89
6) bis(2-Chloroethyl)ether	7.119	93	8900	0.99 ng		94
9) Naphthalene	10.503	128	26585	0.80 ng		99
10) Hexachlorobutadiene	10.808	225	4340	0.57 ng	#	99
12) 2-Methylnaphthalene	12.131	142	17072	0.74 ng		99
16) Acenaphthylene	14.040	152	22800	0.78 ng		100
17) Acenaphthene	14.382	154	15642	0.77 ng		90
18) Fluorene	15.372	166	19541	0.77 ng		99
20) 4,6-Dinitro-2-methylph...	15.448	198	1940	0.92 ng	#	70
21) 4-Bromophenyl-phenylether	16.262	248	5226	0.72 ng	#	75
22) Hexachlorobenzene	16.372	284	6065	0.67 ng	#	83
23) Atrazine	16.530	200	4832	0.74 ng	#	92
24) Pentachlorophenol	16.712	266	2879	0.79 ng		97
25) Phenanthrene	17.102	178	30305	0.78 ng		99
26) Anthracene	17.199	178	26307	0.78 ng		99
28) Fluoranthene	19.132	202	33257	0.73 ng	#	95
30) Pyrene	19.494	202	33551	0.86 ng		99
32) Benzo(a)anthracene	21.248	228	29612	0.78 ng		99
33) Chrysene	21.301	228	30685	0.79 ng		99
34) Bis(2-ethylhexyl)phtha...	21.184	149	19207	0.98 ng	#	91
35) Indeno(1,2,3-cd)pyrene	25.709	276	35159	0.72 ng	#	89
37) Benzo(b)fluoranthene	22.820	252	30515	0.75 ng	#	93
38) Benzo(k)fluoranthene	22.864	252	32776	0.78 ng	#	93
39) Benzo(a)pyrene	23.388	252	27550	0.76 ng	#	91
40) Dibenzo(a,h)anthracene	25.726	278	28543	0.72 ng	#	92
41) Benzo(g,h,i)perylene	26.386	276	30097	0.71 ng	#	90

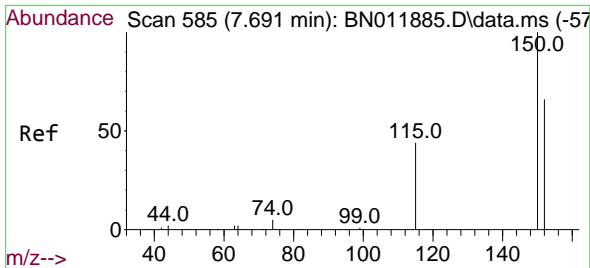
(#) = qualifier out of range (m) = manual integration (+) = signals summed

Data Path : Z:\svoasrv\HPCHEM1\BNA\_N\Data\BN092320\  
 Data File : BN011886.D  
 Acq On : 23 Sep 2020 16:21  
 Operator : CG/JU  
 Sample : SSTDICC0.8  
 Misc :  
 ALS Vial : 6 Sample Multiplier: 1

**Instrument :**  
 BNA\_N  
**ClientSampleId :**  
 SSTDICC0.8

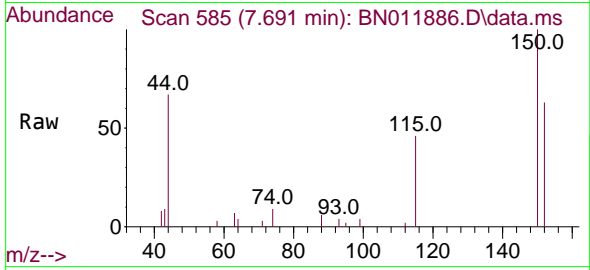
Quant Time: Sep 23 16:51:17 2020  
 Quant Method : Z:\svoasrv\HPCHEM1\BNA\_N\Methods\8270-SIM-BN092320.M  
 Quant Title : ASP BNA STANDARDS FOR 5 POINT CALIBRATION  
 QLast Update : Wed Sep 23 16:16:06 2020  
 Response via : Initial Calibration



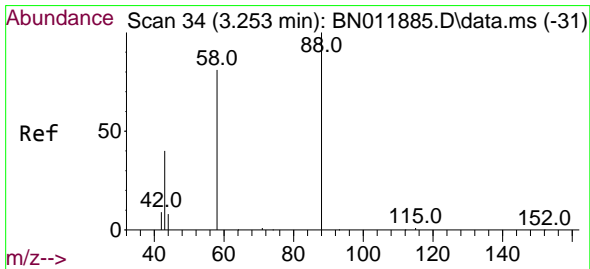
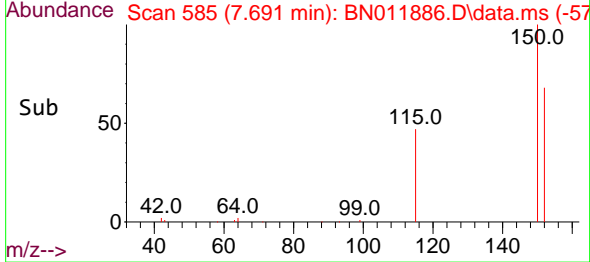
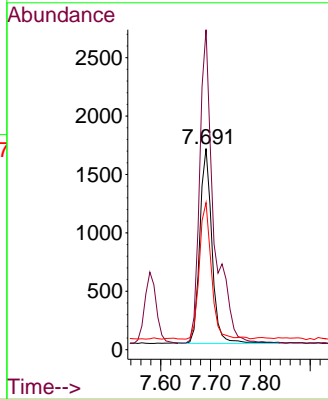


#1  
 1,4-Dichlorobenzene-d4  
 Concen: 0.40 ng  
 RT: 7.691 min Scan# 585  
 Delta R.T. -0.000 min  
 Lab File: BN011886.D  
 Acq: 23 Sep 2020 16:21

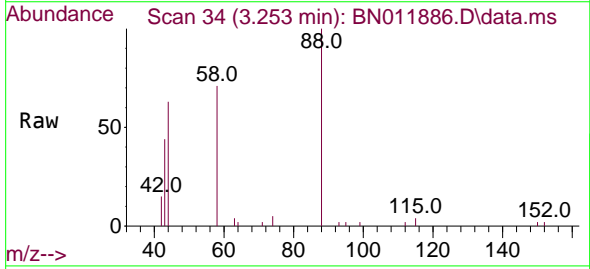
Instrument :  
 BNA\_N  
 ClientSampled :  
 SSTDICC0.8



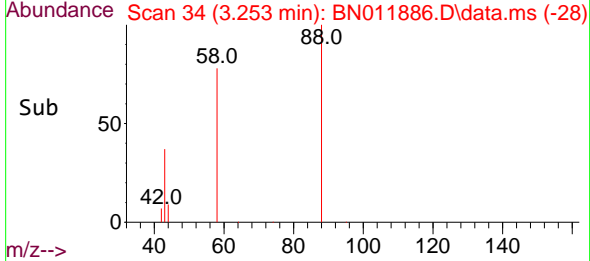
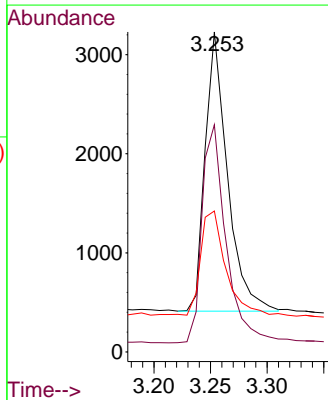
Tgt Ion:152 Resp: 2822  
 Ion Ratio Lower Upper  
 152 100  
 150 159.1 118.3 177.5  
 115 73.1 51.3 76.9

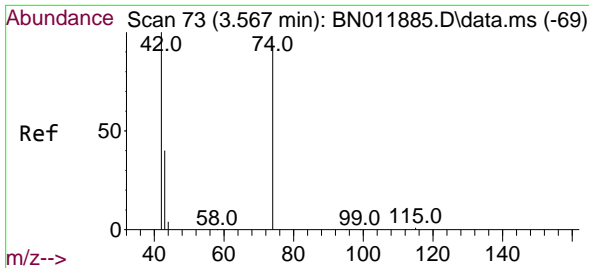


#2  
 1,4-Dioxane  
 Concen: 0.92 ng  
 RT: 3.253 min Scan# 34  
 Delta R.T. 0.000 min  
 Lab File: BN011886.D  
 Acq: 23 Sep 2020 16:21



Tgt Ion: 88 Resp: 3863  
 Ion Ratio Lower Upper  
 88 100  
 58 84.2 63.3 94.9  
 43 41.7 33.0 49.4

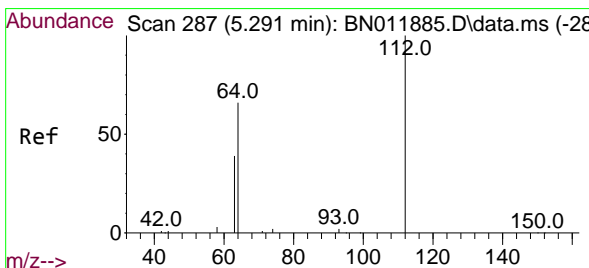
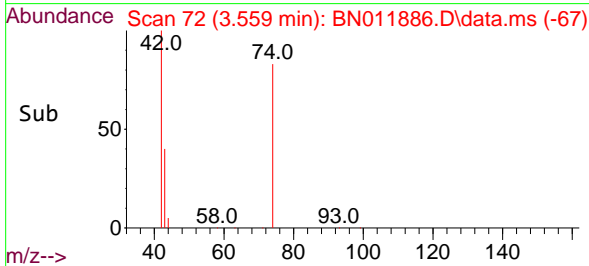
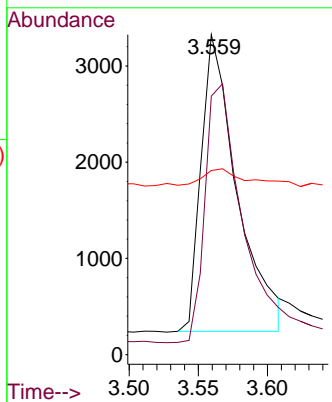
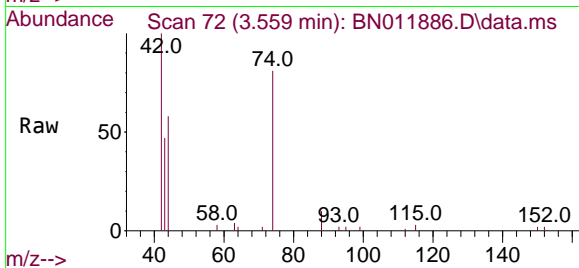




#3  
 n-Nitrosodimethylamine  
 Concen: 0.99 ng  
 RT: 3.559 min Scan# 72  
 Delta R.T. -0.008 min  
 Lab File: BN011886.D  
 Acq: 23 Sep 2020 16:21

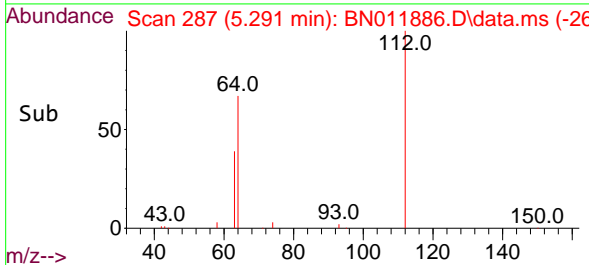
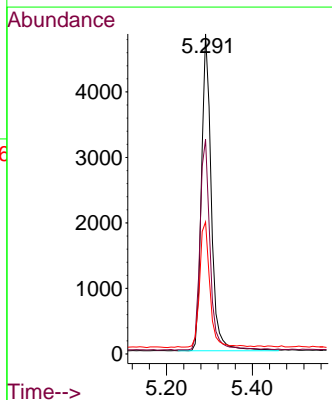
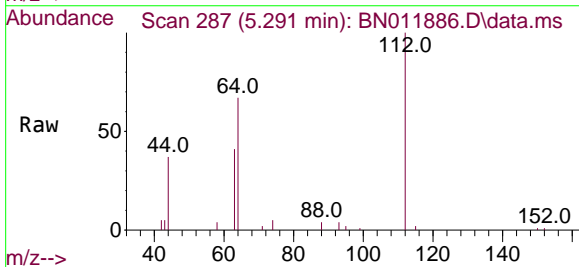
Instrument :  
 BNA\_N  
 ClientSampled :  
 SSTDICC0.8

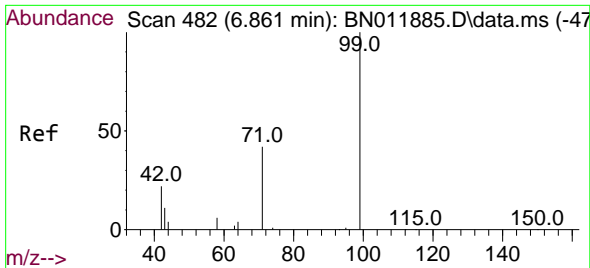
Tgt Ion: 42 Resp: 5567  
 Ion Ratio Lower Upper  
 42 100  
 74 90.7 64.4 96.6  
 44 6.0 6.7 10.1#



#4  
 2-Fluorophenol  
 Concen: 0.92 ng  
 RT: 5.291 min Scan# 287  
 Delta R.T. 0.000 min  
 Lab File: BN011886.D  
 Acq: 23 Sep 2020 16:21

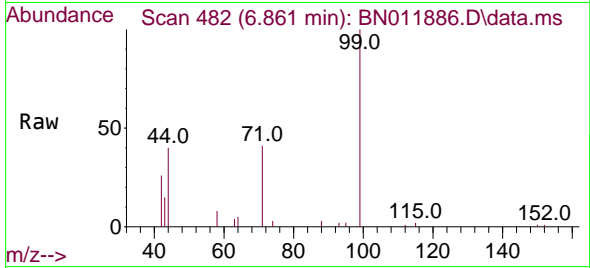
Tgt Ion: 112 Resp: 7678  
 Ion Ratio Lower Upper  
 112 100  
 64 68.9 49.0 73.6  
 63 40.8 31.8 47.6





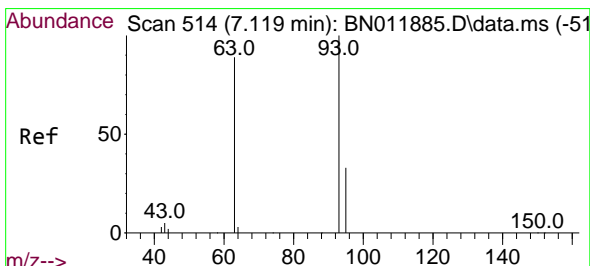
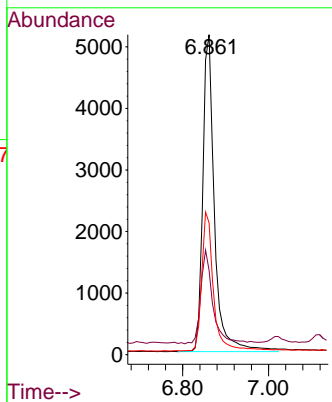
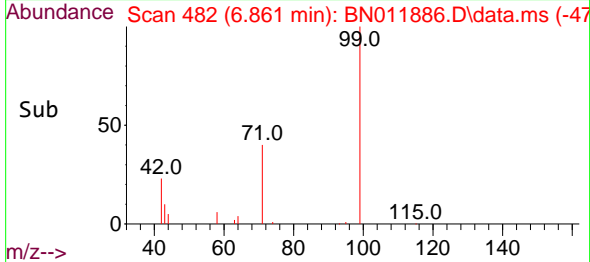
#5  
 Phenol-d6  
 Concen: 0.95 ng  
 RT: 6.861 min Scan# 482  
 Delta R.T. 0.000 min  
 Lab File: BN011886.D  
 Acq: 23 Sep 2020 16:21

Instrument :  
 BNA\_N  
 ClientSampleId :  
 SSTDICC0.8

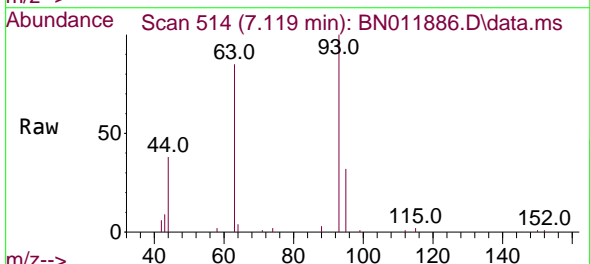


Tgt Ion: 99 Resp: 9739

Ion	Ratio	Lower	Upper
99	100		
42	30.8	23.4	35.0
71	43.8	38.1	57.1

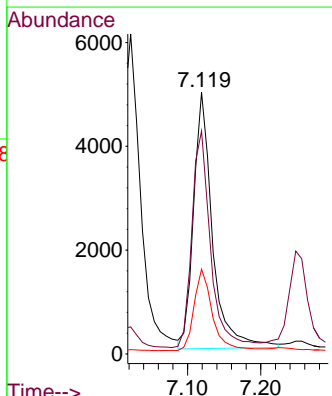
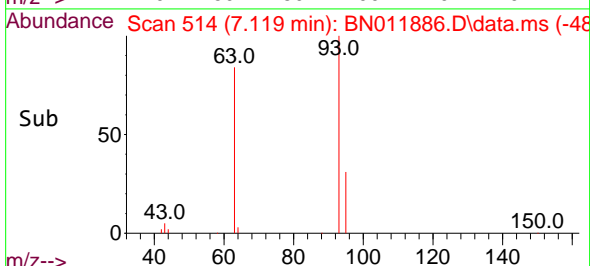


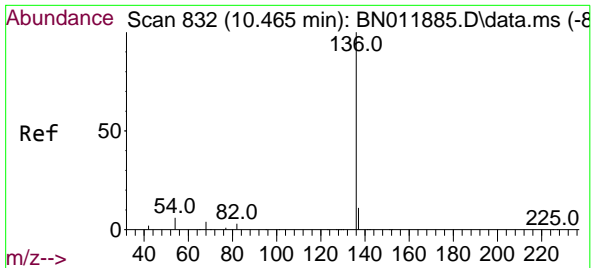
#6  
 bis(2-Chloroethyl)ether  
 Concen: 0.99 ng  
 RT: 7.119 min Scan# 514  
 Delta R.T. 0.000 min  
 Lab File: BN011886.D  
 Acq: 23 Sep 2020 16:21



Tgt Ion: 93 Resp: 8900

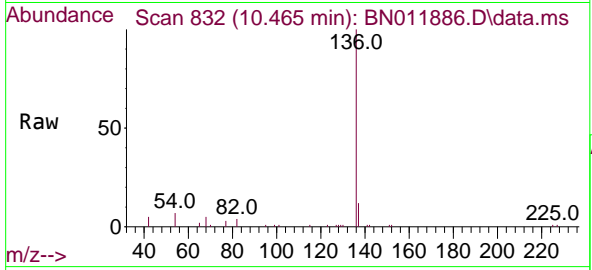
Ion	Ratio	Lower	Upper
93	100		
63	83.3	61.1	91.7
95	30.7	25.5	38.3





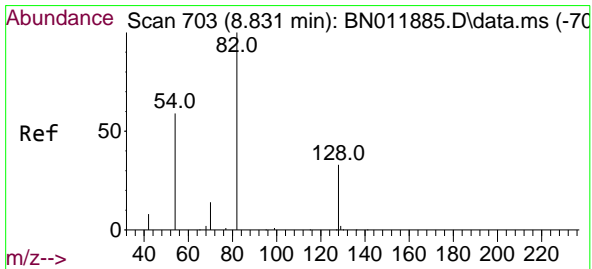
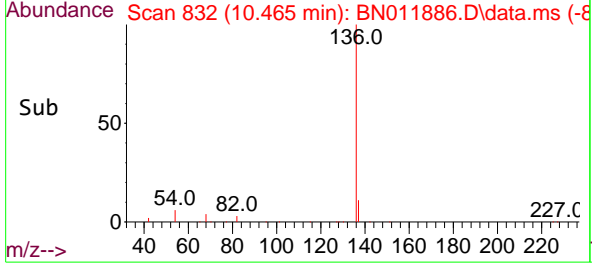
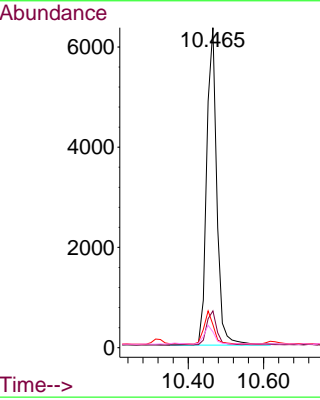
#7  
 Naphthalene-d8  
 Concen: 0.40 ng  
 RT: 10.465 min Scan# 832  
 Delta R.T. 0.000 min  
 Lab File: BN011886.D  
 Acq: 23 Sep 2020 16:21

Instrument :  
 BNA\_N  
 ClientSampleId :  
 SSTDICC0.8

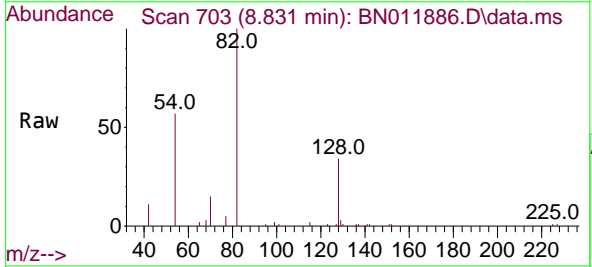


Tgt Ion: 136 Resp: 11794

Ion	Ratio	Lower	Upper
136	100		
137	11.5	9.5	14.3
54	7.2	5.6	8.4
68	4.9	3.2	4.8#

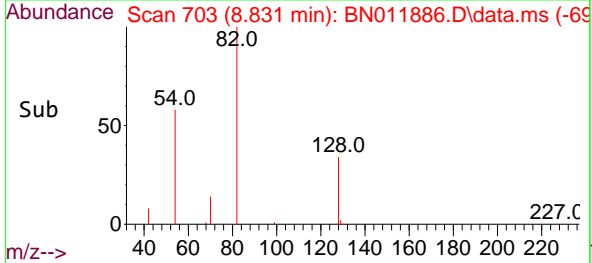
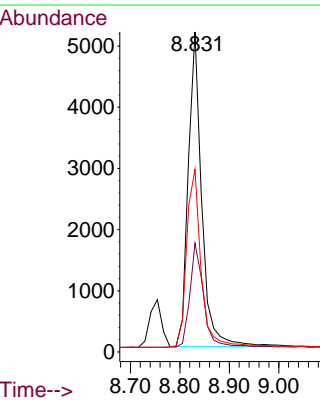


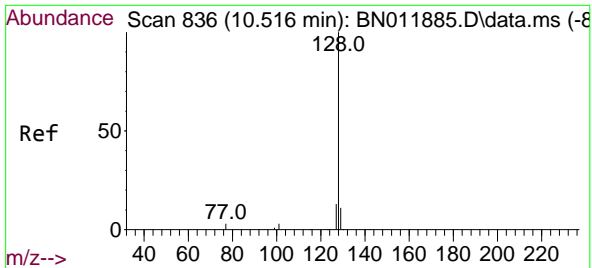
#8  
 Nitrobenzene-d5  
 Concen: 0.82 ng  
 RT: 8.831 min Scan# 703  
 Delta R.T. 0.000 min  
 Lab File: BN011886.D  
 Acq: 23 Sep 2020 16:21



Tgt Ion: 82 Resp: 9737

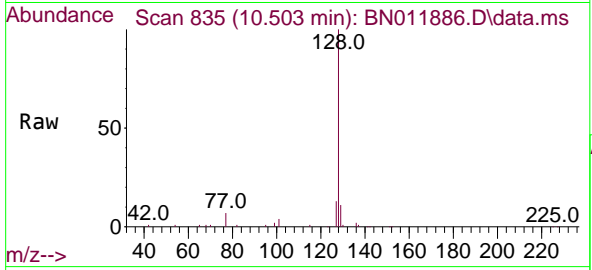
Ion	Ratio	Lower	Upper
82	100		
128	34.0	34.2	51.2#
54	57.1	43.1	64.7





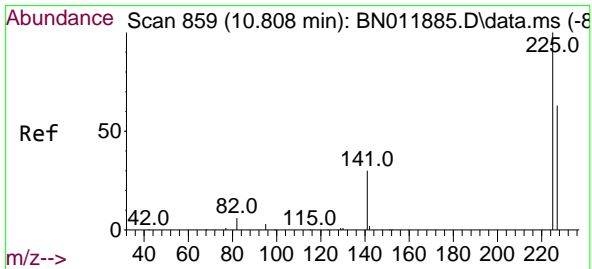
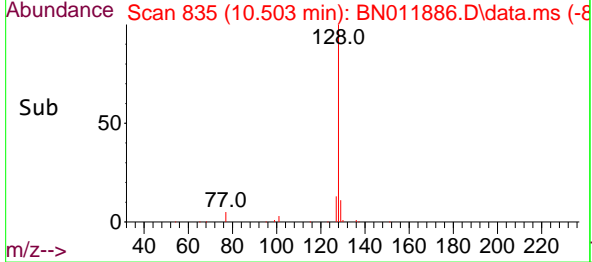
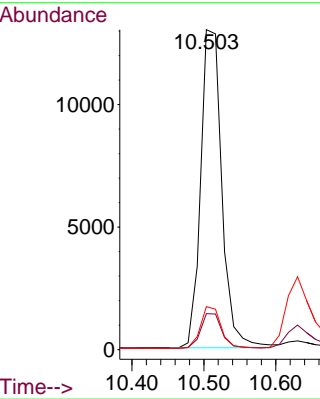
#9  
 Naphthalene  
 Concen: 0.80 ng  
 RT: 10.503 min Scan# 835  
 Delta R.T. -0.013 min  
 Lab File: BN011886.D  
 Acq: 23 Sep 2020 16:21

Instrument :  
 BNA\_N  
 ClientSampled :  
 SSTDICC0.8

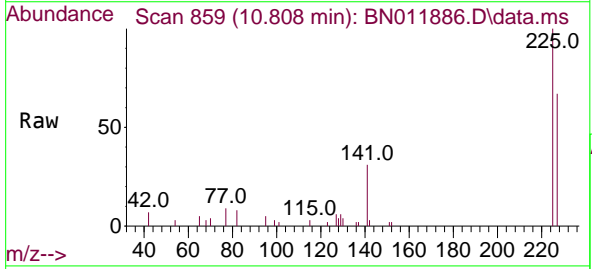


Tgt Ion:128 Resp: 26585

Ion	Ratio	Lower	Upper
128	100		
129	11.2	9.7	14.5
127	13.4	11.0	16.4

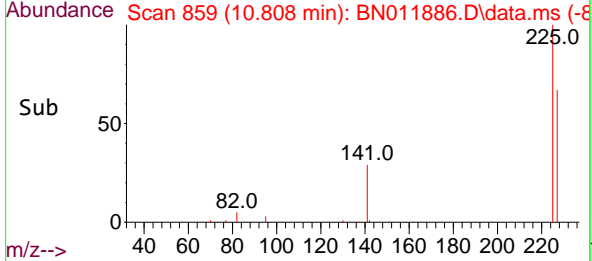
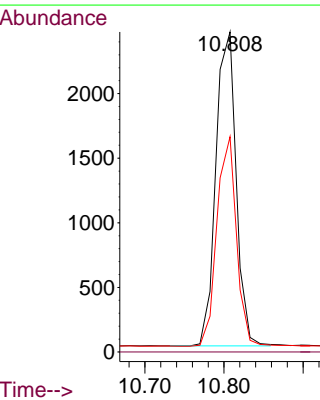


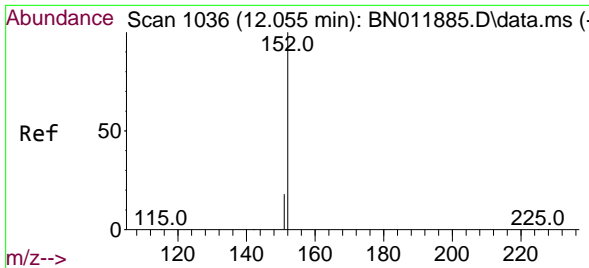
#10  
 Hexachlorobutadiene  
 Concen: 0.57 ng  
 RT: 10.808 min Scan# 859  
 Delta R.T. 0.000 min  
 Lab File: BN011886.D  
 Acq: 23 Sep 2020 16:21



Tgt Ion:225 Resp: 4340

Ion	Ratio	Lower	Upper
225	100		
223	0.0	0.0	0.0
227	64.3	51.9	77.9

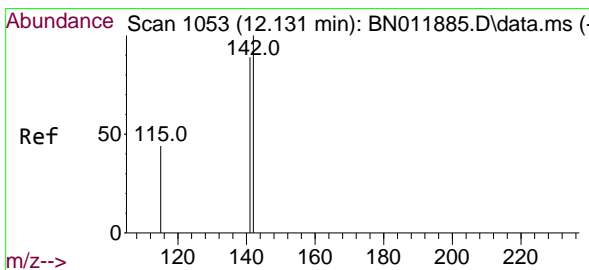
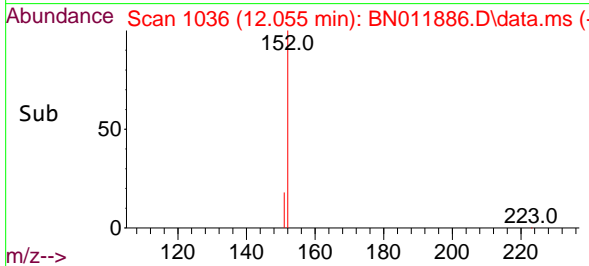
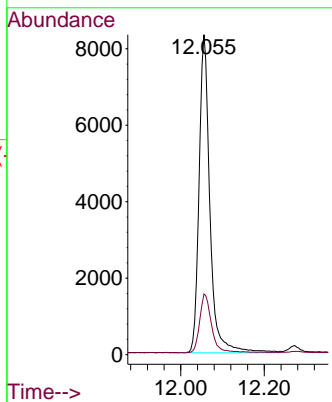
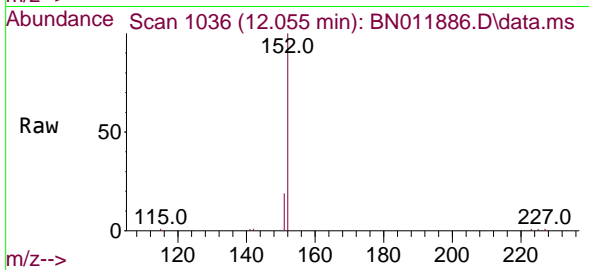




#11  
 2-Methylnaphthalene-d10  
 Concen: 0.71 ng  
 RT: 12.055 min Scan# 1036  
 Delta R.T. 0.000 min  
 Lab File: BN011886.D  
 Acq: 23 Sep 2020 16:21

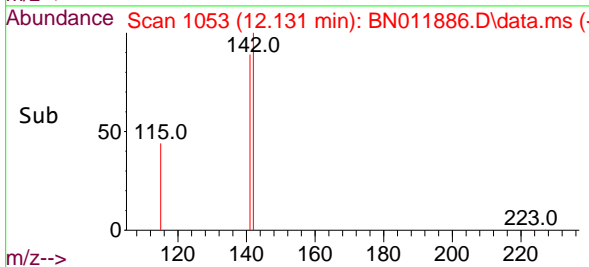
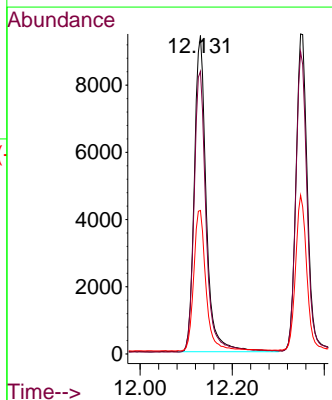
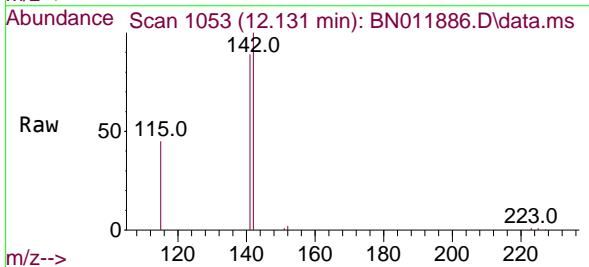
Instrument :  
 BNA\_N  
 ClientSampleID :  
 SSTDICC0.8

Tgt Ion:152 Resp: 14957  
 Ion Ratio Lower Upper  
 152 100  
 151 20.0 16.7 25.1

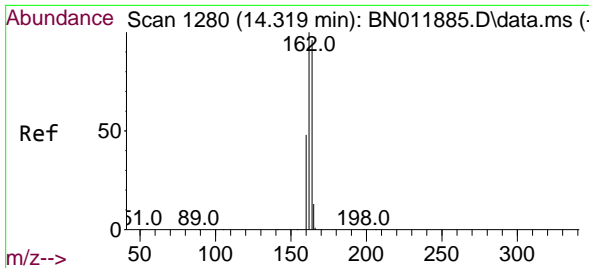


#12  
 2-Methylnaphthalene  
 Concen: 0.74 ng  
 RT: 12.131 min Scan# 1053  
 Delta R.T. 0.000 min  
 Lab File: BN011886.D  
 Acq: 23 Sep 2020 16:21

Tgt Ion:142 Resp: 17072  
 Ion Ratio Lower Upper  
 142 100  
 141 88.7 70.0 105.0  
 115 45.1 35.8 53.6

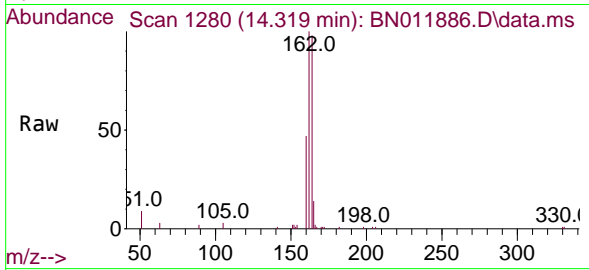




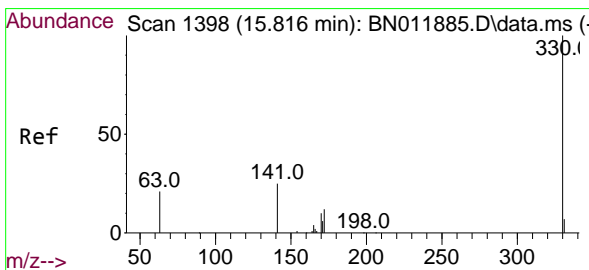
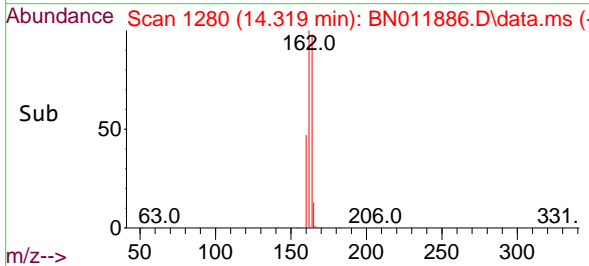
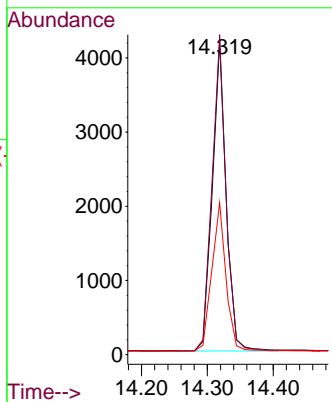


#13  
 Acenaphthene-d10  
 Concen: 0.40 ng  
 RT: 14.319 min Scan# 1280  
 Delta R.T. 0.000 min  
 Lab File: BN011886.D  
 Acq: 23 Sep 2020 16:21

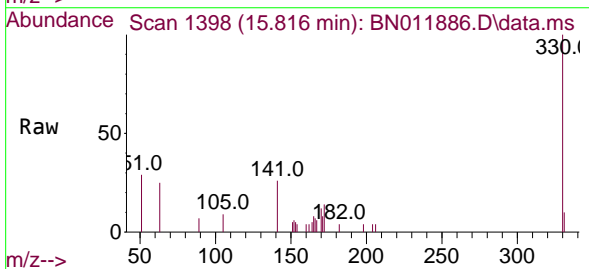
Instrument :  
 BNA\_N  
 ClientSampled :  
 SSTDICC0.8



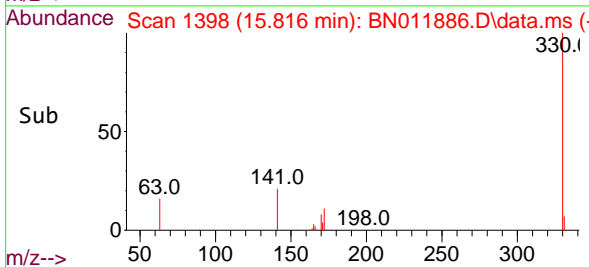
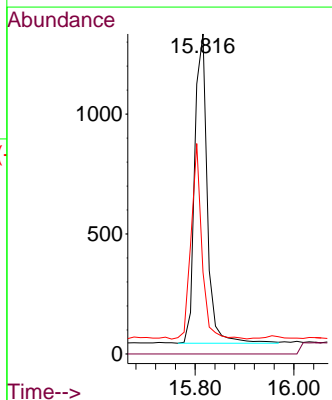
Tgt Ion:164 Resp: 6063  
 Ion Ratio Lower Upper  
 164 100  
 162 102.1 83.6 125.4  
 160 48.5 41.2 61.8

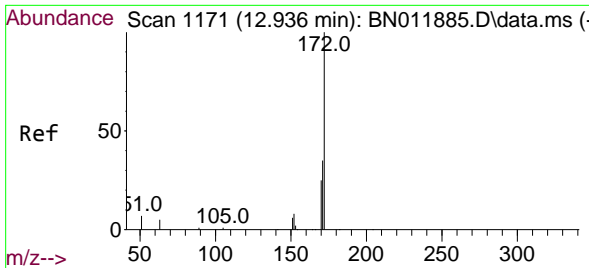


#14  
 2,4,6-Tribromophenol  
 Concen: 0.74 ng  
 RT: 15.816 min Scan# 1398  
 Delta R.T. 0.000 min  
 Lab File: BN011886.D  
 Acq: 23 Sep 2020 16:21



Tgt Ion:330 Resp: 2285  
 Ion Ratio Lower Upper  
 330 100  
 332 0.0 0.0 0.0  
 141 54.4 33.7 50.5#

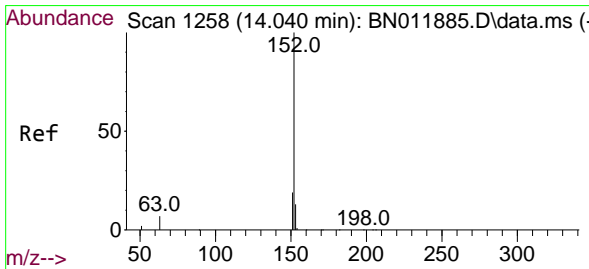
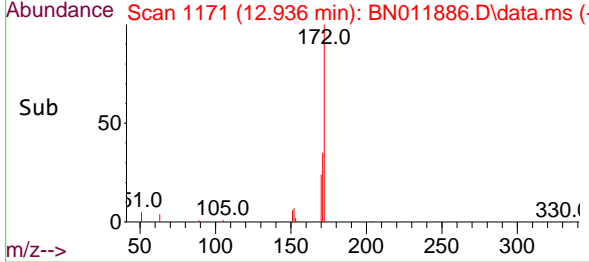
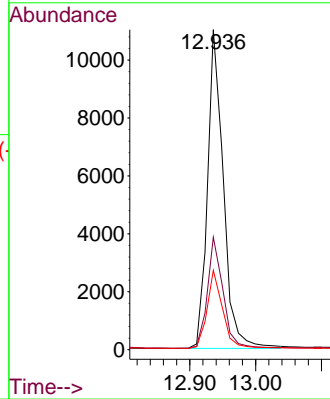
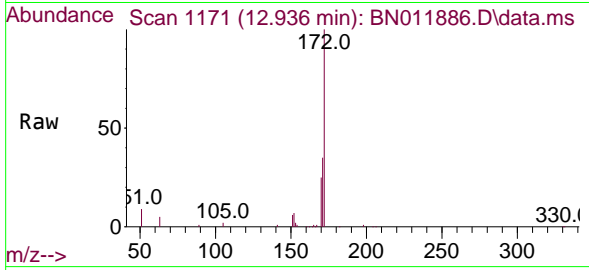




#15  
 2-Fluorobiphenyl  
 Concen: 0.70 ng  
 RT: 12.936 min Scan# 1171  
 Delta R.T. 0.000 min  
 Lab File: BN011886.D  
 Acq: 23 Sep 2020 16:21

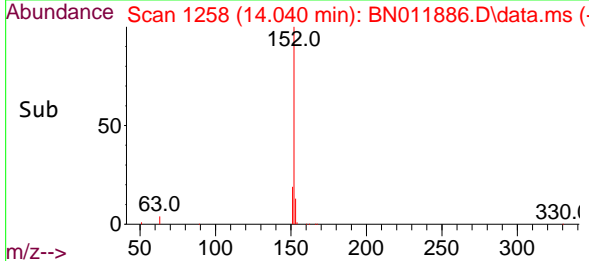
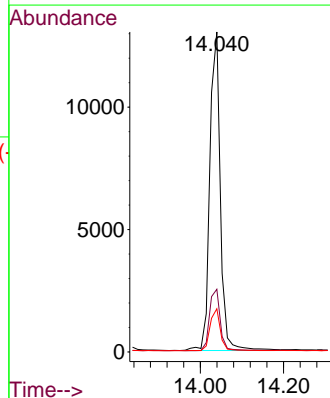
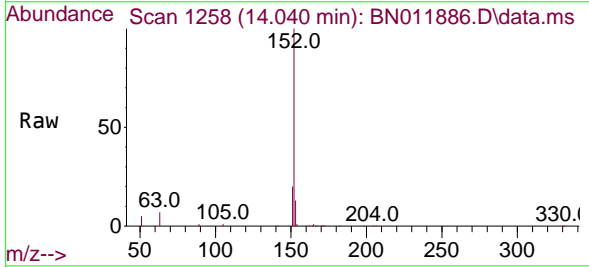
Instrument :  
 BNA\_N  
 ClientSampled :  
 SSTDICC0.8

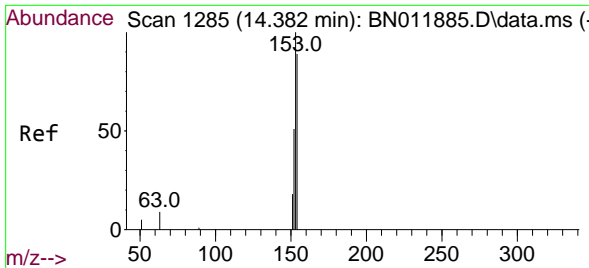
Tgt Ion	Resp	Lower	Upper
172	18476		
171	35.1	27.4	41.2
170	24.8	17.8	26.6



#16  
 Acenaphthylene  
 Concen: 0.78 ng  
 RT: 14.040 min Scan# 1258  
 Delta R.T. 0.000 min  
 Lab File: BN011886.D  
 Acq: 23 Sep 2020 16:21

Tgt Ion	Resp	Lower	Upper
152	22800		
151	19.6	15.9	23.9
153	13.0	10.5	15.7

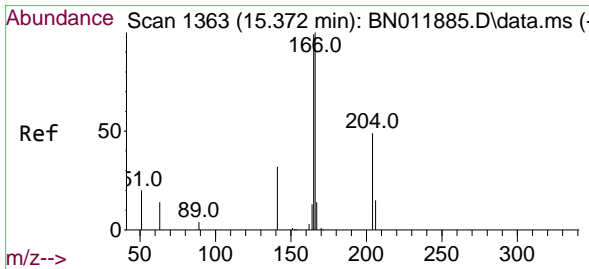
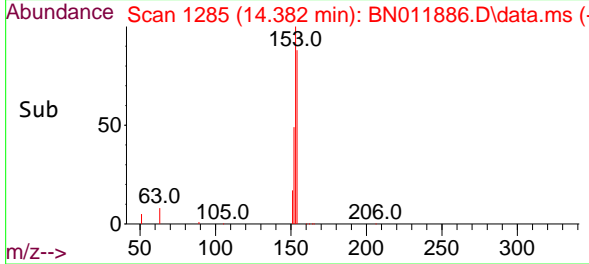
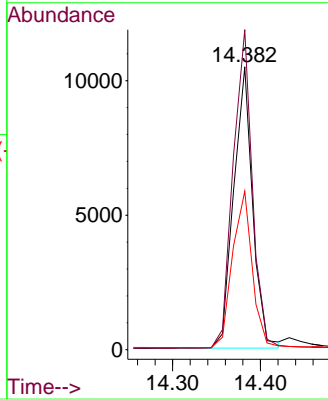
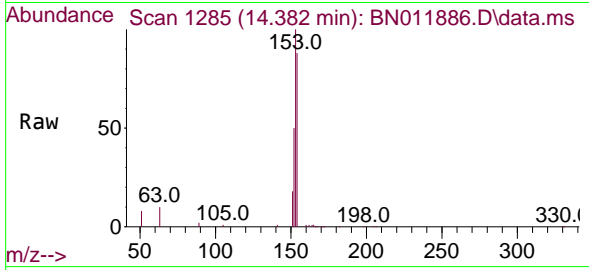




#17  
 Acenaphthene  
 Concen: 0.77 ng  
 RT: 14.382 min Scan# 1285  
 Delta R.T. 0.000 min  
 Lab File: BN011886.D  
 Acq: 23 Sep 2020 16:21

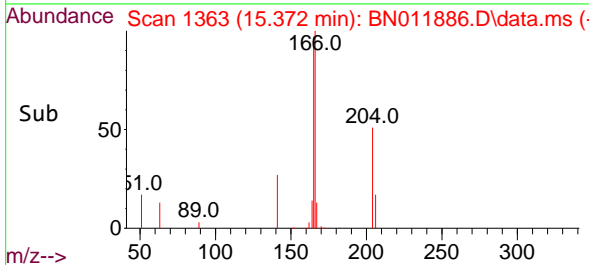
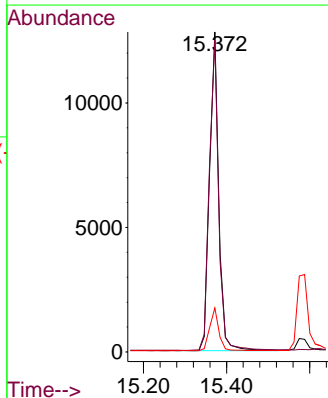
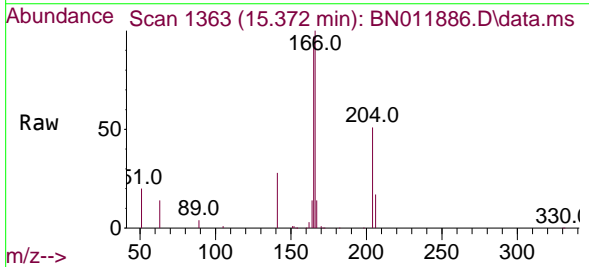
Instrument :  
 BNA\_N  
 ClientSampleId :  
 SSTDICC0.8

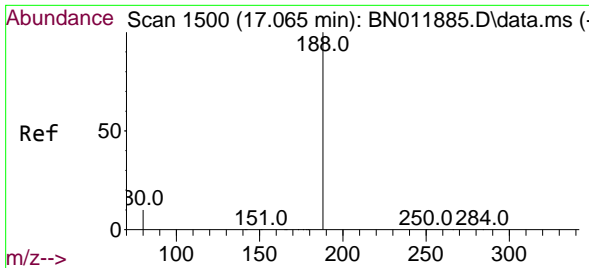
Tgt Ion	Resp	Lower	Upper
154	15642		
153	116.1	83.4	125.2
152	58.6	42.8	64.2



#18  
 Fluorene  
 Concen: 0.77 ng  
 RT: 15.372 min Scan# 1363  
 Delta R.T. 0.000 min  
 Lab File: BN011886.D  
 Acq: 23 Sep 2020 16:21

Tgt Ion	Resp	Lower	Upper
166	19541		
165	99.0	78.8	118.2
167	13.4	11.2	16.8

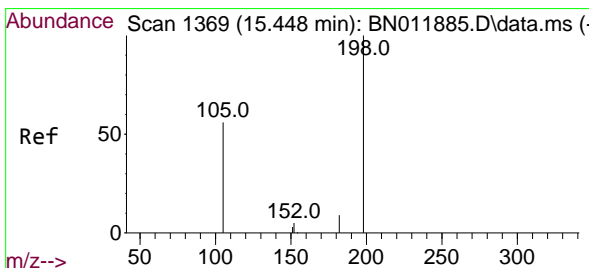
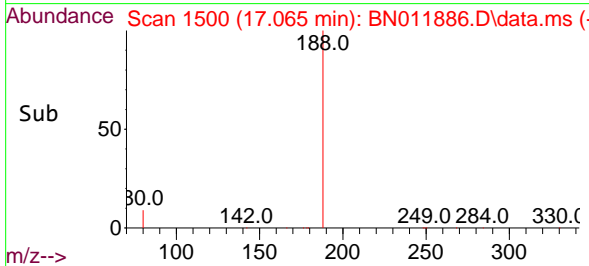
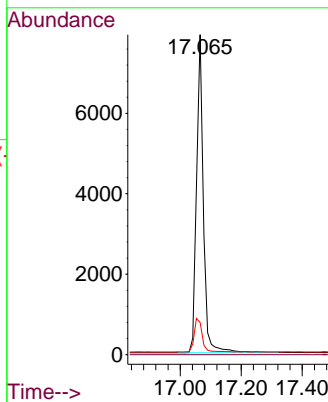
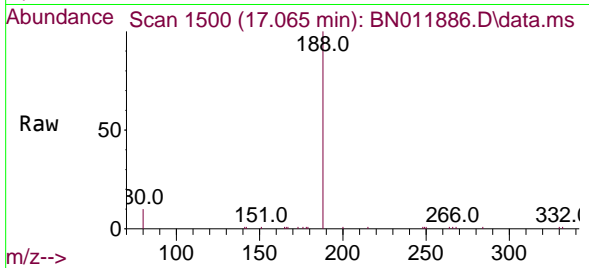




#19  
 Phenanthrene-d10  
 Concen: 0.40 ng  
 RT: 17.065 min Scan# 1500  
 Delta R.T. 0.000 min  
 Lab File: BN011886.D  
 Acq: 23 Sep 2020 16:21

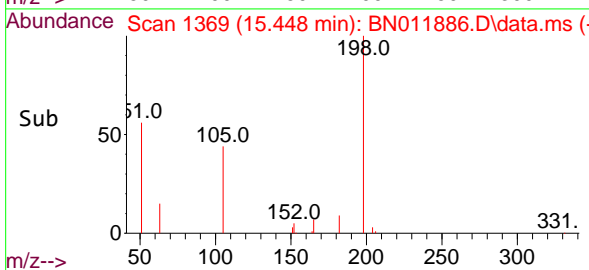
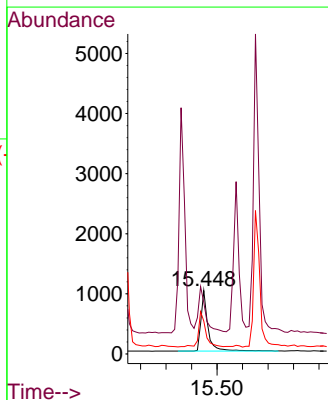
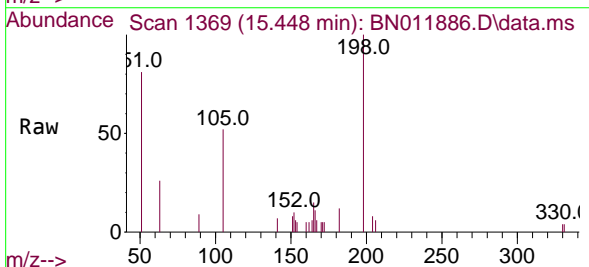
Instrument :  
 BNA\_N  
 ClientSampleId :  
 SSTDICC0.8

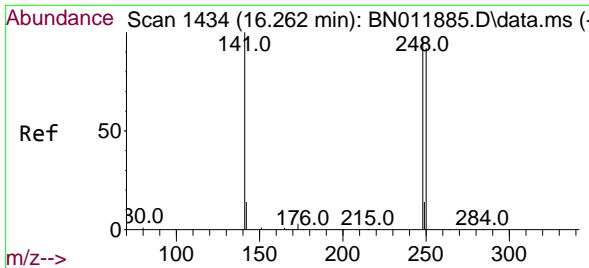
Tgt Ion:188 Resp: 12263  
 Ion Ratio Lower Upper  
 188 100  
 94 0.0 0.0 0.0  
 80 10.1 7.7 11.5



#20  
 4,6-Dinitro-2-methylphenol  
 Concen: 0.92 ng  
 RT: 15.448 min Scan# 1369  
 Delta R.T. 0.000 min  
 Lab File: BN011886.D  
 Acq: 23 Sep 2020 16:21

Tgt Ion:198 Resp: 1940  
 Ion Ratio Lower Upper  
 198 100  
 51 81.2 45.0 67.4#  
 105 51.7 30.4 45.6#

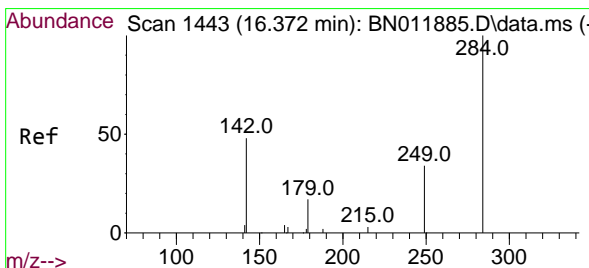
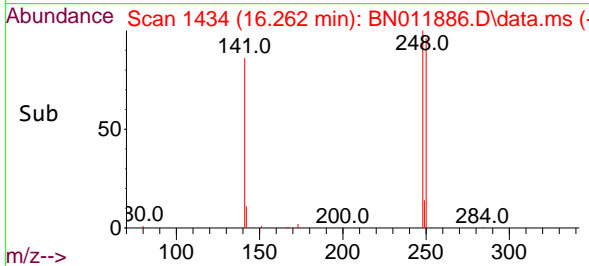
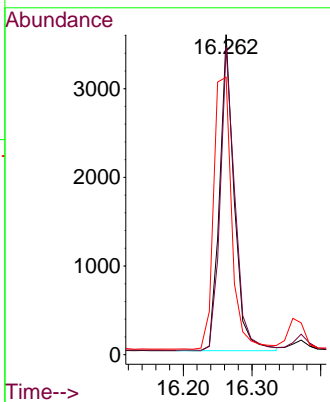
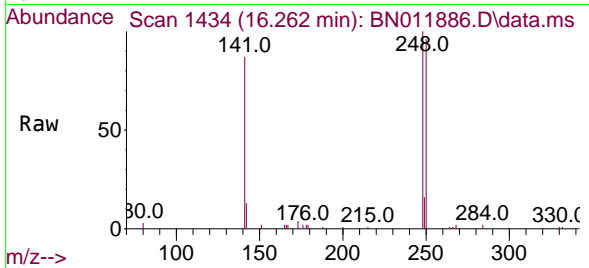




#21  
 4-Bromophenyl-phenylether  
 Concen: 0.72 ng  
 RT: 16.262 min Scan# 1434  
 Delta R.T. 0.000 min  
 Lab File: BN011886.D  
 Acq: 23 Sep 2020 16:21

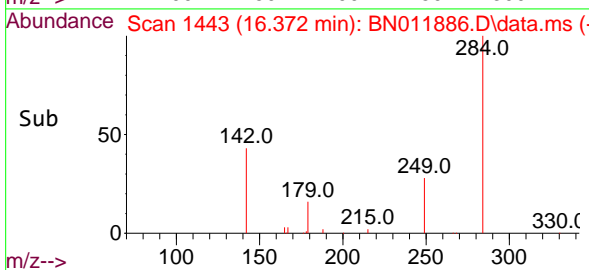
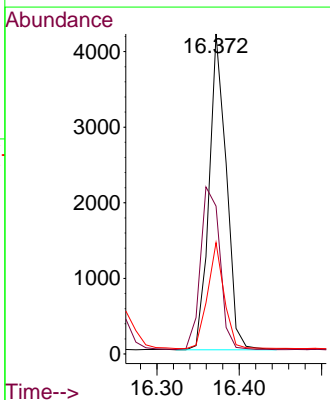
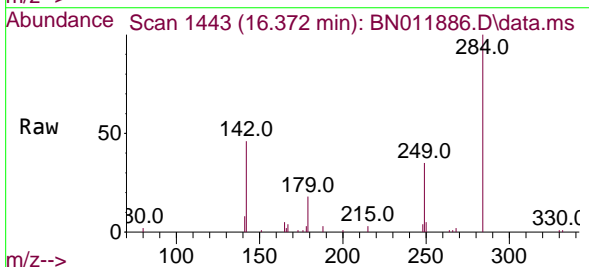
Instrument :  
 BNA\_N  
 ClientSampled :  
 SSTDICC0.8

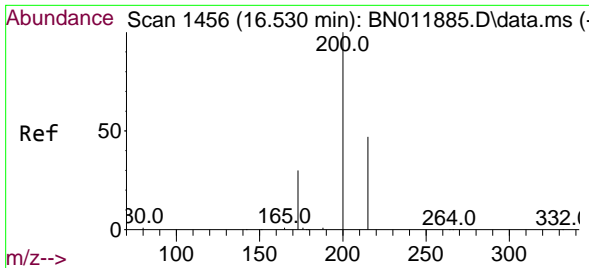
Tgt Ion	Resp	Lower	Upper
248	100		
250	96.1	82.7	124.1
141	86.7	33.7	50.5#



#22  
 Hexachlorobenzene  
 Concen: 0.67 ng  
 RT: 16.372 min Scan# 1443  
 Delta R.T. 0.000 min  
 Lab File: BN011886.D  
 Acq: 23 Sep 2020 16:21

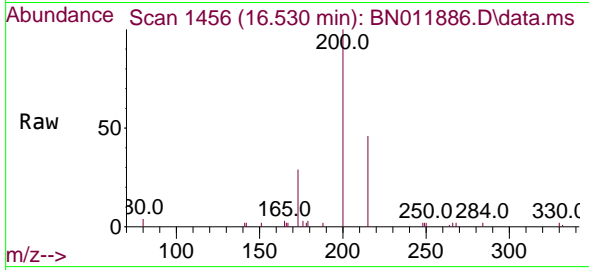
Tgt Ion	Resp	Lower	Upper
284	100		
142	58.3	32.4	48.6#
249	32.4	26.8	40.2



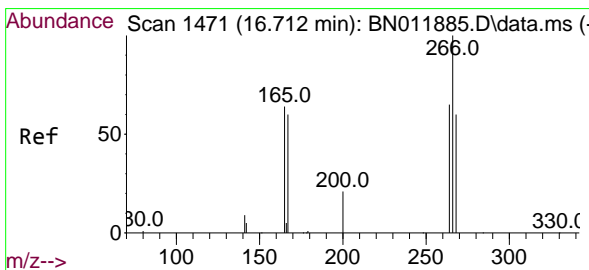
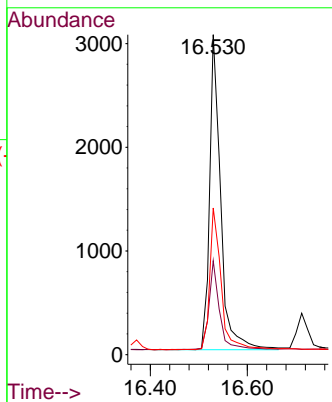
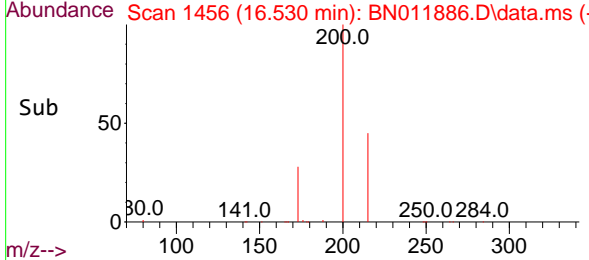


#23  
 Atrazine  
 Concen: 0.74 ng  
 RT: 16.530 min Scan# 1456  
 Delta R.T. 0.000 min  
 Lab File: BN011886.D  
 Acq: 23 Sep 2020 16:21

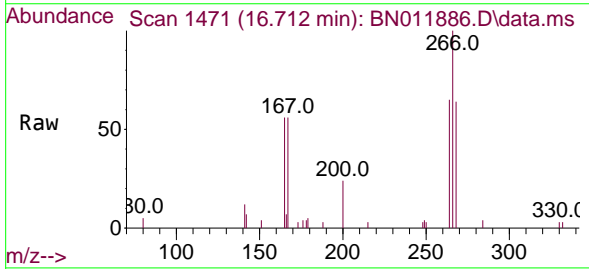
**Instrument :**  
 BNA\_N  
**ClientSampled :**  
 SSTDICC0.8



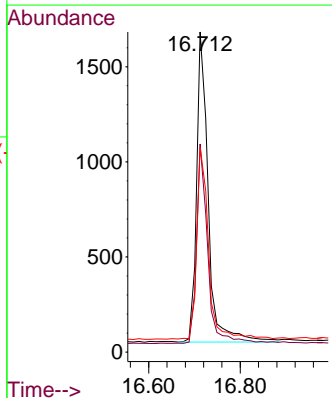
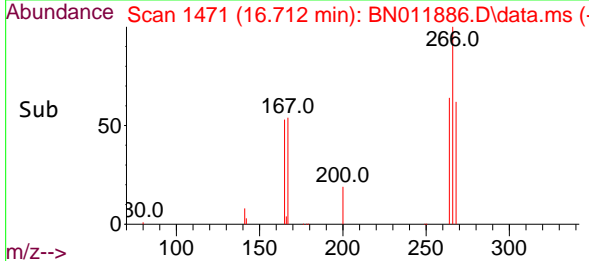
Tgt Ion:200 Resp: 4832  
 Ion Ratio Lower Upper  
 200 100  
 173 29.4 18.7 28.1#  
 215 45.9 40.2 60.4

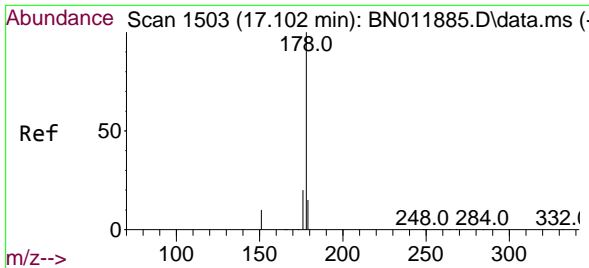


#24  
 Pentachlorophenol  
 Concen: 0.79 ng  
 RT: 16.712 min Scan# 1471  
 Delta R.T. 0.000 min  
 Lab File: BN011886.D  
 Acq: 23 Sep 2020 16:21



Tgt Ion:266 Resp: 2879  
 Ion Ratio Lower Upper  
 266 100  
 264 61.9 51.2 76.8  
 268 62.5 52.4 78.6

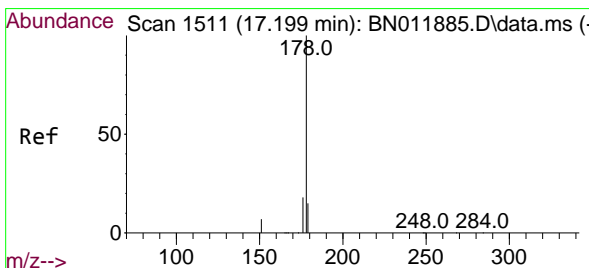
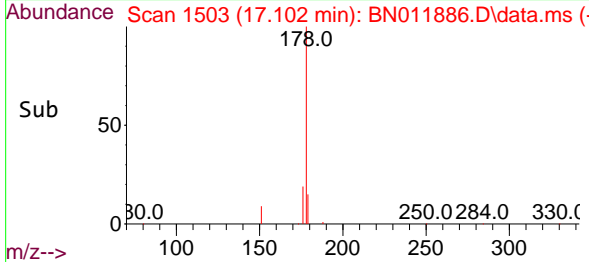
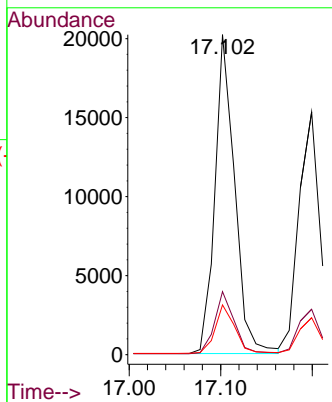
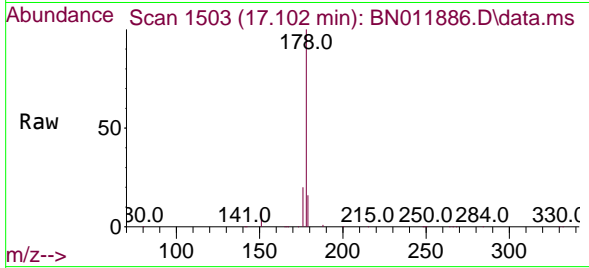




#25  
 Phenanthrene  
 Concen: 0.78 ng  
 RT: 17.102 min Scan# 1503  
 Delta R.T. 0.000 min  
 Lab File: BN011886.D  
 Acq: 23 Sep 2020 16:21

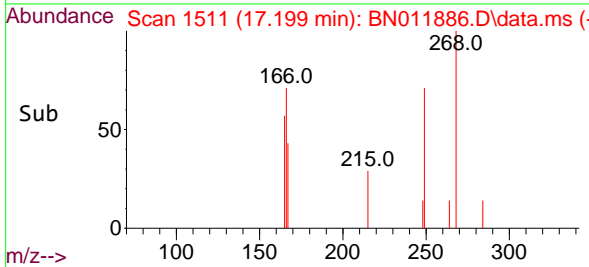
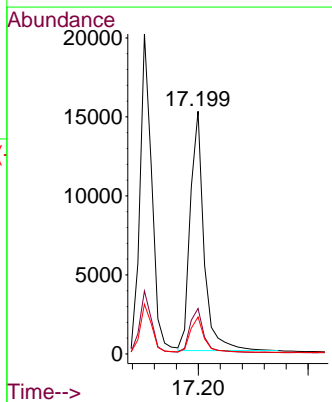
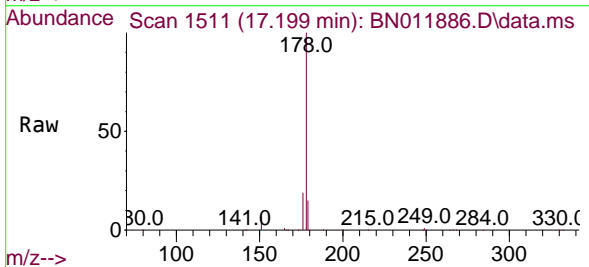
**Instrument :**  
 BNA\_N  
**ClientSampled :**  
 SSTDICC0.8

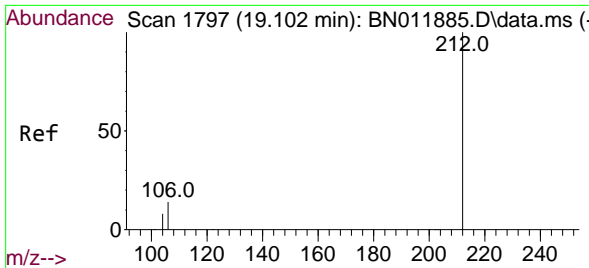
Tgt Ion	Resp	Lower	Upper
178	100		
176	19.6	15.1	22.7
179	15.3	12.3	18.5



#26  
 Anthracene  
 Concen: 0.78 ng  
 RT: 17.199 min Scan# 1511  
 Delta R.T. 0.000 min  
 Lab File: BN011886.D  
 Acq: 23 Sep 2020 16:21

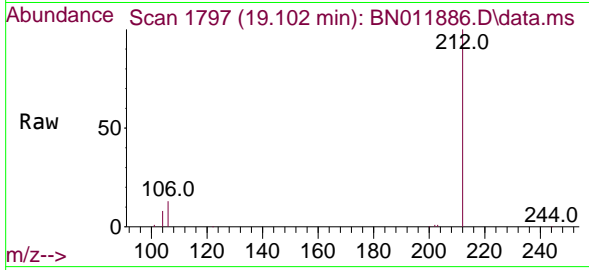
Tgt Ion	Resp	Lower	Upper
178	100		
176	18.8	14.6	21.8
179	15.0	12.4	18.6





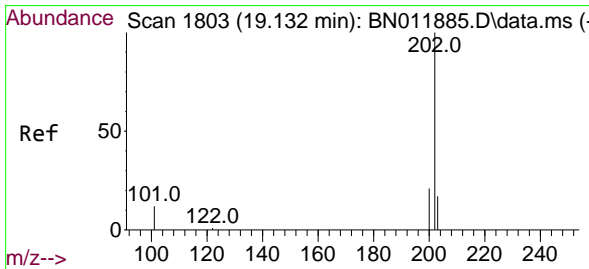
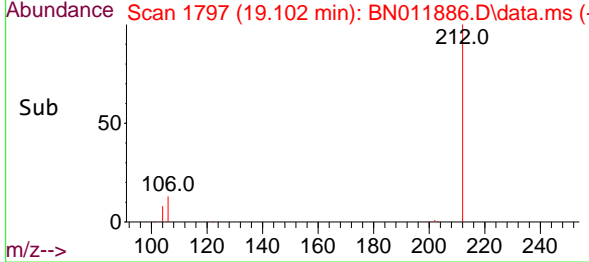
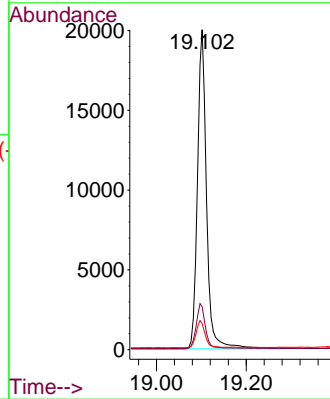
#27  
 Fluoranthene-d10  
 Concen: 0.73 ng  
 RT: 19.102 min Scan# 1797  
 Delta R.T. 0.000 min  
 Lab File: BN011886.D  
 Acq: 23 Sep 2020 16:21

Instrument :  
 BNA\_N  
 ClientSampled :  
 SSTDICC0.8



Tgt Ion:212 Resp: 28354

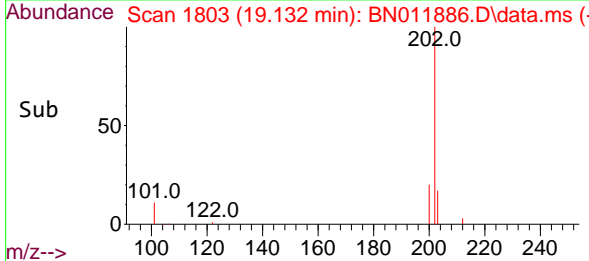
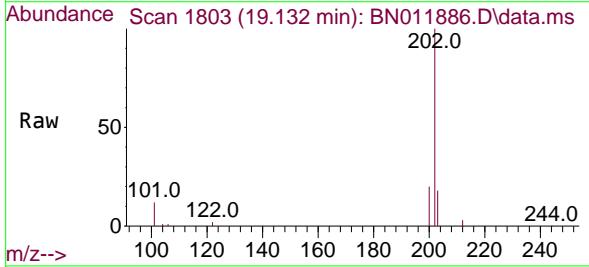
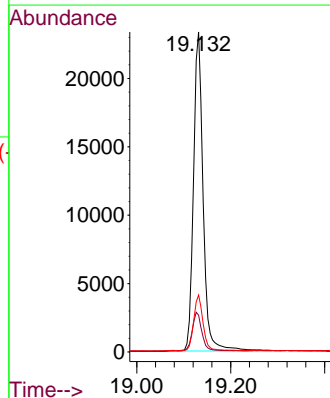
Ion	Ratio	Lower	Upper
212	100		
106	14.3	6.4	9.6#
104	8.3	3.9	5.9#



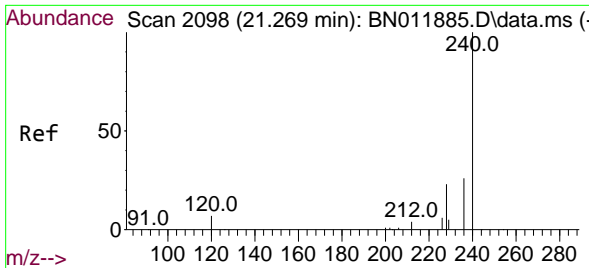
#28  
 Fluoranthene  
 Concen: 0.73 ng  
 RT: 19.132 min Scan# 1803  
 Delta R.T. 0.000 min  
 Lab File: BN011886.D  
 Acq: 23 Sep 2020 16:21

Tgt Ion:202 Resp: 33257

Ion	Ratio	Lower	Upper
202	100		
101	12.4	5.4	8.2#
203	16.8	13.8	20.6



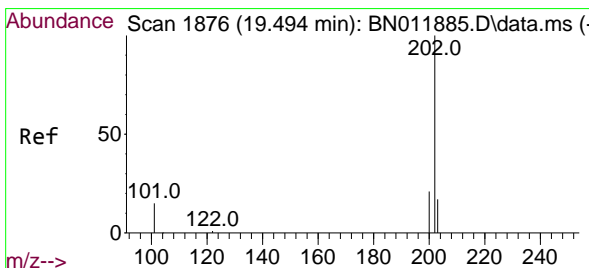
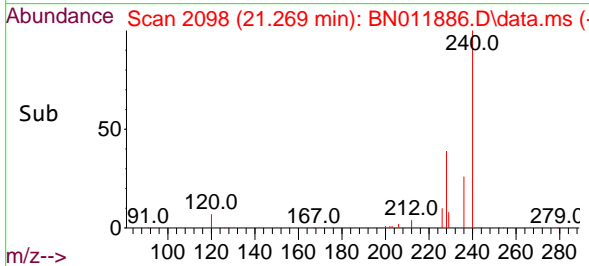
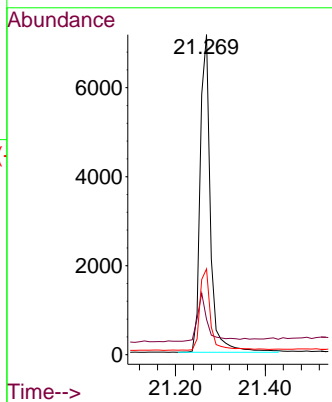
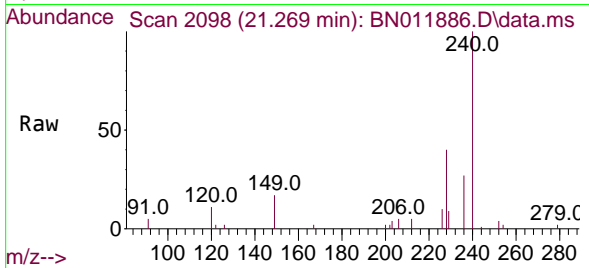




#29  
 Chrysene-d12  
 Concen: 0.40 ng  
 RT: 21.269 min Scan# 2098  
 Delta R.T. 0.000 min  
 Lab File: BN011886.D  
 Acq: 23 Sep 2020 16:21

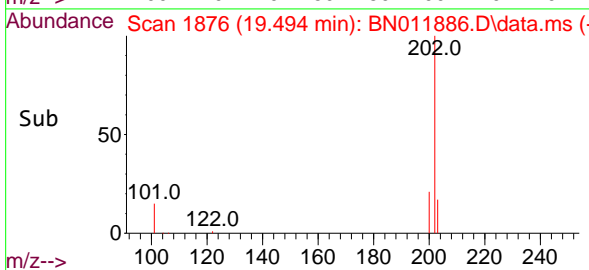
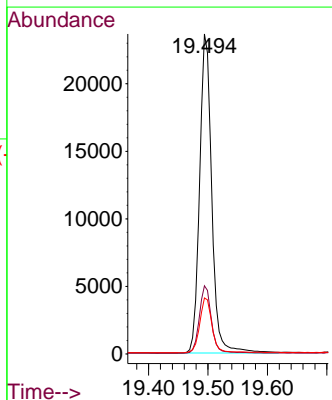
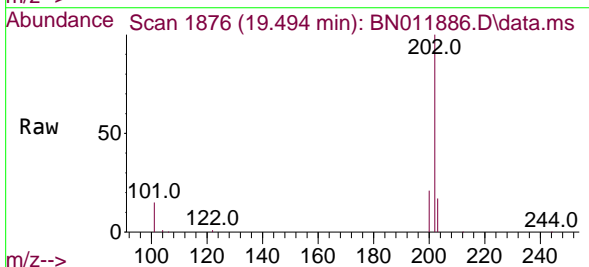
Instrument :  
 BNA\_N  
 ClientSampled :  
 SSTDICC0.8

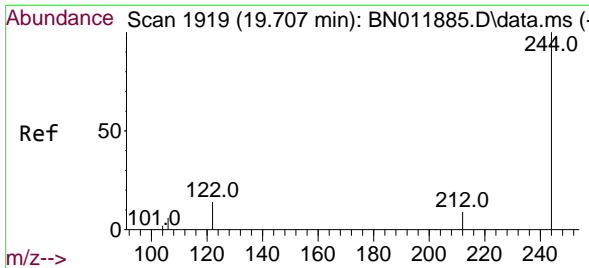
Tgt Ion:240 Resp: 11228  
 Ion Ratio Lower Upper  
 240 100  
 120 11.0 3.5 5.3#  
 236 26.8 20.5 30.7



#30  
 Pyrene  
 Concen: 0.86 ng  
 RT: 19.494 min Scan# 1876  
 Delta R.T. 0.000 min  
 Lab File: BN011886.D  
 Acq: 23 Sep 2020 16:21

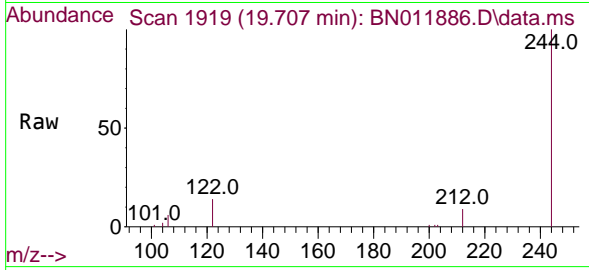
Tgt Ion:202 Resp: 33551  
 Ion Ratio Lower Upper  
 202 100  
 200 21.1 16.5 24.7  
 203 17.5 13.9 20.9





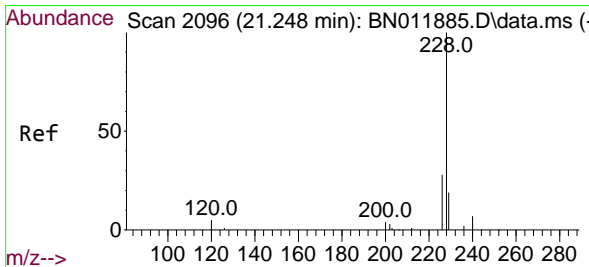
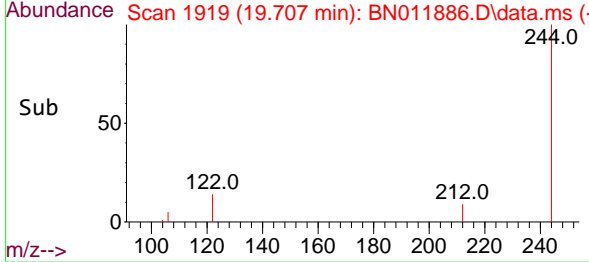
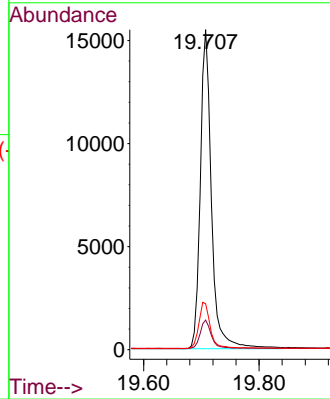
#31  
 Terphenyl-d14  
 Concen: 0.81 ng  
 RT: 19.707 min Scan# 1919  
 Delta R.T. 0.000 min  
 Lab File: BN011886.D  
 Acq: 23 Sep 2020 16:21

**Instrument :**  
 BNA\_N  
**ClientSampled :**  
 SSTDICC0.8



Tgt Ion:244 Resp: 20804

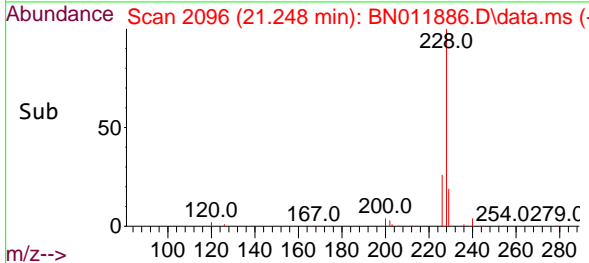
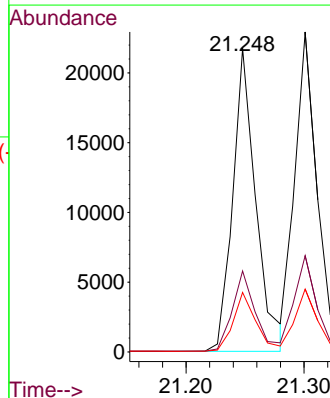
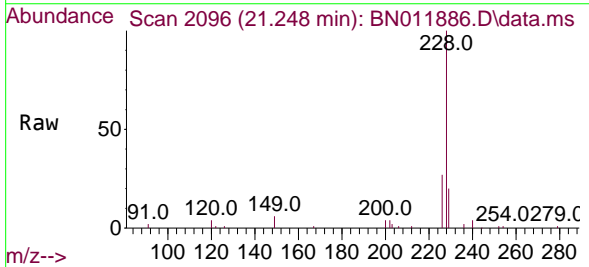
Ion	Ratio	Lower	Upper
244	100		
212	9.2	7.3	10.9
122	14.3	7.8	11.6#

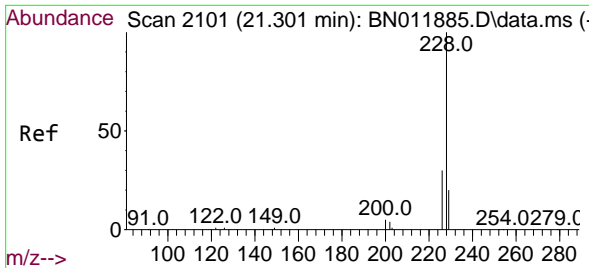


#32  
 Benzo(a)anthracene  
 Concen: 0.78 ng  
 RT: 21.248 min Scan# 2096  
 Delta R.T. 0.000 min  
 Lab File: BN011886.D  
 Acq: 23 Sep 2020 16:21

Tgt Ion:228 Resp: 29612

Ion	Ratio	Lower	Upper
228	100		
226	26.6	21.0	31.4
229	19.6	16.0	24.0

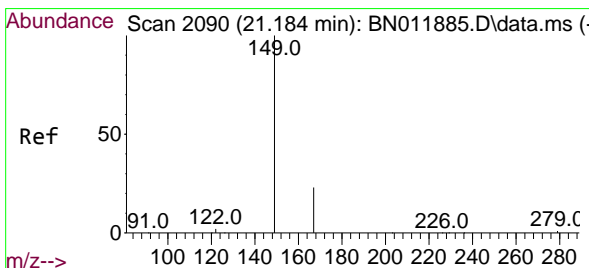
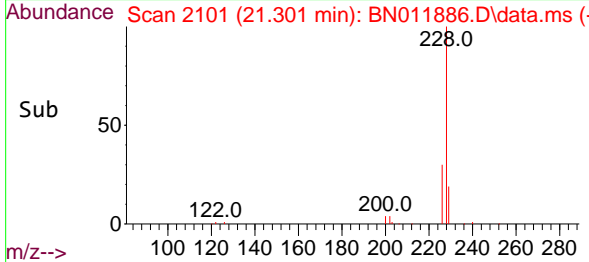
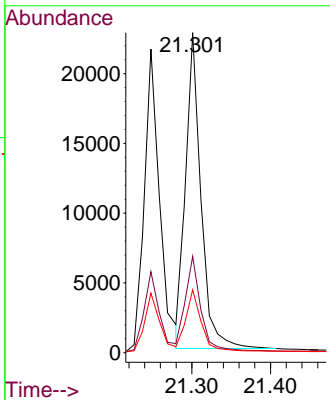
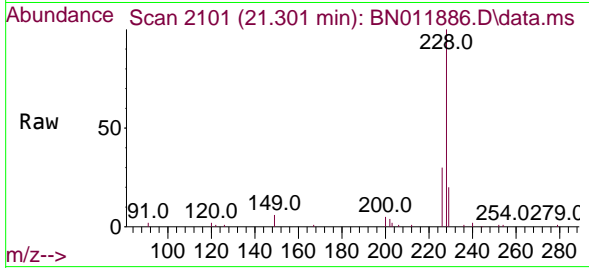




#33  
 Chrysene  
 Concen: 0.79 ng  
 RT: 21.301 min Scan# 2101  
 Delta R.T. 0.000 min  
 Lab File: BN011886.D  
 Acq: 23 Sep 2020 16:21

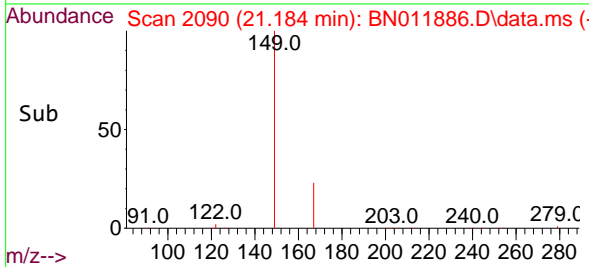
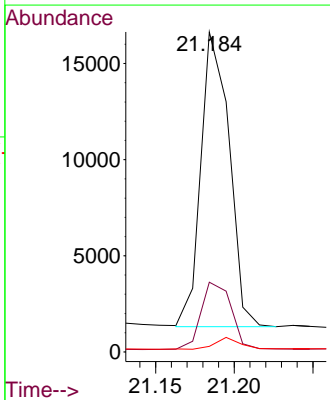
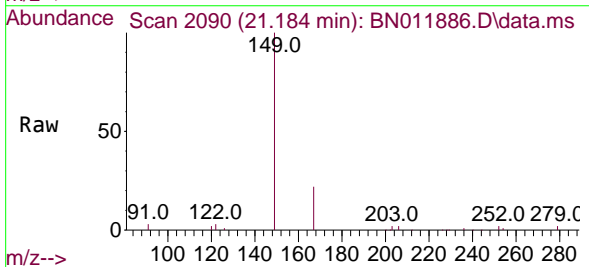
**Instrument :**  
 BNA\_N  
**ClientSampled :**  
 SSTDICC0.8

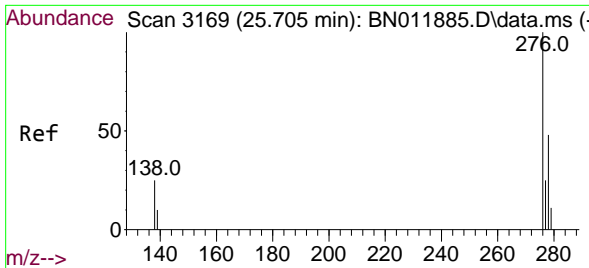
Tgt Ion	Resp	Lower	Upper
228	100		
226	30.1	23.3	34.9
229	19.6	15.8	23.8



#34  
 Bis(2-ethylhexyl)phthalate  
 Concen: 0.98 ng  
 RT: 21.184 min Scan# 2090  
 Delta R.T. 0.000 min  
 Lab File: BN011886.D  
 Acq: 23 Sep 2020 16:21

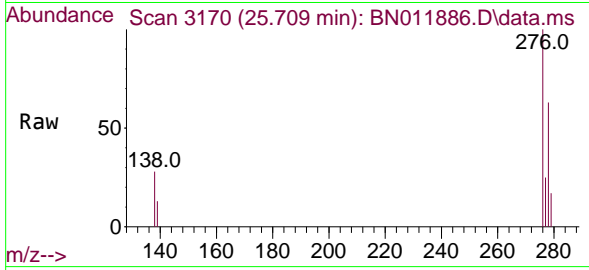
Tgt Ion	Resp	Lower	Upper
149	100		
167	24.2	23.6	35.4
279	3.5	4.0	6.0



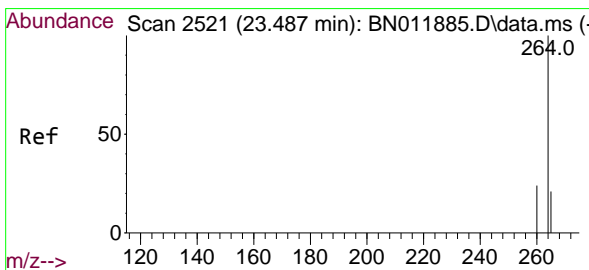
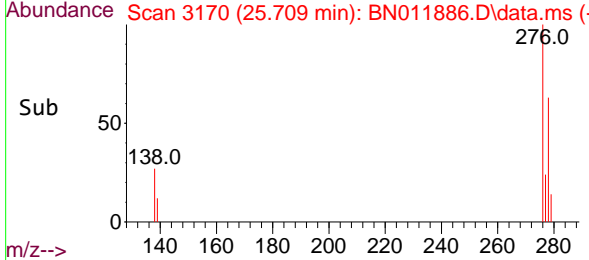
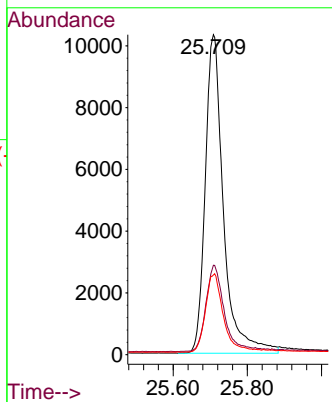


#35  
 Indeno(1,2,3-cd)pyrene  
 Concen: 0.72 ng  
 RT: 25.709 min Scan# 3170  
 Delta R.T. 0.003 min  
 Lab File: BN011886.D  
 Acq: 23 Sep 2020 16:21

Instrument :  
 BNA\_N  
 ClientSampled :  
 SSTDICC0.8

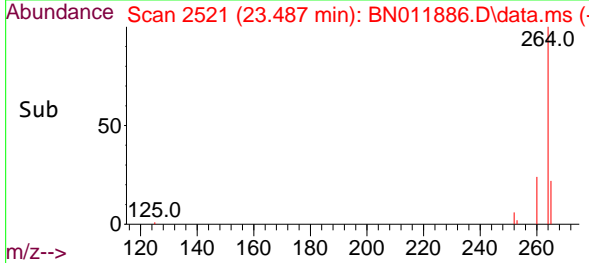
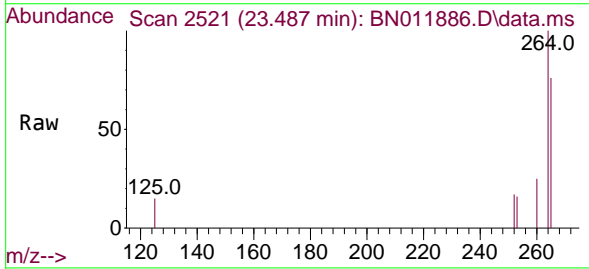
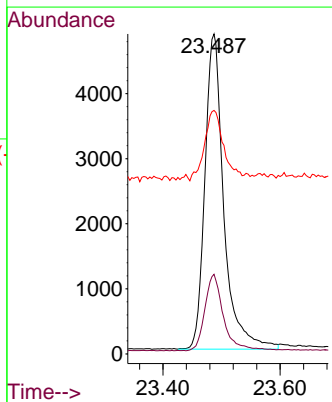


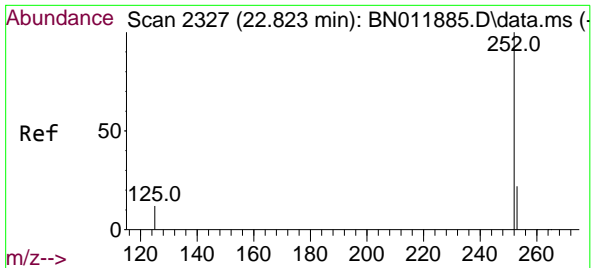
Tgt Ion:276 Resp: 35159  
 Ion Ratio Lower Upper  
 276 100  
 138 27.1 13.0 19.4#  
 277 24.5 20.0 30.0



#36  
 Perylene-d12  
 Concen: 0.40 ng  
 RT: 23.487 min Scan# 2521  
 Delta R.T. 0.000 min  
 Lab File: BN011886.D  
 Acq: 23 Sep 2020 16:21

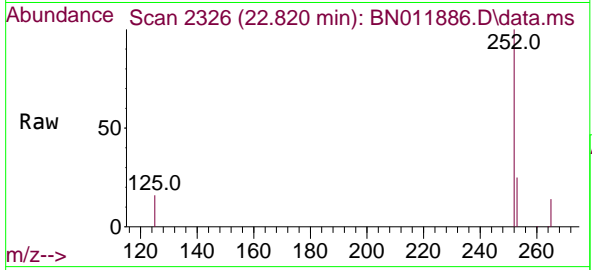
Tgt Ion:264 Resp: 10859  
 Ion Ratio Lower Upper  
 264 100  
 260 24.9 19.6 29.4  
 265 76.1 38.6 58.0#



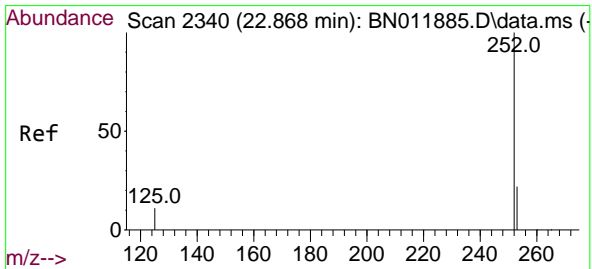
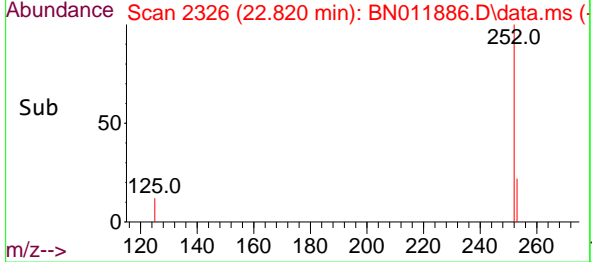
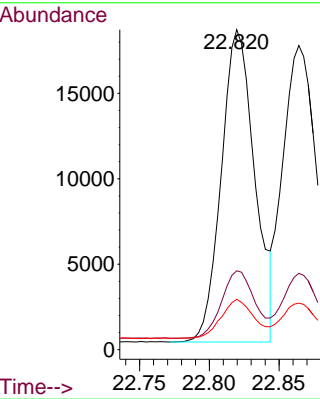


#37  
 Benzo(b)fluoranthene  
 Concen: 0.75 ng  
 RT: 22.820 min Scan# 2326  
 Delta R.T. -0.003 min  
 Lab File: BN011886.D  
 Acq: 23 Sep 2020 16:21

**Instrument :**  
 BNA\_N  
**ClientSampled :**  
 SSTDICC0.8

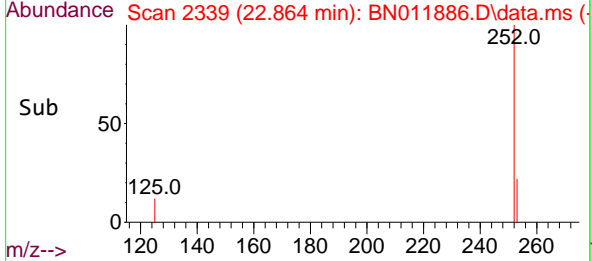
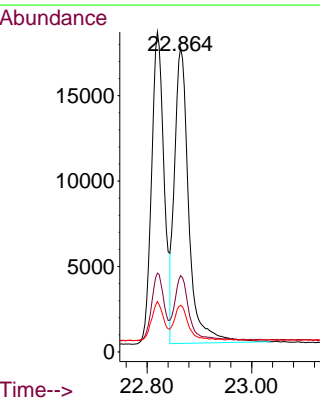
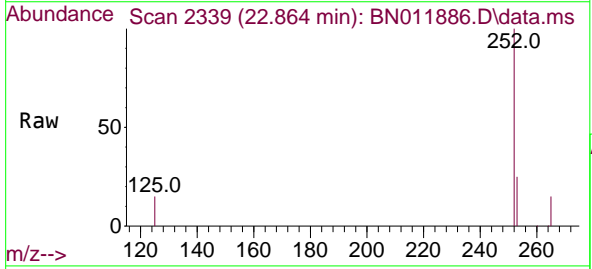


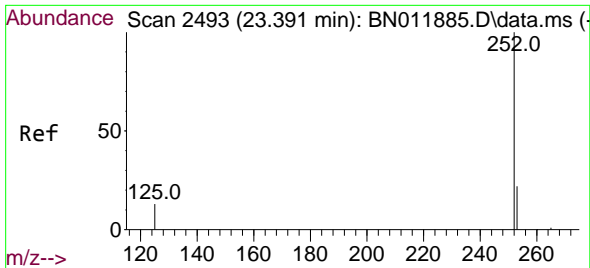
Tgt Ion:252 Resp: 30515  
 Ion Ratio Lower Upper  
 252 100  
 253 24.7 19.1 28.7  
 125 15.8 6.2 9.2#



#38  
 Benzo(k)fluoranthene  
 Concen: 0.78 ng  
 RT: 22.864 min Scan# 2339  
 Delta R.T. -0.003 min  
 Lab File: BN011886.D  
 Acq: 23 Sep 2020 16:21

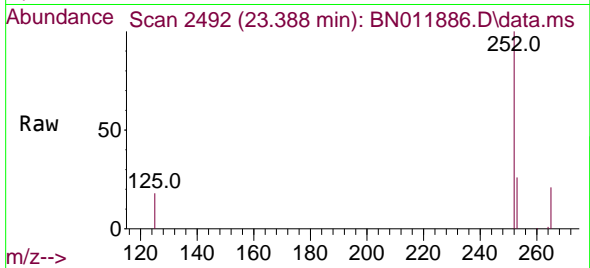
Tgt Ion:252 Resp: 32776  
 Ion Ratio Lower Upper  
 252 100  
 253 25.1 19.3 28.9  
 125 15.3 6.0 9.0#



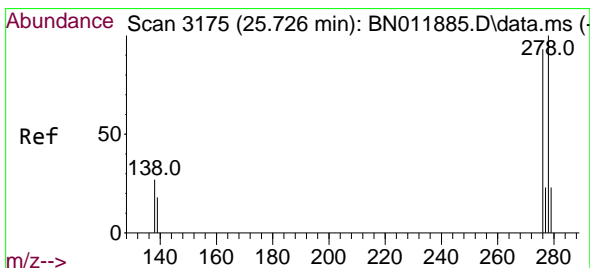
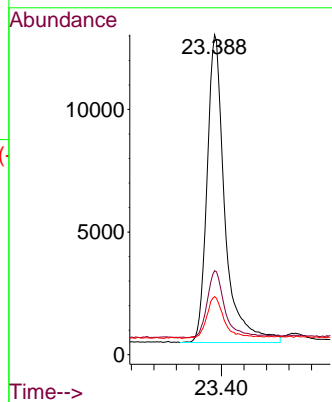
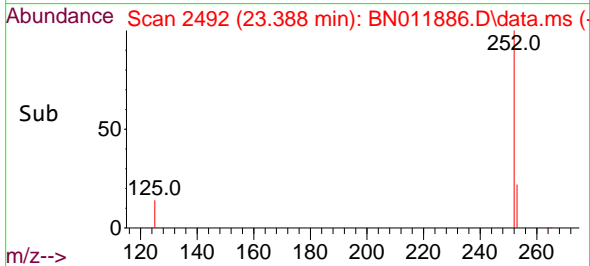


#39  
 Benzo(a)pyrene  
 Concen: 0.76 ng  
 RT: 23.388 min Scan# 2492  
 Delta R.T. -0.003 min  
 Lab File: BN011886.D  
 Acq: 23 Sep 2020 16:21

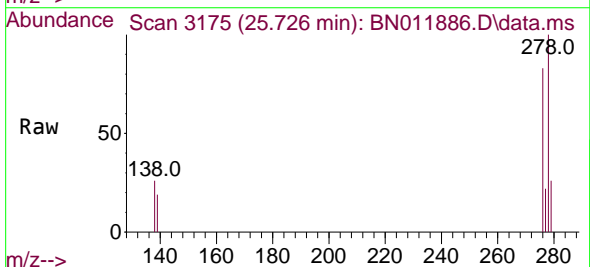
Instrument :  
 BNA\_N  
 ClientSampleId :  
 SSTDICC0.8



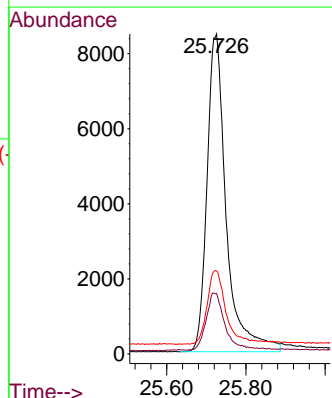
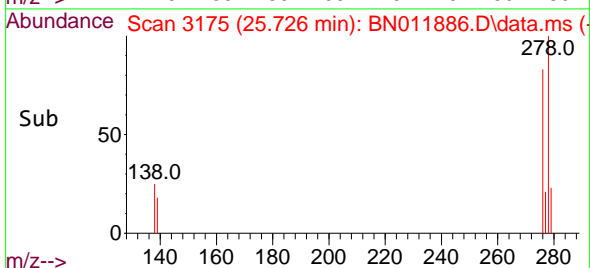
Tgt Ion:252 Resp: 27550  
 Ion Ratio Lower Upper  
 252 100  
 253 26.2 19.8 29.6  
 125 18.2 7.3 10.9#

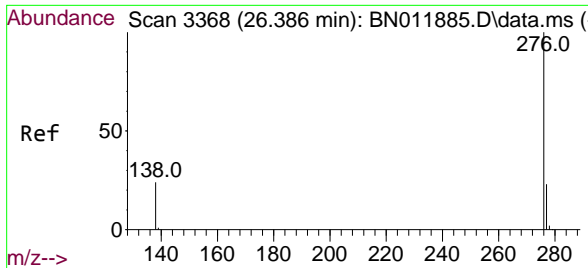


#40  
 Dibenzo(a,h)anthracene  
 Concen: 0.72 ng  
 RT: 25.726 min Scan# 3175  
 Delta R.T. 0.000 min  
 Lab File: BN011886.D  
 Acq: 23 Sep 2020 16:21



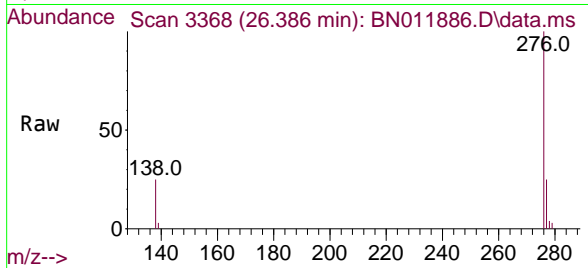
Tgt Ion:278 Resp: 28543  
 Ion Ratio Lower Upper  
 278 100  
 139 18.9 8.6 13.0#  
 279 25.9 19.8 29.8





#41  
 Benzo(g,h,i)perylene  
 Concen: 0.71 ng  
 RT: 26.386 min Scan# 3368  
 Delta R.T. 0.000 min  
 Lab File: BN011886.D  
 Acq: 23 Sep 2020 16:21

Instrument :  
 BNA\_N  
 ClientSampled :  
 SSTDICC0.8



Tgt Ion: 276 Resp: 30097

Ion	Ratio	Lower	Upper
276	100		
277	24.8	19.4	29.0
138	24.7	11.3	16.9#

