

Data Path : Z:\svoasrv\HPCHEM1\BNA_N\Data\BN092320\
 Data File : BN011898.D
 Acq On : 24 Sep 2020 03:51
 Operator : CG/JU
 Sample : L4082-09
 Misc :
 ALS Vial : 17 Sample Multiplier: 1

Instrument :
 BNA_N
 ClientSampleId :
 RE134D2-20200915

Quant Time: Sep 24 05:05:00 2020
 Quant Method : Z:\svoasrv\HPCHEM1\BNA_N\Methods\8270-SIM-BN092320.M
 Quant Title : ASP BNA STANDARDS FOR 5 POINT CALIBRATION
 QLast Update : Wed Sep 23 18:41:41 2020
 Response via : Initial Calibration

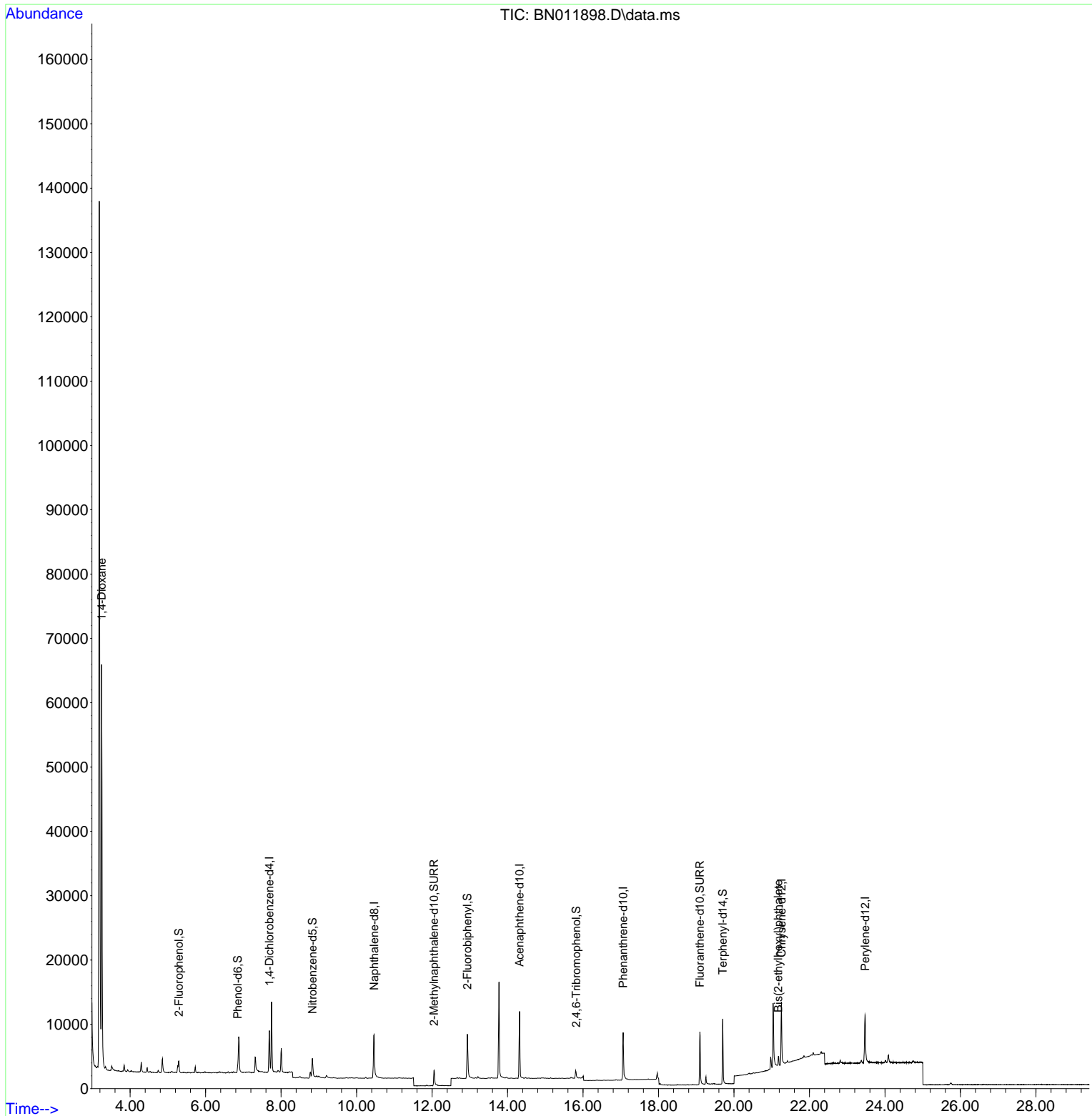
Compound	R.T.	QIon	Response	Conc	Units	Dev(Min)	
Internal Standards							
1) 1,4-Dichlorobenzene-d4	7.691	152	2873	0.40	ng	0.00	
7) Naphthalene-d8	10.465	136	11575	0.40	ng	# 0.00	
13) Acenaphthene-d10	14.319	164	6072	0.40	ng	0.00	
19) Phenanthrene-d10	17.065	188	12166	0.40	ng	0.00	
29) Chrysene-d12	21.258	240	11082	0.40	ng	#-0.01	
36) Perylene-d12	23.473	264	11272	0.40	ng	#-0.01	
System Monitoring Compounds							
4) 2-Fluorophenol	5.291	112	1275	0.13	ng	0.00	
5) Phenol-d6	6.853	99	936	0.07	ng	0.00	
8) Nitrobenzene-d5	8.830	82	3092	0.26	ng	0.00	
11) 2-Methylnaphthalene-d10	12.055	152	4359	0.24	ng	0.00	
14) 2,4,6-Tribromophenol	15.816	330	998	0.34	ng	0.00	
15) 2-Fluorobiphenyl	12.936	172	6817	0.30	ng	0.00	
27) Fluoranthene-d10	19.097	212	10354	0.29	ng	0.00	
31) Terphenyl-d14	19.702	244	10804	0.43	ng	0.00	
Target Compounds							Qvalue
2) 1,4-Dioxane	3.245	88	32855	6.57	ng		95
34) Bis(2-ethylhexyl)phtha...	21.173	149	1582	0.06	ng		92

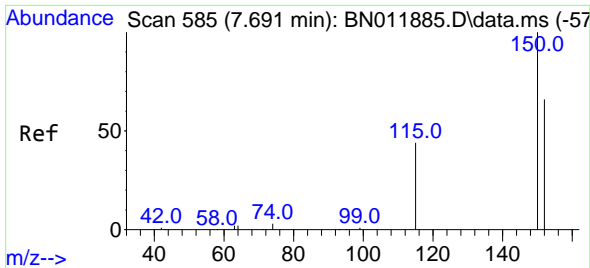
(#) = qualifier out of range (m) = manual integration (+) = signals summed

Data Path : Z:\svoasrv\HPCHEM1\BNA_N\Data\BN092320\
 Data File : BN011898.D
 Acq On : 24 Sep 2020 03:51
 Operator : CG/JU
 Sample : L4082-09
 Misc :
 ALS Vial : 17 Sample Multiplier: 1

Instrument :
 BNA_N
 ClientSampleId :
 RE134D2-20200915

Quant Time: Sep 24 05:05:00 2020
 Quant Method : Z:\svoasrv\HPCHEM1\BNA_N\Methods\8270-SIM-BN092320.M
 Quant Title : ASP BNA STANDARDS FOR 5 POINT CALIBRATION
 QLast Update : Wed Sep 23 18:41:41 2020
 Response via : Initial Calibration

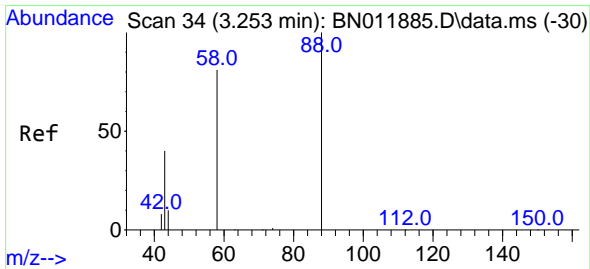
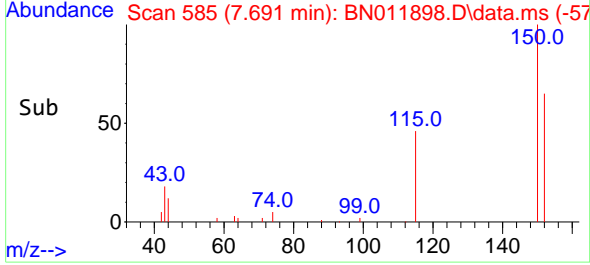
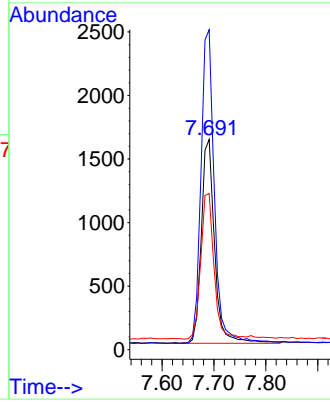
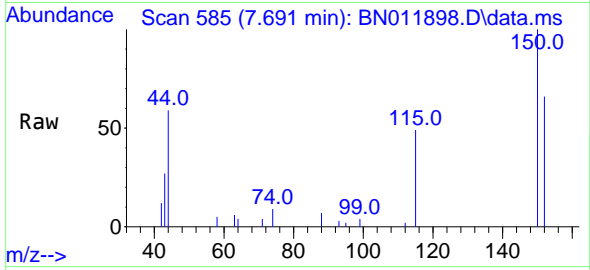




#1
 1,4-Dichlorobenzene-d4
 Concen: 0.40 ng
 RT: 7.691 min Scan# 585
 Delta R.T. -0.000 min
 Lab File: BN011898.D
 Acq: 24 Sep 2020 03:51

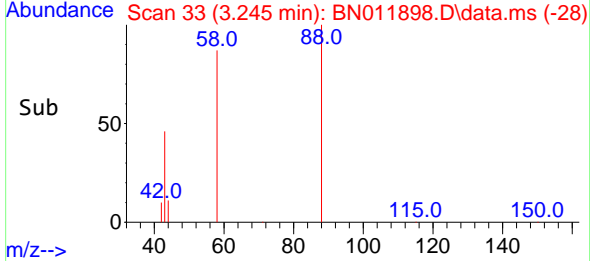
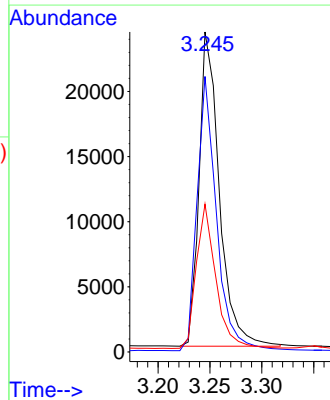
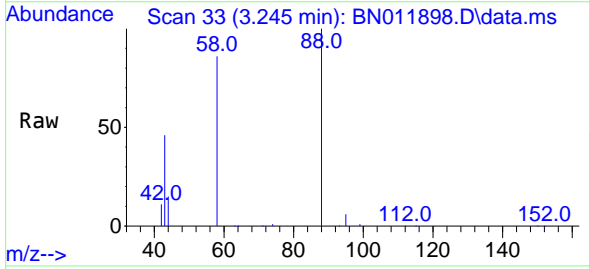
Instrument :
 BNA_N
ClientSampled :
 RE134D2-20200915

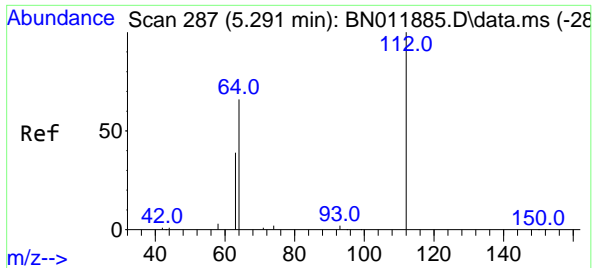
Tgt Ion:152 Resp: 2873
 Ion Ratio Lower Upper
 152 100
 150 152.2 118.3 177.5
 115 74.2 51.3 76.9



#2
 1,4-Dioxane
 Concen: 6.57 ng
 RT: 3.245 min Scan# 33
 Delta R.T. -0.008 min
 Lab File: BN011898.D
 Acq: 24 Sep 2020 03:51

Tgt Ion: 88 Resp: 32855
 Ion Ratio Lower Upper
 88 100
 58 83.6 63.3 94.9
 43 44.2 33.0 49.4

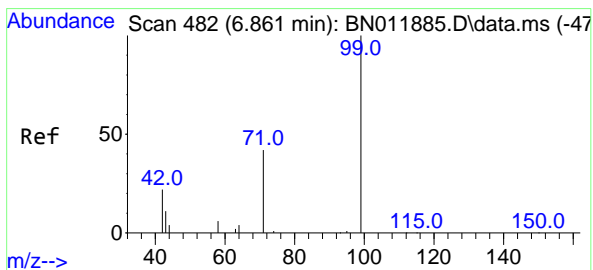
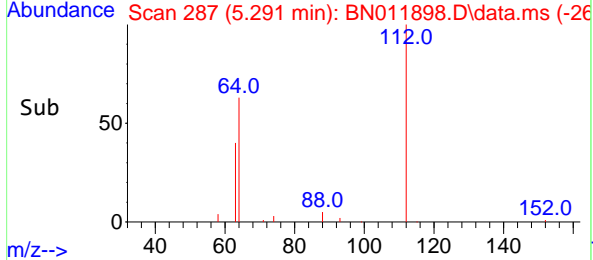
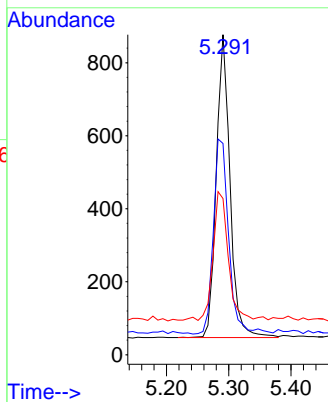
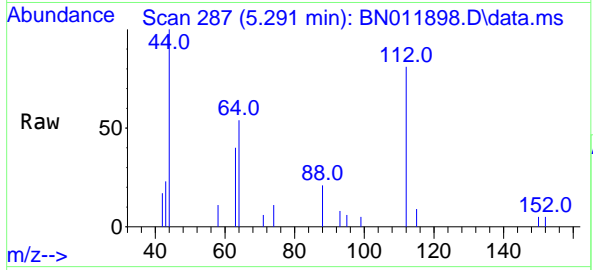




#4
 2-Fluorophenol
 Concen: 0.13 ng
 RT: 5.291 min Scan# 287
 Delta R.T. -0.000 min
 Lab File: BN011898.D
 Acq: 24 Sep 2020 03:51

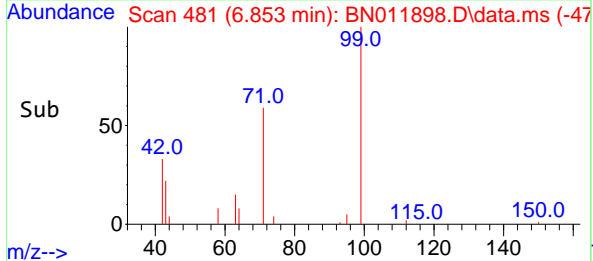
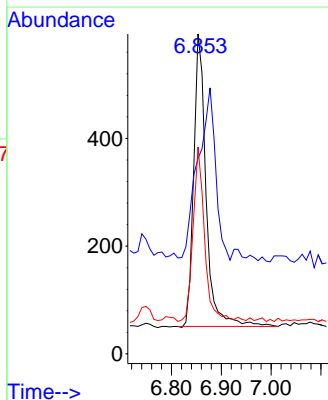
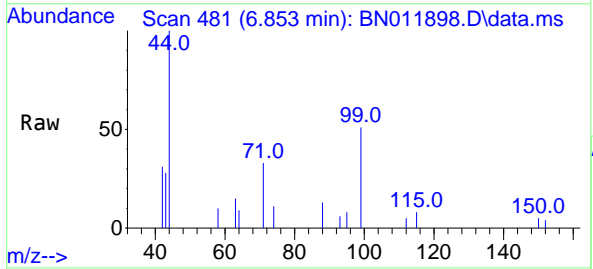
Instrument :
 BNA_N
 ClientSampleId :
 RE134D2-20200915

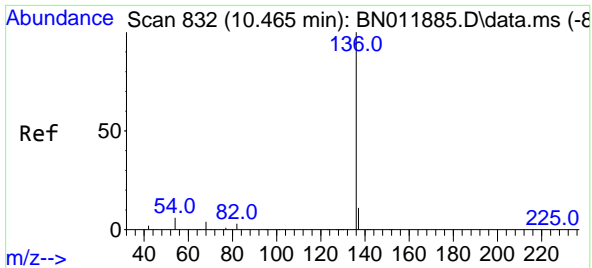
Tgt Ion	Resp	Lower	Upper
112	1275		
112	100		
64	71.8	49.0	73.6
63	46.6	31.8	47.6



#5
 Phenol-d6
 Concen: 0.07 ng
 RT: 6.853 min Scan# 481
 Delta R.T. -0.008 min
 Lab File: BN011898.D
 Acq: 24 Sep 2020 03:51

Tgt Ion	Resp	Lower	Upper
99	936		
99	100		
42	0.0	23.4	35.0
71	55.3	38.1	57.1



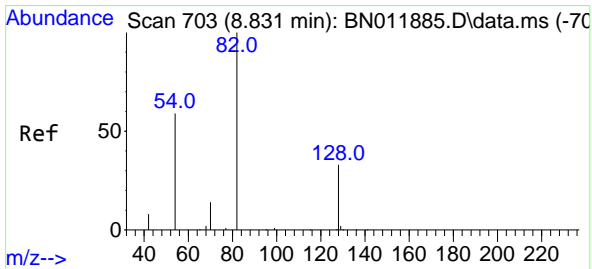
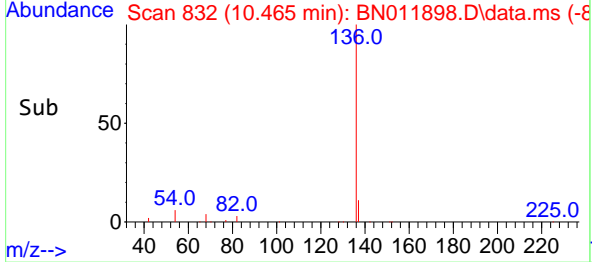
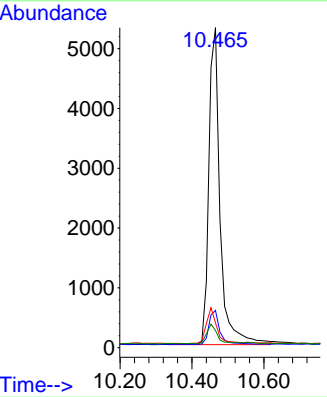
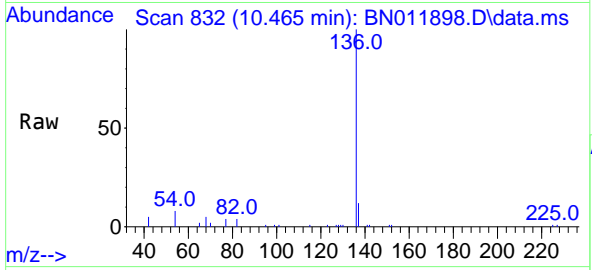


#7
 Naphthalene-d8
 Concen: 0.40 ng
 RT: 10.465 min Scan# 832
 Delta R.T. -0.000 min
 Lab File: BN011898.D
 Acq: 24 Sep 2020 03:51

Instrument :
 BNA_N
 ClientSampleId :
 RE134D2-20200915

Tgt Ion:136 Resp: 11575

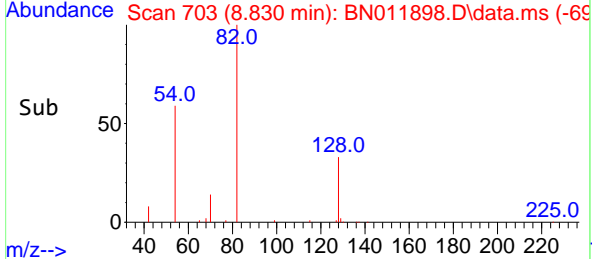
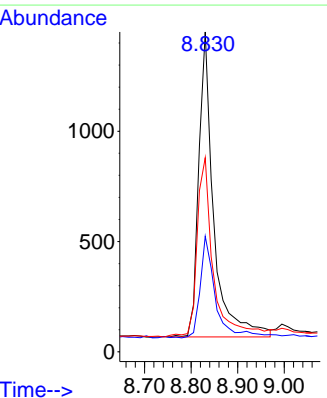
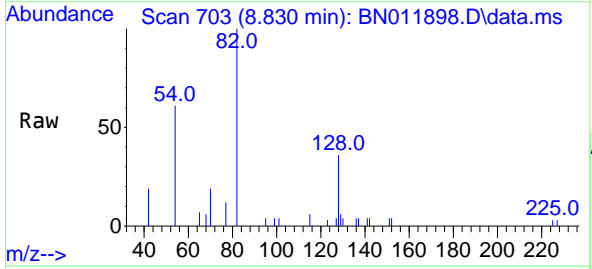
Ion	Ratio	Lower	Upper
136	100		
137	11.6	9.5	14.3
54	7.8	5.6	8.4
68	5.3	3.2	4.8#

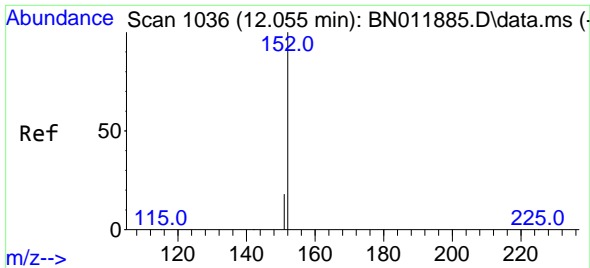


#8
 Nitrobenzene-d5
 Concen: 0.26 ng
 RT: 8.830 min Scan# 703
 Delta R.T. -0.000 min
 Lab File: BN011898.D
 Acq: 24 Sep 2020 03:51

Tgt Ion: 82 Resp: 3092

Ion	Ratio	Lower	Upper
82	100		
128	36.1	34.2	51.2
54	60.7	43.1	64.7

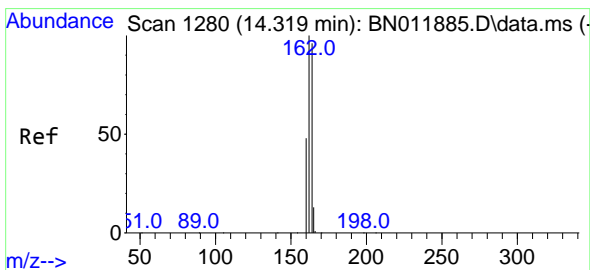
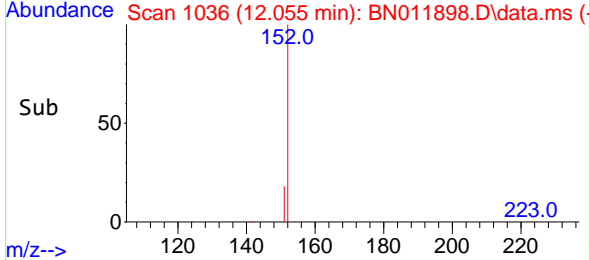
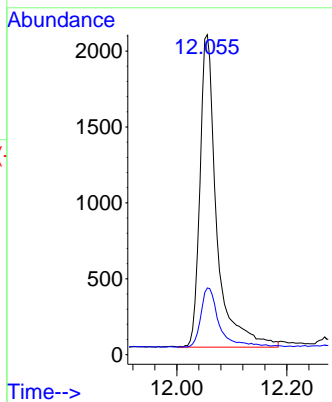
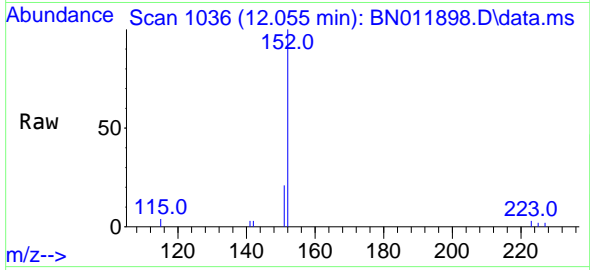




#11
 2-Methylnaphthalene-d10
 Concen: 0.24 ng
 RT: 12.055 min Scan# 1036
 Delta R.T. -0.000 min
 Lab File: BN011898.D
 Acq: 24 Sep 2020 03:51

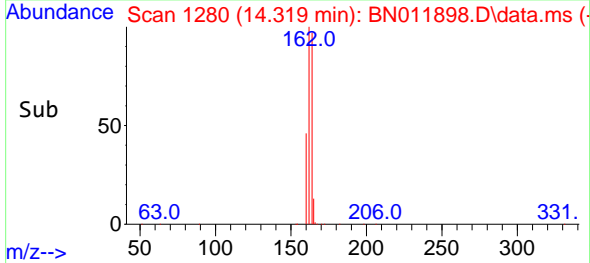
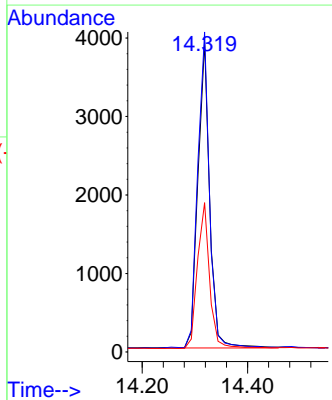
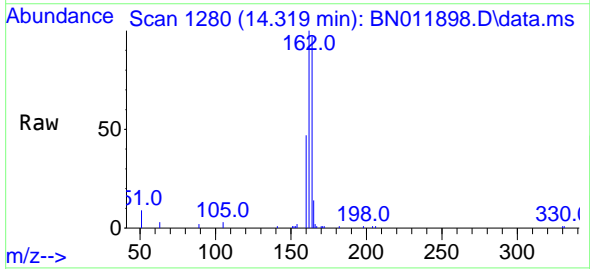
Instrument :
 BNA_N
 ClientSampleId :
 RE134D2-20200915

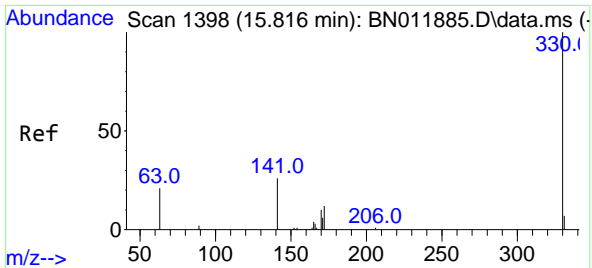
Tgt Ion:152 Resp: 4359
 Ion Ratio Lower Upper
 152 100
 151 20.6 16.7 25.1



#13
 Acenaphthene-d10
 Concen: 0.40 ng
 RT: 14.319 min Scan# 1280
 Delta R.T. -0.000 min
 Lab File: BN011898.D
 Acq: 24 Sep 2020 03:51

Tgt Ion:164 Resp: 6072
 Ion Ratio Lower Upper
 164 100
 162 103.3 83.6 125.4
 160 48.2 41.2 61.8



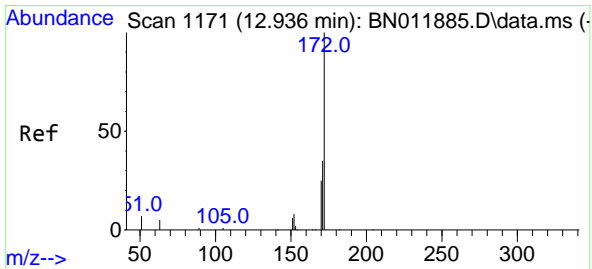
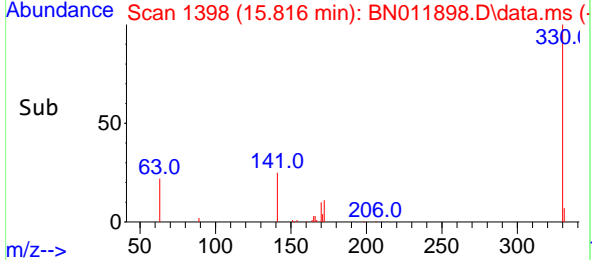
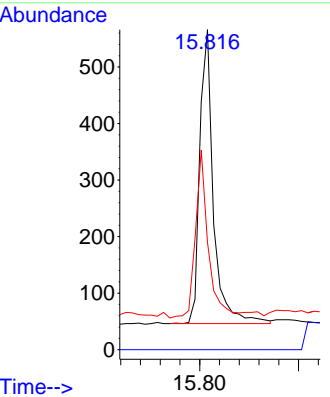
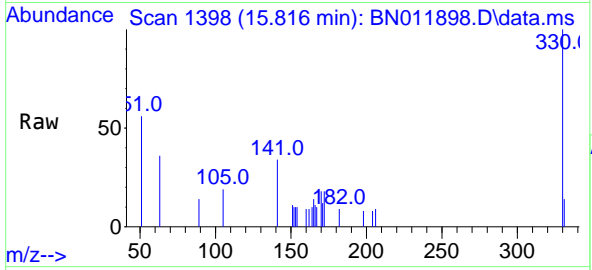


#14
 2,4,6-Tribromophenol
 Concen: 0.34 ng
 RT: 15.816 min Scan# 1398
 Delta R.T. -0.000 min
 Lab File: BN011898.D
 Acq: 24 Sep 2020 03:51

Instrument :
 BNA_N
 ClientSampleId :
 RE134D2-20200915

Tgt Ion:330 Resp: 998

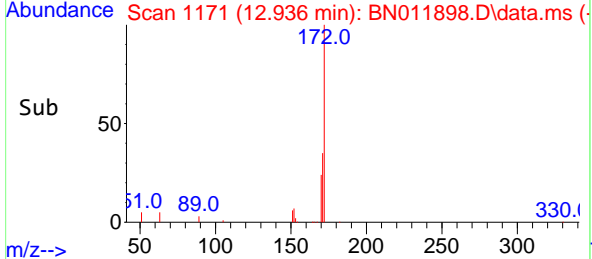
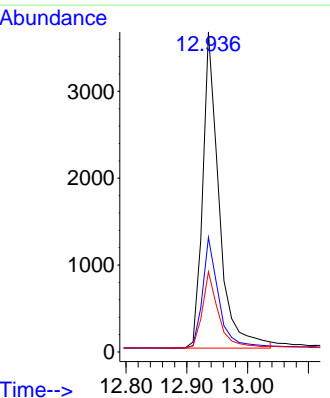
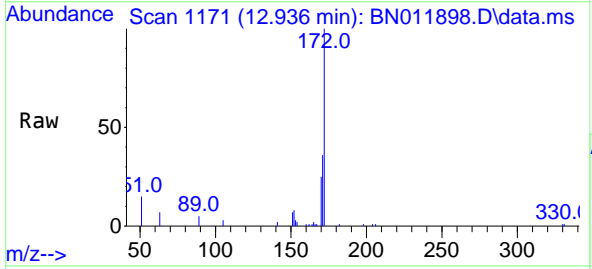
Ion	Ratio	Lower	Upper
330	100		
332	0.0	0.0	0.0
141	53.5	33.7	50.5#

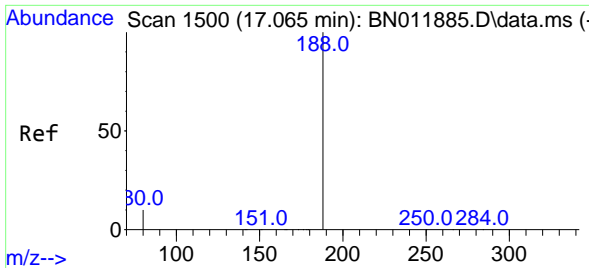


#15
 2-Fluorobiphenyl
 Concen: 0.30 ng
 RT: 12.936 min Scan# 1171
 Delta R.T. -0.000 min
 Lab File: BN011898.D
 Acq: 24 Sep 2020 03:51

Tgt Ion:172 Resp: 6817

Ion	Ratio	Lower	Upper
172	100		
171	35.8	27.4	41.2
170	25.1	17.8	26.6

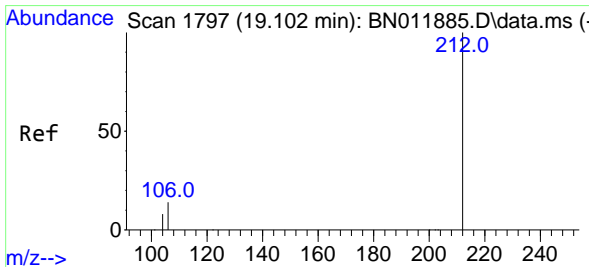
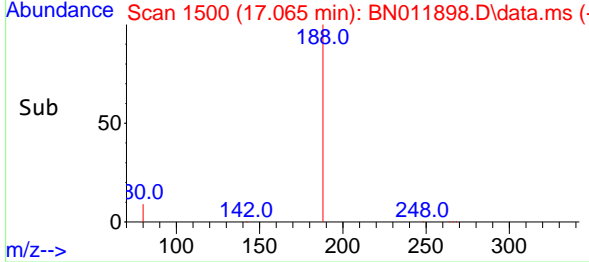
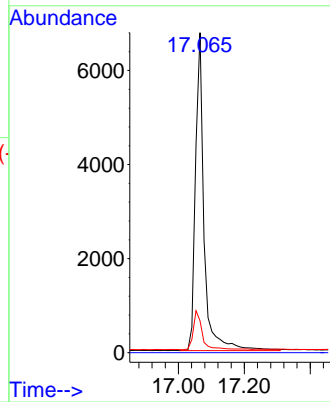
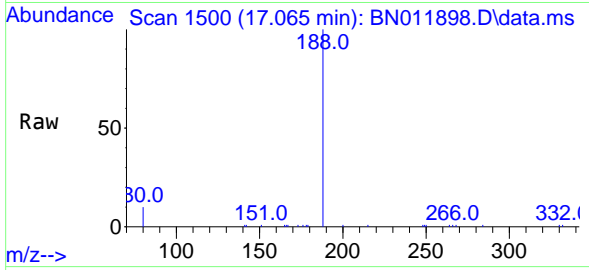




#19
 Phenanthrene-d10
 Concen: 0.40 ng
 RT: 17.065 min Scan# 1500
 Delta R.T. -0.000 min
 Lab File: BN011898.D
 Acq: 24 Sep 2020 03:51

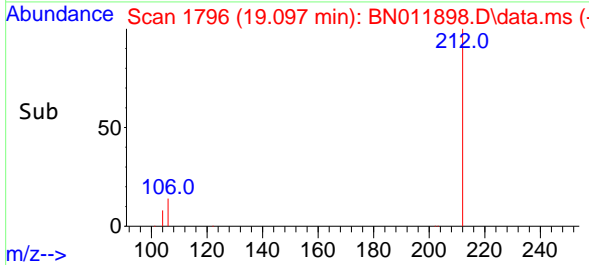
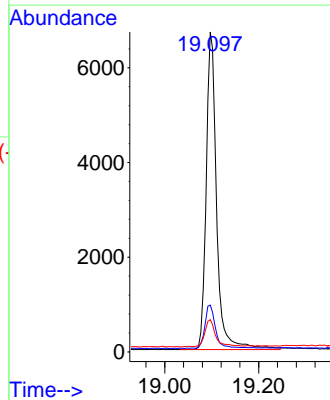
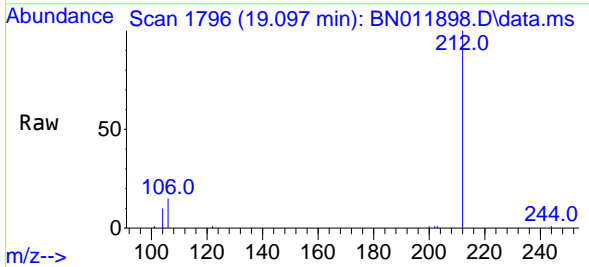
Instrument :
 BNA_N
ClientSampleId :
 RE134D2-20200915

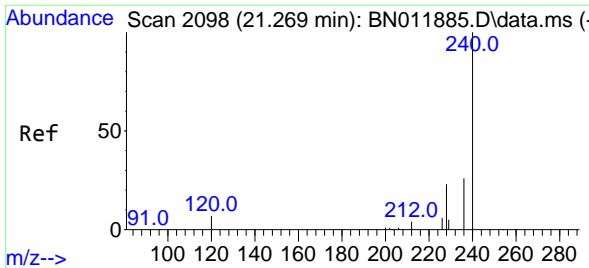
Tgt Ion	Resp	Lower	Upper
188	12166		
188	100		
94	0.0	0.0	0.0
80	10.0	7.7	11.5



#27
 Fluoranthene-d10
 Concen: 0.29 ng
 RT: 19.097 min Scan# 1796
 Delta R.T. -0.005 min
 Lab File: BN011898.D
 Acq: 24 Sep 2020 03:51

Tgt Ion	Resp	Lower	Upper
212	10354		
212	100		
106	14.1	6.4	9.6#
104	8.7	3.9	5.9#



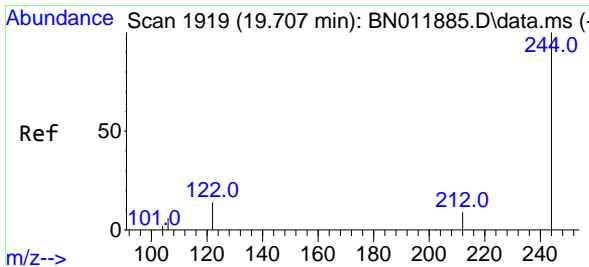
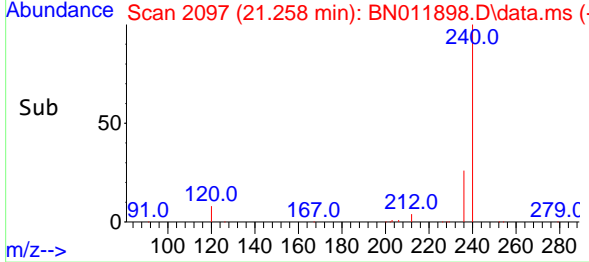
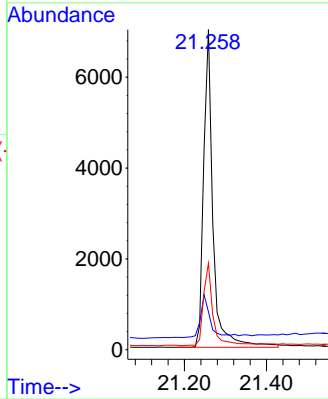
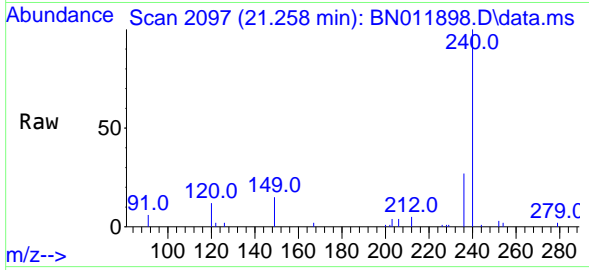


#29
 Chrysene-d12
 Concen: 0.40 ng
 RT: 21.258 min Scan# 2097
 Delta R.T. -0.011 min
 Lab File: BN011898.D
 Acq: 24 Sep 2020 03:51

Instrument :
 BNA_N
ClientSampleId :
 RE134D2-20200915

Tgt Ion:240 Resp: 11082

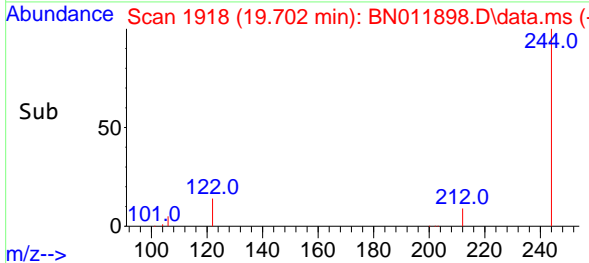
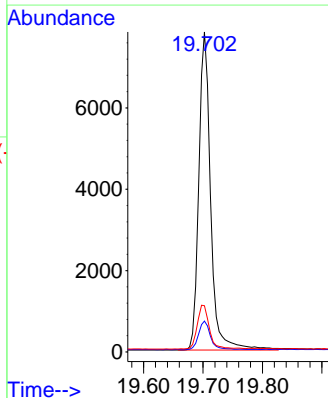
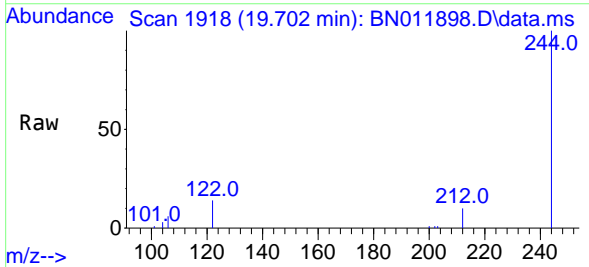
Ion	Ratio	Lower	Upper
240	100		
120	11.8	3.5	5.3#
236	27.1	20.5	30.7

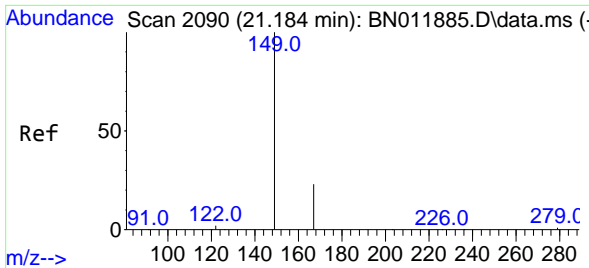


#31
 Terphenyl-d14
 Concen: 0.43 ng
 RT: 19.702 min Scan# 1918
 Delta R.T. -0.005 min
 Lab File: BN011898.D
 Acq: 24 Sep 2020 03:51

Tgt Ion:244 Resp: 10804

Ion	Ratio	Lower	Upper
244	100		
212	9.7	7.3	10.9
122	14.4	7.8	11.6#



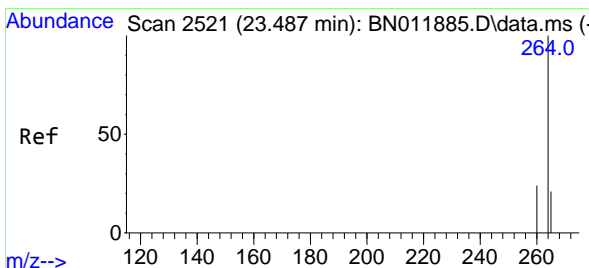
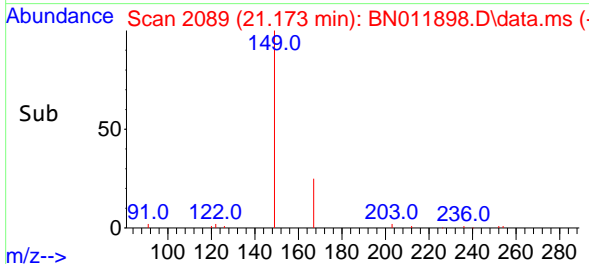
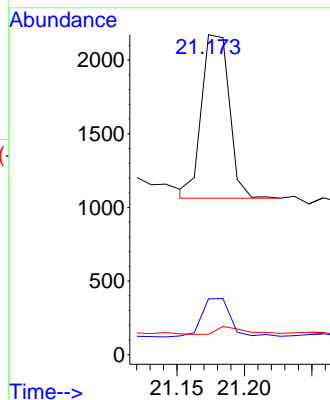
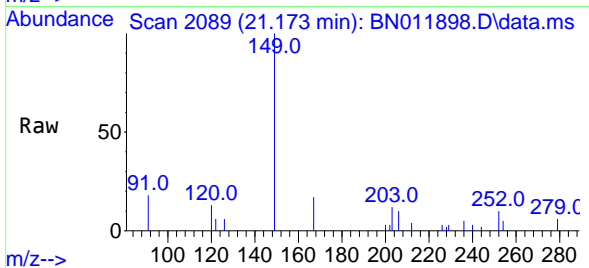


#34
 Bis(2-ethylhexyl)phthalate
 Concen: 0.06 ng
 RT: 21.173 min Scan# 2089
 Delta R.T. -0.011 min
 Lab File: BN011898.D
 Acq: 24 Sep 2020 03:51

Instrument :
 BNA_N
 ClientSampleId :
 RE134D2-20200915

Tgt Ion:149 Resp: 1582

Ion	Ratio	Lower	Upper
149	100		
167	24.7	23.6	35.4
279	5.1	4.0	6.0



#36
 Perylene-d12
 Concen: 0.40 ng
 RT: 23.473 min Scan# 2517
 Delta R.T. -0.014 min
 Lab File: BN011898.D
 Acq: 24 Sep 2020 03:51

Tgt Ion:264 Resp: 11272

Ion	Ratio	Lower	Upper
264	100		
260	24.4	19.6	29.4
265	63.7	38.6	58.0#

