

Data Path : Z:\svoasrv\HPCHEM1\BNA_N\Data\BN092320\
 Data File : BN011903.D
 Acq On : 24 Sep 2020 06:52
 Operator : CG/JU
 Sample : L4083-05
 Misc :
 ALS Vial : 22 Sample Multiplier: 1

Instrument :
 BNA_N
 ClientSampleId :
 RE135D1-20200917

Quant Time: Sep 24 08:14:18 2020
 Quant Method : Z:\svoasrv\HPCHEM1\BNA_N\Methods\8270-SIM-BN092320.M
 Quant Title : ASP BNA STANDARDS FOR 5 POINT CALIBRATION
 QLast Update : Wed Sep 23 18:41:41 2020
 Response via : Initial Calibration

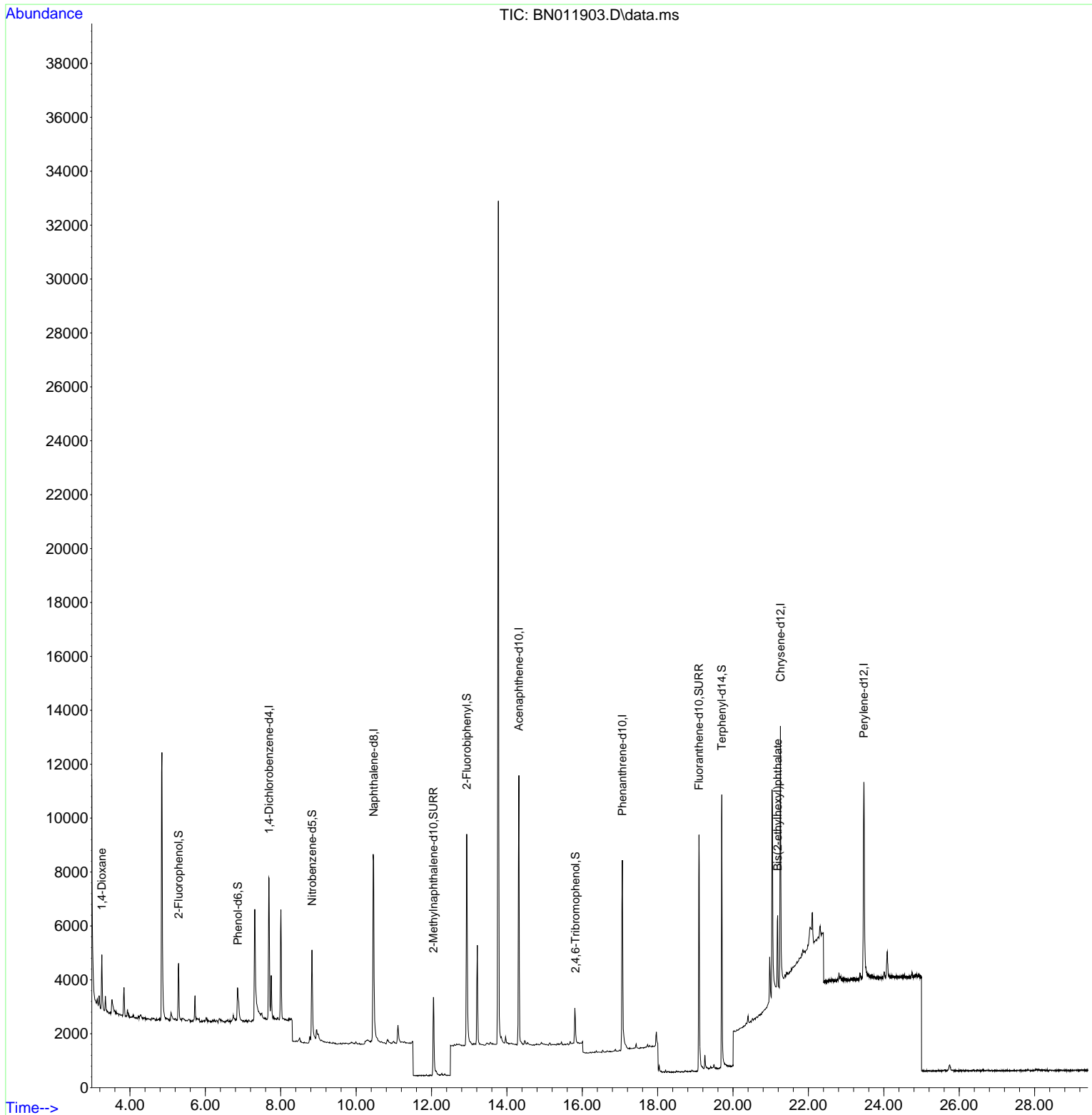
Compound	R.T.	QIon	Response	Conc	Units	Dev(Min)	
Internal Standards							
1) 1,4-Dichlorobenzene-d4	7.691	152	2807	0.40	ng	0.00	
7) Naphthalene-d8	10.466	136	11590	0.40	ng	# 0.00	
13) Acenaphthene-d10	14.319	164	6034	0.40	ng	0.00	
19) Phenanthrene-d10	17.066	188	11906	0.40	ng	0.00	
29) Chrysene-d12	21.259	240	10802	0.40	ng	#-0.01	
36) Perylene-d12	23.470	264	10899	0.40	ng	#-0.02	
System Monitoring Compounds							
4) 2-Fluorophenol	5.291	112	1593	0.16	ng	0.00	
5) Phenol-d6	6.861	99	1108	0.09	ng	0.00	
8) Nitrobenzene-d5	8.831	82	3482	0.29	ng	0.00	
11) 2-Methylnaphthalene-d10	12.051	152	4983	0.27	ng	0.00	
14) 2,4,6-Tribromophenol	15.816	330	1049	0.36	ng	0.00	
15) 2-Fluorobiphenyl	12.936	172	7459	0.33	ng	0.00	
27) Fluoranthene-d10	19.097	212	10685	0.31	ng	0.00	
31) Terphenyl-d14	19.703	244	10646	0.43	ng	0.00	
Target Compounds							Qvalue
2) 1,4-Dioxane	3.253	88	1189	0.24	ng	#	89
34) Bis(2-ethylhexyl)phtha...	21.184	149	2996	0.12	ng	#	88

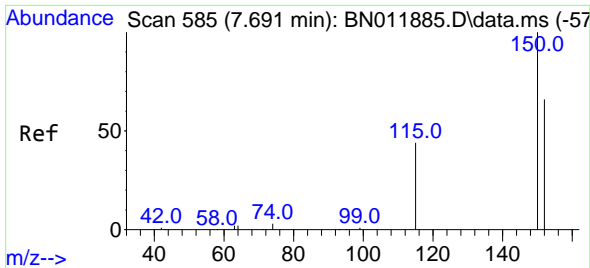
(#) = qualifier out of range (m) = manual integration (+) = signals summed

Data Path : Z:\svoasrv\HPCHEM1\BNA_N\Data\BN092320\
 Data File : BN011903.D
 Acq On : 24 Sep 2020 06:52
 Operator : CG/JU
 Sample : L4083-05
 Misc :
 ALS Vial : 22 Sample Multiplier: 1

Instrument :
 BNA_N
 ClientSampleId :
 RE135D1-20200917

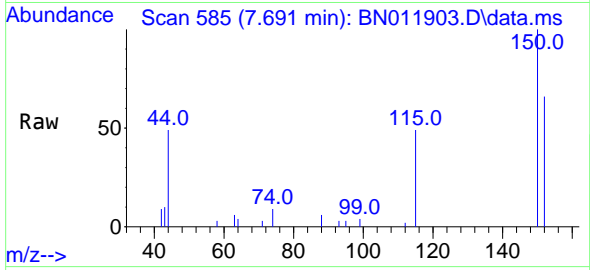
Quant Time: Sep 24 08:14:18 2020
 Quant Method : Z:\svoasrv\HPCHEM1\BNA_N\Methods\8270-SIM-BN092320.M
 Quant Title : ASP BNA STANDARDS FOR 5 POINT CALIBRATION
 QLast Update : Wed Sep 23 18:41:41 2020
 Response via : Initial Calibration



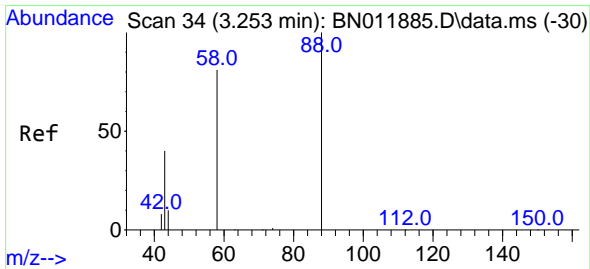
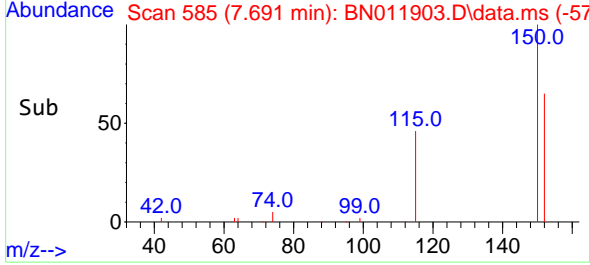
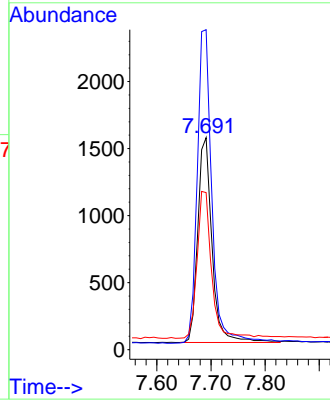


#1
 1,4-Dichlorobenzene-d4
 Concen: 0.40 ng
 RT: 7.691 min Scan# 585
 Delta R.T. -0.000 min
 Lab File: BN011903.D
 Acq: 24 Sep 2020 06:52

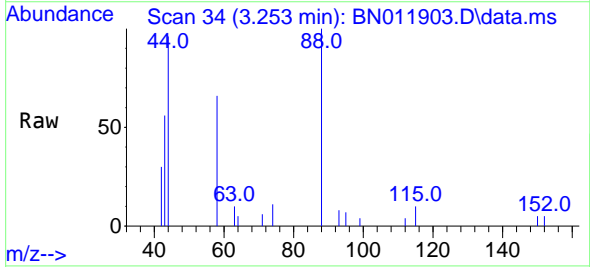
Instrument :
 BNA_N
 ClientSampled :
 RE135D1-20200917



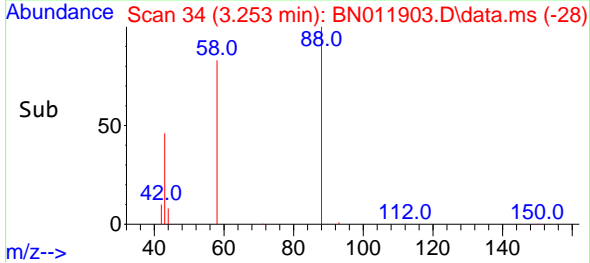
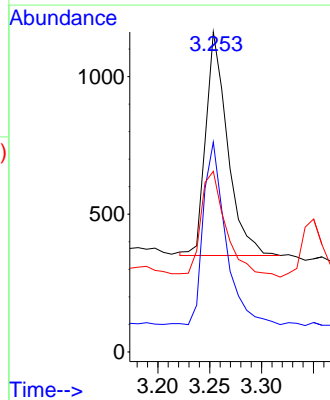
Tgt Ion:152 Resp: 2807
 Ion Ratio Lower Upper
 152 100
 150 151.0 118.3 177.5
 115 74.1 51.3 76.9

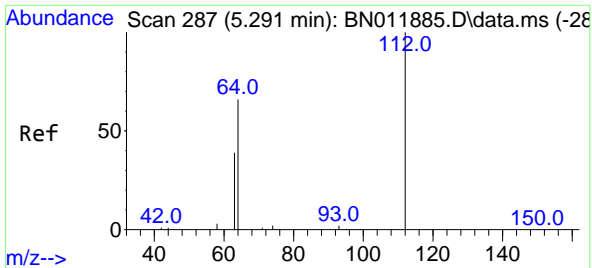


#2
 1,4-Dioxane
 Concen: 0.24 ng
 RT: 3.253 min Scan# 34
 Delta R.T. 0.000 min
 Lab File: BN011903.D
 Acq: 24 Sep 2020 06:52



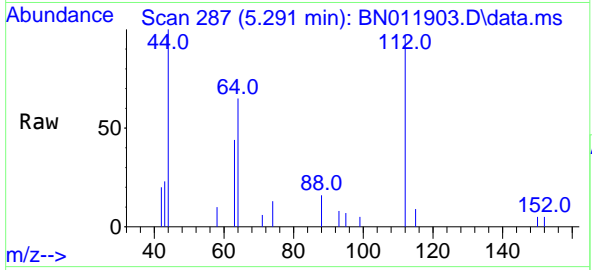
Tgt Ion: 88 Resp: 1189
 Ion Ratio Lower Upper
 88 100
 58 83.8 63.3 94.9
 43 55.3 33.0 49.4#





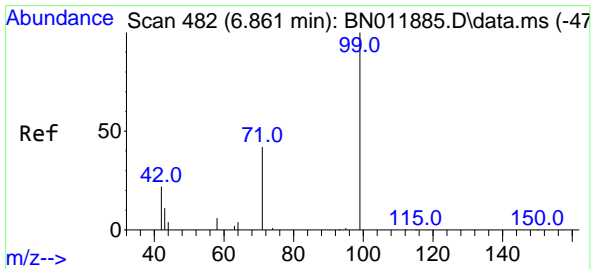
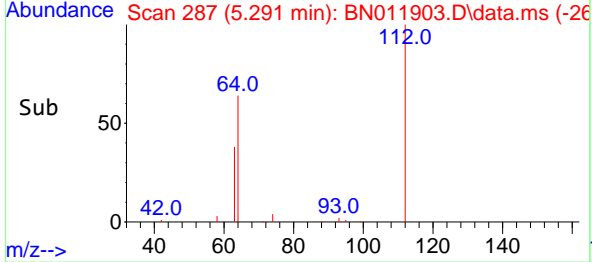
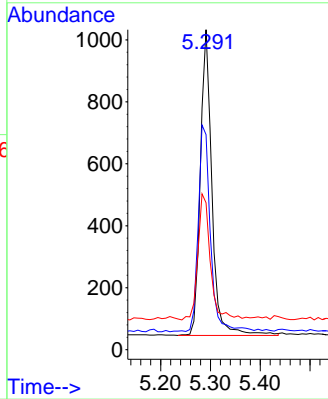
#4
 2-Fluorophenol
 Concen: 0.16 ng
 RT: 5.291 min Scan# 287
 Delta R.T. 0.000 min
 Lab File: BN011903.D
 Acq: 24 Sep 2020 06:52

Instrument :
 BNA_N
ClientSampled :
 RE135D1-20200917

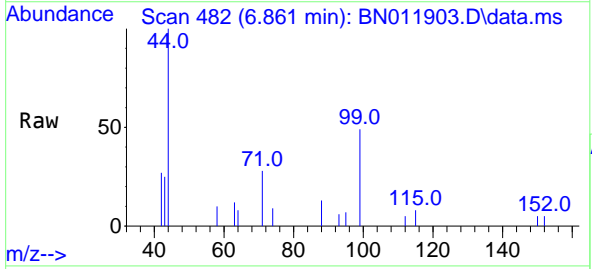


Tgt Ion: 112 Resp: 1593

Ion	Ratio	Lower	Upper
112	100		
64	71.0	49.0	73.6
63	44.8	31.8	47.6

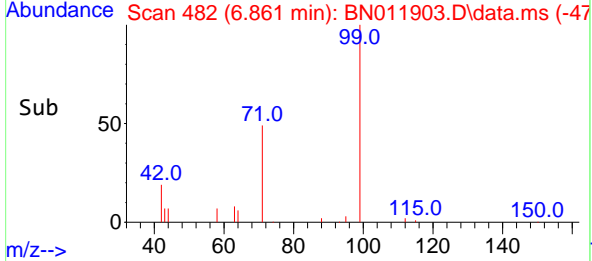
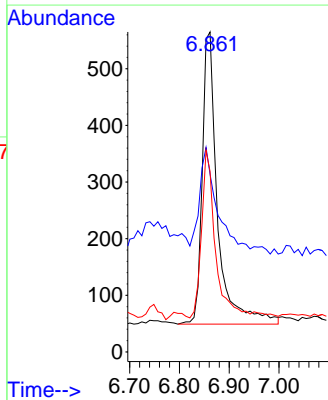


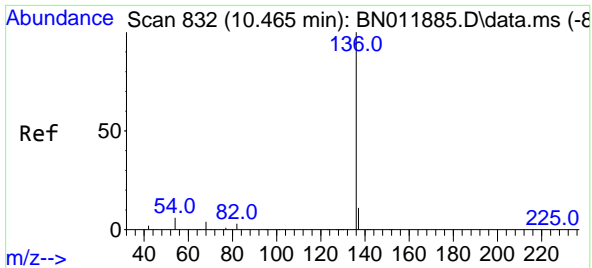
#5
 Phenol-d6
 Concen: 0.09 ng
 RT: 6.861 min Scan# 482
 Delta R.T. 0.000 min
 Lab File: BN011903.D
 Acq: 24 Sep 2020 06:52



Tgt Ion: 99 Resp: 1108

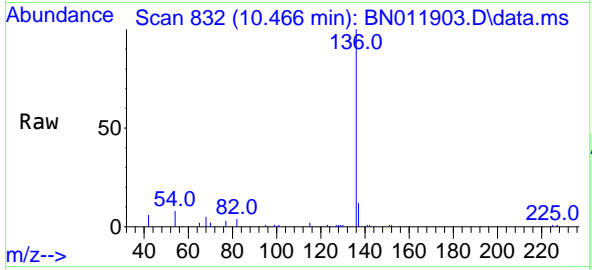
Ion	Ratio	Lower	Upper
99	100		
42	37.1	23.4	35.0
71	51.4	38.1	57.1





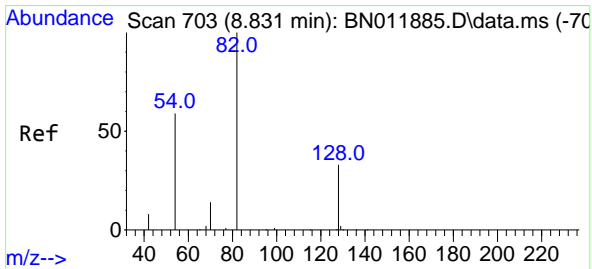
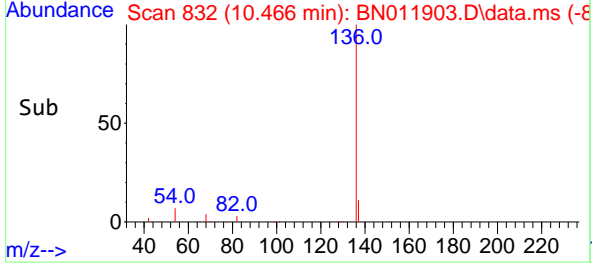
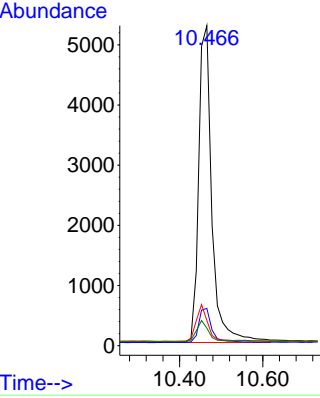
#7
 Naphthalene-d8
 Concen: 0.40 ng
 RT: 10.466 min Scan# 832
 Delta R.T. 0.000 min
 Lab File: BN011903.D
 Acq: 24 Sep 2020 06:52

Instrument :
 BNA_N
ClientSampleId :
 RE135D1-20200917

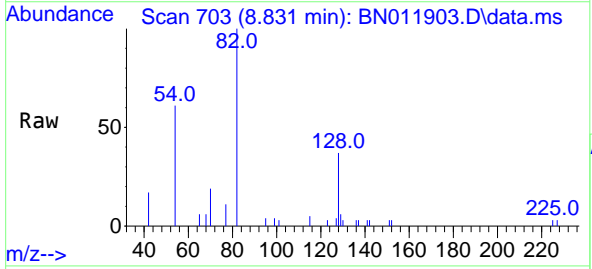


Tgt Ion: 136 Resp: 11590

Ion	Ratio	Lower	Upper
136	100		
137	11.7	9.5	14.3
54	7.9	5.6	8.4
68	5.5	3.2	4.8

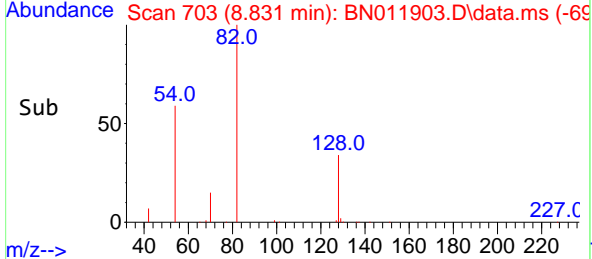
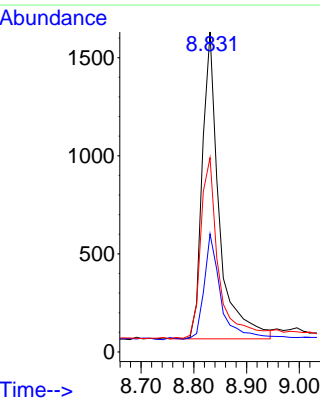


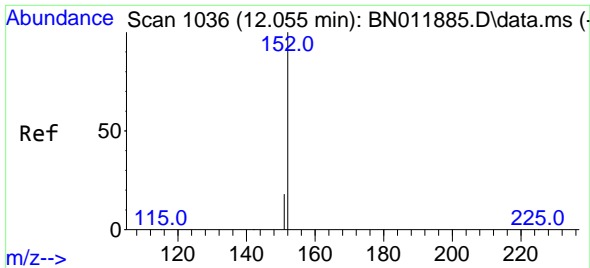
#8
 Nitrobenzene-d5
 Concen: 0.29 ng
 RT: 8.831 min Scan# 703
 Delta R.T. 0.000 min
 Lab File: BN011903.D
 Acq: 24 Sep 2020 06:52



Tgt Ion: 82 Resp: 3482

Ion	Ratio	Lower	Upper
82	100		
128	36.9	34.2	51.2
54	60.7	43.1	64.7

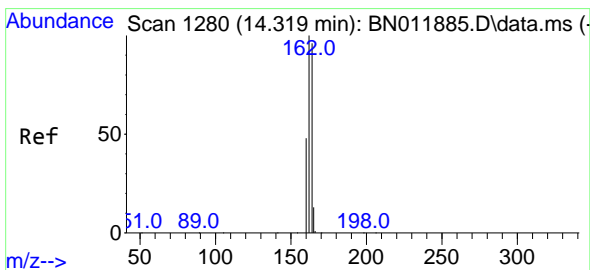
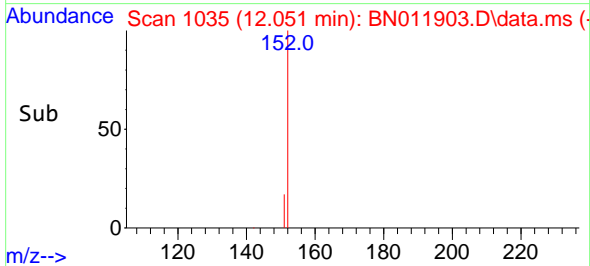
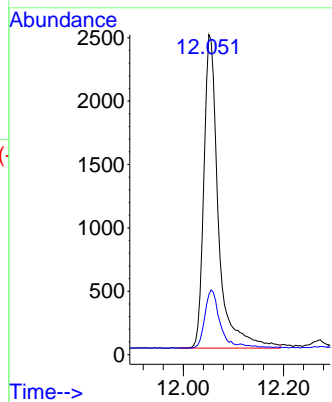
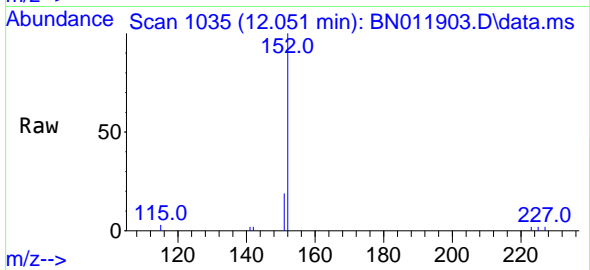




#11
 2-Methylnaphthalene-d10
 Concen: 0.27 ng
 RT: 12.051 min Scan# 1035
 Delta R.T. -0.004 min
 Lab File: BN011903.D
 Acq: 24 Sep 2020 06:52

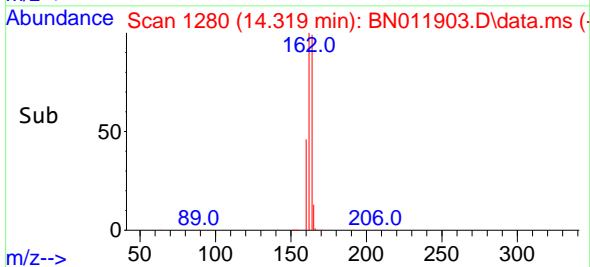
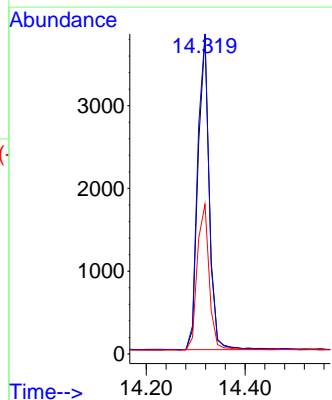
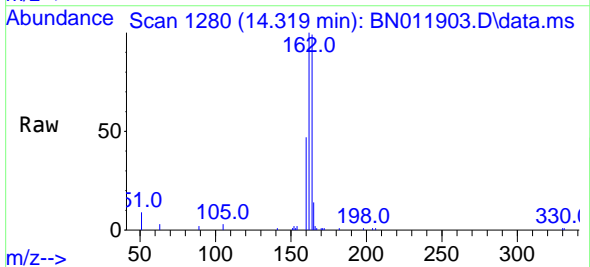
Instrument :
 BNA_N
 ClientSampleId :
 RE135D1-20200917

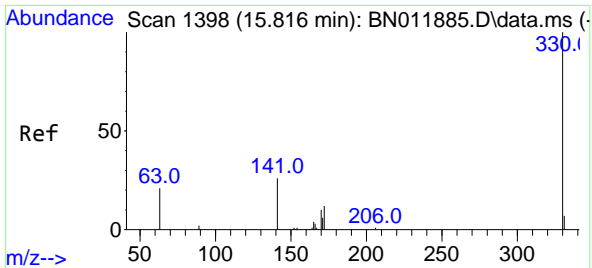
Tgt Ion:152 Resp: 4983
 Ion Ratio Lower Upper
 152 100
 151 18.8 16.7 25.1



#13
 Acenaphthene-d10
 Concen: 0.40 ng
 RT: 14.319 min Scan# 1280
 Delta R.T. 0.000 min
 Lab File: BN011903.D
 Acq: 24 Sep 2020 06:52

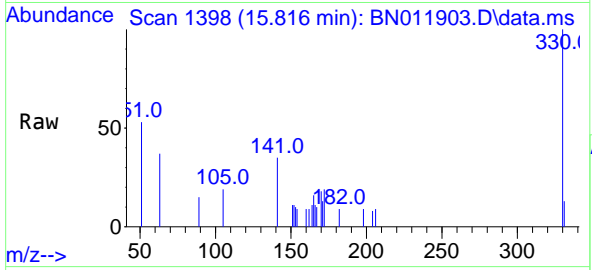
Tgt Ion:164 Resp: 6034
 Ion Ratio Lower Upper
 164 100
 162 100.7 83.6 125.4
 160 47.1 41.2 61.8



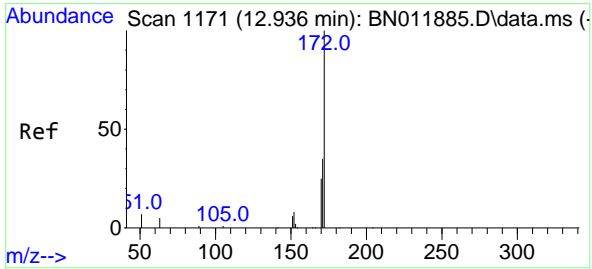
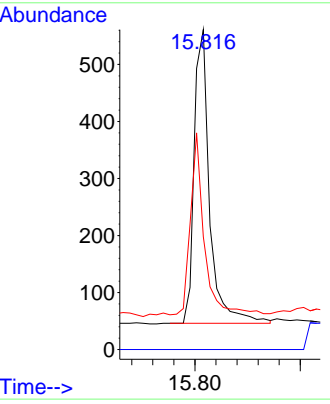
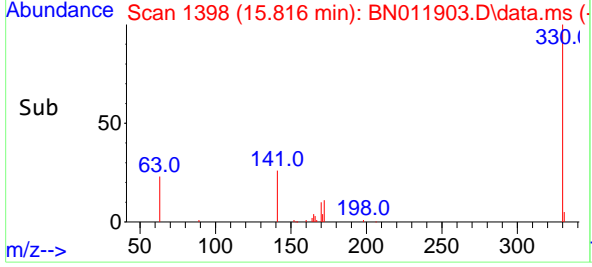


#14
 2,4,6-Tribromophenol
 Concen: 0.36 ng
 RT: 15.816 min Scan# 1398
 Delta R.T. 0.000 min
 Lab File: BN011903.D
 Acq: 24 Sep 2020 06:52

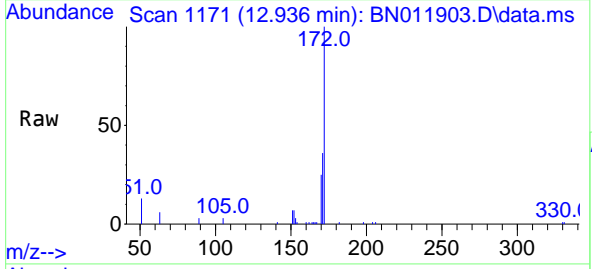
Instrument :
 BNA_N
 ClientSampleId :
 RE135D1-20200917



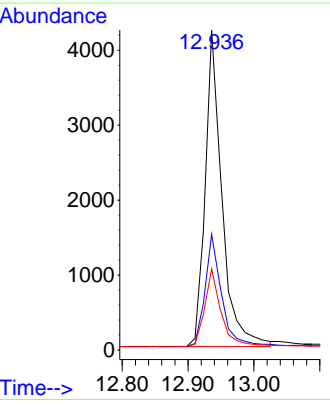
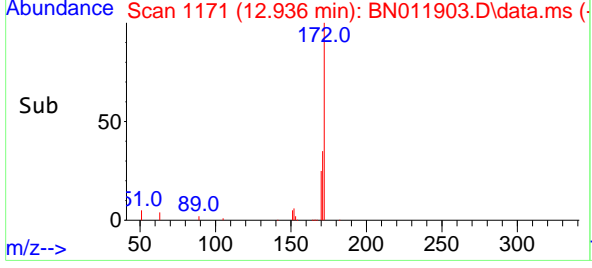
Tgt Ion:330 Resp: 1049
 Ion Ratio Lower Upper
 330 100
 332 0.0 0.0 0.0
 141 54.9 33.7 50.5#

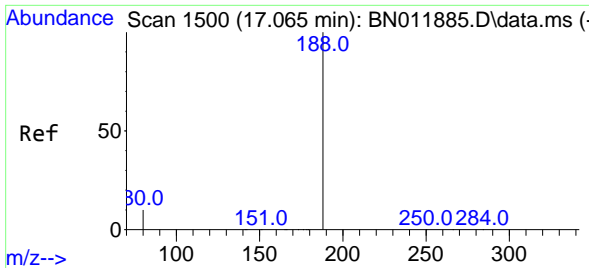


#15
 2-Fluorobiphenyl
 Concen: 0.33 ng
 RT: 12.936 min Scan# 1171
 Delta R.T. 0.000 min
 Lab File: BN011903.D
 Acq: 24 Sep 2020 06:52



Tgt Ion:172 Resp: 7459
 Ion Ratio Lower Upper
 172 100
 171 36.2 27.4 41.2
 170 25.3 17.8 26.6

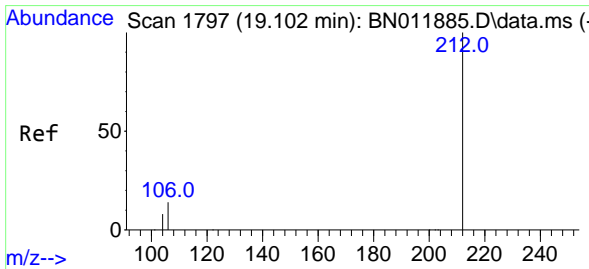
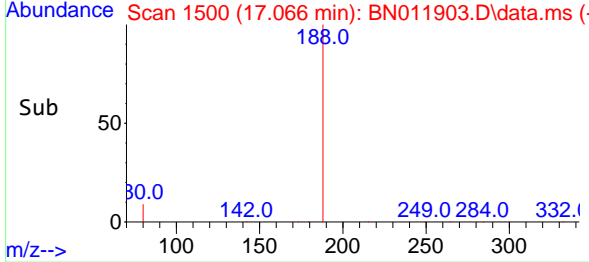
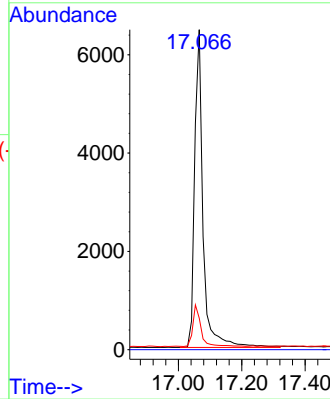
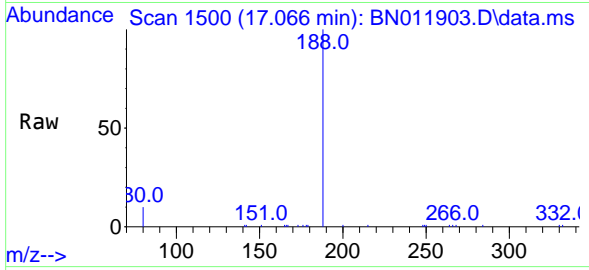




#19
 Phenanthrene-d10
 Concen: 0.40 ng
 RT: 17.066 min Scan# 1500
 Delta R.T. 0.000 min
 Lab File: BN011903.D
 Acq: 24 Sep 2020 06:52

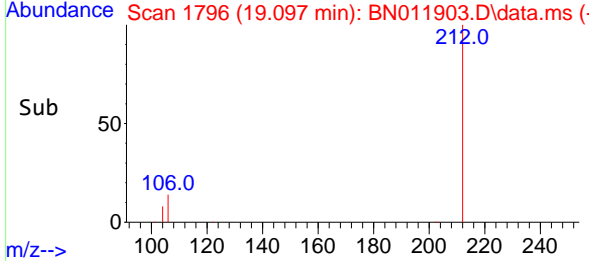
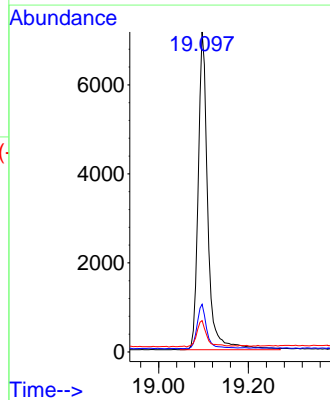
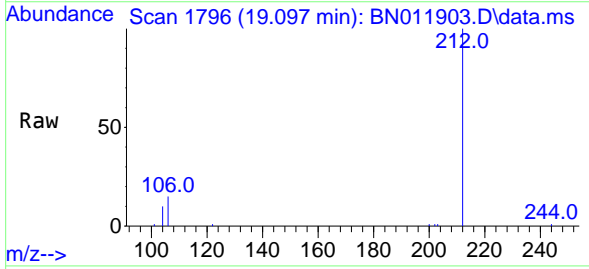
Instrument :
 BNA_N
ClientSampleId :
 RE135D1-20200917

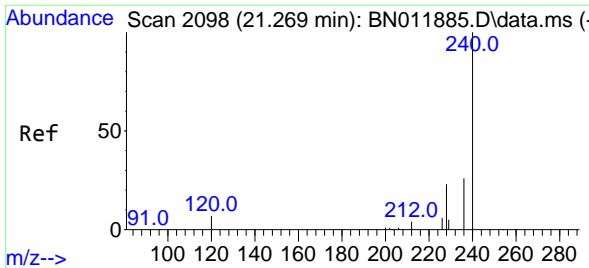
Tgt Ion	Resp	Lower	Upper
188	100		
94	0.0	0.0	0.0
80	9.9	7.7	11.5



#27
 Fluoranthene-d10
 Concen: 0.31 ng
 RT: 19.097 min Scan# 1796
 Delta R.T. -0.005 min
 Lab File: BN011903.D
 Acq: 24 Sep 2020 06:52

Tgt Ion	Resp	Lower	Upper
212	100		
106	14.0	6.4	9.6#
104	8.6	3.9	5.9#



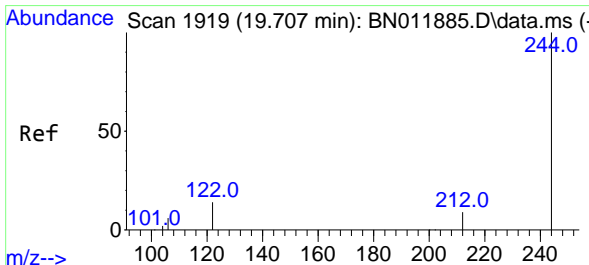
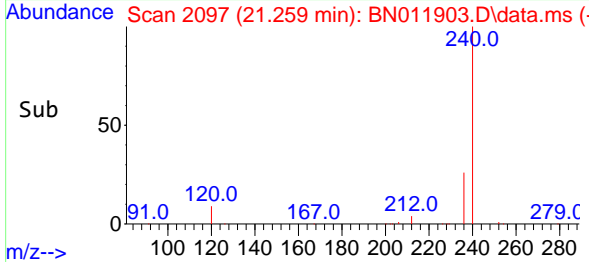
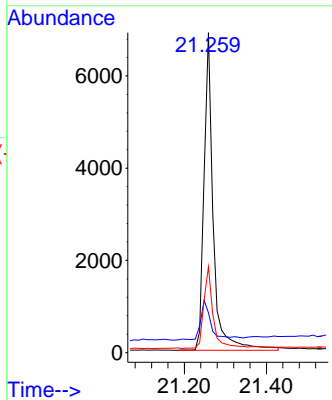
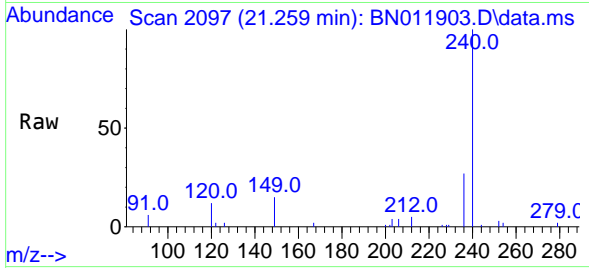


#29
 Chrysene-d12
 Concen: 0.40 ng
 RT: 21.259 min Scan# 2097
 Delta R.T. -0.011 min
 Lab File: BN011903.D
 Acq: 24 Sep 2020 06:52

Instrument :
 BNA_N
ClientSampled :
 RE135D1-20200917

Tgt Ion:240 Resp: 10802

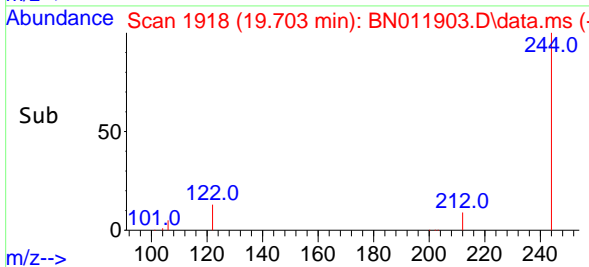
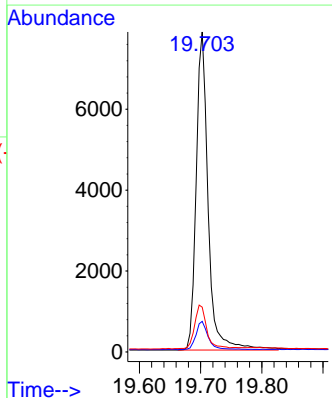
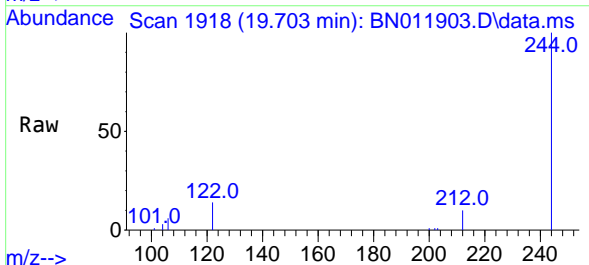
Ion	Ratio	Lower	Upper
240	100		
120	12.5	3.5	5.3#
236	26.8	20.5	30.7

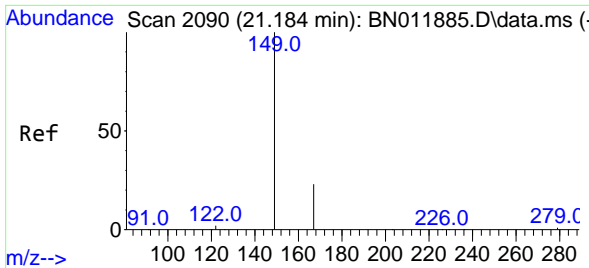


#31
 Terphenyl-d14
 Concen: 0.43 ng
 RT: 19.703 min Scan# 1918
 Delta R.T. -0.005 min
 Lab File: BN011903.D
 Acq: 24 Sep 2020 06:52

Tgt Ion:244 Resp: 10646

Ion	Ratio	Lower	Upper
244	100		
212	9.5	7.3	10.9
122	14.0	7.8	11.6#



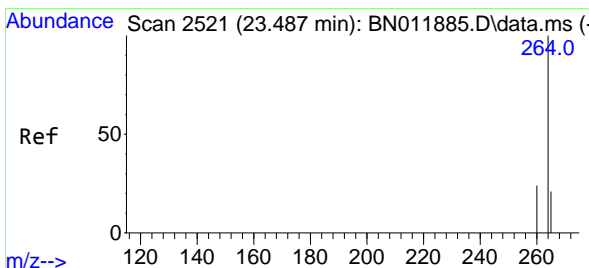
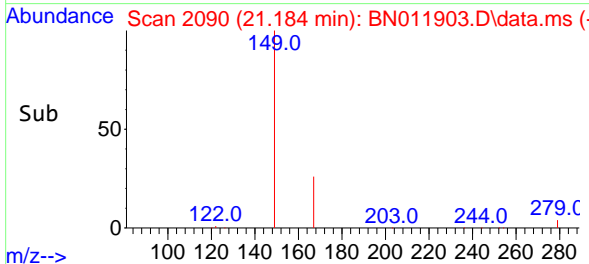
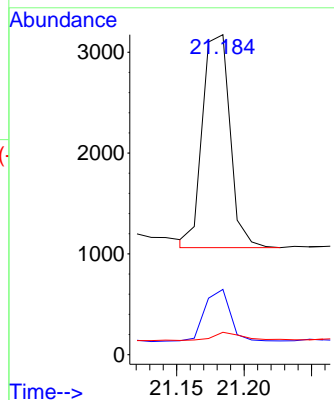
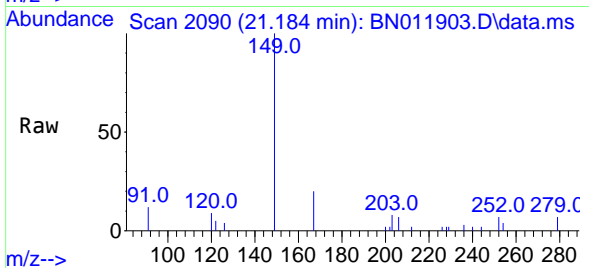


#34
 Bis(2-ethylhexyl)phthalate
 Concen: 0.12 ng
 RT: 21.184 min Scan# 2090
 Delta R.T. 0.000 min
 Lab File: BN011903.D
 Acq: 24 Sep 2020 06:52

Instrument :
 BNA_N
 ClientSampleId :
 RE135D1-20200917

Tgt Ion:149 Resp: 2996

Ion	Ratio	Lower	Upper
149	100		
167	22.2	23.6	35.4#
279	4.0	4.0	6.0#



#36
 Perylene-d12
 Concen: 0.40 ng
 RT: 23.470 min Scan# 2516
 Delta R.T. -0.017 min
 Lab File: BN011903.D
 Acq: 24 Sep 2020 06:52

Tgt Ion:264 Resp: 10899

Ion	Ratio	Lower	Upper
264	100		
260	24.2	19.6	29.4
265	64.2	38.6	58.0#

