

Data Path : Z:\svoasrv\HPCHEM1\BNA_N\Data\BN092420\
 Data File : BN011936.D
 Acq On : 25 Sep 2020 05:53
 Operator : CG/JU
 Sample : L4083-01DL 2X
 Misc :
 ALS Vial : 27 Sample Multiplier: 1

Instrument :
 BNA_N
 ClientSampleId :
 RE120D1-20200916DL

Quant Time: Sep 25 07:40:55 2020
 Quant Method : Z:\svoasrv\HPCHEM1\BNA_N\Methods\8270-SIM-BN092320.M
 Quant Title : ASP BNA STANDARDS FOR 5 POINT CALIBRATION
 QLast Update : Wed Sep 23 18:41:41 2020
 Response via : Initial Calibration

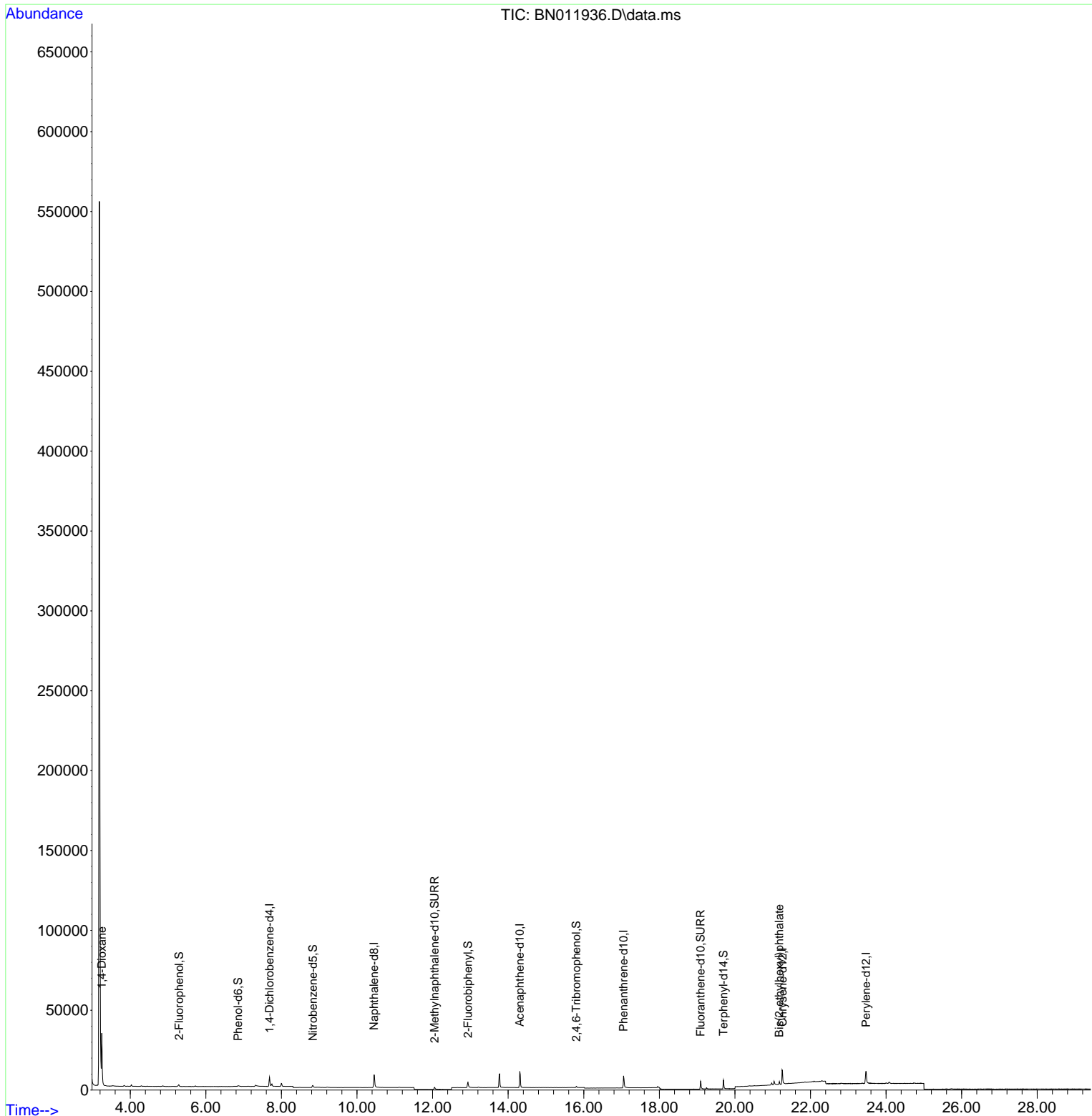
Compound	R.T.	QIon	Response	Conc	Units	Dev(Min)	
Internal Standards							
1) 1,4-Dichlorobenzene-d4	7.683	152	2818	0.40	ng	0.00	
7) Naphthalene-d8	10.453	136	12099	0.40	ng	#-0.01	
13) Acenaphthene-d10	14.306	164	6572	0.40	ng	-0.01	
19) Phenanthrene-d10	17.053	188	12901	0.40	ng	#-0.01	
29) Chrysene-d12	21.259	240	11576	0.40	ng	#-0.01	
36) Perylene-d12	23.467	264	11610	0.40	ng	#-0.02	
System Monitoring Compounds							
4) 2-Fluorophenol	5.291	112	756	0.08	ng	0.00	
5) Phenol-d6	6.853	99	452	0.04	ng	0.00	
8) Nitrobenzene-d5	8.831	82	1531	0.12	ng	0.00	
11) 2-Methylnaphthalene-d10	12.051	152	2441	0.13	ng	0.00	
14) 2,4,6-Tribromophenol	15.803	330	589	0.18	ng	-0.01	
15) 2-Fluorobiphenyl	12.936	172	3506	0.14	ng	0.00	
27) Fluoranthene-d10	19.092	212	6144	0.16	ng	0.00	
31) Terphenyl-d14	19.698	244	6251	0.24	ng	0.00	
Target Compounds							Qvalue
2) 1,4-Dioxane	3.245	88	16531	3.37	ng		96
34) Bis(2-ethylhexyl)phtha...	21.174	149	1626	0.06	ng	#	93

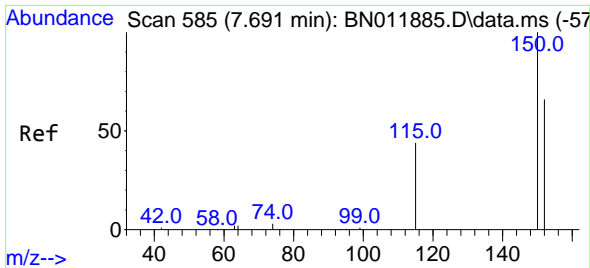
(#) = qualifier out of range (m) = manual integration (+) = signals summed

Data Path : Z:\svoasrv\HPCHEM1\BNA_N\Data\BN092420\
 Data File : BN011936.D
 Acq On : 25 Sep 2020 05:53
 Operator : CG/JU
 Sample : L4083-01DL 2X
 Misc :
 ALS Vial : 27 Sample Multiplier: 1

Instrument :
 BNA_N
ClientSampleId :
 RE120D1-20200916DL

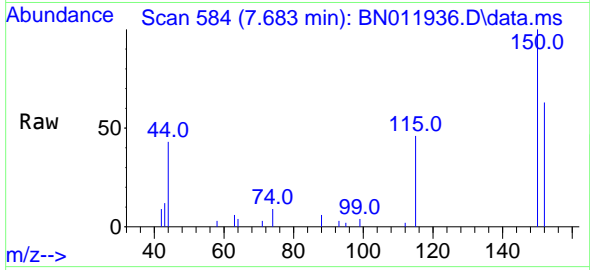
Quant Time: Sep 25 07:40:55 2020
 Quant Method : Z:\svoasrv\HPCHEM1\BNA_N\Methods\8270-SIM-BN092320.M
 Quant Title : ASP BNA STANDARDS FOR 5 POINT CALIBRATION
 QLast Update : Wed Sep 23 18:41:41 2020
 Response via : Initial Calibration



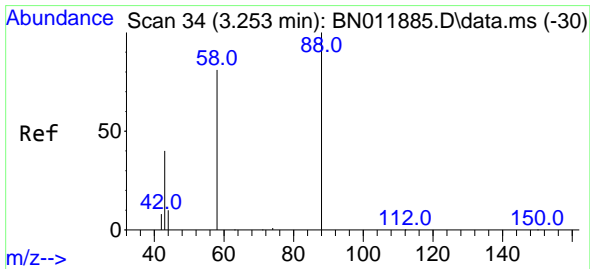
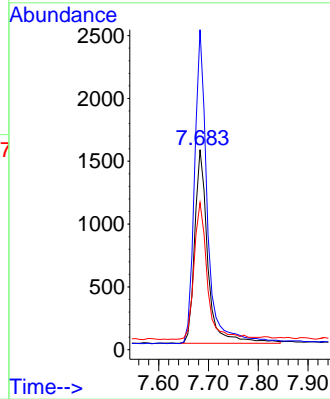
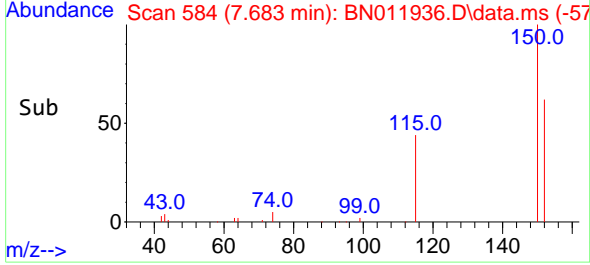


#1
 1,4-Dichlorobenzene-d4
 Concen: 0.40 ng
 RT: 7.683 min Scan# 584
 Delta R.T. -0.008 min
 Lab File: BN011936.D
 Acq: 25 Sep 2020 05:53

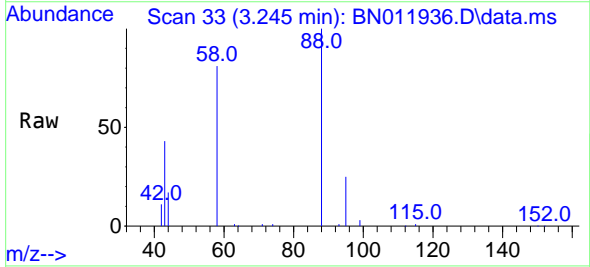
Instrument :
 BNA_N
ClientSampled :
 RE120D1-20200916DL



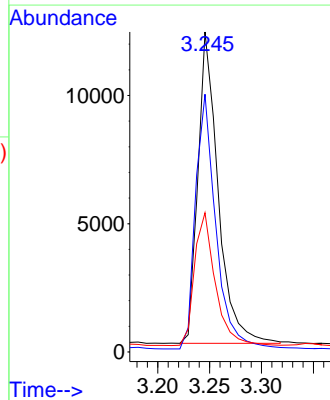
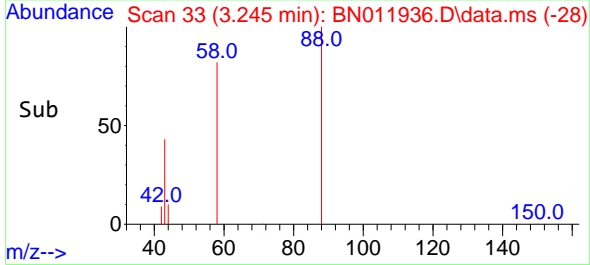
Tgt Ion:152 Resp: 2818
 Ion Ratio Lower Upper
 152 100
 150 160.0 118.3 177.5
 115 73.6 51.3 76.9

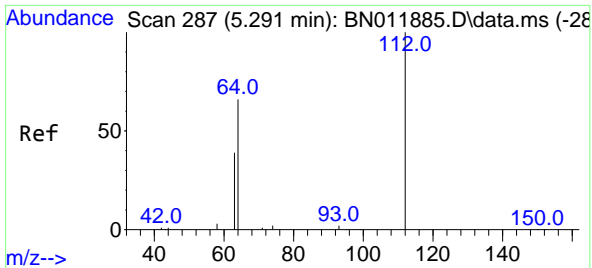


#2
 1,4-Dioxane
 Concen: 3.37 ng
 RT: 3.245 min Scan# 33
 Delta R.T. -0.008 min
 Lab File: BN011936.D
 Acq: 25 Sep 2020 05:53



Tgt Ion: 88 Resp: 16531
 Ion Ratio Lower Upper
 88 100
 58 82.5 63.3 94.9
 43 43.7 33.0 49.4



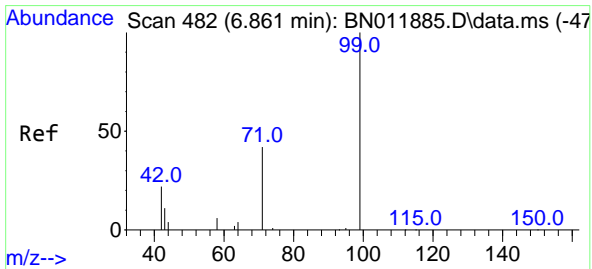
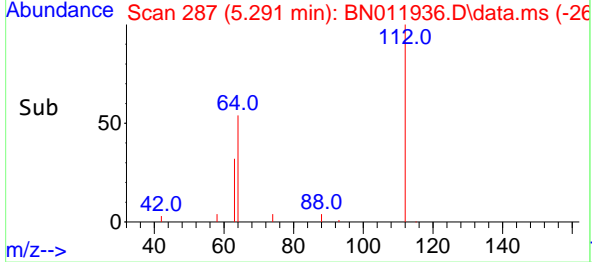
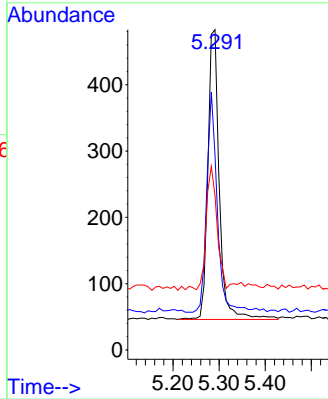
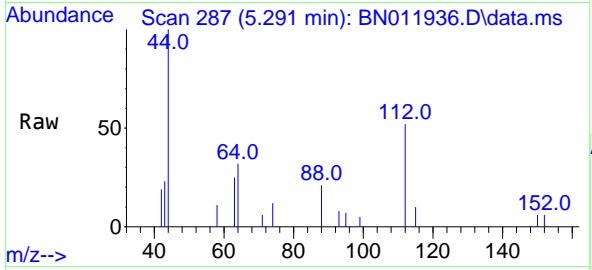


#4
 2-Fluorophenol
 Concen: 0.08 ng
 RT: 5.291 min Scan# 287
 Delta R.T. 0.000 min
 Lab File: BN011936.D
 Acq: 25 Sep 2020 05:53

Instrument :
 BNA_N
 ClientSampleId :
 RE120D1-20200916DL

Tgt Ion: 112 Resp: 756

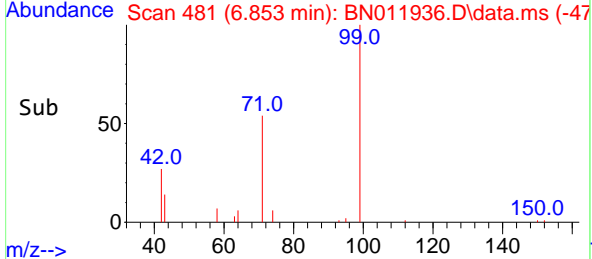
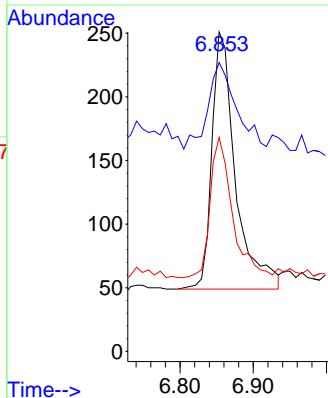
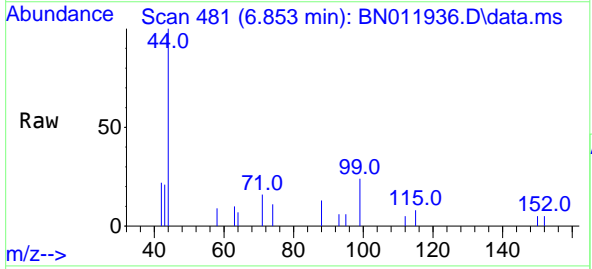
Ion	Ratio	Lower	Upper
112	100		
64	69.7	49.0	73.6
63	41.9	31.8	47.6

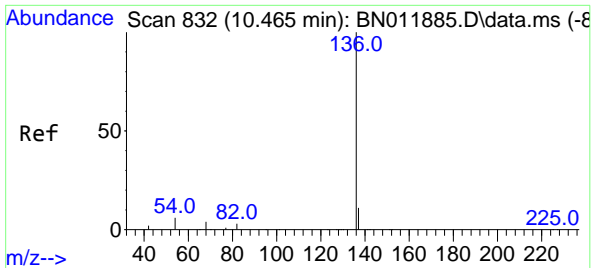


#5
 Phenol-d6
 Concen: 0.04 ng
 RT: 6.853 min Scan# 481
 Delta R.T. -0.008 min
 Lab File: BN011936.D
 Acq: 25 Sep 2020 05:53

Tgt Ion: 99 Resp: 452

Ion	Ratio	Lower	Upper
99	100		
42	42.3	23.4	35.0
71	51.1	38.1	57.1



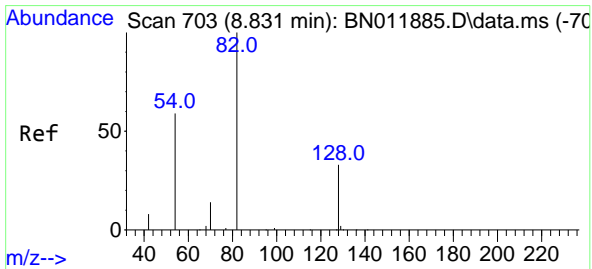
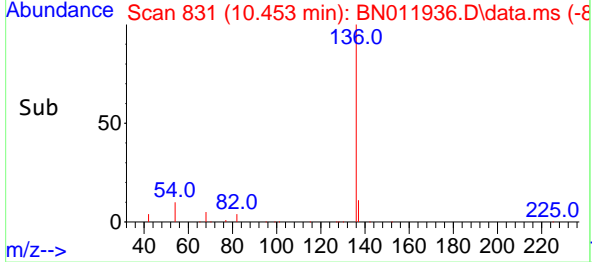
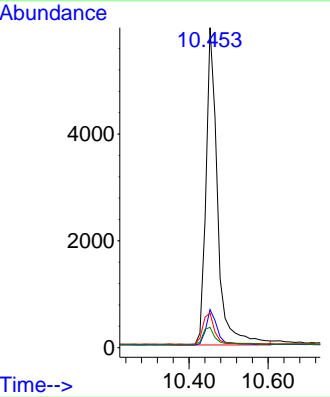
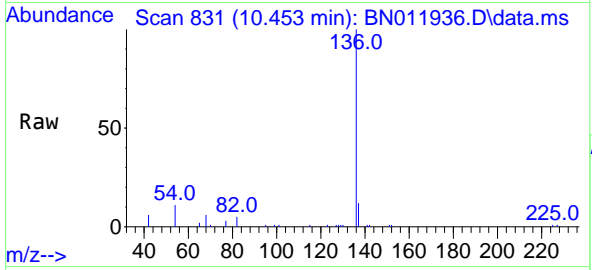


#7
 Naphthalene-d8
 Concen: 0.40 ng
 RT: 10.453 min Scan# 831
 Delta R.T. -0.012 min
 Lab File: BN011936.D
 Acq: 25 Sep 2020 05:53

Instrument :
 BNA_N
 ClientSampleId :
 RE120D1-20200916DL

Tgt Ion:136 Resp: 12099

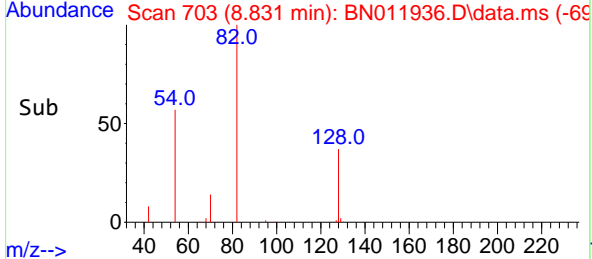
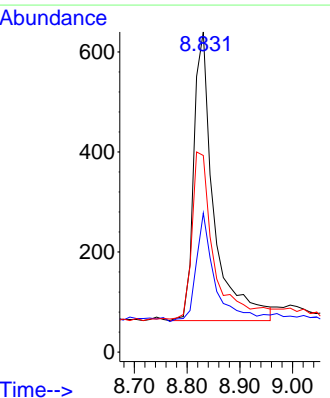
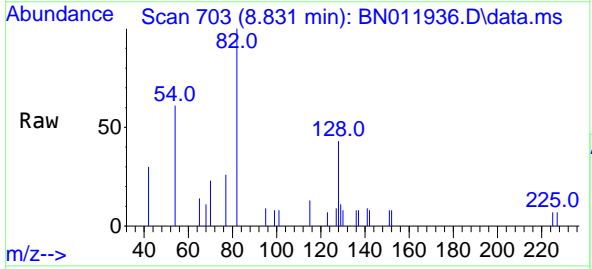
Ion	Ratio	Lower	Upper
136	100		
137	11.9	9.5	14.3
54	10.8	5.6	8.4#
68	6.4	3.2	4.8#

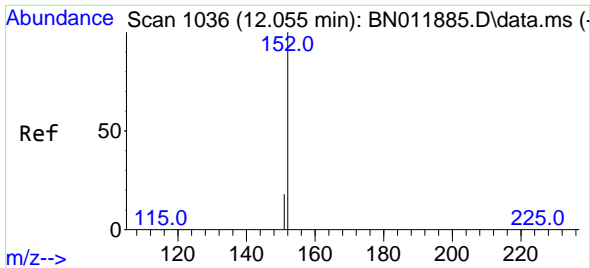


#8
 Nitrobenzene-d5
 Concen: 0.12 ng
 RT: 8.831 min Scan# 703
 Delta R.T. 0.000 min
 Lab File: BN011936.D
 Acq: 25 Sep 2020 05:53

Tgt Ion: 82 Resp: 1531

Ion	Ratio	Lower	Upper
82	100		
128	43.4	34.2	51.2
54	61.4	43.1	64.7

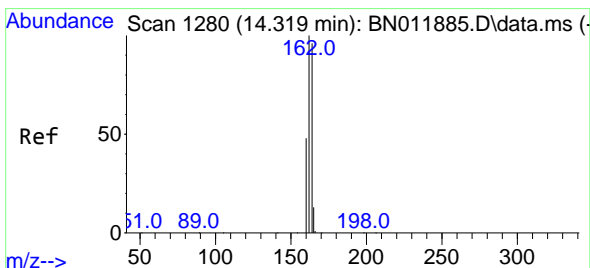
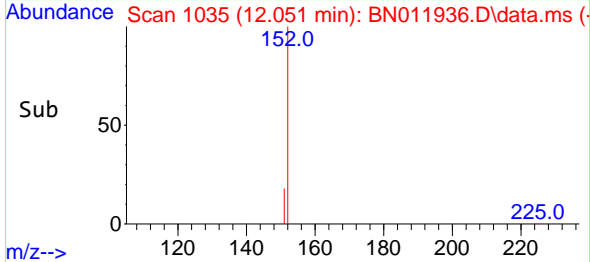
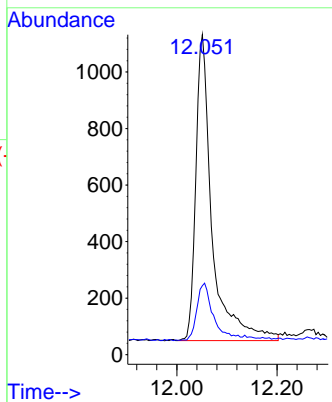
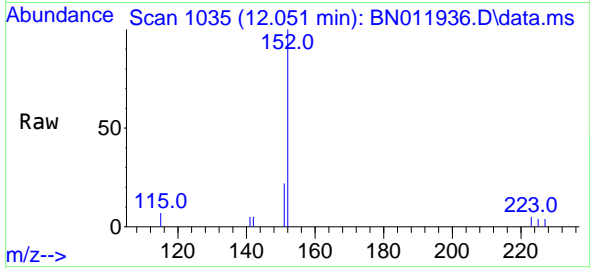




#11
 2-Methylnaphthalene-d10
 Concen: 0.13 ng
 RT: 12.051 min Scan# 1035
 Delta R.T. -0.004 min
 Lab File: BN011936.D
 Acq: 25 Sep 2020 05:53

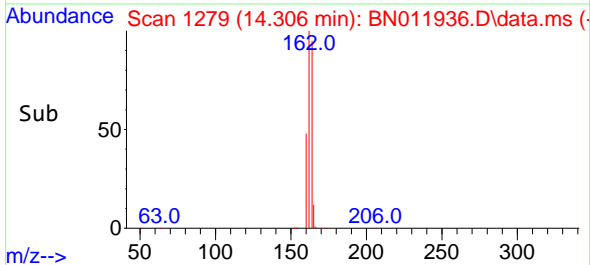
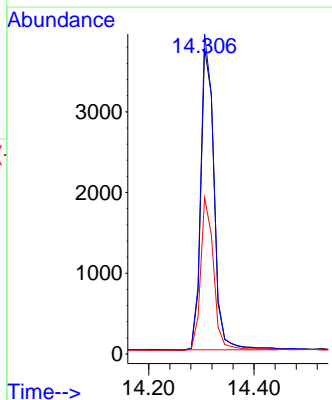
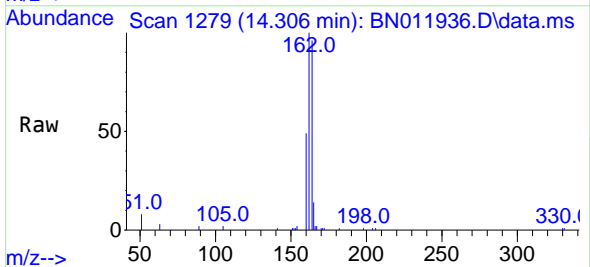
Instrument :
 BNA_N
 ClientSampled :
 RE120D1-20200916DL

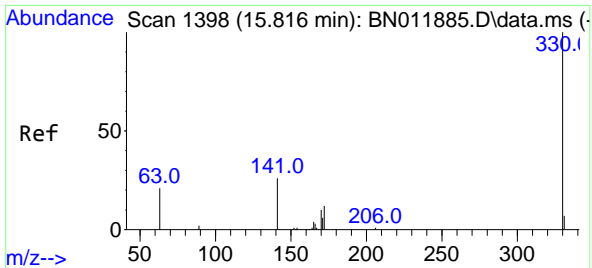
Tgt Ion:152 Resp: 2441
 Ion Ratio Lower Upper
 152 100
 151 19.3 16.7 25.1



#13
 Acenaphthene-d10
 Concen: 0.40 ng
 RT: 14.306 min Scan# 1279
 Delta R.T. -0.012 min
 Lab File: BN011936.D
 Acq: 25 Sep 2020 05:53

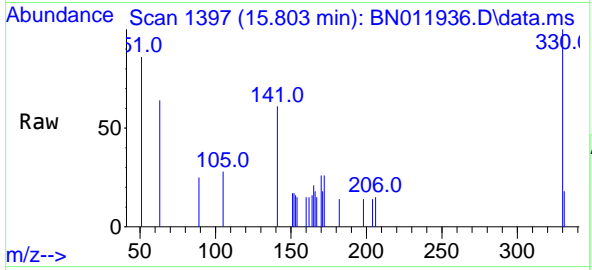
Tgt Ion:164 Resp: 6572
 Ion Ratio Lower Upper
 164 100
 162 104.6 83.6 125.4
 160 51.1 41.2 61.8





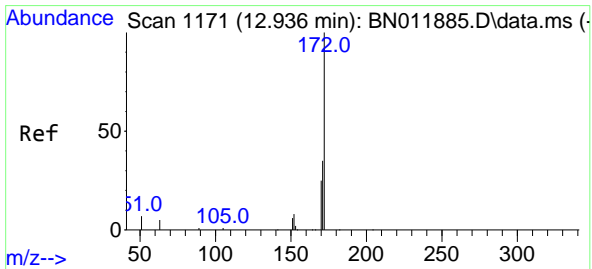
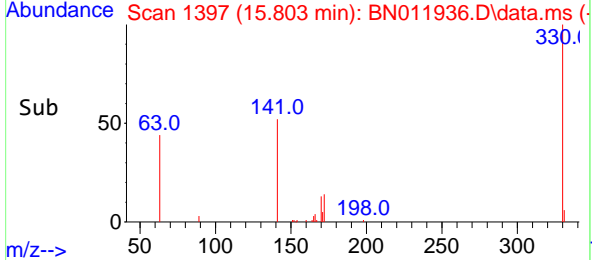
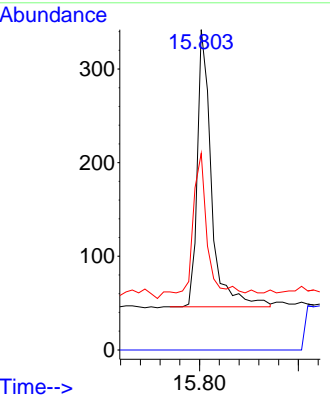
#14
 2,4,6-Tribromophenol
 Concen: 0.18 ng
 RT: 15.803 min Scan# 1397
 Delta R.T. -0.013 min
 Lab File: BN011936.D
 Acq: 25 Sep 2020 05:53

Instrument :
 BNA_N
ClientSampled :
 RE120D1-20200916DL

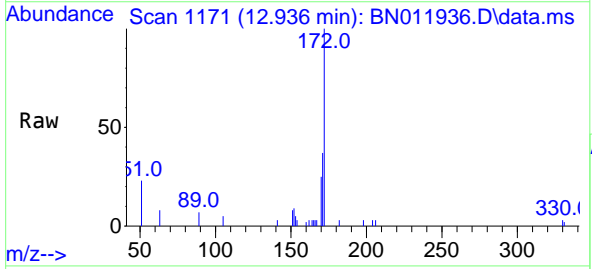


Tgt Ion: 330 Resp: 589

Ion	Ratio	Lower	Upper
330	100		
332	0.0	0.0	0.0
141	46.3	33.7	50.5

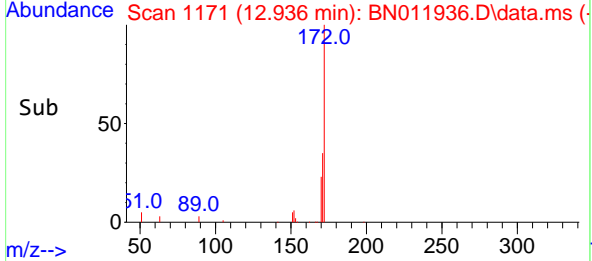
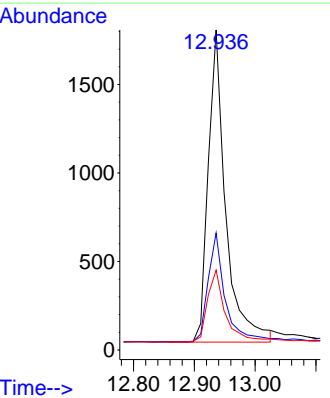


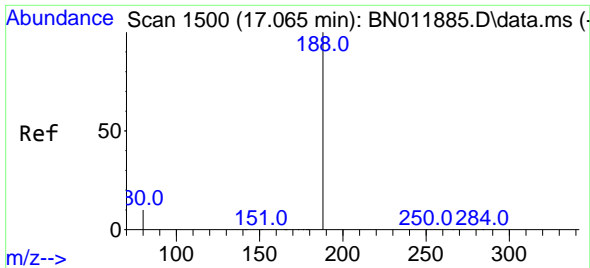
#15
 2-Fluorobiphenyl
 Concen: 0.14 ng
 RT: 12.936 min Scan# 1171
 Delta R.T. 0.000 min
 Lab File: BN011936.D
 Acq: 25 Sep 2020 05:53



Tgt Ion: 172 Resp: 3506

Ion	Ratio	Lower	Upper
172	100		
171	36.6	27.4	41.2
170	24.9	17.8	26.6



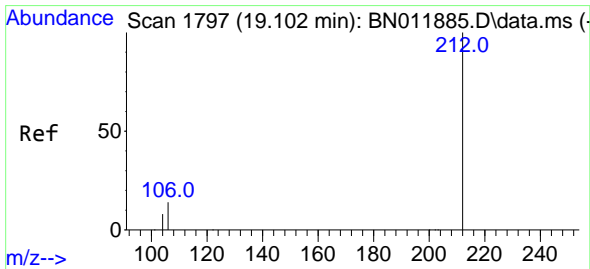
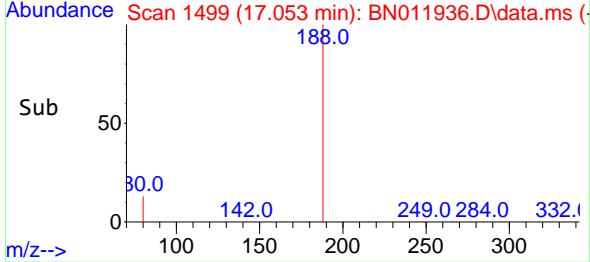
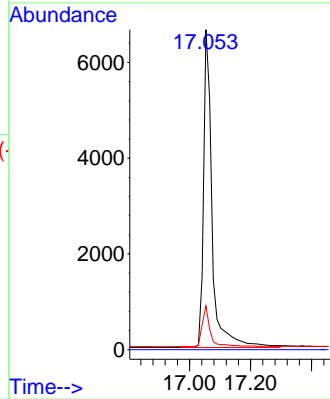
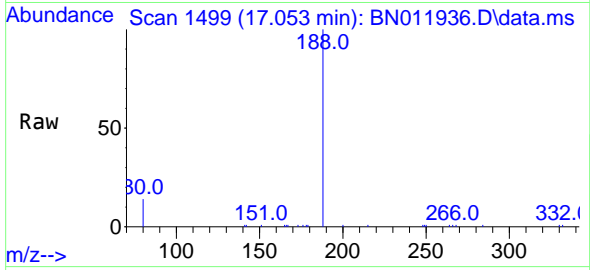


#19
 Phenanthrene-d10
 Concen: 0.40 ng
 RT: 17.053 min Scan# 1499
 Delta R.T. -0.012 min
 Lab File: BN011936.D
 Acq: 25 Sep 2020 05:53

Instrument :
 BNA_N
 ClientSampleId :
 RE120D1-20200916DL

Tgt Ion:188 Resp: 12901

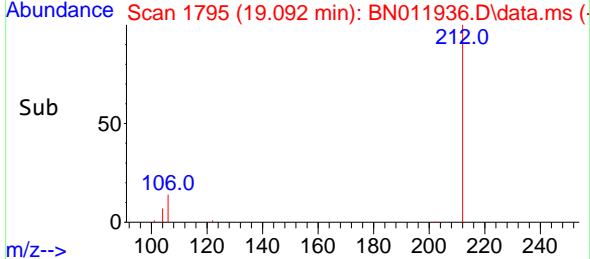
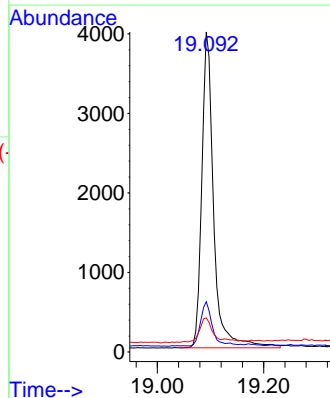
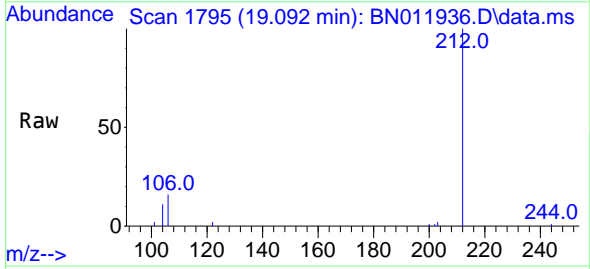
Ion	Ratio	Lower	Upper
188	100		
94	0.0	0.0	0.0
80	13.7	7.7	11.5#

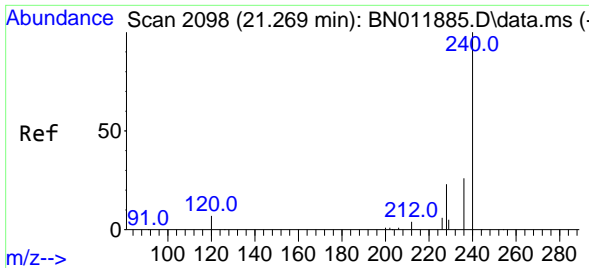


#27
 Fluoranthene-d10
 Concen: 0.16 ng
 RT: 19.092 min Scan# 1795
 Delta R.T. -0.010 min
 Lab File: BN011936.D
 Acq: 25 Sep 2020 05:53

Tgt Ion:212 Resp: 6144

Ion	Ratio	Lower	Upper
212	100		
106	13.9	6.4	9.6#
104	8.2	3.9	5.9#



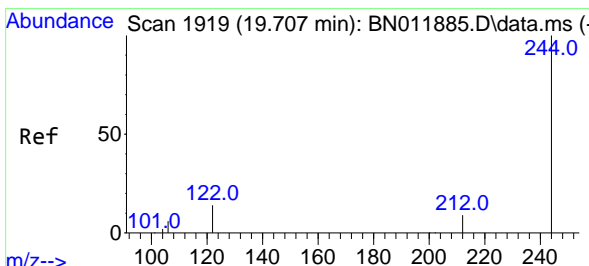
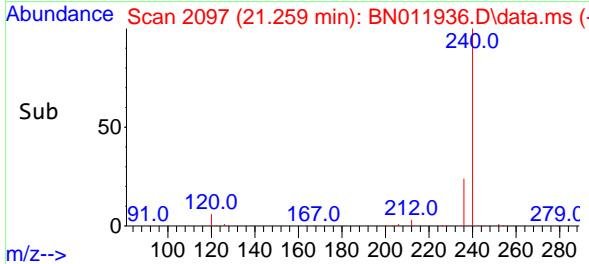
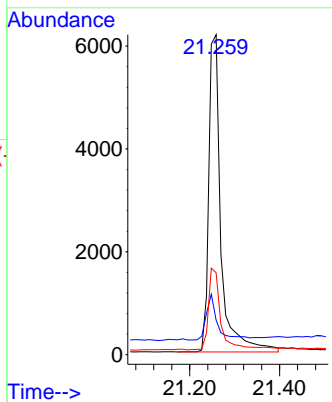
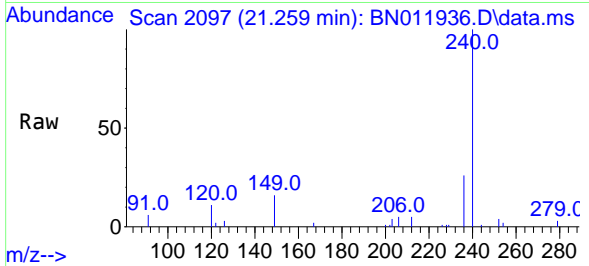


#29
 Chrysene-d12
 Concen: 0.40 ng
 RT: 21.259 min Scan# 2097
 Delta R.T. -0.010 min
 Lab File: BN011936.D
 Acq: 25 Sep 2020 05:53

Instrument :
 BNA_N
ClientSampled :
 RE120D1-20200916DL

Tgt Ion:240 Resp: 11576

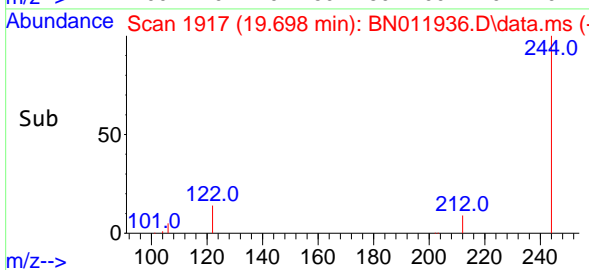
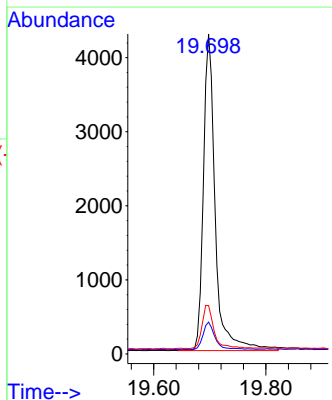
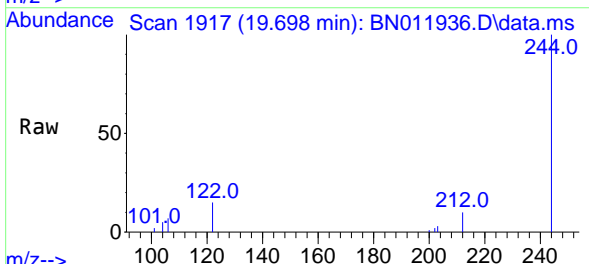
Ion	Ratio	Lower	Upper
240	100		
120	10.8	3.5	5.3#
236	25.6	20.5	30.7

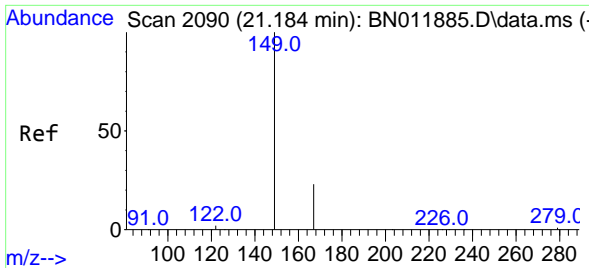


#31
 Terphenyl-d14
 Concen: 0.24 ng
 RT: 19.698 min Scan# 1917
 Delta R.T. -0.010 min
 Lab File: BN011936.D
 Acq: 25 Sep 2020 05:53

Tgt Ion:244 Resp: 6251

Ion	Ratio	Lower	Upper
244	100		
212	9.9	7.3	10.9
122	15.1	7.8	11.6#



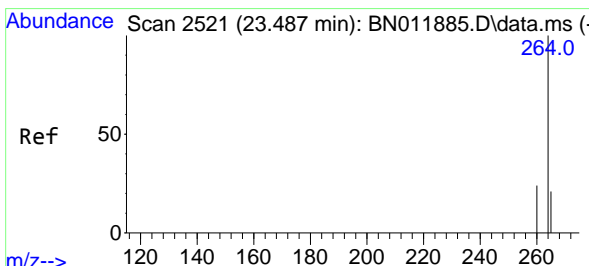
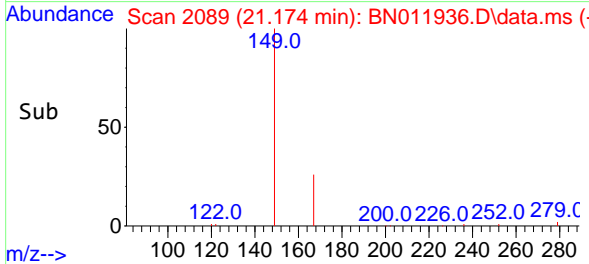
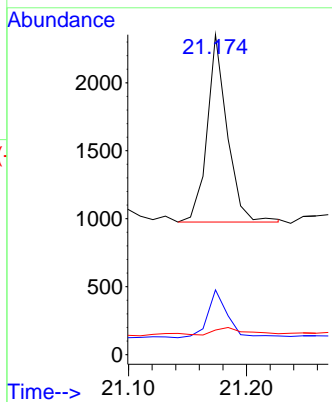
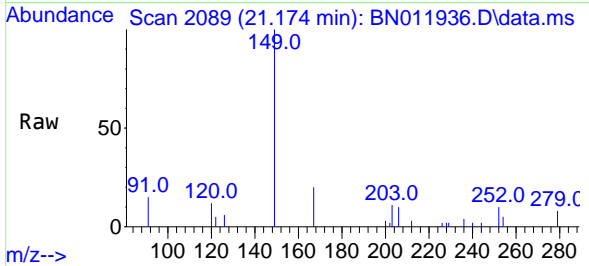


#34
 Bis(2-ethylhexyl)phthalate
 Concen: 0.06 ng
 RT: 21.174 min Scan# 2089
 Delta R.T. -0.010 min
 Lab File: BN011936.D
 Acq: 25 Sep 2020 05:53

Instrument :
 BNA_N
 ClientSampleId :
 RE120D1-20200916DL

Tgt Ion:149 Resp: 1626

Ion	Ratio	Lower	Upper
149	100		
167	25.5	23.6	35.4
279	6.5	4.0	6.0#



#36
 Perylene-d12
 Concen: 0.40 ng
 RT: 23.467 min Scan# 2515
 Delta R.T. -0.020 min
 Lab File: BN011936.D
 Acq: 25 Sep 2020 05:53

Tgt Ion:264 Resp: 11610

Ion	Ratio	Lower	Upper
264	100		
260	24.7	19.6	29.4
265	64.6	38.6	58.0#

