

Data Path : Z:\svoasrv\HPCHEM1\BNA\_N\Data\BN092520\  
 Data File : BN011947.D  
 Acq On : 25 Sep 2020 12:30  
 Operator : CG/JU  
 Sample : L4083-13  
 Misc :  
 ALS Vial : 6 Sample Multiplier: 1

**Instrument :**  
 BNA\_N  
**Client SampleID :**  
 RE109D3-20200917

Quant Time: Sep 25 13:03:04 2020  
 Quant Method : Z:\svoasrv\HPCHEM1\BNA\_N\Methods\8270-SIM-BN092320.M  
 Quant Title : ASP BNA STANDARDS FOR 5 POINT CALIBRATION  
 QLast Update : Fri Sep 25 11:18:41 2020  
 Response via : Initial Calibration

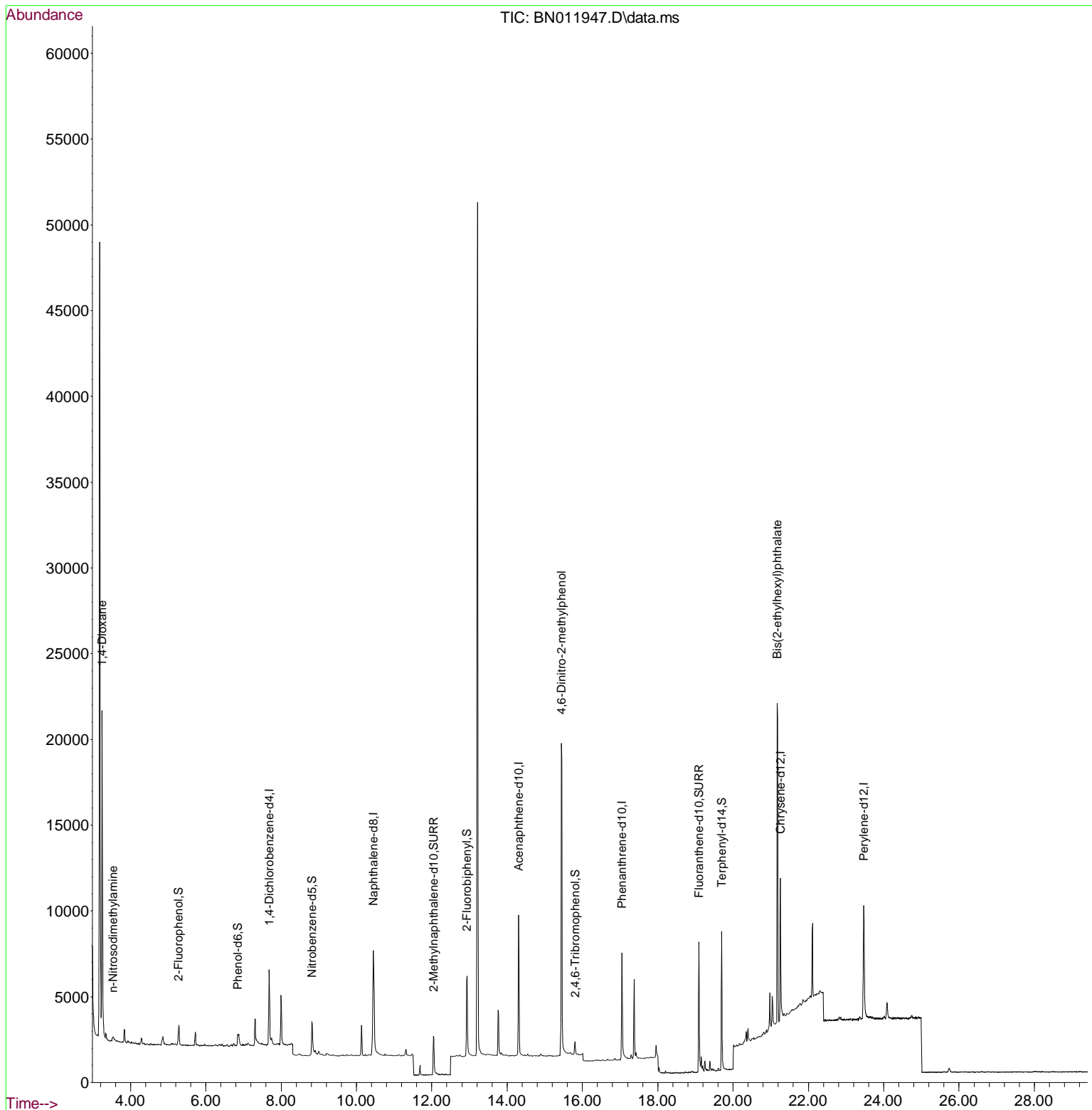
Compound	R.T.	QI on	Response	Conc	Units	Dev(Min)
-----						
Internal Standards						
1) 1,4-Dichlorobenzene-d4	7.683	152	2218	0.40	ng	0.00
7) Naphthalene-d8	10.453	136	8987	0.40	ng	# 0.00
13) Acenaphthene-d10	14.306	164	4951	0.40	ng	0.00
19) Phenanthrene-d10	17.053	188	9553	0.40	ng	# 0.00
29) Chrysene-d12	21.259	240	9463	0.40	ng	# 0.00
36) Perylene-d12	23.470	264	9665	0.40	ng	# 0.00
System Monitoring Compounds						
4) 2-Fluorophenol	5.283	112	793	0.10	ng	0.00
5) Phenol-d6	6.853	99	543	0.06	ng	0.00
8) Nitrobenzene-d5	8.818	82	2271	0.25	ng	0.00
11) 2-Methylnaphthalene-d10	12.047	152	3320	0.23	ng	0.00
14) 2,4,6-Tribromophenol	15.803	330	586	0.24	ng	0.00
15) 2-Fluorobiphenyl	12.936	172	5205	0.28	ng	0.00
27) Fluoranthene-d10	19.092	212	8928	0.32	ng	0.00
31) Terphenyl-d14	19.698	244	8475	0.39	ng	0.00
Target Compounds						
2) 1,4-Dioxane	3.245	88	10522	2.73	ng	Qvalue 95
3) n-Nitrosodimethylamine	3.543	42	116	0.02	ng	# 22
20) 4,6-Dinitro-2-methylph...	15.448	198	65	0.04	ng	# 1
34) Bis(2-ethylhexyl)phtha...	21.174	149	20152	0.94	ng	# 89
-----						

(#) = qualifier out of range (m) = manual integration (+) = signals summed

Data Path : Z:\svoasrv\HPCHEM1\BNA\_N\Data\BN092520\  
 Data File : BN011947.D  
 Acq On : 25 Sep 2020 12:30  
 Operator : CG/JU  
 Sample : L4083-13  
 Misc :  
 ALS Vial : 6 Sample Multiplier: 1

Instrument :  
 BNA\_N  
 ClientSampleId :  
 RE109D3-20200917

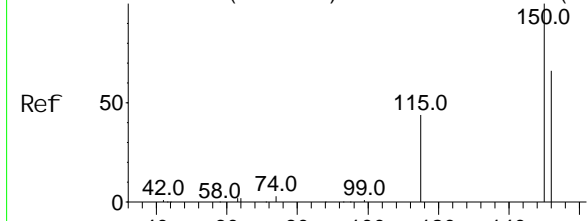
Quant Time: Sep 25 13:03:04 2020  
 Quant Method : Z:\svoasrv\HPCHEM1\BNA\_N\Methods\8270-SIM-BN092320.M  
 Quant Title : ASP BNA STANDARDS FOR 5 POINT CALIBRATION  
 QLast Update : Fri Sep 25 11:18:41 2020  
 Response via : Initial Calibration



Abundance Scan 585 (7.691 min): BN011885.D\data.ms (-575) (#1)

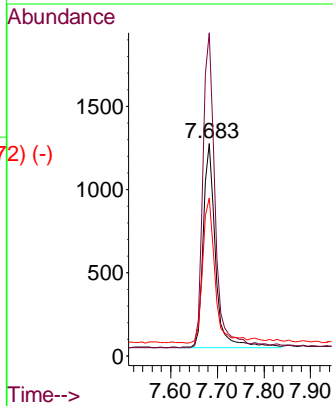
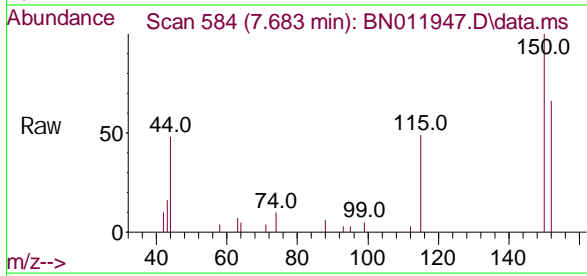
1, 4-Di chl orobenzene-d4  
Concen: 0.40 ng  
RT: 7.683 min Scan# 584  
Delta R.T. -0.000 min  
Lab File: BN011947.D  
Acq: 25 Sep 2020 12:30

Instrument :  
BNA\_N  
ClientSampleId :  
RE109D3-20200917

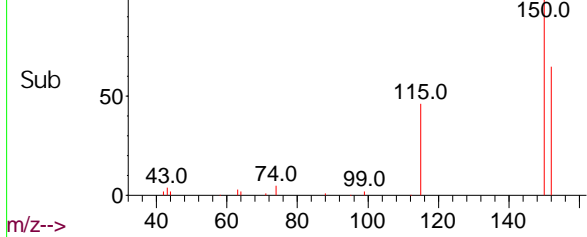


Tgt Ion: 152 Resp: 2218

Ion	Ratio	Lower	Upper
152	100		
150	152.0	118.3	177.5
115	74.2	51.3	76.9

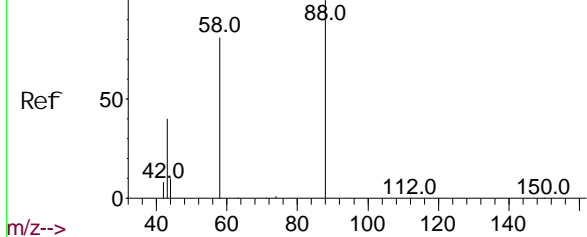


Abundance Scan 584 (7.683 min): BN011947.D\data.ms (-572) (-)



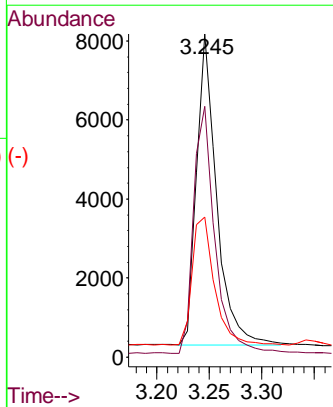
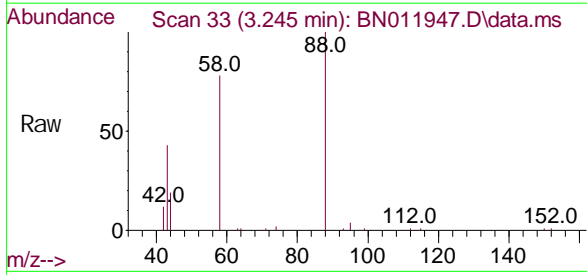
Abundance Scan 34 (3.253 min): BN011885.D\data.ms (-30) (#2)

1, 4-Di oxane  
Concen: 2.73 ng  
RT: 3.245 min Scan# 33  
Delta R.T. -0.008 min  
Lab File: BN011947.D  
Acq: 25 Sep 2020 12:30

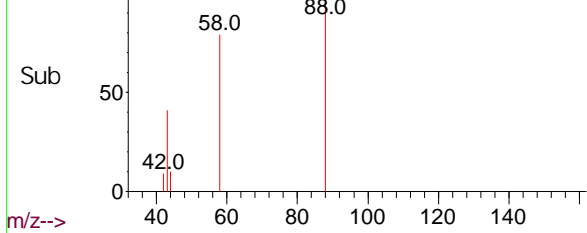


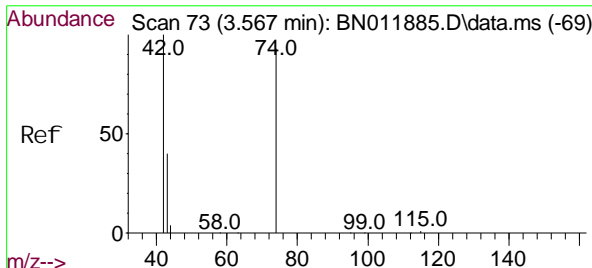
Tgt Ion: 88 Resp: 10522

Ion	Ratio	Lower	Upper
88	100		
58	83.7	63.3	94.9
43	44.9	33.0	49.4



Abundance Scan 33 (3.245 min): BN011947.D\data.ms (-28) (-)



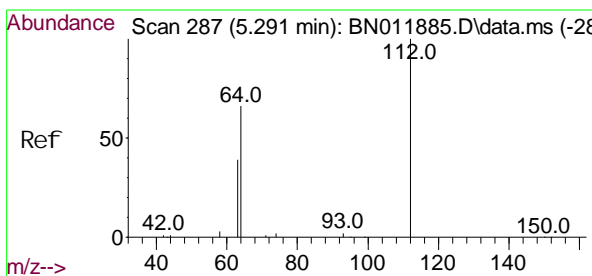
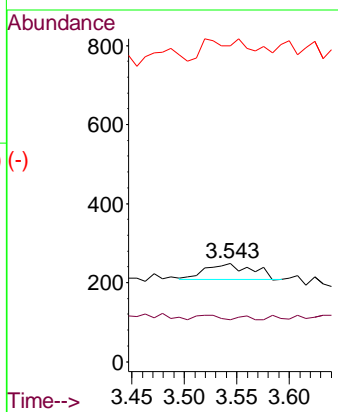
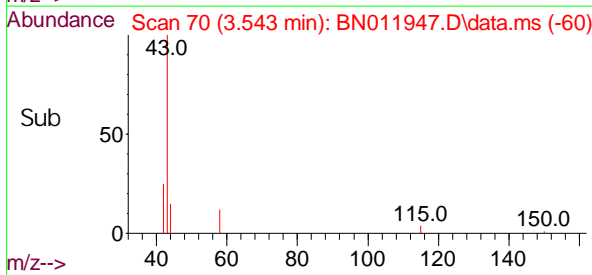
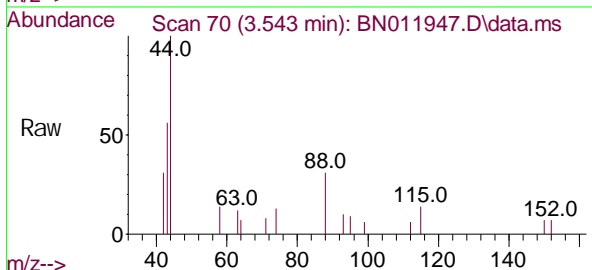


n-Ni trosodi methyl ami ne  
 Concen: 0.02 ng  
 RT: 3.543 mi n Scan# 70  
 Del ta R. T. -0.016 mi n  
 Lab Fi le: BN011947. D  
 Acq: 25 Sep 2020 12: 30

**Instrument :**  
 BNA\_N  
**ClientSampleId :**  
 RE109D3-20200917

Tgt Ion: 42 Resp: 116

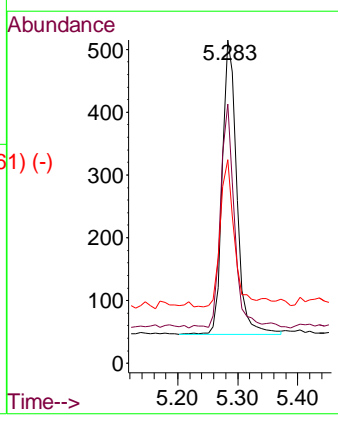
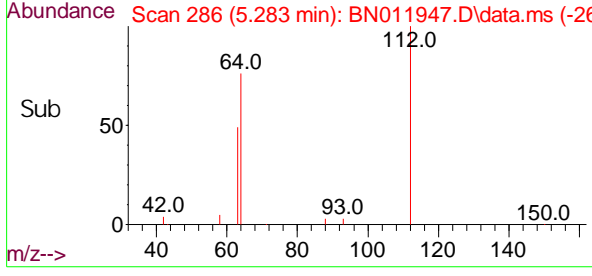
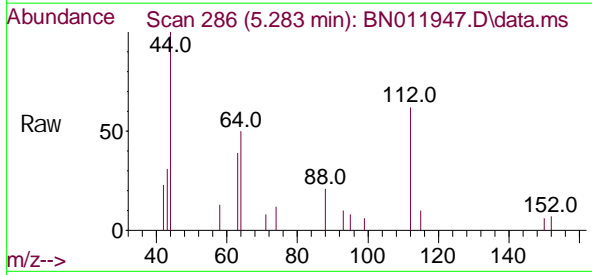
Ion	Ratio	Lower	Upper
42	100		
74	6.9	64.4	96.6#
44	0.0	6.7	10.1#



2-Fl uorophenol  
 Concen: 0.10 ng  
 RT: 5.283 mi n Scan# 286  
 Del ta R. T. 0.000 mi n  
 Lab Fi le: BN011947. D  
 Acq: 25 Sep 2020 12: 30

Tgt Ion: 112 Resp: 793

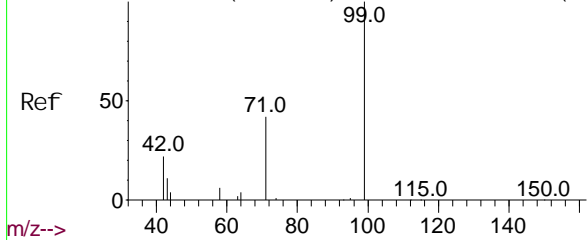
Ion	Ratio	Lower	Upper
112	100		
64	74.1	49.0	73.6#
63	47.9	31.8	47.6#



Abundance Scan 482 (6.861 min): BN011885.D\data.ms (-474#5)

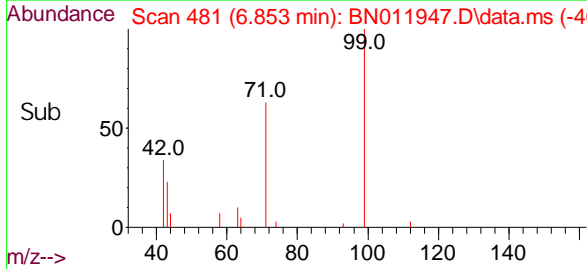
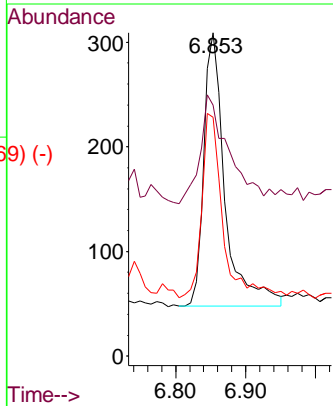
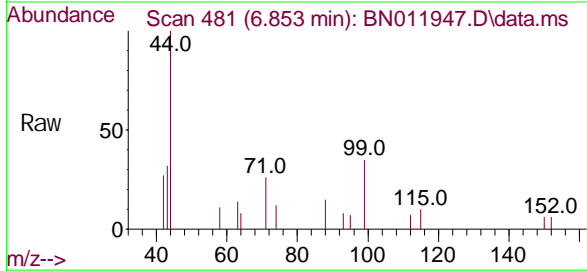
Phenol -d6  
Concen: 0.06 ng  
RT: 6.853 min Scan# 481  
Delta R.T. 0.000 min  
Lab File: BN011947.D  
Acq: 25 Sep 2020 12:30

**Instrument :**  
BNA\_N  
**ClientSampleId :**  
RE109D3-20200917



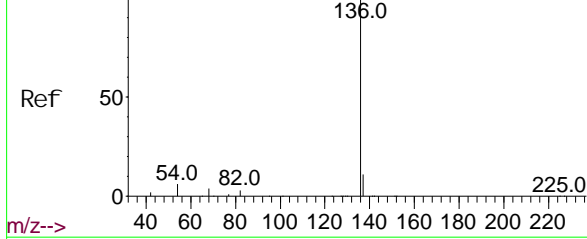
Tgt Ion: 99 Resp: 543

Ion	Ratio	Lower	Upper
99	100		
42	53.6	23.4	35.0#
71	67.4	38.1	57.1#



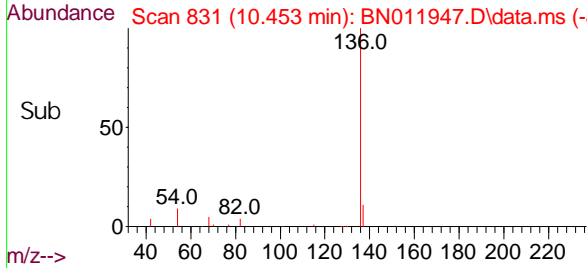
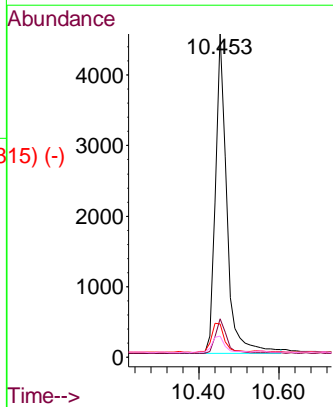
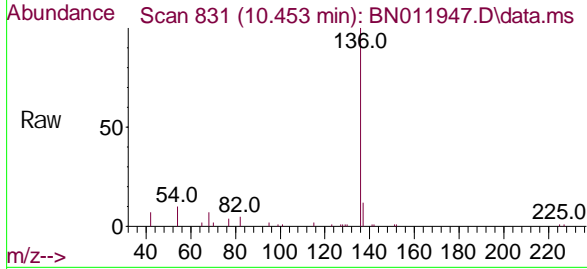
Abundance Scan 832 (10.465 min): BN011885.D\data.ms (-826#7)

Naphthalene-d8  
Concen: 0.40 ng  
RT: 10.453 min Scan# 831  
Delta R.T. 0.000 min  
Lab File: BN011947.D  
Acq: 25 Sep 2020 12:30

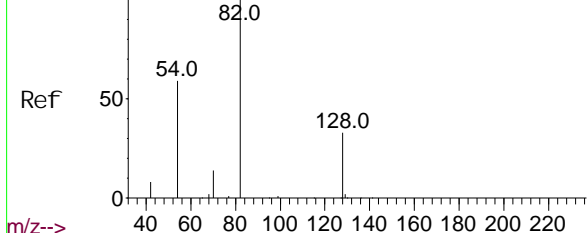


Tgt Ion: 136 Resp: 8987

Ion	Ratio	Lower	Upper
136	100		
137	11.9	9.5	14.3
54	10.3	5.6	8.4#
68	6.6	3.2	4.8#



Abundance Scan 703 (8.831 min): BN011885.D\data.ms (-700#)



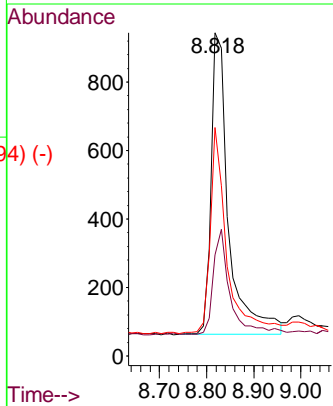
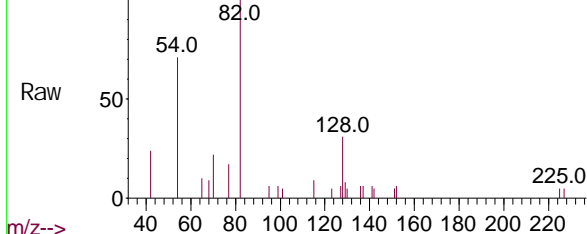
Nitrobenzene-d5  
Concen: 0.25 ng  
RT: 8.818 min Scan# 702  
Delta R.T. 0.000 min  
Lab File: BN011947.D  
Acq: 25 Sep 2020 12:30

Instrument :  
BNA\_N  
ClientSampled :  
RE109D3-20200917

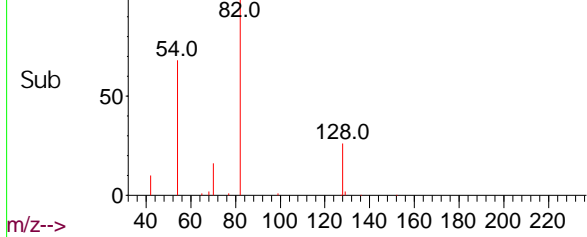
Tgt Ion: 82 Resp: 2271

Ion	Ratio	Lower	Upper
82	100		
128	31.4	34.2	51.2#
54	70.7	43.1	64.7#

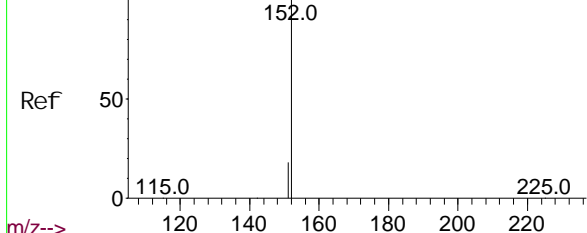
Abundance Scan 702 (8.818 min): BN011947.D\data.ms



Abundance Scan 702 (8.818 min): BN011947.D\data.ms (-694) (-)



Abundance Scan 1036 (12.055 min): BN011885.D\data.ms (-1015) (-)

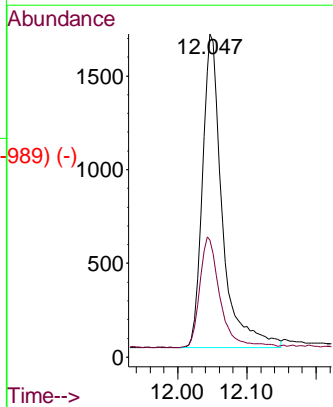
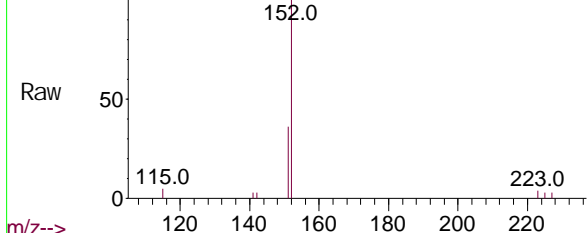


2-Methyl naphthal ene-d10  
Concen: 0.23 ng  
RT: 12.047 min Scan# 1034  
Delta R.T. 0.000 min  
Lab File: BN011947.D  
Acq: 25 Sep 2020 12:30

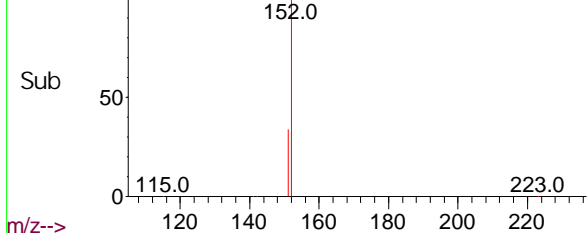
Tgt Ion: 152 Resp: 3320

Ion	Ratio	Lower	Upper
152	100		
151	36.4	16.7	25.1#

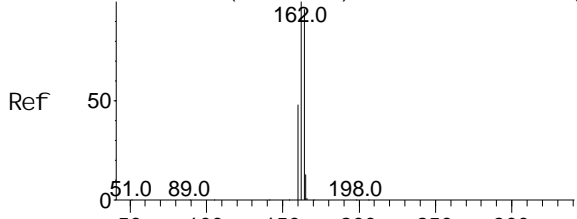
Abundance Scan 1034 (12.047 min): BN011947.D\data.ms



Abundance Scan 1034 (12.047 min): BN011947.D\data.ms (-989) (-)



Abundance Scan 1280 (14.319 min): BN011885.D\data.ms (-1275) (-)



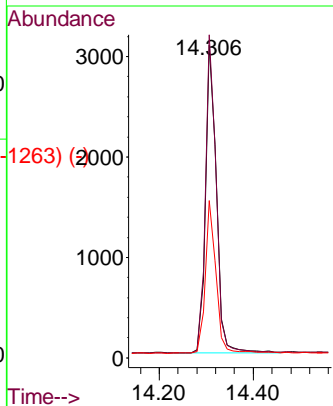
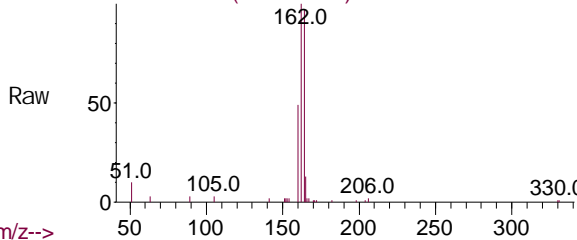
Acenaphthene-d10  
Concen: 0.40 ng  
RT: 14.306 min Scan# 1279  
Delta R.T. 0.000 min  
Lab File: BN011947.D  
Acq: 25 Sep 2020 12:30

Instrument :  
BNA\_N  
ClientSampled :  
RE109D3-20200917

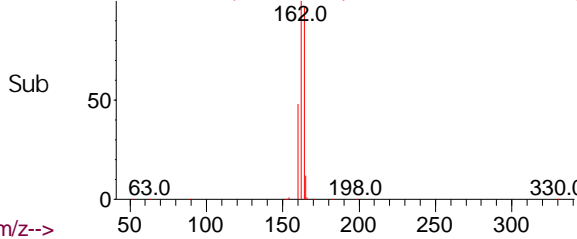
Tgt Ion: 164 Resp: 4951

Ion	Ratio	Lower	Upper
164	100		
162	103.3	83.6	125.4
160	50.3	41.2	61.8

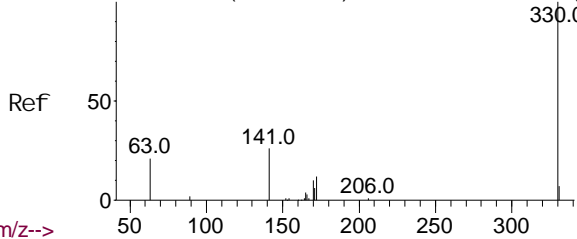
Abundance Scan 1279 (14.306 min): BN011947.D\data.ms



Abundance Scan 1279 (14.306 min): BN011947.D\data.ms (-1263) (-)



Abundance Scan 1398 (15.816 min): BN011885.D\data.ms (-1393) (-)

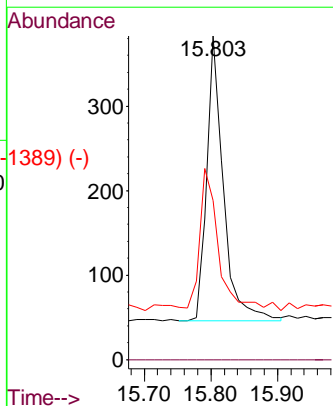
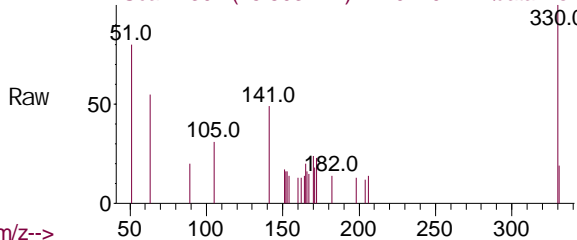


2,4,6-Tri bromophenol  
Concen: 0.24 ng  
RT: 15.803 min Scan# 1397  
Delta R.T. 0.000 min  
Lab File: BN011947.D  
Acq: 25 Sep 2020 12:30

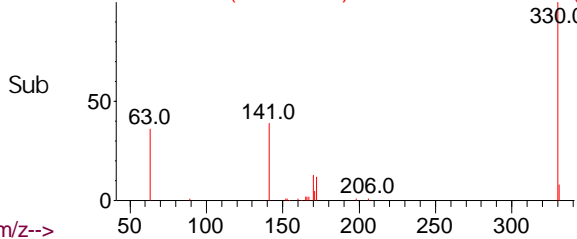
Tgt Ion: 330 Resp: 586

Ion	Ratio	Lower	Upper
330	100		
332	0.0	0.0	0.0
141	57.3	33.7	50.5#

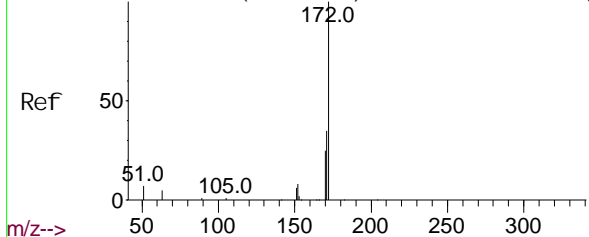
Abundance Scan 1397 (15.803 min): BN011947.D\data.ms



Abundance Scan 1397 (15.803 min): BN011947.D\data.ms (-1389) (-)



Abundance Scan 1171 (12.936 min): BN011885.D\data.ms (-1465) (-)



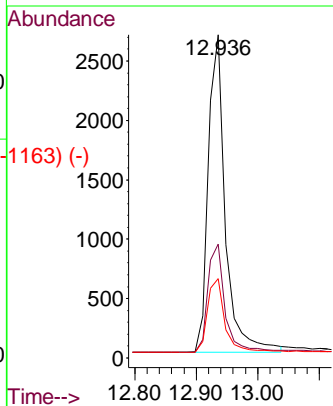
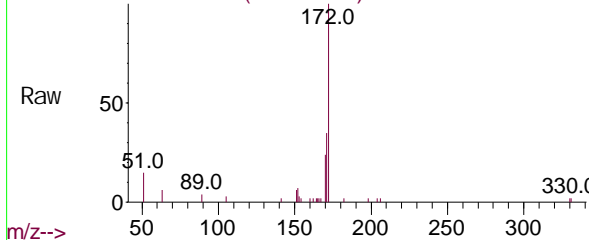
2-Fluorophenyl  
Concn: 0.28 ng  
RT: 12.936 min Scan# 1171  
Delta R.T. 0.000 min  
Lab File: BN011947.D  
Acq: 25 Sep 2020 12:30

Instrument :  
BNA\_N  
ClientSampled :  
RE109D3-20200917

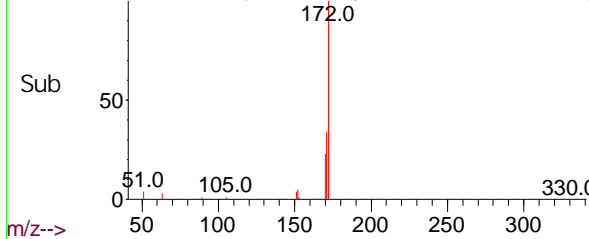
Tgt Ion: 172 Resp: 5205

Ion	Ratio	Lower	Upper
172	100		
171	35.3	27.4	41.2
170	24.5	17.8	26.6

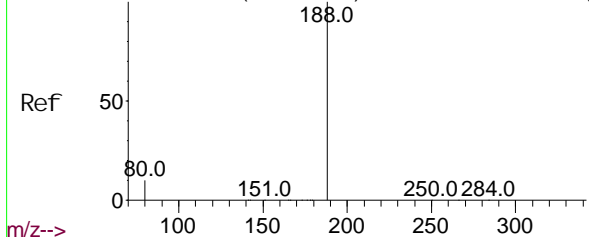
Abundance Scan 1171 (12.936 min): BN011947.D\data.ms



Abundance Scan 1171 (12.936 min): BN011947.D\data.ms (-1163) (-)



Abundance Scan 1500 (17.065 min): BN011885.D\data.ms (-1419) (-)

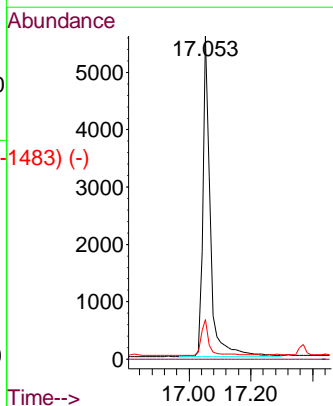
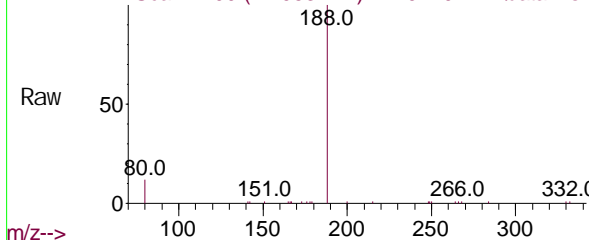


Phenanthrene-d10  
Concn: 0.40 ng  
RT: 17.053 min Scan# 1499  
Delta R.T. 0.000 min  
Lab File: BN011947.D  
Acq: 25 Sep 2020 12:30

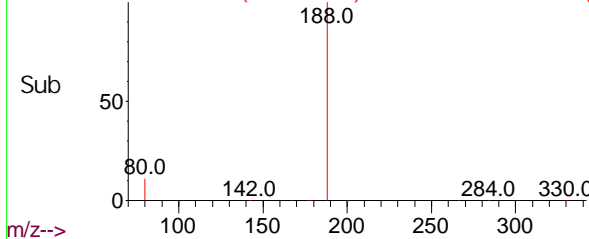
Tgt Ion: 188 Resp: 9553

Ion	Ratio	Lower	Upper
188	100		
94	0.0	0.0	0.0
80	12.3	7.7	11.5#

Abundance Scan 1499 (17.053 min): BN011947.D\data.ms

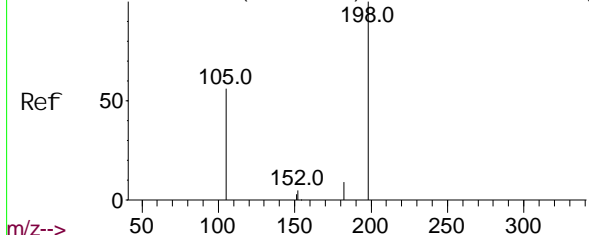


Abundance Scan 1499 (17.053 min): BN011947.D\data.ms (-1483) (-)





Abundance Scan 1369 (15.448 min): BN011885.D\data.ms (-1324) (-)

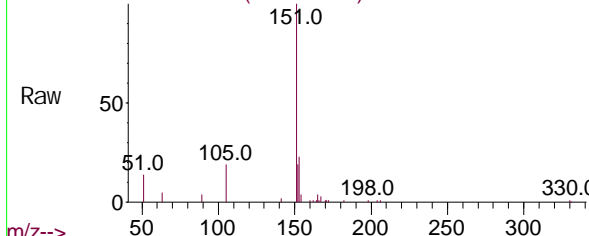


4, 6-Di ni tro-2-methyl phenol  
Concen: 0.04 ng  
RT: 15.448 min Scan# 1369  
Del ta R. T. 0.000 mi n  
Lab Fi le: BN011947. D  
Acq: 25 Sep 2020 12: 30

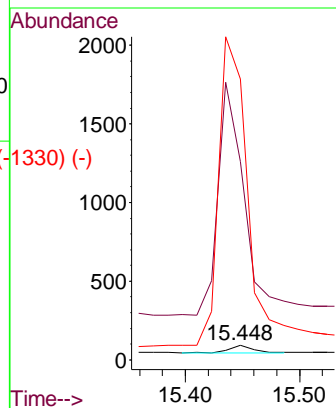
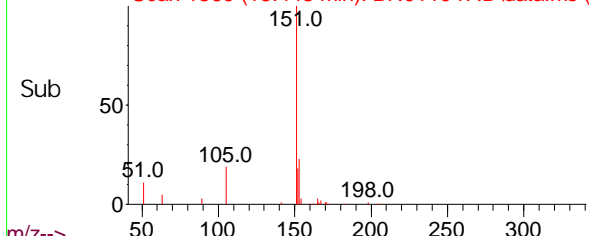
**Instrument :**  
BNA\_N  
**ClientSampled :**  
RE109D3-20200917

Tgt Ion: 198 Resp: 65  
Ion Ratio Lower Upper  
198 100  
51 1357.0 45.0 67.4#  
105 1920.4 30.4 45.6#

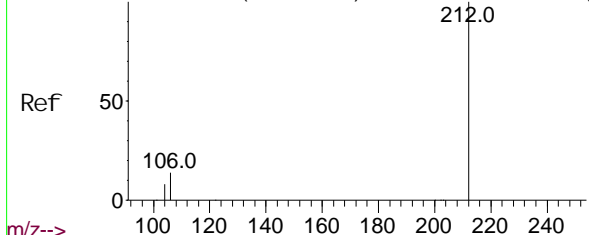
Abundance Scan 1369 (15.448 min): BN011947.D\data.ms



Abundance Scan 1369 (15.448 min): BN011947.D\data.ms (-1330) (-)



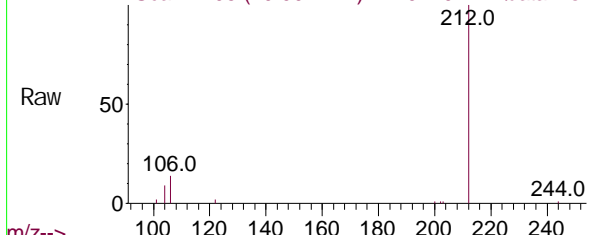
Abundance Scan 1797 (19.102 min): BN011885.D\data.ms (-1727) (-)



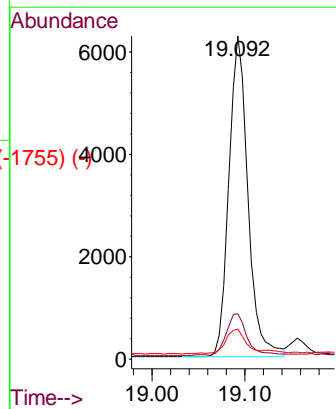
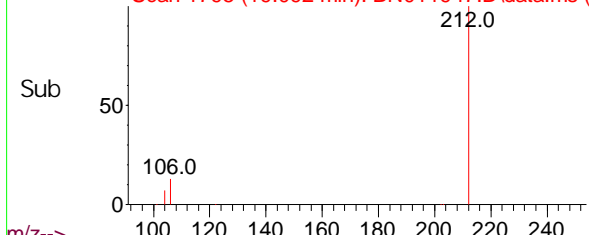
Fl uoran thene-d10  
Concen: 0.32 ng  
RT: 19.092 mi n Scan# 1795  
Del ta R. T. 0.000 mi n  
Lab Fi le: BN011947. D  
Acq: 25 Sep 2020 12: 30

Tgt Ion: 212 Resp: 8928  
Ion Ratio Lower Upper  
212 100  
106 14.0 6.4 9.6#  
104 7.9 3.9 5.9#

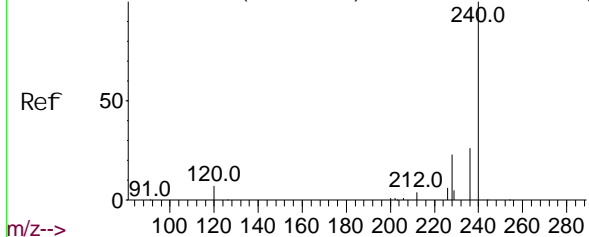
Abundance Scan 1795 (19.092 min): BN011947.D\data.ms



Abundance Scan 1795 (19.092 min): BN011947.D\data.ms (-1755) (-)



Abundance Scan 2098 (21.269 min): BN011885.D\data.ms (-2029) (-)

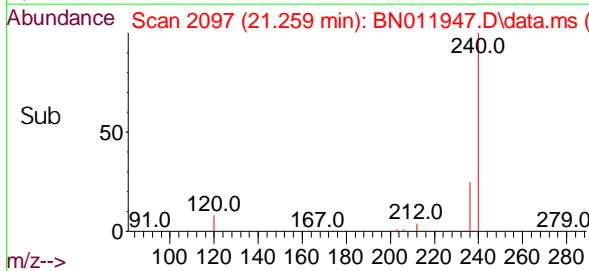
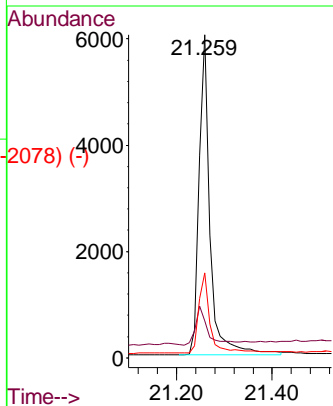
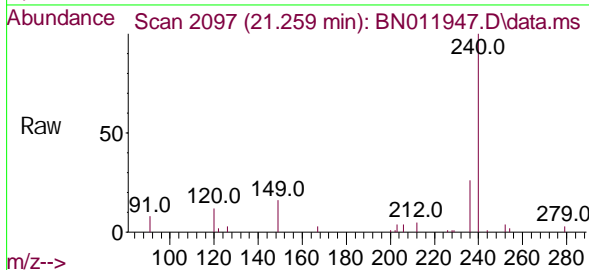


Chrysene-d12  
Concen: 0.40 ng  
RT: 21.259 min Scan# 2097  
Delta R.T. 0.000 min  
Lab File: BN011947.D  
Acq: 25 Sep 2020 12:30

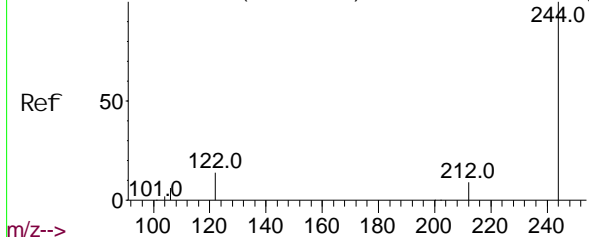
Instrument :  
BNA\_N  
ClientSampled :  
RE109D3-20200917

Tgt Ion: 240 Resp: 9463

Ion	Ratio	Lower	Upper
240	100		
120	11.5	3.5	5.3#
236	26.4	20.5	30.7



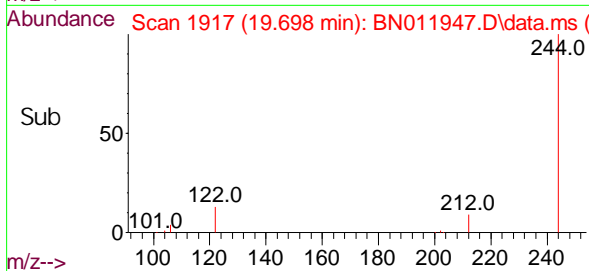
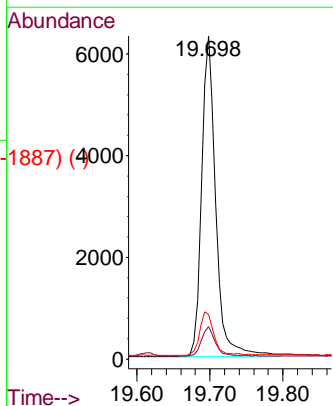
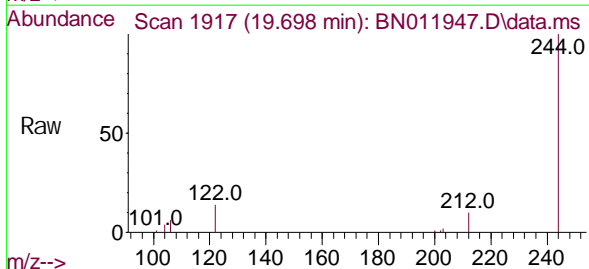
Abundance Scan 1919 (19.707 min): BN011885.D\data.ms (-1931) (-)



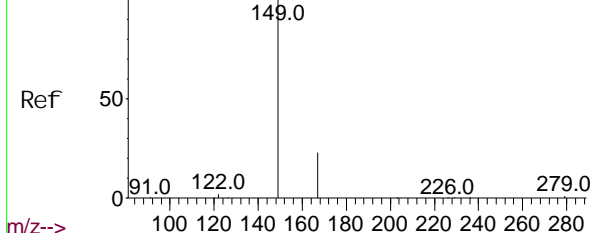
Terphenyl-d14  
Concen: 0.39 ng  
RT: 19.698 min Scan# 1917  
Delta R.T. 0.000 min  
Lab File: BN011947.D  
Acq: 25 Sep 2020 12:30

Tgt Ion: 244 Resp: 8475

Ion	Ratio	Lower	Upper
244	100		
212	10.0	7.3	10.9
122	13.8	7.8	11.6#



Abundance Scan 2090 (21.184 min): BN011885.D\data.ms (-2084) (-)



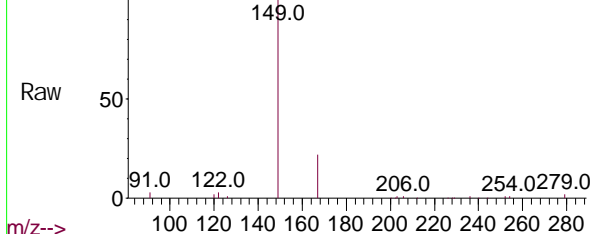
Bi s(2-ethyl hexyl )phthal ate  
Concen: 0.94 ng  
RT: 21.174 min Scan# 2089  
Del ta R. T. 0.000 mi n  
Lab Fi le: BN011947. D  
Acq: 25 Sep 2020 12: 30

Instrument :  
BNA\_N  
ClientSampleId :  
RE109D3-20200917

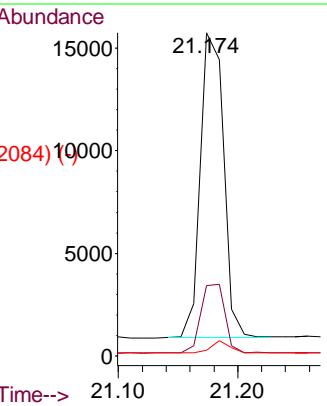
m/z-->

Tgt Ion: 149 Resp: 20152  
Ion Ratio Lower Upper  
149 100  
167 23.3 23.6 35.4#  
279 3.3 4.0 6.0#

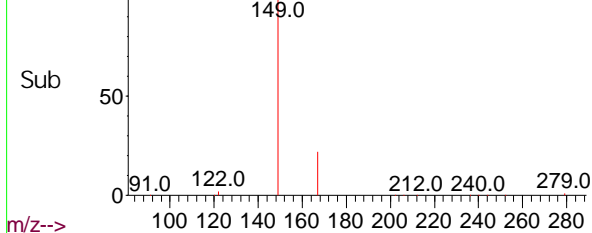
Abundance Scan 2089 (21.174 min): BN011947.D\data.ms



m/z-->

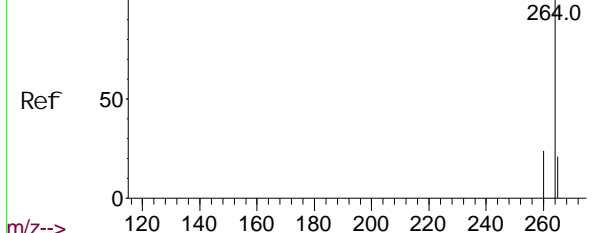


Abundance Scan 2089 (21.174 min): BN011947.D\data.ms (-2084) (-)



m/z-->

Abundance Scan 2521 (23.487 min): BN011885.D\data.ms (-2506) (-)

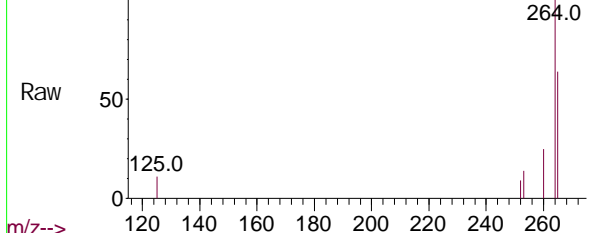


Peryl ene-d12  
Concen: 0.40 ng  
RT: 23.470 min Scan# 2516  
Del ta R. T. 0.000 mi n  
Lab Fi le: BN011947. D  
Acq: 25 Sep 2020 12: 30

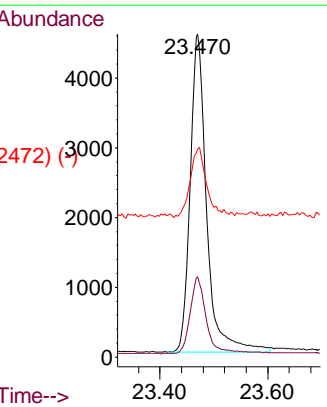
Tgt Ion: 264 Resp: 9665  
Ion Ratio Lower Upper  
264 100  
260 24.9 19.6 29.4  
265 64.4 38.6 58.0#

m/z-->

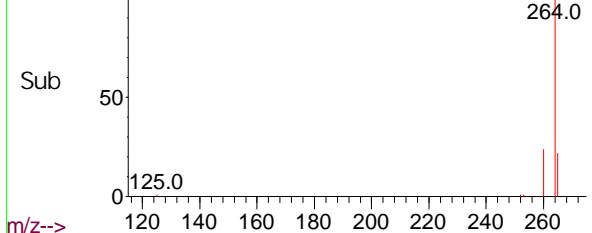
Abundance Scan 2516 (23.470 min): BN011947.D\data.ms



m/z-->



Abundance Scan 2516 (23.470 min): BN011947.D\data.ms (-2472) (-)



m/z-->