

Data Path : Z:\svoasrv\HPCHEM1\BNA\_N\Data\BN092520\  
 Data File : BN011950.D  
 Acq On : 25 Sep 2020 15:12  
 Operator : CG/JU  
 Sample : L4125-13MS  
 Misc :  
 ALS Vial : 9 Sample Multiplier: 1

**Instrument :**  
 BNA\_N  
**ClientSampled :**  
 CS-31MS

Quant Time: Sep 25 16:15:34 2020  
 Quant Method : Z:\svoasrv\HPCHEM1\BNA\_N\Methods\8270-SIM-BN092320.M  
 Quant Title : ASP BNA STANDARDS FOR 5 POINT CALIBRATION  
 QLast Update : Fri Sep 25 11:18:41 2020  
 Response via : Initial Calibration

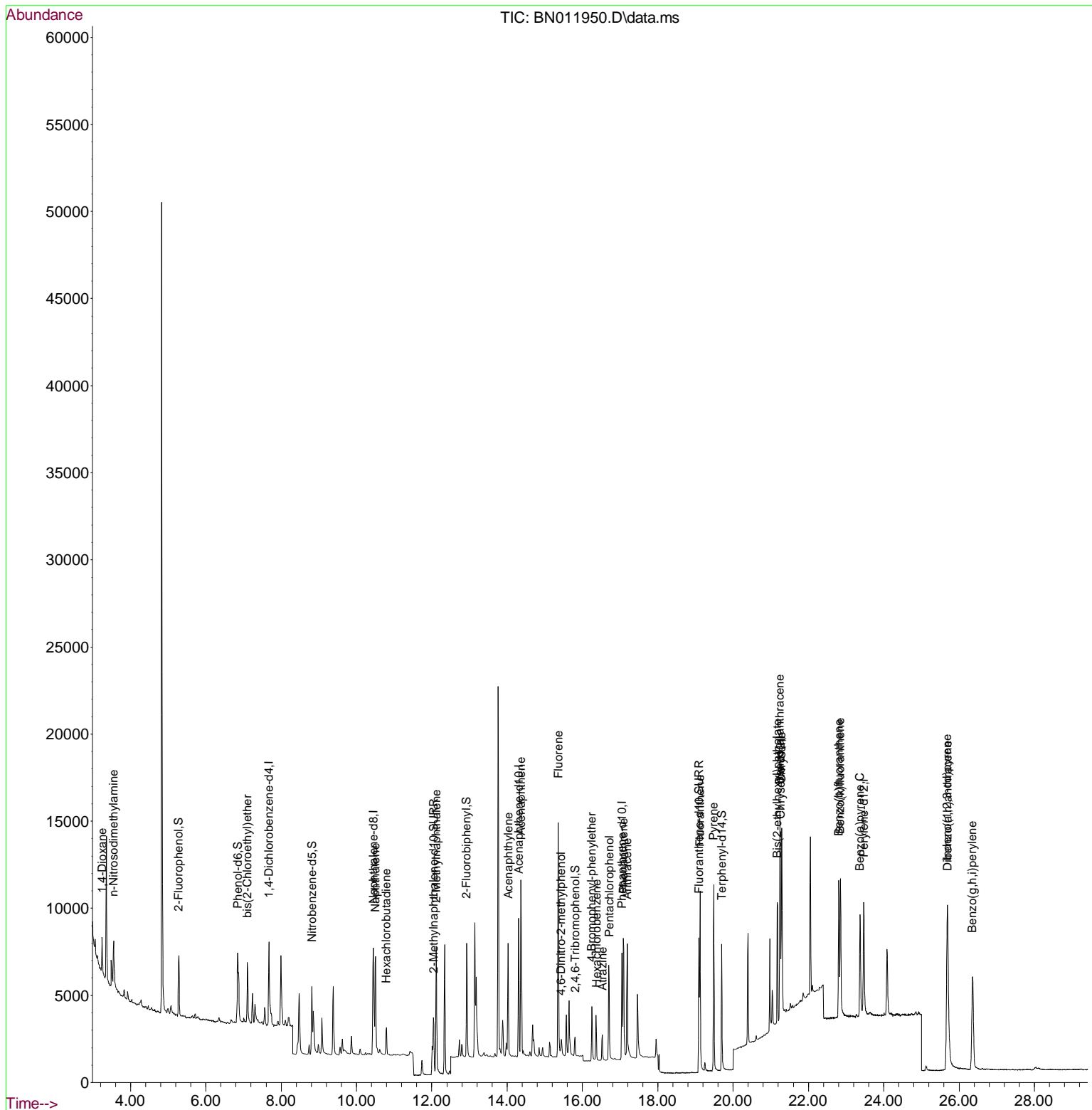
| Compound                           | R.T.   | QI on | Response | Conc | Units | Dev(Min)      |
|------------------------------------|--------|-------|----------|------|-------|---------------|
| <b>Internal Standards</b>          |        |       |          |      |       |               |
| 1) 1,4-Dichlorobenzene-d4          | 7.675  | 152   | 2168     | 0.40 | ng    | # 0.00        |
| 7) Naphthalene-d8                  | 10.453 | 136   | 8826     | 0.40 | ng    | # 0.00        |
| 13) Acenaphthene-d10               | 14.306 | 164   | 4483     | 0.40 | ng    | 0.00          |
| 19) Phenanthrene-d10               | 17.053 | 188   | 8717     | 0.40 | ng    | # 0.00        |
| 29) Chrysene-d12                   | 21.259 | 240   | 8422     | 0.40 | ng    | # 0.00        |
| 36) Perylene-d12                   | 23.470 | 264   | 9143     | 0.40 | ng    | # 0.00        |
| <b>System Monitoring Compounds</b> |        |       |          |      |       |               |
| 4) 2-Fluorophenol                  | 5.283  | 112   | 2506     | 0.33 | ng    | 0.00          |
| 5) Phenol-d6                       | 6.845  | 99    | 3224     | 0.34 | ng    | 0.00          |
| 8) Nitrobenzene-d5                 | 8.818  | 82    | 3248     | 0.36 | ng    | 0.00          |
| 11) 2-Methylnaphthalene-d10        | 12.047 | 152   | 5186     | 0.37 | ng    | 0.00          |
| 14) 2,4,6-Tribromophenol           | 15.803 | 330   | 786      | 0.36 | ng    | 0.00          |
| 15) 2-Fluorobiphenyl               | 12.923 | 172   | 6030     | 0.36 | ng    | -0.01         |
| 27) Fluoranthene-d10               | 19.092 | 212   | 9065     | 0.35 | ng    | 0.00          |
| 31) Terphenyl-d14                  | 19.698 | 244   | 7771     | 0.40 | ng    | 0.00          |
| <b>Target Compounds</b>            |        |       |          |      |       | <b>Qvalue</b> |
| 2) 1,4-Dioxane                     | 3.245  | 88    | 1128     | 0.30 | ng    | # 49          |
| 3) n-Nitrosodimethylamine          | 3.551  | 42    | 2141     | 0.39 | ng    | # 97          |
| 6) bis(2-Chloroethyl)ether         | 7.103  | 93    | 2535     | 0.31 | ng    | 88            |
| 9) Naphthalene                     | 10.504 | 128   | 8371     | 0.33 | ng    | 99            |
| 10) Hexachlorobutadiene            | 10.795 | 225   | 1281     | 0.31 | ng    | # 98          |
| 12) 2-Methylnaphthalene            | 12.118 | 142   | 5299     | 0.33 | ng    | 96            |
| 16) Acenaphthylene                 | 14.027 | 152   | 7110     | 0.33 | ng    | 100           |
| 17) Acenaphthene                   | 14.370 | 154   | 4841     | 0.33 | ng    | 96            |
| 18) Fluorene                       | 15.359 | 166   | 5615     | 0.31 | ng    | 99            |
| 20) 4,6-Dinitro-2-methylph...      | 15.435 | 198   | 623      | 0.38 | ng    | # 2           |
| 21) 4-Bromophenyl-phenyl ether     | 16.250 | 248   | 1438     | 0.31 | ng    | # 55          |
| 22) Hexachlorobenzene              | 16.372 | 284   | 1692     | 0.31 | ng    | # 82          |
| 23) Atrazine                       | 16.530 | 200   | 1418     | 0.32 | ng    | 98            |
| 24) Pentachlorophenol              | 16.713 | 266   | 2655     | 1.01 | ng    | 98            |
| 25) Phenanthrene                   | 17.090 | 178   | 8399     | 0.31 | ng    | 99            |
| 26) Anthracene                     | 17.187 | 178   | 7777     | 0.33 | ng    | 100           |
| 28) Fluoranthene                   | 19.122 | 202   | 9664     | 0.32 | ng    | # 95          |
| 30) Pyrene                         | 19.484 | 202   | 10097    | 0.32 | ng    | 99            |
| 32) Benzo(a)anthracene             | 21.237 | 228   | 8985     | 0.33 | ng    | 98            |
| 33) Chrysene                       | 21.290 | 228   | 9181     | 0.32 | ng    | 98            |
| 34) Bis(2-ethylhexyl)phtha...      | 21.174 | 149   | 7444     | 0.39 | ng    | # 91          |
| 35) Indeno(1,2,3-cd)pyrene         | 25.688 | 276   | 12462    | 0.38 | ng    | # 87          |
| 37) Benzo(b)fluoranthene           | 22.806 | 252   | 9848     | 0.31 | ng    | # 81          |
| 38) Benzo(k)fluoranthene           | 22.851 | 252   | 10361    | 0.30 | ng    | # 77          |
| 39) Benzo(a)pyrene                 | 23.371 | 252   | 8786     | 0.30 | ng    | # 74          |
| 40) Di benzo(a,h)anthracene        | 25.698 | 278   | 10117    | 0.34 | ng    | # 83          |
| 41) Benzo(g,h,i)perylene           | 26.356 | 276   | 11316    | 0.35 | ng    | # 89          |

(#) = qualifier out of range (m) = manual integration (+) = signals summed

Data Path : Z:\svoasrv\HPCHEM1\BNA\_N\Data\BN092520\  
 Data File : BN011950.D  
 Acq On : 25 Sep 2020 15:12  
 Operator : CG/JU  
 Sample : L4125-13MS  
 Misc :  
 ALS Vial : 9 Sample Multiplier: 1

Instrument :  
 BNA\_N  
 Client Sample ID :  
 CS-31MS

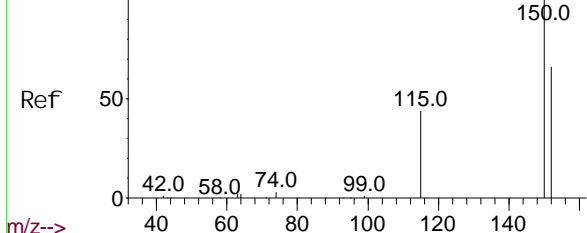
Quant Time: Sep 25 16:15:34 2020  
 Quant Method : Z:\svoasrv\HPCHEM1\BNA\_N\Methods\8270-SIM-BN092320.M  
 Quant Title : ASP BNA STANDARDS FOR 5 POINT CALIBRATION  
 QLast Update : Fri Sep 25 11:18:41 2020  
 Response via : Initial Calibration



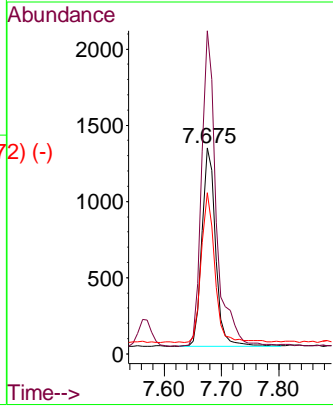
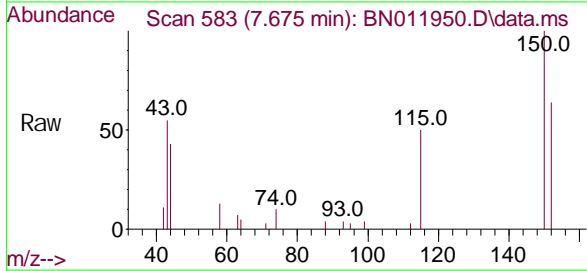
Abundance Scan 585 (7.691 min): BN011885.D\data.ms (-575) (#1)

1, 4-Di chl orobenzene-d4  
Concen: 0.40 ng  
RT: 7.675 min Scan# 583  
Del ta R. T. -0.008 min  
Lab Fi le: BN011950. D  
Acq: 25 Sep 2020 15: 12

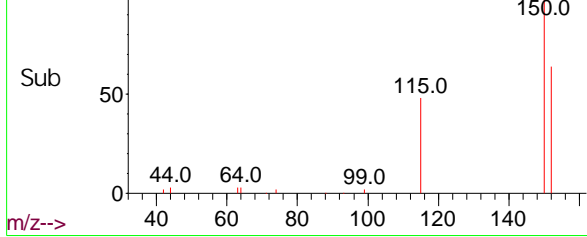
**Instrument :**  
BNA\_N  
**ClientSampled :**  
CS-31MS



Tgt Ion: 152 Resp: 2168  
Ion Ratio Lower Upper  
152 100  
150 156.8 118.3 177.5  
115 78.3 51.3 76.9#

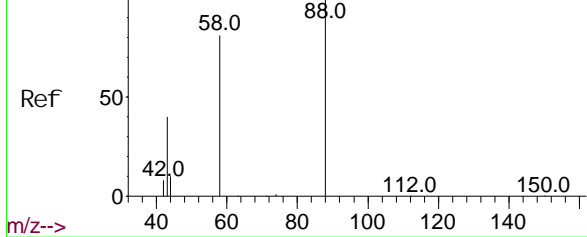


Abundance Scan 583 (7.675 min): BN011950.D\data.ms (-572) (-)

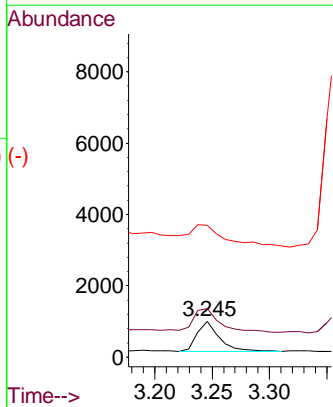
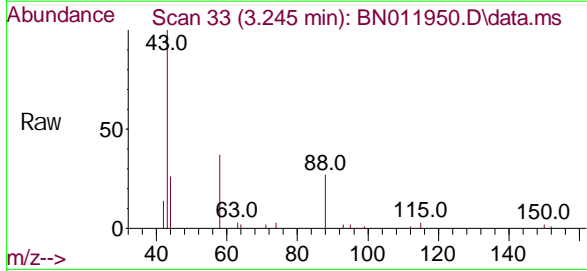


Abundance Scan 34 (3.253 min): BN011885.D\data.ms (-30) (#2)

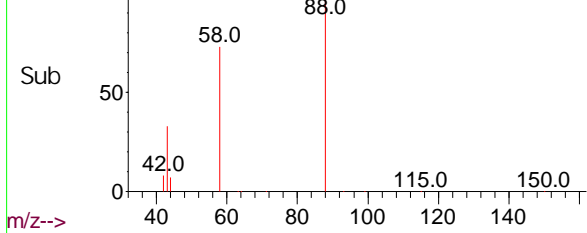
1, 4-Di oxane  
Concen: 0.30 ng  
RT: 3.245 min Scan# 33  
Del ta R. T. -0.008 min  
Lab Fi le: BN011950. D  
Acq: 25 Sep 2020 15: 12

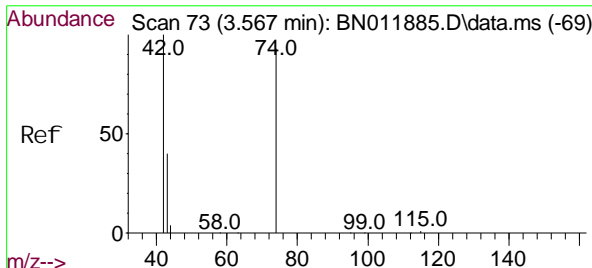


Tgt Ion: 88 Resp: 1128  
Ion Ratio Lower Upper  
88 100  
58 93.0 63.3 94.9  
43 115.3 33.0 49.4#



Abundance Scan 33 (3.245 min): BN011950.D\data.ms (-28) (-)



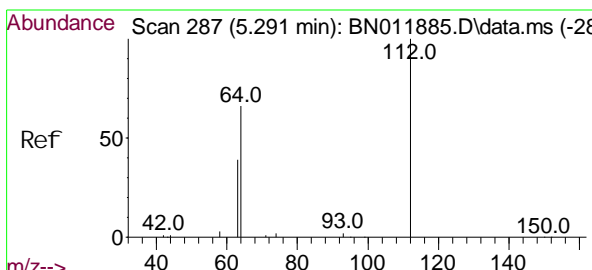
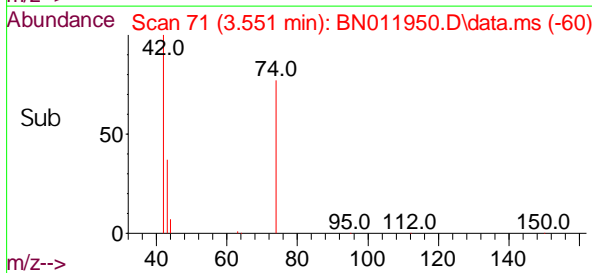
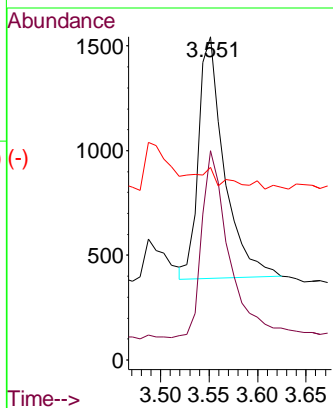
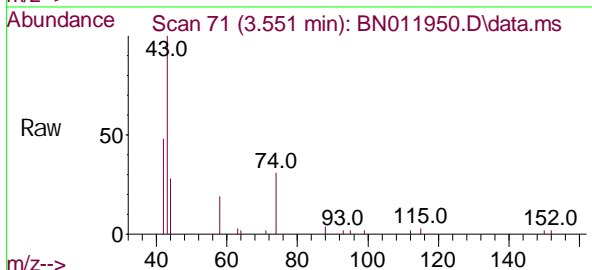


(-#3)  
 n-Ni trosodi methyl ami ne  
 Concen: 0.39 ng  
 RT: 3.551 mi n Scan# 71  
 Del ta R. T. -0.008 mi n  
 Lab Fi le: BN011950. D  
 Acq: 25 Sep 2020 15:12

**Instrument :**  
 BNA\_N  
**ClientSampled :**  
 CS-31MS

Tgt Ion: 42 Resp: 2141

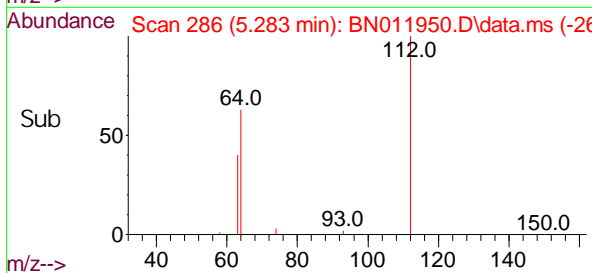
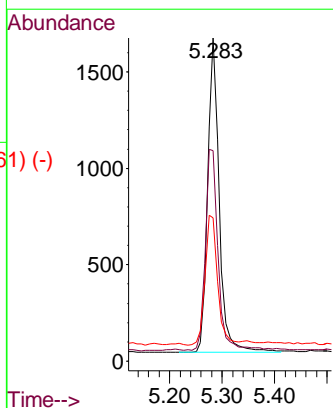
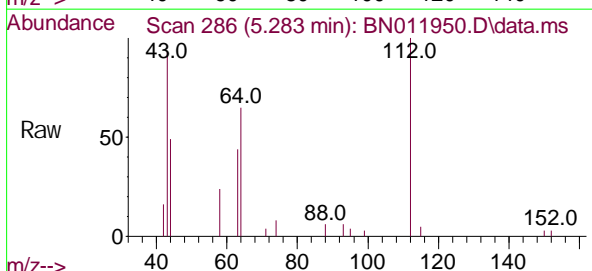
| Ion | Ratio | Lower | Upper |
|-----|-------|-------|-------|
| 42  | 100   |       |       |
| 74  | 81.6  | 64.4  | 96.6  |
| 44  | 0.0   | 6.7   | 10.1# |



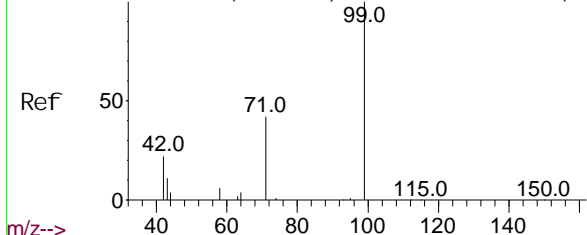
(#4)  
 2-Fl uorophenol  
 Concen: 0.33 ng  
 RT: 5.283 mi n Scan# 286  
 Del ta R. T. 0.000 mi n  
 Lab Fi le: BN011950. D  
 Acq: 25 Sep 2020 15:12

Tgt Ion: 112 Resp: 2506

| Ion | Ratio | Lower | Upper |
|-----|-------|-------|-------|
| 112 | 100   |       |       |
| 64  | 69.7  | 49.0  | 73.6  |
| 63  | 44.7  | 31.8  | 47.6  |



Abundance Scan 482 (6.861 min): BN011885.D\data.ms (-474)#5



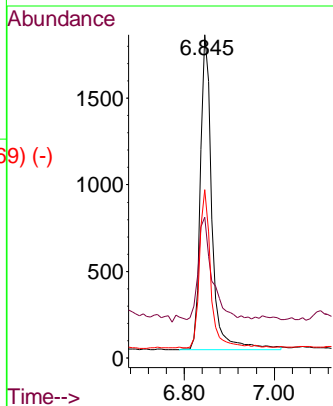
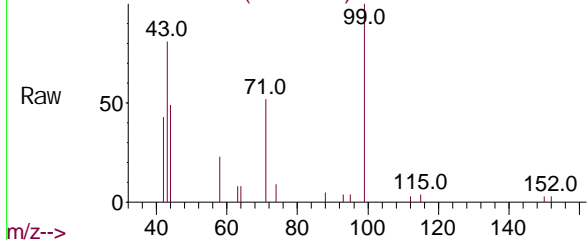
Phenol -d6  
Concen: 0.34 ng  
RT: 6.845 min Scan# 480  
Delta R.T. -0.008 min  
Lab File: BN011950.D  
Acq: 25 Sep 2020 15:12

Instrument :  
BNA\_N  
ClientSampleId :  
CS-31MS

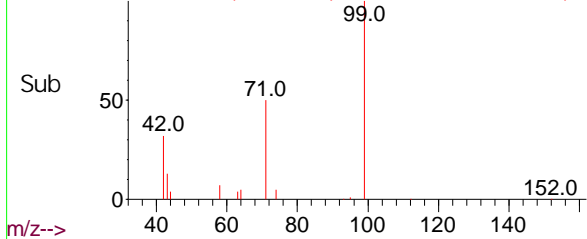
Tgt Ion: 99 Resp: 3224

| Ion | Ratio | Lower | Upper |
|-----|-------|-------|-------|
| 99  | 100   |       |       |
| 42  | 41.4  | 23.4  | 35.0# |
| 71  | 49.2  | 38.1  | 57.1  |

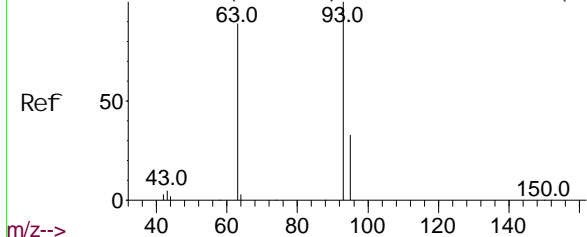
Abundance Scan 480 (6.845 min): BN011950.D\data.ms



Abundance Scan 480 (6.845 min): BN011950.D\data.ms (-469) (-)



Abundance Scan 514 (7.119 min): BN011885.D\data.ms (-510)#6

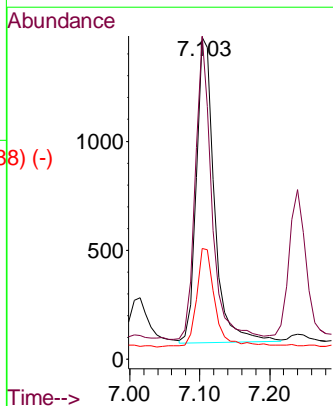
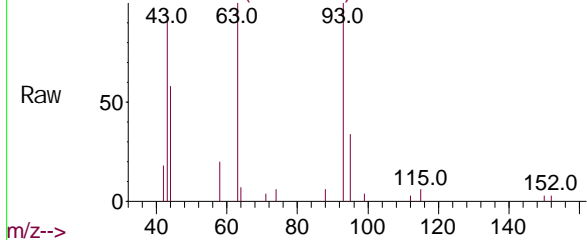


bis(2-Chloroethyl)ether  
Concen: 0.31 ng  
RT: 7.103 min Scan# 512  
Delta R.T. -0.008 min  
Lab File: BN011950.D  
Acq: 25 Sep 2020 15:12

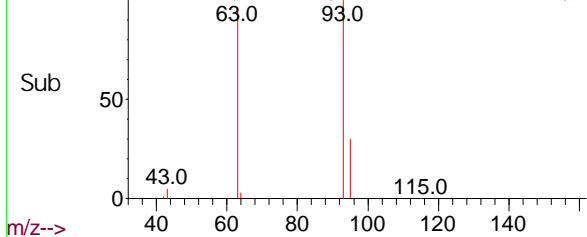
Tgt Ion: 93 Resp: 2535

| Ion | Ratio | Lower | Upper |
|-----|-------|-------|-------|
| 93  | 100   |       |       |
| 63  | 90.5  | 61.1  | 91.7  |
| 95  | 33.3  | 25.5  | 38.3  |

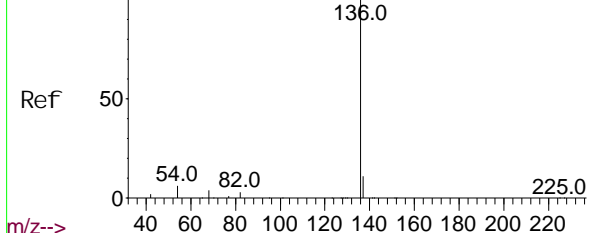
Abundance Scan 512 (7.103 min): BN011950.D\data.ms



Abundance Scan 512 (7.103 min): BN011950.D\data.ms (-488) (-)



Abundance Scan 832 (10.465 min): BN011885.D\data.ms (-827) (-)



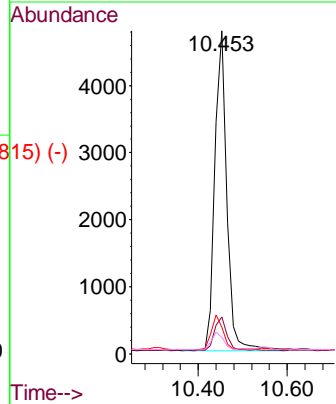
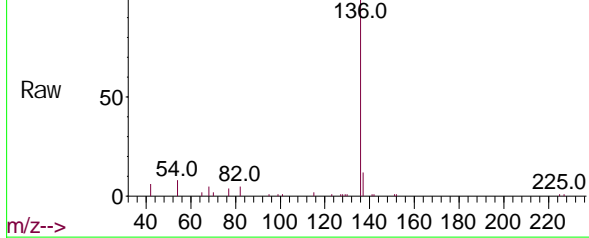
Naphthal ene-d8  
Concen: 0.40 ng  
RT: 10.453 min Scan# 831  
Del ta R. T. 0.000 min  
Lab Fi le: BN011950. D  
Acq: 25 Sep 2020 15:12

Instrument :  
BNA\_N  
ClientSampled :  
CS-31MS

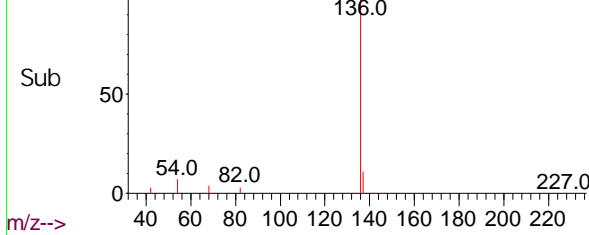
Tgt Ion: 136 Resp: 8826

| Ion | Ratio | Lower | Upper |
|-----|-------|-------|-------|
| 136 | 100   |       |       |
| 137 | 11.5  | 9.5   | 14.3  |
| 54  | 8.3   | 5.6   | 8.4   |
| 68  | 5.2   | 3.2   | 4.8#  |

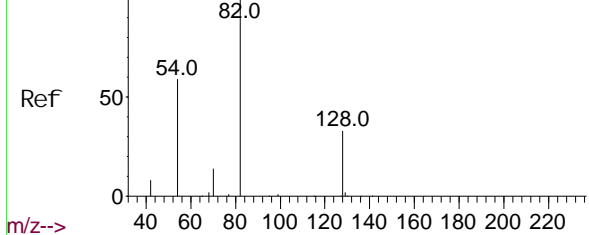
Abundance Scan 831 (10.453 min): BN011950.D\data.ms



Abundance Scan 831 (10.453 min): BN011950.D\data.ms (-815) (-)



Abundance Scan 703 (8.831 min): BN011885.D\data.ms (-700) (-)

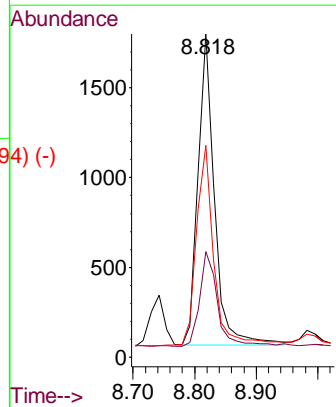
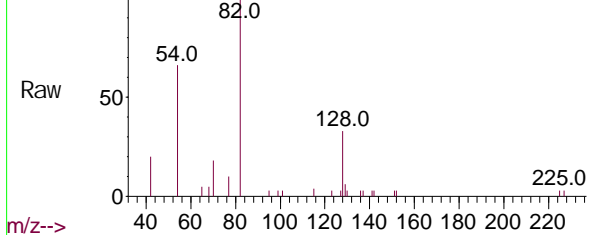


Ni trobenzene-d5  
Concen: 0.36 ng  
RT: 8.818 min Scan# 702  
Del ta R. T. 0.000 min  
Lab Fi le: BN011950. D  
Acq: 25 Sep 2020 15:12

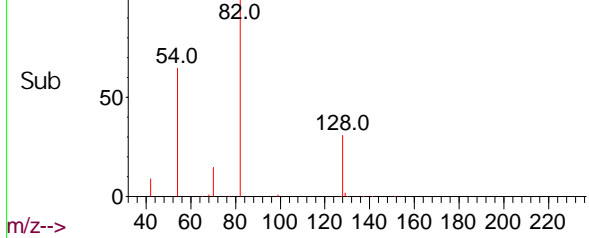
Tgt Ion: 82 Resp: 3248

| Ion | Ratio | Lower | Upper |
|-----|-------|-------|-------|
| 82  | 100   |       |       |
| 128 | 32.7  | 34.2  | 51.2# |
| 54  | 65.5  | 43.1  | 64.7# |

Abundance Scan 702 (8.818 min): BN011950.D\data.ms



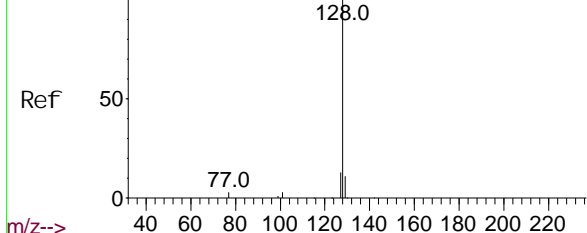
Abundance Scan 702 (8.818 min): BN011950.D\data.ms (-694) (-)



Abundance Scan 836 (10.516 min): BN011885.D\data.ms (-837) (-)

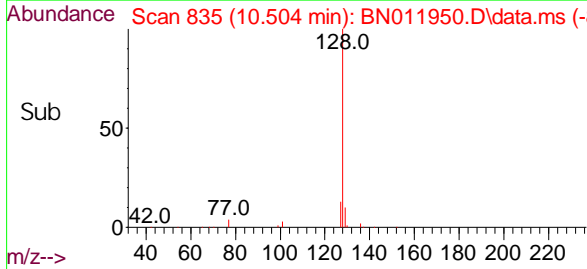
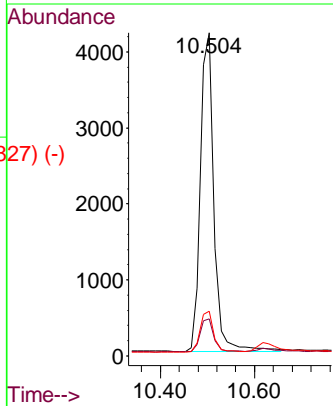
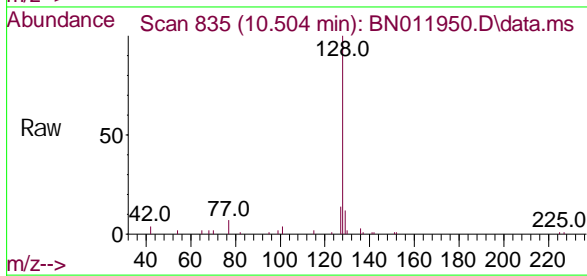
Naphthalene  
Concen: 0.33 ng  
RT: 10.504 min Scan# 835  
Delta R.T. 0.000 min  
Lab File: BN011950.D  
Acq: 25 Sep 2020 15:12

Instrument :  
BNA\_N  
Client Sampled :  
CS-31MS



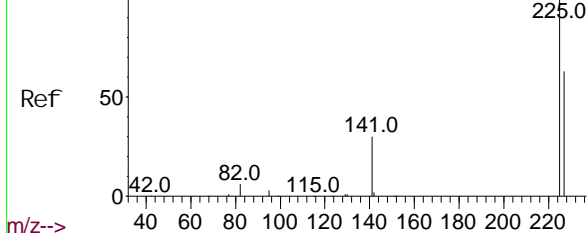
Tgt Ion: 128 Resp: 8371

| Ion | Ratio | Lower | Upper |
|-----|-------|-------|-------|
| 128 | 100   |       |       |
| 129 | 11.5  | 9.7   | 14.5  |
| 127 | 13.8  | 11.0  | 16.4  |



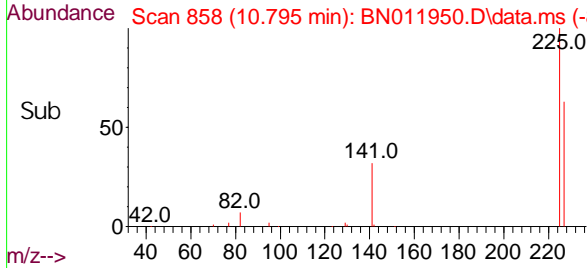
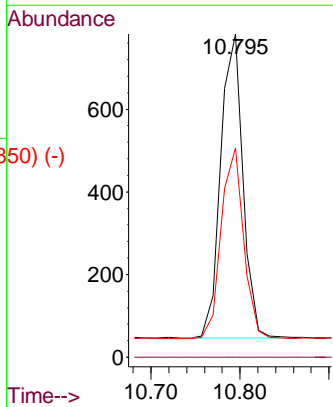
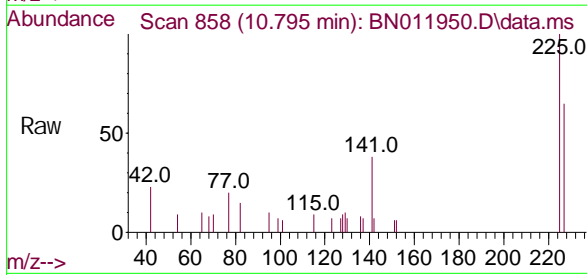
Abundance Scan 859 (10.808 min): BN011885.D\data.ms (-854) (-)

Hexachlorobutadiene  
Concen: 0.31 ng  
RT: 10.795 min Scan# 858  
Delta R.T. 0.000 min  
Lab File: BN011950.D  
Acq: 25 Sep 2020 15:12

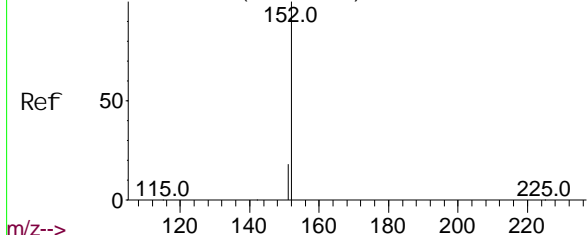


Tgt Ion: 225 Resp: 1281

| Ion | Ratio | Lower | Upper |
|-----|-------|-------|-------|
| 225 | 100   |       |       |
| 223 | 0.0   | 0.0   | 0.0   |
| 227 | 63.0  | 51.9  | 77.9  |



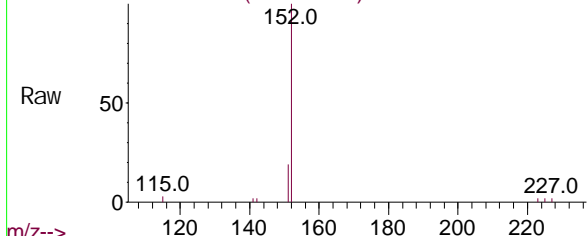
Abundance Scan 1036 (12.055 min): BN011885.D\data.ms (-1025) (-)



2-Methyl naphthal ene-d10  
Concen: 0.37 ng  
RT: 12.047 min Scan# 1034  
Delta R. T. 0.000 min  
Lab File: BN011950.D  
Acq: 25 Sep 2020 15:12

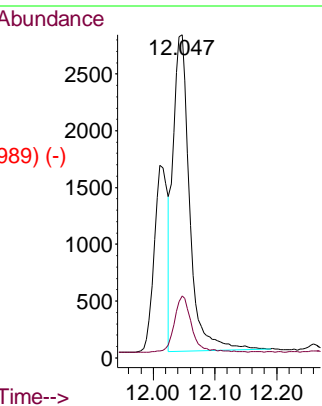
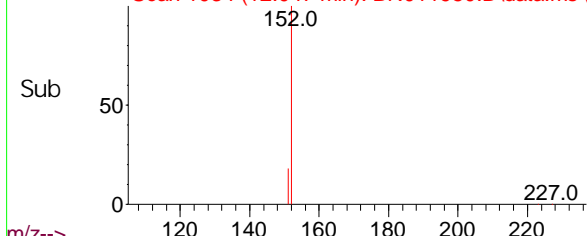
Instrument :  
BNA\_N  
ClientSampled :  
CS-31MS

Abundance Scan 1034 (12.047 min): BN011950.D\data.ms

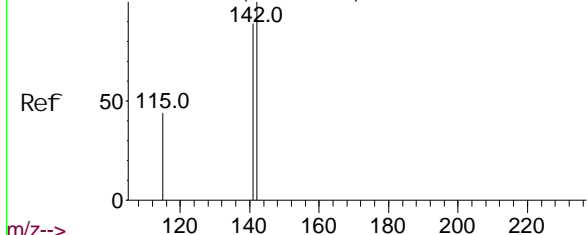


Tgt Ion: 152 Resp: 5186  
Ion Ratio Lower Upper  
152 100  
151 18.9 16.7 25.1

Abundance Scan 1034 (12.047 min): BN011950.D\data.ms (-989) (-)

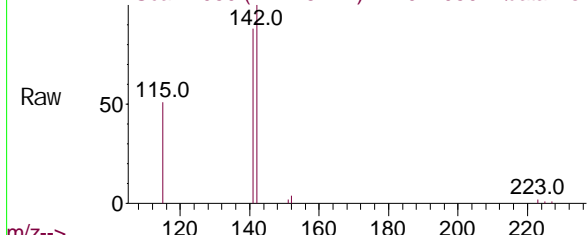


Abundance Scan 1053 (12.131 min): BN011885.D\data.ms (-1043) (-)



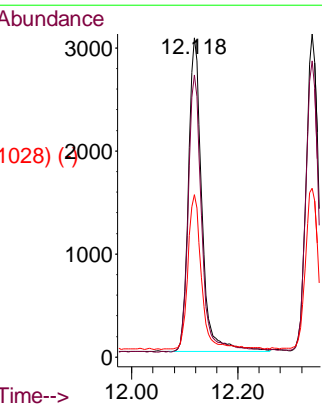
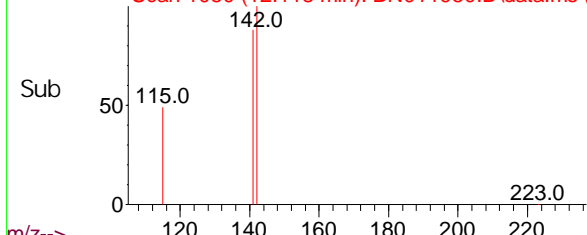
2-Methyl naphthal ene  
Concen: 0.33 ng  
RT: 12.118 min Scan# 1050  
Delta R. T. -0.004 min  
Lab File: BN011950.D  
Acq: 25 Sep 2020 15:12

Abundance Scan 1050 (12.118 min): BN011950.D\data.ms



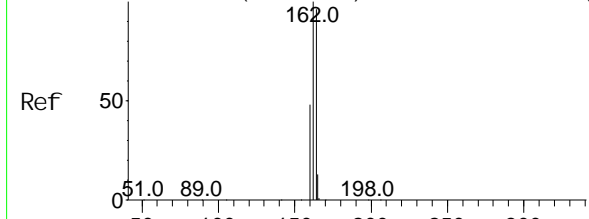
Tgt Ion: 142 Resp: 5299  
Ion Ratio Lower Upper  
142 100  
141 88.3 70.0 105.0  
115 50.9 35.8 53.6

Abundance Scan 1050 (12.118 min): BN011950.D\data.ms (-1028) (-)





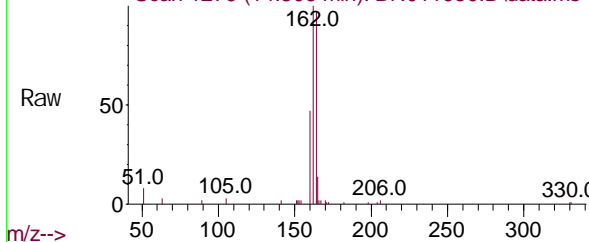
Abundance Scan 1280 (14.319 min): BN011885.D\data.ms (-1275) (-)



Acenaphthene-d10  
Concen: 0.40 ng  
RT: 14.306 min Scan# 1279  
Delta R. T. 0.000 min  
Lab File: BN011950.D  
Acq: 25 Sep 2020 15:12

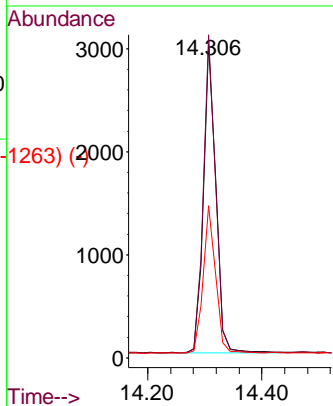
Instrument :  
BNA\_N  
Client Sampled :  
CS-31MS

Abundance Scan 1279 (14.306 min): BN011950.D\data.ms

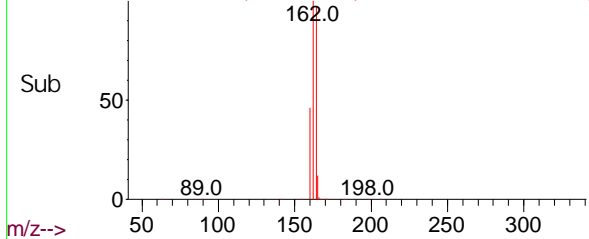


Tgt Ion: 164 Resp: 4483

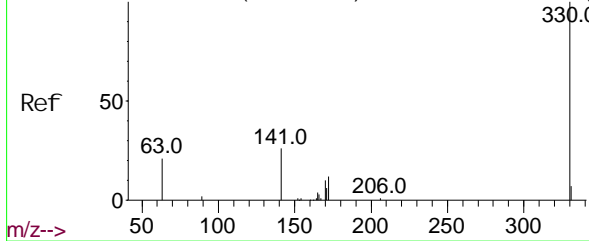
| Ion | Ratio | Lower | Upper |
|-----|-------|-------|-------|
| 164 | 100   |       |       |
| 162 | 103.2 | 83.6  | 125.4 |
| 160 | 48.6  | 41.2  | 61.8  |



Abundance Scan 1279 (14.306 min): BN011950.D\data.ms (-1263) (-)

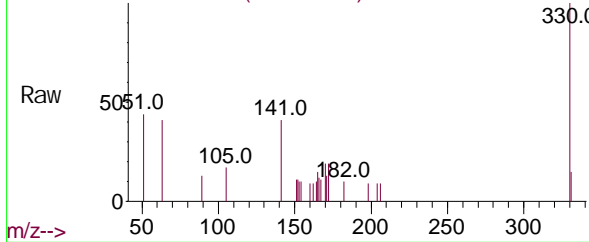


Abundance Scan 1398 (15.816 min): BN011885.D\data.ms (-1393) (-)



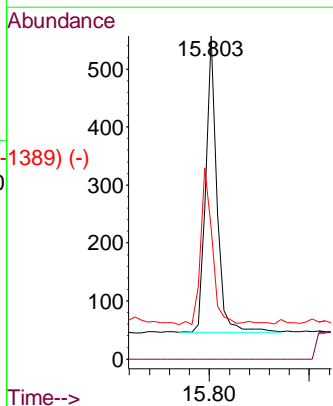
2,4,6-Tri bromophenol  
Concen: 0.36 ng  
RT: 15.803 min Scan# 1397  
Delta R. T. 0.000 min  
Lab File: BN011950.D  
Acq: 25 Sep 2020 15:12

Abundance Scan 1397 (15.803 min): BN011950.D\data.ms

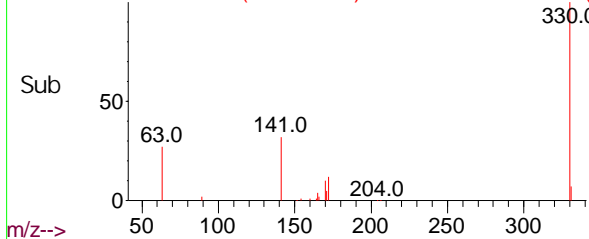


Tgt Ion: 330 Resp: 786

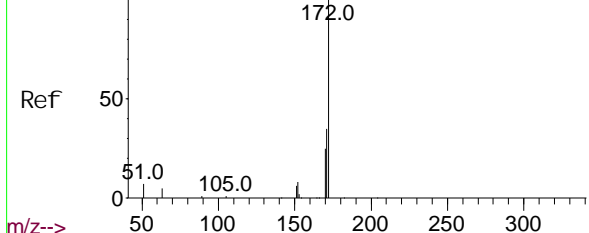
| Ion | Ratio | Lower | Upper |
|-----|-------|-------|-------|
| 330 | 100   |       |       |
| 332 | 0.0   | 0.0   | 0.0   |
| 141 | 55.1  | 33.7  | 50.5# |



Abundance Scan 1397 (15.803 min): BN011950.D\data.ms (-1389) (-)



Abundance Scan 1171 (12.936 min): BN011885.D\data.ms (-1165) (-)



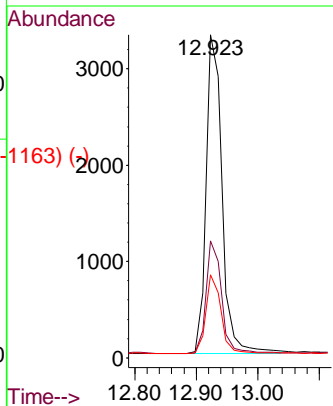
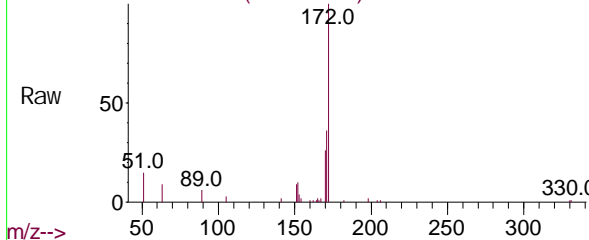
2-Fluorophenyl  
Concn: 0.36 ng  
RT: 12.923 min Scan# 1170  
Delta R.T. -0.013 min  
Lab File: BN011950.D  
Acq: 25 Sep 2020 15:12

Instrument :  
BNA\_N  
Client Sampled :  
CS-31MS

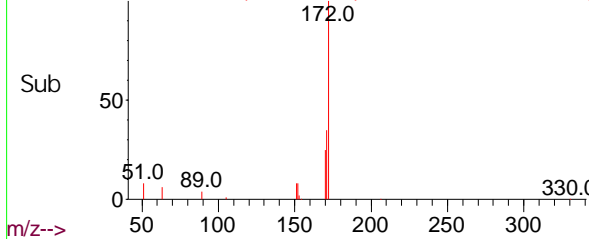
Tgt Ion: 172 Resp: 6030

| Ion | Ratio | Lower | Upper |
|-----|-------|-------|-------|
| 172 | 100   |       |       |
| 171 | 36.3  | 27.4  | 41.2  |
| 170 | 25.7  | 17.8  | 26.6  |

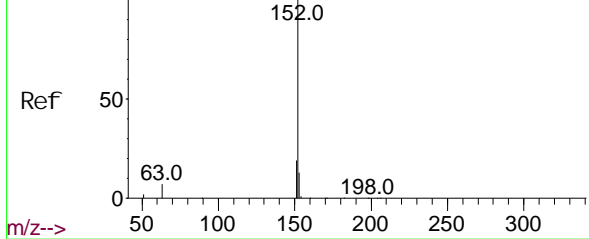
Abundance Scan 1170 (12.923 min): BN011950.D\data.ms



Abundance Scan 1170 (12.923 min): BN011950.D\data.ms (-1163) (-)



Abundance Scan 1258 (14.040 min): BN011885.D\data.ms (-1256) (-)

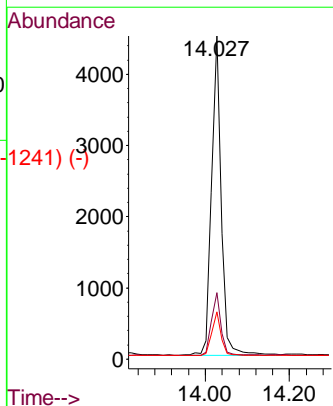
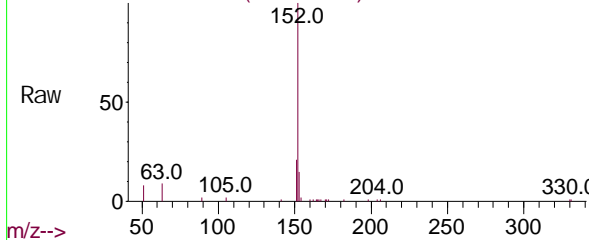


Acenaphthylene  
Concn: 0.33 ng  
RT: 14.027 min Scan# 1257  
Delta R.T. 0.000 min  
Lab File: BN011950.D  
Acq: 25 Sep 2020 15:12

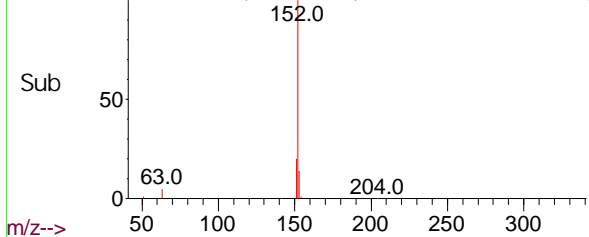
Tgt Ion: 152 Resp: 7110

| Ion | Ratio | Lower | Upper |
|-----|-------|-------|-------|
| 152 | 100   |       |       |
| 151 | 19.7  | 15.9  | 23.9  |
| 153 | 13.1  | 10.5  | 15.7  |

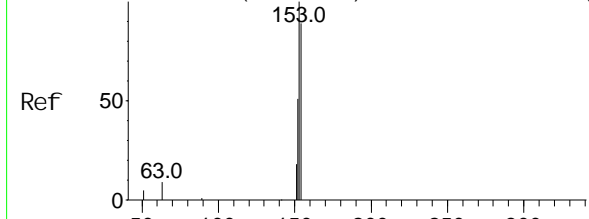
Abundance Scan 1257 (14.027 min): BN011950.D\data.ms



Abundance Scan 1257 (14.027 min): BN011950.D\data.ms (-1241) (-)



Abundance Scan 1285 (14.382 min): BN011885.D\data.ms (-1275) (-)



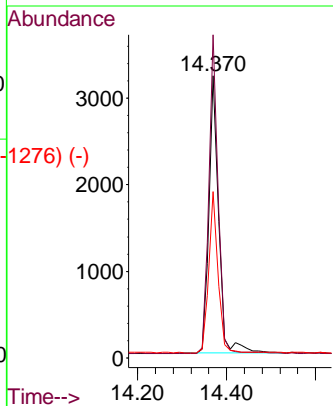
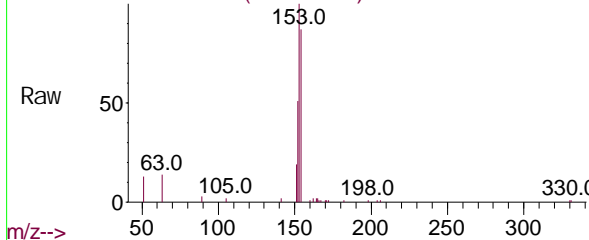
Acenaphthene  
Concen: 0.33 ng  
RT: 14.370 min Scan# 1284  
Delta R.T. 0.000 min  
Lab File: BN011950.D  
Acq: 25 Sep 2020 15:12

Instrument :  
BNA\_N  
Client Sampled :  
CS-31MS

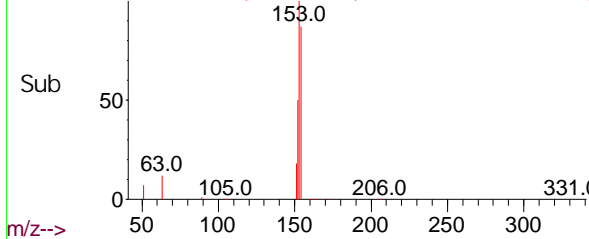
Tgt Ion: 154 Resp: 4841

| Ion | Ratio | Lower | Upper |
|-----|-------|-------|-------|
| 154 | 100   |       |       |
| 153 | 109.6 | 83.4  | 125.2 |
| 152 | 54.6  | 42.8  | 64.2  |

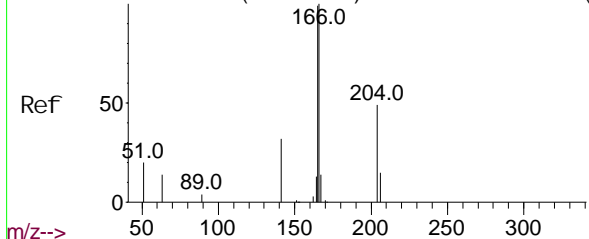
Abundance Scan 1284 (14.370 min): BN011950.D\data.ms



Abundance Scan 1284 (14.370 min): BN011950.D\data.ms (-1276) (-)



Abundance Scan 1363 (15.372 min): BN011885.D\data.ms (-1346) (-)

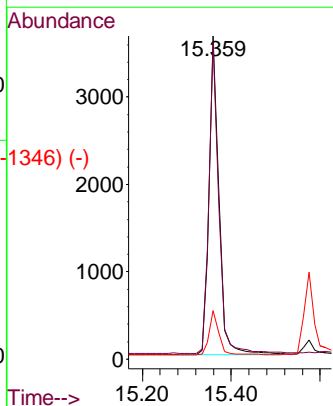
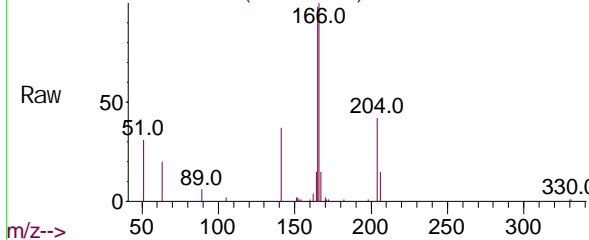


Fluorene  
Concen: 0.31 ng  
RT: 15.359 min Scan# 1362  
Delta R.T. 0.000 min  
Lab File: BN011950.D  
Acq: 25 Sep 2020 15:12

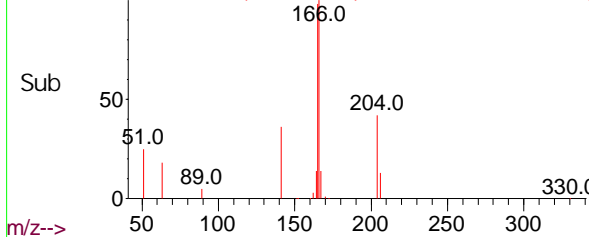
Tgt Ion: 166 Resp: 5615

| Ion | Ratio | Lower | Upper |
|-----|-------|-------|-------|
| 166 | 100   |       |       |
| 165 | 96.9  | 78.8  | 118.2 |
| 167 | 14.2  | 11.2  | 16.8  |

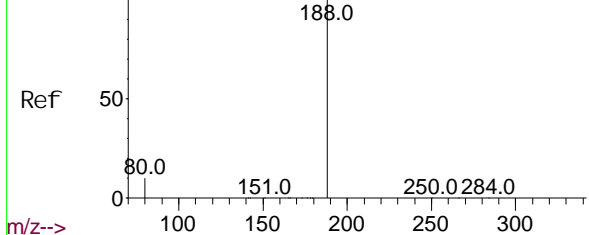
Abundance Scan 1362 (15.359 min): BN011950.D\data.ms



Abundance Scan 1362 (15.359 min): BN011950.D\data.ms (-1346) (-)



Abundance Scan 1500 (17.065 min): BN011885.D\data.ms (-1431) (-)



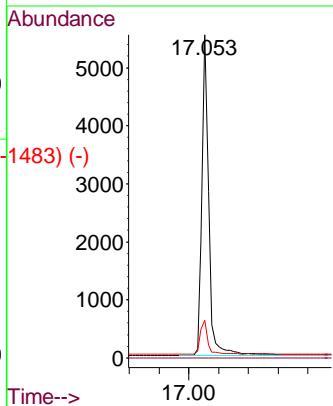
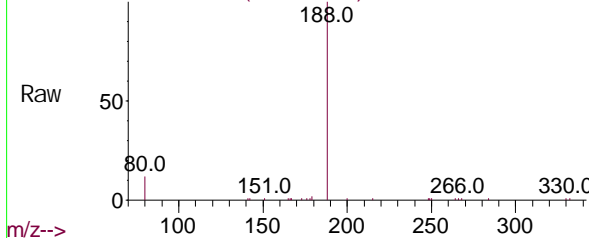
Phenanthrene-d10  
Concen: 0.40 ng  
RT: 17.053 min Scan# 1499  
Delta R.T. 0.000 min  
Lab File: BN011950.D  
Acq: 25 Sep 2020 15:12

Instrument :  
BNA\_N  
ClientSampleId :  
CS-31MS

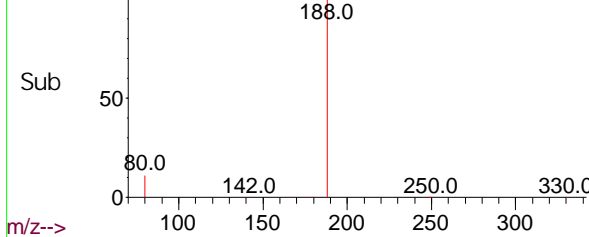
Tgt Ion: 188 Resp: 8717

| Ion | Ratio | Lower | Upper |
|-----|-------|-------|-------|
| 188 | 100   |       |       |
| 94  | 0.0   | 0.0   | 0.0   |
| 80  | 11.7  | 7.7   | 11.5# |

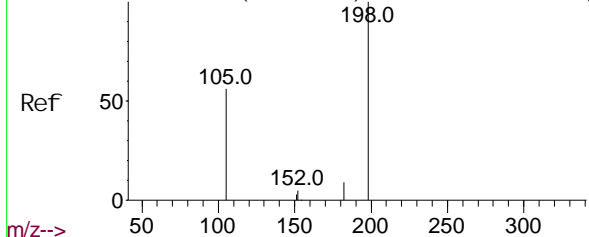
Abundance Scan 1499 (17.053 min): BN011950.D\data.ms



Abundance Scan 1499 (17.053 min): BN011950.D\data.ms (-1483) (-)



Abundance Scan 1369 (15.448 min): BN011885.D\data.ms (-1324) (-)

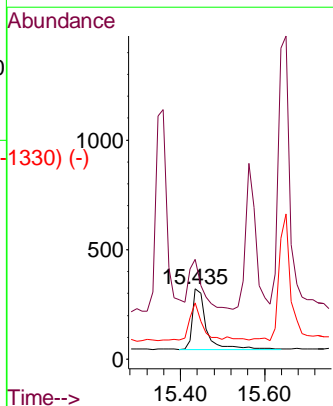
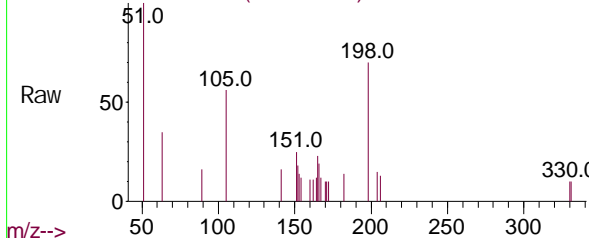


4,6-Dinitro-2-methyl phenol  
Concen: 0.38 ng  
RT: 15.435 min Scan# 1368  
Delta R.T. -0.013 min  
Lab File: BN011950.D  
Acq: 25 Sep 2020 15:12

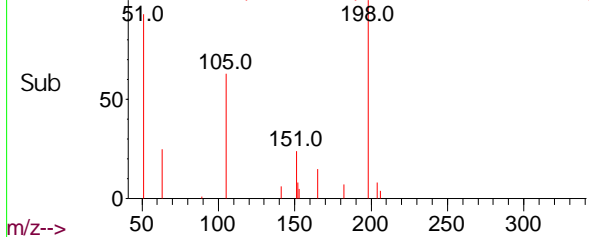
Tgt Ion: 198 Resp: 623

| Ion | Ratio | Lower | Upper |
|-----|-------|-------|-------|
| 198 | 100   |       |       |
| 51  | 141.9 | 45.0  | 67.4# |
| 105 | 80.1  | 30.4  | 45.6# |

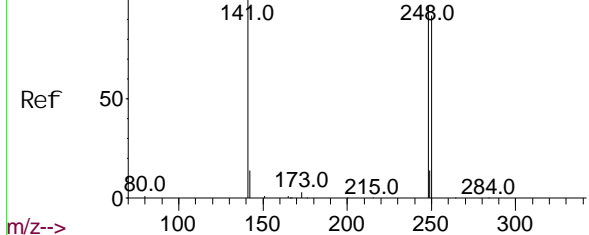
Abundance Scan 1368 (15.435 min): BN011950.D\data.ms



Abundance Scan 1368 (15.435 min): BN011950.D\data.ms (-1330) (-)



Abundance Scan 1434 (16.262 min): BN011885.D\data.ms (-1429) (-)



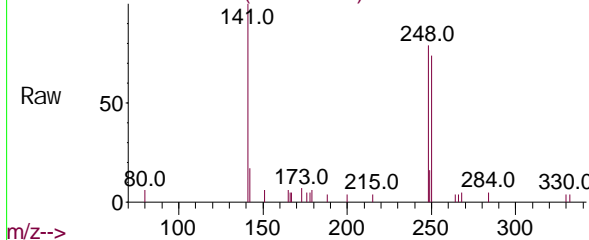
4-Bromophenyl -phenyl ether  
Concen: 0.31 ng  
RT: 16.250 min Scan# 1433  
Delta R.T. 0.000 min  
Lab File: BN011950.D  
Acq: 25 Sep 2020 15:12

Instrument :  
BNA\_N  
ClientSampled :  
CS-31MS

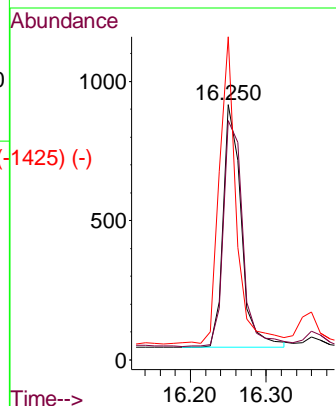
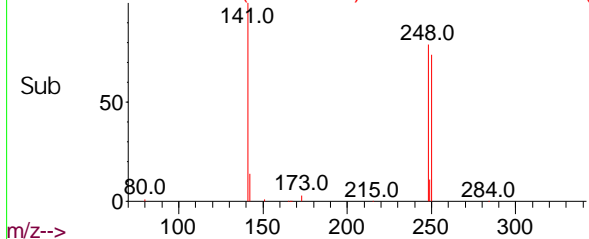
Tgt Ion: 248 Resp: 1438

| Ion | Ratio | Lower | Upper |
|-----|-------|-------|-------|
| 248 | 100   |       |       |
| 250 | 93.7  | 82.7  | 124.1 |
| 141 | 126.5 | 33.7  | 50.5# |

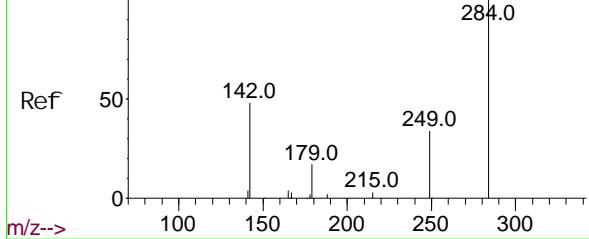
Abundance Scan 1433 (16.250 min): BN011950.D\data.ms



Abundance Scan 1433 (16.250 min): BN011950.D\data.ms (-1425) (-)



Abundance Scan 1443 (16.372 min): BN011885.D\data.ms (-1432) (-)

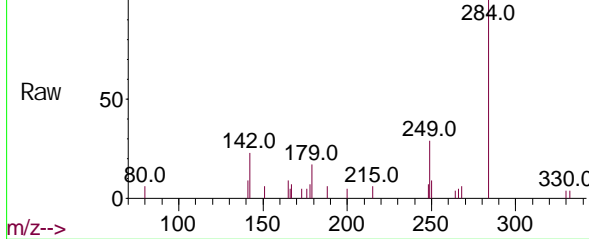


Hexachlorobenzene  
Concen: 0.31 ng  
RT: 16.372 min Scan# 1443  
Delta R.T. 0.000 min  
Lab File: BN011950.D  
Acq: 25 Sep 2020 15:12

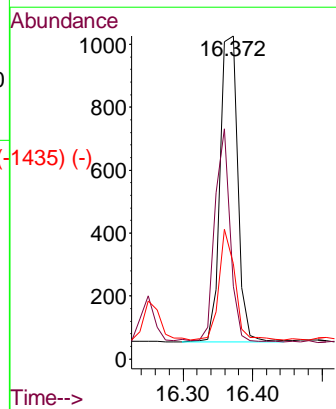
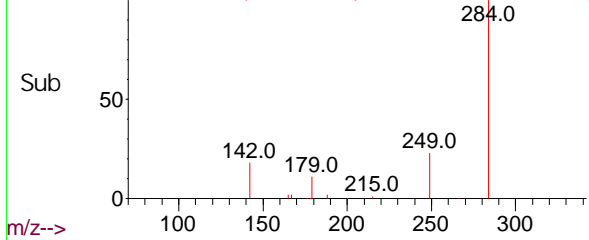
Tgt Ion: 284 Resp: 1692

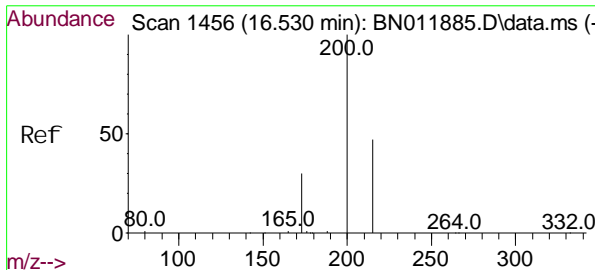
| Ion | Ratio | Lower | Upper |
|-----|-------|-------|-------|
| 284 | 100   |       |       |
| 142 | 60.7  | 32.4  | 48.6# |
| 249 | 32.9  | 26.8  | 40.2  |

Abundance Scan 1443 (16.372 min): BN011950.D\data.ms



Abundance Scan 1443 (16.372 min): BN011950.D\data.ms (-1435) (-)



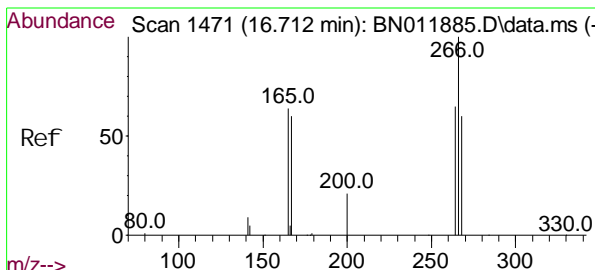
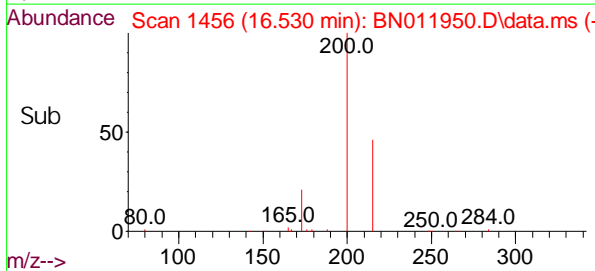
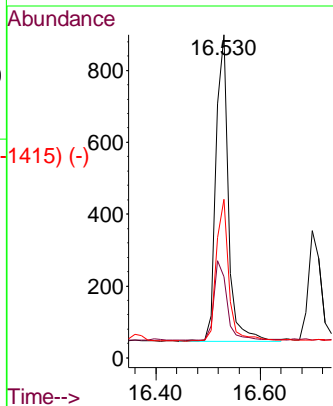
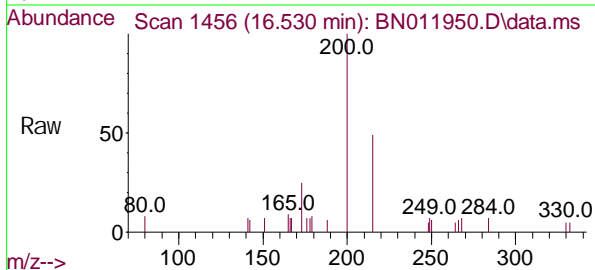


Scan 1456 (16.530 min): BN011885.D\data.ms (-1452) (-)  
 Atrazine  
 Concen: 0.32 ng  
 RT: 16.530 min Scan# 1456  
 Delta R.T. 0.000 min  
 Lab File: BN011950.D  
 Acq: 25 Sep 2020 15:12

**Instrument :**  
 BNA\_N  
**ClientSampled :**  
 CS-31MS

Tgt Ion: 200 Resp: 1418

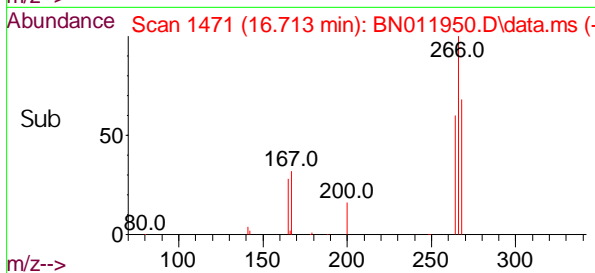
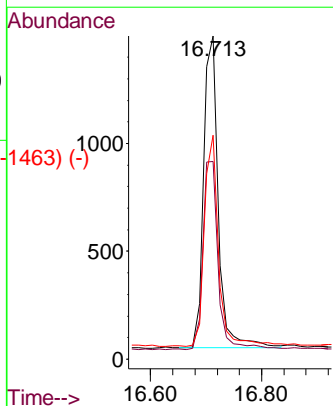
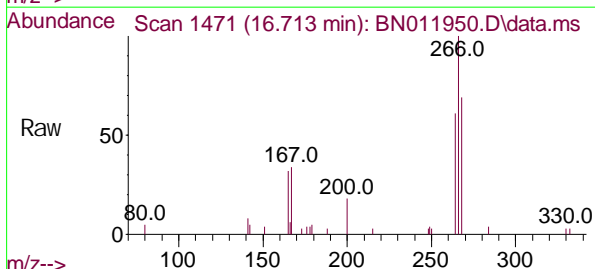
| Ion | Ratio | Lower | Upper |
|-----|-------|-------|-------|
| 200 | 100   |       |       |
| 173 | 25.1  | 18.7  | 28.1  |
| 215 | 49.1  | 40.2  | 60.4  |



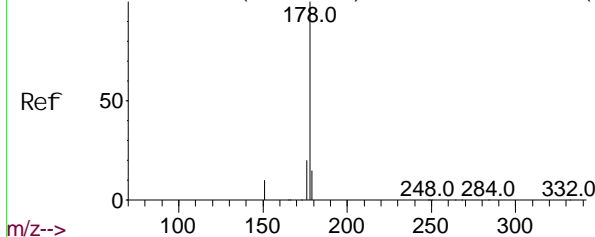
Scan 1471 (16.712 min): BN011885.D\data.ms (-1465) (-)  
 Pentachlorophenol  
 Concen: 1.01 ng  
 RT: 16.713 min Scan# 1471  
 Delta R.T. 0.000 min  
 Lab File: BN011950.D  
 Acq: 25 Sep 2020 15:12

Tgt Ion: 266 Resp: 2655

| Ion | Ratio | Lower | Upper |
|-----|-------|-------|-------|
| 266 | 100   |       |       |
| 264 | 62.1  | 51.2  | 76.8  |
| 268 | 64.7  | 52.4  | 78.6  |



Abundance Scan 1503 (17.102 min): BN011885.D\data.ms (-1495) (-)



Phenanthrene  
Concen: 0.31 ng  
RT: 17.090 min Scan# 1502  
Delta R.T. -0.012 min  
Lab File: BN011950.D  
Acq: 25 Sep 2020 15:12

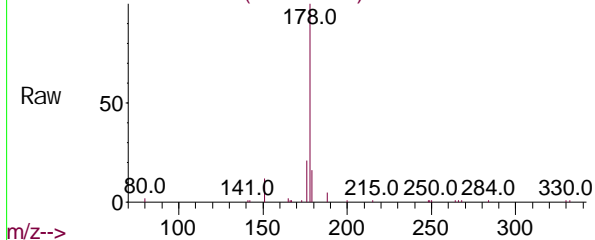
Instrument :  
BNA\_N  
ClientSampled :  
CS-31MS

m/z-->

Tgt Ion: 178 Resp: 8399

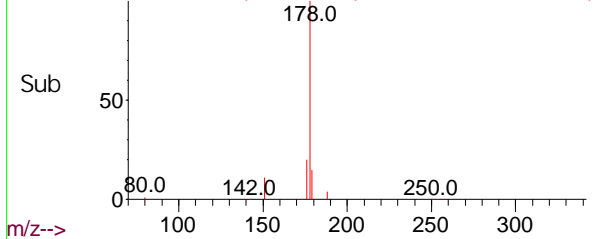
| Ion | Ratio | Lower | Upper |
|-----|-------|-------|-------|
| 178 | 100   |       |       |
| 176 | 19.6  | 15.1  | 22.7  |
| 179 | 15.4  | 12.3  | 18.5  |

Abundance Scan 1502 (17.090 min): BN011950.D\data.ms

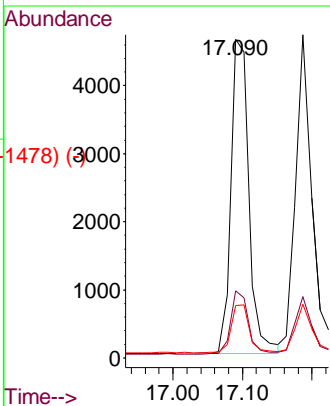


m/z-->

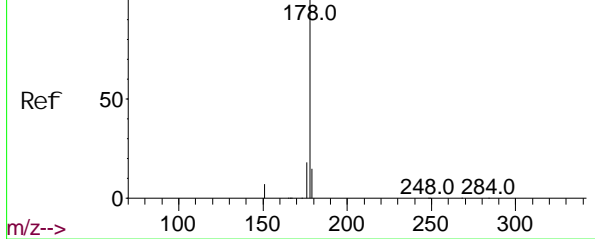
Abundance Scan 1502 (17.090 min): BN011950.D\data.ms (-1478) (3)



m/z-->



Abundance Scan 1511 (17.199 min): BN011885.D\data.ms (-1506) (-)



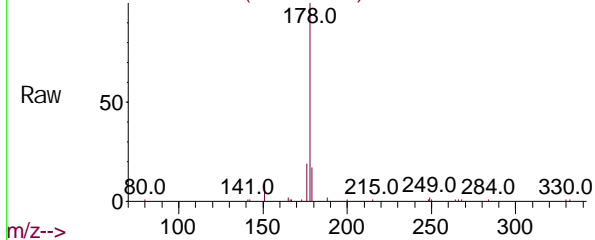
m/z-->

Anthracene  
Concen: 0.33 ng  
RT: 17.187 min Scan# 1510  
Delta R.T. 0.000 min  
Lab File: BN011950.D  
Acq: 25 Sep 2020 15:12

Tgt Ion: 178 Resp: 7777

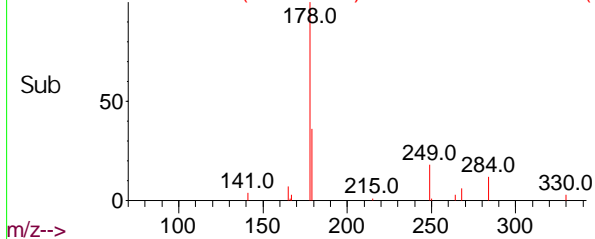
| Ion | Ratio | Lower | Upper |
|-----|-------|-------|-------|
| 178 | 100   |       |       |
| 176 | 18.3  | 14.6  | 21.8  |
| 179 | 15.6  | 12.4  | 18.6  |

Abundance Scan 1510 (17.187 min): BN011950.D\data.ms

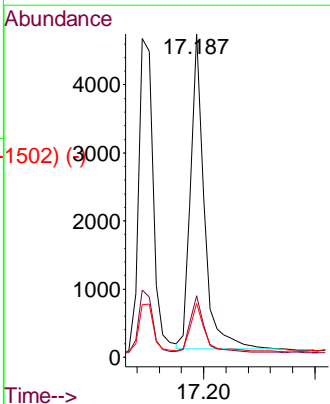


m/z-->

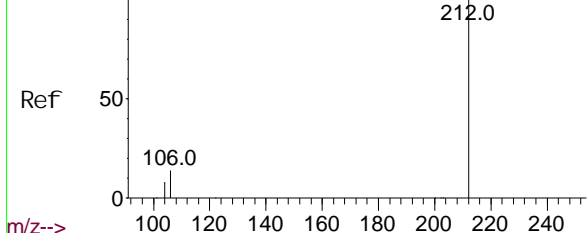
Abundance Scan 1510 (17.187 min): BN011950.D\data.ms (-1502) (3)



m/z-->



Abundance Scan 1797 (19.102 min): BN011885.D\data.ms (-1727) (-)

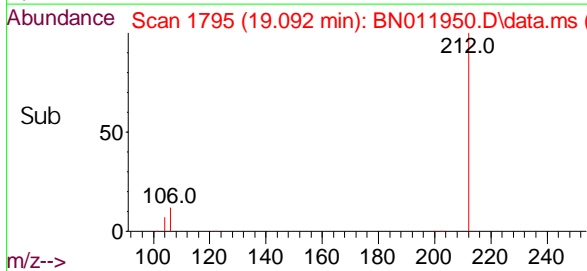
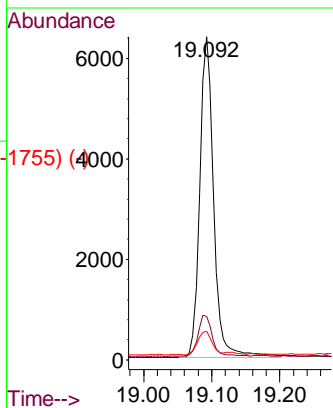
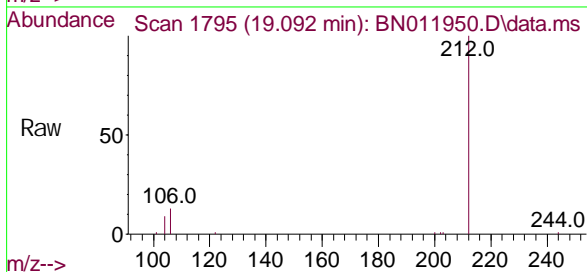


Fluoranthene-d10  
Concen: 0.35 ng  
RT: 19.092 min Scan# 1795  
Delta R.T. 0.000 min  
Lab File: BN011950.D  
Acq: 25 Sep 2020 15:12

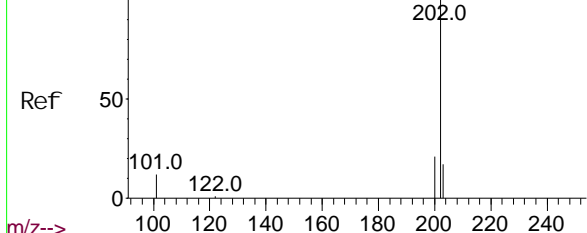
Instrument :  
BNA\_N  
ClientSampled :  
CS-31MS

Tgt Ion: 212 Resp: 9065

| Ion | Ratio | Lower | Upper |
|-----|-------|-------|-------|
| 212 | 100   |       |       |
| 106 | 13.4  | 6.4   | 9.6#  |
| 104 | 7.5   | 3.9   | 5.9#  |



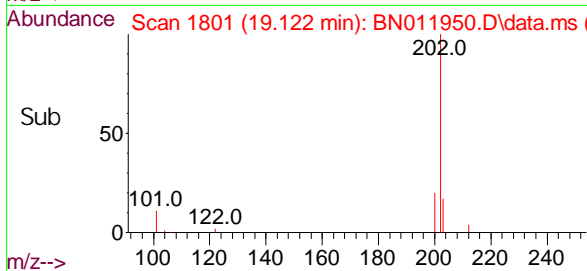
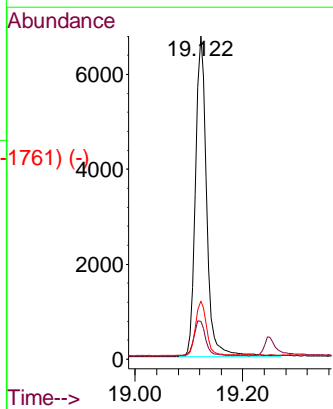
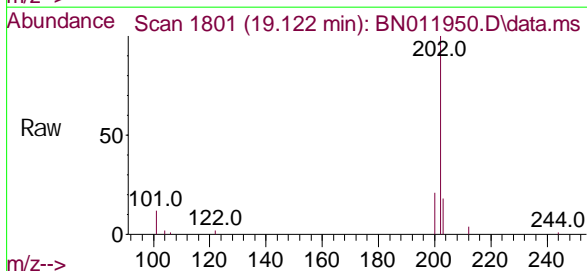
Abundance Scan 1803 (19.132 min): BN011885.D\data.ms (-1728) (-)



Fluoranthene  
Concen: 0.32 ng  
RT: 19.122 min Scan# 1801  
Delta R.T. 0.000 min  
Lab File: BN011950.D  
Acq: 25 Sep 2020 15:12

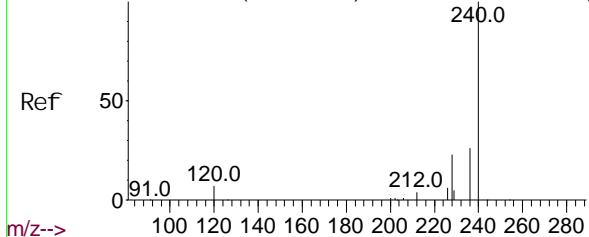
Tgt Ion: 202 Resp: 9664

| Ion | Ratio | Lower | Upper |
|-----|-------|-------|-------|
| 202 | 100   |       |       |
| 101 | 11.9  | 5.4   | 8.2#  |
| 203 | 16.7  | 13.8  | 20.6  |





Abundance Scan 2098 (21.269 min): BN011885.D\data.ms (-2029) (-)



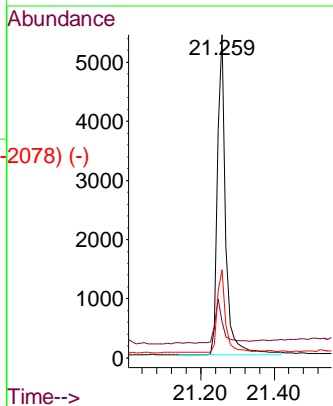
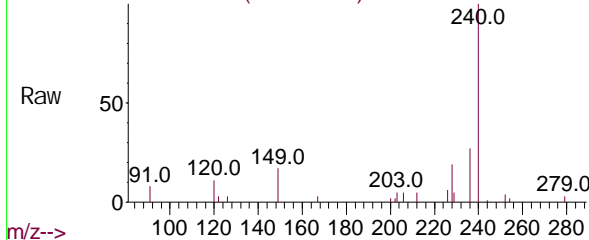
Chrysene-d12  
Concen: 0.40 ng  
RT: 21.259 min Scan# 2097  
Delta R. T. 0.000 min  
Lab File: BN011950.D  
Acq: 25 Sep 2020 15:12

Instrument :  
BNA\_N  
ClientSampled :  
CS-31MS

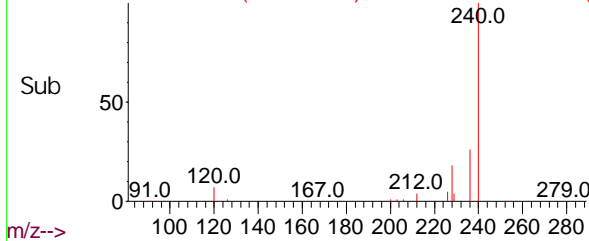
Tgt Ion: 240 Resp: 8422

| Ion | Ratio | Lower | Upper |
|-----|-------|-------|-------|
| 240 | 100   |       |       |
| 120 | 11.3  | 3.5   | 5.3#  |
| 236 | 27.3  | 20.5  | 30.7  |

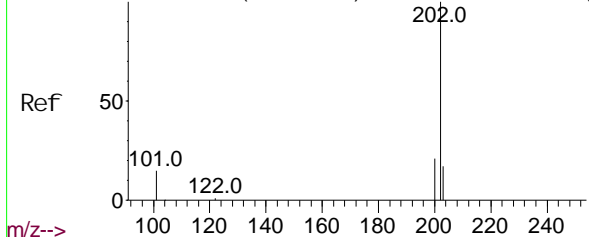
Abundance Scan 2097 (21.259 min): BN011950.D\data.ms



Abundance Scan 2097 (21.259 min): BN011950.D\data.ms (-2078) (-)



Abundance Scan 1876 (19.494 min): BN011885.D\data.ms (-1836) (-)

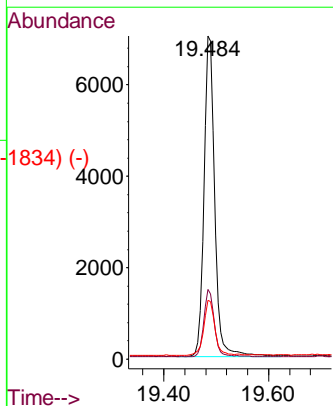
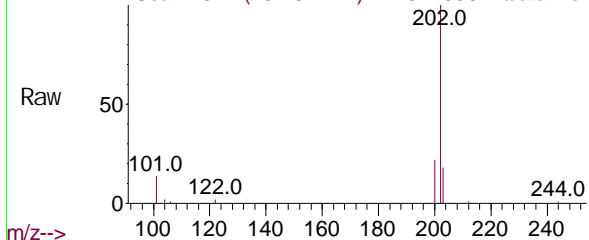


Pyrene  
Concen: 0.32 ng  
RT: 19.484 min Scan# 1874  
Delta R. T. 0.000 min  
Lab File: BN011950.D  
Acq: 25 Sep 2020 15:12

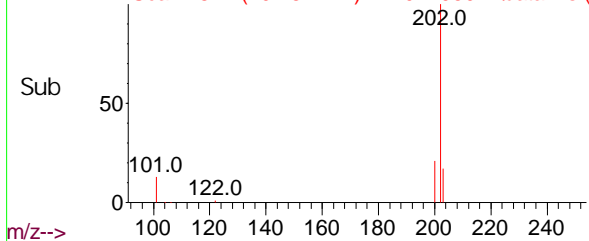
Tgt Ion: 202 Resp: 10097

| Ion | Ratio | Lower | Upper |
|-----|-------|-------|-------|
| 202 | 100   |       |       |
| 200 | 20.4  | 16.5  | 24.7  |
| 203 | 17.7  | 13.9  | 20.9  |

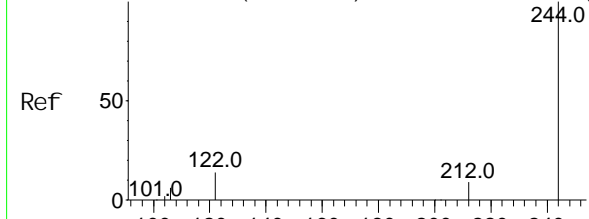
Abundance Scan 1874 (19.484 min): BN011950.D\data.ms



Abundance Scan 1874 (19.484 min): BN011950.D\data.ms (-1834) (-)



Abundance Scan 1919 (19.707 min): BN011885.D\data.ms (-1887) (-)



Terphenyl -d14  
Concen: 0.40 ng  
RT: 19.698 min Scan# 1917  
Delta R.T. 0.000 min  
Lab File: BN011950.D  
Acq: 25 Sep 2020 15:12

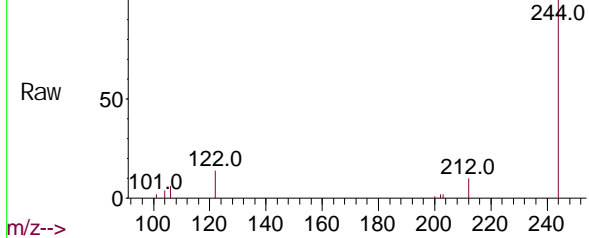
Instrument :  
BNA\_N  
ClientSampled :  
CS-31MS

m/z-->

Tgt Ion: 244 Resp: 7771

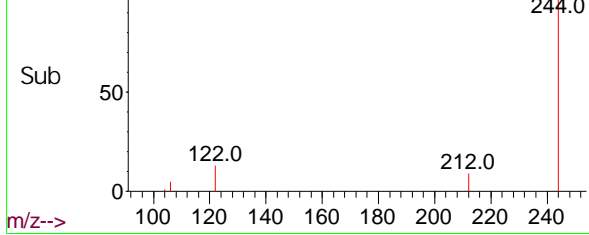
| Ion | Ratio | Lower | Upper |
|-----|-------|-------|-------|
| 244 | 100   |       |       |
| 212 | 10.2  | 7.3   | 10.9  |
| 122 | 14.4  | 7.8   | 11.6# |

Abundance Scan 1917 (19.698 min): BN011950.D\data.ms

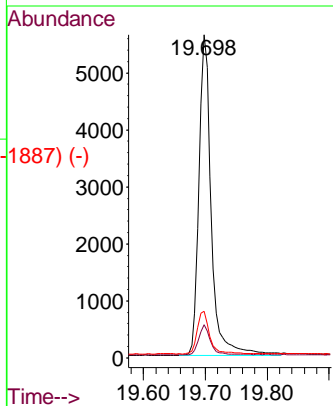


m/z-->

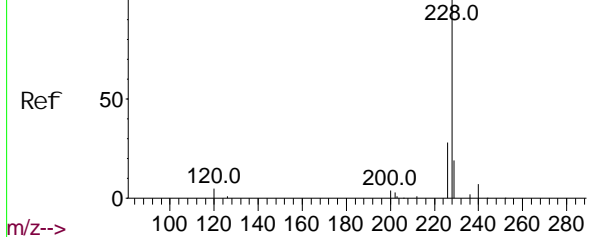
Abundance Scan 1917 (19.698 min): BN011950.D\data.ms (-1887) (-)



m/z-->



Abundance Scan 2096 (21.248 min): BN011885.D\data.ms (-2090) (-)



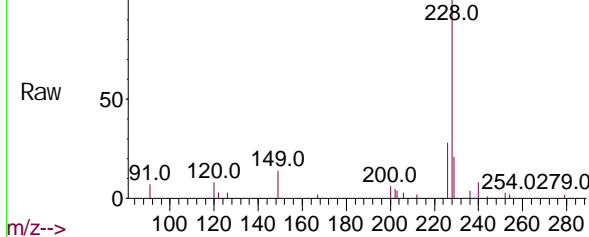
m/z-->

Benzo(a)anthracene  
Concen: 0.33 ng  
RT: 21.237 min Scan# 2095  
Delta R.T. 0.000 min  
Lab File: BN011950.D  
Acq: 25 Sep 2020 15:12

Tgt Ion: 228 Resp: 8985

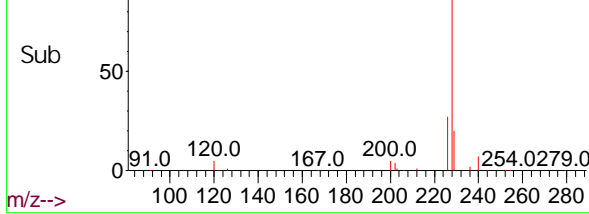
| Ion | Ratio | Lower | Upper |
|-----|-------|-------|-------|
| 228 | 100   |       |       |
| 226 | 27.6  | 21.0  | 31.4  |
| 229 | 20.6  | 16.0  | 24.0  |

Abundance Scan 2095 (21.237 min): BN011950.D\data.ms

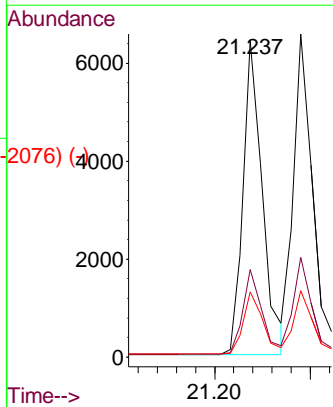


m/z-->

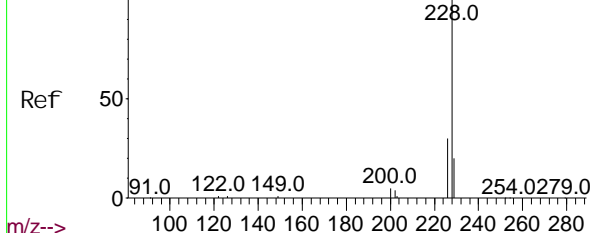
Abundance Scan 2095 (21.237 min): BN011950.D\data.ms (-2076) (-)



m/z-->



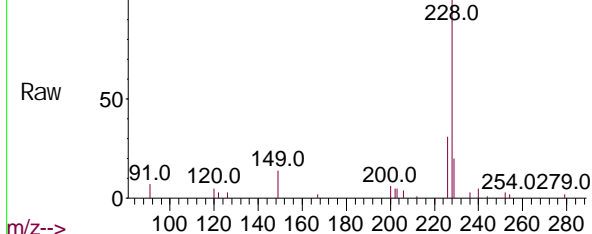
Abundance Scan 2101 (21.301 min): BN011885.D\data.ms (-2090) (-)



Chrysene  
Concen: 0.32 ng  
RT: 21.290 min Scan# 2100  
Delta R.T. 0.000 min  
Lab File: BN011950.D  
Acq: 25 Sep 2020 15:12

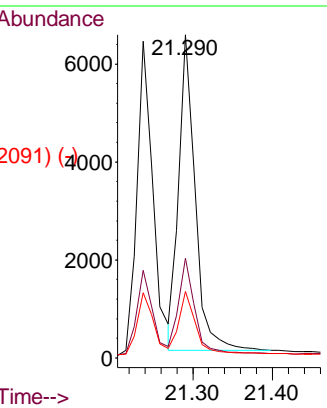
Instrument :  
BNA\_N  
ClientSampled :  
CS-31MS

Abundance Scan 2100 (21.290 min): BN011950.D\data.ms

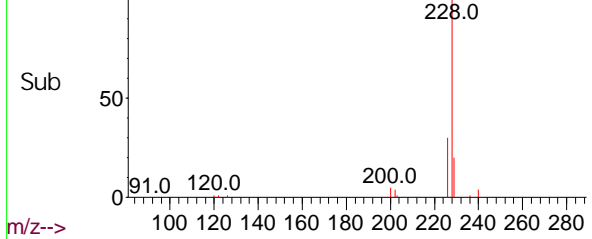


Tgt Ion: 228 Resp: 9181

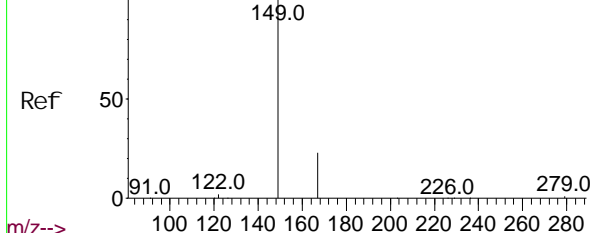
| Ion | Ratio | Lower | Upper |
|-----|-------|-------|-------|
| 228 | 100   |       |       |
| 226 | 30.8  | 23.3  | 34.9  |
| 229 | 20.5  | 15.8  | 23.8  |



Abundance Scan 2100 (21.290 min): BN011950.D\data.ms (-2091) (-)

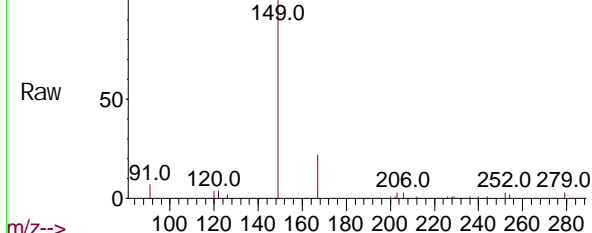


Abundance Scan 2090 (21.184 min): BN011885.D\data.ms (-2089) (-)



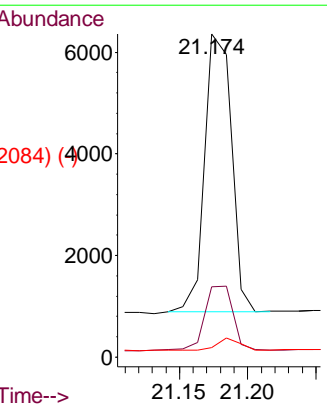
Bis(2-ethyl hexyl)phthalate  
Concen: 0.39 ng  
RT: 21.174 min Scan# 2089  
Delta R.T. 0.000 min  
Lab File: BN011950.D  
Acq: 25 Sep 2020 15:12

Abundance Scan 2089 (21.174 min): BN011950.D\data.ms

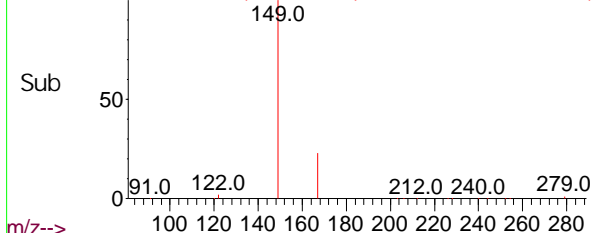


Tgt Ion: 149 Resp: 7444

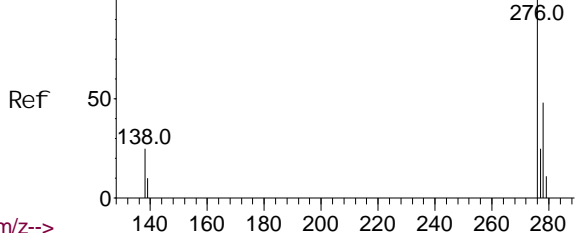
| Ion | Ratio | Lower | Upper |
|-----|-------|-------|-------|
| 149 | 100   |       |       |
| 167 | 24.1  | 23.6  | 35.4  |
| 279 | 3.8   | 4.0   | 6.0#  |



Abundance Scan 2089 (21.174 min): BN011950.D\data.ms (-2084) (-)



Abundance Scan 3169 (25.705 min): BN011885.D\data.ms (-3169) (-)



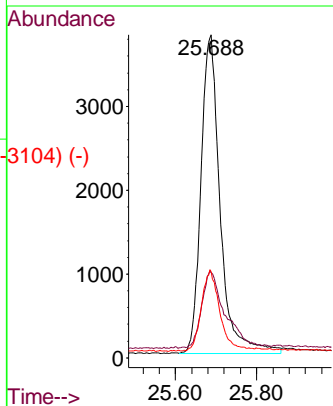
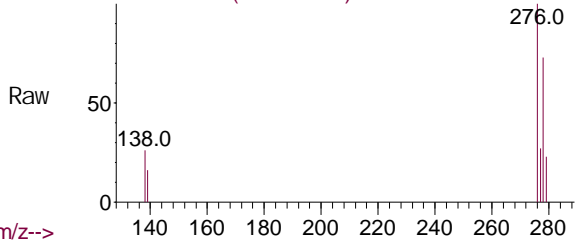
Indeno(1, 2, 3-cd)pyrene  
Concen: 0.38 ng  
RT: 25.688 min Scan# 3164  
Delta R. T. 0.007 min  
Lab File: BN011950.D  
Acq: 25 Sep 2020 15:12

Instrument :  
BNA\_N  
ClientSampled :  
CS-31MS

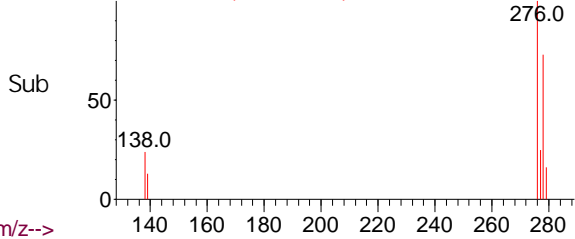
Tgt Ion: 276 Resp: 12462

| Ion | Ratio | Lower | Upper |
|-----|-------|-------|-------|
| 276 | 100   |       |       |
| 138 | 29.0  | 13.0  | 19.4# |
| 277 | 24.1  | 20.0  | 30.0  |

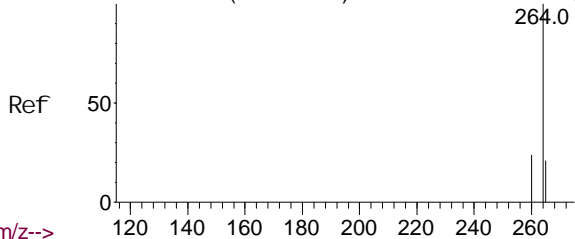
Abundance Scan 3164 (25.688 min): BN011950.D\data.ms



Abundance Scan 3164 (25.688 min): BN011950.D\data.ms (-3104) (-)



Abundance Scan 2521 (23.487 min): BN011885.D\data.ms (-2506) (-)

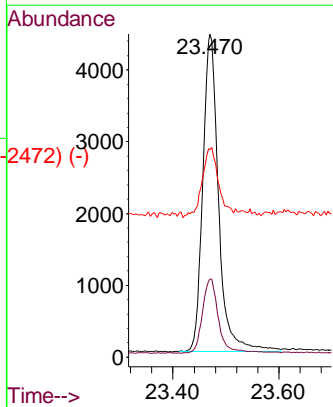
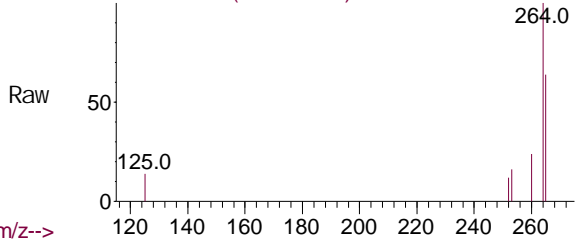


Perylene-d12  
Concen: 0.40 ng  
RT: 23.470 min Scan# 2516  
Delta R. T. 0.000 min  
Lab File: BN011950.D  
Acq: 25 Sep 2020 15:12

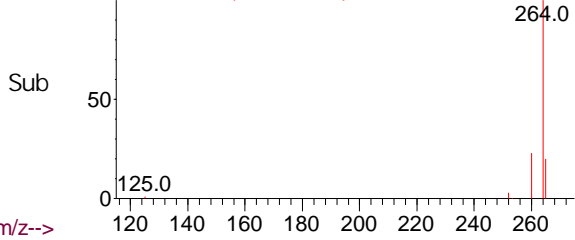
Tgt Ion: 264 Resp: 9143

| Ion | Ratio | Lower | Upper |
|-----|-------|-------|-------|
| 264 | 100   |       |       |
| 260 | 24.2  | 19.6  | 29.4  |
| 265 | 64.2  | 38.6  | 58.0# |

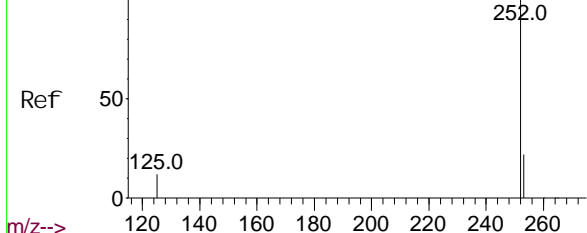
Abundance Scan 2516 (23.470 min): BN011950.D\data.ms



Abundance Scan 2516 (23.470 min): BN011950.D\data.ms (-2472) (-)



Abundance Scan 2327 (22.823 min): BN011885.D\data.ms (-2137) (-)



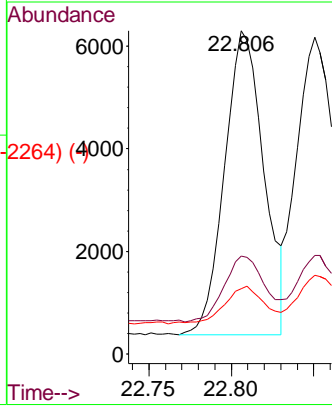
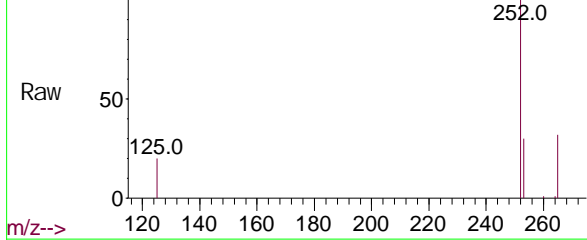
Benzo(b) fluoranthene  
Concen: 0.31 ng  
RT: 22.806 min Scan# 2322  
Delta R.T. 0.000 min  
Lab File: BN011950.D  
Acq: 25 Sep 2020 15:12

Instrument :  
BNA\_N  
ClientSampled :  
CS-31MS

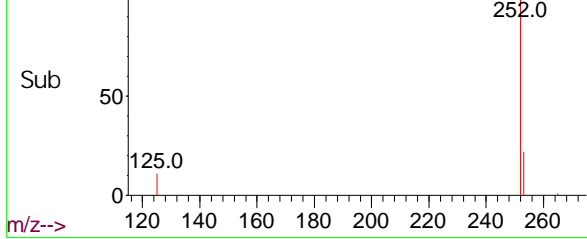
Tgt Ion: 252 Resp: 9848

| Ion | Ratio | Lower | Upper |
|-----|-------|-------|-------|
| 252 | 100   |       |       |
| 253 | 30.3  | 19.1  | 28.7# |
| 125 | 20.2  | 6.2   | 9.2#  |

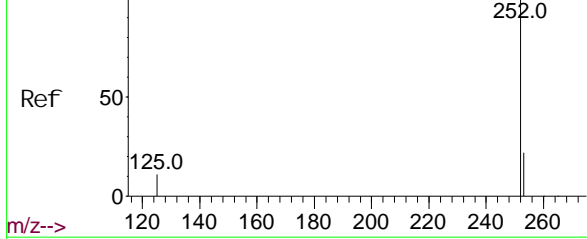
Abundance Scan 2322 (22.806 min): BN011950.D\data.ms



Abundance Scan 2322 (22.806 min): BN011950.D\data.ms (-2264) (4)



Abundance Scan 2340 (22.868 min): BN011885.D\data.ms (-2138) (-)

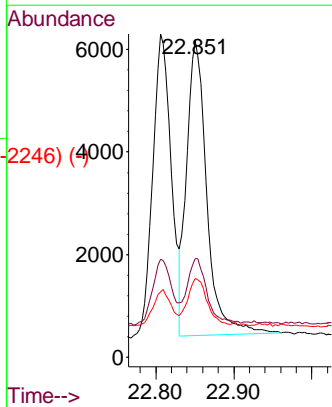
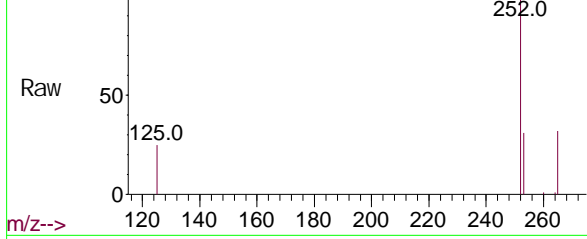


Benzo(k) fluoranthene  
Concen: 0.30 ng  
RT: 22.851 min Scan# 2335  
Delta R.T. 0.003 min  
Lab File: BN011950.D  
Acq: 25 Sep 2020 15:12

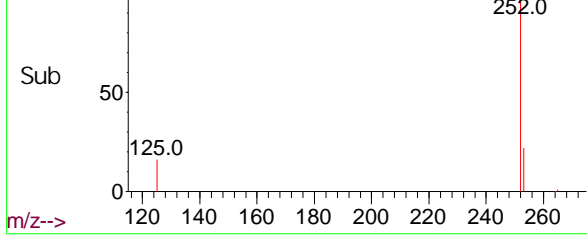
Tgt Ion: 252 Resp: 10361

| Ion | Ratio | Lower | Upper |
|-----|-------|-------|-------|
| 252 | 100   |       |       |
| 253 | 31.1  | 19.3  | 28.9# |
| 125 | 24.8  | 6.0   | 9.0#  |

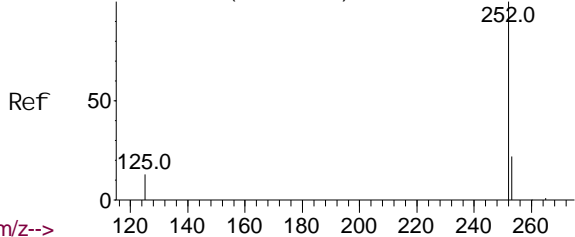
Abundance Scan 2335 (22.851 min): BN011950.D\data.ms



Abundance Scan 2335 (22.851 min): BN011950.D\data.ms (-2246) (4)



Abundance Scan 2493 (23.391 min): BN011885.D\data.ms (-2489) (-)



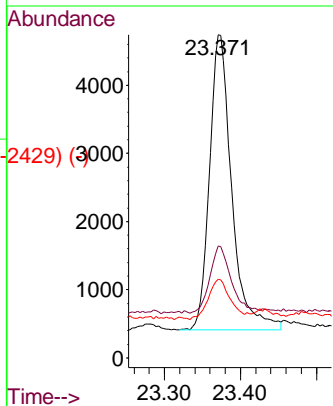
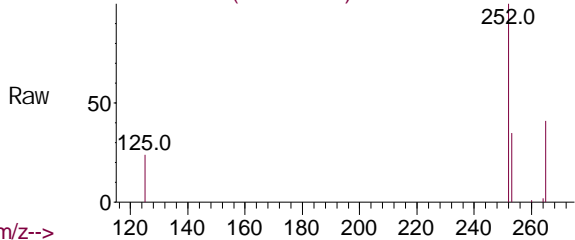
Benzo(a)pyrene  
Concen: 0.30 ng  
RT: 23.371 min Scan# 2487  
Delta R.T. 0.000 min  
Lab File: BN011950.D  
Acq: 25 Sep 2020 15:12

Instrument :  
BNA\_N  
ClientSampled :  
CS-31MS

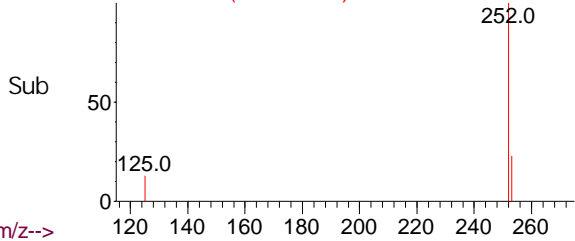
Tgt Ion: 252 Resp: 8786

| Ion | Ratio | Lower | Upper |
|-----|-------|-------|-------|
| 252 | 100   |       |       |
| 253 | 34.7  | 19.8  | 29.6# |
| 125 | 24.4  | 7.3   | 10.9# |

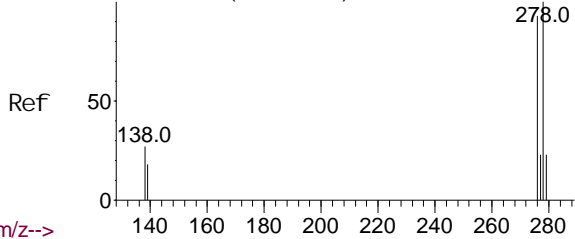
Abundance Scan 2487 (23.371 min): BN011950.D\data.ms



Abundance Scan 2487 (23.371 min): BN011950.D\data.ms (-2429) (-)



Abundance Scan 3175 (25.726 min): BN011885.D\data.ms (-3146) (-)

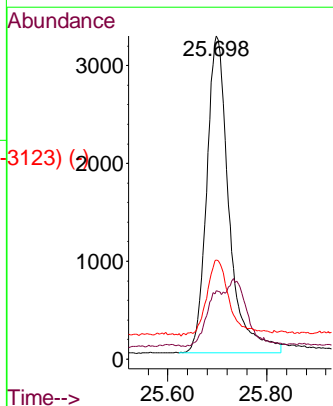
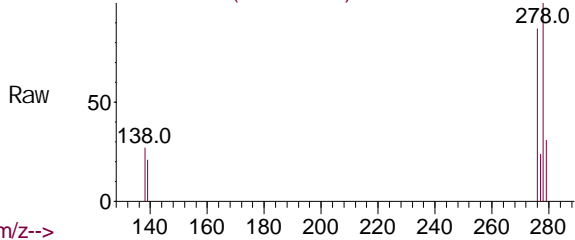


Di benzo(a, h)anthracene  
Concen: 0.34 ng  
RT: 25.698 min Scan# 3167  
Delta R.T. 0.000 min  
Lab File: BN011950.D  
Acq: 25 Sep 2020 15:12

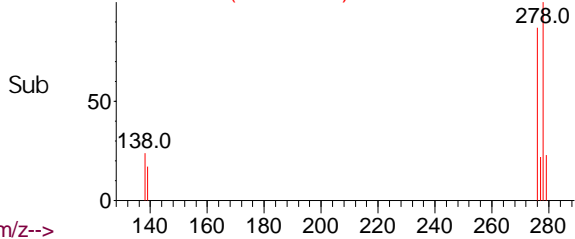
Tgt Ion: 278 Resp: 10117

| Ion | Ratio | Lower | Upper |
|-----|-------|-------|-------|
| 278 | 100   |       |       |
| 139 | 21.2  | 8.6   | 13.0# |
| 279 | 30.7  | 19.8  | 29.8# |

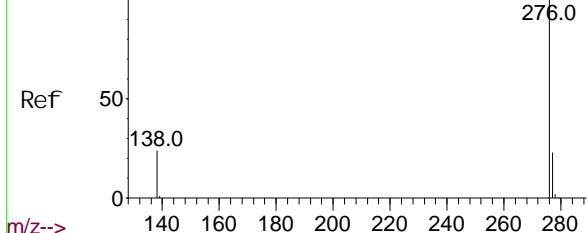
Abundance Scan 3167 (25.698 min): BN011950.D\data.ms



Abundance Scan 3167 (25.698 min): BN011950.D\data.ms (-3123) (-)



Abundance Scan 3368 (26.386 min): BN011885.D\data.ms (-3341) (-)



Benzo(g, h, i)peryl ene  
 Concen: 0.35 ng  
 RT: 26.356 min Scan# 3359  
 Del ta R. T. -0.003 min  
 Lab Fi le: BN011950.D  
 Acq: 25 Sep 2020 15:12

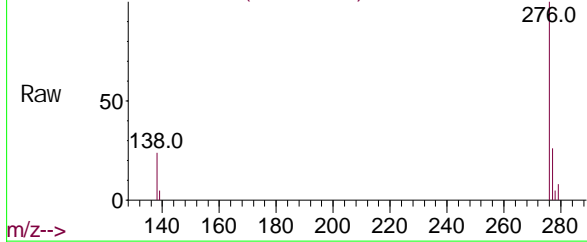
**Instrument :**  
 BNA\_N  
**ClientSampled :**  
 CS-31MS

m/z-->

Tgt Ion: 276 Resp: 11316

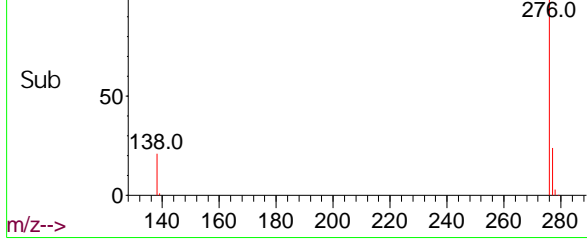
| Ion | Ratio | Lower | Upper |
|-----|-------|-------|-------|
| 276 | 100   |       |       |
| 277 | 25.5  | 19.4  | 29.0  |
| 138 | 24.0  | 11.3  | 16.9# |

Abundance Scan 3359 (26.356 min): BN011950.D\data.ms



m/z-->

Abundance Scan 3359 (26.356 min): BN011950.D\data.ms (-3302) (-)



m/z-->

