

Data Path : Z:\svoasrv\HPCHEM1\BNA_N\Data\BN092820\
 Data File : BN012000.D
 Acq On : 29 Sep 2020 02:05
 Operator : CG/JU
 Sample : L4119-05
 Misc :
 ALS Vial : 21 Sample Multiplier: 1

Instrument :
 BNA_N
 ClientSampleId :
 RE122D2-20200921

Quant Time: Sep 29 04:29:27 2020
 Quant Method : Z:\svoasrv\HPCHEM1\BNA_N\Methods\8270-SIM-BN092320.M
 Quant Title : ASP BNA STANDARDS FOR 5 POINT CALIBRATION
 QLast Update : Fri Sep 25 11:18:41 2020
 Response via : Initial Calibration

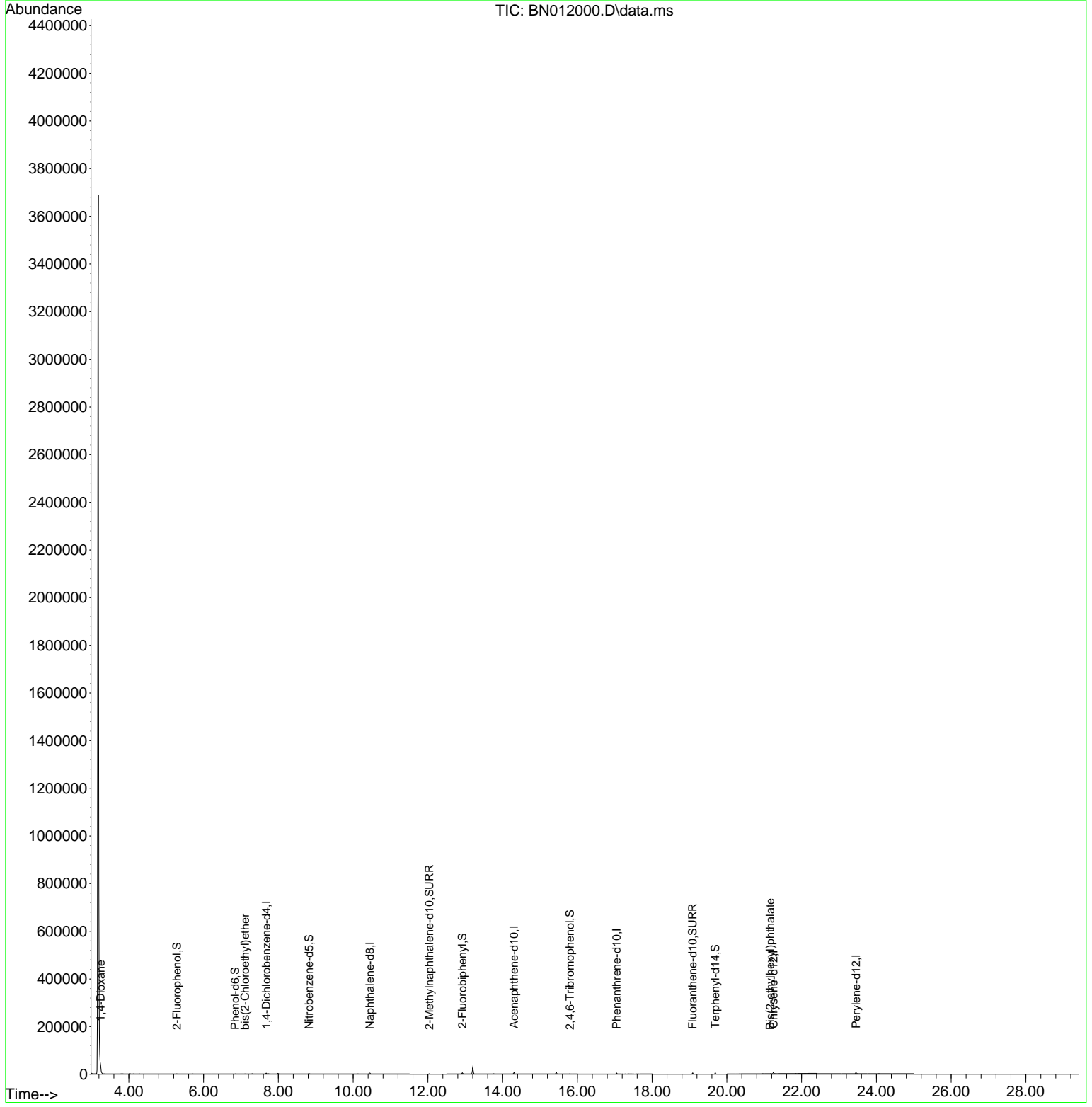
Compound	R.T.	QIon	Response	Conc	Units	Dev(Min)
Internal Standards						
1) 1,4-Dichlorobenzene-d4	7.675	152	1399	0.40	ng	# 0.00
7) Naphthalene-d8	10.453	136	5923	0.40	ng	# 0.00
13) Acenaphthene-d10	14.306	164	3350	0.40	ng	0.00
19) Phenanthrene-d10	17.053	188	6462	0.40	ng	0.00
29) Chrysene-d12	21.248	240	6002	0.40	ng	#-0.01
36) Perylene-d12	23.456	264	6286	0.40	ng	#-0.01
System Monitoring Compounds						
4) 2-Fluorophenol	5.283	112	478	0.10	ng	0.00
5) Phenol-d6	6.845	99	295	0.05	ng	0.00
8) Nitrobenzene-d5	8.818	82	1996	0.33	ng	0.00
11) 2-Methylnaphthalene-d10	12.037	152	2646	0.28	ng	0.00
14) 2,4,6-Tribromophenol	15.803	330	550	0.34	ng	0.00
15) 2-Fluorobiphenyl	12.923	172	4369	0.34	ng	-0.01
27) Fluoranthene-d10	19.087	212	6259	0.33	ng	0.00
31) Terphenyl-d14	19.688	244	6512	0.47	ng	-0.01
Target Compounds						Qvalue
2) 1,4-Dioxane	3.245	88	9968	4.09	ng	# 89
6) bis(2-Chloroethyl)ether	7.111	93	195	0.04	ng	# 77
34) Bis(2-ethylhexyl)phtha...	21.163	149	956	0.07	ng	# 89

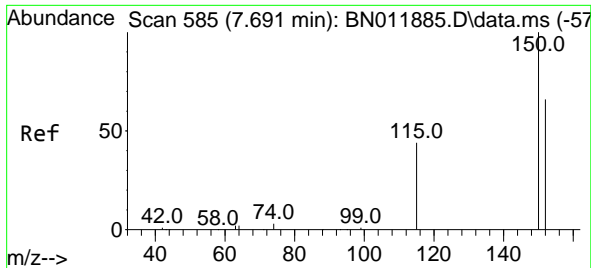
(#) = qualifier out of range (m) = manual integration (+) = signals summed

Data Path : Z:\svoasrv\HPCHEM1\BNA_N\Data\BN092820\
 Data File : BN012000.D
 Acq On : 29 Sep 2020 02:05
 Operator : CG/JU
 Sample : L4119-05
 Misc :
 ALS Vial : 21 Sample Multiplier: 1

Instrument :
 BNA_N
ClientSampleId :
 RE122D2-20200921

Quant Time: Sep 29 04:29:27 2020
 Quant Method : Z:\svoasrv\HPCHEM1\BNA_N\Methods\8270-SIM-BN092320.M
 Quant Title : ASP BNA STANDARDS FOR 5 POINT CALIBRATION
 QLast Update : Fri Sep 25 11:18:41 2020
 Response via : Initial Calibration

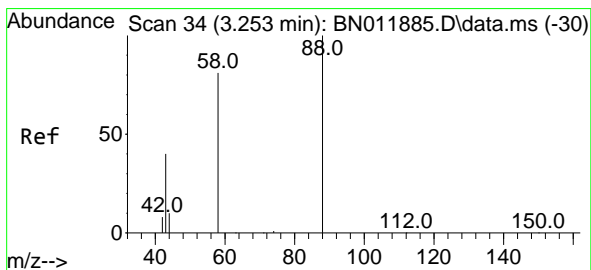
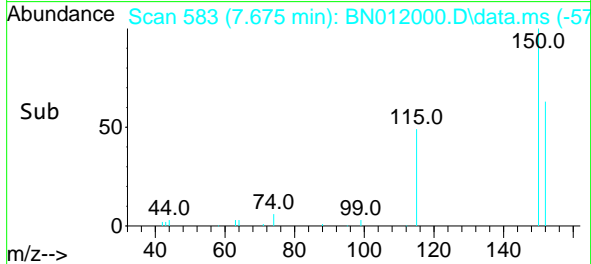
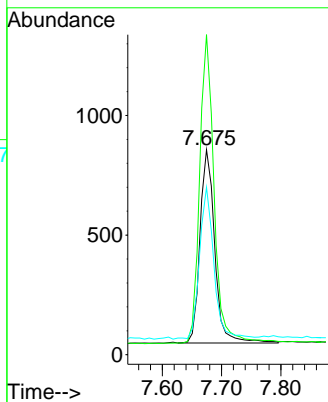
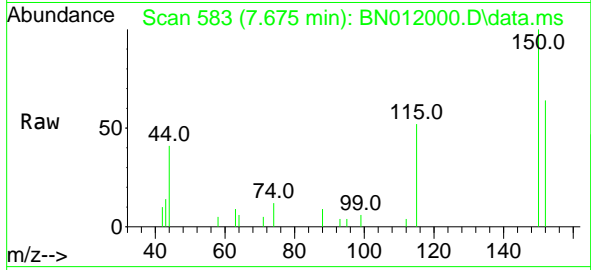




#1
 1,4-Dichlorobenzene-d4
 Concen: 0.40 ng
 RT: 7.675 min Scan# 583
 Delta R.T. -0.008 min
 Lab File: BN012000.D
 Acq: 29 Sep 2020 02:05

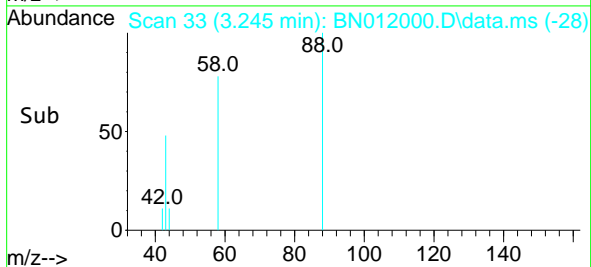
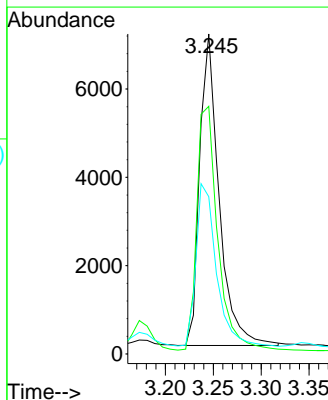
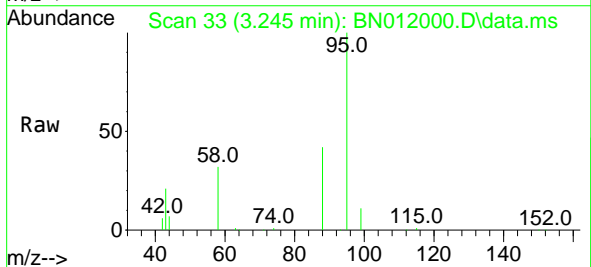
Instrument :
 BNA_N
 ClientSampleId :
 RE122D2-20200921

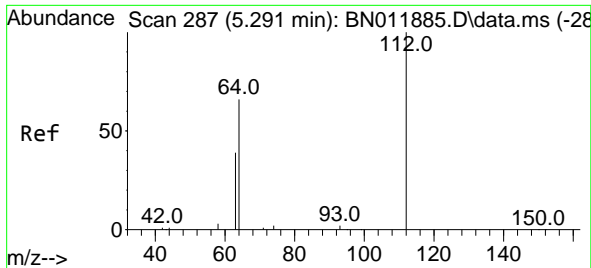
Tgt Ion:152 Resp: 1399
 Ion Ratio Lower Upper
 152 100
 150 156.1 118.3 177.5
 115 81.7 51.3 76.9#



#2
 1,4-Dioxane
 Concen: 4.09 ng
 RT: 3.245 min Scan# 33
 Delta R.T. -0.008 min
 Lab File: BN012000.D
 Acq: 29 Sep 2020 02:05

Tgt Ion: 88 Resp: 9968
 Ion Ratio Lower Upper
 88 100
 58 84.3 63.3 94.9
 43 54.8 33.0 49.4#

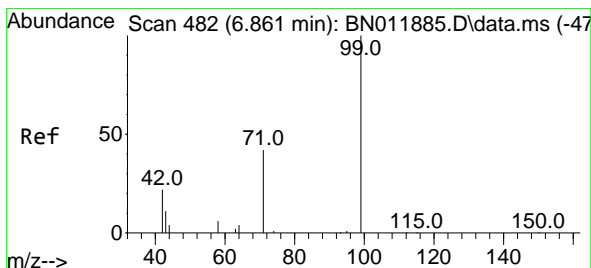
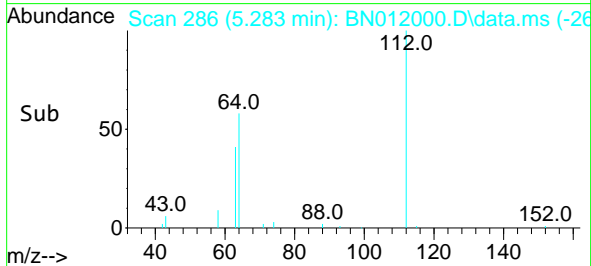
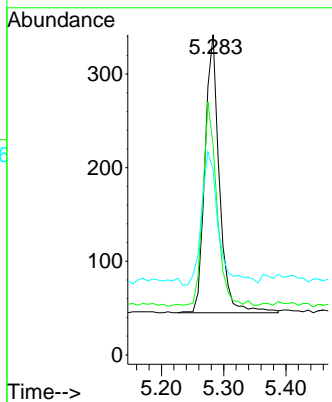
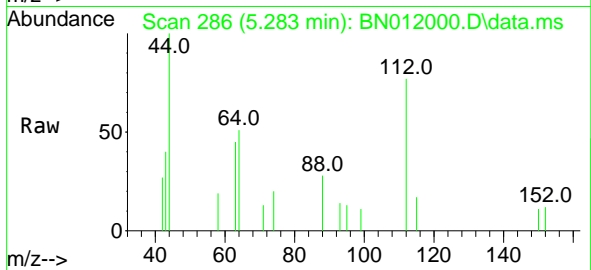




#4
 2-Fluorophenol
 Concen: 0.10 ng
 RT: 5.283 min Scan# 286
 Delta R.T. -0.000 min
 Lab File: BN012000.D
 Acq: 29 Sep 2020 02:05

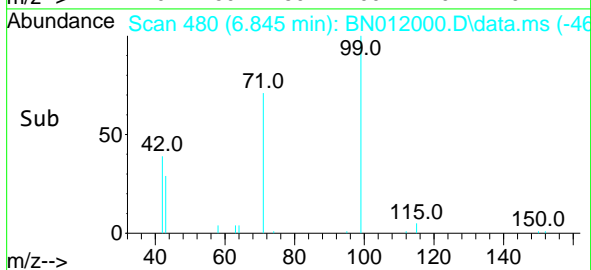
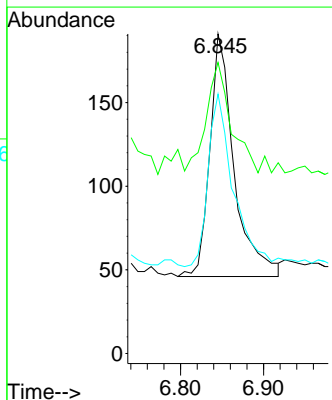
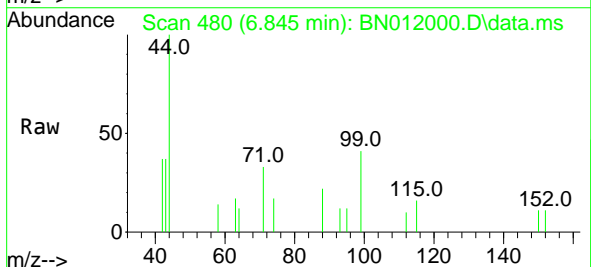
Instrument :
 BNA_N
 ClientSampleId :
 RE122D2-20200921

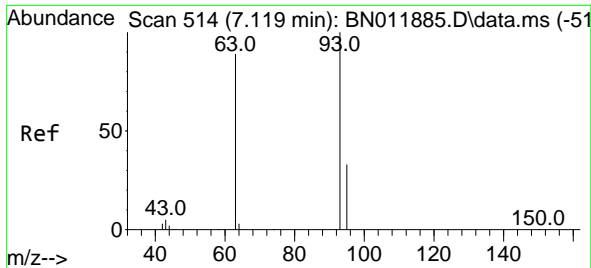
Tgt Ion	Resp	Lower	Upper
112	100		
64	73.0	49.0	73.6
63	57.1	31.8	47.6#



#5
 Phenol-d6
 Concen: 0.05 ng
 RT: 6.845 min Scan# 480
 Delta R.T. -0.008 min
 Lab File: BN012000.D
 Acq: 29 Sep 2020 02:05

Tgt Ion	Resp	Lower	Upper
99	100		
42	47.1	23.4	35.0#
71	76.6	38.1	57.1#

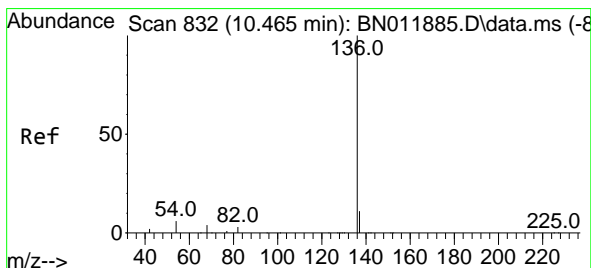
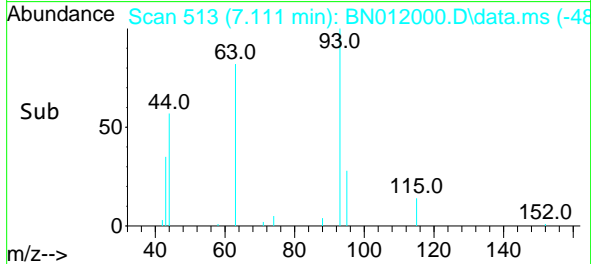
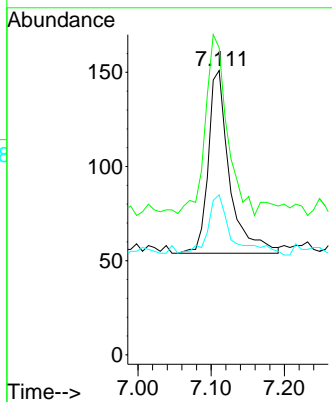
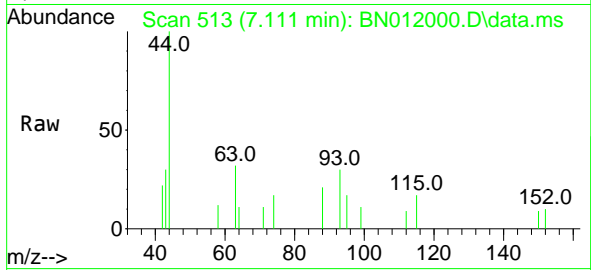




#6
 bis(2-Chloroethyl)ether
 Concen: 0.04 ng
 RT: 7.111 min Scan# 513
 Delta R.T. -0.000 min
 Lab File: BN012000.D
 Acq: 29 Sep 2020 02:05

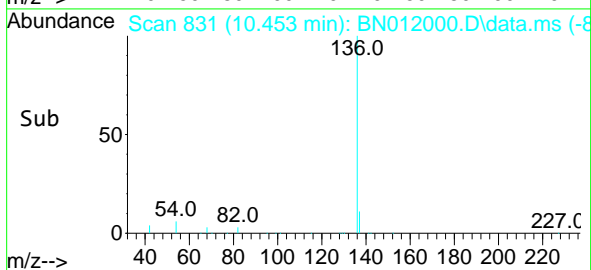
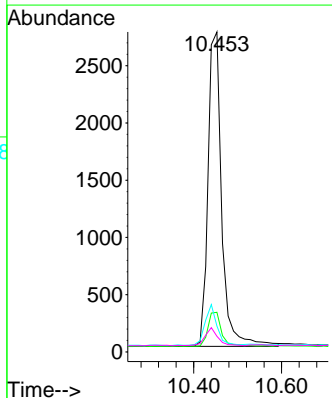
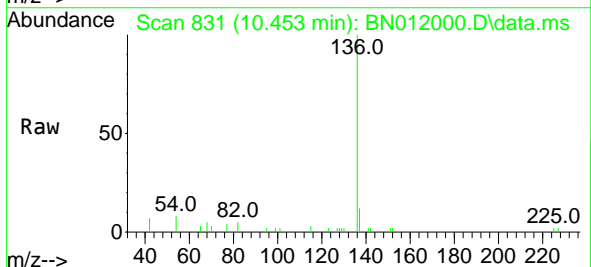
Instrument :
 BNA_N
 ClientSampleId :
 RE122D2-20200921

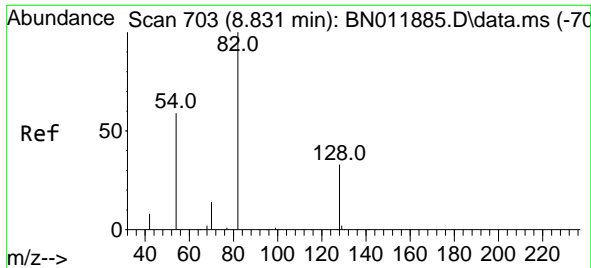
Tgt Ion	Resp	Lower	Upper
93	195		
93	100		
63	102.1	61.1	91.7#
95	36.4	25.5	38.3



#7
 Naphthalene-d8
 Concen: 0.40 ng
 RT: 10.453 min Scan# 831
 Delta R.T. -0.000 min
 Lab File: BN012000.D
 Acq: 29 Sep 2020 02:05

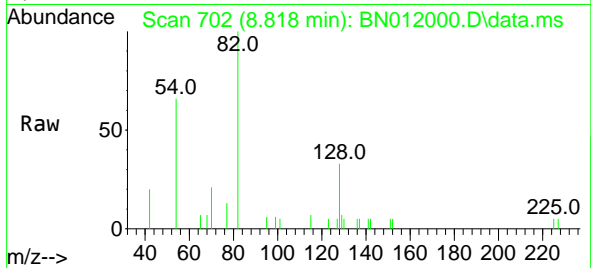
Tgt Ion	Resp	Lower	Upper
136	5923		
136	100		
137	12.4	9.5	14.3
54	8.1	5.6	8.4
68	4.9	3.2	4.8#



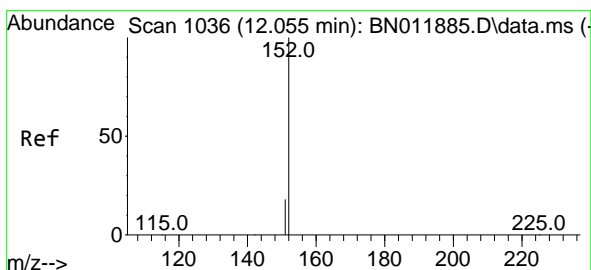
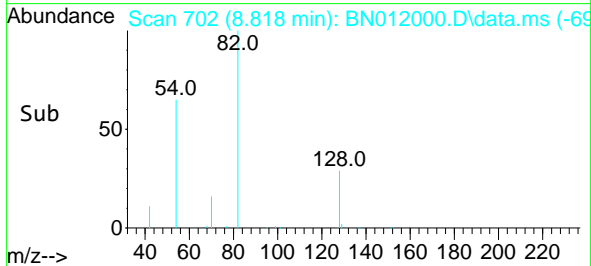
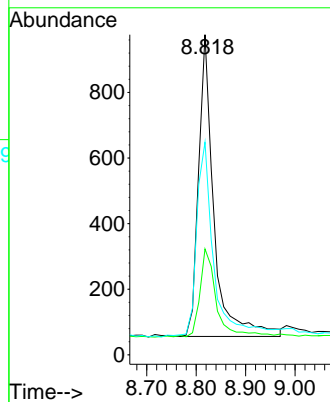


#8
 Nitrobenzene-d5
 Concen: 0.33 ng
 RT: 8.818 min Scan# 702
 Delta R.T. -0.000 min
 Lab File: BN012000.D
 Acq: 29 Sep 2020 02:05

Instrument :
 BNA_N
 ClientSampleId :
 RE122D2-20200921

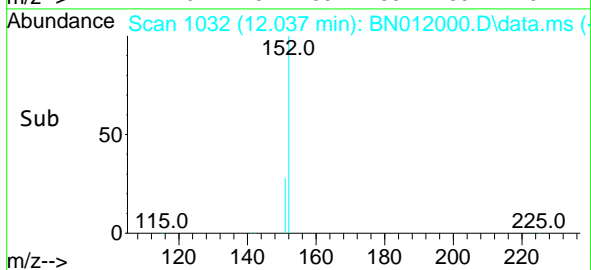
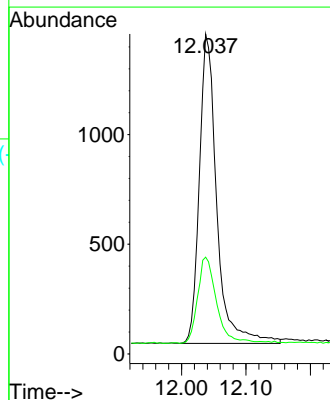
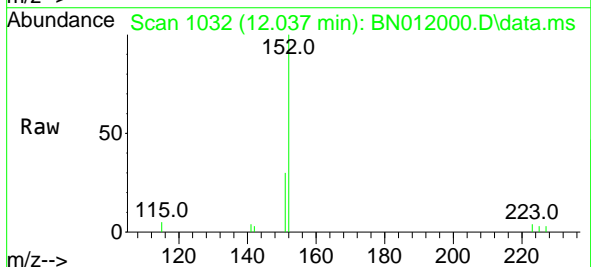


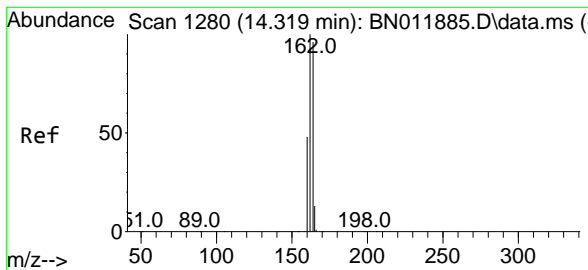
Tgt Ion: 82 Resp: 1996
 Ion Ratio Lower Upper
 82 100
 128 33.1 34.2 51.2#
 54 66.4 43.1 64.7#



#11
 2-Methylnaphthalene-d10
 Concen: 0.28 ng
 RT: 12.037 min Scan# 1032
 Delta R.T. -0.009 min
 Lab File: BN012000.D
 Acq: 29 Sep 2020 02:05

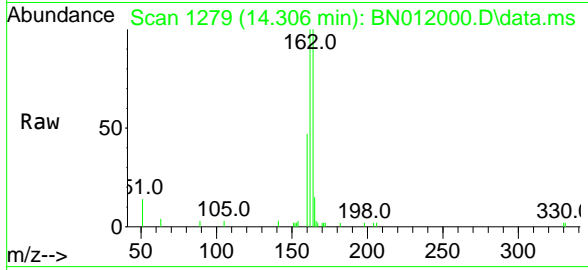
Tgt Ion: 152 Resp: 2646
 Ion Ratio Lower Upper
 152 100
 151 30.2 16.7 25.1#





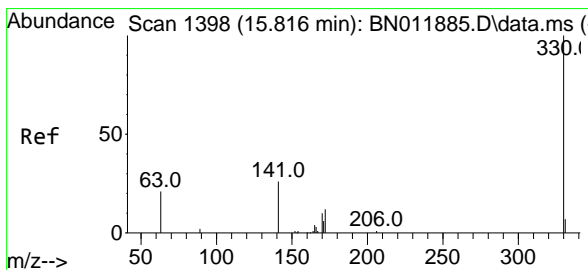
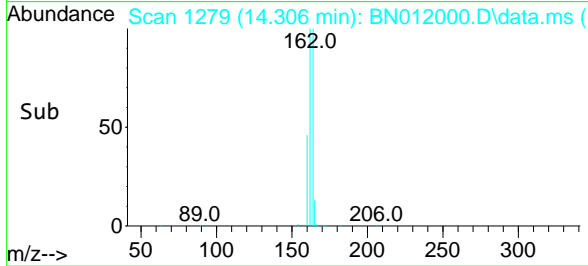
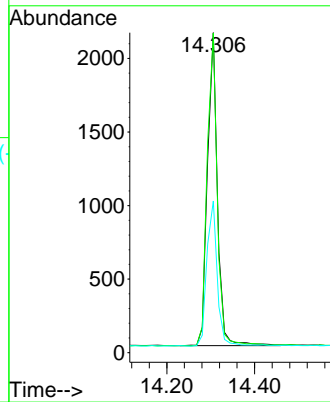
#13
 Acenaphthene-d10
 Concen: 0.40 ng
 RT: 14.306 min Scan# 1279
 Delta R.T. -0.000 min
 Lab File: BN012000.D
 Acq: 29 Sep 2020 02:05

Instrument :
 BNA_N
ClientSampled :
 RE122D2-20200921



Tgt Ion:164 Resp: 3350

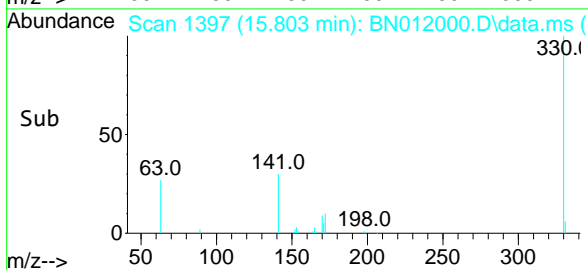
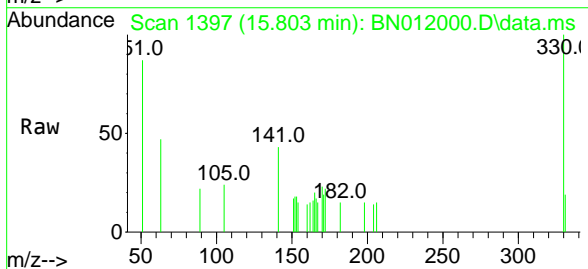
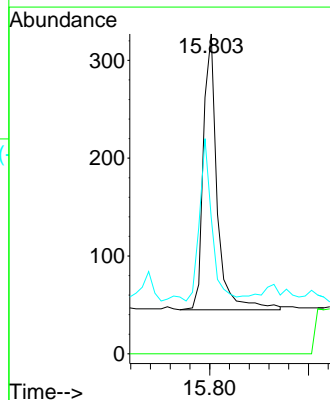
Ion	Ratio	Lower	Upper
164	100		
162	99.9	83.6	125.4
160	47.4	41.2	61.8

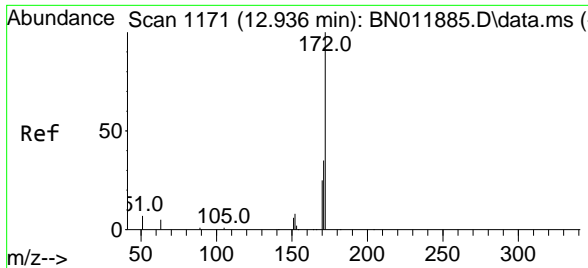


#14
 2,4,6-Tribromophenol
 Concen: 0.34 ng
 RT: 15.803 min Scan# 1397
 Delta R.T. -0.000 min
 Lab File: BN012000.D
 Acq: 29 Sep 2020 02:05

Tgt Ion:330 Resp: 550

Ion	Ratio	Lower	Upper
330	100		
332	0.0	0.0	0.0
141	52.5	33.7	50.5#



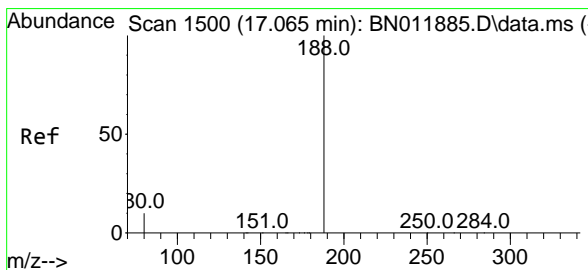
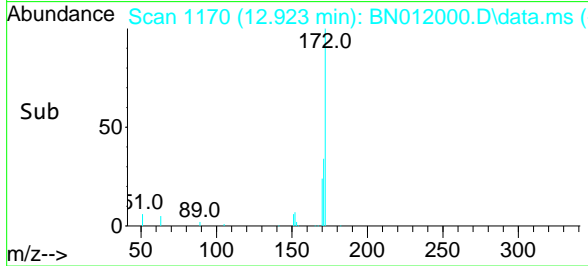
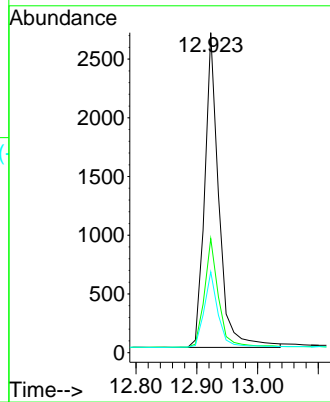
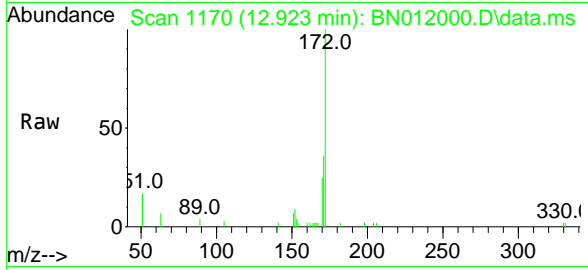


#15
 2-Fluorobiphenyl
 Concen: 0.34 ng
 RT: 12.923 min Scan# 1170
 Delta R.T. -0.013 min
 Lab File: BN012000.D
 Acq: 29 Sep 2020 02:05

Instrument :
 BNA_N
 ClientSampleId :
 RE122D2-20200921

Tgt Ion:172 Resp: 4369

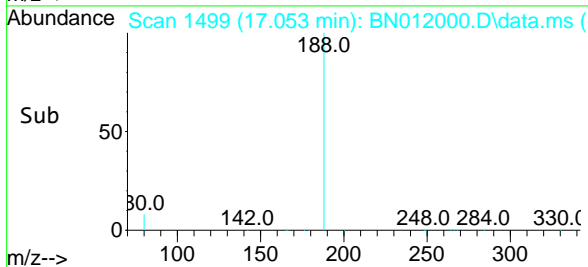
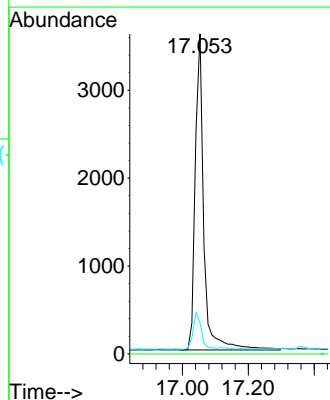
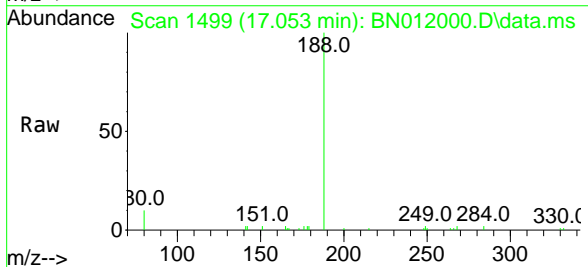
Ion	Ratio	Lower	Upper
172	100		
171	35.6	27.4	41.2
170	25.2	17.8	26.6

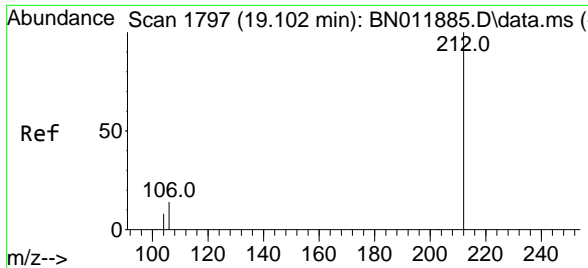


#19
 Phenanthrene-d10
 Concen: 0.40 ng
 RT: 17.053 min Scan# 1499
 Delta R.T. -0.000 min
 Lab File: BN012000.D
 Acq: 29 Sep 2020 02:05

Tgt Ion:188 Resp: 6462

Ion	Ratio	Lower	Upper
188	100		
94	0.0	0.0	0.0
80	9.8	7.7	11.5

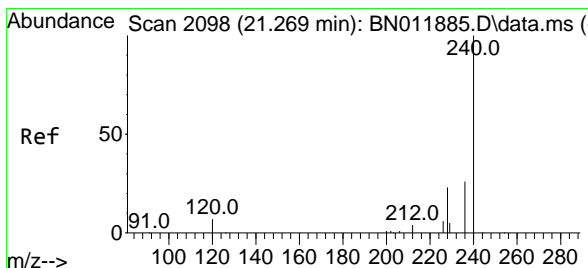
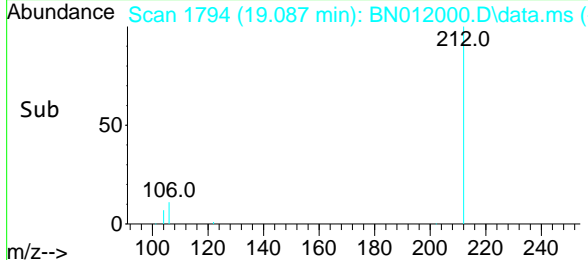
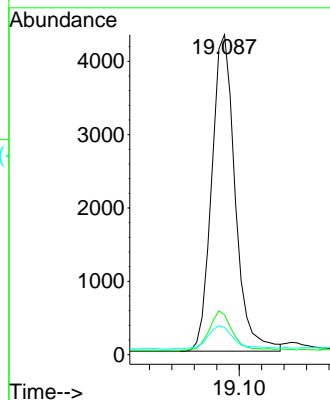
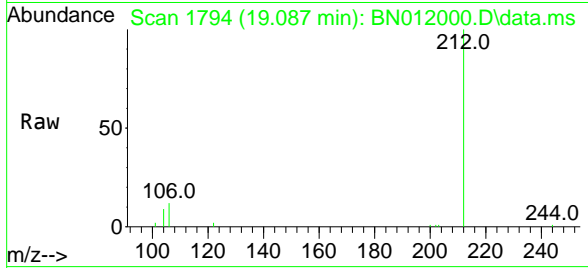




#27
 Fluoranthene-d10
 Concen: 0.33 ng
 RT: 19.087 min Scan# 1794
 Delta R.T. -0.005 min
 Lab File: BN012000.D
 Acq: 29 Sep 2020 02:05

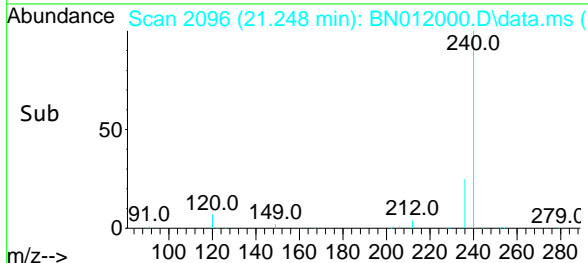
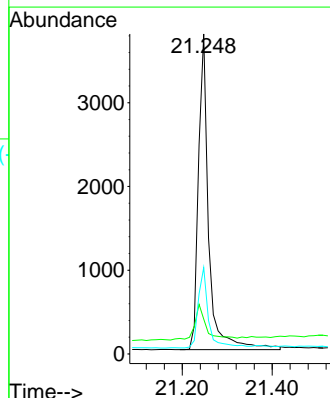
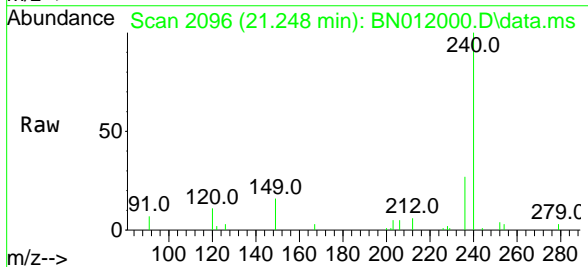
Instrument :
 BNA_N
 ClientSampleId :
 RE122D2-20200921

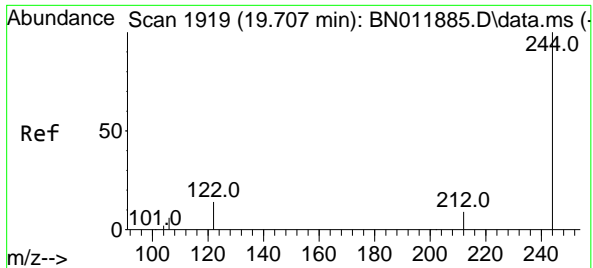
Tgt Ion	Resp	Lower	Upper
212	6259		
106	12.2	6.4	9.6#
104	8.5	3.9	5.9#



#29
 Chrysene-d12
 Concen: 0.40 ng
 RT: 21.248 min Scan# 2096
 Delta R.T. -0.011 min
 Lab File: BN012000.D
 Acq: 29 Sep 2020 02:05

Tgt Ion	Resp	Lower	Upper
240	6002		
120	10.9	3.5	5.3#
236	27.0	20.5	30.7



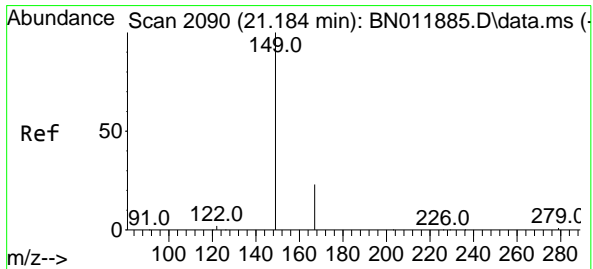
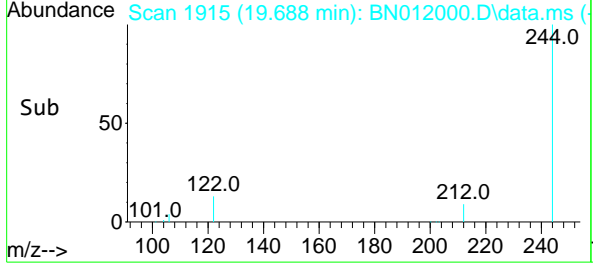
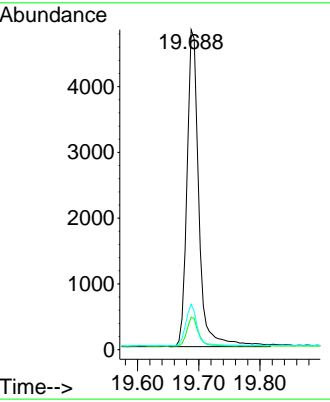
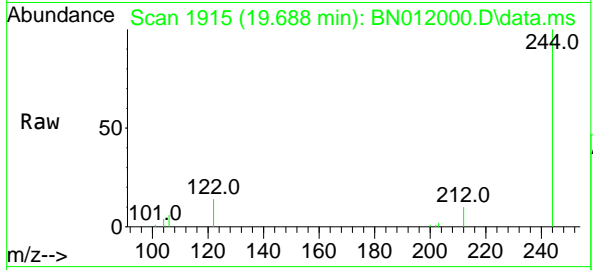


#31
 Terphenyl-d14
 Concen: 0.47 ng
 RT: 19.688 min Scan# 1915
 Delta R.T. -0.010 min
 Lab File: BN012000.D
 Acq: 29 Sep 2020 02:05

Instrument :
 BNA_N
 ClientSampleId :
 RE122D2-20200921

Tgt Ion:244 Resp: 6512

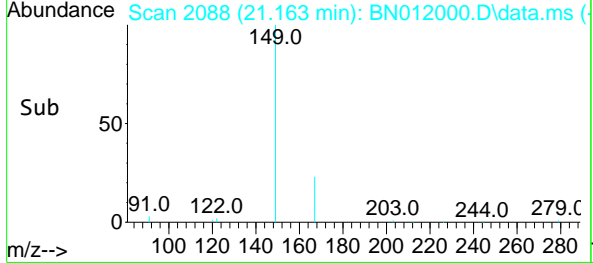
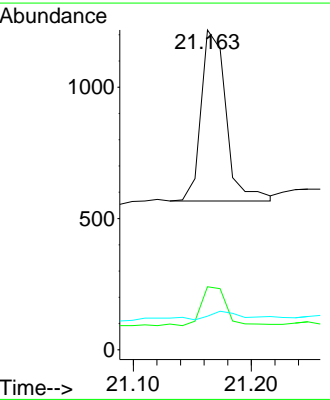
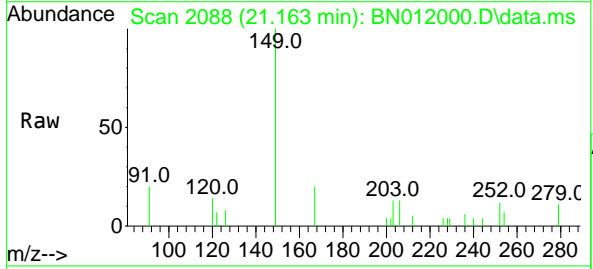
Ion	Ratio	Lower	Upper
244	100		
212	10.2	7.3	10.9
122	14.2	7.8	11.6#

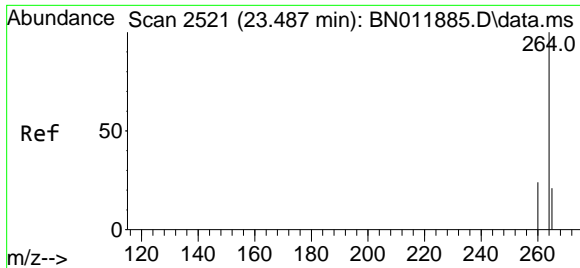


#34
 Bis(2-ethylhexyl)phthalate
 Concen: 0.07 ng
 RT: 21.163 min Scan# 2088
 Delta R.T. -0.011 min
 Lab File: BN012000.D
 Acq: 29 Sep 2020 02:05

Tgt Ion:149 Resp: 956

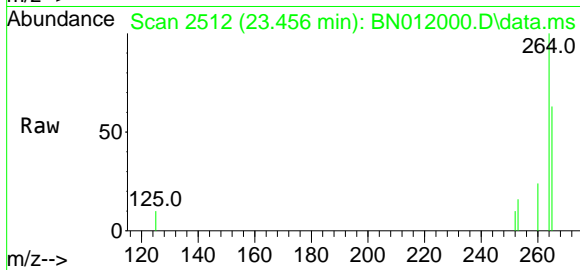
Ion	Ratio	Lower	Upper
149	100		
167	22.8	23.6	35.4#
279	6.2	4.0	6.0#





#36
 Perylene-d12
 Concen: 0.40 ng
 RT: 23.456 min Scan# 2512
 Delta R.T. -0.014 min
 Lab File: BN012000.D
 Acq: 29 Sep 2020 02:05

Instrument :
 BNA_N
ClientSampleId :
 RE122D2-20200921



Tgt Ion:264 Resp: 6286

Ion	Ratio	Lower	Upper
264	100		
260	23.9	19.6	29.4
265	63.1	38.6	58.0#

