

Data Path : Z:\svoasrv\HPCHEM1\BNA_N\Data\BN100124\
 Data File : BN034302.D
 Acq On : 01 Oct 2024 14:34
 Operator : RC/JU
 Sample : P4019-22
 Misc :
 ALS Vial : 9 Sample Multiplier: 1

Instrument :
 BNA_N
 ClientSampleId :
 DDCJ8

Quant Time: Oct 01 23:33:30 2024
 Quant Method : Z:\svoasrv\HPCHEM1\BNA_N\Methods\SFAM-EPA-BN091124.MA.M
 Quant Title : SVOA CALIBRATION
 QLast Update : Mon Sep 30 14:14:38 2024
 Response via : Initial Calibration

Compound	R.T.	QIon	Response	Conc	Units	Dev(Min)
Internal Standards						
1) 1,4-Dichlorobenzene-d4	7.393	152	233621	20.000	ng/ul	0.00
20) Naphthalene-d8	10.152	136	889804	20.000	ng/ul	# 0.01
38) Acenaphthene-d10	14.045	164	612033	20.000	ng/ul	0.00
64) Phenanthrene-d10	16.822	188	1210443	20.000	ng/ul	0.02
79) Chrysene-d12	21.033	240	1155816	20.000	ng/ul	0.00
88) Perylene-d12	23.745	264	1418176	20.000	ng/ul	0.00
System Monitoring Compounds						
3) 1,4-Dioxane-d8	3.005	96	18245	3.187	ng/uL	0.00
4) Pyridine-d5	3.399	84	138630	8.147	ng/ul	0.01
7) Phenol-d5	6.605	99	362880	17.502	ng/ul	0.02
9) Bis-(2-Chloroethyl)eth...	6.746	67	247014	19.202	ng/ul	0.00
11) 2-Chlorophenol-d4	6.940	132	296516	18.168	ng/ul	0.01
15) 4-Methylphenol-d8	8.116	113	207231	12.147	ng/ul	0.01
21) Nitrobenzene-d5	8.540	128	146537	20.662	ng/ul	0.01
24) 2-Nitrophenol-d4	9.252	143	147688	20.251	ng/ul	0.01
28) 2,4-Dichlorophenol-d3	9.793	165	268882	19.577	ng/ul	0.02
31) 4-Chloroaniline-d4	10.269	131	292480	14.066	ng/ul	-0.02
46) Dimethylphthalate-d6	13.469	166	774232	16.927	ng/ul	0.00
49) Acenaphthylene-d8	13.734	160	906764	17.622	ng/ul	0.00
54) 4-Nitrophenol-d4	14.287	143	134912	14.372	ng/ul	0.01
60) Fluorene-d10	15.051	176	687053	17.724	ng/ul	0.00
65) 4,6-Dinitro-2-methylph...	15.187	200	95956	13.296	ng/ul	0.01
73) Anthracene-d10	16.916	188	983329	17.279	ng/ul	0.02
81) Pyrene-d10	19.210	212	1144028	17.765	ng/ul	0.00
92) Benzo(a)pyrene-d12	23.557	264	1269781	17.430	ng/ul	0.00
Target Compounds						
6) Benzaldehyde	6.564	77	179238	16.377	ng/ul#	1
16) Acetophenone	8.346	105	383300	14.183	ng/ul	90
17) N-Nitroso-di-n-propyla...	8.216	70	46482	3.473	ng/ul#	71
19) Hexachloroethane	8.493	117	380695	53.965	ng/ul#	11
22) Nitrobenzene	8.575	77	52579	2.962	ng/ul#	47
23) Isophorone	9.099	82	321347	9.817	ng/ul#	46
25) 2-Nitrophenol	9.305	139	14777	1.810	ng/ul#	1
26) 2,4-Dimethylphenol	9.369	107	83780	4.989	ng/ul#	62
29) 2,4-Dichlorophenol	9.822	162	33803	2.431	ng/ul#	77
30) Naphthalene	10.199	128	1289753	26.499	ng/ul#	95
34) Caprolactam	11.093	113	36166	6.532	ng/ul#	1
36) 2-Methylnaphthalene	11.828	142	2182933	65.112	ng/ul	98
37) 1-Methylnaphthalene	12.051	142	1323442	38.998	ng/ul	97
41) 2,4,6-Trichlorophenol	12.463	196	26223	2.239	ng/ul	96
42) 2,4,5-Trichlorophenol	12.534	196	13705	1.065	ng/ul	92
43) 1,1'-Biphenyl	12.869	154	218277	4.731	ng/ul#	85
45) 2-Nitroaniline	13.104	65	24350	2.096	ng/ul#	1
48) 2,6-Dinitrotoluene	13.610	165	39868	4.343	ng/ul#	72
50) Acenaphthylene	13.769	152	56324	1.000	ng/ul#	1
51) 3-Nitroaniline	13.922	138	19419	1.914	ng/ul#	15
52) Acenaphthene	14.110	153	83292	2.072	ng/ul	94
55) 4-Nitrophenol	14.281	109	25801	3.237	ng/ul#	45
56) Dibenzofuran	14.451	168	90308	1.643	ng/ul#	25
57) 2,4-Dinitrotoluene	14.463	165	56778	4.103	ng/ul#	75

Data Path : Z:\svoasrv\HPCHEM1\BNA_N\Data\BN100124\
 Data File : BN034302.D
 Acq On : 01 Oct 2024 14:34
 Operator : RC/JU
 Sample : P4019-22
 Misc :
 ALS Vial : 9 Sample Multiplier: 1

Instrument :
 BNA_N
 ClientSampleId :
 DDCJ8

Quant Time: Oct 01 23:33:30 2024
 Quant Method : Z:\svoasrv\HPCHEM1\BNA_N\Methods\SFAM-EPA-BN091124.MA.M
 Quant Title : SVOA CALIBRATION
 QLast Update : Mon Sep 30 14:14:38 2024
 Response via : Initial Calibration

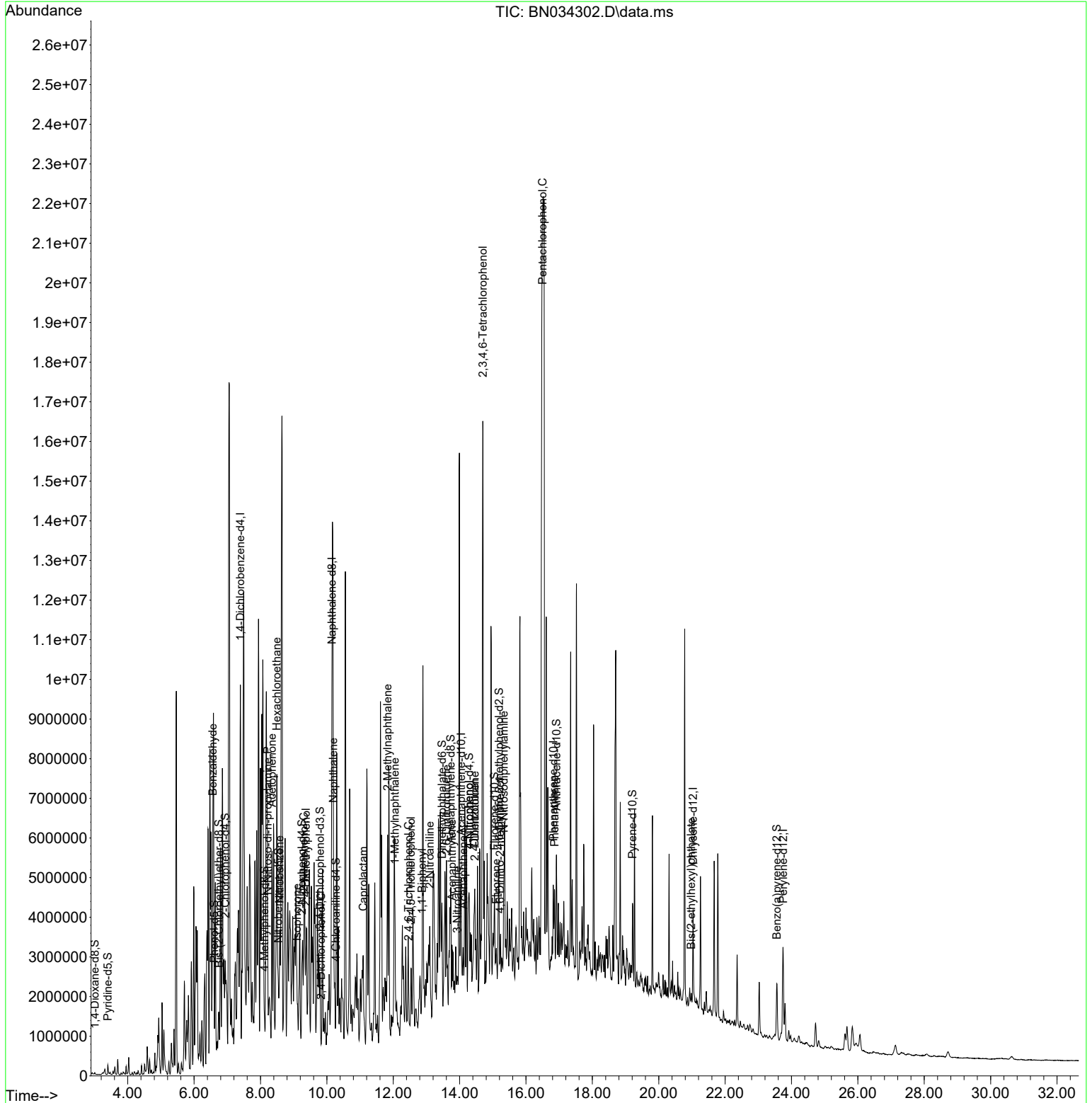
Compound	R.T.	QIon	Response	Conc	Units	Dev(Min)
58) 2,3,4,6-Tetrachlorophenol	14.698	232	3431036	321.360	ng/ul	91
61) Fluorene	15.104	166	188892	4.201	ng/ul#	95
66) 4,6-Dinitro-2-methylph...	15.216	198	40009	4.992	ng/ul#	19
67) N-Nitrosodiphenylamine	15.334	169	291746	8.043	ng/ul#	38
71) Pentachlorophenol	16.498	266	7847172	825.859	ng/ul	96
72) Phenanthrene	16.863	178	920009	13.784	ng/ul#	95
86) Bis(2-ethylhexyl)phtha...	20.980	149	61746	1.162	ng/ul#	85

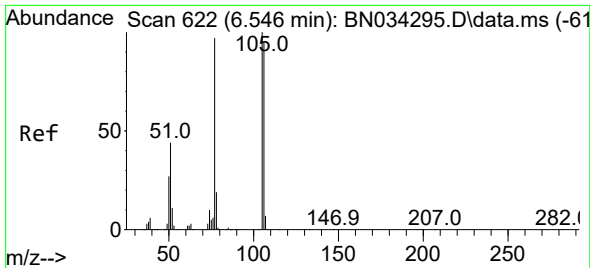
(#) = qualifier out of range (m) = manual integration (+) = signals summed

Data Path : Z:\svoasrv\HPCHEM1\BNA_N\Data\BN100124\
 Data File : BN034302.D
 Acq On : 01 Oct 2024 14:34
 Operator : RC/JU
 Sample : P4019-22
 Misc :
 ALS Vial : 9 Sample Multiplier: 1

Instrument :
 BNA_N
 ClientSampleId :
 DDCJ8

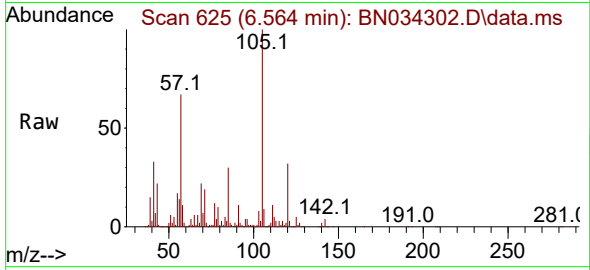
Quant Time: Oct 01 23:33:30 2024
 Quant Method : Z:\svoasrv\HPCHEM1\BNA_N\Methods\SFAM-EPA-BN091124.MA.M
 Quant Title : SVOA CALIBRATION
 QLast Update : Mon Sep 30 14:14:38 2024
 Response via : Initial Calibration



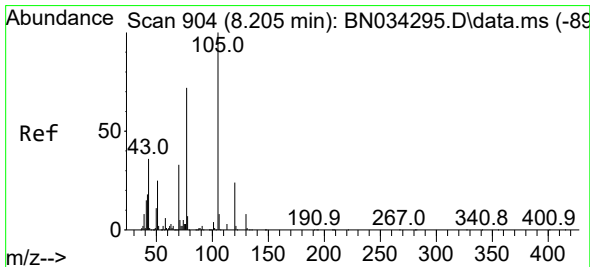
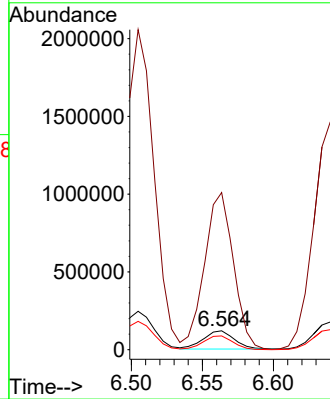
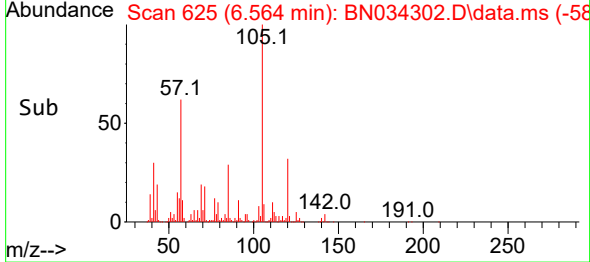


#6
 Benzaldehyde
 Concen: 16.377 ng/ul
 RT: 6.564 min Scan# 61
 Delta R.T. 0.018 min
 Lab File: BN034302.D
 Acq: 01 Oct 2024 14:34

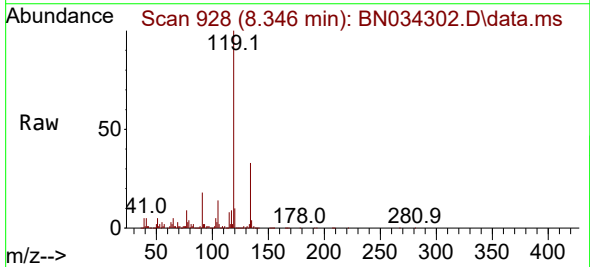
Instrument :
 BNA_N
 ClientSampleId :
 DDCJ8



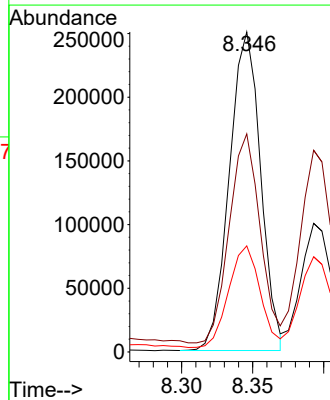
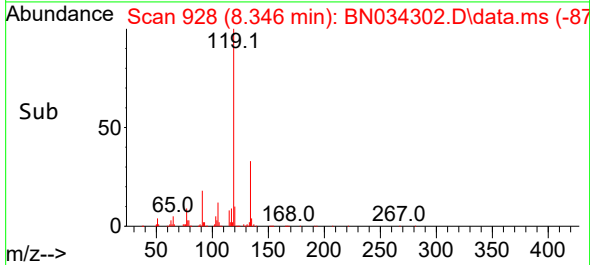
Tgt Ion: 77 Resp: 179238
 Ion Ratio Lower Upper
 77 100
 105 830.6 76.4 114.6#
 106 72.6 69.8 104.6

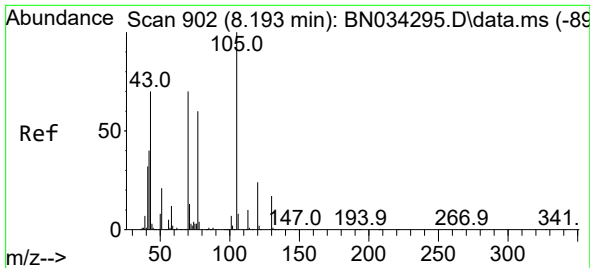


#16
 Acetophenone
 Concen: 14.183 ng/ul
 RT: 8.346 min Scan# 928
 Delta R.T. 0.141 min
 Lab File: BN034302.D
 Acq: 01 Oct 2024 14:34



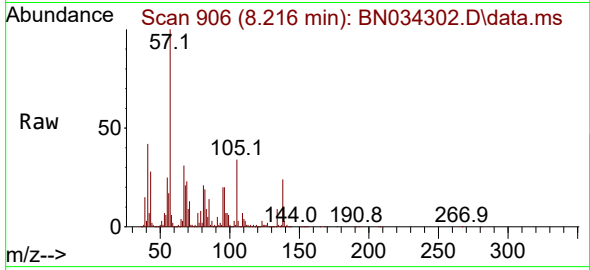
Tgt Ion: 105 Resp: 383300
 Ion Ratio Lower Upper
 105 100
 77 68.1 61.1 91.7
 51 33.2 22.6 33.8





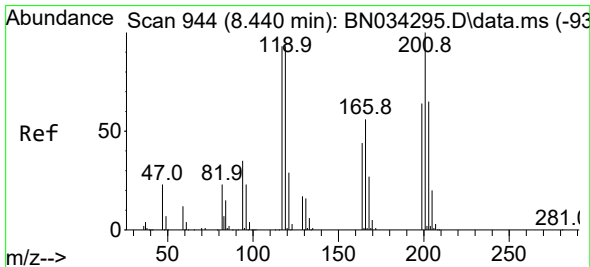
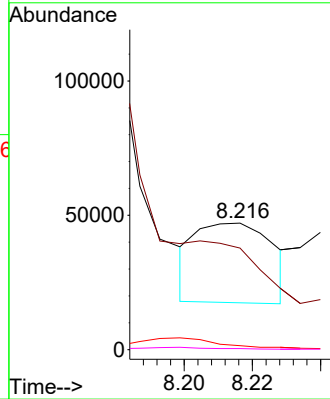
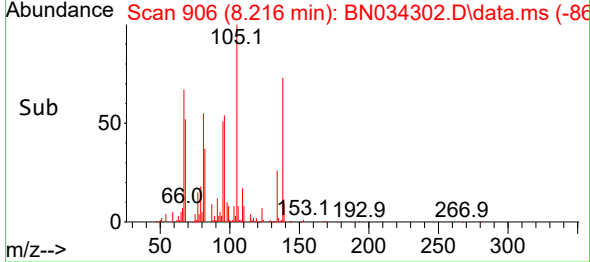
#17
 N-Nitroso-di-n-propylamine
 Concen: 3.473 ng/ul
 RT: 8.216 min Scan# 902
 Delta R.T. 0.018 min
 Lab File: BN034302.D
 Acq: 01 Oct 2024 14:34

Instrument :
 BNA_N
 ClientSampleId :
 DDCJ8

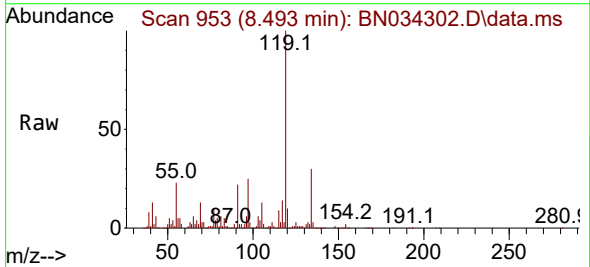


Tgt Ion: 70 Resp: 46482

Ion	Ratio	Lower	Upper
70	100		
42	80.3	47.9	71.9#
101	3.2	7.5	11.3#
130	0.9	16.2	24.2#

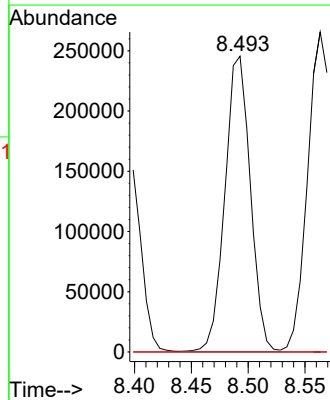
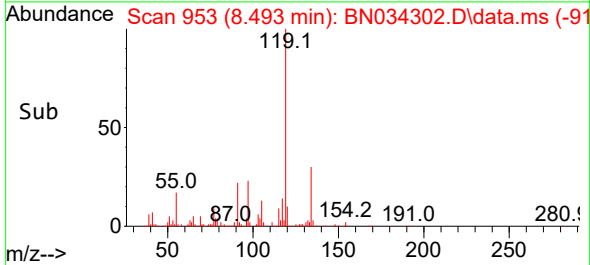


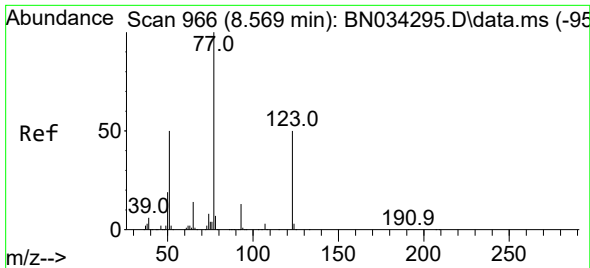
#19
 Hexachloroethane
 Concen: 53.965 ng/ul
 RT: 8.493 min Scan# 953
 Delta R.T. 0.053 min
 Lab File: BN034302.D
 Acq: 01 Oct 2024 14:34



Tgt Ion: 117 Resp: 380695

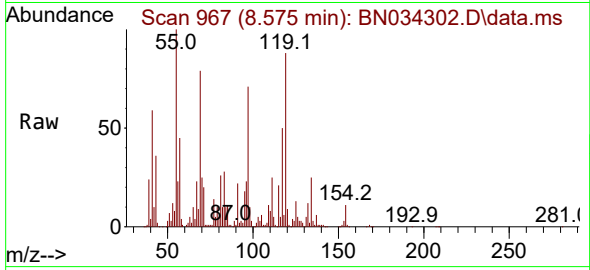
Ion	Ratio	Lower	Upper
117	100		
201	0.0	73.9	110.9#
199	0.0	44.0	66.0#



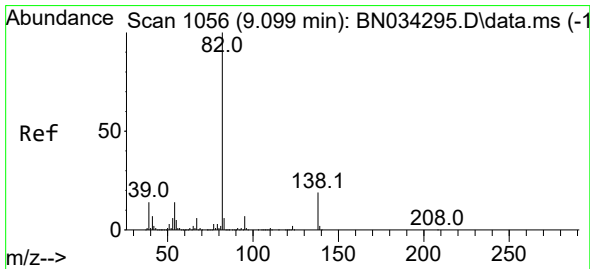
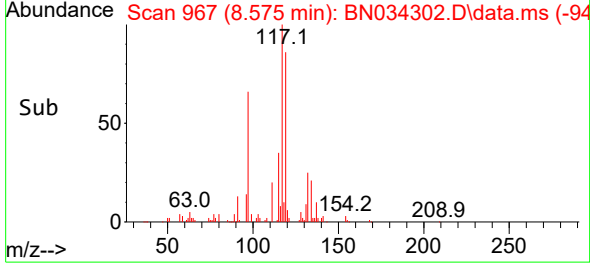
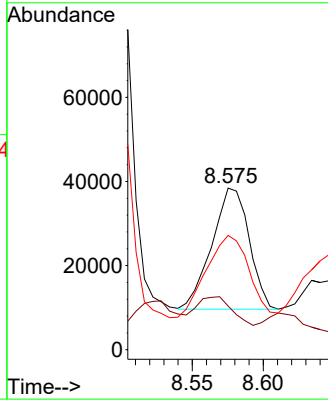


#22
 Nitrobenzene
 Concen: 2.962 ng/ul
 RT: 8.575 min Scan# 967
 Delta R.T. 0.006 min
 Lab File: BN034302.D
 Acq: 01 Oct 2024 14:34

Instrument :
 BNA_N
 ClientSampleId :
 DDCJ8

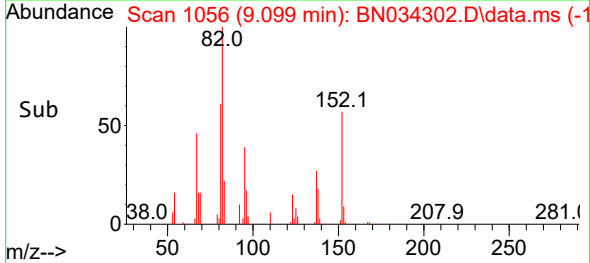
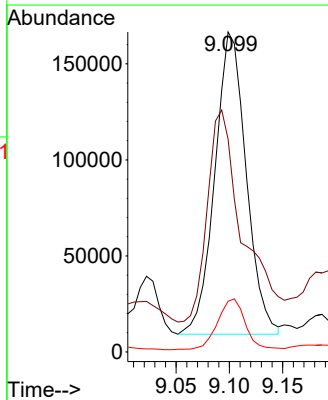
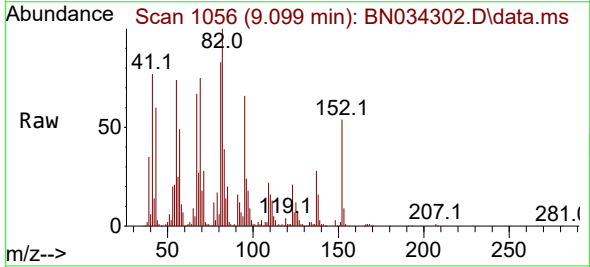


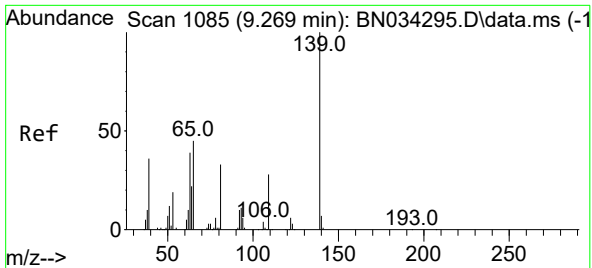
Tgt Ion: 77 Resp: 52579
 Ion Ratio Lower Upper
 77 100
 123 27.1 34.5 51.7#
 65 70.7 11.0 16.6#



#23
 Isophorone
 Concen: 9.817 ng/ul
 RT: 9.099 min Scan# 1056
 Delta R.T. 0.000 min
 Lab File: BN034302.D
 Acq: 01 Oct 2024 14:34

Tgt Ion: 82 Resp: 321347
 Ion Ratio Lower Upper
 82 100
 95 66.5 6.1 9.1#
 138 15.9 13.4 20.0



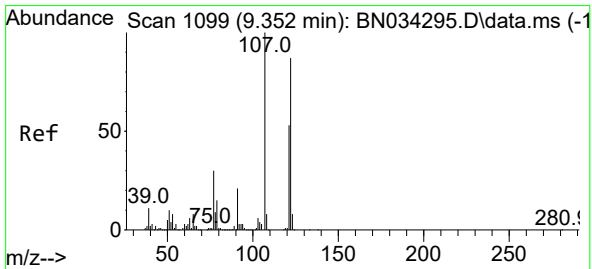
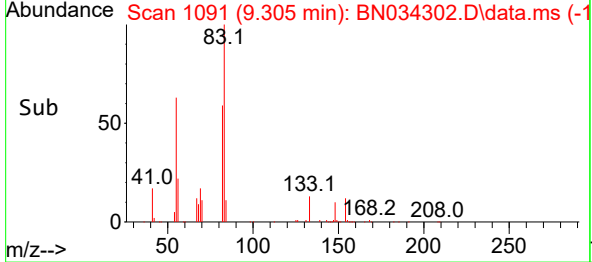
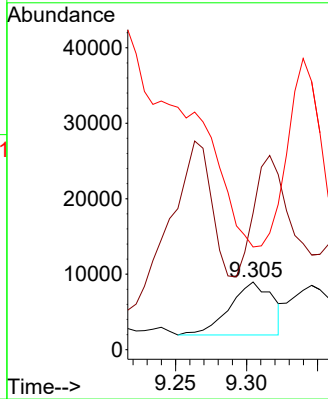
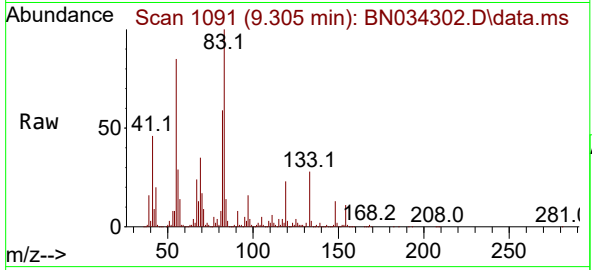


#25
 2-Nitrophenol
 Concen: 1.810 ng/ul
 RT: 9.305 min Scan# 1102
 Delta R.T. 0.029 min
 Lab File: BN034302.D
 Acq: 01 Oct 2024 14:34

Instrument :
 BNA_N
 ClientSampleId :
 DDCJ8

Tgt Ion:139 Resp: 14777

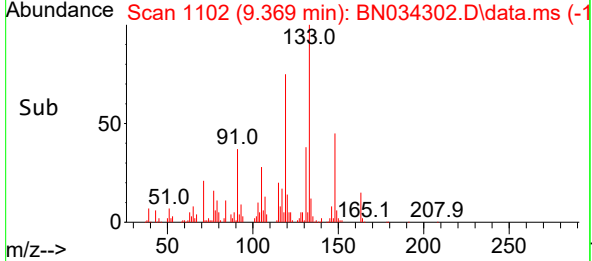
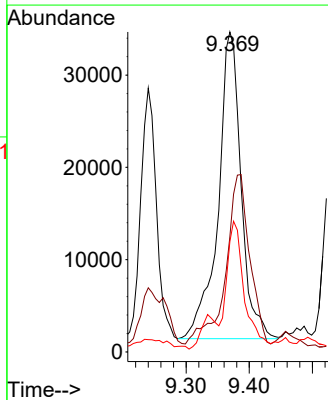
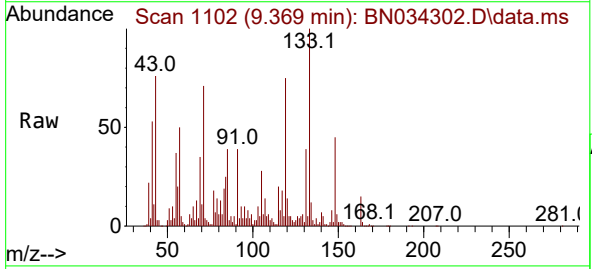
Ion	Ratio	Lower	Upper
139	100		
65	202.0	42.0	63.0#
109	151.9	26.5	39.7#

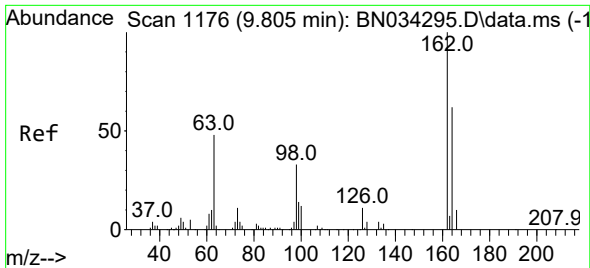


#26
 2,4-Dimethylphenol
 Concen: 4.989 ng/ul
 RT: 9.369 min Scan# 1102
 Delta R.T. 0.018 min
 Lab File: BN034302.D
 Acq: 01 Oct 2024 14:34

Tgt Ion:107 Resp: 83780

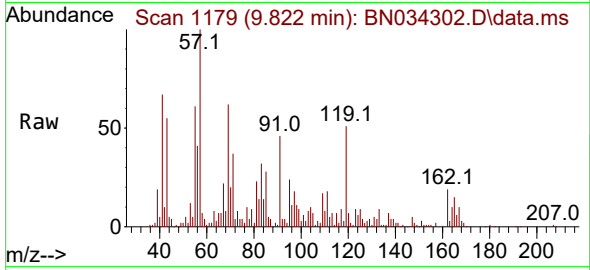
Ion	Ratio	Lower	Upper
107	100		
121	36.1	38.4	57.6#
122	34.5	62.9	94.3#



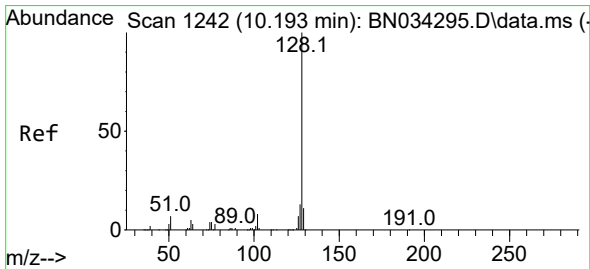
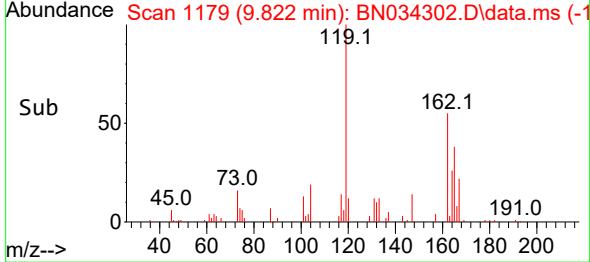
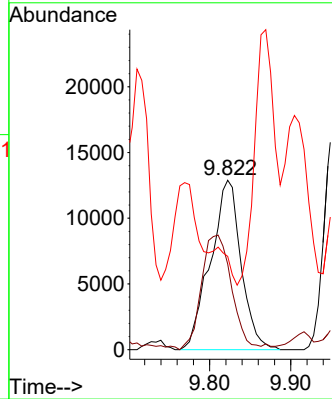


#29
 2,4-Dichlorophenol
 Concen: 2.431 ng/ul
 RT: 9.822 min Scan# 1176
 Delta R.T. 0.018 min
 Lab File: BN034302.D
 Acq: 01 Oct 2024 14:34

Instrument :
 BNA_N
 ClientSampleId :
 DDCJ8

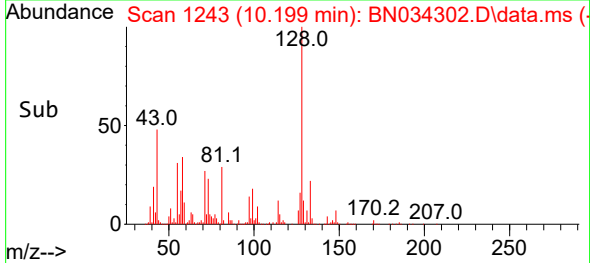
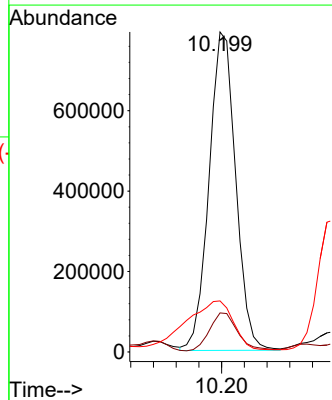
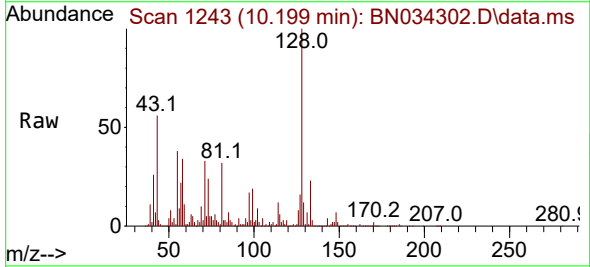


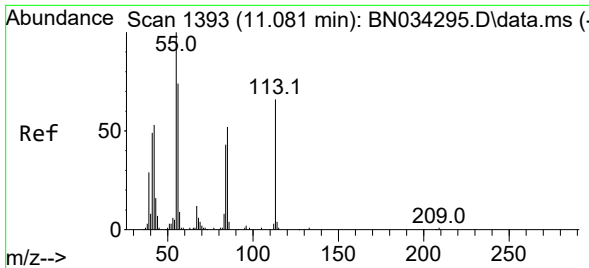
Tgt Ion:162 Resp: 33803
 Ion Ratio Lower Upper
 162 100
 164 50.5 53.0 79.6#
 98 55.1 30.6 46.0#



#30
 Naphthalene
 Concen: 26.499 ng/ul
 RT: 10.199 min Scan# 1243
 Delta R.T. 0.006 min
 Lab File: BN034302.D
 Acq: 01 Oct 2024 14:34

Tgt Ion:128 Resp: 1289753
 Ion Ratio Lower Upper
 128 100
 129 12.2 8.7 13.1
 127 16.0 10.6 16.0#

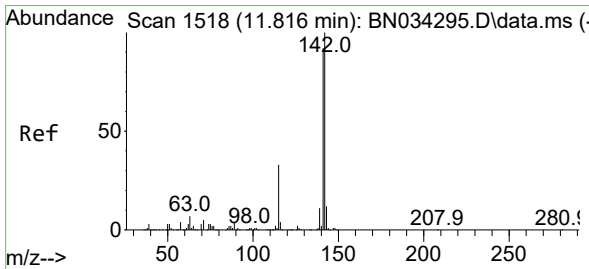
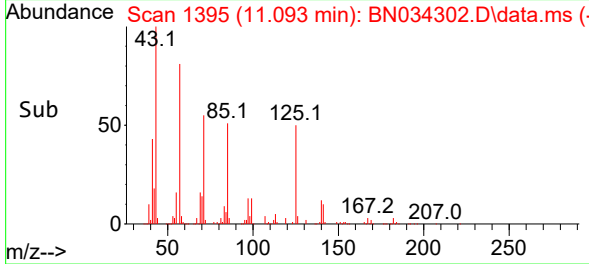
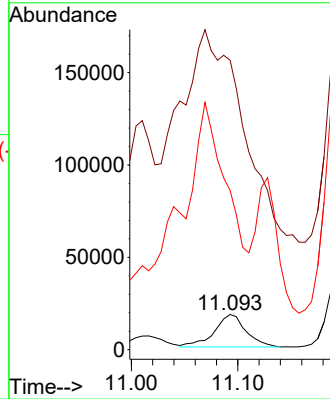
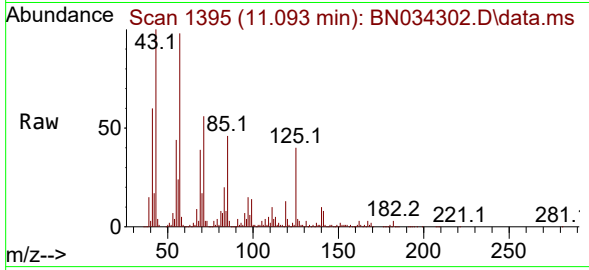




#34
 Caprolactam
 Concen: 6.532 ng/u1
 RT: 11.093 min Scan# 1111
 Delta R.T. 0.006 min
 Lab File: BN034302.D
 Acq: 01 Oct 2024 14:34

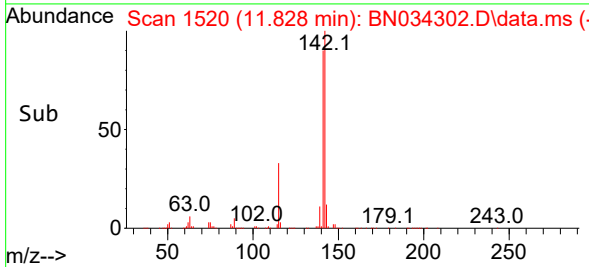
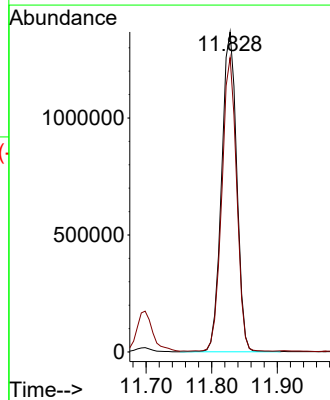
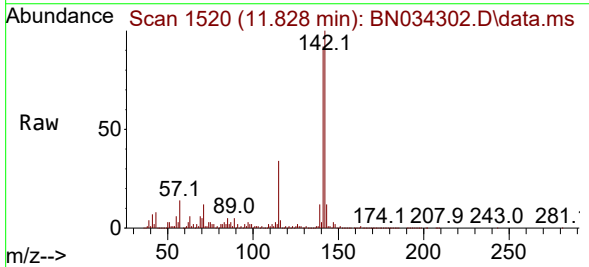
Instrument :
 BNA_N
 ClientSampleId :
 DDCJ8

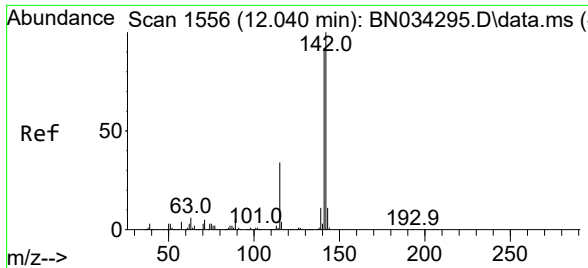
Tgt Ion:113 Resp: 36166
 Ion Ratio Lower Upper
 113 100
 55 821.8 137.0 205.6#
 56 452.1 99.7 149.5#



#36
 2-Methylnaphthalene
 Concen: 65.112 ng/u1
 RT: 11.828 min Scan# 1520
 Delta R.T. 0.012 min
 Lab File: BN034302.D
 Acq: 01 Oct 2024 14:34

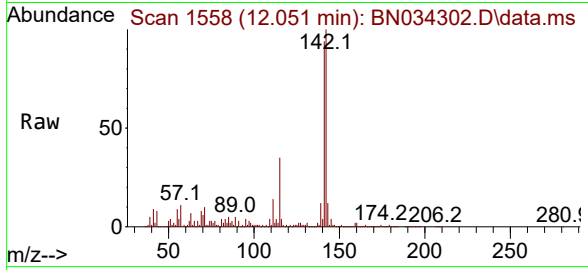
Tgt Ion:142 Resp: 2182933
 Ion Ratio Lower Upper
 142 100
 141 92.0 72.2 108.2



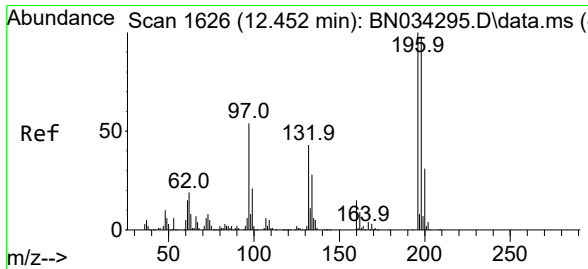
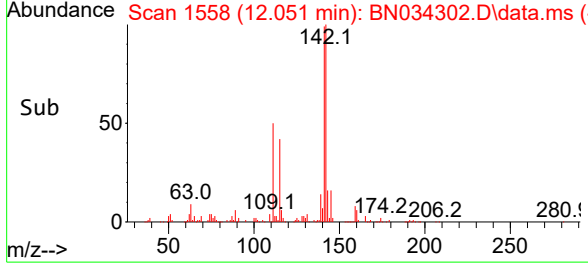
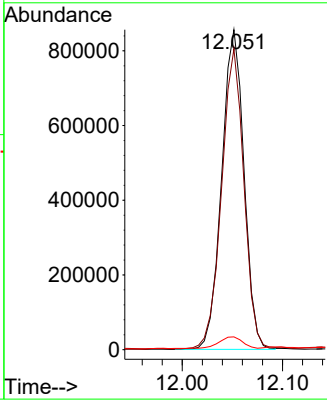


#37
 1-Methylnaphthalene
 Concen: 38.998 ng/uI
 RT: 12.051 min Scan# 1558
 Delta R.T. 0.012 min
 Lab File: BN034302.D
 Acq: 01 Oct 2024 14:34

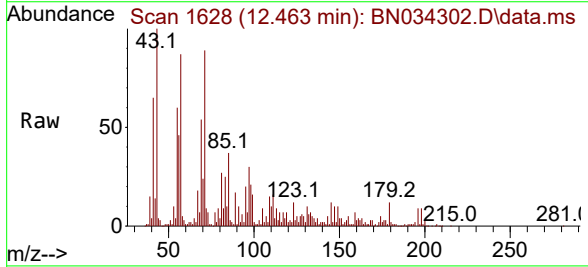
Instrument : BNA_N
 ClientSampleId : DDCJ8



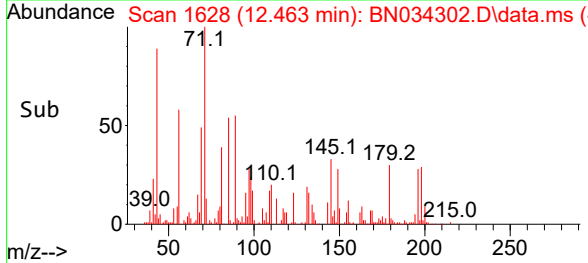
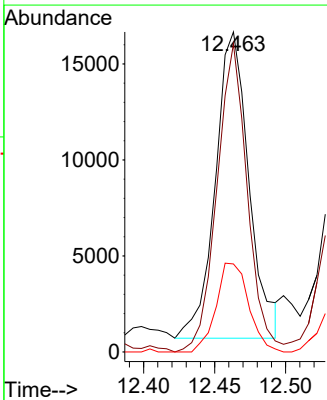
Tgt Ion:142 Resp: 1323442
 Ion Ratio Lower Upper
 142 100
 141 94.0 72.5 108.7
 116 4.0 3.2 4.8

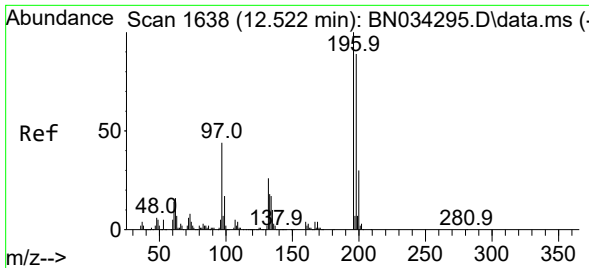


#41
 2,4,6-Trichlorophenol
 Concen: 2.239 ng/uI
 RT: 12.463 min Scan# 1628
 Delta R.T. 0.012 min
 Lab File: BN034302.D
 Acq: 01 Oct 2024 14:34



Tgt Ion:196 Resp: 26223
 Ion Ratio Lower Upper
 196 100
 198 96.3 75.0 112.4
 200 27.5 24.7 37.1



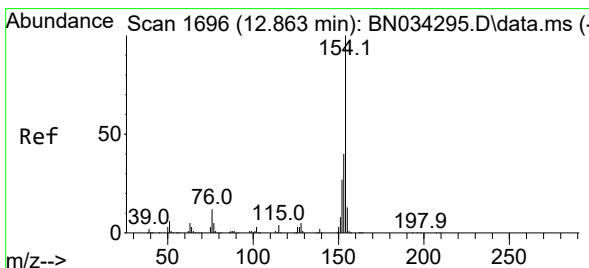
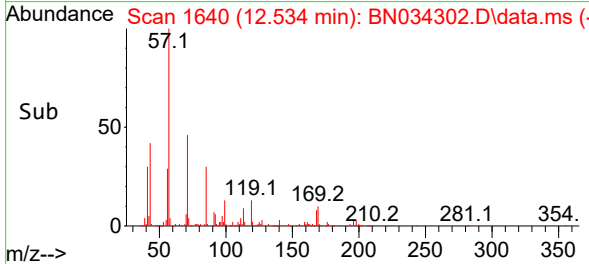
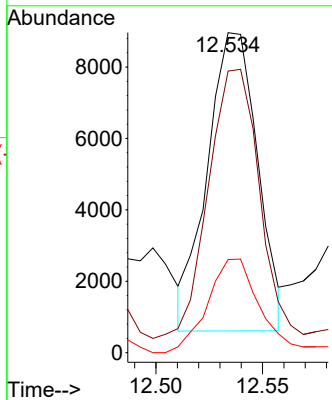
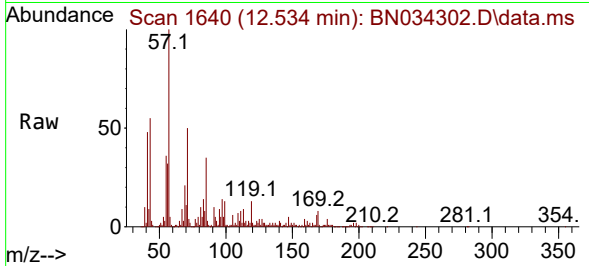


#42
 2,4,5-Trichlorophenol
 Concen: 1.065 ng/ul
 RT: 12.534 min Scan# 1638
 Delta R.T. 0.012 min
 Lab File: BN034302.D
 Acq: 01 Oct 2024 14:34

Instrument :
 BNA_N
 ClientSampleId :
 DDCJ8

Tgt Ion:196 Resp: 13705

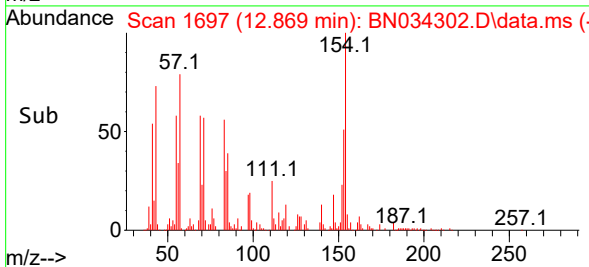
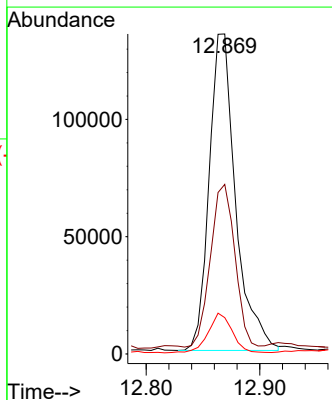
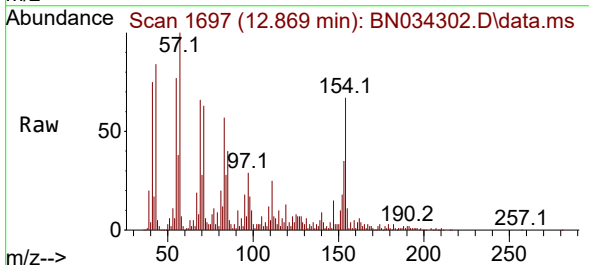
Ion	Ratio	Lower	Upper
196	100		
198	88.0	77.1	115.7
200	29.1	25.2	37.8

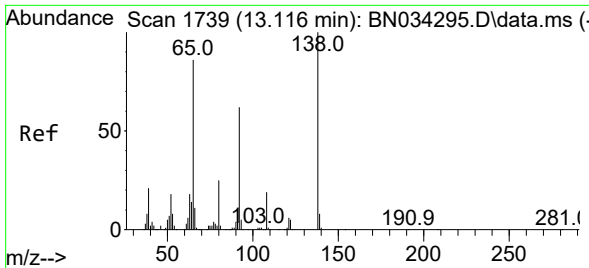


#43
 1,1'-Biphenyl
 Concen: 4.731 ng/ul
 RT: 12.869 min Scan# 1697
 Delta R.T. 0.006 min
 Lab File: BN034302.D
 Acq: 01 Oct 2024 14:34

Tgt Ion:154 Resp: 218277

Ion	Ratio	Lower	Upper
154	100		
153	53.0	33.3	49.9#
76	11.4	10.2	15.4



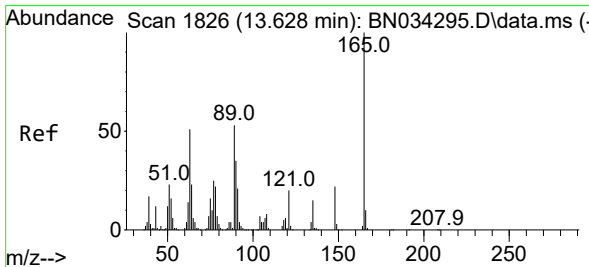
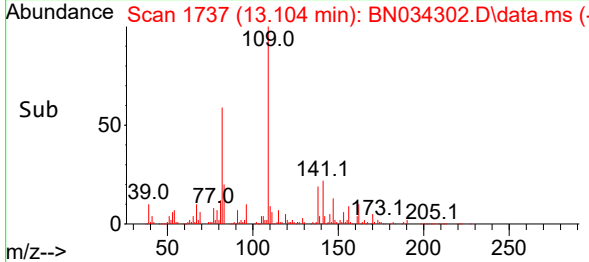
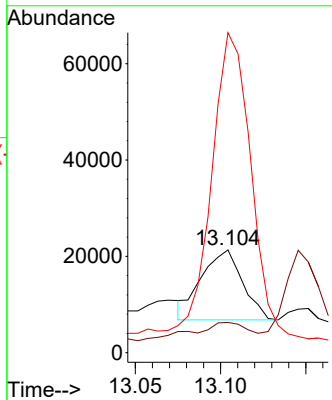
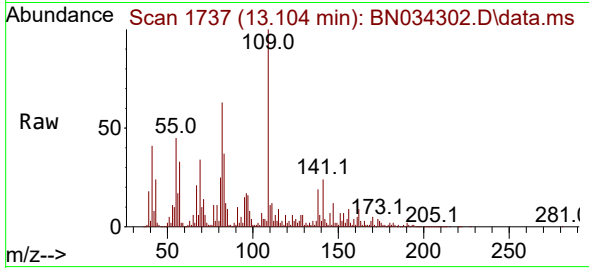


#45
 2-Nitroaniline
 Concen: 2.096 ng/ul
 RT: 13.104 min Scan# 1737
 Delta R.T. -0.012 min
 Lab File: BN034302.D
 Acq: 01 Oct 2024 14:34

Instrument : BNA_N
 ClientSampleId : DDCJ8

Tgt Ion: 65 Resp: 24350

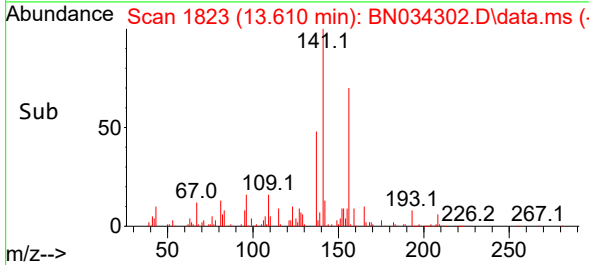
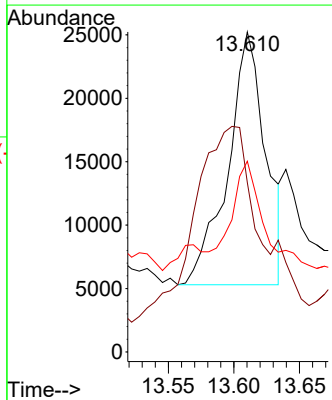
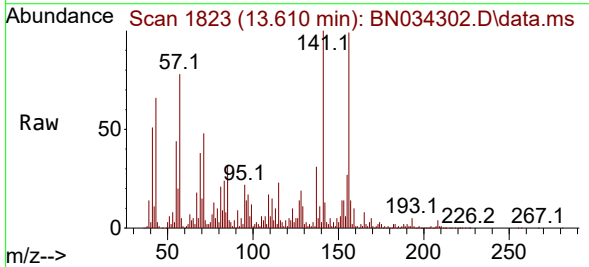
Ion	Ratio	Lower	Upper
65	100		
92	29.5	53.2	79.8#
138	311.4	80.9	121.3#

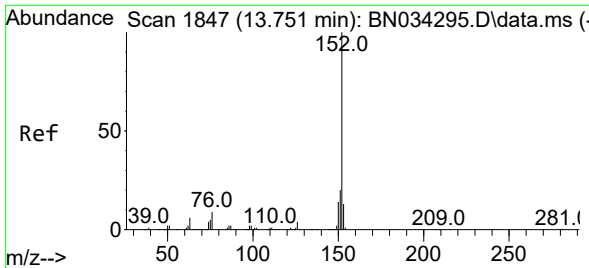


#48
 2,6-Dinitrotoluene
 Concen: 4.343 ng/ul
 RT: 13.610 min Scan# 1823
 Delta R.T. -0.023 min
 Lab File: BN034302.D
 Acq: 01 Oct 2024 14:34

Tgt Ion: 165 Resp: 39868

Ion	Ratio	Lower	Upper
165	100		
89	53.0	48.6	72.8
121	59.6	19.0	28.6#



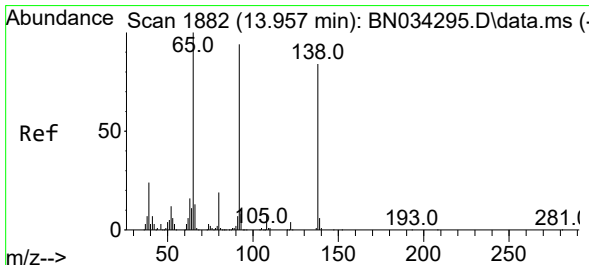
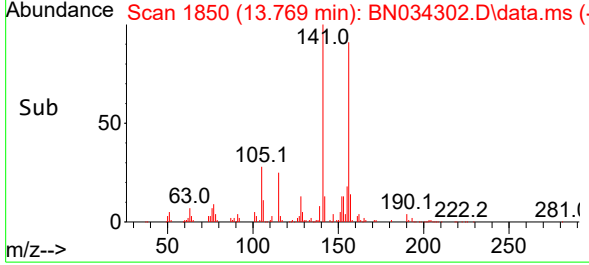
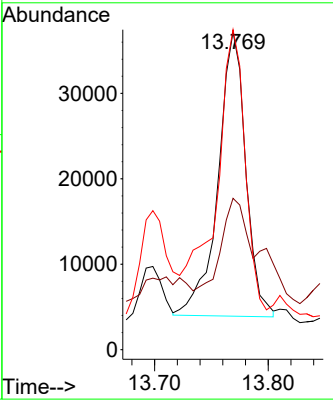
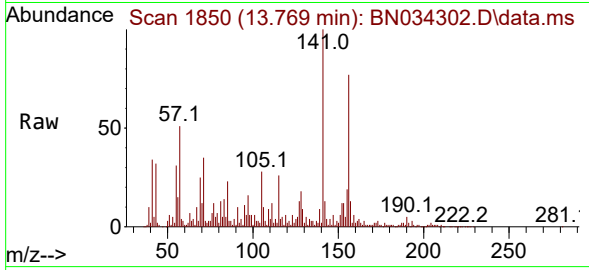


#50
 Acenaphthylene
 Concen: 1.000 ng/ul
 RT: 13.769 min Scan# 1850
 Delta R.T. 0.012 min
 Lab File: BN034302.D
 Acq: 01 Oct 2024 14:34

Instrument : BNA_N
 ClientSampleId : DDCJ8

Tgt Ion:152 Resp: 56324

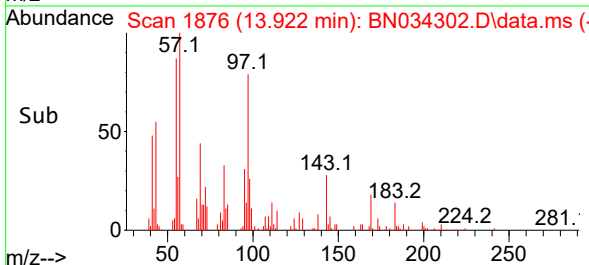
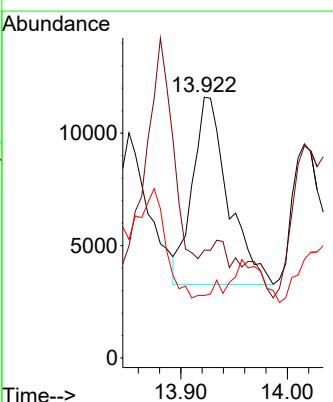
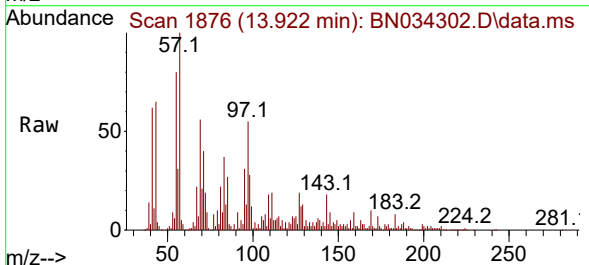
Ion	Ratio	Lower	Upper
152	100		
151	47.6	16.2	24.4#
153	100.7	10.6	16.0#

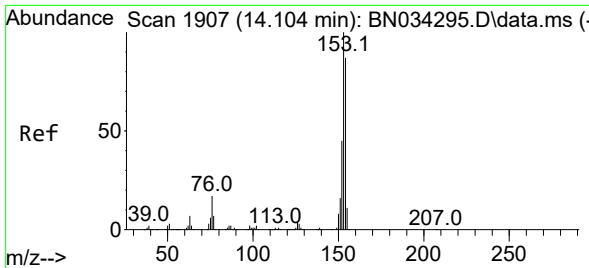


#51
 3-Nitroaniline
 Concen: 1.914 ng/ul
 RT: 13.922 min Scan# 1876
 Delta R.T. -0.035 min
 Lab File: BN034302.D
 Acq: 01 Oct 2024 14:34

Tgt Ion:138 Resp: 19419

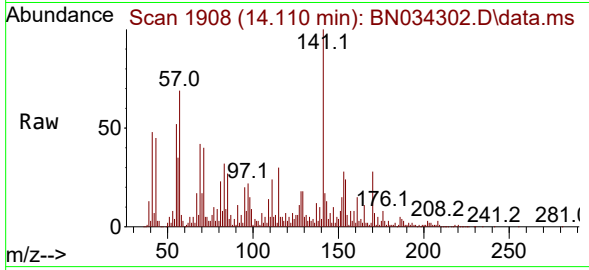
Ion	Ratio	Lower	Upper
138	100		
108	41.3	9.0	13.4#
92	23.9	94.6	141.8#



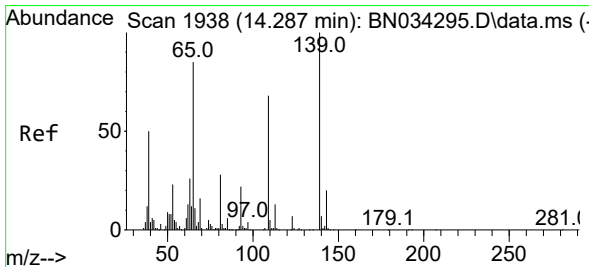
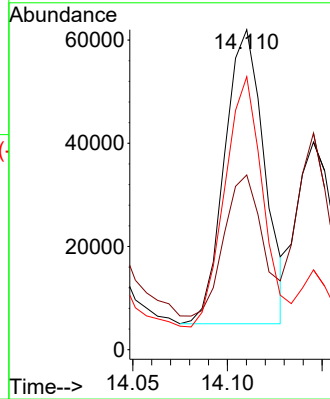
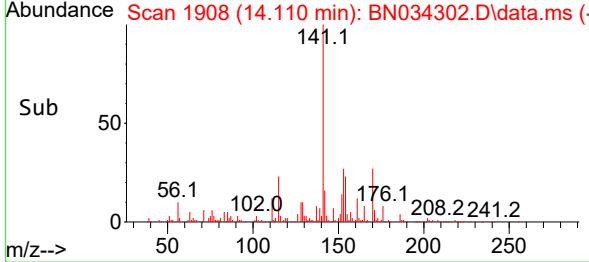


#52
 Acenaphthene
 Concen: 2.072 ng/uI
 RT: 14.110 min Scan# 1908
 Delta R.T. 0.006 min
 Lab File: BN034302.D
 Acq: 01 Oct 2024 14:34

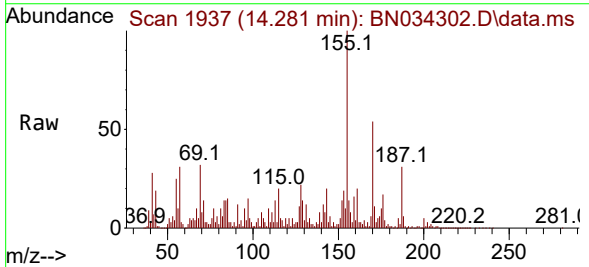
Instrument :
 BNA_N
 ClientSampleId :
 DDCJ8



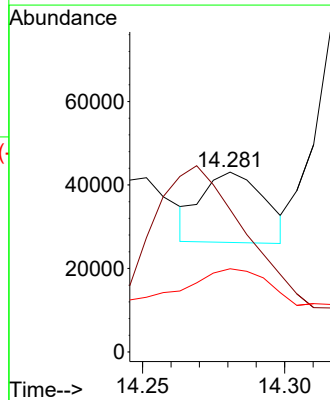
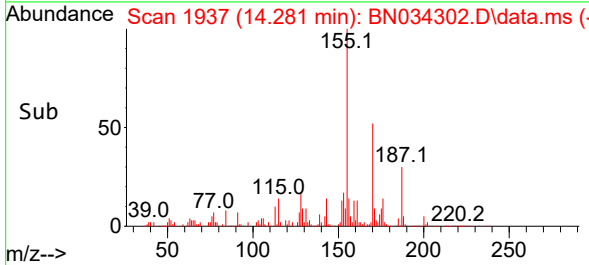
Tgt Ion:153 Resp: 83292
 Ion Ratio Lower Upper
 153 100
 152 54.6 37.8 56.8
 154 85.3 71.2 106.8

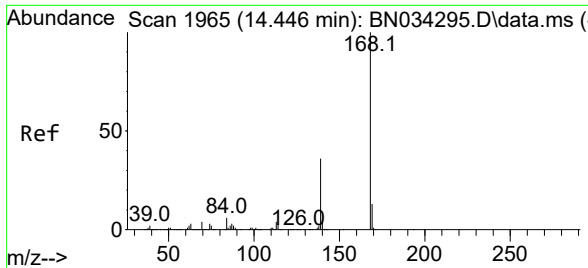


#55
 4-Nitrophenol
 Concen: 3.237 ng/uI
 RT: 14.281 min Scan# 1937
 Delta R.T. -0.006 min
 Lab File: BN034302.D
 Acq: 01 Oct 2024 14:34



Tgt Ion:109 Resp: 25801
 Ion Ratio Lower Upper
 109 100
 139 79.1 102.8 154.2#
 65 46.3 97.7 146.5#

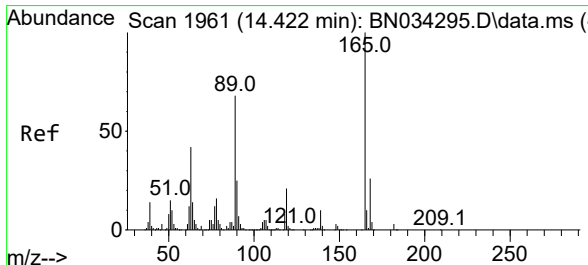
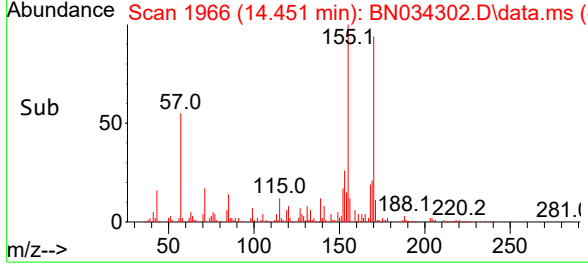
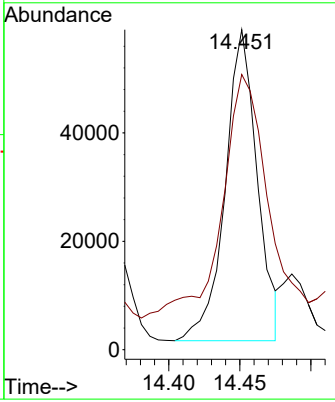
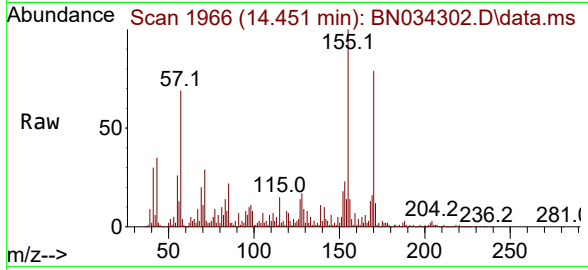




#56
 Dibenzofuran
 Concen: 1.643 ng/ul
 RT: 14.451 min Scan# 1966
 Delta R.T. 0.006 min
 Lab File: BN034302.D
 Acq: 01 Oct 2024 14:34

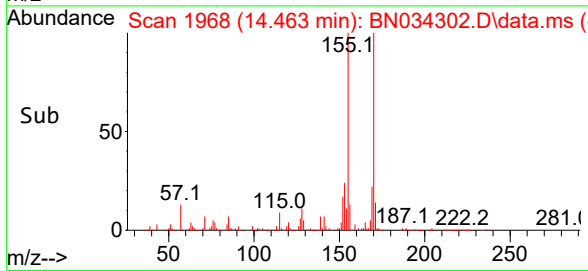
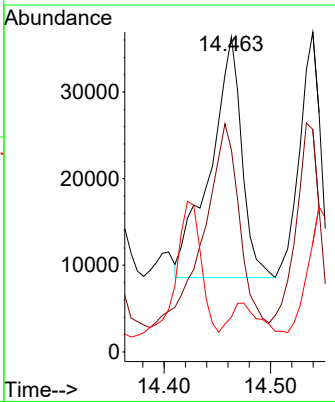
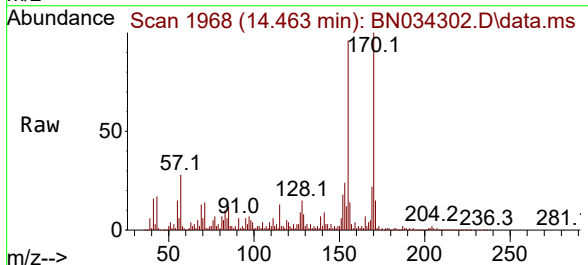
Instrument : BNA_N
 ClientSampleId : DDCJ8

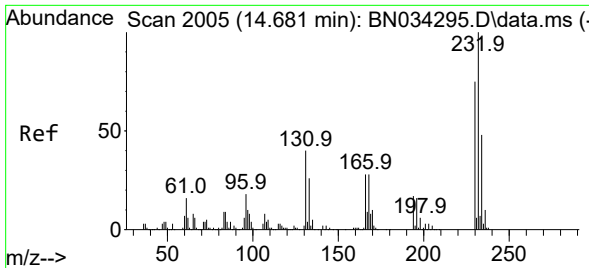
Tgt Ion:168 Resp: 90308
 Ion Ratio Lower Upper
 168 100
 139 86.0 31.7 47.5#



#57
 2,4-Dinitrotoluene
 Concen: 4.103 ng/ul
 RT: 14.463 min Scan# 1968
 Delta R.T. 0.035 min
 Lab File: BN034302.D
 Acq: 01 Oct 2024 14:34

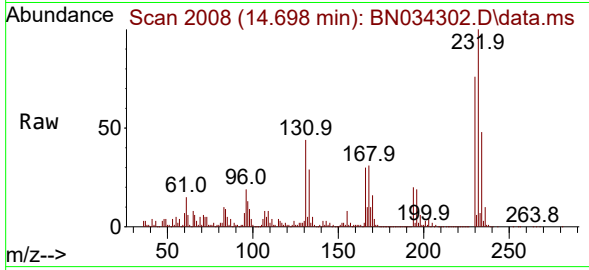
Tgt Ion:165 Resp: 56778
 Ion Ratio Lower Upper
 165 100
 63 64.3 37.8 56.8#
 182 11.0 2.3 3.5#



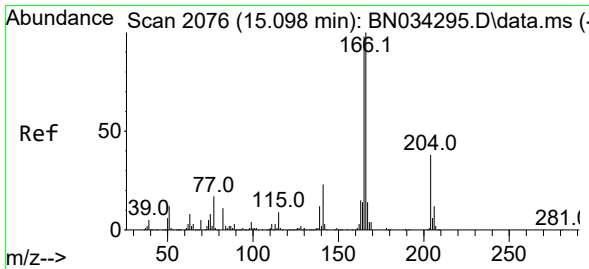
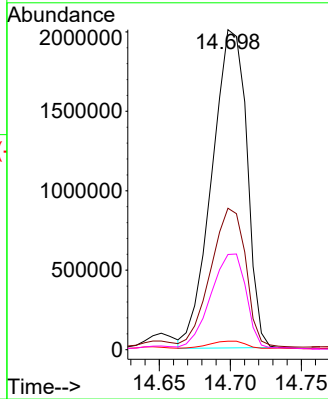
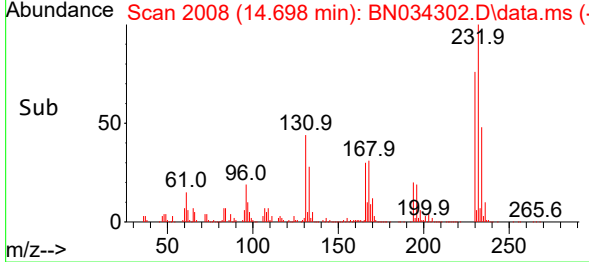


#58
 2,3,4,6-Tetrachlorophenol
 Concen: 321.360 ng/ul
 RT: 14.698 min Scan# 2008
 Delta R.T. 0.018 min
 Lab File: BN034302.D
 Acq: 01 Oct 2024 14:34

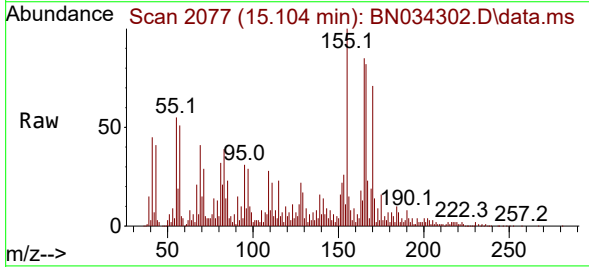
Instrument :
 BNA_N
 ClientSampleId :
 DDCJ8



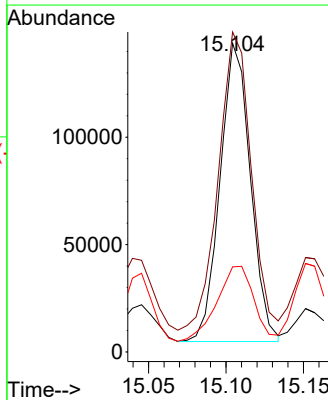
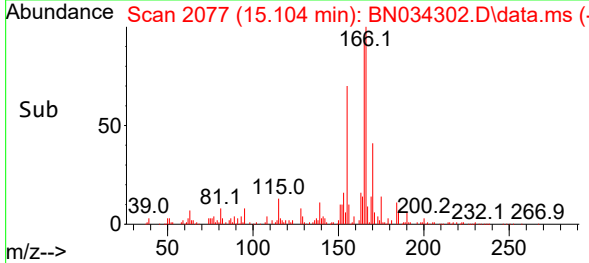
Tgt Ion:232 Resp: 3431036
 Ion Ratio Lower Upper
 232 100
 131 44.2 41.0 61.6
 130 2.7 2.2 3.2
 166 29.8 27.1 40.7

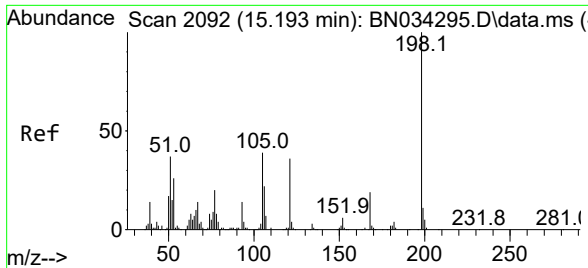


#61
 Fluorene
 Concen: 4.201 ng/ul
 RT: 15.104 min Scan# 2077
 Delta R.T. 0.006 min
 Lab File: BN034302.D
 Acq: 01 Oct 2024 14:34



Tgt Ion:166 Resp: 188892
 Ion Ratio Lower Upper
 166 100
 165 103.6 81.9 122.9
 167 27.6 10.9 16.3#

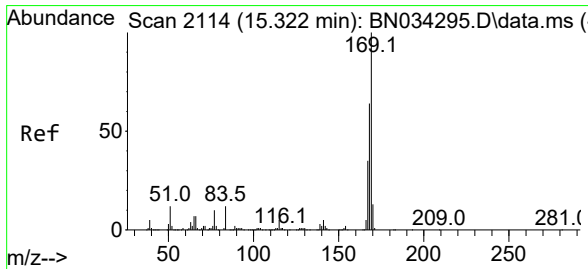
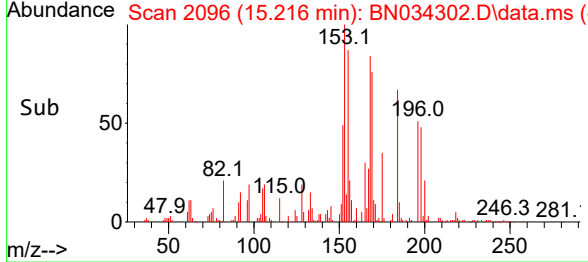
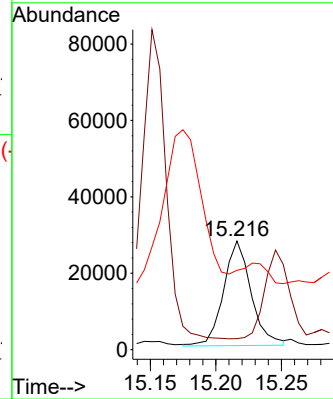
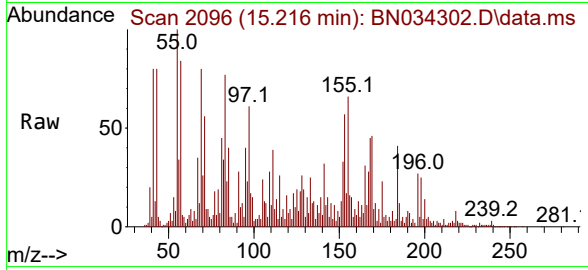




#66
 4,6-Dinitro-2-methylphenol
 Concen: 4.992 ng/ul
 RT: 15.216 min Scan# 2096
 Delta R.T. 0.024 min
 Lab File: BN034302.D
 Acq: 01 Oct 2024 14:34

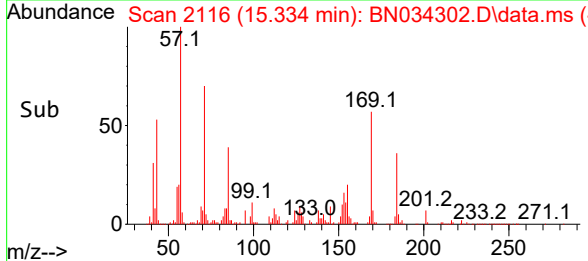
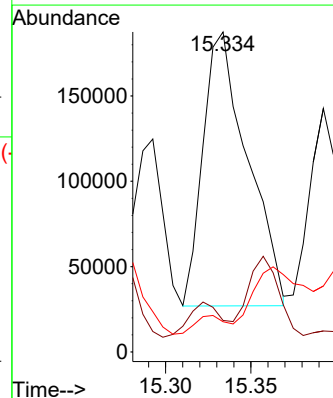
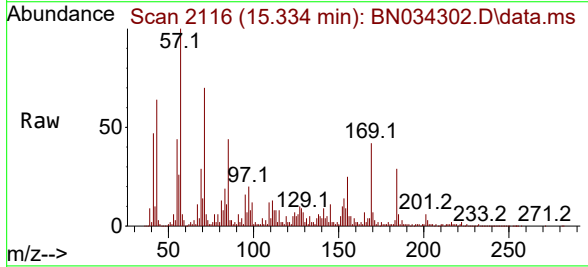
Instrument :
 BNA_N
 ClientSampleId :
 DDCJ8

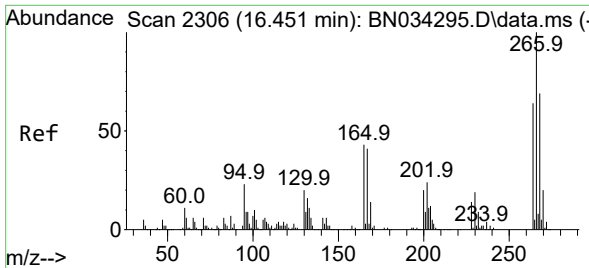
Tgt Ion:198 Resp: 40009
 Ion Ratio Lower Upper
 198 100
 182 10.2 3.2 4.8#
 77 73.1 21.1 31.7#



#67
 N-Nitrosodiphenylamine
 Concen: 8.043 ng/ul
 RT: 15.334 min Scan# 2116
 Delta R.T. 0.012 min
 Lab File: BN034302.D
 Acq: 01 Oct 2024 14:34

Tgt Ion:169 Resp: 291746
 Ion Ratio Lower Upper
 169 100
 168 9.9 52.8 79.2#
 167 9.4 28.6 43.0#



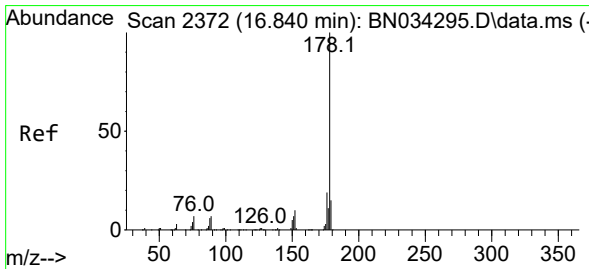
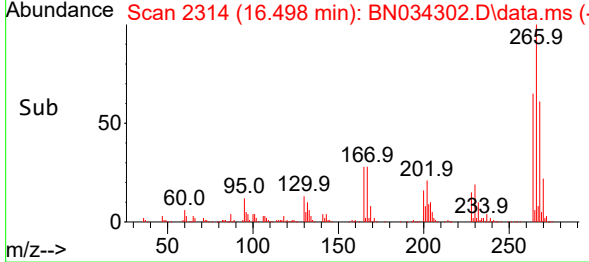
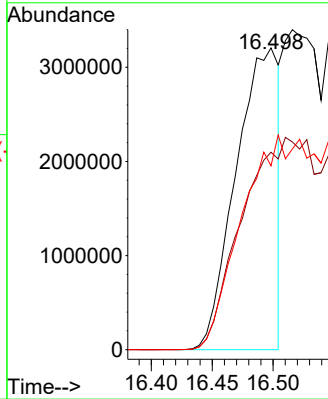
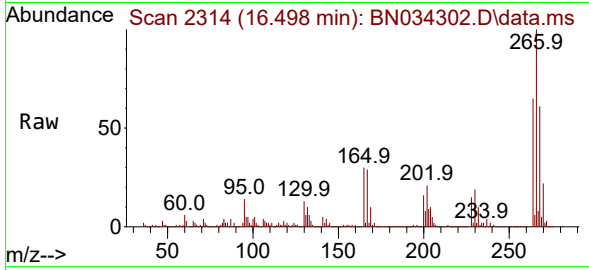


#71
 Pentachlorophenol
 Concen: 825.859 ng/u1
 RT: 16.498 min Scan# 21
 Delta R.T. 0.041 min
 Lab File: BN034302.D
 Acq: 01 Oct 2024 14:34

Instrument :
 BNA_N
 ClientSampleId :
 DDCJ8

Tgt Ion:266 Resp: 7847172

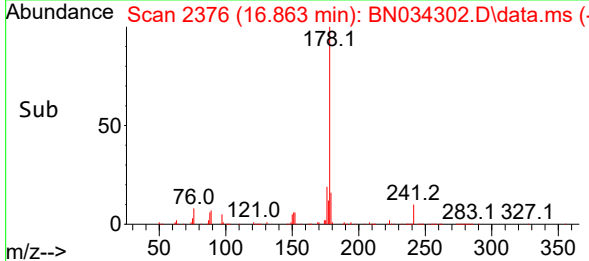
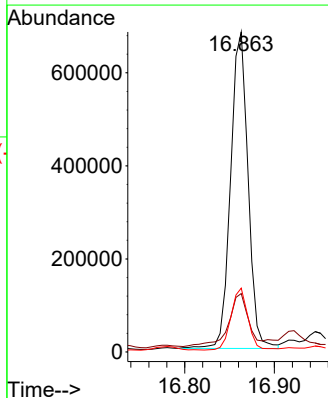
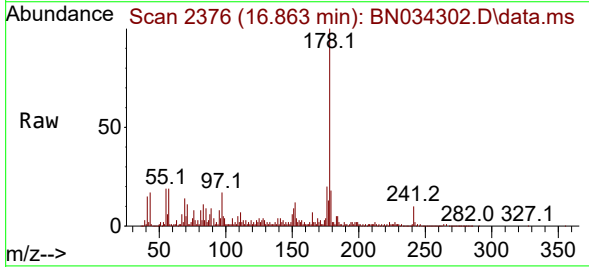
Ion	Ratio	Lower	Upper
266	100		
264	65.4	51.1	76.7
268	60.9	52.8	79.2

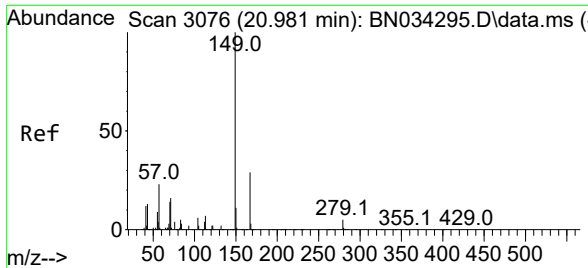


#72
 Phenanthrene
 Concen: 13.784 ng/u1
 RT: 16.863 min Scan# 2376
 Delta R.T. 0.024 min
 Lab File: BN034302.D
 Acq: 01 Oct 2024 14:34

Tgt Ion:178 Resp: 920009

Ion	Ratio	Lower	Upper
178	100		
179	18.3	11.9	17.9#
176	20.0	15.2	22.8





#86
 Bis(2-ethylhexyl)phthalate
 Concen: 1.162 ng/ul
 RT: 20.980 min Scan# 3076
 Delta R.T. 0.000 min
 Lab File: BN034302.D
 Acq: 01 Oct 2024 14:34

Instrument :
 BNA_N
 ClientSampleId :
 DDCJ8

Tgt Ion:149 Resp: 61746

Ion	Ratio	Lower	Upper
149	100		
167	33.9	20.6	31.0#
279	7.3	3.0	4.6#

