

Data Path : Z:\svoasrv\HPCHEM1\BNA_N\Data\BN100124\
 Data File : BN034308.D
 Acq On : 01 Oct 2024 18:30
 Operator : RC/JU
 Sample : SSTDCC020
 Misc :
 ALS Vial : 15 Sample Multiplier: 1

Instrument :
 BNA_N
 ClientSampleId :
 SSTD020324

Quant Time: Oct 01 23:34:40 2024
 Quant Method : Z:\svoasrv\HPCHEM1\BNA_N\Methods\SFAM-EPA-BN091124.MA.M
 Quant Title : SVOA CALIBRATION
 QLast Update : Mon Sep 30 14:14:38 2024
 Response via : Initial Calibration

Compound	R.T.	QIon	Response	Conc	Units	Dev(Min)	
Internal Standards							
1) 1,4-Dichlorobenzene-d4	7.387	152	292961	20.000	ng/ul	0.00	
20) Naphthalene-d8	10.145	136	1195497	20.000	ng/ul	0.00	
38) Acenaphthene-d10	14.039	164	718706	20.000	ng/ul	0.00	
64) Phenanthrene-d10	16.798	188	1415448	20.000	ng/ul	0.00	
79) Chrysene-d12	21.033	240	1383596	20.000	ng/ul	0.00	
88) Perylene-d12	23.745	264	1691030	20.000	ng/ul	0.00	
System Monitoring Compounds							
3) 1,4-Dioxane-d8	3.005	96	54571	7.601	ng/uL	0.00	
4) Pyridine-d5	3.393	84	380474	17.830	ng/ul	0.00	
7) Phenol-d5	6.587	99	493639	18.986	ng/ul	0.00	
9) Bis-(2-Chloroethyl)eth...	6.746	67	292415	18.127	ng/ul	0.00	
11) 2-Chlorophenol-d4	6.928	132	446347	21.809	ng/ul	0.00	
15) 4-Methylphenol-d8	8.104	113	396303	18.524	ng/ul	0.00	
21) Nitrobenzene-d5	8.534	128	206063	21.625	ng/ul	0.00	
24) 2-Nitrophenol-d4	9.246	143	220351	22.488	ng/ul	0.00	
28) 2,4-Dichlorophenol-d3	9.775	165	397475	21.539	ng/ul	0.00	
31) 4-Chloroaniline-d4	10.293	131	534289	19.125	ng/ul	0.00	
46) Dimethylphthalate-d6	13.469	166	1073110	19.979	ng/ul	0.00	
49) Acenaphthylene-d8	13.728	160	1300425	21.522	ng/ul	0.00	
54) 4-Nitrophenol-d4	14.275	143	195961	17.777	ng/ul	0.00	
60) Fluorene-d10	15.045	176	932317	20.481	ng/ul	0.00	
65) 4,6-Dinitro-2-methylph...	15.175	200	175855	20.837	ng/ul	0.00	
73) Anthracene-d10	16.898	188	1406589	21.137	ng/ul	0.00	
81) Pyrene-d10	19.204	212	1644836	21.336	ng/ul	0.00	
92) Benzo(a)pyrene-d12	23.562	264	1900559	21.880	ng/ul	0.00	
Target Compounds							
							Qvalue
2) 1,4-Dioxane	3.034	88	53359	7.046	ng/uL		91
5) Pyridine	3.411	79	362550	16.603	ng/ul		92
6) Benzaldehyde	6.546	77	288243	21.002	ng/ul		92
8) Phenol	6.616	94	479634	17.718	ng/ul		92
10) Bis(2-Chloroethyl)ether	6.834	93	379051	18.016	ng/ul		93
12) 2-Chlorophenol	6.957	128	416898	19.877	ng/ul		94
13) 2-Methylphenol	7.840	108	362932	17.938	ng/ul		100
14) 2,2'-oxybis(1-Chloropr...	7.910	45	504711	16.266	ng/ul		97
16) Acetophenone	8.204	105	570867	16.845	ng/ul		97
17) N-Nitroso-di-n-propyla...	8.198	70	267857	15.961	ng/ul		95
18) 4-Methylphenol	8.169	108	388430	17.250	ng/ul		100
19) Hexachloroethane	8.440	117	168215	19.015	ng/ul		92
22) Nitrobenzene	8.575	77	418957	17.566	ng/ul		90
23) Isophorone	9.098	82	744976	16.938	ng/ul		96
25) 2-Nitrophenol	9.275	139	227595	20.754	ng/ul		88
26) 2,4-Dimethylphenol	9.351	107	394434	17.483	ng/ul		90
27) Bis(2-Chloroethoxy)met...	9.587	93	476673	17.615	ng/ul		97
29) 2,4-Dichlorophenol	9.804	162	381049	20.394	ng/ul		97
30) Naphthalene	10.193	128	1274107	19.484	ng/ul		99
32) 4-Chloroaniline	10.316	127	482636	17.531	ng/ul		99
33) Hexachlorobutadiene	10.487	225	254121	21.199	ng/ul		97
34) Caprolactam	11.087	113	63066	8.478	ng/ul		91
35) 4-Chloro-3-methylphenol	11.457	107	359386	16.338	ng/ul		90
36) 2-Methylnaphthalene	11.816	142	845927	18.780	ng/ul		99

Data Path : Z:\svoasrv\HPCHEM1\BNA_N\Data\BN100124\
 Data File : BN034308.D
 Acq On : 01 Oct 2024 18:30
 Operator : RC/JU
 Sample : SSTDCCC020
 Misc :
 ALS Vial : 15 Sample Multiplier: 1

Instrument :
 BNA_N
 ClientSampleId :
 SSTD020324

Quant Time: Oct 01 23:34:40 2024
 Quant Method : Z:\svoasrv\HPCHEM1\BNA_N\Methods\SFAM-EPA-BN091124.MA.M
 Quant Title : SVOA CALIBRATION
 QLast Update : Mon Sep 30 14:14:38 2024
 Response via : Initial Calibration

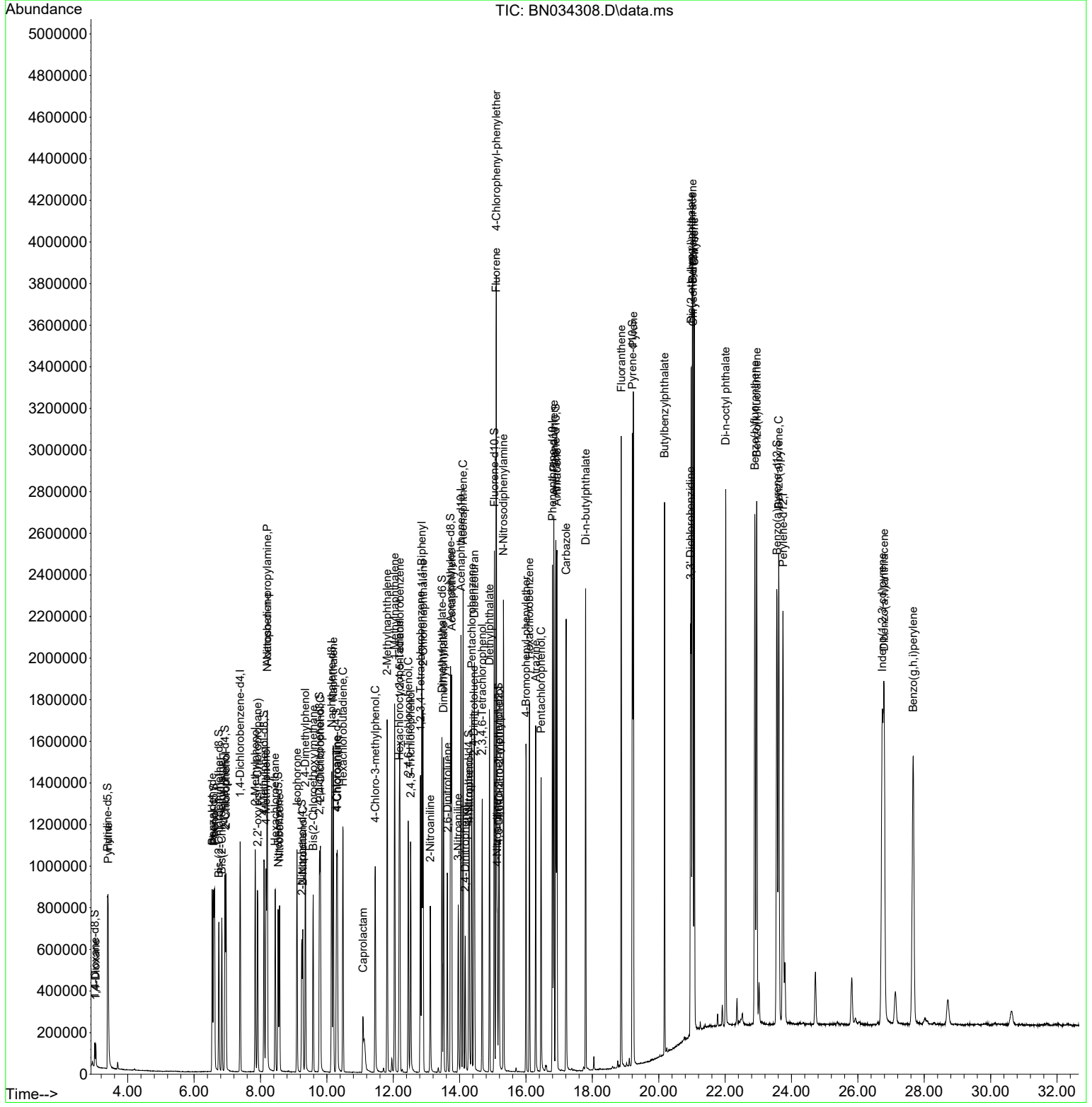
Compound	R.T.	QIon	Response	Conc	Units	Dev(Min)
37) 1-Methylnaphthalene	12.039	142	857440	18.806	ng/ul	98
39) 1,2,4,5-Tetrachloroben...	12.198	216	449809	21.679	ng/ul	96
40) Hexachlorocyclopentadiene	12.181	237	278136	21.787	ng/ul	99
41) 2,4,6-Trichlorophenol	12.451	196	283510	20.611	ng/ul	92
42) 2,4,5-Trichlorophenol	12.522	196	305982	20.252	ng/ul	97
43) 1,1'-Biphenyl	12.863	154	1086414	20.050	ng/ul	97
44) 2-Chloronaphthalene	12.898	162	863552	20.458	ng/ul	96
45) 2-Nitroaniline	13.116	65	211963	15.540	ng/ul	87
47) Dimethylphthalate	13.516	163	990531	18.095	ng/ul	98
48) 2,6-Dinitrotoluene	13.634	165	204275	18.951	ng/ul	89
50) Acenaphthylene	13.757	152	1293562	19.564	ng/ul	99
51) 3-Nitroaniline	13.957	138	216594	18.183	ng/ul	89
52) Acenaphthene	14.104	153	911284	19.305	ng/ul	100
53) 2,4-Dinitrophenol	14.169	184	146142	23.050	ng/ul#	82
55) 4-Nitrophenol	14.292	109	159326	17.020	ng/ul	88
56) Dibenzofuran	14.445	168	1248504	19.341	ng/ul	96
57) 2,4-Dinitrotoluene	14.428	165	299804	18.449	ng/ul	89
58) 2,3,4,6-Tetrachlorophenol	14.681	232	253821	20.245	ng/ul	92
59) Diethylphthalate	14.898	149	996303	17.417	ng/ul	98
61) Fluorene	15.098	166	990894	18.765	ng/ul	95
62) 4-Chlorophenyl-phenyle...	15.104	204	490981	19.183	ng/ul	96
63) 4-Nitroaniline	15.133	138	227821	18.585	ng/ul	87
66) 4,6-Dinitro-2-methylph...	15.192	198	176890	18.875	ng/ul	92
67) N-Nitrosodiphenylamine	15.322	169	853876	20.132	ng/ul	99
68) 4-Bromophenyl-phenylether	16.004	248	304480	21.184	ng/ul	91
69) Hexachlorobenzene	16.104	284	367569	22.033	ng/ul	91
70) Atrazine	16.292	200	296766	19.311	ng/ul	97
71) Pentachlorophenol	16.457	266	261656	23.549	ng/ul	98
72) Phenanthrene	16.839	178	1547327	19.825	ng/ul	99
74) Anthracene	16.933	178	1564641	19.633	ng/ul	100
75) 1,2,3,4-Tetrachloroben...	12.822	216	446303	22.656	ng/uL	99
76) Pentachlorobenzene	14.363	250	435572	21.716	ng/uL	98
77) Carbazole	17.210	167	1383582	18.863	ng/ul	99
78) Di-n-butylphthalate	17.798	149	1723696	18.486	ng/ul	98
80) Fluoranthene	18.869	202	1753842	19.461	ng/ul	98
82) Pyrene	19.233	202	1874154	19.344	ng/ul	98
83) Butylbenzylphthalate	20.174	149	785595	18.081	ng/ul	95
84) 3,3'-Dichlorobenzidine	20.957	252	619214	19.924	ng/ul	99
85) Benzo(a)anthracene	21.015	228	1910660	19.368	ng/ul	98
86) Bis(2-ethylhexyl)phtha...	20.980	149	1205462	18.955	ng/ul#	95
87) Chrysene	21.068	228	1835154	19.497	ng/ul	97
89) Di-n-octyl phthalate	22.015	149	2068885	18.387	ng/ul	100
90) Benzo(b)fluoranthene	22.892	252	1959401	19.005	ng/ul	99
91) Benzo(k)fluoranthene	22.951	252	2018703	19.848	ng/ul	99
93) Benzo(a)pyrene	23.615	252	1922594	19.740	ng/ul	98
94) Indeno(1,2,3-cd)pyrene	26.733	276	2578186	21.364	ng/ul	98
95) Dibenzo(a,h)anthracene	26.792	278	2072836	21.250	ng/ul	97
96) Benzo(g,h,i)perylene	27.668	276	2002478	21.375	ng/ul	98

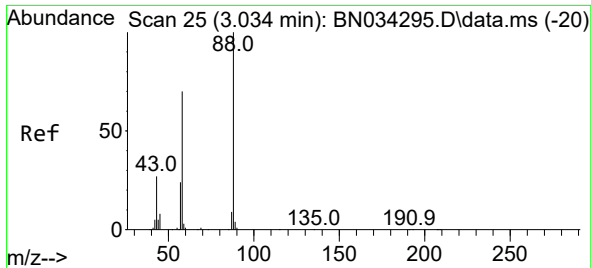
(#) = qualifier out of range (m) = manual integration (+) = signals summed

Data Path : Z:\svoasrv\HPCHEM1\BNA_N\Data\BN100124\
 Data File : BN034308.D
 Acq On : 01 Oct 2024 18:30
 Operator : RC/JU
 Sample : SSTDCCC020
 Misc :
 ALS Vial : 15 Sample Multiplier: 1

Instrument :
 BNA_N
 ClientSampleId :
 SSTD020324

Quant Time: Oct 01 23:34:40 2024
 Quant Method : Z:\svoasrv\HPCHEM1\BNA_N\Methods\SFAM-EPA-BN091124.MA.M
 Quant Title : SVOA CALIBRATION
 QLast Update : Mon Sep 30 14:14:38 2024
 Response via : Initial Calibration

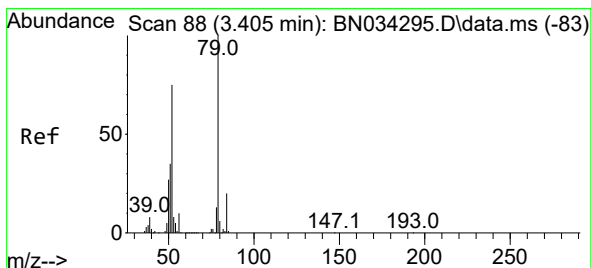
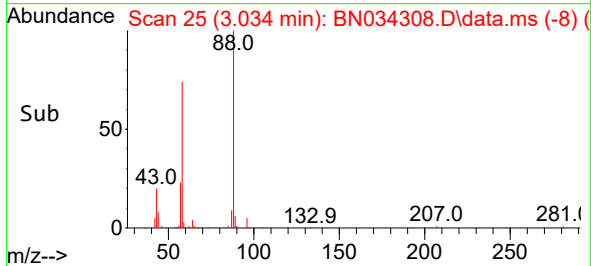
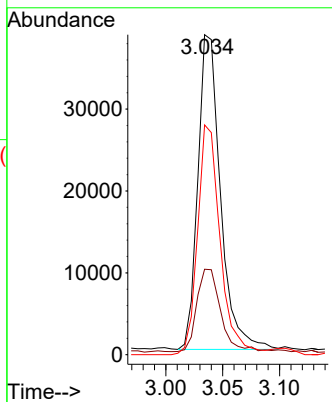
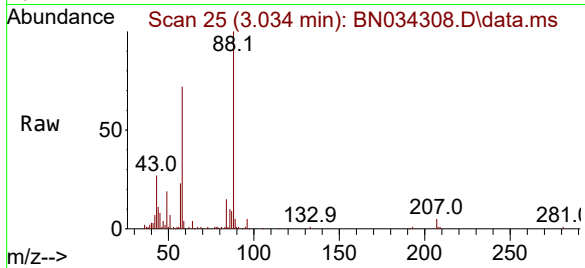




#2
 1,4-Dioxane
 Concen: 7.046 ng/uL
 RT: 3.034 min Scan# 21
 Delta R.T. -0.000 min
 Lab File: BN034308.D
 Acq: 01 Oct 2024 18:30

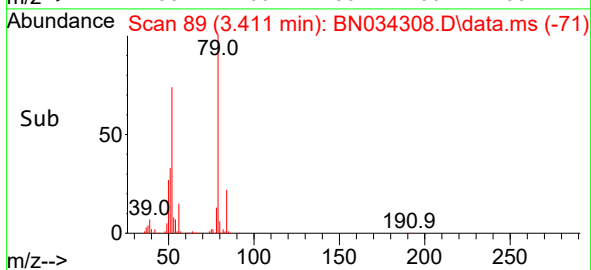
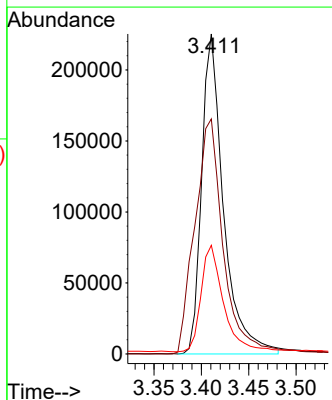
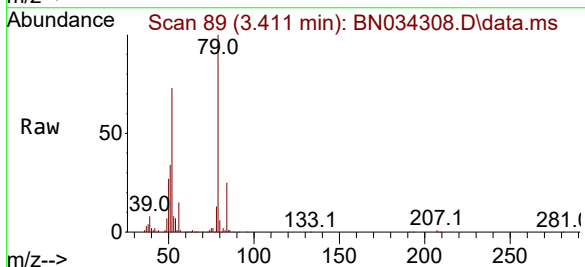
Instrument :
 BNA_N
 ClientSampleId :
 SSTD020324

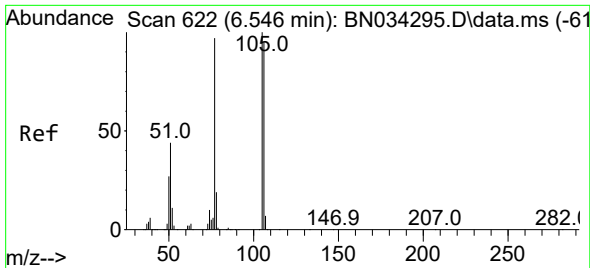
Tgt Ion: 88 Resp: 53359
 Ion Ratio Lower Upper
 88 100
 43 26.7 24.7 37.1
 58 71.8 64.6 96.8



#5
 Pyridine
 Concen: 16.603 ng/uL
 RT: 3.411 min Scan# 89
 Delta R.T. 0.006 min
 Lab File: BN034308.D
 Acq: 01 Oct 2024 18:30

Tgt Ion: 79 Resp: 362550
 Ion Ratio Lower Upper
 79 100
 52 73.4 65.2 97.8
 51 33.9 29.7 44.5





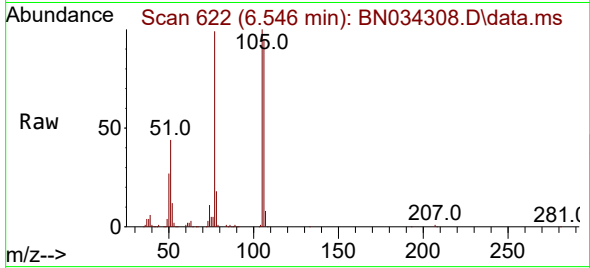
#6
Benzaldehyde
Concen: 21.002 ng/u1
RT: 6.546 min Scan# 611
Delta R.T. -0.000 min
Lab File: BN034308.D
Acq: 01 Oct 2024 18:30

Instrument :

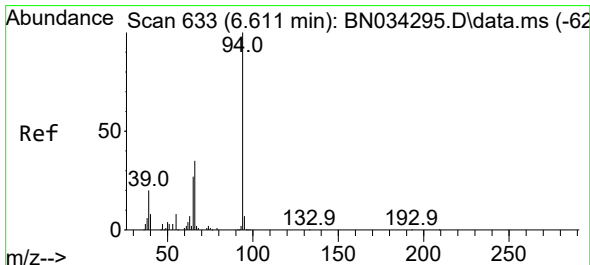
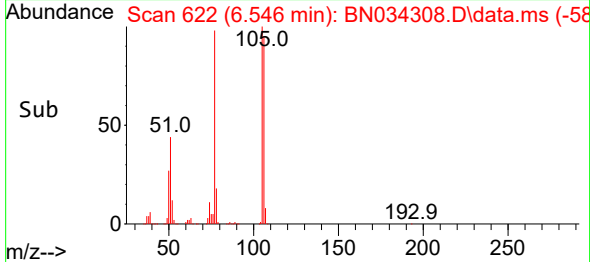
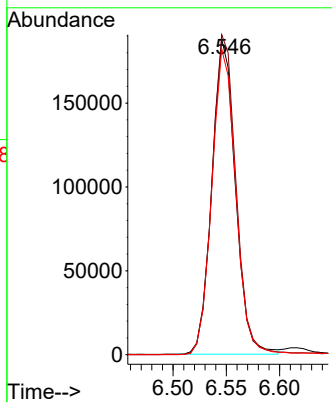
BNA_N

ClientSampleId :

SSTD020324

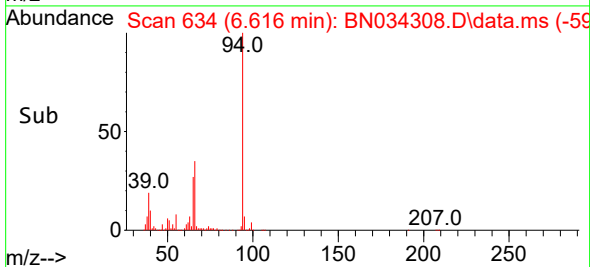
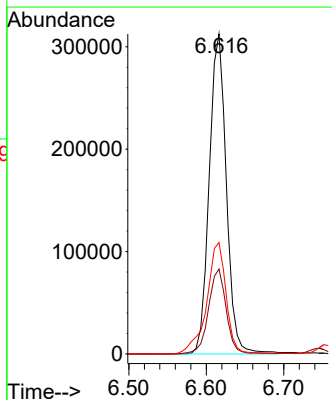
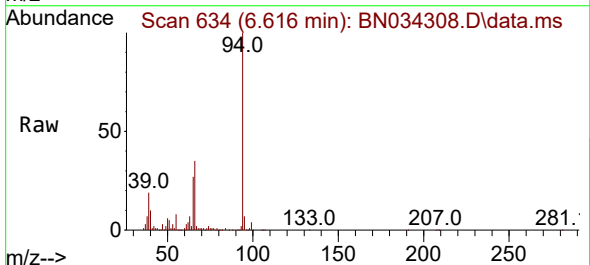


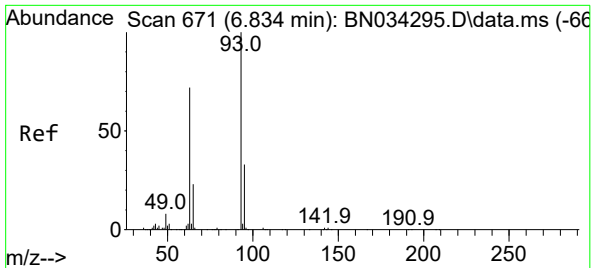
Tgt Ion: 77 Resp: 288243
Ion Ratio Lower Upper
77 100
105 101.4 76.4 114.6
106 96.8 69.8 104.6



#8
Phenol
Concen: 17.718 ng/u1
RT: 6.616 min Scan# 634
Delta R.T. 0.006 min
Lab File: BN034308.D
Acq: 01 Oct 2024 18:30

Tgt Ion: 94 Resp: 479634
Ion Ratio Lower Upper
94 100
65 26.6 24.3 36.5
66 34.8 31.8 47.6



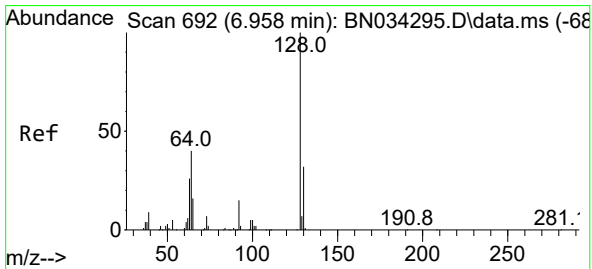
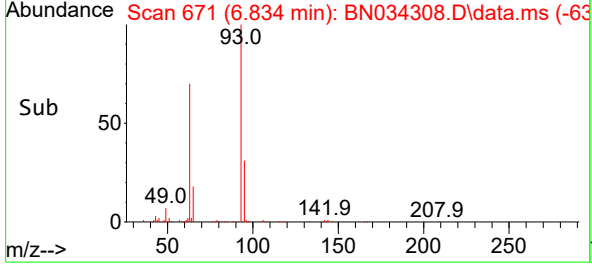
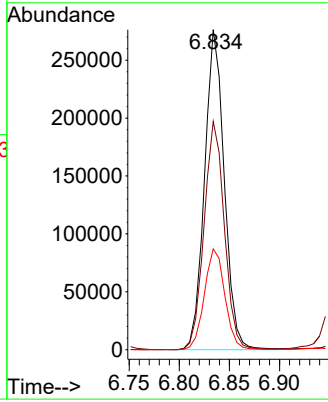
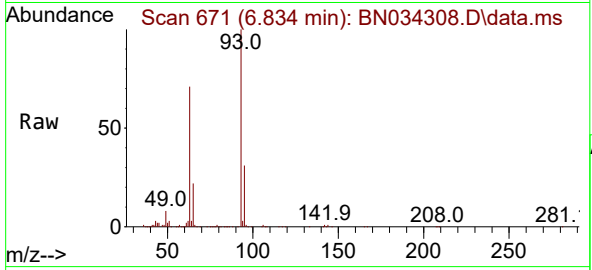


#10
 Bis(2-Chloroethyl)ether
 Concen: 18.016 ng/ul
 RT: 6.834 min Scan# 671
 Delta R.T. -0.000 min
 Lab File: BN034308.D
 Acq: 01 Oct 2024 18:30

Instrument :
 BNA_N
 ClientSampleId :
 SSTD020324

Tgt Ion: 93 Resp: 379051

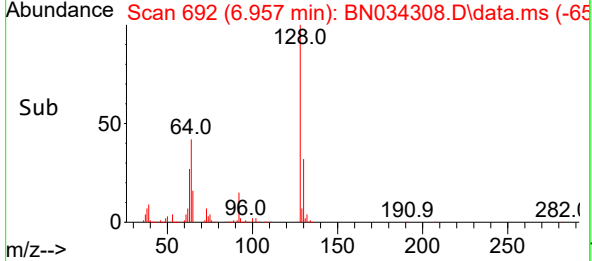
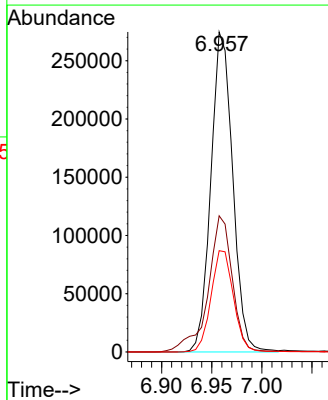
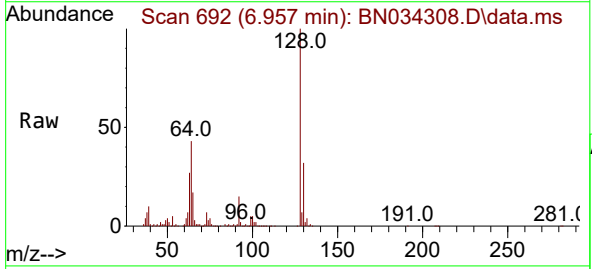
Ion	Ratio	Lower	Upper
93	100		
63	71.4	63.6	95.4
95	31.5	25.7	38.5

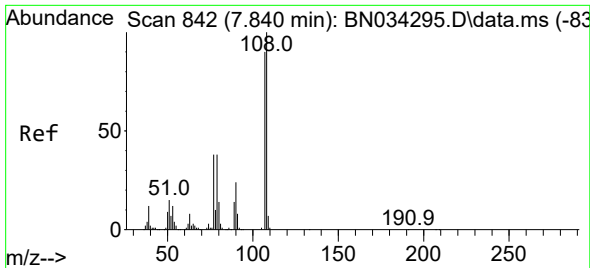


#12
 2-Chlorophenol
 Concen: 19.877 ng/ul
 RT: 6.957 min Scan# 692
 Delta R.T. -0.000 min
 Lab File: BN034308.D
 Acq: 01 Oct 2024 18:30

Tgt Ion: 128 Resp: 416898

Ion	Ratio	Lower	Upper
128	100		
64	42.6	39.1	58.7
130	31.6	25.8	38.6

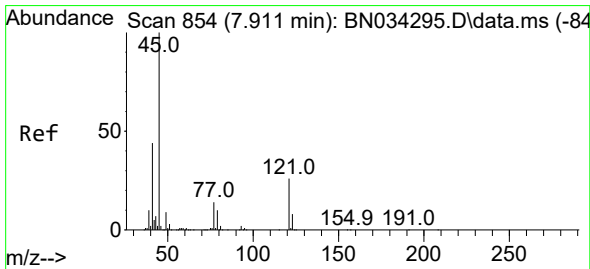
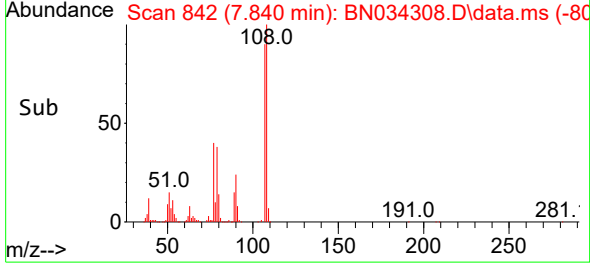
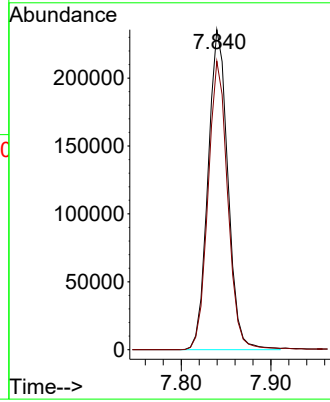
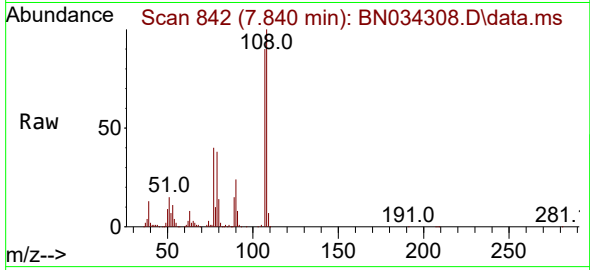




#13
 2-Methylphenol
 Concen: 17.938 ng/ul
 RT: 7.840 min Scan# 842
 Delta R.T. -0.000 min
 Lab File: BN034308.D
 Acq: 01 Oct 2024 18:30

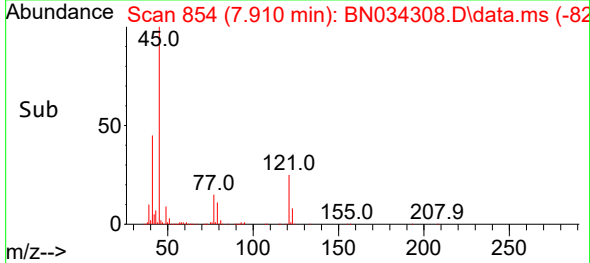
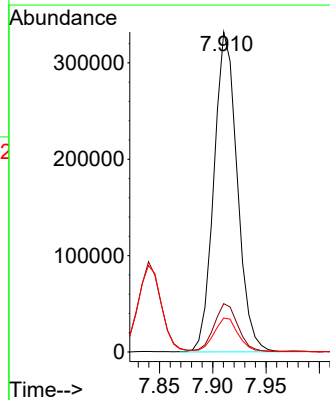
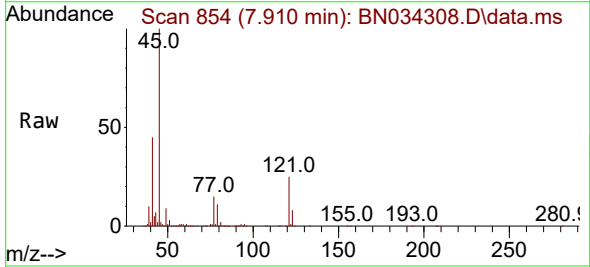
Instrument : BNA_N
 ClientSampleId : SSTD020324

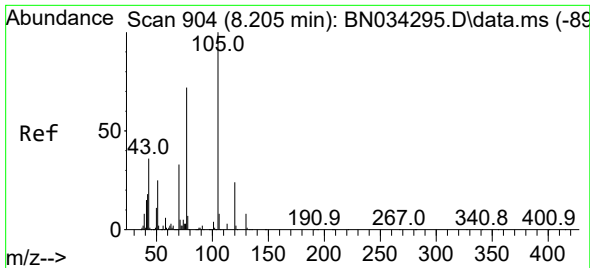
Tgt Ion: 108 Resp: 362932
 Ion Ratio Lower Upper
 108 100
 107 90.2 71.9 107.9



#14
 2,2'-oxybis(1-Chloropropane)
 Concen: 16.266 ng/ul
 RT: 7.910 min Scan# 854
 Delta R.T. -0.000 min
 Lab File: BN034308.D
 Acq: 01 Oct 2024 18:30

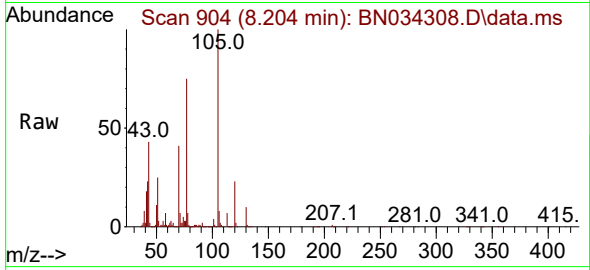
Tgt Ion: 45 Resp: 504711
 Ion Ratio Lower Upper
 45 100
 77 15.1 11.0 16.6
 79 10.6 7.8 11.8





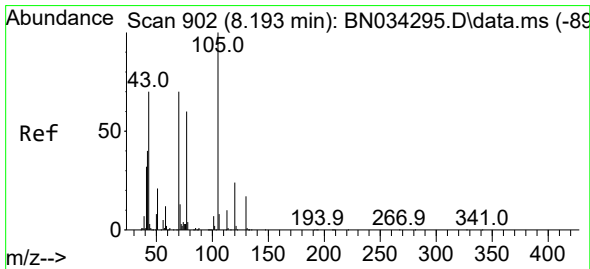
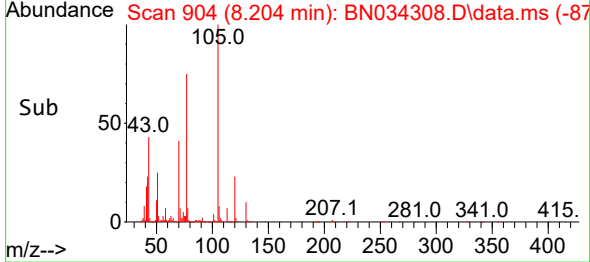
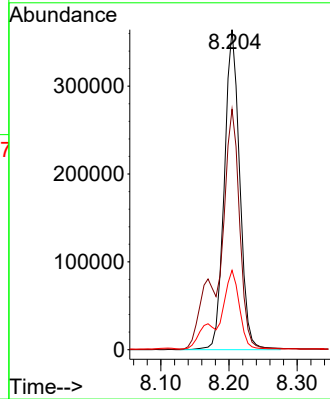
#16
 Acetophenone
 Concen: 16.845 ng/ul
 RT: 8.204 min Scan# 904
 Delta R.T. -0.000 min
 Lab File: BN034308.D
 Acq: 01 Oct 2024 18:30

Instrument : BNA_N
 ClientSampleId : SSTD020324



Tgt Ion:105 Resp: 570867

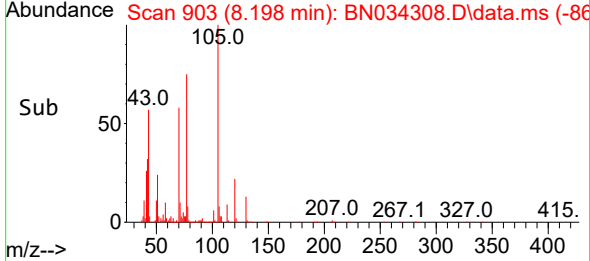
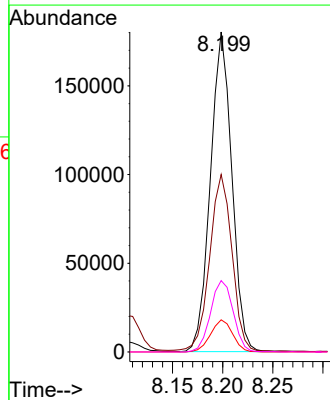
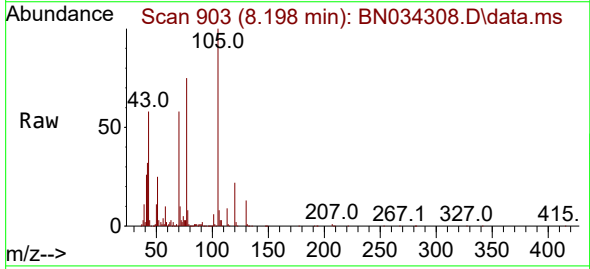
Ion	Ratio	Lower	Upper
105	100		
77	75.2	61.1	91.7
51	24.8	22.6	33.8

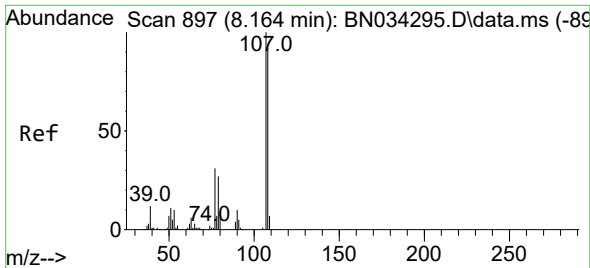


#17
 N-Nitroso-di-n-propylamine
 Concen: 15.961 ng/ul
 RT: 8.198 min Scan# 903
 Delta R.T. -0.000 min
 Lab File: BN034308.D
 Acq: 01 Oct 2024 18:30

Tgt Ion: 70 Resp: 267857

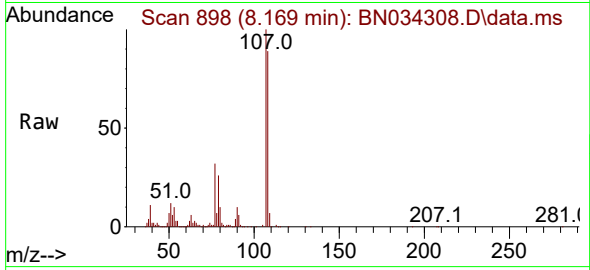
Ion	Ratio	Lower	Upper
70	100		
42	55.5	47.9	71.9
101	10.1	7.5	11.3
130	22.3	16.2	24.2



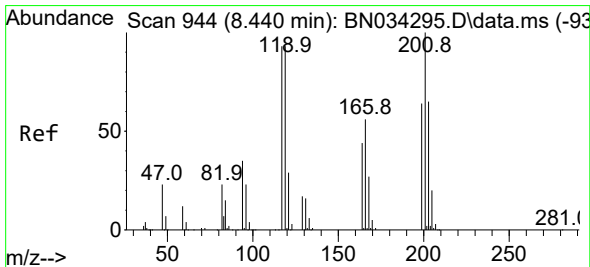
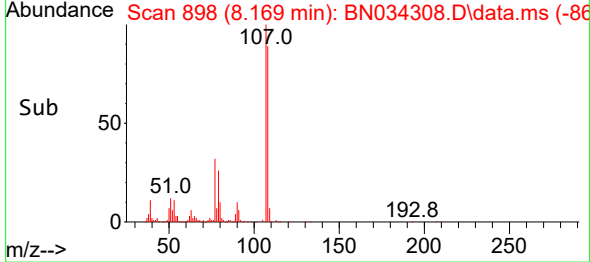
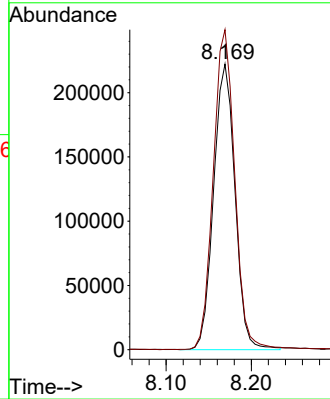


#18
 4-Methylphenol
 Concen: 17.250 ng/ul
 RT: 8.169 min Scan# 897
 Delta R.T. 0.006 min
 Lab File: BN034308.D
 Acq: 01 Oct 2024 18:30

Instrument :
 BNA_N
 ClientSampleId :
 SSTD020324

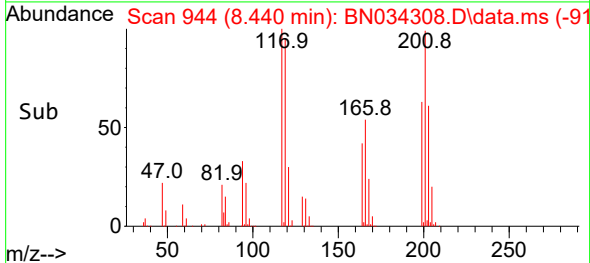
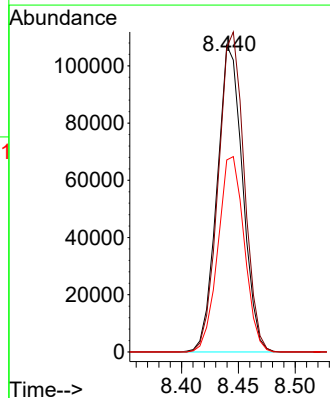
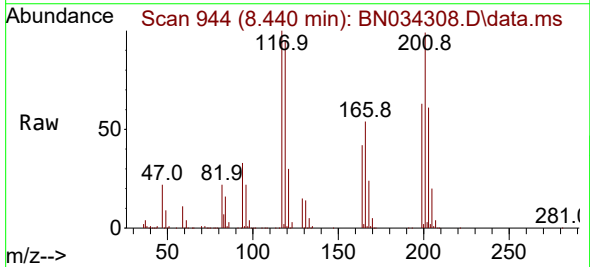


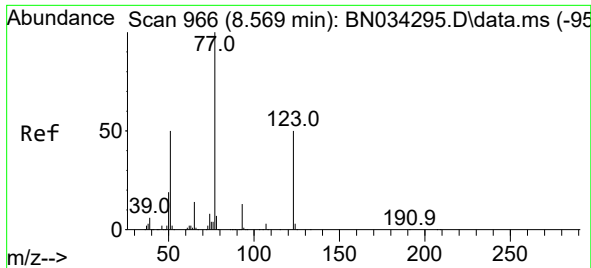
Tgt Ion:108 Resp: 388430
 Ion Ratio Lower Upper
 108 100
 107 112.0 89.4 134.2



#19
 Hexachloroethane
 Concen: 19.015 ng/ul
 RT: 8.440 min Scan# 944
 Delta R.T. -0.000 min
 Lab File: BN034308.D
 Acq: 01 Oct 2024 18:30

Tgt Ion:117 Resp: 168215
 Ion Ratio Lower Upper
 117 100
 201 99.2 73.9 110.9
 199 62.6 44.0 66.0





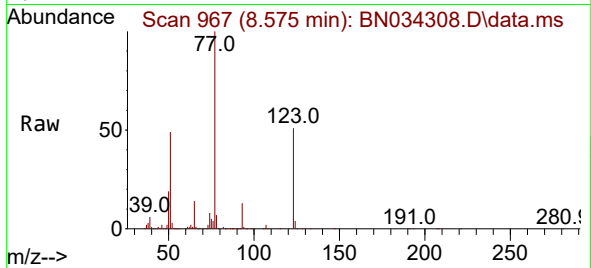
#22
 Nitrobenzene
 Concen: 17.566 ng/u1
 RT: 8.575 min Scan# 967
 Delta R.T. 0.006 min
 Lab File: BN034308.D
 Acq: 01 Oct 2024 18:30

Instrument :

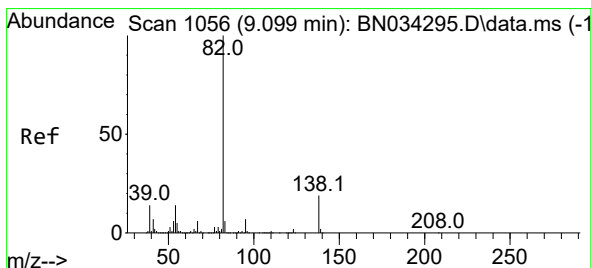
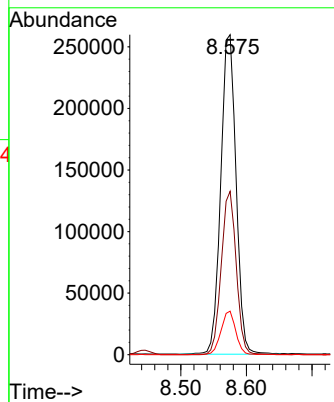
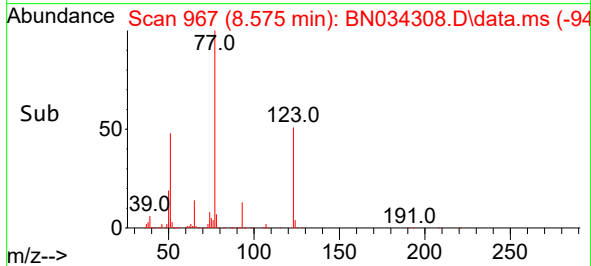
BNA_N

ClientSampleId :

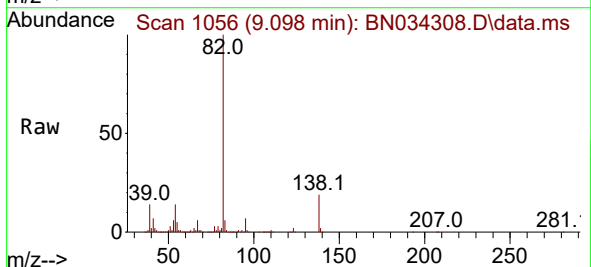
SSTD020324



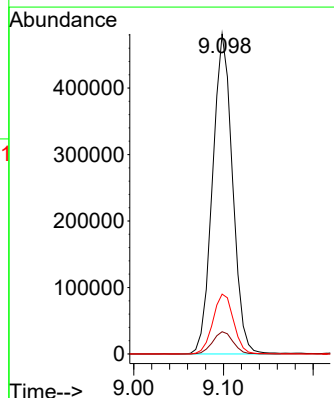
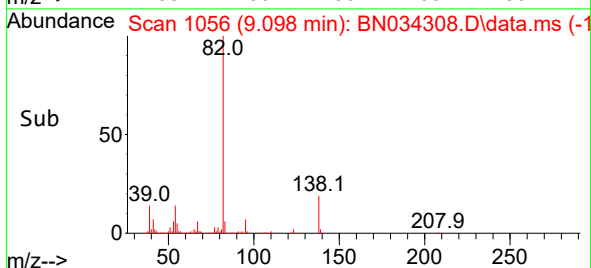
Tgt Ion: 77 Resp: 418957
 Ion Ratio Lower Upper
 77 100
 123 51.0 34.5 51.7
 65 13.6 11.0 16.6

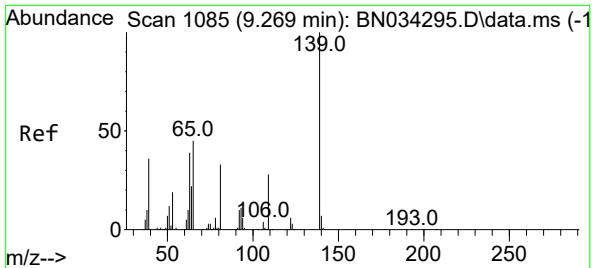


#23
 Isophorone
 Concen: 16.938 ng/u1
 RT: 9.098 min Scan# 1056
 Delta R.T. -0.000 min
 Lab File: BN034308.D
 Acq: 01 Oct 2024 18:30



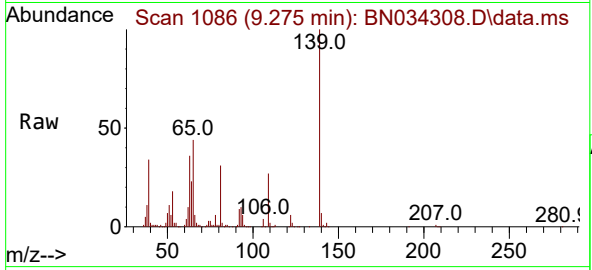
Tgt Ion: 82 Resp: 744976
 Ion Ratio Lower Upper
 82 100
 95 6.9 6.1 9.1
 138 18.7 13.4 20.0





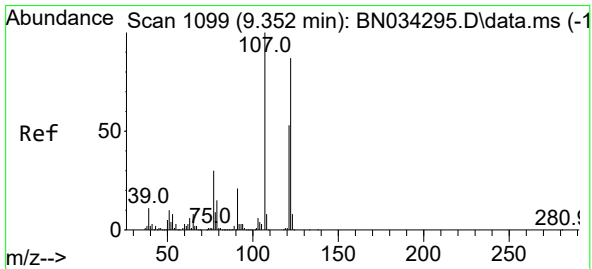
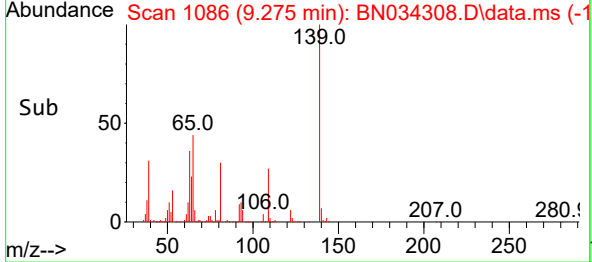
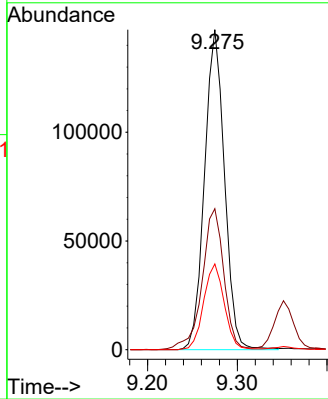
#25
 2-Nitrophenol
 Concen: 20.754 ng/ul
 RT: 9.275 min Scan# 1086
 Delta R.T. -0.000 min
 Lab File: BN034308.D
 Acq: 01 Oct 2024 18:30

Instrument : BNA_N
 ClientSampleId : BN034308.D
 SSTD020324



Tgt Ion:139 Resp: 227595

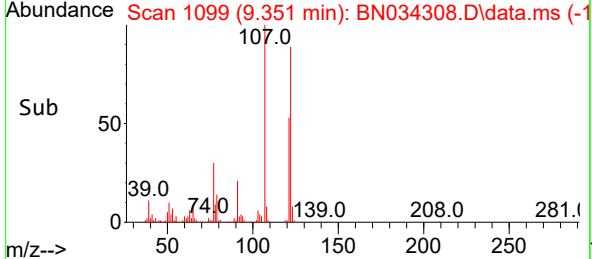
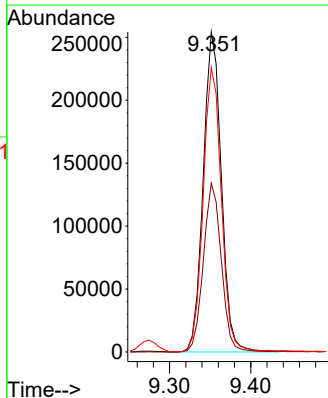
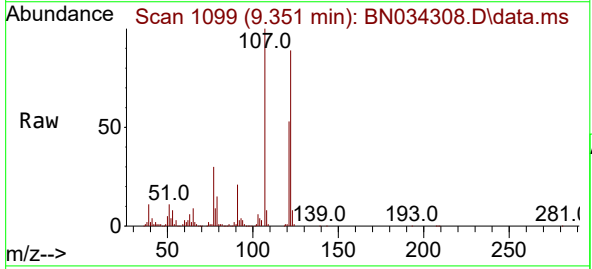
Ion	Ratio	Lower	Upper
139	100		
65	44.0	42.0	63.0
109	26.8	26.5	39.7

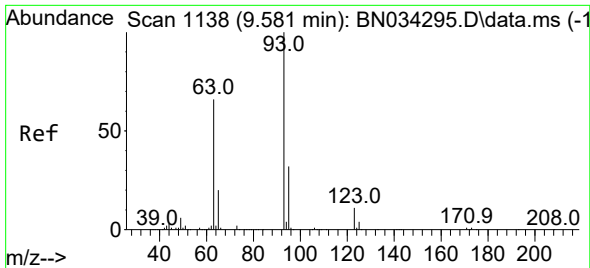


#26
 2,4-Dimethylphenol
 Concen: 17.483 ng/ul
 RT: 9.351 min Scan# 1099
 Delta R.T. -0.000 min
 Lab File: BN034308.D
 Acq: 01 Oct 2024 18:30

Tgt Ion:107 Resp: 394434

Ion	Ratio	Lower	Upper
107	100		
121	52.8	38.4	57.6
122	88.8	62.9	94.3



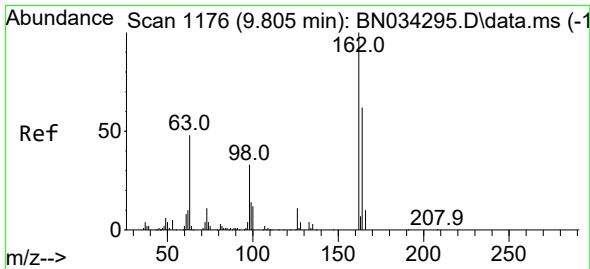
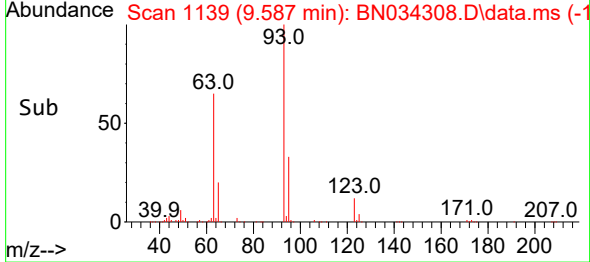
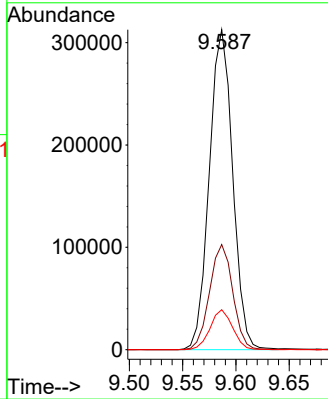
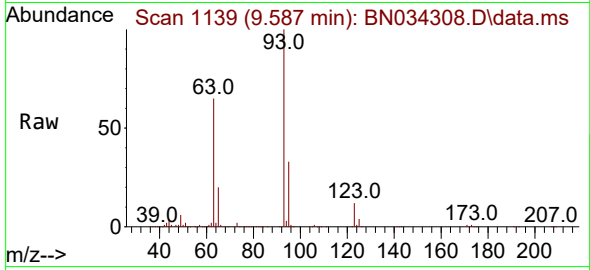


#27
 Bis(2-Chloroethoxy)methane
 Concen: 17.615 ng/ul
 RT: 9.587 min Scan# 1138
 Delta R.T. -0.000 min
 Lab File: BN034308.D
 Acq: 01 Oct 2024 18:30

Instrument :
 BNA_N
 ClientSampleId :
 SSTD020324

Tgt Ion: 93 Resp: 476673

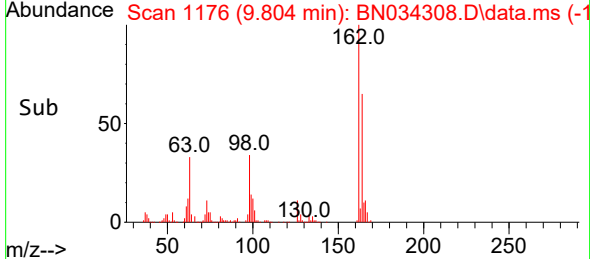
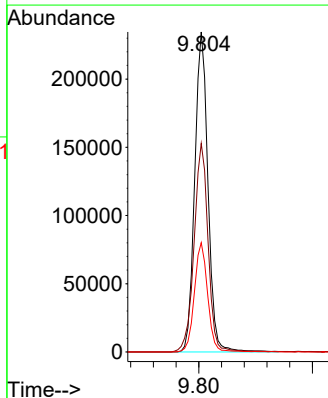
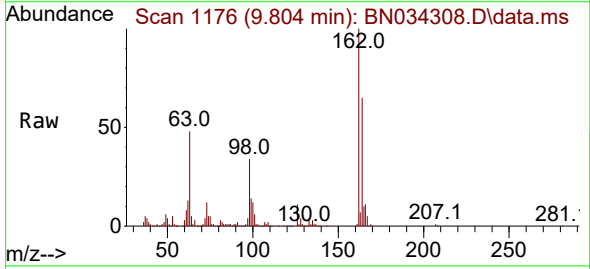
Ion	Ratio	Lower	Upper
93	100		
95	32.9	24.9	37.3
123	12.5	8.8	13.2

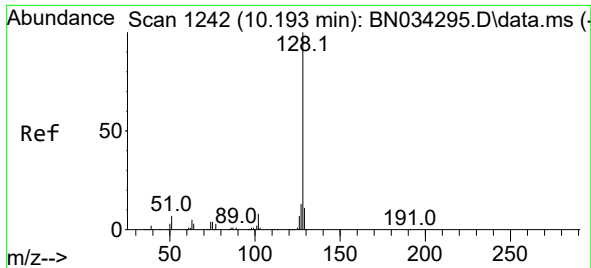


#29
 2,4-Dichlorophenol
 Concen: 20.394 ng/ul
 RT: 9.804 min Scan# 1176
 Delta R.T. -0.000 min
 Lab File: BN034308.D
 Acq: 01 Oct 2024 18:30

Tgt Ion: 162 Resp: 381049

Ion	Ratio	Lower	Upper
162	100		
164	65.1	53.0	79.6
98	34.2	30.6	46.0





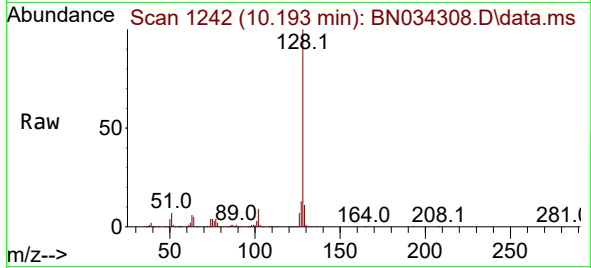
#30
 Naphthalene
 Concen: 19.484 ng/uI
 RT: 10.193 min Scan# 1242
 Delta R.T. -0.000 min
 Lab File: BN034308.D
 Acq: 01 Oct 2024 18:30

Instrument :

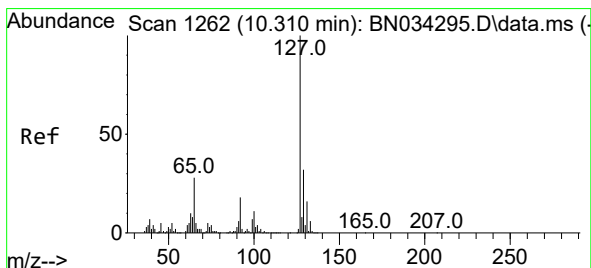
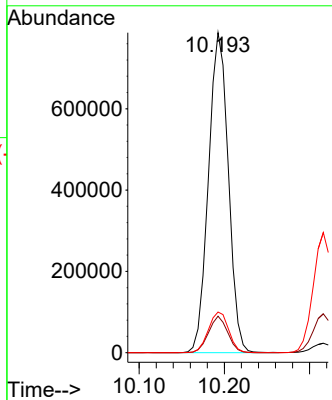
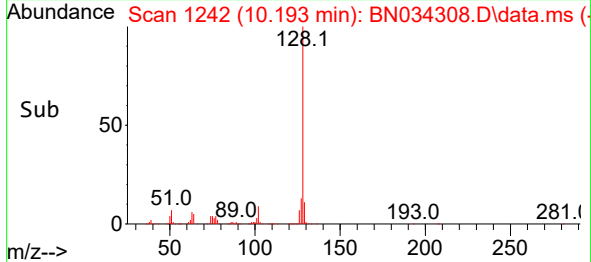
BNA_N

ClientSampleId :

SSTD020324

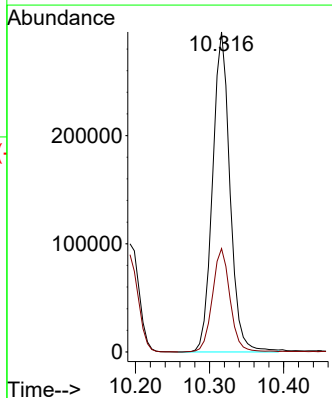
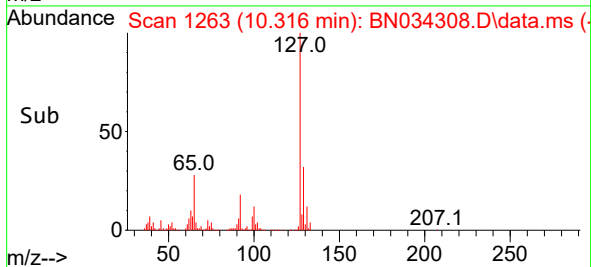
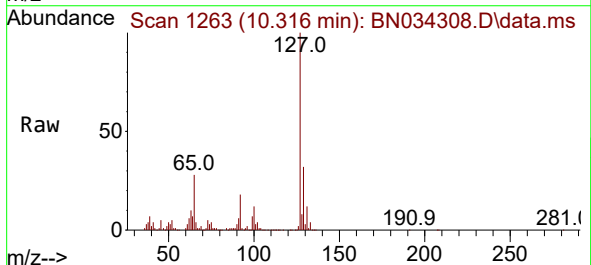


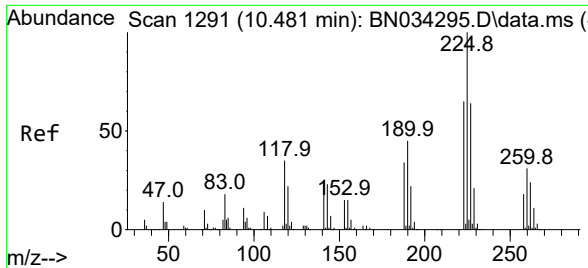
Tgt Ion:128 Resp: 1274107
 Ion Ratio Lower Upper
 128 100
 129 11.4 8.7 13.1
 127 12.7 10.6 16.0



#32
 4-Chloroaniline
 Concen: 17.531 ng/uI
 RT: 10.316 min Scan# 1263
 Delta R.T. -0.000 min
 Lab File: BN034308.D
 Acq: 01 Oct 2024 18:30

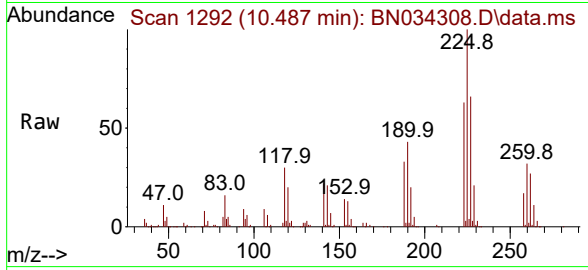
Tgt Ion:127 Resp: 482636
 Ion Ratio Lower Upper
 127 100
 129 32.3 26.2 39.2



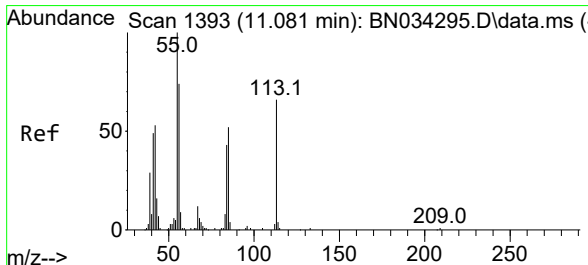
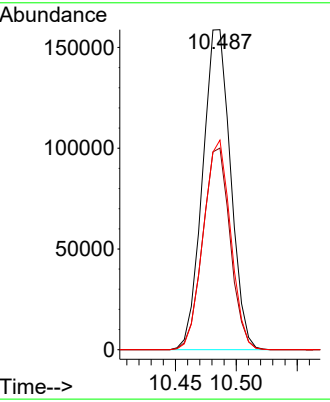
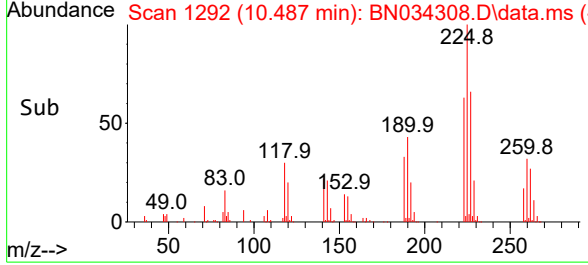


#33
 Hexachlorobutadiene
 Concen: 21.199 ng/ul
 RT: 10.487 min Scan# 1291
 Delta R.T. -0.000 min
 Lab File: BN034308.D
 Acq: 01 Oct 2024 18:30

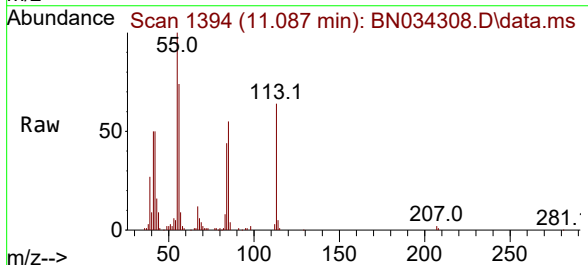
Instrument : BNA_N
 Client Sample Id : SSTD020324



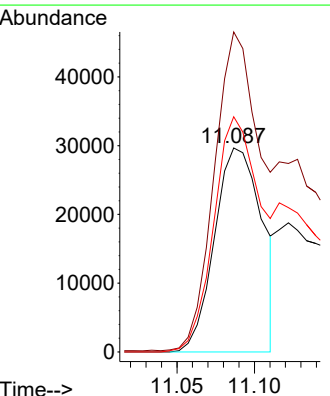
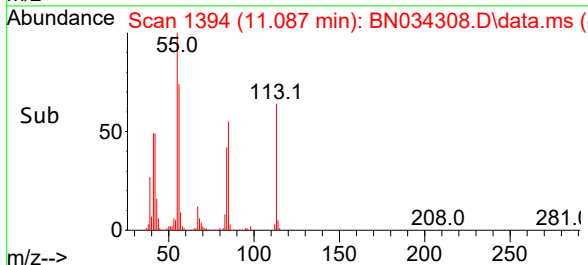
Tgt Ion: 225 Resp: 254121
 Ion Ratio Lower Upper
 225 100
 223 63.0 52.2 78.2
 227 65.5 50.1 75.1

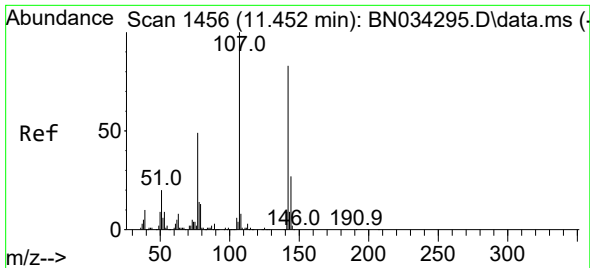


#34
 Caprolactam
 Concen: 8.478 ng/ul
 RT: 11.087 min Scan# 1394
 Delta R.T. -0.000 min
 Lab File: BN034308.D
 Acq: 01 Oct 2024 18:30



Tgt Ion: 113 Resp: 63066
 Ion Ratio Lower Upper
 113 100
 55 156.9 137.0 205.6
 56 115.3 99.7 149.5



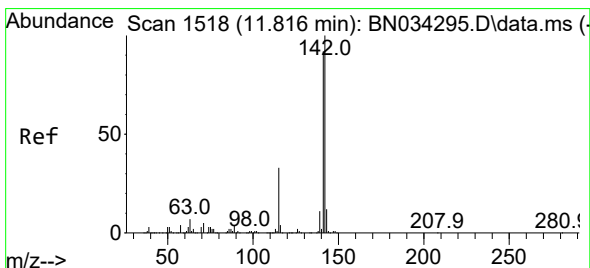
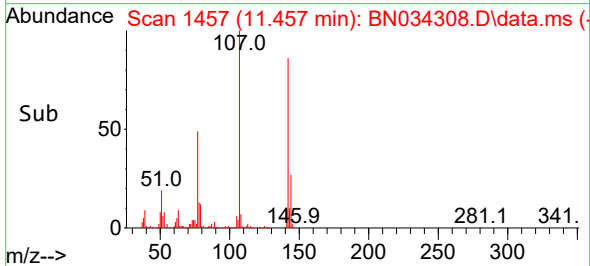
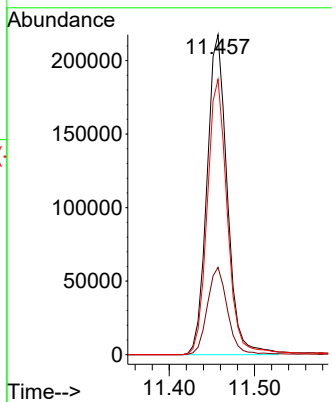
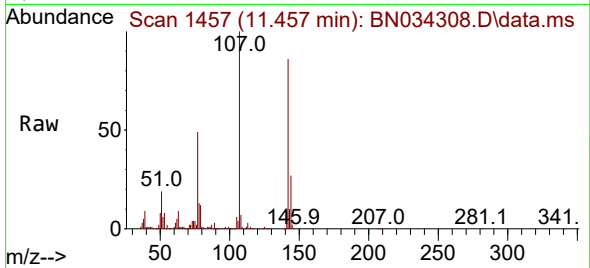


#35
 4-Chloro-3-methylphenol
 Concen: 16.338 ng/ul
 RT: 11.457 min Scan# 1457
 Delta R.T. 0.006 min
 Lab File: BN034308.D
 Acq: 01 Oct 2024 18:30

Instrument :
 BNA_N
 ClientSampleId :
 SSTD020324

Tgt Ion:107 Resp: 359386

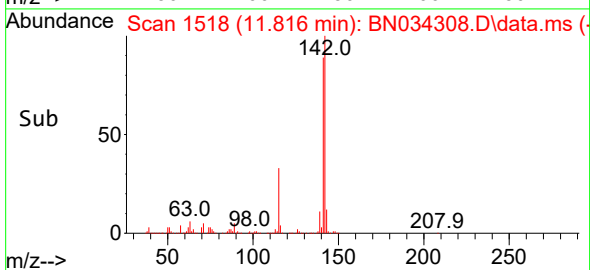
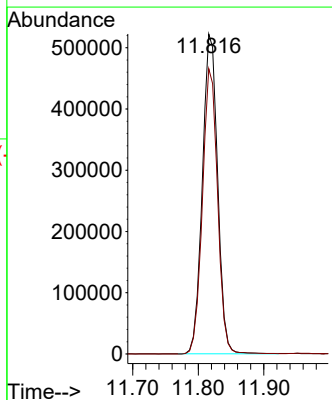
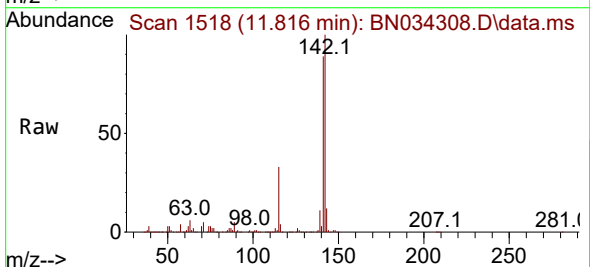
Ion	Ratio	Lower	Upper
107	100		
144	27.3	19.1	28.7
142	86.1	61.4	92.0

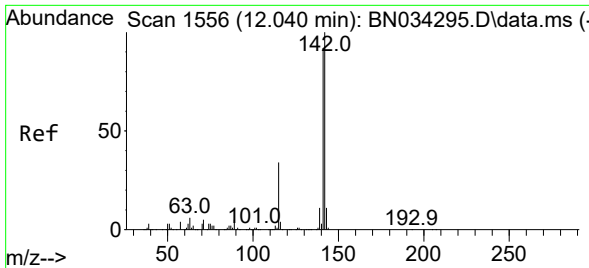


#36
 2-Methylnaphthalene
 Concen: 18.780 ng/ul
 RT: 11.816 min Scan# 1518
 Delta R.T. -0.000 min
 Lab File: BN034308.D
 Acq: 01 Oct 2024 18:30

Tgt Ion:142 Resp: 845927

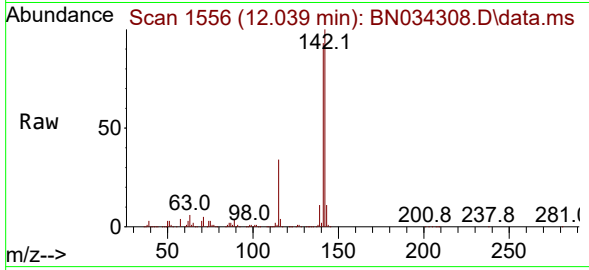
Ion	Ratio	Lower	Upper
142	100		
141	89.1	72.2	108.2



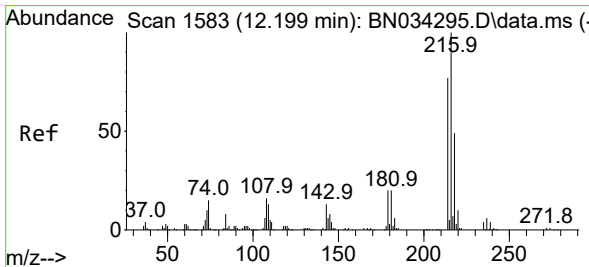
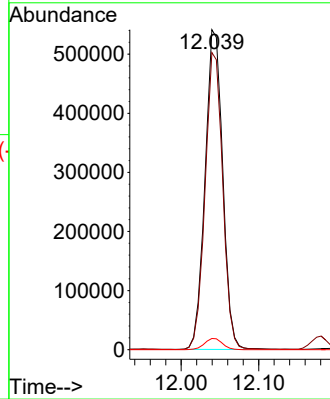
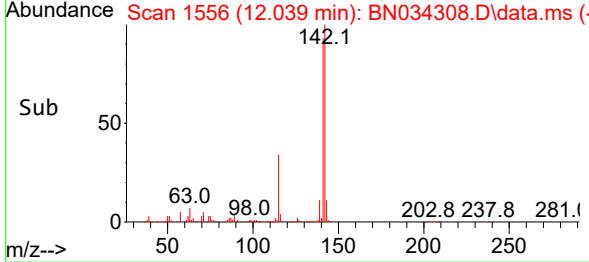


#37
 1-Methylnaphthalene
 Concen: 18.806 ng/ul
 RT: 12.039 min Scan# 1556
 Delta R.T. -0.000 min
 Lab File: BN034308.D
 Acq: 01 Oct 2024 18:30

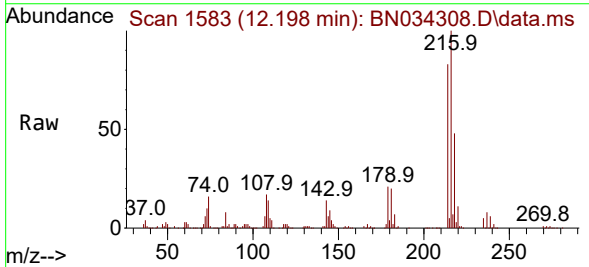
Instrument : BNA_N
 ClientSampleId : SSTD020324



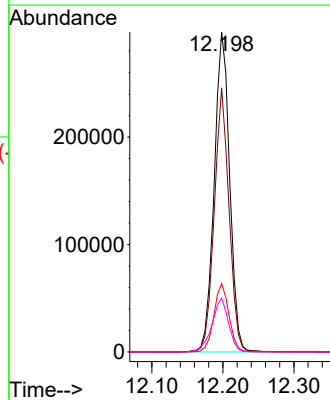
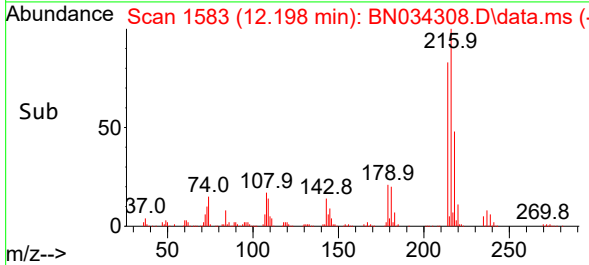
Tgt Ion:142 Resp: 857440
 Ion Ratio Lower Upper
 142 100
 141 92.9 72.5 108.7
 116 3.5 3.2 4.8

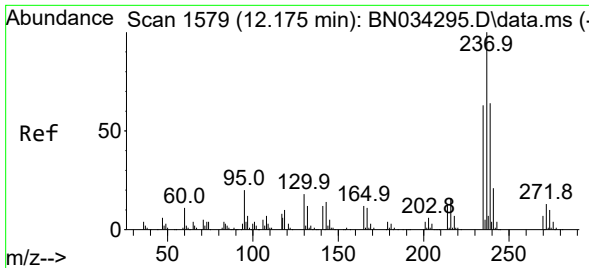


#39
 1,2,4,5-Tetrachlorobenzene
 Concen: 21.679 ng/ul
 RT: 12.198 min Scan# 1583
 Delta R.T. -0.000 min
 Lab File: BN034308.D
 Acq: 01 Oct 2024 18:30



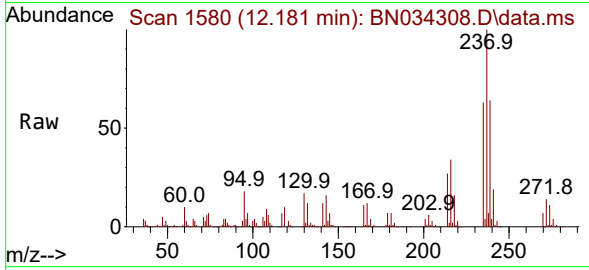
Tgt Ion:216 Resp: 449809
 Ion Ratio Lower Upper
 216 100
 214 82.5 63.0 94.6
 179 21.4 18.2 27.2
 108 16.9 15.0 22.4



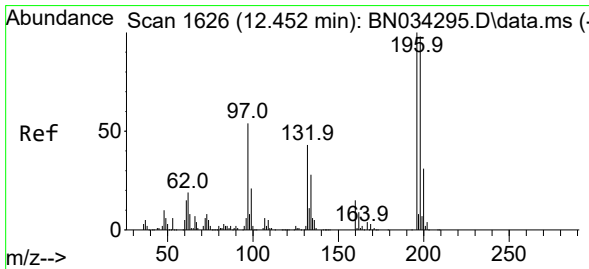
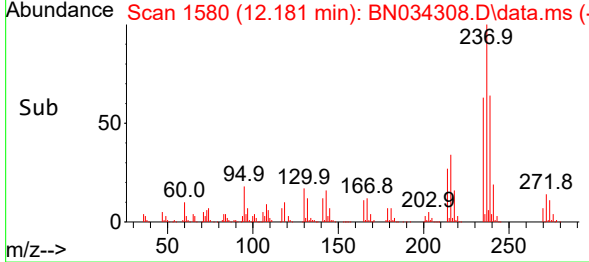
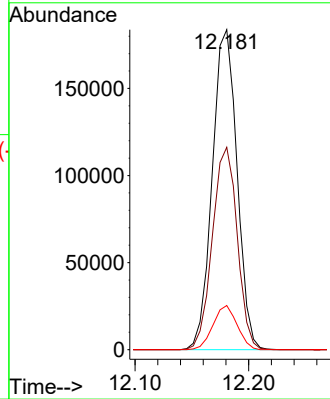


#40
 Hexachlorocyclopentadiene
 Concen: 21.787 ng/ul
 RT: 12.181 min Scan# 1580
 Delta R.T. -0.000 min
 Lab File: BN034308.D
 Acq: 01 Oct 2024 18:30

Instrument : BNA_N
 Client Sample Id : BN034308.D
 SSTD020324

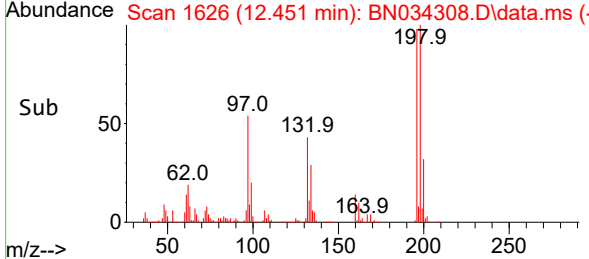
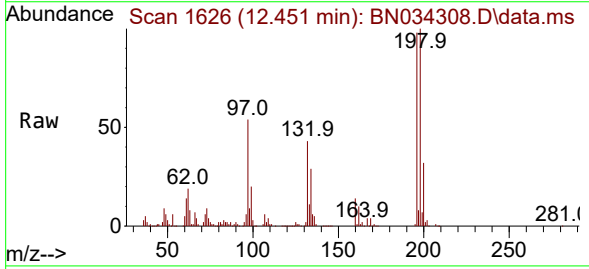
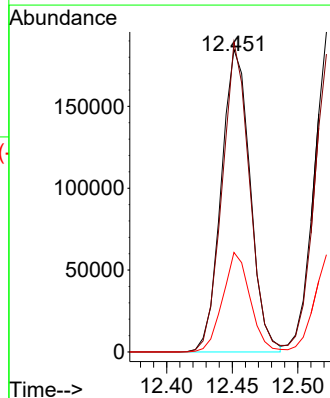


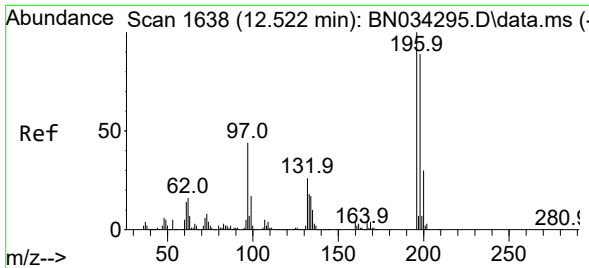
Tgt Ion: 237 Resp: 278136
 Ion Ratio Lower Upper
 237 100
 235 63.3 50.7 76.1
 272 13.8 10.1 15.1



#41
 2,4,6-Trichlorophenol
 Concen: 20.611 ng/ul
 RT: 12.451 min Scan# 1626
 Delta R.T. -0.000 min
 Lab File: BN034308.D
 Acq: 01 Oct 2024 18:30

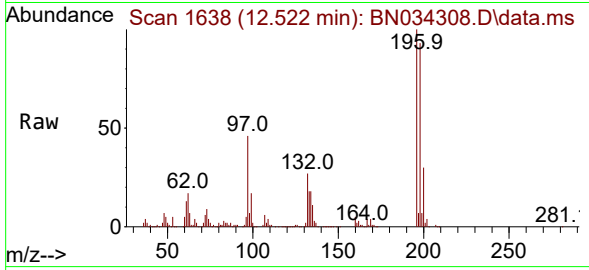
Tgt Ion: 196 Resp: 283510
 Ion Ratio Lower Upper
 196 100
 198 102.4 75.0 112.4
 200 32.9 24.7 37.1



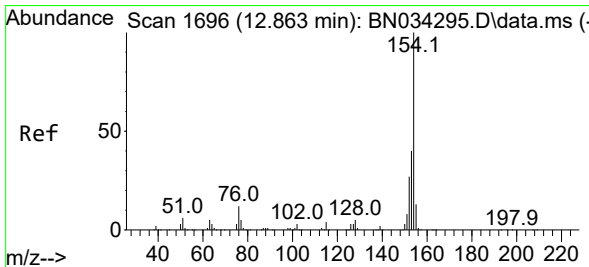
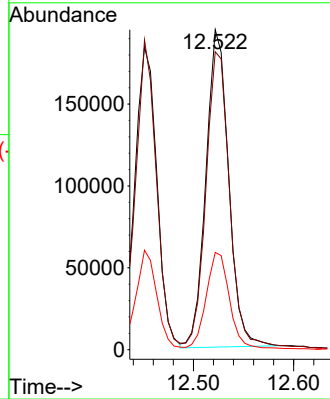
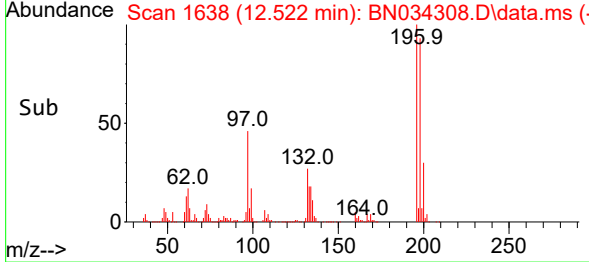


#42
 2,4,5-Trichlorophenol
 Concen: 20.252 ng/uI
 RT: 12.522 min Scan# 1638
 Delta R.T. -0.000 min
 Lab File: BN034308.D
 Acq: 01 Oct 2024 18:30

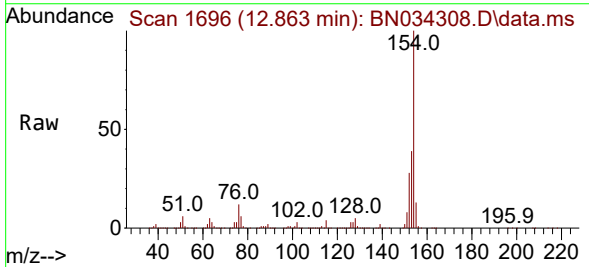
Instrument :
 BNA_N
 ClientSampleId :
 SSTD020324



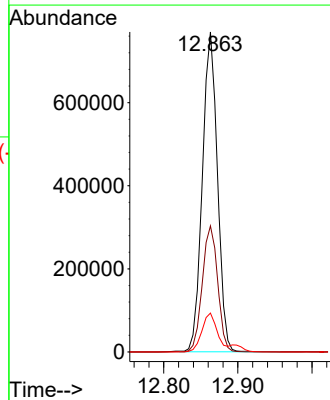
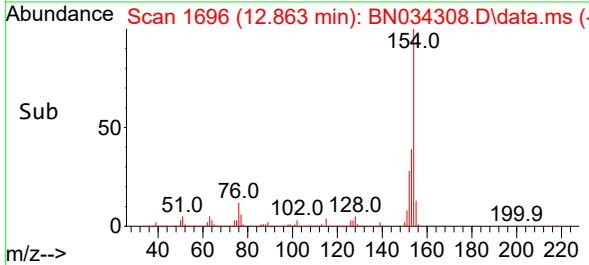
Tgt Ion:196 Resp: 305982
 Ion Ratio Lower Upper
 196 100
 198 93.1 77.1 115.7
 200 30.4 25.2 37.8

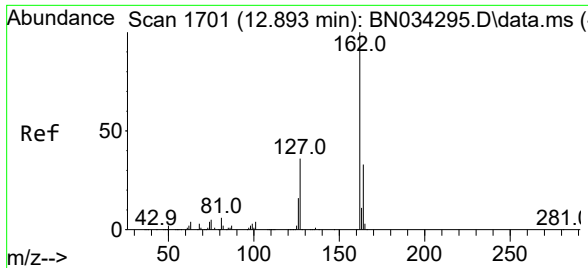


#43
 1,1'-Biphenyl
 Concen: 20.050 ng/uI
 RT: 12.863 min Scan# 1696
 Delta R.T. -0.000 min
 Lab File: BN034308.D
 Acq: 01 Oct 2024 18:30



Tgt Ion:154 Resp: 1086414
 Ion Ratio Lower Upper
 154 100
 153 39.4 33.3 49.9
 76 12.2 10.2 15.4





#44
 2-Chloronaphthalene
 Concen: 20.458 ng/ul
 RT: 12.898 min Scan# 1702
 Delta R.T. -0.000 min
 Lab File: BN034308.D
 Acq: 01 Oct 2024 18:30

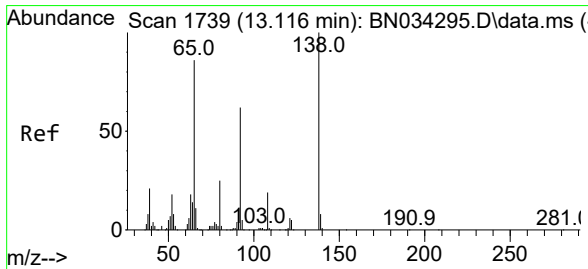
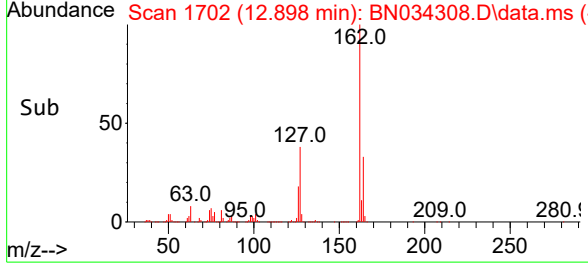
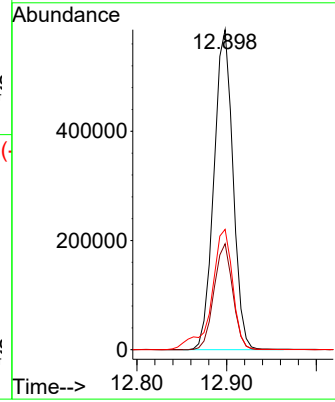
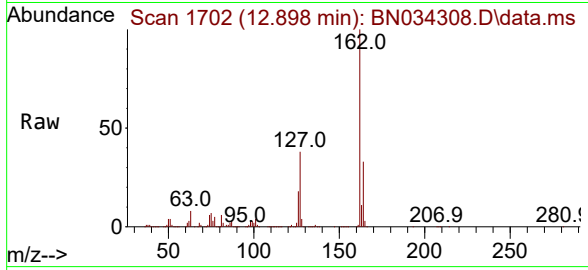
Instrument :

BNA_N

ClientSampleId :

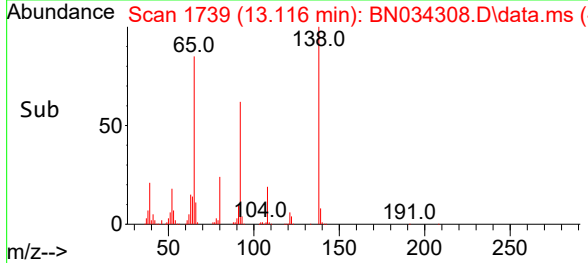
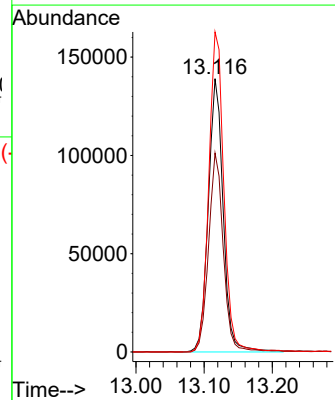
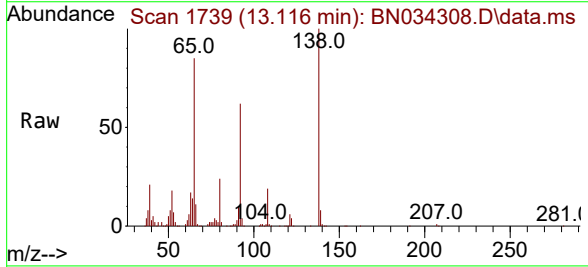
SSTD020324

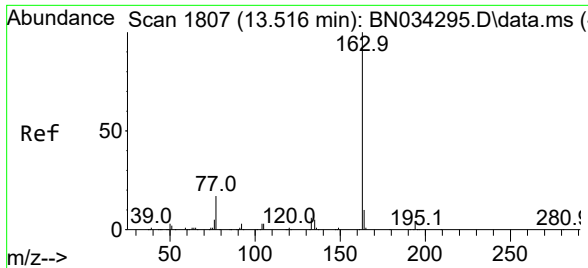
Tgt Ion:162 Resp: 863552
 Ion Ratio Lower Upper
 162 100
 164 33.1 25.1 37.7
 127 37.6 32.6 48.8



#45
 2-Nitroaniline
 Concen: 15.540 ng/ul
 RT: 13.116 min Scan# 1739
 Delta R.T. -0.000 min
 Lab File: BN034308.D
 Acq: 01 Oct 2024 18:30

Tgt Ion: 65 Resp: 211963
 Ion Ratio Lower Upper
 65 100
 92 72.8 53.2 79.8
 138 117.1 80.9 121.3



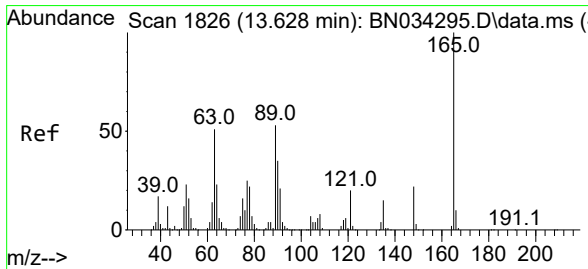
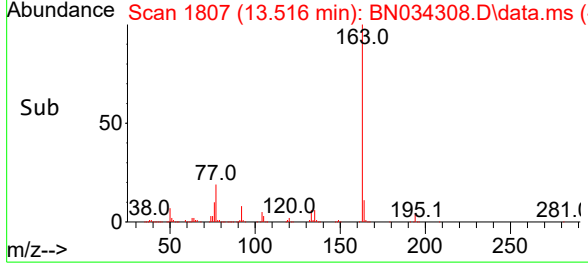
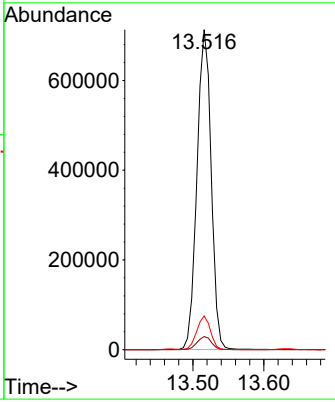
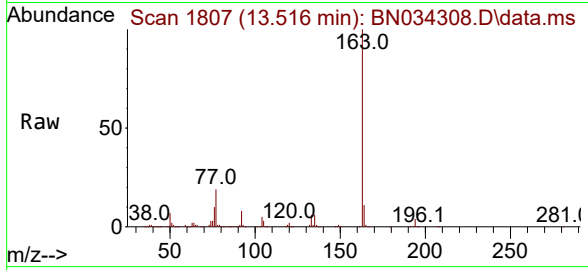


#47
 Dimethylphthalate
 Concen: 18.095 ng/ul
 RT: 13.516 min Scan# 1807
 Delta R.T. -0.000 min
 Lab File: BN034308.D
 Acq: 01 Oct 2024 18:30

Instrument : BNA_N
 ClientSampleId : SSTD020324

Tgt Ion:163 Resp: 990531

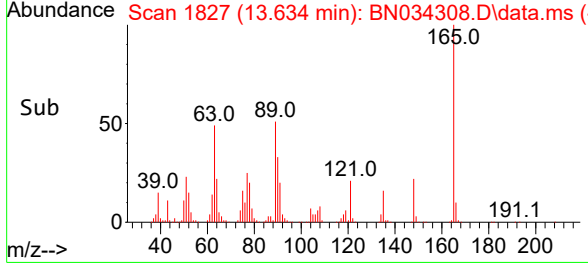
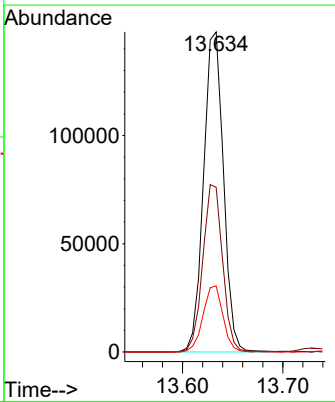
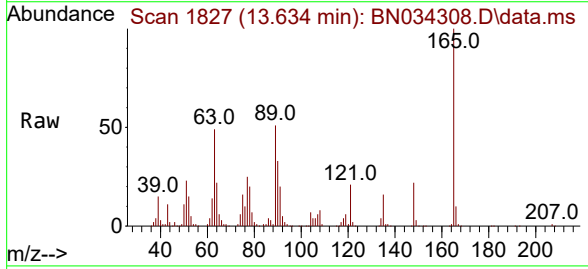
Ion	Ratio	Lower	Upper
163	100		
194	4.1	3.0	4.6
164	10.6	7.7	11.5

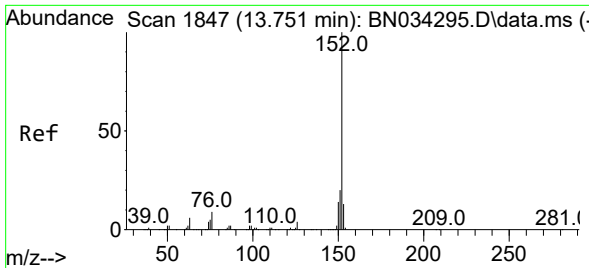


#48
 2,6-Dinitrotoluene
 Concen: 18.951 ng/ul
 RT: 13.634 min Scan# 1827
 Delta R.T. -0.000 min
 Lab File: BN034308.D
 Acq: 01 Oct 2024 18:30

Tgt Ion:165 Resp: 204275

Ion	Ratio	Lower	Upper
165	100		
89	51.4	48.6	72.8
121	20.7	19.0	28.6



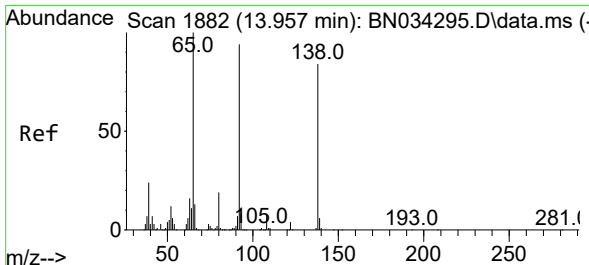
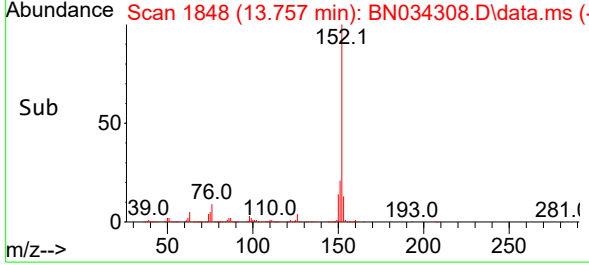
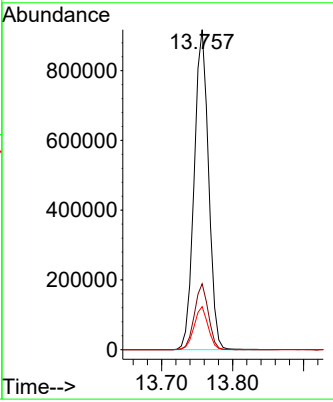
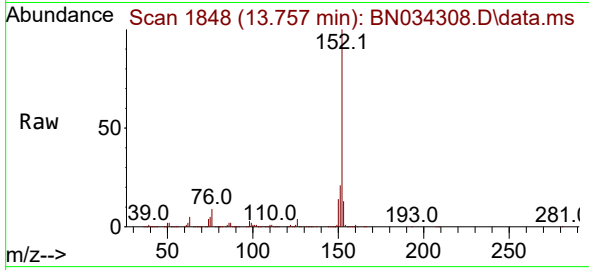


#50
 Acenaphthylene
 Concen: 19.564 ng/ul
 RT: 13.757 min Scan# 1848
 Delta R.T. -0.000 min
 Lab File: BN034308.D
 Acq: 01 Oct 2024 18:30

Instrument : BNA_N
 Client Sample Id : SSTD020324

Tgt Ion:152 Resp: 1293562

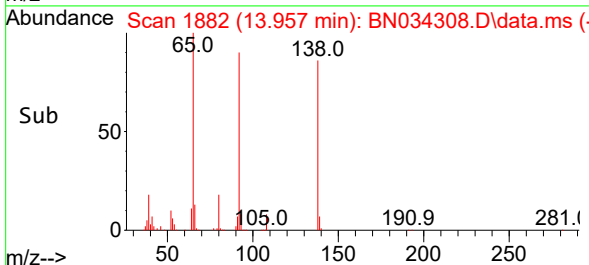
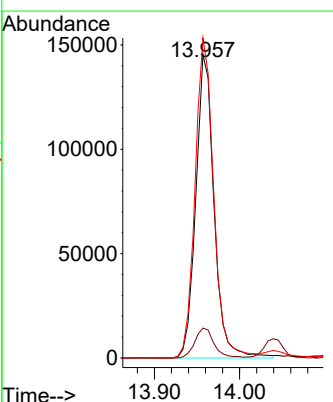
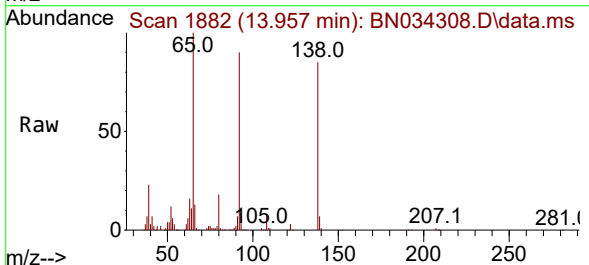
Ion	Ratio	Lower	Upper
152	100		
151	20.6	16.2	24.4
153	13.5	10.6	16.0

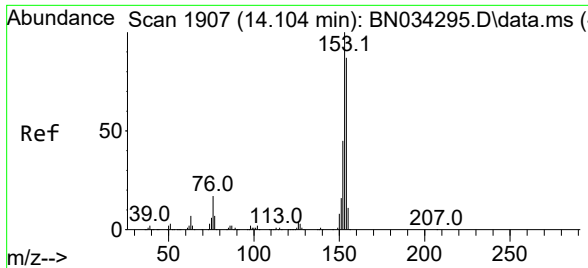


#51
 3-Nitroaniline
 Concen: 18.183 ng/ul
 RT: 13.957 min Scan# 1882
 Delta R.T. -0.000 min
 Lab File: BN034308.D
 Acq: 01 Oct 2024 18:30

Tgt Ion:138 Resp: 216594

Ion	Ratio	Lower	Upper
138	100		
108	9.9	9.0	13.4
92	105.4	94.6	141.8



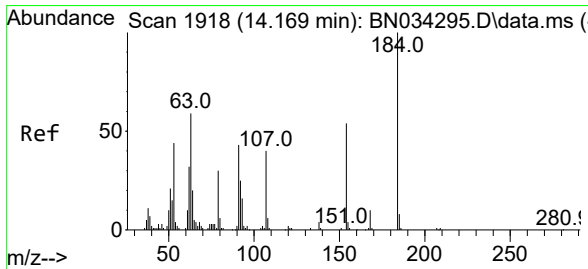
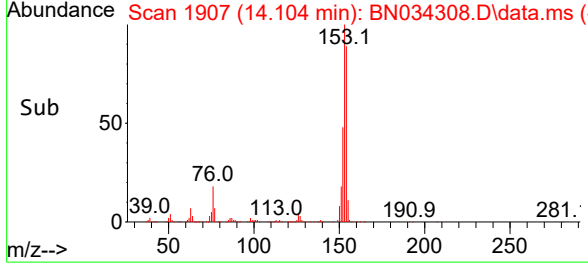
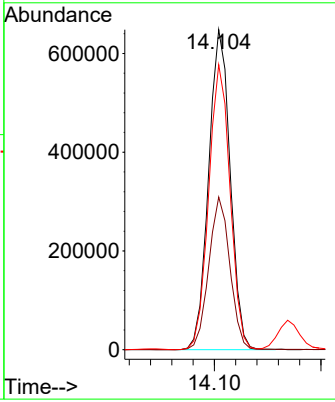
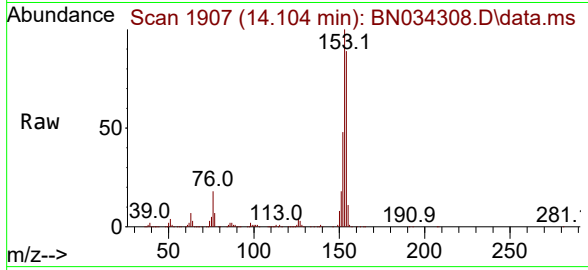


#52
 Acenaphthene
 Concen: 19.305 ng/uI
 RT: 14.104 min Scan# 1907
 Delta R.T. -0.000 min
 Lab File: BN034308.D
 Acq: 01 Oct 2024 18:30

Instrument : BNA_N
 ClientSampleId : SSTD020324

Tgt Ion:153 Resp: 911284

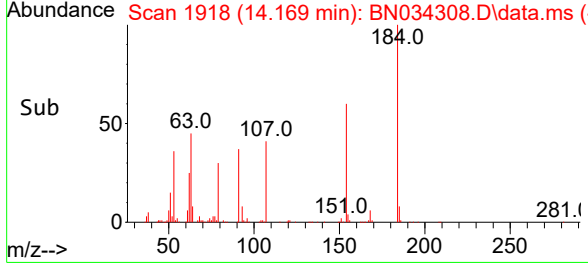
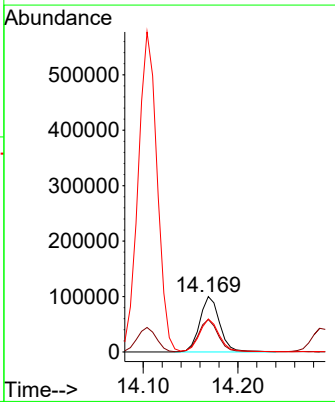
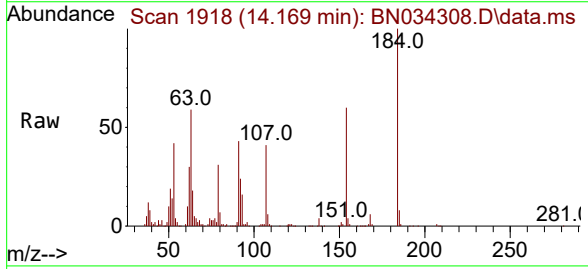
Ion	Ratio	Lower	Upper
153	100		
152	47.7	37.8	56.8
154	89.1	71.2	106.8

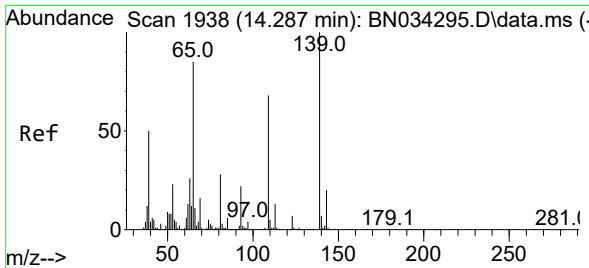


#53
 2,4-Dinitrophenol
 Concen: 23.050 ng/uI
 RT: 14.169 min Scan# 1918
 Delta R.T. -0.000 min
 Lab File: BN034308.D
 Acq: 01 Oct 2024 18:30

Tgt Ion:184 Resp: 146142

Ion	Ratio	Lower	Upper
184	100		
63	58.6	61.1	91.7#
154	59.7	58.5	87.7

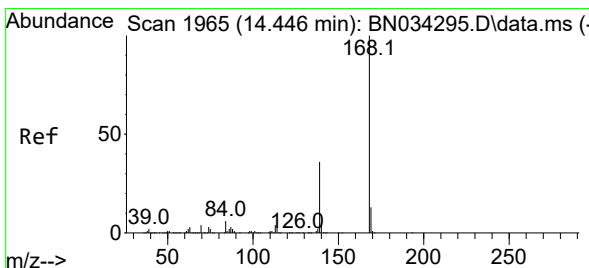
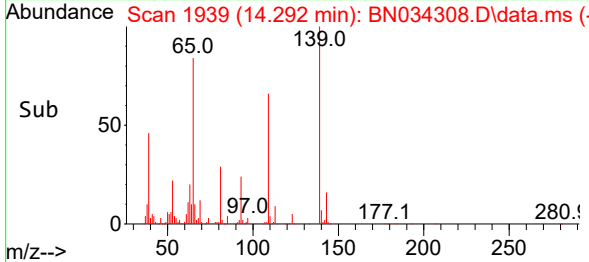
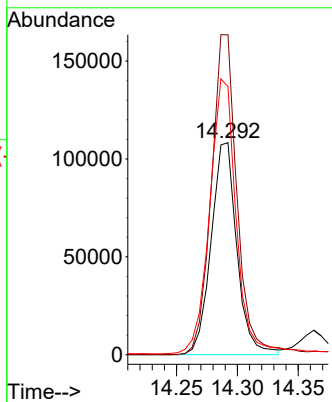
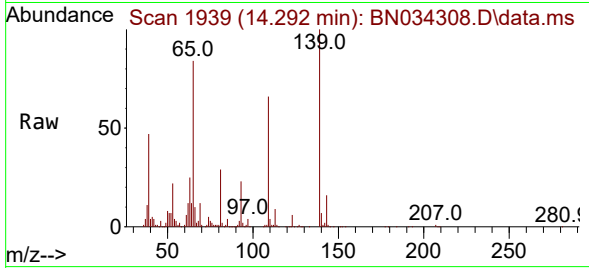




#55
 4-Nitrophenol
 Concen: 17.020 ng/ul
 RT: 14.292 min Scan# 1939
 Delta R.T. 0.006 min
 Lab File: BN034308.D
 Acq: 01 Oct 2024 18:30

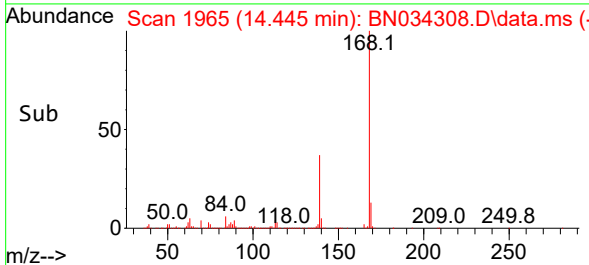
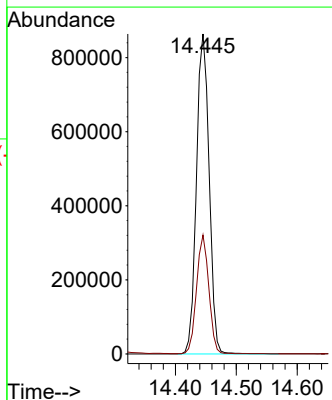
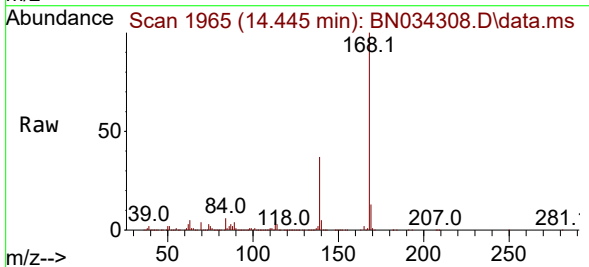
Instrument :
 BNA_N
 ClientSampleId :
 SSTD020324

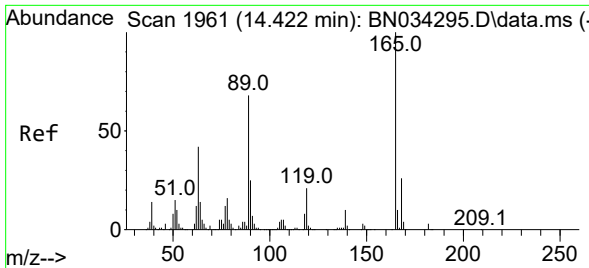
Tgt Ion:109 Resp: 159326
 Ion Ratio Lower Upper
 109 100
 139 150.9 102.8 154.2
 65 126.5 97.7 146.5



#56
 Dibenzofuran
 Concen: 19.341 ng/ul
 RT: 14.445 min Scan# 1965
 Delta R.T. -0.000 min
 Lab File: BN034308.D
 Acq: 01 Oct 2024 18:30

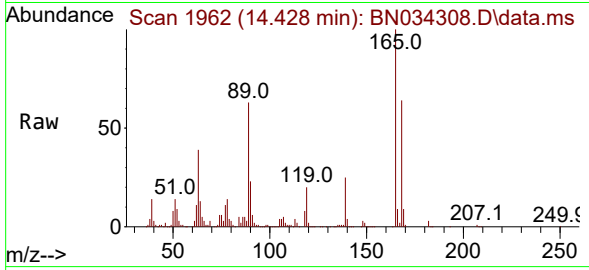
Tgt Ion:168 Resp: 1248504
 Ion Ratio Lower Upper
 168 100
 139 37.1 31.7 47.5





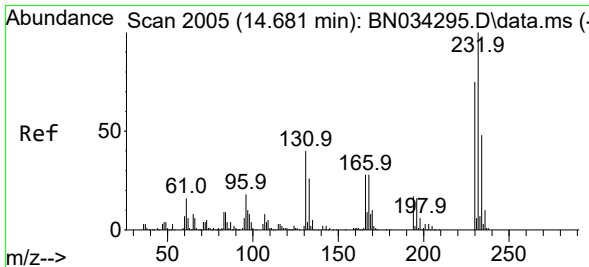
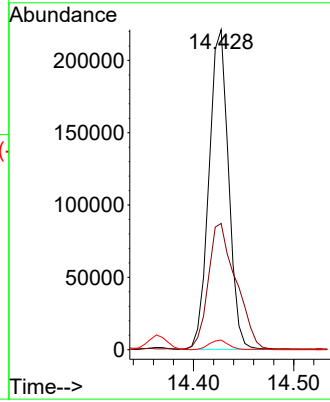
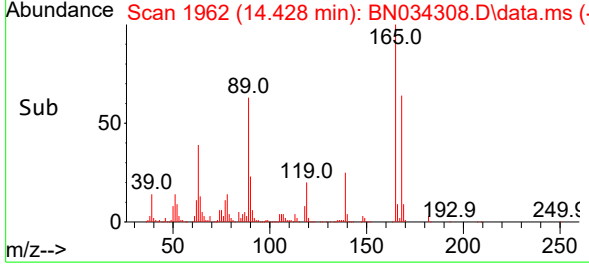
#57
 2,4-Dinitrotoluene
 Concen: 18.449 ng/ul
 RT: 14.428 min Scan# 1961
 Delta R.T. -0.000 min
 Lab File: BN034308.D
 Acq: 01 Oct 2024 18:30

Instrument : BNA_N
 ClientSampleId : SSTD020324

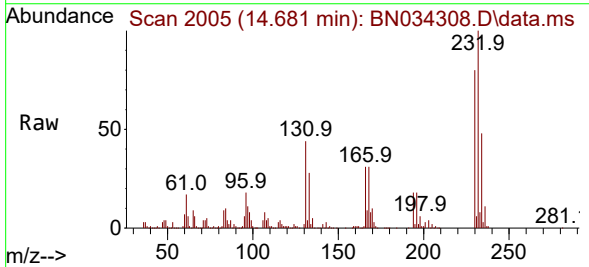


Tgt Ion:165 Resp: 299804

Ion	Ratio	Lower	Upper
165	100		
63	39.5	37.8	56.8
182	3.0	2.3	3.5

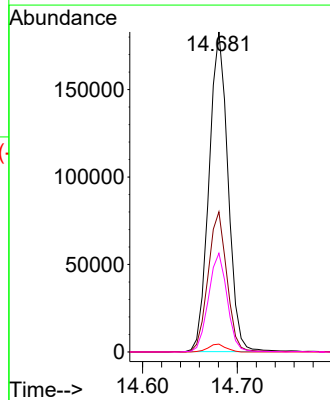
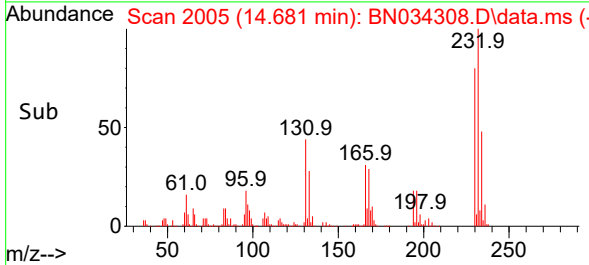


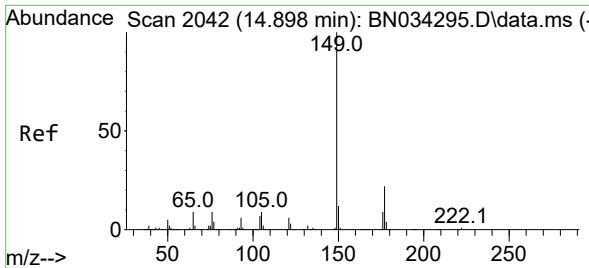
#58
 2,3,4,6-Tetrachlorophenol
 Concen: 20.245 ng/ul
 RT: 14.681 min Scan# 2005
 Delta R.T. -0.000 min
 Lab File: BN034308.D
 Acq: 01 Oct 2024 18:30



Tgt Ion:232 Resp: 253821

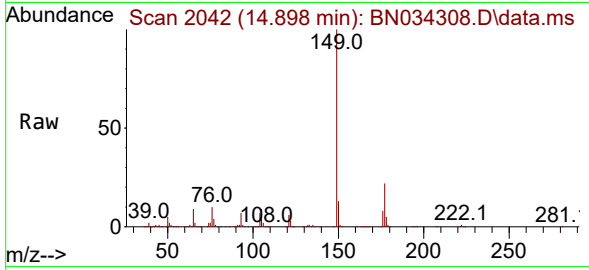
Ion	Ratio	Lower	Upper
232	100		
131	43.8	41.0	61.6
130	2.4	2.2	3.2
166	30.8	27.1	40.7



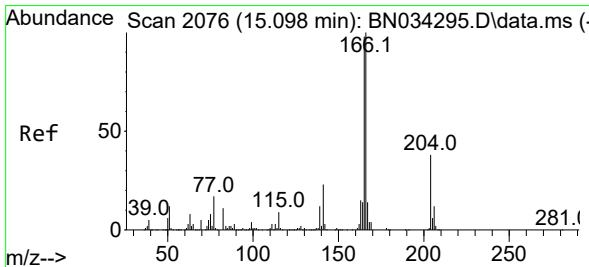
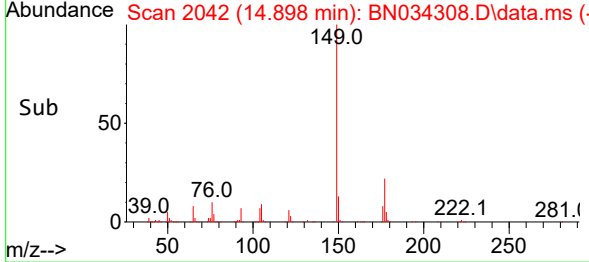
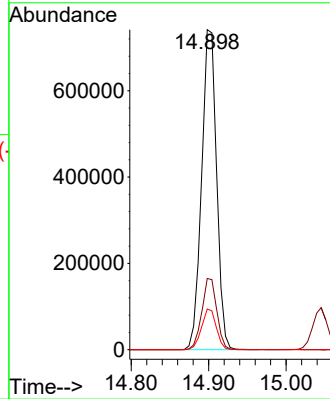


#59
 Diethylphthalate
 Concen: 17.417 ng/ul
 RT: 14.898 min Scan# 2042
 Delta R.T. -0.000 min
 Lab File: BN034308.D
 Acq: 01 Oct 2024 18:30

Instrument :
 BNA_N
 ClientSampleId :
 SSTD020324

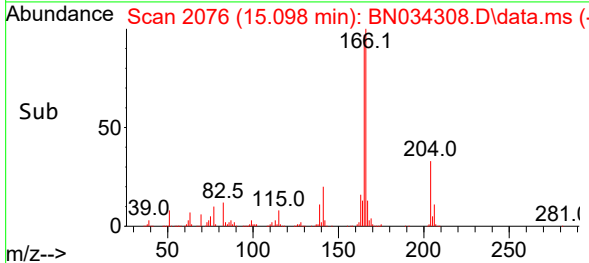
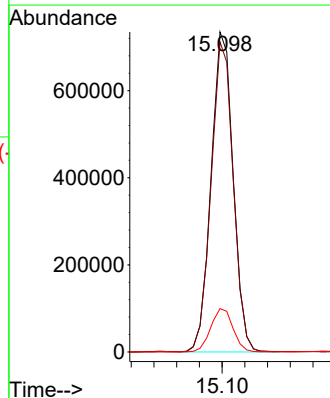
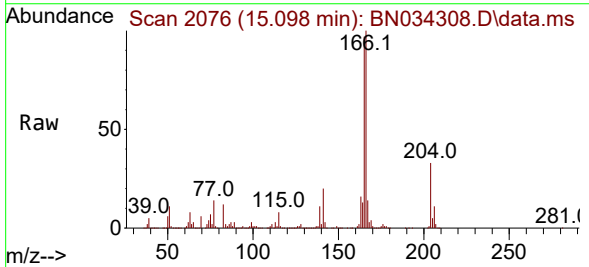


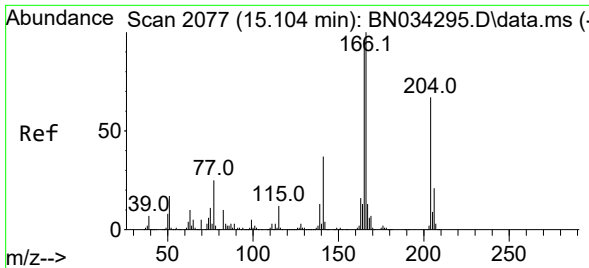
Tgt Ion:149 Resp: 996303
 Ion Ratio Lower Upper
 149 100
 177 22.2 16.9 25.3
 150 12.7 9.9 14.9



#61
 Fluorene
 Concen: 18.765 ng/ul
 RT: 15.098 min Scan# 2076
 Delta R.T. -0.000 min
 Lab File: BN034308.D
 Acq: 01 Oct 2024 18:30

Tgt Ion:166 Resp: 990894
 Ion Ratio Lower Upper
 166 100
 165 96.9 81.9 122.9
 167 13.5 10.9 16.3





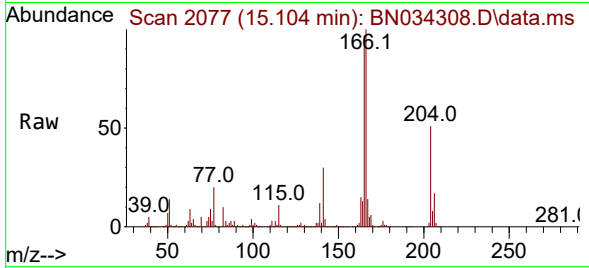
#62
 4-Chlorophenyl-phenylether
 Concen: 19.183 ng/ul
 RT: 15.104 min Scan# 2077
 Delta R.T. -0.000 min
 Lab File: BN034308.D
 Acq: 01 Oct 2024 18:30

Instrument :

BNA_N

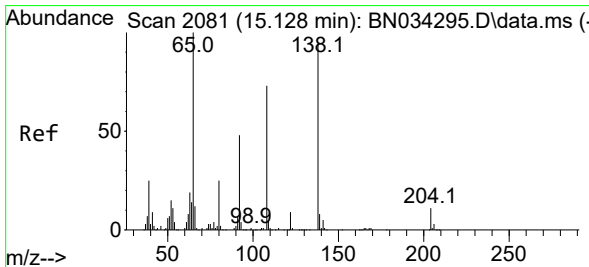
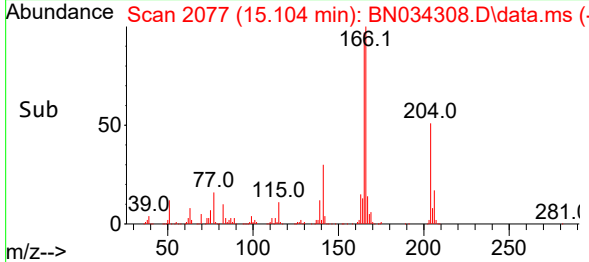
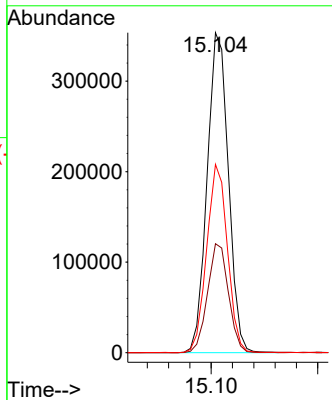
ClientSampleId :

SSTD020324



Tgt Ion:204 Resp: 490981

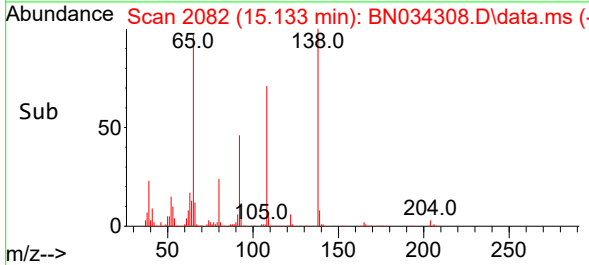
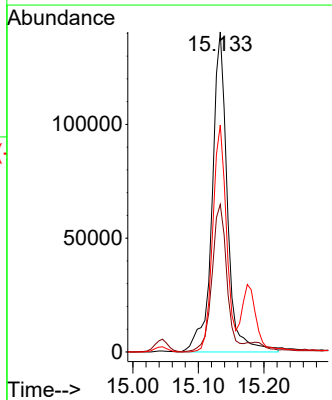
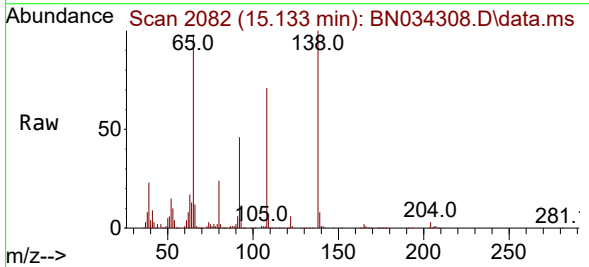
Ion	Ratio	Lower	Upper
204	100		
206	34.0	26.2	39.4
141	58.9	50.4	75.6

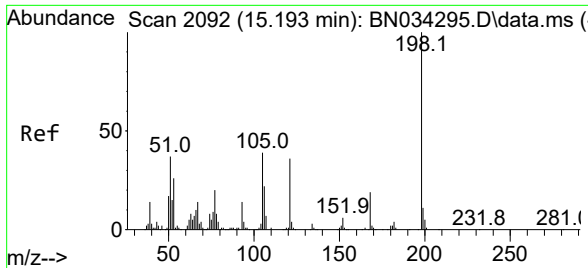


#63
 4-Nitroaniline
 Concen: 18.585 ng/ul
 RT: 15.133 min Scan# 2082
 Delta R.T. -0.000 min
 Lab File: BN034308.D
 Acq: 01 Oct 2024 18:30

Tgt Ion:138 Resp: 227821

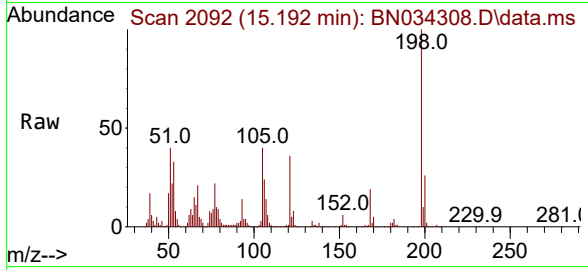
Ion	Ratio	Lower	Upper
138	100		
92	46.1	43.0	64.4
108	70.9	67.0	100.4



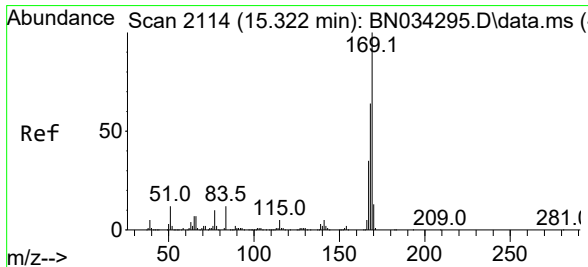
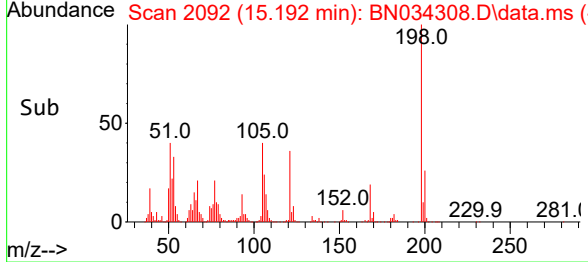
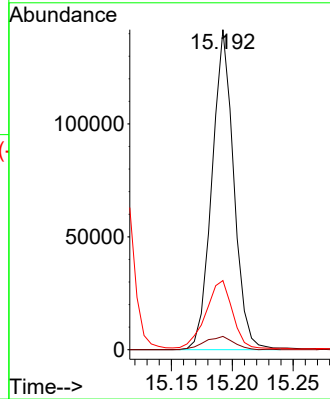


#66
 4,6-Dinitro-2-methylphenol
 Concen: 18.875 ng/ul
 RT: 15.192 min Scan# 2092
 Delta R.T. -0.000 min
 Lab File: BN034308.D
 Acq: 01 Oct 2024 18:30

Instrument :
 BNA_N
 ClientSampleId :
 SSTD020324

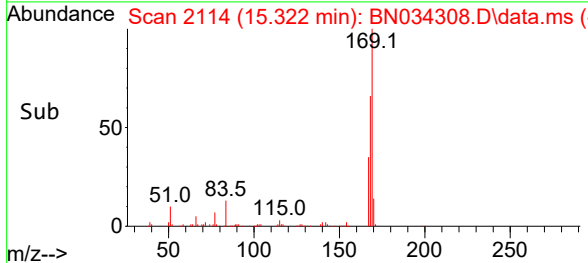
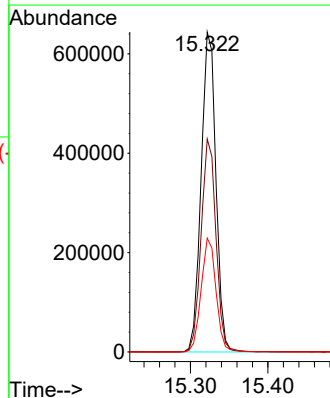
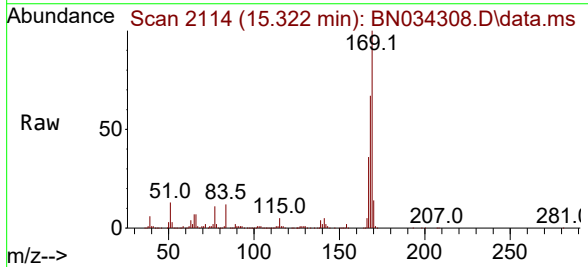


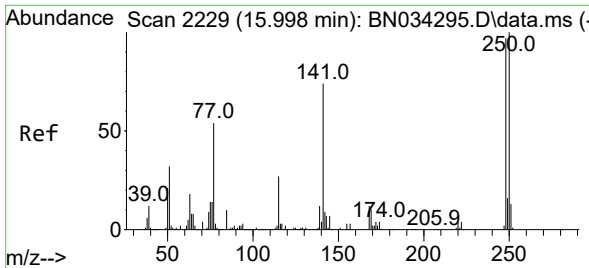
Tgt Ion:198 Resp: 176890
 Ion Ratio Lower Upper
 198 100
 182 4.1 3.2 4.8
 77 21.6 21.1 31.7



#67
 N-Nitrosodiphenylamine
 Concen: 20.132 ng/ul
 RT: 15.322 min Scan# 2114
 Delta R.T. -0.000 min
 Lab File: BN034308.D
 Acq: 01 Oct 2024 18:30

Tgt Ion:169 Resp: 853876
 Ion Ratio Lower Upper
 169 100
 168 66.5 52.8 79.2
 167 35.6 28.6 43.0



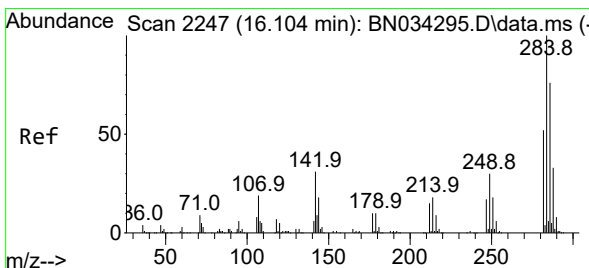
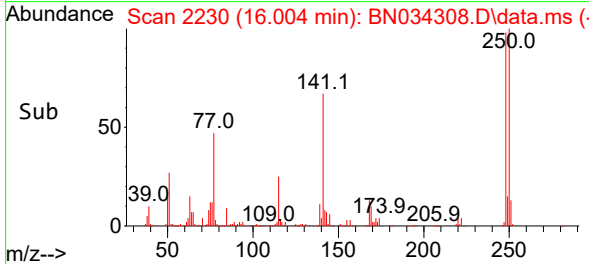
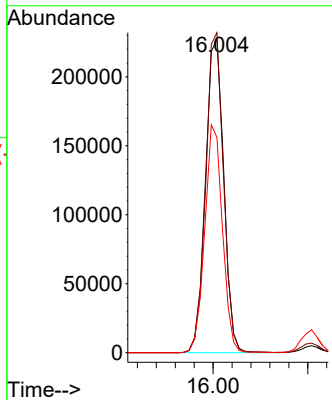
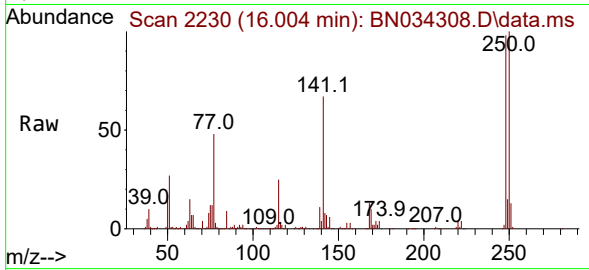


#68
 4-Bromophenyl-phenylether
 Concen: 21.184 ng/ul
 RT: 16.004 min Scan# 21
 Delta R.T. -0.000 min
 Lab File: BN034308.D
 Acq: 01 Oct 2024 18:30

Instrument :
 BNA_N
 ClientSampleId :
 SSTD020324

Tgt Ion:248 Resp: 304480

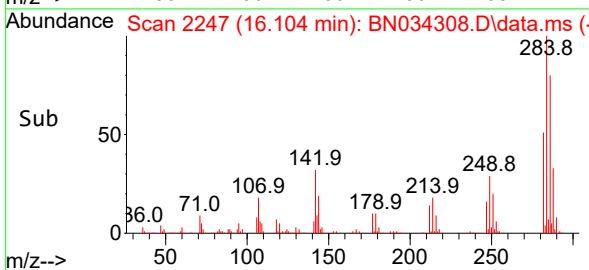
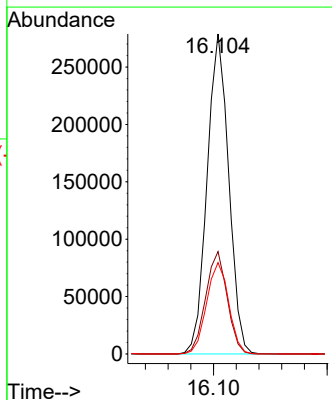
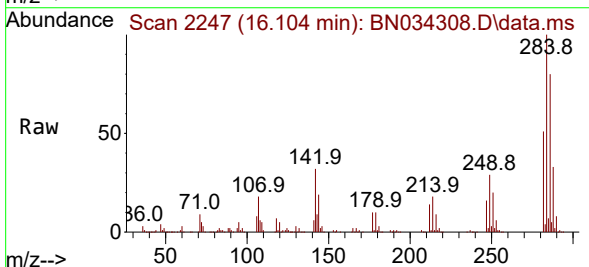
Ion	Ratio	Lower	Upper
248	100		
250	101.9	79.8	119.6
141	68.6	67.0	100.4

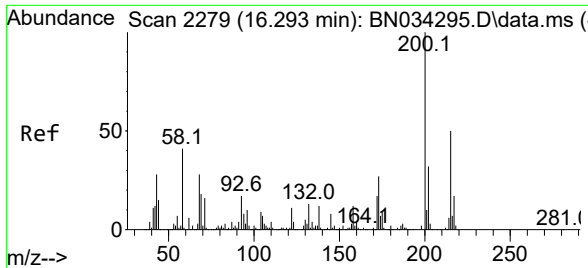


#69
 Hexachlorobenzene
 Concen: 22.033 ng/ul
 RT: 16.104 min Scan# 2247
 Delta R.T. -0.000 min
 Lab File: BN034308.D
 Acq: 01 Oct 2024 18:30

Tgt Ion:284 Resp: 367569

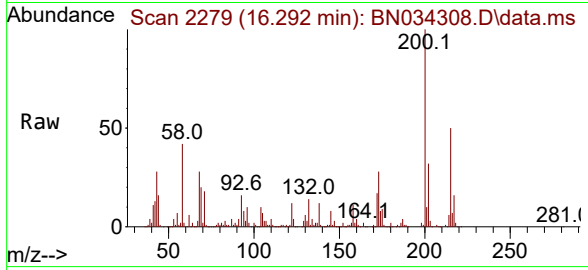
Ion	Ratio	Lower	Upper
284	100		
142	32.0	31.3	46.9
249	28.6	25.1	37.7



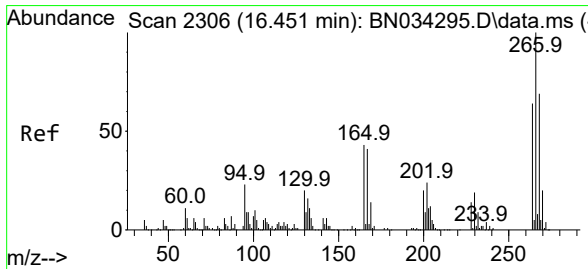
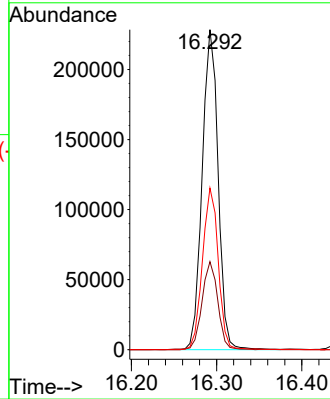
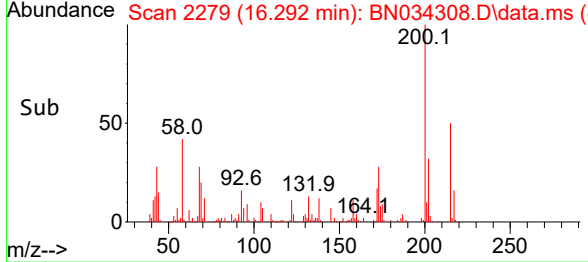


#70
 Atrazine
 Concen: 19.311 ng/ul
 RT: 16.292 min Scan# 21
 Delta R.T. -0.000 min
 Lab File: BN034308.D
 Acq: 01 Oct 2024 18:30

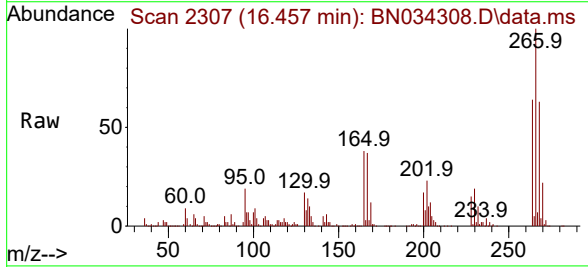
Instrument :
 BNA_N
 ClientSampleId :
 SSTD020324



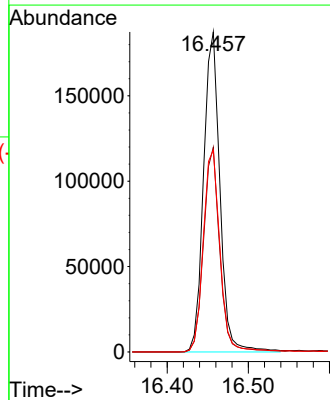
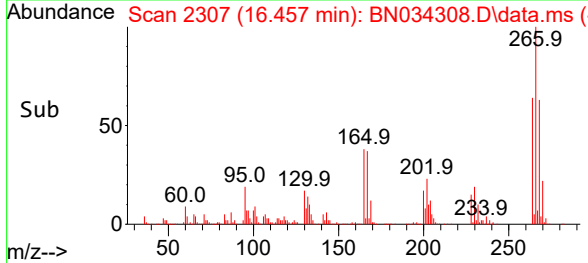
Tgt Ion:200 Resp: 296766
 Ion Ratio Lower Upper
 200 100
 173 27.5 21.3 31.9
 215 50.5 38.2 57.4

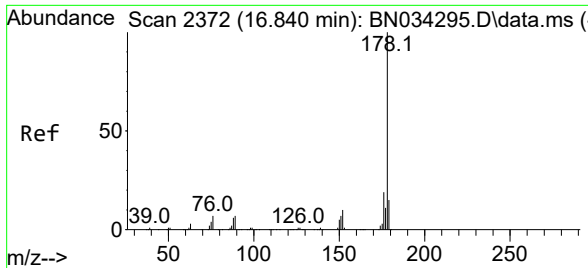


#71
 Pentachlorophenol
 Concen: 23.549 ng/ul
 RT: 16.457 min Scan# 2307
 Delta R.T. -0.000 min
 Lab File: BN034308.D
 Acq: 01 Oct 2024 18:30



Tgt Ion:266 Resp: 261656
 Ion Ratio Lower Upper
 266 100
 264 63.9 51.1 76.7
 268 63.1 52.8 79.2



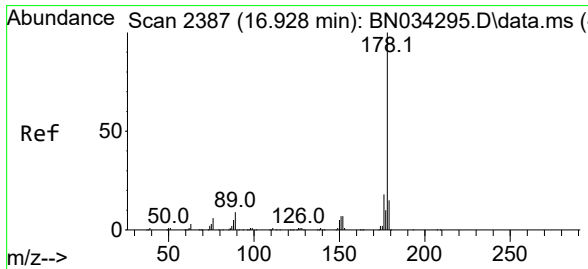
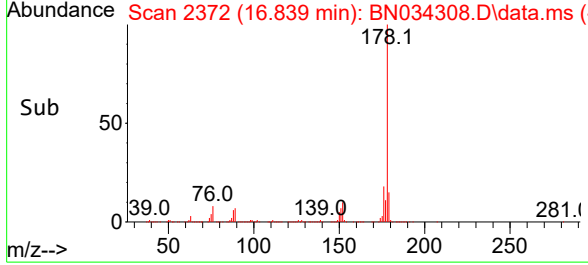
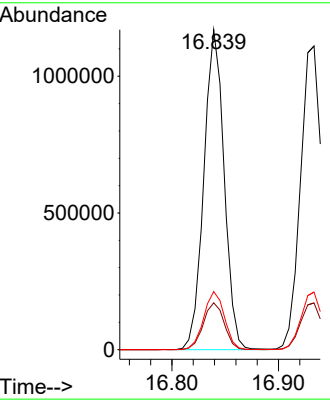
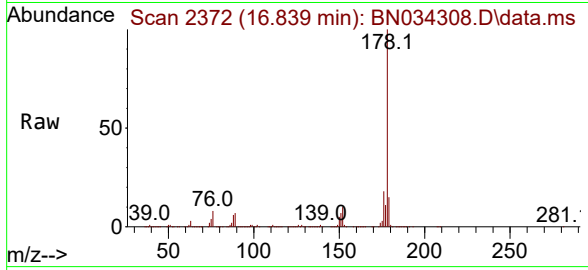


#72
 Phenanthrene
 Concen: 19.825 ng/u1
 RT: 16.839 min Scan# 21
 Delta R.T. -0.000 min
 Lab File: BN034308.D
 Acq: 01 Oct 2024 18:30

Instrument : BNA_N
 ClientSampleId : SSTD020324

Tgt Ion:178 Resp: 1547327

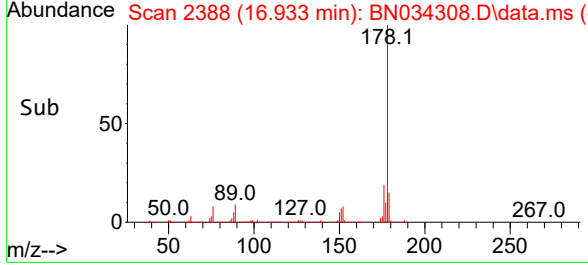
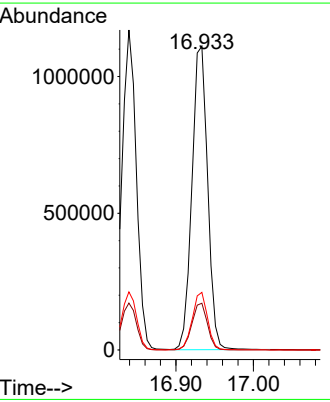
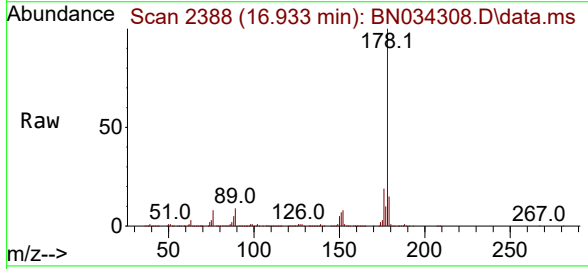
Ion	Ratio	Lower	Upper
178	100		
179	14.7	11.9	17.9
176	18.1	15.2	22.8

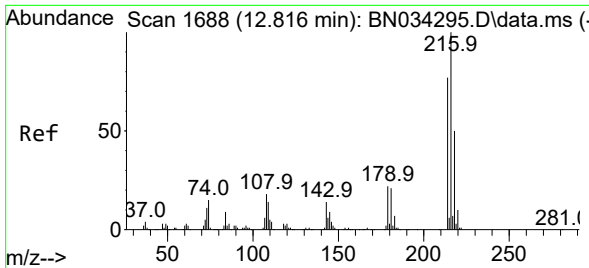


#74
 Anthracene
 Concen: 19.633 ng/u1
 RT: 16.933 min Scan# 2388
 Delta R.T. -0.000 min
 Lab File: BN034308.D
 Acq: 01 Oct 2024 18:30

Tgt Ion:178 Resp: 1564641

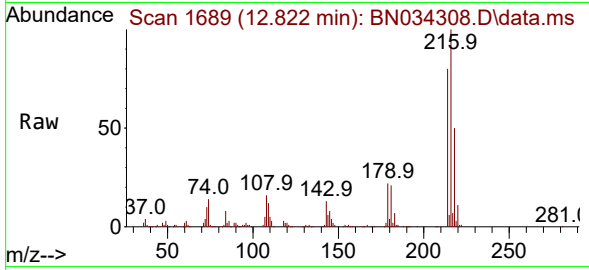
Ion	Ratio	Lower	Upper
178	100		
179	15.4	12.2	18.2
176	19.0	15.0	22.6



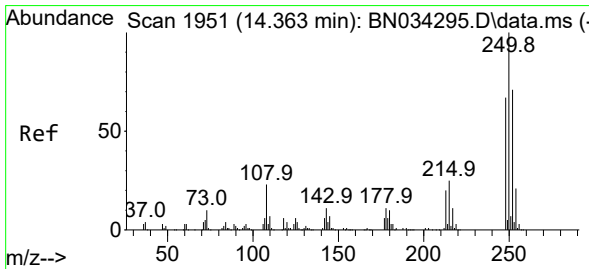
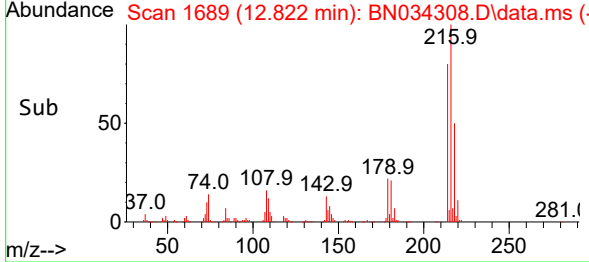
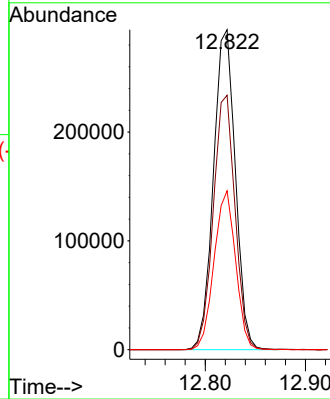


#75
 1,2,3,4-Tetrachlorobenzene
 Concen: 22.656 ng/uL
 RT: 12.822 min Scan# 1689
 Delta R.T. -0.000 min
 Lab File: BN034308.D
 Acq: 01 Oct 2024 18:30

Instrument : BNA_N
 ClientSampleId : BN034308.D
 SSTD020324

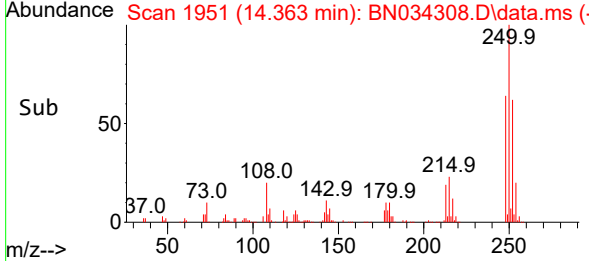
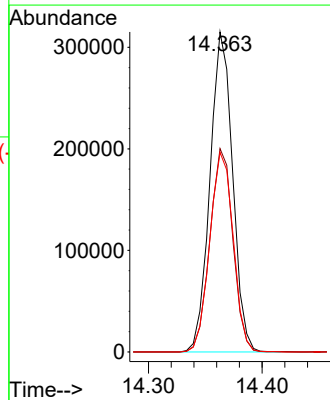
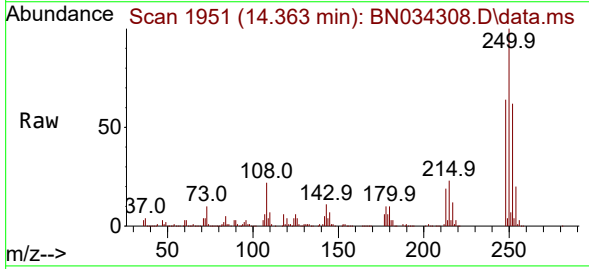


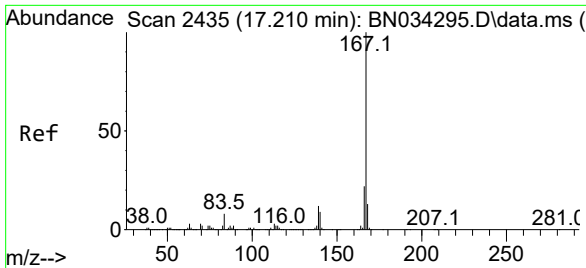
Tgt Ion:216 Resp: 446303
 Ion Ratio Lower Upper
 216 100
 214 79.5 63.6 95.4
 218 49.7 37.6 56.4



#76
 Pentachlorobenzene
 Concen: 21.716 ng/uL
 RT: 14.363 min Scan# 1951
 Delta R.T. -0.000 min
 Lab File: BN034308.D
 Acq: 01 Oct 2024 18:30

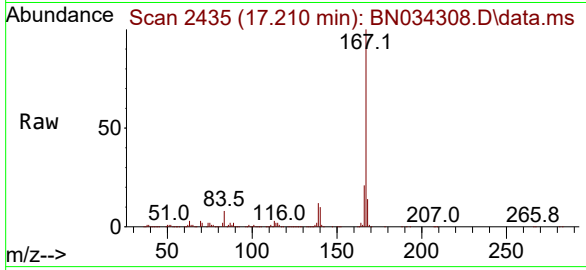
Tgt Ion:250 Resp: 435572
 Ion Ratio Lower Upper
 250 100
 248 63.5 49.3 73.9
 252 62.4 49.1 73.7





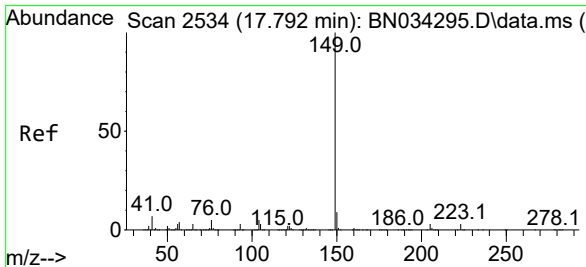
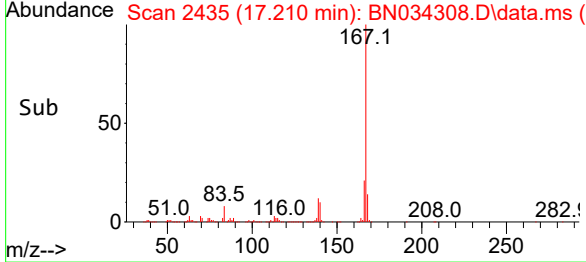
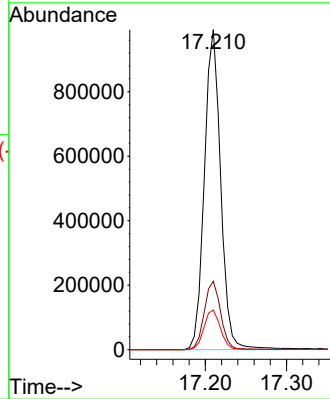
#77
 Carbazole
 Concen: 18.863 ng/uI
 RT: 17.210 min Scan# 2435
 Delta R.T. -0.000 min
 Lab File: BN034308.D
 Acq: 01 Oct 2024 18:30

Instrument :
 BNA_N
 ClientSampleId :
 SSTD020324



Tgt Ion:167 Resp: 1383582

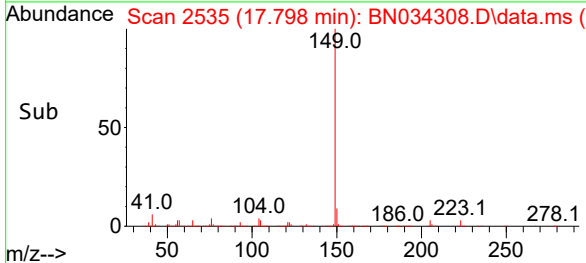
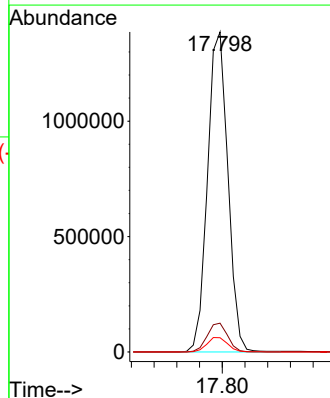
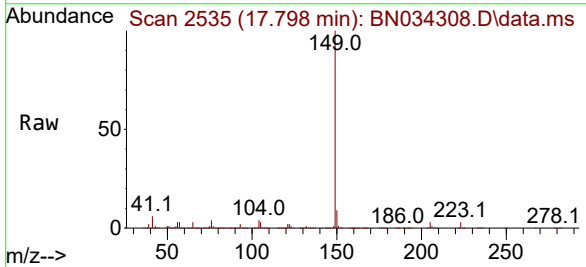
Ion	Ratio	Lower	Upper
167	100		
166	21.4	17.4	26.0
139	12.4	10.5	15.7

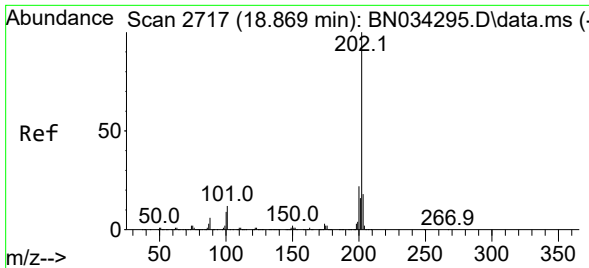


#78
 Di-n-butylphthalate
 Concen: 18.486 ng/uI
 RT: 17.798 min Scan# 2535
 Delta R.T. -0.000 min
 Lab File: BN034308.D
 Acq: 01 Oct 2024 18:30

Tgt Ion:149 Resp: 1723696

Ion	Ratio	Lower	Upper
149	100		
150	9.0	7.4	11.2
104	4.4	4.3	6.5



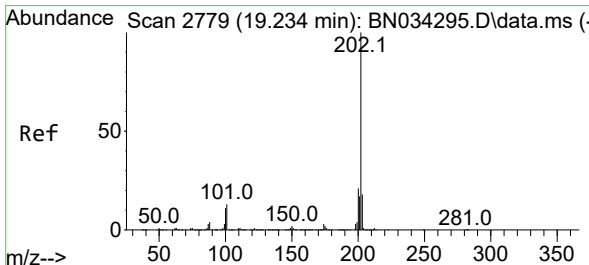
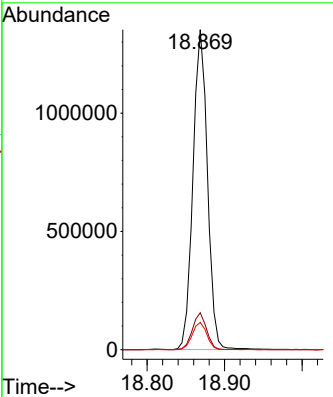
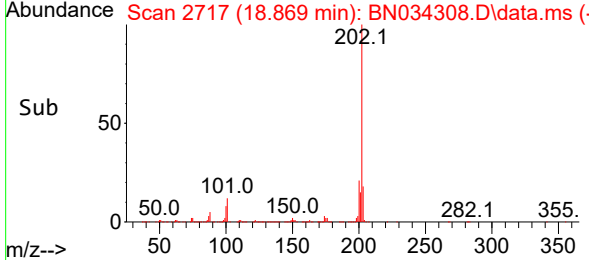
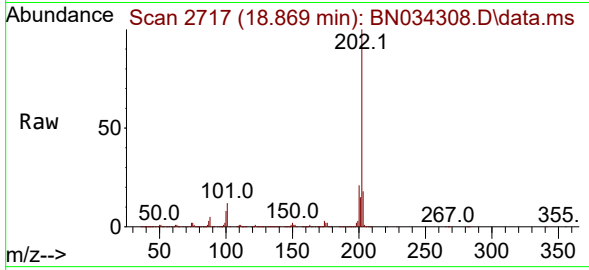


#80
 Fluoranthene
 Concen: 19.461 ng/u1
 RT: 18.869 min Scan# 2717
 Delta R.T. -0.000 min
 Lab File: BN034308.D
 Acq: 01 Oct 2024 18:30

Instrument : BNA_N
 ClientSampleId : SSTD020324

Tgt Ion:202 Resp: 1753842

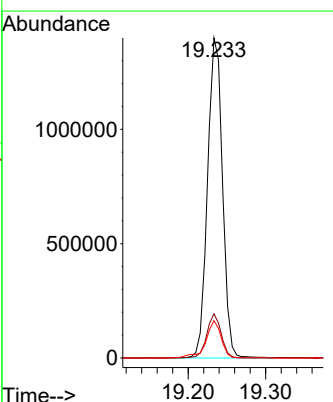
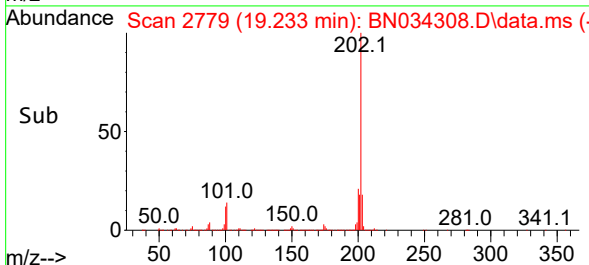
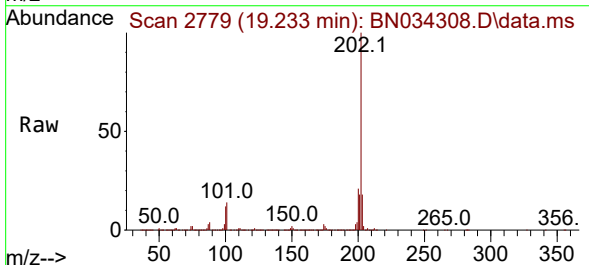
Ion	Ratio	Lower	Upper
202	100		
101	11.5	9.6	14.4
100	8.5	7.7	11.5

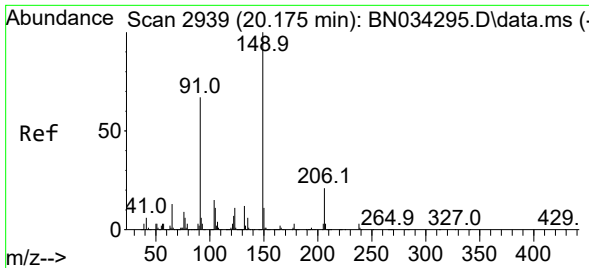


#82
 Pyrene
 Concen: 19.344 ng/u1
 RT: 19.233 min Scan# 2779
 Delta R.T. -0.006 min
 Lab File: BN034308.D
 Acq: 01 Oct 2024 18:30

Tgt Ion:202 Resp: 1874154

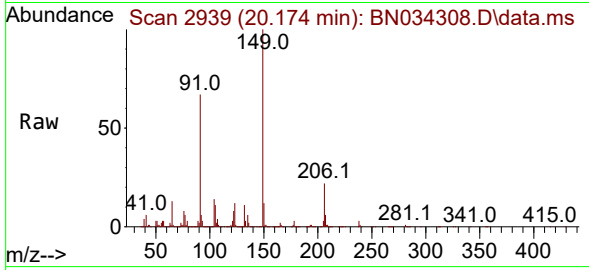
Ion	Ratio	Lower	Upper
202	100		
101	13.8	11.8	17.8
100	11.7	10.0	15.0



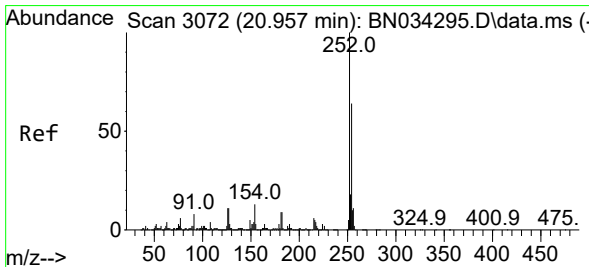
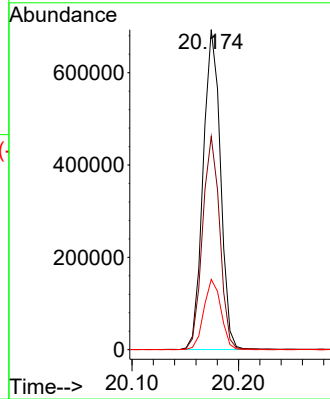
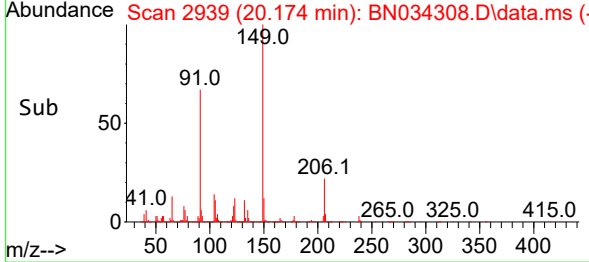


#83
 Butylbenzylphthalate
 Concen: 18.081 ng/ul
 RT: 20.174 min Scan# 2939
 Delta R.T. -0.006 min
 Lab File: BN034308.D
 Acq: 01 Oct 2024 18:30

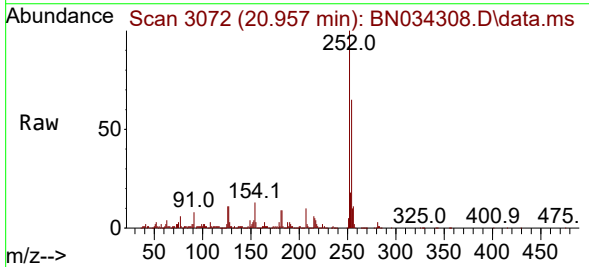
Instrument :
 BNA_N
 ClientSampleId :
 SSTD020324



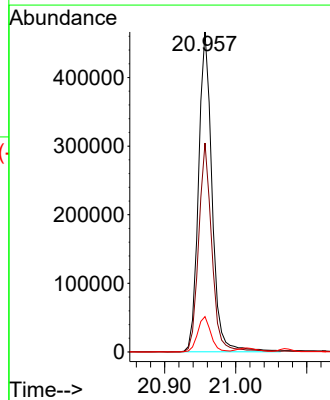
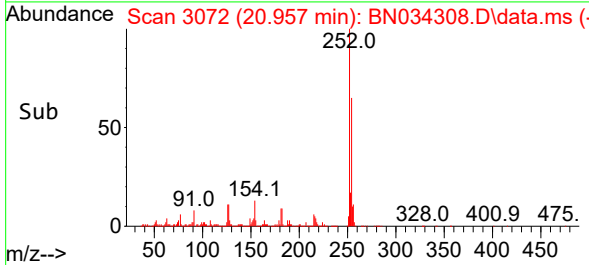
Tgt Ion:149 Resp: 785595
 Ion Ratio Lower Upper
 149 100
 91 66.6 56.3 84.5
 206 22.0 15.9 23.9

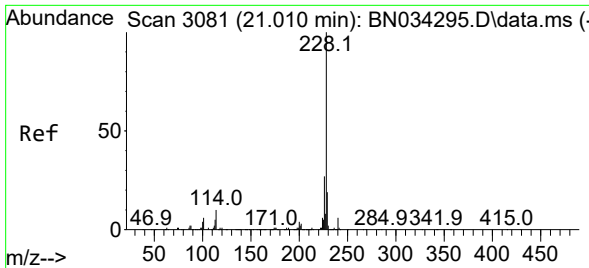


#84
 3,3'-Dichlorobenzidine
 Concen: 19.924 ng/ul
 RT: 20.957 min Scan# 3072
 Delta R.T. -0.000 min
 Lab File: BN034308.D
 Acq: 01 Oct 2024 18:30



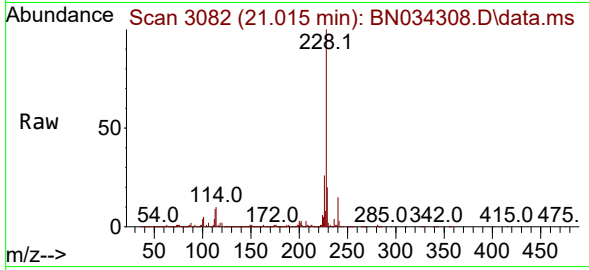
Tgt Ion:252 Resp: 619214
 Ion Ratio Lower Upper
 252 100
 254 65.3 52.0 78.0
 126 11.0 9.7 14.5





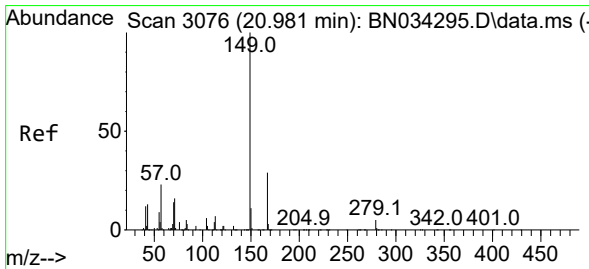
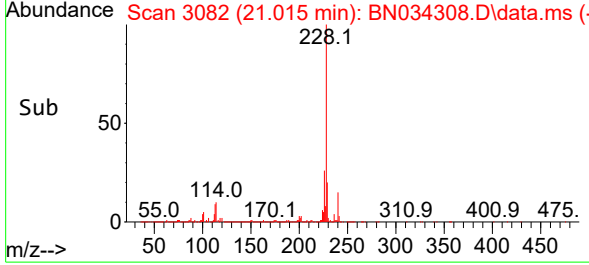
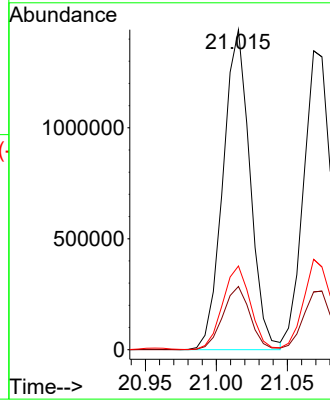
#85
 Benzo(a)anthracene
 Concen: 19.368 ng/ul
 RT: 21.015 min Scan# 3081
 Delta R.T. -0.000 min
 Lab File: BN034308.D
 Acq: 01 Oct 2024 18:30

Instrument : BNA_N
 ClientSampleId : SSTD020324



Tgt Ion:228 Resp: 1910660

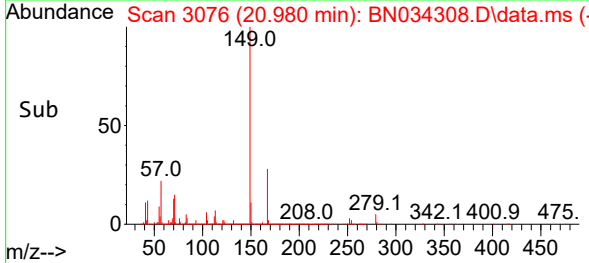
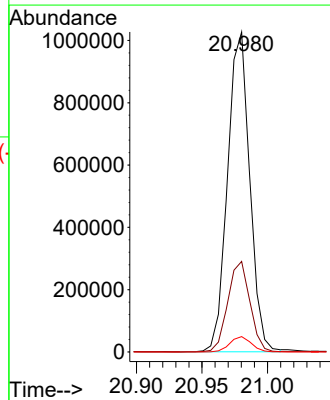
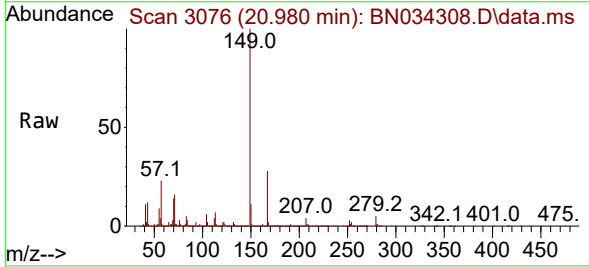
Ion	Ratio	Lower	Upper
228	100		
229	19.8	15.0	22.6
226	26.1	20.2	30.4

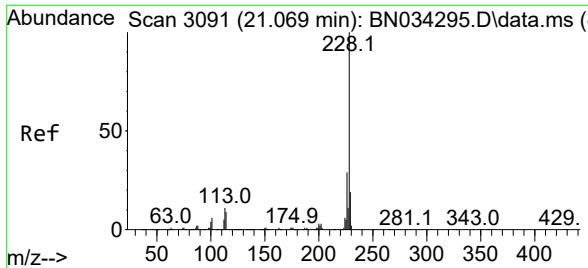


#86
 Bis(2-ethylhexyl)phthalate
 Concen: 18.955 ng/ul
 RT: 20.980 min Scan# 3076
 Delta R.T. -0.000 min
 Lab File: BN034308.D
 Acq: 01 Oct 2024 18:30

Tgt Ion:149 Resp: 1205462

Ion	Ratio	Lower	Upper
149	100		
167	28.3	20.6	31.0
279	4.8	3.0	4.6



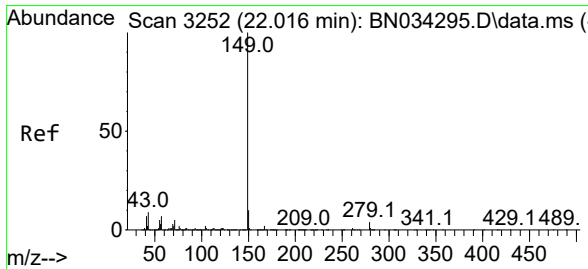
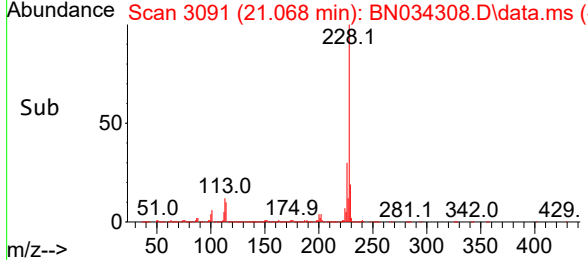
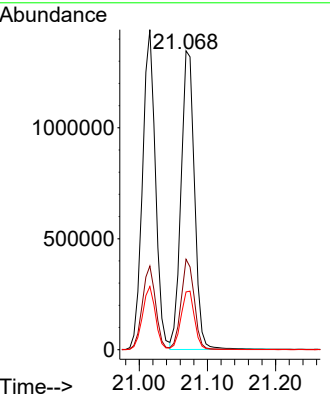
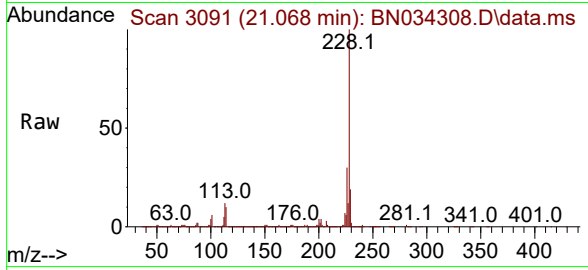


#87
 Chrysene
 Concen: 19.497 ng/ul
 RT: 21.068 min Scan# 3091
 Delta R.T. -0.006 min
 Lab File: BN034308.D
 Acq: 01 Oct 2024 18:30

Instrument : BNA_N
 Client Sample Id : SSTD020324

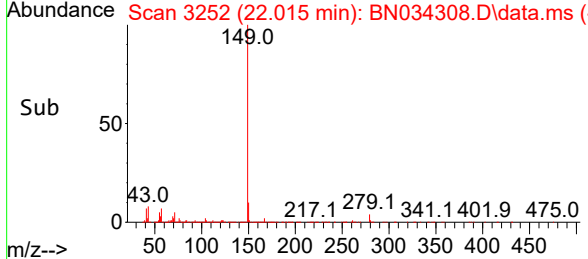
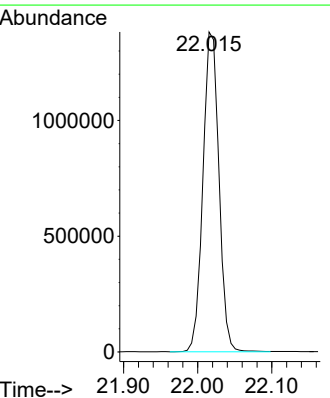
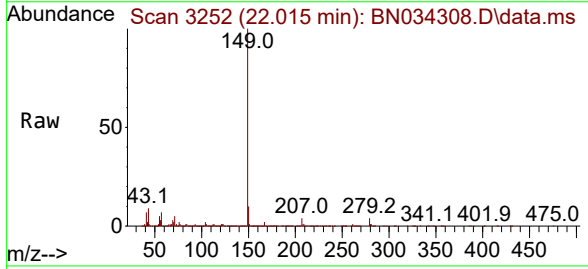
Tgt Ion: 228 Resp: 1835154

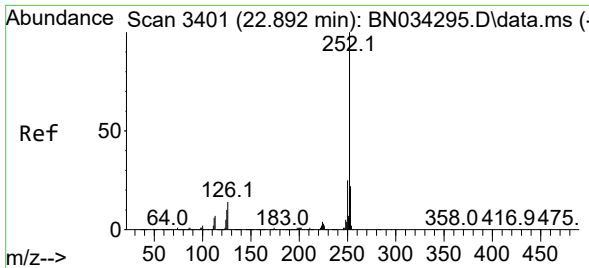
Ion	Ratio	Lower	Upper
228	100		
226	30.3	22.5	33.7
229	19.3	15.8	23.6



#89
 Di-n-octyl phthalate
 Concen: 18.387 ng/ul
 RT: 22.015 min Scan# 3252
 Delta R.T. -0.006 min
 Lab File: BN034308.D
 Acq: 01 Oct 2024 18:30

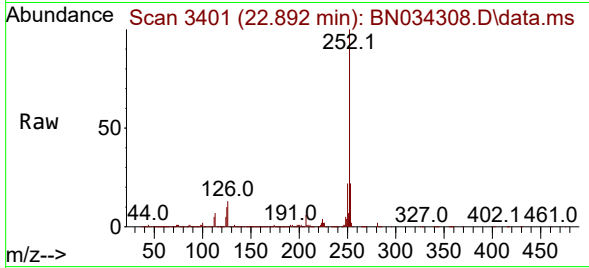
Tgt Ion: 149 Resp: 2068885



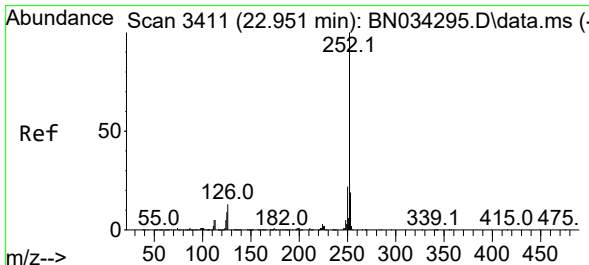
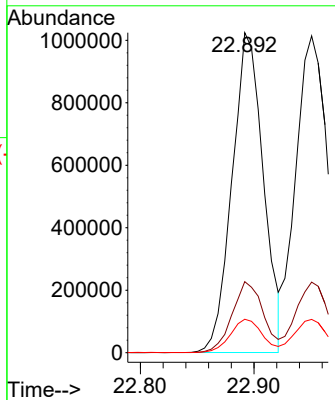
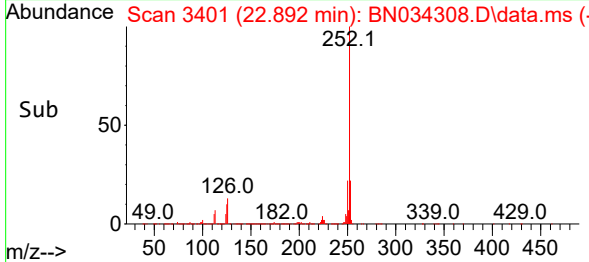


#90
 Benzo(b)fluoranthene
 Concen: 19.005 ng/ul
 RT: 22.892 min Scan# 3401
 Delta R.T. -0.000 min
 Lab File: BN034308.D
 Acq: 01 Oct 2024 18:30

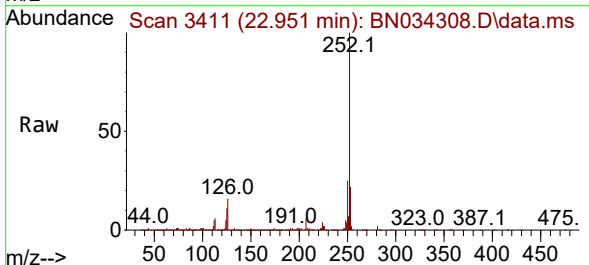
Instrument :
 BNA_N
 ClientSampleId :
 SSTD020324



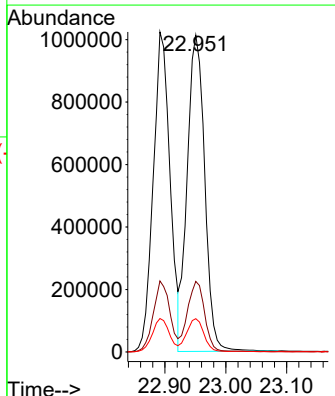
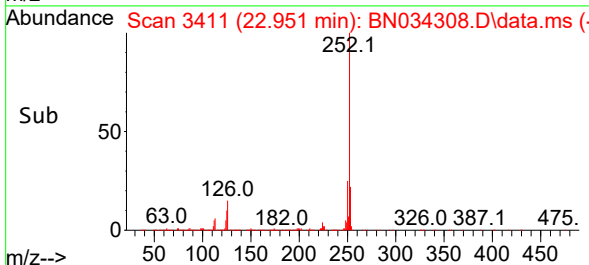
Tgt Ion:252 Resp: 1959401
 Ion Ratio Lower Upper
 252 100
 253 22.2 17.8 26.6
 125 10.4 9.1 13.7

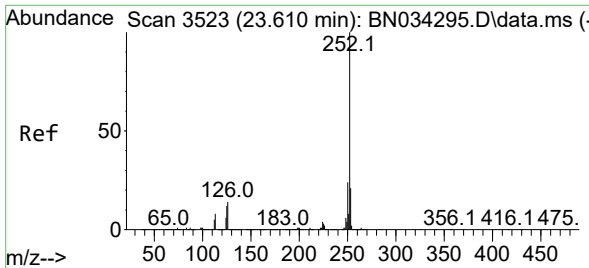


#91
 Benzo(k)fluoranthene
 Concen: 19.848 ng/ul
 RT: 22.951 min Scan# 3411
 Delta R.T. 0.006 min
 Lab File: BN034308.D
 Acq: 01 Oct 2024 18:30



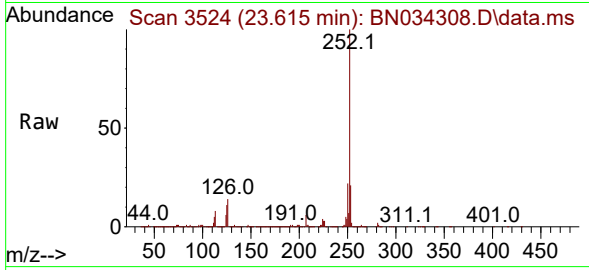
Tgt Ion:252 Resp: 2018703
 Ion Ratio Lower Upper
 252 100
 253 22.3 17.4 26.0
 125 10.5 8.8 13.2



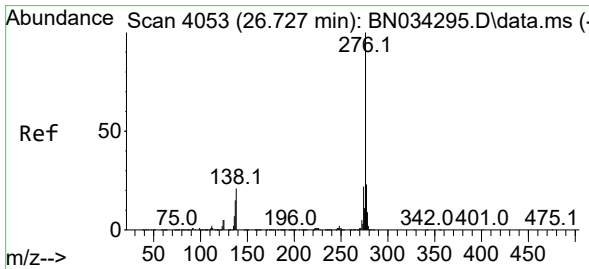
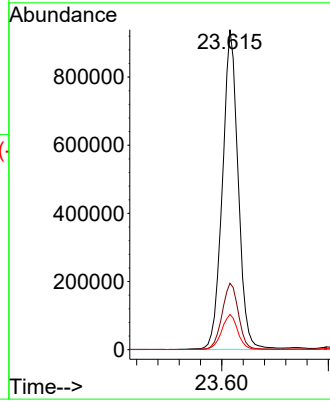
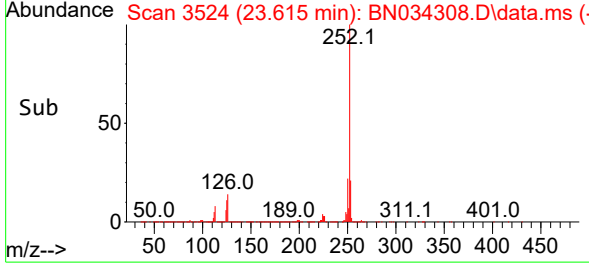


#93
 Benzo(a)pyrene
 Concen: 19.740 ng/u1
 RT: 23.615 min Scan# 31
 Delta R.T. -0.000 min
 Lab File: BN034308.D
 Acq: 01 Oct 2024 18:30

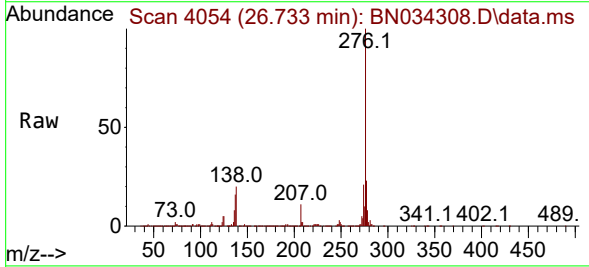
Instrument : BNA_N
 ClientSampleId : SSTD020324



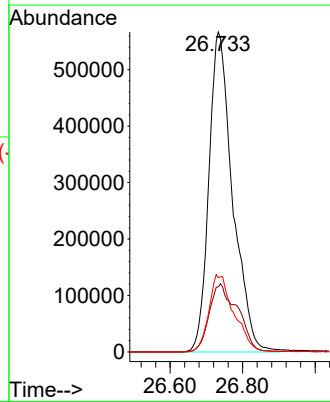
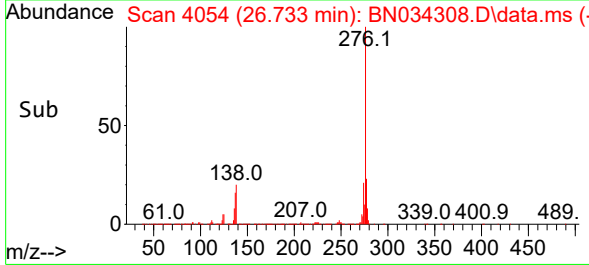
Tgt Ion:252 Resp: 1922594
 Ion Ratio Lower Upper
 252 100
 253 20.8 15.8 23.8
 125 11.0 9.0 13.6

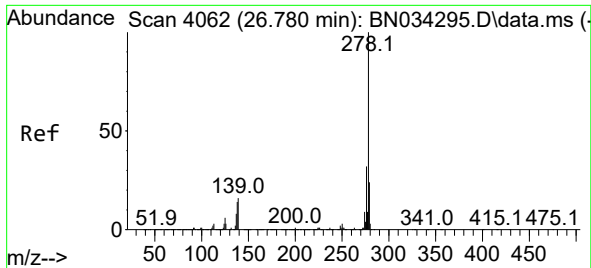


#94
 Indeno(1,2,3-cd)pyrene
 Concen: 21.364 ng/u1
 RT: 26.733 min Scan# 4054
 Delta R.T. -0.006 min
 Lab File: BN034308.D
 Acq: 01 Oct 2024 18:30



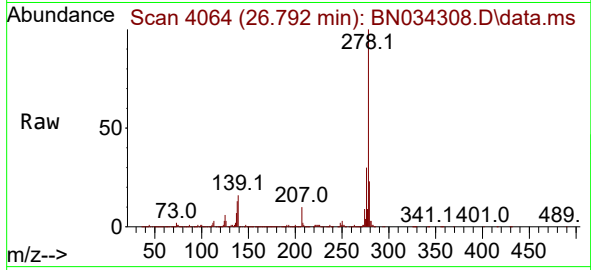
Tgt Ion:276 Resp: 2578186
 Ion Ratio Lower Upper
 276 100
 138 20.4 17.7 26.5
 277 23.2 18.4 27.6



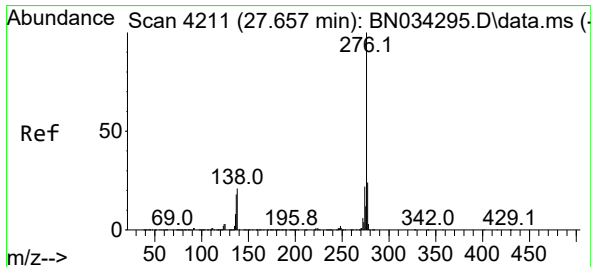
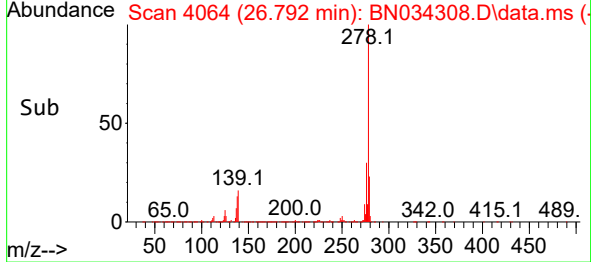
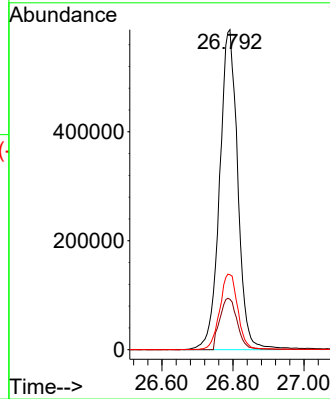


#95
 Dibenzo(a,h)anthracene
 Concen: 21.250 ng/ul
 RT: 26.792 min Scan# 4064
 Delta R.T. -0.000 min
 Lab File: BN034308.D
 Acq: 01 Oct 2024 18:30

Instrument : BNA_N
 ClientSampleId : SSTD020324



Tgt Ion:278 Resp: 2072836
 Ion Ratio Lower Upper
 278 100
 139 15.8 14.2 21.2
 279 23.4 18.1 27.1



#96
 Benzo(g,h,i)perylene
 Concen: 21.375 ng/ul
 RT: 27.668 min Scan# 4213
 Delta R.T. 0.006 min
 Lab File: BN034308.D
 Acq: 01 Oct 2024 18:30

Tgt Ion:276 Resp: 2002478
 Ion Ratio Lower Upper
 276 100
 138 22.3 19.0 28.4
 277 22.7 18.0 27.0

