

Data Path : Z:\svoasrv\HPCHEM1\BNA_N\Data\BN100124\
 Data File : BN034313.D
 Acq On : 01 Oct 2024 22:27
 Operator : RC/JU
 Sample : P4019-04
 Misc :
 ALS Vial : 21 Sample Multiplier: 1

Instrument :
 BNA_N
 ClientSampleId :
 DDC68

Quant Time: Oct 01 23:36:10 2024
 Quant Method : Z:\svoasrv\HPCHEM1\BNA_N\Methods\SFAM-EPA-BN091124.MA.M
 Quant Title : SVOA CALIBRATION
 QLast Update : Mon Sep 30 14:14:38 2024
 Response via : Initial Calibration

Compound	R.T.	QIon	Response	Conc	Units	Dev(Min)
Internal Standards						
1) 1,4-Dichlorobenzene-d4	7.393	152	204455	20.000	ng/ul	0.00
20) Naphthalene-d8	10.152	136	797424	20.000	ng/ul	# 0.01
38) Acenaphthene-d10	14.045	164	549824	20.000	ng/ul	0.00
64) Phenanthrene-d10	16.804	188	1079902	20.000	ng/ul	0.00
79) Chrysene-d12	21.033	240	1081858	20.000	ng/ul	0.00
88) Perylene-d12	23.751	264	1326001	20.000	ng/ul	0.01
System Monitoring Compounds						
3) 1,4-Dioxane-d8	3.011	96	15880	3.169	ng/uL	0.01
4) Pyridine-d5	3.399	84	204800	13.752	ng/ul	0.01
7) Phenol-d5	6.599	99	298862	16.470	ng/ul	0.02
9) Bis-(2-Chloroethyl)eth...	6.746	67	234654	20.843	ng/ul	0.00
11) 2-Chlorophenol-d4	6.940	132	227301	15.914	ng/ul	0.01
15) 4-Methylphenol-d8	8.116	113	223519	14.971	ng/ul	0.01
21) Nitrobenzene-d5	8.540	128	129057	20.305	ng/ul	0.01
24) 2-Nitrophenol-d4	9.252	143	104556	15.997	ng/ul	0.01
28) 2,4-Dichlorophenol-d3	9.805	165	206240	16.755	ng/ul	0.03
31) 4-Chloroaniline-d4	10.304	131	243998	13.094	ng/ul	0.01
46) Dimethylphthalate-d6	13.469	166	686851	16.716	ng/ul	0.00
49) Acenaphthylene-d8	13.734	160	811802	17.562	ng/ul	0.00
54) 4-Nitrophenol-d4	14.293	143	91161	10.810	ng/ul	0.02
60) Fluorene-d10	15.051	176	616251	17.696	ng/ul	0.00
65) 4,6-Dinitro-2-methylph...	15.187	200	27961	4.343	ng/ul	0.01
73) Anthracene-d10	16.904	188	940320	18.521	ng/ul	0.00
81) Pyrene-d10	19.210	212	1099055	18.233	ng/ul	0.00
92) Benzo(a)pyrene-d12	23.563	264	1233697	18.112	ng/ul	0.00
Target Compounds						
6) Benzaldehyde	6.564	77	262571	27.413	ng/ul#	1
16) Acetophenone	8.346	105	383613	16.219	ng/ul	91
17) N-Nitroso-di-n-propyla...	8.210	70	41070	3.507	ng/ul#	72
19) Hexachloroethane	8.493	117	379087	61.403	ng/ul#	11
22) Nitrobenzene	8.581	77	60491	3.802	ng/ul#	43
23) Isophorone	9.099	82	247034	8.421	ng/ul#	20
25) 2-Nitrophenol	9.299	139	12654	1.730	ng/ul#	1
26) 2,4-Dimethylphenol	9.369	107	84691	5.628	ng/ul#	65
29) 2,4-Dichlorophenol	9.828	162	22265	1.786	ng/ul#	81
30) Naphthalene	10.199	128	1543660	35.390	ng/ul	97
34) Caprolactam	11.093	113	36335	7.322	ng/ul#	1
35) 4-Chloro-3-methylphenol	11.481	107	17199	1.172	ng/ul#	34
36) 2-Methylnaphthalene	11.828	142	2573408	85.651	ng/ul	100
37) 1-Methylnaphthalene	12.051	142	1575472	51.803	ng/ul	97
41) 2,4,6-Trichlorophenol	12.469	196	11902	1.131	ng/ul	99
43) 1,1'-Biphenyl	12.869	154	319287	7.703	ng/ul	93
45) 2-Nitroaniline	13.098	65	16291	1.561	ng/ul#	41
48) 2,6-Dinitrotoluene	13.610	165	24497	2.971	ng/ul#	51
50) Acenaphthylene	13.769	152	61086	1.208	ng/ul#	1
52) Acenaphthene	14.110	153	63085	1.747	ng/ul#	85
53) 2,4-Dinitrophenol	14.157	184	9682	1.996	ng/ul#	1
55) 4-Nitrophenol	14.275	109	29254	4.085	ng/ul#	51
56) Dibenzofuran	14.457	168	157781	3.195	ng/ul#	57
57) 2,4-Dinitrotoluene	14.434	165	13776	1.108	ng/ul#	79

Data Path : Z:\svoasrv\HPCHEM1\BNA_N\Data\BN100124\
 Data File : BN034313.D
 Acq On : 01 Oct 2024 22:27
 Operator : RC/JU
 Sample : P4019-04
 Misc :
 ALS Vial : 21 Sample Multiplier: 1

Instrument :
 BNA_N
 ClientSampleId :
 DDC68

Quant Time: Oct 01 23:36:10 2024
 Quant Method : Z:\svoasrv\HPCHEM1\BNA_N\Methods\SFAM-EPA-BN091124.MA.M
 Quant Title : SVOA CALIBRATION
 QLast Update : Mon Sep 30 14:14:38 2024
 Response via : Initial Calibration

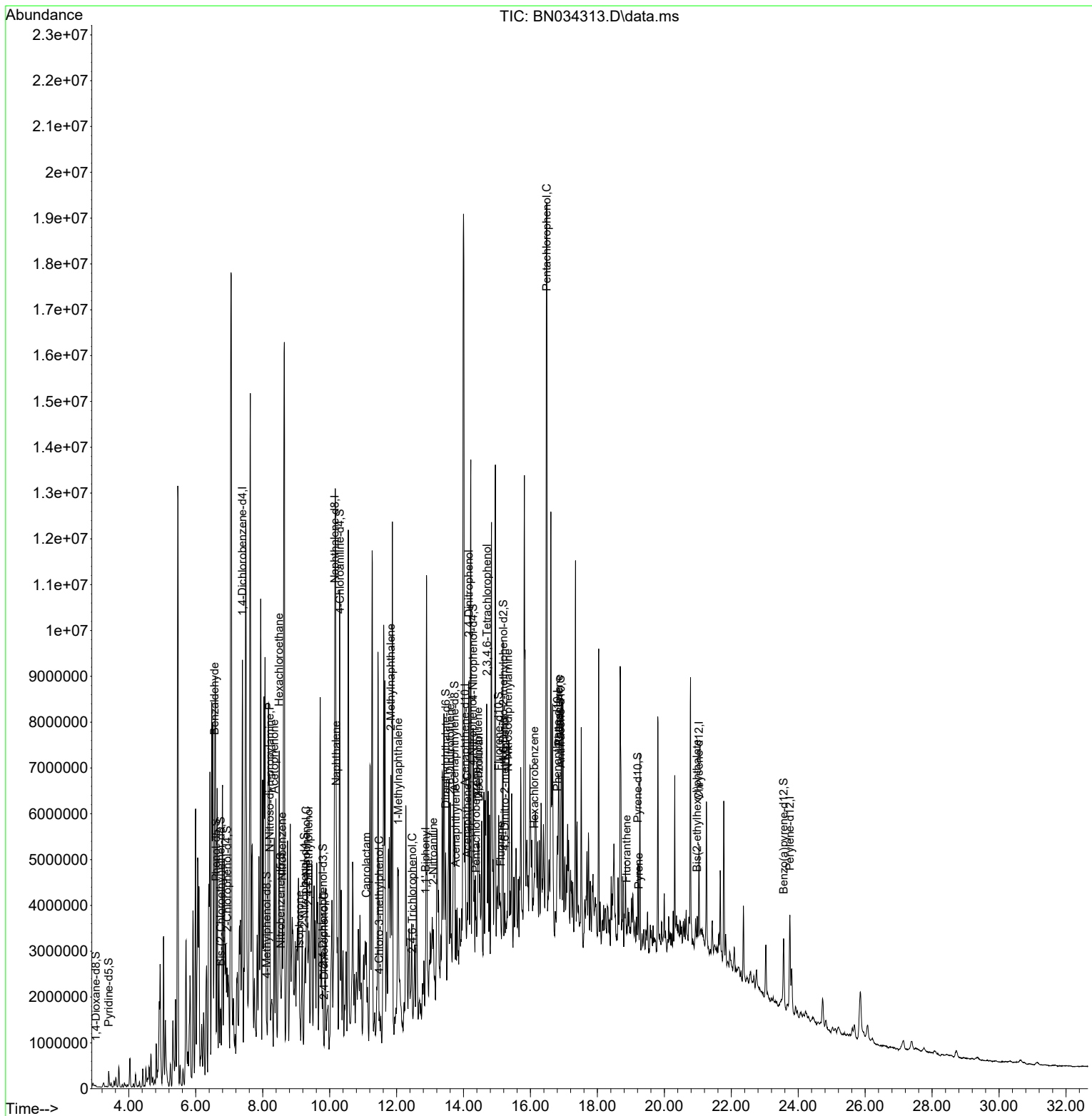
Compound	R.T.	QIon	Response	Conc	Units	Dev(Min)
58) 2,3,4,6-Tetrachlorophenol	14.698	232	724460	75.532	ng/ul#	93
61) Fluorene	15.110	166	232362	5.752	ng/ul#	93
66) 4,6-Dinitro-2-methylph...	15.234	198	24568	3.436	ng/ul#	1
67) N-Nitrosodiphenylamine	15.334	169	288191	8.906	ng/ul#	40
69) Hexachlorobenzene	16.116	284	25509	2.004	ng/ul#	20
71) Pentachlorophenol	16.487	266	4416377	520.978	ng/ul	98
72) Phenanthrene	16.851	178	1141257	19.166	ng/ul#	95
74) Anthracene	16.851	178	1141257	18.770	ng/ul	95
76) Pentachlorobenzene	14.375	250	16908	1.105	ng/uL	95
80) Fluoranthene	18.875	202	125677	1.783	ng/ul#	82
82) Pyrene	19.239	202	131134	1.731	ng/ul#	95
86) Bis(2-ethylhexyl)phtha...	20.980	149	155631	3.130	ng/ul#	85

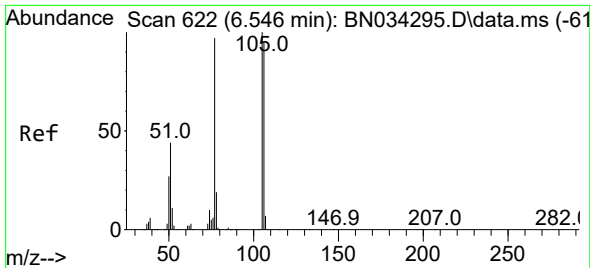
(#) = qualifier out of range (m) = manual integration (+) = signals summed

Data Path : Z:\svoasrv\HPCHEM1\BNA_N\Data\BN100124\
Data File : BN034313.D
Acq On : 01 Oct 2024 22:27
Operator : RC/JU
Sample : P4019-04
Misc :
ALS Vial : 21 Sample Multiplier: 1

Instrument :
BNA_N
ClientSampleId :
DDC68

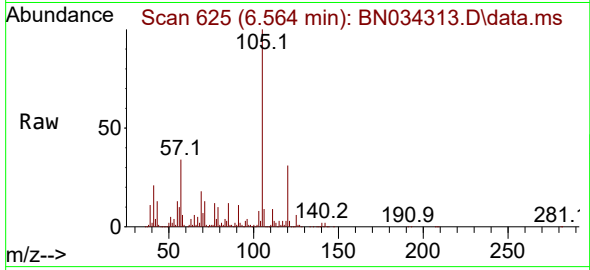
Quant Time: Oct 01 23:36:10 2024
Quant Method : Z:\svoasrv\HPCHEM1\BNA_N\Methods\SFAM-EPA-BN091124.MA.M
Quant Title : SVOA CALIBRATION
QLast Update : Mon Sep 30 14:14:38 2024
Response via : Initial Calibration



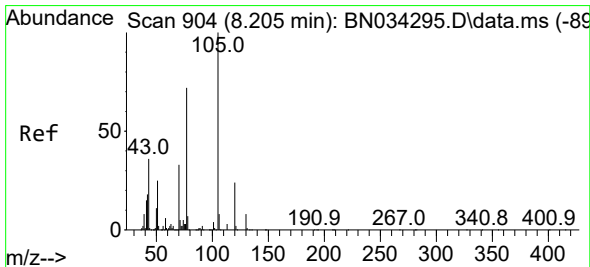
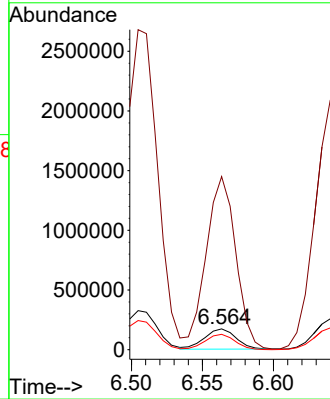
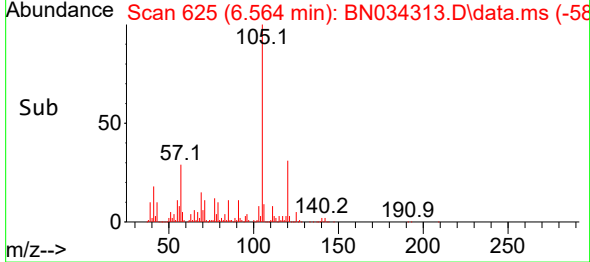


#6
Benzaldehyde
Concen: 27.413 ng/ul
RT: 6.564 min Scan# 61
Delta R.T. 0.018 min
Lab File: BN034313.D
Acq: 01 Oct 2024 22:27

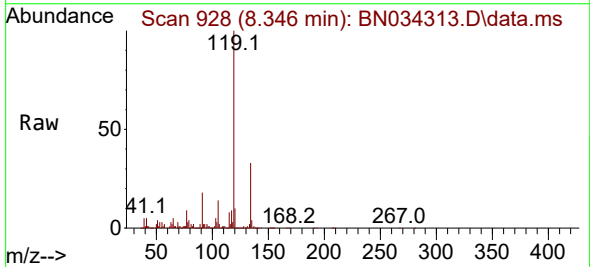
Instrument :
BNA_N
ClientSampleId :
DDC68



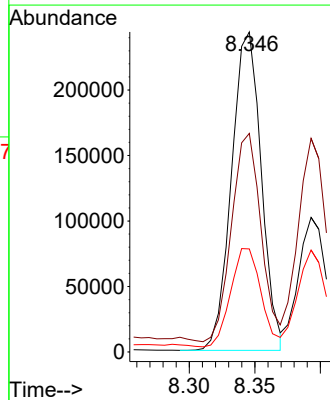
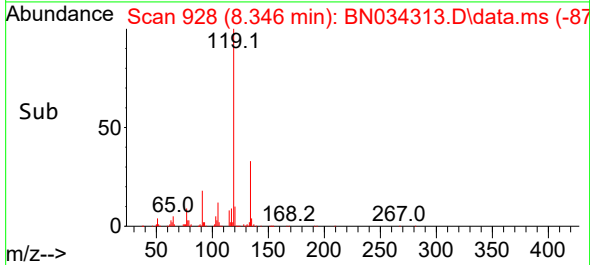
Tgt Ion: 77 Resp: 262571
Ion Ratio Lower Upper
77 100
105 829.0 76.4 114.6#
106 73.7 69.8 104.6

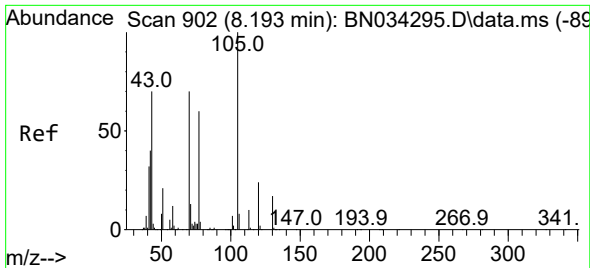


#16
Acetophenone
Concen: 16.219 ng/ul
RT: 8.346 min Scan# 928
Delta R.T. 0.141 min
Lab File: BN034313.D
Acq: 01 Oct 2024 22:27



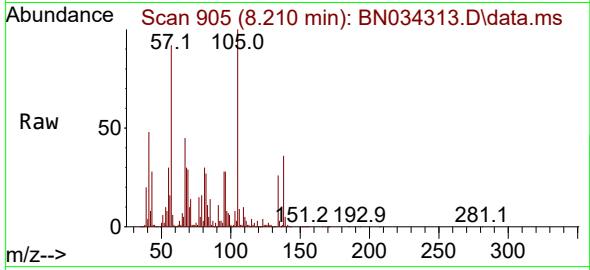
Tgt Ion: 105 Resp: 383613
Ion Ratio Lower Upper
105 100
77 68.3 61.1 91.7
51 32.2 22.6 33.8





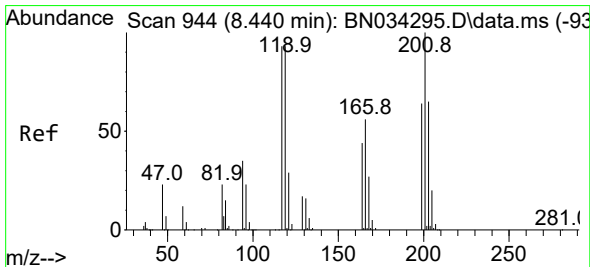
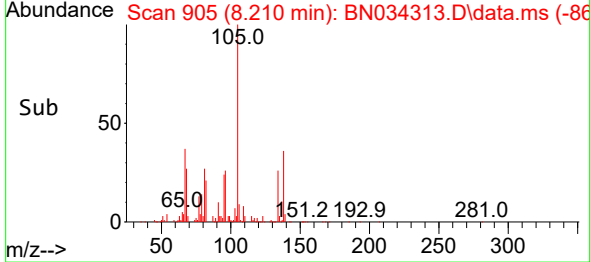
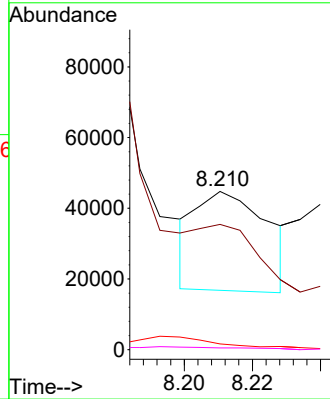
#17
 N-Nitroso-di-n-propylamine
 Concen: 3.507 ng/ul
 RT: 8.210 min Scan# 902
 Delta R.T. 0.012 min
 Lab File: BN034313.D
 Acq: 01 Oct 2024 22:27

Instrument :
 BNA_N
 ClientSampleId :
 DDC68



Tgt Ion: 70 Resp: 41070

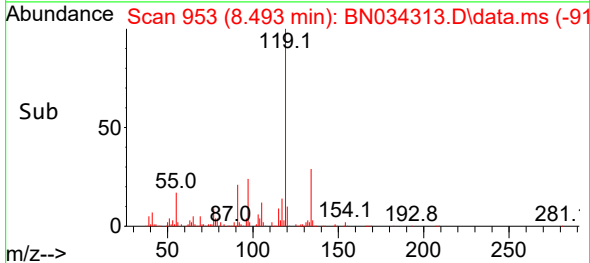
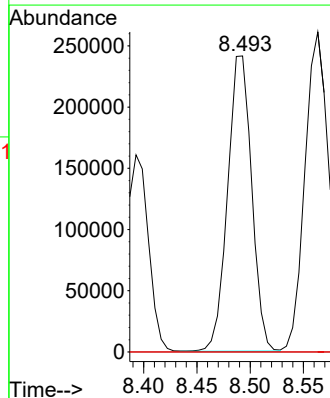
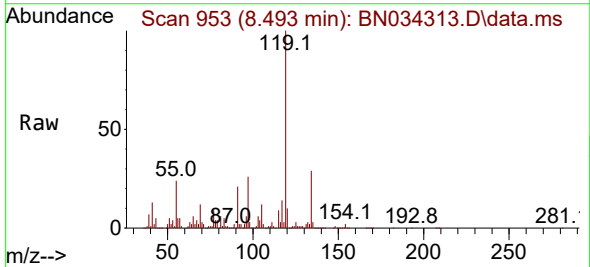
Ion	Ratio	Lower	Upper
70	100		
42	79.2	47.9	71.9#
101	3.7	7.5	11.3#
130	1.1	16.2	24.2#

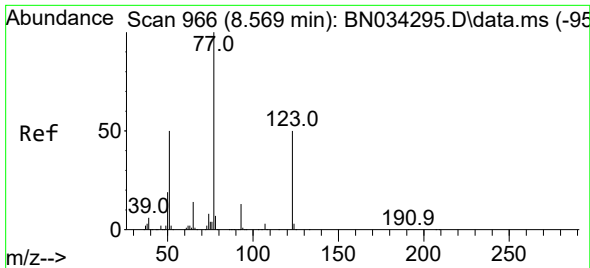


#19
 Hexachloroethane
 Concen: 61.403 ng/ul
 RT: 8.493 min Scan# 953
 Delta R.T. 0.053 min
 Lab File: BN034313.D
 Acq: 01 Oct 2024 22:27

Tgt Ion: 117 Resp: 379087

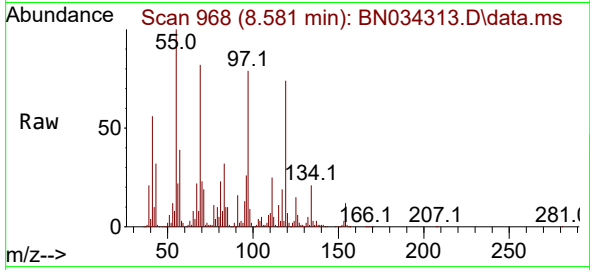
Ion	Ratio	Lower	Upper
117	100		
201	0.0	73.9	110.9#
199	0.0	44.0	66.0#



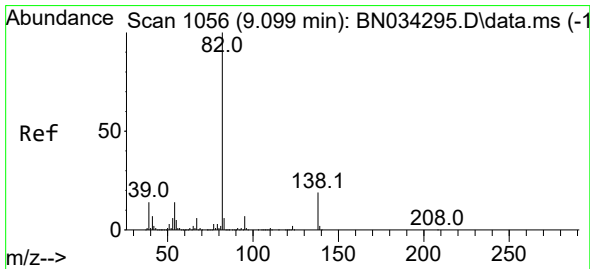
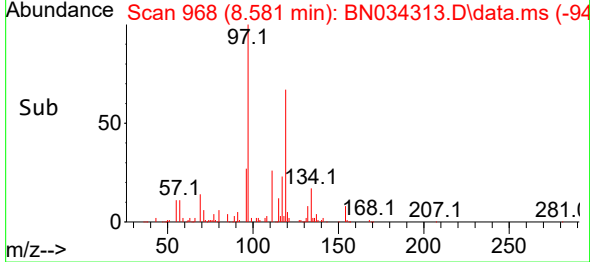
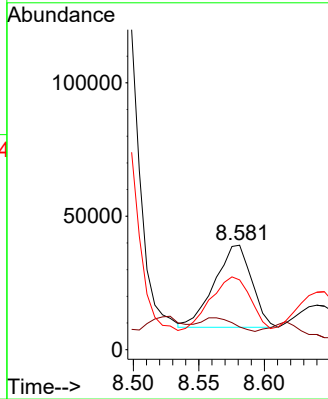


#22
 Nitrobenzene
 Concen: 3.802 ng/ul
 RT: 8.581 min Scan# 90
 Delta R.T. 0.012 min
 Lab File: BN034313.D
 Acq: 01 Oct 2024 22:27

Instrument :
 BNA_N
 ClientSampleId :
 DDC68

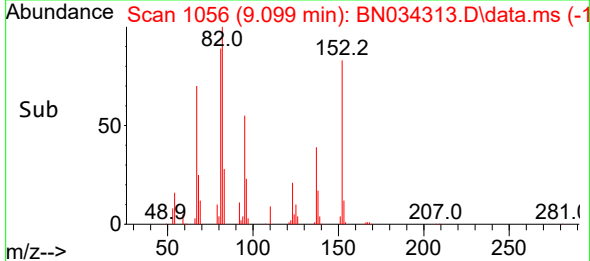
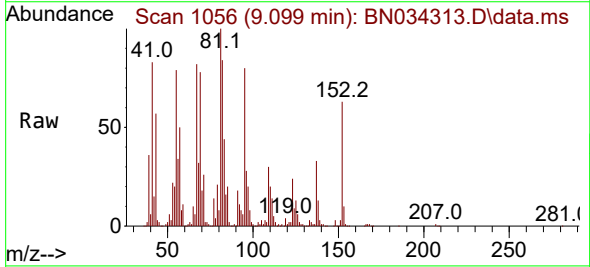
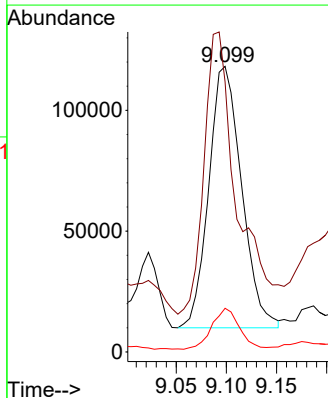


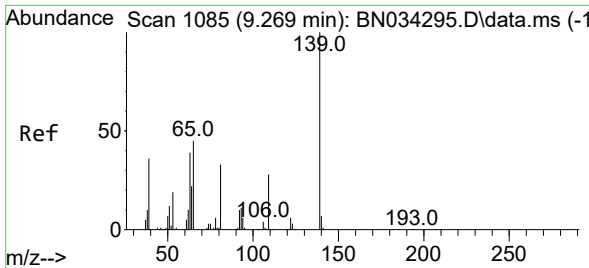
Tgt Ion: 77 Resp: 60491
 Ion Ratio Lower Upper
 77 100
 123 21.7 34.5 51.7#
 65 66.8 11.0 16.6#



#23
 Isophorone
 Concen: 8.421 ng/ul
 RT: 9.099 min Scan# 1056
 Delta R.T. 0.000 min
 Lab File: BN034313.D
 Acq: 01 Oct 2024 22:27

Tgt Ion: 82 Resp: 247034
 Ion Ratio Lower Upper
 82 100
 95 94.6 6.1 9.1#
 138 15.3 13.4 20.0

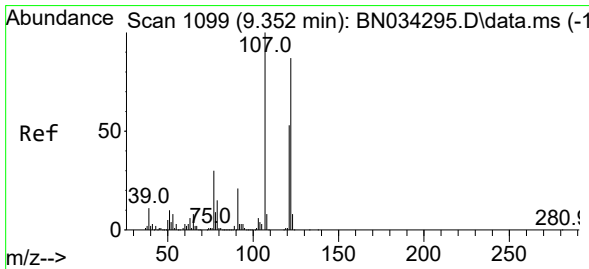
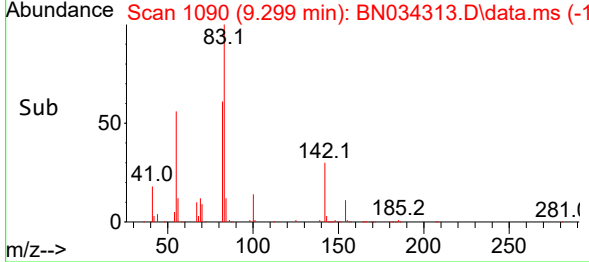
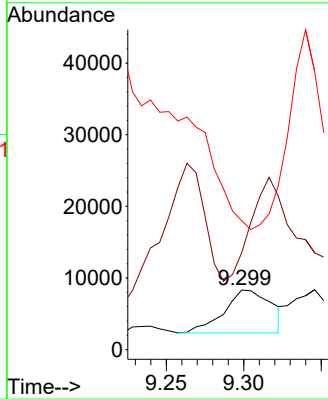
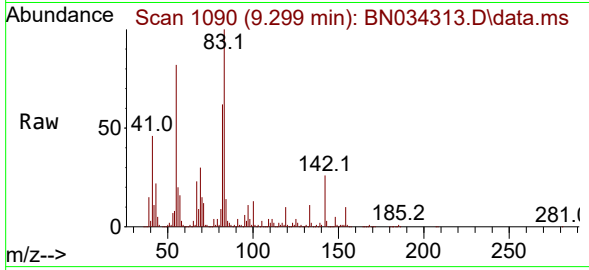




#25
 2-Nitrophenol
 Concen: 1.730 ng/ul
 RT: 9.299 min Scan# 1102
 Delta R.T. 0.024 min
 Lab File: BN034313.D
 Acq: 01 Oct 2024 22:27

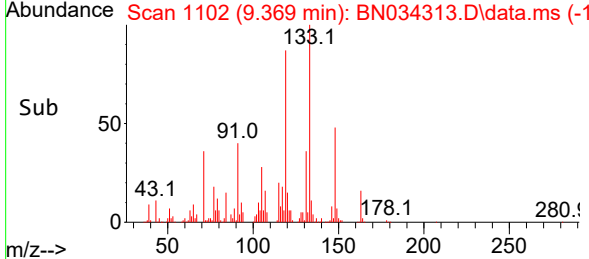
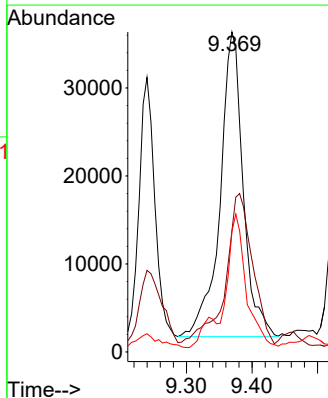
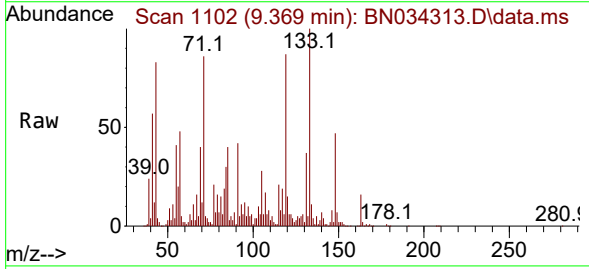
Instrument :
 BNA_N
 ClientSampleId :
 DDC68

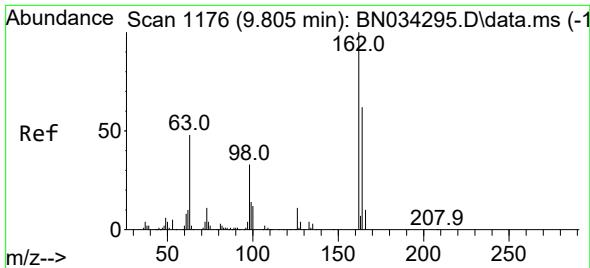
Tgt Ion:139 Resp: 12654
 Ion Ratio Lower Upper
 139 100
 65 162.6 42.0 63.0#
 109 216.3 26.5 39.7#



#26
 2,4-Dimethylphenol
 Concen: 5.628 ng/ul
 RT: 9.369 min Scan# 1102
 Delta R.T. 0.018 min
 Lab File: BN034313.D
 Acq: 01 Oct 2024 22:27

Tgt Ion:107 Resp: 84691
 Ion Ratio Lower Upper
 107 100
 121 38.0 38.4 57.6#
 122 37.7 62.9 94.3#



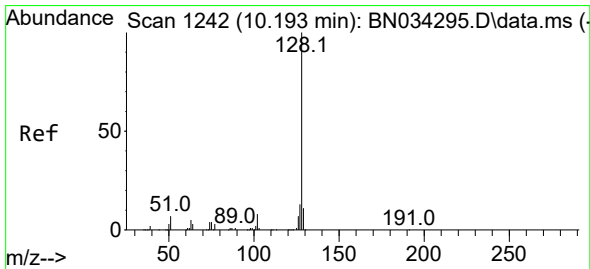
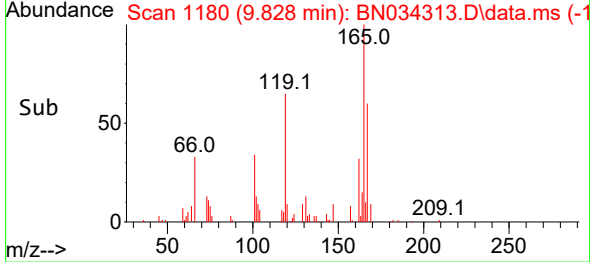
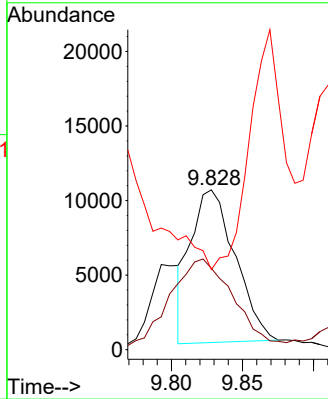
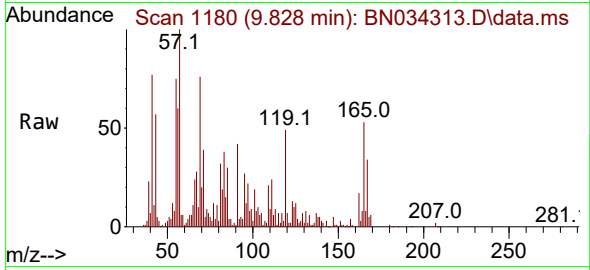


#29
 2,4-Dichlorophenol
 Concen: 1.786 ng/uI
 RT: 9.828 min Scan# 1176
 Delta R.T. 0.024 min
 Lab File: BN034313.D
 Acq: 01 Oct 2024 22:27

Instrument :
 BNA_N
 ClientSampleId :
 DDC68

Tgt Ion:162 Resp: 22265

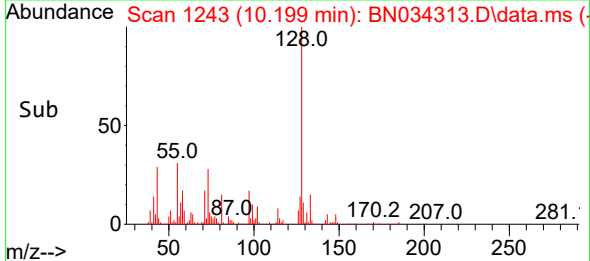
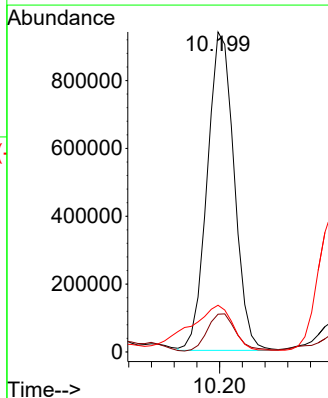
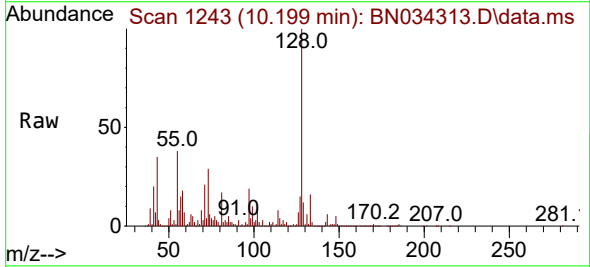
Ion	Ratio	Lower	Upper
162	100		
164	50.9	53.0	79.6#
98	50.2	30.6	46.0#

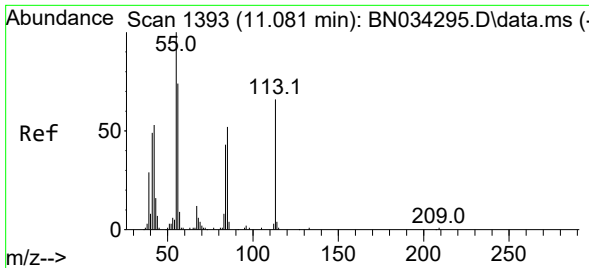


#30
 Naphthalene
 Concen: 35.390 ng/uI
 RT: 10.199 min Scan# 1243
 Delta R.T. 0.006 min
 Lab File: BN034313.D
 Acq: 01 Oct 2024 22:27

Tgt Ion:128 Resp: 1543660

Ion	Ratio	Lower	Upper
128	100		
129	11.8	8.7	13.1
127	14.6	10.6	16.0



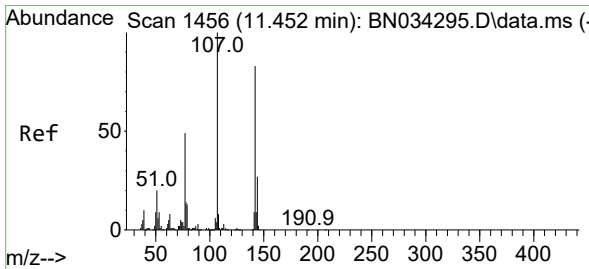
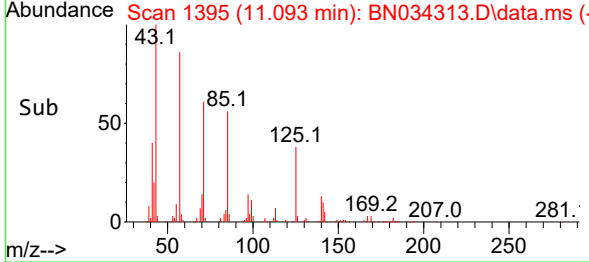
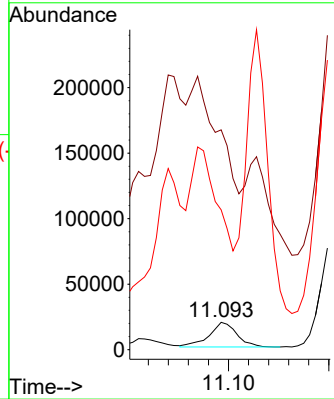
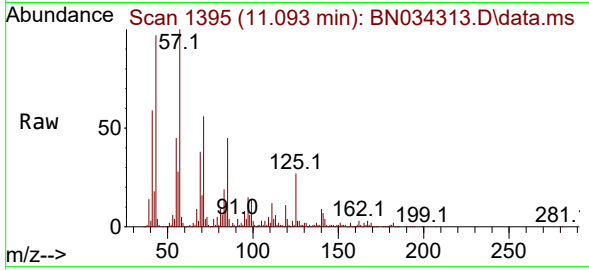


#34
 Caprolactam
 Concen: 7.322 ng/ul
 RT: 11.093 min Scan# 111
 Delta R.T. 0.006 min
 Lab File: BN034313.D
 Acq: 01 Oct 2024 22:27

Instrument : BNA_N
 ClientSampleId : DDC68

Tgt Ion:113 Resp: 36335

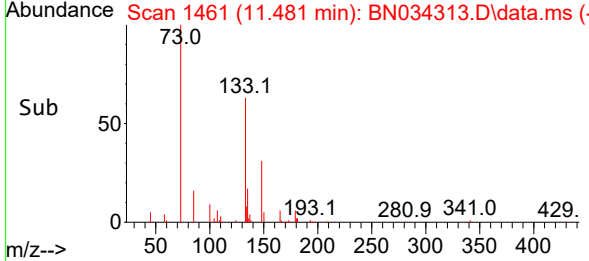
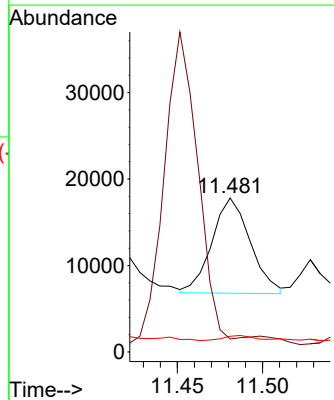
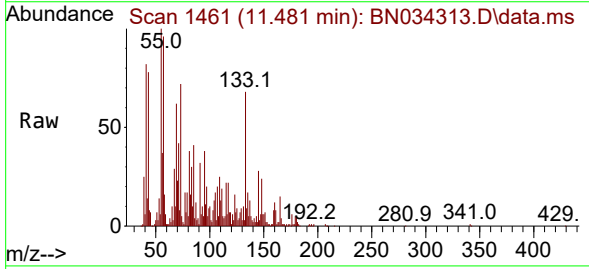
Ion	Ratio	Lower	Upper
113	100		
55	803.1	137.0	205.6#
56	510.8	99.7	149.5#

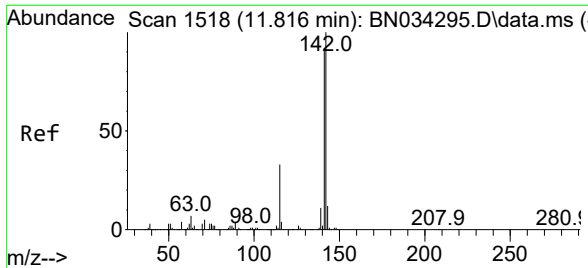


#35
 4-Chloro-3-methylphenol
 Concen: 1.172 ng/ul
 RT: 11.481 min Scan# 1461
 Delta R.T. 0.029 min
 Lab File: BN034313.D
 Acq: 01 Oct 2024 22:27

Tgt Ion:107 Resp: 17199

Ion	Ratio	Lower	Upper
107	100		
144	8.4	19.1	28.7#
142	10.2	61.4	92.0#

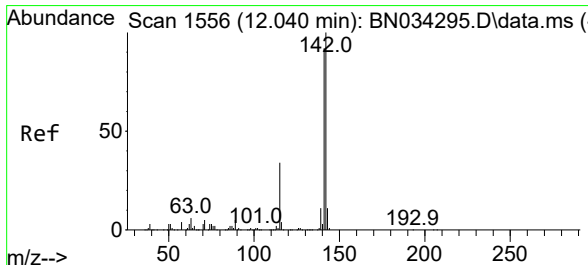
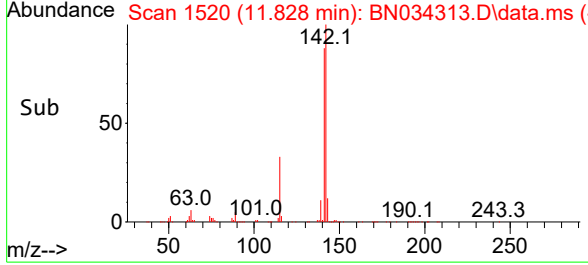
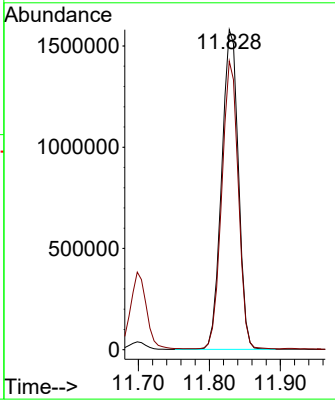
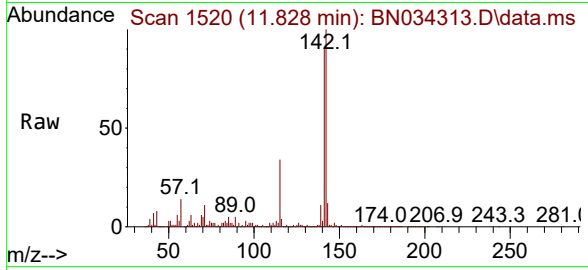




#36
 2-Methylnaphthalene
 Concen: 85.651 ng/ul
 RT: 11.828 min Scan# 1520
 Delta R.T. 0.012 min
 Lab File: BN034313.D
 Acq: 01 Oct 2024 22:27

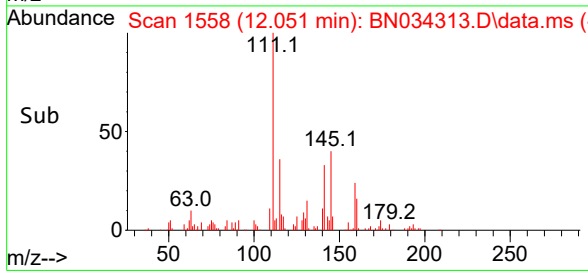
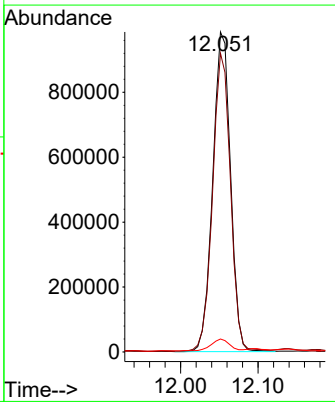
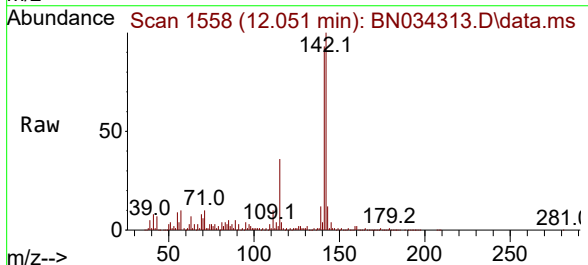
Instrument : BNA_N
 ClientSampleId : DDC68

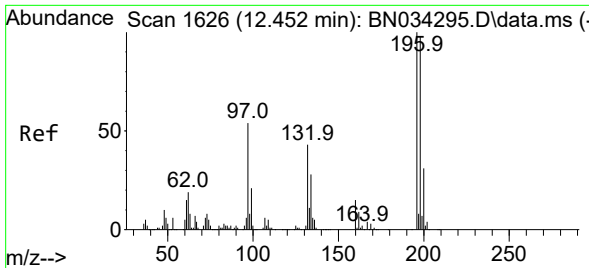
Tgt Ion:142 Resp: 2573408
 Ion Ratio Lower Upper
 142 100
 141 90.2 72.2 108.2



#37
 1-Methylnaphthalene
 Concen: 51.803 ng/ul
 RT: 12.051 min Scan# 1558
 Delta R.T. 0.012 min
 Lab File: BN034313.D
 Acq: 01 Oct 2024 22:27

Tgt Ion:142 Resp: 1575472
 Ion Ratio Lower Upper
 142 100
 141 93.4 72.5 108.7
 116 4.0 3.2 4.8

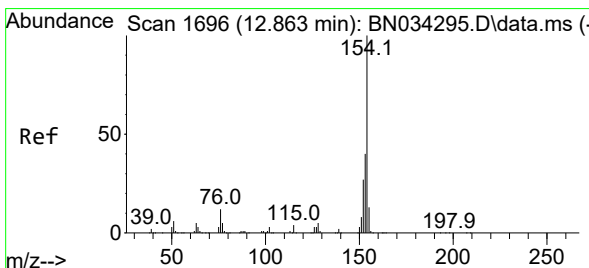
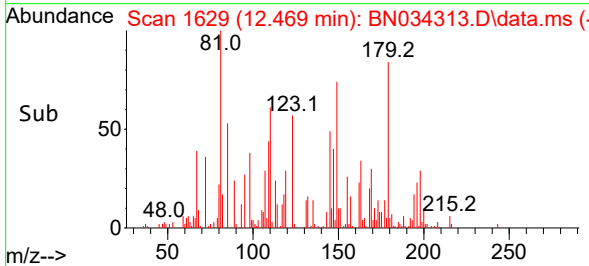
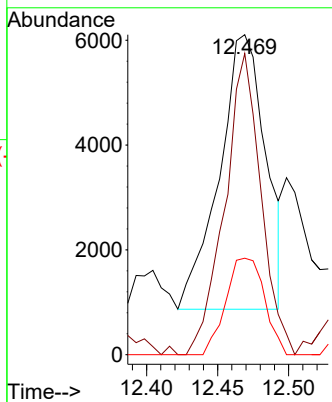
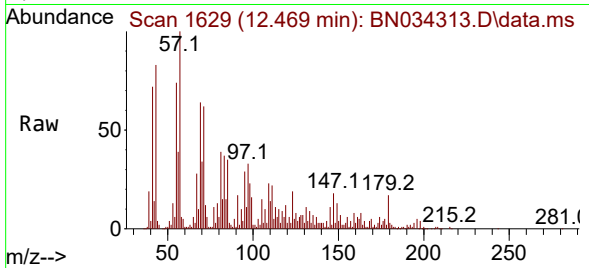




#41
 2,4,6-Trichlorophenol
 Concen: 1.131 ng/ul
 RT: 12.469 min Scan# 1629
 Delta R.T. 0.018 min
 Lab File: BN034313.D
 Acq: 01 Oct 2024 22:27

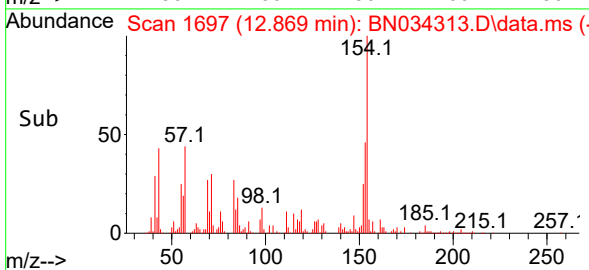
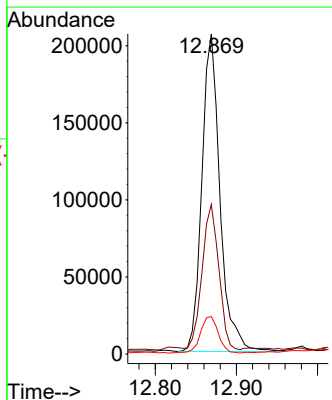
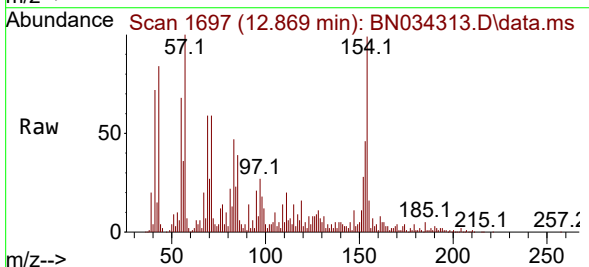
Instrument :
 BNA_N
 ClientSampleId :
 DDC68

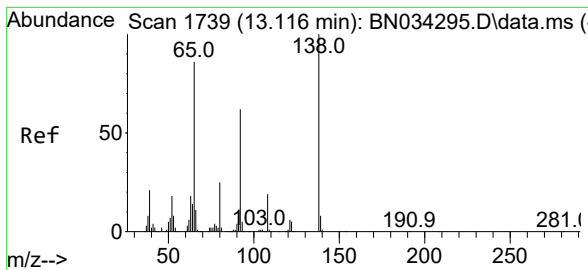
Tgt Ion	Resp	Lower	Upper
196	11902		
198	94.1	75.0	112.4
200	30.2	24.7	37.1



#43
 1,1'-Biphenyl
 Concen: 7.703 ng/ul
 RT: 12.869 min Scan# 1697
 Delta R.T. 0.006 min
 Lab File: BN034313.D
 Acq: 01 Oct 2024 22:27

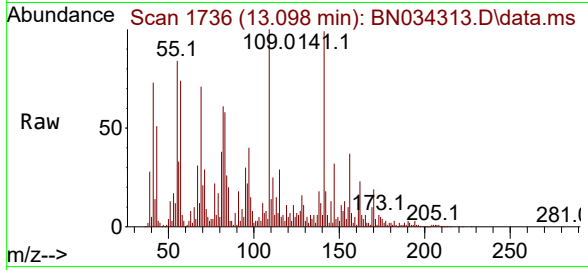
Tgt Ion	Resp	Lower	Upper
154	319287		
153	46.7	33.3	49.9
76	11.7	10.2	15.4



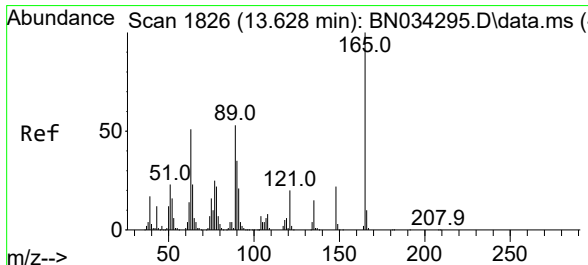
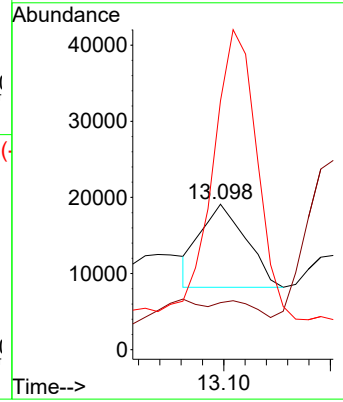
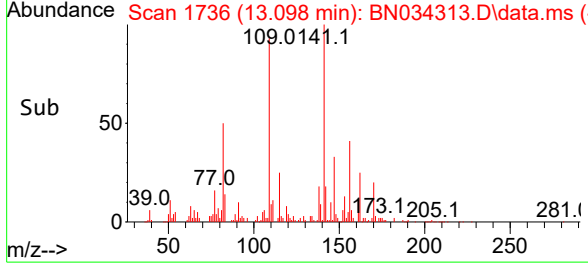


#45
 2-Nitroaniline
 Concen: 1.561 ng/ul
 RT: 13.098 min Scan# 1736
 Delta R.T. -0.018 min
 Lab File: BN034313.D
 Acq: 01 Oct 2024 22:27

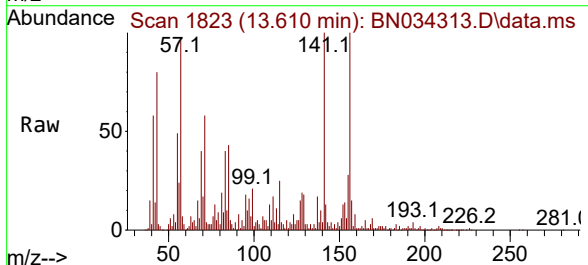
Instrument : BNA_N
 ClientSampleId : DDC68



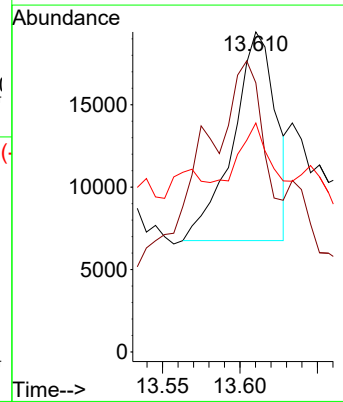
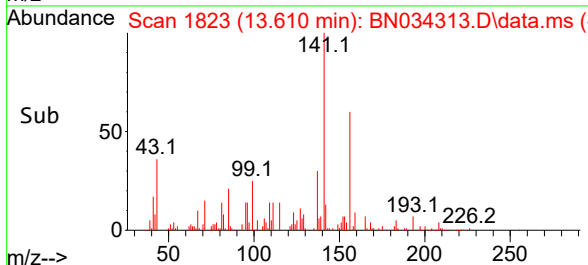
Tgt Ion: 65 Resp: 16291
 Ion Ratio Lower Upper
 65 100
 92 32.3 53.2 79.8#
 138 171.1 80.9 121.3#

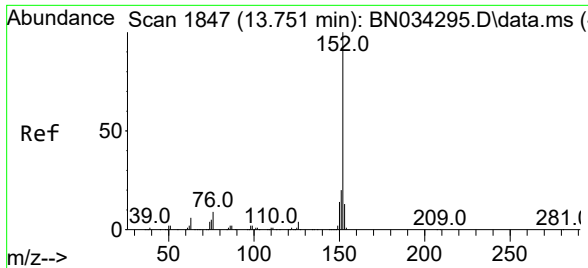


#48
 2,6-Dinitrotoluene
 Concen: 2.971 ng/ul
 RT: 13.610 min Scan# 1823
 Delta R.T. -0.023 min
 Lab File: BN034313.D
 Acq: 01 Oct 2024 22:27



Tgt Ion:165 Resp: 24497
 Ion Ratio Lower Upper
 165 100
 89 84.1 48.6 72.8#
 121 71.6 19.0 28.6#



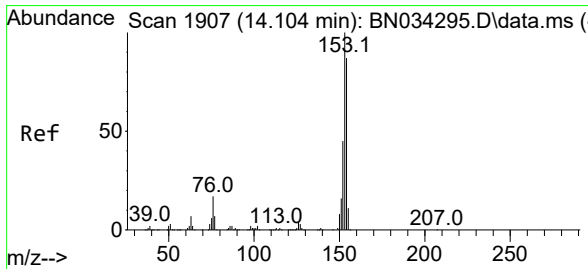
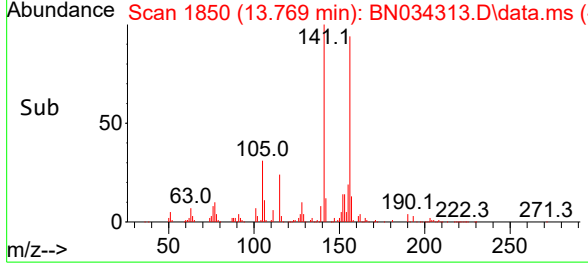
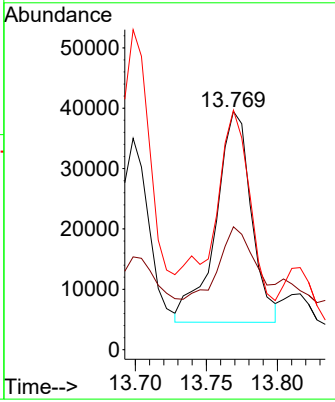
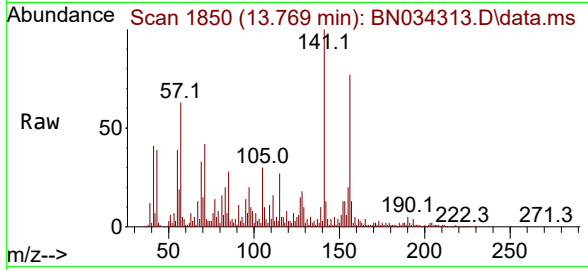


#50
 Acenaphthylene
 Concen: 1.208 ng/ul
 RT: 13.769 min Scan# 1847
 Delta R.T. 0.012 min
 Lab File: BN034313.D
 Acq: 01 Oct 2024 22:27

Instrument : BNA_N
 ClientSampleId : DDC68

Tgt Ion:152 Resp: 61086

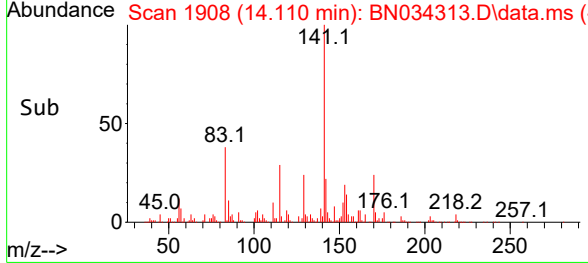
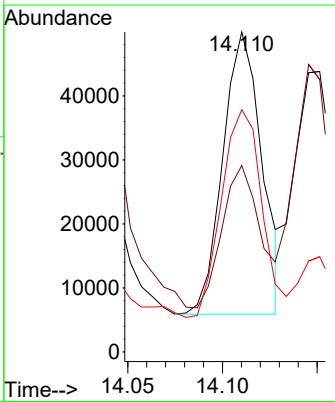
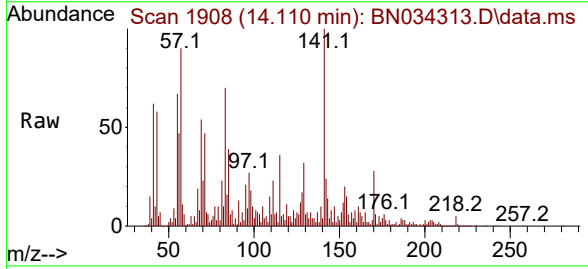
Ion	Ratio	Lower	Upper
152	100		
151	51.6	16.2	24.4#
153	100.5	10.6	16.0#

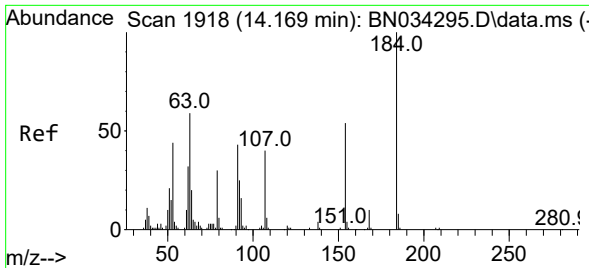


#52
 Acenaphthene
 Concen: 1.747 ng/ul
 RT: 14.110 min Scan# 1908
 Delta R.T. 0.006 min
 Lab File: BN034313.D
 Acq: 01 Oct 2024 22:27

Tgt Ion:153 Resp: 63085

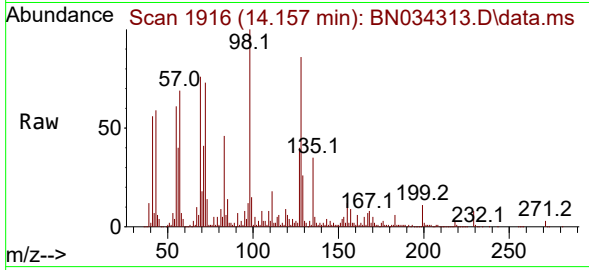
Ion	Ratio	Lower	Upper
153	100		
152	58.2	37.8	56.8#
154	75.7	71.2	106.8





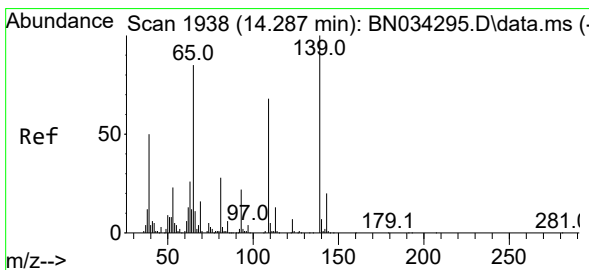
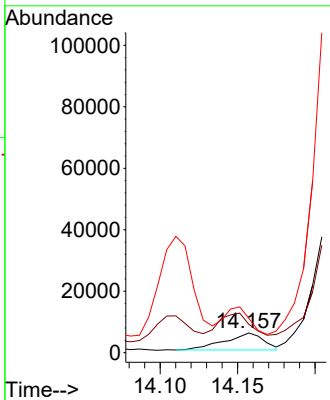
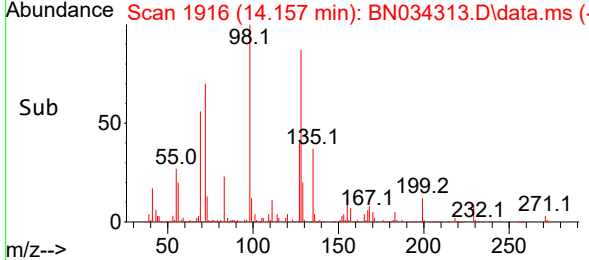
#53
 2,4-Dinitrophenol
 Concen: 1.996 ng/ul
 RT: 14.157 min Scan# 1916
 Delta R.T. -0.012 min
 Lab File: BN034313.D
 Acq: 01 Oct 2024 22:27

Instrument : BNA_N
 ClientSampleId : DDC68

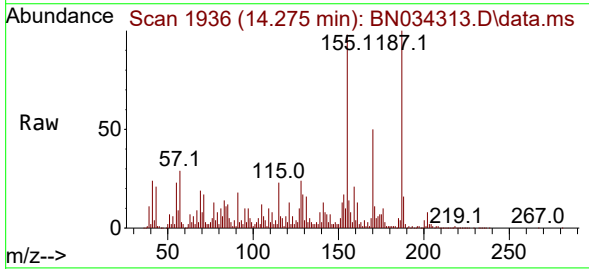


Tgt Ion:184 Resp: 9682

Ion	Ratio	Lower	Upper
184	100		
63	143.5	61.1	91.7#
154	174.4	58.5	87.7#

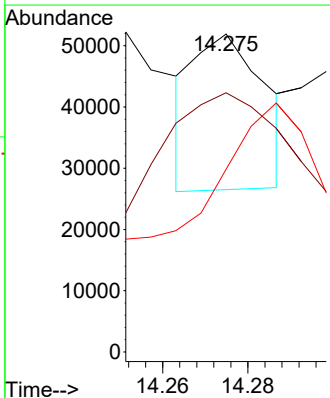
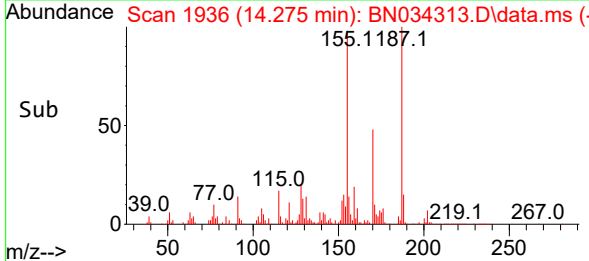


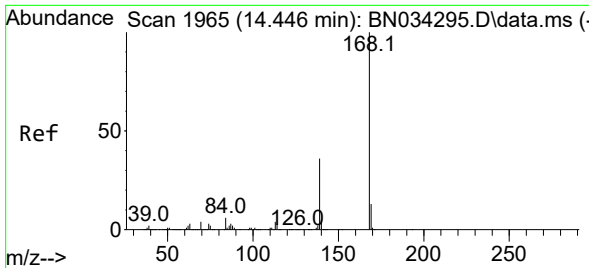
#55
 4-Nitrophenol
 Concen: 4.085 ng/ul
 RT: 14.275 min Scan# 1936
 Delta R.T. -0.012 min
 Lab File: BN034313.D
 Acq: 01 Oct 2024 22:27



Tgt Ion:109 Resp: 29254

Ion	Ratio	Lower	Upper
109	100		
139	81.5	102.8	154.2#
65	57.5	97.7	146.5#

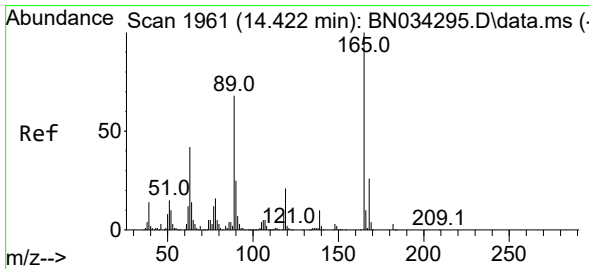
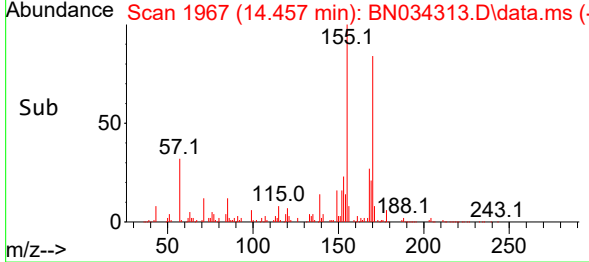
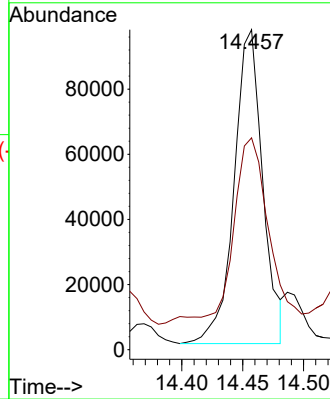
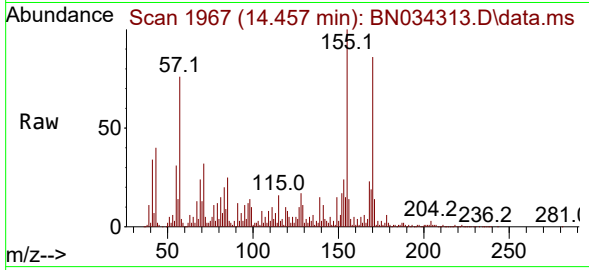




#56
 Dibenzofuran
 Concen: 3.195 ng/ul
 RT: 14.457 min Scan# 1967
 Delta R.T. 0.012 min
 Lab File: BN034313.D
 Acq: 01 Oct 2024 22:27

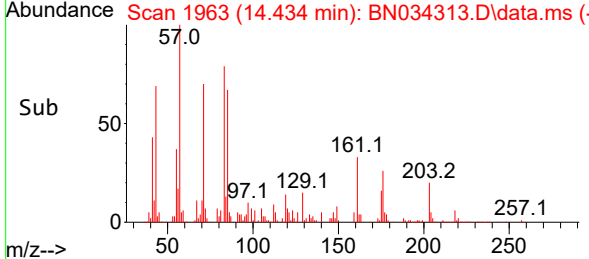
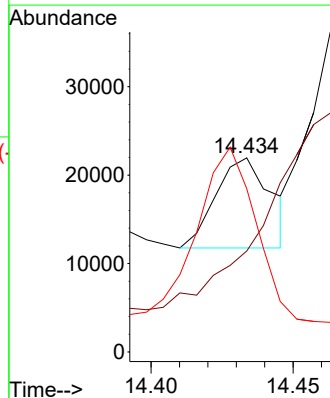
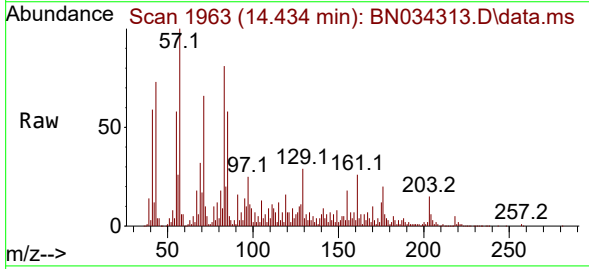
Instrument :
 BNA_N
 ClientSampleId :
 DDC68

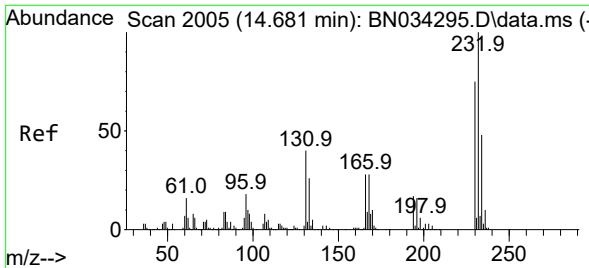
Tgt Ion:168 Resp: 157781
 Ion Ratio Lower Upper
 168 100
 139 66.2 31.7 47.5#



#57
 2,4-Dinitrotoluene
 Concen: 1.108 ng/ul
 RT: 14.434 min Scan# 1963
 Delta R.T. 0.006 min
 Lab File: BN034313.D
 Acq: 01 Oct 2024 22:27

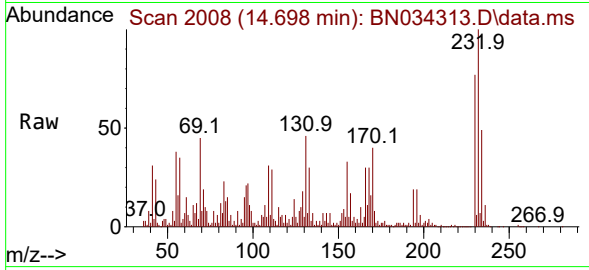
Tgt Ion:165 Resp: 13776
 Ion Ratio Lower Upper
 165 100
 63 52.0 37.8 56.8
 182 84.1 2.3 3.5#



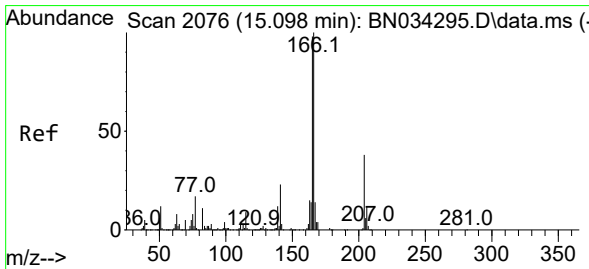
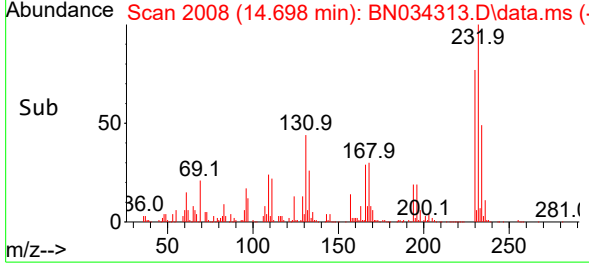
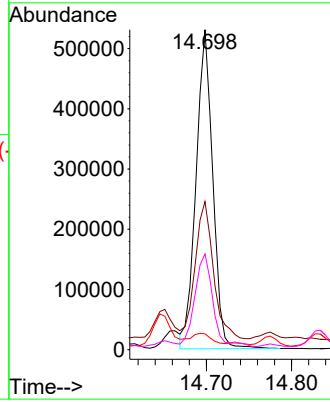


#58
 2,3,4,6-Tetrachlorophenol
 Concen: 75.532 ng/ul
 RT: 14.698 min Scan# 2008
 Delta R.T. 0.018 min
 Lab File: BN034313.D
 Acq: 01 Oct 2024 22:27

Instrument :
 BNA_N
 ClientSampleId :
 DDC68

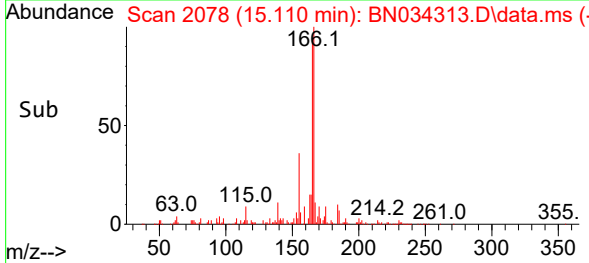
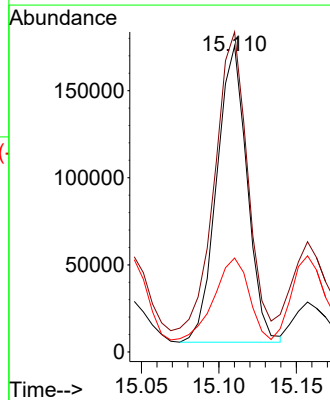
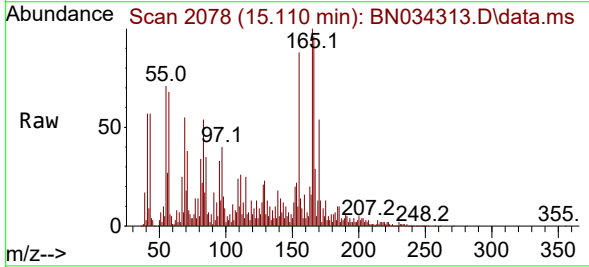


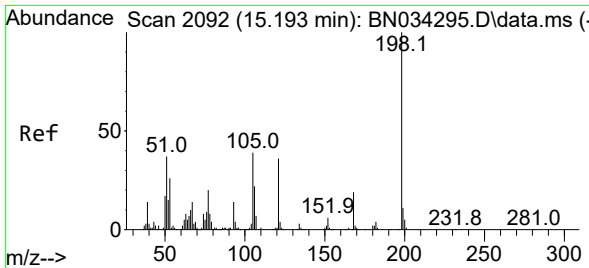
Tgt Ion:232 Resp: 724460
 Ion Ratio Lower Upper
 232 100
 131 46.3 41.0 61.6
 130 4.9 2.2 3.2#
 166 29.9 27.1 40.7



#61
 Fluorene
 Concen: 5.752 ng/ul
 RT: 15.110 min Scan# 2078
 Delta R.T. 0.012 min
 Lab File: BN034313.D
 Acq: 01 Oct 2024 22:27

Tgt Ion:166 Resp: 232362
 Ion Ratio Lower Upper
 166 100
 165 104.6 81.9 122.9
 167 30.7 10.9 16.3#

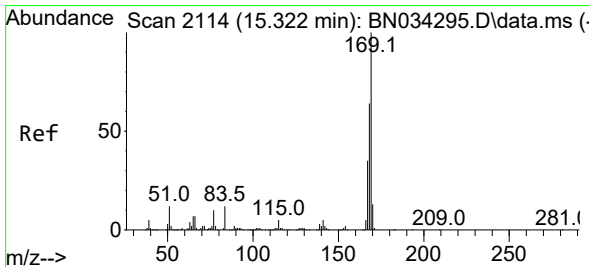
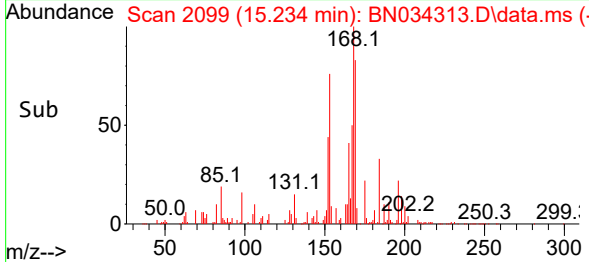
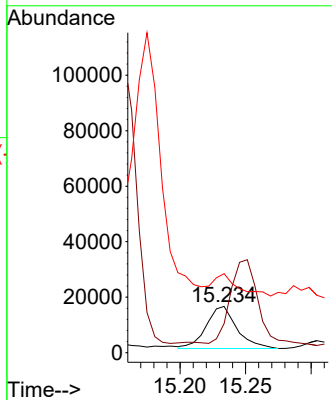
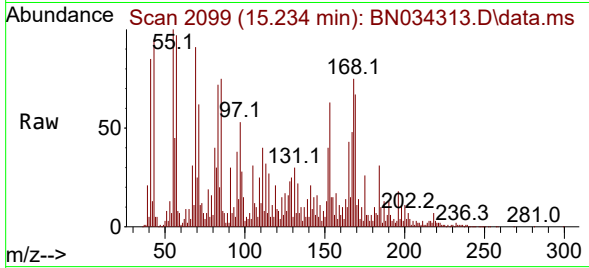




#66
 4,6-Dinitro-2-methylphenol
 Concen: 3.436 ng/ul
 RT: 15.234 min Scan# 2099
 Delta R.T. 0.041 min
 Lab File: BN034313.D
 Acq: 01 Oct 2024 22:27

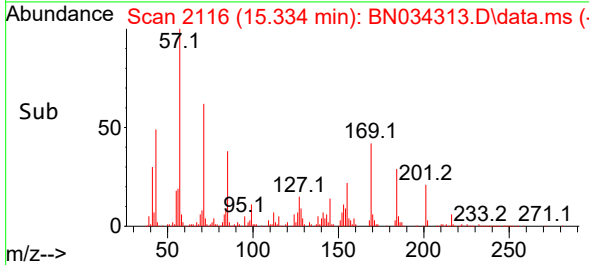
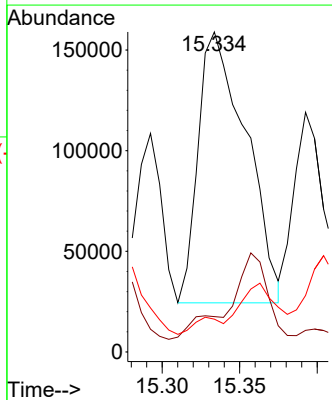
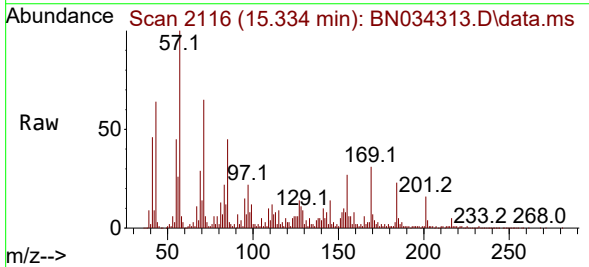
Instrument : BNA_N
 ClientSampleId : DDC68

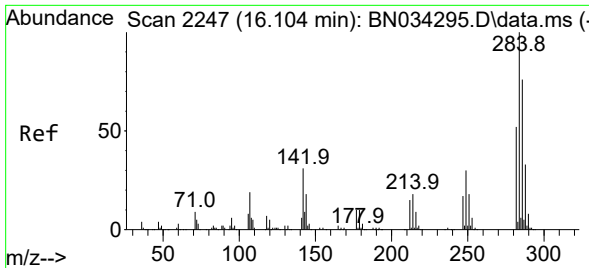
Tgt Ion:198 Resp: 24568
 Ion Ratio Lower Upper
 198 100
 182 63.0 3.2 4.8#
 77 171.1 21.1 31.7#



#67
 N-Nitrosodiphenylamine
 Concen: 8.906 ng/ul
 RT: 15.334 min Scan# 2116
 Delta R.T. 0.012 min
 Lab File: BN034313.D
 Acq: 01 Oct 2024 22:27

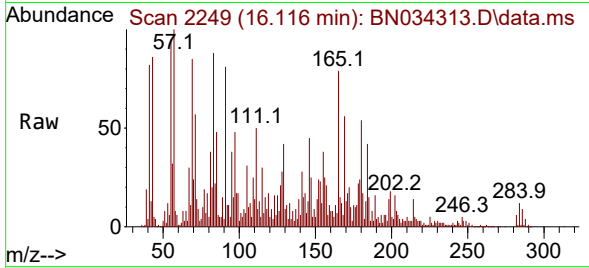
Tgt Ion:169 Resp: 288191
 Ion Ratio Lower Upper
 169 100
 168 11.1 52.8 79.2#
 167 10.2 28.6 43.0#





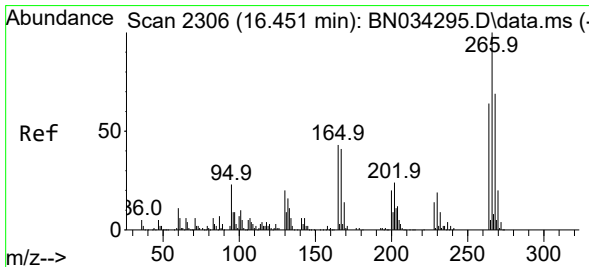
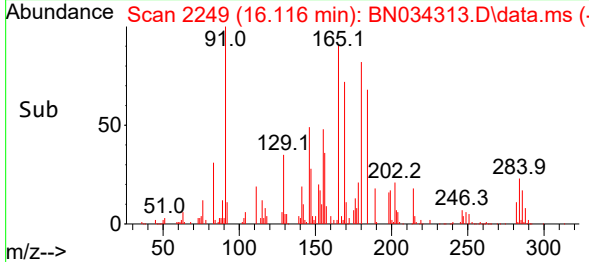
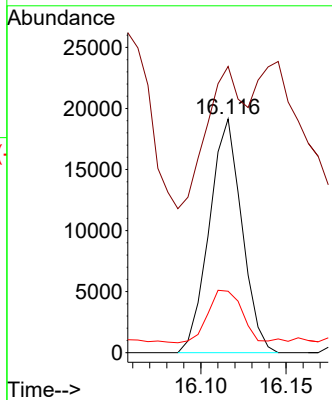
#69
 Hexachlorobenzene
 Concen: 2.004 ng/uI
 RT: 16.116 min Scan# 2112
 Delta R.T. 0.012 min
 Lab File: BN034313.D
 Acq: 01 Oct 2024 22:27

Instrument :
 BNA_N
 ClientSampleId :
 DDC68



Tgt Ion:284 Resp: 25509

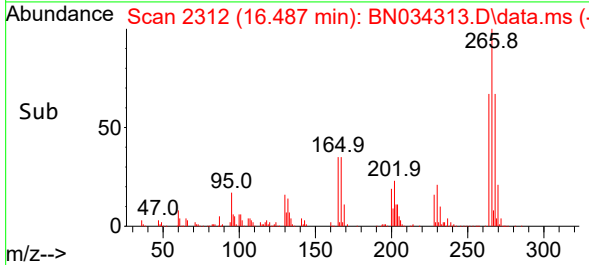
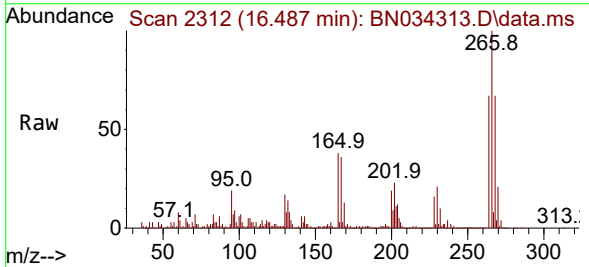
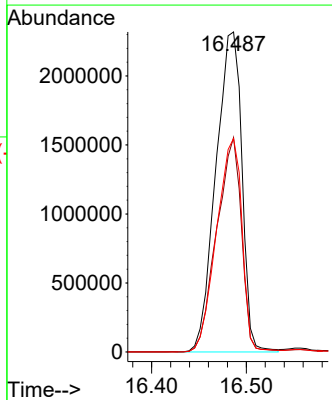
Ion	Ratio	Lower	Upper
284	100		
142	122.4	31.3	46.9#
249	26.3	25.1	37.7

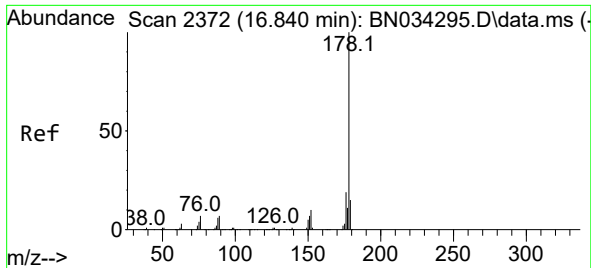


#71
 Pentachlorophenol
 Concen: 520.978 ng/uI
 RT: 16.487 min Scan# 2312
 Delta R.T. 0.029 min
 Lab File: BN034313.D
 Acq: 01 Oct 2024 22:27

Tgt Ion:266 Resp: 4416377

Ion	Ratio	Lower	Upper
266	100		
264	67.0	51.1	76.7
268	66.7	52.8	79.2

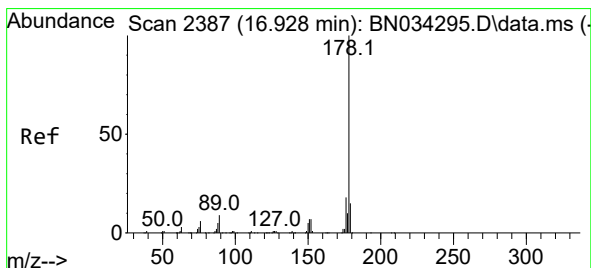
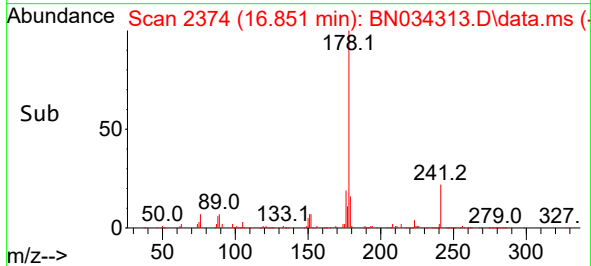
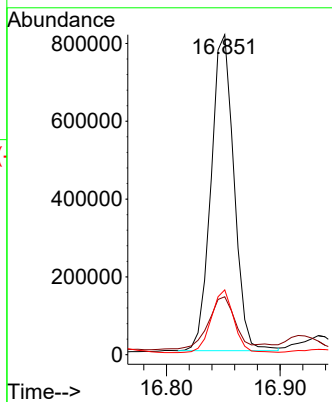
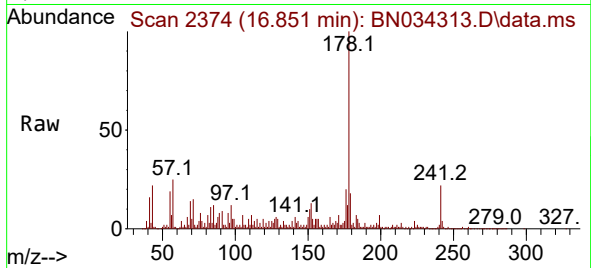




#72
 Phenanthrene
 Concen: 19.166 ng/uI
 RT: 16.851 min Scan# 2374
 Delta R.T. 0.012 min
 Lab File: BN034313.D
 Acq: 01 Oct 2024 22:27

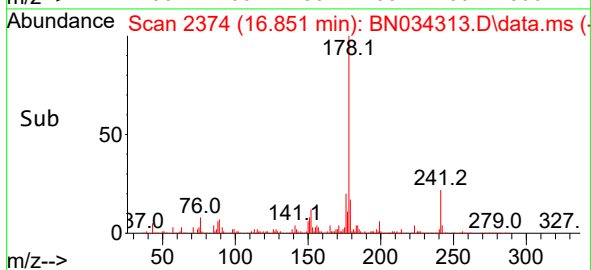
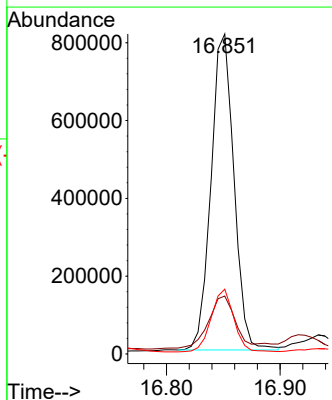
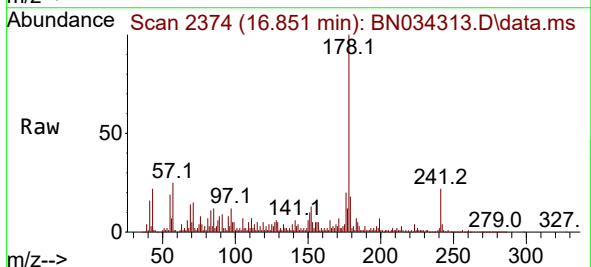
Instrument :
 BNA_N
 ClientSampleId :
 DDC68

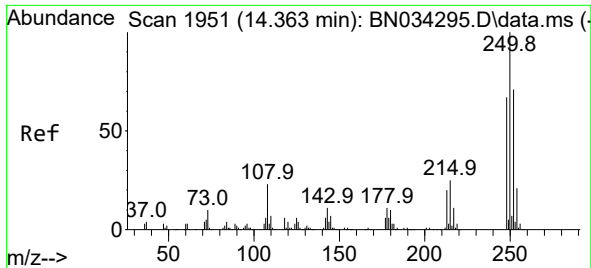
Tgt Ion:178 Resp: 1141257
 Ion Ratio Lower Upper
 178 100
 179 18.1 11.9 17.9#
 176 20.3 15.2 22.8



#74
 Anthracene
 Concen: 18.770 ng/uI
 RT: 16.851 min Scan# 2374
 Delta R.T. -0.082 min
 Lab File: BN034313.D
 Acq: 01 Oct 2024 22:27

Tgt Ion:178 Resp: 1141257
 Ion Ratio Lower Upper
 178 100
 179 18.1 12.2 18.2
 176 20.3 15.0 22.6

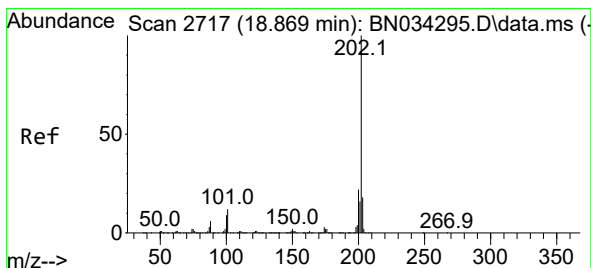
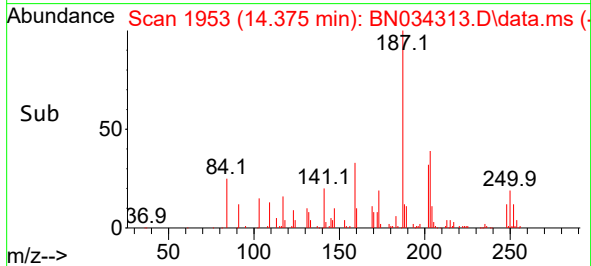
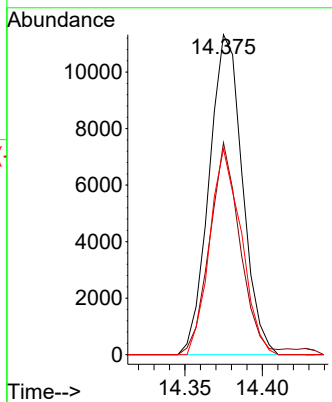
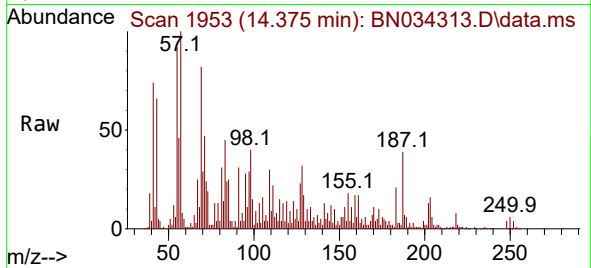




#76
 Pentachlorobenzene
 Concen: 1.105 ng/uL
 RT: 14.375 min Scan# 1953
 Delta R.T. 0.012 min
 Lab File: BN034313.D
 Acq: 01 Oct 2024 22:27

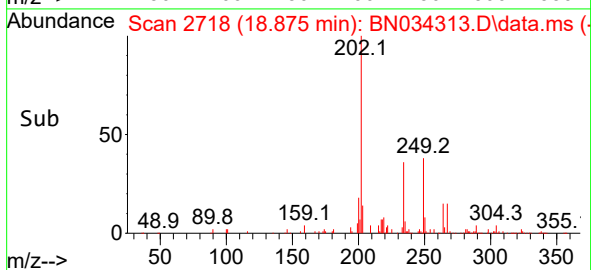
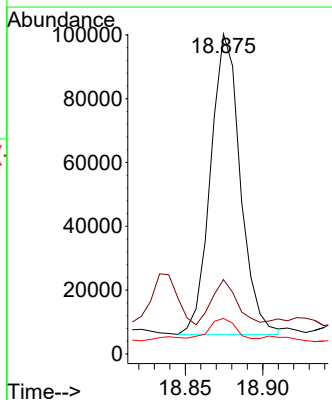
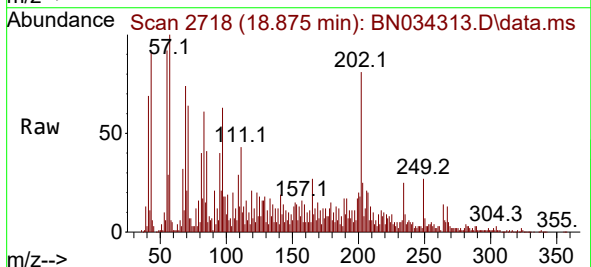
Instrument :
 BNA_N
 ClientSampleId :
 DDC68

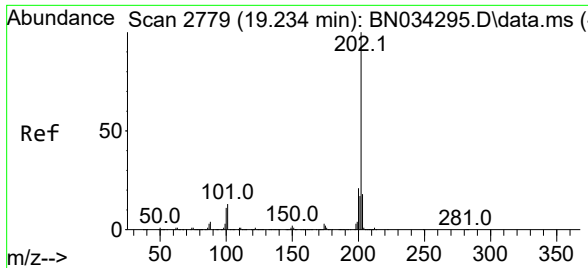
Tgt Ion	Resp	Lower	Upper
250	16908		
250	100		
248	66.3	49.3	73.9
252	64.3	49.1	73.7



#80
 Fluoranthene
 Concen: 1.783 ng/uL
 RT: 18.875 min Scan# 2718
 Delta R.T. 0.006 min
 Lab File: BN034313.D
 Acq: 01 Oct 2024 22:27

Tgt Ion	Resp	Lower	Upper
202	125677		
202	100		
101	23.3	9.6	14.4
100	11.1	7.7	11.5

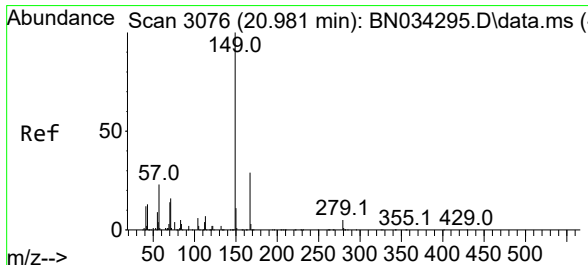
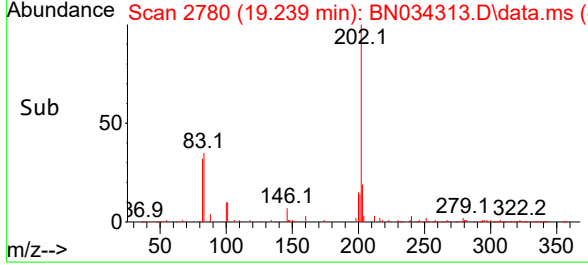
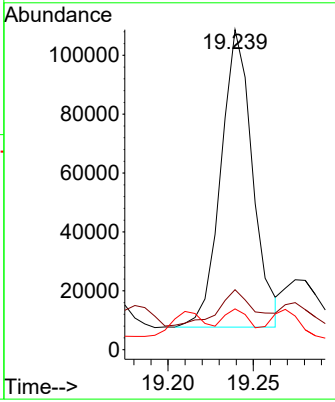
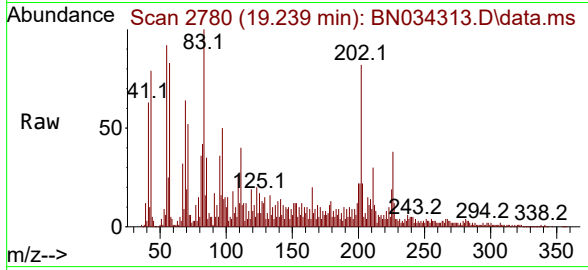




#82
 Pyrene
 Concen: 1.731 ng/ul
 RT: 19.239 min Scan# 21
 Delta R.T. 0.000 min
 Lab File: BN034313.D
 Acq: 01 Oct 2024 22:27

Instrument : BNA_N
 ClientSampleId : DDC68

Tgt Ion	Resp	Lower	Upper
202	131134		
101	18.7	11.8	17.8#
100	12.7	10.0	15.0



#86
 Bis(2-ethylhexyl)phthalate
 Concen: 3.130 ng/ul
 RT: 20.980 min Scan# 3076
 Delta R.T. 0.000 min
 Lab File: BN034313.D
 Acq: 01 Oct 2024 22:27

Tgt Ion	Resp	Lower	Upper
149	155631		
167	33.7	20.6	31.0#
279	6.6	3.0	4.6#

