

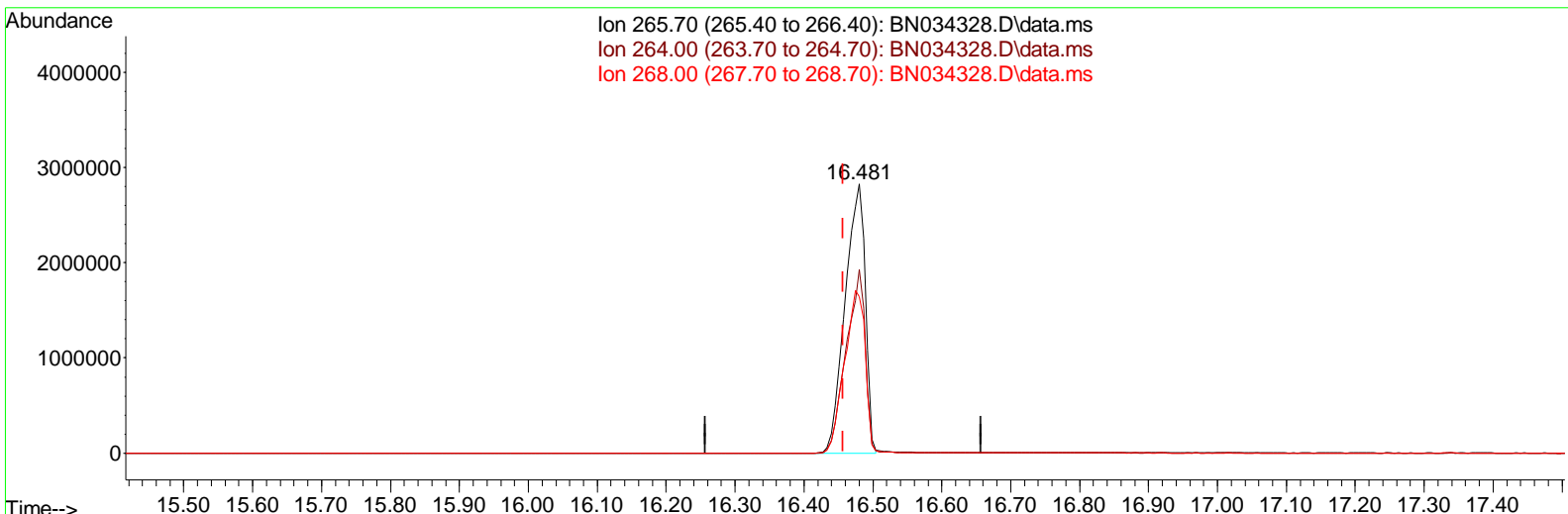
Data Path : Z:\svoasrv\HPCHEM1\BNA_N\Data\BN100124\
 Data File : BN034328.D
 Acq On : 02 Oct 2024 08:56
 Operator : RC/JU
 Sample : P4019-07DL 20X
 Misc :
 ALS Vial : 37 Sample Multiplier: 1

Instrument :
 BNA_N
 ClientSampleId :
 DDCB0DL

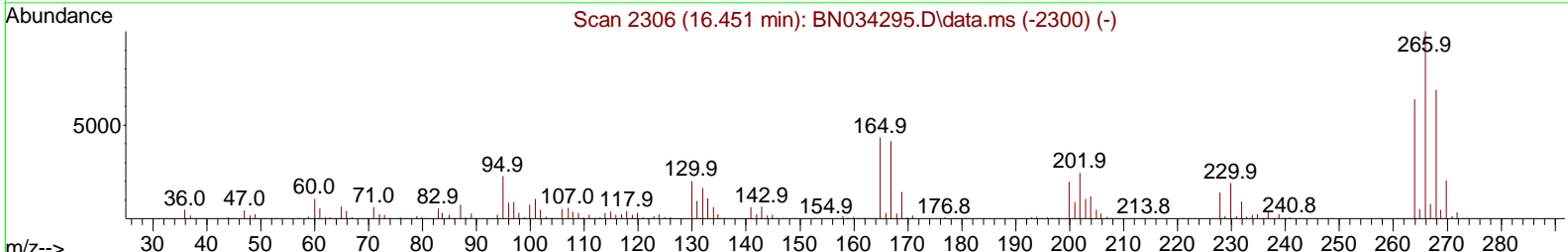
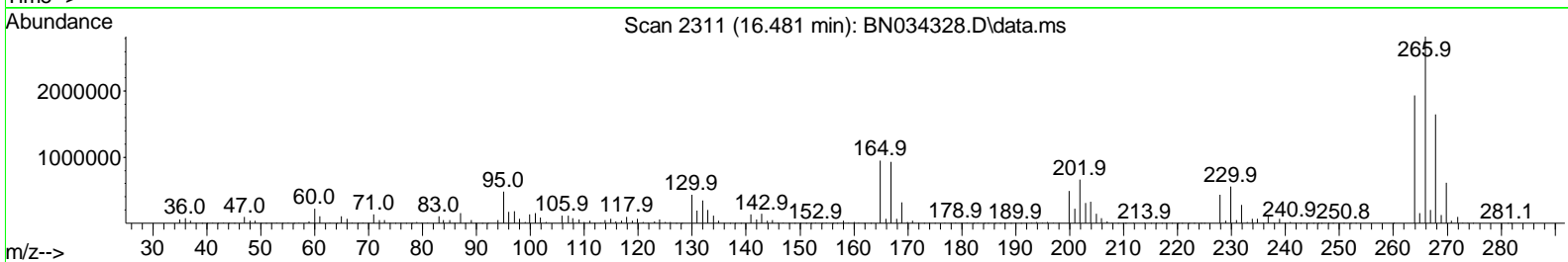
Manual Integrations APPROVED

Reviewed By :Yogesh Patel 10/04/2024
 Supervised By :mohammad ahmed 10/04/2024

Quant Time: Oct 02 09:27:10 2024
 Quant Method : Z:\svoasrv\HPCHEM1\BNA_N\Methods\SFAM-EPA-BN091124.MA.M
 Quant Title : SVOA CALIBRATION
 QLast Update : Mon Sep 30 14:14:38 2024
 Response via : Initial Calibration



Ion 265.70 (265.40 to 266.40): BN034328.D\data.ms
 Ion 264.00 (263.70 to 264.70): BN034328.D\data.ms
 Ion 268.00 (267.70 to 268.70): BN034328.D\data.ms



TIC: BN034328.D\data.ms

(71) Pentachlorophenol (C)

16.481min (+ 0.024) 628.37 ng/ul

response 5726510

| Ion | Exp% | Act% |
|--------|--------|--------|
| 265.70 | 100.00 | 100.00 |
| 264.00 | 63.90 | 68.33 |
| 268.00 | 66.00 | 58.20 |
| 0.00 | 0.00 | 0.00 |

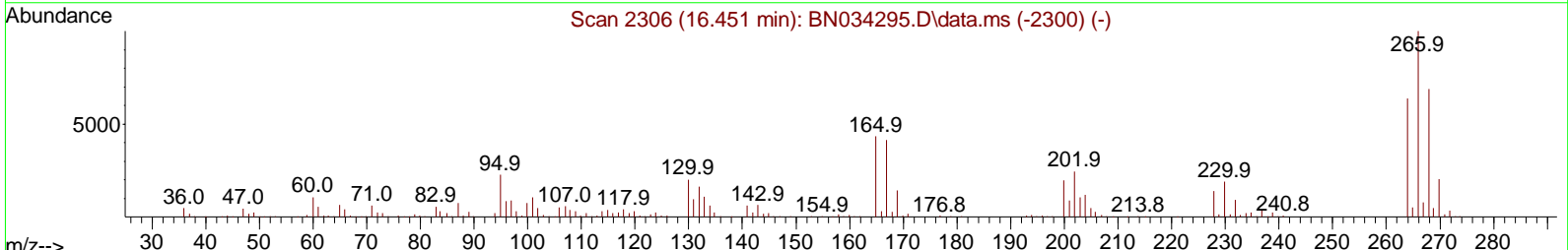
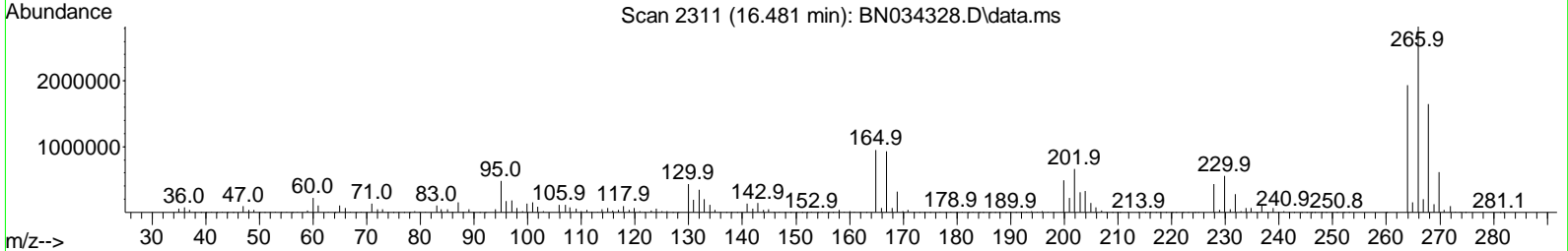
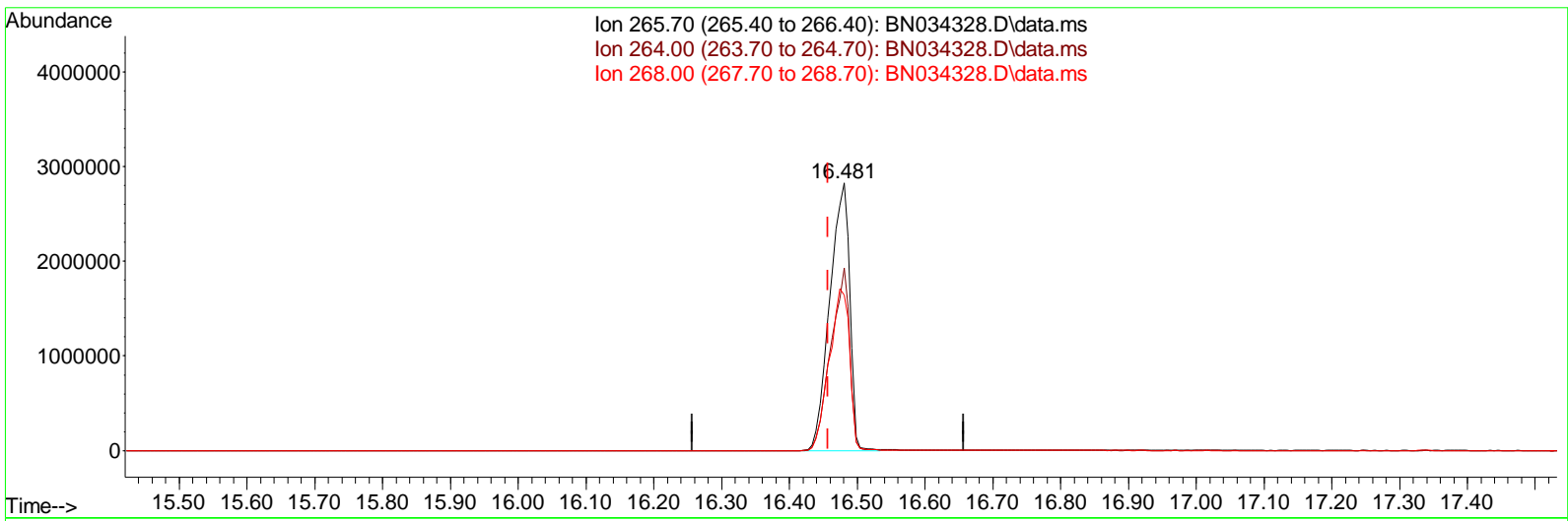
Data Path : Z:\svoasrv\HPCHEM1\BNA_N\Data\BN100124\
 Data File : BN034328.D
 Acq On : 02 Oct 2024 08:56
 Operator : RC/JU
 Sample : P4019-07DL 20X
 Misc :
 ALS Vial : 37 Sample Multiplier: 1

Instrument :
 BNA_N
ClientSampleId :
 DDCB0DL

Manual Integrations APPROVED

Reviewed By :Yogesh Patel 10/04/2024
 Supervised By :mohammad ahmed 10/04/2024

Quant Time: Oct 02 09:27:10 2024
 Quant Method : Z:\svoasrv\HPCHEM1\BNA_N\Methods\SFAM-EPA-BN091124.MA.M
 Quant Title : SVOA CALIBRATION
 QLast Update : Mon Sep 30 14:14:38 2024
 Response via : Initial Calibration



TIC: BN034328.D\data.ms

(71) Pentachlorophenol (C)

16.481min (+ 0.024) 631.49 ng/ul m

response 5754964

| Ion | Exp% | Act% |
|--------|--------|--------|
| 265.70 | 100.00 | 100.00 |
| 264.00 | 63.90 | 68.33 |
| 268.00 | 66.00 | 58.20 |
| 0.00 | 0.00 | 0.00 |

Data Path : Z:\svoasrv\HPCHEM1\BNA_N\Data\BN100124\
 Data File : BN034328.D
 Acq On : 02 Oct 2024 08:56
 Operator : RC/JU
 Sample : P4019-07DL 20X
 Misc :
 ALS Vial : 37 Sample Multiplier: 1

Instrument :
 BNA_N
ClientSampleId :
 DDCB0DL

Manual IntegrationsAPPROVED

Reviewed By :Yogesh Patel 10/04/2024
 Supervised By :mohammad ahmed 10/04/2024

Quant Time: Oct 02 09:28:58 2024
 Quant Method : Z:\svoasrv\HPCHEM1\BNA_N\Methods\SFAM-EPA-BN091124.MA.M
 Quant Title : SVOA CALI BRATI ON
 QLast Update : Mon Sep 30 14:14:38 2024
 Response via : Initial Calibration

| Compound | R.T. | QI on | Response | Conc | Units | Dev(Min) |
|------------------------------------|--------|-------|----------|---------|---------|----------|
| Internal Standards | | | | | | |
| 1) 1,4-Dichlorobenzene-d4 | 7.387 | 152 | 224329 | 20.000 | ng/ul | 0.00 |
| 20) Naphthalene-d8 | 10.140 | 136 | 892413 | 20.000 | ng/ul | 0.00 |
| 38) Acenaphthene-d10 | 14.040 | 164 | 574027 | 20.000 | ng/ul | 0.00 |
| 64) Phenanthrene-d10 | 16.804 | 188 | 1160943 | 20.000 | ng/ul | 0.00 |
| 79) Chrysene-d12 | 21.027 | 240 | 1151771 | 20.000 | ng/ul | 0.00 |
| 88) Perylene-d12 | 23.739 | 264 | 1433244 | 20.000 | ng/ul | 0.00 |
| System Monitoring Compounds | | | | | | |
| 3) 1,4-Dioxane-d8 | 0.000 | 96 | Od | 0.000 | ng/uL | |
| 4) Pyridine-d5 | 0.000 | 84 | Od | 0.000 | ng/ul | |
| 7) Phenol-d5 | 6.587 | 99 | 22123 | 1.111 | ng/ul | 0.00 |
| 9) Bis-(2-Chloroethyl)eth... | 6.740 | 67 | 20207 | 1.636 | ng/ul | 0.00 |
| 11) 2-Chlorophenol-d4 | 6.928 | 132 | 18207 | 1.162 | ng/ul | 0.00 |
| 15) 4-Methylphenol-d8 | 8.105 | 113 | 5282 | 0.322 | ng/ul | 0.00 |
| 21) Nitrobenzene-d5 | 8.534 | 128 | 8995 | 1.265 | ng/ul | 0.00 |
| 24) 2-Nitrophenol-d4 | 9.240 | 143 | 8511 | 1.164 | ng/ul | 0.00 |
| 28) 2,4-Dichlorophenol-d3 | 9.781 | 165 | 16044 | 1.165 | ng/ul | 0.00 |
| 31) 4-Chloroaniline-d4 | 10.263 | 131 | 40548 | 1.944 | ng/ul | -0.03 |
| 46) Dimethylphthalate-d6 | 13.469 | 166 | 57085 | 1.331 | ng/ul | 0.00 |
| 49) Acenaphthylene-d8 | 13.722 | 160 | 62999 | 1.305 | ng/ul | 0.00 |
| 54) 4-Nitrophenol-d4 | 0.000 | 143 | Od | 0.000 | ng/ul | |
| 60) Fluorene-d10 | 15.045 | 176 | 51873 | 1.427 | ng/ul | 0.00 |
| 65) 4,6-Dinitro-2-methylph... | 0.000 | 200 | Od | 0.000 | ng/ul | |
| 73) Anthracene-d10 | 16.898 | 188 | 74954 | 1.373 | ng/ul | 0.00 |
| 81) Pyrene-d10 | 19.204 | 212 | 90922 | 1.417 | ng/ul | 0.00 |
| 92) Benzo(a)pyrene-d12 | 23.551 | 264 | 88654 | 1.204 | ng/ul | 0.00 |
| Target Compounds | | | | | | |
| 30) Naphthalene | 10.193 | 128 | 206101 | 4.222 | ng/ul | 99 |
| 36) 2-Methylnaphthalene | 11.816 | 142 | 300785 | 8.946 | ng/ul | 99 |
| 37) 1-Methylnaphthalene | 12.040 | 142 | 177982 | 5.229 | ng/ul | 98 |
| 58) 2,3,4,6-Tetrachlorophenol | 14.681 | 232 | 748301 | 74.728 | ng/ul | 93 |
| 71) Pentachlorophenol | 16.481 | 266 | 5754964m | 631.494 | ng/ul | |
| 72) Phenanthrene | 16.839 | 178 | 117425 | 1.834 | ng/ul # | 96 |

(#) = qualifier out of range (m) = manual integration (+) = signals summed

Data Path : Z:\svoasrv\HPCHEM1\BNA_N\Data\BN100124\
 Data File : BN034328.D
 Acq On : 02 Oct 2024 08:56
 Operator : RC/JU
 Sample : P4019-07DL 20X
 Misc :
 ALS Vial : 37 Sample Multiplier: 1

Instrument :
 BNA_N
ClientSampleId :
 DDCB0DL

Manual IntegrationsAPPROVED

Reviewed By :Yogesh Patel 10/04/2024
 Supervised By :mohammad ahmed 10/04/2024

Quant Time: Oct 02 09:28:58 2024
 Quant Method : Z:\svoasrv\HPCHEM1\BNA_N\Methods\SFAM-EPA-BN091124.MA.M
 Quant Title : SVOA CALIBRATION
 QLast Update : Mon Sep 30 14:14:38 2024
 Response via : Initial Calibration

