

Data Path : Z:\svoasrv\HPCHEM1\BNA_N\Data\BN100124\
 Data File : BN034310.D
 Acq On : 01 Oct 2024 20:29
 Operator : RC/JU
 Sample : P4019-01
 Misc :
 ALS Vial : 18 Sample Multiplier: 1

Instrument :
 BNA_N
 ClientSampleId :
 DDC37

Quant Time: Oct 02 00:11:57 2024
 Quant Method : Z:\svoasrv\HPCHEM1\BNA_N\Methods\SFAM-EPA-BN091124.MA.M
 Quant Title : SVOA CALIBRATION
 QLast Update : Mon Sep 30 14:14:38 2024
 Response via : Initial Calibration

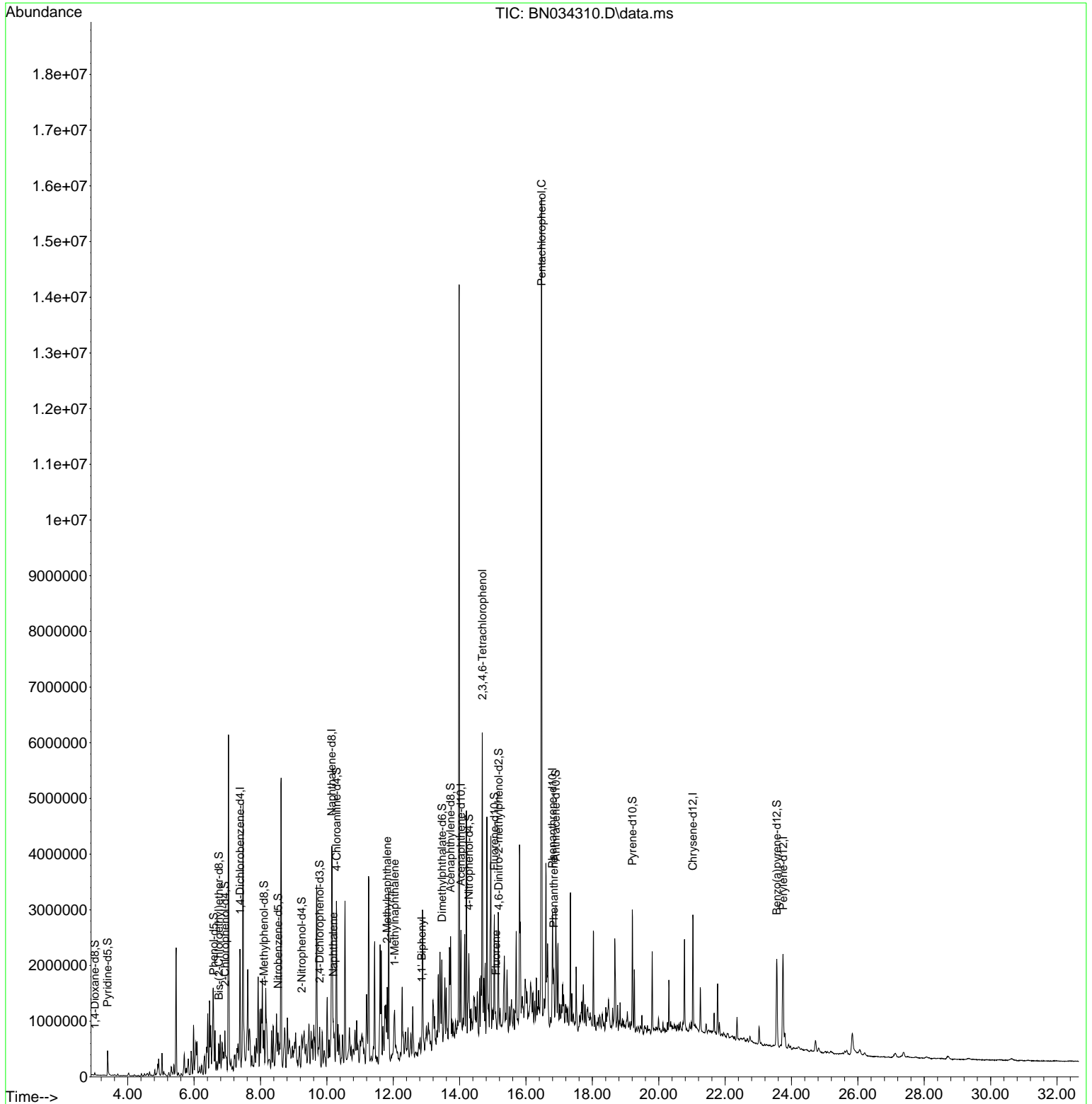
Compound	R.T.	QIon	Response	Conc	Units	Dev(Min)
Internal Standards						
1) 1,4-Dichlorobenzene-d4	7.387	152	227488	20.000	ng/ul	0.00
20) Naphthalene-d8	10.146	136	899665	20.000	ng/ul	0.00
38) Acenaphthene-d10	14.040	164	565560	20.000	ng/ul	0.00
64) Phenanthrene-d10	16.798	188	1113662	20.000	ng/ul	0.00
79) Chrysene-d12	21.027	240	1086461	20.000	ng/ul	0.00
88) Perylene-d12	23.745	264	1358367	20.000	ng/ul	0.00
System Monitoring Compounds						
3) 1,4-Dioxane-d8	3.005	96	18856	3.382	ng/uL	0.00
4) Pyridine-d5	3.393	84	236548	14.275	ng/ul	0.00
7) Phenol-d5	6.587	99	311588	15.433	ng/ul	0.00
9) Bis-(2-Chloroethyl)eth...	6.746	67	193116	15.417	ng/ul	0.00
11) 2-Chlorophenol-d4	6.928	132	267025	16.802	ng/ul	0.00
15) 4-Methylphenol-d8	8.105	113	258598	15.566	ng/ul	0.00
21) Nitrobenzene-d5	8.528	128	127184	17.736	ng/ul	0.00
24) 2-Nitrophenol-d4	9.240	143	125169	16.975	ng/ul	0.00
28) 2,4-Dichlorophenol-d3	9.781	165	230024	16.564	ng/ul	0.00
31) 4-Chloroaniline-d4	10.293	131	342784	16.304	ng/ul	0.00
46) Dimethylphthalate-d6	13.469	166	759369	17.966	ng/ul	0.00
49) Acenaphthylene-d8	13.728	160	911083	19.161	ng/ul	0.00
54) 4-Nitrophenol-d4	14.281	143	45784	5.278	ng/ul	0.00
60) Fluorene-d10	15.045	176	673877	18.812	ng/ul	0.00
65) 4,6-Dinitro-2-methylph...	15.175	200	33543	5.052	ng/ul	0.00
73) Anthracene-d10	16.898	188	1041137	19.885	ng/ul	0.00
81) Pyrene-d10	19.204	212	1189327	19.647	ng/ul	0.00
92) Benzo(a)pyrene-d12	23.557	264	1393655	19.973	ng/ul	0.00
Target Compounds						
30) Naphthalene	10.193	128	300800	6.113	ng/ul	97
36) 2-Methylnaphthalene	11.816	142	593559	17.510	ng/ul	97
37) 1-Methylnaphthalene	12.040	142	379013	11.046	ng/ul	100
43) 1,1'-Biphenyl	12.863	154	75861	1.779	ng/ul	96
58) 2,3,4,6-Tetrachlorophenol	14.687	232	956362	96.936	ng/ul	88
61) Fluorene	15.098	166	60946	1.467	ng/ul#	94
71) Pentachlorophenol	16.469	266	3332097	381.155	ng/ul	95
72) Phenanthrene	16.839	178	328400	5.348	ng/ul#	96

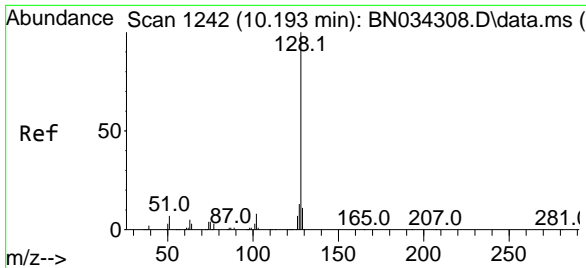
(#) = qualifier out of range (m) = manual integration (+) = signals summed

Data Path : Z:\svoasrv\HPCHEM1\BNA_N\Data\BN100124\
 Data File : BN034310.D
 Acq On : 01 Oct 2024 20:29
 Operator : RC/JU
 Sample : P4019-01
 Misc :
 ALS Vial : 18 Sample Multiplier: 1

Instrument :
 BNA_N
 ClientSampleId :
 DDC37

Quant Time: Oct 02 00:11:57 2024
 Quant Method : Z:\svoasrv\HPCHEM1\BNA_N\Methods\SFAM-EPA-BN091124.MA.M
 Quant Title : SVOA CALIBRATION
 QLast Update : Mon Sep 30 14:14:38 2024
 Response via : Initial Calibration



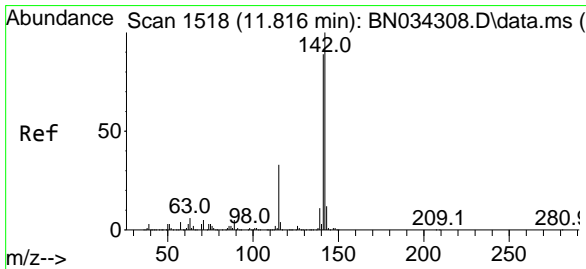
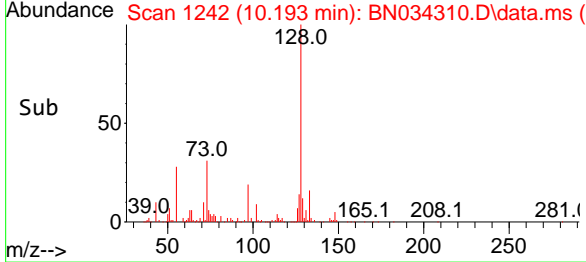
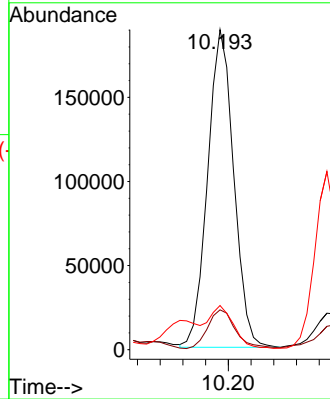
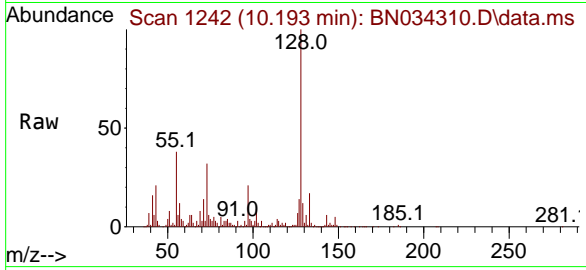


#30
 Naphthalene
 Concen: 6.113 ng/u1
 RT: 10.193 min Scan# 11
 Delta R.T. 0.000 min
 Lab File: BN034310.D
 Acq: 01 Oct 2024 20:29

Instrument :
 BNA_N
 ClientSampleId :
 DDC37

Tgt Ion:128 Resp: 300800

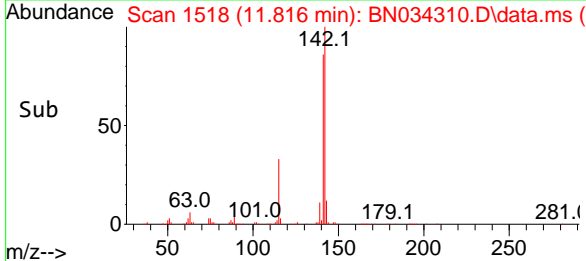
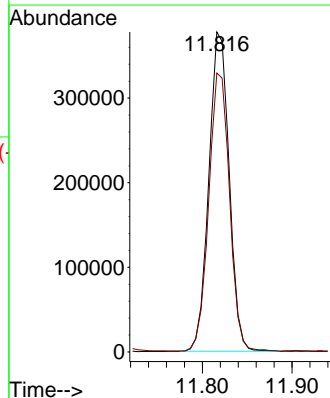
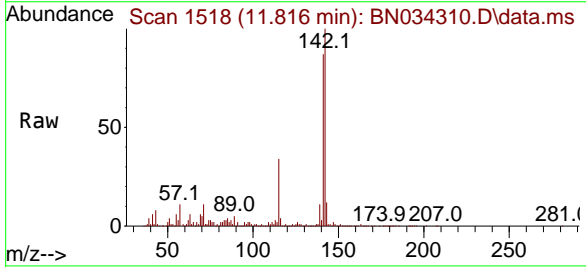
Ion	Ratio	Lower	Upper
128	100		
129	12.5	8.7	13.1
127	13.8	10.6	16.0

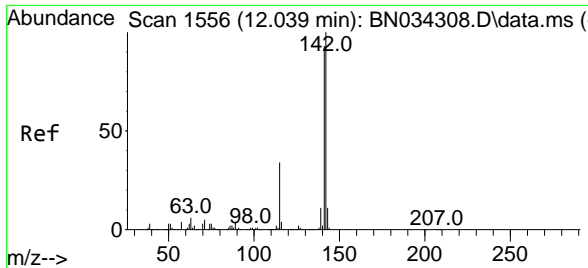


#36
 2-Methylnaphthalene
 Concen: 17.510 ng/u1
 RT: 11.816 min Scan# 1518
 Delta R.T. 0.000 min
 Lab File: BN034310.D
 Acq: 01 Oct 2024 20:29

Tgt Ion:142 Resp: 593559

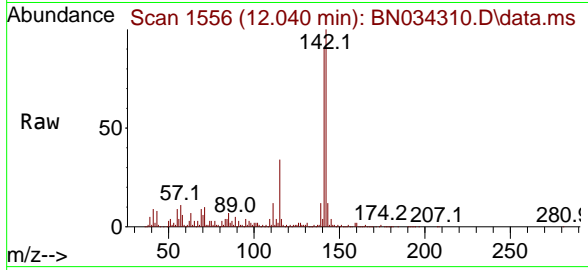
Ion	Ratio	Lower	Upper
142	100		
141	87.2	72.2	108.2





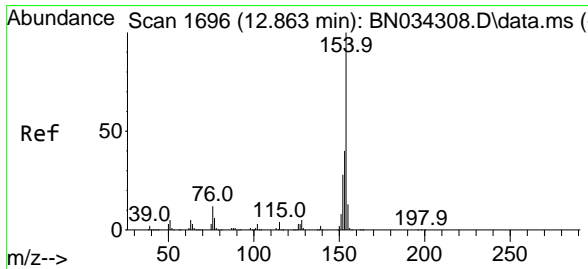
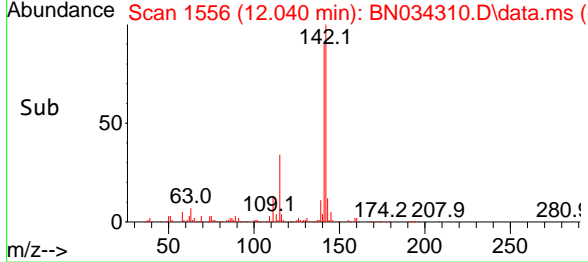
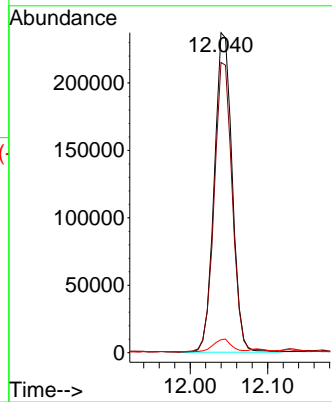
#37
 1-Methylnaphthalene
 Concen: 11.046 ng/ul
 RT: 12.040 min Scan# 1556
 Delta R.T. 0.000 min
 Lab File: BN034310.D
 Acq: 01 Oct 2024 20:29

Instrument : BNA_N
 ClientSampleId : DDC37

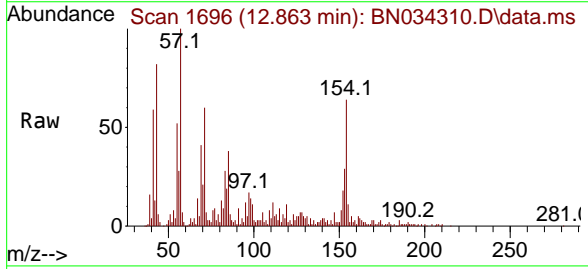


Tgt Ion:142 Resp: 379013

Ion	Ratio	Lower	Upper
142	100		
141	90.7	72.5	108.7
116	4.1	3.2	4.8

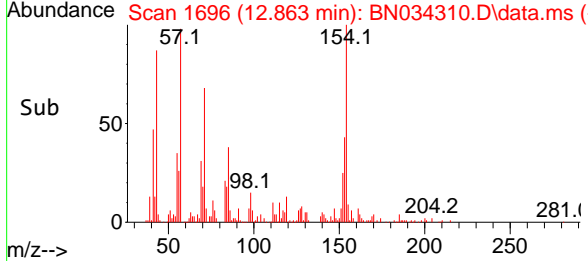
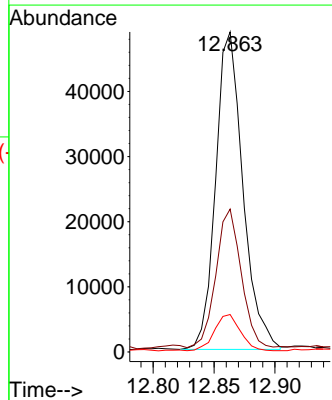


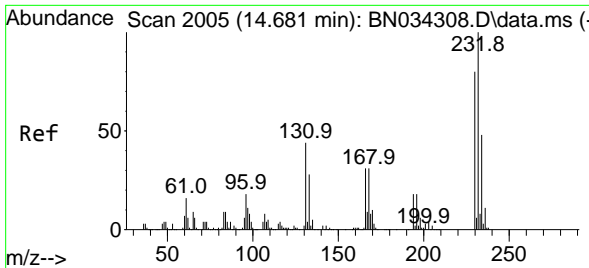
#43
 1,1'-Biphenyl
 Concen: 1.779 ng/ul
 RT: 12.863 min Scan# 1696
 Delta R.T. 0.000 min
 Lab File: BN034310.D
 Acq: 01 Oct 2024 20:29



Tgt Ion:154 Resp: 75861

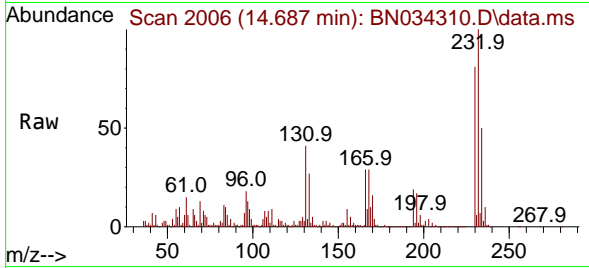
Ion	Ratio	Lower	Upper
154	100		
153	44.7	33.3	49.9
76	11.7	10.2	15.4



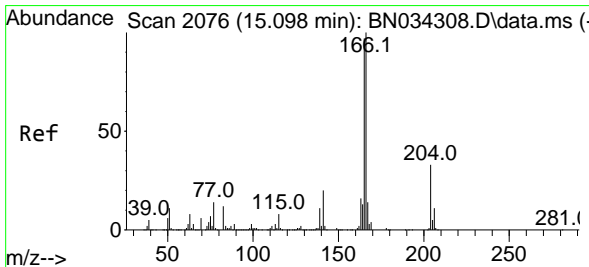
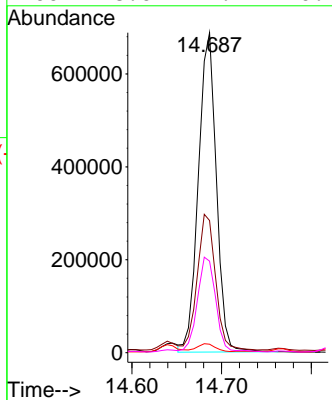
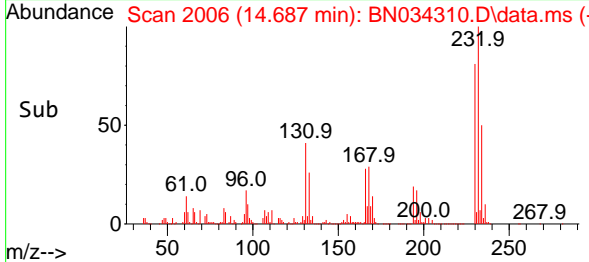


#58
 2,3,4,6-Tetrachlorophenol
 Concen: 96.936 ng/ul
 RT: 14.687 min Scan# 2006
 Delta R.T. 0.006 min
 Lab File: BN034310.D
 Acq: 01 Oct 2024 20:29

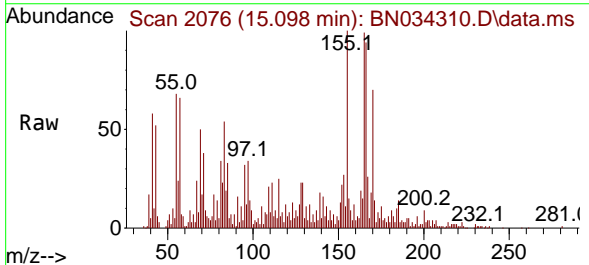
Instrument : BNA_N
 ClientSampleId : DDC37



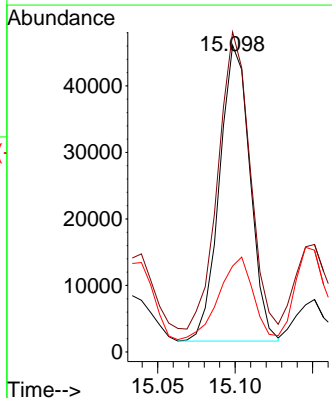
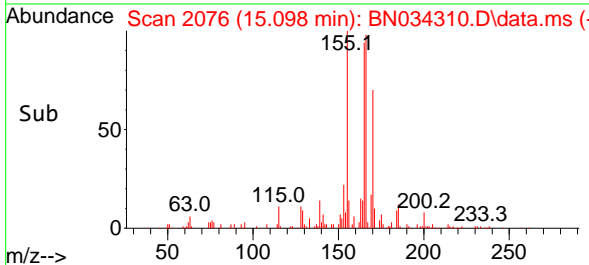
Tgt Ion:232 Resp: 956362
 Ion Ratio Lower Upper
 232 100
 131 41.3 41.0 61.6
 130 2.7 2.2 3.2
 166 28.6 27.1 40.7

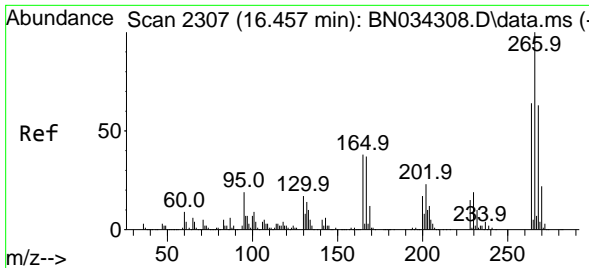


#61
 Fluorene
 Concen: 1.467 ng/ul
 RT: 15.098 min Scan# 2076
 Delta R.T. 0.000 min
 Lab File: BN034310.D
 Acq: 01 Oct 2024 20:29



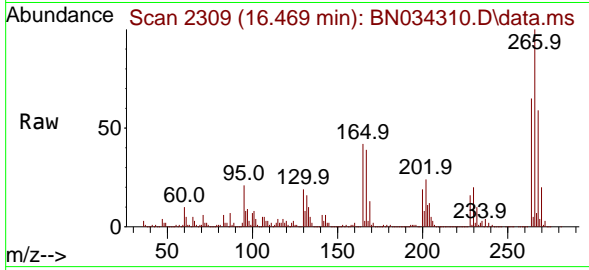
Tgt Ion:166 Resp: 60946
 Ion Ratio Lower Upper
 166 100
 165 104.3 81.9 122.9
 167 28.0 10.9 16.3#



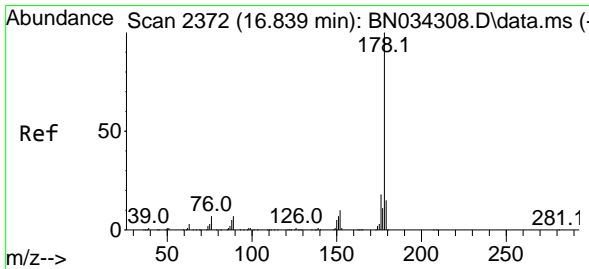
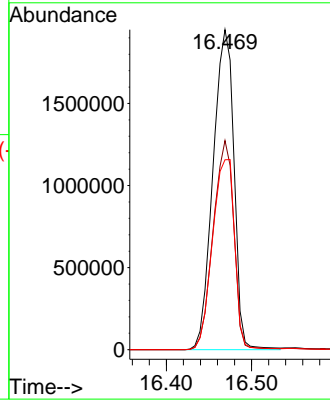
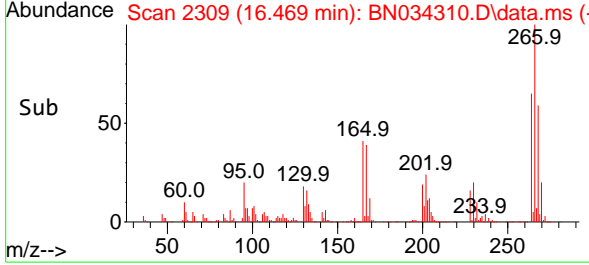


#71
 Pentachlorophenol
 Concen: 381.155 ng/uI
 RT: 16.469 min Scan# 2309
 Delta R.T. 0.012 min
 Lab File: BN034310.D
 Acq: 01 Oct 2024 20:29

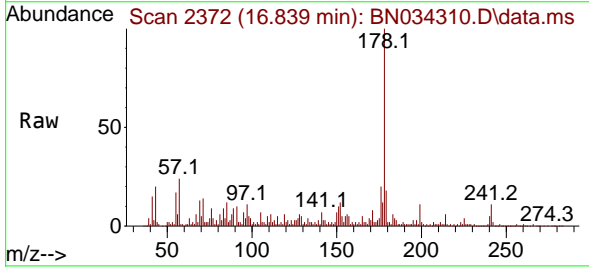
Instrument :
 BNA_N
 ClientSampleId :
 DDC37



Tgt Ion:266 Resp: 3332097
 Ion Ratio Lower Upper
 266 100
 264 65.3 51.1 76.7
 268 59.4 52.8 79.2



#72
 Phenanthrene
 Concen: 5.348 ng/uI
 RT: 16.839 min Scan# 2372
 Delta R.T. 0.000 min
 Lab File: BN034310.D
 Acq: 01 Oct 2024 20:29



Tgt Ion:178 Resp: 328400
 Ion Ratio Lower Upper
 178 100
 179 18.2 11.9 17.9#
 176 19.8 15.2 22.8

