

Data Path : Z:\svoasrv\HPCHEM1\BNA_N\Data\BN100124\
 Data File : BN034318.D
 Acq On : 02 Oct 2024 01:44
 Operator : RC/JU
 Sample : P4019-12
 Misc :
 ALS Vial : 26 Sample Multiplier: 1

Instrument :
 BNA_N
ClientSampleId :
 DDCE8

Manual Integrations
APPROVED
 Reviewed By :Yogesh Patel 10/02/2024
 Supervised By :mohammad ahmed 10/04/2024

Quant Time: Oct 02 02:43:01 2024
 Quant Method : Z:\svoasrv\HPCHEM1\BNA_N\Methods\SFAM-EPA-BN091124.MA.M
 Quant Title : SVOA CALIBRATION
 QLast Update : Mon Sep 30 14:14:38 2024
 Response via : Initial Calibration

Compound	R.T.	QIon	Response	Conc	Units	Dev(Min)
Internal Standards						
1) 1,4-Dichlorobenzene-d4	7.387	152	230952	20.000	ng/u1	0.00
20) Naphthalene-d8	10.139	136	922954	20.000	ng/u1	0.00
38) Acenaphthene-d10	14.039	164	573425	20.000	ng/u1	0.00
64) Phenanthrene-d10	16.798	188	1140575	20.000	ng/u1	0.00
79) Chrysene-d12	21.027	240	1131997	20.000	ng/u1	0.00
88) Perylene-d12	23.739	264	1335262	20.000	ng/u1	0.00
System Monitoring Compounds						
3) 1,4-Dioxane-d8	3.005	96	13310	2.352	ng/uL	0.00
4) Pyridine-d5	3.393	84	172789	10.271	ng/u1	0.00
7) Phenol-d5	6.587	99	265070	12.932	ng/u1	0.00
9) Bis-(2-Chloroethyl)eth...	6.740	67	162205	12.755	ng/u1	0.00
11) 2-Chlorophenol-d4	6.928	132	233675	14.483	ng/u1	0.00
15) 4-Methylphenol-d8	8.104	113	235758	13.979	ng/u1	0.00
21) Nitrobenzene-d5	8.528	128	115554	15.708	ng/u1	0.00
24) 2-Nitrophenol-d4	9.240	143	123050	16.266	ng/u1	0.00
28) 2,4-Dichlorophenol-d3	9.775	165	234051	16.429	ng/u1	0.00
31) 4-Chloroaniline-d4	10.292	131	349698	16.214	ng/u1	0.00
46) Dimethylphthalate-d6	13.463	166	851860	19.878	ng/u1	0.00
49) Acenaphthylene-d8	13.728	160	964401	20.004	ng/u1	0.00
54) 4-Nitrophenol-d4	14.275	143	102771m	11.685	ng/u1	0.00
60) Fluorene-d10	15.045	176	749502	20.637	ng/u1	0.00
65) 4,6-Dinitro-2-methylph...	15.175	200	94716	13.928	ng/u1	0.00
73) Anthracene-d10	16.892	188	1178671	21.980	ng/u1	0.00
81) Pyrene-d10	19.204	212	1417852	22.480	ng/u1	0.00
92) Benzo(a)pyrene-d12	23.551	264	1587575	23.146	ng/u1	0.00
Target Compounds						
71) Pentachlorophenol	16.457	266	11089m	1.239	ng/u1	Qvalue

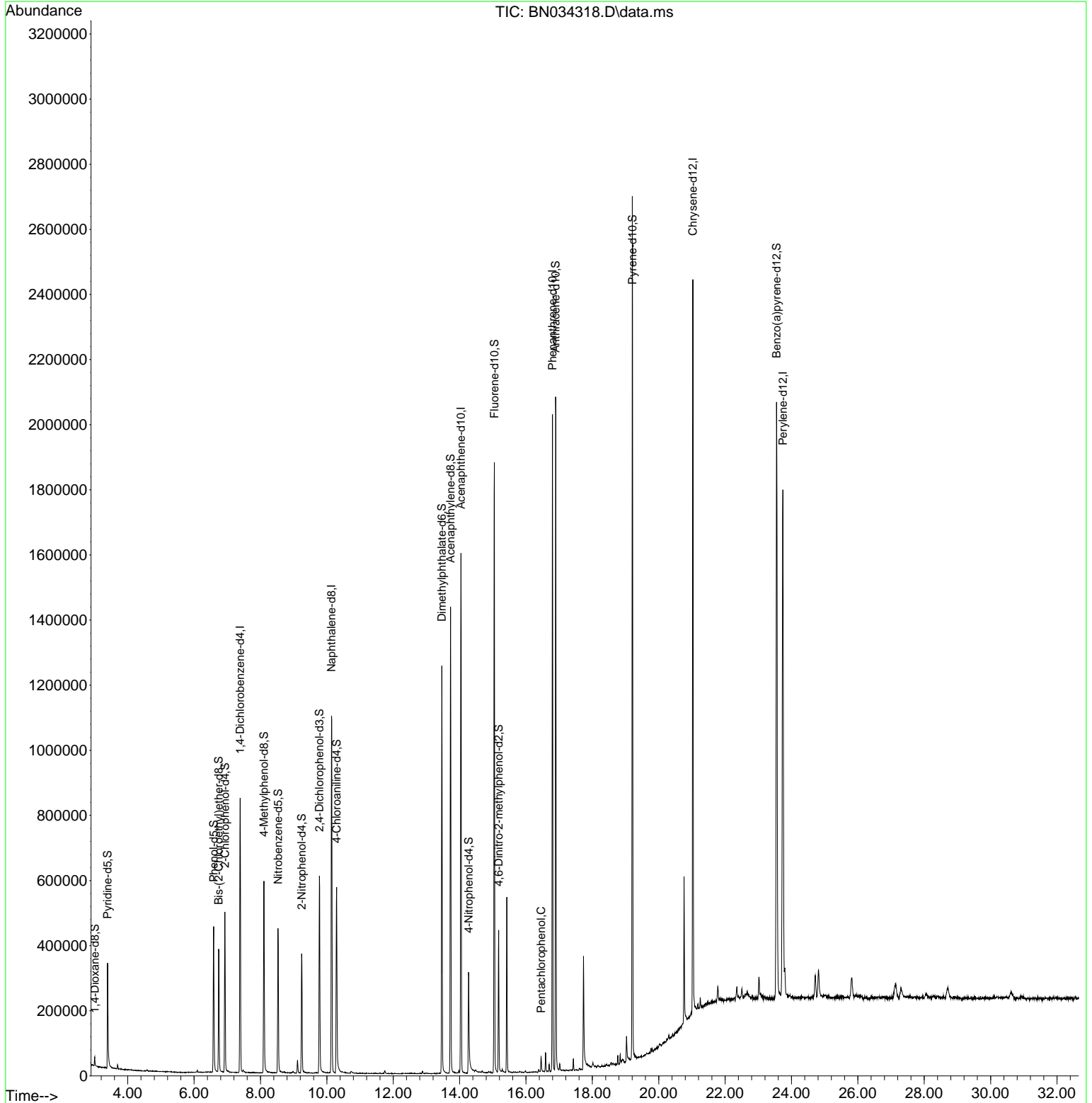
(#) = qualifier out of range (m) = manual integration (+) = signals summed

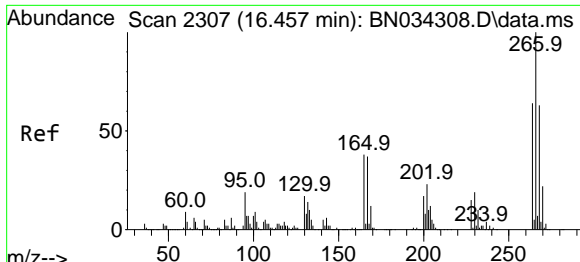
Data Path : Z:\svoasrv\HPCHEM1\BNA_N\Data\BN100124\
 Data File : BN034318.D
 Acq On : 02 Oct 2024 01:44
 Operator : RC/JU
 Sample : P4019-12
 Misc :
 ALS Vial : 26 Sample Multiplier: 1

Instrument :
 BNA_N
ClientSampleId :
 DDCE8

Quant Time: Oct 02 02:43:01 2024
 Quant Method : Z:\svoasrv\HPCHEM1\BNA_N\Methods\SFAM-EPA-BN091124.MA.M
 Quant Title : SVOA CALIBRATION
 QLast Update : Mon Sep 30 14:14:38 2024
 Response via : Initial Calibration

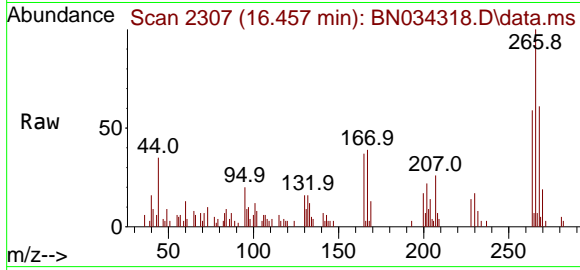
Manual Integrations
APPROVED
 Reviewed By :Yogesh Patel 10/02/2024
 Supervised By :mohammad ahmed 10/04/2024





#71
 Pentachlorophenol
 Concen: 1.239 ng/ul m
 RT: 16.457 min Scan# 2
 Delta R.T. -0.000 min
 Lab File: BN034318.D
 Acq: 02 Oct 2024 01:44

Instrument :
 BNA_N
 ClientSampleId :
 DDCE8



Tgt Ion: 266 Resp: 11089

Ion	Ratio	Lower	Upper
266	100		
264	59.0	51.1	76.7
268	60.8	52.8	79.2

Manual Integrations
APPROVED
 Reviewed By :Yogesh Patel 10/02/2024
 Supervised By :mohammad ahmed 10/04/2024

