

Data Path : Z:\svoasrv\HPCHEM1\BNA_N\Data\BN100124\
 Data File : BN034319.D
 Acq On : 02 Oct 2024 02:23
 Operator : RC/JU
 Sample : P4019-16
 Misc :
 ALS Vial : 27 Sample Multiplier: 1

Instrument :
 BNA_N
ClientSampleId :
 DDCF0

Manual Integrations
APPROVED
 Reviewed By :Yogesh Patel 10/02/2024
 Supervised By :mohammad ahmed 10/04/2024

Quant Time: Oct 02 03:09:01 2024
 Quant Method : Z:\svoasrv\HPCHEM1\BNA_N\Methods\SFAM-EPA-BN091124.MA.M
 Quant Title : SVOA CALIBRATION
 QLast Update : Mon Sep 30 14:14:38 2024
 Response via : Initial Calibration

Compound	R.T.	QIon	Response	Conc	Units	Dev(Min)
Internal Standards						
1) 1,4-Dichlorobenzene-d4	7.387	152	258807	20.000	ng/u1	0.00
20) Naphthalene-d8	10.145	136	1000676	20.000	ng/u1	0.00
38) Acenaphthene-d10	14.039	164	597861	20.000	ng/u1	0.00
64) Phenanthrene-d10	16.798	188	1144242	20.000	ng/u1	0.00
79) Chrysene-d12	21.027	240	1103130	20.000	ng/u1	0.00
88) Perylene-d12	23.739	264	1372158	20.000	ng/u1	0.00
System Monitoring Compounds						
3) 1,4-Dioxane-d8	3.005	96	20054	3.162	ng/uL	0.00
4) Pyridine-d5	3.399	84	83398	4.424	ng/u1	0.01
7) Phenol-d5	6.587	99	370811	16.144	ng/u1	0.00
9) Bis-(2-Chloroethyl)eth...	6.740	67	218355	15.322	ng/u1	0.00
11) 2-Chlorophenol-d4	6.928	132	324479	17.947	ng/u1	0.00
15) 4-Methylphenol-d8	8.104	113	304887	16.132	ng/u1	0.00
21) Nitrobenzene-d5	8.528	128	148208	18.582	ng/u1	0.00
24) 2-Nitrophenol-d4	9.240	143	158492	19.324	ng/u1	0.00
28) 2,4-Dichlorophenol-d3	9.775	165	287581	18.618	ng/u1	0.00
31) 4-Chloroaniline-d4	10.293	131	373237	15.961	ng/u1	0.00
46) Dimethylphthalate-d6	13.469	166	854793	19.131	ng/u1	0.00
49) Acenaphthylene-d8	13.728	160	1021937	20.331	ng/u1	0.00
54) 4-Nitrophenol-d4	14.275	143	91323	9.959	ng/u1	0.00
60) Fluorene-d10	15.045	176	748972	19.779	ng/u1	0.00
65) 4,6-Dinitro-2-methylph...	15.175	200	80943	11.864	ng/u1	0.00
73) Anthracene-d10	16.898	188	1113801	20.704	ng/u1	0.00
81) Pyrene-d10	19.204	212	1309901	21.312	ng/u1	0.00
92) Benzo(a)pyrene-d12	23.557	264	1478545	20.977	ng/u1	0.00
Target Compounds						
71) Pentachlorophenol	16.451	266	40842m	4.547	ng/u1	Qvalue

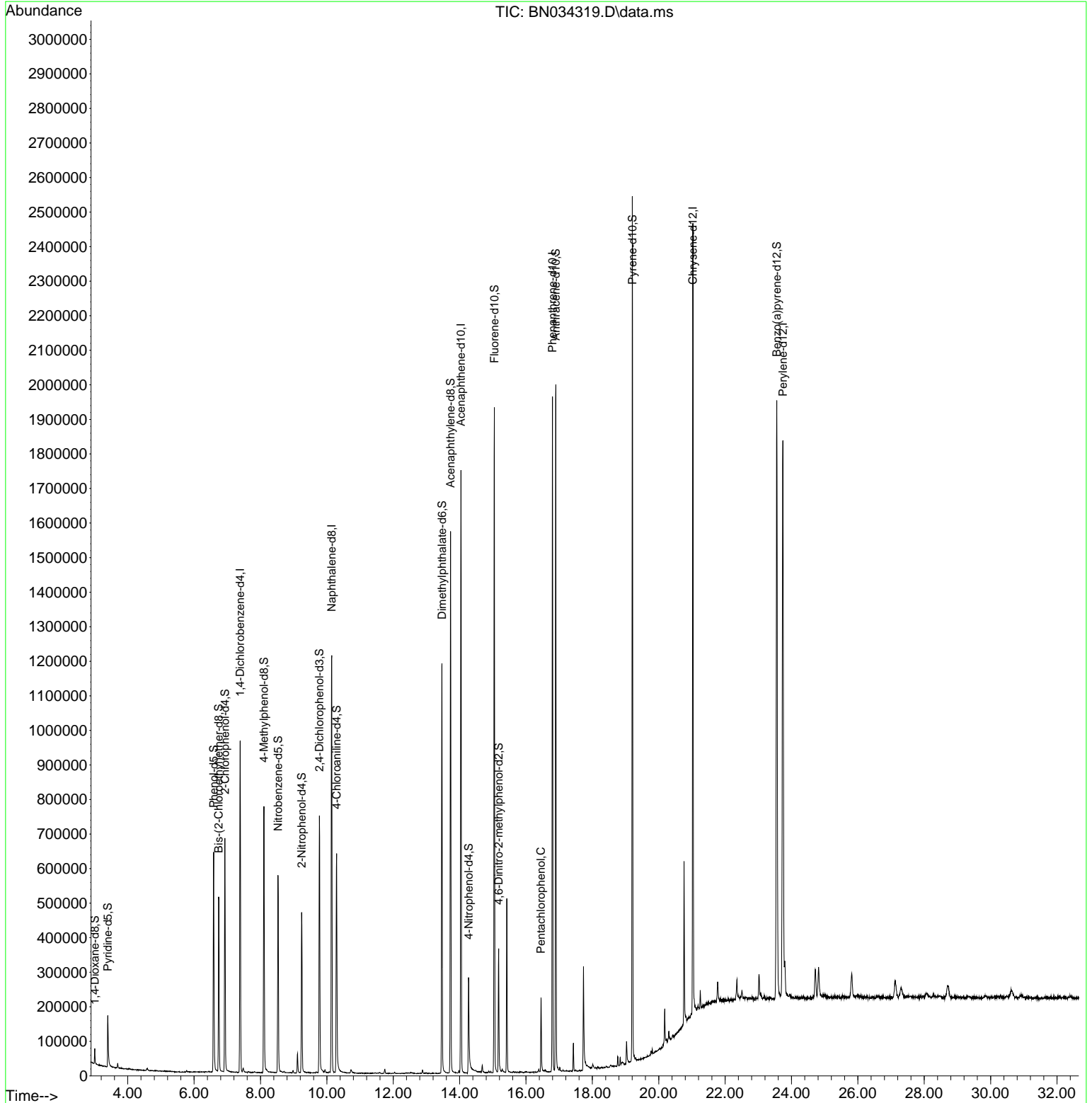
(#) = qualifier out of range (m) = manual integration (+) = signals summed

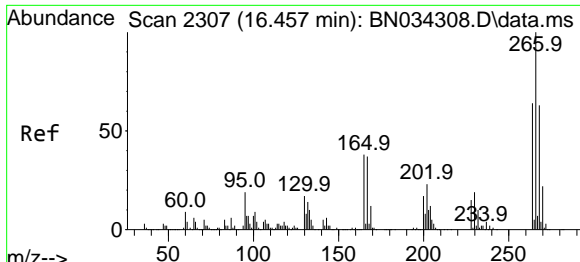
Data Path : Z:\svoasrv\HPCHEM1\BNA_N\Data\BN100124\
 Data File : BN034319.D
 Acq On : 02 Oct 2024 02:23
 Operator : RC/JU
 Sample : P4019-16
 Misc :
 ALS Vial : 27 Sample Multiplier: 1

Instrument :
 BNA_N
ClientSampleId :
 DDCF0

Quant Time: Oct 02 03:09:01 2024
 Quant Method : Z:\svoasrv\HPCHEM1\BNA_N\Methods\SFAM-EPA-BN091124.MA.M
 Quant Title : SVOA CALIBRATION
 QLast Update : Mon Sep 30 14:14:38 2024
 Response via : Initial Calibration

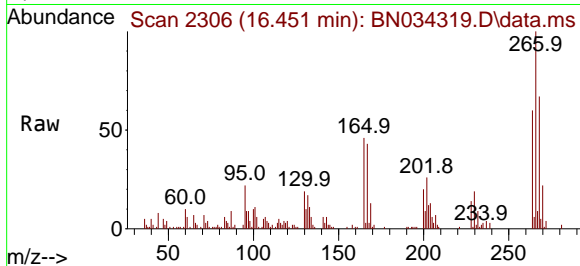
Manual Integrations
APPROVED
 Reviewed By :Yogesh Patel 10/02/2024
 Supervised By :mohammad ahmed 10/04/2024





#71
 Pentachlorophenol
 Concen: 4.547 ng/ul m
 RT: 16.451 min Scan# 2
 Delta R.T. -0.006 min
 Lab File: BN034319.D
 Acq: 02 Oct 2024 02:23

Instrument :
 BNA_N
 ClientSampleId :
 DDCF0



Tgt Ion	Resp	Lower	Upper
266	4084		
266	100		
264	59.6	51.1	76.7
268	66.8	52.8	79.2

Manual Integrations
APPROVED

Reviewed By :Yogesh Patel 10/02/2024
 Supervised By :mohammad ahmed 10/04/2024

