

Data Path : Z:\svoasrv\HPCHEM1\BNA_N\Data\BN100124\
 Data File : BN034326.D
 Acq On : 02 Oct 2024 07:38
 Operator : RC/JU
 Sample : P4019-06DL 5X
 Misc :
 ALS Vial : 35 Sample Multiplier: 1

Instrument :
 BNA_N
 ClientSampleId :
 DDCA9DL

Quant Time: Oct 02 08:06:48 2024
 Quant Method : Z:\svoasrv\HPCHEM1\BNA_N\Methods\SFAM-EPA-BN091124.MA.M
 Quant Title : SVOA CALIBRATION
 QLast Update : Mon Sep 30 14:14:38 2024
 Response via : Initial Calibration

Compound	R.T.	QIon	Response	Conc	Units	Dev(Min)

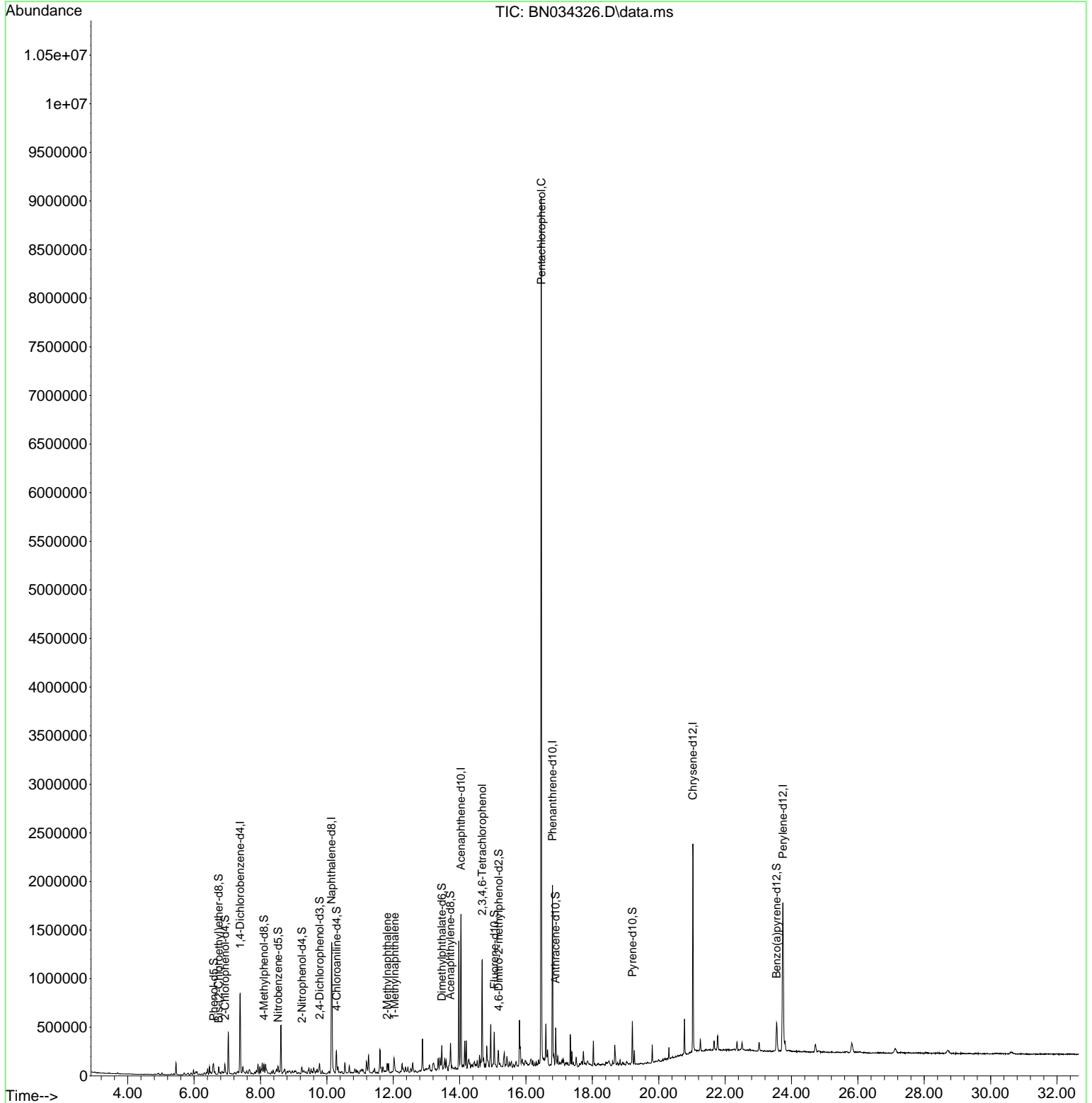
Internal Standards						
1) 1,4-Dichlorobenzene-d4	7.387	152	220019	20.000	ng/u1	0.00
20) Naphthalene-d8	10.140	136	869295	20.000	ng/u1	0.00
38) Acenaphthene-d10	14.040	164	540887	20.000	ng/u1	0.00
64) Phenanthrene-d10	16.798	188	1069736	20.000	ng/u1	0.00
79) Chrysene-d12	21.027	240	1062307	20.000	ng/u1	0.00
88) Perylene-d12	23.739	264	1321523	20.000	ng/u1	0.00
System Monitoring Compounds						
3) 1,4-Dioxane-d8	3.005	96	3932	0.729	ng/uL	0.00
4) Pyridine-d5	0.000	84	0d	0.000	ng/u1	
7) Phenol-d5	6.587	99	52384	2.683	ng/u1	0.00
9) Bis-(2-Chloroethyl)eth...	6.740	67	34177	2.821	ng/u1	0.00
11) 2-Chlorophenol-d4	6.928	132	47229	3.073	ng/u1	0.00
15) 4-Methylphenol-d8	8.105	113	41744	2.598	ng/u1	0.00
21) Nitrobenzene-d5	8.528	128	21311	3.076	ng/u1	0.00
24) 2-Nitrophenol-d4	9.246	143	20495	2.877	ng/u1	0.00
28) 2,4-Dichlorophenol-d3	9.781	165	42078	3.136	ng/u1	0.00
31) 4-Chloroaniline-d4	10.293	131	47692	2.348	ng/u1	0.00
46) Dimethylphthalate-d6	13.463	166	148951	3.685	ng/u1	0.00
49) Acenaphthylene-d8	13.722	160	167599	3.686	ng/u1	0.00
54) 4-Nitrophenol-d4	0.000	143	0d	0.000	ng/u1	
60) Fluorene-d10	15.045	176	131856	3.849	ng/u1	0.00
65) 4,6-Dinitro-2-methylph...	15.175	200	15262	2.393	ng/u1	0.00
73) Anthracene-d10	16.892	188	202863	4.034	ng/u1	0.00
81) Pyrene-d10	19.204	212	241787	4.085	ng/u1	0.00
92) Benzo(a)pyrene-d12	23.551	264	260625	3.839	ng/u1	0.00
Target Compounds						
36) 2-Methylnaphthalene	11.816	142	44452	1.357	ng/u1	97
37) 1-Methylnaphthalene	12.040	142	34052	1.027	ng/u1	97
58) 2,3,4,6-Tetrachlorophenol	14.681	232	215049	22.791	ng/u1	90
71) Pentachlorophenol	16.463	266	1695207	201.875	ng/u1	98

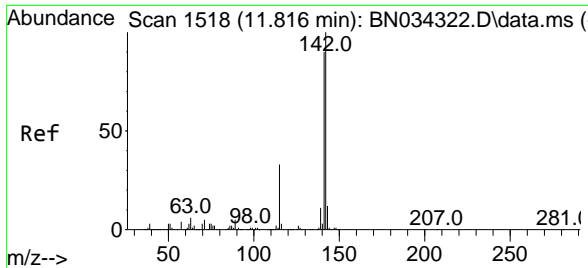
(#) = qualifier out of range (m) = manual integration (+) = signals summed

Data Path : Z:\svoasrv\HPCHEM1\BNA_N\Data\BN100124\
 Data File : BN034326.D
 Acq On : 02 Oct 2024 07:38
 Operator : RC/JU
 Sample : P4019-06DL 5X
 Misc :
 ALS Vial : 35 Sample Multiplier: 1

Instrument :
 BNA_N
 ClientSampleId :
 DDCA9DL

Quant Time: Oct 02 08:06:48 2024
 Quant Method : Z:\svoasrv\HPCHEM1\BNA_N\Methods\SFAM-EPA-BN091124.MA.M
 Quant Title : SVOA CALIBRATION
 QLast Update : Mon Sep 30 14:14:38 2024
 Response via : Initial Calibration

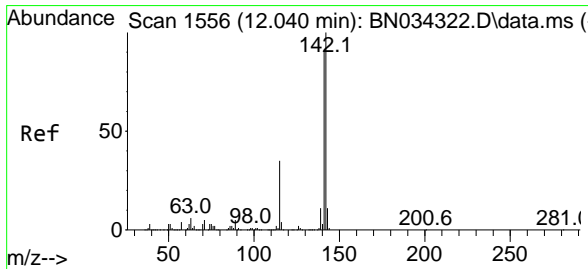
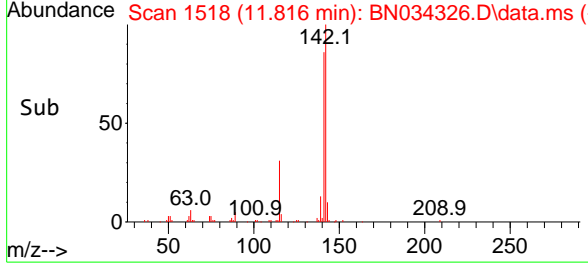
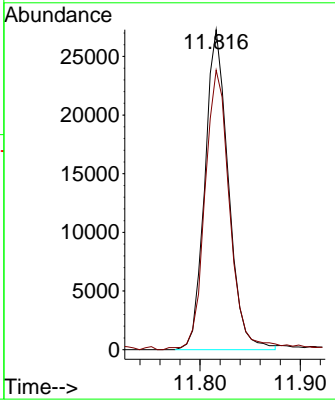
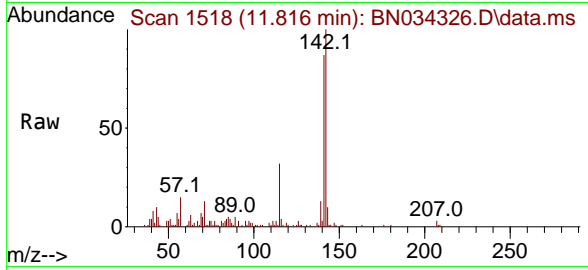




#36
 2-Methylnaphthalene
 Concen: 1.357 ng/ul
 RT: 11.816 min Scan# 1518
 Delta R.T. -0.000 min
 Lab File: BN034326.D
 Acq: 02 Oct 2024 07:38

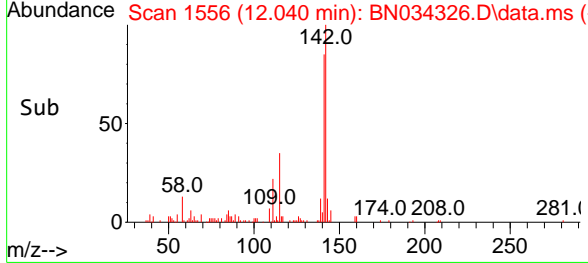
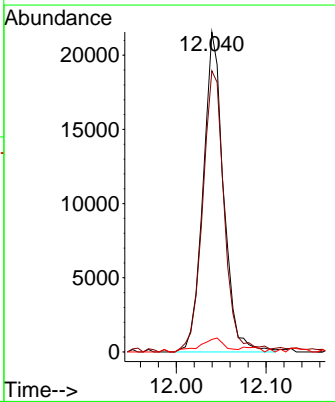
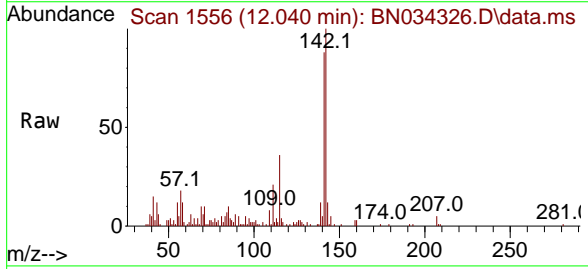
Instrument : BNA_N
 ClientSampleId : DDCA9DL

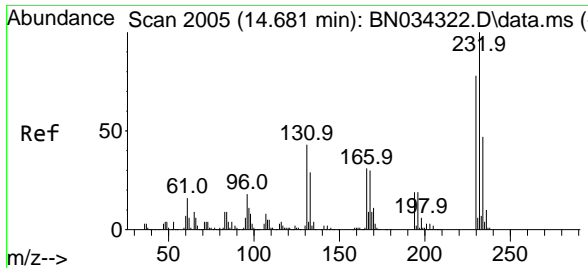
Tgt Ion:142 Resp: 44452
 Ion Ratio Lower Upper
 142 100
 141 87.4 72.2 108.2



#37
 1-Methylnaphthalene
 Concen: 1.027 ng/ul
 RT: 12.040 min Scan# 1556
 Delta R.T. -0.000 min
 Lab File: BN034326.D
 Acq: 02 Oct 2024 07:38

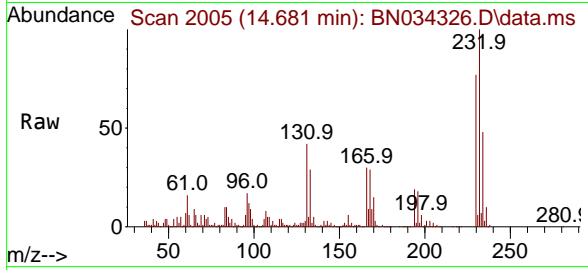
Tgt Ion:142 Resp: 34052
 Ion Ratio Lower Upper
 142 100
 141 87.9 72.5 108.7
 116 3.9 3.2 4.8





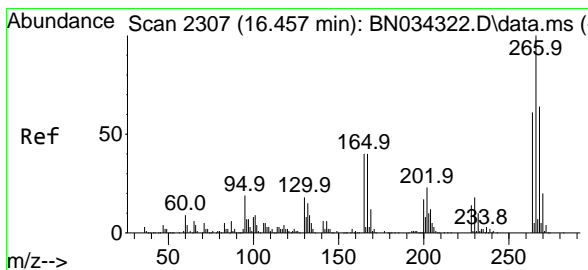
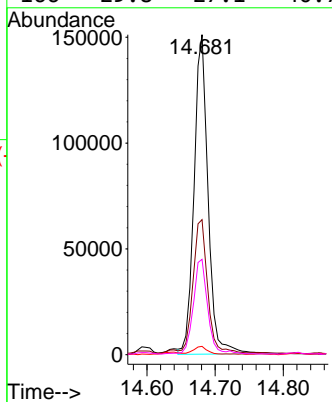
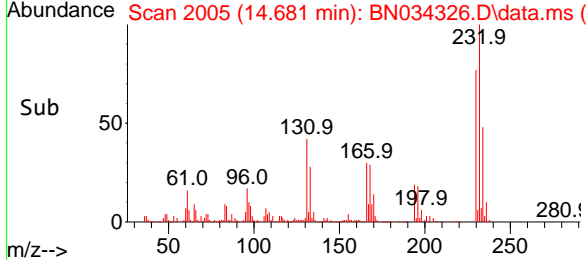
#58
 2,3,4,6-Tetrachlorophenol
 Concen: 22.791 ng/ul
 RT: 14.681 min Scan# 2005
 Delta R.T. -0.000 min
 Lab File: BN034326.D
 Acq: 02 Oct 2024 07:38

Instrument : BNA_N
 ClientSampleId : DDCA9DL

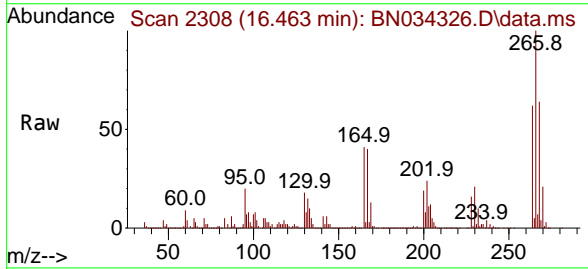


Tgt Ion:232 Resp: 215049

Ion	Ratio	Lower	Upper
232	100		
131	42.2	41.0	61.6
130	2.6	2.2	3.2
166	29.8	27.1	40.7



#71
 Pentachlorophenol
 Concen: 201.875 ng/ul
 RT: 16.463 min Scan# 2308
 Delta R.T. 0.006 min
 Lab File: BN034326.D
 Acq: 02 Oct 2024 07:38



Tgt Ion:266 Resp: 1695207

Ion	Ratio	Lower	Upper
266	100		
264	62.0	51.1	76.7
268	64.0	52.8	79.2

