

Data Path : Z:\svoasrv\HPCHEM1\BNA_N\Data\BN100124\
 Data File : BN034327.D
 Acq On : 02 Oct 2024 08:17
 Operator : RC/JU
 Sample : P4019-02DL 10X
 Misc :
 ALS Vial : 36 Sample Multiplier: 1

Instrument :
 BNA_N
ClientSampleId :
 DDC38DL

Manual Integrations
APPROVED
 Reviewed By :Yogesh Patel 10/04/2024
 Supervised By :mohammad ahmed 10/04/2024

Quant Time: Oct 02 08:48:19 2024
 Quant Method : Z:\svoasrv\HPCHEM1\BNA_N\Methods\SFAM-EPA-BN091124.MA.M
 Quant Title : SVOA CALIBRATION
 QLast Update : Mon Sep 30 14:14:38 2024
 Response via : Initial Calibration

Compound	R.T.	QIon	Response	Conc	Units	Dev(Min)
Internal Standards						
1) 1,4-Dichlorobenzene-d4	7.387	152	228053	20.000	ng/ul	0.00
20) Naphthalene-d8	10.140	136	902547	20.000	ng/ul	0.00
38) Acenaphthene-d10	14.039	164	562145	20.000	ng/ul	0.00
64) Phenanthrene-d10	16.798	188	1142867	20.000	ng/ul	0.00
79) Chrysene-d12	21.027	240	1104796	20.000	ng/ul	0.00
88) Perylene-d12	23.739	264	1328410	20.000	ng/ul	0.00
System Monitoring Compounds						
3) 1,4-Dioxane-d8	0.000	96	0d	0.000	ng/uL	
4) Pyridine-d5	0.000	84	0d	0.000	ng/ul	
7) Phenol-d5	0.000	99	0d	0.000	ng/ul	
9) Bis-(2-Chloroethyl)eth...	6.734	67	9889	0.787	ng/ul	0.00
11) 2-Chlorophenol-d4	6.928	132	5583	0.350	ng/ul	0.00
15) 4-Methylphenol-d8	0.000	113	0d	0.000	ng/ul	
21) Nitrobenzene-d5	8.534	128	4355	0.605	ng/ul	0.00
24) 2-Nitrophenol-d4	9.246	143	2923	0.395	ng/ul	0.00
28) 2,4-Dichlorophenol-d3	9.781	165	4229	0.304	ng/ul	0.00
31) 4-Chloroaniline-d4	10.263	131	30057	1.425	ng/ul	-0.03
46) Dimethylphthalate-d6	13.463	166	22291	0.531	ng/ul	0.00
49) Acenaphthylene-d8	13.722	160	23840	0.504	ng/ul	0.00
54) 4-Nitrophenol-d4	14.275	143	8654	1.004	ng/ul	0.00
60) Fluorene-d10	15.039	176	21416	0.601	ng/ul	0.00
65) 4,6-Dinitro-2-methylph...	0.000	200	0d	0.000	ng/ul	
73) Anthracene-d10	16.892	188	33988m	0.633	ng/ul	0.00
81) Pyrene-d10	19.204	212	30319	0.493	ng/ul	0.00
92) Benzo(a)pyrene-d12	23.551	264	19761	0.290	ng/ul	0.00
Target Compounds						
30) Naphthalene	10.193	128	182371	3.694	ng/ul	98
36) 2-Methylnaphthalene	11.816	142	265521	7.808	ng/ul	100
37) 1-Methylnaphthalene	12.040	142	156632	4.550	ng/ul	99
58) 2,3,4,6-Tetrachlorophenol	14.681	232	373194	38.056	ng/ul	90
71) Pentachlorophenol	16.475	266	4077606	454.513	ng/ul	98
72) Phenanthrene	16.839	178	97377	1.545	ng/ul	97

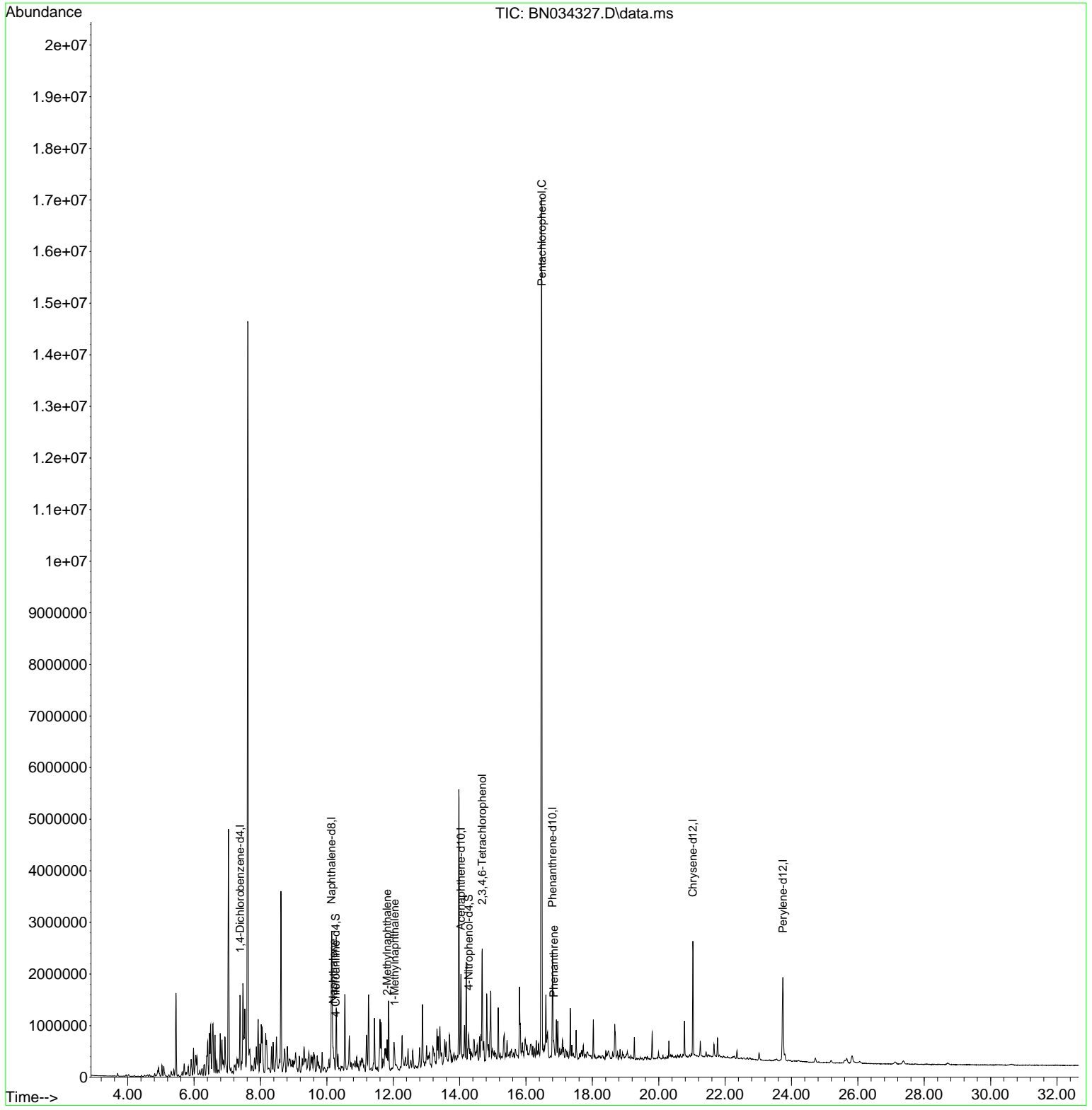
(#) = qualifier out of range (m) = manual integration (+) = signals summed

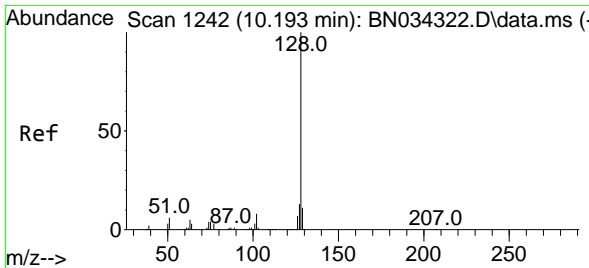
Data Path : Z:\svoasrv\HPCHEM1\BNA_N\Data\BN100124\
 Data File : BN034327.D
 Acq On : 02 Oct 2024 08:17
 Operator : RC/JU
 Sample : P4019-02DL 10X
 Misc :
 ALS Vial : 36 Sample Multiplier: 1

Instrument :
 BNA_N
ClientSampleId :
 DDC38DL

Quant Time: Oct 02 08:48:19 2024
 Quant Method : Z:\svoasrv\HPCHEM1\BNA_N\Methods\SFAM-EPA-BN091124.MA.M
 Quant Title : SVOA CALIBRATION
 QLast Update : Mon Sep 30 14:14:38 2024
 Response via : Initial Calibration

Manual Integrations
APPROVED
 Reviewed By :Yogesh Patel 10/04/2024
 Supervised By :mohammad ahmed 10/04/2024





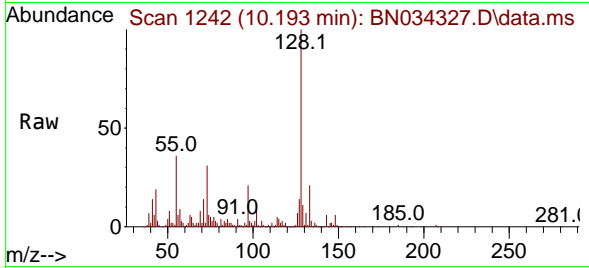
#30
 Naphthalene
 Concen: 3.694 ng/uI
 RT: 10.193 min Scan# 1242
 Delta R.T. -0.000 min
 Lab File: BN034327.D
 Acq: 02 Oct 2024 08:17

Instrument :

BNA_N

ClientSampleId :

DDC38DL

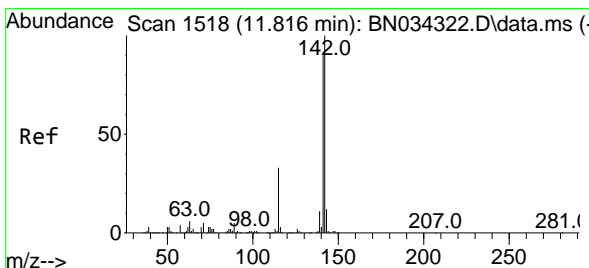
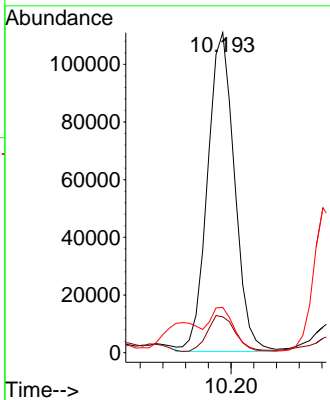
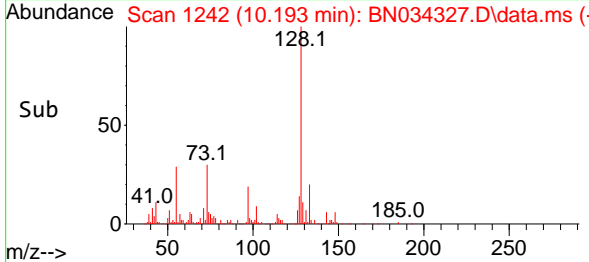


Tgt Ion:128 Resp: 18237
 Ion Ratio Lower Upper
 128 100
 129 11.2 8.7 13.1
 127 14.2 10.6 16.0

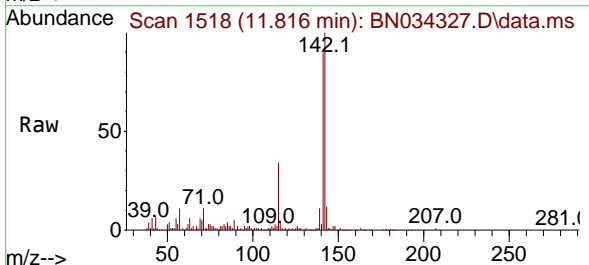
Manual Integrations

APPROVED

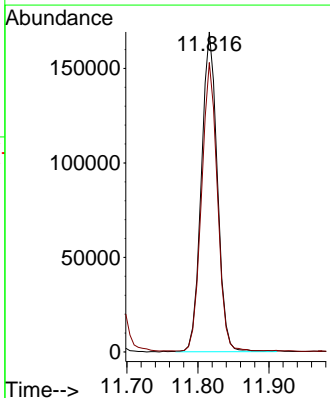
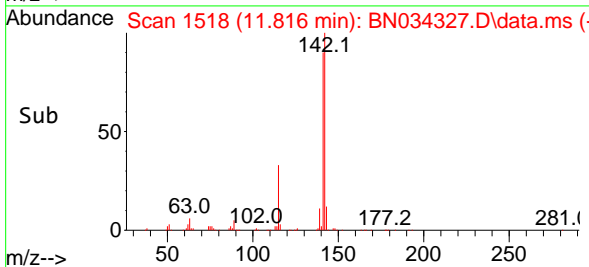
Reviewed By :Yogesh Patel 10/04/2024
 Supervised By :mohammad ahmed 10/04/2024

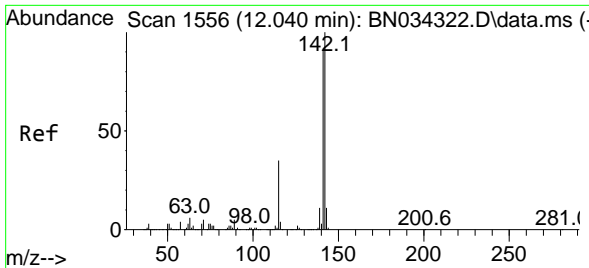


#36
 2-Methylnaphthalene
 Concen: 7.808 ng/uI
 RT: 11.816 min Scan# 1518
 Delta R.T. -0.000 min
 Lab File: BN034327.D
 Acq: 02 Oct 2024 08:17



Tgt Ion:142 Resp: 265521
 Ion Ratio Lower Upper
 142 100
 141 90.4 72.2 108.2





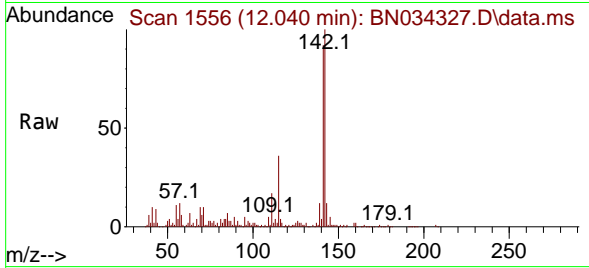
#37
 1-Methylnaphthalene
 Concen: 4.550 ng/ul
 RT: 12.040 min Scan# 1556
 Delta R.T. -0.000 min
 Lab File: BN034327.D
 Acq: 02 Oct 2024 08:17

Instrument :

BNA_N

ClientSampleId :

DDC38DL



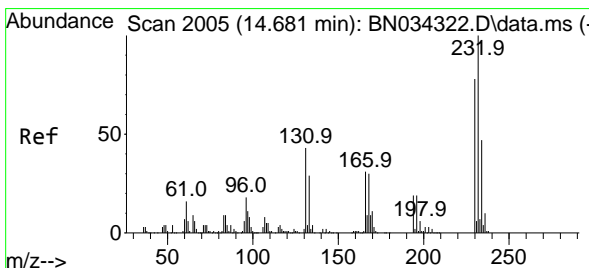
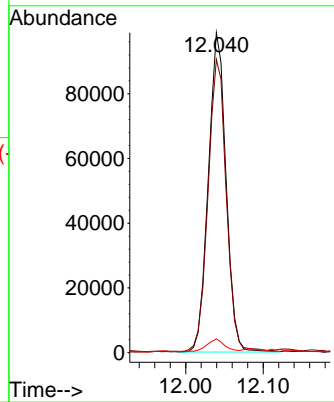
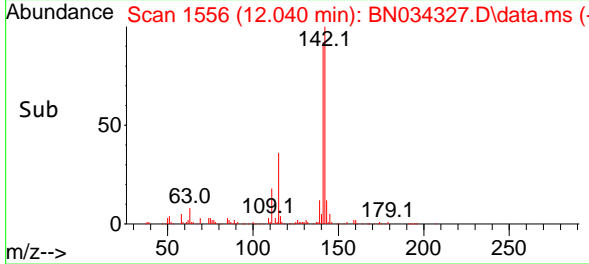
Tgt Ion:142 Resp: 15663
 Ion Ratio Lower Upper
 142 100
 141 91.6 72.5 108.7
 116 4.3 3.2 4.8

Manual Integrations

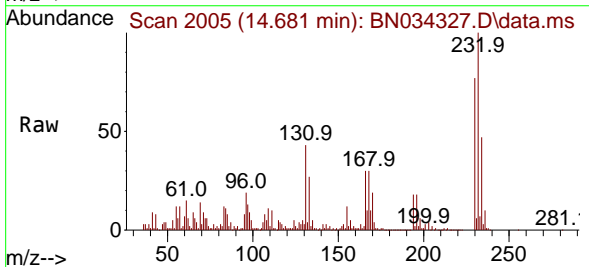
APPROVED

Reviewed By :Yogesh Patel 10/04/2024

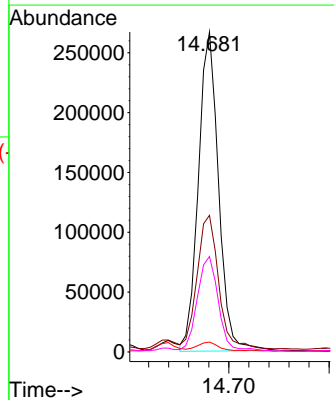
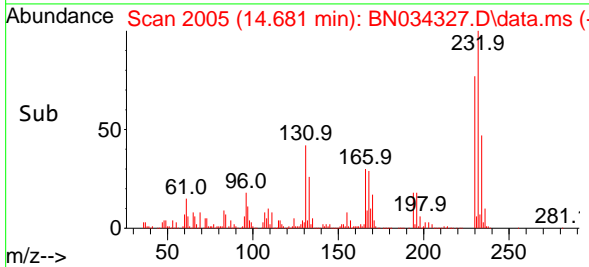
Supervised By :mohammad ahmed 10/04/2024

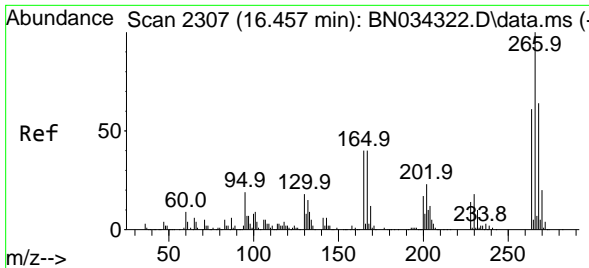


#58
 2,3,4,6-Tetrachlorophenol
 Concen: 38.056 ng/ul
 RT: 14.681 min Scan# 2005
 Delta R.T. -0.000 min
 Lab File: BN034327.D
 Acq: 02 Oct 2024 08:17



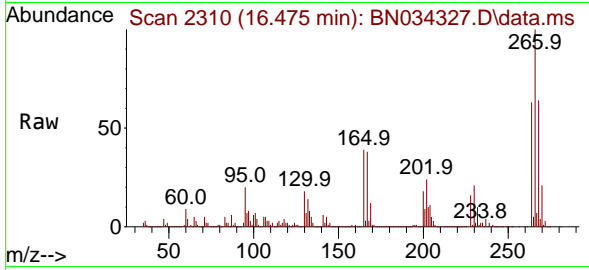
Tgt Ion:232 Resp: 373194
 Ion Ratio Lower Upper
 232 100
 131 42.7 41.0 61.6
 130 3.1 2.2 3.2
 166 29.8 27.1 40.7





#71
 Pentachlorophenol
 Concen: 454.513 ng/uI
 RT: 16.475 min Scan# 2310
 Delta R.T. 0.018 min
 Lab File: BN034327.D
 Acq: 02 Oct 2024 08:17

Instrument : BNA_N
 ClientSampleId : DDC38DL

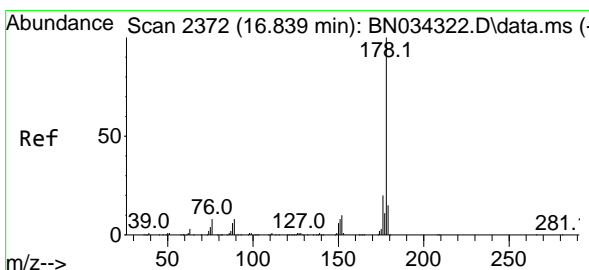
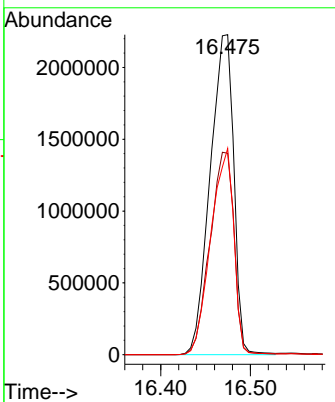
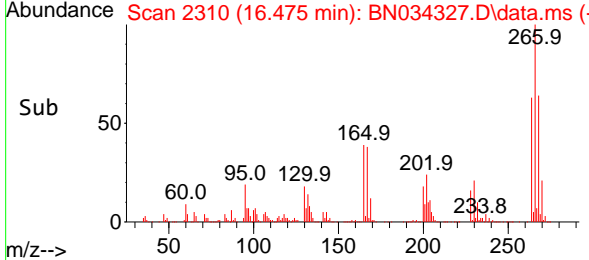


Tgt Ion:266 Resp: 4077600

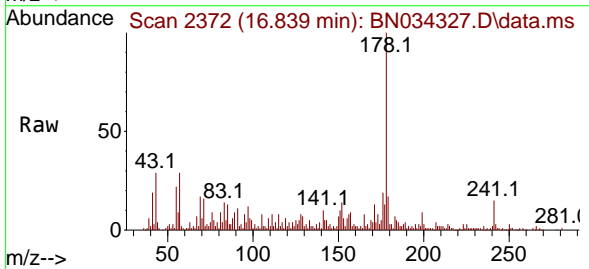
Ion	Ratio	Lower	Upper
266	100		
264	63.0	51.1	76.7
268	64.4	52.8	79.2

Manual Integrations
APPROVED

Reviewed By :Yogesh Patel 10/04/2024
 Supervised By :mohammad ahmed 10/04/2024



#72
 Phenanthrene
 Concen: 1.545 ng/uI
 RT: 16.839 min Scan# 2372
 Delta R.T. -0.000 min
 Lab File: BN034327.D
 Acq: 02 Oct 2024 08:17



Tgt Ion:178 Resp: 97377

Ion	Ratio	Lower	Upper
178	100		
179	17.4	11.9	17.9
176	18.7	15.2	22.8

