

Data Path : Z:\svoasrv\HPCHEM1\BNA_N\Data\BN100224\
 Data File : BN034366.D
 Acq On : 03 Oct 2024 11:56
 Operator : RC/JU
 Sample : P4016-17DL 10X
 Misc :
 ALS Vial : 35 Sample Multiplier: 1

Instrument :
 BNA_N
 ClientSampleId :
 DDC22DL

Manual Integrations
 APPROVED

Reviewed By :Yogesh Patel 10/04/2024
 Supervised By :mohammad ahmed 10/05/2024

Quant Time: Oct 04 00:24:31 2024
 Quant Method : Z:\svoasrv\HPCHEM1\BNA_N\Methods\SFAM-EPA-BN091124.MA.M
 Quant Title : SVOA CALIBRATION
 QLast Update : Mon Sep 30 14:14:38 2024
 Response via : Initial Calibration

Compound	R.T.	QIon	Response	Conc	Units	Dev(Min)
Internal Standards						
1) 1,4-Dichlorobenzene-d4	7.381	152	222226	20.000	ng/u1	0.00
20) Naphthalene-d8	10.139	136	890644	20.000	ng/u1	0.00
38) Acenaphthene-d10	14.033	164	542765	20.000	ng/u1	0.00
64) Phenanthrene-d10	16.792	188	1106011	20.000	ng/u1	0.00
79) Chrysene-d12	21.033	240	1141189	20.000	ng/u1	0.00
88) Perylene-d12	23.739	264	1340003	20.000	ng/u1	0.00
System Monitoring Compounds						
3) 1,4-Dioxane-d8	3.010	96	1874	0.344	ng/uL	0.01
4) Pyridine-d5	3.416	84	7537m	0.466	ng/u1	0.03
7) Phenol-d5	6.581	99	32947	1.671	ng/u1	0.00
9) Bis-(2-Chloroethyl)eth...	6.740	67	23378	1.910	ng/u1	0.00
11) 2-Chlorophenol-d4	6.922	132	31088	2.002	ng/u1	0.00
15) 4-Methylphenol-d8	8.098	113	25888	1.595	ng/u1	0.00
21) Nitrobenzene-d5	8.522	128	13485	1.900	ng/u1	0.00
24) 2-Nitrophenol-d4	9.239	143	12653	1.733	ng/u1	0.00
28) 2,4-Dichlorophenol-d3	9.775	165	27319	1.987	ng/u1	0.00
31) 4-Chloroaniline-d4	10.286	131	29728	1.428	ng/u1	0.00
46) Dimethylphthalate-d6	13.463	166	88653	2.186	ng/u1	0.00
49) Acenaphthylene-d8	13.722	160	101599	2.226	ng/u1	0.00
54) 4-Nitrophenol-d4	0.000	143	0d	0.000	ng/u1	0.00
60) Fluorene-d10	15.039	176	81643	2.375	ng/u1	0.00
65) 4,6-Dinitro-2-methylph...	15.174	200	7075	1.073	ng/u1	0.00
73) Anthracene-d10	16.892	188	123572	2.376	ng/u1	0.00
81) Pyrene-d10	19.204	212	149999	2.359	ng/u1	0.00
92) Benzo(a)pyrene-d12	23.550	264	154736	2.248	ng/u1	0.00
Target Compounds						
36) 2-Methylnaphthalene	11.810	142	54474	1.623	ng/u1	97
58) 2,3,4,6-Tetrachlorophenol	14.674	232	92135	9.731	ng/u1	93
71) Pentachlorophenol	16.457	266	1172531	135.052	ng/u1	98

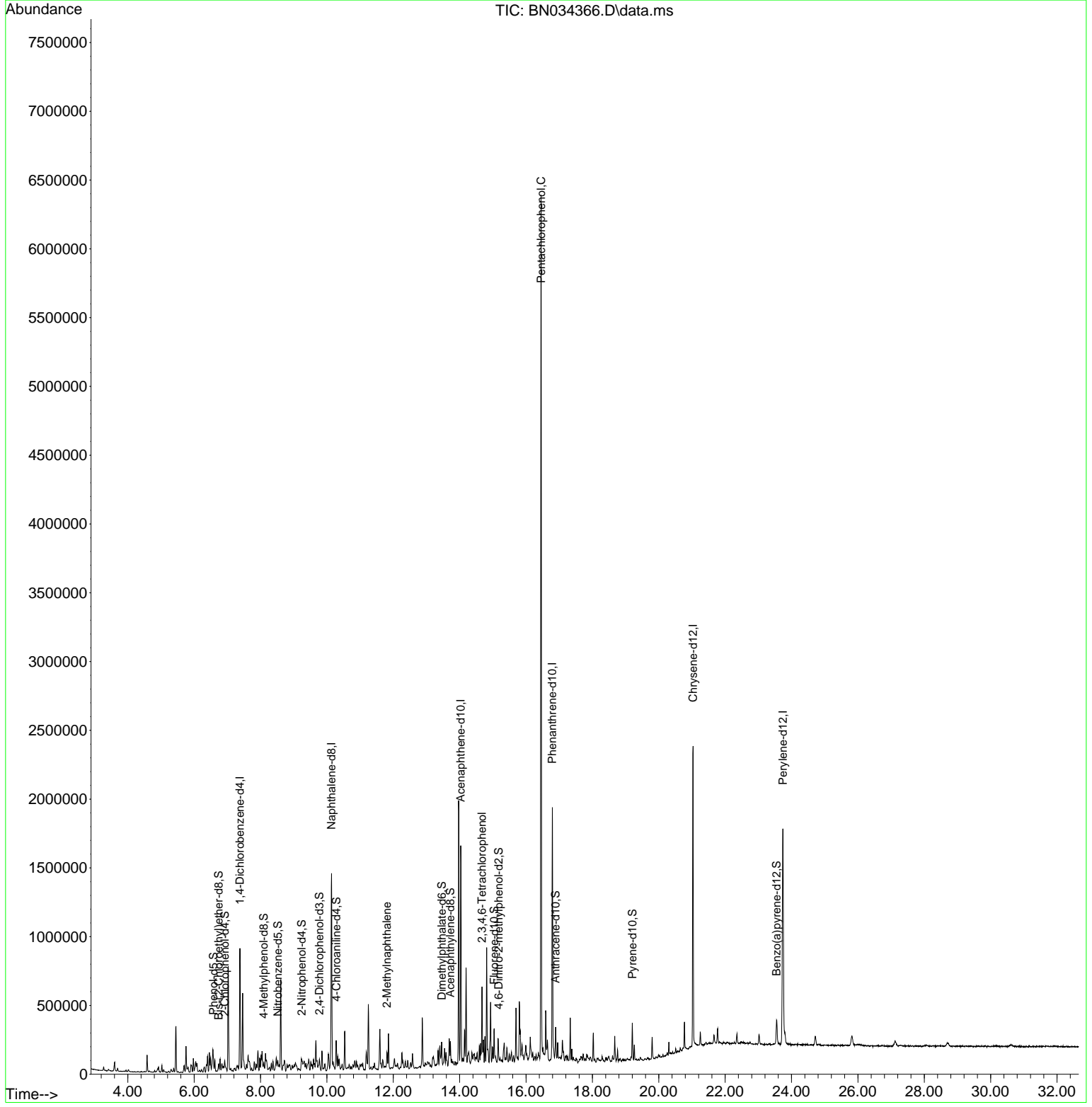
(#) = qualifier out of range (m) = manual integration (+) = signals summed

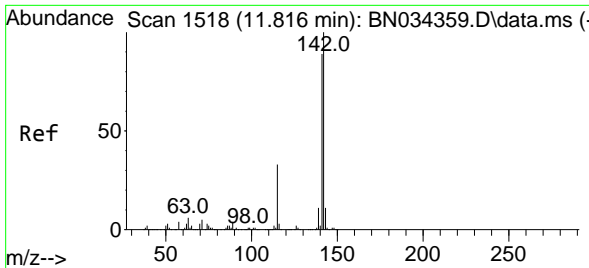
Data Path : Z:\svoasrv\HPCHEM1\BNA_N\Data\BN100224\
 Data File : BN034366.D
 Acq On : 03 Oct 2024 11:56
 Operator : RC/JU
 Sample : P4016-17DL 10X
 Misc :
 ALS Vial : 35 Sample Multiplier: 1

Instrument :
 BNA_N
ClientSampleId :
 DDC22DL

Quant Time: Oct 04 00:24:31 2024
 Quant Method : Z:\svoasrv\HPCHEM1\BNA_N\Methods\SFAM-EPA-BN091124.MA.M
 Quant Title : SVOA CALIBRATION
 QLast Update : Mon Sep 30 14:14:38 2024
 Response via : Initial Calibration

Manual Integrations
APPROVED
 Reviewed By :Yogesh Patel 10/04/2024
 Supervised By :mohammad ahmed 10/05/2024





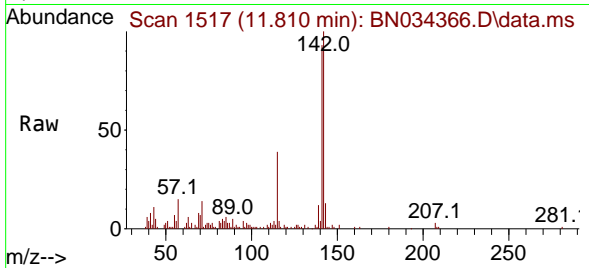
#36
 2-Methylnaphthalene
 Concen: 1.623 ng/ul
 RT: 11.810 min Scan# 111
 Delta R.T. -0.006 min
 Lab File: BN034366.D
 Acq: 03 Oct 2024 11:56

Instrument :

BNA_N

ClientSampleId :

DDC22DL



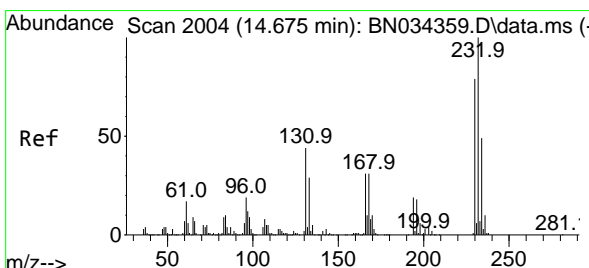
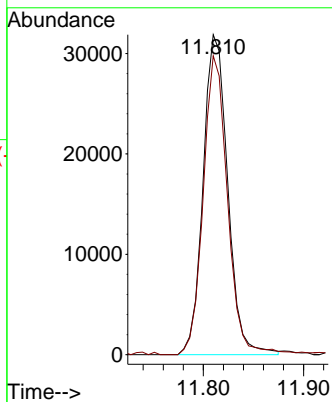
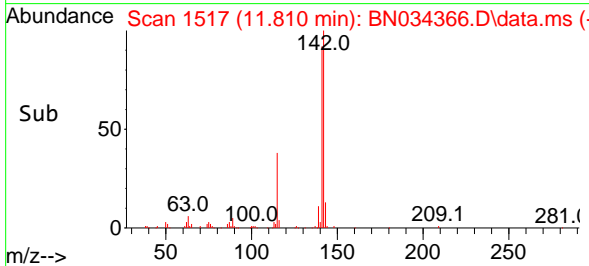
Tgt Ion:142 Resp: 54474
 Ion Ratio Lower Upper
 142 100
 141 93.4 72.2 108.2

Manual Integrations

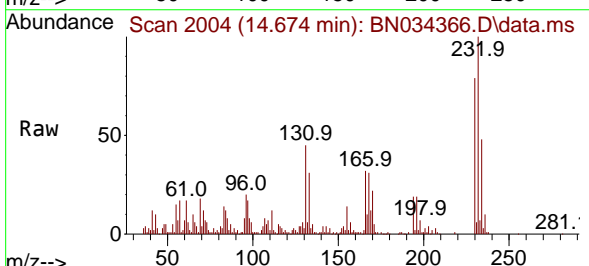
APPROVED

Reviewed By :Yogesh Patel 10/04/2024

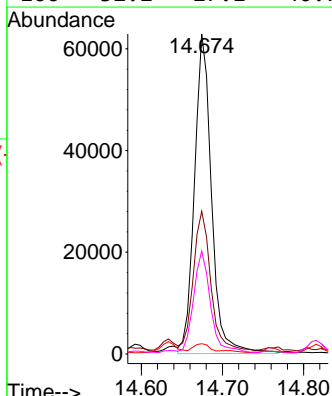
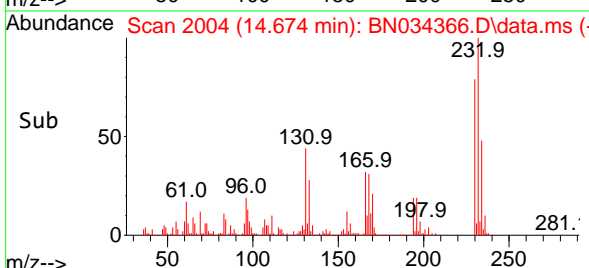
Supervised By :mohammad ahmed 10/05/2024

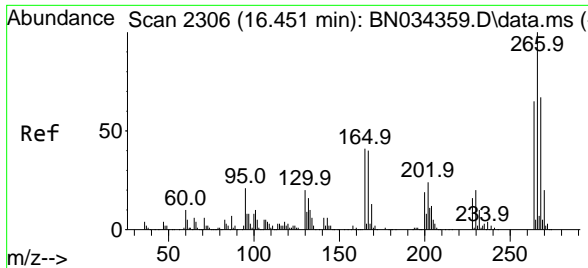


#58
 2,3,4,6-Tetrachlorophenol
 Concen: 9.731 ng/ul
 RT: 14.674 min Scan# 2004
 Delta R.T. -0.006 min
 Lab File: BN034366.D
 Acq: 03 Oct 2024 11:56



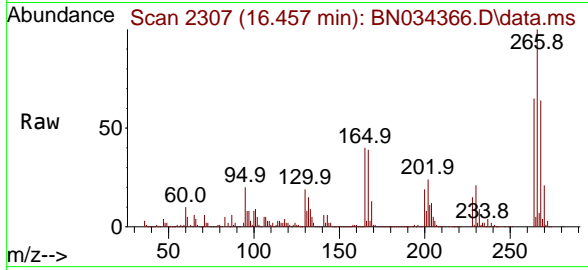
Tgt Ion:232 Resp: 92135
 Ion Ratio Lower Upper
 232 100
 131 44.6 41.0 61.6
 130 3.2 2.2 3.2
 166 32.2 27.1 40.7





#71
 Pentachlorophenol
 Concen: 135.052 ng/ul
 RT: 16.457 min Scan# 21
 Delta R.T. -0.000 min
 Lab File: BN034366.D
 Acq: 03 Oct 2024 11:56

Instrument :
 BNA_N
 ClientSampleId :
 DDC22DL



Tgt Ion:266 Resp: 117253

Ion	Ratio	Lower	Upper
266	100		
264	65.4	51.1	76.7
268	63.8	52.8	79.2

Manual Integrations
APPROVED
 Reviewed By :Yogesh Patel 10/04/2024
 Supervised By :mohammad ahmed 10/05/2024

