

Data Path : Z:\svoasrv\HPCHEM1\BNA\_N\Data\BN100421\  
 Data File : BN016740.D  
 Acq On : 05 Oct 2021 10:36  
 Operator : CG/JU  
 Sample : SSTDCCC0.4  
 Misc :  
 ALS Vial : 33 Sample Multiplier: 1

Instrument :  
 BNA\_N  
 ClientSampleId :  
 SSTDCCC0.4EC

Quant Time: Oct 05 11:05:46 2021  
 Quant Method : Z:\SVOASRV\HPCHEM1\BNA\_N\METHODS\8270-SIM-BN100421.M  
 Quant Title : ASP BNA STANDARDS FOR 5 POINT CALIBRATION  
 QLast Update : Mon Oct 04 17:52:33 2021  
 Response via : Initial Calibration

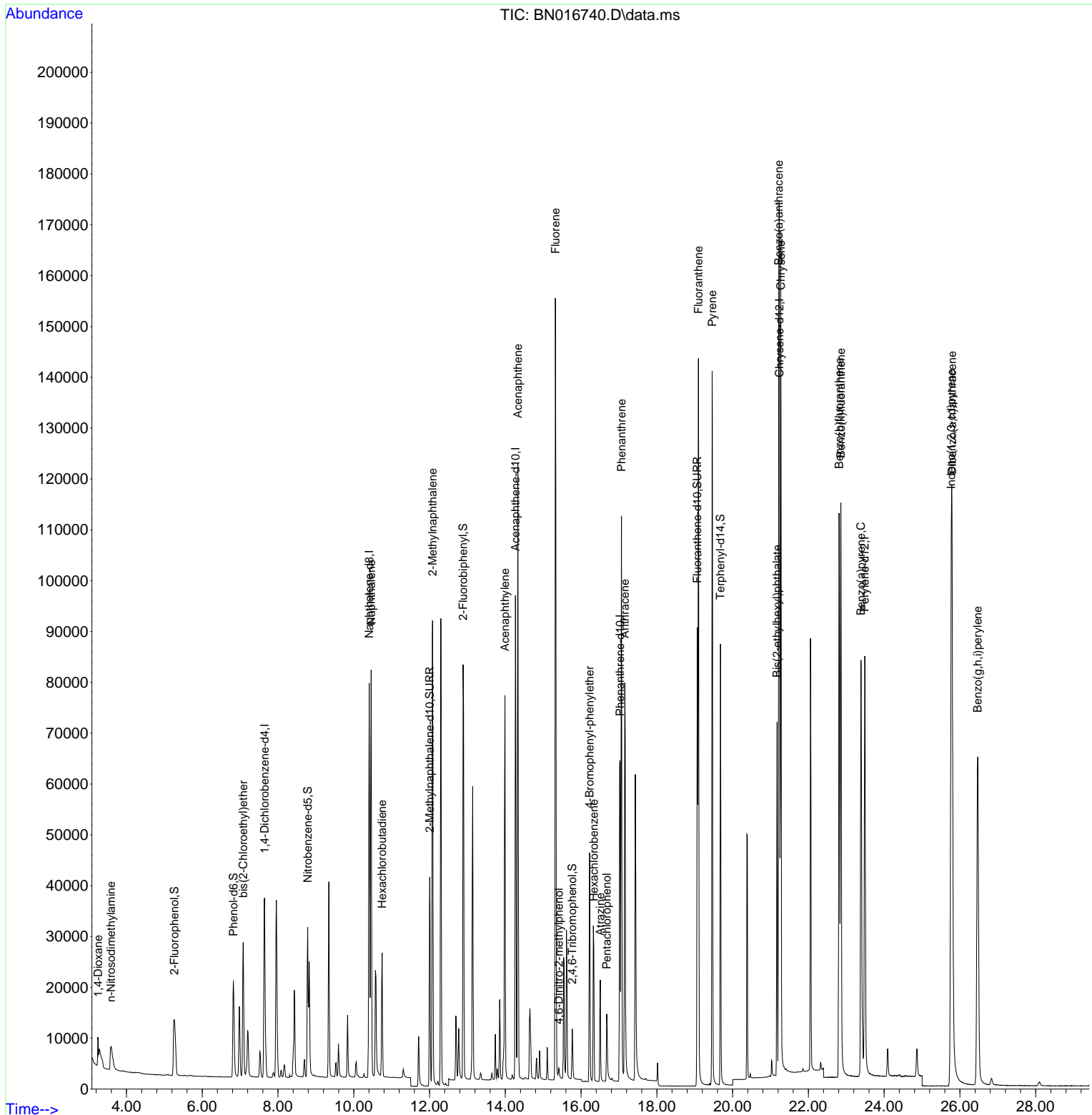
| Compound                      | R.T.   | QIon | Response | Conc | Units | Dev(Min) |        |
|-------------------------------|--------|------|----------|------|-------|----------|--------|
| Internal Standards            |        |      |          |      |       |          |        |
| 1) 1,4-Dichlorobenzene-d4     | 7.642  | 152  | 23318    | 0.40 | ng    | 0.00     |        |
| 7) Naphthalene-d8             | 10.406 | 136  | 103566   | 0.40 | ng    | # 0.00   |        |
| 13) Acenaphthene-d10          | 14.269 | 164  | 53161    | 0.40 | ng    | 0.00     |        |
| 19) Phenanthrene-d10          | 17.029 | 188  | 101328   | 0.40 | ng    | 0.00     |        |
| 29) Chrysene-d12              | 21.238 | 240  | 104040   | 0.40 | ng    | 0.00     |        |
| 35) Perylene-d12              | 23.488 | 264  | 112545   | 0.40 | ng    | 0.00     |        |
| System Monitoring Compounds   |        |      |          |      |       |          |        |
| 4) 2-Fluorophenol             | 5.263  | 112  | 23073    | 0.39 | ng    | 0.00     |        |
| 5) Phenol-d6                  | 6.822  | 99   | 25424    | 0.39 | ng    | 0.00     |        |
| 8) Nitrobenzene-d5            | 8.784  | 82   | 26497    | 0.36 | ng    | 0.00     |        |
| 11) 2-Methylnaphthalene-d10   | 12.003 | 152  | 57274    | 0.37 | ng    | 0.00     |        |
| 14) 2,4,6-Tribromophenol      | 15.766 | 330  | 9161     | 0.42 | ng    | -0.01    |        |
| 15) 2-Fluorobiphenyl          | 12.886 | 172  | 81229    | 0.38 | ng    | -0.01    |        |
| 27) Fluoranthene-d10          | 19.068 | 212  | 104750   | 0.38 | ng    | 0.00     |        |
| 31) Terphenyl-d14             | 19.678 | 244  | 89479    | 0.38 | ng    | 0.00     |        |
| Target Compounds              |        |      |          |      |       |          | Qvalue |
| 2) 1,4-Dioxane                | 3.253  | 88   | 4003     | 0.37 | ng    | # 65     |        |
| 3) n-Nitrosodimethylamine     | 3.594  | 42   | 6657     | 0.38 | ng    | # 99     |        |
| 6) bis(2-Chloroethyl)ether    | 7.080  | 93   | 25009    | 0.39 | ng    | 100      |        |
| 9) Naphthalene                | 10.457 | 128  | 105724   | 0.37 | ng    | 100      |        |
| 10) Hexachlorobutadiene       | 10.749 | 225  | 20257    | 0.38 | ng    | # 100    |        |
| 12) 2-Methylnaphthalene       | 12.078 | 142  | 68761    | 0.38 | ng    | 100      |        |
| 16) Acenaphthylene            | 13.989 | 152  | 86733    | 0.37 | ng    | 100      |        |
| 17) Acenaphthene              | 14.332 | 154  | 58192    | 0.38 | ng    | 99       |        |
| 18) Fluorene                  | 15.322 | 166  | 70674    | 0.38 | ng    | 100      |        |
| 20) 4,6-Dinitro-2-methylph... | 15.410 | 198  | 1756     | 0.47 | ng    | # 74     |        |
| 21) 4-Bromophenyl-phenylether | 16.226 | 248  | 22867    | 0.37 | ng    | # 91     |        |
| 22) Hexachlorobenzene         | 16.336 | 284  | 26871    | 0.38 | ng    | 99       |        |
| 23) Atrazine                  | 16.506 | 200  | 16704    | 0.34 | ng    | 97       |        |
| 24) Pentachlorophenol         | 16.677 | 266  | 8457     | 0.59 | ng    | 99       |        |
| 25) Phenanthrene              | 17.066 | 178  | 113254   | 0.38 | ng    | 100      |        |
| 26) Anthracene                | 17.151 | 178  | 97070    | 0.36 | ng    | 100      |        |
| 28) Fluoranthene              | 19.097 | 202  | 130172   | 0.39 | ng    | 100      |        |
| 30) Pyrene                    | 19.460 | 202  | 131569   | 0.38 | ng    | 100      |        |
| 32) Benzo(a)anthracene        | 21.217 | 228  | 128403   | 0.40 | ng    | 99       |        |
| 33) Chrysene                  | 21.270 | 228  | 134591   | 0.41 | ng    | 100      |        |
| 34) Bis(2-ethylhexyl)phtha... | 21.174 | 149  | 61550    | 0.31 | ng    | 100      |        |
| 36) Indeno(1,2,3-cd)pyrene    | 25.771 | 276  | 164679   | 0.46 | ng    | 99       |        |
| 37) Benzo(b)fluoranthene      | 22.810 | 252  | 141299   | 0.39 | ng    | 99       |        |
| 38) Benzo(k)fluoranthene      | 22.858 | 252  | 141648   | 0.41 | ng    | 99       |        |
| 39) Benzo(a)pyrene            | 23.388 | 252  | 129955   | 0.40 | ng    | 99       |        |
| 40) Dibenzo(a,h)anthracene    | 25.791 | 278  | 132506   | 0.47 | ng    | 99       |        |
| 41) Benzo(g,h,i)perylene      | 26.469 | 276  | 141791   | 0.45 | ng    | 100      |        |

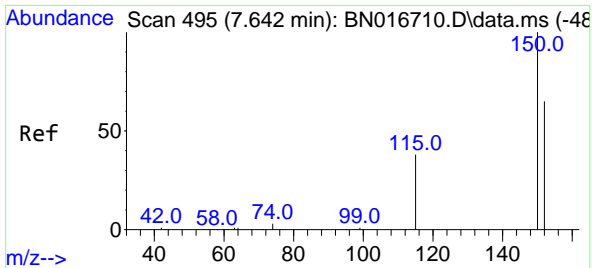
(#) = qualifier out of range (m) = manual integration (+) = signals summed

Data Path : Z:\svoasrv\HPCHEM1\BNA\_N\Data\BN100421\  
 Data File : BN016740.D  
 Acq On : 05 Oct 2021 10:36  
 Operator : CG/JU  
 Sample : SSTDCCC0.4  
 Misc :  
 ALS Vial : 33 Sample Multiplier: 1

Instrument :  
 BNA\_N  
 Client Sampled :  
 SSTDCCC0.4EC

Quant Time: Oct 05 11:05:46 2021  
 Quant Method : Z:\SVOASRV\HPCHEM1\BNA\_N\METHODS\8270-SIM-BN100421.M  
 Quant Title : ASP BNA STANDARDS FOR 5 POINT CALIBRATION  
 QLast Update : Mon Oct 04 17:52:33 2021  
 Response via : Initial Calibration



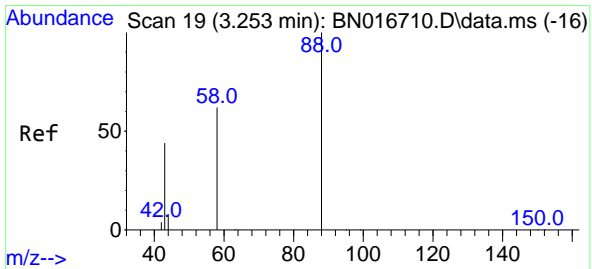
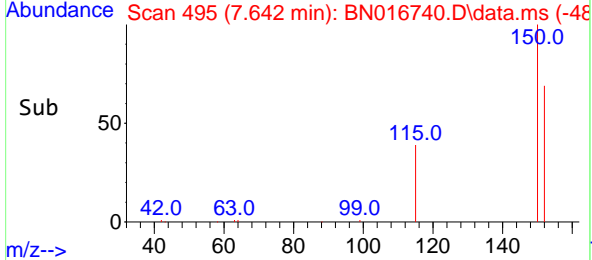
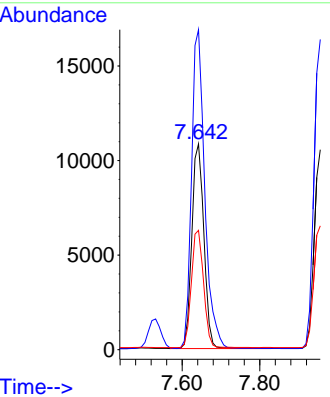
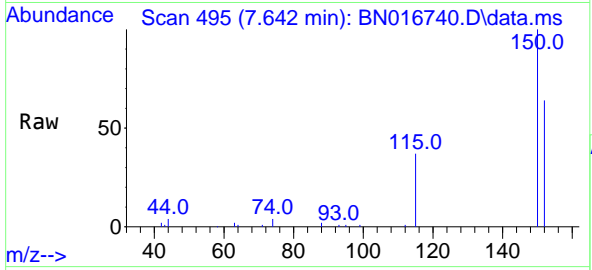


#1  
 1,4-Dichlorobenzene-d4  
 Concen: 0.40 ng  
 RT: 7.642 min Scan# 495  
 Delta R.T. 0.000 min  
 Lab File: BN016740.D  
 Acq: 05 Oct 2021 10:36

**Instrument :**  
 BNA\_N  
**ClientSampleId :**  
 SSTDCCC0.4EC

Tgt Ion:152 Resp: 23318

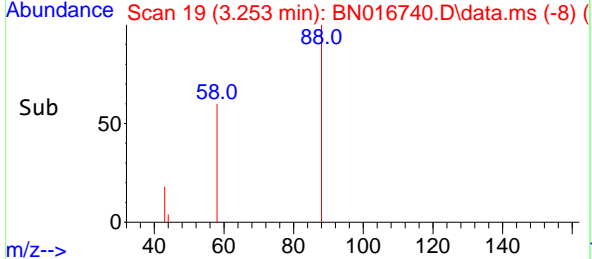
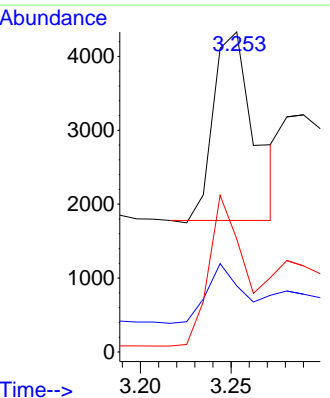
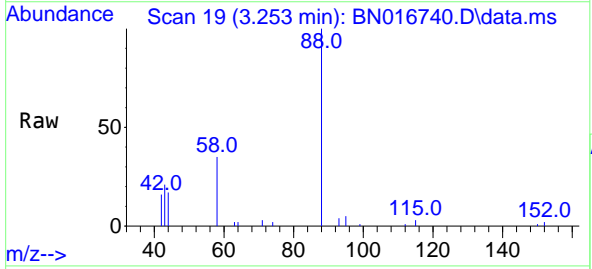
| Ion | Ratio | Lower | Upper |
|-----|-------|-------|-------|
| 152 | 100   |       |       |
| 150 | 155.5 | 123.3 | 184.9 |
| 115 | 58.0  | 47.0  | 70.6  |

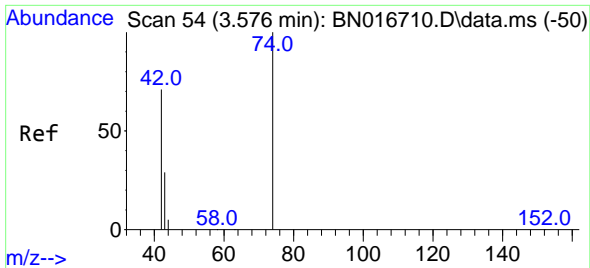


#2  
 1,4-Dioxane  
 Concen: 0.37 ng  
 RT: 3.253 min Scan# 19  
 Delta R.T. 0.000 min  
 Lab File: BN016740.D  
 Acq: 05 Oct 2021 10:36

Tgt Ion: 88 Resp: 4003

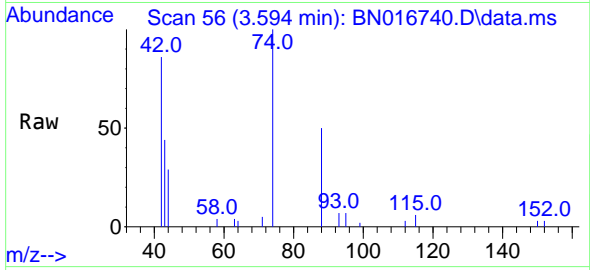
| Ion | Ratio | Lower | Upper |
|-----|-------|-------|-------|
| 88  | 100   |       |       |
| 43  | 27.0  | 61.7  | 92.5# |
| 58  | 66.6  | 62.2  | 93.2  |



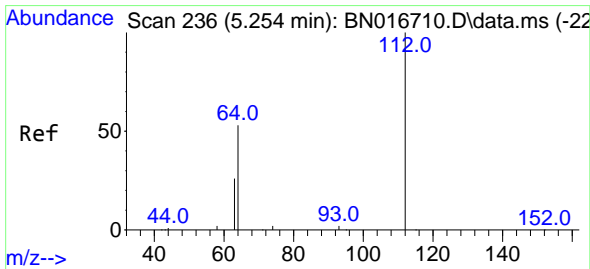
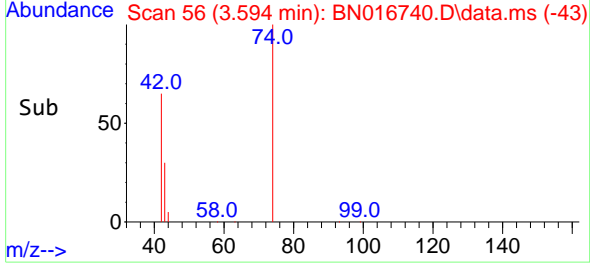
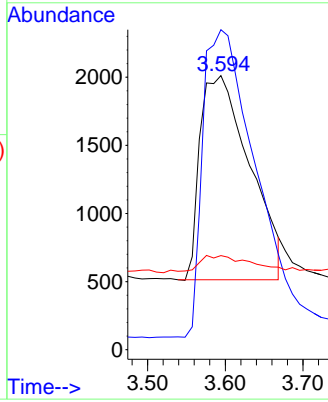


#3  
 n-Nitrosodimethylamine  
 Concen: 0.38 ng  
 RT: 3.594 min Scan# 56  
 Delta R.T. 0.019 min  
 Lab File: BN016740.D  
 Acq: 05 Oct 2021 10:36

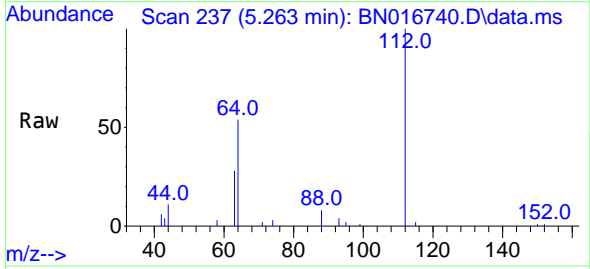
Instrument :  
 BNA\_N  
 ClientSampleId :  
 SSTDCCC0.4EC



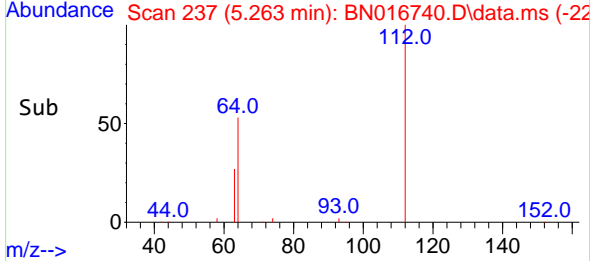
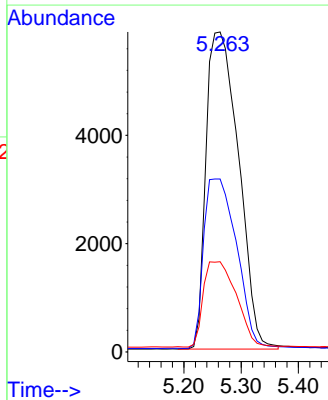
Tgt Ion: 42 Resp: 6657  
 Ion Ratio Lower Upper  
 42 100  
 74 153.7 124.0 186.0  
 44 8.9 5.6 8.4#

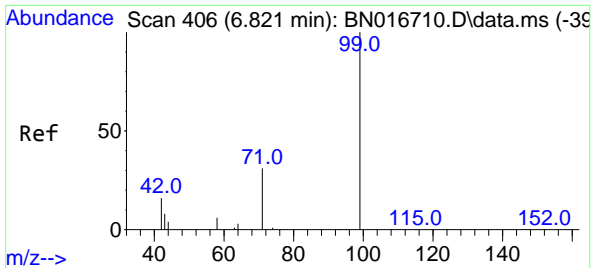


#4  
 2-Fluorophenol  
 Concen: 0.39 ng  
 RT: 5.263 min Scan# 237  
 Delta R.T. 0.009 min  
 Lab File: BN016740.D  
 Acq: 05 Oct 2021 10:36



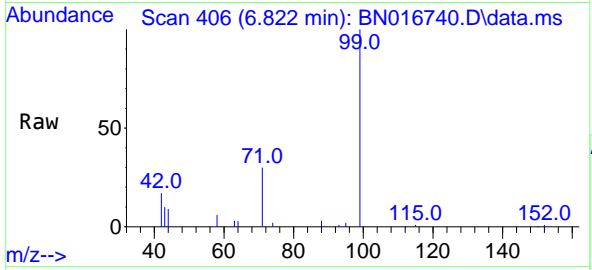
Tgt Ion: 112 Resp: 23073  
 Ion Ratio Lower Upper  
 112 100  
 64 54.2 42.9 64.3  
 63 27.3 21.5 32.3





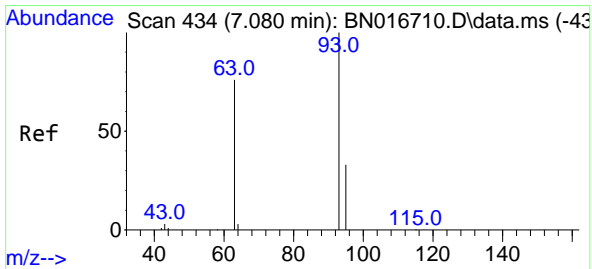
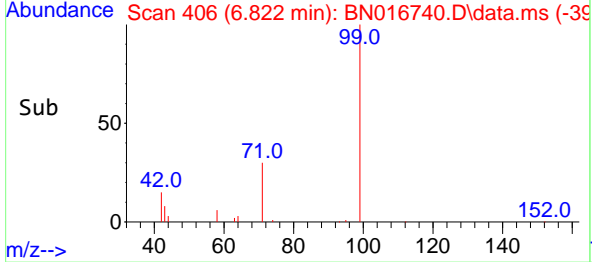
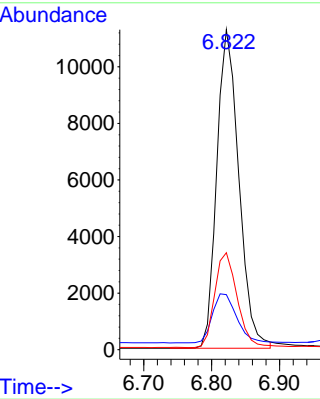
#5  
Phenol-d6  
Concen: 0.39 ng  
RT: 6.822 min Scan# 406  
Delta R.T. 0.000 min  
Lab File: BN016740.D  
Acq: 05 Oct 2021 10:36

Instrument :  
BNA\_N  
ClientSampleId :  
SSTDCCC0.4EC

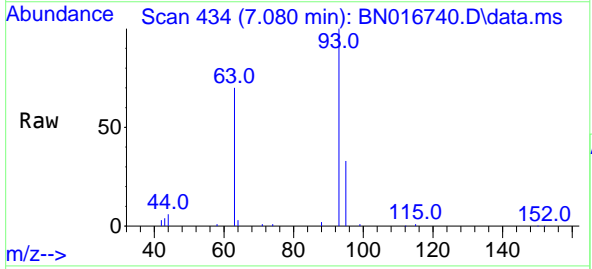


Tgt Ion: 99 Resp: 25424

| Ion | Ratio | Lower | Upper |
|-----|-------|-------|-------|
| 99  | 100   |       |       |
| 42  | 16.9  | 13.4  | 20.2  |
| 71  | 30.3  | 24.0  | 36.0  |

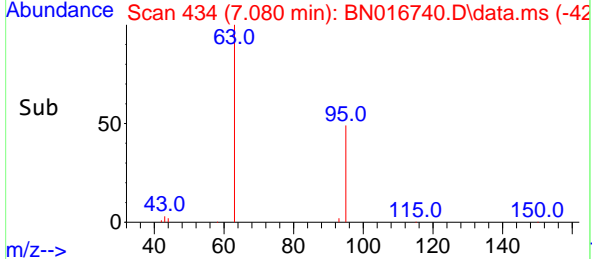
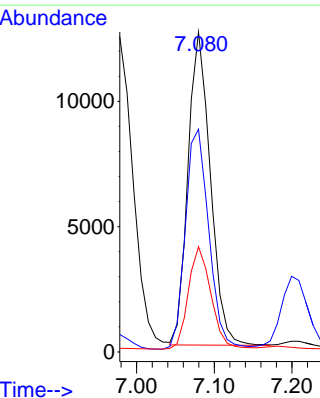


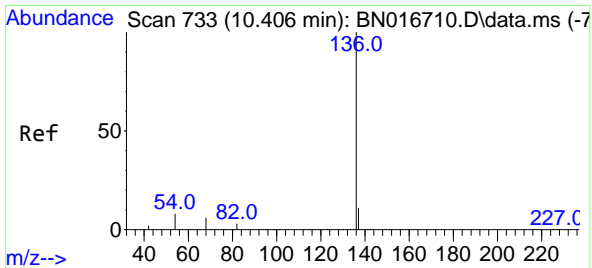
#6  
bis(2-Chloroethyl)ether  
Concen: 0.39 ng  
RT: 7.080 min Scan# 434  
Delta R.T. 0.000 min  
Lab File: BN016740.D  
Acq: 05 Oct 2021 10:36



Tgt Ion: 93 Resp: 25009

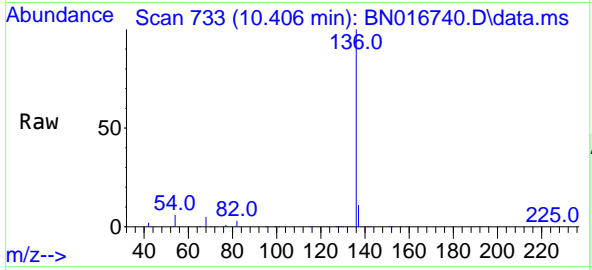
| Ion | Ratio | Lower | Upper |
|-----|-------|-------|-------|
| 93  | 100   |       |       |
| 63  | 74.0  | 59.0  | 88.6  |
| 95  | 33.1  | 26.4  | 39.6  |





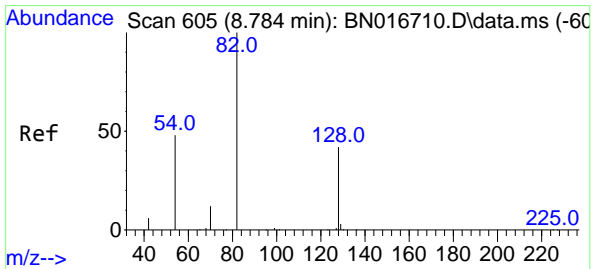
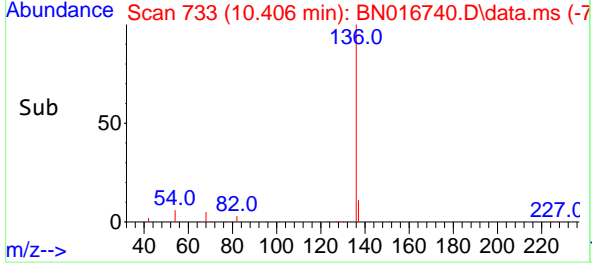
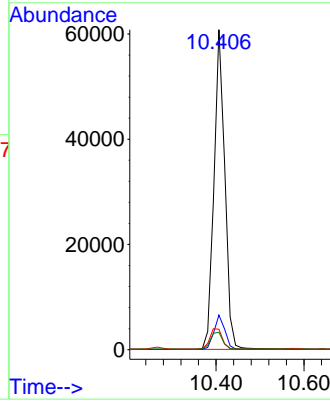
#7  
 Naphthalene-d8  
 Concen: 0.40 ng  
 RT: 10.406 min Scan# 733  
 Delta R.T. 0.000 min  
 Lab File: BN016740.D  
 Acq: 05 Oct 2021 10:36

Instrument :  
 BNA\_N  
 ClientSampleId :  
 SSTDCCC0.4EC



Tgt Ion: 136 Resp: 103566

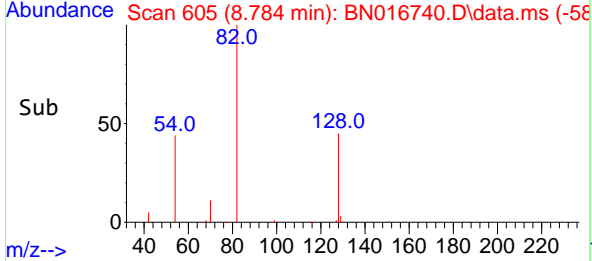
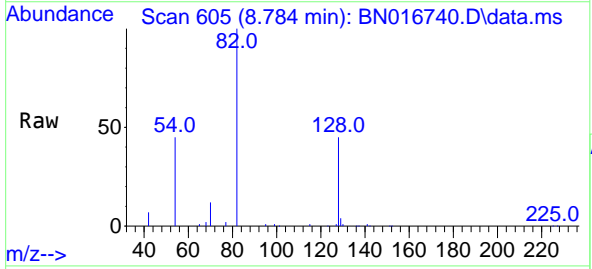
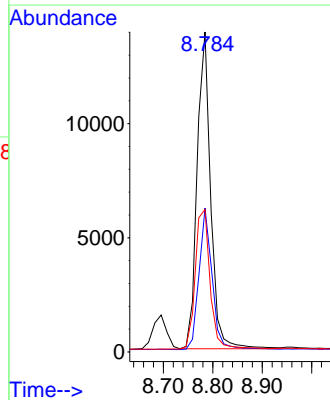
| Ion | Ratio | Lower | Upper |
|-----|-------|-------|-------|
| 136 | 100   |       |       |
| 137 | 10.8  | 8.9   | 13.3  |
| 54  | 6.4   | 6.5   | 9.7#  |
| 68  | 5.5   | 5.3   | 7.9   |

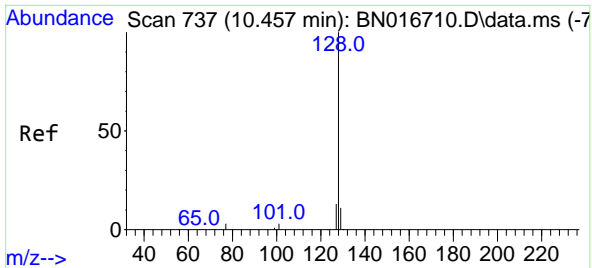


#8  
 Nitrobenzene-d5  
 Concen: 0.36 ng  
 RT: 8.784 min Scan# 605  
 Delta R.T. 0.000 min  
 Lab File: BN016740.D  
 Acq: 05 Oct 2021 10:36

Tgt Ion: 82 Resp: 26497

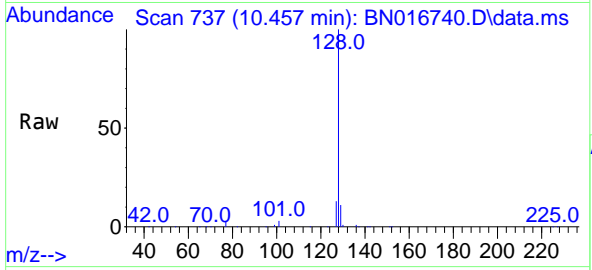
| Ion | Ratio | Lower | Upper |
|-----|-------|-------|-------|
| 82  | 100   |       |       |
| 128 | 44.9  | 33.8  | 50.6  |
| 54  | 44.6  | 38.5  | 57.7  |



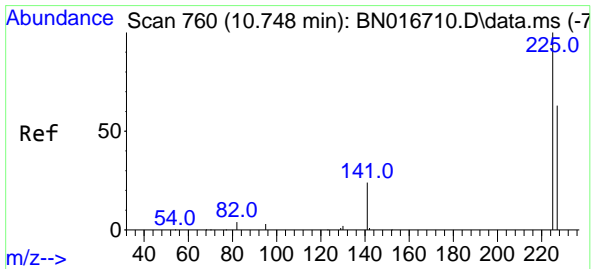
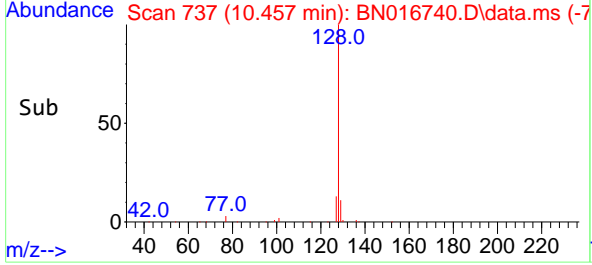
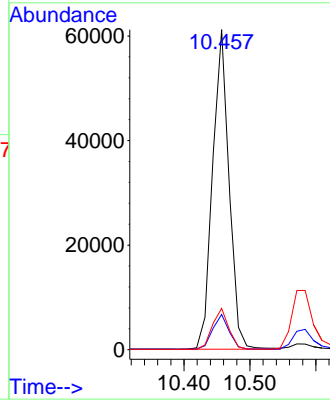


#9  
 Naphthalene  
 Concen: 0.37 ng  
 RT: 10.457 min Scan# 737  
 Delta R.T. 0.000 min  
 Lab File: BN016740.D  
 Acq: 05 Oct 2021 10:36

Instrument :  
 BNA\_N  
 ClientSampleId :  
 SSTDCCC0.4EC

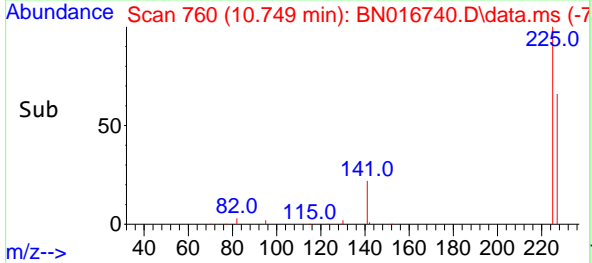
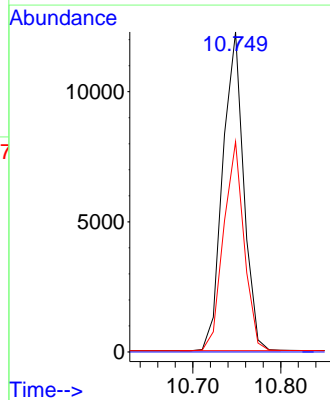
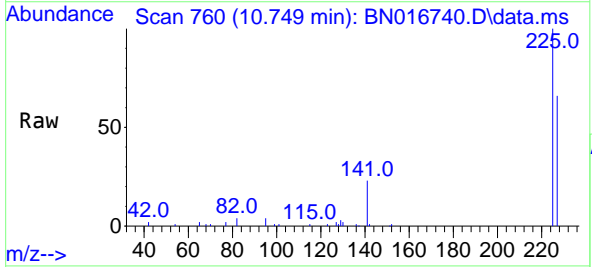


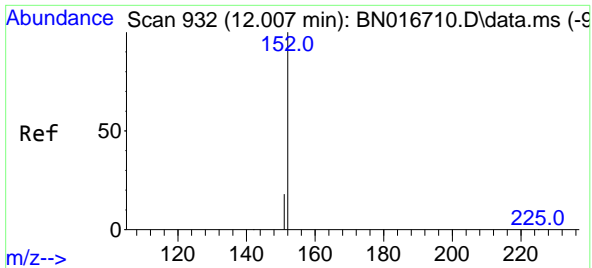
Tgt Ion:128 Resp: 105724  
 Ion Ratio Lower Upper  
 128 100  
 129 11.0 8.7 13.1  
 127 12.9 10.3 15.5



#10  
 Hexachlorobutadiene  
 Concen: 0.38 ng  
 RT: 10.749 min Scan# 760  
 Delta R.T. 0.000 min  
 Lab File: BN016740.D  
 Acq: 05 Oct 2021 10:36

Tgt Ion:225 Resp: 20257  
 Ion Ratio Lower Upper  
 225 100  
 223 0.0 0.0 0.0  
 227 64.3 51.1 76.7

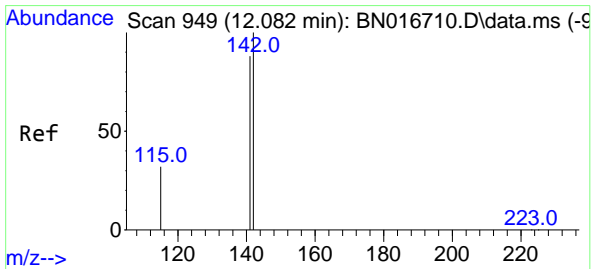
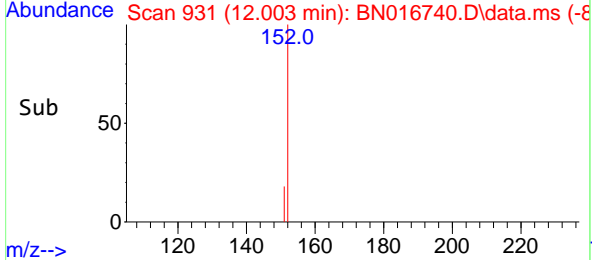
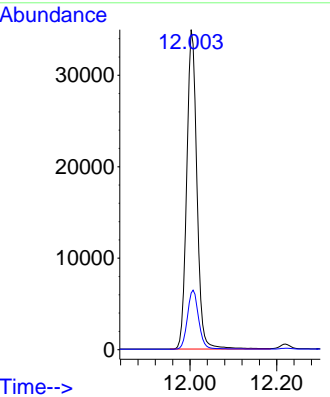
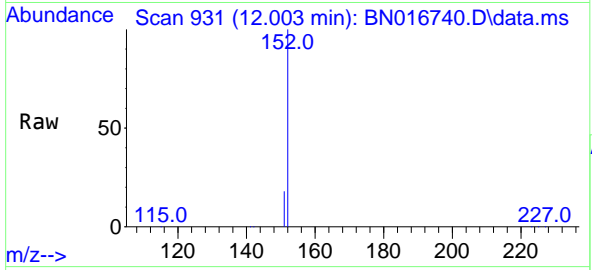




#11  
 2-Methylnaphthalene-d10  
 Concen: 0.37 ng  
 RT: 12.003 min Scan# 931  
 Delta R.T. -0.004 min  
 Lab File: BN016740.D  
 Acq: 05 Oct 2021 10:36

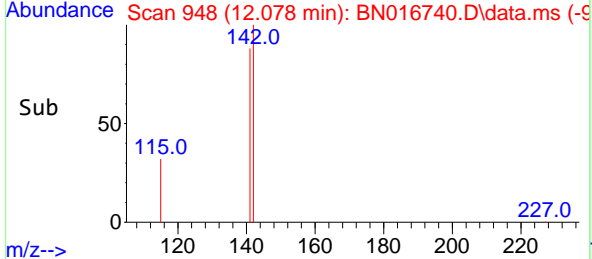
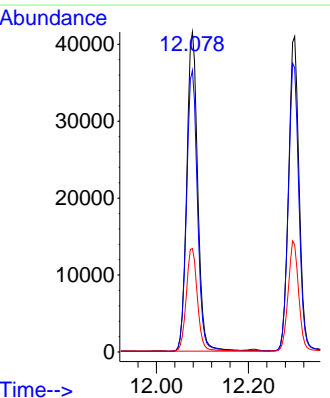
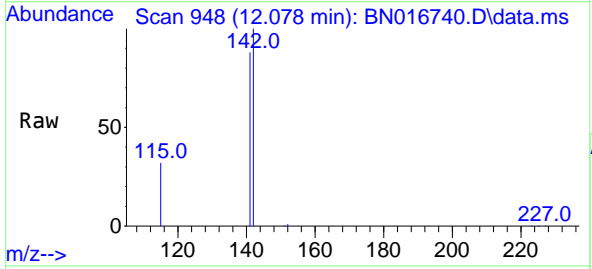
**Instrument :**  
 BNA\_N  
**ClientSampled :**  
 SSTDCCC0.4EC

Tgt Ion:152 Resp: 57274  
 Ion Ratio Lower Upper  
 152 100  
 151 20.4 16.2 24.4

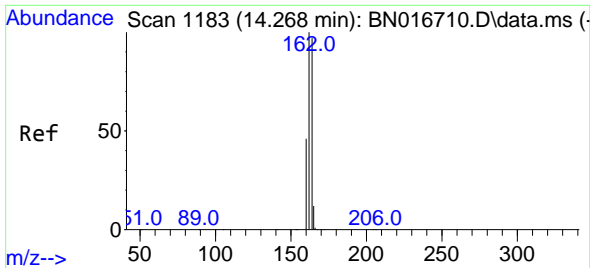


#12  
 2-Methylnaphthalene  
 Concen: 0.38 ng  
 RT: 12.078 min Scan# 948  
 Delta R.T. -0.004 min  
 Lab File: BN016740.D  
 Acq: 05 Oct 2021 10:36

Tgt Ion:142 Resp: 68761  
 Ion Ratio Lower Upper  
 142 100  
 141 88.0 70.6 106.0  
 115 32.3 26.1 39.1



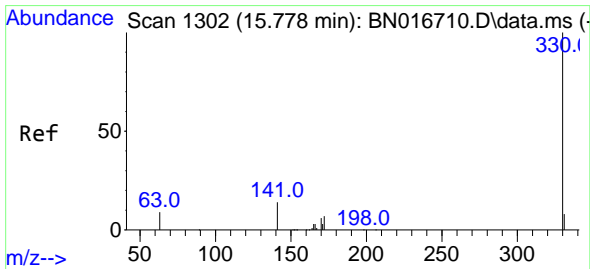
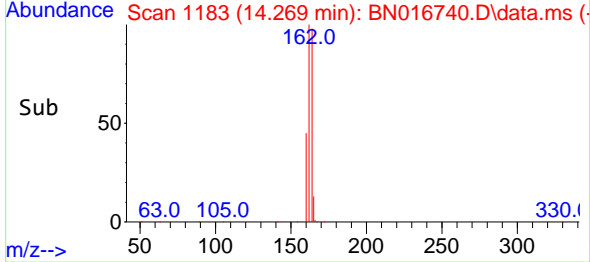
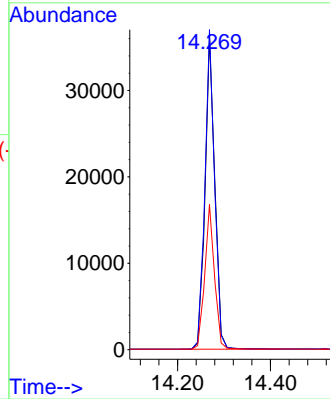
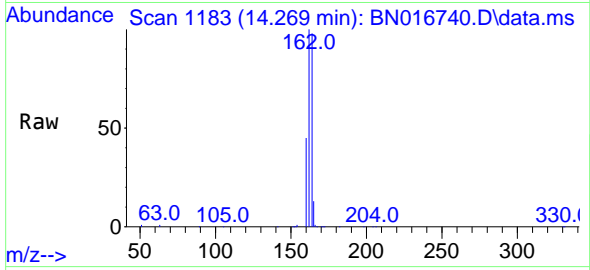




#13  
 Acenaphthene-d10  
 Concen: 0.40 ng  
 RT: 14.269 min Scan# 1183  
 Delta R.T. 0.000 min  
 Lab File: BN016740.D  
 Acq: 05 Oct 2021 10:36

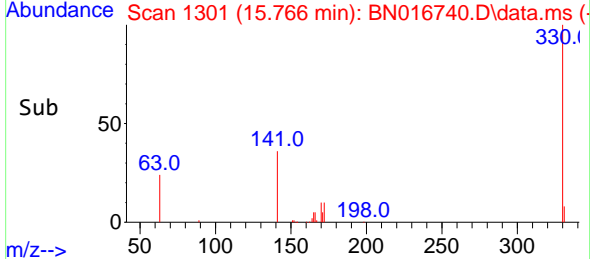
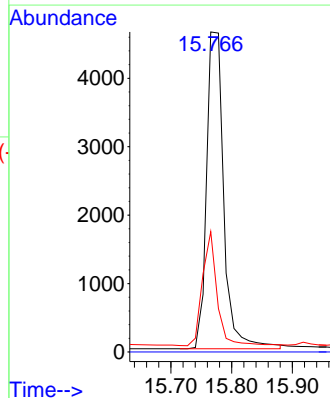
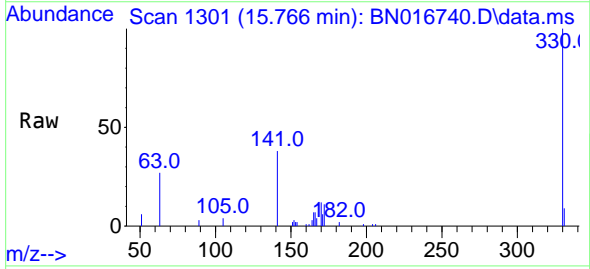
Instrument :  
 BNA\_N  
 ClientSampleId :  
 SSTDCCC0.4EC

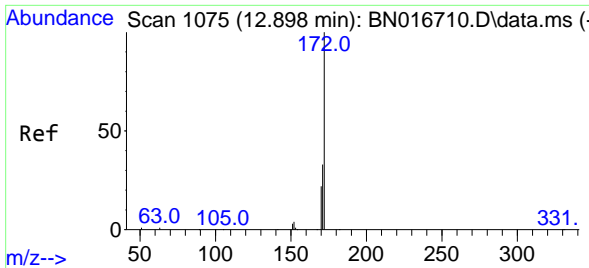
Tgt Ion:164 Resp: 53161  
 Ion Ratio Lower Upper  
 164 100  
 162 102.2 82.6 124.0  
 160 46.4 38.2 57.2



#14  
 2,4,6-Tribromophenol  
 Concen: 0.42 ng  
 RT: 15.766 min Scan# 1301  
 Delta R.T. -0.012 min  
 Lab File: BN016740.D  
 Acq: 05 Oct 2021 10:36

Tgt Ion:330 Resp: 9161  
 Ion Ratio Lower Upper  
 330 100  
 332 0.0 0.0 0.0  
 141 30.2 24.2 36.2



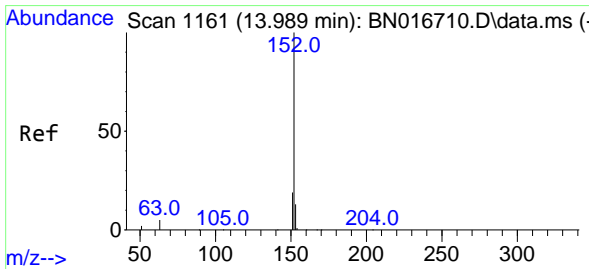
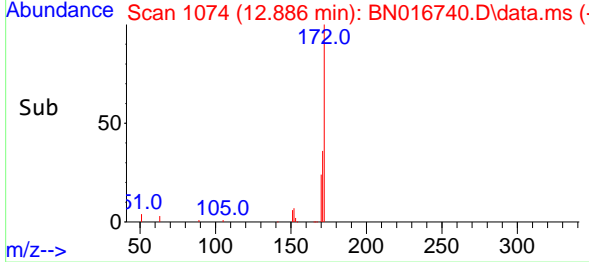
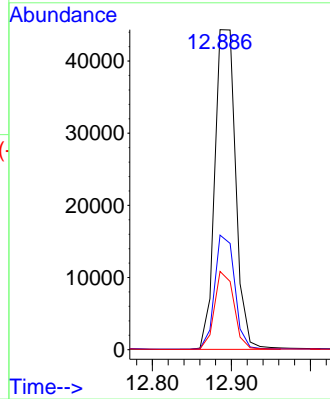
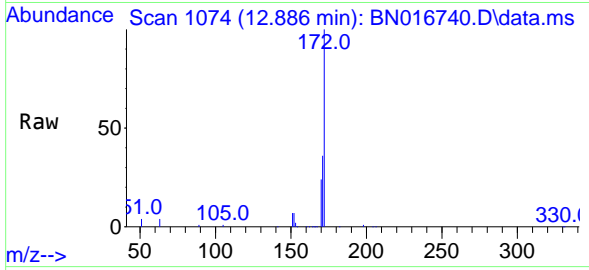


#15  
 2-Fluorobiphenyl  
 Concen: 0.38 ng  
 RT: 12.886 min Scan# 1074  
 Delta R.T. -0.012 min  
 Lab File: BN016740.D  
 Acq: 05 Oct 2021 10:36

**Instrument :**  
 BNA\_N  
**ClientSampled :**  
 SSTDCCC0.4EC

Tgt Ion:172 Resp: 81229

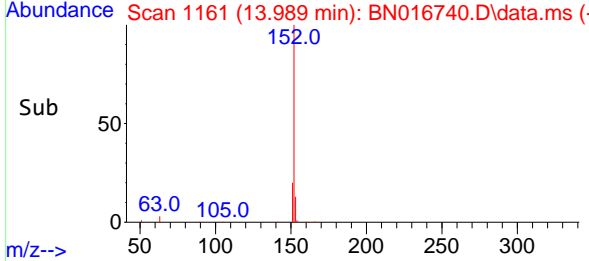
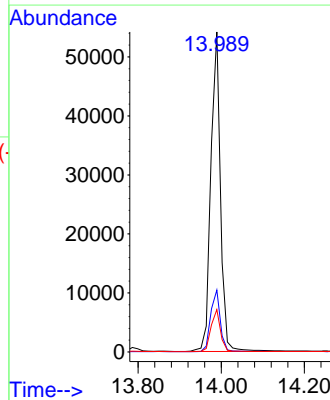
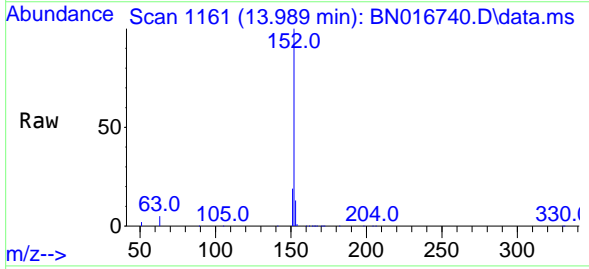
| Ion | Ratio | Lower | Upper |
|-----|-------|-------|-------|
| 172 | 100   |       |       |
| 171 | 35.8  | 26.9  | 40.3  |
| 170 | 24.4  | 17.4  | 26.0  |

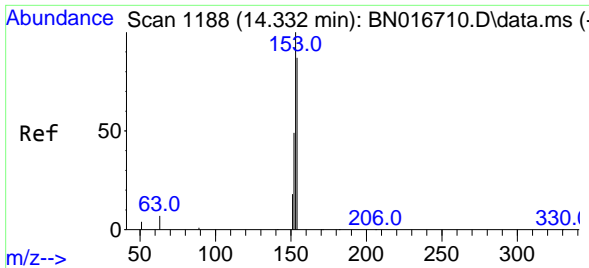


#16  
 Acenaphthylene  
 Concen: 0.37 ng  
 RT: 13.989 min Scan# 1161  
 Delta R.T. 0.000 min  
 Lab File: BN016740.D  
 Acq: 05 Oct 2021 10:36

Tgt Ion:152 Resp: 86733

| Ion | Ratio | Lower | Upper |
|-----|-------|-------|-------|
| 152 | 100   |       |       |
| 151 | 19.5  | 15.5  | 23.3  |
| 153 | 13.1  | 10.4  | 15.6  |

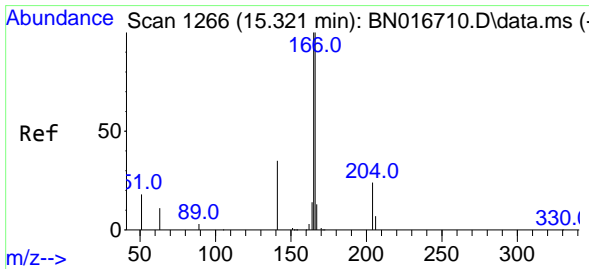
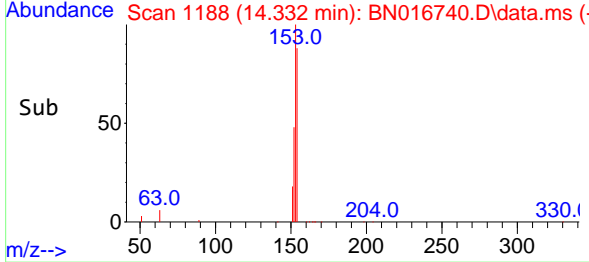
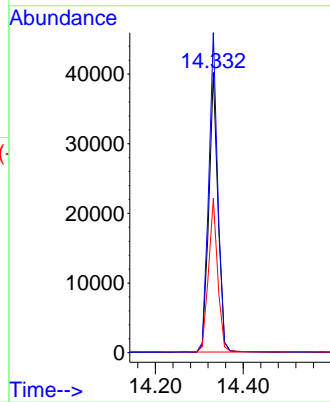
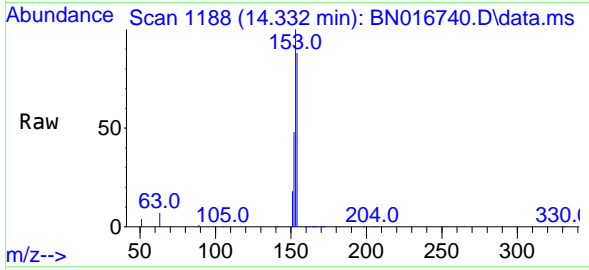




#17  
 Acenaphthene  
 Concen: 0.38 ng  
 RT: 14.332 min Scan# 1188  
 Delta R.T. 0.000 min  
 Lab File: BN016740.D  
 Acq: 05 Oct 2021 10:36

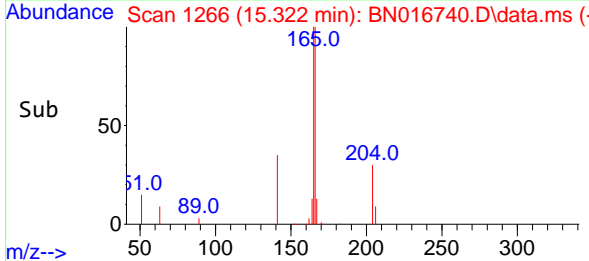
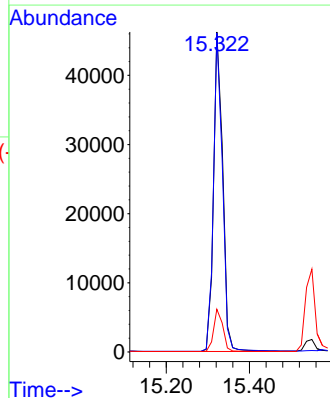
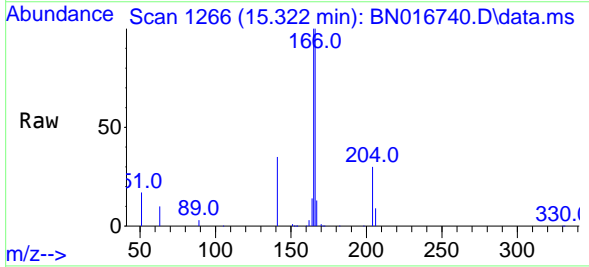
Instrument :  
 BNA\_N  
 ClientSampleId :  
 SSTDCCC0.4EC

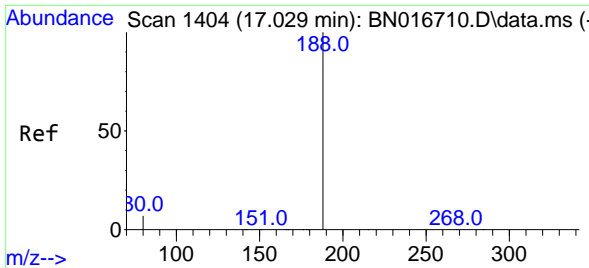
Tgt Ion:154 Resp: 58192  
 Ion Ratio Lower Upper  
 154 100  
 153 113.7 90.1 135.1  
 152 55.2 43.6 65.4



#18  
 Fluorene  
 Concen: 0.38 ng  
 RT: 15.322 min Scan# 1266  
 Delta R.T. 0.001 min  
 Lab File: BN016740.D  
 Acq: 05 Oct 2021 10:36

Tgt Ion:166 Resp: 70674  
 Ion Ratio Lower Upper  
 166 100  
 165 97.7 78.1 117.1  
 167 13.4 10.7 16.1



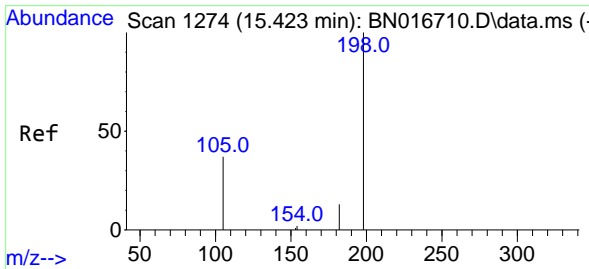
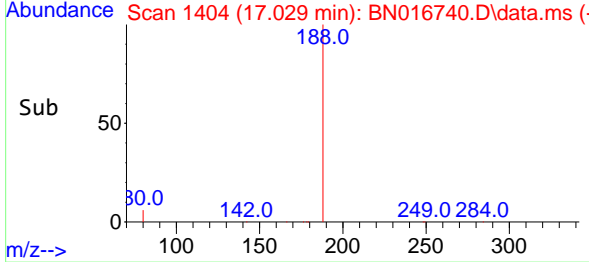
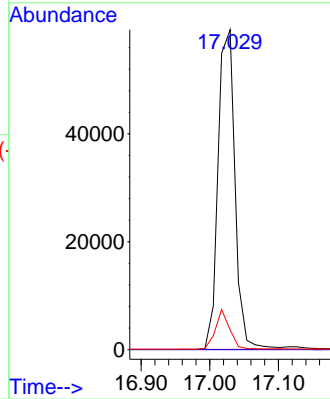
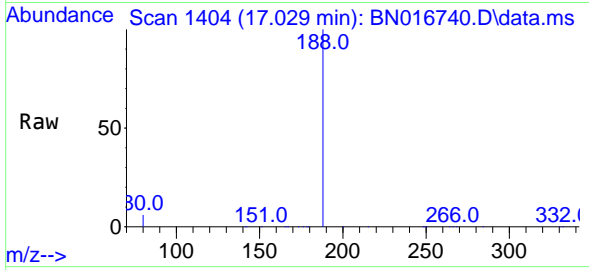


#19  
 Phenanthrene-d10  
 Concen: 0.40 ng  
 RT: 17.029 min Scan# 1404  
 Delta R.T. 0.000 min  
 Lab File: BN016740.D  
 Acq: 05 Oct 2021 10:36

Instrument :  
 BNA\_N  
 ClientSampleId :  
 SSTDCCC0.4EC

Tgt Ion:188 Resp: 101328

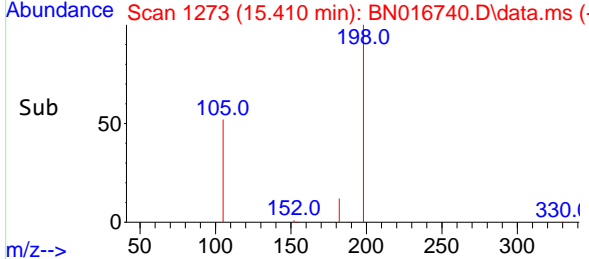
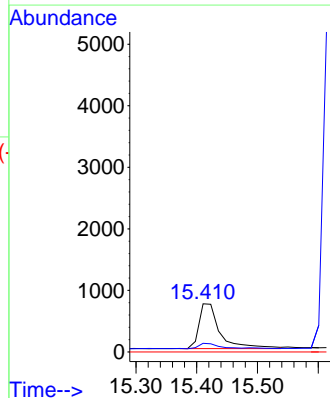
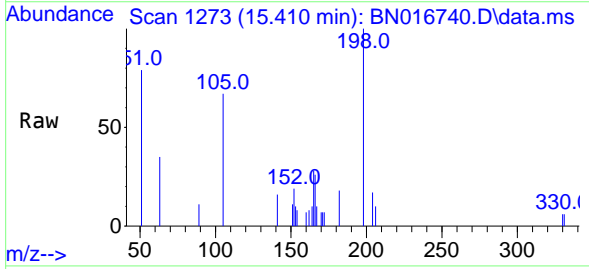
| Ion | Ratio | Lower | Upper |
|-----|-------|-------|-------|
| 188 | 100   |       |       |
| 94  | 0.0   | 0.0   | 0.0   |
| 80  | 6.2   | 5.8   | 8.8   |

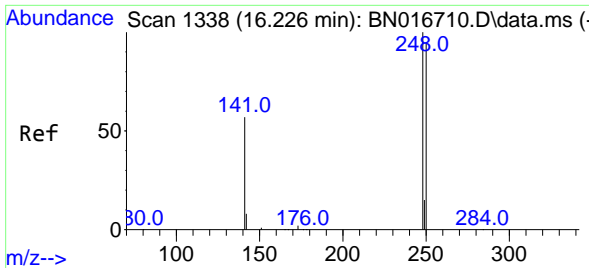


#20  
 4,6-Dinitro-2-methylphenol  
 Concen: 0.47 ng  
 RT: 15.410 min Scan# 1273  
 Delta R.T. -0.013 min  
 Lab File: BN016740.D  
 Acq: 05 Oct 2021 10:36

Tgt Ion:198 Resp: 1756

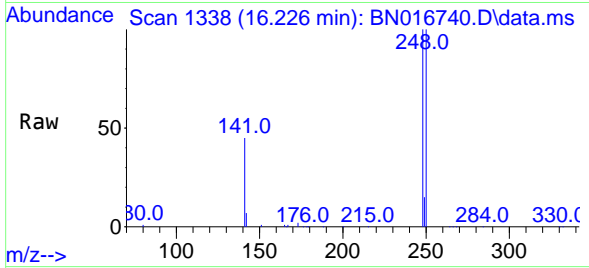
| Ion | Ratio | Lower | Upper |
|-----|-------|-------|-------|
| 198 | 100   |       |       |
| 182 | 17.9  | 26.2  | 39.2# |
| 77  | 0.0   | 0.0   | 0.0   |



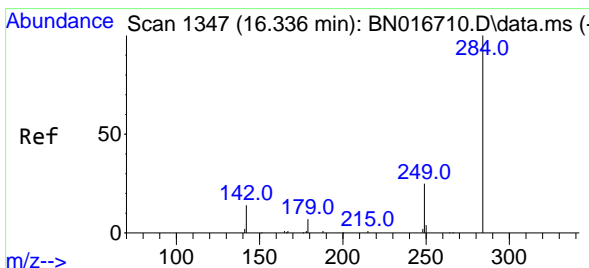
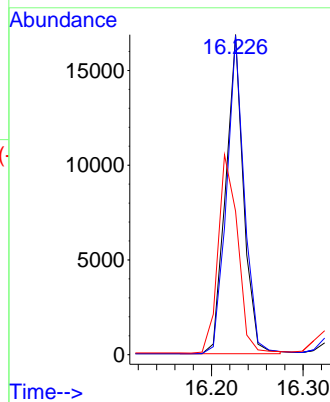
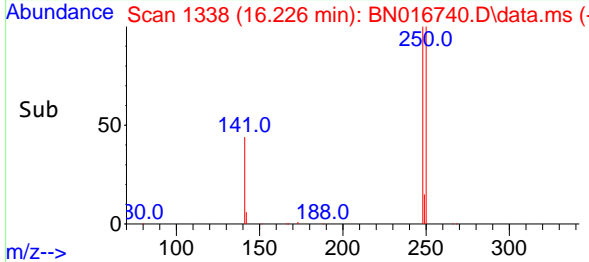


#21  
 4-Bromophenyl-phenylether  
 Concen: 0.37 ng  
 RT: 16.226 min Scan# 1338  
 Delta R.T. 0.000 min  
 Lab File: BN016740.D  
 Acq: 05 Oct 2021 10:36

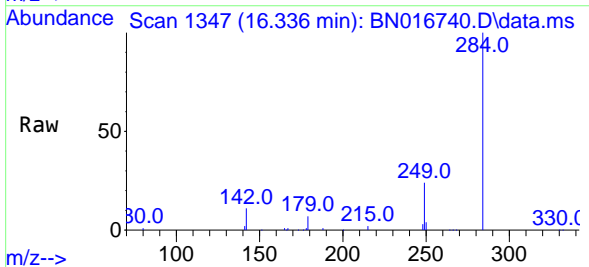
Instrument :  
 BNA\_N  
 ClientSampleId :  
 SSTDCCC0.4EC



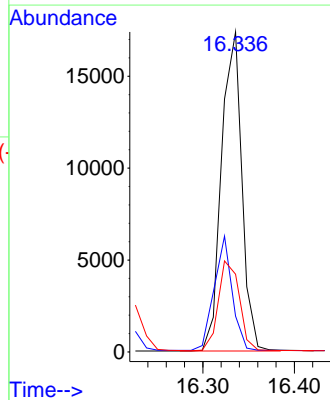
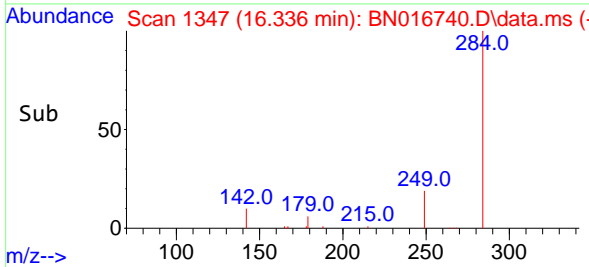
Tgt Ion:248 Resp: 22867  
 Ion Ratio Lower Upper  
 248 100  
 250 99.7 76.2 114.4  
 141 44.8 45.6 68.4#

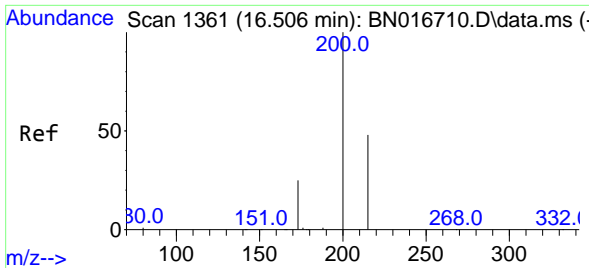


#22  
 Hexachlorobenzene  
 Concen: 0.38 ng  
 RT: 16.336 min Scan# 1347  
 Delta R.T. 0.000 min  
 Lab File: BN016740.D  
 Acq: 05 Oct 2021 10:36



Tgt Ion:284 Resp: 26871  
 Ion Ratio Lower Upper  
 284 100  
 142 31.7 25.8 38.6  
 249 29.0 23.3 34.9



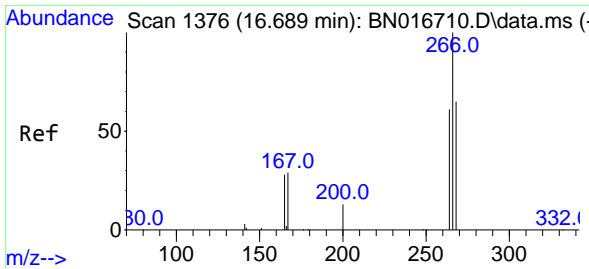
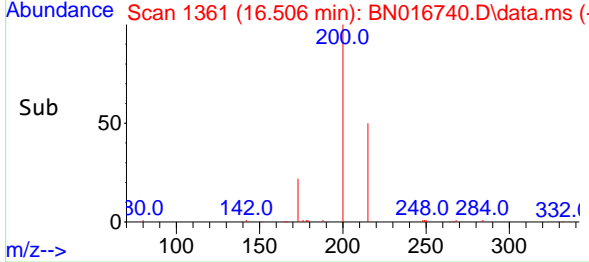
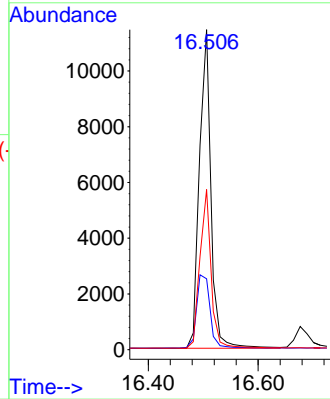
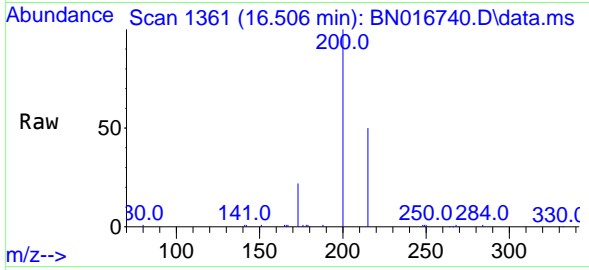


#23  
 Atrazine  
 Concen: 0.34 ng  
 RT: 16.506 min Scan# 1361  
 Delta R.T. 0.000 min  
 Lab File: BN016740.D  
 Acq: 05 Oct 2021 10:36

Instrument :  
 BNA\_N  
 ClientSampleId :  
 SSTDCCC0.4EC

Tgt Ion: 200 Resp: 16704

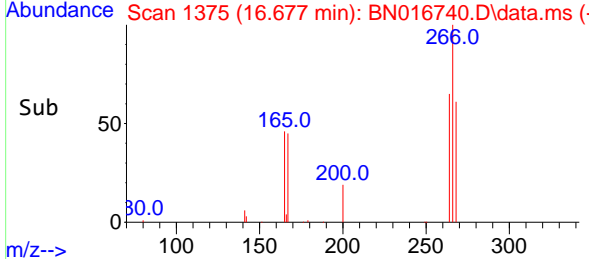
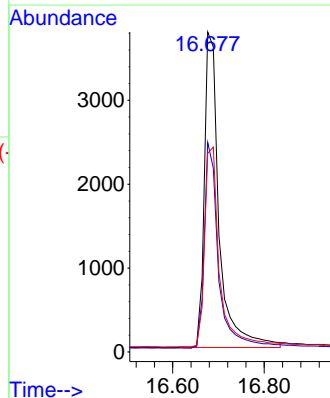
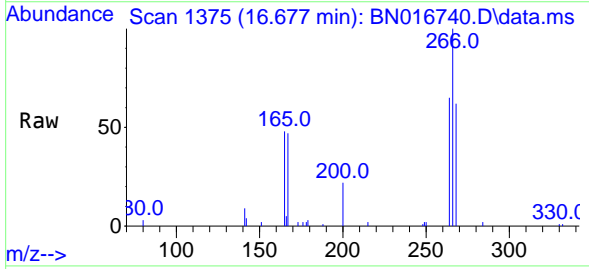
| Ion | Ratio | Lower | Upper |
|-----|-------|-------|-------|
| 200 | 100   |       |       |
| 173 | 22.2  | 20.1  | 30.1  |
| 215 | 50.0  | 38.8  | 58.2  |

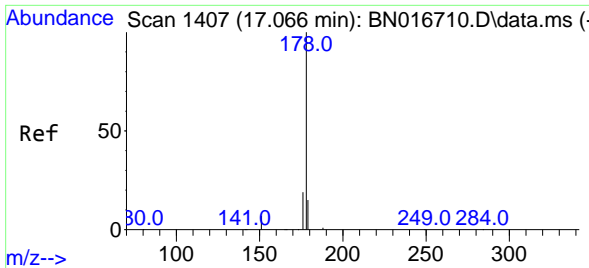


#24  
 Pentachlorophenol  
 Concen: 0.59 ng  
 RT: 16.677 min Scan# 1375  
 Delta R.T. -0.012 min  
 Lab File: BN016740.D  
 Acq: 05 Oct 2021 10:36

Tgt Ion: 266 Resp: 8457

| Ion | Ratio | Lower | Upper |
|-----|-------|-------|-------|
| 266 | 100   |       |       |
| 264 | 62.7  | 49.3  | 73.9  |
| 268 | 63.8  | 51.8  | 77.8  |



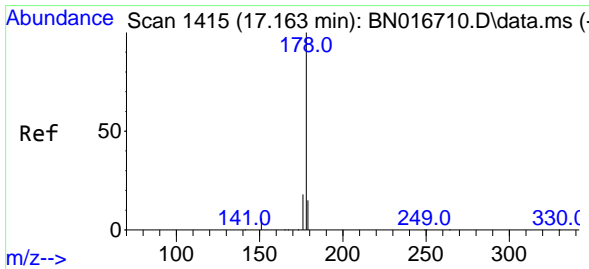
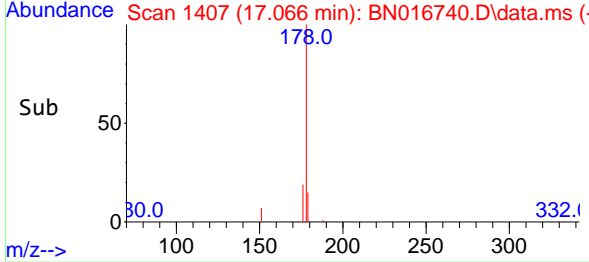
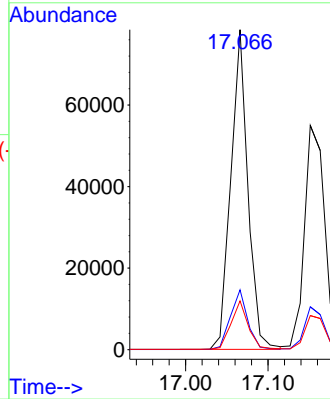
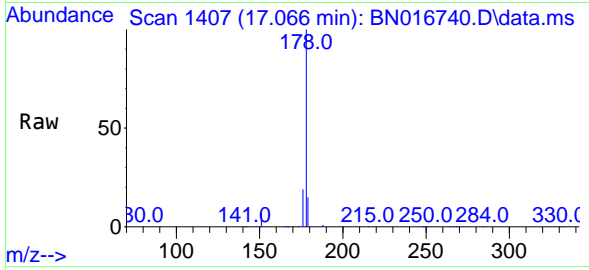


#25  
 Phenanthrene  
 Concen: 0.38 ng  
 RT: 17.066 min Scan# 1407  
 Delta R.T. 0.000 min  
 Lab File: BN016740.D  
 Acq: 05 Oct 2021 10:36

Instrument :  
 BNA\_N  
 ClientSampleId :  
 SSTDCCC0.4EC

Tgt Ion:178 Resp: 113254

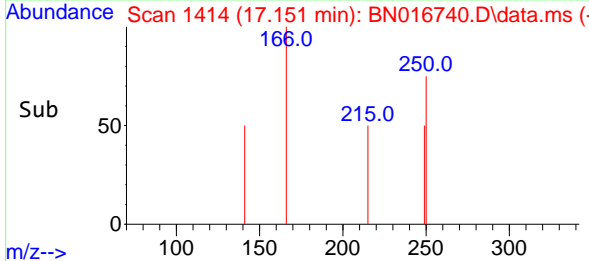
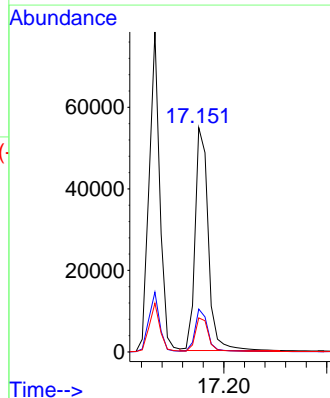
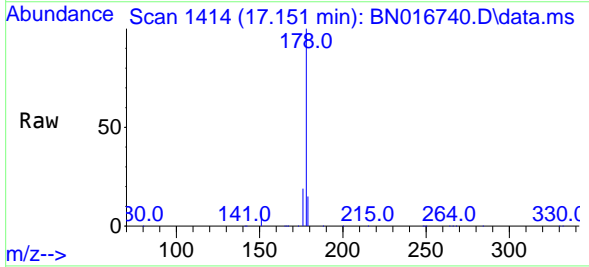
| Ion | Ratio | Lower | Upper |
|-----|-------|-------|-------|
| 178 | 100   |       |       |
| 176 | 18.8  | 15.0  | 22.6  |
| 179 | 15.4  | 12.4  | 18.6  |

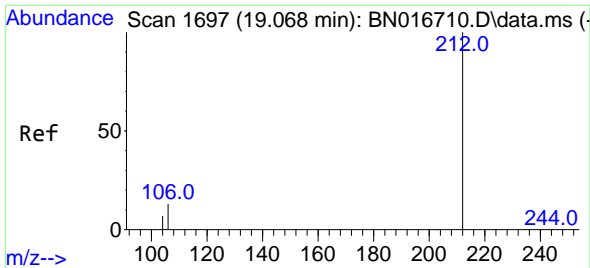


#26  
 Anthracene  
 Concen: 0.36 ng  
 RT: 17.151 min Scan# 1414  
 Delta R.T. -0.012 min  
 Lab File: BN016740.D  
 Acq: 05 Oct 2021 10:36

Tgt Ion:178 Resp: 97070

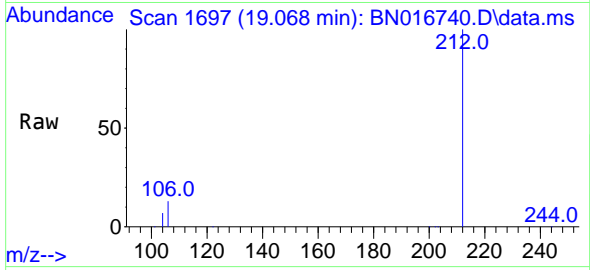
| Ion | Ratio | Lower | Upper |
|-----|-------|-------|-------|
| 178 | 100   |       |       |
| 176 | 18.4  | 14.5  | 21.7  |
| 179 | 15.3  | 12.2  | 18.4  |



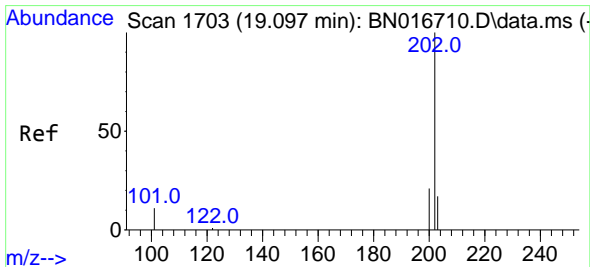
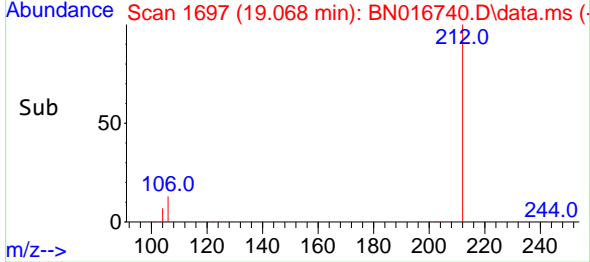
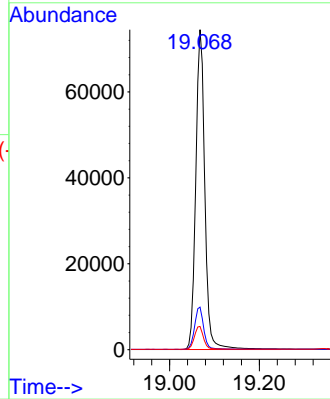


#27  
 Fluoranthene-d10  
 Concen: 0.38 ng  
 RT: 19.068 min Scan# 1697  
 Delta R.T. 0.000 min  
 Lab File: BN016740.D  
 Acq: 05 Oct 2021 10:36

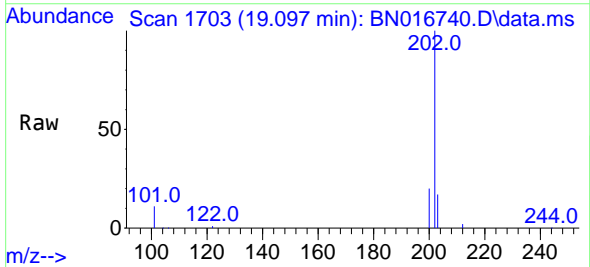
Instrument :  
 BNA\_N  
 ClientSampleId :  
 SSTDCCC0.4EC



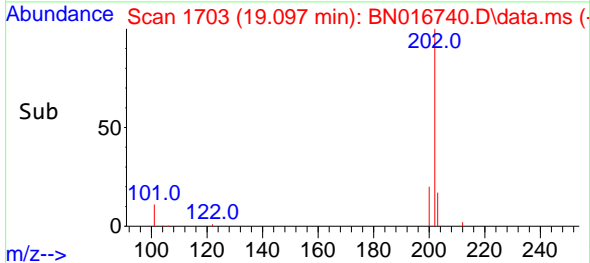
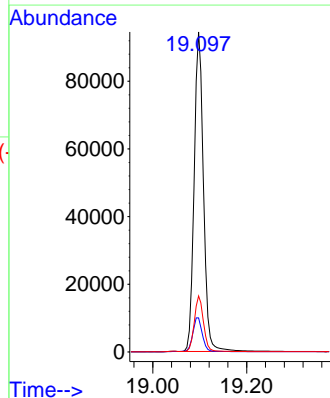
Tgt Ion:212 Resp: 104750  
 Ion Ratio Lower Upper  
 212 100  
 106 13.3 10.6 16.0  
 104 7.2 5.8 8.8



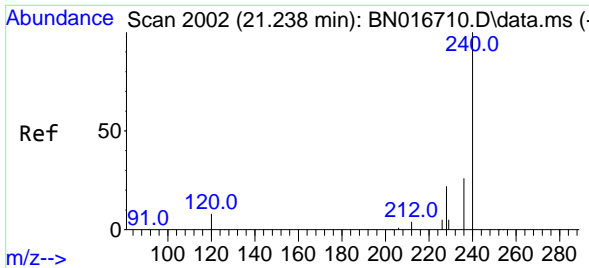
#28  
 Fluoranthene  
 Concen: 0.39 ng  
 RT: 19.097 min Scan# 1703  
 Delta R.T. 0.000 min  
 Lab File: BN016740.D  
 Acq: 05 Oct 2021 10:36



Tgt Ion:202 Resp: 130172  
 Ion Ratio Lower Upper  
 202 100  
 101 11.1 8.9 13.3  
 203 17.2 13.8 20.8





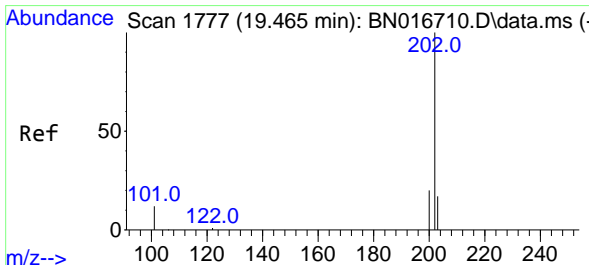
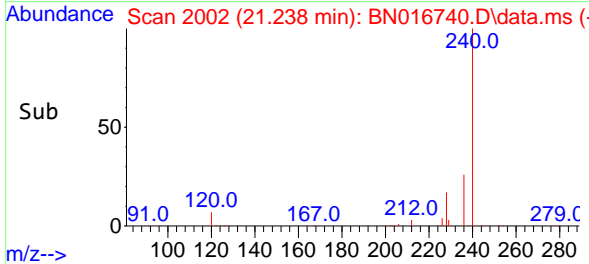
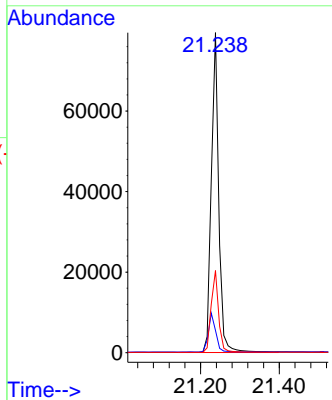
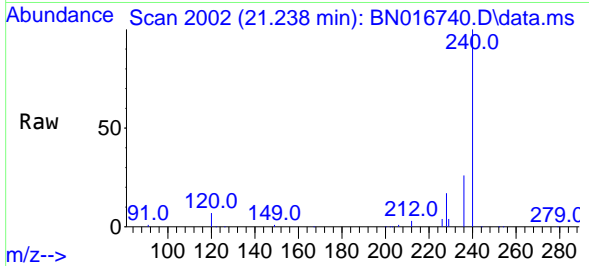


#29  
 Chrysene-d12  
 Concen: 0.40 ng  
 RT: 21.238 min Scan# 2002  
 Delta R.T. 0.000 min  
 Lab File: BN016740.D  
 Acq: 05 Oct 2021 10:36

**Instrument :**  
 BNA\_N  
**ClientSampleId :**  
 SSTDCCC0.4EC

Tgt Ion:240 Resp: 104040

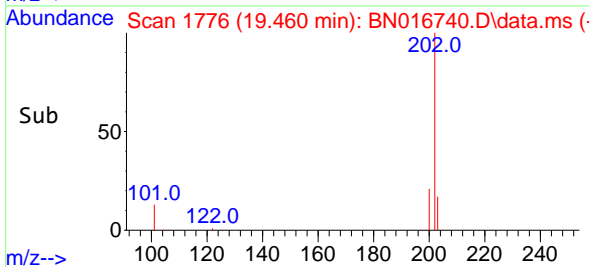
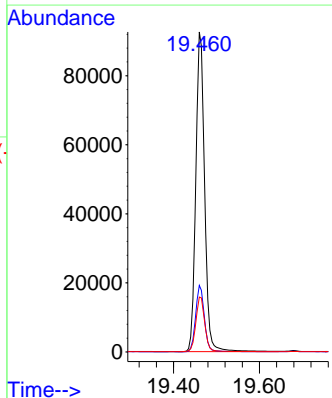
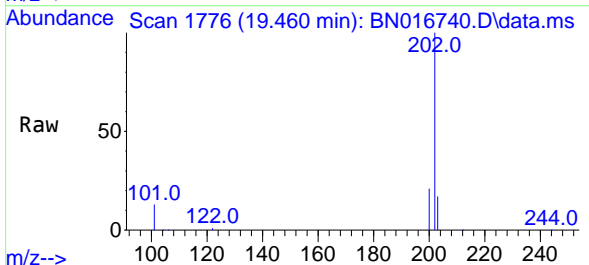
| Ion | Ratio | Lower | Upper |
|-----|-------|-------|-------|
| 240 | 100   |       |       |
| 120 | 7.0   | 6.6   | 10.0  |
| 236 | 25.7  | 20.7  | 31.1  |

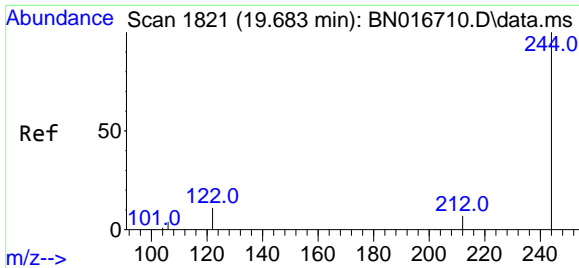


#30  
 Pyrene  
 Concen: 0.38 ng  
 RT: 19.460 min Scan# 1776  
 Delta R.T. -0.005 min  
 Lab File: BN016740.D  
 Acq: 05 Oct 2021 10:36

Tgt Ion:202 Resp: 131569

| Ion | Ratio | Lower | Upper |
|-----|-------|-------|-------|
| 202 | 100   |       |       |
| 200 | 20.7  | 16.5  | 24.7  |
| 203 | 17.5  | 13.9  | 20.9  |



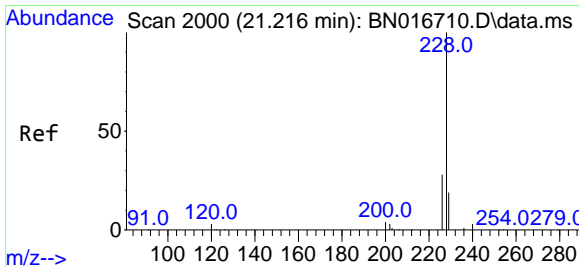
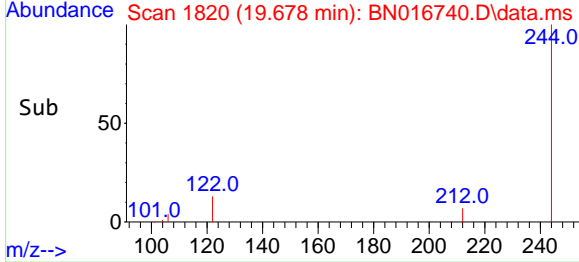
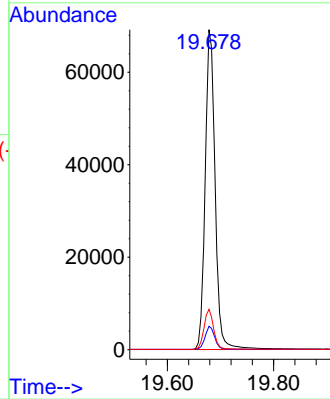
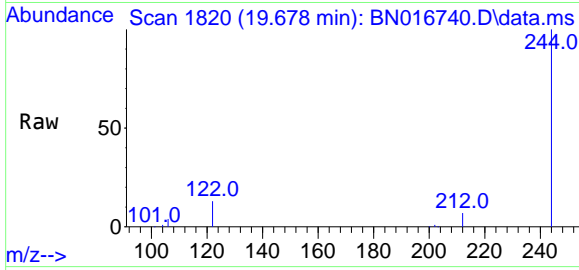


#31  
 Terphenyl-d14  
 Concen: 0.38 ng  
 RT: 19.678 min Scan# 1820  
 Delta R.T. -0.005 min  
 Lab File: BN016740.D  
 Acq: 05 Oct 2021 10:36

Instrument :  
 BNA\_N  
 ClientSampleId :  
 SSTDCCC0.4EC

Tgt Ion:244 Resp: 89479

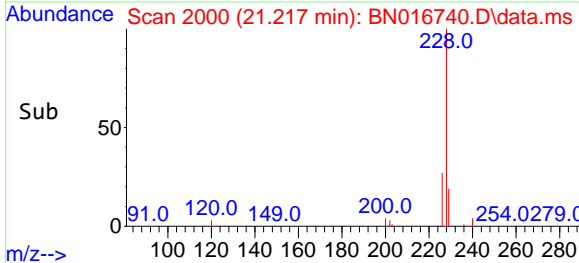
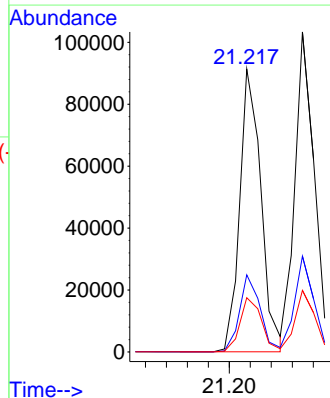
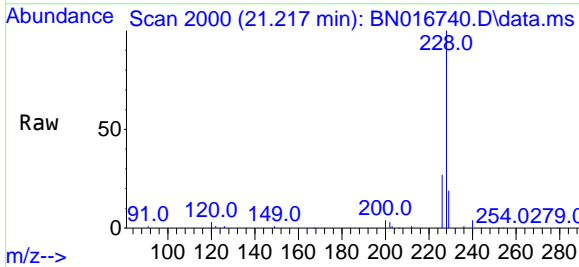
| Ion | Ratio | Lower | Upper |
|-----|-------|-------|-------|
| 244 | 100   |       |       |
| 212 | 7.3   | 5.8   | 8.6   |
| 122 | 12.6  | 8.9   | 13.3  |

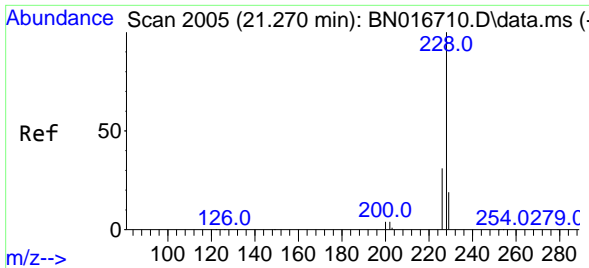


#32  
 Benzo(a)anthracene  
 Concen: 0.40 ng  
 RT: 21.217 min Scan# 2000  
 Delta R.T. 0.000 min  
 Lab File: BN016740.D  
 Acq: 05 Oct 2021 10:36

Tgt Ion:228 Resp: 128403

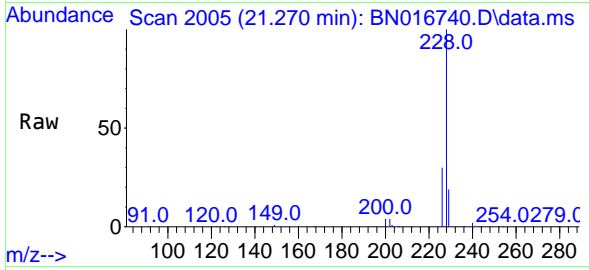
| Ion | Ratio | Lower | Upper |
|-----|-------|-------|-------|
| 228 | 100   |       |       |
| 226 | 27.3  | 22.3  | 33.5  |
| 229 | 19.2  | 15.4  | 23.0  |



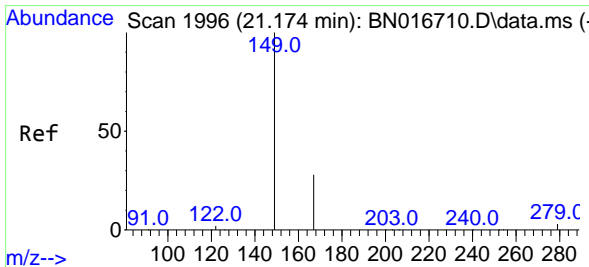
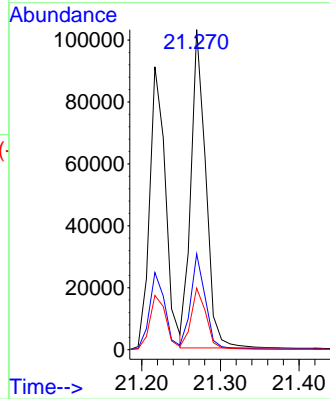
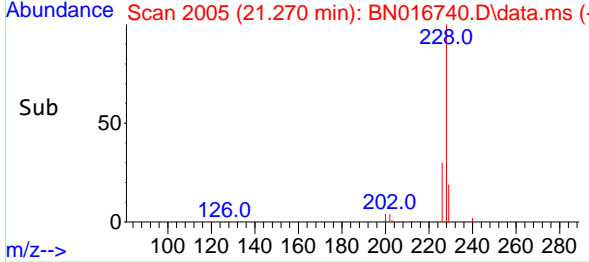


#33  
 Chrysene  
 Concen: 0.41 ng  
 RT: 21.270 min Scan# 2005  
 Delta R.T. 0.000 min  
 Lab File: BN016740.D  
 Acq: 05 Oct 2021 10:36

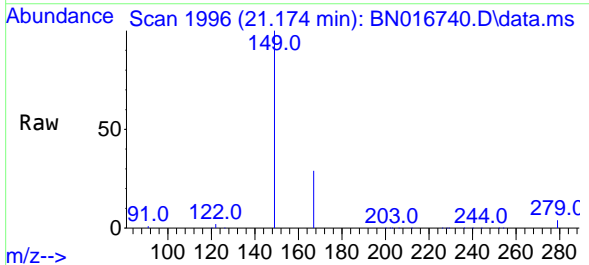
Instrument :  
 BNA\_N  
 ClientSampled :  
 SSTDCCC0.4EC



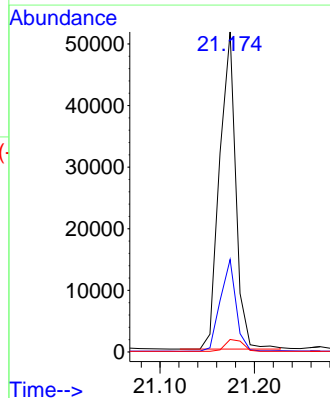
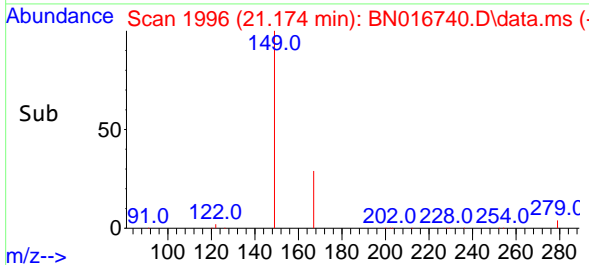
Tgt Ion:228 Resp: 134591  
 Ion Ratio Lower Upper  
 228 100  
 226 29.9 24.2 36.4  
 229 19.3 15.4 23.0

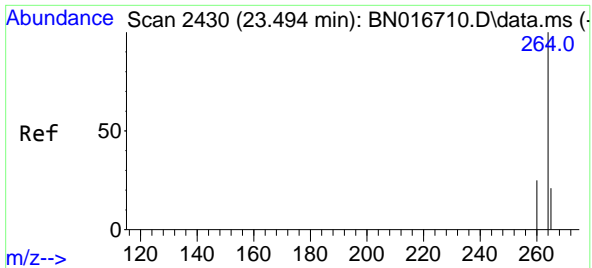


#34  
 Bis(2-ethylhexyl)phthalate  
 Concen: 0.31 ng  
 RT: 21.174 min Scan# 1996  
 Delta R.T. 0.000 min  
 Lab File: BN016740.D  
 Acq: 05 Oct 2021 10:36



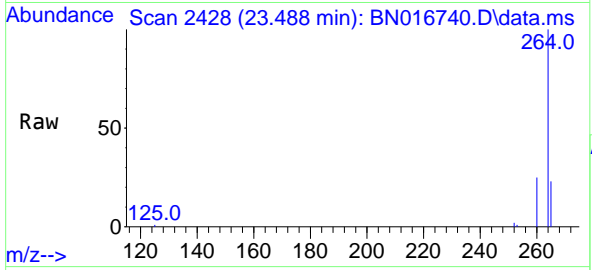
Tgt Ion:149 Resp: 61550  
 Ion Ratio Lower Upper  
 149 100  
 167 27.9 22.2 33.4  
 279 4.2 3.4 5.2



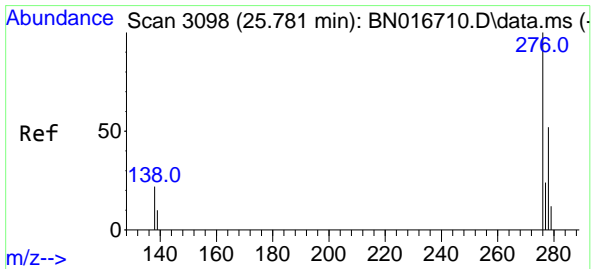
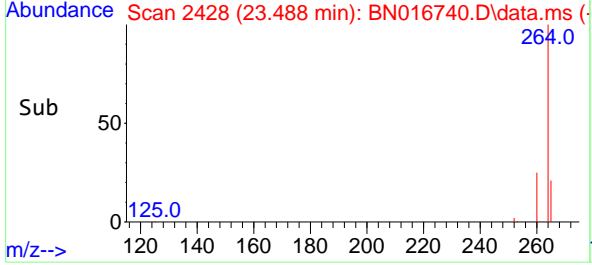
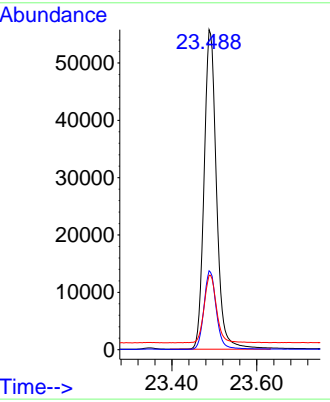


#35  
 Perylene-d12  
 Concen: 0.40 ng  
 RT: 23.488 min Scan# 2428  
 Delta R.T. -0.007 min  
 Lab File: BN016740.D  
 Acq: 05 Oct 2021 10:36

**Instrument :**  
 BNA\_N  
**ClientSampled :**  
 SSTDCCC0.4EC

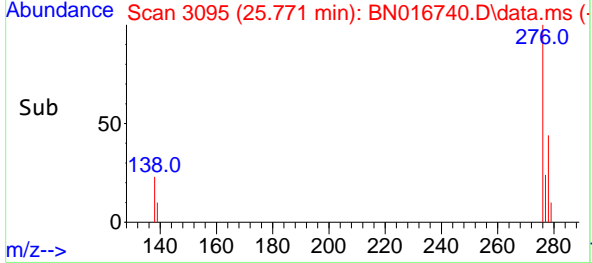
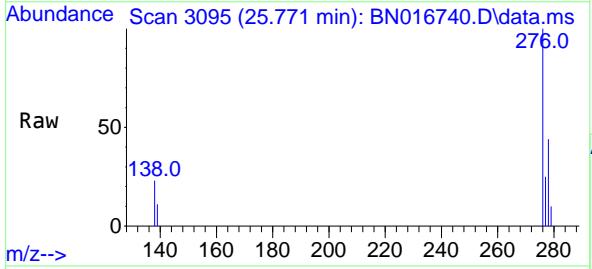
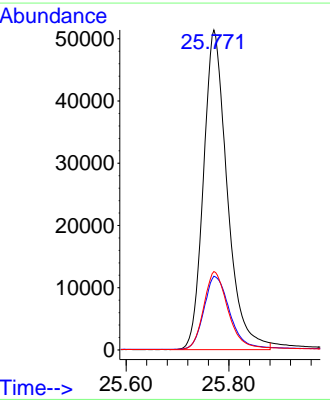


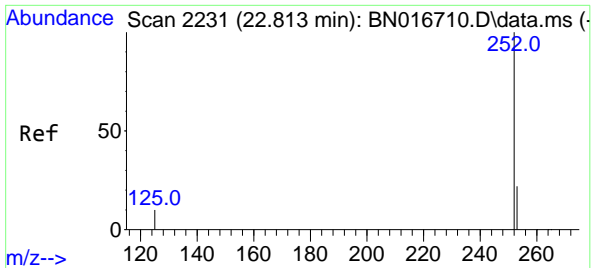
Tgt Ion:264 Resp: 112545  
 Ion Ratio Lower Upper  
 264 100  
 260 24.7 19.8 29.6  
 265 23.3 20.3 30.5



#36  
 Indeno(1,2,3-cd)pyrene  
 Concen: 0.46 ng  
 RT: 25.771 min Scan# 3095  
 Delta R.T. -0.010 min  
 Lab File: BN016740.D  
 Acq: 05 Oct 2021 10:36

Tgt Ion:276 Resp: 164679  
 Ion Ratio Lower Upper  
 276 100  
 138 24.8 19.2 28.8  
 277 25.0 20.0 30.0



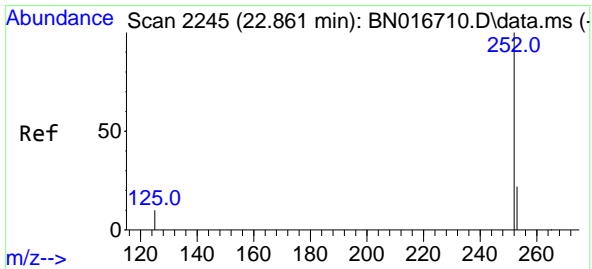
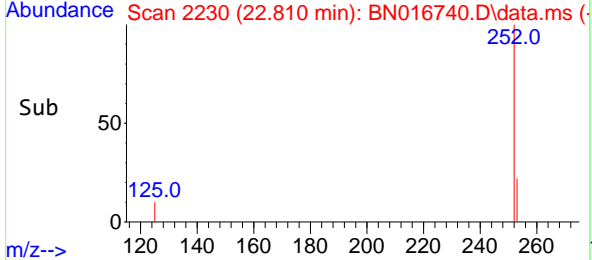
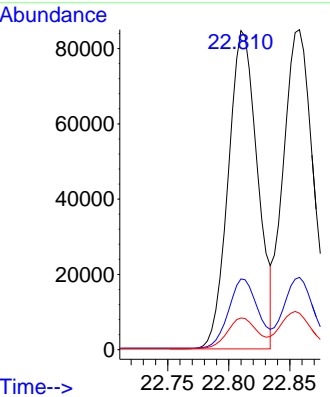
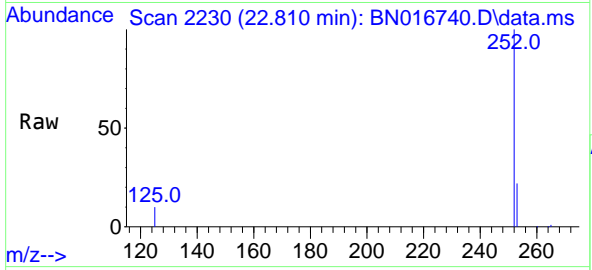


#37  
 Benzo(b)fluoranthene  
 Concen: 0.39 ng  
 RT: 22.810 min Scan# 2230  
 Delta R.T. -0.003 min  
 Lab File: BN016740.D  
 Acq: 05 Oct 2021 10:36

Instrument :  
 BNA\_N  
 ClientSampled :  
 SSTDCCC0.4EC

Tgt Ion:252 Resp: 141299

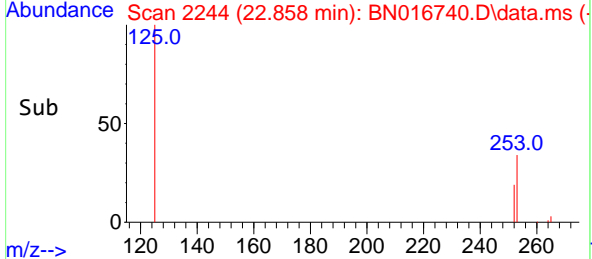
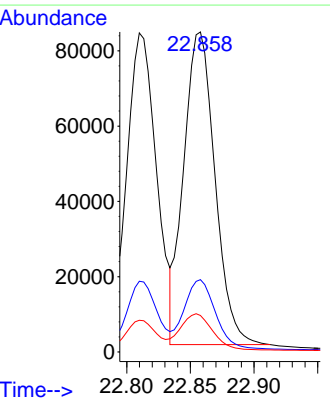
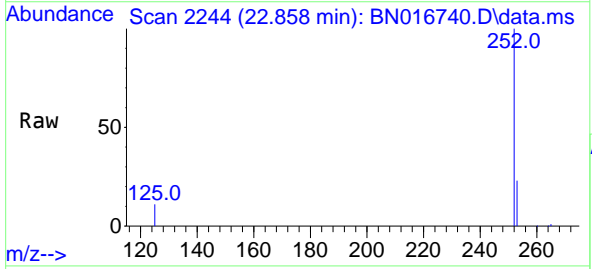
| Ion | Ratio | Lower | Upper |
|-----|-------|-------|-------|
| 252 | 100   |       |       |
| 253 | 22.1  | 17.8  | 26.8  |
| 125 | 9.9   | 8.3   | 12.5  |

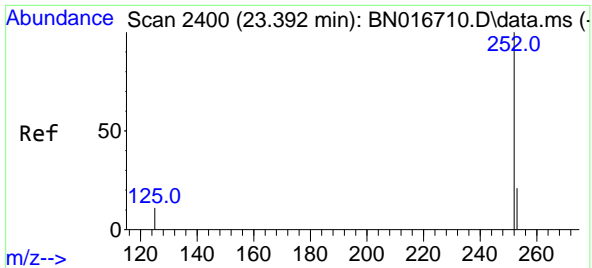


#38  
 Benzo(k)fluoranthene  
 Concen: 0.41 ng  
 RT: 22.858 min Scan# 2244  
 Delta R.T. -0.003 min  
 Lab File: BN016740.D  
 Acq: 05 Oct 2021 10:36

Tgt Ion:252 Resp: 141648

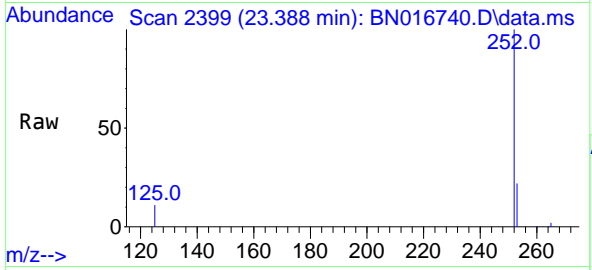
| Ion | Ratio | Lower | Upper |
|-----|-------|-------|-------|
| 252 | 100   |       |       |
| 253 | 22.6  | 17.8  | 26.8  |
| 125 | 11.4  | 8.5   | 12.7  |



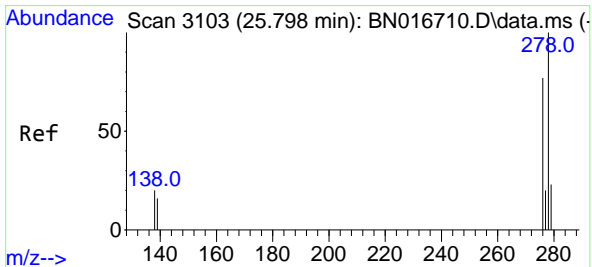
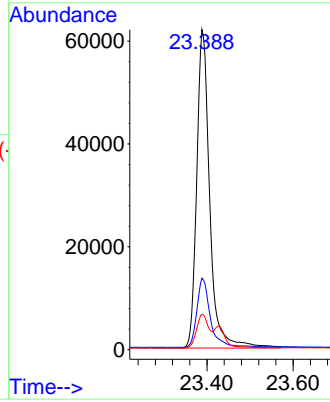
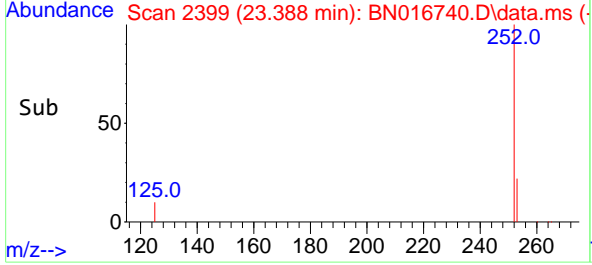


#39  
 Benzo(a)pyrene  
 Concen: 0.40 ng  
 RT: 23.388 min Scan# 2399  
 Delta R.T. -0.003 min  
 Lab File: BN016740.D  
 Acq: 05 Oct 2021 10:36

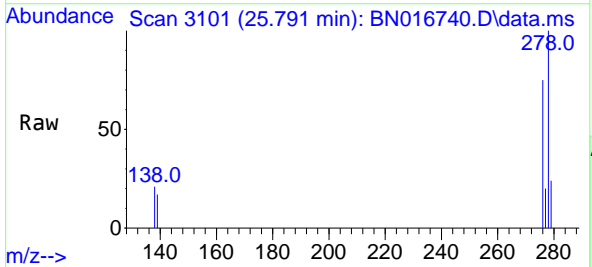
Instrument :  
 BNA\_N  
 ClientSampleId :  
 SSTDCCC0.4EC



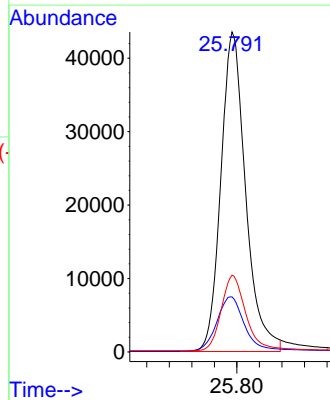
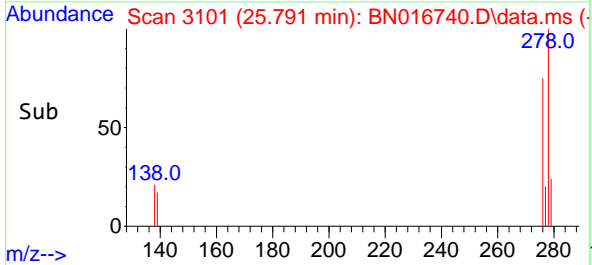
Tgt Ion:252 Resp: 129955  
 Ion Ratio Lower Upper  
 252 100  
 253 22.3 17.9 26.9  
 125 11.0 9.4 14.2

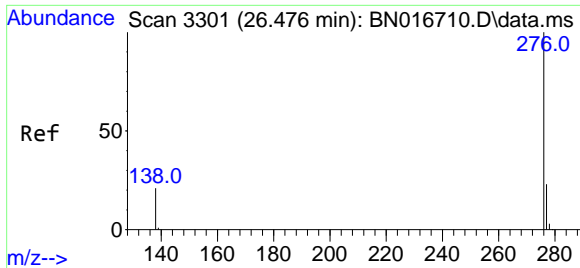


#40  
 Dibenzo(a,h)anthracene  
 Concen: 0.47 ng  
 RT: 25.791 min Scan# 3101  
 Delta R.T. -0.007 min  
 Lab File: BN016740.D  
 Acq: 05 Oct 2021 10:36



Tgt Ion:278 Resp: 132506  
 Ion Ratio Lower Upper  
 278 100  
 139 17.2 13.1 19.7  
 279 24.0 19.3 28.9





#41  
 Benzo(g,h,i)perylene  
 Concen: 0.45 ng  
 RT: 26.469 min Scan# 3299  
 Delta R.T. -0.007 min  
 Lab File: BN016740.D  
 Acq: 05 Oct 2021 10:36

Instrument :  
 BNA\_N  
 ClientSampled :  
 SSTDCCC0.4EC

Tgt Ion:276 Resp: 141791  
 Ion Ratio Lower Upper  
 276 100  
 277 24.0 19.0 28.4  
 138 21.1 17.0 25.6

