

Data Path : Z:\svoasrv\HPCHEM1\BNA_N\Data\BN100421\
 Data File : BN016765.D
 Acq On : 06 Oct 2021 05:41
 Operator : CG/JU
 Sample : M3966-02
 Misc :
 ALS Vial : 23 Sample Multiplier: 1

Instrument :
 BNA_N
 ClientSampleId :
 S-831-J-SO-2-2.5-092721

Manual Integrations
 APPROVED

mohammad
 10/7/2021 8:31:52 AM

Quant Time: Oct 06 06:57:55 2021
 Quant Method : Z:\SVOASRV\HPCHEM1\BNA_N\METHODS\8270-SIM-BN100421.M
 Quant Title : ASP BNA STANDARDS FOR 5 POINT CALIBRATION
 QLast Update : Mon Oct 04 17:52:33 2021
 Response via : Initial Calibration

Compound	R.T.	QIon	Response	Conc	Units	Dev(Min)	
Internal Standards							
1) 1,4-Dichlorobenzene-d4	7.642	152	26494	0.40	ng	0.00	
7) Naphthalene-d8	10.407	136	118773	0.40	ng	# 0.00	
13) Acenaphthene-d10	14.269	164	64828	0.40	ng	0.00	
19) Phenanthrene-d10	17.018	188	125086	0.40	ng	#-0.01	
29) Chrysene-d12	21.227	240	120902	0.40	ng	#-0.01	
35) Perylene-d12	23.484	264	133812	0.40	ng	0.00	
System Monitoring Compounds							
4) 2-Fluorophenol	5.282	112	19430	0.29	ng	0.03	
5) Phenol-d6	6.831	99	23227	0.31	ng	0.00	
8) Nitrobenzene-d5	8.784	82	26459	0.32	ng	0.00	
11) 2-Methylnaphthalene-d10	12.003	152	65111	0.37	ng	0.00	
14) 2,4,6-Tribromophenol	15.766	330	8648	0.35	ng	-0.01	
15) 2-Fluorobiphenyl	12.886	172	81792	0.32	ng	-0.01	
27) Fluoranthene-d10	19.063	212	122080	0.36	ng	0.00	
31) Terphenyl-d14	19.678	244	91929	0.34	ng	0.00	
							Qvalue
9) Naphthalene	10.457	128	23270	0.07	ng		98
12) 2-Methylnaphthalene	12.074	142	9898	0.05	ng		98
16) Acenaphthylene	13.990	152	23127	0.08	ng		97
17) Acenaphthene	14.332	154	12849	0.07	ng		95
18) Fluorene	15.322	166	18264	0.08	ng	#	95
24) Pentachlorophenol	16.677	266	651	0.35	ng		95
25) Phenanthrene	17.066	178	330246m	0.90	ng		
26) Anthracene	17.151	178	77596	0.24	ng	#	94
28) Fluoranthene	19.093	202	853716	2.09	ng		100
30) Pyrene	19.460	202	772973	1.94	ng	#	94
32) Benzo(a)anthracene	21.217	228	534494	1.43	ng		98
33) Chrysene	21.270	228	508520	1.34	ng		96
34) Bis(2-ethylhexyl)phtha...	21.164	149	127944	0.56	ng	#	89
36) Indeno(1,2,3-cd)pyrene	25.764	276	321398	0.76	ng		97
37) Benzo(b)fluoranthene	22.810	252	775970	1.79	ng		97
38) Benzo(k)fluoranthene	22.851	252	253116m	0.61	ng		
39) Benzo(a)pyrene	23.385	252	502208	1.30	ng		98
40) Dibenzo(a,h)anthracene	25.774	278	78074	0.23	ng	#	82
41) Benzo(g,h,i)perylene	26.462	276	310945	0.82	ng		98

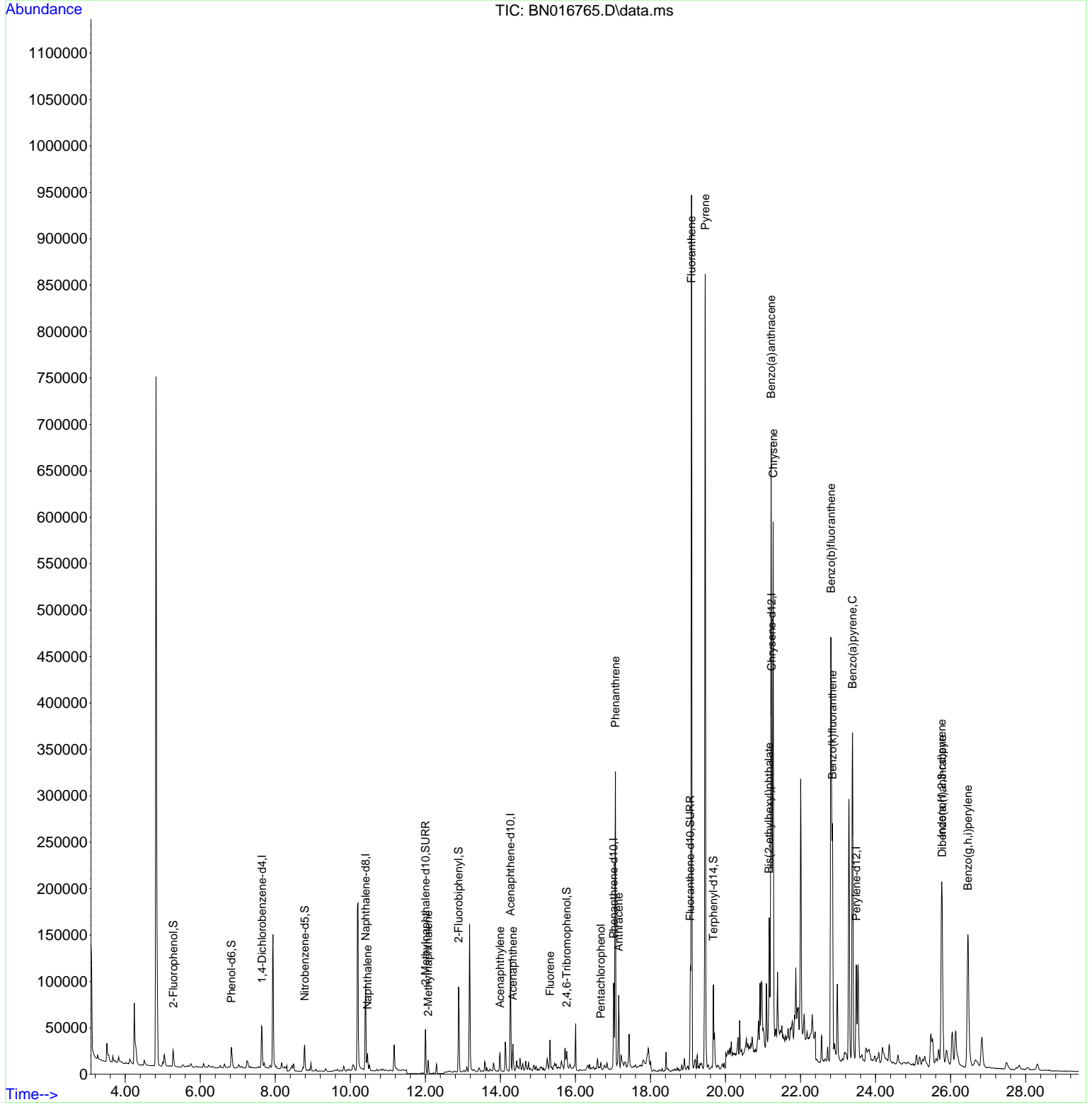
(#) = qualifier out of range (m) = manual integration (+) = signals summed

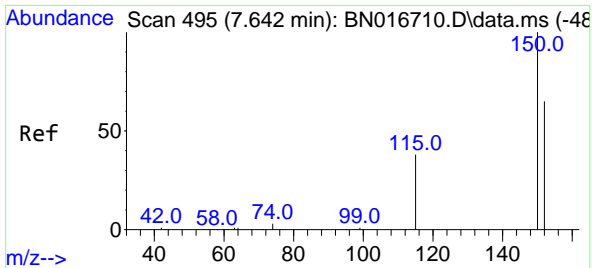
Data Path : Z:\svoasrv\HPCHEM1\BNA_N\Data\BN100421\
 Data File : BN016765.D
 Acq On : 06 Oct 2021 05:41
 Operator : CG/JU
 Sample : M3966-02
 Misc :
 ALS Vial : 23 Sample Multiplier: 1

Instrument :
 BNA_N
 ClientSampleId :
 S-831-J-SO-2-2.5-092721

Manual Integrations
APPROVED
 mohammad
 10/7/2021 8:31:52 AM

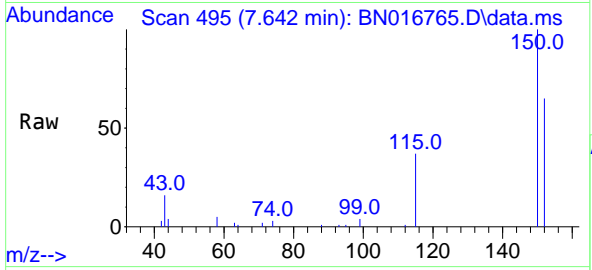
Quant Time: Oct 06 06:57:55 2021
 Quant Method : Z:\SVOASRV\HPCHEM1\BNA_N\METHODS\8270-SIM-BN100421.M
 Quant Title : ASP BNA STANDARDS FOR 5 POINT CALIBRATION
 QLast Update : Mon Oct 04 17:52:33 2021
 Response via : Initial Calibration





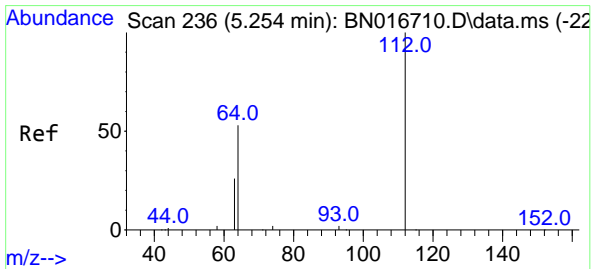
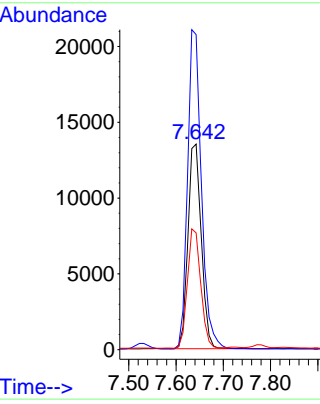
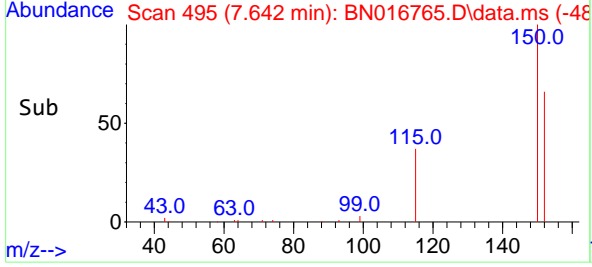
#1
 1,4-Dichlorobenzene-d4
 Concen: 0.40 ng
 RT: 7.642 min Scan# 495
 Delta R.T. 0.000 min
 Lab File: BN016765.D
 Acq: 06 Oct 2021 05:41

Instrument :
 BNA_N
ClientSampled :
 S-831-J-SO-2-2.5-092721

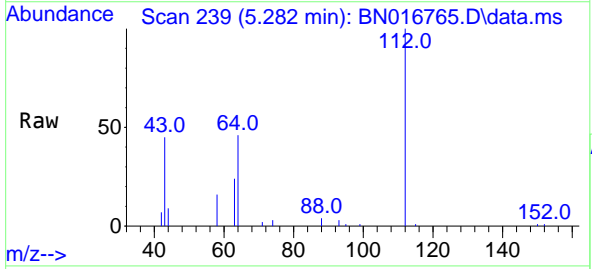


Tgt Ion:152 Resp: 26494
 Ion Ratio Lower Upper
 152 100
 150 153.2 123.3 184.9
 115 56.8 47.0 70.6

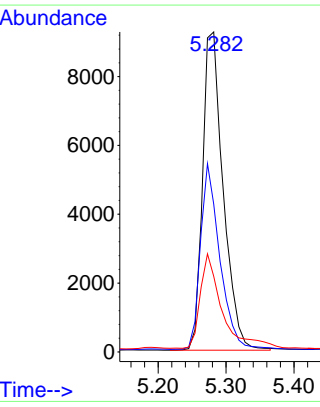
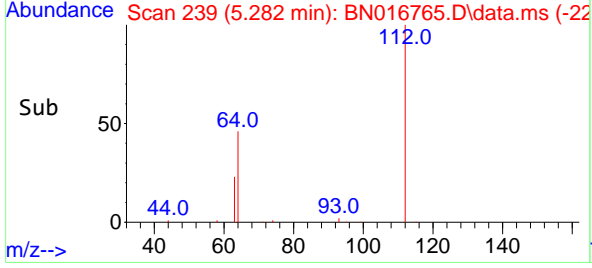
Manual Integrations
APPROVED
 mohammad
 10/7/2021 8:31:52 AM

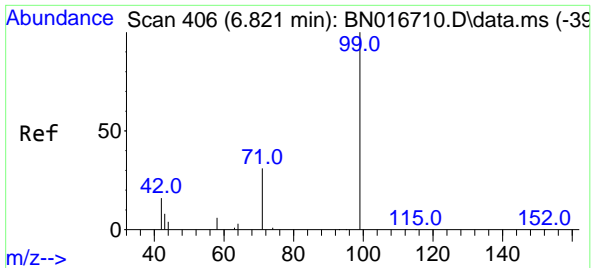


#4
 2-Fluorophenol
 Concen: 0.29 ng
 RT: 5.282 min Scan# 239
 Delta R.T. 0.028 min
 Lab File: BN016765.D
 Acq: 06 Oct 2021 05:41



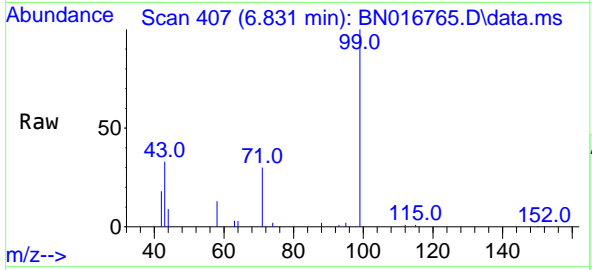
Tgt Ion:112 Resp: 19430
 Ion Ratio Lower Upper
 112 100
 64 54.8 42.9 64.3
 63 30.9 21.5 32.3





#5
 Phenol-d6
 Concen: 0.31 ng
 RT: 6.831 min Scan# 407
 Delta R.T. 0.010 min
 Lab File: BN016765.D
 Acq: 06 Oct 2021 05:41

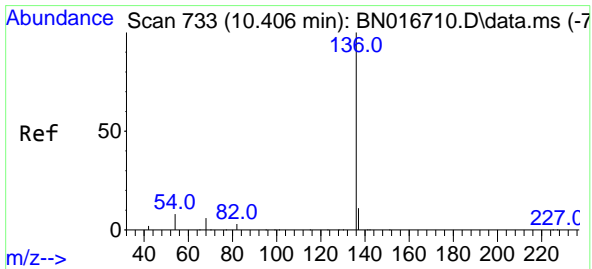
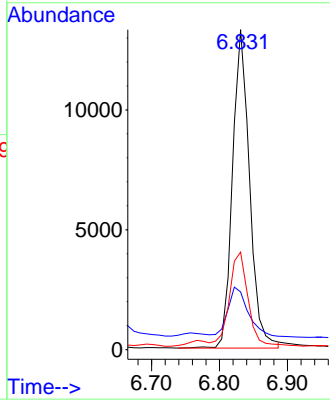
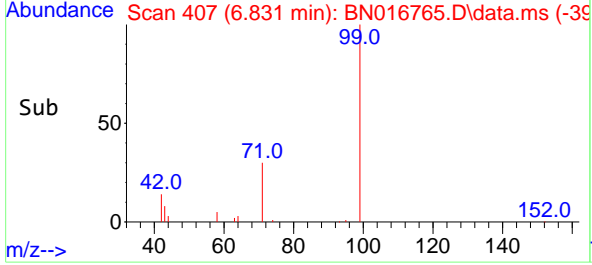
Instrument :
 BNA_N
ClientSampled :
 S-831-J-SO-2-2.5-092721



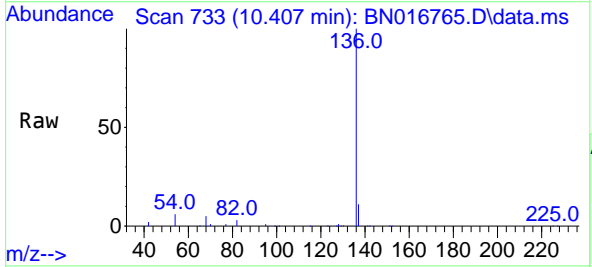
Tgt Ion: 99 Resp: 23227

Ion	Ratio	Lower	Upper
99	100		
42	18.1	13.4	20.2
71	30.5	24.0	36.0

Manual Integrations
APPROVED
 mohammad
 10/7/2021 8:31:52 AM

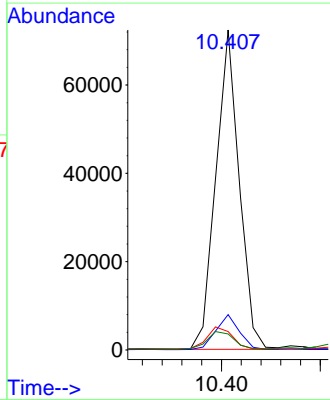
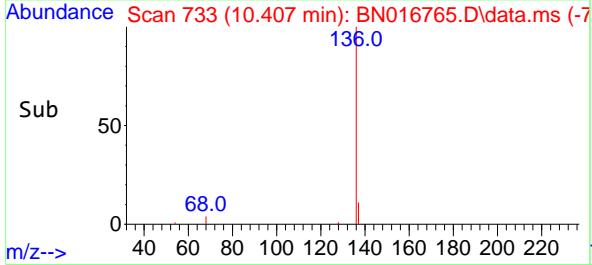


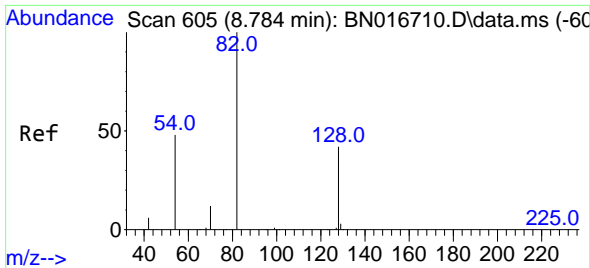
#7
 Naphthalene-d8
 Concen: 0.40 ng
 RT: 10.407 min Scan# 733
 Delta R.T. 0.000 min
 Lab File: BN016765.D
 Acq: 06 Oct 2021 05:41



Tgt Ion: 136 Resp: 118773

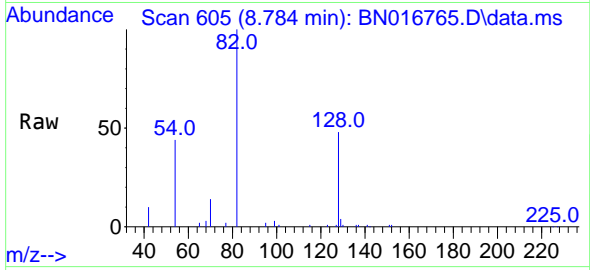
Ion	Ratio	Lower	Upper
136	100		
137	11.1	8.9	13.3
54	5.7	6.5	9.7#
68	5.0	5.3	7.9#





#8
 Nitrobenzene-d5
 Concen: 0.32 ng
 RT: 8.784 min Scan# 605
 Delta R.T. 0.000 min
 Lab File: BN016765.D
 Acq: 06 Oct 2021 05:41

Instrument :
 BNA_N
 ClientSampleId :
 S-831-J-SO-2-2.5-092721

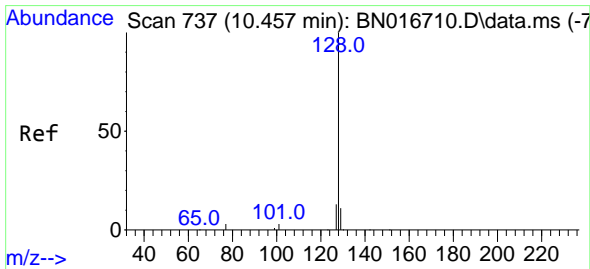
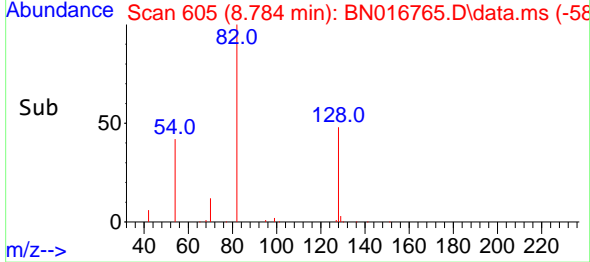
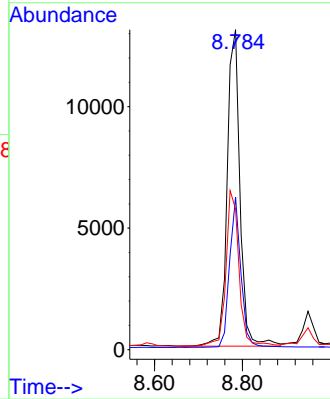


Tgt Ion: 82 Resp: 26459

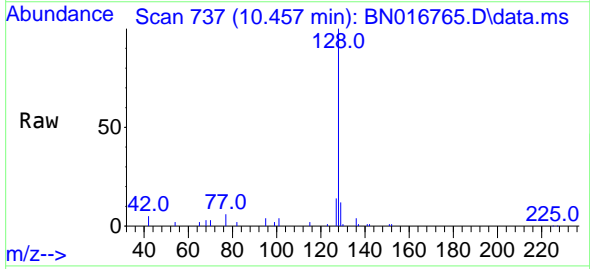
Ion	Ratio	Lower	Upper
82	100		
128	47.7	33.8	50.6
54	44.0	38.5	57.7

Manual Integrations
 APPROVED

mohammad
 10/7/2021 8:31:52 AM

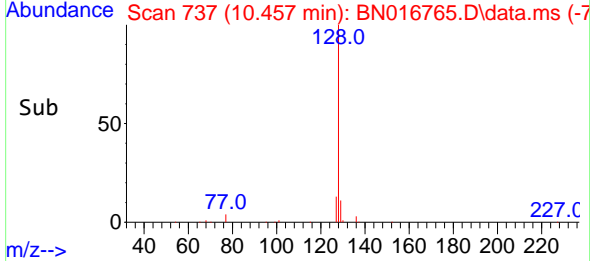
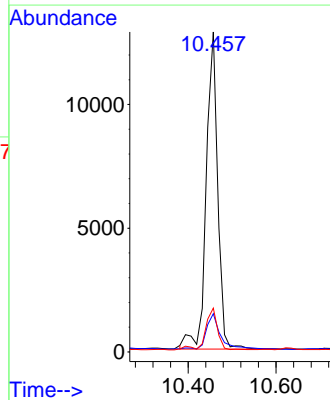


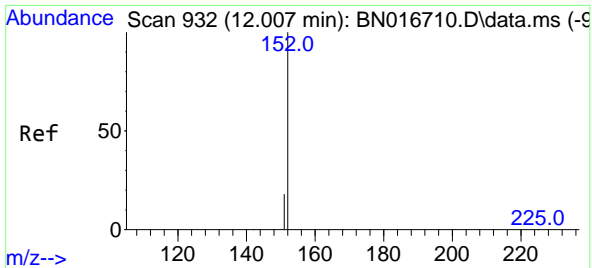
#9
 Naphthalene
 Concen: 0.07 ng
 RT: 10.457 min Scan# 737
 Delta R.T. 0.000 min
 Lab File: BN016765.D
 Acq: 06 Oct 2021 05:41



Tgt Ion: 128 Resp: 23270

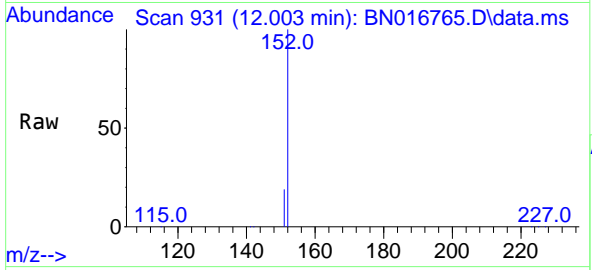
Ion	Ratio	Lower	Upper
128	100		
129	11.9	8.7	13.1
127	13.7	10.3	15.5





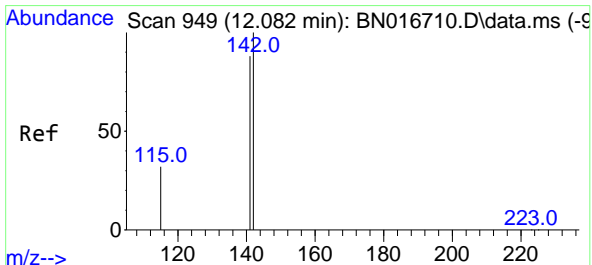
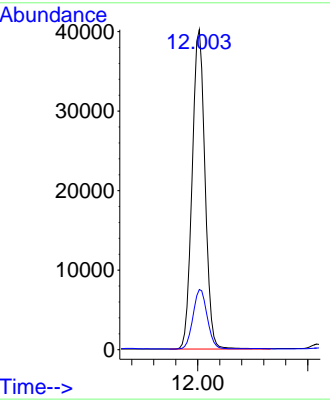
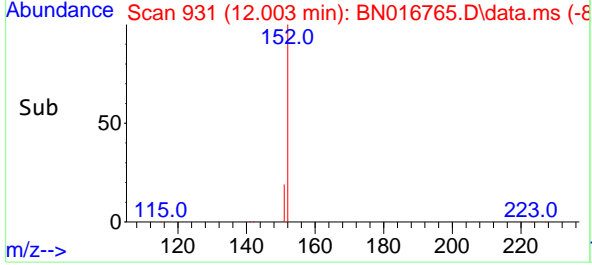
#11
 2-Methylnaphthalene-d10
 Concen: 0.37 ng
 RT: 12.003 min Scan# 931
 Delta R.T. -0.004 min
 Lab File: BN016765.D
 Acq: 06 Oct 2021 05:41

Instrument :
 BNA_N
ClientSampleId :
 S-831-J-SO-2-2.5-092721

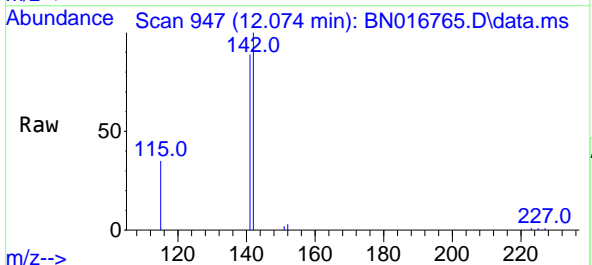


Tgt Ion:152 Resp: 65111
 Ion Ratio Lower Upper
 152 100
 151 20.6 16.2 24.4

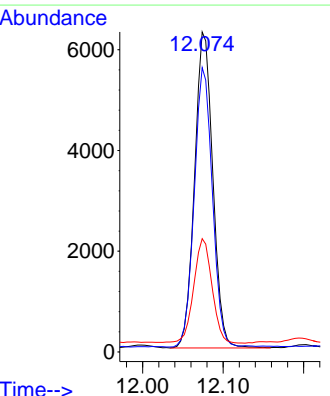
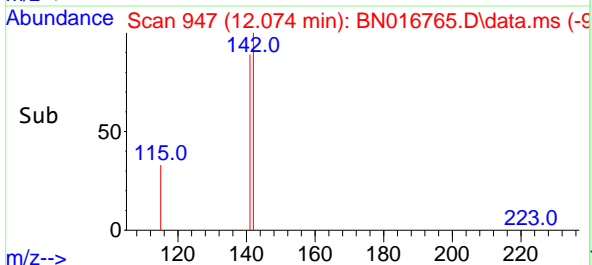
Manual Integrations
APPROVED
 mohammad
 10/7/2021 8:31:52 AM

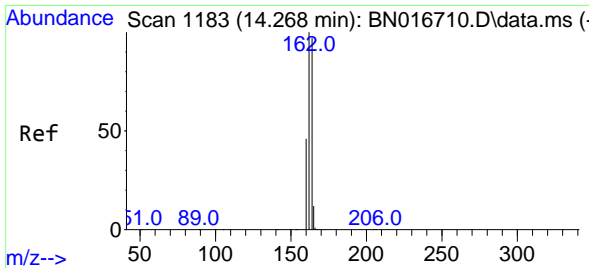


#12
 2-Methylnaphthalene
 Concen: 0.05 ng
 RT: 12.074 min Scan# 947
 Delta R.T. -0.009 min
 Lab File: BN016765.D
 Acq: 06 Oct 2021 05:41



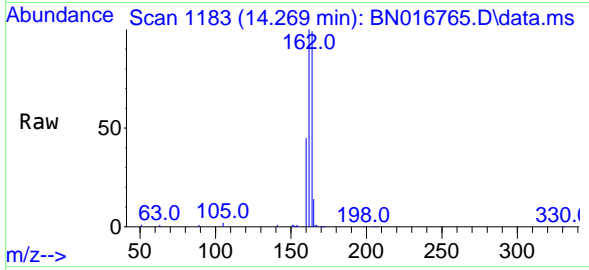
Tgt Ion:142 Resp: 9898
 Ion Ratio Lower Upper
 142 100
 141 88.9 70.6 106.0
 115 35.4 26.1 39.1





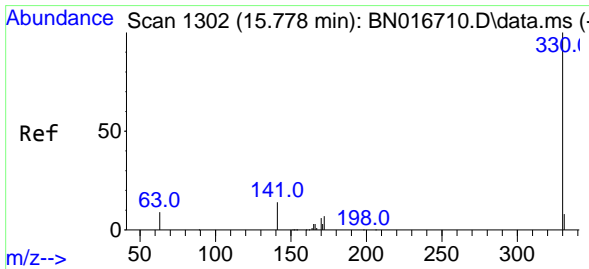
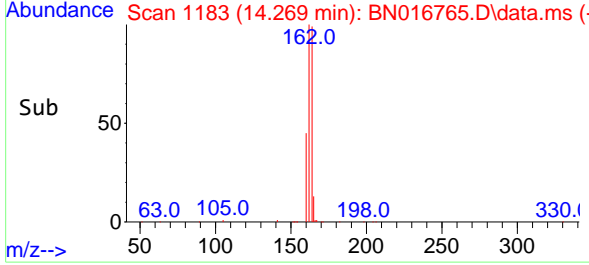
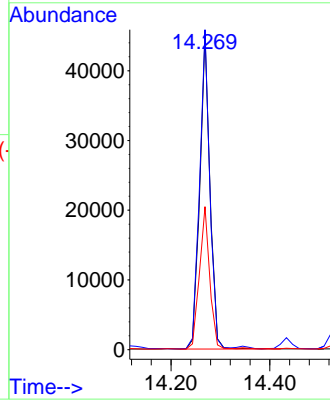
#13
 Acenaphthene-d10
 Concen: 0.40 ng
 RT: 14.269 min Scan# 1183
 Delta R.T. 0.000 min
 Lab File: BN016765.D
 Acq: 06 Oct 2021 05:41

Instrument :
 BNA_N
ClientSampled :
 S-831-J-SO-2-2.5-092721

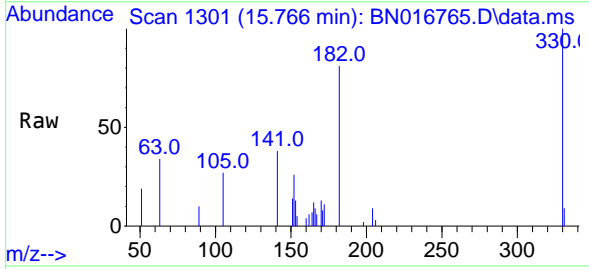


Tgt Ion:164 Resp: 64828
 Ion Ratio Lower Upper
 164 100
 162 101.4 82.6 124.0
 160 45.3 38.2 57.2

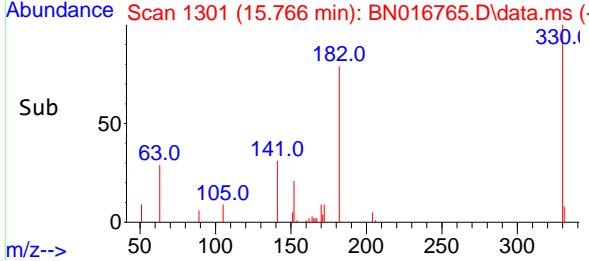
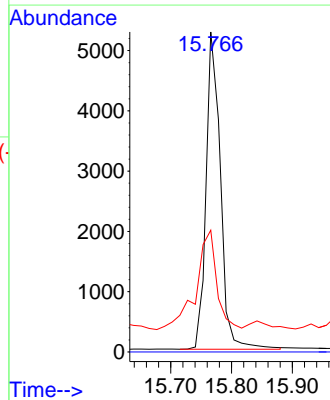
Manual Integrations
APPROVED
 mohammad
 10/7/2021 8:31:52 AM

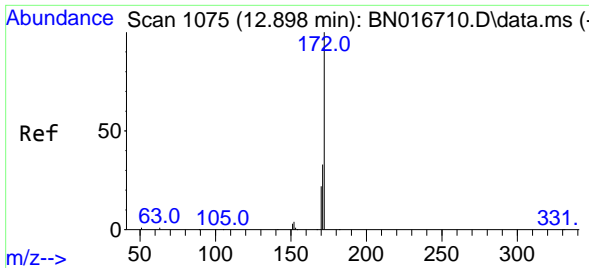


#14
 2,4,6-Tribromophenol
 Concen: 0.35 ng
 RT: 15.766 min Scan# 1301
 Delta R.T. -0.012 min
 Lab File: BN016765.D
 Acq: 06 Oct 2021 05:41



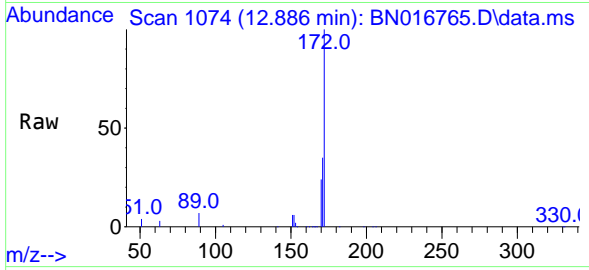
Tgt Ion:330 Resp: 8648
 Ion Ratio Lower Upper
 330 100
 332 0.0 0.0 0.0
 141 42.2 24.2 36.2#





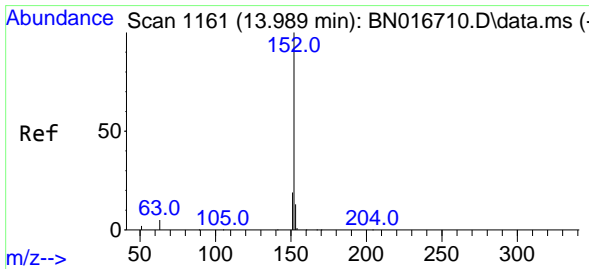
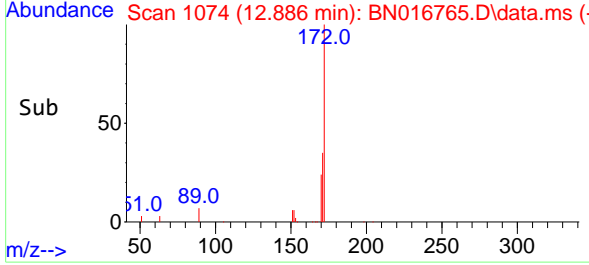
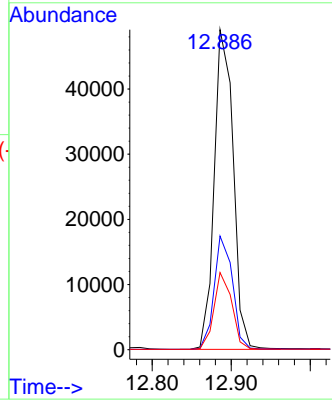
#15
 2-Fluorobiphenyl
 Concen: 0.32 ng
 RT: 12.886 min Scan# 1074
 Delta R.T. -0.012 min
 Lab File: BN016765.D
 Acq: 06 Oct 2021 05:41

Instrument :
 BNA_N
ClientSampled :
 S-831-J-SO-2-2.5-092721

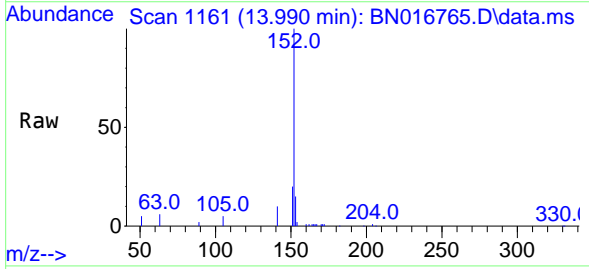


Tgt Ion:172 Resp: 81792
 Ion Ratio Lower Upper
 172 100
 171 35.5 26.9 40.3
 170 24.1 17.4 26.0

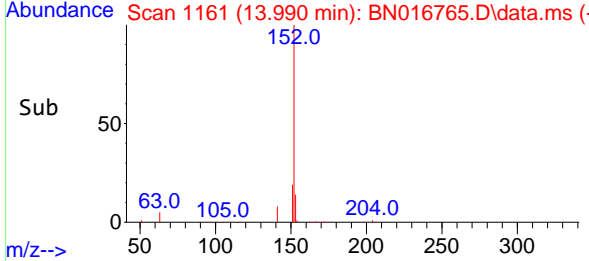
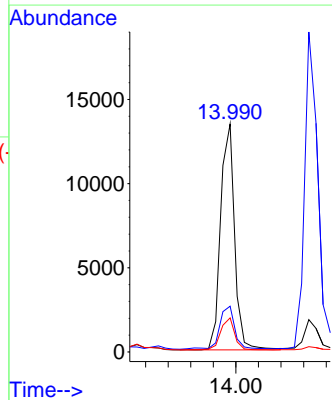
Manual Integrations
APPROVED
 mohammad
 10/7/2021 8:31:52 AM

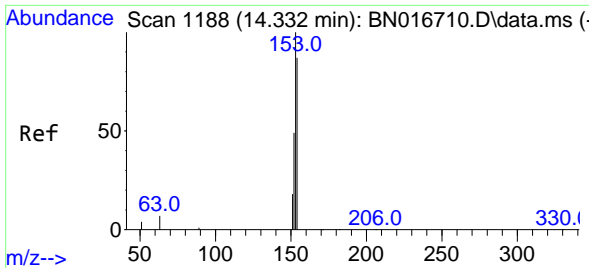


#16
 Acenaphthylene
 Concen: 0.08 ng
 RT: 13.990 min Scan# 1161
 Delta R.T. 0.001 min
 Lab File: BN016765.D
 Acq: 06 Oct 2021 05:41



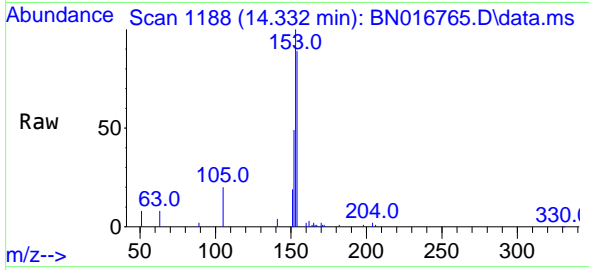
Tgt Ion:152 Resp: 23127
 Ion Ratio Lower Upper
 152 100
 151 20.9 15.5 23.3
 153 14.3 10.4 15.6





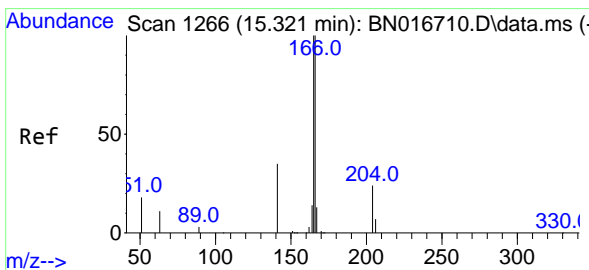
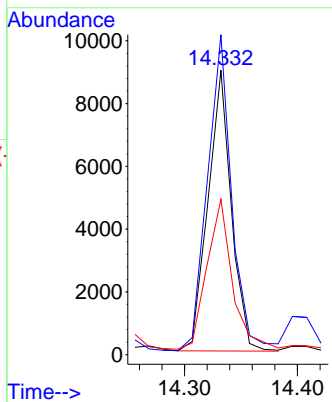
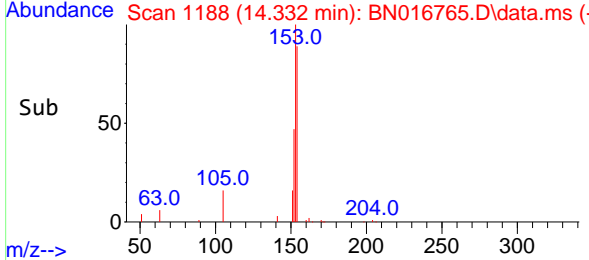
#17
 Acenaphthene
 Concen: 0.07 ng
 RT: 14.332 min Scan# 1188
 Delta R.T. 0.000 min
 Lab File: BN016765.D
 Acq: 06 Oct 2021 05:41

Instrument :
 BNA_N
ClientSampled :
 S-831-J-SO-2-2.5-092721

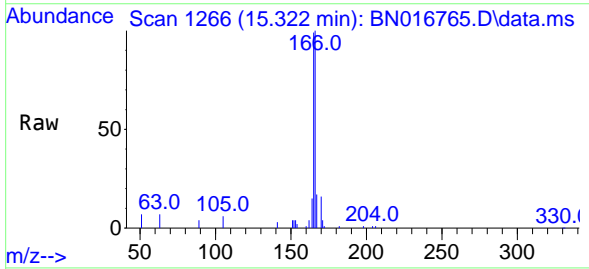


Tgt Ion:154 Resp: 12849
 Ion Ratio Lower Upper
 154 100
 153 117.2 90.1 135.1
 152 59.6 43.6 65.4

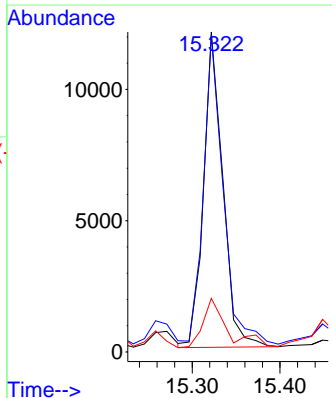
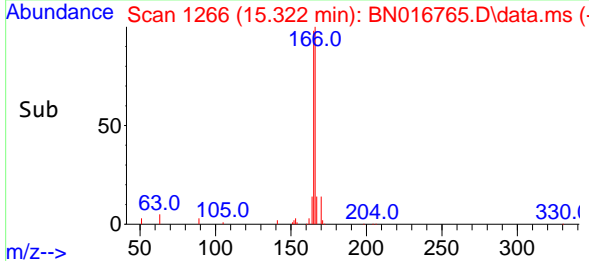
Manual Integrations
APPROVED
 mohammad
 10/7/2021 8:31:52 AM

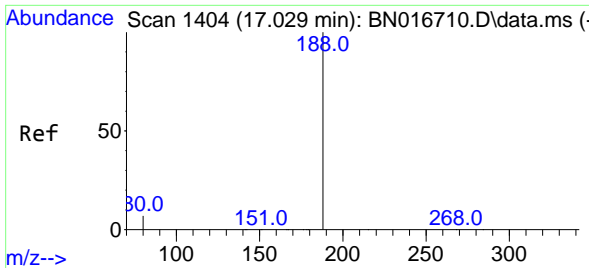


#18
 Fluorene
 Concen: 0.08 ng
 RT: 15.322 min Scan# 1266
 Delta R.T. 0.001 min
 Lab File: BN016765.D
 Acq: 06 Oct 2021 05:41



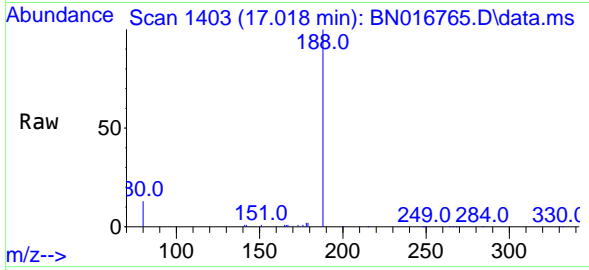
Tgt Ion:166 Resp: 18264
 Ion Ratio Lower Upper
 166 100
 165 101.1 78.1 117.1
 167 20.0 10.7 16.1#





#19
 Phenanthrene-d10
 Concen: 0.40 ng
 RT: 17.018 min Scan# 1403
 Delta R.T. -0.012 min
 Lab File: BN016765.D
 Acq: 06 Oct 2021 05:41

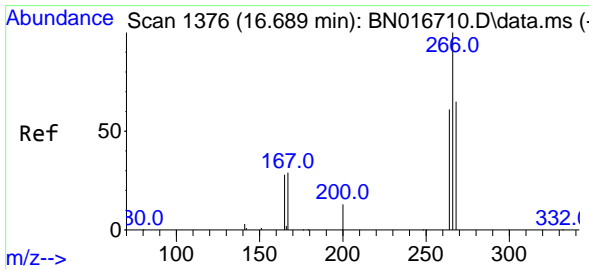
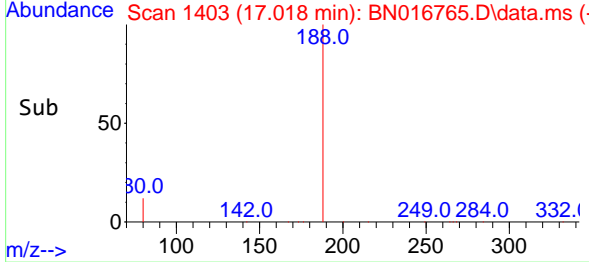
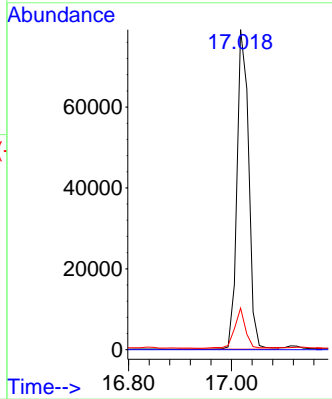
Instrument :
 BNA_N
ClientSampleId :
 S-831-J-SO-2-2.5-092721



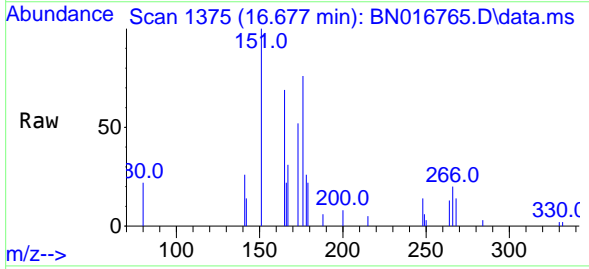
Tgt Ion:188 Resp: 125086

Ion	Ratio	Lower	Upper
188	100		
94	0.0	0.0	0.0
80	13.0	5.8	8.8#

Manual Integrations
APPROVED
 mohammad
 10/7/2021 8:31:52 AM

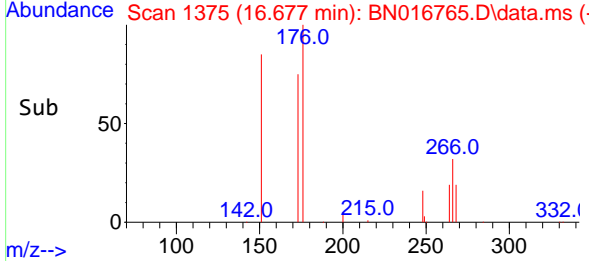
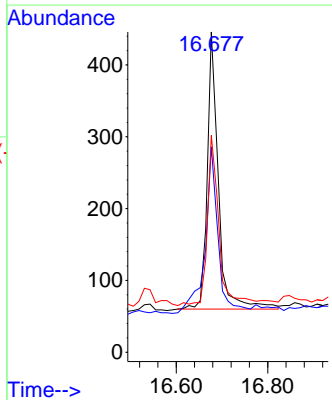


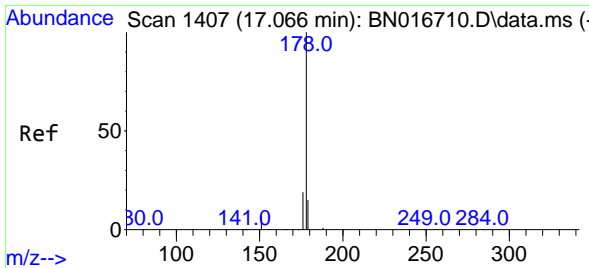
#24
 Pentachlorophenol
 Concen: 0.35 ng
 RT: 16.677 min Scan# 1375
 Delta R.T. -0.012 min
 Lab File: BN016765.D
 Acq: 06 Oct 2021 05:41



Tgt Ion:266 Resp: 651

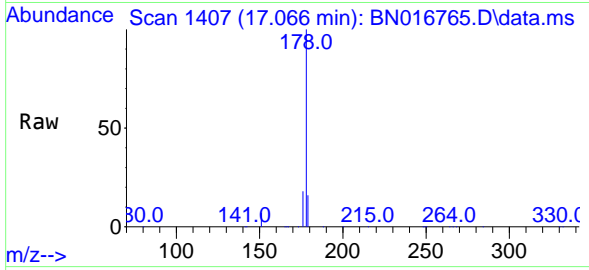
Ion	Ratio	Lower	Upper
266	100		
264	69.1	49.3	73.9
268	65.7	51.8	77.8





#25
 Phenanthrene
 Concen: 0.90 ng m
 RT: 17.066 min Scan# 1407
 Delta R.T. 0.000 min
 Lab File: BN016765.D
 Acq: 06 Oct 2021 05:41

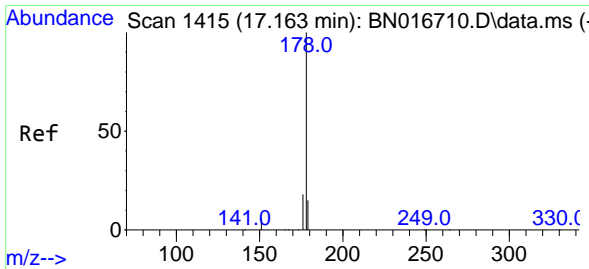
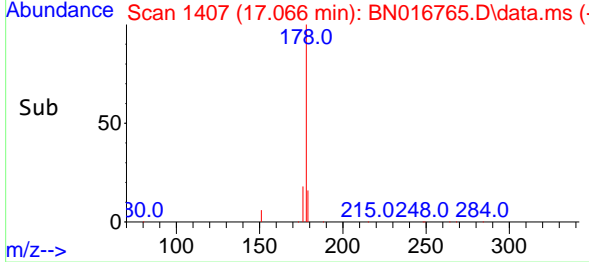
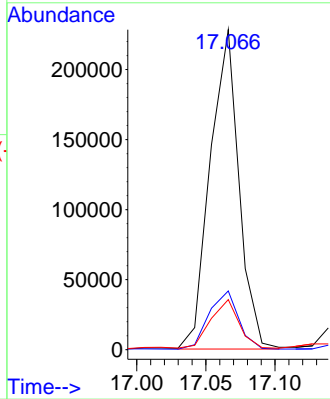
Instrument :
 BNA_N
ClientSampled :
 S-831-J-SO-2-2.5-092721



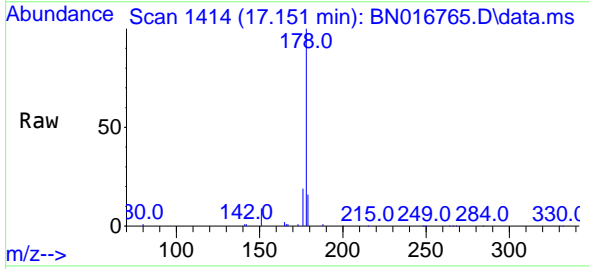
Tgt Ion:178 Resp: 330246

Ion	Ratio	Lower	Upper
178	100		
176	18.6	15.0	22.6
179	16.6	12.4	18.6

Manual Integrations
APPROVED
 mohammad
 10/7/2021 8:31:52 AM

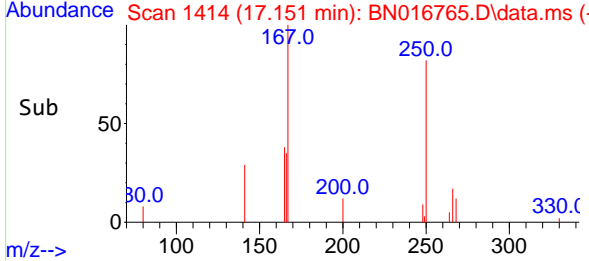
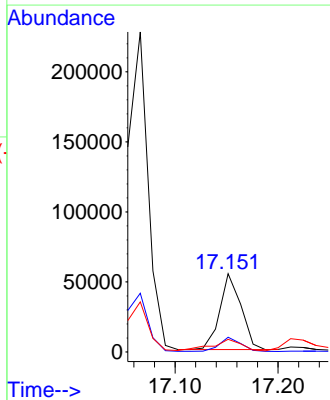


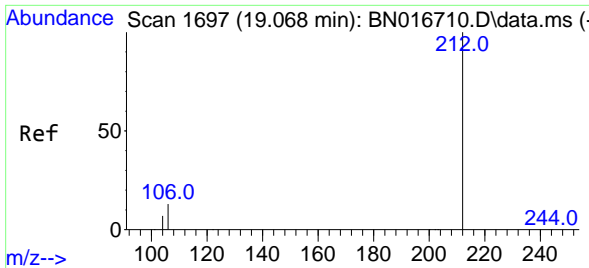
#26
 Anthracene
 Concen: 0.24 ng
 RT: 17.151 min Scan# 1414
 Delta R.T. -0.012 min
 Lab File: BN016765.D
 Acq: 06 Oct 2021 05:41



Tgt Ion:178 Resp: 77596

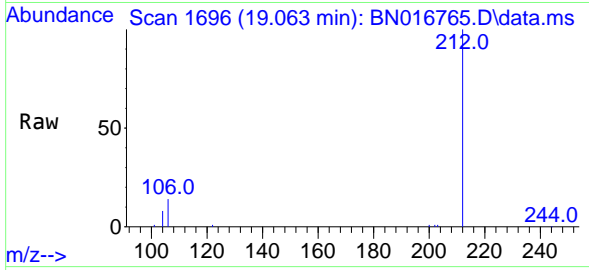
Ion	Ratio	Lower	Upper
178	100		
176	18.4	14.5	21.7
179	20.5	12.2	18.4#





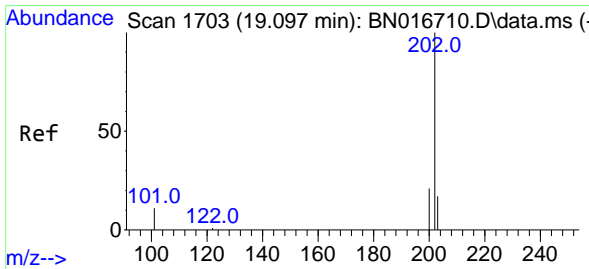
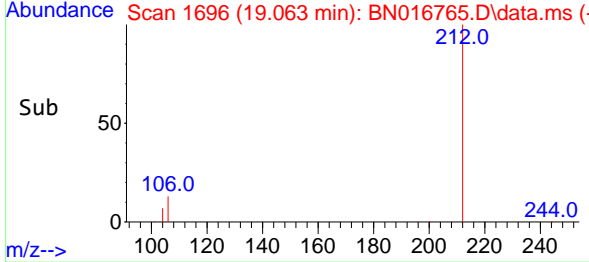
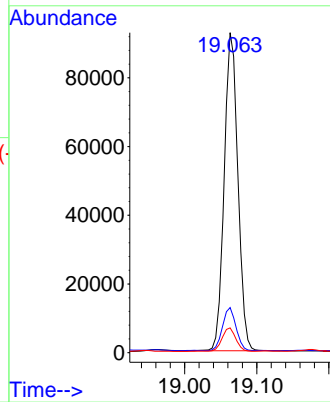
#27
 Fluoranthene-d10
 Concen: 0.36 ng
 RT: 19.063 min Scan# 1696
 Delta R.T. -0.005 min
 Lab File: BN016765.D
 Acq: 06 Oct 2021 05:41

Instrument :
 BNA_N
ClientSampled :
 S-831-J-SO-2-2.5-092721

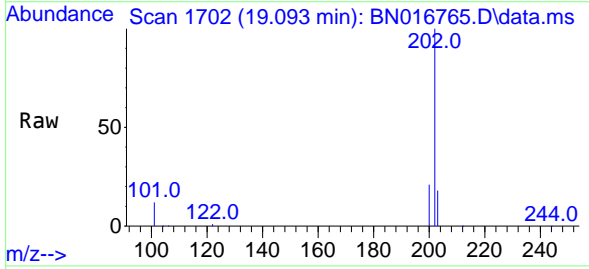


Tgt Ion:212 Resp: 122080
 Ion Ratio Lower Upper
 212 100
 106 13.3 10.6 16.0
 104 7.5 5.8 8.8

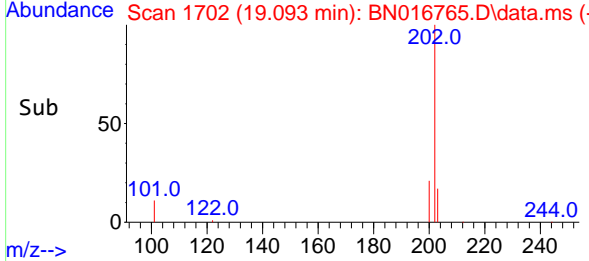
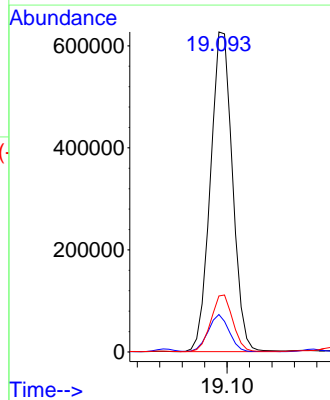
Manual Integrations
APPROVED
 mohammad
 10/7/2021 8:31:52 AM

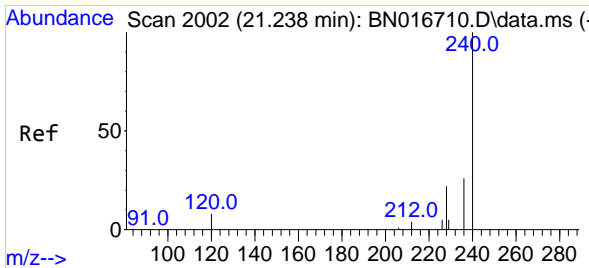


#28
 Fluoranthene
 Concen: 2.09 ng
 RT: 19.093 min Scan# 1702
 Delta R.T. -0.005 min
 Lab File: BN016765.D
 Acq: 06 Oct 2021 05:41



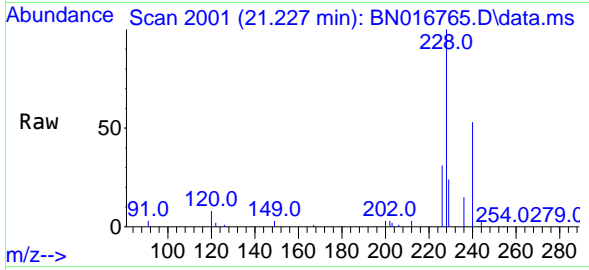
Tgt Ion:202 Resp: 853716
 Ion Ratio Lower Upper
 202 100
 101 11.0 8.9 13.3
 203 17.5 13.8 20.8





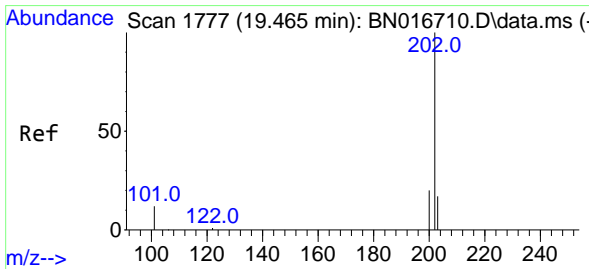
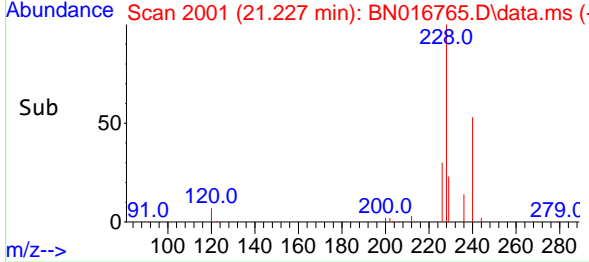
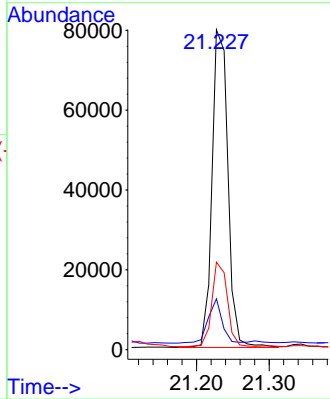
#29
 Chrysene-d12
 Concen: 0.40 ng
 RT: 21.227 min Scan# 2001
 Delta R.T. -0.010 min
 Lab File: BN016765.D
 Acq: 06 Oct 2021 05:41

Instrument :
 BNA_N
ClientSampleId :
 S-831-J-SO-2-2.5-092721

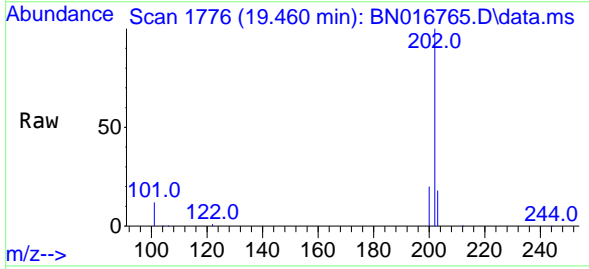


Tgt Ion:240 Resp: 120902
 Ion Ratio Lower Upper
 240 100
 120 15.9 6.6 10.0#
 236 27.4 20.7 31.1

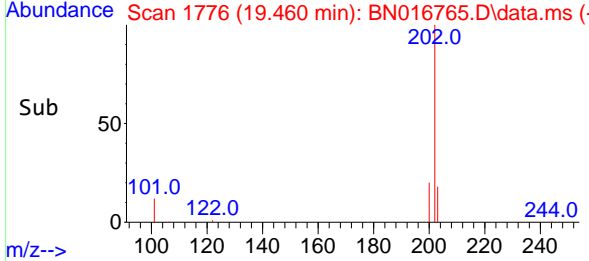
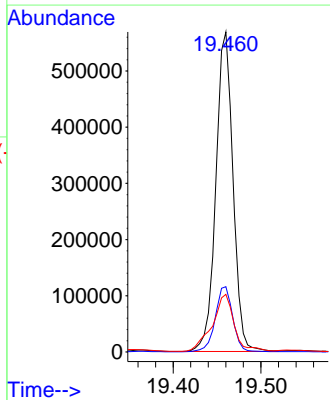
Manual Integrations
APPROVED
 mohammad
 10/7/2021 8:31:52 AM

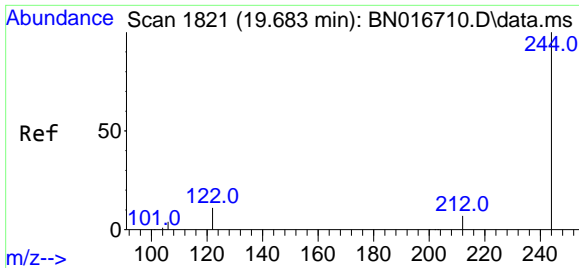


#30
 Pyrene
 Concen: 1.94 ng
 RT: 19.460 min Scan# 1776
 Delta R.T. -0.005 min
 Lab File: BN016765.D
 Acq: 06 Oct 2021 05:41



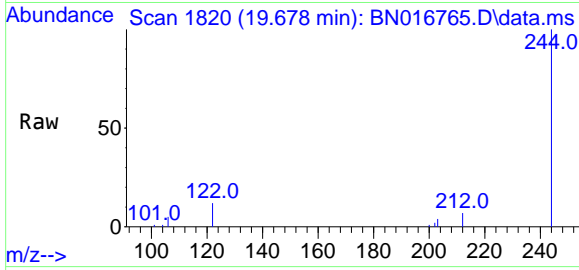
Tgt Ion:202 Resp: 772973
 Ion Ratio Lower Upper
 202 100
 200 20.7 16.5 24.7
 203 22.6 13.9 20.9#





#31
 Terphenyl-d14
 Concen: 0.34 ng
 RT: 19.678 min Scan# 1820
 Delta R.T. -0.005 min
 Lab File: BN016765.D
 Acq: 06 Oct 2021 05:41

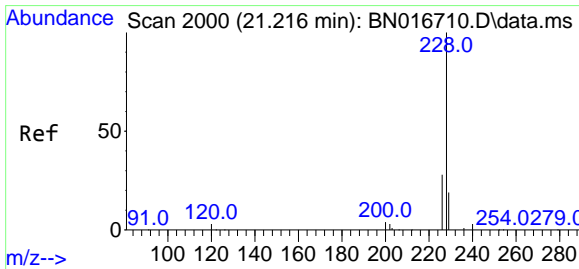
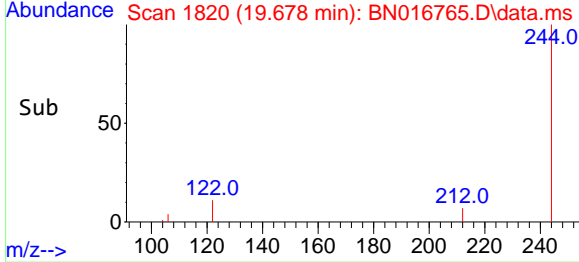
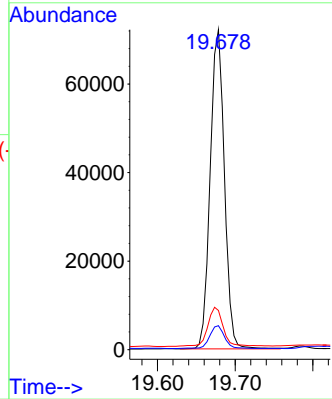
Instrument :
 BNA_N
ClientSampled :
 S-831-J-SO-2-2.5-092721



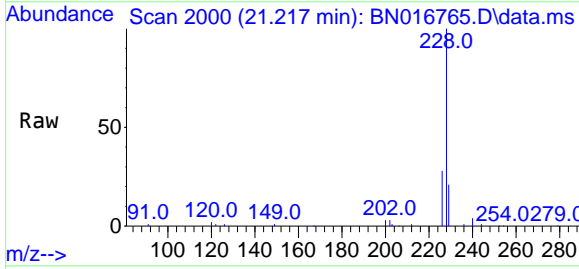
Tgt Ion:244 Resp: 91929

Ion	Ratio	Lower	Upper
244	100		
212	7.5	5.8	8.6
122	12.3	8.9	13.3

Manual Integrations
APPROVED
 mohammad
 10/7/2021 8:31:52 AM

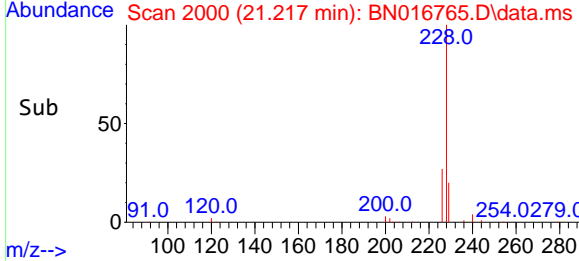
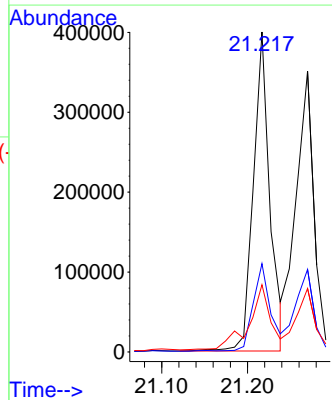


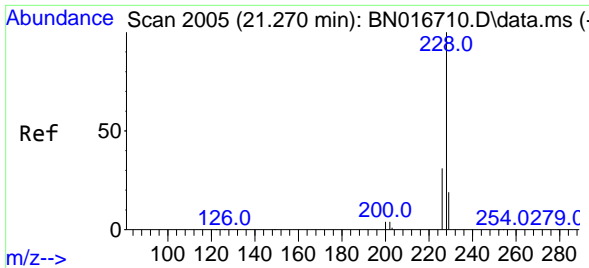
#32
 Benzo(a)anthracene
 Concen: 1.43 ng
 RT: 21.217 min Scan# 2000
 Delta R.T. 0.000 min
 Lab File: BN016765.D
 Acq: 06 Oct 2021 05:41



Tgt Ion:228 Resp: 534494

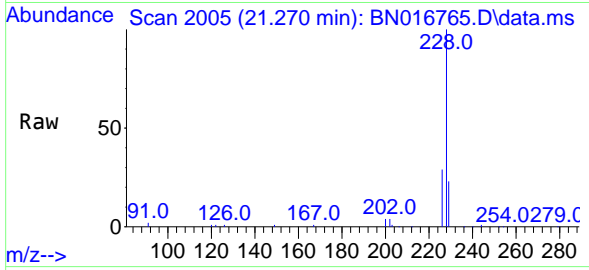
Ion	Ratio	Lower	Upper
228	100		
226	27.6	22.3	33.5
229	21.0	15.4	23.0





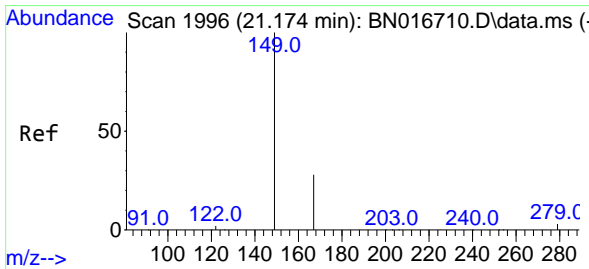
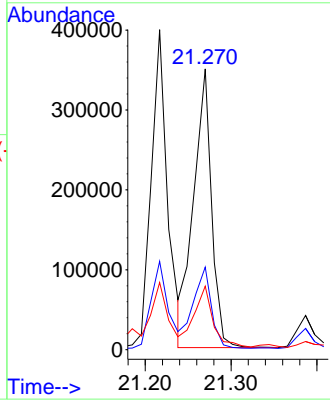
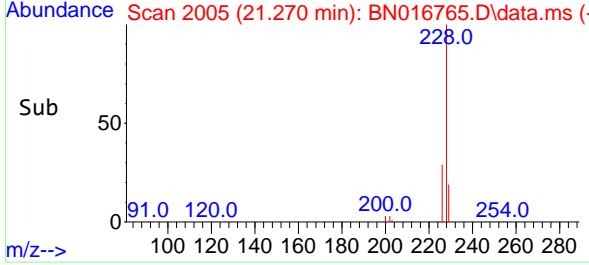
#33
 Chrysene
 Concen: 1.34 ng
 RT: 21.270 min Scan# 2005
 Delta R.T. 0.000 min
 Lab File: BN016765.D
 Acq: 06 Oct 2021 05:41

Instrument :
 BNA_N
ClientSampled :
 S-831-J-SO-2-2.5-092721

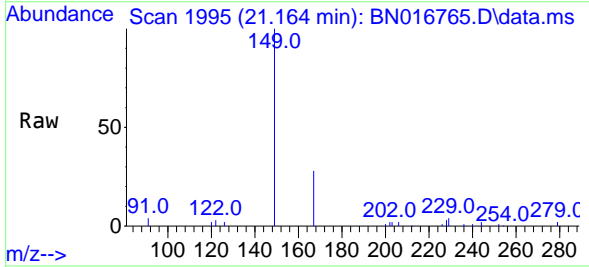


Tgt Ion: 228 Resp: 508520
 Ion Ratio Lower Upper
 228 100
 226 29.4 24.2 36.4
 229 22.6 15.4 23.0

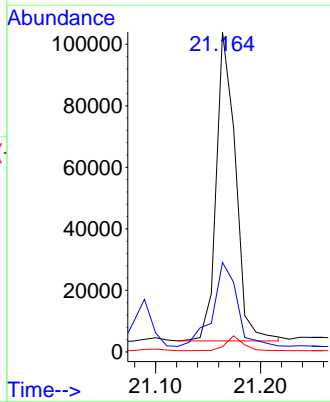
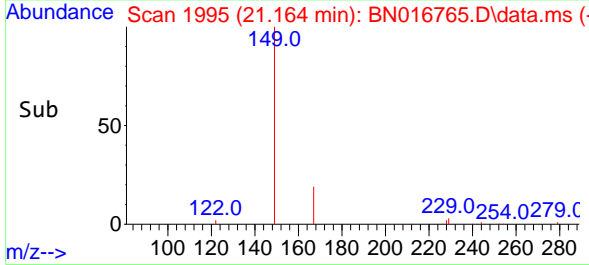
Manual Integrations
APPROVED
 mohammad
 10/7/2021 8:31:52 AM

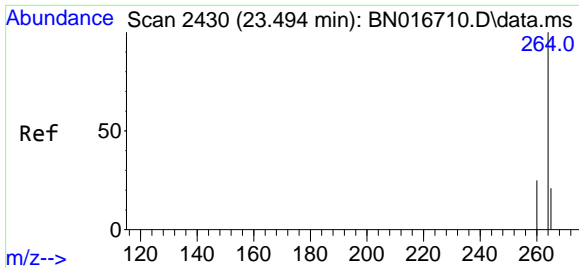


#34
 Bis(2-ethylhexyl)phthalate
 Concen: 0.56 ng
 RT: 21.164 min Scan# 1995
 Delta R.T. -0.010 min
 Lab File: BN016765.D
 Acq: 06 Oct 2021 05:41



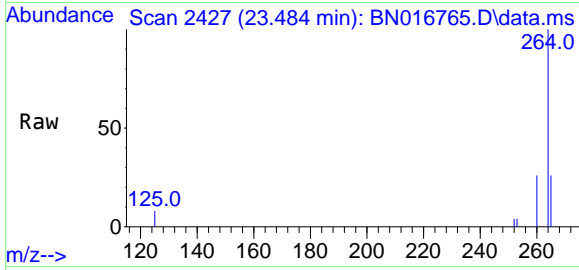
Tgt Ion: 149 Resp: 127944
 Ion Ratio Lower Upper
 149 100
 167 34.4 22.2 33.4#
 279 4.3 3.4 5.2





#35
 Perylene-d12
 Concen: 0.40 ng
 RT: 23.484 min Scan# 2427
 Delta R.T. -0.010 min
 Lab File: BN016765.D
 Acq: 06 Oct 2021 05:41

Instrument :
 BNA_N
 ClientSampled :
 S-831-J-SO-2-2.5-092721

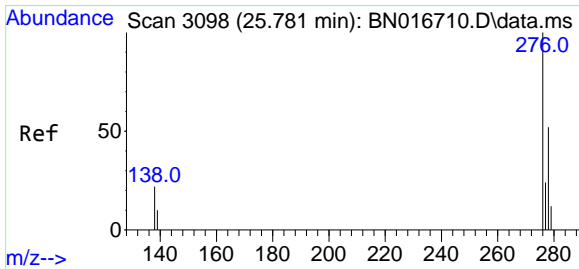
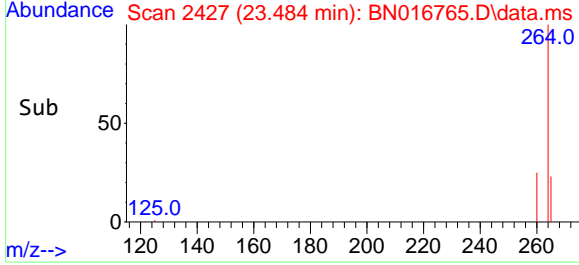
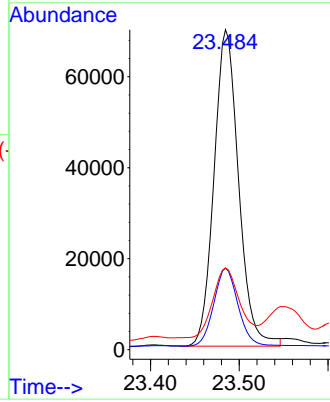


Tgt Ion:264 Resp: 133812

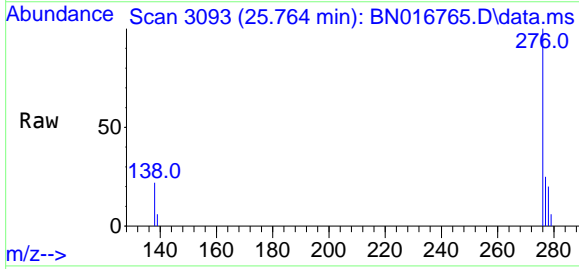
Ion	Ratio	Lower	Upper
264	100		
260	25.5	19.8	29.6
265	25.6	20.3	30.5

Manual Integrations
 APPROVED

mohammad
 10/7/2021 8:31:52 AM

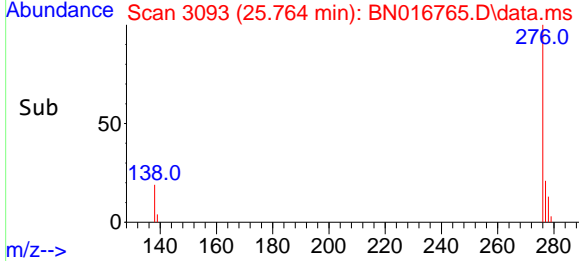
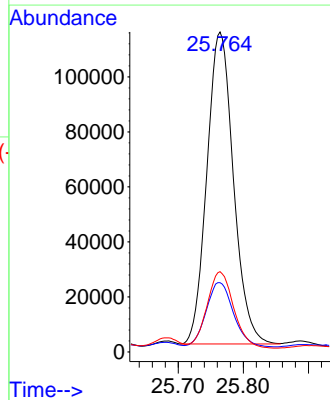


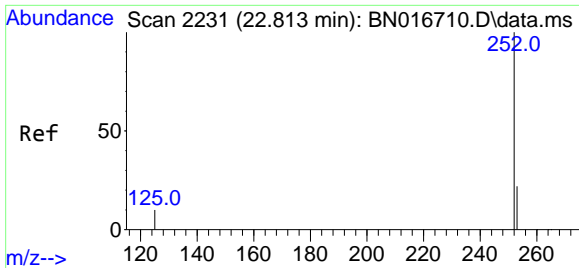
#36
 Indeno(1,2,3-cd)pyrene
 Concen: 0.76 ng
 RT: 25.764 min Scan# 3093
 Delta R.T. -0.017 min
 Lab File: BN016765.D
 Acq: 06 Oct 2021 05:41



Tgt Ion:276 Resp: 321398

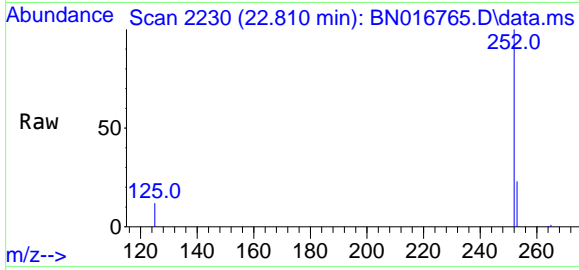
Ion	Ratio	Lower	Upper
276	100		
138	21.2	19.2	28.8
277	24.7	20.0	30.0





#37
 Benzo(b)fluoranthene
 Concen: 1.79 ng
 RT: 22.810 min Scan# 2230
 Delta R.T. -0.003 min
 Lab File: BN016765.D
 Acq: 06 Oct 2021 05:41

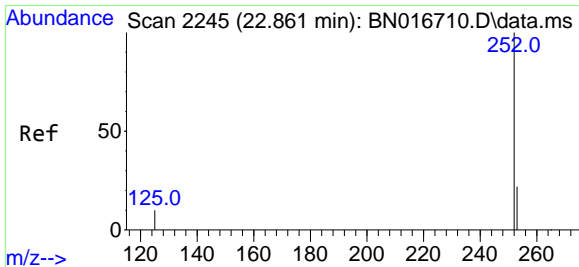
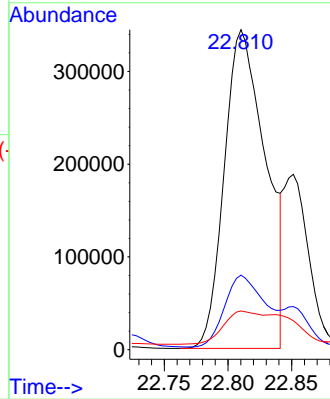
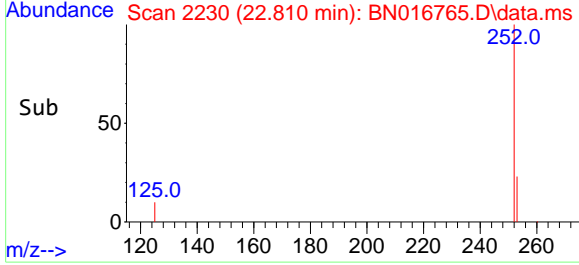
Instrument :
 BNA_N
 ClientSampled :
 S-831-J-SO-2-2.5-092721



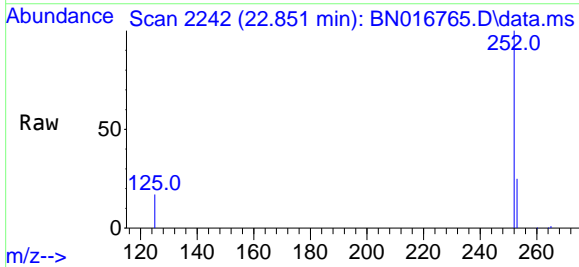
Tgt Ion:252 Resp: 775970
 Ion Ratio Lower Upper
 252 100
 253 23.3 17.8 26.8
 125 12.1 8.3 12.5

Manual Integrations
 APPROVED

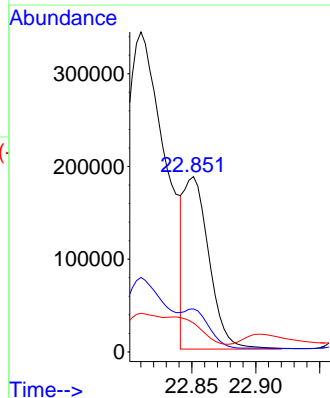
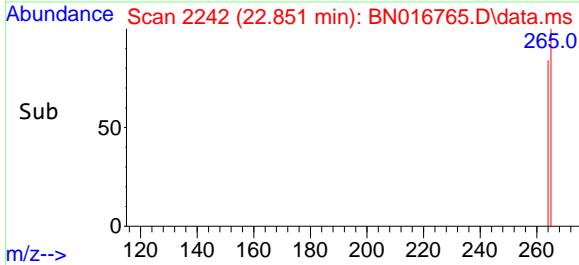
mohammad
 10/7/2021 8:31:52 AM

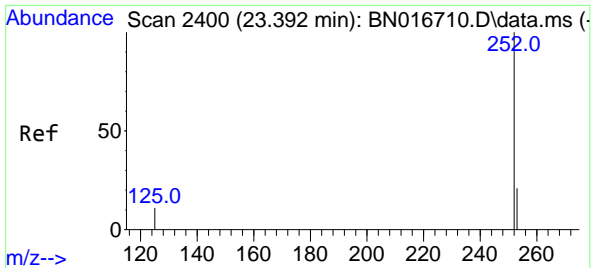


#38
 Benzo(k)fluoranthene
 Concen: 0.61 ng m
 RT: 22.851 min Scan# 2242
 Delta R.T. -0.010 min
 Lab File: BN016765.D
 Acq: 06 Oct 2021 05:41



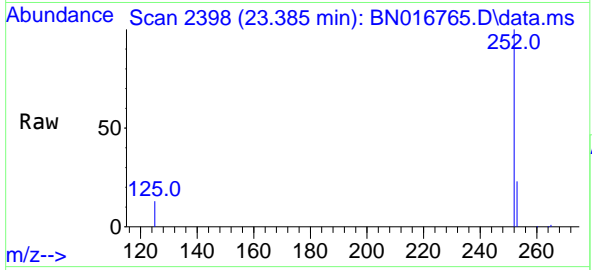
Tgt Ion:252 Resp: 253116
 Ion Ratio Lower Upper
 252 100
 253 24.5 17.8 26.8
 125 16.5 8.5 12.7#





#39
 Benzo(a)pyrene
 Concen: 1.30 ng
 RT: 23.385 min Scan# 2398
 Delta R.T. -0.007 min
 Lab File: BN016765.D
 Acq: 06 Oct 2021 05:41

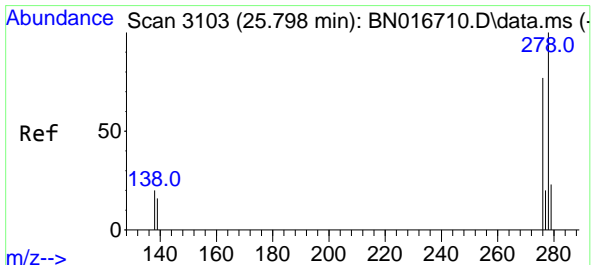
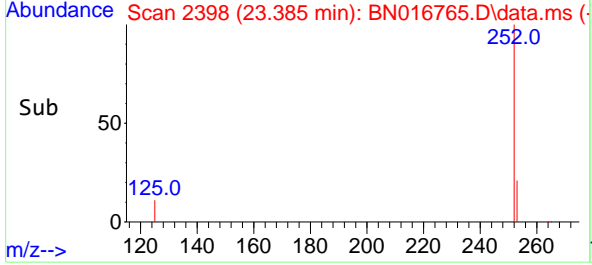
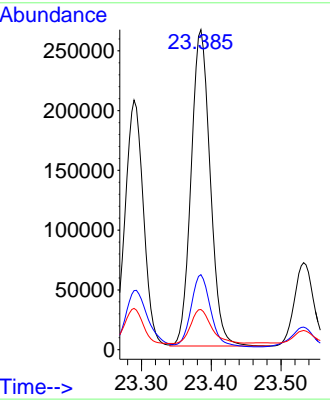
Instrument :
 BNA_N
ClientSampled :
 S-831-J-SO-2-2.5-092721



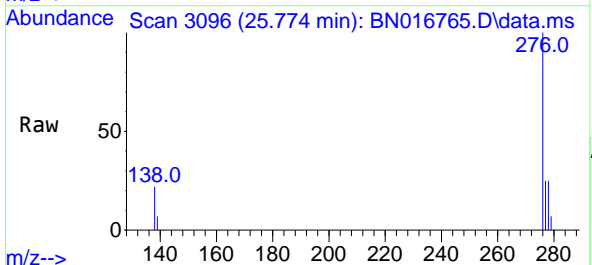
Tgt Ion:252 Resp: 502208

Ion	Ratio	Lower	Upper
252	100		
253	23.4	17.9	26.9
125	12.6	9.4	14.2

Manual Integrations
APPROVED
 mohammad
 10/7/2021 8:31:52 AM

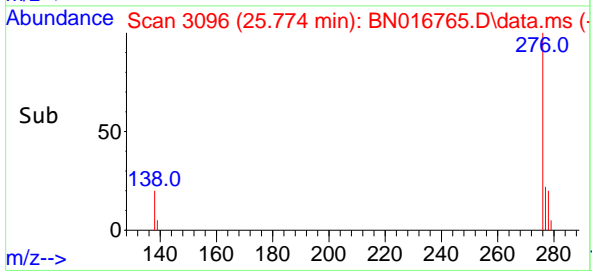
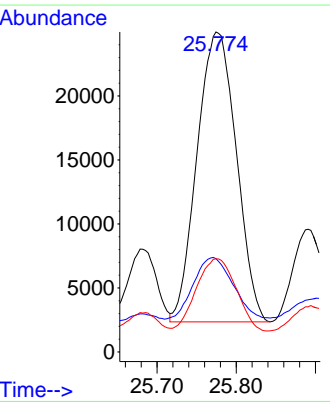


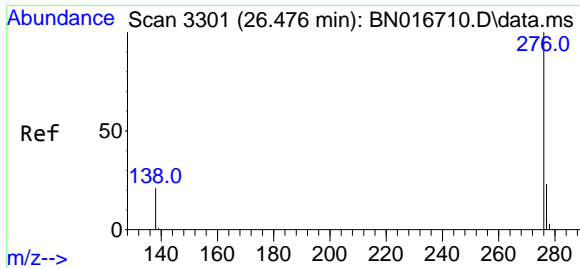
#40
 Dibenzo(a,h)anthracene
 Concen: 0.23 ng
 RT: 25.774 min Scan# 3096
 Delta R.T. -0.024 min
 Lab File: BN016765.D
 Acq: 06 Oct 2021 05:41



Tgt Ion:278 Resp: 78074

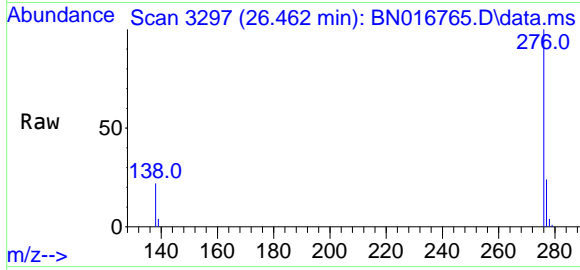
Ion	Ratio	Lower	Upper
278	100		
139	29.2	13.1	19.7#
279	29.1	19.3	28.9#





#41
 Benzo(g,h,i)perylene
 Concen: 0.82 ng
 RT: 26.462 min Scan# 3297
 Delta R.T. -0.013 min
 Lab File: BN016765.D
 Acq: 06 Oct 2021 05:41

Instrument :
 BNA_N
ClientSampled :
 S-831-J-SO-2-2.5-092721



Tgt Ion: 276 Resp: 310945

Ion	Ratio	Lower	Upper
276	100		
277	24.4	19.0	28.4
138	22.3	17.0	25.6

Manual Integrations
APPROVED
 mohammad
 10/7/2021 8:31:52 AM

