

Data Path : Z:\svoasrv\HPCHEM1\BNA_N\Data\BN100621\
 Data File : BN016806.D
 Acq On : 07 Oct 2021 08:31
 Operator : CG/JU
 Sample : M4020-09
 Misc :
 ALS Vial : 30 Sample Multiplier: 1

Instrument :
 BNA_N
ClientSampleId :
 S-819-N-SO-2-2.5-093021

Quant Time: Oct 07 09:39:54 2021
 Quant Method : Z:\SVOASRV\HPCHEM1\BNA_N\METHODS\8270-SIM-BN100421.M
 Quant Title : ASP BNA STANDARDS FOR 5 POINT CALIBRATION
 QLast Update : Wed Oct 06 14:22:07 2021
 Response via : Initial Calibration

Compound	R.T.	QI on	Response	Conc	Units	Dev(Min)

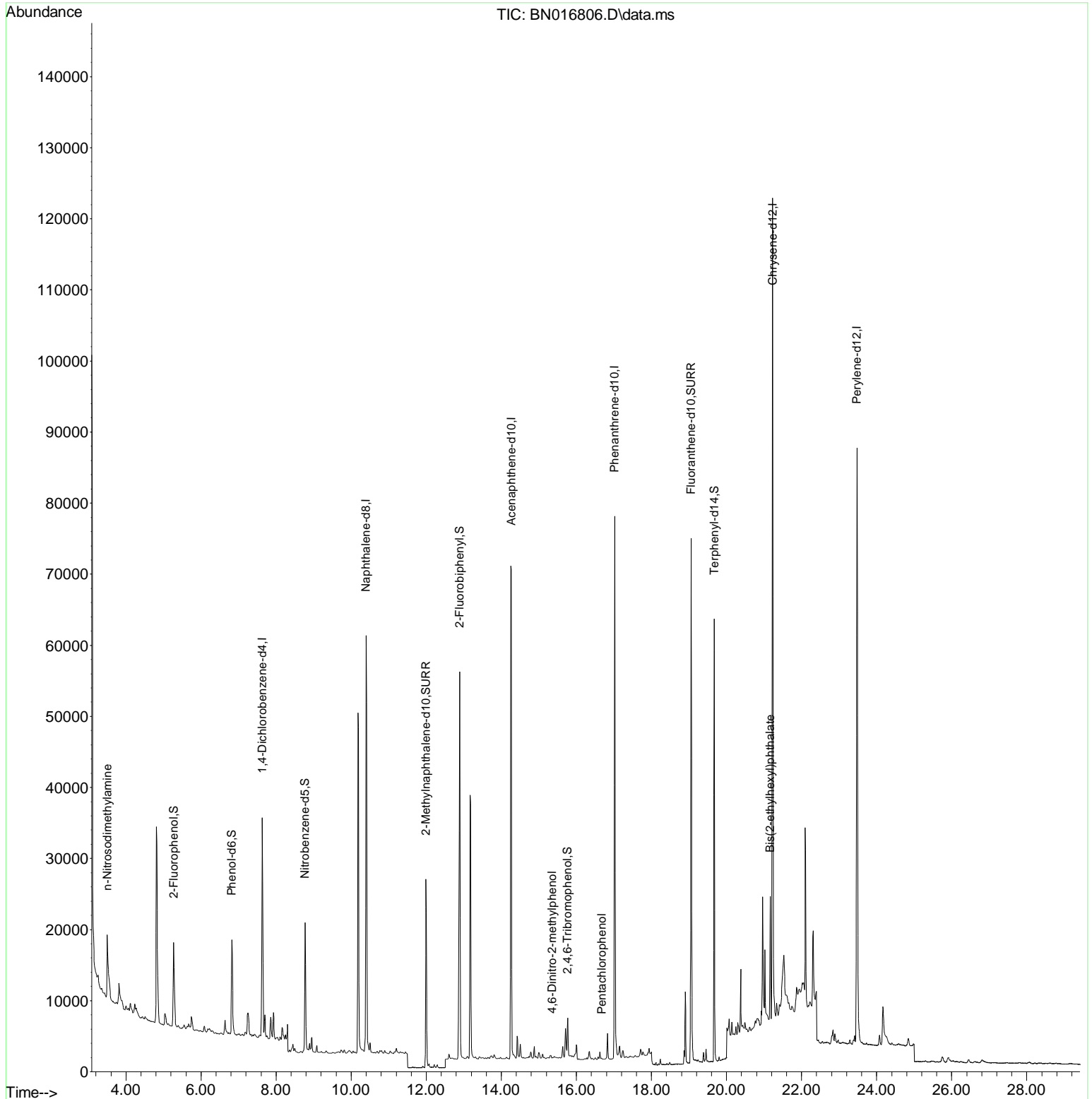
Internal Standards						
1) 1,4-Dichlorobenzene-d4	7.633	152	17993	0.400	ng	0.00
7) Naphthalene-d8	10.394	136	84524	0.400	ng	-0.01
13) Acenaphthene-d10	14.269	164	48000	0.400	ng	0.00
19) Phenanthrene-d10	17.018	188	97016	0.400	ng	0.00
29) Chrysene-d12	21.228	240	105635	0.400	ng	# 0.00
35) Perylene-d12	23.478	264	110262	0.400	ng	0.00
System Monitoring Compounds						
4) 2-Fluorophenol	5.273	112	14262	0.311	ng	0.03
5) Phenol-d6	6.822	99	14602	0.287	ng	0.00
8) Nitrobenzene-d5	8.772	82	16172	0.273	ng	0.00
11) 2-Methylnaphthalene-d10	11.994	152	37349	0.297	ng	0.00
14) 2,4,6-Tribromophenol	15.766	330	5194	0.305	ng	0.00
15) 2-Fluorobiphenyl	12.886	172	47221	0.246	ng	0.00
27) Fluoranthene-d10	19.058	212	82864	0.312	ng	0.00
31) Terphenyl-d14	19.674	244	62088	0.263	ng	0.00
Target Compounds						
3) n-Nitrosodimethylamine	3.502	42	2627	0.194	ng	# 1
20) 4,6-Dinitro-2-methylph...	15.360	198	7	0.267	ng	# 1
24) Pentachlorophenol	16.677	266	36	0.340	ng	# 74
34) Bis(2-ethylhexyl)phtha...	21.164	149	14766	0.074	ng	100

(#) = qualifier out of range (m) = manual integration (+) = signals summed

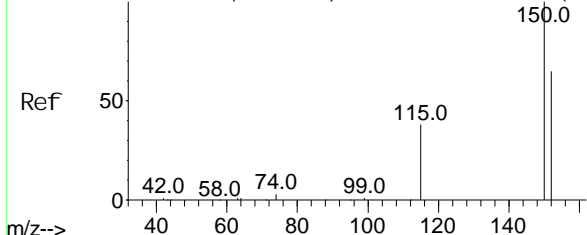
Data Path : Z:\svoasrv\HPCHEM1\BNA_N\Data\BN100621\
 Data File : BN016806.D
 Acq On : 07 Oct 2021 08:31
 Operator : CG/JU
 Sample : M4020-09
 Misc :
 ALS Vial : 30 Sample Multiplier: 1

Instrument :
 BNA_N
Client Sampled :
 S-819-N-SO-2-2.5-093021

Quant Time: Oct 07 09:39:54 2021
 Quant Method : Z:\SVOASRV\HPCHEM1\BNA_N\METHODS\8270-SIM-BN100421.M
 Quant Title : ASP BNA STANDARDS FOR 5 POINT CALIBRATION
 QLast Update : Wed Oct 06 14:22:07 2021
 Response via : Initial Calibration

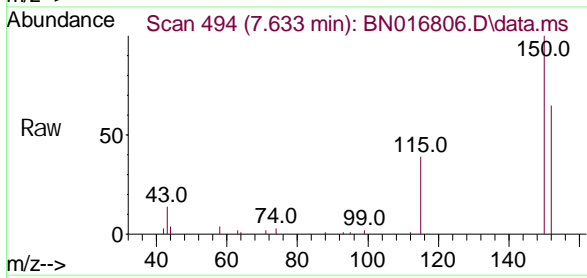


Abundance Scan 495 (7.642 min): BN016710.D\data.ms (-487#(4)

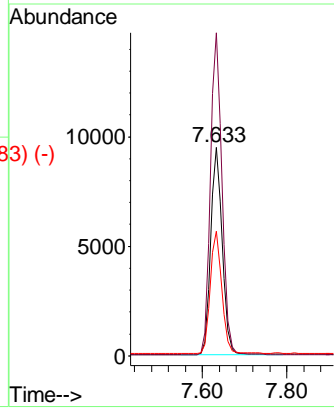
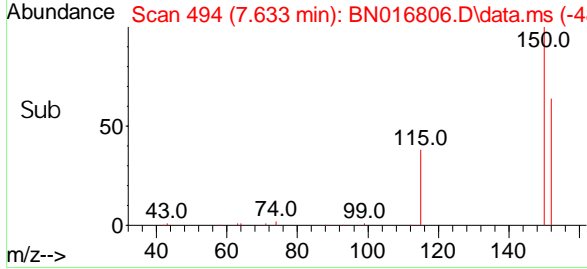


1, 4-Di chl oro benzene-d4
Concen: 0.400 ng
RT: 7.633 mi n Scan# 494
Del ta R. T. 0.000 mi n
Lab Fi le: BN016806. D
Acq: 07 Oct 2021 08: 31

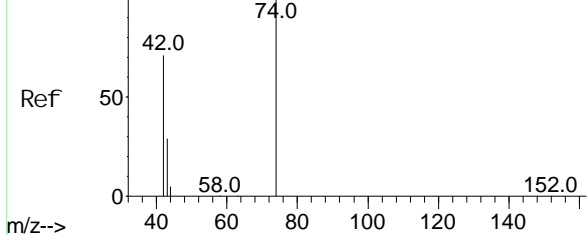
Instrument :
BNA_N
ClientSampled :
S-819-N-SO-2-2.5-093021



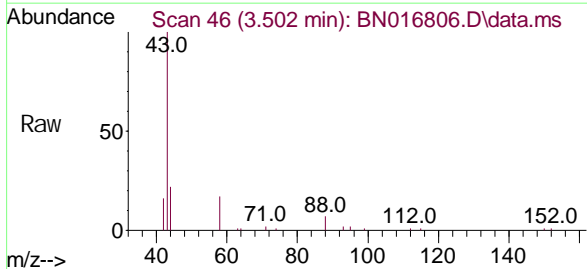
Tgt Ion: 152 Resp: 17993
Ion Ratio Lower Upper
152 100
150 154.7 123.3 184.9
115 59.7 47.0 70.6



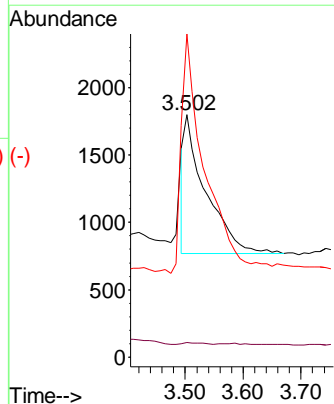
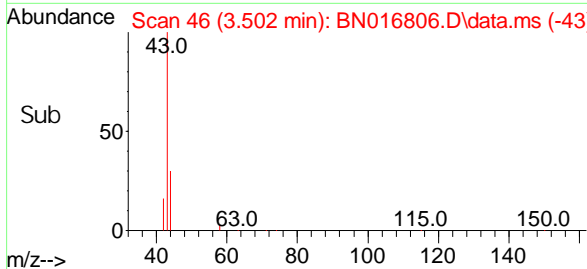
Abundance Scan 54 (3.576 min): BN016710.D\data.ms (-50) (-#3



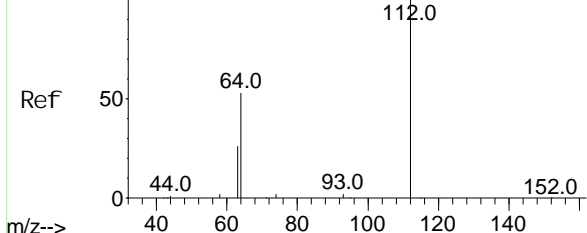
n-Ni trosodi methyl ami ne
Concen: 0.194 ng
RT: 3.502 mi n Scan# 46
Del ta R. T. -0.074 mi n
Lab Fi le: BN016806. D
Acq: 07 Oct 2021 08: 31



Tgt Ion: 42 Resp: 2627
Ion Ratio Lower Upper
42 100
74 0.7 124.0 186.0#
44 149.7 5.6 8.4#



Abundance Scan 236 (5.254 min): BN016710.D\data.ms (-229)#4

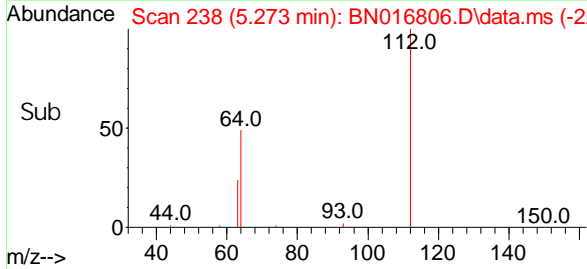
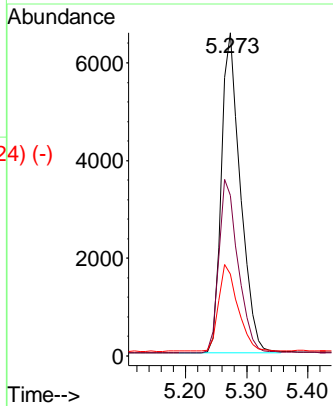
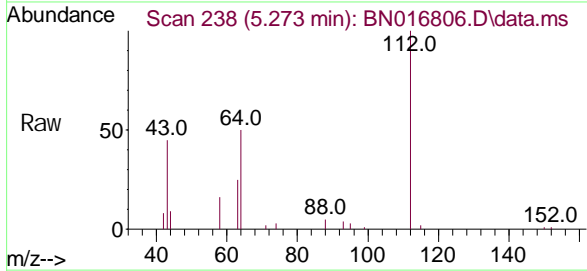


2-Fluorophenol
Concen: 0.311 ng
RT: 5.273 min Scan# 238
Delta R.T. 0.028 min
Lab File: BN016806.D
Acq: 07 Oct 2021 08:31

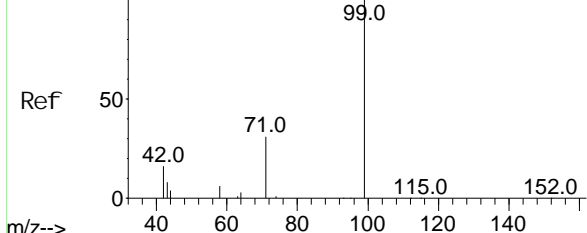
Instrument :
BNA_N
ClientSampled :
S-819-N-SO-2-2.5-093021

Tgt Ion: 112 Resp: 14262

Ion	Ratio	Lower	Upper
112	100		
64	54.3	42.9	64.3
63	27.1	21.5	32.3



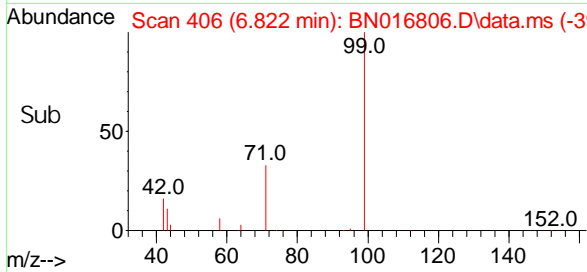
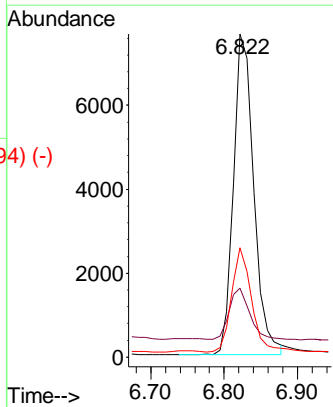
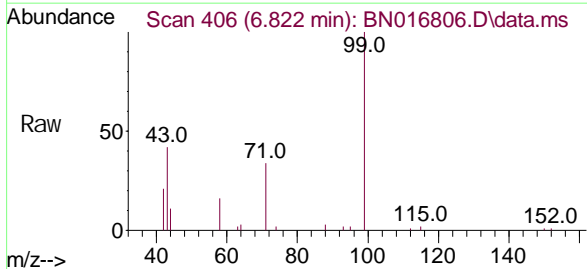
Abundance Scan 406 (6.821 min): BN016710.D\data.ms (-399)#5

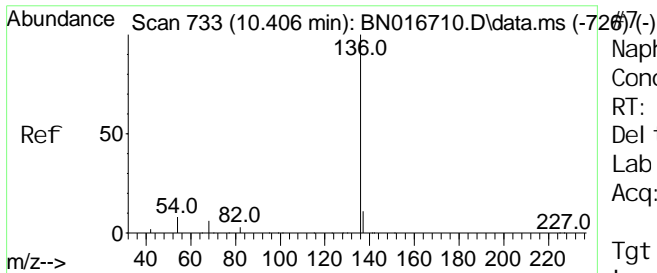


Phenol-d6
Concen: 0.287 ng
RT: 6.822 min Scan# 406
Delta R.T. 0.009 min
Lab File: BN016806.D
Acq: 07 Oct 2021 08:31

Tgt Ion: 99 Resp: 14602

Ion	Ratio	Lower	Upper
99	100		
42	16.3	13.4	20.2
71	31.6	24.0	36.0



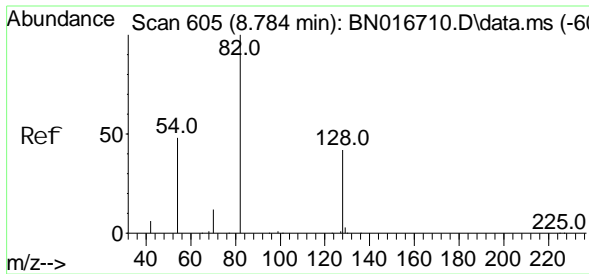
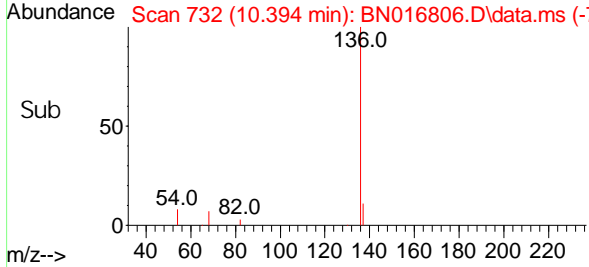
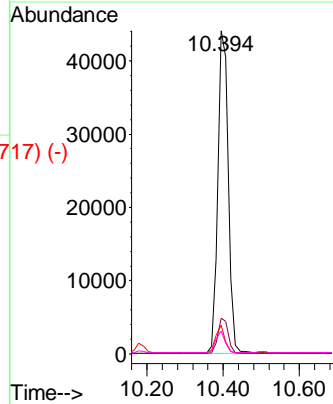
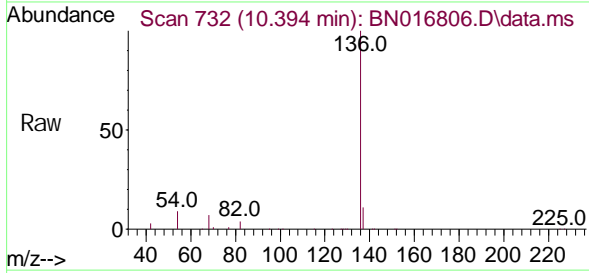


Naphthalene-d8
 Concen: 0.400 ng
 RT: 10.394 min Scan# 732
 Delta R.T. -0.012 min
 Lab File: BN016806.D
 Acq: 07 Oct 2021 08:31

Instrument :
 BNA_N
ClientSampled :
 S-819-N-SO-2-2.5-093021

Tgt Ion: 136 Resp: 84524

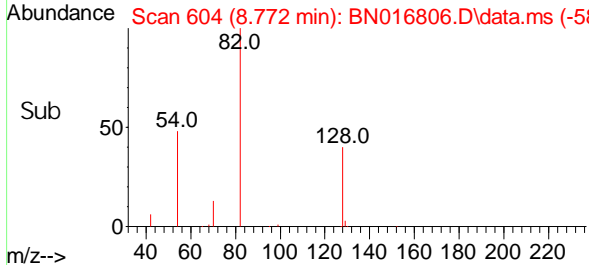
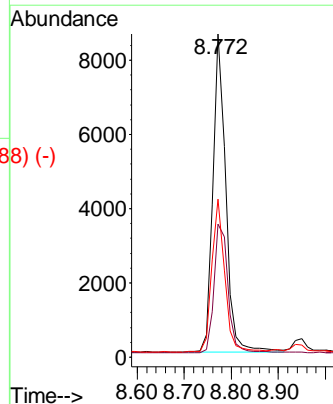
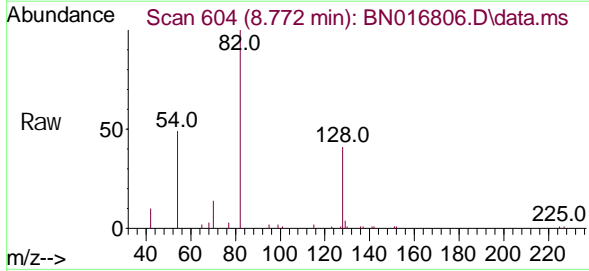
Ion	Ratio	Lower	Upper
136	100		
137	11.0	8.9	13.3
54	8.8	6.5	9.7
68	7.2	5.3	7.9



Nitrobenzene-d5
 Concen: 0.273 ng
 RT: 8.772 min Scan# 604
 Delta R.T. 0.000 min
 Lab File: BN016806.D
 Acq: 07 Oct 2021 08:31

Tgt Ion: 82 Resp: 16172

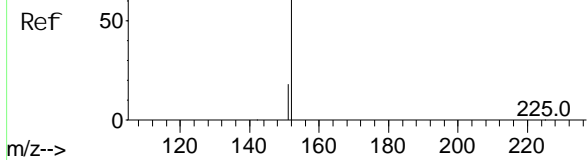
Ion	Ratio	Lower	Upper
82	100		
128	41.2	33.8	50.6
54	48.9	38.5	57.7



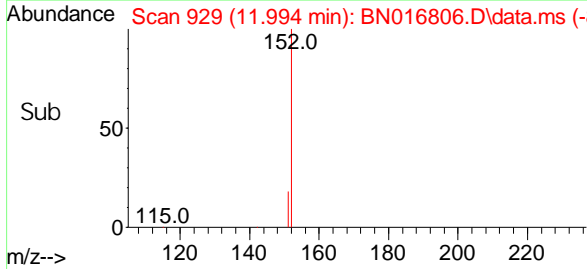
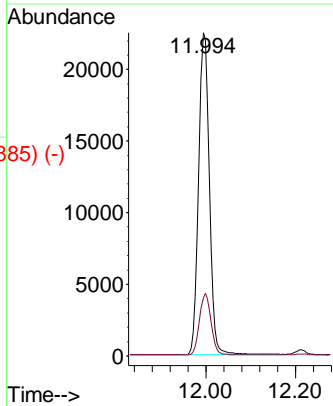
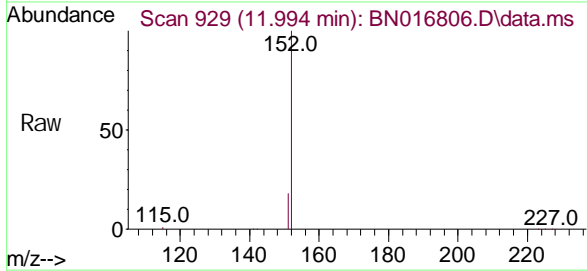
Abundance Scan 932 (12.007 min): BN016710.D\data.ms (-92#)1(4)

2-Methyl naphthal ene-d10
Concen: 0.297 ng
RT: 11.994 min Scan# 929
Delta R. T. -0.004 min
Lab File: BN016806.D
Acq: 07 Oct 2021 08:31

Instrument :
BNA_N
ClientSampled :
S-819-N-SO-2-2.5-093021

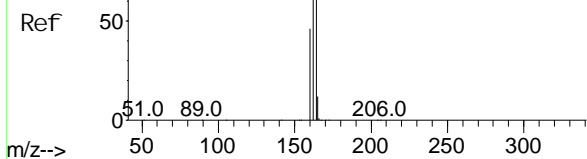


Tgt Ion: 152 Resp: 37349
Ion Ratio Lower Upper
152 100
151 20.7 16.2 24.4

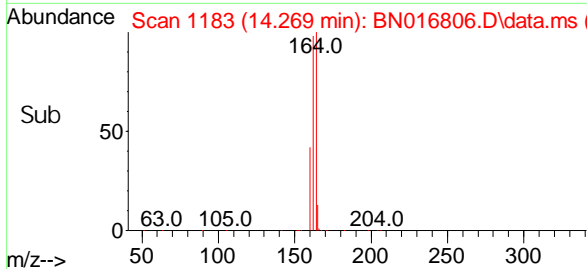
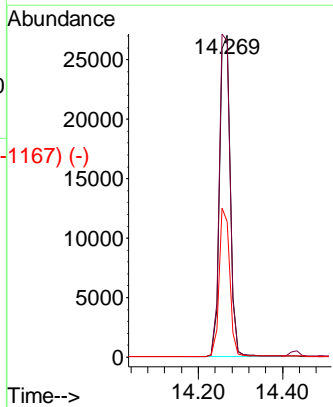
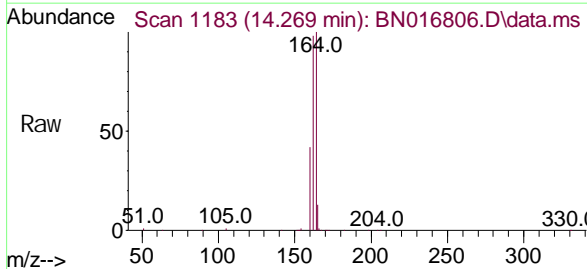


Abundance Scan 1183 (14.268 min): BN016710.D\data.ms (-1175) (-)

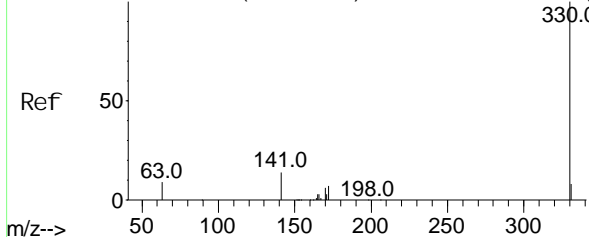
Acenaphthene-d10
Concen: 0.400 ng
RT: 14.269 min Scan# 1183
Delta R. T. 0.000 min
Lab File: BN016806.D
Acq: 07 Oct 2021 08:31



Tgt Ion: 164 Resp: 48000
Ion Ratio Lower Upper
164 100
162 98.1 82.6 124.0
160 42.0 38.2 57.2



Abundance Scan 1302 (15.778 min): BN016710.D\data.ms (-1297) (-)

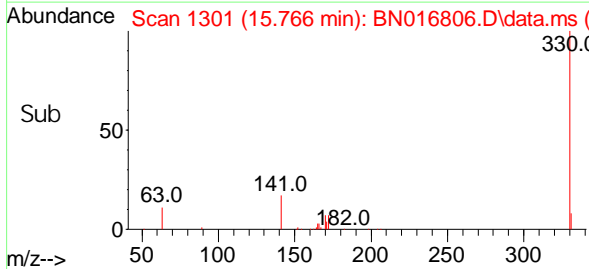
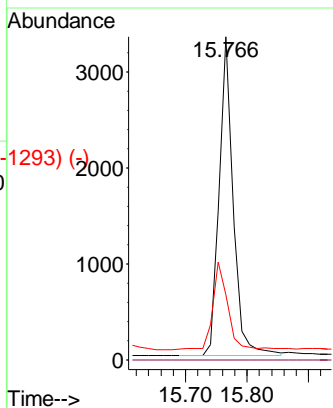
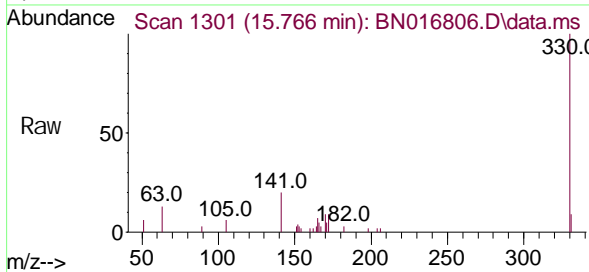


2, 4, 6-Tri bromophenol
Concen: 0.305 ng
RT: 15.766 min Scan# 1301
Delta R. T. 0.000 min
Lab File: BN016806.D
Acq: 07 Oct 2021 08:31

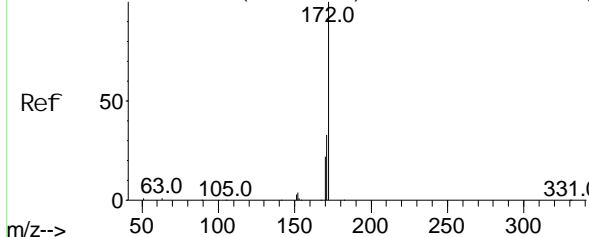
Instrument :
BNA_N
ClientSampled :
S-819-N-SO-2-2.5-093021

Tgt Ion: 330 Resp: 5194

Ion	Ratio	Lower	Upper
330	100		
332	0.0	0.0	0.0
141	28.6	24.2	36.2



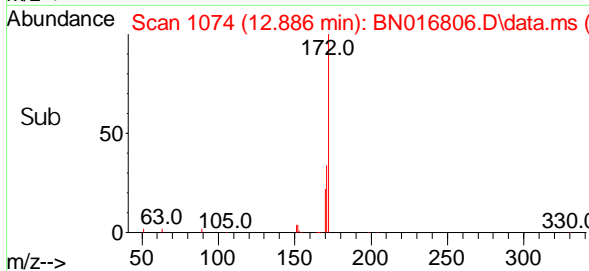
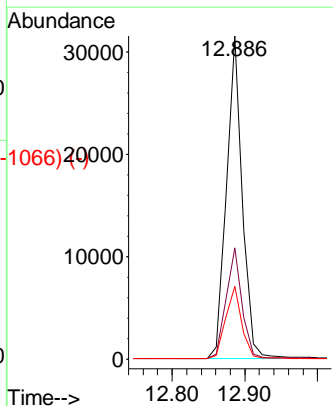
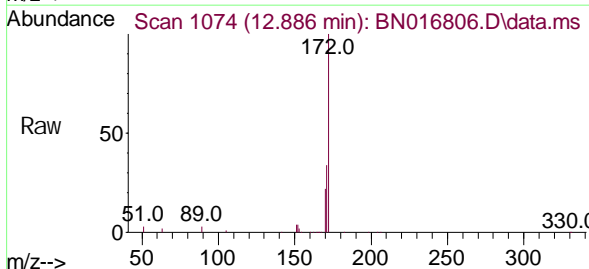
Abundance Scan 1075 (12.898 min): BN016710.D\data.ms (-1075) (-)



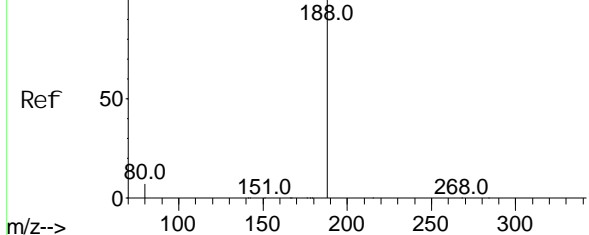
2-Fluorophenyl
Concen: 0.246 ng
RT: 12.886 min Scan# 1074
Delta R. T. 0.000 min
Lab File: BN016806.D
Acq: 07 Oct 2021 08:31

Tgt Ion: 172 Resp: 47221

Ion	Ratio	Lower	Upper
172	100		
171	34.5	26.9	40.3
170	22.5	17.4	26.0



Abundance Scan 1404 (17.029 min): BN016710.D\data.ms (-1387) (-)



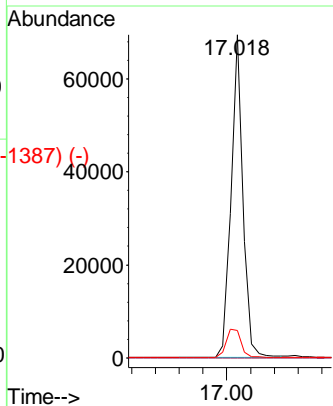
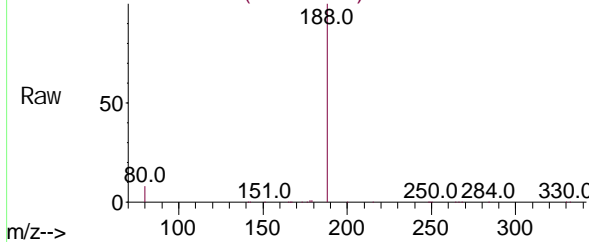
Phenanthrene-d10
Concen: 0.400 ng
RT: 17.018 min Scan# 1403
Delta R.T. 0.000 min
Lab File: BN016806.D
Acq: 07 Oct 2021 08:31

Instrument :
BNA_N
ClientSampled :
S-819-N-SO-2-2.5-093021

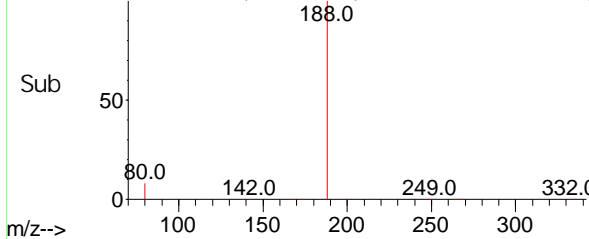
Tgt Ion: 188 Resp: 97016

Ion	Ratio	Lower	Upper
188	100		
94	0.0	0.0	0.0
80	8.5	5.8	8.8

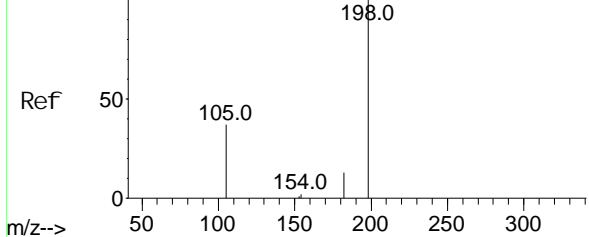
Abundance Scan 1403 (17.018 min): BN016806.D\data.ms



Abundance Scan 1403 (17.018 min): BN016806.D\data.ms (-1387) (-)



Abundance Scan 1274 (15.423 min): BN016710.D\data.ms (-1268) (-)

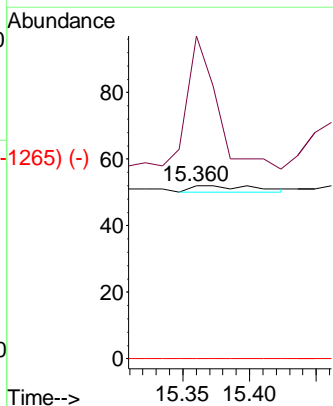
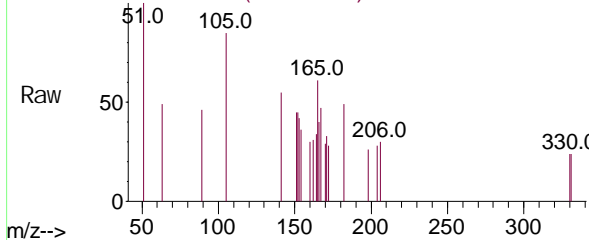


4,6-Dinitro-2-methyl phenol
Concen: 0.267 ng
RT: 15.360 min Scan# 1269
Delta R.T. -0.051 min
Lab File: BN016806.D
Acq: 07 Oct 2021 08:31

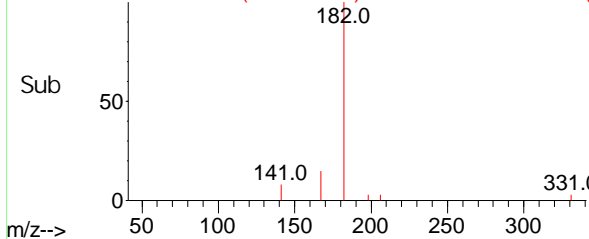
Tgt Ion: 198 Resp: 7

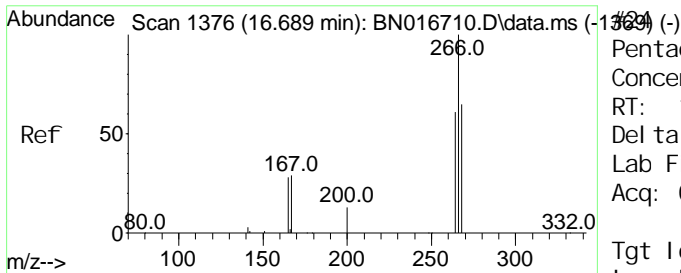
Ion	Ratio	Lower	Upper
198	100		
182	186.5	26.2	39.2#
77	0.0	0.0	0.0

Abundance Scan 1269 (15.360 min): BN016806.D\data.ms



Abundance Scan 1269 (15.360 min): BN016806.D\data.ms (-1265) (-)



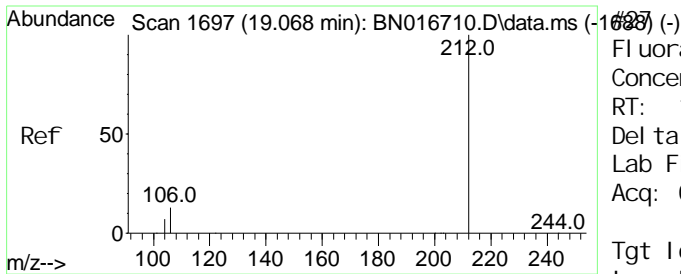
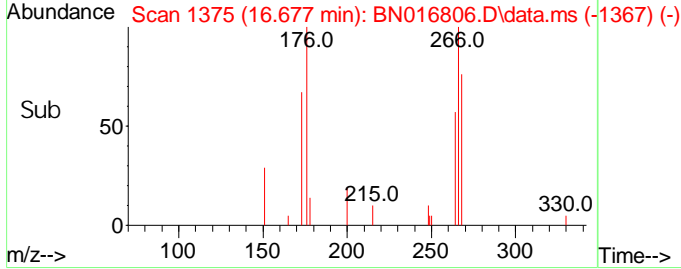
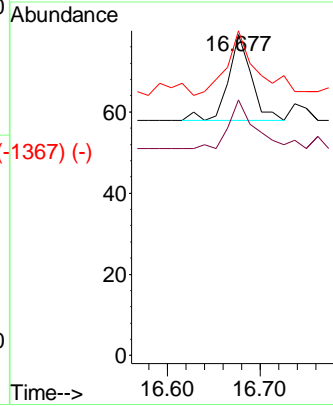
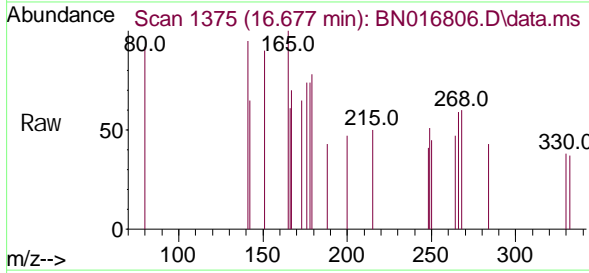


#1375 (-)
 Pentachlorophenol
 Concen: 0.340 ng
 RT: 16.677 min Scan# 1375
 Delta R.T. 0.000 min
 Lab File: BN016806.D
 Acq: 07 Oct 2021 08:31

Instrument :
 BNA_N
ClientSampled :
 S-819-N-SO-2-2.5-093021

Tgt Ion: 266 Resp: 36

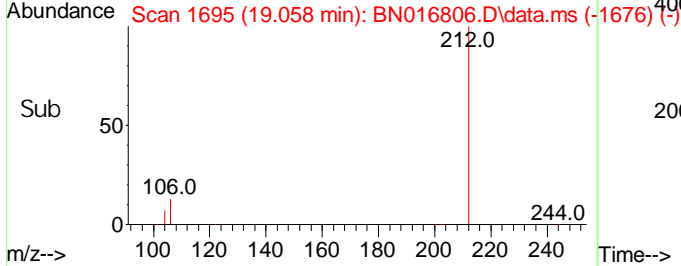
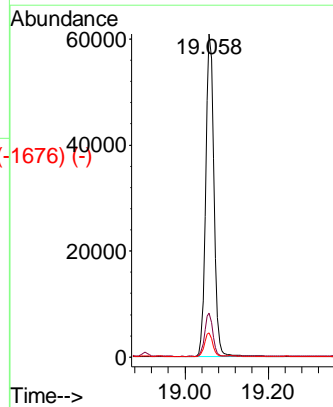
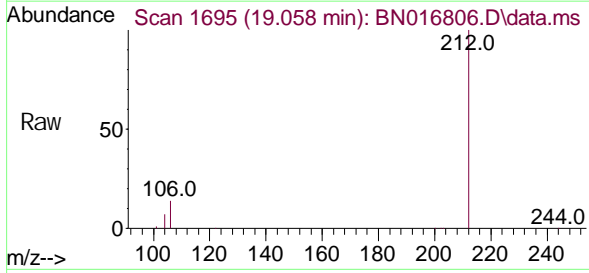
Ion	Ratio	Lower	Upper
266	100		
264	63.9	49.3	73.9
268	102.8	51.8	77.8#



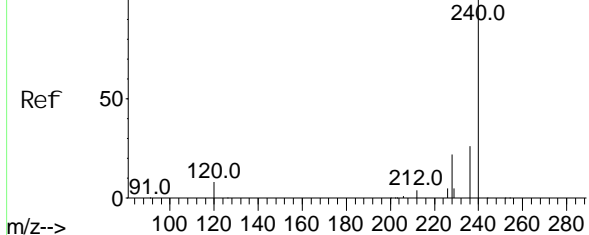
#1695 (-)
 Fluoranthene-d10
 Concen: 0.312 ng
 RT: 19.058 min Scan# 1695
 Delta R.T. -0.005 min
 Lab File: BN016806.D
 Acq: 07 Oct 2021 08:31

Tgt Ion: 212 Resp: 82864

Ion	Ratio	Lower	Upper
212	100		
106	13.2	10.6	16.0
104	7.2	5.8	8.8

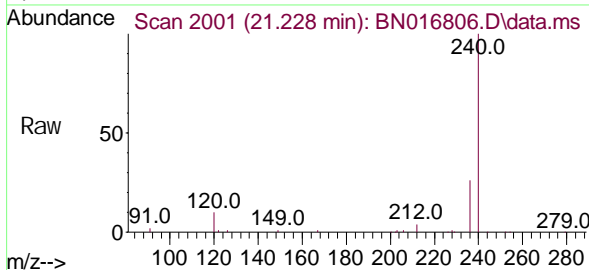


Abundance Scan 2002 (21.238 min): BN016710.D\data.ms (-1925) (-)



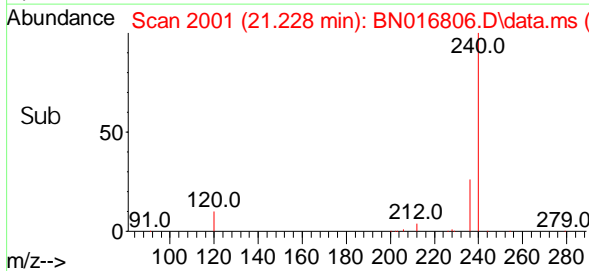
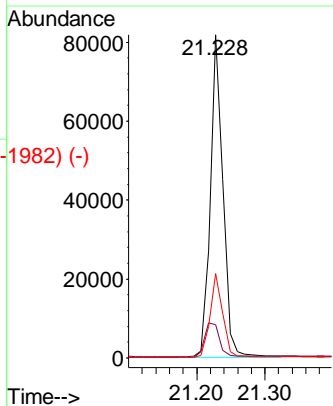
Chrysene-d12
Concen: 0.400 ng
RT: 21.228 min Scan# 2001
Delta R.T. 0.000 min
Lab File: BN016806.D
Acq: 07 Oct 2021 08:31

Instrument :
BNA_N
ClientSampled :
S-819-N-SO-2-2.5-093021

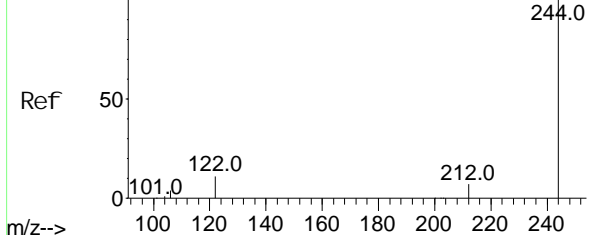


Tgt Ion: 240 Resp: 105635

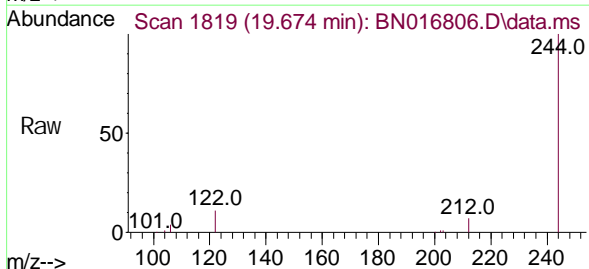
Ion	Ratio	Lower	Upper
240	100		
120	10.2	6.6	10.0#
236	26.0	20.7	31.1



Abundance Scan 1821 (19.683 min): BN016710.D\data.ms (-1831) (-)

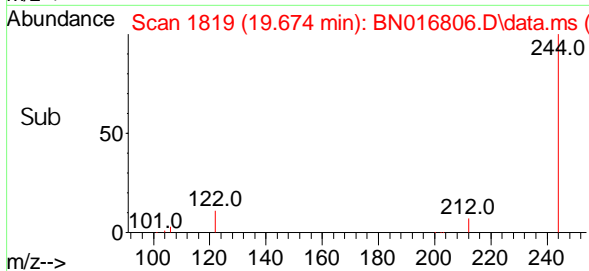
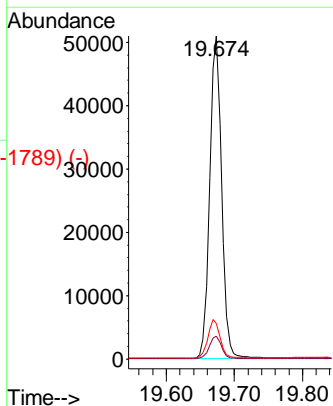


Terphenyl-d14
Concen: 0.263 ng
RT: 19.674 min Scan# 1819
Delta R.T. 0.000 min
Lab File: BN016806.D
Acq: 07 Oct 2021 08:31

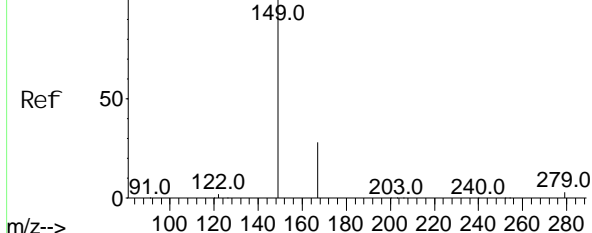


Tgt Ion: 244 Resp: 62088

Ion	Ratio	Lower	Upper
244	100		
212	7.0	5.8	8.6
122	11.1	8.9	13.3

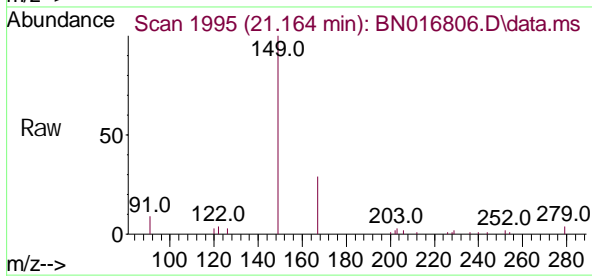


Abundance Scan 1996 (21.174 min): BN016710.D\data.ms (-1996) (-)



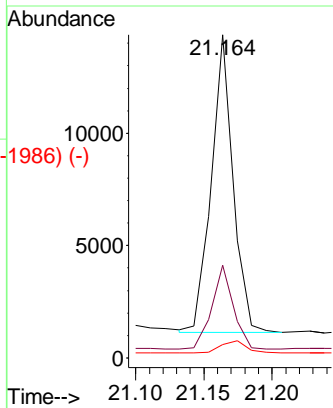
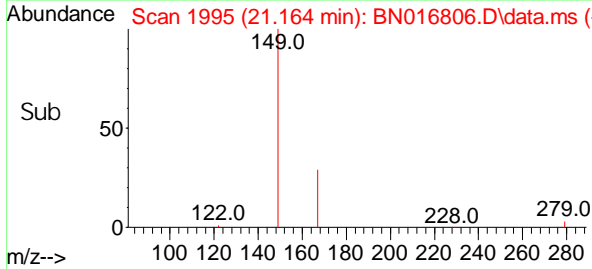
Bi s(2-ethyl hexyl)phthal ate
Concen: 0.074 ng
RT: 21.164 mi n Scan# 1995
Del ta R. T. 0.000 mi n
Lab Fi le: BN016806. D
Acq: 07 Oct 2021 08: 31

Instrument :
BNA_N
ClientSampled :
S-819-N-SO-2-2.5-093021



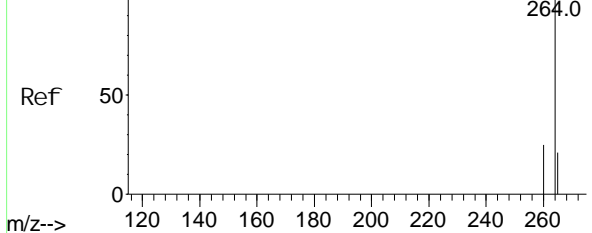
Tgt Ion: 149 Resp: 14766

Ion	Ratio	Lower	Upper
149	100		
167	27.6	22.2	33.4
279	4.7	3.4	5.2

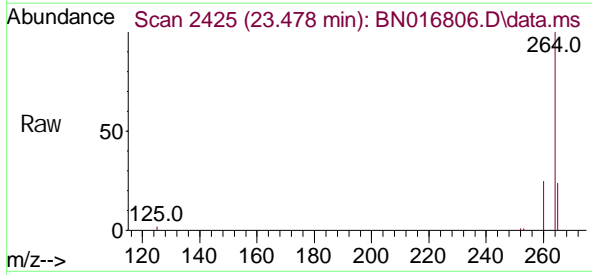


Sub

Abundance Scan 2430 (23.494 min): BN016710.D\data.ms (-2430) (-)

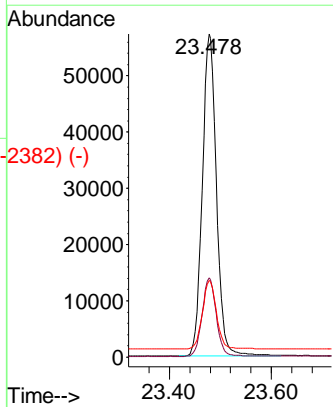
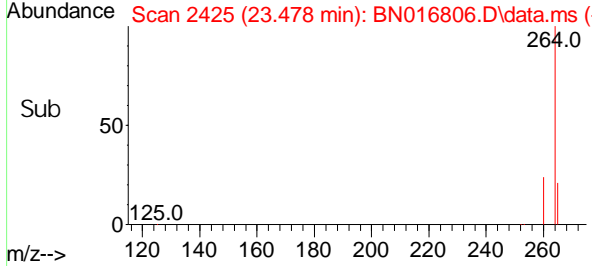


Peryl ene-d12
Concen: 0.400 ng
RT: 23.478 mi n Scan# 2425
Del ta R. T. -0.003 mi n
Lab Fi le: BN016806. D
Acq: 07 Oct 2021 08: 31



Tgt Ion: 264 Resp: 110262

Ion	Ratio	Lower	Upper
264	100		
260	24.6	19.8	29.6
265	23.8	20.3	30.5



Sub

Abundance Scan 2425 (23.478 min): BN016806.D\data.ms (-2382) (-)

