

Data Path : Z:\svoasrv\HPCHEM1\BNA_N\Data\BN100621\
 Data File : BN016792.D
 Acq On : 06 Oct 2021 22:54
 Operator : CG/JU
 Sample : M3915-13
 Misc :
 ALS Vial : 17 Sample Multiplier: 1

Instrument :
 BNA_N
 ClientSampleId :
 MW178I-20210921

Manual Integrations
 APPROVED

mohammad
 10/7/2021 8:51:40 AM

Quant Time: Oct 07 00:59:43 2021
 Quant Method : Z:\SVOASRV\HPCHEM1\BNA_N\METHODS\8270-SIM-BN100421.M
 Quant Title : ASP BNA STANDARDS FOR 5 POINT CALIBRATION
 QLast Update : Wed Oct 06 14:22:07 2021
 Response via : Initial Calibration

Compound	R.T.	QIon	Response	Conc	Units	Dev(Min)	
Internal Standards							
1) 1,4-Dichlorobenzene-d4	7.633	152	19809	0.400	ng	0.00	
7) Naphthalene-d8	10.407	136	92377	0.400	ng	# 0.00	
13) Acenaphthene-d10	14.269	164	50853	0.400	ng	0.00	
19) Phenanthrene-d10	17.018	188	102062	0.400	ng	0.00	
29) Chrysene-d12	21.228	240	104734	0.400	ng	0.00	
35) Perylene-d12	23.474	264	109712	0.400	ng	0.00	
System Monitoring Compounds							
4) 2-Fluorophenol	5.264	112	6629	0.131	ng	0.02	
5) Phenol-d6	6.822	99	4278	0.076	ng	0.00	
8) Nitrobenzene-d5	8.772	82	17433	0.269	ng	0.00	
11) 2-Methylnaphthalene-d10	11.999	152	44324	0.322	ng	0.00	
14) 2,4,6-Tribromophenol	15.766	330	8654	0.412	ng	0.00	
15) 2-Fluorobiphenyl	12.886	172	58086	0.286	ng	0.00	
27) Fluoranthene-d10	19.058	212	121455	0.435	ng	0.00	
31) Terphenyl-d14	19.674	244	98427	0.420	ng	0.00	
Target Compounds							
2) 1,4-Dioxane	3.254	88	1304m	0.141	ng		Qvalue
34) Bis(2-ethylhexyl)phtha...	21.164	149	22484	0.114	ng		99

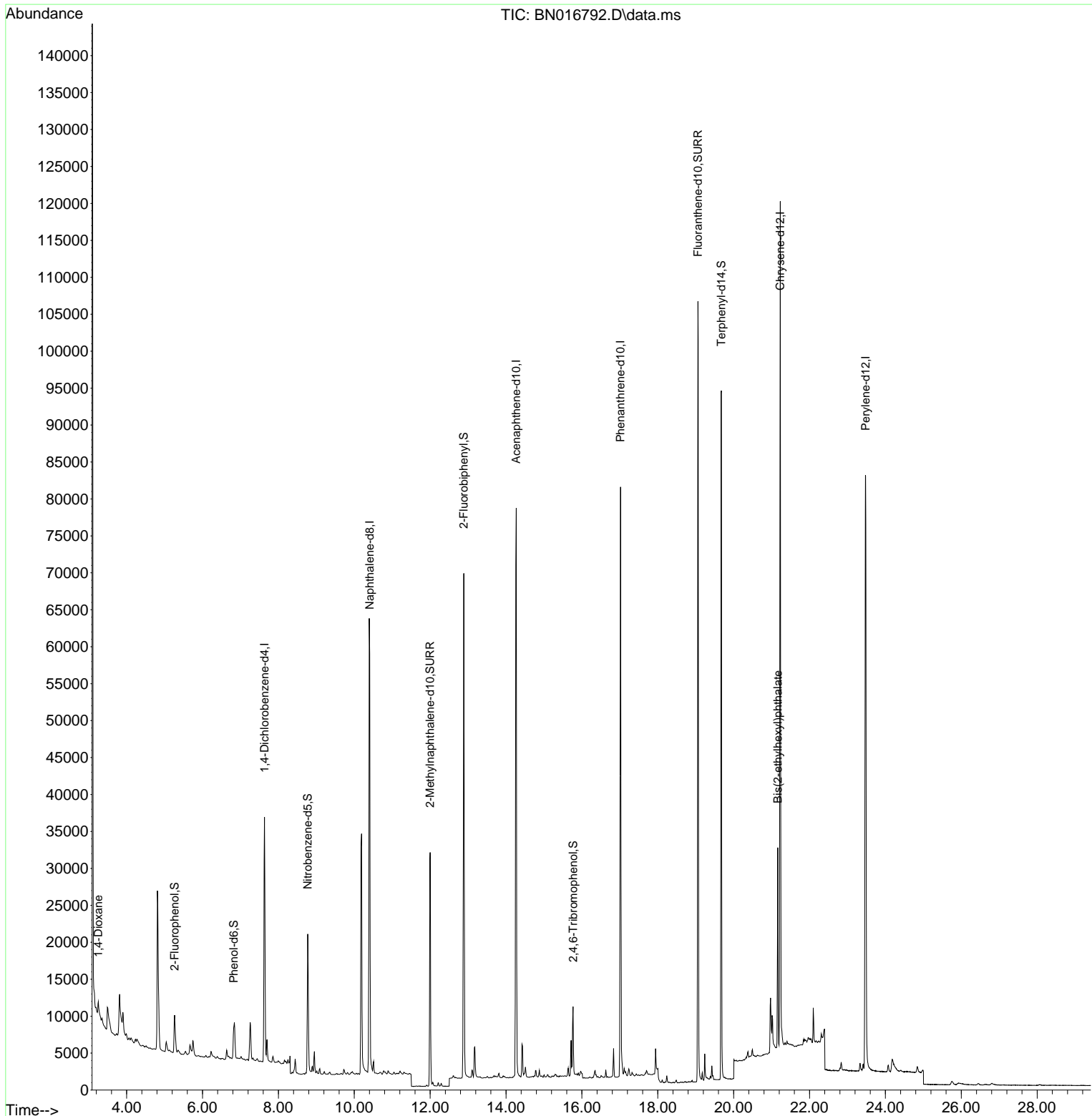
(#) = qualifier out of range (m) = manual integration (+) = signals summed

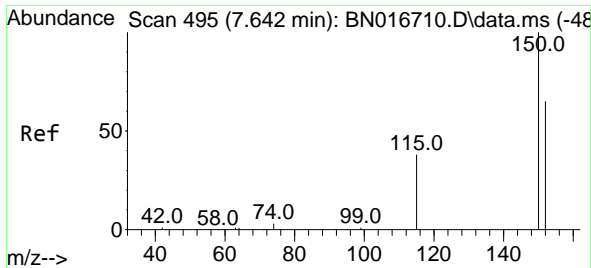
Data Path : Z:\svoasrv\HPCHEM1\BNA_N\Data\BN100621\
 Data File : BN016792.D
 Acq On : 06 Oct 2021 22:54
 Operator : CG/JU
 Sample : M3915-13
 Misc :
 ALS Vial : 17 Sample Multiplier: 1

Instrument :
 BNA_N
 ClientSampleId :
 MW178I-20210921

Manual Integrations
 APPROVED
 mohammad
 10/7/2021 8:51:40 AM

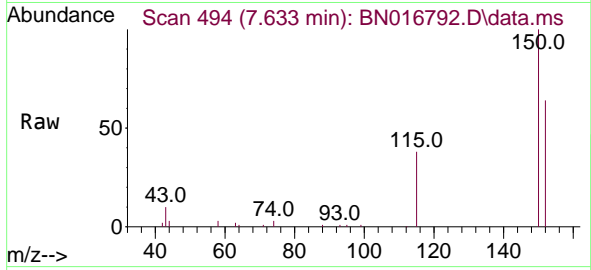
Quant Time: Oct 07 00:59:43 2021
 Quant Method : Z:\SVOASRV\HPCHEM1\BNA_N\METHODS\8270-SIM-BN100421.M
 Quant Title : ASP BNA STANDARDS FOR 5 POINT CALIBRATION
 QLast Update : Wed Oct 06 14:22:07 2021
 Response via : Initial Calibration





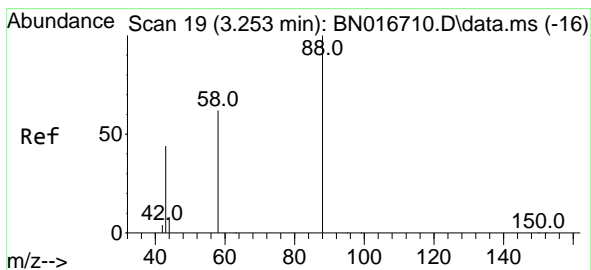
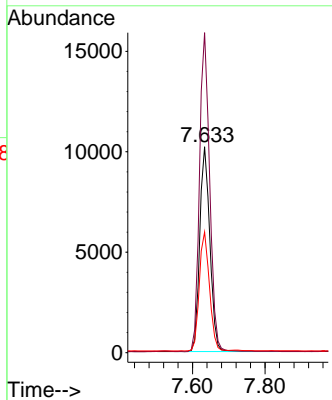
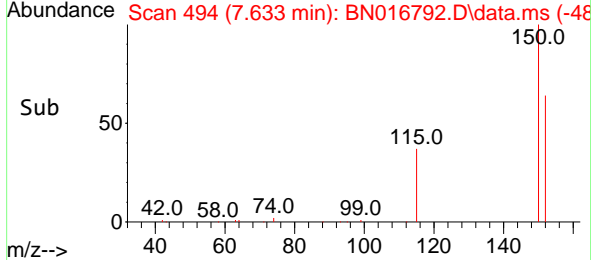
#1
 1,4-Dichlorobenzene-d4
 Concen: 0.400 ng
 RT: 7.633 min Scan# 494
 Delta R.T. 0.000 min
 Lab File: BN016792.D
 Acq: 06 Oct 2021 22:54

Instrument :
 BNA_N
ClientSampled :
 MW178I-20210921

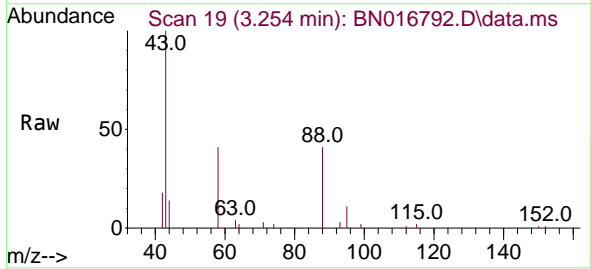


Tgt Ion:152 Resp: 19809
 Ion Ratio Lower Upper
 152 100
 150 155.4 123.3 184.9
 115 58.6 47.0 70.6

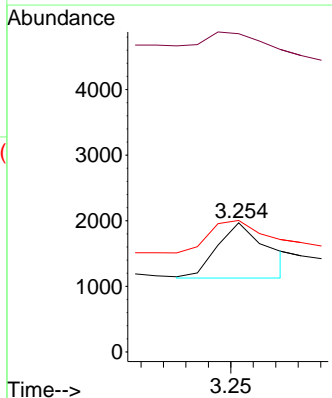
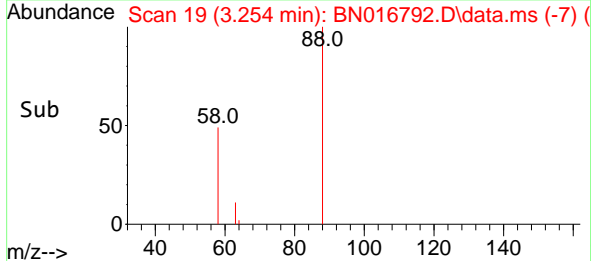
Manual Integrations
APPROVED
 mohammad
 10/7/2021 8:51:40 AM

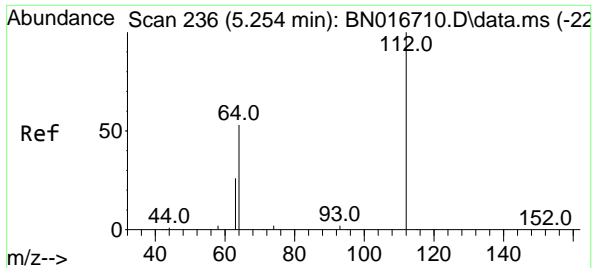


#2
 1,4-Dioxane
 Concen: 0.141 ng m
 RT: 3.254 min Scan# 19
 Delta R.T. 0.010 min
 Lab File: BN016792.D
 Acq: 06 Oct 2021 22:54



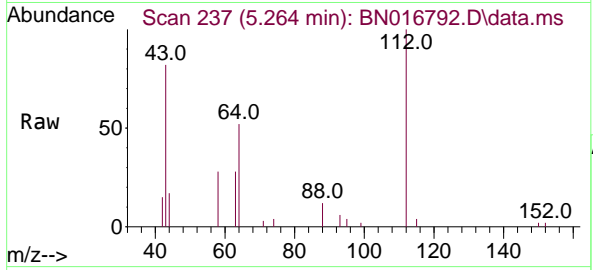
Tgt Ion: 88 Resp: 1304
 Ion Ratio Lower Upper
 88 100
 43 20.9 61.7 92.5#
 58 56.2 62.2 93.2#





#4
 2-Fluorophenol
 Concen: 0.131 ng
 RT: 5.264 min Scan# 237
 Delta R.T. 0.019 min
 Lab File: BN016792.D
 Acq: 06 Oct 2021 22:54

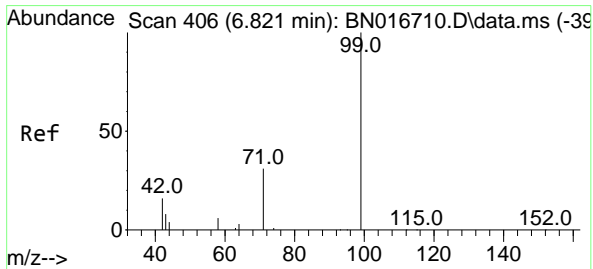
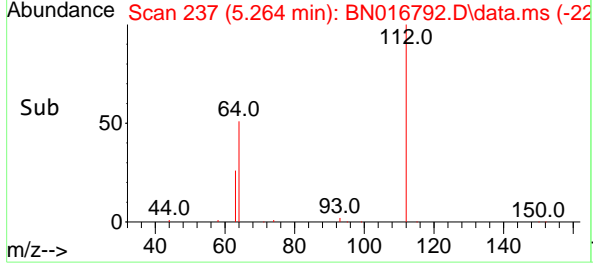
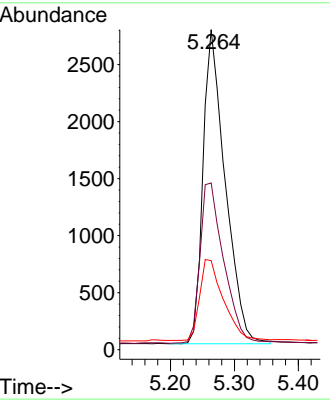
Instrument :
 BNA_N
ClientSampled :
 MW178I-20210921



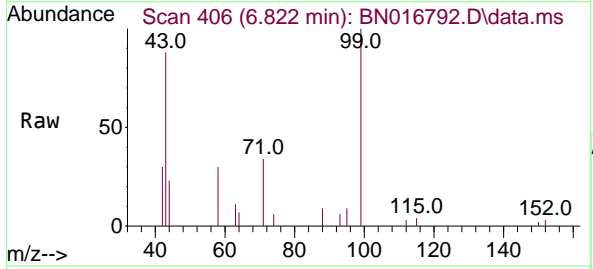
Tgt Ion: 112 Resp: 6629

Ion	Ratio	Lower	Upper
112	100		
64	54.5	42.9	64.3
63	27.5	21.5	32.3

Manual Integrations
APPROVED
 mohammad
 10/7/2021 8:51:40 AM

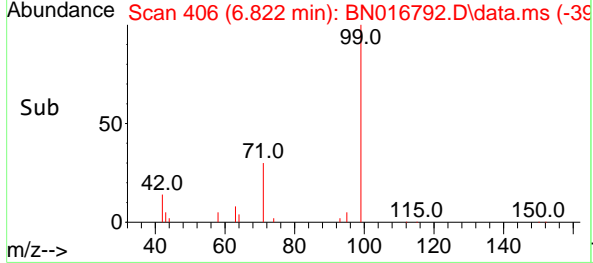
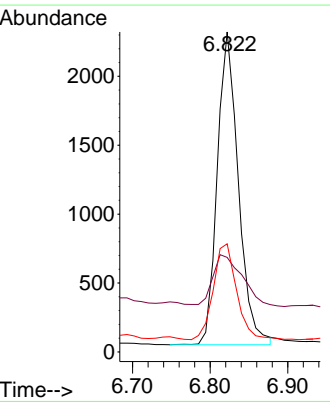


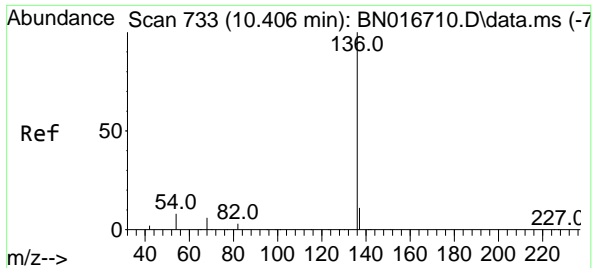
#5
 Phenol-d6
 Concen: 0.076 ng
 RT: 6.822 min Scan# 406
 Delta R.T. 0.010 min
 Lab File: BN016792.D
 Acq: 06 Oct 2021 22:54



Tgt Ion: 99 Resp: 4278

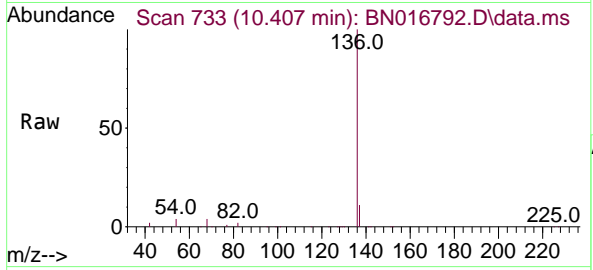
Ion	Ratio	Lower	Upper
99	100		
42	21.5	13.4	20.2#
71	33.9	24.0	36.0





#7
 Naphthalene-d8
 Concen: 0.400 ng
 RT: 10.407 min Scan# 733
 Delta R.T. 0.000 min
 Lab File: BN016792.D
 Acq: 06 Oct 2021 22:54

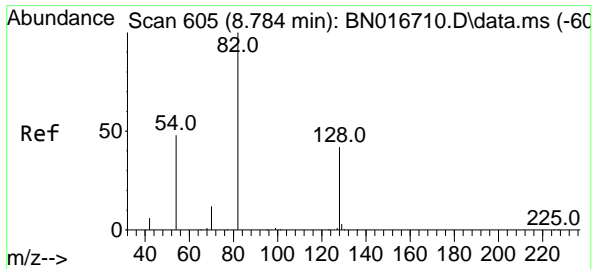
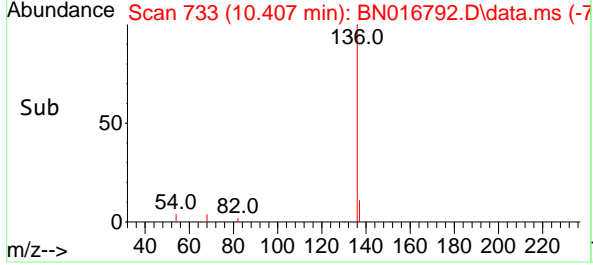
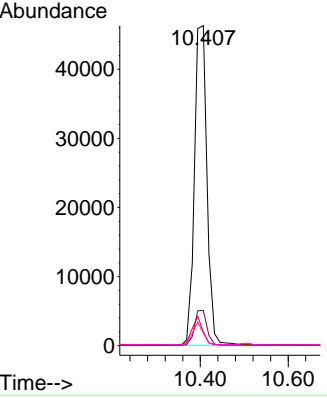
Instrument :
 BNA_N
ClientSampled :
 MW178I-20210921



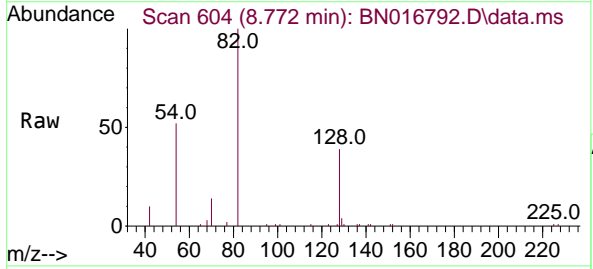
Tgt Ion: 136 Resp: 92377

Ion	Ratio	Lower	Upper
136	100		
137	11.1	8.9	13.3
54	4.4	6.5	9.7#
68	3.9	5.3	7.9#

Manual Integrations
APPROVED
 mohammad
 10/7/2021 8:51:40 AM

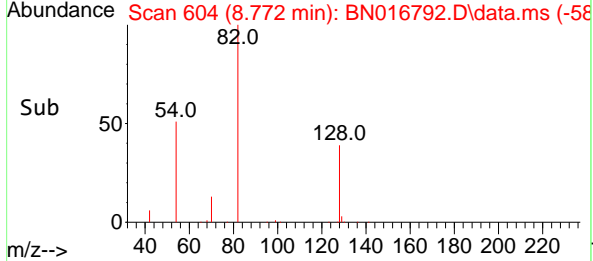
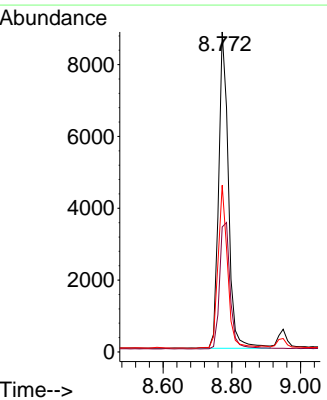


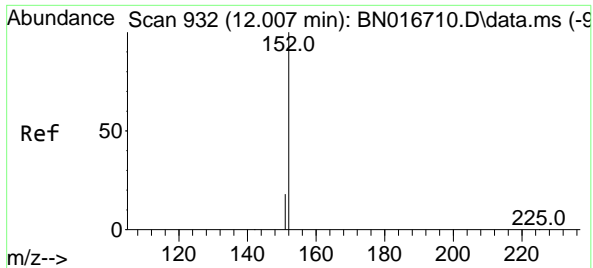
#8
 Nitrobenzene-d5
 Concen: 0.269 ng
 RT: 8.772 min Scan# 604
 Delta R.T. 0.000 min
 Lab File: BN016792.D
 Acq: 06 Oct 2021 22:54



Tgt Ion: 82 Resp: 17433

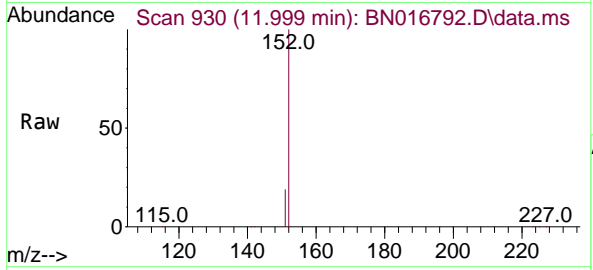
Ion	Ratio	Lower	Upper
82	100		
128	39.0	33.8	50.6
54	52.1	38.5	57.7





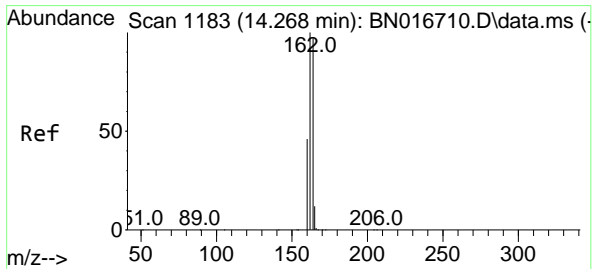
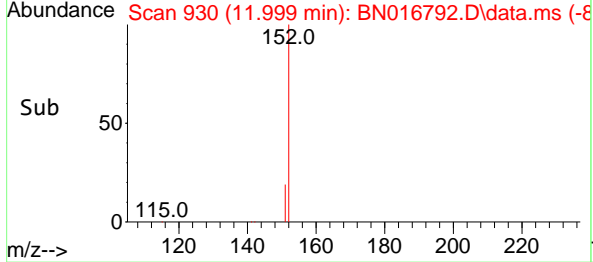
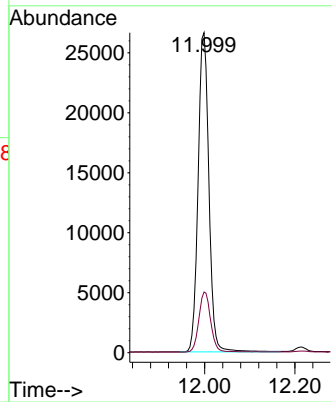
#11
 2-Methylnaphthalene-d10
 Concen: 0.322 ng
 RT: 11.999 min Scan# 930
 Delta R.T. 0.000 min
 Lab File: BN016792.D
 Acq: 06 Oct 2021 22:54

Instrument :
 BNA_N
ClientSampled :
 MW178I-20210921

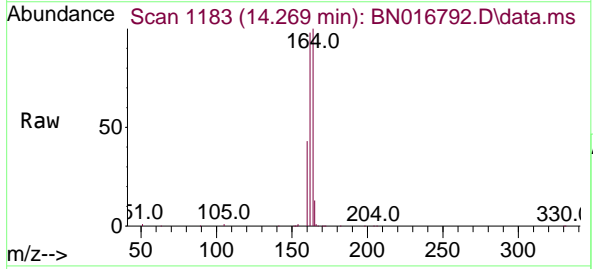


Tgt Ion:152 Resp: 44324
 Ion Ratio Lower Upper
 152 100
 151 20.5 16.2 24.4

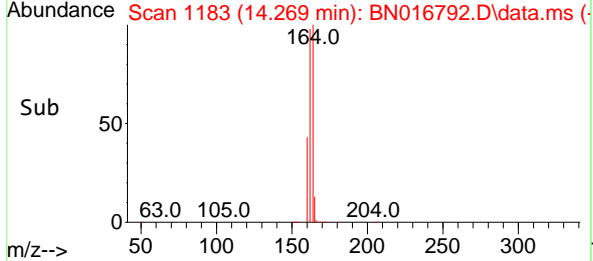
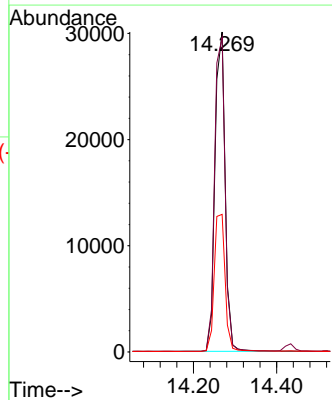
Manual Integrations
APPROVED
 mohammad
 10/7/2021 8:51:40 AM

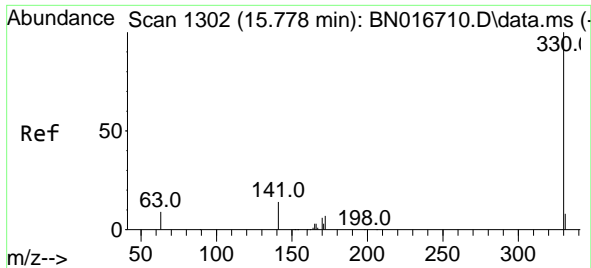


#13
 Acenaphthene-d10
 Concen: 0.400 ng
 RT: 14.269 min Scan# 1183
 Delta R.T. 0.000 min
 Lab File: BN016792.D
 Acq: 06 Oct 2021 22:54



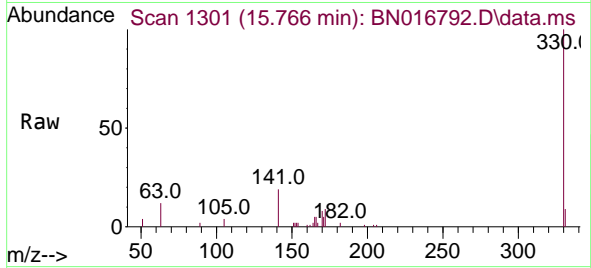
Tgt Ion:164 Resp: 50853
 Ion Ratio Lower Upper
 164 100
 162 98.2 82.6 124.0
 160 43.0 38.2 57.2





#14
 2,4,6-Tribromophenol
 Concen: 0.412 ng
 RT: 15.766 min Scan# 1301
 Delta R.T. 0.000 min
 Lab File: BN016792.D
 Acq: 06 Oct 2021 22:54

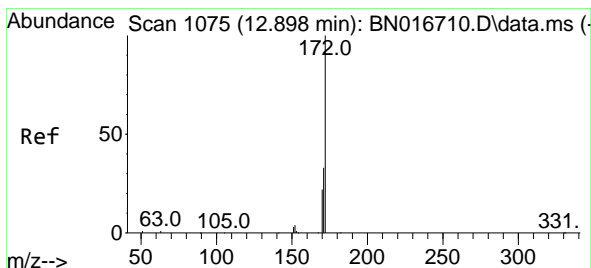
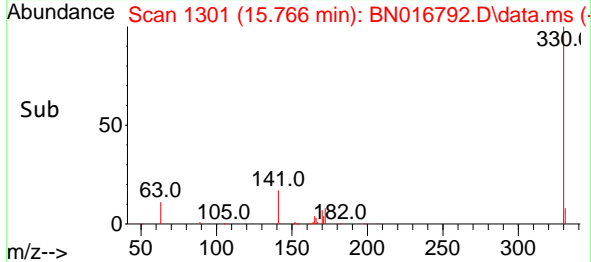
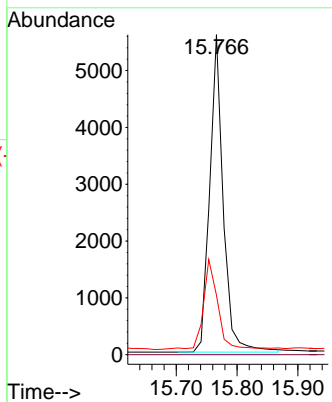
Instrument :
 BNA_N
 ClientSampled :
 MW178I-20210921



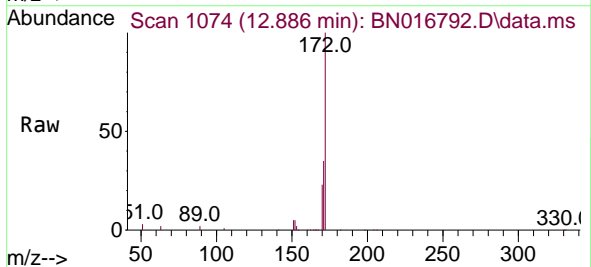
Tgt Ion:330 Resp: 8654
 Ion Ratio Lower Upper
 330 100
 332 0.0 0.0 0.0
 141 28.6 24.2 36.2

Manual Integrations
 APPROVED

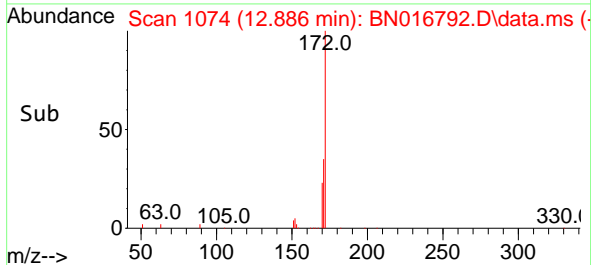
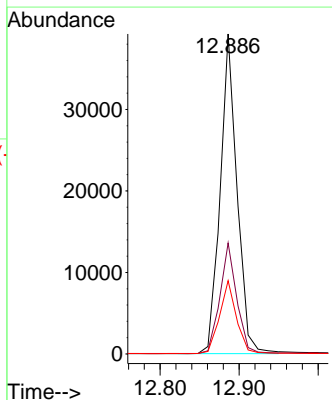
mohammad
 10/7/2021 8:51:40 AM

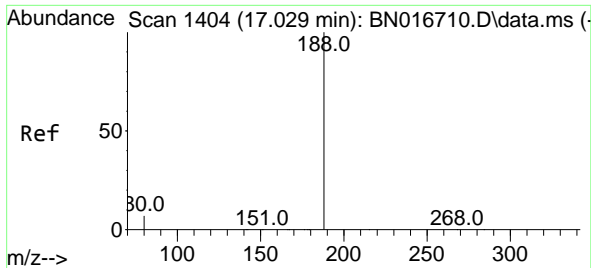


#15
 2-Fluorobiphenyl
 Concen: 0.286 ng
 RT: 12.886 min Scan# 1074
 Delta R.T. 0.000 min
 Lab File: BN016792.D
 Acq: 06 Oct 2021 22:54



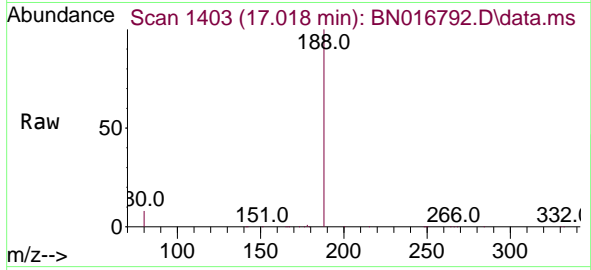
Tgt Ion:172 Resp: 58086
 Ion Ratio Lower Upper
 172 100
 171 34.7 26.9 40.3
 170 22.9 17.4 26.0





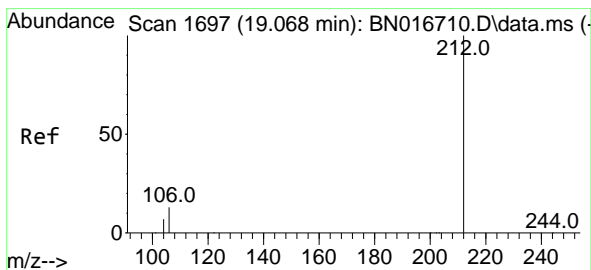
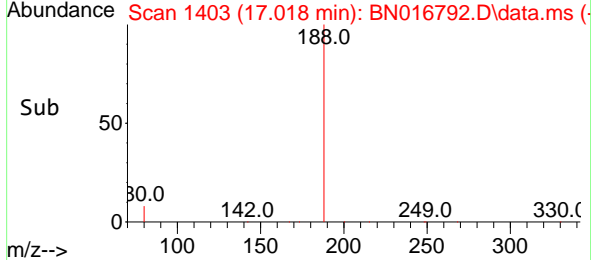
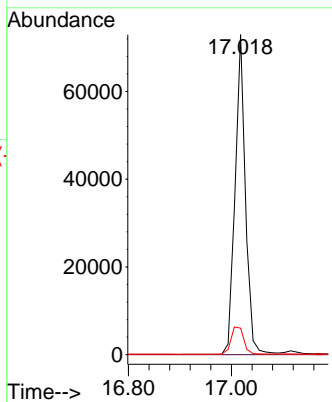
#19
 Phenanthrene-d10
 Concen: 0.400 ng
 RT: 17.018 min Scan# 1403
 Delta R.T. 0.000 min
 Lab File: BN016792.D
 Acq: 06 Oct 2021 22:54

Instrument :
 BNA_N
ClientSampleId :
 MW178I-20210921

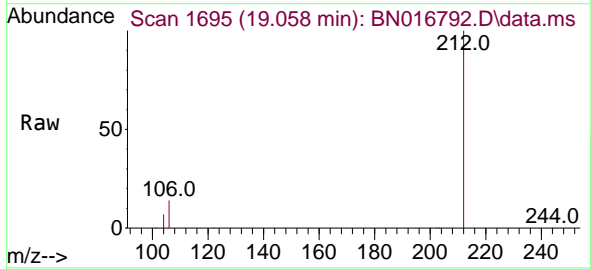


Tgt Ion:188 Resp: 102062
 Ion Ratio Lower Upper
 188 100
 94 0.0 0.0 0.0
 80 8.3 5.8 8.8

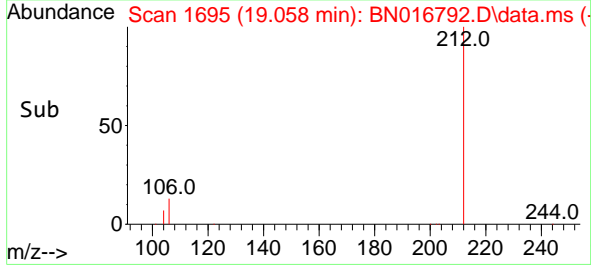
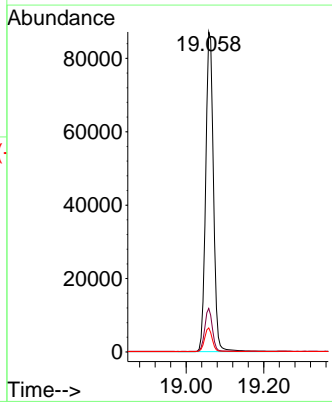
Manual Integrations
APPROVED
 mohammad
 10/7/2021 8:51:40 AM

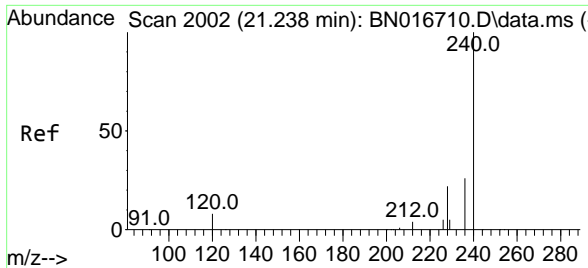


#27
 Fluoranthene-d10
 Concen: 0.435 ng
 RT: 19.058 min Scan# 1695
 Delta R.T. -0.005 min
 Lab File: BN016792.D
 Acq: 06 Oct 2021 22:54



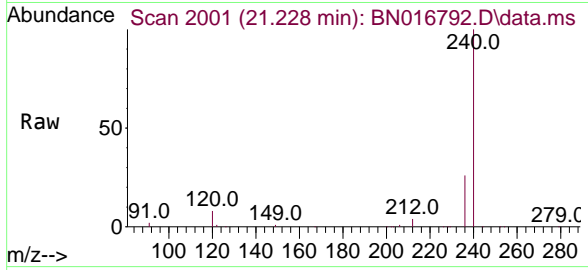
Tgt Ion:212 Resp: 121455
 Ion Ratio Lower Upper
 212 100
 106 13.4 10.6 16.0
 104 7.3 5.8 8.8





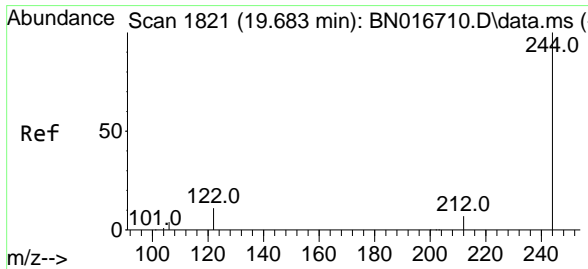
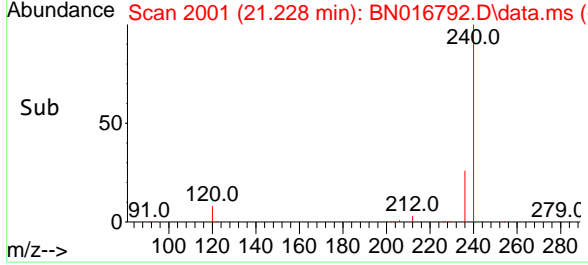
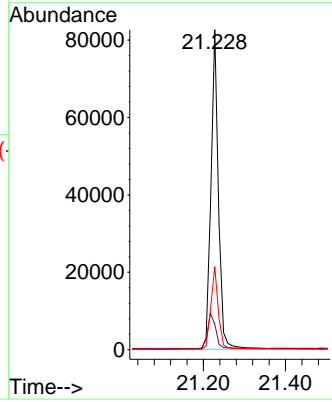
#29
 Chrysene-d12
 Concen: 0.400 ng
 RT: 21.228 min Scan# 2001
 Delta R.T. 0.000 min
 Lab File: BN016792.D
 Acq: 06 Oct 2021 22:54

Instrument :
 BNA_N
ClientSampled :
 MW178I-20210921

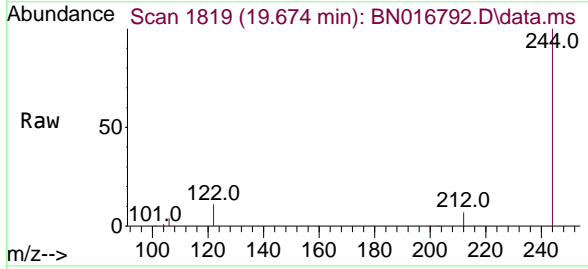


Tgt Ion:240 Resp: 104734
 Ion Ratio Lower Upper
 240 100
 120 8.0 6.6 10.0
 236 26.0 20.7 31.1

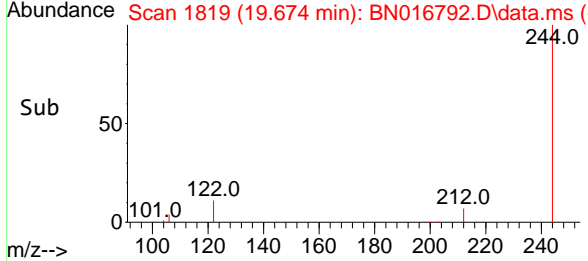
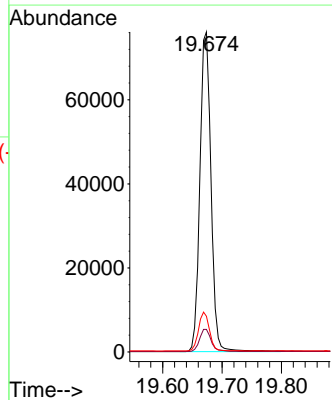
Manual Integrations
APPROVED
 mohammad
 10/7/2021 8:51:40 AM

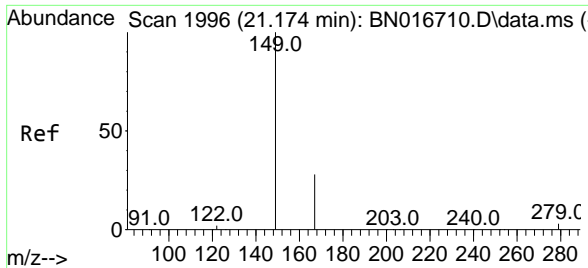


#31
 Terphenyl-d14
 Concen: 0.420 ng
 RT: 19.674 min Scan# 1819
 Delta R.T. 0.000 min
 Lab File: BN016792.D
 Acq: 06 Oct 2021 22:54



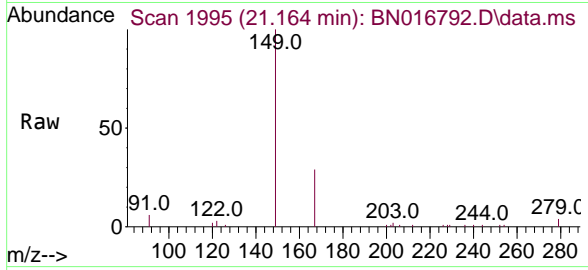
Tgt Ion:244 Resp: 98427
 Ion Ratio Lower Upper
 244 100
 212 7.0 5.8 8.6
 122 11.1 8.9 13.3





#34
 Bis(2-ethylhexyl)phthalate
 Concen: 0.114 ng
 RT: 21.164 min Scan# 1995
 Delta R.T. 0.000 min
 Lab File: BN016792.D
 Acq: 06 Oct 2021 22:54

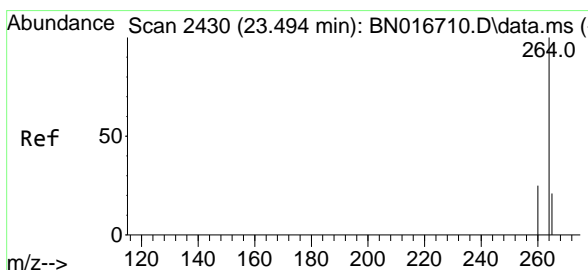
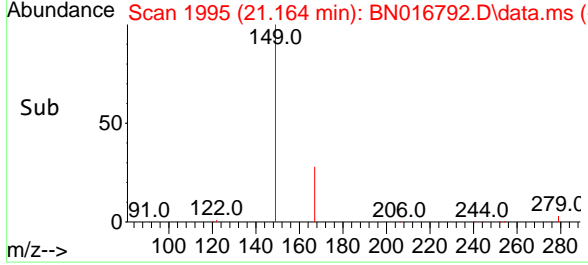
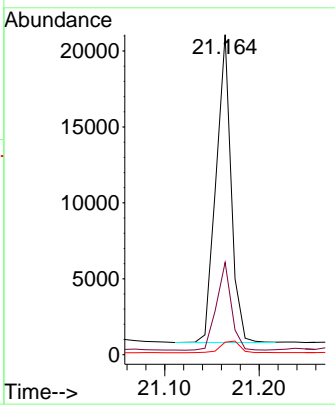
Instrument :
 BNA_N
ClientSampled :
 MW178I-20210921



Tgt Ion:149 Resp: 22484

Ion	Ratio	Lower	Upper
149	100		
167	28.2	22.2	33.4
279	4.9	3.4	5.2

Manual Integrations
APPROVED
 mohammad
 10/7/2021 8:51:40 AM



#35
 Perylene-d12
 Concen: 0.400 ng
 RT: 23.474 min Scan# 2424
 Delta R.T. -0.007 min
 Lab File: BN016792.D
 Acq: 06 Oct 2021 22:54

Tgt Ion:264 Resp: 109712

Ion	Ratio	Lower	Upper
264	100		
260	24.4	19.8	29.6
265	23.0	20.3	30.5

